



Atlantic Richfield Company
(a BP affiliated company)

6 Centerpointe Drive, Room 172
La Palma, CA 90623-1066
Phone: (714) 670-5303
Fax: (714) 670-5195

April 15, 2005

**Re: First Quarter 2005 Groundwater Monitoring Report
Former BP Service Station #11132
3201 35th Avenue
Oakland, California
Regulatory ID No.: RO0000014**

I declare that, to the best of my knowledge at the present time, the information and/or recommendations contained in the attached document are true and correct.


Submitted by:

Kyle Christie
Environmental Business Manager



April 15, 2005

Mr. Robert Schultz
Alameda County Environmental Health
1131 Harbor Bay Parkway, Suite 250
Alameda, CA 94502-6577

**Re: First Quarter 2005 Groundwater Monitoring Report
Former BP Service Station #11132
3201 35th Avenue
Oakland, California
Regulatory ID No.: RO0000014**

Dear Mr. Schultz:

On behalf of the Atlantic Richfield Company (RM), a BP affiliated company, URS Corporation (URS) is submitting the *First Quarter 2005 Groundwater Monitoring Report* for the Former BP Service Station #11132, located at 3201 35th Avenue, Oakland, California.

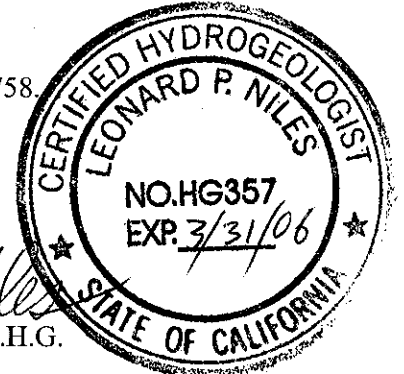
If you have any questions regarding this submission, please call me at (510) 874-1758.

Sincerely,

URS CORPORATION

Lynelle Onishi
Project Manager

Leonard P. Niles, R.G./C.H.G.
Senior Geologist



Enclosure: First Quarter 2005 Groundwater Monitoring Report

cc: Mr. Kyle Christie, Atlantic Richfield Company (RM), copy uploaded to ENFOS
Ms. Liz Sewell, ConocoPhillips, copy uploaded to URS FTP server
Ms. Betty Graham, San Francisco Bay Regional Water Quality Control Board (RWQCB), 1515 Clay Street, Suite 1400, Oakland, CA 94612, and electronic copy uploaded to RWQCB FTP server

R E P O R T

**FIRST QUARTER 2005
GROUNDWATER MONITORING
REPORT**

FORMER BP SERVICE STATION #11132
3201 35TH AVENUE
OAKLAND, CALIFORNIA

Prepared for
RM

April 15, 2005

URS

URS Corporation
1333 Broadway, Suite 800
Oakland, California 94612

Date: April 15, 2005
Quarter: 1Q 05

RM QUARTERLY GROUNDWATER MONITORING REPORT

Facility No.: 11132 Address: 3201 35th Avenue Oakland, CA
RM Environmental Business Manager: Kyle Christie
Consulting Co./Contact Person: URS Corporation / Lynelle Onishi
Primary Agency: Alameda County Environmental Health (ACEH)
Regulatory ID No.: #RO0000014

WORK PERFORMED THIS QUARTER (First – 2005):

1. Performed first quarter 2005 groundwater monitoring event on February 15, 2005.
2. Prepared and submitted this first quarter 2005 groundwater monitoring report.
3. Performed monthly free product gauging and bailing as an interim remedial action measure.

WORK PROPOSED FOR NEXT QUARTER (Second – 2005):

1. Perform second quarter 2005 groundwater monitoring event.
2. Prepare and submit second quarter 2005 groundwater monitoring report.
3. Perform monthly free product gauging and bailing as an interim remedial action measure.
4. Install two on-site groundwater monitoring wells, pending agency approval.
5. Prepare and submit a subsurface investigation completion report, pending agency approval.

Current Phase of Project: GW monitoring/sampling/Free Product Bailing
Frequency of Groundwater Sampling: Quarterly: Wells MW-1, MW-2, MW-5, MW-8, MW-9, MW-10, & RW-1; Annually (1st quarter): Wells MW-3 MW-4. Not Sampled: Wells MW-6 and MW-7.
Frequency of Groundwater Monitoring: Quarterly
Is Free Product (FP) Present On-Site: Free Product detected in MW-1 and RW-1 on January 13, February 15, and March 7, 2005; Sheen in well MW-2, MW-9 on February 15, 2005 and in well MW-10 on January 13, 2005
FP Recovered this Quarter (as of 3/7/05): 0.09 Gallons
Cumulative FP Recovered Since 1990: 51.67 Gallons
Current Remediation Techniques: Interim Free Product Bailing
Approximate Depth to Groundwater (2/15/05): 12.50 (MW-6) to 18.91 (MW-4) feet
Groundwater Gradient (direction): Southeast
Groundwater Gradient (magnitude): 0.01 feet per foot

DISCUSSION:

Gasoline range organics (GRO) were detected at or above the laboratory reporting limit in six of the seven wells sampled this quarter at concentrations ranging from 500 micrograms per liter ($\mu\text{g/L}$) (MW-3) to 67,000 $\mu\text{g/L}$ (MW-2). Benzene was detected at or above the laboratory reporting limit in six wells sampled this quarter at concentrations ranging from 7.8 $\mu\text{g/L}$ (MW-3) to 11,000 $\mu\text{g/L}$ (MW-2). Ethylbenzene was detected at or above the laboratory reporting limit in six wells sampled this quarter at concentrations ranging from 9.2 $\mu\text{g/L}$ (MW-3) to 3,000 $\mu\text{g/L}$ (MW-2). Toluene was detected at or above the laboratory reporting limit in five wells sampled this quarter at concentrations ranging from 1.8 $\mu\text{g/L}$ (MW-3) to 4,200 $\mu\text{g/L}$ (MW-2). Xylenes were detected at or above the laboratory reporting limit in six wells sampled this quarter at concentrations ranging from 9.6 $\mu\text{g/L}$ (MW-3) to 11,000 $\mu\text{g/L}$ (MW-2). Methyl tert-butyl ether (MTBE) was detected at or above the laboratory reporting limit in five wells sampled this quarter at concentrations ranging from 1.7 $\mu\text{g/L}$ (MW-3) to 690 $\mu\text{g/L}$ (MW-2). No other constituents of concern were detected at or above the laboratory reporting limit in any of the seven wells sampled this quarter.

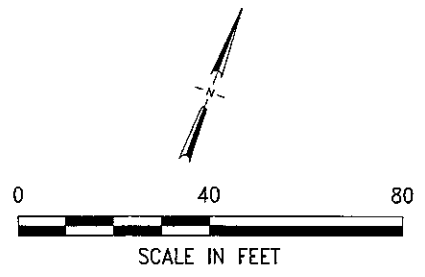
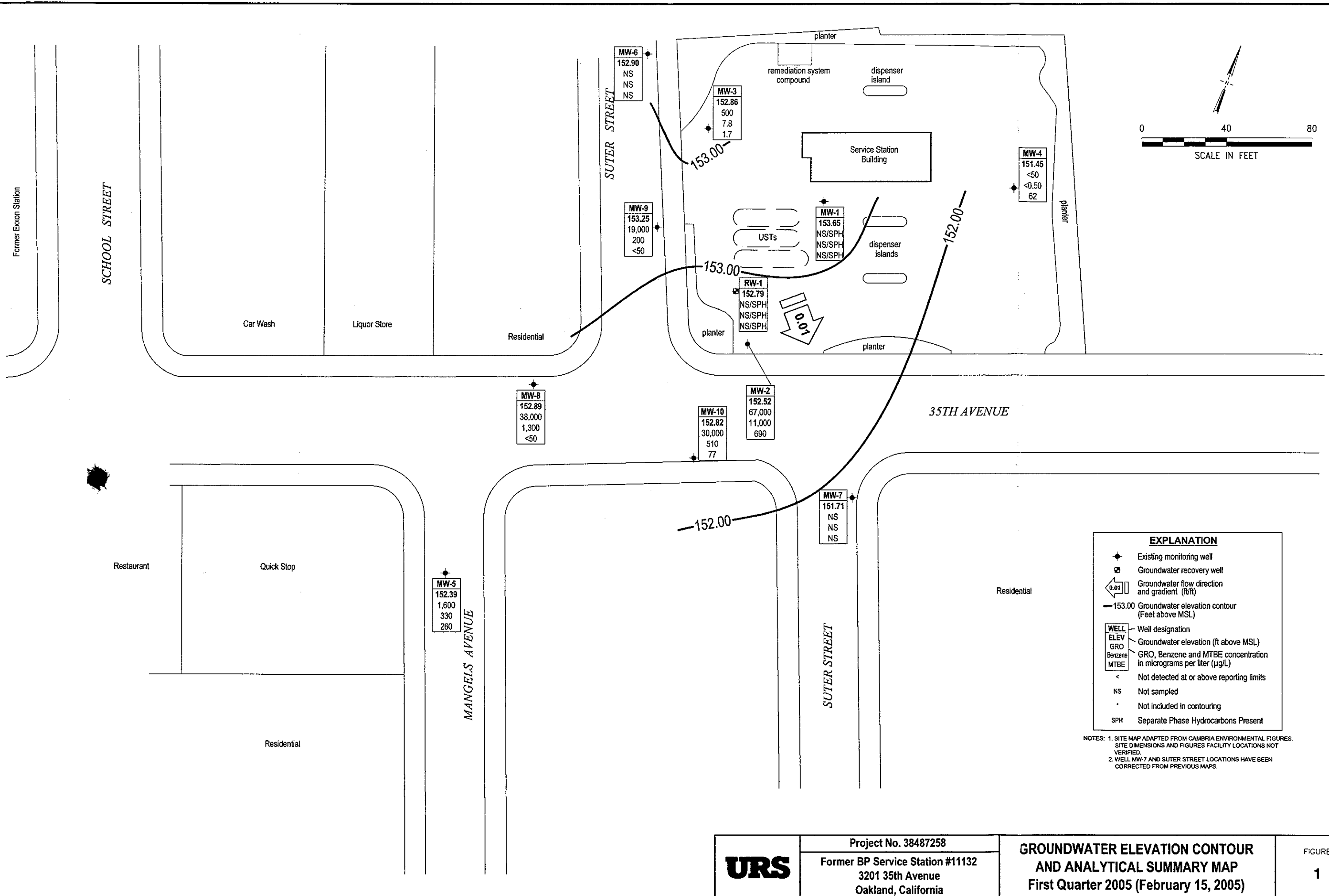
Well MW-1 and RW-1 could not be sampled due to the presence of free product; approximately 20 milliliters (ml) (0.005 gallons) of free product were bailed from well MW-1, and approximately 15 ml (0.004 gallons) were bailed from well RW-1 during the January 13, 2005 product gauging/ removal event. Approximately 24 ml (0.006 gallons) of free product were bailed from well MW-1, approximately 166 ml (0.043 gallons) of free product were bailed from well RW-1 during the February 15, 2005 monitoring event. Approximately 25 milliliters (ml) (0.007 gallons) of free product was bailed from well MW-1, and approximately 111 ml (0.03 gallons) was bailed from well RW-1 during the March 7, 2005 product gauging/ removal event.

As stated within the Fourth Quarter Groundwater Monitoring Report 2004, wells MW-6 and MW-7 were to be added to the annual sampling schedule for the Site starting First Quarter 2005 since the wells have not been sampled since 1998. Wells MW-6 and MW-7 were inadvertently not sampled First Quarter 2005. Wells MW-6 and MW-7 will be sampled Second Quarter 2005 and subsequently added to the first quarter annual sampling schedule.

ATTACHMENTS:

- Figure 1 – Groundwater Elevation Contour and Analytical Summary Map – February 15, 2005
- Table 1 – Groundwater Elevation and Analytical Data
- Table 2 – Fuel Additives Analytical Data
- Table 3 – Free Product Removal
- Attachment A – Field Procedures and Field Data Sheets
- Attachment B – Laboratory Procedures, Certified Analytical Reports, and Chain-of-Custody Records
- Attachment C – Error Check Reports and EDF/Geowell Submittal Confirmations

jking10 Apr 14, 2005 - 10:13am
 X:\x_env\waste\BP_GEM sites\L\Nites_Sites\11132\Drawings\11132-1005-GW.dwg



EXPLANATION	
	Existing monitoring well
	Groundwater recovery well
	Groundwater flow direction and gradient (ft/ft)
	153.00 Groundwater elevation contour (Feet above MSL)
WELL	Well designation
ELEV	Groundwater elevation (ft above MSL)
GRO	GRO, Benzene and MTBE concentration in micrograms per liter (µg/L)
Benzene	
MTBE	
<	Not detected at or above reporting limits
NS	Not sampled
*	Not included in contouring
SPH	Separate Phase Hydrocarbons Present

NOTES: 1. SITE MAP ADAPTED FROM CAMBRIA ENVIRONMENTAL FIGURES. SITE DIMENSIONS AND FIGURES FACILITY LOCATIONS NOT VERIFIED.
 2. WELL MW-7 AND SUTER STREET LOCATIONS HAVE BEEN CORRECTED FROM PREVIOUS MAPS.

URS	Project No. 38487258	GROUNDWATER ELEVATION CONTOUR AND ANALYTICAL SUMMARY MAP	FIGURE 1
	Former BP Service Station #11132 3201 35th Avenue Oakland, California		

Table 1

Groundwater Elevation and Analytical Data

Former BP Station #11132
3201 35th Ave, Oakland, CA

Well No.	Date	P/ NP	Well Elevation/ TOC (feet)	DTW (feet)	Product Thickness (feet)	GWE (feet)	GRO/ TPH-g (µg/L)	Benzene (µg/L)	Toluene (µg/L)	Ethyl-benzene (µg/L)	Total Xylenes (µg/L)	MTBE (µg/L)	DO (mg/L)	Lab	pH	Comments
MW-1	7/9/1990	--	169.75		0.22		--	--	--	--	--	--	--	--	--	
	12/21/1990	--	169.75		0.58		--	--	--	--	--	--	--	--	--	
	3/7/1991	--	169.75	20.59	--		--	--	--	--	--	--	--	--	--	
	4/1/1991	--	169.75	16.51	0.15	153.09	--	--	--	--	--	--	--	--	--	
	6/27/1991	--	169.75		0.18		--	--	--	--	--	--	--	--	--	
	9/27/1991	--	169.75		0.27		--	--	--	--	--	--	--	--	--	
	12/18/1991	--	169.75		0.28		--	--	--	--	--	--	--	--	--	
	7/3/1992	--	169.75	22.30	0.27	147.18	--	--	--	--	--	--	--	--	--	
	10/5/1992	--	169.75	23.98	0.24	145.53	--	--	--	--	--	--	--	--	--	
	1/13/1993	--	169.75	17.03	0.24	152.48	--	--	--	--	--	--	--	--	--	
	4/23/1993	--	169.75	18.10	0.42	151.23	--	--	--	--	--	--	--	--	--	
	7/12/1993	--	169.75	22.02	0.49	147.24	--	--	--	--	--	--	--	--	--	
	10/21/1993	--	169.75	25.12	1.09	143.54	--	--	--	--	--	--	--	--	--	
	1/21/1994	--	169.75	23.02	0.76	145.97	--	--	--	--	--	--	--	--	--	
	4/20/1994	--	169.75	24.54	1.80	143.41	--	--	--	--	--	--	--	--	--	
	8/1/1994	--	169.75	24.11	0.35	145.29	--	--	--	--	--	--	--	--	--	
	12/23/1994	--	169.75	18.19	0.29	151.27	--	--	--	--	--	--	--	--	--	
	1/26/1995	--	169.75	16.25	1.10	152.40	--	--	--	--	--	--	--	--	--	
	6/8/1995	--	169.75	22.92	1.20	145.63	--	--	--	--	--	--	--	--	--	
	8/22/1995	--	169.75	24.45	0.85	144.45	--	--	--	--	--	--	--	--	--	
	10/27/1995	--	169.75	25.41	0.69	143.65	--	--	--	--	--	--	--	--	--	
	1/25/1996	--	169.75	18.20	1.40	150.15	--	--	--	--	--	--	--	--	--	
	4/19/1996	--	169.75	19.06	1.22	149.47	--	--	--	--	--	--	--	--	--	
	7/23/1996	--	169.75	22.98	0.89	145.88	--	--	--	--	--	--	--	--	--	
	11/11/1996	--	169.75	23.99	0.98	144.78	--	--	--	--	--	--	--	--	--	
	1/21/1997	--	169.75	16.80	0.90	152.05	--	--	--	--	--	--	--	--	--	
	4/29/1997	--	169.75	21.90	0.85	147.00	--	--	--	--	--	--	--	--	--	
	4/30/1997	--	169.75	--	--	--	92,000	3,500	8,100	4,400	23,800	6,900	--	--	--	c
	4/30/1997	--	169.75	--	--	--	100,000	3,600	8,000	4,000	21,300	7,700	5.2	--	--	
	8/21/1997	--	169.75	--	--	--	120,000	3,200	8,100	3,800	19,600	5,200	--	--	--	c
	8/21/1997	--	169.75	23.40	0.87	145.48	140,000	3,000	8,500	3,900	22,100	5,700	5.3	--	--	
	11/5/1997	--	169.75	--	--	--	88,000	7,300	4,800	3,600	16,900	8,200	--	--	--	c
	11/5/1997	--	169.75	23.70	0.54	145.51	68,000	6,200	4,400	3,300	14,300	8,000	4.7	--	--	
	2/3/1998	--	169.75	13.63	0.32	155.80	--	--	--	--	--	--	--	--	--	

Table 1
Groundwater Elevation and Analytical Data
Former BP Station #11132
3201 35th Ave, Oakland, CA

Well No.	Date	P/ NP	Well Elevation/ TOC (feet)	DTW (feet)	Product Thickness (feet)	GWE (feet)	GRO/ TPH-g (µg/L)	Benzene (µg/L)	Toluene (µg/L)	Ethylbenzene (µg/L)	Total Xylenes (µg/L)	MTBE (µg/L)	DO (mg/L)	Lab	pH	Comments
MW-1	2/4/1998	--	169.75	--	--	--	160,000	2,300	8,400	5,000	29,400	<10000	--	--	--	c
	2/4/1998	--	169.75	--	--	--	190,000	2,200	10,000	5,600	32,000	<10000	5.3	--	--	
	5/28/1998	--	169.75	18.03	0.17	151.55	87,000	980	3,900	3,600	19,000	2,900	3.8	--	--	
	12/30/1998	--	169.75	19.50	0.08	150.17	70,000	530	3,200	2,900	16,000	3,600	--	--	--	
	2/2/1999	--	169.75	18.93	0.03	150.79	79,000	480	3,100	3,500	21,000	3,500	--	--	--	
	5/10/1999	--	169.75	18.28	0.03	151.44	110,000	160	1,900	3,700	24,000	3,000	--	--	--	
	8/24/1999	--	169.75	20.13	0.06	149.56	110,000	850	1,300	1,900	19,000	<50	--	--	--	
	11/3/1999	--	169.75	22.27	0.36	147.12	65,000	6,300	1,100	3,300	9,500	8,900	--	--	--	
	3/1/2000	--	169.75	14.79	0.23	154.73	--	--	--	--	--	--	--	--	--	h
	4/21/2000	--	169.75	18.10	0.33	151.32	61,000	330	780	2,700	17,000	1,300	--	--	--	
	7/31/2000	--	169.75	21.60	0.53	147.62	1,500,000	340	2,100	24,000	120,000	2,700	--	--	--	
	11/20/2000	--	169.75	21.69	0.37	147.69	1,700,000	1,800	2,300	19,000	93,000	3,900	--	--	--	
	2/18/2001	--	169.75	16.70	0.13	152.92	--	--	--	--	--	--	--	--	--	
	2/26/2001	--	169.75	14.38	0.15	155.22	100,000	658	466	4,210	15,000	1,890	--	--	--	
	6/7/2001	--	169.75	20.78	0.00	148.97	70,000	705	440	3,870	12,200	2,720	--	--	--	
	9/5/2001	--	169.75	23.36	0.35	146.04	--	--	--	--	--	--	--	--	--	
	11/30/2001	--	169.75	20.85	0.41	148.49	--	--	--	--	--	--	--	--	--	j
	12/6/2001	--	169.75	18.72	0.27	150.76	39,000	3,500	237	2,150	4,500	5,400	--	--	--	k
	2/20/2002	--	169.75	17.43	0.15	152.17	52,000	465	271	1,600	11,400	106	--	--	--	
	6/20/2002	--	169.75	21.18	0.34	148.23	--	--	--	--	--	--	--	--	--	j
	9/11/2002	--	169.75	22.86	0.40	146.49	--	--	--	--	--	--	--	--	--	j
	11/12/2002	--	169.75	22.65	0.37	146.73	--	--	--	--	--	--	--	--	--	j
	1/29/2003	--	169.75	18.15	0.30	151.30	--	--	--	--	--	--	--	--	--	j,n
	5/22/2003	--	169.75	18.49	0.20	151.06	--	--	--	--	--	--	--	--	--	j
	6/24/2003	--	169.75	21.44	0.35	147.96	--	--	--	--	--	--	--	--	--	o
	7/28/2003	--	169.75	22.72	0.35	146.68	--	--	--	--	--	--	--	--	--	j
	8/12/2003	--	169.75	22.64	0.23	146.88	--	--	--	--	--	--	--	--	--	o
	9/12/2003	--	169.75	20.70	0.24	148.81	--	--	--	--	--	--	--	--	--	o
	11/18/2003	NP	169.75	21.70	0.25	148.25	--	--	--	--	--	--	--	--	--	
	02/23/2004	NP	169.75	16.34	0.09	153.48	--	--	--	--	--	--	--	--	--	
	05/04/2004	NP	169.75	21.28	0.16	148.60	--	--	--	--	--	--	--	--	--	
	08/04/2004	--	169.75	22.54	0.10	147.29	--	--	--	--	--	--	--	--	--	
	09/22/2004	NP	169.75	22.76	0.20	147.15	--	--	--	--	--	--	--	--	--	
	11/10/2004	--	169.75	20.19	0.14	149.67	--	--	--	--	--	--	--	--	--	

Table 1
Groundwater Elevation and Analytical Data
Former BP Station #11132
3201 35th Ave, Oakland, CA

Well No.	Date	P/ NP	Well Elevation/ TOC (feet)	DTW (feet)	Product Thickness (feet)	GWE (feet)	GRO/ TPH-g (µg/L)	Benzene (µg/L)	Toluene (µg/L)	Ethyl-benzene (µg/L)	Total Xylenes (µg/L)	MTBE (µg/L)	DO (mg/L)	Lab	pH	Comments
MW-1	01/13/2005	--	169.75	14.58	0.03	155.19	--	--	--	--	--	--	--	--	--	
	02/15/2005	--	169.75	16.13	0.04	153.65	--	--	--	--	--	--	--	--	--	
	03/07/2005	--	169.75	13.31	0.01	156.45	--	--	--	--	--	--	--	--	--	
MW-2	7/9/1990	--	168.14		0.10		--	--	--	--	--	--	--	--	--	
	12/21/1990	--	168.14		0.48		--	--	--	--	--	--	--	--	--	
	3/7/1991	--	168.14	19.18	--		--	--	--	--	--	--	--	--	--	
	4/1/1991	--	168.14	15.21	0.10	152.83	--	--	--	--	--	--	--	--	--	
	6/27/1991	--	168.14		0.19		--	--	--	--	--	--	--	--	--	
	9/27/1991	--	168.14		0.15		--	--	--	--	--	--	--	--	--	
	12/18/1991	--	168.14		0.36		--	--	--	--	--	--	--	--	--	
	7/3/1992	--	168.14	20.93	0.03	147.18	--	--	--	--	--	--	--	--	--	
	10/5/1992	--	168.14	22.74	0.21	145.19	--	--	--	--	--	--	--	--	--	
	1/13/1993	--	168.14	15.55	0.02	152.57	--	--	--	--	--	--	--	--	--	
	4/23/1993	--	168.14	16.54	0.21	151.39	--	--	--	--	--	--	--	--	--	
	7/12/1993	--	168.14	20.46	0.06	147.62	--	--	--	--	--	--	--	--	--	
	10/21/1993	--	168.14	24.91	0.31	142.92	--	--	--	--	--	--	--	--	--	
	1/21/1994	--	168.14	21.20	--	146.94	--	--	--	--	--	--	--	--	--	
	4/20/1994	--	168.14	22.44	--	145.70	1,800	140	370	54	290	24	1.7	--	--	i
	8/1/1994	--	168.14	22.24	0.04	145.86	--	--	--	--	--	--	--	--	--	
	12/23/1994	--	168.14	16.25	0.03	151.86	--	--	--	--	--	--	--	--	--	
	1/26/1995	--	168.14	14.55	0.39	153.20	--	--	--	--	--	--	--	--	--	
	6/8/1995	--	168.14	21.18	0.43	146.53	--	--	--	--	--	--	--	--	--	
	8/22/1995	--	168.14	22.76	0.36	145.02	--	--	--	--	--	--	--	--	--	
	10/27/1995	--	168.14	23.61	0.30	144.23	--	--	--	--	--	--	--	--	--	
	1/25/1996	--	168.14	15.95	0.15	152.04	--	--	--	--	--	--	--	--	--	
	4/19/1996	--	168.14	17.33	0.07	150.74	--	--	--	--	--	--	--	--	--	
7/23/1996	--	168.14	21.25	0.05	146.84	--	--	--	--	--	--	--	--	--		
11/11/1996	--	168.14	22.27	0.01	145.86	--	--	--	--	--	--	--	--	--		
1/21/1997	--	168.14	15.19	0.01	152.94	--	--	--	--	--	--	--	--	--		
4/29/1997	--	168.14	20.22	0.01	147.91	--	--	--	--	--	--	--	--	--		
4/30/1997	--	168.14		--		130,000	4,600	15,000	6,000	37,000	<5000	5	--	--		
8/21/1997	--	168.14	21.74	0.01	146.39	110,000	6,000	16,000	4,700	28,000	<500	4.6	--	--		
11/5/1997	--	168.14	21.61	0.01	146.52	120,000	7,800	18,000	4,900	28,100	<2500	4.6	--	--		

Table 1
Groundwater Elevation and Analytical Data
Former BP Station #11132
3201 35th Ave, Oakland, CA

Well No.	Date	P/ NP	Well Elevation/ TOC (feet)	DTW (feet)	Product Thickness (feet)	GWE (feet)	GRO/ TPH-g (µg/L)	Benzene (µg/L)	Toluene (µg/L)	Ethyl-benzene (µg/L)	Total Xylenes (µg/L)	MTBE (µg/L)	DO (mg/L)	Lab	pH	Comments
MW-2	2/3/1998	--	168.14	11.51	--	156.63	75,000	590	1,500	1,800	12,800	<2500	4.5	--	--	
	5/28/1998	--	168.14	16.51	--	151.63	79,000	3,900	3,100	3,100	18,000	900	4.3	--	--	
	12/30/1998	--	168.14	17.70	--	150.44	95,000	4,700	3,500	3,700	21,000	<250	--	--	--	
	2/2/1999	--	168.14	15.46	--	152.68	170,000	3,500	1,500	5,200	34,000	<500	--	--	--	
	5/10/1999	--	168.14	16.52	--	151.62	84,000	3,200	3,200	3,700	20,000	75	--	--	--	
	8/24/1999	--	168.14	20.73	--	147.41	130,000	9,100	9,200	4,700	27,000	<250	--	--	--	
	11/3/1999	--	168.14	20.93	--	147.21	120,000	10,000	21,000	4,700	30,200	2,200	--	--	--	
	3/1/2000	--	168.14	13.37	--	154.77	39,000	1,400	1,500	1,700	8,100	44	--	--	--	
	4/21/2000	--	168.14	16.59	--	151.55	68,000	3,300	2,500	3,100	20,000	260	--	--	--	
	7/31/2000	--	168.14	16.37	--	151.77	99,000	5,600	1,400	4,300	22,000	490	--	--	--	
	11/20/2000	--	168.14	19.71	--	148.43	37,000	5,100	1,500	1,300	4,800	2,800	--	--	--	
	2/18/2001	--	168.14	15.29	--	152.85	54,000	5,020	3,880	2,850	15,400	1,010	--	--	--	
	6/7/2001	--	168.14	19.43	--	148.71	110,000	7,240	4,380	4,160	22,100	567	--	--	--	
	9/5/2001	--	168.14	22.44	--	145.70	69,000	5,750	5,790	2,770	14,200	1,510	--	--	--	
	11/30/2001	--	168.14	19.58	--	148.56	120,000	7,270	6,540	4,590	23,000	794	--	--	--	
	2/20/2002	--	168.14	16.39	--	151.75	56,000	2,410	2,270	2,910	14,300	160	--	--	--	
	6/20/2002	--	168.14	19.77	--	148.37	86,000	7,310	6,490	3,080	14,600	659	--	--	--	
	9/11/2002	--	168.14	21.60	--	146.54	130,000	7,600	13,000	5,400	30,000	<5000	--	--	--	
	11/12/2002	--	168.14	21.34	--	146.80	46,000	4,100	4,300	1,900	10,000	1,900	--	--	--	t
	1/29/2003	--	168.14	16.80	--	151.34	77,000	4,700	2,600	2,800	13,000	820	--	--	--	n,t
	5/22/2003	--	168.14	17.15	--	150.99	52,000	6,400	2,600	1,800	7,400	1,000	--	--	--	t
	7/28/2003	--	168.14	21.47	--	146.67	31,000	6,900	5,500	2,200	12,000	1,700	--	--	--	p
	11/18/2003	P	168.14	20.50	--	147.64	23,000	3,300	800	500	2,000	500	--	SEQM	6.6	
	02/23/2004	P	168.14	14.77	--	153.37	84,000	14,000	6,200	3,100	14,000	790	--	SEQM	6.6	t
	05/04/2004	P	168.14	20.09	--	148.05	120,000	15,000	17,000	4,900	24,000	780	--	SEQM	6.6	t
	08/04/2004	P	168.14	21.39	--	146.75	38,000	9,100	3,300	1,900	5,800	430	--	SEQM	6.69	t
	11/10/2004	P	168.14	18.98	--	149.16	22,000	4,400	2,000	940	3,600	310	--	SEQM	7.5	
	02/15/2005	P	168.14	15.62	--	152.52	67,000	11,000	4,200	3,000	11,000	690	--	SEQM	7.1	t
MW-3	7/9/1990	--	167.17		--		140	5.3	4.6	2	3.8	--	--	--	--	
	12/21/1990	--	167.17		--		0.19	100	6	0.9	27	--	--	--	--	
	3/7/1991	--	167.17	17.40	--	149.77	0.4	69	22	6.1	57	--	--	--	--	
	4/1/1991	--	167.17	13.69	--	153.48	--	--	--	--	--	--	--	--	--	
	6/27/1991	--	167.17		--		380	28	26	13	46	--	--	--	--	

Table 1
Groundwater Elevation and Analytical Data
Former BP Station #11132
3201 35th Ave, Oakland, CA

Well No.	Date	P/ NP	Well Elevation/ TOC (feet)	DTW (feet)	Product Thickness (feet)	GWE (feet)	GRO/ TPH-g (µg/L)	Benzene (µg/L)	Toluene (µg/L)	Ethyl-benzene (µg/L)	Total Xylenes (µg/L)	MTBE (µg/L)	DO (mg/L)	Lab	pH	Comments
MW-3	9/27/1991	--	167.17		--		0.07	7.9	--	0.4	1.1	--	--	--	--	
	12/18/1991	--	167.17		--		0.26	34	24	0.8	28	--	--	--	--	
	7/3/1992	--	167.17	19.59	--	147.58	71	9.4	0.9	5	13	--	--	--	--	
	10/5/1992	--	167.17	--	--	--	<50	2.2	<0.5	1.5	2.8	--	--	--	--	c
	10/5/1992	--	167.17	21.22	--	145.95	67	5.1	1.1	6.1	8.1	--	--	--	--	
	1/13/1993	--	167.17	13.63	--	153.54	830	50	34	42	89	--	--	--	--	i
	4/23/1993	--	167.17	--	--	--	<50	<0.5	<0.5	<0.5	<0.5	--	--	--	--	c,i
	4/23/1993	--	167.17	15.02	--	152.15	<50	<0.5	<0.5	<0.5	<0.5	--	--	--	--	i
	7/12/1993	--	167.17	19.16	--	148.01	250	12	4.2	12	16	<5.0	--	--	--	i
	10/21/1993	--	167.17	--	--	--	65	7.4	1	6.9	4.2	--	--	--	--	c
	10/21/1993	--	167.17	21.81	--	145.36	52	4.4	1.4	4.7	3.3	<5.0	--	--	--	i
	1/21/1994	--	167.17	19.94	--	147.23	57	3	3.4	3.6	9	<5.0	--	--	--	i
	4/20/1994	--	167.17	20.24	--	146.93	600	26	23	33	88	28.7	1.8	--	--	i
	8/1/1994	--	167.17	--	--	--	120	7.7	1.6	5.9	6.7	5.43	--	--	--	c,i
	8/1/1994	--	167.17	20.74	--	146.43	99	6.2	1.1	4.5	5.2	<5.0	1.4	--	--	i
	12/23/1994	--	167.17	--	--	--	<50	<0.5	<0.5	<0.5	<0.5	--	--	--	--	c
	12/23/1994	--	167.17	14.70	--	152.47	<50	<0.5	0.78	<0.5	<0.5	9.8	1.7	--	--	i
	1/26/1995	--	167.17	12.89	--	154.28	190	16	0.5	35	24	--	6.6	--	--	d
	6/8/1995	--	167.17	19.95	--	147.22	330	21	4	34	32	--	7	--	--	
	8/22/1995	--	167.17	21.41	--	145.76	150	14	<0.50	<0.50	1.6	<5.0	6.6	--	--	d
	10/27/1995	--	167.17	22.43	--	144.74	--	--	--	--	--	--	--	--	--	
	10/30/1995	--	167.17		--		51	2.4	<0.50	<0.50	<1.0	<5.0	6.9	--	--	
	1/25/1996	--	167.17	14.03	--	153.14	<50	<0.50	<0.50	<0.50	<1.0	5.1	--	--	--	
	4/19/1996	--	167.17	15.26	--	151.91	460	55	4	33	63	<10	9.4	--	--	
	7/23/1996	--	167.17	19.19	--	147.98	<50	<0.5	<0.5	<0.5	<0.5	<10	9.2	--	--	
	11/11/1996	--	167.17	20.24	--	146.93	<250	<2.5	<5.0	<5.0	<5.0	<50	8.4	--	--	
	1/21/1997	--	167.17	13.09	--	154.08	<50	<0.5	<1.0	<1.0	<1.0	<10	5.4	--	--	
	4/29/1997	--	167.17	18.14	--	149.03	<50	<0.5	<1.0	<1.0	<1.0	<10	4.3	--	--	
	8/21/1997	--	167.17	19.64	--	147.53	<50	<0.5	<1.0	<1.0	<1.0	<10	4.9	--	--	
	11/5/1997	--	167.17	19.95	--	147.22	<250	<2.5	<5.0	<5.0	<5.0	<50	4.5	--	--	
	2/3/1998	--	167.17	10.57	--	156.60	<50	<0.50	<1.0	<1.0	<1.0	<10	4.7	--	--	
	5/28/1998	--	167.17	14.65	--	152.52	330	<2.5	<5.0	<5.0	<5.0	<50	4.2	--	--	
	12/30/1998	--	167.17	16.63	--	150.54	--	--	--	--	--	--	--	--	--	
	2/2/1999	--	167.17	13.12	--	154.05	<250	<5.0	<5.0	<5.0	<5.0	<5.0	--	--	--	

Table 1
Groundwater Elevation and Analytical Data
Former BP Station #11132
3201 35th Ave, Oakland, CA

Well No.	Date	P/ NP	Well Elevation/ TOC (feet)	DTW (feet)	Product Thickness (feet)	GWE (feet)	GRO/ TPH-g (µg/L)	Benzene (µg/L)	Toluene (µg/L)	Ethyl-benzene (µg/L)	Total Xylenes (µg/L)	MTBE (µg/L)	DO (mg/L)	Lab	pH	Comments
MW-3	5/10/1999	--	167.17	14.21	--	152.96	--	--	--	--	--	--	--	--	--	
	8/24/1999	--	167.17	14.36	--	152.81	--	--	--	--	--	--	--	--	--	
	11/3/1999	--	167.17	19.21	--	147.96	--	--	--	--	--	--	--	--	--	
	3/1/2000	--	167.17	15.17	--	152.00	<50	<0.5	0.57	<0.5	0.62	<0.5	--	--	--	
	4/21/2000	--	167.17	14.88	--	152.29	--	--	--	--	--	--	--	--	--	
	7/31/2000	--	167.17	15.29	--	151.88	--	--	--	--	--	--	--	--	--	
	11/20/2000	--	167.17	17.31	--	149.86	--	--	--	--	--	--	--	--	--	
	2/18/2001	--	167.17	12.85	--	154.32	160	1.95	1.31	10.2	9.09	1	--	--	--	
	6/7/2001	--	167.17	18.00	--	149.17	--	--	--	--	--	--	--	--	--	
	9/5/2001	--	167.17	20.32	--	146.85	--	--	--	--	--	--	--	--	--	
	11/30/2001	--	167.17	16.94	--	150.23	--	--	--	--	--	--	--	--	--	
	2/20/2002	--	167.17	14.84	--	152.33	86	<0.5	0.845	6.58	5.75	<0.5	--	--	--	
	6/20/2002	--	167.17	18.40	--	148.77	--	--	--	--	--	--	--	--	--	
	9/11/2002	--	167.17	20.06	--	147.11	--	--	--	--	--	--	--	--	--	
	11/12/2002	--	167.17	19.84	--	147.33	--	--	--	--	--	--	--	--	--	
	1/27/2003	--	167.17	14.83	--	152.34	850	20	9.7	24	45	0.76	--	--	--	n
	5/22/2003	--	167.17	15.60	--	151.57	--	--	--	--	--	--	--	--	--	
	7/28/2003	--	167.17	20.12	--	147.05	--	--	--	--	--	--	--	--	--	p
	11/18/2003	--	167.17	19.15	--	148.02	--	--	--	--	--	--	--	--	--	
	02/23/2004	--	167.17	13.53	--	153.64	160	<0.50	1.1	9.6	12	<0.50	--	SEQM	6.7	
	05/04/2004	--	167.17	18.61	--	148.56	--	--	--	--	--	--	--	--	--	
	08/04/2004	--	167.17	19.21	--	147.96	--	--	--	--	--	--	--	--	--	
	11/10/2004	--	167.17	17.48	--	149.69	--	--	--	--	--	--	--	--	--	
	02/15/2005	P	167.17	14.31	--	152.86	500	7.8	1.8	9.2	9.6	1.7	--	SEQM	7.5	
MW-4	7/9/1990	--	170.36		--		--	--	--	--	--	--	--	--	--	
	12/21/1990	--	170.36		--		--	--	--	--	0.8	--	--	--	--	
	3/7/1991	--	170.36	20.72	--	149.64	--	2.2	3.8	1.5	2.8	--	--	--	--	
	4/1/1991	--	170.36	17.49	--	152.87	--	--	--	--	--	--	--	--	--	
	6/27/1991	--	170.36		--		--	6.3	1.8	0.4	1	--	--	--	--	
	9/27/1991	--	170.36		--		--	--	--	--	--	--	--	--	--	
	12/18/1991	--	170.36		--		--	--	--	--	--	--	--	--	--	
	7/3/1992	--	170.36	22.16	--	148.20	<50	<0.5	<0.5	<0.5	<0.5	--	--	--	--	
	10/5/1992	--	170.36	23.38	--	146.98	<50	<0.5	<0.5	<0.5	<0.5	--	--	--	--	

Table 1
Groundwater Elevation and Analytical Data
Former BP Station #11132
3201 35th Ave, Oakland, CA

Well No.	Date	P/ NP	Well Elevation/ TOC (feet)	DTW (feet)	Product Thickness (feet)	GWE (feet)	GRO/ TPH-g (µg/L)	Benzene (µg/L)	Toluene (µg/L)	Ethyl-benzene (µg/L)	Total Xylenes (µg/L)	MTBE (µg/L)	DO (mg/L)	Lab	pH	Comments
MW-4	1/13/1993	--	170.36	17.58	--	152.78	<50	<0.5	<0.5	<0.5	<0.5	--	--	--	--	i
	4/23/1993	--	170.36	15.72	--	154.64	<50	<0.5	<0.5	<0.5	<0.5	--	--	--	--	i
	7/12/1993	--	170.36	21.74	--	148.62	<50	<0.5	<0.5	<0.5	<0.5	<5.0	--	--	--	i
	10/21/1993	--	170.36	23.84	--	146.52	<50	<0.5	<0.5	<0.5	<0.5	<5.0	--	--	--	i
	1/21/1994	--	170.36	22.42	--	147.94	<50	<0.5	<0.5	<0.5	<0.5	<5.0	--	--	--	i
	4/20/1994	--	170.36	22.66	--	147.70	<50	<0.5	<0.5	<0.5	<0.5	<5.0	2.2	--	--	i
	8/1/1994	--	170.36	23.01	--	147.35	<50	<0.5	<0.5	<0.5	<0.5	<5.0	1.9	--	--	i
	12/23/1994	--	170.36	17.03	--	153.33	--	--	--	--	--	--	--	--	--	
	1/26/1995	--	170.36	17.42	--	152.94	<50	<0.5	<0.5	<0.5	<1	--	7.5	--	--	
	6/8/1995	--	170.36	21.55	--	148.81	--	--	--	--	--	--	--	--	--	
	8/22/1995	--	170.36	23.47	--	146.89	<50	<0.50	<0.50	<0.50	<1.0	<5.0	6.4	--	--	d
	10/27/1995	--	170.36	24.50	--	145.86	--	--	--	--	--	--	--	--	--	
	1/25/1996	--	170.36	18.74	--	151.62	<50	<0.50	<0.50	<0.50	<1.0	58	--	--	--	
	4/19/1996	--	170.36	18.63	--	151.73	--	--	--	--	--	--	--	--	--	
	7/23/1996	--	170.36	22.56	--	147.80	--	--	--	--	--	--	--	--	--	
	11/11/1996	--	170.36	23.63	--	146.73	<50	<1.0	<1.0	<1.0	<1.0	34	8.2	--	--	
	1/21/1997	--	170.36	16.59	--	153.77	--	--	--	--	--	--	--	--	--	
	4/29/1997	--	170.36	21.43	--	148.93	<50	<0.5	<1.0	<1.0	<1.0	<10	4.7	--	--	
	8/21/1997	--	170.36	22.91	--	147.45	--	--	--	--	--	--	--	--	--	
	11/5/1997	--	170.36	22.34	--	148.02	60	<0.5	<1.0	<1.0	<1.0	76	4.9	--	--	
	2/3/1998	--	170.36	12.26	--	158.10	--	--	--	--	--	--	--	--	--	
	5/28/1998	--	170.36	18.50	--	151.86	70	<0.5	<1.0	<1.0	<1.0	160	4.2	--	--	
	12/30/1998	--	170.36	19.69	--	150.67	--	--	--	--	--	--	--	--	--	
	2/2/1999	--	170.36	18.26	--	152.10	70	<1.0	<1.0	<1.0	<1.0	130	--	--	--	
	5/10/1999	--	170.36	17.86	--	152.50	--	--	--	--	--	--	--	--	--	
	8/24/1999	--	170.36	17.93	--	152.43	--	--	--	--	--	--	--	--	--	
	11/3/1999	--	170.36	22.78	--	147.58	--	--	--	--	--	--	--	--	--	
	3/1/2000	--	170.36	18.04	--	152.32	<50	<0.5	0.67	<0.5	0.7	110	--	--	--	
	4/21/2000	--	170.36	17.36	--	153.00	--	--	--	--	--	--	--	--	--	
	7/31/2000	--	170.36	17.83	--	152.53	--	--	--	--	--	--	--	--	--	
	11/20/2000	--	170.36	18.91	--	151.45	--	--	--	--	--	--	--	--	--	
	2/18/2001	--	170.36	17.72	--	152.64	88	<0.5	<0.5	<0.5	<0.5	97.3	--	--	--	
	6/7/2001	--	170.36	20.23	--	150.13	--	--	--	--	--	--	--	--	--	
	9/5/2001	--	170.36	22.76	--	147.60	--	--	--	--	--	--	--	--	--	

Table 1
Groundwater Elevation and Analytical Data
Former BP Station #11132
3201 35th Ave, Oakland, CA

Well No.	Date	P/ NP	Well Elevation/ TOC (feet)	DTW (feet)	Product Thickness (feet)	GWE (feet)	GRO/ TPH-g (µg/L)	Benzene (µg/L)	Toluene (µg/L)	Ethyl-benzene (µg/L)	Total Xylenes (µg/L)	MTBE (µg/L)	DO (mg/L)	Lab	pH	Comments
MW-4	11/30/2001	--	170.36	21.30	--	149.06	--	--	--	--	--	--	--	--	--	
	2/20/2002	--	170.36	19.32	--	151.04	76	<0.5	<0.5	<0.5	<1.0	81	--	--	--	
	6/20/2002	--	170.36	20.71	--	149.65	--	--	--	--	--	--	--	--	--	
	9/11/2002	--	170.36	22.22	--	148.14	--	--	--	--	--	--	--	--	--	
	11/12/2002	--	170.36	22.22	--	148.14	--	--	--	--	--	--	--	--	--	
	1/29/2003	--	170.36	19.80	--	150.56	100	<0.5	<0.5	<0.5	<0.5	66	--	--	--	n
	5/22/2003	--	170.36	19.35	--	151.01	--	--	--	--	--	--	--	--	--	
	7/28/2003	--	170.36	22.18	--	148.18	--	--	--	--	--	--	--	--	--	p
	11/18/2003	--	170.36	21.65	--	148.71	--	--	--	--	--	--	--	--	--	
	02/23/2004	P	170.36	17.53	--	152.83	75	<0.50	<0.50	<0.50	<0.50	65	--	SEQM	6.8	
	05/04/2004	--	170.36	20.62	--	149.74	--	--	--	--	--	--	--	--	--	
	08/04/2004	--	170.36	21.30	--	149.06	--	--	--	--	--	--	--	--	--	
	11/10/2004	--	170.36	20.65	--	149.71	--	--	--	--	--	--	--	--	--	
	02/15/2005	P	170.36	18.91	--	151.45	<50	<0.50	<0.50	<0.50	<0.50	62	--	SEQM	7.6	
MW-5	7/9/1990	--	165.14		--		280	200	210	46	290	--	--	--	--	
	12/21/1990	--	165.14		--		0.69	300	34	8.4	39	--	--	--	--	
	3/7/1991	--	165.14	16.60	--	148.54	--	17	0.9	0.7	1.6	--	--	--	--	
	4/1/1991	--	165.14	11.99	--	153.15	800	250	54	11	60	--	--	--	--	
	6/27/1991	--	165.14		--		330	120	10	12	8	--	--	--	--	
	9/27/1991	--	165.14		--		0.73	230	16	20	22	--	--	--	--	
	12/18/1991	--	165.14		--		--	--	--	--	--	--	--	--	--	
	7/3/1992	--	165.14	18.65	--	146.49	150	36	<0.5	<0.5	1.1	--	--	--	--	
	10/5/1992	--	165.14	20.32	--	144.82	270	79	4	1.7	2.9	--	--	--	--	
	1/13/1993	--	165.14	13.03	--	152.11	180	59	6	1.8	7.6	--	--	--	--	i
	4/23/1993	--	165.14	13.51	--	151.63	8,700	440	96	35	136	--	--	--	--	i
	7/12/1993	--	165.14	18.06	--	147.08	250	57	2.9	2.1	6	<5.0	--	--	--	i
	10/21/1993	--	165.14	20.41	--	144.73	210	82	1.5	<0.5	1.4	--	--	--	--	i
	1/21/1994	--	165.14	18.86	--	146.28	110	36	1.2	<0.5	0.7	<5.0	--	--	--	i
	4/20/1994	--	165.14	17.30	--	147.84	690	230	4.5	1.6	11	21.2	1.3	--	--	i
	8/1/1994	--	165.14	17.53	--	147.61	170	44	1.6	0.9	2.7	<5.0	0.9	--	--	i
	12/23/1994	--	165.14	11.63	--	153.51	630	180	1.9	0.66	1.9	7.81	1.4	--	--	i
	1/26/1995	--	165.14	11.25	--	153.89	160	68	<0.5	<0.5	22	--	5.9	--	--	
	6/8/1995	--	165.14	--	--	--	1,700	560	51	55	170	--	--	--	--	c

Table 1
Groundwater Elevation and Analytical Data
Former BP Station #11132
3201 35th Ave, Oakland, CA

Well No.	Date	P/ NP	Well Elevation/ TOC (feet)	DTW (feet)	Product Thickness (feet)	GWE (feet)	GRO/ TPH-g (µg/L)	Benzene (µg/L)	Toluene (µg/L)	Ethyl-benzene (µg/L)	Total Xylenes (µg/L)	MTBE (µg/L)	DO (mg/L)	Lab	pH	Comments
MW-5	6/8/1995	--	165.14	16.80	--	148.34	2,000	530	58	61	180	--	6.5	--	--	
	8/22/1995	--	165.14	19.02	--	146.12	3,700	1,100	18	27	59	<130	7.3	--	--	d
	10/27/1995	--	165.14	20.94	--	144.20	--	--	--	--	--	--	--	--	--	
	10/30/1995	--	165.14		--		6,500	2,200	55	180	270	<250	7.5	--	--	
	1/25/1996	--	165.14	--	--	--	540	37	0.66	<0.50	<1.0	<5.0	--	--	--	c
	1/25/1996	--	165.14	13.30	--	151.84	590	37	0.7	<0.50	<1.0	<5.0	--	--	--	
	4/19/1996	--	165.14	13.63	--	151.51	1,500	470	38	49	210	<50	8.1	--	--	
	7/23/1996	--	165.14	17.61	--	147.53	140	4.6	<0.5	<0.5	<0.5	<10	8	--	--	
	11/11/1996	--	165.14	18.70	--	146.44	140	40	<1.0	<1.0	<1.0	<10	7.9	--	--	
	1/21/1997	--	165.14	11.63	--	153.51	730	300	<5.0	7.8	26	<50	5	--	--	
	4/29/1997	--	165.14	16.74	--	148.40	340	530	<5.0	<5.0	<5.0	<50	4.8	--	--	
	8/21/1997	--	165.14	18.26	--	146.88	<50	<0.5	<1.0	<1.0	<1.0	<10	4.9	--	--	
	11/5/1997	--	165.14	18.84	--	146.30	120	13	<1.0	<1.0	<1.0	<10	4.4	--	--	
	2/3/1998	--	165.14	9.49	--	155.65	<50	<0.50	<1.0	<1.0	<1.0	<10	4.3	--	--	
	5/28/1998	--	165.14	13.57	--	151.57	4,900	1,500	34	180	311	<10	4.1	--	--	
	12/30/1998	--	165.14	14.65	--	150.49	--	--	--	--	--	--	--	--	--	
	2/2/1999	--	165.14	12.56	--	152.58	100	<1.0	<1.0	<1.0	<1.0	9.1	--	--	--	
	5/10/1999	--	165.14	13.36	--	151.78	--	--	--	--	--	--	--	--	--	
	8/24/1999	--	165.14	13.50	--	151.64	--	--	--	--	--	--	--	--	--	
	11/3/1999	--	165.14	18.48	--	146.66	--	--	--	--	--	--	--	--	--	
	3/1/2000	--	165.14	9.59	--	155.55	<50	<0.5	0.58	<0.5	0.54	2.9	--	--	--	
	4/21/2000	--	165.14	13.52	--	151.62	--	--	--	--	--	--	--	--	--	
	7/31/2000	--	165.14	14.04	--	151.10	--	--	--	--	--	--	--	--	--	
	11/20/2000	--	165.14	15.89	--	149.25	--	--	--	--	--	--	--	--	--	
	2/18/2001	--	165.14	11.88	--	153.26	560	161	2.38	6.11	13	5.67	--	--	--	
	6/7/2001	--	165.14	15.30	--	149.84	--	--	--	--	--	--	--	--	--	
	9/5/2001	--	165.14	19.32	--	145.82	--	--	--	--	--	--	--	--	--	
	11/30/2001	--	165.14	17.44	--	147.70	--	--	--	--	--	--	--	--	--	
	2/20/2002	--	165.14	13.88	--	151.26	4,200	940	18.7	98.2	176	55.6	--	--	--	
	6/20/2002	--	165.14	16.20	--	148.94	--	--	--	--	--	--	--	--	--	
	9/11/2002	--	165.14	19.15	--	145.99	--	--	--	--	--	--	--	--	--	
	11/12/2002	--	165.14	19.01	--	146.13	390	55	0.89	3.4	3.5	210	--	--	--	
	1/29/2003	--	165.14	16.33	--	148.81	7,900	1,400	34	220	350	82	--	--	--	n
	5/22/2003	--	165.14	14.35	--	150.79	9,900	2,300	91	400	690	<50	--	--	--	

Table 1
Groundwater Elevation and Analytical Data
Former BP Station #11132
3201 35th Ave, Oakland, CA

Well No.	Date	P/ NP	Well Elevation/ TOC (feet)	DTW (feet)	Product Thickness (feet)	GWE (feet)	GRO/ TPH-g (µg/L)	Benzene (µg/L)	Toluene (µg/L)	Ethylbenzene (µg/L)	Total Xylenes (µg/L)	MTBE (µg/L)	DO (mg/L)	Lab	pH	Comments
MW-5	7/28/2003	--	165.14	18.90	--	146.24	3,200	690	14	81	100	120	--	--	--	p
	11/18/2003	--	165.14	--	--	--	--	--	--	--	--	--	--	--	--	e, q
	02/23/2004	P	165.14	12.21	--	152.93	7,500	1,500	100	190	350	100	--	SEQM	6.7	
	05/04/2004	P	165.14	17.12	--	148.02	5,900	1,500	57	200	280	42	--	SEQM	6.6	
	08/04/2004	P	165.14	19.05	--	146.09	<2,500	<25	<25	<25	<25	390	--	SEQM	6.69	
	11/10/2004	P	165.14	16.95	--	148.19	870	80	<5.0	<5.0	<5.0	530	--	SEQM	7.5	
	02/15/2005	P	165.14	12.75	--	152.39	1,600	330	8.0	37	67	260	--	SEQM	7.2	
MW-6	7/9/1990	--	165.4		--		--	--	--	--	--	--	--	--	--	
	12/21/1990	--	165.4		--		0.17	2.6	7	4.9	26	--	--	--	--	
	3/7/1991	--	165.4		--		--	--	--	--	--	--	--	--	--	e
	4/1/1991	--	165.4	11.79	--	153.61	--	--	--	--	--	--	--	--	--	
	6/27/1991	--	165.4		--		--	--	--	--	--	--	--	--	--	e
	9/27/1991	--	165.4		--		--	--	--	--	--	--	--	--	--	e
	12/18/1991	--	165.4		--		--	1.3	22	--	2.7	--	--	--	--	
	7/3/1992	--	165.4	17.77	--	147.63	<50	<0.5	<0.5	<0.5	<0.5	--	--	--	--	
	10/5/1992	--	165.4	19.46	--	145.94	<50	<0.5	<0.5	<0.5	<0.5	--	--	--	--	
	1/13/1993	--	165.4	11.34	--	154.06	<50	<0.5	<0.5	<0.5	<0.5	--	--	--	--	i
	4/23/1993	--	165.4	12.92	--	152.48	<50	<0.5	<0.5	<0.5	<0.5	--	--	--	--	i
	7/12/1993	--	165.4	17.36	--	148.04	<50	<0.5	<0.5	<0.5	0.7	<5.0	--	--	--	i
	10/21/1993	--	165.4	19.98	--	145.42	<50	<0.5	<0.5	<0.5	<0.5	--	--	--	--	i
	1/21/1994	--	165.4	18.10	--	147.30	<50	<0.5	<0.5	<0.5	<0.5	<5.0	--	--	--	i
	4/20/1994	--	165.4	18.68	--	146.72	<50	<0.5	<0.5	<0.5	<0.5	17.4	2	--	--	i
	8/1/1994	--	165.4	18.90	--	146.50	<50	<0.5	<0.5	<0.5	<0.5	8.66	1.5	--	--	i
	12/23/1994	--	165.4	12.94	--	152.46	--	--	--	--	--	--	--	--	--	
	1/26/1995	--	165.4	10.46	--	154.94	<50	<0.5	<0.5	<0.5	<1	--	7.3	--	--	
	6/8/1995	--	165.4	16.84	--	148.56	--	--	--	--	--	--	--	--	--	
	8/22/1995	--	165.4	19.48	--	145.92	<50	<0.50	<0.50	<0.50	<1.0	<5.0	6.7	--	--	d
	10/27/1995	--	165.4	20.39	--	145.01	--	--	--	--	--	--	--	--	--	
	1/25/1996	--	165.4	12.24	--	153.16	<50	<0.50	<0.50	<0.50	<1.0	9.9	--	--	--	
	4/19/1996	--	165.4	13.90	--	151.50	--	--	--	--	--	--	--	--	--	
	7/23/1996	--	165.4	17.83	--	147.57	--	--	--	--	--	--	--	--	--	
	11/11/1996	--	165.4	18.90	--	146.50	<50	<0.5	<1.0	<1.0	<1.0	<10	7.7	--	--	
	1/21/1997	--	165.4	11.97	--	153.43	--	--	--	--	--	--	--	--	--	

Table 1
Groundwater Elevation and Analytical Data
Former BP Station #11132
3201 35th Ave, Oakland, CA

Well No.	Date	P/ NP	Well Elevation/ TOC (feet)	DTW (feet)	Product Thickness (feet)	GWE (feet)	GRO/ TPH-g (µg/L)	Benzene (µg/L)	Toluene (µg/L)	Ethyl-benzene (µg/L)	Total Xylenes (µg/L)	MTBE (µg/L)	DO (mg/L)	Lab	pH	Comments
MW-6	4/29/1997	--	165.4	17.04	--	148.36	<50	<0.5	<1.0	<1.0	<1.0	<10	4.5	--	--	
	8/21/1997	--	165.4	18.58	--	146.82	--	--	--	--	--	--	--	--	--	
	11/5/1997	--	165.4	19.17	--	146.23	70	<0.5	<1.0	<1.0	<1.0	85	4.3	--	--	
	2/3/1998	--	165.4	9.87	--	155.53	--	--	--	--	--	--	--	--	--	
	5/28/1998	--	165.4	13.38	--	152.02	<50	<0.5	<1.0	<1.0	<1.0	<10	3.7	--	--	
	12/30/1998	--	165.4	14.45	--	150.95	--	--	--	--	--	--	--	--	--	
	2/2/1999	--	165.4	18.29	--	147.11	--	--	--	--	--	--	--	--	--	
	5/10/1999	--	165.4	17.49	--	147.91	--	--	--	--	--	--	--	--	--	
	8/24/1999	--	165.4	17.61	--	147.79	--	--	--	--	--	--	--	--	--	
	11/3/1999	--	165.4	16.26	--	149.14	--	--	--	--	--	--	--	--	--	
	3/1/2000	--	165.4	17.43	--	147.97	--	--	--	--	--	--	--	--	--	
	4/21/2000	--	165.4	13.32	--	152.08	--	--	--	--	--	--	--	--	--	
	7/31/2000	--	165.4	13.46	--	151.94	--	--	--	--	--	--	--	--	--	
	11/20/2000	--	165.4	14.78	--	150.62	--	--	--	--	--	--	--	--	--	
	2/18/2001	--	165.4	11.33	--	154.07	--	--	--	--	--	--	--	--	--	
	6/7/2001	--	165.4	16.36	--	149.04	--	--	--	--	--	--	--	--	--	
	9/5/2001	--	165.4	18.61	--	146.79	--	--	--	--	--	--	--	--	--	
	11/30/2001	--	165.4	15.20	--	150.20	--	--	--	--	--	--	--	--	--	
	2/20/2002	--	165.4	12.74	--	152.66	--	--	--	--	--	--	--	--	--	
	6/20/2002	--	165.4	16.68	--	148.72	--	--	--	--	--	--	--	--	--	
	9/11/2002	--	165.4	18.38	--	147.02	--	--	--	--	--	--	--	--	--	
	11/12/2002	--	165.4	18.78	--	146.62	--	--	--	--	--	--	--	--	--	
	1/29/2003	--	165.4	14.45	--	150.95	--	--	--	--	--	--	--	--	--	n
	5/22/2003	--	165.4	14.36	--	151.04	--	--	--	--	--	--	--	--	--	
	7/28/2003	--	165.4	18.43	--	146.97	--	--	--	--	--	--	--	--	--	p
	11/18/2003	--	165.40	17.48	--	147.92	--	--	--	--	--	--	--	--	--	
	02/23/2004	--	165.40	11.54	--	153.86	--	--	--	--	--	--	--	--	--	
	05/04/2004	--	165.40	16.58	--	148.82	--	--	--	--	--	--	--	--	--	
	08/04/2004	--	165.40	18.12	--	147.28	--	--	--	--	--	--	--	--	--	
	11/10/2004	--	165.40	15.75	--	149.65	--	--	--	--	--	--	--	--	--	
	02/15/2005	--	165.40	12.50	--	152.90	--	--	--	--	--	--	--	--	--	
MW-7	7/9/1990	--	167.61		--		--	--	--	--	--	--	--	--	--	
	12/21/1990	--	167.61		--		--	--	--	--	--	--	--	--	--	

Table 1
Groundwater Elevation and Analytical Data
Former BP Station #11132
3201 35th Ave, Oakland, CA

Well No.	Date	P/ NP	Well Elevation/ TOC (feet)	DTW (feet)	Product Thickness (feet)	GWE (feet)	GRO/ TPH-g (µg/L)	Benzene (µg/L)	Toluene (µg/L)	Ethyl-benzene (µg/L)	Total Xylenes (µg/L)	MTBE (µg/L)	DO (mg/L)	Lab	pH	Comments
MW-7	3/7/1991	--	167.61	19.04	--	148.57	--	--	0.4	0.3	2.4	--	--	--	--	
	4/1/1991	--	167.61	15.18	--	152.43	--	--	--	--	--	--	--	--	--	
	6/27/1991	--	167.61		--		70	17	4	0.8	2.2	--	--	--	--	
	9/27/1991	--	167.61		--		--	0.4	--	--	0.4	--	--	--	--	
	12/18/1991	--	167.61		--		--	0.7	2.9	0.8	3.3	--	--	--	--	
	7/3/1992	--	167.61	20.28	--	147.33	<50	<0.5	<0.5	<0.5	<0.5	--	--	--	--	
	10/5/1992	--	167.61	21.56	--	146.05	<50	<0.5	<0.5	<0.5	1.5	--	--	--	--	
	1/13/1993	--	167.61	15.41	--	152.20	<50	<0.5	<0.5	<0.5	<0.5	--	--	--	--	
	4/23/1993	--	167.61	15.84	--	151.77	<50	<0.5	<0.5	<0.5	<0.5	--	--	--	--	i
	7/12/1993	--	167.61	19.84	--	147.77	<50	<0.5	<0.5	<0.5	<0.5	<5.0	--	--	--	i
	10/21/1993	--	167.61	21.61	--	146.00	<50	<0.5	<0.5	<0.5	<0.5	--	--	--	--	i
	1/21/1994	--	167.61	--	--	--	<50	<0.5	<0.5	<0.5	<0.5	--	--	--	--	c
	1/21/1994	--	167.61	20.49	--	147.12	<50	<0.5	<0.5	<0.5	<0.5	<5.0	--	--	--	i
	4/20/1994	--	167.61	20.54	--	147.07	<50	<0.5	<0.5	<0.5	<0.5	<5.0	1.5	--	--	i
	8/1/1994	--	167.61	20.99	--	146.62	<50	0.7	<0.5	<0.5	<0.5	<5.0	1.9	--	--	i
	12/23/1994	--	167.61	15.00	--	152.61	--	--	--	--	--	--	--	--	--	
	1/26/1995	--	167.61	14.69	--	152.92	<50	<0.5	<0.5	<0.5	<1	--	7	--	--	
	6/8/1995	--	167.61	19.87	--	147.74	--	--	--	--	--	--	--	--	--	
	8/22/1995	--	167.61	21.49	--	146.12	<50	<0.50	<0.50	<0.50	<1.0	<5.0	6.4	--	--	d
	10/27/1995	--	167.61	22.53	--	145.08	--	--	--	--	--	--	--	--	--	
	1/25/1996	--	167.61	17.21	--	150.40	<50	<0.50	<0.50	<0.50	<1.0	<5.0	--	--	--	
	4/19/1996	--	167.61	17.09	--	150.52	--	--	--	--	--	--	--	--	--	
	7/23/1996	--	167.61	21.02	--	146.59	--	--	--	--	--	--	--	--	--	
	11/11/1996	--	167.61	22.03	--	145.58	<50	<0.5	<1.0	<1.0	<1.0	<10	7.8	--	--	
	1/21/1997	--	167.61	15.06	--	152.55	--	--	--	--	--	--	--	--	--	
	4/29/1997	--	167.61	20.11	--	147.50	<50	<0.5	<1.0	<1.0	<1.0	<10	4.4	--	--	
	8/21/1997	--	167.61	21.59	--	146.02	--	--	--	--	--	--	--	--	--	
	11/5/1997	--	167.61	20.05	--	147.56	<50	<0.5	<1.0	<1.0	<1.0	<10	4.4	--	--	
	2/3/1998	--	167.61	9.97	--	157.64	--	--	--	--	--	--	--	--	--	
	5/28/1998	--	167.61	13.52	--	154.09	<50	<0.5	<1.0	<1.0	<1.0	<10	4.3	--	--	
	12/30/1998	--	167.61	18.33	--	149.28	--	--	--	--	--	--	--	--	--	
	2/2/1999	--	167.61	12.33	--	149.28	--	--	--	--	--	--	--	--	--	
	5/10/1999	--	167.61	13.52	--	154.09	--	--	--	--	--	--	--	--	--	
	8/24/1999	--	167.61	14.01	--	153.60	--	--	--	--	--	--	--	--	--	

Table 1

Groundwater Elevation and Analytical Data

Former BP Station #11132
3201 35th Ave, Oakland, CA

Well No.	Date	P/ NP	Well Elevation/ TOC (feet)	DTW (feet)	Product Thickness (feet)	GWE (feet)	GRO/ TPH-g (µg/L)	Benzene (µg/L)	Toluene (µg/L)	Ethyl-benzene (µg/L)	Total Xylenes (µg/L)	MTBE (µg/L)	DO (mg/L)	Lab	pH	Comments
MW-7	11/3/1999	--	167.61	19.91	--	147.70	--	--	--	--	--	--	--	--	--	
	3/1/2000	--	167.61	19.89	--	147.72	--	--	--	--	--	--	--	--	--	
	4/21/2000	--	167.61	17.94	--	149.67	--	--	--	--	--	--	--	--	--	
	7/31/2000	--	167.61	17.33	--	150.28	--	--	--	--	--	--	--	--	--	
	11/20/2000	--	167.61	18.41	--	149.20	--	--	--	--	--	--	--	--	--	
	2/18/2001	--	167.61	15.13	--	152.48	--	--	--	--	--	--	--	--	--	
	6/7/2001	--	167.61	18.75	--	148.86	--	--	--	--	--	--	--	--	--	
	9/5/2001	--	167.61	20.48	--	147.13	--	--	--	--	--	--	--	--	--	
	11/30/2001	--	167.61	20.11	--	147.50	--	--	--	--	--	--	--	--	--	
	2/20/2002	--	167.61	18.40	--	149.21	--	--	--	--	--	--	--	--	--	
	6/20/2002	--	167.61	18.62	--	148.99	--	--	--	--	--	--	--	--	--	
	9/11/2002	--	167.61	20.05	--	147.56	--	--	--	--	--	--	--	--	--	
	11/12/2002	--	167.61	21.13	--	146.48	--	--	--	--	--	--	--	--	--	
	1/29/2003	--	167.61	19.10	--	148.51	--	--	--	--	--	--	--	--	--	n
	5/22/2003	--	167.61	18.83	--	148.78	--	--	--	--	--	--	--	--	--	
	7/28/2003	--	167.61	19.88	--	147.73	--	--	--	--	--	--	--	--	--	
	11/18/2003	--	167.61	20.50	--	147.11	--	--	--	--	--	--	--	--	--	p
	11/18/2003	--	168.08	20.50	--	147.58	--	--	--	--	--	--	--	--	--	
	02/23/2004	--	168.08	15.92	--	152.16	--	--	--	--	--	--	--	--	--	
	05/04/2004	--	168.08	18.86	--	149.22	--	--	--	--	--	--	--	--	--	
	08/04/2004	--	168.08	19.10	--	148.98	--	--	--	--	--	--	--	--	--	
	11/10/2004	--	168.08	20.25	--	147.83	--	--	--	--	--	--	--	--	--	
	02/15/2005	--	168.08	16.37	--	151.71	--	--	--	--	--	--	--	--	--	
MW-8	3/7/1991	--	165.74	16.72	--	149.02	2.7	780	450	64	310	--	--	--	--	
	4/1/1991	--	165.74	12.54	--	153.20	15,000	3,600	2,600	410	1,900	--	--	--	--	
	6/27/1991	--	165.74		--		12,000	3,400	1,100	240	750	--	--	--	--	
	9/27/1991	--	165.74		--		41	5,700	5,200	1,100	4,300	--	--	--	--	
	12/18/1991	--	165.74		--		3.2	990	150	120	250	--	--	--	--	
	7/3/1992	--	165.74	18.78	--	146.96	72,000	19,000	32,000	3,000	15,000	--	--	--	--	
	10/5/1992	--	165.74	20.48	0.01	145.25	--	--	--	--	--	--	--	--	--	
	1/13/1993	--	165.74	12.87	0.01	152.86	--	--	--	--	--	--	--	--	--	
	4/23/1993	--	165.74	13.90	--	151.84	--	--	--	--	--	--	--	--	--	t
	7/12/1993	--	165.74	18.30	--	147.44	--	--	--	--	--	--	--	--	--	t

Table 1
Groundwater Elevation and Analytical Data
Former BP Station #11132
3201 35th Ave, Oakland, CA

Well No.	Date	P/ NP	Well Elevation/ TOC (feet)	DTW (feet)	Product Thickness (feet)	GWE (feet)	GRO/ TPH-g (µg/L)	Benzene (µg/L)	Toluene (µg/L)	Ethyl-benzene (µg/L)	Total Xylenes (µg/L)	MTBE (µg/L)	DO (mg/L)	Lab	pH	Comments
MW-8	10/21/1993	--	165.74	21.91	0.95	142.88	--	--	--	--	--	--	--	--	--	
	1/21/1994	--	165.74	19.12	0.03	146.59	--	--	--	--	--	--	--	--	--	
	4/20/1994	--	165.74	19.28	0.03	146.43	26,000	1,700	4,100	960	4,000	632	1.1	--	--	i
	8/1/1994	--	165.74		--		--	--	--	--	--	--	--	--	--	
	12/23/1994	--	165.74	13.81	0.03	151.90	--	--	--	--	--	--	--	--	--	
	1/26/1995	--	165.74		--		--	--	--	--	--	--	--	--	--	
	6/8/1995	--	165.74	17.82	0.29	147.63	--	--	--	--	--	--	--	--	--	
	8/22/1995	--	165.74	19.41	0.20	146.13	--	--	--	--	--	--	--	--	--	
	10/27/1995	--	165.74	20.47	0.14	145.13	--	--	--	--	--	--	--	--	--	
	1/25/1996	--	165.74	13.35	0.22	152.17	--	--	--	--	--	--	--	--	--	
	4/19/1996	--	165.74	14.40	0.20	151.14	--	--	--	--	--	--	--	--	--	
	7/23/1996	--	165.74	18.35	0.14	147.25	--	--	--	--	--	--	--	--	--	
	11/11/1996	--	165.74	19.41	0.02	146.31	--	--	--	--	--	--	--	--	--	
	1/21/1997	--	165.74	12.29	0.01	153.44	--	--	--	--	--	--	--	--	--	
	4/29/1997	--	165.74		--		--	--	--	--	--	--	--	--	--	
	8/21/1997	--	165.74	19.61	--	146.13	240,000	1,100	9,300	4,100	31,100	<1000	5.2	--	--	e
	11/5/1997	--	165.74	19.45	0.10	146.19	57,000	790	2,700	2,300	15,200	<1000	5	--	--	
	2/3/1998	--	165.74	9.33	0.03	156.38	--	--	--	--	--	--	--	--	--	
	2/4/1998	--	165.74		--		94,000	570	1,500	2,100	15,200	<2500	5.5	--	--	
	5/28/1998	--	165.74		--		--	--	--	--	--	--	--	--	--	
	12/30/1998	--	165.74	15.48	0.05	150.21	120,000	460	2,300	2,200	15,000	150	--	--	--	e
	2/2/1999	--	165.74	18.29	--	147.45	82,000	450	2,200	3,700	26,000	<500	--	--	--	
	5/10/1999	--	165.74	15.62	--	150.12	28,000	740	1,800	1,100	5,800	<25	--	--	--	
	8/24/1999	--	165.74	18.41	--	147.33	75,000	530	1,400	3,300	21,000	150	--	--	--	
	11/3/1999	--	165.74	18.71	--	147.03	70,000	600	1,300	3,600	20,500	750	--	--	--	
	3/1/2000	--	165.74	19.37	--	146.37	27,000	1,600	1,200	2,600	6,600	120	--	--	--	
	4/21/2000	--	165.74		--		--	--	--	--	--	--	--	--	--	e
	7/31/2000	--	165.74		--		--	--	--	--	--	--	--	--	--	e
	11/20/2000	--	165.74	17.42	--	148.32	1,300,000	1,400	1,700	20,000	16,000	5,700	--	--	--	
	2/18/2001	--	165.74		--		--	--	--	--	--	--	--	--	--	e
	6/7/2001	--	165.74		--		--	--	--	--	--	--	--	--	--	e
	9/5/2001	--	165.74	21.45	0.04	144.25	--	--	--	--	--	--	--	--	--	j
	11/30/2001	--	165.74	18.31	--	147.43	--	--	--	--	--	--	--	--	--	h
	12/6/2001	--	165.74		--		--	--	--	--	--	--	--	--	--	e

Table 1

Groundwater Elevation and Analytical Data

Former BP Station #11132
3201 35th Ave, Oakland, CA

Well No.	Date	P/ NP	Well Elevation/ TOC (feet)	DTW (feet)	Product Thickness (feet)	GWE (feet)	GRO/ TPH-g (µg/L)	Benzene (µg/L)	Toluene (µg/L)	Ethyl-benzene (µg/L)	Total Xylenes (µg/L)	MTBE (µg/L)	DO (mg/L)	Lab	pH	Comments
MW-8	2/20/2002	--	165.74	14.02	--	151.72	20,000	163	114	403	3,810	80.4	--	--	--	
	6/20/2002	--	165.74	17.56	--	148.18	28,000	466	141	962	5,850	2,520	--	--	--	
	9/11/2002	--	165.74	19.45	--	146.29	190,000	1,500	670	4,500	23,000	1,200	--	--	--	
	11/12/2002	--	165.74	19.15	--	146.59	420	6.4	2.9	16	110	31	--	--	--	t
	1/29/2003	--	165.74	15.02	--	150.72	200,000	810	<500	2,000	11,000	<500	--	--	--	n
	5/22/2003	--	165.74	15.07	--	150.67	--	--	--	--	--	--	--	--	--	t
	6/24/2003	--	165.74	17.95	--	147.79	43,000	860	300	2,100	9,600	46	--	--	--	
	7/28/2003	--	165.74	19.45	--	146.29	62,000	690	230	1,800	15,000	2,100	--	--	--	
	8/12/2003	--	165.74	19.40	--	146.34	--	--	--	--	--	--	--	--	--	
	9/12/2003	--	165.74	19.34	--	146.40	--	--	--	--	--	--	--	--	--	o,t
	11/18/2003	P	165.74	18.80	--	146.94	8,800	500	37	530	930	1,700	--	SEQM	--	o,p
	02/23/2004	P	165.74	12.82	--	152.92	32,000	840	360	1,000	7,100	110	--	SEQM	6.6	t
	05/04/2004	P	165.74	18.87	--	146.87	42,000	570	230	1,700	8,400	2,000	--	SEQM	7.0	t
	08/04/2004	--	165.74	19.37	0.05	146.41	--	--	--	--	--	--	--	--	--	
	09/22/2004	NP	165.74	19.60	--	146.14	--	--	--	--	--	--	--	--	--	
	11/10/2004	P	165.74	16.58	--	149.16	11,000	790	61	1,000	830	74	--	SEQM	7.3	t
	02/15/2005	P	165.74	12.85	--	152.89	38,000	1,300	390	2,300	7,900	<50	--	SEQM	7.2	
MW-9	3/7/1991	--	166.2	16.79	--	149.41	7.1	220	4	2.4	2,400	--	--	--	--	
	4/1/1991	--	166.2	12.89	--	153.31	12,000	2,000	2,600	360	1,600	--	--	--	--	
	6/27/1991	--	166.2		--		3,600	520	400	85	310	--	--	--	--	
	9/27/1991	--	166.2		--		3.2	720	150	50	180	--	--	--	--	
	12/18/1991	--	166.2		--		--	2.5	1.1	0.3	5.8	--	--	--	--	
	7/3/1992	--	166.2	18.89	--	147.31	5,700	17,000	840	230	800	--	--	--	--	
	10/5/1992	--	166.2	20.52	--	145.68	1,400	440	17	14	100	--	--	--	--	
	1/13/1993	--	166.2	--	--	--	11,000	1,200	1,600	330	1,300	--	--	--	--	c,i
	1/13/1993	--	166.2	12.92	--	153.28	11,000	1,200	1,700	340	1,400	--	--	--	--	i
	4/23/1993	--	166.2	14.08	--	152.12	24,000	2,800	4,500	730	3,400	--	--	--	--	i
	7/12/1993	--	166.2	--	--	--	10,000	1,200	900	310	1,200	--	--	--	--	c
	7/12/1993	--	166.2	18.44	--	147.76	13,000	1,400	1,100	360	1,400	20.8	--	--	--	i
	10/21/1993	--	166.2	21.81	0.89	143.50	--	--	--	--	--	--	--	--	--	
	1/21/1994	--	166.2	19.28	--	146.92	--	--	--	--	--	--	--	--	--	
	4/20/1994	--	166.2	--	--	--	45,000	2,700	6,800	1,200	8,200	740	--	--	--	c,d
	4/20/1994	--	166.2	19.72	--	146.48	43,000	2,800	6,800	1,300	7,900	768	1.7	--	--	i

Table 1
Groundwater Elevation and Analytical Data
Former BP Station #11132
3201 35th Ave, Oakland, CA

Well No.	Date	P/ NP	Well Elevation/ TOC (feet)	DTW (feet)	Product Thickness (feet)	GWE (feet)	GRO/ TPH-g (µg/L)	Benzene (µg/L)	Toluene (µg/L)	Ethyl-benzene (µg/L)	Total Xylenes (µg/L)	MTBE (µg/L)	DO (mg/L)	Lab	pH	Comments
MW-9	8/1/1994	--	166.2	20.18	0.05	145.97	--	--	--	--	--	--	--	--	--	
	12/23/1994	--	166.2	14.22	0.02	151.96	--	--	--	--	--	--	--	--	--	
	1/26/1995	--	166.2	11.85	0.13	154.22	--	--	--	--	--	--	--	--	--	
	6/8/1995	--	166.2	18.33	--	147.87	--	--	--	--	--	--	--	--	--	
	8/22/1995	--	166.2	19.95	0.01	146.24	--	--	--	--	--	--	--	--	--	
	10/27/1995	--	166.2	20.88	0.01	145.31	--	--	--	--	--	--	--	--	--	
	1/25/1996	--	166.2	13.84	0.07	152.29	--	--	--	--	--	--	--	--	--	
	4/19/1996	--	166.2		--		--	--	--	--	--	--	--	--	--	
	7/23/1996	--	166.2	18.84	0.03	147.33	--	--	--	--	--	--	--	--	--	e
	11/11/1996	--	166.2	19.91	0.01	146.28	--	--	--	--	--	--	--	--	--	
	1/21/1997	--	166.2	12.93	0.01	153.26	--	--	--	--	--	--	--	--	--	
	4/29/1997	--	166.2	18.03	--	148.17	--	--	--	--	--	--	--	--	--	t
	4/30/1997	--	166.2		--		78,000	1,900	3,600	3,100	20,600	<5000	5.5	--	--	
	8/21/1997	--	166.2	19.56	0.01	146.63	110,000	2,100	3,400	2,300	18,800	<500	5.1	--	--	
	11/5/1997	--	166.2	20.59	0.01	145.60	59,000	1,400	1,700	2,200	17,000	<500	4.5	--	--	
	2/3/1998	--	166.2	10.56	--	155.64	55,000	490	1,200	1,400	10,200	<1000	4.9	--	--	
	5/28/1998	--	166.2	--	--	--	53,000	290	830	1,400	10,500	<500	--	--	--	c
	5/28/1998	--	166.2	14.21	0.01	151.98	41,000	250	1,200	1,500	11,400	<250	3.8	--	--	
	12/30/1998	--	166.2	15.61	--	150.59	83,000	860	1,300	2,400	21,000	180	--	--	--	
	2/2/1999	--	166.2	12.33	--	153.87	75,000	530	960	1,900	17,000	<50	--	--	--	
	5/10/1999	--	166.2	15.67	--	150.53	22,000	600	1,500	1,100	4,400	72	--	--	--	
	8/24/1999	--	166.2	19.10	--	147.10	85,000	850	1,300	1,700	20,000	<250	--	--	--	
	11/3/1999	--	166.2	19.58	--	146.62	72,000	700	780	1,900	19,000	<5.0	--	--	--	
	3/1/2000	--	166.2	13.19	--	153.01	34,000	78	490	1,100	8,200	63	--	--	--	
	4/21/2000	--	166.2	14.29	--	151.91	55,000	260	920	1,500	16,000	<5.0	--	--	--	
	7/31/2000	--	166.2	15.01	--	151.19	1,200,000	1,500	6,300	15,000	120,000	1,600	--	--	--	
	11/20/2000	--	166.2	18.23	--	147.97	320,000	3,500	19,000	5,000	40,000	3,900	--	--	--	
	2/18/2001	--	166.2	13.14	--	153.06	32,000	290	417	1,180	10,400	121	--	--	--	
	6/7/2001	--	166.2	17.41	--	148.79	96,000	421	704	2,330	17,300	223	--	--	--	
	9/5/2001	--	166.2	20.56	--	145.64	39,000	445	323	1,240	8,940	310	--	--	--	
	11/30/2001	--	166.2	17.42	--	148.78	60,000	310	586	1,890	14,200	285	--	--	--	
	2/20/2002	--	166.2	13.87	--	152.33	14,000	64	122	897	2,650	293	--	--	--	
	6/20/2002	--	166.2	18.22	--	147.98	29,000	307	168	1,100	5,670	208	--	--	--	
	9/11/2002	--	166.2	20.27	--	145.93	230,000	1,400	680	3,600	23,000	<2500	--	--	--	

Table 1

Groundwater Elevation and Analytical Data

Former BP Station #11132
3201 35th Ave, Oakland, CA

Well No.	Date	P/ NP	Well Elevation/ TOC (feet)	DTW (feet)	Product Thickness (feet)	GWE (feet)	GRO/ TPH-g (µg/L)	Benzene (µg/L)	Toluene (µg/L)	Ethyl-benzene (µg/L)	Total Xylenes (µg/L)	MTBE (µg/L)	DO (mg/L)	Lab	pH	Comments
MW-9	11/12/2002	--	166.2	19.40	--	146.80	840	5.8	3.6	28	160	21	--	--	--	t
	1/29/2003	--	166.2	14.30	0.10	151.80	--	--	--	--	--	--	--	--	--	j,n
	5/22/2003	--	166.2	15.16	--	151.04	23,000	260	<50	1,000	2,900	<50	--	--	--	t
	6/24/2003	--	166.2		--								--	--	--	e
	7/28/2003	--	166.2	19.55	--	146.65	1,500,000	<500	<500	9,800	79,000	<500	--	--	--	
	8/12/2003	--	166.2	19.60	--	146.60	--	--	--	--	--	--	--	--	--	o,t
	9/12/2003	--	166.2	19.60	--	146.60	--	--	--	--	--	--	--	--	--	o,t
	11/18/2003	P	166.20	18.98	--	147.22	19,000	250	18	690	2,400	45	--	SEQM	6.8	o,p
	02/23/2004	P	166.20	13.91	--	152.29	91,000	<250	440	2,200	13,000	<250	--	SEQM	6.8	t
	05/04/2004	P	166.20	18.11	--	148.09	39,000	230	44	1,100	4,200	<25	--	SEQM	6.9	t
	08/04/2004	--	166.20	18.90	0.03	147.32	--	--	--	--	--	--	--	--	--	
	09/22/2004	NP	166.20	19.69	--	146.51	--	--	--	--	--	--	--	--	--	
	11/10/2004	NP	166.20	16.95	--	149.25	31,000	300	<50	1,100	3,800	<50	--	SEQM	7.3	t
	02/15/2005	P	166.20	12.95	--	153.25	19,000	200	<50	720	2,000	<50	--	SEQM	7.3	t
MW-10	3/7/1991	--	167.01	18.09	--	148.92	1.6	120	190	32	230	--	--	--	--	
	4/1/1991	--	167.01	13.92	--	153.09	--	--	--	--	--	--	--	--	--	
	6/27/1991	--	167.01		--		12,000	7,300	500	150	300	--	--	--	--	
	9/27/1991	--	167.01		--		57	12,000	7,200	1,400	4,600	--	--	--	--	
	12/18/1991	--	167.01		--		5.3	2,500	120	36	79	--	--	--	--	
	7/3/1992	--	167.01	19.92	--	147.09	8,600	5,100	1,300	180	690	--	--	--	--	
	10/5/1992	--	167.01	21.92	0.19	144.90	--	--	--	--	--	--	--	--	--	
	1/13/1993	--	167.01	14.43	0.03	152.55	--	--	--	--	--	--	--	--	--	
	4/23/1993	--	167.01	15.26	0.06	151.69	--	--	--	--	--	--	--	--	--	
	7/12/1993	--	167.01	19.78	0.45	146.78	--	--	--	--	--	--	--	--	--	
	10/21/1993	--	167.01	22.90	0.69	143.42	--	--	--	--	--	--	--	--	--	
	1/21/1994	--	167.01	20.25	0.06	146.70	--	--	--	--	--	--	--	--	--	
	4/20/1994	--	167.01	20.74	--	146.27	100,000	12,000	24,000	2,400	14,000	1,577	1	--	--	d,i
	8/1/1994	--	167.01	22.00	0.28	144.73	--	--	--	--	--	--	--	--	--	
	12/23/1994	--	167.01	16.08	0.25	150.68	--	--	--	--	--	--	--	--	--	
	1/26/1995	--	167.01	13.68	0.80	152.53	--	--	--	--	--	--	--	--	--	
	6/8/1995	--	167.01	19.08	--	147.93	--	--	--	--	--	--	--	--	--	
	8/22/1995	--	167.01	20.73	0.70	145.58	--	--	--	--	--	--	--	--	--	
	10/27/1995	--	167.01	21.69	0.63	144.69	--	--	--	--	--	--	--	--	--	

Table 1
Groundwater Elevation and Analytical Data
Former BP Station #11132
3201 35th Ave, Oakland, CA

Well No.	Date	P/ NP	Well Elevation/ TOC (feet)	DTW (feet)	Product Thickness (feet)	GWE (feet)	GRO/ TPH-g (µg/L)	Benzene (µg/L)	Toluene (µg/L)	Ethyl-benzene (µg/L)	Total Xylenes (µg/L)	MTBE (µg/L)	DO (mg/L)	Lab	pH	Comments
MW-10	1/25/1996	--	167.01	15.05	0.81	151.15	--	--	--	--	--	--	--	--	--	--
	4/19/1996	--	167.01	16.26	0.58	150.17	--	--	--	--	--	--	--	--	--	--
	7/23/1996	--	167.01	20.18	0.62	146.21	--	--	--	--	--	--	--	--	--	--
	11/11/1996	--	167.01	21.20	0.20	145.61	--	--	--	--	--	--	--	--	--	--
	1/21/1997	--	167.01	13.66	0.14	153.21	--	--	--	--	--	--	--	--	--	--
	4/29/1997	--	167.01	18.71	0.21	148.09	--	--	--	--	--	--	--	--	--	--
	4/30/1997	--	167.01		--		170,000	9,700	38,000	4,700	30,500	<5000	5.6	--	--	
	8/21/1997	--	167.01	20.19	0.14	146.68	170,000	9,500	35,000	4,300	27,100	<5000	5.3	--	--	
	11/5/1997	--	167.01	20.52	0.02	146.47	80,000	3,800	12,000	2,700	15,700	<500	4.4	--	--	
	2/3/1998	--	167.01	10.62	0.01	156.38	--	--	--	--	--	--	--	--	--	
	2/4/1998	--	167.01	--	--	--	72,000	500	1,300	1,700	12,000	<1000	5.1	--	--	
	5/28/1998	--	167.01	15.46	--	151.55	220,000	3,200	24,000	5,200	43,000	<1000	4.8	--	--	
	12/30/1998	--	167.01	16.65	--	150.36	110,000	3,500	14,000	5,800	50,000	<50	--	--	--	
	2/2/1999	--	167.01	14.58	--	152.43	74,000	1,000	2,800	1,000	26,000	860	--	--	--	
	5/10/1999	--	167.01	15.72	--	151.29	81,000	2,800	2,800	3,000	17,000	220	--	--	--	
	8/24/1999	--	167.01	19.85	--	147.16	54,000	3,500	3,800	1,500	9,100	<250	--	--	--	
	11/3/1999	--	167.01	20.00	--	147.01	30,000	3,000	3,500	1,200	5,000	31	--	--	--	
	3/1/2000	--	167.01	14.62	--	152.39	62,000	320	1,200	1,100	26,000	4,400	--	--	--	
	4/21/2000	--	167.01	15.46	--	151.55	88,000	2,700	7,400	3,700	35,000	2,400	--	--	--	
	7/31/2000	--	167.01		--		--	--	--	--	--	--	--	--	--	e
	11/20/2000	--	167.01	18.74	--	148.27	78,000	3,800	5,500	2,800	13,000	450	--	--	--	
	2/18/2001	--	167.01	14.10	--	152.91	39,000	1,050	1,160	1,550	14,700	4,180	--	--	--	
	6/7/2001	--	167.01	18.78	--	148.23	76,000	2,460	2,840	3,330	20,700	635	--	--	--	
	9/5/2001	--	167.01	21.40	0.01	145.60	25,000	2,510	2,070	1,090	4,540	189	--	--	--	
	11/30/2001	--	167.01	18.50	--	148.51	100,000	2,480	5,720	3,890	22,800	325	--	--	--	
	2/20/2002	--	167.01	14.39	--	152.62	49,000	2,170	3,070	1,960	12,300	1,090	--	--	--	
	6/20/2002	--	167.01	18.80	--	148.21	44,000	2,040	3,050	1,690	8,430	224	--	--	--	
	9/11/2002	--	167.01	20.52	--	146.49	28,000	1,200	2,700	1,400	6,800	<250	--	--	--	
	11/12/2002	--	167.01	20.37	0.07	146.57	--	--	--	--	--	--	--	--	--	j
	1/29/2003	--	167.01	16.33	0.03	150.65	--	--	--	--	--	--	--	--	--	j,n
	5/22/2003	--	167.01	16.32	--	150.69	13,000	2,100	850	630	1,600	300	--	--	--	t
	6/24/2003	--	167.01	18.73	0.04	148.24	--	--	--	--	--	--	--	--	--	o
	7/28/2003	--	167.01	20.39	0.04	146.58	--	--	--	--	--	--	--	--	--	j
	8/12/2003	--	167.01	20.43	--	146.58	--	--	--	--	--	--	--	--	--	o,t

Table 1

Groundwater Elevation and Analytical Data

Former BP Station #11132
3201 35th Ave, Oakland, CA

Well No.	Date	P/ NP	Well Elevation/ TOC (feet)	DTW (feet)	Product Thickness (feet)	GWE (feet)	GRO/ TPH-g (µg/L)	Benzene (µg/L)	Toluene (µg/L)	Ethyl-benzene (µg/L)	Total Xylenes (µg/L)	MTBE (µg/L)	DO (mg/L)	Lab	pH	Comments
MW-10	9/12/2003	--	167.01	20.41	--	146.60	--	--	--	--	--	--	--	--	--	o
	11/18/2003	P	167.01	19.55	--	147.46	9,900	2,200	530	320	860	<50	--	SEQM	6.8	o,p
	02/23/2004	P	167.01	15.45	--	151.56	46,000	1,900	2,000	1,800	9,000	180	--	SEQM	6.7	t
	05/04/2004	P	167.01	18.81	--	148.20	35,000	3,100	3,600	1,400	5,600	<25	--	SEQM	7.1	t
	08/04/2004	--	167.01	18.90	0.08	148.17	--	--	--	--	--	--	--	--	--	
	09/22/2004	NP	167.01	20.60	--	146.41	--	--	--	--	--	--	--	--	--	
	11/10/2004	P	167.01	17.95	--	149.06	9,800	470	91	450	1,700	230	--	SEQM	7.3	t
	01/13/2005	--	167.01	12.21	0.01	154.81	--	--	--	--	--	--	--	--	--	
	02/15/2005	P	167.01	14.19	--	152.82	30,000	510	330	1,800	7,200	77	--	SEQM	7.2	
QC-2	10/5/1992	--	168.01	--	--	--	<50	<0.5	<0.5	<0.5	<0.5	--	--	--	--	f
	1/13/1993	--	168.01	--	--	--	<50	<0.5	<0.5	<0.5	<0.5	--	--	--	--	f,i
	4/23/1993	--	168.01	--	--	--	<50	<0.5	<0.5	<0.5	<0.5	--	--	--	--	f,i
	7/12/1993	--	168.01	--	--	--	<50	<0.5	<0.5	<0.5	<0.5	--	--	--	--	f
	10/21/1993	--	168.01	--	--	--	<50	<0.5	<0.5	<0.5	<0.5	--	--	--	--	f
	1/21/1994	--	168.01	--	--	--	<50	<0.5	2.1	<0.5	2.1	--	--	--	--	f
	4/20/1994	--	168.01	--	--	--	<50	<0.5	<0.5	<0.5	<0.5	--	--	--	--	f
	12/23/1994	--	168.01	--	--	--	<50	<0.5	<0.5	<0.5	<0.5	--	--	--	--	f
	1/26/1995	--	168.01	--	--	--	<50	<0.5	<0.5	<0.5	<1	--	--	--	--	f
	6/8/1995	--	168.01	--	--	--	<50	<0.50	<0.50	<0.50	<1.0	--	--	--	--	f
	8/22/1995	--	168.01	--	--	--	<50	<0.50	<0.50	<0.50	<1.0	<5.0	--	--	--	d,f
	10/30/1995	--	168.01	--	--	--	<50	<0.50	<0.50	<0.50	<1.0	<5.0	--	--	--	f
	1/25/1996	--	168.01	--	--	--	<50	<0.50	<0.50	<0.50	<1.0	<5.0	--	--	--	f
	4/19/1996	--	168.01	--	--	--	<50	<0.5	<1	<1	<1	<10	--	--	--	f
RW-1	7/9/1990	--	168.01		1.21		--	--	--	--	--	--	--	--	--	
	12/21/1990	--	168.01		0.01		--	--	--	--	--	--	--	--	--	
	3/7/1991	--	168.01	17.62	--	150.39	--	--	--	--	--	--	--	--	--	t
	4/1/1991	--	168.01	14.40	0.11	153.50	--	--	--	--	--	--	--	--	--	
	6/27/1991	--	168.01		0.04		--	--	--	--	--	--	--	--	--	
	9/27/1991	--	168.01		0.02		--	--	--	--	--	--	--	--	--	
	12/18/1991	--	168.01		0.02		--	--	--	--	--	--	--	--	--	
	7/3/1992	--	168.01	20.66	--	147.35	--	--	--	--	--	--	--	--	--	t
	10/5/1992	--	168.01	23.34	0.08	144.59	--	--	--	--	--	--	--	--	--	
	1/13/1993	--	168.01	16.59	0.05	151.37	--	--	--	--	--	--	--	--	--	

Table 1
Groundwater Elevation and Analytical Data
Former BP Station #11132
3201 35th Ave, Oakland, CA

Well No.	Date	P/ NP	Well Elevation/ TOC (feet)	DTW (feet)	Product Thickness (feet)	GWE (feet)	GRO/ TPH-g (µg/L)	Benzene (µg/L)	Toluene (µg/L)	Ethyl-benzene (µg/L)	Total Xylenes (µg/L)	MTBE (µg/L)	DO (mg/L)	Lab	pH	Comments
RW-1	4/23/1993	--	168.01	16.17	0.18	151.66	--	--	--	--	--	--	--	--	--	
	7/12/1993	--	168.01	20.18	0.06	147.77	--	--	--	--	--	--	--	--	--	
	10/21/1993	--	168.01	25.70	0.56	141.75	--	--	--	--	--	--	--	--	--	
	1/21/1994	--	168.01	21.24	0.40	146.37	--	--	--	--	--	--	--	--	--	
	4/20/1994	--	168.01	32.20	--	135.81	--	--	--	--	--	--	--	--	--	
	8/1/1994	--	168.01	21.70	--	146.31	29,000	580	950	300	7,800	1,200	1.1	--	--	d
	12/23/1994	--	168.01	16.02	--	151.99	1,300	25	8.6	1.4	69	616	1.8	--	--	i
	1/26/1995	--	168.01	--	--	--	<50	<0.5	<0.5	<0.5	<1	--	--	--	--	c
	1/26/1995	--	168.01	13.78	--	154.23	<50	<0.5	<0.5	<0.5	<1	--	--	--	--	
	6/8/1995	--	168.01	20.05	--	147.96	1,300	130	<1.0	<1.0	36	--	--	--	--	
	8/22/1995	--	168.01	--	--	--	2,800	210	9.3	4.3	250	<25	--	--	--	c
	8/22/1995	--	168.01	21.74	--	146.27	3,300	230	13	4.9	280	<25	6.6	--	--	d
	10/27/1995	--	168.01	32.00	--	136.01	--	--	--	--	--	--	--	--	--	
	10/30/1995	--	168.01	--	--	--	240	1.6	<1.0	<1.0	<2.0	630	--	--	--	c
	10/30/1995	--	168.01	--	--	--	230	1.4	<1.0	<1.0	<2.0	650	6.9	--	--	
	1/25/1996	--	168.01	15.41	--	152.60	15,000	3,400	930	330	2,500	5,300	--	--	--	
	4/19/1996	--	168.01	--	--	--	33,000	5,600	3,200	1,700	8,800	15,000	--	--	--	c
	4/19/1996	--	168.01	16.83	--	151.18	35,000	5,500	3,300	1,700	9,400	14,000	7.6	--	--	
	7/23/1996	--	168.01	--	--	--	47,000	3,700	2,500	930	5,300	35,000	--	--	--	c
	7/23/1996	--	168.01	20.76	--	147.25	46,000	3,600	2,300	900	5,100	36,000	7.4	--	--	
	11/11/1996	--	168.01	--	--	--	31,000	2,900	1,000	860	4,600	22,000	--	--	--	c
	11/11/1996	--	168.01	21.73	--	146.28	34,000	3,000	1,200	880	4,600	22,000	8.3	--	--	
	1/21/1997	--	168.01	--	--	--	270	42	17	2.7	36	1,500	--	--	--	c
	1/21/1997	--	168.01	14.20	--	153.81	260	40	16	2.7	34	1,500	6.1	--	--	
	4/29/1997	--	168.01	19.15	--	148.86	32,000	3,100	590	1,300	6,000	46,000	5.3	--	--	
	8/21/1997	--	168.01	20.67	--	147.34	7,600	730	58	370	1,780	9,500	4.7	--	--	
	11/5/1997	--	168.01	21.01	--	147.00	39,000	2,300	86	1,300	3,840	56,000	4.5	--	--	
	2/3/1998	--	168.01	10.68	--	157.33	3,400	31	11	29	161	3,200	5.1	--	--	
	5/28/1998	--	168.01	15.55	--	152.46	2,000	90	15	60	305	2,700	4.3	--	--	
	12/30/1998	--	168.01	17.35	--	150.66	--	--	--	--	--	--	--	--	--	
	2/2/1999	--	168.01	14.58	--	153.43	82,000	2,300	120	2,000	3,200	51000/78000	--	--	--	g
	5/10/1999	--	168.01	16.00	--	152.01	15,000	620	88	340	660	61,000	--	--	--	
	8/24/1999	--	168.01	20.00	--	148.01	52,000	1,400	170	2,200	2,900	37,000	--	--	--	
	11/3/1999	--	168.01	20.39	--	147.62	17,000	2,500	86	1,500	970	54,000	--	--	--	

Table 1
Groundwater Elevation and Analytical Data
Former BP Station #11132
3201 35th Ave, Oakland, CA

Well No.	Date	P/ NP	Well Elevation/ TOC (feet)	DTW (feet)	Product Thickness (feet)	GWE (feet)	GRO/ TPH-g (µg/L)	Benzene (µg/L)	Toluene (µg/L)	Ethyl-benzene (µg/L)	Total Xylenes (µg/L)	MTBE (µg/L)	DO (mg/L)	Lab	pH	Comments
RW-1	3/1/2000	--	168.01	12.97	--	155.04	17,000	30	78	790	1,100	13,000	--	--	--	
	4/21/2000	--	168.01	16.02	--	151.99	31,000	2,100	100	1,400	1,100	39,000	--	--	--	
	7/31/2000	--	168.01	21.89	--	146.12	47,000	1,300	170	2,700	2,300	30,000	--	--	--	
	11/20/2000	--	168.01	19.15	--	148.86	--	--	--	--	--	--	--	--	--	h
	2/18/2001	--	168.01	15.35	--	152.66	14,000	589	89	600	712	13,000	--	--	--	
	6/7/2001	--	168.01	19.09	--	148.92	28,000	1,140	68.2	504	530	19,100	--	--	--	
	9/5/2001	--	168.01	22.06	0.02	145.93	--	--	--	--	--	--	--	--	--	j
	11/30/2001	--	168.01	19.53	--	148.48	20,000	405	39.4	545	740	8,260	--	--	--	
	2/20/2002	--	168.01	15.99	--	152.02	13,000	469	29	434	655	7,240	--	--	--	
	6/20/2002	--	168.01	19.31	--	--	--	--	--	--	--	--	--	--	--	j,l
	9/11/2002	--	168.01	21.07	0.03	146.91	--	--	--	--	--	--	--	--	--	j
	11/12/2002	--	168.01	20.92	0.02	147.07	--	--	--	--	--	--	--	--	--	j
	1/29/2003	--	168.01	16.31	0.04	151.66	--	--	--	--	--	--	--	--	--	j,n
	5/22/2003	--	168.01	16.68	--	151.33	--	--	--	--	--	--	--	--	--	j,t
	6/24/2003	--	168.01	19.76	0.07	148.18	--	--	--	--	--	--	--	--	--	o
	7/28/2003	--	168.01	21.04	0.04	146.93	--	--	--	--	--	--	--	--	--	j
	8/12/2003	--	168.01	21.41	--	146.60	--	--	--	--	--	--	--	--	--	o,t
	9/12/2003	--	168.01	21.10	0.07	146.84	--	--	--	--	--	--	--	--	--	o
	11/18/2003	P	168.01	20.10	--	147.91	12,000	770	<50	320	250	6,100	--	SEQM	6.6	o,p
	02/23/2004	--	168.01	14.35	0.01	153.67	--	--	--	--	--	--	--	--	--	
	05/04/2004	--	168.01	19.58	0.02	148.45	--	--	--	--	--	--	--	--	--	
	08/04/2004	--	168.01	22.05	0.05	146.00	--	--	--	--	--	--	--	--	--	
	09/22/2004	NP	168.01	21.28	0.06	146.78	--	--	--	--	--	--	--	--	--	
	11/10/2004	--	168.01	18.56	0.02	149.47	--	--	--	--	--	--	--	--	--	
	01/13/2005	--	168.01	12.51	0.01	155.51	--	--	--	--	--	--	--	--	--	
	02/15/2005	--	168.01	15.24	0.03	152.79	--	--	--	--	--	--	--	--	--	
	03/07/2005	--	168.01	11.90	0.02	156.13	--	--	--	--	--	--	--	--	--	

Table 1

Groundwater Elevation and Analytical Data

Former BP Station #11132
3201 35th Ave, Oakland, CA

SYMBOLS AND ABBREVIATIONS:

-- = Not analyzed/applicable/measured/available
< = Not detected at or above laboratory reporting limit
DO = Dissolved oxygen
DTW = Depth to water in feet below ground surface
ft bgs = feet below ground surface
ft MSL = feet above mean sea level
GRO = Gasoline Range Organics, range C4-C12
GWE = Groundwater elevation measured in feet above mean sea level
mg/L = Milligrams per liter
MTBE = Methyl tert butyl ether
NP = Not Purged
P = Purge
TOC = Top of casing measured in feet above mean sea level
TPH-g = Total petroleum hydrocarbons as gasoline
ug/L = Micrograms per liter
SEQ/SEQM= Sequoia Analytical/Sequoia Morgan Hill Laboratories

FOOTNOTES:

a = Casing elevations surveyed to the nearest 0.01 foot relative to mean sea level.
b = Groundwater elevations adjusted assuming a specific gravity of 0.75 for free product.
c = Blind duplicate.
d = A copy of the documentation for this data is included in Appendix C of Alisto report 10-024-10-001.
e = Well inaccessible.
f = Travel blank.
g = EPA Methods 8020/8260 used.
h = Unable to sample.
i = A copy of the documentation for this data can be found in Blaine Tech Services report 010607-M-3. MTBE data for the January 13, 1993 and April 23, 1993 sampling events has been destroyed. No chromatograms could be located for MTBE data from wells MW-5, MW-6, and MW-7, sampled on October 21, 1993.
j = Well not sampled due to presence of SPH and nature of the product.
k = Could not purge and sample; Waste drum full.
l = Value represents the depth to product. Unable to determine depth to water, product disabled the interface probe.
m = Discrete Peak @ C6-7
n = TPH-g BTEX and MTBE analyzed by EPA method 8260 B beginning on 1st Quarter 2003 Sampling event (1/29/03)
o = Groundwater samples are not collected during free product bailing event.
p = Well not included in the monthly free product bailing program.
q = Well not sampled in November 2003 due to the presence of a pile of gravel dumped over the well box.
r = This sample was analyzed beyond the EPA recommended holding time. The results may still be useful for their intended purpose.
s = MW-7 top of casing elevation raised +0.47 ft during well repair, January 20, 2004
t = Sheen

NOTES:

Beginning in the fourth quarter 2003, the laboratory modified the reported analyte list. Total petroleum hydrocarbons as gasoline (TPHg) has been changed to gasoline range organics (GRO). The resulting data may be impacted by the potential of non-TPHg analytes within the requested fuel range resulting in a higher concentration being reported.

Beginning in the second quarter 2004, the carbon range for GRO was changed from C6-C10 to C4-C12

Table 1

Groundwater Elevation and Analytical Data

Former BP Station #11132
3201 35th Ave, Oakland, CA

Values for dissolved oxygen (DO) and pH were obtained through field measurements.

Source : The data within this table collected prior to August 2002 was provided to URS by RM and their previous consultants. URS has not verified the accuracy of this information.

Table 2

Fuel Additives Analytical Data

Former BP Station #11132
3201 35th Ave, Oakland, CA

Well Number	Date Sampled	Ethanol (µg/L)	TBA (µg/L)	MTBE (µg/L)	DIPE (µg/L)	ETBE (µg/L)	TAME (µg/L)	1,2-DCA (µg/L)	EDB (µg/L)	Footnotes/ Comments
MW-1	1/29/2003	--	--	--	--	--	--	--	--	
	5/22/2003	--	--	--	--	--	--	--	--	
	7/28/2003	--	--	--	--	--	--	--	--	
MW-2	1/29/2003	<4000	<2000	820	<50	<50	<50	<50	<50	
	5/22/2003	<10000	<2000	1,000	<50	<50	<50	--	--	
	7/28/2003	<20000	<4000	1,700	<100	<100	<100	<100	<100	
	11/18/2003	<5,000	<1,000	500	<25	<25	<25	--	--	a
	02/23/2004	<25,000	<5,000	790	<120	<120	<120	<120	<120	
	05/04/2004	<50,000	<10,000	780	<250	<250	<250	<250	<250	
	08/04/2004	<50,000	<10,000	430	<250	<250	<250	<250	<250	
	11/10/2004	<5,000	<1,000	310	<25	<25	<25	<25	<25	
02/15/2005	<20,000	<4,000	690	<100	<100	<100	<100	<100		
MW-3	1/29/2003	<40	<20	0.76	<50	<50	<50	<50	<50	
	5/22/2003	--	--	--	--	--	--	--	--	
	7/28/2003	--	--	--	--	--	--	--	--	
	02/23/2004	<100	<20	<0.50	<0.50	<0.50	<0.50	<0.50	<0.50	
	02/15/2005	<100	<20	1.7	<0.50	<0.50	<0.50	<0.50	<0.50	
MW-4	1/29/2003	<40	<20	66	<0.50	<0.50	<0.50	<0.50	<0.50	
	5/22/2003	--	--	--	--	--	--	--	--	
	7/28/2003	--	--	--	--	--	--	--	--	
	02/23/2004	<100	<20	65	<0.50	<0.50	<0.50	<0.50	<0.50	
	02/15/2005	<100	<20	62	<0.50	<0.50	<0.50	<0.50	<0.50	
MW-5	1/29/2003	<400	<200	82	<5.0	<5.0	<5.0	<5.0	<5.0	
	5/22/2003	<10000	<2000	<50	<50	<50	<50	--	--	
	7/28/2003	<2000	<400	120	<10	<10	<10	<10	<10	
	02/23/2004	<5,000	<1,000	100	<25	<25	<25	38	<25	
	05/04/2004	<5,000	<1,000	42	<25	<25	<25	<25	<25	
	08/04/2004	<5,000	<1,000	390	<25	<25	<25	<25	<25	
	11/10/2004	<1,000	<200	530	<5.0	<5.0	5.5	<5.0	<5.0	
	02/15/2005	<1,000	<200	260	<5.0	<5.0	<5.0	<5.0	<5.0	
MW-7	1/29/2003	--	--	--	--	--	--	--	--	
	5/22/2003	--	--	--	--	--	--	--	--	

Table 2

Fuel Additives Analytical Data

Former BP Station #11132

3201 35th Ave, Oakland, CA

Well Number	Date Sampled	Ethanol (µg/L)	TBA (µg/L)	MTBE (µg/L)	DIPE (µg/L)	ETBE (µg/L)	TAME (µg/L)	1,2-DCA (µg/L)	EDB (µg/L)	Footnotes/ Comments
MW-7	7/28/2003	--	--	--	--	--	--	--	--	
MW-8	1/29/2003	<4000	<2000	<500	<50	<50	<50	<50	<50	
	5/22/2003	<5000	<1000	--	<25	<25	<25	--	--	
	7/28/2003	<20000	<4000	2,100	<100	<100	<100	<100	<100	
	11/18/2003	<2,000	<400	1,700	<10	<10	20	--	--	a,b
	02/23/2004	<10,000	<2,000	110	<50	<50	<50	<50	<50	
	05/04/2004	<5,000	<1,000	2,000	<25	<25	33	<25	<25	
	11/10/2004	<5,000	<1,000	74	<25	<25	<25	<25	<25	
	02/15/2005	<10,000	<2,000	<50	<50	<50	<50	<50	<50	
MW-9	1/29/2003	--	--	--	--	--	--	--	--	
	5/22/2003	<10000	<2000	<50	<50	<50	<50	--	--	
	7/28/2003	<100000	<20000	<500	<500	<500	<500	<500	<500	
	11/18/2003	<2,000	<400	45	<10	<10	<10	--	--	a,b
	02/23/2004	<50,000	<10,000	<250	<250	<250	<250	<250	<250	
	05/04/2004	<5,000	<1,000	<25	<25	<25	<25	<25	<25	
	11/10/2004	<10,000	<2,000	<50	<50	<50	<50	<50	<50	
	02/15/2005	<10,000	<2,000	<50	<50	<50	<50	<50	<50	
MW-10	1/29/2003	--	--	--	--	--	--	--	--	
	5/22/2003	<10000	<2000	300	<50	<50	<50	--	--	
	7/28/2003	--	--	--	--	--	--	--	--	
	11/18/2003	<10,000	<2,000	<50	<50	<50	<50	--	--	b
	02/23/2004	<20,000	<4,000	180	<100	<100	<100	<100	<100	
	05/04/2004	<5,000	<1,000	<25	<25	<25	<25	<25	<25	
	11/10/2004	<5,000	<1,000	230	<25	<25	<25	<25	<25	b
	02/15/2005	<10,000	<2,000	77	<50	<50	<50	<50	<50	
RW-1	1/29/2003	--	--	--	--	--	--	--	--	
	5/22/2003	--	--	--	--	--	--	--	--	
	7/28/2003	--	--	--	--	--	--	--	--	
	11/18/2003	<10,000	11,000	6,100	<50	<50	160	--	--	a,b

Table 2

Fuel Additives Analytical Data

Former BP Station #11132

3201 35th Ave, Oakland, CA

SYMBOLS AND ABBREVIATIONS:

– = Not analyzed/applicable/measured/available

< = Not detected at or above the laboratory reporting limit.

1,2-DCA = 1,2-Dichloroethane

DIPE = Di-isopropyl ether

EDB = 1,2-Dibromoethane

ETBE = Ethyl tert-butyl ether

MTBE = Methyl tert-butyl ether

TAME = tert-Amyl methyl ether

TBA = tert-Butyl alcohol

ug/L = Micrograms per Liter

FOOTNOTES:

a = (TBA) The result was reported with a possible high bias due to the continuing calibration verification falling outside acceptance criteria

b = (Ethanol) The continuing calibration verification was outside of client contractual acceptance limits. However, it was within method acceptance limits. The data should still be useful for its intended purpose.

NOTES:

All volatile organic compounds (Ethanol, TBA, MTBE, DIPE, ETBE, and TAME) analyzed using EPA Method 8260B.

The data within this table collected prior to August 2002 was provided to URS by RM and their previous consultants. URS has not verified the accuracy of this information.

Table 3
Free Product Removal
 Former BP Service Station #11132
 3201 35th Avenue, Oakland, CA

WELL ID	DATE OF MONITORING	PRODUCT THICKNESS (Feet)	PRODUCT REMOVED (Gallons)	PRODUCT REMOVED CUMULATIVE (Gallons)
MW-1	7/9/1990	0.22	2.00	2.00
MW-1	12/21/1990	0.58	2.00	4.00
MW-1	3/7/1991	0.00	---	4.00
MW-1	6/27/1991	0.18	2.00	6.00
MW-1	9/27/1991	0.27	2.00	8.00
MW-1	12/18/1991	0.28	2.00	10.00
MW-1	4/1/1991	0.15	2.00	12.00
MW-1	7/3/1992	0.27	2.00	14.00
MW-1	10/5/1992	0.24	2.00	16.00
MW-1	1/13/1993	0.24	2.00	18.00
MW-1	4/23/1993	0.42	2.00	20.00
MW-1	7/12/1993	0.49	---	20.00
MW-1	10/21/1993	1.09	2.00	22.00
MW-1	1/21/1994	0.76	---	22.00
MW-1	4/20/1994	1.80	2.00	24.00
MW-1	8/1/1994	0.35	---	24.00
MW-1	1/26/1995	1.10	3.00	27.00
MW-1	6/8/95-6/28/95	1.25	0.70	27.70
MW-1	8/22/1995	0.85	0.15	27.85
MW-1	10/30/95-12/23/95	0.69	0.11	27.96
MW-1	1/25/96-2/16/95	1.40	1.08	29.04
MW-1	4/19/1996	1.22	0.75	29.79
MW-1	7/23/1996	0.89	0.00	29.79
MW-1	9/4/1996	---	0.35	30.14
MW-1	11/11/1996	0.89	0.98	31.12
MW-1	1/21/1997	0.90	0.20	31.32
MW-1	4/29/1997	0.85	0.25	31.57
MW-1	8/21/1997	---	0.15	31.72
MW-1	11/2/97-12/9/97	0.87	2.03	33.75
MW-1	2/3/1998	0.32	0.25	34.00
MW-1	2/4/1998	---	---	34.00
MW-1	5/28/1998	0.17	---	34.00
MW-1	12/30/1998	0.08	0.02	34.02
MW-1	2/2/1999	0.03	0.01	34.03
MW-1	5/10/1999	0.03	0.01	34.04
MW-1	8/24/1999	0.06	0.01	34.05
MW-1	11/3/1999	0.36	0.05	34.10
MW-1	3/1/2000	0.23	*	34.10
MW-1	4/21/2000	0.33	0.07	34.17
MW-1	7/31/2000	0.53	0.13	34.30
MW-1	11/20/2000	0.37	0.50	34.80
MW-1	2/18/2001	0.13	0.05	34.85
MW-1	2/26/2001	0.15	0.15	35.00
MW-1	6/7/2001	0.00	---	35.00
MW-1	9/5/2001	0.35	---	35.00
MW-1	11/30/2001	0.41	0.26	35.26

Table 3
Free Product Removal
Former BP Service Station #11132
3201 35th Avenue, Oakland, CA

	WELL ID	DATE OF MONITORING	PRODUCT THICKNESS (Feet)	PRODUCT REMOVED (Gallons)	PRODUCT REMOVED CUMULATIVE (Gallons)
(cont.)	MW-1	12/6/2001	0.27	0.04	35.30
	MW-1	2/20/2002	0.15	0.02	35.32
	MW-1	6/20/2002	0.34	0.07	35.39
	MW-1	9/11/2002	0.40	0.06	35.45
	MW-1	11/12/2002	0.37	0.06	35.51
	MW-1	1/29/2003	0.30	0.32	35.83
	MW-1	5/22/2003	0.20	0.14	35.97
	MW-1	6/24/2003	0.35	0.07	36.04
	MW-1	7/28/2003	0.35	0.08	36.05
	MW-1	8/12/2003	0.23	0.04	36.09
	MW-1	9/12/2003	0.24	0.04	36.13
	MW-1	10/3/2003	0.23	0.04	36.17
	MW-1	11/18/2003	0.25	0.04	36.21
	MW-1	12/31/2003	0.15	0.02	36.23
	MW-1	2/2/2004	0.15	0.02	36.25
	MW-1	2/23/2004	0.09	0.03	36.28
	MW-1	3/18/2004	0.09	0.01	36.29
	MW-1	4/13/2004	0.24	0.04	36.33
	MW-1	5/4/2004	0.16	0.03	36.36
	MW-1	6/2/2004	0.08	0.01	36.37
	MW-1	7/2/2004	0.28	0.04	36.41
	MW-1	8/4/2004	0.10	0.08	36.49
	MW-1	9/22/2004	0.20	0.03	36.52
	MW-1	10/26/2004	0.12	0.02	36.54
	MW-1	11/10/2004	0.14	0.02	36.56
	MW-1	12/27/2004	0.08	0.01	36.57
	MW-1	1/13/2005	0.03	0.01	36.58
	MW-1	2/15/2005	0.04	0.01	36.58
	MW-1	3/7/2005	0.01	0.01	36.59
	MW-8	11/02/93-12/09/98	0.12	1.62	1.62
	MW-8	9/5/2001	0.04	--	1.66
	MW-8	8/12/2003	<0.01 (SHEEN)	--	1.66
	MW-8	10/3/2003	<0.01 (SHEEN)	--	1.66
	MW-8	11/18/2003	<0.01 (SHEEN)	--	1.66
	MW-8	12/31/2003	<0.01 (SHEEN)	--	1.66
	MW-8	2/2/2004	<0.01 (SHEEN)	--	1.66
	MW-8	2/23/2004	<0.01 (SHEEN)	--	1.66
	MW-8	3/18/2004	<0.01 (SHEEN)	--	1.66
	MW-8	4/13/2004	<0.01 (SHEEN)	--	1.66
	MW-8	5/4/2004	<0.01 (SHEEN)	--	1.66
	MW-8	6/2/2004	<0.01 (SHEEN)	--	1.66
	MW-8	7/2/2004	--	--	1.66
	MW-8	8/4/2004	0.05	0.11	1.77
	MW-8	9/22/2004	--	--	1.77
	MW-8	10/26/2004	--	--	1.77
	MW-8	11/10/2004	--	--	1.77
	MW-8	12/26/2004	--	--	1.77
	MW-8	1/13/2005	--	--	1.77
	MW-8	2/15/2005	--	--	1.77
	MW-8	3/7/2005	--	--	1.77

Table 3
Free Product Removal
Former BP Service Station #11132
3201 35th Avenue, Oakland, CA

WELL ID	DATE OF MONITORING	PRODUCT THICKNESS (Feet)	PRODUCT REMOVED (Gallons)	PRODUCT REMOVED CUMULATIVE (Gallons)
MW-9	11/2/93-4/29/97	0.10	<0.1	0.88
MW-9	11/5/1997	0.01	<0.1	0.88
MW-9	1/29/2003	0.10	0.19	1.07
MW-9	6/24/2003	NM	NM	1.07
MW-9	7/28/2003	<0.01 (SHEEN)	--	1.07
MW-9	8/12/2003	<0.01 (SHEEN)	--	1.07
MW-9	9/12/2003	<0.01 (SHEEN)	--	1.07
MW-9	10/3/2003	0.01	0.00	1.07
MW-9	11/18/2003	<0.01 (SHEEN)	--	1.07
MW-9	12/31/2003	<0.01 (SHEEN)	--	1.07
MW-9	2/2/2004	<0.01 (SHEEN)	--	1.07
MW-9	2/23/2004	<0.01 (SHEEN)	--	1.07
MW-9	3/18/2004	<0.01 (SHEEN)	--	1.07
MW-9	4/13/2004	<0.01 (SHEEN)	--	1.07
MW-9	5/4/2004	<0.01 (SHEEN)	--	1.07
MW-9	6/2/2004	<0.01 (SHEEN)	--	1.07
MW-9	7/2/2004	-----Well Parked Over-----		1.07
MW-9	8/4/2004	0.03	0.05	1.12
MW-9	9/22/2004	--	--	1.12
MW-9	10/26/2004	--	--	1.12
MW-9	11/10/2004	--	--	1.12
MW-9	12/27/2004	-----Well Parked Over-----		1.12
MW-9	1/13/2005	--	--	1.12
MW-9	2/15/2005	--	--	1.12
MW-9	3/7/2005	--	--	1.12
MW-10	9/7/93-7/23/96	---	10.52	10.52
MW-10	9/4/1996	0.76	0.10	10.62
MW-10	11/11/1996	---	0.20	10.82
MW-10	1/21/1997	---	<0.03	10.85
MW-10	4/29/1997	---	0.04	10.89
MW-10	4/29/1997	---	0.04	10.93
MW-10	12/2/1997	0.03	<0.1	10.93
MW-10	2/3/1998	---	<0.1	10.93
MW-10	9/5/2001	0.01	--	10.93
MW-10	11/12/2002	0.07	0.01	10.94
MW-10	1/29/2003	0.03	0.03	10.97
MW-10	6/24/2003	0.04	0.01	10.98
MW-10	7/28/2003	0.04	0.02	11.00
MW-10	8/12/2003	<0.01 (SHEEN)	--	11.00
MW-10	10/3/2003	<0.01 (SHEEN)	--	11.00
MW-10	11/18/2003	<0.01 (SHEEN)	--	11.00
MW-10	12/31/2003	<0.01 (SHEEN)	--	11.00
MW-10	2/2/2004	<0.01 (SHEEN)	--	11.00
MW-10	2/23/2004	<0.01 (SHEEN)	--	11.00
MW-10	3/18/2004	<0.01 (SHEEN)	--	11.00
MW-10	4/13/2004	<0.01 (SHEEN)	--	11.00
MW-10	5/4/2004	<0.01 (SHEEN)	--	11.00
MW-10	6/2/2004	<0.01 (SHEEN)	--	11.00
MW-10	7/2/2004	<0.01 (SHEEN)	--	11.00

Table 3
Free Product Removal
Former BP Service Station #11132
3201 35th Avenue, Oakland, CA

WELL ID	DATE OF MONITORING	PRODUCT THICKNESS (Feet)	PRODUCT REMOVED (Gallons)	PRODUCT REMOVED CUMULATIVE (Gallons)
(cont.) MW-10	8/4/2004	0.08	0.11	11.11
MW-10	9/22/2004	--	--	11.11
MW-10	10/26/2004	--	--	11.11
MW-10	11/10/2004	--	--	11.11
MW-10	12/27/2004	--	--	11.11
MW-10	1/13/2005	<0.01 (SHEEN)	--	11.11
MW-10	2/15/2005	--	--	11.11
MW-10	3/7/2005	--	--	11.11
RW-1	9/5/2001	0.02	---	0.00
RW-1	6/20/2002	**	---	0.00
RW-1	9/11/2002	0.03	0.04	0.04
RW-1	11/12/2002	0.02	0.03	0.07
RW-1	1/29/2003	0.04	0.07	0.14
RW-1	6/24/2003	0.07	0.04	0.18
RW-1	7/28/2003	0.04	0.02	0.20
RW-1	8/12/2003	<0.01 (SHEEN)	--	0.20
RW-1	9/12/2003	0.07	0.10	0.30
RW-1	10/3/2003	0.03	0.04	0.34
RW-1	11/18/2003	<0.01 (SHEEN)	--	0.34
RW-1	12/31/2003	<0.01 (SHEEN)	--	0.34
RW-1	2/23/2004	0.01	0.01	0.35
RW-1	3/18/2004	0.09	0.12	0.47
RW-1	4/13/2004	0.02	0.03	0.50
RW-1	5/4/2004	0.02	0.03	0.53
RW-1	6/2/2004	0.05	0.02	0.55
RW-1	7/2/2004	0.11	0.16	0.71
RW-1	8/4/2004	0.05	0.16	0.87
RW-1	9/22/2004	0.06	0.09	0.95
RW-1	10/26/2004	0.01	0.01	0.96
RW-1	11/10/2004	0.02	0.03	0.99
RW-1	12/27/2004	0.03	0.01	1.00
RW-1	1/13/2005	0.01	0.00	1.01
RW-1	2/15/2005	0.03	0.04	1.05
RW-1	3/7/2005	0.02	0.03	1.08

Free Product Removed this Quarter = 0.09
Total Free Product = 51.67

NM = Unable to gauge free product thickness or remove product because the well was inaccessible.

* There was no hazardous waste drum on-site, therefore no product was removed.

** Indeterminate thickness of product. The nature of product is unknown, very viscous.

*** Data prior to 1998 is incomplete, and amounts removed are estimates based on quarter reports from the previous consultants.

The data within this table collected prior to June 2002 was provided to URS by RM and their previous consultants. URS has not verified the accuracy of this information.

ATTACHMENT A
FIELD PROCEDURES AND FIELD DATA SHEETS

FIELD PROCEDURES

Sampling Procedures

The sampling procedure for each well consists first of measuring the water level and depth to bottom, and checking for the presence of free phase petroleum product (free product), using either an electronic indicator and a clear Teflon™ bailer or an oil-water interface probe.

Wells not containing free product are purged approximately three casing volumes of water (or until dewatered) using a centrifugal pump, gas displacement pump, or bailer. Equipment and purging method used for the current sampling event is noted on the attached field data sheets. During purging, temperature, pH, and electrical conductivity are monitored to document that these parameters are stable prior to collecting samples. After purging, water levels are allowed to partially (approximately 80%) recover. Groundwater samples (both purge and no purge) are collected using a Teflon bailer, placed into appropriate Environmental Protection Agency- (EPA) approved containers, labeled, logged onto chain-of-custody records, and transported on ice to a California State-certified laboratory. Wells with free product are not sampled and free product is removed according to California Code of Regulation, Title 23, Div. 3, Chap. 16, Section 2655, UST Regulations.

ARCO / BP WELL MONITORING DATA SHEET

BTS #: <u>05013-MD2</u>	Station # <u>1132</u>
Sampler: <u>MD</u>	Date: <u>1/13/08</u>
Well I.D.: <u>MW-1</u>	Well Diameter: <u>2</u> 3 4 6 8
Total Well Depth: <u>44</u>	Depth to Water: <u>14.58</u>
Depth to Free Product: <u>14.55</u>	Thickness of Free Product (feet): <u>0.03</u>
Referenced to: <u>PVC</u> Grade	D.O. Meter (if req'd): YSI HACH

Well Diameter	Multiplier	Well Diameter	Multiplier
1"	0.04	4"	0.65
2"	0.16	6"	1.47
3"	0.37	Other	radius ² * 0.163

Purge Method: Bailer Disposable Bailer Positive Air Displacement Electric Submersible Extraction Pump Other: _____

Sampling Method: Bailer Disposable Bailer Extraction Port Other: _____

Top of Screen: _____ If well is listed as a no-purge, confirm that water level is below the top of screen. Otherwise, the well must be purged.

_____	X	_____	=	_____
1 Calc. Volume (Gals.)		Specified Volumes		Calculated Volume Gals.

Time	Temp (°F)	pH	Conductivity (mS or µS)	Gals. Removed	Observations
					<u>Removed ~ 20 gal of SPH</u>
					<u>Very thick, & Dark Brown</u>

Did well dewater? Yes No Gallons actually evacuated: _____

Sampling Time: _____ Sampling Date: _____

Sample I.D.: _____ Laboratory: Pace Sequoia Other _____

Analyzed for: GRO BTEX MTBE DRO Other: _____

D.O. (if req'd):	Pre-purge:	mg/L	Post-purge:	mg/L
O.R.P. (if req'd):	Pre-purge:	mV	Post-purge:	mV

ARCO / BP WELL MONITORING DATA SHEET

BTS #: <u>050113-MP2</u>	Station # <u>11132</u>
Sampler: <u>and</u>	Date: <u>1/13/05</u>
Well I.D.: <u>MW-10</u>	Well Diameter: <u>2</u> 3 4 6 8 <u> </u>
Total Well Depth:	Depth to Water: <u>12.21</u>
Depth to Free Product: <u>12.20</u>	Thickness of Free Product (feet): <u>0.01</u>
Referenced to: <u>PVC</u> Grade	D.O. Meter (if req'd): YSI HACH

Well Diameter	Multiplier	Well Diameter	Multiplier
1"	0.04	4"	0.65
2"	0.16	6"	1.47
3"	0.37	Other	radius ² * 0.163

Purge Method: <u>Bailer</u> Disposable Bailer Positive Air Displacement Electric Submersible Extraction Pump Other: _____	Sampling Method: <u>Bailer</u> Disposable Bailer Extraction Port Other: _____
--	--

Top of Screen: _____ If well is listed as a no-purge, confirm that water level is below the top of screen. Otherwise, the well must be purged.

$\frac{\text{1 Case Volume (Gals.)}}{\text{Specified Volumes}}$	X	$\frac{\text{Gals.}}{\text{Calculated Volume}}$	=	$\frac{\text{Gals.}}{\text{Calculated Volume}}$
---	---	---	---	---

Time	Temp (°F)	pH	Conductivity (mS or µS)	Gals. Removed	Observations
					<u>checked well w/Disp. Bailer</u>
					<u>Heavy sheen detected, but no distinct layering. Bailed sheen</u>

Did well dewater? Yes <input type="checkbox"/> No <input checked="" type="checkbox"/>	Gallons actually evacuated: _____
Sampling Time: _____	Sampling Date: _____
Sample I.D.: _____	Laboratory: Pace Sequoia Other _____
Analyzed for: GRO BTEX MTBE DRO Other: _____	
D.O. (if req'd): Pre-purge: _____ mg/L	Post-purge: _____ mg/L
O.R.P. (if req'd): Pre-purge: _____ mV	Post-purge: _____ mV

ARCO / BP WELL MONITORING DATA SHEET

BTS #: <u>050113-MD2</u>	Station # <u>11132</u>
Sampler: <u>MY</u>	Date: <u>1/13/05</u>
Well I.D.: <u>RW-1</u>	Well Diameter: 2 3 4 <u>6</u> 8
Total Well Depth:	Depth to Water: <u>12.51</u>
Depth to Free Product: <u>12.50</u>	Thickness of Free Product (feet): <u>0.01</u>
Referenced to: <u>PVC</u> Grade	D.O. Meter (if req'd): YSI HACH

Well Diameter	Multiplier	Well Diameter	Multiplier
1"	0.04	4"	0.65
2"	0.16	6"	1.47
3"	0.37	Other	radius ² * 0.163

Purge Method: ~~Bailer~~
~~Disposable Bailer~~
~~Positive Air Displacement~~
~~Electric Submersible~~
~~Extraction Pump~~
 Other: _____

Sampling Method: Bailer
~~Disposable Bailer~~
 Extraction Port
 Other: _____

Top of Screen: _____ If well is listed as a no-purge, confirm that water level is below the top of screen. Otherwise, the well must be purged.

_____	X	_____	=	_____	Gals.
1 Case Volume (Gals.)		Specified Volumes		Calculated Volume	

Time	Temp (°F)	pH	Conductivity (mS or µS)	Gals. Removed	Observations
					<u>SPT in well is very thick, not layered evenly on top of water. seen MY</u>
					<u>large Black globs of SPT Bailed.</u>
					<u>~15M</u>

Did well dewater? Yes No Gallons actually evacuated: _____

Sampling Time: _____ Sampling Date: _____

Sample I.D.: _____ Laboratory: Pace Sequoia Other _____

Analyzed for: GRO BTEX MTBE DRO Other: _____

D.O. (if req'd):	Pre-purge:	mg/L	Post-purge:	mg/L
O.R.P. (if req'd):	Pre-purge:	mV	Post-purge:	mV

ARCO / BP WELL MONITORING DATA SHEET

BTS #: <u>050215-WC1</u>	Station # <u>11132</u>
Sampler: <u>WC</u>	Date: <u>2/15/05</u>
Well I.D.: <u>MW-1</u>	Well Diameter: <u>2</u> 3 4 6 8
Total Well Depth: <u>—</u>	Depth to Water: <u>1613</u>
Depth to Free Product: <u>16.09</u>	Thickness of Free Product (feet): <u>.04</u>
Referenced to: <u>PVS</u> Grade	D.O. Meter (if req'd): YSI HACH

Well Diameter	Multiplier	Well Diameter	Multiplier
1"	0.04	4"	0.65
2"	0.16	6"	1.47
3"	0.37	Other	radius ² * 0.163

Purge Method: Bailer
 Disposable Bailer
 Positive Air Displacement
 Electric Submersible
 Extraction Pump
 Other: _____

Sampling Method: Bailer
 Disposable Bailer
 Extraction Port
 Other: _____

Top of Screen: _____ If well is listed as a no-purge, confirm that water level is below the top of screen. Otherwise, the well must be purged.

_____	X	_____	=	_____ Gals.
Purge Volume (Gals.)		Specified Volumes		Calculated Volume

Time	Temp (°F)	pH	Conductivity (mS or µS)	Gals. Removed	Observations
		<u>bailed</u>	<u>24 ml</u>	<u>5ph</u>	

Did well dewater? Yes <input type="checkbox"/> No <input checked="" type="checkbox"/>	Gallons actually evacuated: _____
Sampling Time: _____	Sampling Date: _____
Sample I.D.: _____	Laboratory: <input type="checkbox"/> Pace <input type="checkbox"/> Sequoia <input type="checkbox"/> Other _____
Analyzed for: GRO <input type="checkbox"/> BTEX <input type="checkbox"/> MTBE <input type="checkbox"/> DRO <input type="checkbox"/> Other: _____	
D.O. (if req'd): Pre-purge: _____ mg/L	Post-purge: _____ mg/L
O.R.P. (if req'd): Pre-purge: _____ mV	Post-purge: _____ mV

ARCO / BP WELL MONITORING DATA SHEET

BTS #: <u>050215-wel</u>	Station # <u>1132</u>
Sampler: <u>WC</u>	Date: <u>2/15/05</u>
Well I.D.: <u>MW-2</u>	Well Diameter: <u>(2)</u> 3 4 6 8
Total Well Depth: <u>31.60</u>	Depth to Water: <u>15.62</u>
Depth to Free Product:	Thickness of Free Product (feet):
Referenced to: <u>PVC</u> Grade	D.O. Meter (if req'd): YSI HACH

Well Diameter	Multiplier	Well Diameter	Multiplier
1"	0.04	4"	0.65
2"	0.16	6"	1.47
3"	0.37	Other	radius ² * 0.163

Purge Method: Bailer
 Disposable Bailer
 Positive Air Displacement
 Electric Submersible
 Extraction Pump
 Other: _____

Sampling Method: Bailer
 Disposable Bailer
 Extraction Port
 Other: _____

Top of Screen: _____ If well is listed as a no-purge, confirm that water level is below the top of screen. Otherwise, the well must be purged.

<u>2.6</u>	x	<u>3</u>	=	<u>7.8</u>	Gals.
Purge Volume (Gals.)		Specified Volumes		Calculated Volume	

Time	Temp (°F)	pH	Conductivity (mS or μ S)	Gals. Removed	Observations
1428	67.5	7.3	1518	3	odor/grey
1432	68.4	7.2	1547	6	green/odor/clear
1436	68.8	7.1	1553	8	green/odor/clear

Did well dewater? Yes No Gallons actually evacuated: 8

Sampling Time: 1441 Sampling Date: 2/15/05

Sample I.D.: MW-2 Laboratory: Pace Sequoia Other _____

Analyzed for: GPC BTEX MTBE DRO Other: see COC

D.O. (if req'd):	Pre-purge:	mg/L	Post-purge:	mg/L
	O.R.P. (if req'd):	Pre-purge:	mV	Post-purge:

ARCO / BP WELL MONITORING DATA SHEET

BTS #: <u>050215-WCJ</u>	Station # <u>1132</u>
Sampler: <u>WC</u>	Date: <u>2/15/05</u>
Well I.D.: <u>New-3</u>	Well Diameter: <u>3</u> 3 4 6 8
Total Well Depth: <u>34.40</u>	Depth to Water: <u>14.31</u>
Depth to Free Product:	Thickness of Free Product (feet):
Referenced to: <u>PVC</u> Grade	D.O. Meter (if req'd): YSI HACH

Well Diameter	Multiplier	Well Diameter	Multiplier
1"	0.04	4"	0.65
2"	0.16	6"	1.47
3"	0.37	Other	radius ² * 0.163

Purge Method: Bailer Disposable Bailer Positive Air Displacement Electric Submersible Extraction Pump Other: _____

Sampling Method: Bailer Disposable Bailer Extraction Port Other: _____

Top of Screen: _____ If well is listed as a no-purge, confirm that water level is below the top of screen. Otherwise, the well must be purged.

<u>3.2</u>	x	<u>3</u>	=	<u>9.6</u>	Gals.
1 Case Volume (Gals.)		Specified Volumes		Calculated Volume	

Time	Temp (°F)	pH	Conductivity (mS or μ S)	Gals. Removed	Observations
1130	67.4	7.3	472	3	cloudy
1133	68.8	7.4	491	6	cloudy
1137	68.3	7.5	517	10	clear

Did well dewater? Yes No Gallons actually evacuated: 10

Sampling Time: 1142 Sampling Date: 2/15/05

Sample I.D.: New-3 Laboratory: Pace Sequoia Other _____

Analyzed for: PFO STX MTBE DRO Other: see COC

D.O. (if req'd):	Pre-purge:	mg/L	Post-purge:	mg/L
O.R.P. (if req'd):	Pre-purge:	mV	Post-purge:	mV

ARCO / BP WELL MONITORING DATA SHEET

BTS #: <u>050215-WC1</u>	Station # <u>1132</u>
Sampler: <u>WC</u>	Date: <u>2/15/05</u>
Well I.D.: <u>MW-4</u>	Well Diameter: <u>3</u> 3 4 6 8
Total Well Depth: <u>40.00</u>	Depth to Water: <u>18.91</u>
Depth to Free Product:	Thickness of Free Product (feet):
Referenced to: <u>PVC</u> Grade	D.O. Meter (if req'd): YSI HACH

Well Diameter	Multiplier	Well Diameter	Multiplier
1"	0.04	4"	0.65
2"	0.16	6"	1.47
3"	0.37	Other	radius ² * 0.163

Purge Method: Bailer Sampling Method: Bailer

Disposable Bailer Disposable Bailer

Positive Air Displacement Extraction Port

Electric Submersible

Extraction Pump

Other: _____

Top of Screen: _____ If well is listed as a no-purge, confirm that water level is below the top of screen. Otherwise, the well must be purged.

<u>3.7</u>	x	<u>3</u>	=	<u>11.1</u>	Gals.
1 Volume (Gals.)		Specified Volumes		Calculated Volume	

Time	Temp (°F)	pH	Conductivity (mS or µS)	Gals. Removed	Observations
<u>1059</u>	<u>65.8</u>	<u>7.8</u>	<u>6488</u>	<u>4</u>	<u>Brown</u>
<u>1101</u>	<u>66.1</u>	<u>7.4</u>	<u>637</u>	<u>8</u>	<u>"</u>
<u>1104</u>	<u>66.5</u>	<u>7.6</u>	<u>636</u>	<u>12</u>	<u>"</u>

Did well dewater? Yes No Gallons actually evacuated: 12

Sampling Time: 1109 Sampling Date: 2/15/05

Sample I.D.: MW-4 Laboratory: Pace Sequoia Other _____

Analyzed for: GRO BTEX MTBE DRO Other: See COC

D.O. (if req'd):	Pre-purge:	mg/L	Post-purge:	mg/L
O.R.P. (if req'd):	Pre-purge:	mV	Post-purge:	mV

ARCO / BP WELL MONITORING DATA SHEET

BTS #: 050215-WC1	Station # 11132
Sampler: WC	Date: 2/15/05
Well I.D.: MW-5	Well Diameter: <input checked="" type="radio"/> 3 <input type="radio"/> 4 <input type="radio"/> 6 <input type="radio"/> 8
Total Well Depth: 32.10	Depth to Water: 12.75
Depth to Free Product:	Thickness of Free Product (feet):
Referenced to: <input checked="" type="radio"/> PVC <input type="radio"/> Grade	D.O. Meter (if req'd): <input type="radio"/> YSI <input type="radio"/> HACH

Well Diameter	Multiplier	Well Diameter	Multiplier
1"	0.04	4"	0.65
2"	0.16	6"	1.47
3"	0.37	Other	radius ² * 0.163

Purge Method: Bailer Disposable Bailer Positive Air Displacement Electric Submersible Extraction Pump Other: _____

Sampling Method: Bailer Disposable Bailer Extraction Port Other: _____

Top of Screen: _____ If well is listed as a no-purge, confirm that water level is below the top of screen. Otherwise, the well must be purged.

3.1	X	3	=	9.3	Gals.
1 Cal Volume (Gals.)		Specified Volumes		Calculated Volume	

Time	Temp (°F)	pH	Conductivity (mS or µS)	Gals. Removed	Observations
1306	66.4	7.4	1351	4	odor/clear
1311	67.3	7.2	1363	7	odor/clear
1315	67.2	7.2	1361	10	odor/clear

Did well dewater? Yes No Gallons actually evacuated: 10

Sampling Time: 1320

Sampling Date: _____

Sample I.D.: MW-5

Laboratory: Pace Sequoia Other _____

Analyzed for: GRO BTEX MTBE DRO

Other: see COC

D.O. (if req'd):	Pre-purge:	mg/L	Post-purge:	mg/L
O.R.P. (if req'd):	Pre-purge:	mV	Post-purge:	mV

ARCO / BP WELL MONITORING DATA SHEET

BTS #: 050215-wc1	Station # 11132
Sampler: WC	Date: 2/15/05
Well I.D.: MW-8	Well Diameter: <input checked="" type="radio"/> 2 3 4 6 8 ___
Total Well Depth: 34.01	Depth to Water: 12.85
Depth to Free Product:	Thickness of Free Product (feet):
Referenced to: <input checked="" type="radio"/> PVC Grade	D.O. Meter (if req'd): YSI HACH

Well Diameter	Multiplier	Well Diameter	Multiplier
1"	0.04	4"	0.65
2"	0.16	6"	1.47
3"	0.37	Other	radius ² * 0.163

Purge Method: <input checked="" type="radio"/> Bailer <input checked="" type="radio"/> Disposable Bailer <input checked="" type="radio"/> Positive Air Displacement <input type="radio"/> Electric Submersible <input type="radio"/> Extraction Pump Other: _____	Sampling Method: <input checked="" type="radio"/> Bailer <input checked="" type="radio"/> Disposable Bailer <input type="radio"/> Extraction Port Other: _____
--	---

Top of Screen: _____ If well is listed as a no-purge, confirm that water level is below the top of screen. Otherwise, the well must be purged.

3.4	x	3	=	10.2	Gals.
1 Cu Volume (Gals.)		Specified Volumes		Calculated Volume	

Time	Temp (°F)	pH	Conductivity (mS or <input checked="" type="radio"/> μS)	Gals. Removed	Observations
1232	65.5	7.2	1234	4	odor/cloudy grey
1238	65.6	7.3	1286	8	odor/cloudy
1242	65.7	7.2	1290	11	odor/clear

Did well dewater? Yes <input checked="" type="radio"/> No <input checked="" type="radio"/>	Gallons actually evacuated: 11
Sampling Time: 1247	Sampling Date: 2/15/05
Sample I.D.: MW-8	Laboratory: Pace <input checked="" type="radio"/> Sequoia Other _____
Analyzed for: <input checked="" type="radio"/> GRO <input checked="" type="radio"/> BTEX MTBE DRO Other: _____	
D.O. (if req'd):	Pre-purge: _____ mg/L Post-purge: _____ mg/L
O.R.P. (if req'd):	Pre-purge: _____ mV Post-purge: _____ mV

ARCO / BP WELL MONITORING DATA SHEET

BTS #: 050215-WC1	Station # 1132
Sampler: WC	Date: 2/15/05
Well I.D.: MW-9	Well Diameter: 3 4 6 8
Total Well Depth: 29.23	Depth to Water: 12.95
Depth to Free Product:	Thickness of Free Product (feet):
Referenced to: RVC Grade	D.O. Meter (if req'd): YSI HACH

Well Diameter	Multiplier	Well Diameter	Multiplier
1"	0.04	4"	0.65
2"	0.16	6"	1.47
3"	0.37	Other	radius ² * 0.163

Purge Method: <input type="checkbox"/> Bailer <input checked="" type="checkbox"/> Disposable Bailer <input type="checkbox"/> Positive Air Displacement <input type="checkbox"/> Electric Submersible <input type="checkbox"/> Extraction Pump Other: _____	Sampling Method: <input type="checkbox"/> Bailer <input checked="" type="checkbox"/> Disposable Bailer <input type="checkbox"/> Extraction Port Other: _____
---	---

Top of Screen: _____ If well is listed as a no-purge, confirm that water level is below the top of screen. Otherwise, the well must be purged.

2.6	X	3	=	7.8	Gals.
1 Case Volume (Gals.)		Specified Volumes		Calculated Volume	

Time	Temp (°F)	pH	Conductivity (mS or µS)	Gals. Removed	Observations
1201	66.6	7.3	937	3	Green / odor / clear
1205	67.7	7.4	1023	6	" / " / "
1207	68.2	7.3	1028	8	" / " / "

Did well dewater? Yes <input type="checkbox"/> No <input checked="" type="checkbox"/>	Gallons actually evacuated: 8
Sampling Time: 1212	Sampling Date: 2/15/05
Sample I.D.: MW-9	Laboratory: Pace Sequoia Other _____
Analyzed for: <input checked="" type="checkbox"/> CR <input checked="" type="checkbox"/> BTEX MTBE DRO	Other: See COL
D.O. (if req'd):	Pre-purge: _____ mg/L Post-purge: _____ mg/L
O.R.P. (if req'd):	Pre-purge: _____ mV Post-purge: _____ mV

ARCO / BP WELL MONITORING DATA SHEET

BTS #: 050215-WC1	Station # 1132
Sampler: WC	Date: 2/15/05
Well I.D.: MW-10	Well Diameter: 3 3 4 6 8
Total Well Depth: 34.25	Depth to Water: 14.19
Depth to Free Product:	Thickness of Free Product (feet):
Referenced to: PVC Grade:	D.O. Meter (if req'd): YSI HACH

Well Diameter	Multiplier	Well Diameter	Multiplier
1"	0.04	4"	0.65
2"	0.16	6"	1.47
3"	0.37	Other	radius ² * 0.163

Purge Method: <input type="checkbox"/> Bailer <input type="checkbox"/> Disposable Bailer <input checked="" type="checkbox"/> Positive Air Displacement <input type="checkbox"/> Electric Submersible <input type="checkbox"/> Extraction Pump Other: _____	Sampling Method: <input type="checkbox"/> Bailer <input checked="" type="checkbox"/> Disposable Bailer <input type="checkbox"/> Extraction Port Other: _____
---	---

Top of Screen: _____ If well is listed as a no-purge, confirm that water level is below the top of screen. Otherwise, the well must be purged.

3.2	x	3	=	9.6	Gals.
1 Well Volume (Gals.)		Specified Volumes		Calculated Volume	

Time	Temp (°F)	pH	Conductivity (mS or μ S)	Gals. Removed	Observations
1347	64.6	7.4	847	4	odor/grey
1351	64.1	7.3	820	7	odor/grey
1354	64.7	7.2	828	10	odor/cloudy grey

Did well dewater? Yes <input checked="" type="checkbox"/> No <input type="checkbox"/>	Gallons actually evacuated: 10
Sampling Time: 1359	Sampling Date: 2/15/05
Sample I.D.: MW-10	Laboratory: Pace <input checked="" type="checkbox"/> Sequoia <input type="checkbox"/> Other _____
Analyzed for: <input checked="" type="checkbox"/> PRO <input checked="" type="checkbox"/> BTEX <input type="checkbox"/> MTBE <input type="checkbox"/> DRO Other: see COC	
D.O. (if req'd):	Pre-purge: _____ mg/L Post-purge: _____ mg/L
O.R.P. (if req'd):	Pre-purge: _____ mV Post-purge: _____ mV

ARCO / BP WELL MONITORING DATA SHEET

BTS #: <u>050215-WC1</u>	Station # <u>1132</u>
Sampler: <u>WC</u>	Date: <u>2/15/05</u>
Well I.D.: <u>RW-1</u>	Well Diameter: 2 3 4 <u>6</u> 8
Total Well Depth: _____	Depth to Water: <u>15.24</u>
Depth to Free Product: <u>15.21</u>	Thickness of Free Product (feet): <u>.03</u>
Referenced to: <u>PVC</u> Grade	D.O. Meter (if req'd): YSI HACH

Well Diameter	Multiplier	Well Diameter	Multiplier
1"	0.04	4"	0.65
2"	0.16	6"	1.47
3"	0.37	Other	radius ² * 0.163

Purge Method: <u>Bailer</u> <input type="checkbox"/> Disposable Bailer <input type="checkbox"/> Positive Air Displacement <input type="checkbox"/> Electric Submersible <input type="checkbox"/> Extraction Pump Other: _____	Sampling Method: <u>Bailer</u> <input type="checkbox"/> Disposable Bailer <input type="checkbox"/> Extraction Port Other: _____
--	--

Top of Screen: _____ If well is listed as a no-purge, confirm that water level is below the top of screen. Otherwise, the well must be purged.

$\frac{\text{1 Case Volume (Gals.)}}{\text{Specified Volumes}}$	X	$\frac{\text{_____}}{\text{_____}}$	=	$\frac{\text{_____}}{\text{_____}}$ Gals. Calculated Volume
---	---	-------------------------------------	---	--

Time	Temp (°F)	pH	Conductivity (mS or µS)	Gals. Removed	Observations
					<u>Bailed 166 ml of SpH from RW-1</u>

Did well dewater? Yes <input type="checkbox"/> No <input type="checkbox"/>	Gallons actually evacuated: _____	
Sampling Time: _____	Sampling Date: _____	
Sample I.D.: _____	Laboratory: Pace Sequoia Other _____	
Analyzed for: GRO BTEX MTBE DRQ Other: _____		
D.O. (if req'd):	Pre-purge: _____ mg/L	Post-purge: _____ mg/L
O.R.P. (if req'd):	Pre-purge: _____ mV	Post-purge: _____ mV

BP GEM OIL COMPANY TYPE A BILL OF LADING

SOURCE RECORD BILL OF LADING FOR NON-HAZARDOUS PURGEWATER RECOVERED FROM GROUNDWATER WELLS AT BP GEM OIL COMPANY FACILITIES IN THE STATE OF CALIFORNIA. THE NON-HAZARDOUS PURGE-WATER WHICH HAS BEEN RECOVERED FROM GROUND-WATER WELLS IS COLLECTED BY THE CONTRACTOR, MADE UP INTO LOADS OF APPROPRIATE SIZE AND HAULED BY DILLARD ENVIRONMENTAL TO THE ALTAMONT LANDFILL AND RESOURCE RECOVERY FACILITY IN LIVERMORE, CALIFORNIA.

The contractor performing this work is RLAINE TECH SERVICES, INC. (BTS), 1680 Rogers Avenue, San Jose, CA 95112 (phone [408] 573-0555). Blaine Tech Services, Inc. is authorized by BP GEM OIL COMPANY to recover, collect, apportion into loads the Non-Hazardous Well Purgewater that is drawn from wells at the BP GEM Oil Company facility indicated below and deliver that purgewater to BTS. Transport routing of the Non-Hazardous Well Purgewater may be direct from one BP GEM facility to the designated destination point; from one BP GEM facility to the designated destination point via another BP GEM facility; from a BP GEM facility to the designated destination point via the contractor's facility, or any combination thereof. The Non-Hazardous Well Purgewater is and remains the property of BP GEM Oil Company.

This Source Record BILL OF LADING was initiated to cover the recovery of Non-Hazardous Well Purgewater from wells at the BP GEM Oil Company facility described below:

11132

Station #

3201 35th Ave., Oakland

Station Address

Total Gallons Collected From Groundwater Monitoring Wells:

85 gallons

added equip.

2 gal

any other

adjustments

170 gal

TOTAL GALS.

87 gal

loaded onto

BTS vehicle #

72

BTS event #

205 gal

time

date

050215-001

1600

2/15/05

signature

[Signature]

REC'D AT

time

date

Blaine Tech

1730

2/15/05

unloaded by

[Signature]

signature

ARCO / BP WELL MONITORING DATA SHEET

BTS #: <u>050307-DW-3</u>	Station # <u>11132</u>
Sampler: <u>DW</u>	Date: <u>3-7-05</u>
Well I.D.: <u>MW-1</u>	Well Diameter: <u>(2)</u> 3 4 6 8 _____
Total Well Depth: <u>-</u>	Depth to Water: <u>13.31</u>
Depth to Free Product: <u>13.30</u>	Thickness of Free Product (feet): <u>.01</u>
Referenced to: <u>PVC</u> Grade	D.O. Meter (if req'd): YSI HACH

Well Diameter	Multiplier	Well Diameter	Multiplier
1"	0.04	4"	0.65
2"	0.16	6"	1.47
3"	0.37	Other	radius ² * 0.163

Purge Method: Bailer Disposable Bailer Positive Air Displacement Electric Submersible Extraction Pump Other: _____

Sampling Method: Bailer Disposable Bailer Extraction Port Other: _____

Top of Screen: _____ If well is listed as a no-purge, confirm that water level is below the top of screen. Otherwise, the well must be purged.

_____	X	<u>check SPH</u>	=	_____ Gals.
1 Case Volume (Gals.)		Specified Volumes		Calculated Volume

Time	Temp (°F)	pH	Conductivity (mS or µS)	Gals. Removed	Observations
					<u>Bailed ≈ 25 ml spht from well</u>

Did well dewater? Yes No Gallons actually evacuated: _____

Sampling Time: _____ Sampling Date: _____

Sample I.D.: _____ Laboratory: Pace Sequoia Other: _____

Analyzed for: GRO BTEX MTBE DRO Other: _____

D.O. (if req'd):	Pre-purge:	mg/L	Post-purge:	mg/L
O.R.P. (if req'd):	Pre-purge:	mV	Post-purge:	mV

ARCO / BP WELL MONITORING DATA SHEET

BTS #: <u>050307-DW-3</u>	Station # <u>11132</u>
Sampler: <u>DW</u>	Date: <u>3-7-05</u>
Well I.D.: <u>MW-8</u>	Well Diameter: <u>②</u> 3 4 6 8 _____
Total Well Depth: <u>—</u>	Depth to Water: <u>9.71</u>
Depth to Free Product:	Thickness of Free Product (feet):
Referenced to: <u>PVC</u> Grade	D.O. Meter (if req'd): YSI HACH

Well Diameter	Multiplier	Well Diameter	Multiplier
1"	0.04	4"	0.65
2"	0.16	6"	1.47
3"	0.37	Other	radius ² * 0.163

Purge Method: Bailer Disposable Bailer Positive Air Displacement Electric Submersible Extraction Pump Other: _____	Sampling Method: Bailer Disposable Bailer Extraction Port Other: _____
--	--

Top of Screen: _____ If well is listed as a no-purge, confirm that water level is below the top of screen. Otherwise, the well must be purged.

_____ 1 Case Volume (Gals.)	x	<u>check SPH</u> Specified Volumes	=	_____ Gals. Calculated Volume
---	---	---------------------------------------	---	----------------------------------

Time	Temp (°F)	pH	Conductivity (mS or µS)	Gals. Removed	Observations
			<u>No SPH detected</u>		

Did well dewater? Yes No 	Gallons actually evacuated:
Sampling Time: 	Sampling Date:
Sample I.D.: 	Laboratory: Pace Sequoia Other:
Analyzed for: GRO BTEX MTBE DAO Other: 	
D.O. (if req'd):	Pre-purge: _____ mg/L Post-purge: _____ mg/L
O.R.P. (if req'd):	Pre-purge: _____ mV Post-purge: _____ mV

ARCO / BP WELL MONITORING DATA SHEET

BTS #: <u>050307-DW-3</u>	Station # <u>11132</u>
Sampler: <u>DW</u>	Date: <u>3-7-05</u>
Well I.D.: <u>MW-9</u>	Well Diameter: <u>2</u> 3 4 6 8 _____
Total Well Depth: <u>—</u>	Depth to Water: <u>9.76</u>
Depth to Free Product:	Thickness of Free Product (feet):
Referenced to: <u>PVC</u> Grade	D.O. Meter (if req'd): YSI HACH

Well Diameter	Multplier	Well Diameter	Multplier
1"	0.04	4"	0.65
2"	0.16	6"	1.47
3"	0.37	Other	radius ² * 0.163

Purge Method: Bailer Disposable Bailer Positive Air Displacement Electric Submersible Extraction Pump Other: _____	Sampling Method: Bailer Disposable Bailer Extraction Port Other: _____
--	--

Top of Screen: _____ If well is listed as a no-purge, confirm that water level is below the top of screen. Otherwise, the well must be purged.

_____ 1 Case Volume (Gals.)	X	check SPH Specified Volumes	=	_____ Gals. Calculated Volume
---	---	---	---	----------------------------------

Time	Temp (°F)	pH	Conductivity (mS or µS)	Gals. Removed	Observations
		<u>No</u>	<u>SPH detected</u>		

Did well dewater? Yes No	Gallons actually evacuated: _____
Sampling Time: _____	Sampling Date: _____
Sample I.D.: _____	Laboratory: Pace Sequoia Other: _____
Analyzed for: GRO BTEX MTBE DRO Other: _____	
D.O. (if req'd): _____	Pre-purge: _____ mg/L Post-purge: _____ mg/L
O.R.P. (if req'd): _____	Pre-purge: _____ mV Post-purge: _____ mV

ARCO / BP WELL MONITORING DATA SHEET

BTS #: <u>050307-DW-3</u>	Station # <u>11132</u>
Sampler: <u>DW</u>	Date: <u>3-7-05</u>
Well I.D.: <u>MW-10</u>	Well Diameter: <u>(2)</u> 3 4 6 8 _____
Total Well Depth: <u>-</u>	Depth to Water: <u>11.30</u>
Depth to Free Product:	Thickness of Free Product (feet):
Referenced to: <u>PVC</u> Grade	D.O. Meter (if req'd): YSI HACH

Well Diameter	Multiplier	Well Diameter	Multiplier
1"	0.04	4"	0.65
2"	0.16	6"	1.47
3"	0.37	Other	radius ² * 0.163

Purge Method: ~~Bailer~~
 ~~Disposable Bailer~~
 ~~Positive Air Displacement~~
 ~~Electric Submersible~~
 ~~Extraction Pump~~
 Other: _____

Sampling Method: ~~Bailer~~
 ~~Disposable Bailer~~
 ~~Extraction Port~~
 Other: _____

Top of Screen: _____ If well is listed as a no-purge, confirm that water level is below the top of screen. Otherwise, the well must be purged.

_____	X	<u>check SPH</u>	=	_____ Gals.
1 Case Volume (Gals.)		Specified Volumes		Calculated Volume

Time	Temp (°F)	pH	Conductivity (mS or µS)	Gals. Removed	Observations
		<u>No</u>	<u>SPH detected</u>		

Did well dewater? Yes No Gallons actually evacuated: _____

Sampling Time: _____ Sampling Date: _____

Sample I.D.: _____ Laboratory: Pace Sequoia Other _____

Analyzed for: GRO BTEX MTBE DRO Other: _____

D.O. (if req'd):	Pre-purge:	mg/L	Post-purge:	mg/L
O.R.P. (if req'd):	Pre-purge:	mV	Post-purge:	mV

ARCO / BP WELL MONITORING DATA SHEET

BTS #: <u>050307-DW-3</u>	Station # <u>11132</u>
Sampler: <u>DW</u>	Date: <u>3-7-05</u>
Well I.D.: <u>RW-1</u>	Well Diameter: 2 3 4 <u>6</u> 8
Total Well Depth: <u>-</u>	Depth to Water: <u>11.90</u>
Depth to Free Product: <u>16.88</u>	Thickness of Free Product (feet): <u>.02</u>
Referenced to: <u>PVC</u> Grade	D.O. Meter (if req'd): YSI HACH

Well Diameter	Multiplier	Well Diameter	Multiplier
1"	0.04	4"	0.65
2"	0.16	6"	1.47
3"	0.37	Other	radius ² * 0.163

Purge Method: Bailer Disposable Bailer Positive Air Displacement Electric Submersible Extraction Pump Other: _____

Sampling Method: Bailer Disposable Bailer Extraction Port Other: _____

Top of Screen: _____ If well is listed as a no-purge, confirm that water level is below the top of screen. Otherwise, the well must be purged.

<input checked="" type="checkbox"/> <u>check SPH</u> I Case Volume (Gals.)	X	Specified Volumes	=	Gals. Calculated Volume
---	---	-------------------	---	----------------------------

Time	Temp (°F)	pH	Conductivity (mS or µS)	Gals. Removed	Observations
					<u>Bailed 2 11 ml SPH from well</u>

Did well dewater? Yes No Gallons actually evacuated: _____

Sampling Time: _____ Sampling Date: _____

Sample I.D.: _____ Laboratory: Pace Sequoia Other: _____

Analyzed for: GRO BTEX MTBE DRO Other: _____

D.O. (if req'd):	Pre-purge:	mg/L	Post-purge:	mg/L
O.R.P. (if req'd):	Pre-purge:	mV	Post-purge:	mV

ATTACHMENT B

**LABORATORY PROCEDURES,
CERTIFIED ANALYTICAL REPORTS,
AND CHAIN-OF-CUSTODY RECORDS**

LABORATORY PROCEDURES

Laboratory Procedures

The groundwater samples were analyzed for the presence of the chemicals mentioned in the chain of custody using standard EPA methods. The methods of analysis for the groundwater samples are documented in the certified analytical report. The certified analytical reports and chain-of-custody record are presented in this attachment. The analytical data provided by the laboratory approved by RM have been reviewed and verified by that laboratory.



2 March, 2005

Lynelle Onishi
URS Corporation [Arco]
1333 Broadway, Suite 800
Oakland, CA 94612

RE: BP Heritage #11132, Oakland, CA
Work Order: MOB0501

Enclosed are the results of analyses for samples received by the laboratory on 02/16/05 18:15. If you have any questions concerning this report, please feel free to contact me.

Sincerely,

Lisa Race
Senior Project Manager

CA ELAP Certificate #1210

URS Corporation [Arco]
 1333 Broadway, Suite 800
 Oakland CA, 94612

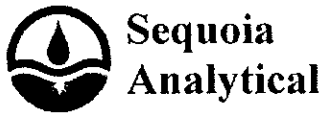
 Project:BP Heritage #11132, Oakland, CA
 Project Number:G07TS-0016
 Project Manager:Lynelle Onishi

 MOB0501
 Reported:
 03/02/05 18:11

ANALYTICAL REPORT FOR SAMPLES

Sample ID	Laboratory ID	Matrix	Date Sampled	Date Received
MW-2	MOB0501-01	Water	02/15/05 14:41	02/16/05 18:15
MW-3	MOB0501-02	Water	02/15/05 11:42	02/16/05 18:15
MW-4	MOB0501-03	Water	02/15/05 11:09	02/16/05 18:15
MW-5	MOB0501-04	Water	02/15/05 13:20	02/16/05 18:15
MW-8	MOB0501-05	Water	02/15/05 12:47	02/16/05 18:15
MW-9	MOB0501-06	Water	02/15/05 12:12	02/16/05 18:15
MW-10	MOB0501-07	Water	02/15/05 13:59	02/16/05 18:15
TB-11132-21505	MOB0501-08	Water	02/15/05 00:00	02/16/05 18:15

The carbon range for the TPH-GRO has been changed from C6-C10 to C4-C12. The carbon range for TPH-DRO has been changed from C10-C28 to C10-C36. EPA 8015B has been modified to better meet the requirements of California regulatory agencies. These samples were received with no custody seals.



URS Corporation [Arco] 1333 Broadway, Suite 800 Oakland CA, 94612	Project:BP Heritage #11132, Oakland, CA Project Number:G07TS-0016 Project Manager:Lynelle Onishi	MOB0501 Reported: 03/02/05 18:11
---	--	--

Volatile Organic Compounds by EPA Method 8260B
Sequoia Analytical - Morgan Hill

Analyte	Result	Reporting Limit	Units	Dilution	Batch	Prepared	Analyzed	Method	Notes
---------	--------	-----------------	-------	----------	-------	----------	----------	--------	-------

MW-2 (MOB0501-01RE1) Water Sampled: 02/15/05 14:41 Received: 02/16/05 18:15

tert-Amyl methyl ether	ND	100	ug/l	200	5B25005	02/25/05	02/26/05	EPA 8260B	
Benzene	11000	100	"	"	"	"	"	"	
tert-Butyl alcohol	ND	4000	"	"	"	"	"	"	
Di-isopropyl ether	ND	100	"	"	"	"	"	"	
1,2-Dibromoethane (EDB)	ND	100	"	"	"	"	"	"	
1,2-Dichloroethane	ND	100	"	"	"	"	"	"	
Ethanol	ND	20000	"	"	"	"	"	"	
Ethyl tert-butyl ether	ND	100	"	"	"	"	"	"	
Ethylbenzene	3000	100	"	"	"	"	"	"	
Methyl tert-butyl ether	690	100	"	"	"	"	"	"	
Toluene	4200	100	"	"	"	"	"	"	
Xylenes (total)	11000	100	"	"	"	"	"	"	
Gasoline Range Organics (C4-C12)	67000	10000	"	"	"	"	"	"	

Surrogate: 1,2-Dichloroethane-d4 91 % 60-135 " " " "

MW-3 (MOB0501-02) Water Sampled: 02/15/05 11:42 Received: 02/16/05 18:15

tert-Amyl methyl ether	ND	0.50	ug/l	1	5B24007	02/24/05	02/24/05	EPA 8260B	
Benzene	7.8	0.50	"	"	"	"	"	"	
tert-Butyl alcohol	ND	20	"	"	"	"	"	"	
Di-isopropyl ether	ND	0.50	"	"	"	"	"	"	
1,2-Dibromoethane (EDB)	ND	0.50	"	"	"	"	"	"	
1,2-Dichloroethane	ND	0.50	"	"	"	"	"	"	
Ethanol	ND	100	"	"	"	"	"	"	
Ethyl tert-butyl ether	ND	0.50	"	"	"	"	"	"	
Ethylbenzene	9.2	0.50	"	"	"	"	"	"	
Methyl tert-butyl ether	1.7	0.50	"	"	"	"	"	"	
Toluene	1.8	0.50	"	"	"	"	"	"	
Xylenes (total)	9.6	0.50	"	"	"	"	"	"	
Gasoline Range Organics (C4-C12)	500	50	"	"	"	"	"	"	

Surrogate: 1,2-Dichloroethane-d4 102 % 60-135 " " " "

URS Corporation [Arco]
 1333 Broadway, Suite 800
 Oakland CA, 94612

 Project:BP Heritage #11132, Oakland, CA
 Project Number:G07TS-0016
 Project Manager:Lynelle Onishi

 MOB0501
 Reported:
 03/02/05 18:11

Volatile Organic Compounds by EPA Method 8260B
Sequoia Analytical - Morgan Hill

Analyte	Result	Reporting Limit	Units	Dilution	Batch	Prepared	Analyzed	Method	Notes
MW-4 (MOB0501-03) Water Sampled: 02/15/05 11:09 Received: 02/16/05 18:15									
tert-Amyl methyl ether	ND	0.50	ug/l	1	5B24007	02/24/05	02/24/05	EPA 8260B	
Benzene	ND	0.50	"	"	"	"	"	"	
tert-Butyl alcohol	ND	20	"	"	"	"	"	"	
Di-isopropyl ether	ND	0.50	"	"	"	"	"	"	
1,2-Dibromoethane (EDB)	ND	0.50	"	"	"	"	"	"	
1,2-Dichloroethane	ND	0.50	"	"	"	"	"	"	
Ethanol	ND	100	"	"	"	"	"	"	
Ethyl tert-butyl ether	ND	0.50	"	"	"	"	"	"	
Ethylbenzene	ND	0.50	"	"	"	"	"	"	
Methyl tert-butyl ether	62	0.50	"	"	"	"	"	"	
Toluene	ND	0.50	"	"	"	"	"	"	
Xylenes (total)	ND	0.50	"	"	"	"	"	"	
Gasoline Range Organics (C4-C12)	ND	50	"	"	"	"	"	"	
<i>Surrogate: 1,2-Dichloroethane-d4</i>		102 %	60-135	"	"	"	"	"	
MW-5 (MOB0501-04) Water Sampled: 02/15/05 13:20 Received: 02/16/05 18:15									
tert-Amyl methyl ether	ND	5.0	ug/l	10	5B25005	02/25/05	02/26/05	EPA 8260B	
Benzene	330	5.0	"	"	"	"	"	"	
tert-Butyl alcohol	ND	200	"	"	"	"	"	"	
Di-isopropyl ether	ND	5.0	"	"	"	"	"	"	
1,2-Dibromoethane (EDB)	ND	5.0	"	"	"	"	"	"	
1,2-Dichloroethane	ND	5.0	"	"	"	"	"	"	
Ethanol	ND	1000	"	"	"	"	"	"	
Ethyl tert-butyl ether	ND	5.0	"	"	"	"	"	"	
Ethylbenzene	37	5.0	"	"	"	"	"	"	
Methyl tert-butyl ether	260	5.0	"	"	"	"	"	"	
Toluene	8.0	5.0	"	"	"	"	"	"	
Xylenes (total)	67	5.0	"	"	"	"	"	"	
Gasoline Range Organics (C4-C12)	1600	500	"	"	"	"	"	"	
<i>Surrogate: 1,2-Dichloroethane-d4</i>		88 %	60-135	"	"	"	"	"	

URS Corporation [Arco]
 1333 Broadway, Suite 800
 Oakland CA, 94612

 Project:BP Heritage #11132, Oakland, CA
 Project Number:G07TS-0016
 Project Manager:Lynelle Onishi

 MOB0501
 Reported:
 03/02/05 18:11

Volatile Organic Compounds by EPA Method 8260B
Sequoia Analytical - Morgan Hill

Analyte	Result	Reporting Limit	Units	Dilution	Batch	Prepared	Analyzed	Method	Notes
MW-8 (MOB0501-05) Water Sampled: 02/15/05 12:47 Received: 02/16/05 18:15									
tert-Amyl methyl ether	ND	50	ug/l	100	5B25005	02/25/05	02/26/05	EPA 8260B	
Benzene	1300	50	"	"	"	"	"	"	
tert-Butyl alcohol	ND	2000	"	"	"	"	"	"	
Di-isopropyl ether	ND	50	"	"	"	"	"	"	
1,2-Dibromoethane (EDB)	ND	50	"	"	"	"	"	"	
1,2-Dichloroethane	ND	50	"	"	"	"	"	"	
Ethanol	ND	10000	"	"	"	"	"	"	
Ethyl tert-butyl ether	ND	50	"	"	"	"	"	"	
Ethylbenzene	2300	50	"	"	"	"	"	"	
Methyl tert-butyl ether	ND	50	"	"	"	"	"	"	
Toluene	390	50	"	"	"	"	"	"	
Xylenes (total)	7900	50	"	"	"	"	"	"	
Gasoline Range Organics (C4-C12)	38000	5000	"	"	"	"	"	"	
<i>Surrogate: 1,2-Dichloroethane-d4</i>		89 %	60-135	"	"	"	"	"	
MW-9 (MOB0501-06) Water Sampled: 02/15/05 12:12 Received: 02/16/05 18:15									
tert-Amyl methyl ether	ND	50	ug/l	100	5B24007	02/24/05	02/24/05	EPA 8260B	
Benzene	200	50	"	"	"	"	"	"	
tert-Butyl alcohol	ND	2000	"	"	"	"	"	"	
Di-isopropyl ether	ND	50	"	"	"	"	"	"	
1,2-Dibromoethane (EDB)	ND	50	"	"	"	"	"	"	
1,2-Dichloroethane	ND	50	"	"	"	"	"	"	
Ethanol	ND	10000	"	"	"	"	"	"	
Ethyl tert-butyl ether	ND	50	"	"	"	"	"	"	
Ethylbenzene	720	50	"	"	"	"	"	"	
Methyl tert-butyl ether	ND	50	"	"	"	"	"	"	
Toluene	ND	50	"	"	"	"	"	"	
Xylenes (total)	2000	50	"	"	"	"	"	"	
Gasoline Range Organics (C4-C12)	19000	5000	"	"	"	"	"	"	
<i>Surrogate: 1,2-Dichloroethane-d4</i>		89 %	60-135	"	"	"	"	"	

URS Corporation [Arco]
1333 Broadway, Suite 800
Oakland CA, 94612

Project:BP Heritage #11132, Oakland, CA
Project Number:G07TS-0016
Project Manager:Lynelle Onishi

MOB0501
Reported:
03/02/05 18:11

**Volatile Organic Compounds by EPA Method 8260B
Sequoia Analytical - Morgan Hill**

Analyte	Result	Reporting Limit	Units	Dilution	Batch	Prepared	Analyzed	Method	Notes
MW-10 (MOB0501-07) Water Sampled: 02/15/05 13:59 Received: 02/16/05 18:15									
tert-Amyl methyl ether	ND	50	ug/l	100	5B24007	02/24/05	02/24/05	EPA 8260B	
Benzene	510	50	"	"	"	"	"	"	
tert-Butyl alcohol	ND	2000	"	"	"	"	"	"	
Di-isopropyl ether	ND	50	"	"	"	"	"	"	
1,2-Dibromoethane (EDB)	ND	50	"	"	"	"	"	"	
1,2-Dichloroethane	ND	50	"	"	"	"	"	"	
Ethanol	ND	10000	"	"	"	"	"	"	
Ethyl tert-butyl ether	ND	50	"	"	"	"	"	"	
Ethylbenzene	1800	50	"	"	"	"	"	"	
Methyl tert-butyl ether	77	50	"	"	"	"	"	"	
Toluene	330	50	"	"	"	"	"	"	
Xylenes (total)	7200	50	"	"	"	"	"	"	
Gasoline Range Organics (C4-C12)	30000	5000	"	"	"	"	"	"	
<i>Surrogate: 1,2-Dichloroethane-d4</i>		91 %		60-135	"	"	"	"	

URS Corporation [Arco]
 1333 Broadway, Suite 800
 Oakland CA, 94612

 Project:BP Heritage #11132, Oakland, CA
 Project Number:G07TS-0016
 Project Manager:Lynelle Onishi

 MOB0501
 Reported:
 03/02/05 18:11

Volatile Organic Compounds by EPA Method 8260B - Quality Control
Sequoia Analytical - Morgan Hill

Analyte	Result	Reporting Limit	Units	Spike Level	Source Result	%REC	%REC Limits	RPD	RPD Limit	Notes
---------	--------	-----------------	-------	-------------	---------------	------	-------------	-----	-----------	-------

Batch 5B24007 - EPA 5030B P/T / EPA 8260B
Blank (5B24007-BLK1)

Prepared & Analyzed: 02/24/05

tert-Amyl methyl ether	ND	0.50	ug/l							
Benzene	ND	0.50	"							
tert-Butyl alcohol	ND	20	"							
Di-isopropyl ether	ND	0.50	"							
1,2-Dibromoethane (EDB)	ND	0.50	"							
1,2-Dichloroethane	ND	0.50	"							
Ethanol	ND	100	"							
Ethyl tert-butyl ether	ND	0.50	"							
Ethylbenzene	ND	0.50	"							
Methyl tert-butyl ether	ND	0.50	"							
Toluene	ND	0.50	"							
Xylenes (total)	ND	0.50	"							
Gasoline Range Organics (C4-C12)	ND	50	"							
<i>Surrogate: 1,2-Dichloroethane-d4</i>	2.45		"	2.50		98	60-135			

Laboratory Control Sample (5B24007-BS1)

Prepared & Analyzed: 02/24/05

tert-Amyl methyl ether	12.0	0.50	ug/l	10.0		120	80-115			HL
Benzene	11.7	0.50	"	10.0		117	65-115			HL
tert-Butyl alcohol	44.8	20	"	50.0		90	75-150			
Di-isopropyl ether	11.9	0.50	"	10.0		119	75-125			
1,2-Dibromoethane (EDB)	10.7	0.50	"	10.0		107	85-120			
1,2-Dichloroethane	11.5	0.50	"	10.0		115	85-130			
Ethanol	164	100	"	200		82	70-135			
Ethyl tert-butyl ether	11.8	0.50	"	10.0		118	75-130			
Ethylbenzene	10.6	0.50	"	10.0		106	75-135			
Methyl tert-butyl ether	12.3	0.50	"	10.0		123	65-125			
Toluene	11.0	0.50	"	10.0		110	85-120			
Xylenes (total)	30.8	0.50	"	30.0		103	85-125			
<i>Surrogate: 1,2-Dichloroethane-d4</i>	2.62		"	2.50		105	60-135			

URS Corporation [Arco]
 1333 Broadway, Suite 800
 Oakland CA, 94612

 Project:BP Heritage #11132, Oakland, CA
 Project Number:G07TS-0016
 Project Manager:Lynelle Onishi

 MOB0501
 Reported:
 03/02/05 18:11

Volatile Organic Compounds by EPA Method 8260B - Quality Control
Sequoia Analytical - Morgan Hill

Analyte	Result	Reporting Limit	Units	Spike Level	Source Result	%REC	%REC Limits	RPD	RPD Limit	Notes
Batch 5B24007 - EPA 5030B P/T / EPA 8260B										
Laboratory Control Sample (5B24007-BS2)										
Prepared & Analyzed: 02/24/05										
Benzene	6.24	0.50	ug/l	6.08		103	65-115			
Ethylbenzene	8.07	0.50	"	7.84		103	75-135			
Methyl tert-butyl ether	9.48	0.50	"	9.60		99	65-125			
Toluene	35.6	0.50	"	32.9		108	85-120			
Xylenes (total)	39.4	0.50	"	38.5		102	85-125			
Gasoline Range Organics (C4-C12)	450	50	"	440		102	70-124			
Surrogate: 1,2-Dichloroethane-d4	2.61		"	2.50		104	60-135			
Laboratory Control Sample Dup (5B24007-BSD1)										
Prepared & Analyzed: 02/24/05										
tert-Amyl methyl ether	11.9	0.50	ug/l	10.0		119	80-115	0.8	15	HL
Benzene	11.1	0.50	"	10.0		111	65-115	5	20	
tert-Butyl alcohol	40.9	20	"	50.0		82	75-150	9	25	
Di-isopropyl ether	11.4	0.50	"	10.0		114	75-125	4	15	
1,2-Dibromoethane (EDB)	10.5	0.50	"	10.0		105	85-120	2	15	
1,2-Dichloroethane	10.6	0.50	"	10.0		106	85-130	8	20	
Ethanol	151	100	"	200		76	70-135	8	35	
Ethyl tert-butyl ether	11.3	0.50	"	10.0		113	75-130	4	25	
Ethylbenzene	10.1	0.50	"	10.0		101	75-135	5	15	
Methyl tert-butyl ether	12.2	0.50	"	10.0		122	65-125	0.8	20	
Toluene	10.4	0.50	"	10.0		104	85-120	6	20	
Xylenes (total)	29.5	0.50	"	30.0		98	85-125	4	20	
Surrogate: 1,2-Dichloroethane-d4	2.57		"	2.50		103	60-135			
Matrix Spike (5B24007-MS1)										
Source: MOB0501-01 Prepared & Analyzed: 02/24/05										
Benzene	12000	50	ug/l	608	12000	0	65-115			BB,LN
Ethylbenzene	3650	50	"	784	3000	83	75-135			
Methyl tert-butyl ether	1300	50	"	960	590	74	65-125			
Toluene	7700	50	"	3290	4500	97	85-120			
Xylenes (total)	13000	50	"	3850	11000	52	85-125			LN
Gasoline Range Organics (C4-C12)	98900	5000	"	44000	63000	82	70-124			
Surrogate: 1,2-Dichloroethane-d4	2.32		"	2.50		93	60-135			

Sequoia Analytical - Morgan Hill

The results in this report apply to the samples analyzed in accordance with the chain of custody document. Unless otherwise stated, results are reported on a wet weight basis. This analytical report must be reproduced in its entirety.

URS Corporation [Arco]
1333 Broadway, Suite 800
Oakland CA, 94612

Project:BP Heritage #11132, Oakland, CA
Project Number:G07TS-0016
Project Manager:Lynelle Onishi

MOB0501
Reported:
03/02/05 18:11

Volatile Organic Compounds by EPA Method 8260B - Quality Control
Sequoia Analytical - Morgan Hill

Analyte	Result	Reporting Limit	Units	Spike Level	Source Result	%REC	%REC Limits	RPD	RPD Limit	Notes
---------	--------	--------------------	-------	----------------	------------------	------	----------------	-----	--------------	-------

Batch 5B24007 - EPA 5030B P/T / EPA 8260B

Matrix Spike Dup (5B24007-MSD1)	Source: MOB0501-01	Prepared & Analyzed: 02/24/05								
Benzene	11100	50	ug/l	608	12000	NR	65-115	8	20	BB, LN
Ethylbenzene	3450	50	"	784	3000	57	75-135	6	15	LN
Methyl tert-butyl ether	1220	50	"	960	590	66	65-125	6	20	
Toluene	7200	50	"	3290	4500	82	85-120	7	20	LN
Xylenes (total)	12200	50	"	3850	11000	31	85-125	6	20	LN
Gasoline Range Organics (C4-C12)	92400	5000	"	44000	63000	67	70-124	7	20	LN
Surrogate: 1,2-Dichloroethane-d4	2.18		"	2.50		87	60-135			

Batch 5B25005 - EPA 5030B P/T / EPA 8260B

Blank (5B25005-BLK1)	Prepared & Analyzed: 02/25/05									
tert-Amyl methyl ether	ND	0.50	ug/l							
Benzene	ND	0.50	"							
tert-Butyl alcohol	ND	5.0	"							
Di-isopropyl ether	ND	0.50	"							
1,2-Dibromoethane (EDB)	ND	0.50	"							
1,2-Dichloroethane	ND	0.50	"							
Ethanol	ND	100	"							
Ethyl tert-butyl ether	ND	0.50	"							
Ethylbenzene	ND	0.50	"							
Methyl tert-butyl ether	ND	0.50	"							
Toluene	ND	0.50	"							
Xylenes (total)	ND	0.50	"							
Gasoline Range Organics (C4-C12)	ND	50	"							
Surrogate: 1,2-Dichloroethane-d4	4.38		"	5.00		88	60-135			

Laboratory Control Sample (5B25005-BS1)

Laboratory Control Sample (5B25005-BS1)	Prepared & Analyzed: 02/25/05									
tert-Amyl methyl ether	10.7	0.50	ug/l	10.0		107	80-115			
Benzene	9.98	0.50	"	10.0		100	65-115			
tert-Butyl alcohol	49.2	5.0	"	50.0		98	75-150			
Di-isopropyl ether	11.5	0.50	"	10.0		115	75-125			
1,2-Dibromoethane (EDB)	9.83	0.50	"	10.0		98	85-120			
1,2-Dichloroethane	10.8	0.50	"	10.0		108	85-130			
Ethanol	217	100	"	200		108	70-135			
Ethyl tert-butyl ether	11.4	0.50	"	10.0		114	75-130			
Ethylbenzene	9.83	0.50	"	10.0		98	75-135			
Methyl tert-butyl ether	11.1	0.50	"	10.0		111	65-125			

Sequoia Analytical - Morgan Hill

The results in this report apply to the samples analyzed in accordance with the chain of custody document. Unless otherwise stated, results are reported on a wet weight basis. This analytical report must be reproduced in its entirety.

URS Corporation [Arco]
 1333 Broadway, Suite 800
 Oakland CA, 94612

 Project:BP Heritage #11132, Oakland, CA
 Project Number:G07TS-0016
 Project Manager:Lynelle Onishi

 MOB0501
 Reported:
 03/02/05 18:11

Volatile Organic Compounds by EPA Method 8260B - Quality Control
Sequoia Analytical - Morgan Hill

Analyte	Result	Reporting Limit	Units	Spike Level	Source Result	%REC	%REC Limits	RPD	RPD Limit	Notes
---------	--------	-----------------	-------	-------------	---------------	------	-------------	-----	-----------	-------

Batch 5B25005 - EPA 5030B P/T / EPA 8260B
Laboratory Control Sample (5B25005-BS1)

Prepared & Analyzed: 02/25/05

Toluene	9.65	0.50	ug/l	10.0		96	85-120			
Xylenes (total)	30.4	0.50	"	30.0		101	85-125			
Surrogate: 1,2-Dichloroethane-d4	4.60		"	5.00		92	60-135			

Laboratory Control Sample (5B25005-BS2)

Prepared & Analyzed: 02/25/05

Benzene	5.57	0.50	ug/l	6.40		87	65-115			
Ethylbenzene	7.86	0.50	"	7.52		105	75-135			
Methyl tert-butyl ether	9.32	0.50	"	9.92		94	65-125			
Toluene	31.8	0.50	"	31.9		100	85-120			
Xylenes (total)	41.1	0.50	"	36.6		112	85-125			
Gasoline Range Organics (C4-C12)	413	50	"	440		94	70-124			
Surrogate: 1,2-Dichloroethane-d4	4.57		"	5.00		91	60-135			

Laboratory Control Sample Dup (5B25005-BSD1)

Prepared & Analyzed: 02/25/05

tert-Amyl methyl ether	11.5	0.50	ug/l	10.0		115	80-115	7	15	
Benzene	10.6	0.50	"	10.0		106	65-115	6	20	
tert-Butyl alcohol	51.4	5.0	"	50.0		103	75-150	4	25	
Di-isopropyl ether	12.1	0.50	"	10.0		121	75-125	5	15	
1,2-Dibromoethane (EDB)	10.3	0.50	"	10.0		103	85-120	5	15	
1,2-Dichloroethane	11.7	0.50	"	10.0		117	85-130	8	20	
Ethanol	221	100	"	200		110	70-135	2	35	
Ethyl tert-butyl ether	11.9	0.50	"	10.0		119	75-130	4	25	
Ethylbenzene	10.7	0.50	"	10.0		107	75-135	8	15	
Methyl tert-butyl ether	11.7	0.50	"	10.0		117	65-125	5	20	
Toluene	10.4	0.50	"	10.0		104	85-120	7	20	
Xylenes (total)	32.7	0.50	"	30.0		109	85-125	7	20	
Surrogate: 1,2-Dichloroethane-d4	4.79		"	5.00		96	60-135			

Sequoia Analytical - Morgan Hill

The results in this report apply to the samples analyzed in accordance with the chain of custody document. Unless otherwise stated, results are reported on a wet weight basis. This analytical report must be reproduced in its entirety.

URS Corporation [Arco]
1333 Broadway, Suite 800
Oakland CA, 94612

Project:BP Heritage #11132, Oakland, CA
Project Number:G07TS-0016
Project Manager:Lynelle Onishi

MOB0501
Reported:
03/02/05 18:11

**Volatile Organic Compounds by EPA Method 8260B - Quality Control
Sequoia Analytical - Morgan Hill**

Analyte	Result	Reporting Limit	Units	Spike Level	Source Result	%REC	%REC Limits	RPD	RPD Limit	Notes
---------	--------	--------------------	-------	----------------	------------------	------	----------------	-----	--------------	-------

Batch 5B25005 - EPA 5030B P/T / EPA 8260B

Matrix Spike (5B25005-MS1)	Source: MOB0502-03			Prepared & Analyzed: 02/25/05						
Benzene	1510	50	ug/l	640	980	83	65-115			
Ethylbenzene	1770	50	"	752	930	112	75-135			
Methyl tert-butyl ether	6310	50	"	992	5200	112	65-125			
Toluene	3450	50	"	3190	96	105	85-120			
Xylenes (total)	4450	50	"	3660	370	111	85-125			
Gasoline Range Organics (C4-C12)	57300	5000	"	44000	15000	96	70-124			
<i>Surrogate: 1,2-Dichloroethane-d4</i>	<i>4.80</i>		<i>"</i>	<i>5.00</i>		<i>96</i>	<i>60-135</i>			

Matrix Spike Dup (5B25005-MSD1)	Source: MOB0502-03			Prepared & Analyzed: 02/25/05						
Benzene	1470	50	ug/l	640	980	77	65-115	3	20	
Ethylbenzene	1670	50	"	752	930	98	75-135	6	15	
Methyl tert-butyl ether	6000	50	"	992	5200	81	65-125	5	20	
Toluene	3260	50	"	3190	96	99	85-120	6	20	
Xylenes (total)	4410	50	"	3660	370	110	85-125	0.9	20	
Gasoline Range Organics (C4-C12)	54100	5000	"	44000	15000	89	70-124	6	20	
<i>Surrogate: 1,2-Dichloroethane-d4</i>	<i>4.21</i>		<i>"</i>	<i>5.00</i>		<i>84</i>	<i>60-135</i>			

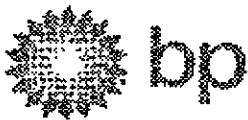
URS Corporation [Arco]
1333 Broadway, Suite 800
Oakland CA, 94612

Project:BP Heritage #11132, Oakland, CA
Project Number:G07TS-0016
Project Manager:Lynelle Onishi

MOB0501
Reported:
03/02/05 18:11

Notes and Definitions

LN MS and/or MSD below acceptance limits. See Blank Spike(LCS).
HL Analyte recovery above established limit
BB, LN Sample > 4x spike concentration.
DET Analyte DETECTED
ND Analyte NOT DETECTED at or above the reporting limit or MDL, if MDL is specified
NR Not Reported
dry Sample results reported on a dry weight basis
RPD Relative Percent Difference



Chain of Custody Record

Project Name: BP 11132 Analytical for QMR sampling
 BP BU/AR Region/Enfos Segment: BP > Americas > West Coast > Relat > WCBU > CA > Central > 11132 > HistoricalPI
 State or Lead Regulatory Agency: Alameda County Environmental Health Agency
 Requested Due Date (mm/dd/yy): 10 Day TAT

On-site Time: 0830 Temp: 51 °F
 Off-site Time: 1630 Temp: 53 °F
 Sky Conditions: cloudy / Rain off & on
 Meteorological Events: Rain
 Wind Speed: 5-10 mph Direction: NE

Lab Name: <u>Sequoia</u>	BP/AR Facility No.: <u>11132</u>	Consultant/Contractor: <u>URS</u>
Address: <u>885 Jarvis Drive</u> <u>Morgan Hill, CA 95037</u>	BP/AR Facility Address: <u>3201 35th Ave, Oakland, CA 94619</u>	Address: <u>1333 Broadway, Suite 800</u> <u>Oakland, CA 94612</u>
Lab PM: <u>Lisa Rao</u>	Site Lat/Long: <u>37.791607 / -122.204</u>	Consultant/Contractor Project No.: <u>38386822</u>
Tele/Fax: <u>408.782.8156 / 408.782.6308</u>	California Global ID No.: <u>T0600100213</u>	Consultant/Contractor PM: <u>Lynelle Onishi</u>
BP/AR PM Contact: <u>Kyle Christie</u>	Enfos Project No.: <u>G071S-0016</u>	Tele/Fax: <u>510.874.1758 / 510.874.3268</u>
Address: <u>4 Centerpointe Dr., LPR-4-172</u> <u>La Palma, CA 90623</u>	Provision or RCOP: <u>Provision</u>	Report Type & QC Level: <u>Level 1 with EDP</u>
Tele/Fax: <u>714.670.5303/714.670.5195</u>	Phase/WBS: <u>04 - Mon/Remed by Natural Attenuation</u>	E-mail EDD To: <u>Donna.Casper@urscorp.com</u>
Lab Bottle Order No:	Sub Phase/Task: <u>03 - Analytical</u>	Invoice to: <u>Allanric Richfield Company</u>
	Cost Element: <u>05 - Subcontracted Costs</u>	

Item No.	Sample Description	Time	Date	Matrix			Laboratory No.	No. of Containers	Preservative					Requested Analysis					Sample Point: <u>11132-21505</u> and Comments
				Soil/Solid	Water/Liquid	Air			Unpreserved	H ₂ SO ₄	HNO ₃	HCl	Methanol	CROBTEX (8260)	SCHEIDT (8260)	SCHEIDT (8260)	SCHEIDT (8260)	SCHEIDT (8260)	
1	MW-2	1441	2/15/05		X		01	2											
2	MW-3	1142					02	1											
3	MW-4	1109					03	1											
4	MW-3	1320					04	1											
5	MW-8B	1247					05	1											
6	MW-9	1212					06	1											
7	MW-10	1359					07	1											
8	TB-11132-21505	--	V	V			08	2											on hold
9																			
10																			

Sampler's Name: <u>Will Crow</u>	Relinquished By / Affiliation	Date	Time	Accepted By / Affiliation	Date	Time
Sampler's Company: <u>Blaine Tech</u>	<u>Will Crow</u>	<u>2/16/05</u>	<u>1815</u>	<u>[Signature]</u>	<u>2/16/05</u>	<u>1130</u>
Shipment Date:	<u>[Signature]</u>	<u>2/16/05</u>	<u>1815</u>	<u>[Signature]</u>	<u>3/18/05</u>	<u>1815</u>
Shipment Method:						
Shipment Tracking No:						

Special Instructions:

Custody Seals In Place Yes No Temp Blank Yes No Cooler Temperature on Receipt No Trip Blank Yes No

SEQUOIA ANALYTICAL SAMPLE RECEIPT LOG

CLIENT NAME: BP 11/32
 REG. BY (PRINT) TD
 WORKORDER: MBB6501

DATE REC'D AT LAB: 2/16/05
 TIME REC'D AT LAB: 1215
 DATE LOGGED IN: 2-18-05

For Regulatory Purposes?
 DRINKING WATER YES/NO NO
 WASTE WATER YES/NO NO

(For clients requiring preservation checks at receipt, document here ↓)

CIRCLE THE APPROPRIATE RESPONSE		LAB SAMPLE #	DASH #	CLIENT ID	CONTAINER DESCRIPTION	PRESERVATIVE	pH	SAMPLE MATRIX	DATE SAMPLED	REMARKS: CONDITION (ETC.)
1. Custody Seal(s) Present / Absent Intact / Broken*	<input checked="" type="radio"/> Present / <input checked="" type="radio"/> Intact	01		MW=2	VOA (3)	HU		W	2/15/05	
2. Chain-of-Custody Present / Absent*	<input checked="" type="radio"/> Present	02		-3						
3. Traffic Reports or Packing List: Present / Absent	<input checked="" type="radio"/> Present	03		-4						
4. Airbill: Airbill / Slicker Present / Absent	<input checked="" type="radio"/> Present	04		-5						
5. Airbill #:		05		-8						
6. Sample Labels: Present / Absent	<input checked="" type="radio"/> Present	06		-9						
7. Sample IDs: Listed / Not Listed on Chain-of-Custody	<input checked="" type="radio"/> Listed	07		TR:1132-21505	(2)					
8. Sample Condition: Intact / Broken* / Leaking*	<input checked="" type="radio"/> Intact									
9. Does information on chain-of-custody, traffic reports and sample labels agree? Yes / No*	<input checked="" type="radio"/> Yes									
10. Sample received within hold time? Yes / No*	<input checked="" type="radio"/> Yes									
11. Adequate sample volume received? Yes / No*	<input checked="" type="radio"/> Yes									
12. Proper Preservatives used? Yes / No*	<input checked="" type="radio"/> Yes									
13. Trip Blank / Temp Blank Received? (circle which, if yes) Yes / No*	<input checked="" type="radio"/> Yes									
14. Temp Rec. at Lab: Is temp 4 ± 2°C? (Acceptance range for samples requiring thermal pres.) Yes / No**	<input checked="" type="radio"/> Yes									
**Exception (if any): METALS / DIFF ON ICE or Problem COC										

*IF CIRCLED, CONTACT PROJECT MANAGER AND ATTACH RECORD OF RESOLUTION.

ATTACHMENT C

**ERROR CHECK REPORTS AND EDF/GEOWELL SUBMITTAL
CONFIRMATIONS**

Electronic Submittal Information

[Main Menu](#) | [View/Add Facilities](#) | [Upload EDD](#) | [Check EDD](#)

SUCCESSFUL GEO_WELL CHECK - NO ERRORS

<u>ORGANIZATION NAME:</u>	URS Corporation-Oakland Office
<u>USER NAME:</u>	URSCORP-OAKLAND
<u>DATE CHECKED:</u>	3/4/2005 10:49:53 AM

Processing is complete. No errors were found!
You may now proceed to the [upload page](#).

[Back to Main Menu](#)

Logged in as URSCORP-OAKLAND (CONTRACTOR)

CONTACT SITE [ADMINISTRATOR](#).

Electronic Submittal Information

[Main Menu](#) | [View/Add Facilities](#) | [Upload EDD](#) | [Check EDD](#)

UPLOADING A GEO_WELL FILE

**Processing is complete. No errors were found!
Your file has been successfully submitted!**

Submittal Title: BP#11132_Geowell 1Q05 QMR

Submittal Date/Time: 3/4/2005 10:51:32 AM

Confirmation Number: 3102416813

[Back to Main Menu](#)

Logged in as URSCORP-OAKLAND
(CONTRACTOR)

CONTACT SITE [ADMINISTRATOR](#).

Electronic Submittal Information

[Main Menu](#) | [View/Add Facilities](#) | [Upload EDD](#) | [Check EDD](#)

SUCCESSFUL EDF CHECK - NO ERRORS

<u>ORGANIZATION NAME:</u>	URS Corporation-Oakland Office
<u>USER NAME:</u>	URSCORP-OAKLAND
<u>DATE CHECKED:</u>	3/4/2005 10:53:09 AM
<u>GLOBAL ID:</u>	T0600100213
<u>FILE UPLOADED:</u>	BP#11132-EDF-MOB0501.zip

No errors were found in your EDF upload file.

If you want to submit this file to the SWRCB, choose the "Upload EDD" option in the above menu and follow the instructions.

When you complete the submittal process, you will be given a confirmation number for your submittal.

Click [here](#) to view the detections report for this upload.

BP 3201 35TH ST OAKLAND, CA 94619	<u>Regional Board - Case #: 01-0227</u> SAN FRANCISCO BAY RWQCB (REGION 2) - (BG) <u>Local Agency (lead agency) - Case #: 3878</u> ALAMEDA COUNTY LOP - (RWS)
--	--

SAMPLE DETECTIONS REPORT

# FIELD POINTS SAMPLED	7
# FIELD POINTS WITH DETECTIONS	7
# FIELD POINTS WITH WATER SAMPLE DETECTIONS ABOVE MCL	6
SAMPLE MATRIX TYPES	WATER

METHOD QA/QC REPORT

METHODS USED	8260FA
TESTED FOR REQUIRED ANALYTES?	N
MISSING PARAMETERS NOT TESTED:	
- 8260FA REQUIRES DBFM TO BE TESTED	
- 8260FA REQUIRES BR4FBZ TO BE TESTED	
- 8260FA REQUIRES BZMED8 TO BE TESTED	
LAB NOTE DATA QUALIFIERS	Y

QA/QC FOR 8021/8260 SERIES SAMPLES

TECHNICAL HOLDING TIME VIOLATIONS	0
METHOD HOLDING TIME VIOLATIONS	0
LAB BLANK DETECTIONS ABOVE REPORTING DETECTION LIMIT	0
LAB BLANK DETECTIONS	0
DO ALL BATCHES WITH THE 8021/8260 SERIES INCLUDE THE FOLLOWING?	
- LAB METHOD BLANK	Y
- MATRIX SPIKE	Y
- MATRIX SPIKE DUPLICATE	Y
- BLANK SPIKE	Y

- SURROGATE SPIKE		Y
<u>WATER SAMPLES FOR 8021/8260 SERIES</u>		
MATRIX SPIKE / MATRIX SPIKE DUPLICATE(S) % RECOVERY BETWEEN 65-135%		Y
MATRIX SPIKE / MATRIX SPIKE DUPLICATE(S) RPD LESS THAN 30%		Y
SURROGATE SPIKES % RECOVERY BETWEEN 85-115%		Y
BLANK SPIKE / BLANK SPIKE DUPLICATES % RECOVERY BETWEEN 70-130%		Y
<u>SOIL SAMPLES FOR 8021/8260 SERIES</u>		
MATRIX SPIKE / MATRIX SPIKE DUPLICATE(S) % RECOVERY BETWEEN 65-135%		n/a
MATRIX SPIKE / MATRIX SPIKE DUPLICATE(S) RPD LESS THAN 30%		n/a
SURROGATE SPIKES % RECOVERY BETWEEN 70-125%		n/a
BLANK SPIKE / BLANK SPIKE DUPLICATES % RECOVERY BETWEEN 70-130%		n/a
<u>FIELD QC SAMPLES</u>		
<u>SAMPLE</u>	<u>COLLECTED</u>	<u>DETECTIONS > REPD</u>
QCTB SAMPLES	N	0
QCEB SAMPLES	N	0
QCAB SAMPLES	N	0

Logged in as URSCORP-OAKLAND (CONTRACTOR)

CONTACT SITE ADMINISTRATOR.



Electronic Submittal Information

[Main Menu](#) |
 [View/Add Facilities](#) |
 [Upload EDD](#) |
 [Check EDD](#)

Your EDF file has been successfully uploaded!

Confirmation Number: 1673571348
Date/Time of Submittal: 3/4/2005 10:54:18 AM
Facility Global ID: T0600100213
Facility Name: BP
Submittal Title: BP 11132-GWM Report 1Q05
Submittal Type: GW Monitoring Report

Click [here](#) to view the detections report for this upload.

BP 3201 35TH ST OAKLAND, CA 94619	Regional Board - Case #: 01-0227 SAN FRANCISCO BAY RWQCB (REGION 2) - (BG) Local Agency (lead agency) - Case #: 3878 ALAMEDA COUNTY LOP - (RWS)
--	--

CONF #	TITLE	QUARTER
1673571348	BP 11132-GWM Report 1Q05	Q1 2005
SUBMITTED BY	SUBMIT DATE	STATUS
Srijesh Thapa	3/4/2005	PENDING REVIEW

SAMPLE DETECTIONS REPORT

FIELD POINTS SAMPLED	7
FIELD POINTS WITH DETECTIONS	7
# FIELD POINTS WITH WATER SAMPLE DETECTIONS ABOVE MCL	6
SAMPLE MATRIX TYPES	WATER

METHOD QA/QC REPORT

METHODS USED	8260FA
TESTED FOR REQUIRED ANALYTES?	N
MISSING PARAMETERS NOT TESTED:	
- 8260FA REQUIRES DBFM TO BE TESTED	
- 8260FA REQUIRES BR4FBZ TO BE TESTED	
- 8260FA REQUIRES BZMED8 TO BE TESTED	
LAB NOTE DATA QUALIFIERS	Y

QA/QC FOR 8021/8260 SERIES SAMPLES

TECHNICAL HOLDING TIME VIOLATIONS	0
METHOD HOLDING TIME VIOLATIONS	0
LAB BLANK DETECTIONS ABOVE REPORTING DETECTION LIMIT	0
LAB BLANK DETECTIONS	0
DO ALL BATCHES WITH THE 8021/8260 SERIES INCLUDE THE FOLLOWING?	
- LAB METHOD BLANK	Y
- MATRIX SPIKE	Y
- MATRIX SPIKE DUPLICATE	Y
- BLANK SPIKE	Y
- SURROGATE SPIKE	Y

WATER SAMPLES FOR 8021/8260 SERIES

MATRIX SPIKE / MATRIX SPIKE DUPLICATE(S) % RECOVERY BETWEEN 65-135%	Y
---	---

MATRIX SPIKE / MATRIX SPIKE DUPLICATE(S) RPD LESS THAN 30%	Y
SURROGATE SPIKES % RECOVERY BETWEEN 85-115%	Y
BLANK SPIKE / BLANK SPIKE DUPLICATES % RECOVERY BETWEEN 70-130%	Y

SOIL SAMPLES FOR 8021/8260 SERIES

MATRIX SPIKE / MATRIX SPIKE DUPLICATE(S) % RECOVERY BETWEEN 65-135%	n/a
MATRIX SPIKE / MATRIX SPIKE DUPLICATE(S) RPD LESS THAN 30%	n/a
SURROGATE SPIKES % RECOVERY BETWEEN 70-125%	n/a
BLANK SPIKE / BLANK SPIKE DUPLICATES % RECOVERY BETWEEN 70-130%	n/a

FIELD QC SAMPLES

<u>SAMPLE</u>	<u>COLLECTED</u>	<u>DETECTIONS > REPD</u>
QCTB SAMPLES	N	0
QCEB SAMPLES	N	0
QCAB SAMPLES	N	0

Logged in as URSCORP-OAKLAND (CONTRACTOR)

CONTACT SITE ADMINISTRATOR.