

FEB 01 2002

**Quarterly Monitoring Report for  
October 1 through December 31, 2001  
East Baybridge Center  
Emeryville and Oakland, California**

**January 31, 2002  
001-01649-21-002**

Prepared for  
Catellus Development Corporation  
201 Mission Street  
San Francisco, California 94105

 **LFR**  
LEVINE • FRICKE

January 31, 2002

001-01649-21-002

Ms. Susan Hugo  
Alameda County Health Care Services Agency  
1131 Harbor Bay Parkway, Second Floor  
Alameda, California 94502

Ms. Betty Graham  
Regional Water Quality Control Board  
1515 Clay Street, 14th Floor  
Oakland, California 94612

Subject: Quarterly Monitoring Report for October 1 through December 31, 2001, East Baybridge Center, Emeryville and Oakland, California

Dear Ms. Hugo and Ms. Graham:

This report presents the results of quarterly groundwater monitoring by LFR Levine-Fricke (LFR) on behalf of Catellus Development Corporation ("Catellus") for October 1 through December 31, 2001, at the Yerba Buena/East Baybridge Center in Emeryville and Oakland, California ("the Site"). This report presents the analytical results of the samples collected during the fourth quarterly groundwater monitoring event conducted after the groundwater extraction and treatment system (GWETS) was shut down on November 20, 2000.

As agreed during a meeting on November 17, 2000, with representatives of the Regional Water Quality Control Board (RWQCB), Catellus, and LFR, and formally approved in a September 5, 2001 letter from the RWQCB, the GWETS at the Site was shut down on November 20, 2000. The GWETS was shut down to assess the effect of the GWETS on groundwater quality at the Site. Catellus has collected samples from selected groundwater monitoring wells for a period of one year following shutdown of the GWETS.

Groundwater monitoring was conducted in accordance with the schedule presented during the November 17, 2000 meeting and in the semiannual groundwater monitoring report, dated January 31, 2001. As discussed, selected wells were monitored on a quarterly basis (every three months) until November 2001.

Table 1 presents the analytical results of the samples collected from the key wells that were monitored after the shutdown of the GWETS. The wells selected for quarterly monitoring were based on their locations and the historical analytical results of samples collected from the wells. After completion of one year of monitoring, we agreed to evaluate the data to assess any future monitoring schedule.

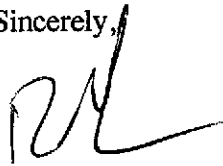
As we discussed, shutting down the GWETS would allow groundwater affected by volatile organic compounds to migrate off site to the west. If 1,1-dichloroethene (1,1-DCE) were detected in samples collected from wells MW-4, MW-5, MW-9, LF-22, or LF-23 at a concentration greater than 165 micrograms per liter ( $\mu\text{g/l}$ ) for two consecutive monitoring events, Catellus agreed to

notify the RWQCB so that together we could evaluate whether the GWETS should be restarted. The concentration of 165  $\mu\text{g}/\text{l}$  for 1,1-DCE was selected because it was one-half of the highest concentration of 1,1-DCE that had been detected in groundwater samples collected at the Site. The highest concentration of 1,1-DCE detected at the Site (330  $\mu\text{g}/\text{l}$ ) was in a sample collected from well MW-6 in September 1996. The proposed target concentration of 165  $\mu\text{g}/\text{l}$  is well below the risk-based screening level of 1,000  $\mu\text{g}/\text{l}$  for 1,1-DCE, which was provided by the RWQCB for groundwater that is not to be used for drinking water.

This monitoring period (October 1 through December 31, 2001) completes the one-year monitoring period following the shut down of the GWETS. The analytical results of the samples collected from wells MW-4, MW-5, MW-9, LF-22, or LF-23 after the GWETS was shut down indicate that concentrations of chemicals in affected groundwater are stable and have not migrated farther off Site. The analytical results for samples collected from wells MW-4, MW-5, MW-9, LF-22, or LF-23 are similar to the results for samples collected in November 2000 when the GWETS was operating. The results for samples collected from these wells are summarized in Table 1 of the enclosed report. Therefore we are requesting that the RWQCB review the groundwater data for this Site. After the RWQCB's review of the data, Catellus would like to receive a letter from the RWQCB stating that no further investigation, remediation, or monitoring of soil or groundwater is warranted.

If you have any questions or comments concerning this report or the project in general, please call me at (510) 652-4500.

Sincerely,



Ron Goloubow  
Senior Geologist

Enclosure

cc: Sandra Stevens, Catellus Development

## CONTENTS

1.0 INTRODUCTION.....	1
2.0 BACKGROUND .....	2
2.1 Areas A and B .....	2
2.2 Area C.....	3
3.0 GROUNDWATER ELEVATIONS AND FLOW DIRECTION.....	3
3.1 Areas A and B .....	3
3.2 Area C.....	4
4.0 GROUNDWATER SAMPLING AND ANALYSIS.....	4
5.0 GROUNDWATER QUALITY .....	4
5.1 Volatile Organic Compounds .....	5
5.2 Total Petroleum Hydrocarbons .....	5
6.0 SUMMARY .....	6
7.0 REQUEST FOR CASE CLOSURE.....	6
REFERENCES .....	8

## TABLES

- 1 Summary of Groundwater Quality Data for Selected Wells
- 2 Well Construction and Groundwater Elevation Data
- 3A Summary of Sampling QA/QC
- 3B Summary of Analytical QA/QC
- 4 Summary of Groundwater Quality Data

## FIGURES

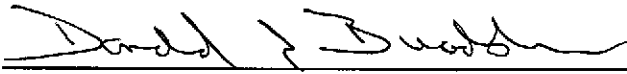
- 1 Site Location Map
- 2 Site Plan Showing Groundwater Elevations in Shallow Wells, December 6, 2001

## APPENDIX

- A Field Procedures

## CERTIFICATION

All hydrogeologic and geologic information, conclusions, and recommendations in this document have been prepared under the supervision of and reviewed by an LFR Levine-Fricke California Registered Geologist.



11/30/02  
Date

Donald T. Bradshaw  
Principal Hydrogeologist  
California Registered Geologist (5300)

## 1.0 INTRODUCTION

This report presents the results of groundwater monitoring by LFR Levine-Fricke (LFR) during the quarterly monitoring period from October 1 through December 31, 2001 ("the reporting quarter") at East Baybridge Center in Emeryville and Oakland, California ("the Site"; Figure 1). LFR is performing groundwater monitoring and submitting this report on behalf of Catellus Development Corporation ("Catellus") in accordance with an April 15, 1998 groundwater monitoring plan submitted to the Alameda County Health Care Services Agency (ACHCSA; LFR 1998).

The Site covers approximately 51 acres, is partially developed, and is undergoing further development. To aid in organizing environmental investigation, remediation, and monitoring, the Site has been divided into Areas A, B, and C (Figure 2).

Quarterly monitoring at the Site includes measuring water levels in accessible wells and collecting groundwater samples from selected wells to assess volatile organic compound (VOC) concentrations in groundwater at the Site. In addition, soil affected with total petroleum hydrocarbons (TPH) has been contained on site beneath building pads, and monitoring data are being collected to assess possible effects on groundwater quality beneath the Site from the contained soil.

As agreed during a meeting on November 17, 2000, with representatives of the Regional Water Quality Control Board (RWQCB), Catellus, and LFR, and formally approved in a September 5, 2001 letter from the RWQCB, the groundwater extraction and treatment system (GWETS) at the Site was shut down on November 20, 2000. The GWETS was shut down to assess the effect of the GWETS on groundwater quality at the Site. Catellus has collected samples from selected groundwater monitoring wells for a period of one year following the shutdown of the GWETS.

This report documents the results of the fourth groundwater monitoring event and completes the one-year monitoring period after the shut down of the GWETS. Based on the analytical results of the samples collected from wells MW-4, MW-5, MW-9, LF-22, or LF-23 after the GWETS was shut down, the plume of affected groundwater is stable and has not migrated farther off site. The analytical results of the samples collected from wells MW-4, MW-5, MW-9, LF-22, or LF-23 are similar to the results of the samples collected in November 2000 when the GWETS was operating. The analytical results of the samples collected from these wells are summarized in Table 1. Therefore we are requesting that the RWQCB review the groundwater data for the Site. After the RWQCB reviews the data, Catellus would like to receive a letter from the RWQCB stating that no further investigation, remediation, or monitoring of soil or groundwater is warranted.

## 2.0 BACKGROUND

From the early 1900s to approximately 1990, the Site was used by a variety of industrial and commercial businesses. These businesses included warehouse storage of predominantly dry goods and limited quantities of hazardous materials (oxides and acids). A complete record of materials stored at the Site is not available. Other former site businesses included metal foundries, truck maintenance and repair, an auto storage and wrecking yard, a construction yard, and several passenger and freight rail lines.

In preparation for site development, LFR began environmental investigations at the Site on behalf of Catellus in September 1989. Site investigation and remediation continued for approximately five years. Results of Phase I and Phase II investigations indicated that VOCs were present in shallow groundwater beneath the Site. During site development, underground storage tanks (USTs) were excavated at several locations across the Site. Groundwater monitoring wells were installed in the vicinity of the former UST locations (Figure 2) to monitor groundwater quality, in accordance with agency guidelines.

### 2.1 Areas A and B

As illustrated on Figure 2, Area A and a portion of Area B have been developed for commercial use, including a large retail store, several smaller retail stores, and two large parking areas. Areas north of the parking lots and west of Emery Street have been developed into apartments.

A groundwater monitoring program was implemented at the Site in January 1992 to monitor VOC concentrations in groundwater in Area A. To reduce the potential for off-site migration of shallow VOC-affected groundwater, a GWETS was installed in Area A (Figure 2). This extraction system began operating in August 1994. LFR presented details regarding the operation of the GWETS in a semiannual self-monitoring report submitted to the East Bay Municipal Utilities District (LFR 2001).

Approximately 25,000 cubic yards of petroleum hydrocarbon-affected soil were excavated from Area B and contained beneath building pads in Areas A and B, in accordance with a containment plan for the Site (LFR 1992a). The removal of soil from this area of the Site was described in LFR's soil remediation report for the Site (LFR 1992b). To assess groundwater quality in Areas A and B, five monitoring wells were installed and sampled on a quarterly basis for over one year. In response to a request from the RWQCB, LFR prepared a soil management plan for the contained soil (LFR 1994). The plan outlined periodic groundwater monitoring to evaluate the possible effects on groundwater from soil contained at the Site.

## 2.2 Area C

Area C (the area west of Hollis Street) has been developed for commercial use, including the construction of three retail stores and large parking areas.

VOCs have been detected in groundwater samples collected in Area C. The distribution of detected VOCs indicates that it is likely that VOCs have migrated from an off-site source. The RWQCB concurs with this conclusion, according to its letter to Catellus and others dated May 11, 1994.

Several USTs were identified at various locations within Area C during environmental investigations and site grading. Groundwater monitoring wells were installed after the excavation of some of the USTs. The groundwater monitoring wells (LF-31 and LF-32, installed at the former Bashland and Bay Area Warehouse properties, respectively) were monitored on a quarterly basis until they were destroyed during site development in June 1994, along with the other wells located west of Hollis Street (except well LF-13).

Replacement wells for those wells (MW-31R and MW-32R) were installed in December 1995. In addition, well MW-12R was installed downgradient from (west of) USTs formerly located along Beach Street to monitor groundwater quality in that area. Wells MW-10R and MW-34R (Figure 2) were installed to monitor possible on-site migration of VOCs from a known source located north of the property.

## 3.0 GROUNDWATER ELEVATIONS AND FLOW DIRECTION

On December 6, 2001, depth to water was measured in accessible on- and off-site groundwater monitoring wells to the nearest 0.01 foot using an electric water-level sounding probe. Table 2 summarizes the depth-to-water and groundwater elevation data collected. Depth to groundwater in shallow wells (less than 25 feet deep) ranged from 5.53 feet below ground surface (bgs) in well MW-10 to 13.63 feet bgs in well MW-9. No water levels were measured in extraction wells.

### 3.1 Areas A and B

Figure 2 is a groundwater elevation contour map illustrating water levels measured on December 6, 2001. As illustrated, the shallow groundwater flow beneath Areas A and B of the Site is toward the west-southwest, in the direction of the groundwater extraction wells (EX-3 and EX-4) and the groundwater collection trench. The hydraulic gradient across this portion of the Site is 0.016 foot per foot (ft/ft), as measured between wells MW-2 and MW-4. The direction and gradient are consistent with the groundwater flow direction previously reported at the Site (LFR 2001).



### 3.2 Area C

As illustrated on Figure 2, the direction of shallow groundwater flow beneath Area C of the Site is toward the west. The hydraulic gradient across this portion of the Site is 0.008 ft/ft, as measured between wells MW-10R and MW-12R. The direction and gradient are consistent with the groundwater flow direction previously reported at the Site (LFR 2001).

## 4.0 GROUNDWATER SAMPLING AND ANALYSIS

On December 6 and 7, 2001, LFR personnel collected groundwater samples for chemical analysis. Fourteen samples were collected from 13 shallow groundwater monitoring wells (less than 25 feet bgs; MW-2, MW-3, MW-4, MW-5, MW-6, MW-7, MW-8, MW-9, MW-10R, MW-12R, MW-22, MW-23, and MW-34R). A total of four samples were collected from three intermediate-depth wells (30 to 45 feet bgs; MW-6D, MW-7D, and MW-9D), and one deeper well (50 to 65 feet bgs; MW-7Z).

Before groundwater samples were collected, three to four well volumes of water were purged from each well, in accordance with field procedures for groundwater sampling described in Appendix A. During purging, indicator parameters such as pH, temperature, and specific conductance were recorded on water-quality sampling sheets. After collection, samples were submitted under strict chain-of-custody protocol to Curtis & Tompkins, Ltd., a California state-certified laboratory located in Berkeley, California.

All samples were analyzed for VOCs using EPA Method 8010. Samples collected from wells MW-2 and MW-3 were also analyzed for total petroleum hydrocarbons as gasoline (TPHg) using EPA Method 8015 (modified) and benzene, toluene, ethylbenzene, and total xylenes (BTEX) using EPA Method 8020.

For quality assurance/quality control (QA/QC) purposes, one duplicate sample was collected from well MW-34R and a field-equipment blank was collected at well MW-12R. The samples were analyzed for VOCs. Results of the duplicate sample collected at MW-34R were similar to the results from the primary sample, and the field-equipment blank contained no VOCs above analytical reporting limits. Tables 3A and 3B summarize the sampling and analytical QA/QC for samples collected during the reporting quarter.

## 5.0 GROUNDWATER QUALITY

Table 4 summarizes the analytical results for groundwater samples collected.

## 5.1 Volatile Organic Compounds

In general, the concentrations of VOCs detected in samples collected during the reporting quarter are within the same order of magnitude as samples previously collected at the Site (Table 4). No VOCs were detected at concentrations above method detection limits in groundwater samples collected from shallow wells MW-2, MW-3, MW-4, MW-6D, MW-7Z, MW-8, MW-12R, and LF-22.

1,1-Dichloroethene (1,1-DCE) was detected in samples collected from shallow monitoring wells MW-5 (0.014 milligrams per liter [mg/l]), MW-6 (0.120 mg/l), MW-7 (0.190 mg/l), MW-9 (0.050 mg/l), MW-10R (0.0012 mg/l), MW-34R (0.0028 mg /l [primary]/0.0029 mg/l [duplicate]), LF-23 (0.0013 mg/l), and MW-7D (0.0016 mg/l). No 1,1-DCE was detected above analytical reporting limits in samples collected from the remaining wells monitored during the current monitoring event.

Trichloroethene (TCE) was detected in the samples collected from wells MW-5 at 0.001 mg/l, MW-10R (0.290 mg/l), and MW-34R (0.010 mg/l). No TCE was detected above analytical reporting limits in samples collected from the remaining wells monitored during the current event.

Tetrachloroethene (PCE) was detected in the samples collected from wells MW-5 (0.0032 mg/l), MW-10R (0.0026 mg/l), and MW-23 (0.0012 mg/l). No PCE was detected above analytical reporting limits in samples collected from the remaining wells monitored during the current event.

1,1,1-Trichloroethane (1,1,1-TCA) was detected in samples collected from shallow monitoring wells MW-5 (0.0005 mg/l), MW-6 (0.006 mg/l), MW-7 (0.0056 mg/l), and MW-9 (0.0016 mg/l). No 1,1,1-TCA was detected above analytical reporting limits in samples collected from the remaining wells monitored during the current event.

1,1-Dichloroethane (1,1-DCA) was detected in samples collected from shallow monitoring wells MW-5 (0.0019 mg/l), MW-6 (0.0024 mg/l), MW-7 (0.0065 mg/l), and MW-9 (0.019 mg/l). No 1,1-DCA was detected above analytical reporting limits in samples collected from the remaining wells monitored during the current event.

## 5.2 Total Petroleum Hydrocarbons

TPHg was detected at 0.320 mg/l in the sample collected from well MW-2. No TPHg was present above analytical reporting limits of 0.05 mg/l in the sample collected from well MW-3. The sample collected from well MW-2 contained ethylbenzene (0.017 mg/l).

## 6.0 SUMMARY

Groundwater gradient and flow direction measured in December 2001 is generally consistent with the groundwater flow direction previously reported for the Site (LFR 2001).

Analytical results for groundwater samples collected in December 2001 are similar to results previously reported for the Site (Tables 1 and 4).

Analytical results for groundwater samples collected during the reporting quarter indicate that the plume of VOC-affected groundwater is stable and likely extends to the north between wells MW-3 and MW-6 and to the south between wells MW-7 and MW-8. The plume extends approximately 800 feet southwest (downgradient) of well MW-6 toward the extraction wells and collection trench, and is approximately 300-feet wide. These plume dimensions are consistent with historical measurements at the Site.

Analytical results for samples collected from wells LF-22 and LF-23 indicate that the shutdown of the GWETS has not affected groundwater quality across Hollis Street.

## 7.0 REQUEST FOR CASE CLOSURE

As agreed during a meeting on November 17, 2000 and formally approved in a September 5, 2001 letter from the RWQCB, Catellus conducted quarterly groundwater monitoring for a period of one year following shutdown of the GWETS.

The analytical results of the samples collected from wells MW-4, MW-5, MW-9, LF-22, or LF-23 after the GWETS was shut down indicate that the plume of affected groundwater at the Site is stable. The analytical results of the samples collected from wells MW-4, MW-5, MW-9, LF-22, or LF-23 are similar to the results of the samples collected in November 2000 when the GWETS was initially shut down and significantly below the concentration of 165  $\mu\text{g/l}$  for 1,1-DCE (see Table 1). The concentration of 165  $\mu\text{g/l}$  for 1,1-DCE was selected because it is one-half of the highest concentration of 1,1-DCE that has been detected in groundwater samples collected at the Site. The proposed target concentration of 165  $\mu\text{g/l}$  is well below the risk-based screening level of 1,000  $\mu\text{g/l}$  for 1,1-DCE, which was provided by the RWQCB for groundwater that is not to be used for drinking water.

The highest concentration of 1,1-DCE detected at the Site (330  $\mu\text{g/l}$ ) was in a sample collected from well MW-6 in September 1996. Currently, the highest concentration of 1,1-DCE in the key wells listed above is 50  $\mu\text{g/l}$  in the sample collected from well MW-9 in December 2001. This concentration is consistent with the range of 1,1-DCE concentrations historically collected from well MW-9 (160  $\mu\text{g/l}$  in November 1994 to 32  $\mu\text{g/l}$  in May 2001).

Therefore we are requesting that the RWQCB review the groundwater data for the Site. After the RWQCB's review of the data, Catellus would like to receive a letter from the RWQCB stating that no further investigation, remediation, or monitoring of soil or groundwater is warranted.

## REFERENCES

- LFR Levine-Fricke. 1992a. Containment Plan for Total Petroleum Hydrocarbon-Affected Soils, Yerba Buena Project Site, Emeryville and Oakland, California. March 10.
- . 1992b. Soil Remediation Activities Report, Former Ransome Property, Yerba Buena Project Site, Emeryville, California. March 21.
- . 1994. Soils Management Plan for Petroleum Hydrocarbon-Affected Soils, Yerba Buena/East Baybridge Center, Emeryville and Oakland, California. November 30.
- . 1998. Groundwater Monitoring Plan, East Baybridge Center, Emeryville and Oakland, California. April 15.
- . 2001. Quarterly Monitoring Report for July 1 through September 30, 2001, East Baybridge Center, Emeryville and Oakland, California. October 31.

**Table 1**  
**Summary of Groundwater Quality Data for Selected Wells**  
**East Baybridge Center**  
**Emeryville and Oakland, California**  
*(concentrations expressed in parts per million [ppm])*

Well ID	Notes	Date Sampled	Lab	TPHd	TCE	1,1,1-TCA	PCE	1,1-DCE	1,1-DCA	1,2-DCA	cis/trans-1,2-DCE	Total VOC
Shallow Wells (20 to 25 feet below grade)												
MW-4		09-May-00	CT	<0.05	<0.0005	<0.0005	<0.0005	<0.0005	<0.0005	<0.0005	<0.0005	ND
		11-Sep-00	CT	<0.05	<0.0005	<0.0005	<0.0005	<0.0005	0.0005	<0.0005	<0.0005	0.0005
		09-Feb-01	CT	0.072	<0.0005	<0.0005	<0.0005	<0.0005	<0.0005	<0.0005	<0.0005	<0.0005
		09-May-01	CT	NA	<0.0005	<0.0005	<0.0005	<0.0005	<0.0005	<0.0005	<0.0005	<0.0005
		15-Aug-01	CT	0.081	<0.0005	<0.0005	<0.0005	<0.0005	<0.0005	<0.0005	<0.0005	<0.0005
		06-Dec-01	CT	NA	<0.0005	<0.0005	<0.0005	<0.0005	<0.0005	<0.0005	<0.0005	<0.0005
MW-5		09-May-00	CT	<0.05	<0.0005	<0.0005	0.0009	0.0052	0.0013	<0.0005	<0.0005	0.0074
		11-Sep-00	CT	<0.05	<0.0005	<0.0005	0.0013	0.0057	0.0014	<0.0005	<0.0005	0.0084
		09-Feb-01	CT	<0.05	<0.0005	<0.0005	0.0014	0.011	0.0019	<0.0005	<0.0005	0.0143
		09-May-01	CT	NA	<0.0005	<0.0005	0.0014	0.0095	0.0014	<0.0005	<0.0005	0.0123
		15-Aug-01	CT	0.082	<0.0005	<0.0005	0.0015	0.0099	0.0016	<0.0005	<0.0005	0.013
	(78)	06-Dec-01	CT	NA	0.001	0.0005	0.0032	0.014	0.0019	<0.0005	<0.0005	0.0211
MW-9		08-Feb-01	CT	<0.05	<0.0005	0.0020	<0.0005	0.044	0.0014	<0.0005	<0.0005	0.0474
		08-May-01	CT	NA	<0.0005	0.0016	<0.0005	0.032	0.0014	<0.0005	<0.0005	0.035
		24-Sep-01	CT	0.072	<0.0005	0.0017	<0.0005	0.042	0.0015	<0.0005	<0.0005	0.0452
		07-Dec-01	CT	NA	<0.0005	0.0016	<0.0005	0.050	0.0019	<0.0005	<0.0005	0.0535
LF-22		09-May-00	CT	NA	<0.0005	<0.0005	<0.0005	<0.0005	<0.0005	<0.0005	<0.0005	ND
		12-Sep-00	CT	NA	<0.0005	<0.0005	<0.0005	<0.0005	<0.0005	<0.0005	<0.0005	ND
		08-Feb-01	CT	<0.05	<0.0005	<0.0005	<0.0005	<0.0005	<0.0005	<0.0005	<0.0005	ND
		09-May-01	CT	NA	<0.0005	<0.0005	<0.0005	<0.0005	<0.0005	<0.0005	<0.0005	ND
		15-Aug-01	CT	0.065	<0.0005	<0.0005	<0.0005	<0.0005	<0.0005	<0.0005	<0.0005	ND
		07-Dec-01	CT	0.065	<0.0005	<0.0005	<0.0005	<0.0005	<0.0005	<0.0005	<0.0005	ND

**Table 1**  
**Summary of Groundwater Quality Data for Selected Wells**  
**East Baybridge Center**  
**Emeryville and Oakland, California**  
*(concentrations expressed in parts per million [ppm])*

Well ID	Notes	Date Sampled	Lab	TPHd	TCE	1,1,1-TCA	PCE	1,1-DCE	1,1-DCA	1,2-DCA	cis/trans-1,2-DCE	Total VOC
LF-23		09-May-00	CT	NA	0.0006	<0.0005	0.0007	<0.0005	<0.0005	<0.0005	<0.0005	0.0013
		12-Sep-00	CT	NA	0.0008	<0.0005	0.0014	<0.0005	0.001	0.0007	<0.0005	0.0036
		08-Feb-01	CT	0.059	0.0005	<0.0005	0.0009	<0.0005	<0.0005	<0.0005	<0.0005	0.0014
	duplicate		08-Feb-01	CT	0.073	0.0006	<0.0005	0.0008	<0.0005	<0.0005	<0.0005	0.0014
		09-May-01	CT	NA	0.0005	<0.0005	0.0006	<0.0005	<0.0005	<0.0005	<0.0005	0.0011
	duplicate		09-May-01	CT	NA	0.0005	<0.0005	0.0006	<0.0005	<0.0005	<0.0005	0.0011
	(75)	15-Aug-01	CT	0.069	0.0007	<0.0005	0.0010	0.0018	<0.0005	<0.0005	<0.0005	0.0035
	duplicate	(76)	15-Aug-01	CT	NA	0.0007	<0.0005	0.0012	0.0017	<0.0005	<0.0005	<0.0005
	(82)	07-Dec-01	CT	NA	<0.0005	<0.0005	0.0012	0.0013	<0.0005	<0.0005	<0.0005	0.0025

REGULATORY CONCENTRATIONS												
MCL				NE	0.005	0.200	0.005	0.0005	0.005	0.005	0.006/0.010	
RWQCB RBSL groundwater is NOT a source of drinking water				0.640	0.360	0.062	0.120	0.025	0.047	0.910	0.590/0.590	
RWQCB RBSL groundwater is a source of drinking water				0.100	0.005	0.062	0.005	0.0032	0.005	0.005	0.006/0.010	

**NOTES:**

(75) Chloroform 0.033

(76) Chloroform 0.037

(78) Vinyl chloride 0.0005

(82) Chloroform 0.0042

CT = Curtis & Tompkins, Ltd.

MCL = U.S. EPA maximum contaminant levels; where available MCLs by the California Department of Health Services are provided.

NA = parameter not analyzed

ND = parameter not detected

NE = parameter not established

RWQCB RBSL = Regional Water Quality Control Board Risk-Based Screening Level

TPHd = total petroleum hydrocarbons as diesel

1,1-DCA = 1,1-Dichloroethane

1,2-DCA = 1,2-Dichloroethane

1,1-DCE = 1,1-Dichloroethene

cis/trans-1,2-DCE = cis and trans-1,2-Dichloroethene

PCE = Tetrachloroethene

1,1,1-TCA = 1,1,1-Trichloroethane

TCE = Trichloroethene

**Table 2**  
**Well Construction and Groundwater Elevation Data**  
**East Baybridge Center**  
**Emeryville and Oakland, California**

Well Number	Well Elevation (1)	Well Depth (2)	Screened Interval (2)	Date Measured	Depth to Water	Groundwater Elevation (3)
<b>Shallow Wells</b>						
MW-1	27.47	30	15-30	12-Sep-94	14.88	12.59
				30-Nov-94	14.61	12.86
				16-Feb-95	14.73	12.74
				08-May-95	14.55	12.92
				30-Aug-95	14.62	12.85
				19-Dec-95	13.38	14.09
				26-Feb-96	14.27	13.20
				29-Apr-96	14.69	12.78
				03-Sep-96	14.70	12.77
				13-Dec-96	(4)	
MW-2	37.23	18	8-18	12-Sep-94	8.00	29.23
				30-Nov-94	6.84	30.39
				16-Feb-95	6.84	30.39
				08-May-95	7.08	30.15
				30-Aug-95	9.03	28.20
				19-Dec-95	6.95	30.28
				26-Feb-96	6.62	30.61
				29-Apr-96	7.92	29.31
				03-Sep-96	8.10	29.13
				13-Dec-96	6.59	30.64
				18-Feb-97	7.60	29.63
				26-May-97	8.16	29.07
				21-Aug-97	7.06	30.17
				02-Jan-98	7.87	29.36
				09-Mar-98	6.94	30.29
				14-Sep-98	7.79	29.44
				25-Mar-99	6.93	30.30
				21-Sep-99	7.71	29.52
				10-May-00	7.35	29.88
				24-Oct-00	8.44	28.79
08-Feb-01	8.45	28.78				
08-May-01	8.34	28.89				
15-Aug-01	8.15	29.08				
06-Dec-01	6.32	30.91				
MW-3	32.05	25	14-25	12-Sep-94	9.88	22.17
				30-Nov-94	9.96	22.09
				16-Feb-95	9.24	22.81
				08-May-95	9.82	22.23
				30-Aug-95	11.75	20.30
				19-Dec-95	9.65	22.40
26-Feb-96	8.80	23.25				



**Table 2**  
**Well Construction and Groundwater Elevation Data**  
**East Baybridge Center**  
**Emeryville and Oakland, California**

Well Number	Well Elevation (1)	Well Depth (2)	Screened Interval (2)	Date Measured	Depth to Water	Groundwater Elevation (3)
				29-Apr-96	10.66	21.39
				03-Sep-96	10.51	21.54
				13-Dec-96	9.85	22.20
				18-Feb-97	9.93	22.12
				26-May-97	10.66	21.39
				21-Aug-97	9.80	22.25
				02-Jan-98	10.75	21.30
				09-Mar-98	9.03	23.02
				14-Sep-98	9.82	22.23
				25-Mar-99	9.19	22.86
				21-Sep-99	10.04	22.01
				10-May-00	10.70	21.35
				24-Oct-00	11.23	20.82
				08-Feb-01	11.42	20.63
				08-May-01	11.02	21.03
				15-Aug-01	11.07	20.98
				06-Dec-01	9.48	22.57
<b>MW-4</b>	24.28	25	12-25	12-Sep-94	17.01	7.27
				30-Nov-94	16.15	8.13
				16-Feb-95	16.38	7.90
				08-May-95	16.27	8.01
				30-Aug-95	16.32	7.96
				19-Dec-95	14.52	9.76
				26-Feb-96	13.29	10.99
				29-Apr-96	15.08	9.20
				03-Sep-96	14.70	9.58
				13-Dec-96	13.52	10.76
				18-Feb-97	13.92	10.36
				26-May-97	14.51	9.77
				21-Aug-97	14.40	9.88
				02-Jan-98	14.07	10.21
				09-Mar-98	13.39	10.89
				14-Sep-98	14.30	9.98
				25-Mar-99	12.99	11.29
				21-Sep-99	14.45	9.83
				09-May-00	14.25	10.03
				24-Oct-00	15.17	9.11
				08-Feb-01	15.32	8.96
				08-May-01	14.13	10.15
				15-Aug-01	13.94	10.34
				06-Dec-01	12.74	11.54

**Table 2**  
**Well Construction and Groundwater Elevation Data**  
**East Baybridge Center**  
**Emeryville and Oakland, California**

Well Number	Well Elevation (1)	Well Depth (2)	Screened Interval (2)	Date Measured	Depth to Water	Groundwater Elevation (3)
MW-5	22.19	21.5	11.5-21.5	12-Sep-94	17.15	5.04
				30-Nov-94	15.94	6.25
				16-Feb-95	16.45	5.74
				08-May-95	16.08	6.11
				30-Aug-95	15.79	6.40
				19-Dec-95	13.81	8.38
				26-Feb-96	12.69	9.50
				29-Apr-96	14.49	7.70
				03-Sep-96	14.11	8.08
				13-Dec-96	12.67	9.52
				18-Feb-97	12.83	9.36
				26-May-97	13.90	8.29
				21-Aug-97	13.71	8.48
				02-Jan-98	13.54	8.65
				09-Mar-98	12.88	9.31
				14-Sep-98	13.88	8.31
				25-Mar-99	12.34	9.85
				21-Sep-99	14.00	8.19
				09-May-00	13.75	8.44
				24-Oct-00	14.61	7.58
08-Feb-01	13.81	8.38				
08-May-01	13.71	8.48				
15-Aug-01	13.69	8.50				
06-Dec-01	12.47	9.72				
MW-6	28.54	21.5	11.5-21.5	12-Sep-94	12.58	15.96
				30-Nov-94	12.75	15.79
				16-Feb-95	12.17	16.37
				08-May-95	12.75	15.79
				30-Aug-95	14.22	14.32
				19-Dec-95	13.17	15.37
				26-Feb-96	11.37	17.17
				29-Apr-96	12.95	15.59
				03-Sep-96	12.67	15.87
				13-Dec-96	11.83	16.71
				18-Feb-97	11.92	16.62
				26-May-97	12.40	16.14
				21-Aug-97	12.31	16.23
				02-Jan-98	12.18	16.36
				09-Mar-98	11.37	17.17
				14-Sep-98	12.24	16.30
25-Mar-99	10.69	17.85				
21-Sep-99	12.70	15.84				
10-May-00	12.68	15.86				
24-Oct-00	13.78	14.76				

**Table 2**  
**Well Construction and Groundwater Elevation Data**  
**East Baybridge Center**  
**Emeryville and Oakland, California**

Well Number	Well Elevation (1)	Well Depth (2)	Screened Interval (2)	Date Measured	Depth to Water	Groundwater Elevation (3)
				08-Feb-01	13.45	15.09
				08-May-01	11.55	16.99
				15-Aug-01	13.49	15.05
				06-Dec-01	11.91	16.63
MW-7	26.29	23.5	13.5-23.5	12-Sep-94	11.60	14.69
				30-Nov-94	11.53	14.76
				16-Feb-95	10.82	15.47
				08-May-95	11.84	14.45
				30-Aug-95	12.81	13.48
				19-Dec-95	11.77	14.52
				26-Feb-96	10.04	16.25
				29-Apr-96	11.55	14.74
				03-Sep-96	11.32	14.97
				13-Dec-96	10.96	15.33
				18-Feb-97	10.68	15.61
				26-May-97	11.08	15.21
				21-Aug-97	10.92	15.37
				02-Jan-98	10.78	15.51
				09-Mar-98	10.06	16.23
				14-Sep-98	10.95	15.34
				25-Mar-99	10.13	16.16
				21-Sep-99	11.32	14.97
				09-May-00	11.35	14.94
				24-Oct-00	12.32	13.97
				08-Feb-01	11.82	14.47
				08-May-01	11.45	14.84
				15-Aug-01	11.74	14.55
				06-Dec-01	10.45	15.84
MW-8	24.40	20.5	10.5-20.5	12-Sep-94	9.96	14.44
				30-Nov-94	9.96	14.44
				16-Feb-95	9.68	14.72
				08-May-95	10.06	14.34
				30-Aug-95	11.10	13.30
				19-Dec-95	10.22	14.18
				26-Feb-96	8.78	15.62
				29-Apr-96	10.05	14.35
				03-Sep-96	9.67	14.73
				13-Dec-96	9.20	15.20
				18-Feb-97	9.30	15.10
				26-May-97	9.50	14.90
				21-Aug-97	9.06	15.34
				02-Jan-98	9.38	15.02
				09-Mar-98	8.51	15.89

**Table 2**  
**Well Construction and Groundwater Elevation Data**  
**East Baybridge Center**  
**Emeryville and Oakland, California**

Well Number	Well Elevation (1)	Well Depth (2)	Screened Interval (2)	Date Measured	Depth to Water	Groundwater Elevation (3)
				14-Sep-98	9.38	15.02
				25-Mar-99	8.95	15.45
				21-Sep-99	9.55	14.85
				09-May-00	9.70	14.70
				24-Oct-00	10.62	13.78
				08-Feb-01	10.31	14.09
				08-May-01	10.15	14.25
				15-Aug-01	10.36	14.04
				06-Dec-01	9.01	15.39
MW-9	24.17	26	14-26	12-Sep-94	19.70	4.47
				30-Nov-94	17.65	6.52
				16-Feb-95	18.85	5.32
				08-May-95	19.47	4.70
				30-Aug-95	19.65	4.52
				19-Dec-95	18.43	5.74
				26-Feb-96	16.46	7.71
				29-Apr-96	18.91	5.26
				03-Sep-96	19.12	5.05
				13-Dec-96	16.22	7.95
				18-Feb-97	18.49	5.68
				26-May-97	18.60	5.57
				21-Aug-97	17.32	6.85
				02-Jan-98	15.33	8.84
				09-Mar-98	17.41	6.76
				14-Sep-98	18.45	5.72
				25-Mar-99	17.85	6.32
				21-Sep-99	17.82	6.35
				08-Feb-01	15.02	9.15
				08-May-01	15.02	9.15
				24-Sep-01	NM	NM
				06-Dec-01	13.63	10.54
MW-10	13.21			19-Dec-95	6.31	6.90
				26-Feb-96	6.09	7.12
				29-Apr-96	6.73	6.48
				03-Sep-96	6.50	6.71
				13-Dec-96	5.86	7.35
				18-Feb-97	6.72	6.49
				26-May-97	6.61	6.60
				21-Aug-97	6.82	6.39
				02-Jan-98	6.60	6.61
				09-Mar-98	5.95	7.26
				14-Sep-98	6.45	6.76
				25-Mar-99	5.71	7.50

**Table 2**  
**Well Construction and Groundwater Elevation Data**  
**East Baybridge Center**  
**Emeryville and Oakland, California**

Well Number	Well Elevation (1)	Well Depth (2)	Screened Interval (2)	Date Measured	Depth to Water	Groundwater Elevation (3)
				21-Sep-99	7.20	6.01
				09-May-00	6.80	6.41
				24-Oct-00	7.39	5.82
				08-Feb-01	7.29	5.92
				08-May-01	7.35	5.86
				15-Aug-01	6.82	6.39
				06-Dec-01	5.53	7.68
MW-12	10.42			19-Dec-95	10.69	-0.27
				26-Feb-96	9.66	0.76
				29-Apr-96	10.98	-0.56
				03-Sep-96	11.05	-0.63
				13-Dec-96	10.04	0.38
				18-Feb-97	10.42	0.00
				26-May-97	10.83	-0.41
				21-Aug-97	10.53	-0.11
				02-Jan-98	10.05	0.37
				09-Mar-98	10.10	0.32
				14-Sep-98	10.71	-0.29
				25-Mar-99	9.95	0.47
				21-Sep-99	10.94	-0.52
				10-May-00	10.50	-0.08
				24-Oct-00	11.13	-0.71
				08-Feb-01	10.79	-0.37
				08-May-01	10.95	-0.53
				15-Aug-01	10.89	-0.47
				06-Dec-01	9.92	0.50
MW-31	19.14			19-Dec-95	6.92	12.22
				26-Feb-96	6.99	12.15
				29-Apr-96	7.54	11.60
				03-Sep-96	7.55	11.59
				13-Dec-96	6.72	12.42
				18-Feb-97	7.45	11.69
				26-May-97	7.45	11.69
				21-Aug-97	7.06	12.08
				02-Jan-98	7.30	11.84
				09-Mar-98	7.04	12.10
				14-Sep-98	7.38	11.76
				25-Mar-99	7.05	12.09
				21-Sep-99	7.43	11.71
				24-Oct-00	7.65	11.49
				08-Feb-01	7.62	11.52
				08-May-01	7.65	11.49
				15-Aug-01	7.39	11.75

Table 2  
Well Construction and Groundwater Elevation Data  
East Baybridge Center  
Emeryville and Oakland, California

Well Number	Well Elevation (1)	Well Depth (2)	Screened Interval (2)	Date Measured	Depth to Water	Groundwater Elevation (3)
				06-Dec-01	6.42	12.72
MW-32	15.52			19-Dec-95	8.92	6.60
				26-Feb-96	8.48	7.04
				29-Apr-96	9.46	6.06
				03-Sep-96	9.20	6.32
				13-Dec-96	8.35	7.17
				18-Feb-97	9.15	6.37
				26-May-97	9.10	6.42
				21-Aug-97	9.32	6.20
				02-Jan-98	8.98	6.54
				09-Mar-98	8.29	7.23
				14-Sep-98	8.95	6.57
				25-Mar-99	8.04	7.48
				21-Sep-99	9.67	5.85
				24-Oct-00	9.91	5.61
				08-Feb-01	9.76	5.76
				08-May-01	9.84	5.68
				15-Aug-01	9.27	6.25
				06-Dec-01	8.17	7.35
MW-34	11.97			19-Dec-95	11.20	0.77
				26-Feb-96	12.12	-0.15
				29-Apr-96	12.47	-0.50
				03-Sep-96	12.21	-0.24
				13-Dec-96	11.36	0.61
				18-Feb-97	11.74	0.23
				26-May-97	11.74	0.23
				21-Aug-97	11.51	0.46
				02-Jan-98	12.18	-0.21
				09-Mar-98	11.46	0.51
				14-Sep-98	11.22	0.75
				25-Mar-99	10.93	1.04
				21-Sep-99	11.72	0.25
				10-May-00	11.75	0.22
				24-Oct-00	12.13	-0.16
				08-Feb-01	12.22	-0.25
				08-May-01	11.97	0.00
				15-Aug-01	11.69	0.28
				06-Dec-01	11.51	0.46
LF-13	9.19			19-Dec-95	2.86	6.33
				26-Feb-96	2.55	6.64
				29-Apr-96	6.13	3.06
				03-Sep-96	6.58	2.61

**Table 2**  
**Well Construction and Groundwater Elevation Data**  
**East Baybridge Center**  
**Emeryville and Oakland, California**

Well Number	Well Elevation (1)	Well Depth (2)	Screened Interval (2)	Date Measured	Depth to Water	Groundwater Elevation (3)
				13-Dec-96	1.67	7.52
				18-Feb-97	4.59	4.60
				21-Aug-97	NM	NM
				02-Jan-98	NM	NM
				09-Mar-98	NM	NM
				14-Sep-98	NM	NM
				25-Mar-99	NM	NM
LF-22	17.99	20	10-20	12-Sep-94	11.96	6.03
				30-Nov-94	9.69	8.30
				16-Feb-95	10.45	7.54
				08-May-95	11.40	6.59
				30-Aug-95	13.03	4.96
				19-Dec-95	9.42	8.57
				26-Feb-96	8.84	9.15
				29-Apr-96	10.29	7.70
				03-Sep-96	11.20	6.79
				13-Dec-96	8.18	9.81
				18-Feb-97	9.56	8.43
				26-May-97	10.90	7.09
				21-Aug-97	10.75	7.24
				02-Jan-98	9.33	8.66
				09-Mar-98	9.23	8.76
				14-Sep-98	10.55	7.44
				25-Mar-99	9.26	8.73
				21-Sep-99	10.03	7.96
				09-May-00	10.20	7.79
				24-Oct-00	11.88	6.11
				08-Feb-01	10.17	7.82
				08-May-01	10.24	7.75
				15-Aug-01	9.90	8.09
				06-Dec-01	8.06	9.93
LF-23	17.99	20	10-20	12-Sep-94	12.24	5.75
				30-Nov-94	10.05	7.94
				16-Feb-95	11.10	6.89
				08-May-95	11.88	6.11
				30-Aug-95	13.38	4.61
				19-Dec-95	10.01	7.98
				26-Feb-96	8.97	9.02
				29-Apr-96	10.84	7.15
				03-Sep-96	11.35	6.64
				13-Dec-96	8.47	9.52
				18-Feb-97	9.28	8.71
				26-May-97	10.71	7.28

**Table 2**  
**Well Construction and Groundwater Elevation Data**  
**East Baybridge Center**  
**Emeryville and Oakland, California**

Well Number	Well Elevation (1)	Well Depth (2)	Screened Interval (2)	Date Measured	Depth to Water	Groundwater Elevation (3)
				21-Aug-97	10.75	7.24
				02-Jan-98	9.57	8.42
				09-Mar-98	9.21	8.78
				14-Sep-98	10.97	7.02
				25-Mar-99	9.21	8.78
				21-Sep-99	10.35	7.64
				09-May-00	10.65	7.34
				24-Oct-00	12.40	5.59
				08-Feb-01	10.66	7.33
				08-May-01	10.75	7.24
				15-Aug-01	9.75	8.24
				06-Dec-01	8.15	9.84

<b>Extraction Wells</b>						
-------------------------	--	--	--	--	--	--

EX-1 (LF-1)	23.51	NA	NA	12-Sep-94	24.83	-1.32
				30-Nov-94	19.16	4.35
				08-May-95	23.45	0.06
				30-Aug-95	23.45	0.06
				19-Dec-95	23.50	0.01
				26-Feb-96	18.38	5.13
				29-Apr-96	NM	NM
				03-Sep-96	22.15	1.36
				13-Dec-96	13.38	10.13
				09-Jan-97	10.65	12.86
				18-Feb-97	20.55	2.96
				26-May-97	19.40	4.11
				21-Aug-97	20.70	2.81
				02-Jan-98	9.70	13.81
				09-Mar-98	20.60	2.91
14-Sep-98	NM	NM				
25-Mar-99	19.15	4.36				
24-Oct-00	22.40	1.11				
08-Feb-01	NM	NM				
06-Dec-01	NM	NM				
EX-2 (LF-2)	20.03	NA	NA	12-Sep-94	20.11	-0.08
				30-Nov-94	15.68	4.35
				08-May-95	20.70	-0.67
				30-Aug-95	20.68	-0.65
				19-Dec-95	20.40	-0.37
				26-Feb-96	14.91	5.12
				29-Apr-96	20.47	-0.44
				03-Sep-96	18.80	1.23
				13-Dec-96	NM	NM
				09-Jan-97	10.69	9.34



**Table 2**  
**Well Construction and Groundwater Elevation Data**  
**East Baybridge Center**  
**Emeryville and Oakland, California**

Well Number	Well Elevation (1)	Well Depth (2)	Screened Interval (2)	Date Measured	Depth to Water	Groundwater Elevation (3)
				18-Feb-97	NM	NM
				26-May-97	23.50	-3.47
				21-Aug-97	23.46	-3.43
				02-Jan-98	NM	NM
				09-Mar-98	NM	NM
				14-Sep-98	22.05	-2.02
				25-Mar-99	22.35	-2.32
				24-Oct-00	18.92	1.11
				08-Feb-01	NM	NM
				06-Dec-01	NM	NM
EX-3	20.96	24	7.5-24	12-Sep-94	22.33	-1.37
				30-Nov-94	15.50	5.46
				16-Feb-95	17.80	3.16
				08-May-95	19.80	1.16
				30-Aug-95	19.86	1.10
				19-Dec-95	17.00	3.96
				26-Feb-96	15.10	5.86
				29-Apr-96	16.21	4.75
				03-Sep-96	16.65	4.31
				13-Dec-96	12.95	8.01
				18-Feb-97	12.40	8.56
				26-May-97	13.11	7.85
				21-Aug-97	13.15	7.81
				02-Jan-98	10.86	10.10
				09-Mar-98	12.03	8.93
				14-Sep-98	15.36	5.60
				25-Mar-99	11.80	9.16
				21-Sep-99	16.80	4.16
				24-Oct-00	14.51	6.45
				08-Feb-01	12.75	8.21
				06-Dec-01	NM	NM
EX-4	24.40	25	8-25	12-Sep-94	22.61	1.79
				30-Nov-94	20.70	3.70
				16-Feb-95	20.55	3.85
				08-May-95	20.85	3.55
				30-Aug-95	20.88	3.52
				19-Dec-95	19.41	4.99
				26-Feb-96	20.40	4.00
				29-Apr-96	19.75	4.65
				03-Sep-96	20.65	3.75
				13-Dec-96	18.59	5.81
				18-Feb-97	21.00	3.40
				26-May-97	21.00	3.40

**Table 2**  
**Well Construction and Groundwater Elevation Data**  
**East Baybridge Center**  
**Emeryville and Oakland, California**

Well Number	Well Elevation (1)	Well Depth (2)	Screened Interval (2)	Date Measured	Depth to Water	Groundwater Elevation (3)
				21-Aug-97	18.67	5.73
				02-Jan-98	13.09	11.31
				09-Mar-98	20.90	3.50
				14-Sep-98	20.28	4.12
				25-Mar-99	18.85	5.55
				21-Sep-99	20.15	4.25
				24-Oct-00	20.42	3.98
				08-Feb-01	14.41	9.99
				06-Dec-01	NM	NM

<b>Deeper Wells</b>
---------------------

MW-6D	28.48	45	32-40	12-Sep-94	11.09	17.39
				30-Nov-94	11.46	17.02
				16-Feb-95	10.67	17.81
				08-May-95	11.58	16.90
				30-Aug-95	12.93	15.55
				19-Dec-95	13.14	15.34
				26-Feb-96	10.14	18.34
				29-Apr-96	11.57	16.91
				03-Sep-96	11.48	17.00
				13-Dec-96	12.29	16.19
				18-Feb-97	10.75	17.73
				26-May-97	16.50	11.98
				21-Aug-97	10.86	17.62
				02-Jan-98	11.21	17.27
				09-Mar-98	9.97	18.51
				14-Sep-98	11.85	16.63
				25-Mar-99	11.55	16.93
				21-Sep-99	11.56	16.92
				10-May-00	14.50	13.98
24-Oct-00	13.72	14.76				
08-Feb-01	12.26	16.22				
08-May-01	13.16	15.32				
15-Aug-01	11.94	16.54				
06-Dec-01	10.20	18.28				
MW-7D	26.27	40	27-40	12-Sep-94	11.32	14.95
				30-Nov-94	11.30	14.97
				16-Feb-95	11.01	15.26
				08-May-95	11.35	14.92
				30-Aug-95	12.65	13.62
				19-Dec-95	11.61	14.66
				26-Feb-96	9.84	16.43
				29-Apr-96	11.38	14.89
				03-Sep-96	11.18	15.09

**Table 2**  
**Well Construction and Groundwater Elevation Data**  
**East Baybridge Center**  
**Emeryville and Oakland, California**

Well Number	Well Elevation (1)	Well Depth (2)	Screened Interval (2)	Date Measured	Depth to Water	Groundwater Elevation (3)
				13-Dec-96	10.72	15.55
				18-Feb-97	10.45	15.82
				26-May-97	10.90	15.37
				21-Aug-97	10.75	15.52
				02-Jan-98	10.60	15.67
				09-Mar-98	9.87	16.40
				14-Sep-98	10.77	15.50
				25-Mar-99	9.98	16.29
				21-Sep-99	11.15	15.12
				09-May-00	11.15	15.12
				24-Oct-00	12.13	14.14
				08-Feb-01	10.15	16.12
				08-May-01	11.67	14.60
				15-Aug-01	11.71	14.56
				06-Dec-01	9.67	16.60
<b>MW-9D</b>	<b>24.17</b>	<b>45</b>	<b>32-45</b>	12-Sep-94	18.38	5.79
				30-Nov-94	16.35	7.82
				16-Feb-95	16.43	7.74
				08-May-95	16.96	7.21
				30-Aug-95	18.28	5.89
				19-Dec-95	16.50	7.67
				26-Feb-96	14.68	9.49
				29-Apr-96	16.85	7.32
				03-Sep-96	17.61	6.56
				13-Dec-96	15.23	8.94
				18-Feb-97	15.97	8.20
				26-May-97	17.14	7.03
				21-Aug-97	17.22	6.95
				02-Jan-98	16.10	8.07
				09-Mar-98	15.11	9.06
				14-Sep-98	17.29	6.88
				25-Mar-99	14.86	9.31
				21-Sep-99	17.50	6.67
				08-Feb-01	16.58	7.59
				08-May-01	16.69	7.48
				06-Dec-01	14.79	7.89
<b>Deep Well</b>						
<b>MW-7Z</b>	<b>25.96</b>	<b>65</b>	<b>50-65</b>	12-Sep-94	11.78	14.18
				30-Nov-94	10.76	15.20
				16-Feb-95	9.16	16.80
				08-May-95	9.85	16.11
				30-Aug-95	11.85	14.11
				19-Dec-95	10.89	15.07

**Table 2**  
**Well Construction and Groundwater Elevation Data**  
**East Baybridge Center**  
**Emeryville and Oakland, California**

Well Number	Well Elevation (1)	Well Depth (2)	Screened Interval (2)	Date Measured	Depth to Water	Groundwater Elevation (3)
				26-Feb-96	8.62	17.34
				29-Apr-96	9.91	16.05
				03-Sep-96	11.01	14.95
				13-Dec-96	10.31	15.65
				18-Feb-97	9.25	16.71
				26-May-97	13.00	12.96
				21-Aug-97	11.10	14.86
				02-Jan-98	NM	NM
				09-Mar-98	7.93	18.03
				14-Sep-98	10.72	15.24
				25-Mar-99	9.04	16.92
				21-Sep-99	10.50	15.46
				10-May-00	11.20	14.76
				24-Oct-00	11.76	14.20
				08-Feb-01	12.67	13.29
				08-May-01	10.16	15.80
				15-Aug-01	10.39	15.57

**Notes:**

- (1) Well elevation is in feet mean sea level as surveyed by Nolte and Associates in August 1994.
- (2) Well depth and screened interval are in feet below ground surface as measured at the time of well installation
- (3) Water level elevation is in feet mean sea level.
- (4) Monitoring Well MW-1 was abandoned in December 1996.
- NA Not applicable, well associated with extraction trench.
- NM Water level not measured.

**Table 3A: Summary of Sampling QA/QC  
East Baybridge Center, Emeryville and Oakland, California**

Site Name:	Site Address:	Monitoring Period Covered:
East Baybridge Center	East Baybridge Center Emeryville and Oakland, CA	October 1 through December 31, 2001
Sampling Performed By: M. Alberg		
Firm Name: LFR Levine - Fricke		
Firm Address: 1900 Powell Street, Emeryville, California		
Firm Contact: Ron Goloubow		
Firm Telephone Number: (510) 652-4500		
Were chain-of-custody forms completed for all samples?		<input checked="" type="checkbox"/> Yes <input type="checkbox"/> No
Were field parameters stabilized prior to taking samples?		<input checked="" type="checkbox"/> Yes <input type="checkbox"/> No
For VOCs samples, was there zero head space in sample containers?		<input checked="" type="checkbox"/> Yes <input type="checkbox"/> No
Were samples preserved according to analytical method?		<input checked="" type="checkbox"/> Yes <input type="checkbox"/> No
Were the required field QA/QC samples taken?		<input checked="" type="checkbox"/> Yes <input type="checkbox"/> No
For any questions above answered with "No," please provide an explanation:		

Data entered by Jck . QA/QC by REH

**Table 3B: Summary of Analytical QA/QC  
East Baybridge Center, Emeryville and Oakland, California**

Site Name:	Site Address:	Monitoring Period Covered:
East Baybridge Center	East Baybridge Center Emeryville and Oakland, CA	October 1 through December 31, 2001
Analysis Performed By:		
Lab Name:	Curtis & Tompkins, Ltd.	
Lab Address:	2323 Fifth Street, Berkeley, CA	
Lab Contact:	Tracy Babjar	
Lab Telephone Number:	510-486-0900	
Analytical Method Used: (check applicable methods)		
<input type="checkbox"/>	Total Dissolved Solids by EPA Method _____	
<input type="checkbox"/>	Bioassay 96-hr % survival by Standard Method	
<input type="checkbox"/>	Turbidity (NTU) by EPA Method _____	
<input type="checkbox"/>	Dissolved Oxygen (mg/l and % saturation) by Standard Method	
<input type="checkbox"/>	Hardness (mg/l CaCO <sub>3</sub> ) by EPA Method _____	
<input type="checkbox"/>	Arsenic by EPA Method _____	
<input type="checkbox"/>	Cadmium by EPA Method _____	
<input type="checkbox"/>	Chromium (total) by EPA Method _____	
<input type="checkbox"/>	Chromium (hexavalent)	
<input type="checkbox"/>	Copper by EPA Method _____	
<input type="checkbox"/>	Lead by EPA Method _____	
<input type="checkbox"/>	Mercury by EPA Method _____	
<input type="checkbox"/>	Nickel by EPA Method _____	
<input type="checkbox"/>	Selenium by EPA Method _____	
<input type="checkbox"/>	Silver by EPA Method _____	
<input type="checkbox"/>	Zinc by EPA Method _____	
<input type="checkbox"/>	Halogenated Volatile Organics by EPA Method 601 or 8010	
<input type="checkbox"/>	Aromatic and Unsaturated Volatile Organics by EPA 602 or 8020	
<input checked="" type="checkbox"/>	Volatile Organics by EPA Method 624 or 8240	
<input type="checkbox"/>	Semivolatile Organics by EPA Method 625 or 8270	
<input type="checkbox"/>	EDB and DBCP by EPA Method 504	
<input checked="" type="checkbox"/>	TPH gasoline by EPA Method 8015 modified	
<input checked="" type="checkbox"/>	TPH diesel by EPA Method 8015 modified	
Is the lab state-certified for the above analytical method(s)?	<input checked="" type="checkbox"/>	Yes <input type="checkbox"/> No
Were analyses performed according to standard methods?	<input checked="" type="checkbox"/>	Yes <input type="checkbox"/> No
Were sample holding times met?	<input checked="" type="checkbox"/>	Yes <input type="checkbox"/> No
Were all reported analytical results values above MDLs?	<input type="checkbox"/>	Yes <input checked="" type="checkbox"/> No
Were QA/QC samples (i.e., blanks, field replicates, spikes, and surrogates) analyzed in accordance and consistent with the analytical method?	<input checked="" type="checkbox"/>	Yes <input type="checkbox"/> No
Did QA/QC results meet all acceptance criteria?	<input checked="" type="checkbox"/>	Yes <input type="checkbox"/> No
Are QA/QC results and acceptance criteria on file?	<input checked="" type="checkbox"/>	Yes <input type="checkbox"/> No
For any questions above answered with "No", please provide an explanation: *		
Some results were below the MDL.		

\* The explanation should describe any modifications to standard methods and whether approved by Board staff, and describe corrective actions taken in response to any QA/QC results that fall outside acceptance criteria.

Table 4  
 Summary of Groundwater Quality Data  
 East Baybridge Center  
 Emeryville and Oakland, California  
 (concentrations expressed in parts per million [ppm])

Well ID	Notes	Date Sampled	Lab	TPHg	TPHd	Benzene	Toluene	Ethyl- benzene	Total Xylenes	TCE	1,1,1-TCA	PCE	1,1-DCE	1,1-DCA	1,2-DCA	cis/trans-1,2- DCE	Total VOCs		
Shallow Wells (20 to 25 feet below grade)																			
MW-1		13-Sep-94	AEN	<0.005	0.30	<0.0005	<0.0005	<0.0005	<0.0005	NA	NA	NA	NA	NA	NA	NA	NA		
		30-Nov-94	AEN	NA	0.10	<0.0005	<0.0005	<0.0005	<0.0005	<0.0005	<0.0005	<0.0005	<0.0005	<0.0005	<0.0005	<0.0005	<0.0005	ND	
		17-Feb-95	AEN	<0.05	0.08	<0.0005	<0.0005	<0.0005	<0.002	NA	NA	NA	NA	NA	NA	NA	NA	NA	
		09-May-95	AEN	<0.05	0.20	<0.0005	<0.0005	<0.0005	<0.002	NA	NA	NA	NA	NA	NA	NA	NA	NA	
		31-Aug-95	AEN	<0.05	0.30	<0.0005	<0.0005	<0.0005	<0.002	NA	NA	NA	NA	NA	NA	NA	NA	NA	
		27-Dec-95	AEN	<0.05	0.10	<0.0005	<0.0005	<0.0005	<0.002	NA	NA	NA	NA	NA	NA	NA	NA	NA	NA
		27-Feb-96	AEN	<0.05	0.18	<0.0005	<0.0005	<0.0005	<0.002	NA	NA	NA	NA	NA	NA	NA	NA	NA	NA
		01-May-96	AEN	<0.05	0.10	<0.0005	<0.0005	<0.0005	<0.002	NA	NA	NA	NA	NA	NA	NA	NA	NA	NA
		04-Sep-96	AEN	<0.05	0.25	<0.0005	<0.0005	<0.0005	<0.002	NA	NA	NA	NA	NA	NA	NA	NA	NA	NA
MW-2		01-Dec-94	AEN	7.10	NA	0.065	<0.01	0.13	0.47	NA	NA	NA	NA	NA	NA	NA	NA	NA	
		17-Feb-95	AEN	3.50	0.30	0.045	0.005	0.11	0.35	NA	NA	NA	NA	NA	NA	NA	NA	NA	
		09-May-95	AEN	3.50	0.20	0.025	0.009	0.085	0.25	NA	NA	NA	NA	NA	NA	NA	NA	NA	
		31-Aug-95	AEN	0.90	0.20	0.011	<0.0005	0.032	0.072	NA	NA	NA	NA	NA	NA	NA	NA	NA	
		20-Dec-95	AEN	2.60	<0.05	0.016	0.002	0.079	0.24	NA	NA	NA	NA	NA	NA	NA	NA	NA	
		27-Feb-96	AEN	4.10	0.20	0.076	0.0095	0.21	0.62	NA	NA	NA	NA	NA	NA	NA	NA	NA	
		01-May-96	AEN	2.40	0.23	0.039	0.0047	0.098	0.26	NA	NA	NA	NA	NA	NA	NA	NA	NA	
		04-Sep-96	AEN	0.54	0.22	0.0024	<0.0005	0.018	0.045	NA	NA	NA	NA	NA	NA	NA	NA	NA	
		17-Dec-96	A2AC	0.776	<0.010	0.004	0.009	0.011	0.019	NA	NA	NA	NA	NA	NA	NA	NA	NA	
		18-Feb-97	AEN	1.2	0.24	0.015	0.0009	0.057	0.140	NA	NA	NA	NA	NA	NA	NA	NA	NA	
		15-May-97	AEN	0.46	0.11	0.0033	<0.0005	0.035	0.059	NA	NA	NA	NA	NA	NA	NA	NA	NA	
	(44)	11-Dec-97	AEN	1.7	0.15	0.016	0.0010	0.061	0.106	NA	NA	NA	NA	NA	NA	NA	NA	NA	
		10-Mar-98	AEN	0.81	0.14	0.011	0.0006	0.045	0.086	NA	NA	NA	NA	NA	NA	NA	NA	NA	
		15-Sep-98	ENT	0.95	<0.05	0.0061	<0.0005	0.054	0.051	NA	NA	NA	NA	NA	NA	NA	NA	NA	
		02-Mar-99	CT	1.10	0.36	<0.0005	0.0016	0.042	0.052	NA	NA	NA	NA	NA	NA	NA	NA	NA	
		22-Sep-99	CT	0.29	0.082	<0.0005	<0.0005	0.019	0.015	NA	NA	NA	NA	NA	NA	NA	NA	NA	
		10-May-00	CT	0.92	0.085	<0.0005	0.0011	0.043	0.035	NA	NA	NA	NA	NA	NA	NA	NA	NA	
	12-Sep-00	CT	0.50	0.099	<0.0005	<0.0005	0.040	0.025	NA	NA	NA	NA	NA	NA	NA	NA	NA		
	08-May-01	CT	0.15	NA	<0.0005	<0.0005	0.012	0.0045	<0.0005	<0.0005	<0.0005	<0.0005	<0.0005	<0.0005	<0.0005	<0.0005	ND		
	07-Dec-01	CT	0.32	NA	<0.0005	<0.0005	0.017	0.0045	<0.0005	<0.0005	<0.0005	<0.0005	<0.0005	<0.0005	<0.0005	<0.0005	ND		
MW-3		12-Sep-94	AEN	NA	NA	NA	NA	NA	NA	<0.0005	<0.0005	<0.0005	<0.0005	<0.0005	<0.0005	<0.0005	ND		
		01-Dec-94	AEN	NA	0.07	NA	NA	NA	NA	<0.0005	<0.0005	<0.0005	<0.0005	<0.0005	<0.0005	<0.0005	<0.0005	ND	
		16-Feb-95	AEN	NA	NA	NA	NA	NA	NA	<0.0005	<0.0005	<0.0005	<0.0005	<0.0005	<0.0005	<0.0005	<0.0005	ND	
		08-May-95	AEN	NA	0.07	NA	NA	NA	NA	<0.0005	<0.0005	<0.0005	<0.0005	<0.0005	<0.0005	<0.0005	<0.0005	ND	
		31-Aug-95	AEN	NA	NA	NA	NA	NA	NA	<0.0005	<0.0005	<0.0005	<0.0005	<0.0005	<0.0005	<0.0005	<0.0005	ND	
		20-Dec-95	AEN	NA	<0.05	NA	NA	NA	NA	<0.0005	<0.0005	<0.0005	<0.0005	<0.0005	<0.0005	<0.0005	<0.0005	ND	
		27-Feb-96	AEN	NA	NA	NA	NA	NA	NA	<0.0005	<0.0005	<0.0005	<0.0005	<0.0005	<0.0005	<0.0005	<0.0005	ND	
		30-Apr-96	AEN	NA	NA	NA	NA	NA	NA	<0.0005	<0.0005	<0.0005	<0.0005	<0.0005	<0.0005	<0.0005	<0.0005	ND	
		04-Sep-96	AEN	NA	0.11	NA	NA	NA	NA	<0.0005	<0.0005	<0.0005	<0.0005	<0.0005	<0.0005	<0.0005	<0.0005	ND	
		17-Dec-96	A2AC	NA	<0.010	NA	NA	NA	NA	<0.001	<0.001	<0.001	<0.001	<0.001	<0.001	<0.001	<0.001	ND	
		18-Feb-97	AEN	NA	NA	NA	NA	NA	NA	<0.0005	<0.0005	<0.0005	<0.0005	<0.0005	<0.0005	<0.0005	<0.0005	ND	
	dup	18-Feb-97	AEN	NA	NA	NA	NA	NA	NA	<0.0005	<0.0005	<0.0005	<0.0005	<0.0005	<0.0005	<0.0005	<0.0005	ND	
		15-May-97	AEN	NA	0.08	NA	NA	NA	NA	<0.0005	<0.0005	<0.0005	<0.0005	<0.0005	<0.0005	<0.0005	<0.0005	ND	
	21-Aug-97	AEN	NA	NA	NA	NA	NA	NA	<0.0005	<0.0005	<0.0005	<0.0005	<0.0005	<0.0005	<0.0005	<0.0005	ND		

Table 4  
 Summary of Groundwater Quality Data  
 East Baybridge Center  
 Emeryville and Oakland, California  
 (concentrations expressed in parts per million (ppm))

Well ID	Notes	Date Sampled	Lab	TPHg	TPHd	Benzene	Toluene	Ethyl- benzene	Total Xylenes	TCE	1,1,1-TCA	PCE	1,1-DCE	1,1-DCA	1,2-DCA	cis/trans-1,2- DCE	Total VOCs
		11-Dec-97	AEN	NA	<0.05	NA	NA	NA	NA	<0.0005	<0.0005	<0.0005	<0.0005	<0.0005	<0.0005	<0.0005	ND
		10-Mar-98	AEN	NA	<0.05	NA	NA	NA	NA	<0.0005	<0.0005	<0.0005	<0.0005	<0.0005	<0.0005	<0.0005	ND
		15-Sep-98	ENT	NA	<0.05	NA	NA	NA	NA	<0.0005	<0.0005	<0.0005	<0.0005	<0.0005	<0.0005	<0.0005	ND
		03-Mar-99	CT	NA	<0.05	NA	NA	NA	NA	<0.0005	<0.0005	<0.0005	<0.0005	<0.0005	<0.0005	<0.0005	ND
		22-Sep-99	CT	NA	<0.05	NA	NA	NA	NA	<0.0005	<0.0005	<0.0005	<0.0005	<0.0005	<0.0005	<0.0005	ND
		09-May-00	CT	NA	<0.05	NA	NA	NA	NA	<0.0005	<0.0005	<0.0005	<0.0005	<0.0005	<0.0005	<0.0005	ND
		12-Sep-00	CT	NA	<0.05	NA	NA	NA	NA	<0.0005	<0.0005	<0.0005	<0.0005	0.0012	<0.0005	<0.0005	0.0012
		08-May-01	CT	<0.05	NA	<0.0005	<0.0005	<0.0005	<0.0005	<0.0005	<0.0005	<0.0005	<0.0005	<0.0005	<0.0005	<0.0005	ND
		07-Dec-01	CT	<0.05	NA	<0.0005	<0.0005	<0.0005	<0.0005	<0.0005	<0.0005	<0.0005	<0.0005	<0.0005	<0.0005	<0.0005	ND
MW-4		01-Dec-94	AEN	NA	0.09	NA	NA	NA	NA	NA	NA	NA	NA	NA	NA	NA	NA
		08-May-95	AEN	NA	0.10	NA	NA	NA	NA	<0.0005	<0.0005	<0.0005	<0.0005	0.004	<0.0005	<0.0005	0.004
		20-Dec-95	AEN	NA	0.09	NA	NA	NA	NA	<0.0005	<0.0005	<0.0005	<0.0005	0.001	<0.0005	<0.0005	0.001
		30-Apr-96	AEN	NA	NA	NA	NA	NA	NA	<0.0005	<0.0005	<0.0005	<0.0005	0.0022	<0.0005	<0.0005	0.0022
		04-Sep-96	AEN	NA	0.14	NA	NA	NA	NA	NA	NA	NA	NA	NA	NA	NA	NA
	(27)	17-Dec-96	A2AC	NA	<0.010	NA	NA	NA	NA	<0.001	<0.001	<0.001	0.002	0.001	<0.001	0.001	0.004
		15-May-97	AEN	NA	0.45	NA	NA	NA	NA	<0.0005	<0.0005	<0.0005	<0.0005	0.0013	<0.0005	<0.0005	0.0013
		11-Dec-97	AEN	NA	0.08	NA	NA	NA	NA	<0.0005	<0.0005	<0.0005	<0.0005	0.0008	<0.0005	<0.0005	0.0008
		10-Mar-98	AEN	NA	0.08	NA	NA	NA	NA	<0.0005	<0.0005	<0.0005	<0.0005	<0.0005	<0.0005	<0.0005	ND
		15-Sep-98	ENT	NA	<0.05	NA	NA	NA	NA	<0.0005	<0.0005	<0.0005	<0.0005	<0.0005	<0.0005	<0.0005	ND
		03-Mar-99	CT	NA	0.071	NA	NA	NA	NA	<0.0005	<0.0005	<0.0005	<0.0005	0.0005	<0.0005	<0.0005	0.0005
		22-Sep-99	CT	NA	0.073	NA	NA	NA	NA	<0.0005	<0.0005	<0.0005	<0.0005	<0.0005	<0.0005	<0.0005	ND
		09-May-00	CT	NA	<0.05	NA	NA	NA	NA	<0.0005	<0.0005	<0.0005	<0.0005	<0.0005	<0.0005	<0.0005	ND
		11-Sep-00	CT	NA	<0.05	NA	NA	NA	NA	<0.0005	<0.0005	<0.0005	<0.0005	<0.0005	<0.0005	<0.0005	0.0005
		09-Feb-01	CT	NA	0.072	NA	NA	NA	NA	<0.0005	<0.0005	<0.0005	<0.0005	<0.0005	<0.0005	<0.0005	<0.0005
		09-May-01	CT	NA	NA	NA	NA	NA	NA	<0.0005	<0.0005	<0.0005	<0.0005	<0.0005	<0.0005	<0.0005	ND
		15-Aug-01	CT	NA	0.081	NA	NA	NA	NA	<0.0005	<0.0005	<0.0005	<0.0005	<0.0005	<0.0005	<0.0005	ND
		06-Dec-01	CT	NA	NA	NA	NA	NA	NA	<0.0005	<0.0005	<0.0005	<0.0005	<0.0005	<0.0005	<0.0005	ND
MW-5		13-Sep-94	AEN	NA	NA	NA	NA	NA	NA	<0.0005	0.001	0.0007	0.003	0.002	<0.0005	<0.0005	0.0067
		01-Dec-94	AEN	NA	0.05	NA	NA	NA	NA	<0.0005	0.0007	0.0005	0.004	0.003	<0.0005	<0.0005	0.0082
		16-Feb-95	AEN	NA	NA	NA	NA	NA	NA	<0.0005	0.001	0.002	0.008	0.003	<0.0005	<0.0005	0.014
		08-May-95	AEN	NA	0.09	NA	NA	NA	NA	0.0005	0.002	0.002	0.016	0.005	<0.0005	<0.0005	0.0255
		31-Aug-95	AEN	NA	NA	NA	NA	NA	NA	0.0007	0.002	0.002	0.013	0.004	<0.0005	<0.0005	0.0217
		20-Dec-95	AEN	NA	0.1	NA	NA	NA	NA	<0.0005	0.001	0.0008	0.009	0.002	<0.0005	<0.0005	0.0128
		27-Feb-96	AEN	NA	NA	NA	NA	NA	NA	<0.0005	0.0008	0.0024	0.010	0.0029	<0.0005	<0.0005	0.0161
		30-Apr-96	AEN	NA	NA	NA	NA	NA	NA	<0.0005	<0.0005	0.001	0.0051	0.0021	<0.0005	<0.0005	0.0082
		04-Sep-96	AEN	NA	0.24	NA	NA	NA	NA	<0.0005	<0.0005	0.0010	0.0051	0.0022	<0.0005	<0.0005	0.0083
		17-Dec-96	A2AC	NA	NA	NA	NA	NA	NA	<0.001	<0.001	0.002	0.005	0.002	<0.001	<0.001	0.009
		18-Feb-97	AEN	NA	NA	NA	NA	NA	NA	<0.0005	<0.0005	0.0009	0.0079	0.002	<0.0005	<0.0005	0.0108
		15-May-97	AEN	NA	0.07	NA	NA	NA	NA	0.0006	0.0005	0.0021	0.019	0.0039	<0.0005	<0.0005	0.0261
		21-Aug-97	AEN	NA	NA	NA	NA	NA	NA	0.0006	<0.0005	0.0026	0.019	0.0041	<0.0005	<0.0005	0.0263
	duplicate	21-Aug-97	AEN	NA	NA	NA	NA	NA	NA	0.0005	<0.0005	0.0024	0.015	0.0038	<0.0005	<0.0005	0.0217
		11-Dec-97	AEN	NA	0.06	NA	NA	NA	NA	<0.0005	<0.0005	0.0019	0.012	0.0029	<0.0005	<0.0005	0.0168
		10-Mar-98	AEN	NA	0.05	NA	NA	NA	NA	<0.0005	<0.0005	0.0015	0.0071	0.0024	<0.0005	<0.0005	0.011
		15-Sep-98	ENT	NA	<0.05	NA	NA	NA	NA	<0.0005	<0.0005	0.0005	<0.0005	0.0015	<0.0005	<0.0005	0.002
		02-Mar-99	CT	NA	<0.05	NA	NA	NA	NA	<0.0005	<0.0005	0.0014	0.0092	0.0023	<0.0005	<0.0005	0.0129



Table 4  
 Summary of Groundwater Quality Data  
 East Baybridge Center  
 Emeryville and Oakland, California  
 (concentrations expressed in parts per million [ppm])

Well ID	Notes	Date Sampled	Lab	TPHg	TPHd	Benzene	Toluene	Ethyl-benzene	Total Xylenes	TCE	1,1,1-TCA	PCE	1,1-DCE	1,1-DCA	1,2-DCA	cis/trans-1,2-DCE	Total VOCs
		22-Sep-99	CT	NA	<0.05	NA	NA	NA	NA	<0.0005	<0.0005	0.0019	0.0048	0.0014	<0.0005	<0.0005	0.0081
		09-May-00	CT	NA	<0.05	NA	NA	NA	NA	<0.0005	<0.0005	0.0009	0.0052	0.0013	<0.0005	<0.0005	0.0074
		11-Sep-00	CT	NA	<0.05	NA	NA	NA	NA	<0.0005	<0.0005	0.0013	0.0057	0.0014	<0.0005	<0.0005	0.0084
		09-Feb-01	CT	NA	<0.05	NA	NA	NA	NA	<0.0005	<0.0005	0.0014	0.011	0.0019	<0.0005	<0.0005	0.0143
		09-May-01	CT	NA	NA	NA	NA	NA	NA	<0.0005	<0.0005	0.0014	0.0095	0.0014	<0.0005	<0.0005	0.0123
		15-Aug-01	CT	NA	0.082	NA	NA	NA	NA	<0.0005	<0.0005	0.0015	0.0099	0.0016	<0.0005	<0.0005	0.013
	(78)	06-Dec-01	CT	NA	NA	NA	NA	NA	NA	0.001	0.0005	0.0032	0.014	0.0019	<0.0005	<0.0005	0.0211
MW-6	(2)	13-Sep-94	AEN	NA	NA	NA	NA	NA	NA	0.0005	0.041	<0.0005	0.280	0.005	0.001	0.001	0.3285
	(6)	01-Dec-94	AEN	NA	0.08	NA	NA	NA	NA	0.0006	0.041	<0.0005	0.300	0.004	<0.0005	<0.0005	0.3456
		16-Feb-95	AEN	NA	NA	NA	NA	NA	NA	<0.003	0.039	<0.003	0.280	0.003	<0.003	<0.003	0.322
	duplicate	16-Feb-95	AEN	NA	NA	NA	NA	NA	NA	<0.003	0.045	<0.003	0.290	0.004	<0.003	<0.003	0.339
		09-May-95	AEN	NA	0.20	NA	NA	NA	NA	<0.003	0.031	<0.003	0.260	0.003	<0.003	<0.003	0.294
		31-Aug-95	AEN	NA	NA	NA	NA	NA	NA	<0.003	0.032	<0.003	0.270	0.004	<0.003	<0.003	0.306
		28-Dec-95	AEN	NA	0.1	NA	NA	NA	NA	<0.003	0.040	<0.003	0.280	0.004	<0.003	<0.003	0.324
		27-Feb-96	AEN	NA	NA	NA	NA	NA	NA	<0.005	0.031	<0.005	0.270	<0.005	<0.005	<0.005	0.301
		01-May-96	AEN	NA	NA	NA	NA	NA	NA	<0.003	0.026	<0.003	<0.200	0.003	<0.003	<0.003	0.029
		04-Sep-96	AEN	NA	0.17	NA	NA	NA	NA	<0.003	0.033	<0.003	0.330	0.005	<0.003	<0.003	0.368
		17-Dec-96	A2AC	NA	<0.010	NA	NA	NA	NA	0.010	0.060	<0.001	0.310	<0.001	<0.001	<0.001	0.38
		18-Feb-97	AEN	NA	NA	NA	NA	NA	NA	<0.003	0.029	<0.003	0.260	0.003	<0.003	<0.003	0.292
		15-May-97	AEN	NA	0.07	NA	NA	NA	NA	<0.003	0.018	<0.003	0.200	0.004	<0.003	<0.003	0.222
		21-Aug-97	AEN	NA	NA	NA	NA	NA	NA	<0.003	0.019	<0.003	0.230	0.003	<0.003	<0.003	0.252
		11-Dec-97	AEN	NA	0.07	NA	NA	NA	NA	<0.003	0.020	<0.003	0.210	0.004	<0.003	<0.003	0.234
		09-Mar-98	AEN	NA	0.08	NA	NA	NA	NA	<0.003	0.015	<0.003	0.180	0.003	<0.003	<0.003	0.198
		14-Sep-98	ENT	NA	<0.05	NA	NA	NA	NA	<0.003	0.0099	<0.003	0.210	0.0048	<0.003	<0.003	0.2247
		02-Mar-99	CT	NA	<0.05	NA	NA	NA	NA	<0.001	0.015	<0.001	0.210	0.0045	<0.001	<0.001	0.2295
	(61)	22-Sep-99	CT	NA	0.059	NA	NA	NA	NA	<0.001	0.015	<0.001	0.240	0.0045	<0.001	<0.001	0.2624
	(63)	10-May-00	CT	NA	<0.05	NA	NA	NA	NA	<0.001	0.0098	<0.001	0.190	0.0033	<0.001	<0.001	0.2031
	(69)	11-Sep-00	CT	NA	<0.05	NA	NA	NA	NA	<0.0005	0.011	<0.0005	0.180	0.0034	<0.0005	<0.0005	0.1969
	(72)	09-Feb-01	CT	NA	0.059	NA	NA	NA	NA	<0.0005	0.0086	<0.0005	0.160	0.0033	<0.0005	<0.0005	0.1719
		08-May-01	CT	NA	NA	NA	NA	NA	NA	<0.0005	<0.0005	<0.0005	<0.0005	<0.0005	<0.0005	<0.0005	ND
	(77)	15-Aug-01	CT	NA	0.062	NA	NA	NA	NA	<0.0005	0.009	<0.0005	0.140	0.0028	<0.0005	<0.0005	0.1538
	(79)	06-Dec-01	CT	NA	NA	NA	NA	NA	NA	<0.0005	0.006	<0.0005	0.120	0.0024	<0.0005	<0.0005	0.1298
MW-7		12-Sep-94	AEN	NA	NA	NA	NA	NA	NA	<0.0005	0.017	<0.0005	0.160	0.003	0.0009	<0.0005	0.1809
		30-Nov-94	AEN	NA	NA	NA	NA	NA	NA	<0.0005	0.016	<0.0005	0.170	0.003	<0.0005	<0.0005	0.189
		16-Feb-95	AEN	NA	NA	NA	NA	NA	NA	<0.003	0.011	<0.003	0.120	<0.003	<0.003	<0.003	0.131
		09-May-95	AEN	NA	0.09	NA	NA	NA	NA	<0.0005	0.015	<0.0005	0.180	0.004	<0.0005	<0.0005	0.199
		30-Aug-95	AEN	NA	NA	NA	NA	NA	NA	<0.003	0.012	<0.003	0.140	0.003	<0.003	<0.003	0.155
		20-Dec-95	AEN	NA	<0.05	NA	NA	NA	NA	<0.003	0.011	<0.003	0.170	<0.003	<0.003	<0.003	0.181
		27-Feb-96	AEN	NA	NA	NA	NA	NA	NA	<0.003	0.018	<0.003	0.210	0.0035	<0.003	<0.003	0.2315
	duplicate	27-Feb-96	AEN	NA	NA	NA	NA	NA	NA	<0.003	0.017	<0.003	0.210	0.003	<0.003	<0.003	0.23
		30-Apr-96	AEN	NA	NA	NA	NA	NA	NA	<0.003	0.016	<0.003	0.220	0.003	<0.003	<0.003	0.239
		03-Sep-96	AEN	NA	0.11	NA	NA	NA	NA	<0.003	0.021	<0.003	0.290	0.004	<0.003	<0.003	0.315
		17-Dec-96	A2AC	NA	<0.010	NA	NA	NA	NA	<0.001	0.050	<0.001	0.280	<0.001	<0.001	<0.001	0.33
		19-Feb-97	AEN	NA	NA	NA	NA	NA	NA	<0.003	0.007	<0.003	0.150	<0.003	<0.003	<0.003	0.157
		15-May-97	AEN	NA	<0.05	NA	NA	NA	NA	<0.003	0.014	<0.003	0.230	0.005	<0.003	<0.003	0.249

**Table 4**  
**Summary of Groundwater Quality Data**  
**East Baybridge Center**  
**Emeryville and Oakland, California**  
*(concentrations expressed in parts per million [ppm])*

Well ID	Notes	Date Sampled	Lab	TPHg	TPHd	Benzene	Toluene	Ethyl-benzene	Total Xylenes	TCE	1,1,1-TCA	PCE	1,1-DCE	1,1-DCA	1,2-DCA	cis/trans-1,2-DCE	Total VOCs
		21-Aug-97	AEN	NA	NA	NA	NA	NA	NA	<0.003	0.013	<0.003	0.250	0.005	<0.003	<0.003	0.268
		11-Dec-97	AEN	NA	0.06	NA	NA	NA	NA	<0.003	0.014	<0.003	0.220	0.006	<0.003	<0.003	0.24
		09-Mar-98	AEN	NA	0.05	NA	NA	NA	NA	<0.003	0.010	<0.003	0.170	0.005	<0.003	<0.003	0.185
		15-Sep-98	ENT	NA	<0.05	NA	NA	NA	NA	<0.0005	0.0097	<0.0005	0.270	0.008	<0.0005	<0.0005	0.2876
	duplicate	15-Sep-98	ENT	NA	<0.05	NA	NA	NA	NA	<0.0005	0.0064	<0.0005	0.190	0.0089	<0.0005	<0.0005	0.2053
	(51)	02-Mar-99	CT	NA	0.055	NA	NA	NA	NA	<0.0005	0.011	<0.0005	0.200	0.0081	<0.0005	<0.0005	0.2263
	(60)	22-Sep-99	CT	NA	0.076	NA	NA	NA	NA	0.0012	0.010	<0.0005	0.220	0.0076	<0.0005	<0.0005	0.247
	(64)	09-May-00	CT	NA	<0.05	NA	NA	NA	NA	0.0011	0.008	<0.0005	0.220	0.0062	<0.0005	<0.0005	0.243
	(67)	11-Sep-00	CT	NA	NA	NA	NA	NA	NA	<0.0005	0.004	<0.0005	0.120	0.0043	<0.0005	<0.0005	0.1349
	duplicate	11-Sep-00	CT	NA	NA	NA	NA	NA	NA	<0.0005	0.0043	<0.0005	0.120	0.0044	<0.0005	<0.0005	0.135
	(73)	09-Feb-01	CT	NA	0.056	NA	NA	NA	NA	<0.0005	0.0041	<0.0005	0.140	0.0051	<0.0005	<0.0005	0.1544
		08-May-01	CT	NA	NA	NA	NA	NA	NA	<0.0005	<0.0005	<0.0005	0.011	0.0007	<0.0005	<0.0005	0.0117
		15-Aug-01	CT	NA	0.088	NA	NA	NA	NA	<0.0005	0.0079	<0.0005	0.170	0.006	<0.0005	<0.0005	0.1989
	(80)	06-Dec-01	CT	NA	NA	NA	NA	NA	NA	<0.0005	0.0056	<0.0005	0.190	0.0065	<0.0005	<0.0005	0.2021
MW-8	(3)	13-Sep-94	AEN	NA	NA	NA	NA	NA	NA	<0.0005	<0.0005	<0.0005	<0.0005	0.0005	<0.0005	<0.0005	0.0005
		02-Dec-94	AEN	NA	NA	NA	NA	NA	NA	<0.0005	<0.0005	<0.0005	<0.0005	<0.0005	<0.0005	<0.0005	ND
		16-Feb-95	AEN	NA	NA	NA	NA	NA	NA	<0.0005	<0.0005	<0.0005	<0.0005	<0.0005	<0.0005	<0.0005	ND
		09-May-95	AEN	NA	NA	NA	NA	NA	NA	<0.0005	<0.0005	<0.0005	<0.0005	<0.0005	<0.0005	<0.0005	ND
		31-Aug-95	AEN	NA	NA	NA	NA	NA	NA	<0.0005	<0.0005	<0.0005	<0.0005	<0.0005	<0.0005	<0.0005	ND
		20-Dec-95	AEN	NA	NA	NA	NA	NA	NA	<0.0005	<0.0005	<0.0005	<0.0005	<0.0005	<0.0005	<0.0005	ND
		27-Feb-96	AEN	NA	NA	NA	NA	NA	NA	<0.0005	<0.0005	<0.0005	<0.0005	<0.0005	<0.0005	<0.0005	ND
		29-Apr-96	AEN	NA	NA	NA	NA	NA	NA	<0.0005	<0.0005	<0.0005	<0.0005	<0.0005	<0.0005	<0.0005	ND
		04-Sep-96	AEN	NA	NA	NA	NA	NA	NA	<0.0005	<0.0005	<0.0005	<0.0005	<0.0005	<0.0005	<0.0005	ND
		17-Dec-96	A2AC	NA	NA	NA	NA	NA	NA	<0.001	<0.001	<0.001	<0.001	<0.001	<0.001	<0.001	ND
		19-Feb-97	AEN	NA	NA	NA	NA	NA	NA	<0.0005	<0.0005	<0.0005	<0.0005	<0.0005	<0.0005	<0.0005	ND
		15-May-97	AEN	NA	NA	NA	NA	NA	NA	<0.0005	<0.0005	<0.0005	<0.0005	<0.0005	<0.0005	<0.0005	ND
	duplicate	15-May-97	AEN	NA	NA	NA	NA	NA	NA	<0.0005	<0.0005	<0.0005	<0.0005	<0.0005	<0.0005	<0.0005	ND
		21-Aug-97	AEN	NA	NA	NA	NA	NA	NA	<0.0005	<0.0005	<0.0005	<0.0005	<0.0005	<0.0005	<0.0005	ND
		11-Dec-97	AEN	NA	NA	NA	NA	NA	NA	<0.0005	<0.0005	<0.0005	<0.0005	<0.0005	<0.0005	<0.0005	ND
		10-Mar-98	AEN	NA	NA	NA	NA	NA	NA	<0.0005	<0.0005	<0.0005	<0.0005	<0.0005	<0.0005	<0.0005	ND
		15-Sep-98	ENT	NA	NA	NA	NA	NA	NA	<0.0005	<0.0005	<0.0005	<0.0005	<0.0005	<0.0005	<0.0005	ND
		02-Mar-99	CT	NA	NA	NA	NA	NA	NA	<0.0005	<0.0005	<0.0005	<0.0005	<0.0005	<0.0005	<0.0005	ND
		21-Sep-99	CT	NA	NA	NA	NA	NA	NA	<0.0005	<0.0005	<0.0005	<0.0005	<0.0005	<0.0005	<0.0005	ND
		09-May-00	CT	NA	NA	NA	NA	NA	NA	<0.0005	<0.0005	<0.0005	<0.0005	<0.0005	<0.0005	<0.0005	ND
		12-Sep-00	CT	NA	NA	NA	NA	NA	NA	<0.0005	<0.0005	<0.0005	<0.0005	<0.0005	<0.0005	<0.0005	ND
		06-Dec-01	CT	NA	NA	NA	NA	NA	NA	<0.0005	<0.0005	<0.0005	<0.0005	<0.0005	<0.0005	<0.0005	ND
MW-9		12-Sep-94	AEN	NA	NA	NA	NA	NA	NA	<0.0005	0.017	<0.0005	0.120	0.0005	0.006	<0.0005	0.1435
	duplicate	12-Sep-94	AEN	NA	NA	NA	NA	NA	NA	<0.0005	0.015	<0.0005	0.120	0.0005	0.009	<0.0005	0.1445
		30-Nov-94	AEN	NA	NA	NA	NA	NA	NA	<0.0005	0.016	<0.0005	0.150	0.0005	<0.0005	<0.0005	0.1665
	duplicate	30-Nov-94	AEN	NA	NA	NA	NA	NA	NA	<0.0005	0.016	<0.0005	0.160	0.0005	<0.0005	<0.0005	0.1765
		16-Feb-95	AEN	NA	NA	NA	NA	NA	NA	<0.003	0.014	<0.003	0.120	<0.003	<0.003	<0.003	0.134
		08-May-95	AEN	NA	NA	NA	NA	NA	NA	<0.0005	0.013	<0.0005	0.110	0.005	<0.0005	<0.0005	0.128
		31-Aug-95	AEN	NA	NA	NA	NA	NA	NA	<0.003	0.013	<0.003	0.130	0.004	<0.003	<0.003	0.147
		20-Dec-95	AEN	NA	NA	NA	NA	NA	NA	<0.003	0.009	<0.003	0.092	<0.003	<0.003	<0.003	0.101
		27-Feb-96	AEN	NA	NA	NA	NA	NA	NA	<0.0005	0.0099	<0.0005	0.087	0.0035	<0.0005	<0.0005	0.1004

**Table 4**  
**Summary of Groundwater Quality Data**  
**East Baybridge Center**  
**Emeryville and Oakland, California**  
*(concentrations expressed in parts per million [ppm])*

Well ID	Notes	Date Sampled	Lab	TPHg	TPHd	Benzene	Toluene	Ethyl- benzene	Total Xylenes	TCE	1,1,1-TCA	PCE	1,1-DCE	1,1-DCA	1,2-DCA	cis/trans-1,2- DCE	Total VOCs
duplicate		03-Sep-96	AEN	NA	NA	NA	NA	NA	NA	<0.0005	0.0083	<0.0005	0.099	0.0030	<0.0005	<0.0005	0.1103
		03-Sep-96	AEN	NA	NA	NA	NA	NA	NA	<0.0005	0.0078	<0.0005	0.097	0.0026	<0.0005	<0.0005	0.1074
		17-Dec-96	A2AC	NA	NA	NA	NA	NA	NA	<0.001	0.005	<0.001	0.059	0.002	<0.001	<0.001	0.066
	dup		17-Dec-96	A2AC	NA	NA	NA	NA	NA	<0.001	0.006	<0.001	0.064	0.002	<0.001	<0.001	0.072
		19-Feb-97	AEN	NA	NA	NA	NA	NA	NA	<0.0005	0.008	<0.0005	0.087	0.0023	<0.0005	<0.0005	0.0973
		15-May-97	AEN	NA	NA	NA	NA	NA	NA	<0.0005	0.0056	<0.0005	0.063	0.0025	<0.0005	<0.0005	0.0711
		22-Aug-97	AEN	NA	NA	NA	NA	NA	NA	<0.0005	0.0080	<0.0005	0.067	0.0022	<0.0005	<0.0005	0.0772
		11-Dec-97	AEN	NA	NA	NA	NA	NA	NA	<0.0005	0.0050	<0.0005	0.058	0.0022	<0.0005	<0.0005	0.0652
		10-Mar-98	AEN	NA	NA	NA	NA	NA	NA	<0.0005	0.0060	<0.0005	0.084	0.0018	<0.0005	<0.0005	0.0918
		14-Sep-98	ENT	NA	NA	NA	NA	NA	NA	<0.0005	0.0037	<0.0005	0.078	0.0030	<0.0005	<0.0005	0.0847
		02-Mar-99	CT	NA	NA	NA	NA	NA	NA	<0.0005	0.0049	<0.0005	0.078	0.0022	<0.0005	<0.0005	0.0851
		22-Sep-99	CT	NA	NA	NA	NA	NA	NA	<0.0005	0.0052	0.0013	0.091	0.0022	<0.0005	<0.0005	0.0997
		08-Feb-01	CT	NA	<.05	NA	NA	NA	NA	<0.0005	0.0020	<0.0005	0.044	0.0014	<0.0005	<0.0005	0.0474
		08-May-01	CT	NA	NA	NA	NA	NA	NA	<0.0005	0.0016	<0.0005	0.032	0.0014	<0.0005	<0.0005	0.035
		24-Sep-01	CT	NA	NA	0.072	NA	NA	NA	<0.0005	0.0017	<0.0005	0.042	0.0015	<0.0005	<0.0005	0.0452
	07-Dec-01	CT	NA	NA	NA	NA	NA	NA	<0.0005	0.0016	<0.0005	0.050	0.0019	<0.0005	<0.0005	0.0535	
MW-10R		20-Dec-95	AEN	NA	NA	NA	NA	NA	NA	0.910	<0.005	0.007	<0.005	<0.005	<0.005	0.222	1.139
	(19)	29-Apr-96	AEN	NA	NA	NA	NA	NA	NA	0.650	<0.005	<0.005	<0.005	<0.005	<0.005	<0.005	0.65
	(28)	17-Dec-96	A2AC	NA	NA	NA	NA	NA	NA	0.610	<0.001	<0.001	<0.001	<0.001	<0.001	0.160	0.77
		15-May-97	AEN	NA	NA	NA	NA	NA	NA	0.500	<0.005	<0.005	<0.005	<0.005	<0.005	0.156	0.656
	(47)	12-Dec-97	AEN	NA	NA	NA	NA	NA	NA	0.420	<0.005	<0.005	<0.005	<0.005	<0.005	0.125	0.545
		10-Mar-98	AEN	NA	NA	NA	NA	NA	NA	0.500	<0.005	<0.005	<0.005	<0.005	<0.005	0.140	0.64
		15-Sep-98	ENT	NA	NA	NA	NA	NA	NA	0.550	<0.005	<0.005	<0.005	<0.005	<0.005	0.032	0.582
	(55)	03-Mar-99	CT	NA	NA	NA	NA	NA	NA	0.390	0.0011	0.0045	0.0019	<0.0005	0.0005	0.141	0.539
	(58)	21-Sep-99	CT	NA	NA	NA	NA	NA	NA	0.400	<0.0017	0.0065	0.0020	<0.0017	<0.0017	0.113	0.5315
	(65)	09-May-00	CT	NA	NA	NA	NA	NA	NA	0.340	<0.0013	0.004	0.0016	<0.0013	<0.0013	0.108	0.4636
	duplicate		09-May-00	CT	NA	NA	NA	NA	NA	0.320	<0.0013	0.0033	0.0170	<0.0013	<0.0013	0.100	0.4495
	(70)	12-Sep-00	CT	NA	NA	NA	NA	NA	NA	0.410	<0.0017	0.0037	0.0021	<0.0017	<0.0017	0.144	0.5728
	(74)	08-May-01	CT	NA	NA	NA	NA	NA	NA	0.340	<0.0017	0.0033	<0.0017	<0.0017	<0.0017	0.124	0.4783
	(81)	06-Dec-01	CT	NA	NA	NA	NA	NA	NA	0.290	<0.0010	0.0026	0.0012	<0.0010	<0.0010	0.108	0.4083
	MW-12R		27-Dec-95	AEN	NA	0.2	NA	NA	NA	NA	0.003	<0.0005	<0.0005	<0.0005	<0.0005	<0.0005	0.002
		27-Feb-96	AEN	<0.05	0.36	<0.0005	<0.0005	<0.0005	<0.002	NA	NA	NA	NA	NA	NA	NA	NA
(20)		30-Apr-96	AEN	<0.05	0.23	<0.0005	<0.0005	<0.0005	<0.002	0.0025	<0.0005	<0.0005	<0.0005	0.0024	<0.0005	<0.0005	0.0049
		17-Dec-96	A2AC	NA	<0.010	NA	NA	NA	NA	0.001	<0.001	<0.001	<0.001	0.005	<0.001	0.004	0.01
		15-May-97	AEN	NA	0.29	NA	NA	NA	NA	0.0009	<0.0005	<0.0005	<0.0005	0.0059	<0.0005	0.0007	0.0075
		12-Dec-97	AEN	NA	0.44	NA	NA	NA	NA	<0.0005	<0.0005	<0.0005	<0.0005	0.0014	<0.0005	<0.0005	0.0014
		10-Mar-98	AEN	NA	0.49	NA	NA	NA	NA	<0.0005	<0.0005	<0.0005	<0.0005	<0.0005	<0.0005	<0.0005	ND
		16-Sep-98	ENT	NA	<0.05	NA	NA	NA	NA	<0.0005	<0.0005	<0.0005	<0.0005	<0.0005	<0.0005	<0.0005	ND
		03-Mar-99	CT	NA	0.47	NA	NA	NA	NA	<0.0005	<0.0005	<0.0005	<0.0005	0.0006	<0.0005	<0.0005	0.0006
		22-Sep-99	CT	NA	0.46	NA	NA	NA	NA	0.0006	<0.0005	<0.0005	<0.0005	0.0013	<0.0005	0.0009	0.0028
		09-May-00	CT	NA	0.38	NA	NA	NA	NA	<0.0005	<0.0005	<0.0005	<0.0005	<0.0005	<0.0005	<0.0005	<0.0005
		12-Sep-00	CT	NA	0.43	NA	NA	NA	NA	<0.0005	<0.0005	<0.0005	<0.0005	0.001	<0.0005	0.0007	0.0017
		08-May-01	CT	NA	NA	NA	NA	NA	NA	<0.0005	<0.0005	<0.0005	<0.0005	<0.0005	<0.0005	<0.0005	ND
		06-Dec-01	CT	NA	NA	NA	NA	NA	NA	<0.0005	<0.0005	<0.0005	<0.0005	<0.0005	<0.0005	<0.0005	ND

**Table 4**  
**Summary of Groundwater Quality Data**  
**East Baybridge Center**  
**Emeryville and Oakland, California**  
*(concentrations expressed in parts per million (ppm))*

Well ID	Notes	Date Sampled	Lab	TPHg	TPHd	Benzene	Toluene	Ethyl- benzene	Total Xylenes	TCE	1,1,1-TCA	PCE	1,1-DCE	1,1-DCA	1,2-DCA	cis/trans-1,2- DCE	Total VOCs
MW-31R		27-Dec-95	AEN	NA	0.3	NA	NA	NA	NA	0.018	<0.0005	<0.0005	<0.0005	<0.0005	<0.0005	0.009	0.027
		27-Feb-96	AEN	<0.05	0.37	<0.0005	<0.0005	<0.0005	<0.002	NA	NA	NA	NA	NA	NA	NA	NA
	(21)	30-Apr-96	AEN	NA	0.19	NA	NA	NA	NA	0.015	<0.0005	<0.0005	<0.0005	<0.0005	<0.0005	<0.0005	0.015
		05-Sep-96	AEN	NA	0.54	NA	NA	NA	NA	NA	NA	NA	NA	NA	NA	NA	NA
		17-Dec-96	A2AC	NA	<0.010	NA	NA	NA	NA	0.008	<0.001	<0.001	<0.001	<0.001	<0.001	0.004	0.012
		19-Feb-97	AEN	NA	0.49	NA	NA	NA	NA	NA	NA	NA	NA	NA	NA	NA	NA
MW-32R	(15)	22-Dec-95	AEN	NA	0.2	NA	NA	NA	NA	0.058	<0.0005	<0.0005	<0.0005	<0.0005	<0.0005	0.055	0.113
		27-Feb-96	AEN	<0.05	0.26	<0.0005	<0.0005	<0.0005	<0.002	NA	NA	NA	NA	NA	NA	NA	NA
	(22)	01-May-96	AEN	NA	0.17	NA	NA	NA	NA	0.074	<0.0005	<0.0005	<0.0005	<0.0005	<0.0005	<0.0005	0.074
		05-Sep-96	AEN	NA	0.34	NA	NA	NA	NA	NA	NA	NA	NA	NA	NA	NA	NA
	(31)	17-Dec-96	A2AC	NA	<0.010	NA	NA	NA	NA	0.110	<0.001	<0.001	<0.001	<0.001	<0.001	0.100	0.21
		19-Feb-97	AEN	NA	0.35	NA	NA	NA	NA	NA	NA	NA	NA	NA	NA	NA	NA
MW-34R	(23)	27-Dec-95	AEN	NA	0.3	NA	NA	NA	NA	0.009	<0.0005	<0.0005	<0.0005	<0.0005	<0.0005	<0.0005	0.009
		29-Apr-96	AEN	NA	NA	NA	NA	NA	NA	0.035	0.0011	<0.0005	<0.0005	<0.0005	<0.0005	<0.0005	0.0361
		17-Dec-96	AEN	NA	NA	NA	NA	NA	NA	0.018	<0.001	<0.001	0.002	<0.001	<0.001	0.005	0.025
	(40)	15-May-97	AEN	NA	NA	NA	NA	NA	NA	0.0028	<0.0005	<0.0005	<0.0005	<0.0005	<0.0005	0.0008	0.0036
	(46)	12-Dec-97	AEN	NA	NA	NA	NA	NA	NA	0.0012	<0.0005	<0.0005	<0.0005	<0.0005	<0.0005	<0.0005	0.0012
	(49)	10-Mar-98	AEN	NA	NA	NA	NA	NA	NA	0.020	<0.0005	<0.0005	0.0021	<0.0005	<0.0005	0.0015	0.249
		16-Sep-98	ENT	NA	NA	NA	NA	NA	NA	0.0073	<0.0005	<0.0005	0.0010	<0.0005	<0.0005	0.0022	0.0022
	(54)	03-Mar-99	CT	NA	NA	NA	NA	NA	NA	0.011	<0.0005	<0.0005	0.0022	<0.0005	<0.0005	0.002	0.0152
	(57)	21-Sep-99	CT	NA	NA	NA	NA	NA	NA	0.018	0.0006	0.0013	0.0038	0.0007	<0.0005	0.0032	0.0288
	duplicate	(57)	21-Sep-99	CT	NA	NA	NA	NA	NA	0.017	0.0006	0.0013	0.0035	0.0007	<0.0005	0.0032	0.0275
		09-May-00	CT	NA	NA	NA	NA	NA	NA	0.018	<0.0005	<0.0005	0.0033	0.0006	<0.0005	0.0027	0.0246
	(71)	12-Sep-00	CT	NA	NA	NA	NA	NA	NA	0.036	0.0007	<0.0005	0.004	0.0008	<0.0005	0.0038	0.046
		08-May-01	CT	NA	NA	NA	NA	NA	NA	0.018	<0.0005	<0.0005	0.0041	0.0006	<0.0005	0.0029	0.0256
	duplicate		06-Dec-01	CT	NA	NA	NA	NA	NA	0.010	<0.0005	<0.0005	0.0029	<0.0005	<0.0005	0.0022	0.0151
	06-Dec-01	CT	NA	NA	NA	NA	NA	NA	0.010	<0.0005	<0.0005	0.0028	<0.0005	<0.0005	0.0022	0.015	
LF-13		09-May-95	AEN	NA	NA	NA	NA	NA	NA	0.006	<0.0005	<0.0005	<0.0005	<0.0005	<0.0005	<0.0005	0.006
		28-Dec-95	AEN	NA	NA	NA	NA	NA	NA	0.006	<0.0005	<0.0005	<0.0005	<0.0005	<0.0005	<0.0005	0.006
		30-Apr-96	AEN	NA	NA	NA	NA	NA	NA	0.0031	<0.0005	<0.0005	<0.0005	<0.0005	<0.0005	<0.0005	0.0031
	duplicate		30-Apr-96	AEN	NA	NA	NA	NA	NA	0.0031	<0.0005	<0.0005	<0.0005	<0.0005	<0.0005	<0.0005	0.0031
	(38)	17-Dec-96	A2AC	NA	NA	NA	NA	NA	NA	0.003	<0.001	<0.001	<0.001	<0.001	<0.001	<0.001	0.003
LF-22		12-Jul-91	ANA	NA	NA	NA	NA	NA	NA	0.0007	0.012	0.0017	0.053	0.0063	0.0016	<0.0005	0.0753
		07-Jan-92	ANA	NA	NA	NA	NA	NA	NA	<0.0005	0.009	0.0037	0.041	0.0054	0.0011	<0.0005	0.0602
		16-Apr-92	ANA	NA	NA	NA	NA	NA	NA	<0.0005	0.0026	0.0018	0.015	0.0021	<0.0005	<0.0005	0.0215
	(1)	23-Jul-92	ANA	NA	NA	NA	NA	NA	NA	<0.0005	0.0034	0.0014	0.027	0.0052	<0.0005	<0.0005	0.037
		20-Oct-92	ANA	NA	NA	NA	NA	NA	NA	0.0008	0.0013	0.0007	0.014	0.004	<0.0005	<0.0005	0.02074
		25-May-93	ANA	NA	NA	NA	NA	NA	NA	<0.0005	0.0008	0.0006	0.0061	0.0024	<0.0005	<0.0005	0.00992
		13-Jul-93	ANA	NA	NA	NA	NA	NA	NA	0.0007	0.001	0.0009	0.0077	0.0033	<0.0005	<0.0005	0.01352
	(4)	13-Sep-94	AEN	NA	NA	NA	NA	NA	NA	0.004	<0.0005	0.008	0.003	0.001	0.0007	<0.0005	0.0167
		01-Dec-94	AEN	NA	NA	NA	NA	NA	NA	<0.0005	<0.0005	<0.0005	0.0006	0.0009	<0.0005	<0.0005	0.0015
		17-Feb-95	AEN	NA	NA	NA	NA	NA	NA	<0.0005	<0.0005	0.0006	0.0007	0.001	<0.0005	<0.0005	0.0023
		09-May-95	AEN	NA	NA	NA	NA	NA	NA	<0.0005	<0.0005	<0.0005	0.0007	0.0007	<0.0005	<0.0005	0.0014

Table 4  
 Summary of Groundwater Quality Data  
 East Baybridge Center  
 Emeryville and Oakland, California  
 (concentrations expressed in parts per million [ppm])

Well ID	Notes	Date Sampled	Lab	TPHg	TPHd	Benzene	Toluene	Ethyl- benzene	Total Xylenes	TCE	1,1,1-TCA	PCE	1,1-DCE	1,1-DCA	1,2-DCA	cis/trans-1,2- DCE	Total VOCs
duplicate		09-May-95	AEN	NA	NA	NA	NA	NA	NA	<0.0005	<0.0005	<0.0005	0.0005	0.0006	<0.0005	<0.0005	0.0011
	(11)	31-Aug-95	AEN	NA	NA	NA	NA	NA	NA	<0.0005	<0.0005	<0.0005	0.001	0.001	<0.0005	<0.0005	0.002
duplicate	(11)	31-Aug-95	AEN	NA	NA	NA	NA	NA	NA	<0.0005	<0.0005	<0.0005	0.001	0.001	<0.0005	<0.0005	0.002
		20-Dec-95	AEN	NA	NA	NA	NA	NA	NA	<0.0005	<0.0005	<0.0005	<0.0005	<0.0005	<0.0005	<0.0005	ND
	(17)	27-Feb-96	AEN	NA	NA	NA	NA	NA	NA	<0.0005	<0.0005	<0.0005	<0.0005	<0.0005	<0.0005	<0.0005	ND
	(24)	29-Apr-96	AEN	NA	NA	NA	NA	NA	NA	<0.0005	<0.0005	<0.0005	<0.0005	<0.0005	<0.0005	<0.0005	ND
		04-Sep-96	AEN	NA	NA	NA	NA	NA	NA	<0.0005	<0.0005	<0.0005	<0.0005	<0.0005	<0.0005	<0.0005	ND
		17-Dec-96	A2AC	NA	NA	NA	NA	NA	NA	<0.001	<0.001	<0.001	<0.001	<0.001	<0.001	<0.001	ND
		18-Feb-97	AEN	NA	NA	NA	NA	NA	NA	<0.0005	<0.0005	<0.0005	<0.0005	<0.0005	<0.0005	<0.0005	ND
		16-May-97	AEN	NA	NA	NA	NA	NA	NA	<0.0005	<0.0005	<0.0005	<0.0005	<0.0005	<0.0005	<0.0005	ND
		22-Aug-97	AEN	NA	NA	NA	NA	NA	NA	<0.0005	<0.0005	<0.0005	<0.0005	<0.0005	<0.0005	<0.0005	ND
		12-Dec-97	AEN	NA	NA	NA	NA	NA	NA	<0.0005	<0.0005	<0.0005	<0.0005	<0.0005	<0.0005	<0.0005	ND
		09-Mar-98	AEN	NA	NA	NA	NA	NA	NA	<0.0005	<0.0005	<0.0005	<0.0005	<0.0005	<0.0005	<0.0005	ND
		16-Sep-98	ENT	NA	NA	NA	NA	NA	NA	<0.0005	<0.0005	<0.0005	<0.0005	<0.0005	<0.0005	<0.0005	ND
		03-Mar-99	CT	NA	NA	NA	NA	NA	NA	<0.0005	<0.0005	<0.0005	<0.0005	<0.0005	<0.0005	<0.0005	ND
		22-Sep-99	CT	NA	NA	NA	NA	NA	NA	0.0008	<0.0005	<0.0005	<0.0005	<0.0005	<0.0005	<0.0005	0.0008
		09-May-00	CT	NA	NA	NA	NA	NA	NA	<0.0005	<0.0005	<0.0005	<0.0005	<0.0005	<0.0005	<0.0005	ND
		12-Sep-00	CT	NA	NA	NA	NA	NA	NA	<0.0005	<0.0005	<0.0005	<0.0005	<0.0005	<0.0005	<0.0005	ND
		08-Feb-01	CT	NA	<.05	NA	NA	NA	NA	<0.0005	<0.0005	<0.0005	<0.0005	<0.0005	<0.0005	<0.0005	ND
		09-May-01	CT	NA	NA	NA	NA	NA	NA	<0.0005	<0.0005	<0.0005	<0.0005	<0.0005	<0.0005	<0.0005	ND
		15-Aug-01	CT	NA	0.065	NA	NA	NA	NA	<0.0005	<0.0005	<0.0005	<0.0005	<0.0005	<0.0005	<0.0005	ND
		07-Dec-01	CT	NA	0.065	NA	NA	NA	NA	<0.0005	<0.0005	<0.0005	<0.0005	<0.0005	<0.0005	<0.0005	ND
LF-23		12-Jul-91	ANA	NA	NA	NA	NA	NA	NA	0.0039	0.0009	0.027	0.0012	0.011	0.0009	<0.0005	0.0449
		07-Jan-92	ANA	NA	NA	NA	NA	NA	NA	0.007	0.0023	0.056	0.0034	0.012	0.0013	<0.0005	0.082
		16-Apr-92	ANA	NA	NA	NA	NA	NA	NA	0.0036	0.0007	0.020	0.0044	0.0044	0.0011	<0.0005	0.03418
		23-Jul-92	ANA	NA	NA	NA	NA	NA	NA	0.0038	0.0013	0.029	0.0061	0.0044	0.0014	<0.0005	0.046
		20-Oct-92	ANA	NA	NA	NA	NA	NA	NA	0.0033	0.0005	0.023	0.0047	0.002	0.0015	<0.0005	0.03504
		25-May-93	ANA	NA	NA	NA	NA	NA	NA	0.0042	0.0007	0.016	0.0035	0.0017	0.0019	<0.0005	0.02795
		13-Jul-93	ANA	NA	NA	NA	NA	NA	NA	0.0081	0.0015	0.018	0.0074	0.0033	0.0051	<0.0005	0.0434
		13-Sep-94	AEN	NA	NA	NA	NA	NA	NA	<0.0005	<0.0005	0.0006	0.002	0.003	0.0007	<0.0005	0.0063
	(7)	01-Dec-94	AEN	NA	NA	NA	NA	NA	NA	0.004	<0.0005	0.008	0.0006	<0.0005	<0.0005	0.002	0.0146
	(8)	17-Feb-95	AEN	NA	NA	NA	NA	NA	NA	0.003	<0.0005	0.006	<0.0005	<0.0005	<0.0005	0.002	0.011
	(9)	09-May-95	AEN	NA	NA	NA	NA	NA	NA	0.002	<0.0005	0.005	<0.0005	<0.0005	<0.0005	0.001	0.008
	(10)	31-Aug-95	AEN	NA	NA	NA	NA	NA	NA	0.002	<0.0005	0.007	0.0007	0.0007	<0.0005	0.001	0.0114
	(14)	20-Dec-95	AEN	NA	NA	NA	NA	NA	NA	0.001	<0.0005	0.006	<0.0005	<0.0005	<0.0005	<0.0005	0.007
	(18)	27-Feb-96	AEN	NA	NA	NA	NA	NA	NA	0.0008	<0.0005	0.0038	<0.0005	<0.0005	<0.0005	<0.0005	0.0046
	(25)	29-Apr-96	AEN	NA	NA	NA	NA	NA	NA	0.0006	<0.0005	0.0028	<0.0005	<0.0005	<0.0005	<0.0005	0.0034
	(26)	04-Sep-96	AEN	NA	NA	NA	NA	NA	NA	0.0014	<0.0005	0.0032	<0.0005	<0.0005	<0.0005	<0.0005	0.0046
	(35)	17-Dec-96	A2AC	NA	NA	NA	NA	NA	NA	0.001	<0.001	0.003	<0.001	<0.001	<0.001	<0.001	0.004
	(39)	18-Feb-97	AEN	NA	NA	NA	NA	NA	NA	0.0007	<0.0005	0.0017	<0.0005	<0.0005	<0.0005	<0.0005	0.0024
	(41)	16-May-97	AEN	NA	NA	NA	NA	NA	NA	0.0014	<0.0005	0.0021	<0.0005	<0.0005	<0.0005	0.0012	0.0047
	(43)	22-Aug-97	AEN	NA	NA	NA	NA	NA	NA	0.0013	<0.0005	0.0025	<0.0005	<0.0005	<0.0005	0.0009	0.0047
	(45)	11-Dec-97	AEN	NA	NA	NA	NA	NA	NA	0.0010	<0.0005	0.0019	<0.0005	<0.0005	<0.0005	0.0009	0.0038
	(48)	09-Mar-98	AEN	NA	NA	NA	NA	NA	NA	0.0010	<0.0005	0.0024	<0.0005	<0.0005	<0.0005	0.0005	0.0045
		16-Sep-98	ENT	NA	NA	NA	NA	NA	NA	<0.0005	<0.0005	0.0007	<0.0005	<0.0005	<0.0005	<0.0005	0.0007
	(53)	03-Mar-99	CT	NA	NA	NA	NA	NA	NA	0.0007	<0.0005	0.001	<0.0005	<0.0005	<0.0005	0.0006	0.0034

**Table 4**  
**Summary of Groundwater Quality Data**  
**East Baybridge Center**  
**Emeryville and Oakland, California**  
*(concentrations expressed in parts per million [ppm])*

Well ID	Notes	Date Sampled	Lab	TPHg	TPHd	Benzene	Toluene	Ethyl-benzene	Total Xylenes	TCE	1,1,1-TCA	PCE	1,1-DCE	1,1-DCA	1,2-DCA	cis/trans-1,2-DCE	Total VOCs
	(59)	22-Sep-99	CT	NA	NA	NA	NA	NA	NA	0.0008	<0.0005	0.0016	<0.0005	<0.0005	<0.0005	<0.0005	0.0047
		09-May-00	CT	NA	NA	NA	NA	NA	NA	0.0006	<0.0005	0.0007	<0.0005	<0.0005	<0.0005	<0.0005	0.0013
		12-Sep-00	CT	NA	NA	NA	NA	NA	NA	0.0008	<0.0005	0.0014	<0.0005	0.001	0.0007	<0.0005	0.0036
		08-Feb-01	CT	NA	0.059	NA	NA	NA	NA	0.0005	<0.0005	0.0009	<0.0005	<0.0005	<0.0005	<0.0005	0.0014
duplicate		08-Feb-01	CT	NA	0.073	NA	NA	NA	NA	0.0006	<0.0005	0.0008	<0.0005	<0.0005	<0.0005	<0.0005	0.0014
		09-May-01	CT	NA	NA	NA	NA	NA	NA	0.0005	<0.0005	0.0006	<0.0005	<0.0005	<0.0005	<0.0005	0.0011
duplicate		09-May-01	CT	NA	NA	NA	NA	NA	NA	0.0005	<0.0005	0.0006	<0.0005	<0.0005	<0.0005	<0.0005	0.0011
	(75)	15-Aug-01	CT	NA	0.069	NA	NA	NA	NA	0.0007	<0.0005	0.001	0.0018	<0.0005	<0.0005	<0.0005	0.0068
duplicate	(76)	15-Aug-01	CT	NA	NA	NA	NA	NA	NA	0.0007	<0.0005	0.0012	0.0017	<0.0005	<0.0005	<0.0005	0.0073
	(82)	07-Dec-01	CT	NA	NA	NA	NA	NA	NA	<0.0005	<0.0005	0.0012	0.0013	<0.0005	<0.0005	<0.0005	0.0067
<b>Shallow Extraction Wells (20 to 30 feet below grade)</b>																	
EX-3		14-Sep-94	AEN	NA	NA	NA	NA	NA	NA	0.004	0.014	0.042	0.100	0.005	0.001	0.008	0.174
		02-Dec-94	AEN	NA	0.10	NA	NA	NA	NA	0.004	0.015	0.045	0.140	0.005	<0.0005	<0.0005	0.209
		17-Feb-95	AEN	NA	<0.05	NA	NA	NA	NA	0.003	0.014	0.037	0.096	0.005	<0.0005	<0.0005	0.155
		09-May-95	AEN	NA	0.10	NA	NA	NA	NA	0.003	0.012	0.031	0.120	0.005	<0.0005	<0.0005	0.171
		31-Aug-95	AEN	NA	0.10	NA	NA	NA	NA	<0.003	0.012	0.027	0.120	0.005	<0.003	<0.003	0.164
		28-Dec-95	AEN	NA	0.10	NA	NA	NA	NA	<0.003	0.009	0.036	0.160	0.004	<0.003	<0.003	0.209
		27-Feb-96	AEN	NA	0.12	NA	NA	NA	NA	<0.003	0.0077	0.030	0.120	0.0032	<0.003	<0.003	0.1609
		30-Apr-96	AEN	NA	0.08	NA	NA	NA	NA	<0.003	0.008	0.026	0.120	0.003	<0.003	<0.003	0.157
		05-Sep-96	AEN	NA	0.14	NA	NA	NA	NA	<0.003	0.008	0.029	0.140	0.004	<0.003	<0.003	0.181
		17-Dec-96	A2AC	NA	<0.010	NA	NA	NA	NA	0.006	0.010	0.020	0.098	0.003	<0.001	0.004	0.141
		19-Feb-97	AEN	NA	<0.05	NA	NA	NA	NA	<0.003	0.006	<0.003	0.070	<0.003	<0.003	<0.003	0.076
		15-May-97	AEN	NA	0.12	NA	NA	NA	NA	<0.0005	0.007	0.0048	0.082	0.0025	<0.0005	<0.0005	0.0963
	(42)	21-Aug-97	AEN	NA	<0.05	NA	NA	NA	NA	<0.0005	0.0073	0.0053	0.075	0.0022	<0.0005	<0.0005	0.0898
		12-Dec-97	AEN	NA	0.06	NA	NA	NA	NA	<0.0005	0.0079	0.0050	0.083	0.0029	<0.0005	<0.0005	0.0988
		09-Mar-98	AEN	NA	0.05	NA	NA	NA	NA	<0.0005	0.0043	0.0035	0.062	0.0021	<0.0005	<0.0005	0.0719
		16-Sep-98	ENT	NA	<0.05	NA	NA	NA	NA	<0.0005	0.0037	0.0300	0.150	<0.0005	<0.0005	<0.0005	0.1837
		14-Jun-99	CT	NA	0.056	NA	NA	NA	NA	0.0021	0.0075	0.0270	0.160	0.0040	<0.0005	<0.0005	0.2006
		23-Sep-99	CT	NA	<0.05	NA	NA	NA	NA	0.0024	0.0062	0.0310	0.140	0.0039	<0.0005	<0.0005	0.1835
		10-May-00	CT	NA	<0.05	NA	NA	NA	NA	0.0022	0.0060	0.0260	0.160	0.0041	<0.0005	<0.0005	0.1983
		24-Oct-00	CT	NA	<0.05	NA	NA	NA	NA	0.0016	0.0047	0.0210	0.130	0.0035	0.0007	<0.0005	0.1615
EX-4		14-Sep-94	AEN	NA	NA	NA	NA	NA	NA	<0.0005	0.025	0.010	0.220	0.006	0.001	<0.0005	0.262
		02-Dec-94	AEN	NA	0.09	NA	NA	NA	NA	<0.0005	0.020	0.011	0.240	0.006	<0.0005	<0.0005	0.277
		17-Feb-95	AEN	NA	<0.05	NA	NA	NA	NA	<0.003	0.017	0.011	0.210	0.004	<0.003	<0.003	0.242
		09-May-95	AEN	NA	0.10	NA	NA	NA	NA	<0.003	0.020	0.011	0.210	0.004	<0.003	<0.003	0.245
		31-Aug-95	AEN	NA	0.20	NA	NA	NA	NA	<0.003	0.016	0.010	0.200	0.005	<0.003	<0.003	0.231
		28-Dec-95	AEN	NA	0.10	NA	NA	NA	NA	<0.003	0.014	0.014	0.210	0.004	<0.003	<0.003	0.242
		27-Feb-96	AEN	NA	0.13	NA	NA	NA	NA	<0.0005	0.0086	0.012	0.150	<0.0005	<0.0005	<0.0005	0.1706
		30-Apr-96	AEN	NA	0.06	NA	NA	NA	NA	<0.003	0.010	0.010	0.150	<0.003	<0.003	<0.003	0.17
		05-Sep-96	AEN	NA	0.14	NA	NA	NA	NA	<0.003	0.008	0.009	0.140	0.003	<0.003	<0.003	0.16
		17-Dec-96	A2AC	NA	0.334	NA	NA	NA	NA	0.001	0.009	0.010	0.090	0.003	<0.001	0.004	0.117
		19-Feb-97	AEN	NA	0.11	NA	NA	NA	NA	<0.003	0.005	0.005	0.097	<0.003	<0.003	<0.003	0.107
		15-May-97	AEN	NA	0.17	NA	NA	NA	NA	<0.003	0.006	0.008	0.110	0.003	<0.003	<0.003	0.127
		21-Aug-97	AEN	NA	0.13	NA	NA	NA	NA	<0.003	0.005	0.007	0.087	<0.003	<0.003	<0.003	0.099
		12-Dec-97	AEN	NA	<0.05	NA	NA	NA	NA	<0.003	0.007	0.014	0.097	0.003	<0.003	<0.003	0.121

Table 4  
 Summary of Groundwater Quality Data  
 East Baybridge Center  
 Emeryville and Oakland, California  
 (concentrations expressed in parts per million [ppm])

Well ID	Notes	Date Sampled	Lab	TPHg	TPHd	Benzene	Toluene	Ethyl- benzene	Total Xylenes	TCE	1,1,1-TCA	PCE	1,1-DCE	1,1-DCA	1,2-DCA	cis/trans-1,2- DCE	Total VOCs
		09-Mar-98	AEN	NA	0.13	NA	NA	NA	NA	<0.0005	0.0051	0.0098	0.072	0.0023	<0.0005	0.072	0.1612
	(156)	16-Sep-98	ENT	NA	<0.05	NA	NA	NA	NA	<0.0005	0.0025	0.0120	0.096	0.0009	<0.0005	<0.0005	0.1114
		03-Mar-99	CT	NA	<0.05	NA	NA	NA	NA	<0.0005	0.0038	0.0091	0.063	0.0021	<0.0005	<0.0005	0.079
		23-Sep-99	CT	NA	<0.05	NA	NA	NA	NA	<0.0005	0.0037	0.012	0.071	0.0023	<0.0005	<0.0005	0.0927
		10-May-00	CT	NA	<0.05	NA	NA	NA	NA	<0.0005	0.0041	0.012	0.096	0.0027	<0.0005	<0.0005	0.1148
		24-Oct-00	CT	NA	<0.05	NA	NA	NA	NA	<0.0005	0.0028	0.009	0.065	0.0020	0.0008	<0.0005	0.0794
EXTR		27-Feb-96	AEN	NA	0.15	NA	NA	NA	NA	<0.0005	0.0069	0.0013	0.066	0.0028	<0.0005	<0.0005	0.077
		30-Apr-96	AEN	NA	0.11	NA	NA	NA	NA	<0.0005	0.0055	0.0012	0.063	0.0024	<0.0005	<0.0005	0.0721
		05-Sep-96	AEN	NA	0.12	NA	NA	NA	NA	<0.0005	0.0082	0.0031	0.099	0.0031	<0.0005	<0.0005	0.1134
		17-Dec-96	A2AC	NA	1.520	NA	NA	NA	NA	0.001	0.008	0.009	0.074	0.002	<0.001	0.004	0.098
		19-Feb-97	AEN	NA	0.13	NA	NA	NA	NA	<0.0005	0.0034	0.0021	0.059	0.0016	<0.0005	<0.0005	0.0661
		15-May-97	AEN	NA	0.08	NA	NA	NA	NA	<0.0005	0.0041	0.0018	0.060	0.0021	<0.0005	0.0006	0.0686
		21-Aug-97	AEN	NA	0.07	NA	NA	NA	NA	<0.0005	0.007	0.0048	0.073	0.0023	<0.0005	<0.0005	0.0871
		12-Dec-97	AEN	NA	<0.05	NA	NA	NA	NA	0.0006	0.0063	0.0040	0.075	0.0031	<0.0005	0.0006	0.0896
		09-Mar-98	AEN	NA	0.07	NA	NA	NA	NA	<0.0005	0.0043	0.0040	0.064	0.0021	<0.0005	<0.0005	0.0744
		16-Sep-98	ENT	NA	<0.05	NA	NA	NA	NA	<0.0005	<0.0005	0.0150	0.150	<0.0005	<0.0005	<0.0005	0.165
	(62)	03-Mar-99	CT	NA	<0.05	NA	NA	NA	NA	<0.0005	0.0039	0.0035	0.068	0.0022	<0.0005	<0.0005	0.0776
		23-Sep-99	CT	NA	<0.05	NA	NA	NA	NA	<0.0005	0.0023	0.0010	0.047	0.0013	<0.0005	<0.0005	0.0522
		10-May-00	CT	NA	<0.05	NA	NA	NA	NA	<0.0005	0.0031	0.0010	0.068	0.0018	<0.0005	<0.0005	0.0739
		24-Oct-00	CT	NA	<0.05	NA	NA	NA	NA		0.0027	0.0013	0.066	0.0016	0.0013	<0.0005	0.0729
Deeper Wells (40 to 45 feet below grade)																	
MW-6D		13-Sep-94	AEN	NA	NA	NA	NA	NA	NA	<0.0005	<0.0005	<0.0005	0.003	<0.0005	0.0005	<0.0005	0.0035
		01-Dec-94	AEN	NA	NA	NA	NA	NA	NA	<0.0005	<0.0005	<0.0005	<0.0005	<0.0005	<0.0005	<0.0005	ND
		16-Feb-95	AEN	NA	NA	NA	NA	NA	NA	<0.0005	<0.0005	<0.0005	<0.0005	<0.0005	<0.0005	<0.0005	ND
		09-May-95	AEN	NA	NA	NA	NA	NA	NA	<0.0005	<0.0005	<0.0005	<0.0005	<0.0005	<0.0005	<0.0005	ND
		31-Aug-95	AEN	NA	NA	NA	NA	NA	NA	<0.0005	<0.0005	<0.0005	<0.0005	<0.0005	<0.0005	<0.0005	ND
		28-Dec-95	AEN	NA	NA	NA	NA	NA	NA	<0.0005	<0.0005	<0.0005	<0.0005	<0.0005	<0.0005	<0.0005	ND
		27-Feb-96	AEN	NA	NA	NA	NA	NA	NA	<0.0005	<0.0005	<0.0005	<0.0005	<0.0005	<0.0005	<0.0005	ND
		01-May-96	AEN	NA	NA	NA	NA	NA	NA	<0.0005	<0.0005	<0.0005	<0.0005	<0.0005	<0.0005	<0.0005	ND
		03-Sep-96	AEN	NA	NA	NA	NA	NA	NA	<0.0005	<0.0005	<0.0005	<0.0005	<0.0005	<0.0005	<0.0005	ND
		17-Dec-96	A2AC	NA	NA	NA	NA	NA	NA	<0.001	<0.001	<0.001	<0.001	<0.001	<0.001	<0.001	ND
		18-Feb-97	AEN	NA	NA	NA	NA	NA	NA	<0.0005	<0.0005	<0.0005	<0.0005	<0.0005	<0.0005	<0.0005	ND
		16-May-97	AEN	NA	NA	NA	NA	NA	NA	<0.0005	<0.0005	<0.0005	<0.0005	<0.0005	<0.0005	<0.0005	ND
		22-Aug-97	AEN	NA	NA	NA	NA	NA	NA	<0.0005	<0.0005	<0.0005	<0.0005	<0.0005	<0.0005	<0.0005	ND
		11-Dec-97	AEN	NA	NA	NA	NA	NA	NA	<0.0005	<0.0005	<0.0005	<0.0005	<0.0005	<0.0005	<0.0005	ND
		09-Mar-98	AEN	NA	NA	NA	NA	NA	NA	<0.0005	<0.0005	<0.0005	<0.0005	<0.0005	<0.0005	<0.0005	ND
		14-Sep-98	ENT	NA	NA	NA	NA	NA	NA	<0.0005	<0.0005	<0.0005	<0.0005	<0.0005	<0.0005	<0.0005	ND
		02-Mar-99	CT	NA	NA	NA	NA	NA	NA	<0.0005	<0.0005	<0.0005	<0.0005	<0.0005	<0.0005	<0.0005	ND
		23-Sep-99	CT	NA	NA	NA	NA	NA	NA	<0.0005	<0.0005	<0.0005	<0.0005	<0.0005	<0.0005	<0.0005	ND
		10-May-00	CT	NA	NA	NA	NA	NA	NA	<0.0005	<0.0005	<0.0005	<0.0005	<0.0005	<0.0005	<0.0005	ND
		11-Sep-00	CT	NA	NA	NA	NA	NA	NA	<0.0005	<0.0005	<0.0005	<0.0005	<0.0005	<0.0005	<0.0005	ND
		07-Dec-01	CT	NA	NA	NA	NA	NA	NA	<0.0005	<0.0005	<0.0005	<0.0005	<0.0005	<0.0005	<0.0005	ND
MW-7D		13-Sep-94	AEN	NA	NA	NA	NA	NA	NA	<0.0005	<0.0005	<0.0005	0.003	<0.0005	<0.0005	<0.0005	0.003
		30-Nov-94	AEN	NA	NA	NA	NA	NA	NA	<0.0005	<0.0005	<0.0005	0.003	<0.0005	<0.0005	<0.0005	0.003

**Table 4**  
**Summary of Groundwater Quality Data**  
**East Baybridge Center**  
**Emeryville and Oakland, California**  
*(concentrations expressed in parts per million [ppm])*

Well ID	Notes	Date Sampled	Lab	TPHg	TPHd	Benzene	Toluene	Ethyl- benzene	Total Xylenes	TCE	1,1,1-TCA	PCE	1,1-DCE	1,1-DCA	1,2-DCA	cis/trans-1,2- DCE	Total VOCs		
		16-Feb-95	AEN	NA	NA	NA	NA	NA	NA	<0.0005	<0.0005	<0.0005	0.003	<0.0005	<0.0005	<0.0005	0.003		
		09-May-95	AEN	NA	NA	NA	NA	NA	NA	<0.0005	<0.0005	<0.0005	<0.0005	<0.0005	<0.0005	<0.0005	ND		
		30-Aug-95	AEN	NA	NA	NA	NA	NA	NA	<0.0005	<0.0005	<0.0005	0.002	<0.0005	<0.0005	<0.0005	0.002		
duplicate		20-Dec-95	AEN	NA	NA	NA	NA	NA	NA	<0.0005	<0.0005	<0.0005	<0.0005	<0.0005	<0.0005	<0.0005	ND		
		20-Dec-95	AEN	NA	NA	NA	NA	NA	NA	<0.0005	<0.0005	<0.0005	<0.0005	<0.0005	<0.0005	<0.0005	ND		
		27-Feb-96	AEN	NA	NA	NA	NA	NA	NA	<0.0005	<0.0005	<0.0005	<0.0005	<0.0005	<0.0005	<0.0005	ND		
		30-Apr-96	AEN	NA	NA	NA	NA	NA	NA	<0.0005	<0.0005	<0.0005	<0.0005	<0.0005	<0.0005	<0.0005	ND		
		03-Sep-96	AEN	NA	NA	NA	NA	NA	NA	<0.0005	<0.0005	<0.0005	0.0010	<0.0005	<0.0005	<0.0005	0.001		
		17-Dec-96	A2AC	NA	NA	NA	NA	NA	NA	<0.001	<0.001	<0.001	0.008	<0.001	<0.001	<0.001	0.008		
		19-Feb-97	AEN	NA	NA	NA	NA	NA	NA	<0.0025	0.0009	<0.0005	0.0081	<0.0005	<0.0005	<0.0005	0.009		
		16-May-97	AEN	NA	NA	NA	NA	NA	NA	<0.0025	<0.0005	<0.0005	0.0023	<0.0005	<0.0005	<0.0005	0.0023		
		22-Aug-97	AEN	NA	NA	NA	NA	NA	NA	<0.0025	<0.0005	<0.0005	0.0083	<0.0005	<0.0005	<0.0005	0.0083		
		11-Dec-97	AEN	NA	NA	NA	NA	NA	NA	<0.0005	<0.0005	<0.0005	0.0081	<0.0005	<0.0005	<0.0005	0.0081		
	(50)		09-Mar-98	AEN	NA	NA	NA	NA	NA	NA	<0.0005	<0.0005	<0.0005	0.0081	<0.0005	<0.0005	<0.0005	0.0081	
			15-Sep-98	ENT	NA	NA	NA	NA	NA	NA	<0.0005	<0.0009	0.0008	0.0160	0.0013	<0.0005	<0.0005	0.0181	
		duplicate		02-Mar-99	CT	NA	NA	NA	NA	NA	NA	<0.0005	<0.0005	<0.0005	0.0098	0.0006	<0.0005	<0.0005	0.0104
				02-Mar-99	CT	NA	NA	NA	NA	NA	NA	<0.0005	<0.0005	<0.0005	0.0084	0.0005	<0.0005	<0.0005	0.0089
			22-Sep-99	CT	NA	NA	NA	NA	NA	NA	<0.0005	<0.0005	<0.0005	0.014	0.0008	<0.0005	<0.0005	0.0148	
			09-May-00	CT	NA	NA	NA	NA	NA	NA	<0.0005	<0.0005	<0.0005	0.015	0.0007	<0.0005	<0.0005	0.0157	
		11-Sep-00	CT	NA	NA	NA	NA	NA	NA	<0.0005	<0.0005	<0.0005	0.015	0.0008	0.0009	<0.0005	0.0167		
		07-Dec-01	CT	NA	NA	NA	NA	NA	NA	<0.0005	<0.0005	<0.0005	0.016	0.0009	<0.0005	<0.0005	0.0169		
MW-9D			12-Sep-94	AEN	NA	NA	NA	NA	NA	NA	<0.0005	<0.0005	<0.0005	<0.0005	<0.0005	<0.0005	<0.0005	ND	
			30-Nov-94	AEN	NA	NA	NA	NA	NA	NA	<0.0005	<0.0005	<0.0005	<0.0005	<0.0005	<0.0005	<0.0005	ND	
		16-Feb-95	AEN	NA	NA	NA	NA	NA	NA	<0.0005	<0.0005	<0.0005	<0.0005	<0.0005	<0.0005	<0.0005	ND		
		08-May-95	AEN	NA	NA	NA	NA	NA	NA	<0.0005	<0.0005	<0.0005	<0.0005	<0.0005	<0.0005	<0.0005	ND		
		31-Aug-95	AEN	NA	NA	NA	NA	NA	NA	<0.0005	<0.0005	<0.0005	<0.0005	<0.0005	<0.0005	<0.0005	ND		
		20-Dec-95	AEN	NA	NA	NA	NA	NA	NA	<0.0005	<0.0005	<0.0005	<0.0005	<0.0005	<0.0005	<0.0005	ND		
		26-Feb-96	AEN	NA	NA	NA	NA	NA	NA	<0.0005	<0.0005	<0.0005	<0.0005	<0.0005	<0.0005	<0.0005	ND		
		01-May-96	AEN	NA	NA	NA	NA	NA	NA	<0.0005	<0.0005	<0.0005	<0.0005	<0.0005	<0.0005	<0.0005	ND		
		03-Sep-96	AEN	NA	NA	NA	NA	NA	NA	<0.0005	<0.0005	<0.0005	<0.0005	<0.0005	<0.0005	<0.0005	ND		
		17-Dec-96	A2AC	NA	NA	NA	NA	NA	NA	<0.001	<0.001	<0.001	0.001	<0.001	<0.001	<0.001	0.001		
		19-Feb-97	AEN	NA	NA	NA	NA	NA	NA	<0.0005	<0.0005	<0.0005	<0.0005	<0.0005	<0.0005	<0.0005	ND		
		16-May-97	AEN	NA	NA	NA	NA	NA	NA	<0.0005	<0.0005	<0.0005	<0.0005	<0.0005	<0.0005	<0.0005	ND		
		22-Aug-97	AEN	NA	NA	NA	NA	NA	NA	<0.0005	<0.0005	<0.0005	<0.0005	<0.0005	<0.0005	<0.0005	ND		
	DUP		11-Dec-97	AEN	NA	NA	NA	NA	NA	NA	<0.0005	<0.0005	<0.0005	0.0024	<0.0005	<0.0005	<0.0005	0.0024	
			11-Dec-97	AEN	NA	NA	NA	NA	NA	NA	<0.0005	<0.0005	<0.0005	0.0025	<0.0005	<0.0005	<0.0005	0.0025	
			10-Mar-98	AEN	NA	NA	NA	NA	NA	NA	<0.0005	<0.0005	<0.0005	<0.0005	<0.0005	<0.0005	<0.0005	ND	
			14-Sep-98	ENT	NA	NA	NA	NA	NA	NA	<0.0005	<0.0005	<0.0005	<0.0005	<0.0005	<0.0005	<0.0005	ND	
			02-Mar-99	CT	NA	NA	NA	NA	NA	NA	<0.0005	<0.0005	<0.0005	0.0007	<0.0005	<0.0005	<0.0005	0.0007	
			22-Sep-99	CT	NA	NA	NA	NA	NA	NA	<0.0005	<0.0005	<0.0005	0.0037	<0.0005	<0.0005	<0.0005	0.0037	
			07-Dec-01	CT	NA	NA	NA	NA	NA	NA	<0.0005	0.0006	<0.0005	0.0020	0.0009	<0.0005	<0.0005	0.0035	
	Deep Well (65 feet below grade)																		
	MW-7Z		13-Sep-94	AEN	NA	NA	NA	NA	NA	NA	<0.0005	<0.0005	<0.0005	<0.0005	<0.0005	<0.0005	<0.0005	ND	
			30-Nov-94	AEN	NA	NA	NA	NA	NA	NA	<0.0005	<0.0005	<0.0005	<0.0005	<0.0005	<0.0005	<0.0005	ND	
		16-Feb-95	AEN	NA	NA	NA	NA	NA	NA	<0.0005	<0.0005	<0.0005	<0.0005	<0.0005	<0.0005	<0.0005	ND		



Table 4  
 Summary of Groundwater Quality Data  
 East Baybridge Center  
 Emeryville and Oakland, California  
 (concentrations expressed in parts per million [ppm])

Well ID	Notes	Date Sampled	Lab	TPHg	TPHd	Benzene	Toluene	Ethyl- benzene	Total Xylenes	TCE	1,1,1-TCA	PCE	1,1-DCE	1,1-DCA	1,2-DCA	cis/trans-1,2- DCE	Total VOCs
		30-Aug-95	AEN	NA	NA	NA	NA	NA	NA	<0.0005	<0.0005	<0.0005	<0.0005	<0.0005	<0.0005	<0.0005	ND
		28-Dec-95	AEN	NA	NA	NA	NA	NA	NA	<0.0005	<0.0005	<0.0005	<0.0005	<0.0005	<0.0005	<0.0005	ND
		27-Feb-96	AEN	NA	NA	NA	NA	NA	NA	<0.0005	<0.0005	<0.0005	<0.0005	<0.0005	<0.0005	<0.0005	ND
		30-Apr-96	AEN	NA	NA	NA	NA	NA	NA	NA	<0.0005	<0.0005	<0.0005	<0.0005	<0.0005	<0.0005	ND
		03-Sep-96	AEN	NA	NA	NA	NA	NA	NA	<0.0005	<0.0005	<0.0005	<0.0005	<0.0005	<0.0005	<0.0005	ND
	(36)	17-Dec-96	A2AC	NA	NA	NA	NA	NA	NA	0.001	<0.001	<0.001	<0.001	<0.001	<0.001	0.004	0.005
		19-Feb-97	AEN	NA	NA	NA	NA	NA	NA	<0.0005	<0.0005	<0.0005	<0.0005	<0.0005	<0.0005	<0.0005	ND
		16-May-97	AEN	NA	NA	NA	NA	NA	NA	<0.0005	<0.0005	<0.0005	<0.0005	<0.0005	<0.0005	<0.0005	ND
		22-Aug-97	AEN	NA	NA	NA	NA	NA	NA	<0.0005	<0.0005	<0.0005	<0.0005	<0.0005	<0.0005	<0.0005	ND
		11-Dec-97	AEN	NA	NA	NA	NA	NA	NA	<0.0005	<0.0005	<0.0005	<0.0005	<0.0005	<0.0005	<0.0005	ND
	Duplicate	09-Mar-98	AEN	NA	NA	NA	NA	NA	NA	<0.0005	<0.0005	0.0092	<0.0005	<0.0005	<0.0005	<0.0005	0.0092
		09-Mar-98	AEN	NA	NA	NA	NA	NA	NA	<0.0005	<0.0005	0.0092	<0.0005	<0.0005	<0.0005	<0.0005	0.0092
		15-Sep-98	ENT	NA	NA	NA	NA	NA	NA	<0.0005	<0.0005	<0.0005	<0.0005	<0.0005	<0.0005	<0.0005	ND
		02-Mar-99	CT	NA	NA	NA	NA	NA	NA	<0.0005	<0.0005	<0.0005	<0.0005	<0.0005	<0.0005	<0.0005	ND
		22-Sep-99	CT	NA	NA	NA	NA	NA	NA	<0.0005	<0.0005	<0.0005	<0.0005	<0.0005	<0.0005	<0.0005	ND
		10-May-00	CT	NA	NA	NA	NA	NA	NA	<0.0005	<0.0005	<0.0005	<0.0005	<0.0005	<0.0005	<0.0005	ND
		11-Sep-00	CT	NA	NA	NA	NA	NA	NA	<0.0005	<0.0005	<0.0005	<0.0005	<0.0005	<0.0005	<0.0005	ND
		07-Dec-01	CT	NA	NA	NA	NA	NA	NA	<0.0005	<0.0005	<0.0005	<0.0005	<0.0005	<0.0005	<0.0005	ND
<b>REGULATORY CONCENTRATIONS</b>																	
	MCL			NE	NE	0.005	1.000	0.700	10.00	0.005	0.200	0.005	0.0005	0.005	0.005	0.006/0.010	
	RWQCB RBSL groundwater is NOT a source of drinking water			0.500	0.640	0.046	0.130	0.290	0.013	0.360	0.062	0.120	0.025	0.047	0.910	0.590/0.590	
	RWQCB RBSL groundwater is a source of drinking water			0.100	0.100	1.000	0.040	0.030	0.013	0.005	0.062	0.005	0.0032	0.005	0.005	0.006/0.010	
<b>Trip Blanks</b>																	
		17-Feb-95	AEN	NA	NA	NA	NA	NA	NA	<0.0005	<0.0005	<0.0005	<0.0005	<0.0005	<0.0005	<0.0005	ND
		10-May-95	AEN	NA	NA	<0.0005	<0.0005	<0.0005	<0.002	<0.0005	<0.0005	<0.0005	<0.0005	<0.0005	<0.0005	<0.0005	ND
		31-Aug-95	AEN	NA	NA	<0.0005	<0.0005	<0.0005	<0.002	<0.0005	<0.0005	<0.0005	<0.0005	<0.0005	<0.0005	<0.0005	ND
		28-Dec-95	AEN	NA	NA	NA	NA	NA	NA	<0.0005	<0.0005	<0.0005	<0.0005	<0.0005	<0.0005	<0.0005	ND
		27-Feb-96	AEN	<0.05	NA	<0.0005	<0.0005	<0.0005	<0.002	<0.0005	<0.0005	<0.0005	<0.0005	<0.0005	<0.0005	<0.0005	ND
		03-Sep-96	AEN	NA	NA	NA	NA	NA	NA	<0.0005	<0.0005	<0.0005	<0.0005	<0.0005	<0.0005	<0.0005	ND
		19-Feb-97	AEN	NA	NA	NA	NA	NA	NA	<0.0005	<0.0005	<0.0005	<0.0005	<0.0005	<0.0005	<0.0005	ND
		15-May-97	AEN	NA	NA	NA	NA	NA	NA	<0.0005	<0.0005	<0.0005	<0.0005	<0.0005	<0.0005	<0.0005	ND
		22-Aug-97	AEN	NA	NA	NA	NA	NA	NA	<0.0005	<0.0005	<0.0005	<0.0005	<0.0005	<0.0005	<0.0005	ND
		11-Dec-97	AEN	NA	NA	NA	NA	NA	NA	<0.0005	<0.0005	<0.0005	<0.0005	<0.0005	<0.0005	<0.0005	ND
		09-Mar-98	AEN	NA	NA	NA	NA	NA	NA	<0.0005	<0.0005	<0.0005	<0.0005	<0.0005	<0.0005	<0.0005	ND
		23-Sep-99	CT	NA	NA	NA	NA	NA	NA	<0.0005	<0.0005	<0.0005	<0.0005	<0.0005	<0.0005	<0.0005	ND
<b>Field Blanks</b>																	
LF-22		17-Feb-95	AEN	NA	NA	NA	NA	NA	NA	<0.0005	<0.0005	<0.0005	<0.0005	<0.0005	<0.0005	<0.0005	ND
LF-22		09-May-95	AEN	NA	NA	NA	NA	NA	NA	<0.0005	<0.0005	<0.0005	<0.0005	<0.0005	<0.0005	<0.0005	ND
MW-7Z		09-May-95	AEN	NA	NA	NA	NA	NA	NA	<0.0005	<0.0005	<0.0005	<0.0005	<0.0005	<0.0005	<0.0005	ND
LF-22-FB		31-Aug-95	AEN	NA	NA	NA	NA	NA	NA	<0.0005	<0.0005	<0.0005	<0.0005	<0.0005	<0.0005	<0.0005	ND

**Table 4**  
**Summary of Groundwater Quality Data**  
**East Baybridge Center**  
**Emeryville and Oakland, California**  
*(concentrations expressed in parts per million [ppm])*

Well ID	Notes	Date Sampled	Lab	TPHg	TPHd	Benzene	Toluene	Ethyl-benzene	Total Xylenes	TCE	1,1,1-TCA	PCE	1,1-DCE	1,1-DCA	1,2-DCA	cis/trans-1,2-DCE	Total VOCs
MW-7D-FB		20-Dec-95	AEN	NA	NA	NA	NA	NA	NA	<0.0005	<0.0005	<0.0005	<0.0005	<0.0005	<0.0005	<0.0005	ND
MW-7-FB		26-Feb-96	AEN	NA	NA	NA	NA	NA	NA	<0.0005	<0.0005	<0.0005	<0.0005	<0.0005	<0.0005	<0.0005	ND
MW-9-FB		03-Sep-96	AEN	NA	NA	NA	NA	NA	NA	<0.0005	<0.0005	<0.0005	<0.0005	<0.0005	<0.0005	<0.0005	ND
LF-22-FB	(37)	17-Dec-96	A2AC	NA	NA	NA	NA	NA	NA	<0.001	<0.001	<0.001	<0.001	<0.001	<0.001	<0.001	ND
MW-8-FB		19-Feb-97	AEN	NA	NA	NA	NA	NA	NA	<0.0005	<0.0005	<0.0005	<0.0005	<0.0005	<0.0005	<0.0005	ND
MW-10R-FB		15-May-97	AEN	NA	NA	NA	NA	NA	NA	<0.0005	<0.0005	<0.0005	<0.0005	<0.0005	<0.0005	<0.0005	ND
MW-10R-FB		15-Sep-98	AEN	NA	NA	NA	NA	NA	NA	<0.0005	<0.0005	<0.0005	<0.0005	<0.0005	<0.0005	0.032	0.032
LF-23-FB		22-Aug-97	AEN	NA	NA	NA	NA	NA	NA	<0.0005	<0.0005	<0.0005	<0.0005	<0.0005	<0.0005	<0.0005	ND
MW-9-FB		11-Dec-97	AEN	NA	NA	NA	NA	NA	NA	<0.0005	<0.0005	<0.0005	<0.0005	<0.0005	<0.0005	<0.0005	ND
MW-6D-FB		09-Mar-98	AEN	NA	NA	NA	NA	NA	NA	<0.0005	<0.0005	<0.0005	<0.0005	<0.0005	<0.0005	<0.0005	ND
MW-34R-FB		16-Sep-98	ENT	NA	NA	NA	NA	NA	NA	<0.0005	<0.0005	<0.0005	<0.0005	<0.0005	<0.0005	<0.0005	ND
MW-7Z-FB	(52)	02-Mar-99	CT	NA	NA	NA	NA	NA	NA	<0.0005	<0.0005	<0.0005	<0.0005	<0.0005	<0.0005	<0.0005	0.025
MW-10-FB		21-Sep-99	CT	NA	NA	NA	NA	NA	NA	<0.0005	<0.0005	<0.0005	<0.0005	<0.0005	<0.0005	<0.0005	ND
MW-10-FB		09-May-00	CT	NA	NA	NA	NA	NA	NA	<0.0005	<0.0005	<0.0005	<0.0005	<0.0005	<0.0005	<0.0005	ND
MW-6D-FB		11-Sep-00	CT	NA	NA	NA	NA	NA	NA	<0.0005	<0.0005	<0.0005	<0.0005	<0.0005	<0.0005	<0.0005	ND
LF-22-FB		08-Feb-01	CT	NA	<.05	NA	NA	NA	NA	<0.0005	<0.0005	<0.0005	<0.0005	<0.0005	<0.0005	<0.0005	<0.0005
FBMWS		09-May-01	CT	NA	NA	NA	NA	NA	NA	<0.0005	<0.0005	<0.0005	<0.0005	<0.0005	<0.0005	<0.0005	<0.0005
MW12R		06-Dec-01	CT	NA	NA	NA	NA	NA	NA	<0.0005	<0.0005	<0.0005	<0.0005	<0.0005	<0.0005	<0.0005	<0.0005

Data entered by KCK Data proofed by REG and QA/QC by SXS.

**NOTES:**

**Key to abbreviations:**

- CT = Curis & Tompkins, Berkeley, California
- AEN = American Environmental Network in Pleasant Hill, California
- ANA = Incheape Testing Anamatrix, Inc., in San Jose, California
- A2AC - Aqua Air (A2) Analytical Corporation
- ENT = Entech Analytical Labs, Inc. in Sunnyvale, California
- MCL = U.S. EPA maximum contaminant levels; where available MCLs by the California Department of Health Services are provided.
- NA = parameter not analyzed
- ND = parameter not detected
- NE = none established
- RWQCB RBSL = Regional Water Quality Control Board Risk-Based Screening Level
- TPHg = Total petroleum hydrocarbons as gasoline
- TPHd = Total petroleum hydrocarbons as diesel
- 1,1-DCA = 1,1-Dichloroethane
- 1,2-DCA = 1,2-Dichloroethane
- cis/trans-1,2-DCE = cis and trans-1,2-Dichloroethene
- 1,1-DCE = 1,1-Dichloroethene
- PCE = Tetrachloroethene
- 1,1,1-TCA = 1,1,1-Trichloroethane
- TCE = Trichloroethene

Table 4  
 Summary of Groundwater Quality Data  
 East Baybridge Center  
 Emeryville and Oakland, California  
 (concentrations expressed in parts per million [ppm])

Well ID	Notes	Date Sampled	Lab	TPHg	TPHd	Benzene	Toluene	Ethyl- benzene	Total Xylenes	TCE	1,1,1-TCA	PCE	1,1-DCE	1,1-DCA	1,2-DCA	cis/trans-1,2- DCE	Total VOCs
---------	-------	--------------	-----	------	------	---------	---------	-------------------	------------------	-----	-----------	-----	---------	---------	---------	-----------------------	---------------

Notes:

- |   |  |
|---|--|
| <p>(1) 0.00081 ppm vinyl chloride<br/>         (2) 0.002 ppm chloroform<br/>         (3) 0.0008 ppm chloroform<br/>         (4) 0.002 ppm chloroform<br/>         (6) 0.002 ppm chloroform<br/>         (7) 0.0002 ppm chloroform<br/>         (8) 0.002 ppm chloroform<br/>         (9) 0.014 ppm chloroform<br/>         (10) Chloroform = 0.004<br/>         (11) Chloroform = 0.0006<br/>         (14) Chloroform = 0.006<br/>         (15) Bromodichloroethane = 0.010 ppm, vinyl chloride = 0.017<br/>         (17) Chloroform = 0.0012.<br/>         (18) Chloroform = 0.010, Bromodichloromethane = 0.0011<br/>         (19) 1,2-DCE = 0.194<br/>         (20) 1,2-DCE = 0.0024<br/>         (21) 1,2-DCE = 0.011<br/>         (22) Vinyl chloride = 0.025, 1,2-DCE = 0.087, Bromodichloromethane = 0.004<br/>         (23) 1,1,2-Trichlorotrifluoroethane = 0.0021<br/>         (24) Chloroform = 0.0015<br/>         (25) Bromodichloromethane = 0.001, Chloroform = 0.013<br/>         (26) Chloroform = 0.002<br/>         (27) Methylene Chloride-0.001<br/>         (28) Chloroform-0.030<br/>         (31) Methylene Chloride-0.010<br/>         (35) Chloroform-0.002<br/>         (36) Chloroform-0.001<br/>         (37) Chloroform-0.001<br/>         (38) Methylene Chloride-0.001<br/>         (39) Chloroform-0.0007<br/>         (40) Bromodichloromethane-0.0014, Chloroform-0.043<br/>         (41) Chloroform-0.0009<br/>         (42) TPH as Oil .0003<br/>         (43) Chloroform-0.0009<br/>         (44) Methyl t-Butyl Ether 0.063<br/>         (45) Chloroform 0.0006<br/>         (46) Bromodichloromethane 0.0010, Chloroform 0.015<br/>         (47) Vinyl chloride 0.006<br/>         (48) Vinyl chloride 0.006<br/>         (49) 1,1,2-Trichlorotrifluoroethane</p> | <p>(50) A duplicate sample was collected at MW-7D. The results for this sample were rejected based on Entech's conclusion that the sample reported false positive results because of cross contamination by the laboratory.<br/>         (51) Vinyl chloride .0072<br/>         (52) Chloroform 0.025<br/>         (53) Chloroform 0.0011<br/>         (54) Freon 113 0.0013<br/>         (55) Vinyl Chloride 0.015 and Trichlorofluoromethane 0.0027<br/>         (56) Chloroform 0.001<br/>         (57) Chloroform 0.0012<br/>         (58) Vinyl Chloride 0.010<br/>         (59) Chloroform 0.0023<br/>         (60) Vinyl chloride .0082<br/>         (61) Vinyl chloride .0029<br/>         (62) Chloroform 0.0006<br/>         (63) Vinyl chloride .0017<br/>         (64) Vinyl chloride .008<br/>         (65) Vinyl chloride .010<br/>         (66) Vinyl chloride .0092<br/>         (67) Vinyl chloride .0063<br/>         (68) Vinyl chloride .0066<br/>         (69) Vinyl chloride .0019 and Chloroform 0.0006<br/>         (70) Vinyl chloride .013<br/>         (71) Vinyl chloride .0007<br/>         (72) Vinyl chloride .0012<br/>         (73) Vinyl chloride .0052<br/>         (74) Vinyl chloride .011<br/>         (75) Chloroform 0.033<br/>         (76) Chloroform 0.037<br/>         (77) Chloroform 0.0006, and Vinyl chloride 0.0014<br/>         (78) Vinyl chloride 0.0005<br/>         (79) Vinyl chloride 0.0014<br/>         (80) Vinyl chloride 0.0063 and Chloroform 0.0005<br/>         (81) Vinyl chloride 0.0065<br/>         (82) Chloroform 0.0042</p> |
|---|--|



© Copyright 1997, Thomas Bros. Map ©  
 Alameda/Contra Costa County  
 1998 Edition

### Site Location Map

EAST BAY BRIDGE CENTER

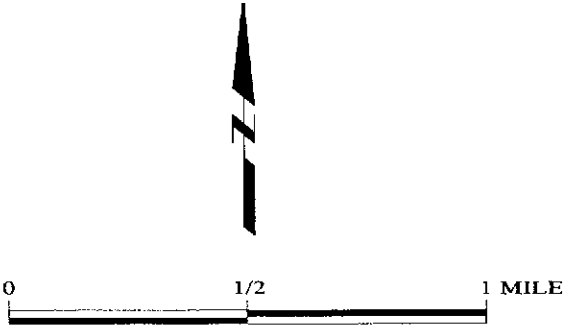
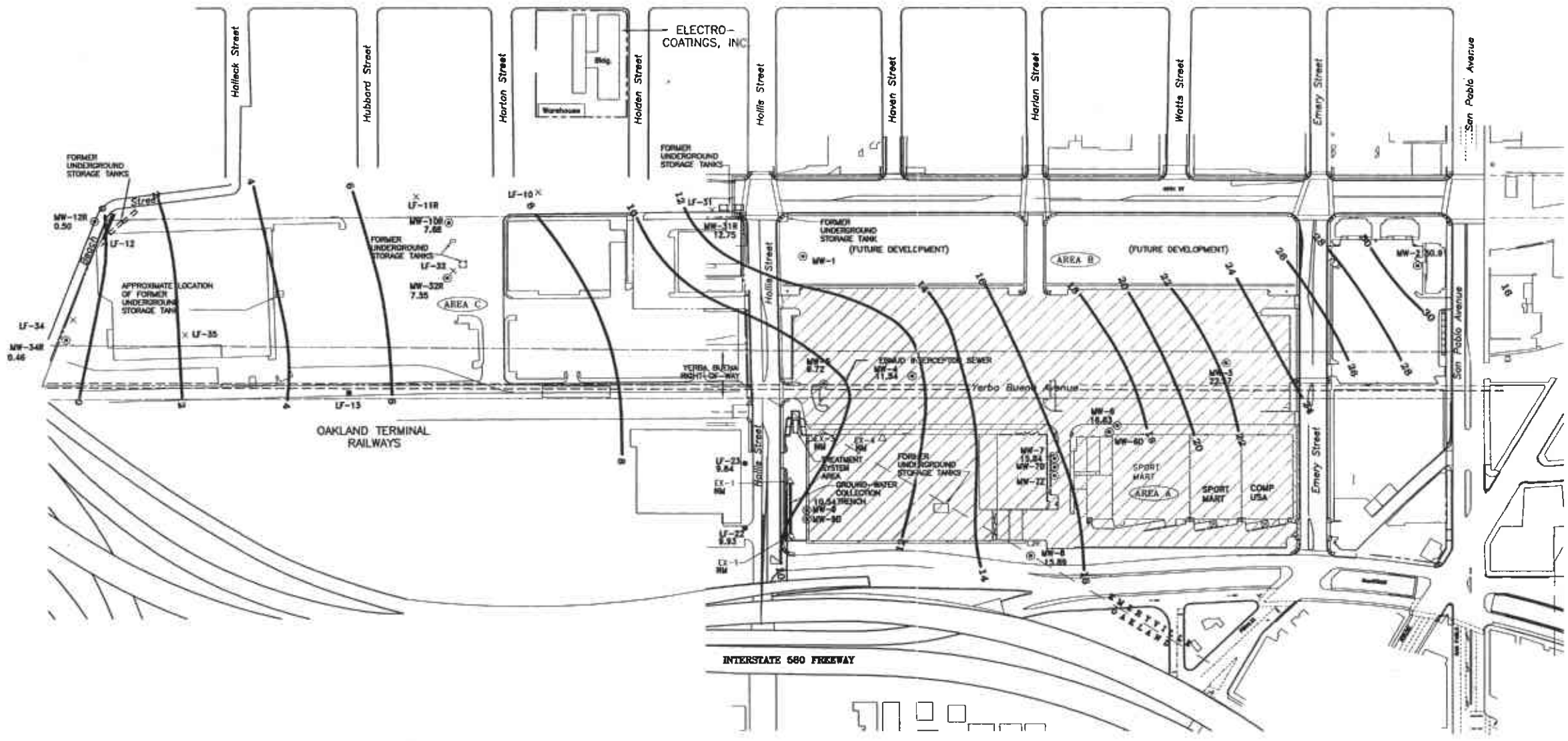
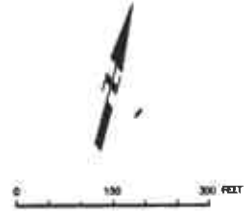


Figure 1



- EXPLANATION**
- ⊙ MONITORING WELL LOCATION
  - △ EXTRACTION WELL
  - × ABANDONED GROUND WATER MONITORING WELL
  - APPROXIMATE PROPERTY LINE
  - 29.31 GROUNDWATER ELEVATION
  - 12 GROUNDWATER ELEVATION CONTOUR (FEET, MSL)
  - RETAIL DEVELOPMENT WITH PETROLEUM AFFECTED SOIL ON SITE

REVISION	DESIGN	DRAWN	CHECKED	DATE

SCALE : \_\_\_\_\_  
 DESIGN : \_\_\_\_\_  
 DRAWN : \_\_\_\_\_  
 CHECKED : \_\_\_\_\_

**LEVINE • FRICKE**  
 ENGINEERS, HYDROLOGISTS & APPLIED SCIENTISTS  
 Emeryville, California

**CATELLUS DEVELOPMENT CORPORATION**

YERBA BUENA/EAST BAYBRIDGE DEVELOPMENT  
 Figure 2  
 SITE PLAN SHOWING  
 GROUNDWATER ELEVATIONS IN SHALLOW WELLS  
 DECEMBER 6, 2001

Project No.  
 1649

## FIELD PROCEDURES

Before sample collection, depth to static water was measured in each well and the volume of water in the well casing was calculated. Three to five well-casing volumes of groundwater were then purged from each well using a centrifugal pump or a bailer until indicator parameter readings (pH, specific conductance, and temperature) stabilized. Indicator parameters were measured using portable field instruments, and measurements were recorded on water-quality sampling forms. Purging and sampling equipment were steam cleaned before use at each well. Purged groundwater was pumped into the on-site treatment system.

After each well had been purged, groundwater samples were collected using a clean Teflon bailer. Samples were collected in containers appropriate for the laboratory analysis to be performed. Samples collected for volatile organic compounds (VOCs) analyses were collected by pouring groundwater directly from the bailer into laboratory-supplied, 40-milliliter volatile organic analysis glass vials. The vials were gently filled to overflowing, capped, and then inverted to check for trapped air. If an air bubble was observed, the vial was discarded and a new vial filled. Samples were immediately capped and placed in an ice-chilled cooler for transportation to the analytical laboratory.

Groundwater samples were submitted to Curtis & Tompkins, Ltd., under strict chain-of-custody protocols. For quality assurance/quality control, one duplicate sample was collected from well LF-23 and analyzed for VOCs.