

RECEIVED

By Alameda County Environmental Health at 11:29 am, Nov 21, 2014

November 6, 2014

Ms. Dilan Roe
Site Cleanup Program Manager
Alameda County Environmental Health
1131 Harbor Bay Parkway, Suite 250
Alameda, CA 94501-6577

Subject: Pre-Demolition Asbestos and Lead Inspection Report
Crown Chevrolet Cadillac Isuzu
7544 Dublin Boulevard
Dublin, California
Fuel Leak Case No. RO0003014

Dear Ms. Roe:

Enclosed please find the *Pre-Demolition Asbestos and Lead Inspection Plan* for the Crown Chevrolet Cadillac Isuzu site at 7544 Dublin Boulevard, in Dublin, California (Fuel Leak Case No. RO0003014, GeoTracker Global ID T10000001616). This document was prepared by KELLCO Services, Inc. on behalf of BWD Dublin LLC.

I declare under penalty of perjury that the information and/or recommendations contained in the attached document or report is true and correct to the best of my knowledge.

Please contact me at (415) 602-8128 or Tim Cannard of KELLCO Services, Inc. at (510) 786-9751 if you have any questions regarding this Work Plan.

Sincerely yours,

A handwritten signature in black ink, appearing to read 'Sean Murphy', is written over a horizontal line.

Sean Murphy
BWD Dublin LLC

Attachment: Pre-Demolition Asbestos and Lead Inspection Report

cc: Avery Whitmarsh, AMEC Environmental & Infrastructure, Inc.

Former Crown Chevy Dealership
7544 Dublin Road
Dublin, CA 94568



KELLCO Job # 1407-16

Pre-Demolition
Asbestos and Lead Inspection Report

for

BAYWEST Development
2 Henry Adams Street
Suite #450
San Francisco, CA 94103

August 11, 2014

Pre-Demolition Asbestos and Lead Paint Inspection Report

Date: August 11, 2014

KELLCO Job #: 1407-16

Client: BAYWEST Development
2 Henry Adams Street
Suite #450
San Francisco, CA 94103

Location: Former Crown Chevy Dealership
7544 Dublin Boulevard
Dublin, CA 94568

Date of Inspection: July 31, 2014, August 1, 2014, August 4, 2014 & August 5, 2014

Inspectors: Dan Gayton CAC #97-2258, CDPH Lead #2511

Lab Reports: Asbestos = 193-14-2638, 193-14-2644, 193-14-2645, 193-14-2646, 193-14-2651
Lead = 193-14-2639, 193-14-2640, 193-14-2641, 193-14-2642, 193-14-2643

Description Of The Inspected Area: The inspection was conducted on the interior and exterior of a car dealership located in Dublin, California. KELLCO could not access the "Service Island" during this inspection because the door was locked and a key could not be provided.

Background

This is a pre-demolition asbestos and lead inspection on a former Crown Chevy Dealership located in Dublin, California.

Synopsis

Asbestos was found in the following materials:

Body Shop

- Roof Mastic

- White Multiple Layers of Floor Tile & Mastic
- Drywall Tape Joint Compound

Chevy Building

- Vinyl Sheet Flooring – White
- Acoustical Ceiling Spray
- Rough Wall Texture

Service Island (Not Accessible) Assumed ACM Material:

- Drywall Texture & Joint Compound
- Floor Matting Mastic
- Red Ceramic Tile Grout

Lead paint was found in the following tested materials;

Chevy Building

- Interior Paint

Service Island – Not Accessible

- Exterior Paint

Body Shop

- Exterior Paint

Service Shop

- Interior Paint
- Exterior Paint

Cadillac Building

- Interior Paint

Fluorescent lights, fluorescent fixture ballasts and thermostats may contain PCB's and mercury.

Chevy Building

- 140 Fluorescent Light Tubes
- 80 PCB Fluorescent Light Ballasts

Cadillac Building

- 40 Fluorescent Light Tubes
- 15 PCB Fluorescent Light Ballasts

Service Shop

- 80 Fluorescent Light Tubes
- 25 PCB Fluorescent Light Ballasts

Body Shop

- 350 Fluorescent Light Tubes
- 87 PCB Fluorescent Light Ballasts

Service Island (Not Accessible)

- 20 Fluorescent Light Tubes
- 8 PCB Fluorescent Light Ballasts

Please Note: The stand alone transformers on North West side of properties parking lot is assumed to contain PCB's.

About the Inspection

The inspection performed was both visual and tactile. Samples were taken of suspect materials located at the interior and exterior of the survey area.

The inspection was a reasonable attempt to find suspect materials that were hidden within walls, behind structures, in vertical shafts or in areas not normally accessible. If any non-sampled materials are uncovered, these should be submitted for asbestos and/or lead paint analysis.

- **Asbestos Findings**

Asbestos samples were analyzed in Schneider Laboratories Global by Polarized Light Microscopy, the EPA's recommended method. Copies of the full laboratory reports are attached. These valuable reports can be utilized as future reference to determine if a particular material was tested.

Photographs of sampled materials are included. Sample locations are noted on the attached not-to-scale drawing.

The determination of a material to be Asbestos Containing Material (ACM) was made either by direct sampling or by homogeneity with at least one positive sample of the same material.

Materials that tested positive for asbestos are:

BODY SHOP – ASBESTOS POSITIVE MATERIALS							
LAB #	KELCO #	LOCATION	LAYER	MATERIAL	DESCRIPTION	ACM TYPE	ACM %
32275880	35	Roof N	1	Roof Mastic	Black, Bituminous	CHRYSTILE	5%
32275881	36	Roof Center	1	Roof Mastic	Black, Bituminous	CHRYSTILE	5%
32275882	37	Roof S	1	Roof Mastic	Black, Bituminous	CHRYSTILE	5%
32276780	48	Parts NE Room	5	Flooring	Beige, Organically Bound	CHRYSTILE	3%
32276780	48	Parts NE Room	6	Backing/Mastic	Gray/Yellow, Fibrous/Brittle	CHRYSTILE	25%

BODY SHOP – ASBESTOS POSITIVE MATERIALS							
LAB #	KELCO #	LOCATION	LAYER	MATERIAL	DESCRIPTION	ACM TYPE	ACM %
32276781	49	Parts NE Room	5	Flooring	Beige, Organically Bound	CHRYSTILE	5%
32276781	49	Parts NE Room	6	Backing/Mastic	Gray/Yellow, Fibrous/Brittle	CHRYSTILE	20%
32276782	50	Parts NE Room	5	Flooring	Beige, Organically Bound	CHRYSTILE	6%
32276782	50	Parts NE Room	6	Backing/Mastic	Gray/Yellow, Fibrous/Brittle	CHRYSTILE	15%
32276783	51	Parts South Wall	2	Joint Compound	White, Granular	CHRYSTILE	2%

CHEVY BUILDING – ASBESTOS POSITIVE MATERIALS							
LAB #	KELCO #	LOCATION	LAYER	MATERIAL	DESCRIPTION	ACM TYPE	ACM %
32275982	49	Show Room W Side	1	Sheet Flooring	White, Org.Bound/Fibrous	CHRYSTILE	15%
32275983	50	Show Room W Side	1	Sheet Flooring	White, Org.Bound/Fibrous	CHRYSTILE	15%
32275993	60	TV Room S	1	Spray On Ceiling	White, Granular	CHRYSTILE	3%
32275994	61	E Room Large	1	Spray On Ceiling	White, Granular	CHRYSTILE	3%
32275995	62	SE Corner Room	1	Spray On Ceiling	White, Granular	CHRYSTILE	2%
32275996	63	Center Room	1	Spray On Ceiling	White, Granular	CHRYSTILE	2%
32275997	64	Center W Room	1	Spray On Ceiling	White, Granular	CHRYSTILE	3%
32276006	73	SW Large Room	2	Rough Wall Texture	Beige, Granular	CHRYSTILE	2%

Samples that have less than 10% asbestos can be submitted for further analysis by the Point Count method as described elsewhere in this document. If the Point Count method determines that the material contains less than 1% asbestos, these materials can be disposed of as non-hazardous asbestos containing construction waste.

Tested materials that were none detected for asbestos are:

BODY SHOP ASBESTOS NEGATIVE						
LAB #	KELLCO #	LOCATION	LAYER	MATERIAL	DESCRIPTION	NON-ACM
32275846	1	Ext Wall N	1	Stucco	Gray, Hard	NON FIBROUS MATERIAL
32275847	2	Ext Wall NE Corner	1	Stucco	Gray, Hard	NON FIBROUS MATERIAL
32275848	3	Ext Wall SW Corner	1	Cinder Block	Gray, Hard	NON FIBROUS MATERIAL
32275849	4	Ext Wall NW Corner	1	Stucco	Gray, Hard	NON FIBROUS MATERIAL
32275850	5	Ext NW Corner	1	Concrete	Gray, Hard	NON FIBROUS MATERIAL
32275851	6	Ext W Side	1	Concrete	Gray, Hard	NON FIBROUS MATERIAL
32275852	7	Ext Wall W Center	1	Cinder Block	Gray, Hard	NON FIBROUS MATERIAL
32275853	8	Ext Wall NW Corner	1	Cinder Block	Gray, Hard	NON FIBROUS MATERIAL
32275854	9	Int Center Floor	1	Concrete	Gray, Hard	NON FIBROUS MATERIAL
32275855	10	Int Shop Floor Center	1	Caulk	Gray, Brittle	NON FIBROUS MATERIAL
32275855	10	Int Shop Floor Center	1	Caulk	Gray, Brittle	CELLULOSE FIBER
32275856	11	Int Shop North	1	Caulk	Gray, Brittle	CELLULOSE FIBER
32275856	11	Int Shop North	1	Caulk	Gray, Brittle	NON FIBROUS MATERIAL
32275857	12	Int Shop North	1	Caulk	Gray, Brittle	CELLULOSE FIBER
32275857	12	Int Shop North	1	Caulk	Gray, Brittle	NON FIBROUS MATERIAL
32275858	13	Office West	1	Wall Texture	White, Powdery	MINERAL/GLASS WOOL
32275858	13	Office West	1	Wall Texture	White, Powdery	NON FIBROUS MATERIAL
32275858	13	Office West	1	Wall Texture	White, Powdery	CELLULOSE FIBER

BODY SHOP ASBESTOS NEGATIVE						
LAB #	KELLCO #	LOCATION	LAYER	MATERIAL	DESCRIPTION	NON-ACM
32275858	13	Office West	2	Joint Compound	White, Granular	NON FIBROUS MATERIAL
32275859	14	Office West	1	Wall Texture	White, Powdery	NON FIBROUS MATERIAL
32275859	14	Office West	1	Wall Texture	White, Powdery	MINERAL/GLASS WOOL
32275859	14	Office West	1	Wall Texture	White, Powdery	CELLULOSE FIBER
32275859	14	Office West	2	Joint Compound	White, Granular	NON FIBROUS MATERIAL
32275860	15	Office Center	1	Wall Texture	White, Powdery	MINERAL/GLASS WOOL
32275860	15	Office Center	1	Wall Texture	White, Powdery	NON FIBROUS MATERIAL
32275860	15	Office Center	1	Wall Texture	White, Powdery	CELLULOSE FIBER
32275860	15	Office Center	2	Joint Compound	White, Granular	NON FIBROUS MATERIAL
32275861	16	Office Rear	1	Wall Texture	White, Powdery	CELLULOSE FIBER
32275861	16	Office Rear	1	Wall Texture	White, Powdery	NON FIBROUS MATERIAL
32275861	16	Office Rear	1	Wall Texture	White, Powdery	MINERAL/GLASS WOOL
32275861	16	Office Rear	2	Joint Compound	White, Granular	NON FIBROUS MATERIAL
32275862	17	Office Rear	1	Wall Texture	White, Powdery	CELLULOSE FIBER
32275862	17	Office Rear	1	Wall Texture	White, Powdery	NON FIBROUS MATERIAL
32275862	17	Office Rear	1	Wall Texture	White, Powdery	MINERAL/GLASS WOOL
32275862	17	Office Rear	2	Joint Compound	White, Granular	NON FIBROUS MATERIAL
32275863	18	Outside Office E Wall	1	Wallboard	White, Powdery	NON FIBROUS MATERIAL
32275863	18	Outside Office E Wall	1	Wallboard	White, Powdery	MINERAL/GLASS WOOL

BODY SHOP ASBESTOS NEGATIVE						
LAB #	KELLCO #	LOCATION	LAYER	MATERIAL	DESCRIPTION	NON-ACM
32275863	18	Outside Office E Wall	1	Wallboard	White, Powdery	CELLULOSE FIBER
32275863	18	Outside Office E Wall	2	Joint Compound	Tan, Granular	NON FIBROUS MATERIAL
32275863	18	Outside Office E Wall	2	Joint Compound	Tan, Granular	CELLULOSE FIBER
32275864	19	Shop Partition Wall	1	Wallboard	Beige, Powdery	CELLULOSE FIBER
32275864	19	Shop Partition Wall	1	Wallboard	Beige, Powdery	NON FIBROUS MATERIAL
32275864	19	Shop Partition Wall	2	Joint Compound	White, Granular	MINERAL/GLASS WOOL
32275864	19	Shop Partition Wall	2	Joint Compound	White, Granular	NON FIBROUS MATERIAL
32275865	20	Shop N Wall	1	Wallboard	White, Powdery	MINERAL/GLASS WOOL
32275865	20	Shop N Wall	1	Wallboard	White, Powdery	CELLULOSE FIBER
32275865	20	Shop N Wall	1	Wallboard	White, Powdery	NON FIBROUS MATERIAL
32275865	20	Shop N Wall	2	Joint Compound	White, Granular	CELLULOSE FIBER
32275865	20	Shop N Wall	2	Joint Compound	White, Granular	NON FIBROUS MATERIAL
32275866	21	Office W	1	Carpet Mastic	Yellow, Soft	NON FIBROUS MATERIAL
32275866	21	Office W	1	Carpet Mastic	Yellow, Soft	CELLULOSE FIBER
32275866	21	Office W	1	Carpet Mastic	Yellow, Soft	MINERAL/GLASS WOOL
32275866	21	Office W	2	Floor Tile	Black, Organically Bound	NON FIBROUS MATERIAL
32275866	21	Office W	3	Mastic/Granular Mtrl	Yellow/Gray, Soft/Granular	CELLULOSE FIBER
32275866	21	Office W	3	Mastic/Granular Mtrl	Yellow/Gray, Soft/Granular	NON FIBROUS MATERIAL
32275867	22	Office W	1	Carpet Mastic	Yellow, Soft	MINERAL/GLASS WOOL

BODY SHOP ASBESTOS NEGATIVE						
LAB #	KELCO #	LOCATION	LAYER	MATERIAL	DESCRIPTION	NON-ACM
32275867	22	Office W	1	Carpet Mastic	Yellow, Soft	CELLULOSE FIBER
32275867	22	Office W	1	Carpet Mastic	Yellow, Soft	NON FIBROUS MATERIAL
32275867	22	Office W	2	Floor Tile	Black, Organically Bound	NON FIBROUS MATERIAL
32275867	22	Office W	3	Mastic/Granular Mtrl	Yellow/Gray, Soft/Granular	CELLULOSE FIBER
32275867	22	Office W	3	Mastic/Granular Mtrl	Yellow/Gray, Soft/Granular	NON FIBROUS MATERIAL
32275868	23	Office Center	1	Floor Tile	Black, Organically Bound	NON FIBROUS MATERIAL
32275868	23	Office Center	2	Mastic	Yellow, Soft	NON FIBROUS MATERIAL
32275869	24	Office Rear	1	Carpet Mastic	Yellow, Soft	NON FIBROUS MATERIAL
32275869	24	Office Rear	2	Floor Tile	Tan, Organically Bound	NON FIBROUS MATERIAL
32275869	24	Office Rear	3	Mastic	Brown, Soft	NON FIBROUS MATERIAL
32275869	24	Office Rear	4	Leveling Compound	White, Granular	NON FIBROUS MATERIAL
32275870	25	Office Rear	1	Carpet Mastic	Yellow, Soft	NON FIBROUS MATERIAL
32275870	25	Office Rear	2	Floor Tile	Tan, Organically Bound	NON FIBROUS MATERIAL
32275870	25	Office Rear	3	Mastic	Brown, Soft	NON FIBROUS MATERIAL
32275870	25	Office Rear	4	Leveling Compound	White, Granular	NON FIBROUS MATERIAL
32275871	26	Office Rear	1	Floor Tile	Tan, Organically Bound	NON FIBROUS MATERIAL
32275871	26	Office Rear	2	Mastic	Yellow, Soft	CELLULOSE FIBER
32275871	26	Office Rear	2	Mastic	Yellow, Soft	NON FIBROUS MATERIAL
32275872	27	Office Rear	1	Leveling Compound	White, Granular	NON FIBROUS MATERIAL

BODY SHOP ASBESTOS NEGATIVE						
LAB #	KELLCO #	LOCATION	LAYER	MATERIAL	DESCRIPTION	NON-ACM
32275872	27	Office Rear	2	Mastic	Yellow, Soft	CELLULOSE FIBER
32275872	27	Office Rear	2	Mastic	Yellow, Soft	NON FIBROUS MATERIAL
32275873	28	Office Rear	1	Leveling Compound	White, Granular	NON FIBROUS MATERIAL
32275873	28	Office Rear	2	Mastic	Yellow, Soft	CELLULOSE FIBER
32275873	28	Office Rear	2	Mastic	Yellow, Soft	NON FIBROUS MATERIAL
32275874	29	Office Center	1	Baseboard	Black, Rubbery	NON FIBROUS MATERIAL
32275874	29	Office Center	2	Mastic	White/Brown, Soft/Fibrous	NON FIBROUS MATERIAL
32275874	29	Office Center	2	Mastic	White/Brown, Soft/Fibrous	CELLULOSE FIBER
32275875	30	Office Center	1	Baseboard	Black, Rubbery	NON FIBROUS MATERIAL
32275875	30	Office Center	2	Mastic	White/Brown, Soft/Fibrous	NON FIBROUS MATERIAL
32275875	30	Office Center	2	Mastic	White/Brown, Soft/Fibrous	CELLULOSE FIBER
32275876	31	Office Rear	1	Baseboard	Black, Rubbery	NON FIBROUS MATERIAL
32275876	31	Office Rear	2	Mastic	White/Brown, Soft/Fibrous	CELLULOSE FIBER
32275876	31	Office Rear	2	Mastic	White/Brown, Soft/Fibrous	NON FIBROUS MATERIAL
32275877	32	Office Center	1	Ceiling Tile	White, Fibrous	CELLULOSE FIBER
32275877	32	Office Center	1	Ceiling Tile	White, Fibrous	MINERAL/GLASS WOOL
32275877	32	Office Center	1	Ceiling Tile	White, Fibrous	NON FIBROUS MATERIAL
32275878	33	Office Rear	1	Ceiling Tile	White, Fibrous	MINERAL/GLASS WOOL
32275878	33	Office Rear	1	Ceiling Tile	White, Fibrous	NON FIBROUS MATERIAL

BODY SHOP ASBESTOS NEGATIVE						
LAB #	KELLCO #	LOCATION	LAYER	MATERIAL	DESCRIPTION	NON-ACM
32275878	33	Office Rear	1	Ceiling Tile	White, Fibrous	CELLULOSE FIBER
32275879	34	Office Rear	1	Ceiling Tile	White, Fibrous	NON FIBROUS MATERIAL
32275879	34	Office Rear	1	Ceiling Tile	White, Fibrous	MINERAL/GLASS WOOL
32275879	34	Office Rear	1	Ceiling Tile	White, Fibrous	CELLULOSE FIBER
32275883	38	Roof HVAC S Ducts	1	Duct Material	Silver, Soft	NON FIBROUS MATERIAL
32275883	38	Roof HVAC S Ducts	1	Duct Material	Silver, Soft	MINERAL/GLASS WOOL
32275883	38	Roof HVAC S Ducts	1	Duct Material	Silver, Soft	CELLULOSE FIBER
32275884	39	Roof HVAC S Ducts	1	Duct Material	Silver, Soft	NON FIBROUS MATERIAL
32275884	39	Roof HVAC S Ducts	1	Duct Material	Silver, Soft	CELLULOSE FIBER
32275884	39	Roof HVAC S Ducts	1	Duct Material	Silver, Soft	MINERAL/GLASS WOOL
32275885	40	Roof HVAC S Ducts	1	Duct Material	Silver, Soft	NON FIBROUS MATERIAL
32275885	40	Roof HVAC S Ducts	1	Duct Material	Silver, Soft	MINERAL/GLASS WOOL
32275885	40	Roof HVAC S Ducts	1	Duct Material	Silver, Soft	CELLULOSE FIBER
32276773	41	Parts NE Room	1	Wall Texture	White, Granular	NON FIBROUS MATERIAL
32276773	41	Parts NE Room	2	Powdery Material	White, Powdery	CELLULOSE FIBER
32276773	41	Parts NE Room	2	Powdery Material	White, Powdery	NON FIBROUS MATERIAL
32276774	42	Parts NE Room	1	Ceiling Tile	White, Fibrous	CELLULOSE FIBER
32276774	42	Parts NE Room	1	Ceiling Tile	White, Fibrous	MINERAL/GLASS WOOL
32276774	42	Parts NE Room	1	Ceiling Tile	White, Fibrous	NON FIBROUS MATERIAL

BODY SHOP ASBESTOS NEGATIVE						
LAB #	KELLCO #	LOCATION	LAYER	MATERIAL	DESCRIPTION	NON-ACM
32276775	43	Parts Center North	1	Ceramic Tile	Black, Hard	NON FIBROUS MATERIAL
32276775	43	Parts Center North	2	Grout	Gray, Granular	NON FIBROUS MATERIAL
32276775	43	Parts Center North	3	Granular Material	Dark Gray, Granular	NON FIBROUS MATERIAL
32276776	44	Parts Center North	1	Ceramic Tile	Black, Hard	NON FIBROUS MATERIAL
32276776	44	Parts Center North	2	Grout	Gray, Granular	NON FIBROUS MATERIAL
32276776	44	Parts Center North	3	Granular Material	Dark Gray, Granular	NON FIBROUS MATERIAL
32276777	45	Parts Center North	1	Ceramic Tile	Black, Hard	NON FIBROUS MATERIAL
32276777	45	Parts Center North	2	Grout	Gray, Granular	NON FIBROUS MATERIAL
32276777	45	Parts Center North	3	Granular Material	Dark Gray, Granular	NON FIBROUS MATERIAL
32276778	46	Parts Center North	1	Ceiling Tile	White, Fibrous	NON FIBROUS MATERIAL
32276778	46	Parts Center North	1	Ceiling Tile	White, Fibrous	CELLULOSE FIBER
32276778	46	Parts Center North	1	Ceiling Tile	White, Fibrous	MINERAL/GLASS WOOL
32276779	47	Parts NW Room	1	Wall Texture	White, Granular	NON FIBROUS MATERIAL
32276779	47	Parts NW Room	2	Powdery Material	White, Powdery	CELLULOSE FIBER
32276779	47	Parts NW Room	2	Powdery Material	White, Powdery	NON FIBROUS MATERIAL
32276780	48	Parts NE Room	1	Flooring	Gray, Organically Bound	NON FIBROUS MATERIAL
32276780	48	Parts NE Room	2	Mastic	Yellow, Soft	NON FIBROUS MATERIAL
32276780	48	Parts NE Room	3	Flooring	Beige, Organically Bound	NON FIBROUS MATERIAL
32276780	48	Parts NE Room	4	Mastics	Black/Yellow, Bituminous/Soft	NON FIBROUS MATERIAL

BODY SHOP ASBESTOS NEGATIVE						
LAB #	KELLCO #	LOCATION	LAYER	MATERIAL	DESCRIPTION	NON-ACM
32276780	48	Parts NE Room	4	Mastics	Black/Yellow, Bituminous/Soft	CELLULOSE FIBER
32276781	49	Parts NE Room	1	Flooring	Gray, Organically Bound	NON FIBROUS MATERIAL
32276781	49	Parts NE Room	2	Mastic	Yellow, Soft	NON FIBROUS MATERIAL
32276781	49	Parts NE Room	3	Flooring	Beige, Organically Bound	NON FIBROUS MATERIAL
32276781	49	Parts NE Room	4	Mastics	Black/Yellow, Bituminous/Soft	NON FIBROUS MATERIAL
32276781	49	Parts NE Room	4	Mastics	Black/Yellow, Bituminous/Soft	CELLULOSE FIBER
32276782	50	Parts NE Room	1	Flooring	Gray, Organically Bound	NON FIBROUS MATERIAL
32276782	50	Parts NE Room	2	Mastic	Yellow, Soft	NON FIBROUS MATERIAL
32276782	50	Parts NE Room	3	Flooring	Beige, Organically Bound	NON FIBROUS MATERIAL
32276782	50	Parts NE Room	4	Mastics	Black/Yellow, Bituminous/Soft	NON FIBROUS MATERIAL
32276782	50	Parts NE Room	4	Mastics	Black/Yellow, Bituminous/Soft	CELLULOSE FIBER
32276783	51	Parts South Wall	1	Wallboard	White, Powdery	CELLULOSE FIBER
32276783	51	Parts South Wall	1	Wallboard	White, Powdery	NON FIBROUS MATERIAL
32276784	52	Parts SE Room	1	Carpet Mastic	Yellow, Soft	CELLULOSE FIBER
32276784	52	Parts SE Room	1	Carpet Mastic	Yellow, Soft	NON FIBROUS MATERIAL
32276785	53	Parts SE Room	1	Baseboard	Black, Rubbery	NON FIBROUS MATERIAL
32276785	53	Parts SE Room	2	Baseboard Mastic	Tan, Soft	CELLULOSE FIBER
32276785	53	Parts SE Room	2	Baseboard Mastic	Tan, Soft	NON FIBROUS MATERIAL
32276786	54	Parts SE Room	1	Wall Texture	White, Granular	NON FIBROUS MATERIAL

BODY SHOP ASBESTOS NEGATIVE						
LAB #	KELLCO #	LOCATION	LAYER	MATERIAL	DESCRIPTION	NON-ACM
32276786	54	Parts SE Room	2	Powdery Material	White, Powdery	CELLULOSE FIBER
32276786	54	Parts SE Room	2	Powdery Material	White, Powdery	NON FIBROUS MATERIAL
32276787	55	Parts NW Room	1	Wallboard	White, Powdery	NON FIBROUS MATERIAL
32276787	55	Parts NW Room	1	Wallboard	White, Powdery	CELLULOSE FIBER
32276787	55	Parts NW Room	2	Joint Compound	White, Granular	MINERAL/GLASS WOOL
32276787	55	Parts NW Room	2	Joint Compound	White, Granular	NON FIBROUS MATERIAL
32276788	56	Parts NW Room	1	Baseboard Mastic	Tan, Soft	SYNTHETIC FIBER
32276788	56	Parts NW Room	1	Baseboard Mastic	Tan, Soft	NON FIBROUS MATERIAL
32276789	57	Parts Bath	1	Ceramic Tile	Yellow, Hard	NON FIBROUS MATERIAL
32276789	57	Parts Bath	2	Grout	Gray, Granular	NON FIBROUS MATERIAL
32276789	57	Parts Bath	3	Granular Material	White, Granular	NON FIBROUS MATERIAL
32276790	58	Parts Bath	1	Ceramic Tile	Yellow, Hard	NON FIBROUS MATERIAL
32276790	58	Parts Bath	2	Grout	Gray, Granular	NON FIBROUS MATERIAL
32276790	58	Parts Bath	3	Granular Material	White, Granular	NON FIBROUS MATERIAL
32276791	59	Parts Bath	1	Ceramic Tile	White, Hard	NON FIBROUS MATERIAL
32276791	59	Parts Bath	2	Grout	Gray, Granular	NON FIBROUS MATERIAL
32276791	59	Parts Bath	3	Granular Material	White, Granular	NON FIBROUS MATERIAL
32276792	60	Parts Bath	1	Ceramic Tile	Yellow, Hard	NON FIBROUS MATERIAL
32276792	60	Parts Bath	2	Grout	Gray, Granular	NON FIBROUS MATERIAL

BODY SHOP ASBESTOS NEGATIVE						
LAB #	KELLCO #	LOCATION	LAYER	MATERIAL	DESCRIPTION	NON-ACM
32276792	60	Parts Bath	3	Granular Material	White, Granular	NON FIBROUS MATERIAL
32276793	61	Parts Bath	1	Ceramic Tile	Yellow, Hard	NON FIBROUS MATERIAL
32276793	61	Parts Bath	2	Grout	Gray, Granular	NON FIBROUS MATERIAL
32276793	61	Parts Bath	3	Granular Material	White, Granular	NON FIBROUS MATERIAL
32276794	62	Parts Bath	1	Ceramic Tile	Yellow, Hard	NON FIBROUS MATERIAL
32276794	62	Parts Bath	2	Grout	Gray, Granular	NON FIBROUS MATERIAL
32276794	62	Parts Bath	3	Granular Material	White, Granular	NON FIBROUS MATERIAL

CHEVY BUILDING – ASBESTOS NEGATIVE MATERIALS						
LAB #	KELLCO #	LOCATION	LAYER	MATERIAL	DESCRIPTION	NON-ACM
32275933	1	Ext NW Wall	1	Stucco	White, Granular	NON FIBROUS MATERIAL
32275934	2	Ext N Side	1	Concrete	White, Granular	NON FIBROUS MATERIAL
32275935	3	Ext NW Corner	1	Asphalt Material	Black, Granular	NON FIBROUS MATERIAL
32275936	4	Ext W Side	1	Concrete	White, Granular	NON FIBROUS MATERIAL
32275937	5	Ext W Wall	1	Stucco	White, Granular	NON FIBROUS MATERIAL
32275938	6	Ext SE Corner	1	Stucco	White, Granular	NON FIBROUS MATERIAL
32275939	7	Ext SE Area	1	Asphalt Material	Black, Granular	NON FIBROUS MATERIAL
32275940	8	Ext NE Corner	1	Concrete	White, Granular	NON FIBROUS MATERIAL
32275941	9	Ext NE Area	1	Asphalt Material	Black, Granular	NON FIBROUS MATERIAL
32275942	10	Int Front Show Room	1	Ceiling Tile	White, Fibrous	MINERAL/GLASS WOOL

CHEVY BUILDING – ASBESTOS NEGATIVE MATERIALS						
LAB #	KELLCO #	LOCATION	LAYER	MATERIAL	DESCRIPTION	NON-ACM
32275942	10	Int Front Show Room	1	Ceiling Tile	White, Fibrous	CELLULOSE FIBER
32275942	10	Int Front Show Room	1	Ceiling Tile	White, Fibrous	NON FIBROUS MATERIAL
32275943	11	Int Front Show Room	1	Ceiling Tile	White, Fibrous	MINERAL/GLASS WOOL
32275943	11	Int Front Show Room	1	Ceiling Tile	White, Fibrous	NON FIBROUS MATERIAL
32275943	11	Int Front Show Room	1	Ceiling Tile	White, Fibrous	CELLULOSE FIBER
32275944	12	Int Front Show Room	1	Ceiling Tile	White, Fibrous	CELLULOSE FIBER
32275944	12	Int Front Show Room	1	Ceiling Tile	White, Fibrous	MINERAL/GLASS WOOL
32275944	12	Int Front Show Room	1	Ceiling Tile	White, Fibrous	NON FIBROUS MATERIAL
32275945	13	Roof Center HVAC Area	1	Spray On Foam	White, Foamy	NON FIBROUS MATERIAL
32275946	14	Roof Center HVAC Area	1	Spray On Foam	White, Foamy	NON FIBROUS MATERIAL
32275947	15	Roof Center HVAC Area	1	Spray On Foam	White, Foamy	NON FIBROUS MATERIAL
32275948	16	Roof HVAC Ducts	1	Duct Mastic	Black, Bituminous	NON FIBROUS MATERIAL
32275948	16	Roof HVAC Ducts	1	Duct Mastic	Black, Bituminous	CELLULOSE FIBER
32275949	17	Roof HVAC Ducts	1	Duct Mastic	Black, Bituminous	CELLULOSE FIBER
32275949	17	Roof HVAC Ducts	1	Duct Mastic	Black, Bituminous	NON FIBROUS MATERIAL
32275950	18	Roof HVAC Ducts	1	Duct Mastic	Black, Bituminous	NON FIBROUS MATERIAL
32275950	18	Roof HVAC Ducts	1	Duct Mastic	Black, Bituminous	CELLULOSE FIBER
32275951	19	Roof Center	1	Roof Mastic	Black, Rubbery	NON FIBROUS MATERIAL
32275952	20	Roof N	1	Roof Mastic	Black, Rubbery	NON FIBROUS MATERIAL

CHEVY BUILDING – ASBESTOS NEGATIVE MATERIALS						
LAB #	KELLCO #	LOCATION	LAYER	MATERIAL	DESCRIPTION	NON-ACM
32275953	21	Roof S	1	Roof Mastic	Black, Rubbery	NON FIBROUS MATERIAL
32275954	22	Women's Bath Wall	1	Ceramic Tile	Black/White, Hard	NON FIBROUS MATERIAL
32275954	22	Women's Bath Wall	2	Grout	Brown, Granular	NON FIBROUS MATERIAL
32275954	22	Women's Bath Wall	3	Granular Material	Gray, Granular	NON FIBROUS MATERIAL
32275955	23	Women's Bath Wall	1	Ceramic Tile	White/Orange, Hard	NON FIBROUS MATERIAL
32275955	23	Women's Bath Wall	2	Grout	Brown, Granular	NON FIBROUS MATERIAL
32275955	23	Women's Bath Wall	3	Granular Material	Gray, Granular	NON FIBROUS MATERIAL
32275956	24	Women's Bath Wall	1	Ceramic Tile	White/Black, Hard	NON FIBROUS MATERIAL
32275956	24	Women's Bath Wall	2	Grout	Brown, Granular	NON FIBROUS MATERIAL
32275956	24	Women's Bath Wall	3	Granular Material	Gray, Granular	NON FIBROUS MATERIAL
32275957	25	Women's Bath Floor	1	Ceramic Tile	Tan, Hard	NON FIBROUS MATERIAL
32275957	25	Women's Bath Floor	2	Grout	Brown, Granular	NON FIBROUS MATERIAL
32275957	25	Women's Bath Floor	3	Granular Material	Gray, Granular	NON FIBROUS MATERIAL
32275958	26	Women's Bath Floor	1	Ceramic Tile	Tan, Hard	NON FIBROUS MATERIAL
32275958	26	Women's Bath Floor	2	Grout	Brown, Granular	NON FIBROUS MATERIAL
32275958	26	Women's Bath Floor	3	Granular Material	Gray, Granular	NON FIBROUS MATERIAL
32275959	27	Women's Bath Floor	1	Ceramic Tile	Tan, Hard	NON FIBROUS MATERIAL
32275959	27	Women's Bath Floor	2	Grout	Brown, Granular	NON FIBROUS MATERIAL
32275959	27	Women's Bath Floor	3	Granular Material	Gray, Granular	NON FIBROUS MATERIAL

CHEVY BUILDING – ASBESTOS NEGATIVE MATERIALS						
LAB #	KELLCO #	LOCATION	LAYER	MATERIAL	DESCRIPTION	NON-ACM
32275960	28	Hall By Bath	1	Sheet Flooring	Black/Green, Organically Bound	NON FIBROUS MATERIAL
32275960	28	Hall By Bath	2	Mastic	Yellow, Soft	CELLULOSE FIBER
32275960	28	Hall By Bath	2	Mastic	Yellow, Soft	NON FIBROUS MATERIAL
32275961	29	Hall By Bath	1	Flooring	Tan, Hard	NON FIBROUS MATERIAL
32275961	29	Hall By Bath	2	Soft Material	Brown, Soft	CELLULOSE FIBER
32275961	29	Hall By Bath	2	Soft Material	Brown, Soft	NON FIBROUS MATERIAL
32275962	30	Hall By Bath	1	Baseboard	Black, Rubbery	NON FIBROUS MATERIAL
32275962	30	Hall By Bath	2	Baseboard Mastic	Tan, Brittle	CELLULOSE FIBER
32275962	30	Hall By Bath	2	Baseboard Mastic	Tan, Brittle	NON FIBROUS MATERIAL
32275962	30	Hall By Bath	2	Baseboard Mastic	Tan, Brittle	WOLLASTONITE
32275963	31	Men's Bath Wall	1	Ceramic Tile	Gray, Hard	NON FIBROUS MATERIAL
32275963	31	Men's Bath Wall	2	Granular Material	Gray, Granular	NON FIBROUS MATERIAL
32275964	31A	Men's Bath Wall	1	Ceramic Tile	Gray, Hard	NON FIBROUS MATERIAL
32275964	31A	Men's Bath Wall	2	Granular Material	Gray, Granular	NON FIBROUS MATERIAL
32275965	32	Men's Bath Wall	1	Ceramic Tile	Gray, Hard	NON FIBROUS MATERIAL
32275965	32	Men's Bath Wall	2	Granular Material	Gray, Granular	NON FIBROUS MATERIAL
32275966	33	Men's Bath Floor	1	Ceramic Tile	Gray, Hard	NON FIBROUS MATERIAL
32275966	33	Men's Bath Floor	2	Grout	Black, Granular	NON FIBROUS MATERIAL
32275966	33	Men's Bath Floor	3	Granular Material	Gray, Granular	NON FIBROUS MATERIAL

CHEVY BUILDING – ASBESTOS NEGATIVE MATERIALS						
LAB #	KELLCO #	LOCATION	LAYER	MATERIAL	DESCRIPTION	NON-ACM
32275967	34	Men's Bath Floor	1	Ceramic Tile	Gray, Hard	NON FIBROUS MATERIAL
32275967	34	Men's Bath Floor	2	Grout	Black, Granular	NON FIBROUS MATERIAL
32275967	34	Men's Bath Floor	3	Granular Material	Gray, Granular	NON FIBROUS MATERIAL
32275968	35	Men's Bath Floor	1	Ceramic Tile	Gray, Hard	NON FIBROUS MATERIAL
32275968	35	Men's Bath Floor	2	Grout	Black, Granular	NON FIBROUS MATERIAL
32275968	35	Men's Bath Floor	3	Granular Material	Gray, Granular	NON FIBROUS MATERIAL
32275969	36	Hall By Men's	1	Sheet Flooring	Dark Green, Organically Bound	NON FIBROUS MATERIAL
32275969	36	Hall By Men's	2	Mastic	Yellow, Soft	CELLULOSE FIBER
32275969	36	Hall By Men's	2	Mastic	Yellow, Soft	NON FIBROUS MATERIAL
32275970	37	Hall By Men's	1	Baseboard	Black, Rubbery	NON FIBROUS MATERIAL
32275970	37	Hall By Men's	2	Baseboard Mastic	Tan, Soft	NON FIBROUS MATERIAL
32275970	37	Hall By Men's	2	Baseboard Mastic	Tan, Soft	CELLULOSE FIBER
32275971	38	Men's Bath	1	Mastic	Yellow, Soft	CELLULOSE FIBER
32275971	38	Men's Bath	1	Mastic	Yellow, Soft	NON FIBROUS MATERIAL
32275972	39	Men's Bath	1	Mastic	Yellow, Soft	NON FIBROUS MATERIAL
32275972	39	Men's Bath	1	Mastic	Yellow, Soft	CELLULOSE FIBER
32275973	40	Men's Bath	1	Mastic	Yellow, Soft	NON FIBROUS MATERIAL
32275973	40	Men's Bath	1	Mastic	Yellow, Soft	CELLULOSE FIBER
32275974	41	Center Office Front	1	Baseboard	Black, Rubbery	NON FIBROUS MATERIAL

CHEVY BUILDING – ASBESTOS NEGATIVE MATERIALS						
LAB #	KELLCO #	LOCATION	LAYER	MATERIAL	DESCRIPTION	NON-ACM
32275974	41	Center Office Front	2	Baseboard Mastic	Tan, Soft	NON FIBROUS MATERIAL
32275974	41	Center Office Front	2	Baseboard Mastic	Tan, Soft	CELLULOSE FIBER
32275975	42	Center Office Front	1	Sheet Flooring	Dark Green, Organically Bound	NON FIBROUS MATERIAL
32275975	42	Center Office Front	2	Mastic	Yellow, Soft	CELLULOSE FIBER
32275975	42	Center Office Front	2	Mastic	Yellow, Soft	NON FIBROUS MATERIAL
32275976	43	Show Room E	1	Flooring	Tan, Hard	NON FIBROUS MATERIAL
32275977	44	Show Room W	1	Flooring	Tan, Hard	NON FIBROUS MATERIAL
32275978	45	Show Room W	1	Mastic	Yellow, Brittle	NON FIBROUS MATERIAL
32275979	46	Show Room NW	1	Mastic	Yellow, Brittle	NON FIBROUS MATERIAL
32275979	46	Show Room NW	2	Leveling Compound	White, Granular	NON FIBROUS MATERIAL
32275980	47	Show Room NW	1	Mastic	Yellow, Brittle	NON FIBROUS MATERIAL
32275980	47	Show Room NW	2	Leveling Compound	White, Granular	NON FIBROUS MATERIAL
32275981	48	Show Room NW	1	Mastic	Yellow, Brittle	NON FIBROUS MATERIAL
32275981	48	Show Room NW	2	Leveling Compound	White, Granular	NON FIBROUS MATERIAL
32275984	51	Men's Bath	1	Mastic	Yellow, Soft	NON FIBROUS MATERIAL
32275984	51	Men's Bath	1	Mastic	Yellow, Soft	CELLULOSE FIBER
32275985	52	S At Stairs	1	Granular Material	White, Granular	NON FIBROUS MATERIAL
32275986	53	E Wall	1	Granular Material	White, Granular	NON FIBROUS MATERIAL
32275987	54	SE Office	1	Granular Material	White, Granular	NON FIBROUS MATERIAL

CHEVY BUILDING – ASBESTOS NEGATIVE MATERIALS						
LAB #	KELLCO #	LOCATION	LAYER	MATERIAL	DESCRIPTION	NON-ACM
32275988	55	SE Office	1	Mastic	Yellow, Soft	NON FIBROUS MATERIAL
32275988	55	SE Office	2	Floor Tile	Off White, Organically Bound	NON FIBROUS MATERIAL
32275988	55	SE Office	3	Mastic	Black, Bituminous	NON FIBROUS MATERIAL
32275988	55	SE Office	3	Mastic	Black, Bituminous	CELLULOSE FIBER
32275989	56	By Reception	1	Mastic	Yellow, Soft	NON FIBROUS MATERIAL
32275989	56	By Reception	1	Mastic	Yellow, Soft	CELLULOSE FIBER
32275989	56	By Reception	2	Floor Tile	Off White, Organically Bound	NON FIBROUS MATERIAL
32275989	56	By Reception	3	Mastic	Black, Bituminous	NON FIBROUS MATERIAL
32275989	56	By Reception	3	Mastic	Black, Bituminous	CELLULOSE FIBER
32275990	57	Large E Room	1	Mastic	Yellow, Soft	NON FIBROUS MATERIAL
32275990	57	Large E Room	2	Floor Tile	Off White, Organically Bound	NON FIBROUS MATERIAL
32275990	57	Large E Room	3	Mastic	Black, Bituminous	NON FIBROUS MATERIAL
32275990	57	Large E Room	3	Mastic	Black, Bituminous	CELLULOSE FIBER
32275991	58	S Center Office	1	Concrete	Gray, Hard	NON FIBROUS MATERIAL
32275991	58	S Center Office	2	Mastic	Yellow, Soft	CELLULOSE FIBER
32275991	58	S Center Office	2	Mastic	Yellow, Soft	NON FIBROUS MATERIAL
32275992	59	S Center Office	1	Concrete	Gray, Hard	NON FIBROUS MATERIAL
32275992	59	S Center Office	2	Mastic	Yellow, Soft	NON FIBROUS MATERIAL
32275992	59	S Center Office	2	Mastic	Yellow, Soft	CELLULOSE FIBER

CHEVY BUILDING – ASBESTOS NEGATIVE MATERIALS						
LAB #	KELLCO #	LOCATION	LAYER	MATERIAL	DESCRIPTION	NON-ACM
32275998	65	Hall By Reception	1	Wall Texture	White, Granular	NON FIBROUS MATERIAL
32275998	65	Hall By Reception	2	Powdery Material	White, Powdery	CELLULOSE FIBER
32275998	65	Hall By Reception	2	Powdery Material	White, Powdery	NON FIBROUS MATERIAL
32275999	66	W Front Hall	1	Wall Texture	White, Granular	NON FIBROUS MATERIAL
32275999	66	W Front Hall	2	Powdery Material	White, Powdery	NON FIBROUS MATERIAL
32275999	66	W Front Hall	2	Powdery Material	White, Powdery	CELLULOSE FIBER
32276000	67	Hall By Bath	1	Wall Texture	White, Granular	NON FIBROUS MATERIAL
32276000	67	Hall By Bath	2	Powdery Material	Brown, Powdery	NON FIBROUS MATERIAL
32276000	67	Hall By Bath	2	Powdery Material	Brown, Powdery	CELLULOSE FIBER
32276001	68	S Side Room	1	Wall Texture	White, Granular	NON FIBROUS MATERIAL
32276001	68	S Side Room	2	Powdery Material	White, Powdery	CELLULOSE FIBER
32276001	68	S Side Room	2	Powdery Material	White, Powdery	NON FIBROUS MATERIAL
32276002	69	Hall By S Entry Door	1	Wall Texture	White, Granular	NON FIBROUS MATERIAL
32276002	69	Hall By S Entry Door	2	Powdery Material	White, Powdery	CELLULOSE FIBER
32276002	69	Hall By S Entry Door	2	Powdery Material	White, Powdery	NON FIBROUS MATERIAL
32276003	70	NW Room Small	1	Wall Texture Rough Lines	White, Granular	NON FIBROUS MATERIAL
32276003	70	NW Room Small	2	Powdery Material	White, Powdery	NON FIBROUS MATERIAL
32276003	70	NW Room Small	2	Powdery Material	White, Powdery	CELLULOSE FIBER
32276004	71	Small Room By W Hall	1	Wall Texture Rough	White, Granular	NON FIBROUS MATERIAL

CHEVY BUILDING – ASBESTOS NEGATIVE MATERIALS						
LAB #	KELLCO #	LOCATION	LAYER	MATERIAL	DESCRIPTION	NON-ACM
32276004	71	Small Room By W Hall	2	Powdery Material	White, Powdery	CELLULOSE FIBER
32276004	71	Small Room By W Hall	2	Powdery Material	White, Powdery	NON FIBROUS MATERIAL
32276005	72	SW Large Room	1	Wall Texture Rough	White, Granular	NON FIBROUS MATERIAL
32276005	72	SW Large Room	2	Powdery Material	White, Powdery	CELLULOSE FIBER
32276005	72	SW Large Room	2	Powdery Material	White, Powdery	NON FIBROUS MATERIAL
32276006	73	SW Large Room	1	Wall Texture Rough	White, Granular	NON FIBROUS MATERIAL
32276007	74	Reception	1	Wall Texture Rough Lines	White, Granular	NON FIBROUS MATERIAL
32276007	74	Reception	2	Powdery Material	White, Powdery	CELLULOSE FIBER
32276007	74	Reception	2	Powdery Material	White, Powdery	NON FIBROUS MATERIAL
32276008	75	SW Large Room	1	Wall Texture Rough	White, Granular	NON FIBROUS MATERIAL
32276008	75	SW Large Room	2	Powdery Material	White, Powdery	CELLULOSE FIBER
32276008	75	SW Large Room	2	Powdery Material	White, Powdery	NON FIBROUS MATERIAL
32276009	76	Front NW Small Room	1	Wall Texture Rough Lines	White, Granular	NON FIBROUS MATERIAL
32276009	76	Front NW Small Room	2	Powdery Material	White, Powdery	NON FIBROUS MATERIAL
32276009	76	Front NW Small Room	2	Powdery Material	White, Powdery	CELLULOSE FIBER
32276010	77	SW Large Room	1	Wall Texture Rough	White, Granular	NON FIBROUS MATERIAL
32276010	77	SW Large Room	2	Granular Material	Off White, Granular	CELLULOSE FIBER
32276010	77	SW Large Room	2	Granular Material	Off White, Granular	NON FIBROUS MATERIAL
32276011	78	Janitor Closet S	1	Wallboard	White, Powdery	CELLULOSE FIBER

CHEVY BUILDING – ASBESTOS NEGATIVE MATERIALS						
LAB #	KELLCO #	LOCATION	LAYER	MATERIAL	DESCRIPTION	NON-ACM
32276011	78	Janitor Closet S	1	Wallboard	White, Powdery	NON FIBROUS MATERIAL
32276011	78	Janitor Closet S	2	Joint Compound	White, Granular	NON FIBROUS MATERIAL
32276012	79	Women's Bath	1	Wallboard	White, Powdery	NON FIBROUS MATERIAL
32276012	79	Women's Bath	1	Wallboard	White, Powdery	CELLULOSE FIBER
32276012	79	Women's Bath	2	Joint Compound	White, Granular	NON FIBROUS MATERIAL
32276013	80	Center Hall By Photos	1	Wallboard	White, Powdery	CELLULOSE FIBER
32276013	80	Center Hall By Photos	1	Wallboard	White, Powdery	NON FIBROUS MATERIAL
32276013	80	Center Hall By Photos	2	Joint Compound	White, Granular	NON FIBROUS MATERIAL
32276014	81	Storage Room Center	1	Wallboard	White, Powdery	NON FIBROUS MATERIAL
32276014	81	Storage Room Center	1	Wallboard	White, Powdery	CELLULOSE FIBER
32276014	81	Storage Room Center	2	Joint Compound	White, Granular	NON FIBROUS MATERIAL
32276015	82	Above Ceiling At Hatch	1	Wallboard	White, Powdery	NON FIBROUS MATERIAL
32276015	82	Above Ceiling At Hatch	1	Wallboard	White, Powdery	CELLULOSE FIBER
32276015	82	Above Ceiling At Hatch	2	Joint Compound	White, Granular	NON FIBROUS MATERIAL

CADILLAC BUILDING – ASBESTOS NEGATIVE MATERIALS						
LAB #	KELLCO #	LOCATION	LAYER	MATERIAL	DESCRIPTION	NON-ACM
32276021	1	NE Corner Ext	1	Stucco	White/Gray, Hard	NON FIBROUS MATERIAL
32276022	2	N Ext	1	Stucco	White/Gray, Hard	NON FIBROUS MATERIAL
32276023	4	E Side	1	Asphalt Material	Black, Hard	NON FIBROUS MATERIAL

CADILLAC BUILDING – ASBESTOS NEGATIVE MATERIALS						
LAB #	KELLCO #	LOCATION	LAYER	MATERIAL	DESCRIPTION	NON-ACM
32276024	5	NW Ext	1	Asphalt Material	Light Beige, Hard	NON FIBROUS MATERIAL
32276025	6	N Ext	1	Ceramic Tile	Green, Hard	NON FIBROUS MATERIAL
32276025	6	N Ext	2	Grout	Gray, Hard	NON FIBROUS MATERIAL
32276026	7	W Ext	1	Asphalt Material	Black, Hard	NON FIBROUS MATERIAL
32276027	8	W Ext	1	Concrete	White, Hard	NON FIBROUS MATERIAL
32276028	9	Roof S	1	Mastic	White, Soft	NON FIBROUS MATERIAL
32276029	10	Roof Center	1	Mastic	Gray, Soft	NON FIBROUS MATERIAL
32276030	11	Roof SW	1	Mastic	White, Soft	NON FIBROUS MATERIAL
32276031	12	E Area	1	Wall Texture	White, Granular	NON FIBROUS MATERIAL
32276032	13	NW Office	1	Wall Texture	White, Granular	NON FIBROUS MATERIAL
32276033	14	NE Office	1	Wall Texture	White, Granular	NON FIBROUS MATERIAL
32276034	15	SE Office	1	Wall Texture	White, Granular	NON FIBROUS MATERIAL
32276035	16	E Office	1	Wall Texture	White, Granular	NON FIBROUS MATERIAL
32276036	17	Above Ceiling S	1	Wallboard	White, Powdery	NON FIBROUS MATERIAL
32276036	17	Above Ceiling S	1	Wallboard	White, Powdery	CELLULOSE FIBER
32276036	17	Above Ceiling S	2	Joint Compound	White, Granular	NON FIBROUS MATERIAL
32276037	18	SE Office	1	Wallboard	White, Powdery	NON FIBROUS MATERIAL
32276037	18	SE Office	1	Wallboard	White, Powdery	CELLULOSE FIBER
32276037	18	SE Office	2	Joint Compound	White, Granular	NON FIBROUS MATERIAL
32276038	19	Center	1	Wallboard	White, Powdery	CELLULOSE FIBER
32276038	19	Center	1	Wallboard	White, Powdery	NON FIBROUS MATERIAL

CADILLAC BUILDING – ASBESTOS NEGATIVE MATERIALS						
LAB #	KELLCO #	LOCATION	LAYER	MATERIAL	DESCRIPTION	NON-ACM
32276038	19	Center	2	Joint Compound	White, Granular	NON FIBROUS MATERIAL
32276039	20	SE Office	1	Ceiling Tile	White, Fibrous	CELLULOSE FIBER
32276039	20	SE Office	1	Ceiling Tile	White, Fibrous	MINERAL/GLASS WOOL
32276039	20	SE Office	1	Ceiling Tile	White, Fibrous	NON FIBROUS MATERIAL
32276040	21	Front	1	Ceiling Tile	White, Fibrous	NON FIBROUS MATERIAL
32276040	21	Front	1	Ceiling Tile	White, Fibrous	MINERAL/GLASS WOOL
32276040	21	Front	1	Ceiling Tile	White, Fibrous	CELLULOSE FIBER
32276041	22	Sales Floor	1	Ceiling Tile	White, Fibrous	MINERAL/GLASS WOOL
32276041	22	Sales Floor	1	Ceiling Tile	White, Fibrous	CELLULOSE FIBER
32276041	22	Sales Floor	1	Ceiling Tile	White, Fibrous	NON FIBROUS MATERIAL
32276042	23	Center S Glass Partition	1	Grout	White, Hard	NON FIBROUS MATERIAL
32276043	24	Center S Glass Partition	1	Grout	White, Hard	NON FIBROUS MATERIAL
32276044	25	Center S Glass Partition	1	Grout	White, Hard	NON FIBROUS MATERIAL
32276045	26	SE Area	1	Ceramic Tile	Green, Hard	NON FIBROUS MATERIAL
32276045	26	SE Area	2	Grout	Gray, Hard	NON FIBROUS MATERIAL
32276045	26	SE Area	3	Hard Material	Beige, Hard	NON FIBROUS MATERIAL
32276046	27	E	1	Ceramic Tile	Green, Hard	NON FIBROUS MATERIAL
32276046	27	E	2	Grout	Gray, Hard	NON FIBROUS MATERIAL
32276046	27	E	3	Hard Material	Beige, Hard	NON FIBROUS MATERIAL
32276047	28	E Office	1	Baseboard	Brown, Rubbery	NON FIBROUS MATERIAL
32276047	28	E Office	2	Mastic	Tan, Soft	NON FIBROUS MATERIAL

CADILLAC BUILDING – ASBESTOS NEGATIVE MATERIALS						
LAB #	KELLCO #	LOCATION	LAYER	MATERIAL	DESCRIPTION	NON-ACM
32276048	29	W Office	1	Baseboard	Brown, Rubbery	NON FIBROUS MATERIAL
32276048	29	W Office	2	Mastic	Tan, Soft	NON FIBROUS MATERIAL
32276049	30	W Office	1	Mastic	Yellow, Soft	NON FIBROUS MATERIAL
32276050	31	NW Office	1	Baseboard	Brown, Rubbery	NON FIBROUS MATERIAL
32276050	31	NW Office	2	Mastic	Tan, Soft	NON FIBROUS MATERIAL
32276051	32	NW Office	1	Mastic	Yellow, Soft	NON FIBROUS MATERIAL
32276052	33	E Office	1	Mastic	Yellow, Soft	NON FIBROUS MATERIAL
32276053	34	Men's Bath	1	Ceramic Tile	White/Green, Hard	NON FIBROUS MATERIAL
32276053	34	Men's Bath	2	Grout	White, Hard	NON FIBROUS MATERIAL
32276053	34	Men's Bath	3	Hard Material	Gray, Hard	NON FIBROUS MATERIAL
32276054	35	Men's Bath	1	Ceramic Tile	White/Green, Hard	NON FIBROUS MATERIAL
32276054	35	Men's Bath	2	Grout	White, Hard	NON FIBROUS MATERIAL
32276054	35	Men's Bath	3	Hard Material	Gray, Hard	NON FIBROUS MATERIAL
32276055	36	Women's Bath	1	Ceramic Tile	White/Green, Hard	NON FIBROUS MATERIAL
32276055	36	Women's Bath	2	Grout	White, Hard	NON FIBROUS MATERIAL
32276055	36	Women's Bath	3	Hard Material	Gray, Hard	NON FIBROUS MATERIAL
32276056	37	Men's Bath	1	Ceramic Tile	Gray, Hard	NON FIBROUS MATERIAL
32276056	37	Men's Bath	2	Grout	Gray, Hard	NON FIBROUS MATERIAL
32276056	37	Men's Bath	3	Mastic	Tan, Brittle	NON FIBROUS MATERIAL

CADILLAC BUILDING – ASBESTOS NEGATIVE MATERIALS						
LAB #	KELLCO #	LOCATION	LAYER	MATERIAL	DESCRIPTION	NON-ACM
32276057	38	Men's Bath	1	Ceramic Tile	Gray, Hard	NON FIBROUS MATERIAL
32276057	38	Men's Bath	2	Grout	Gray, Hard	NON FIBROUS MATERIAL
32276057	38	Men's Bath	3	Mastic	Tan, Brittle	NON FIBROUS MATERIAL
32276058	39	Women's Bath	1	Ceramic Tile	Gray, Hard	NON FIBROUS MATERIAL
32276058	39	Women's Bath	2	Grout	Gray, Hard	NON FIBROUS MATERIAL
32276058	39	Women's Bath	3	Mastic	Tan, Brittle	NON FIBROUS MATERIAL
32276059	40	N Floor	1	Stone Floor	Gray, Hard	NON FIBROUS MATERIAL
32276060	41	Floor E	1	Stone Floor	Gray, Hard	NON FIBROUS MATERIAL
32276061	42	Floor N	1	Stone Floor	Gray, Hard	NON FIBROUS MATERIAL

SERVICE SHOP – ASBESTOS NEGATIVE MATERIALS						
LAB #	KELLCO #	LOCATION	LAYER	MATERIAL	DESCRIPTION	NON-ACM
32276093	1	Office West Wall	1	Wall Texture	White, Granular	NON FIBROUS MATERIAL
32276094	2	Office West Wall	1	Wall Texture	White, Granular	NON FIBROUS MATERIAL
32276095	3	Office North Side	1	Wall Texture	White, Granular	NON FIBROUS MATERIAL
32276096	4	Office East Side	1	Wall Texture	White, Granular	NON FIBROUS MATERIAL
32276097	5	Office West Side	1	Wall Texture	White, Granular	NON FIBROUS MATERIAL
32276098	6	Office West Side	1	Wallboard	White, Powdery	CELLULOSE FIBER
32276098	6	Office West Side	1	Wallboard	White, Powdery	NON FIBROUS MATERIAL
32276098	6	Office West Side	2	Tape	Beige, Fibrous	NON FIBROUS MATERIAL

SERVICE SHOP – ASBESTOS NEGATIVE MATERIALS						
LAB #	KELLCO #	LOCATION	LAYER	MATERIAL	DESCRIPTION	NON-ACM
32276098	6	Office West Side	2	Tape	Beige, Fibrous	CELLULOSE FIBER
32276098	6	Office West Side	3	Joint Compound	White, Granular	NON FIBROUS MATERIAL
32276099	7	Office Center	1	Wallboard	White, Powdery	NON FIBROUS MATERIAL
32276099	7	Office Center	1	Wallboard	White, Powdery	CELLULOSE FIBER
32276099	7	Office Center	2	Tape	Beige, Fibrous	NON FIBROUS MATERIAL
32276099	7	Office Center	2	Tape	Beige, Fibrous	CELLULOSE FIBER
32276099	7	Office Center	3	Joint Compound	White, Granular	NON FIBROUS MATERIAL
32276100	8	Office Rear	1	Wallboard	White, Powdery	CELLULOSE FIBER
32276100	8	Office Rear	1	Wallboard	White, Powdery	NON FIBROUS MATERIAL
32276100	8	Office Rear	2	Tape	Beige, Fibrous	CELLULOSE FIBER
32276100	8	Office Rear	2	Tape	Beige, Fibrous	NON FIBROUS MATERIAL
32276100	8	Office Rear	3	Joint Compound	White, Granular	NON FIBROUS MATERIAL
32276101	9	Office Center	1	Floor Tile	Gray, Organically Bound	NON FIBROUS MATERIAL
32276101	9	Office Center	2	Mastic	Yellow, Soft	NON FIBROUS MATERIAL
32276101	9	Office Center	3	Floor Tile	White, Organically Bound	NON FIBROUS MATERIAL
32276101	9	Office Center	4	Mastic	Yellow, Soft	NON FIBROUS MATERIAL
32276102	10	Office Rear	1	Baseboard Mastic	Tan, Soft	NON FIBROUS MATERIAL
32276103	11	Office Front	1	Baseboard Mastic	Beige, Soft	NON FIBROUS MATERIAL
32276104	12	Office Manager Office	1	Mastic	Yellow, Soft	NON FIBROUS MATERIAL

SERVICE SHOP – ASBESTOS NEGATIVE MATERIALS						
LAB #	KELLCO #	LOCATION	LAYER	MATERIAL	DESCRIPTION	NON-ACM
32276104	12	Office Manager Office	1	Mastic	Yellow, Soft	SYNTHETIC FIBER
32276104	12	Office Manager Office	2	Floor Tile	Gray, Organically Bound	NON FIBROUS MATERIAL
32276104	12	Office Manager Office	3	Mastic	Beige, Soft	NON FIBROUS MATERIAL
32276105	13	Office Rear	1	Baseboard Mastic	Tan, Soft	NON FIBROUS MATERIAL
32276105	13	Office Rear	1	Baseboard Mastic	Tan, Soft	CELLULOSE FIBER
32276105	13	Office Rear	2	Baseboard Mastic	Yellow, Soft	NON FIBROUS MATERIAL
32276106	14	Office Center	1	Floor Tile	White, Organically Bound	NON FIBROUS MATERIAL
32276106	14	Office Center	2	Mastic	Yellow, Soft	NON FIBROUS MATERIAL
32276106	14	Office Center	3	Floor Tile	Gray, Organically Bound	NON FIBROUS MATERIAL
32276106	14	Office Center	4	Mastic	Yellow, Soft	NON FIBROUS MATERIAL
32276107	15	Office Center	1	Carpet Mastic	Yellow, Soft	NON FIBROUS MATERIAL
32276107	15	Office Center	1	Carpet Mastic	Yellow, Soft	SYNTHETIC FIBER
32276108	16	Office Center	1	Carpet Mastic	Yellow, Soft	SYNTHETIC FIBER
32276108	16	Office Center	1	Carpet Mastic	Yellow, Soft	NON FIBROUS MATERIAL
32276109	17	Office Small	1	Floor Tile	Black, Organically Bound	NON FIBROUS MATERIAL
32276109	17	Office Small	2	Mastic	Beige, Soft	NON FIBROUS MATERIAL
32276109	17	Office Small	3	Leveling Compound	White, Granular	NON FIBROUS MATERIAL
32276110	18	Office Small	1	Floor Tile	Black, Organically Bound	NON FIBROUS MATERIAL

SERVICE SHOP – ASBESTOS NEGATIVE MATERIALS						
LAB #	KELLCO #	LOCATION	LAYER	MATERIAL	DESCRIPTION	NON-ACM
32276110	18	Office Small	2	Mastic	Beige, Soft	NON FIBROUS MATERIAL
32276110	18	Office Small	3	Leveling Compound	White, Granular	NON FIBROUS MATERIAL
32276111	19	Office Small	1	Floor Tile	Black, Organically Bound	NON FIBROUS MATERIAL
32276111	19	Office Small	2	Mastic	Beige, Soft	NON FIBROUS MATERIAL
32276111	19	Office Small	3	Leveling Compound	White, Granular	NON FIBROUS MATERIAL
32276112	20	Office Center	1	Ceiling Tile	White/Gray, Fibrous	FOAMED GLASS
32276112	20	Office Center	1	Ceiling Tile	White/Gray, Fibrous	CELLULOSE FIBER
32276112	20	Office Center	1	Ceiling Tile	White/Gray, Fibrous	NON FIBROUS MATERIAL
32276112	20	Office Center	1	Ceiling Tile	White/Gray, Fibrous	MINERAL/GLASS WOOL
32276113	21	Office Rear	1	Ceiling Tile	White/Gray, Fibrous	MINERAL/GLASS WOOL
32276113	21	Office Rear	1	Ceiling Tile	White/Gray, Fibrous	FOAMED GLASS
32276113	21	Office Rear	1	Ceiling Tile	White/Gray, Fibrous	NON FIBROUS MATERIAL
32276113	21	Office Rear	1	Ceiling Tile	White/Gray, Fibrous	CELLULOSE FIBER
32276114	22	Office Front	1	Ceiling Tile	White/Gray, Fibrous	MINERAL/GLASS WOOL
32276114	22	Office Front	1	Ceiling Tile	White/Gray, Fibrous	NON FIBROUS MATERIAL
32276114	22	Office Front	1	Ceiling Tile	White/Gray, Fibrous	CELLULOSE FIBER
32276114	22	Office Front	1	Ceiling Tile	White/Gray, Fibrous	FOAMED GLASS
32276115	23	Exterior North Wall	1	Stucco	Gray, Hard	NON FIBROUS MATERIAL
32276116	24	Exterior West Wall	1	Stucco	Gray, Hard	NON FIBROUS MATERIAL
32276117	25	Exterior SW Corner	1	Stucco	Gray, Hard	NON FIBROUS MATERIAL

SERVICE SHOP – ASBESTOS NEGATIVE MATERIALS						
LAB #	KELLCO #	LOCATION	LAYER	MATERIAL	DESCRIPTION	NON-ACM
32276118	26	Shop Partition Wall	1	Wallboard	White, Powdery	CELLULOSE FIBER
32276118	26	Shop Partition Wall	1	Wallboard	White, Powdery	NON FIBROUS MATERIAL
32276118	26	Shop Partition Wall	2	Joint Compound	White, Granular	NON FIBROUS MATERIAL
32276119	27	Shop East End	1	Cinder Block	Gray, Hard	NON FIBROUS MATERIAL
32276120	28	Shop East End	1	Cinder Block	Gray, Hard	NON FIBROUS MATERIAL
32276121	29	Shop East End	1	Cinder Block	Gray, Hard	NON FIBROUS MATERIAL
32276121	29	Shop East End	1	Hard Material	Gray, Hard	SYNTHETIC FIBER
32276122	30	Shop Center	1	Concrete	Gray/Beige, Hard	NON FIBROUS MATERIAL
32276123	31	Shop Center East	1	Concrete	Gray/Beige, Hard	NON FIBROUS MATERIAL
32276124	32	Shop East	1	Concrete	Gray/Beige, Hard	NON FIBROUS MATERIAL
32276125	33	Roof SW Vent	1	Mastic	Black, Bituminous	CELLULOSE FIBER
32276125	33	Roof SW Vent	1	Mastic	Black, Bituminous	NON FIBROUS MATERIAL
32276126	34	Roof North	1	Mastic	White, Soft	NON FIBROUS MATERIAL
32276127	35	Roof Center	1	Mastic	Black, Bituminous	NON FIBROUS MATERIAL
32276127	35	Roof Center	1	Mastic	Black, Bituminous	CELLULOSE FIBER
32276128	36	Roof West	1	Mastic	Black, Soft	CELLULOSE FIBER
32276128	36	Roof West	1	Mastic	Black, Soft	NON FIBROUS MATERIAL
32276129	37	Roof For Shed South	1	Shingle	Beige/Black/Brown, Bituminous/Granular	MINERAL/GLASS WOOL

SERVICE SHOP – ASBESTOS NEGATIVE MATERIALS						
LAB #	KELCO #	LOCATION	LAYER	MATERIAL	DESCRIPTION	NON-ACM
32276129	37	Roof For Shed South	1	Shingle	Beige/Black/Brown, Bituminous/Granular	NON FIBROUS MATERIAL
32276129	37	Roof For Shed South	2	Underlayment	Black, Bituminous/Fibrous	CELLULOSE FIBER
32276129	37	Roof For Shed South	2	Underlayment	Black, Bituminous/Fibrous	NON FIBROUS MATERIAL
32276130	38	Roof For Shed South	1	Shingle	Beige/Black/Brown, Bituminous/Granular	NON FIBROUS MATERIAL
32276130	38	Roof For Shed South	1	Shingle	Beige/Black/Brown, Bituminous/Granular	MINERAL/GLASS WOOL
32276130	38	Roof For Shed South	2	Underlayment	Black, Bituminous/Fibrous	NON FIBROUS MATERIAL
32276130	38	Roof For Shed South	2	Underlayment	Black, Bituminous/Fibrous	CELLULOSE FIBER
32276131	39	Roof For Shed South	1	Shingle	Beige/Black/Brown, Bituminous/Granular	MINERAL/GLASS WOOL
32276131	39	Roof For Shed South	1	Shingle	Beige/Black/Brown, Bituminous/Granular	NON FIBROUS MATERIAL
32276131	39	Roof For Shed South	2	Underlayment	Black, Bituminous/Fibrous	CELLULOSE FIBER
32276131	39	Roof For Shed South	2	Underlayment	Black, Bituminous/Fibrous	NON FIBROUS MATERIAL

- Paint Findings

Lead samples were analyzed by Atomic Absorption in Schneider Laboratories Global. OSHA requires protection of workers from exposure to any lead. Paint should be considered as containing lead if it is the same color as any positive tested material, unless it has specifically been tested and shown to be none detected for lead.

The following materials tested positive for lead:

SERVICE SHOP – LEAD POSITIVE MATERIALS				
LAB#	KELLCO #	DESCRIPTION	LEAD %	LEAD PPM
32275912	1PC	Composite Interior	0.012	117

BODY SHOP – LEAD POSITIVE MATERIALS				
LAB#	KELLCO #	DESCRIPTION	LEAD %	LEAD PPM
32275924	7PC	Composite Exterior	0.011	106

SERVICE SHOP – LEAD POSITIVE MATERIALS				
LAB#	KELLCO #	DESCRIPTION	LEAD %	LEAD PPM
32275912	1PC	Composite Interior	0.012	117
32275926	5PC	Composite Interior	0.009	86
32275927	6PC	Composite Exterior	0.078	777

CADILLAC BUILDING – LEAD POSITIVE MATERIALS				
LAB#	KELLCO #	DESCRIPTION	LEAD %	LEAD PPM
32275928	3 PC	Composite Interior Various	0.003	32

Paint of the same color as the above samples should be considered positive unless proven otherwise by direct sampling with results of “None Detected.”

The following are materials for which the lead was none detected:

SERVICE SHOP – LEAD NEGATIVE MATERIALS				
LAB#	KELLCO #	DESCRIPTION	LEAD %	LEAD PPM
32275913	2PC	Composite Exterior	< 0.003	< 33

SERVICE ISLAND – LEAD NEGATIVE MATERIALS				
LAB#	KELLCO #	DESCRIPTION	LEAD %	LEAD PPM
32275922	9PC	Composite Exterior	< 0.003	< 33

BODY SHOP – LEAD NEGATIVE MATERIALS				
LAB#	KELLCO #	DESCRIPTION	LEAD %	LEAD PPM
32275925	8PC	Composite Interior	<0.003	<32

CADILLAC BUILDING – LEAD NEGATIVE MATERIALS				
LAB#	KELCO #	DESCRIPTION	LEAD %	LEAD PPM
32275929	4 PC	Composite Exterior Various	< 0.003	< 33

Although there are some materials that are negative for lead paint, for the purposes of demolition it is recommended that all painted materials be considered as lead containing.

- Other Hazardous Materials

Throughout the property there are cans of paint, oil, and other chemicals that have been left on the site. These should be handled appropriately

The building contains light fixtures with fluorescent bulbs and ballasts that may contain PCB's. These should be handled in accordance with regulations.

It is also anticipated that the fluorescent light tubes may contain mercury. If they are to be removed, they should be recycled properly

Thermostats were observed throughout the building to be of the mercury type.

PCB's were used to increase flexibility in many construction materials, such as sealants, mastics, window putty, etc. We recommend testing mastic and putty-like materials for PCB's.

Regulatory Requirements

The Environmental Protection Agency (EPA) defines Asbestos Containing Material as any material that contains greater than 1% asbestos. Materials containing greater than 1% asbestos must be removed prior to demolition or renovation if they will be disturbed.

Friable asbestos containing material is any material that can be crushed or pulverized by hand pressure when dry, or materials that can be rendered to a crumbled, pulverized, or powdered state when dry by crushing, sanding, sawing, shot blasting, or through demolition or renovation activities.

As stated by NESHAP regulations, any material that contains less than 10% asbestos using the visual estimation method can be point counted with gravimetric reduction. The Point Counting method is a much more accurate analytical method for determining the percent of asbestos in a particular material. If the Point Count method determines that the material contains less than 1% asbestos, the material being analyzed can be disposed of as non-hazardous asbestos containing construction waste.

Removal or disturbance of material with any detectable amount of asbestos must be handled in accordance with OSHA regulations. Cal-OSHA registration is required if the material contains more than .1% asbestos (1/10th of a percent). If there is more than 100 feet (linear or square) of an asbestos containing material that will be abated or disturbed, a California State registered and licensed asbestos abatement contractor must perform the work. If there is less than 100 feet, the work does not require a licensed asbestos abatement contractor, but must still conform to Cal-OSHA regulations.

Removal or disturbance of any amount of lead paint requires adherence to the Cal-OSHA and CDPH regulations, including proper training and certification for workers and supervisors

The OSHA lead (1532) regulations require that a Negative Initial Determination for lead exposure be made with paint that contains greater than 0.06% (600 ppm) of lead. Paint with less than 0.06% lead should still be treated within the OSHA guidelines, but with reasonable work practices should not generate OSHA action levels of lead exposure.

Building components with intact lead paint and no other hazardous materials can be disposed of as non-hazardous construction waste. Paint chips and debris must be disposed of as lead containing hazardous waste.

Comment Regarding All Asbestos Containing Materials:

Asbestos containing materials in good condition do not necessarily need to be removed unless they will be disturbed; they should however be respected.

Employees, contract workers and others should be advised not to drill, saw, scrape or otherwise disturb this material without taking precautionary measures appropriate to asbestos containing material.

Asbestos containing material should be removed prior to the renovation and must be removed prior to demolition.

Comment Regarding All Lead Containing Materials:

Lead is a known health hazard. Lead containing materials in good condition do not necessarily need to be removed if they are not disturbed; they should however be respected.

Painted surfaces that contain lead should be made known to contractors who may disturb them during their work. OSHA guidelines for workers in contact with lead paint apply if ANY detectable lead is found.

Anyone coming in contact with leaded paint should be advised not to disturb it without taking precautionary measures appropriate to avoid lead contamination or lead exposure.

Areas Needing Immediate Corrective Action

Asbestos (in any condition) and chipping and peeling lead paint should be removed prior to renovation and must be removed prior to demolition of the survey site.

Analytical Procedures

- **POLARIZED LIGHT MICROSCOPY (PLM)**

Bulk samples were analyzed in accordance with U.S. EPA "Test Method for Determination of Asbestos in Bulk Building Materials, 1993," with inclusion of area percent estimates of the sample components. The use of the McCrone Color Dispersion Staining Technique supplements the analysis when considered useful by the analyst. The samples are prepared with refractive immersion oil and are examined under Polarized Light Microscopy (PLM). The accuracy of the visual estimate method is 1%.

As per the standard "...The accuracy in the determination of the presence or absence of asbestos of greater than 1 area percent asbestos is greater than 99%." ASTM Committee D22.05, 1/18/88, Standard Method of Testing for Asbestos Containing Materials by Polarized Light Microscopy. If the sample matrix is reduced to minimize non-asbestos components, the detection limit can be mathematically enhanced, based on the amount of material remaining after matrix reduction. This method is called gravimetric reduction. This method involves ashing and chemical dissolution of the sample.

- **POINT COUNTING**

The Point Counting method is a much more accurate analytical method for determining the percent of asbestos in a particular material. The laboratory uses a muffle furnace to ash the sample and remove organic compounds. Hydrochloric acid is used to dissolve some of the non-asbestos minerals. Under this method a minimum of 125 points are counted from each of 8 different slide preparations of the same sample (total of 1000 points min.) If the Point Count Method determines that the material contains less than 1% asbestos, the material being analyzed can be treated as non-hazardous asbestos containing construction waste. Note: ONLY the Point Count Method can be used for this determination.

- **ATOMIC ABSORPTION FOR LEAD**

Paint samples were collected for atomic absorption (AA) analysis. The detection limit for each sample depends upon many factors including the sensitivity of the instrument and the sample size. In the laboratory utilizing flame AA, the detection limit is normally .01% or 100 parts per million (ppm).

KELLCO Qualifications

The KELLCO asbestos inspector is licensed with the State of California Department of Occupational Safety and Health (CAL-OSHA).

The KELLCO lead inspector is licensed by the California Department of Public Health (CDPH)

The following supporting documents are attached to this report:

- Laboratory analytical reports
- Photographs of sample locations

- Floor plan or sketch showing sample locations

Please call KELLCO if there are any questions and/or clarifications regarding this report. We look forward to working with you in the future.

Sincerely,

KELLCO Services, Inc.



Tim C. Cannard CAC #94-1395, CDPH Lead #764
Senior Project Manager

Asbestos Definitions and Classifications

ACM	(Asbestos Containing Material) – Commercial asbestos product containing more than 1% asbestos. ACM must be disposed as hazardous waste. Note: Federal OSHA and Cal-OSHA control materials containing any amount of asbestos.
ACBM	(Asbestos Containing Building Material) – AHERA/ASHARA term for material containing more than 1% asbestos in or on interior structural members or other structural components. Includes covered walkways, porticos and exterior HVAC TSI.
ACCM	(Asbestos Containing Construction Material) – California term for a manufactured construction material containing greater than .1% (one tenth of one percent) asbestos.
PACM	(Presumed Asbestos Containing Material) OSHA considers all TSI and surfacing materials installed prior to 1980 to be ACM unless proven otherwise.
Friable	Asbestos Containing Material that can be crumbled pulverized or reduced to powder by hand pressure when dry.
NOA	Naturally Occurring Asbestos. CARB defines as having >.25% by point counting.
Acm	CARB term for naturally occurring asbestos >.25% by point counting
DACM	Designated Asbestos Containing Material: Floortile installed before 1981

Categories of Asbestos Used BY EPA AHERA/ASHARA and OSHA/Cal-OSHA

TSI	(Thermal System Insulation) - “Thermal system insulation (TSI)” means ACM applied to pipes, fittings, boilers, breeching, tanks, ducts or other structural components to prevent heat loss or gain. “Thermal system insulation ACM” is thermal system insulation which contains more than 1% asbestos.
SURFACING (usually mixed on site at time of application)	“Surfacing material” means material that is sprayed, troweled-on or otherwise applied to surfaces (such as acoustical plaster on ceilings and fireproofing materials on structural members, or other materials on surfaces for acoustical, fireproofing, and other purposes). “Surfacing ACM” means surfacing material which contains more than 1% asbestos. NOTE: OSHA/Cal-OSHA do not classify skim coat, taping mud, floor tile mastic, stucco, leveling compound, and hard wall plasters or wall texturing as surfacing.
MISC.	All other ACM, including classify taping mud, floor tile mastic, stucco, leveling compound, and hard wall plasters or wall texturing as surfacing.

NESHAPS Categories for Asbestos (used by Air Quality Management Districts for Renovation and Demolition)

Category I	Cat I Non-friable Asbestos Containing Material (ACM) refers to asbestos containing packing, gaskets, resilient floor covering, Galbestos, and asphalt roofing products containing more than 1% asbestos.
Category II	Cat II Non-friable Asbestos-Containing Material (ACM) is any material that is not Cat I that contains greater than 1% asbestos.
RACM	“Regulated Asbestos-Containing Material.” – Friable manufactured asbestos material (ACM) or a Category I non-friable ACM that has become friable OR a Category I non-friable ACM that will be or has been subjected to sanding, grinding, cutting or abrading OR Category II non-friable ACM that has a high probability of becoming or has become crumbled, pulverized, or reduced to powder by the forces expected to act on the material in the course of demolition or renovation operations. RACM should be removed prior to renovation or demolition.

Characterization of Asbestos Containing Materials

Material	Estimated Quantity	TSI	Surfacing	Misc	RACM	Cat I	Cat II
<u>Body Shop</u>							
• Roof Mastic	25 SF			X		X	
• White Multiple Layers of Floor Tile & Mastic	700 SF			X		X	
• Drywall Tape Joint Compound	4,900 SF			X	X		
<u>Chevy Building</u>							
• Vinyl Sheet Flooring – White	50 SF			X		X	
• Acoustical Ceiling Spray	3,500 SF			X	X		
• Rough Wall Texture	1,500 SF			X	X		
<u>Service Island (Not Accessible) Assumed ACM Material:</u>							
• Drywall Texture & Joint Compound	950 SF			X	X		
• Floor Matting Mastic	700 SF			X		X	
• Red Ceramic Tile Grout	100 SF			X			X

SCHNEIDER LABORATORIES GLOBAL

INCORPORATED

2512 W. Cary Street • Richmond, Virginia • 23220-5117
804-353-6778 • 800-785-LABS (5227) • (FAX) 804-359-1475

Over 25 Years of Excellence in Service and Technology

LABORATORY ANALYSIS REPORT

Asbestos Identification by EPA Method¹ 600/R-93/116; EPA 600/M4-82-020

ACCOUNT #: 193-14-2646
CUSTOMER: KELLCO SERVICES INC
ADDRESS: 3137 DIABLO AVENUE
HAYWARD, CA 94545-2701

DATE COLLECTED: 7/31/2014
DATE RECEIVED: 8/5/2014
DATE ANALYZED: 8/5/2014
DATE REPORTED: 8/5/2014

PROJECT NAME: Service Shop
JOB LOCATION: 7544 Dublin Blvd
PROJECT NO.: 1407-16
PO NO.:

SampleType: Bulk

Customer Sample No.	SLI Sample/ Layer ID	Sample Identification/ Layer Name	PLM Analysis Results	
			Asbestos Fibers	Other Materials
1	32276093	Office West Wall		
Layer 1:	Wall Texture White, Granular		None Detected	100% NON FIBROUS MATERIAL
2	32276094	Office West Wall		
Layer 1:	Wall Texture White, Granular		None Detected	100% NON FIBROUS MATERIAL
3	32276095	Office North Side		
Layer 1:	Wall Texture White, Granular		None Detected	100% NON FIBROUS MATERIAL
4	32276096	Office East Side		
Layer 1:	Wall Texture White, Granular		None Detected	100% NON FIBROUS MATERIAL
5	32276097	Office West Side		
Layer 1:	Wall Texture White, Granular		None Detected	100% NON FIBROUS MATERIAL

Total Number of Pages in Report: 7

Results relate only to samples as received by the laboratory.

Visit www.slabin.com for current certifications.

Accrediting bodies: AIHA-LAP, LLC 100527, NVLAP 101150-0, VELAP/NELAC 460135 - Call laboratory for current national and state certifications.

Method reporting limit is 1%. PLM analysis is based on Visual Estimation and NESHAP recommends that any asbestos content less than 10 percent be verified by PLM Point Count or TEM Analysis. This report must not be reproduced except in full with the approval of the laboratory.

Customer Sample No.	SLI Sample/ Layer ID	Sample Identification/ Layer Name	PLM Analysis Results	
			Asbestos Fibers	Other Materials
6	32276098	Office West Side		
Layer 1:	Wallboard White, Powdery		None Detected	5% CELLULOSE FIBER 95% NON FIBROUS MATERIAL
Layer 2:	Tape Beige, Fibrous		None Detected	98% CELLULOSE FIBER 2% NON FIBROUS MATERIAL
Layer 3:	Joint Compound White, Granular		None Detected	100% NON FIBROUS MATERIAL
7	32276099	Office Center		
Layer 1:	Wallboard White, Powdery		None Detected	6% CELLULOSE FIBER 94% NON FIBROUS MATERIAL
Layer 2:	Tape Beige, Fibrous		None Detected	98% CELLULOSE FIBER 2% NON FIBROUS MATERIAL
Layer 3:	Joint Compound White, Granular		None Detected	100% NON FIBROUS MATERIAL
8	32276100	Office Rear		
Layer 1:	Wallboard White, Powdery		None Detected	8% CELLULOSE FIBER 92% NON FIBROUS MATERIAL
Layer 2:	Tape Beige, Fibrous		None Detected	95% CELLULOSE FIBER 5% NON FIBROUS MATERIAL
Layer 3:	Joint Compound White, Granular		None Detected	100% NON FIBROUS MATERIAL
9	32276101	Office Center		
Layer 1:	Floor Tile Gray, Organically Bound		None Detected	100% NON FIBROUS MATERIAL
Layer 2:	Mastic Yellow, Soft		None Detected	100% NON FIBROUS MATERIAL
Layer 3:	Floor Tile White, Organically Bound		None Detected	100% NON FIBROUS MATERIAL

Total Number of Pages in Report: 7

Results relate only to samples as received by the laboratory.

Visit www.slabinc.com for current certifications.

Accrediting bodies: AIHA-LAP, LLC 100527, NVLAP 101150-0, VELAP/NELAC 460135 - Call laboratory for current national and state certifications.

Method reporting limit is 1%. PLM analysis is based on Visual Estimation and NESHAP recommends that any asbestos content less than 10 percent be verified by PLM Point Count or TEM Analysis. This report must not be reproduced except in full with the approval of the laboratory.

Customer Sample No.	SLI Sample/ Layer ID	Sample Identification/ Layer Name	PLM Analysis Results	
			Asbestos Fibers	Other Materials
Layer 4:	Mastic Yellow, Soft		None Detected	100% NON FIBROUS MATERIAL
10	32276102	Office Rear		
Layer 1:	Baseboard Mastic Tan, Soft		None Detected	100% NON FIBROUS MATERIAL
11	32276103	Office Front		
Layer 1:	Baseboard Mastic Beige, Soft		None Detected	100% NON FIBROUS MATERIAL
12	32276104	Office Manager Office		
Layer 1:	Mastic Yellow, Soft		None Detected	98% NON FIBROUS MATERIAL 2% SYNTHETIC FIBER
Layer 2:	Floor Tile Gray, Organically Bound		None Detected	100% NON FIBROUS MATERIAL
Layer 3:	Mastic Beige, Soft No White Floor Tile Found.		None Detected	100% NON FIBROUS MATERIAL
13	32276105	Office Rear		
Layer 1:	Baseboard Mastic Tan, Soft		None Detected	2% CELLULOSE FIBER 98% NON FIBROUS MATERIAL
Layer 2:	Baseboard Mastic Yellow, Soft		None Detected	100% NON FIBROUS MATERIAL
14	32276106	Office Center		
Layer 1:	Floor Tile White, Organically Bound		None Detected	100% NON FIBROUS MATERIAL
Layer 2:	Mastic Yellow, Soft		None Detected	100% NON FIBROUS MATERIAL
Layer 3:	Floor Tile Gray, Organically Bound		None Detected	100% NON FIBROUS MATERIAL

Total Number of Pages in Report: 7

Results relate only to samples as received by the laboratory.

Visit www.slabinc.com for current certifications.

Accrediting bodies: AIHA-LAP, LLC 100527, NVLAP 101150-0, VELAP/NELAC 460135 - Call laboratory for current national and state certifications.

Method reporting limit is 1%. PLM analysis is based on Visual Estimation and NESHAP recommends that any asbestos content less than 10 percent be verified by PLM Point Count or TEM Analysis. This report must not be reproduced except in full with the approval of the laboratory.

Customer Sample No.	SLI Sample/ Layer ID	Sample Identification/ Layer Name	PLM Analysis Results	
			Asbestos Fibers	Other Materials
Layer 4:	Mastic Yellow, Soft		None Detected	100% NON FIBROUS MATERIAL
15	32276107	Office Center		
Layer 1:	Carpet Mastic Yellow, Soft		None Detected	98% NON FIBROUS MATERIAL 2% SYNTHETIC FIBER
16	32276108	Office Center		
Layer 1:	Carpet Mastic Yellow, Soft		None Detected	97% NON FIBROUS MATERIAL 3% SYNTHETIC FIBER
17	32276109	Office Small		
Layer 1:	Floor Tile Black, Organically Bound		None Detected	100% NON FIBROUS MATERIAL
Layer 2:	Mastic Beige, Soft		None Detected	100% NON FIBROUS MATERIAL
Layer 3:	Leveling Compound White, Granular		None Detected	100% NON FIBROUS MATERIAL
18	32276110	Office Small		
Layer 1:	Floor Tile Black, Organically Bound		None Detected	100% NON FIBROUS MATERIAL
Layer 2:	Mastic Beige, Soft		None Detected	100% NON FIBROUS MATERIAL
Layer 3:	Leveling Compound White, Granular		None Detected	100% NON FIBROUS MATERIAL
19	32276111	Office Small		
Layer 1:	Floor Tile Black, Organically Bound		None Detected	100% NON FIBROUS MATERIAL
Layer 2:	Mastic Beige, Soft		None Detected	100% NON FIBROUS MATERIAL

Total Number of Pages in Report: 7

Results relate only to samples as received by the laboratory.

Visit www.slabinc.com for current certifications.

Accrediting bodies: AIHA-LAP, LLC 100527, NVLAP 101150-0, VELAP/NELAC 460135 - Call laboratory for current national and state certifications.

Method reporting limit is 1%. PLM analysis is based on Visual Estimation and NESHAP recommends that any asbestos content less than 10 percent be verified by PLM Point Count or TEM Analysis. This report must not be reproduced except in full with the approval of the laboratory.

Customer Sample No.	SLI Sample/ Layer ID	Sample Identification/ Layer Name	PLM Analysis Results	
			Asbestos Fibers	Other Materials
Layer 3:	Leveling Compound White, Granular		None Detected	100% NON FIBROUS MATERIAL
20	32276112	Office Center		
Layer 1:	Ceiling Tile White/Gray, Fibrous		None Detected	40% CELLULOSE FIBER 10% FOAMED GLASS 40% MINERAL/GLASS WOOL 10% NON FIBROUS MATERIAL
21	32276113	Office Rear		
Layer 1:	Ceiling Tile White/Gray, Fibrous		None Detected	40% CELLULOSE FIBER 10% FOAMED GLASS 40% MINERAL/GLASS WOOL 10% NON FIBROUS MATERIAL
22	32276114	Office Front		
Layer 1:	Ceiling Tile White/Gray, Fibrous		None Detected	40% CELLULOSE FIBER 10% FOAMED GLASS 40% MINERAL/GLASS WOOL 10% NON FIBROUS MATERIAL
23	32276115	Exterior North Wall		
Layer 1:	Stucco Gray, Hard		None Detected	100% NON FIBROUS MATERIAL
24	32276116	Exterior West Wall		
Layer 1:	Stucco Gray, Hard		None Detected	100% NON FIBROUS MATERIAL
25	32276117	Exterior SW Corner		
Layer 1:	Stucco Gray, Hard		None Detected	100% NON FIBROUS MATERIAL
26	32276118	Shop Partition Wall		
Layer 1:	Wallboard White, Powdery		None Detected	8% CELLULOSE FIBER 92% NON FIBROUS MATERIAL
Layer 2:	Joint Compound White, Granular		None Detected	100% NON FIBROUS MATERIAL

Total Number of Pages in Report: 7

Results relate only to samples as received by the laboratory.

Visit www.slabin.com for current certifications.

Accrediting bodies: AIHA-LAP, LLC 100527, NVLAP 101150-0, VELAP/NELAC 460135 - Call laboratory for current national and state certifications.

Method reporting limit is 1%. PLM analysis is based on Visual Estimation and NESHAP recommends that any asbestos content less than 10 percent be verified by PLM Point Count or TEM Analysis. This report must not be reproduced except in full with the approval of the laboratory.

Customer Sample No.	SLI Sample/ Layer ID	Sample Identification/ Layer Name	PLM Analysis Results	
			Asbestos Fibers	Other Materials
27	32276119	Shop East End		
Layer 1:	Hard Material Gray, Hard		None Detected	100% NON FIBROUS MATERIAL
28	32276120	Shop East End		
Layer 1:	Hard Material Gray, Hard		None Detected	100% NON FIBROUS MATERIAL
29	32276121	Shop East End		
Layer 1:	Hard Material Gray, Hard		None Detected	100% NON FIBROUS MATERIAL <1% SYNTHETIC FIBER
30	32276122	Shop Center		
Layer 1:	Hard Material Gray/Beige, Hard		None Detected	100% NON FIBROUS MATERIAL
31	32276123	Shop Center East		
Layer 1:	Hard Material Gray/Beige, Hard		None Detected	100% NON FIBROUS MATERIAL
32	32276124	Shop East		
Layer 1:	Hard Material Gray/Beige, Hard		None Detected	100% NON FIBROUS MATERIAL
33	32276125	Roof SW Vent		
Layer 1:	Mastic Black, Bituminous		None Detected	10% CELLULOSE FIBER 90% NON FIBROUS MATERIAL
34	32276126	Roof North		
Layer 1:	Mastic White, Soft		None Detected	100% NON FIBROUS MATERIAL
35	32276127	Roof Center		
Layer 1:	Mastic Black, Bituminous		None Detected	2% CELLULOSE FIBER 98% NON FIBROUS MATERIAL

Total Number of Pages in Report: 7

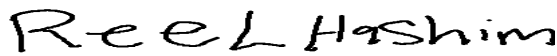
Results relate only to samples as received by the laboratory.

Visit www.slabinc.com for current certifications.

Accrediting bodies: AIHA-LAP, LLC 100527, NVLAP 101150-0, VELAP/NELAC 460135 - Call laboratory for current national and state certifications.

Method reporting limit is 1%. PLM analysis is based on Visual Estimation and NESHAP recommends that any asbestos content less than 10 percent be verified by PLM Point Count or TEM Analysis. This report must not be reproduced except in full with the approval of the laboratory.

Customer Sample No.	SLI Sample/ Layer ID	Sample Identification/ Layer Name	PLM Analysis Results	
			Asbestos Fibers	Other Materials
36	32276128	Roof West		
Layer 1:	Mastic Black, Soft		None Detected	2% CELLULOSE FIBER 98% NON FIBROUS MATERIAL
37	32276129	Roof For Shed South		
Layer 1:	Shingle Beige/Black/Brown, Bituminous/Granular Sample was inhomogenous, subsamples of each component were analyzed separately.		None Detected	10% MINERAL/GLASS WOOL 90% NON FIBROUS MATERIAL
Layer 2:	Underlayment Black, Bituminous/Fibrous		None Detected	40% CELLULOSE FIBER 60% NON FIBROUS MATERIAL
38	32276130	Roof For Shed South		
Layer 1:	Shingle Beige/Black/Brown, Bituminous/Granular Sample was inhomogenous, subsamples of each component were analyzed separately.		None Detected	10% MINERAL/GLASS WOOL 90% NON FIBROUS MATERIAL
Layer 2:	Underlayment Black, Bituminous/Fibrous		None Detected	35% CELLULOSE FIBER 65% NON FIBROUS MATERIAL
39	32276131	Roof For Shed South		
Layer 1:	Shingle Beige/Black/Brown, Bituminous/Granular Sample was inhomogenous, subsamples of each component were analyzed separately.		None Detected	10% MINERAL/GLASS WOOL 90% NON FIBROUS MATERIAL
Layer 2:	Underlayment Black, Bituminous/Fibrous		None Detected	40% CELLULOSE FIBER 60% NON FIBROUS MATERIAL


Analyst: **Reel Hashim**

Reviewed By: **Hind Eldanaf, Microscopy Supervisor****Total Number of Pages in Report: 7**

Results relate only to samples as received by the laboratory.

Visit www.slabinc.com for current certifications.

Accrediting bodies: AIHA-LAP, LLC 100527, NVLAP 101150-0, VELAP/NELAC 460135 - Call laboratory for current national and state certifications.

Method reporting limit is 1%. PLM analysis is based on Visual Estimation and NESHAP recommends that any asbestos content less than 10 percent be verified by PLM Point Count or TEM Analysis. This report must not be reproduced except in full with the approval of the laboratory.

GEN VICE SHOP 198-14-2646

CLIENT
BAYWEST Development
2 Henry Adams Street
450
San Francisco
CA 94103

JOB SITE
Crown Chevy Dealership
7544 Dublin Boulevard
Dublin
CA 94568

KELCO Services JOB# 1407-16 LAB LOGIN #
COLLECTED BY: DAVE GAYTOR
COLLECTED DATE: 7-31-14
TURN AROUND TIME: Normal TAT 4 8 24 48 5-DAY
RESULTS NEEDED BY

CIRCLE TYPE OF BULK ANALYSIS

PLM ☒ LEAD PAINT ☐ LEAD WIPE ☐ NON VIABLE MOLD ☐ VIABLE MOLD ☐ eCOLI ☐ OTHER

SAMPLES REC'D _____ ANALYZE TO FIRST POSITIVE YES NO
REPORT RESULTS TO PROJECT MANAGER Tim Cannard

NOTES & COMMENTS:

WRITE ON LAG REPORT TITLE "SERVICE SHOP"

CHAIN OF CUSTODY & SAMPLE SUBMITAL FORM PAGE 1 OF 3
KELCO Services JOB# 1407-16
Crown Chevy Dealership

FIELD NUMBER	LOCATION (bldg, rm#, area)	COLOR	MATERIAL or SUBSTRATE (ft w size, mastic, etc.)	NOTES: Like condition, damage, quantity, inside what, beneath what? direction in building (N, S, E, W) etc.)
1	OFFICE WEST WALL	WHITE	WALL TEXTURE (WT)	
2				
3	NORTH SIDE			
4	EAST SIDE			
5	WEST SIDE			
6			WALL JC + W-T.	
7	CENTRAL			
8	REAR			
9	CENTRAL	GRAY WHITE	12X12 GRAY WHITE FLOOR Tiles + Floor Mastic	

RELEASED BY [Signature] DATE 7-31-14 TIME
RECEIVED BY [Signature] DATE 8-5-14 TIME 755

SERVICE SHOP - 193-14-2646

CHAIN OF CUSTODY & SAMPLE SUBMITAL FORM

PAGE 2 OF 3

KELLCO Services JOB#: 1407-16
Crown Chevy Dealership

FIELD NUMBER	LOCATION (bldg, rm#, area)	COLOR	MATERIAL or SUBSTRATE (if W size, mastic, etc.)	NOTES: Like condition, damage, quantity, inside what, beneath what? direction in building (N,S,E,W) etc.)
10	Office Area	Tan	PAGE BOARD MASTIC	
11	Front			
12	MATERIALS OFFICE	Gray/White	Yellow CARPET MASTIC 12x12 GRAY/WHITE FLOOR TILE + FLOOR MASTIC	
13	Lean	Tan	PAGEBOARD MASTIC	
14	CEILING	Gray/White	12x12 FLOOR TILE + FLOOR MASTIC	
15		Yellow	CARPET MASTIC	
16				
17	Small	Blue	12x12 FLOOR TILE MASTIC + CARPET MASTIC	150 SF
18				
19				
20	Office Ceiling	White	2'x4' CEILING TILES	
21	Lean			
22	Front			
23	Extension NORTH WALL		STUCCO WALL	
24	WEST WALL			
25	SW CORNER			
26	SHOP PARTITION WALL		WP/STC	
27	SHOP EAST FLOOR		CINOA BLOCK	

RELEASED BY <i>[Signature]</i>	DATE 8-2-14	TIME	RECEIVED BY <i>[Signature]</i>	DATE 8-5-14	TIME 9:55
-----------------------------------	----------------	------	-----------------------------------	----------------	--------------

193-14-2646

CHAIN OF CUSTODY & SAMPLE SUBMITTAL FORM

KELCO Services JOB#: 1407-16

Crown Chevy Dealership

NOTES: Like condition, damage, quantity, inside what, beneath what? direction in building (N,S,E,W) etc.)

FIELD NUMBER	LOCATION (bldg, rm#, area)	COLOR	MATERIAL or SUBSTRATE (ft w/ size, mastic, etc.)	NOTES: Like condition, damage, quantity, inside what, beneath what? direction in building (N,S,E,W) etc.)
28	SHOP EAST END	WHITE	CONCRETE BLOCK	
29				
30	SHOP CENTER		CONCRETE FOUNDATION	
31				
32				
33	ROOF SW VENT	BLACK	PERFORATION MASTIC	
34		WHITE		
35	CENTER	BLACK		
36	WEST			
37	ROOF FOR SHOP SOUTH	POST	SITING & FOUNDATION	200 SF
38				
39				
40				

Crown Chevy Dealership

WorkOrderKey

V: 1020 1020363

Work Order Key

A

1020 / 1020363

~~RELEASED BY~~

DATE _____

TIME

RECEIVED BY

DATE _____

TIME

8-2-14

8-5-14

955

SCHNEIDER LABORATORIES

INCORPORATED

WOKey: 1020364

PLM Worksheet

Customer: 193 Job: 2638

DueDate: 8/5/2014 6:00 PM

Date Received: 8/5/2014

SLI: 32275885	Customer ID:40	QC Sample: No
		5 CF
		5 MG
		90 NF

SCHNEIDER LABORATORIES GLOBAL

INCORPORATED

2512 W. Cary Street • Richmond, Virginia • 23220-5117
804-353-6778 • 800-785-LABS (5227) • (FAX) 804-359-1475

Over 25 Years of Excellence in Service and Technology

LABORATORY ANALYSIS REPORT

Asbestos Identification by EPA Method¹ 600/R-93/116; EPA 600/M4-82-020

ACCOUNT #: 193-14-2638
CUSTOMER: KELLCO SERVICES INC
ADDRESS: 3137 DIABLO AVENUE
HAYWARD, CA 94545-2701

DATE COLLECTED: 7/31/2014
DATE RECEIVED: 8/5/2014
DATE ANALYZED: 8/5/2014
DATE REPORTED: 8/5/2014

PROJECT NAME: 7544 Dublin Blvd

JOB LOCATION: Body Shop

PROJECT NO.: 1407-16

PO NO.:

SampleType: Bulk

Customer Sample No.	SLI Sample/ Layer ID	Sample Identification/ Layer Name	PLM Analysis Results	
			Asbestos Fibers	Other Materials
1	32275846	Ext Wall N		
Layer 1:	Stucco Gray, Hard		None Detected	100% NON FIBROUS MATERIAL
2	32275847	Ext Wall NE Corner		
Layer 1:	Stucco Gray, Hard		None Detected	100% NON FIBROUS MATERIAL
3	32275848	Ext Wall SW Corner		
Layer 1:	Hard Material Gray, Hard		None Detected	100% NON FIBROUS MATERIAL
4	32275849	Ext Wall NW Corner		
Layer 1:	Stucco Gray, Hard		None Detected	100% NON FIBROUS MATERIAL
5	32275850	Ext NW Corner		
Layer 1:	Concrete Gray, Hard		None Detected	100% NON FIBROUS MATERIAL

Total Number of Pages in Report: 7

Results relate only to samples as received by the laboratory.

Visit www.slabin.com for current certifications.

Accrediting bodies: AIHA-LAP, LLC 100527, NVLAP 101150-0, VELAP/NELAC 460135 - Call laboratory for current national and state certifications.

Method reporting limit is 1%. PLM analysis is based on Visual Estimation and NESHAP recommends that any asbestos content less than 10 percent be verified by PLM Point Count or TEM Analysis. This report must not be reproduced except in full with the approval of the laboratory.

Customer Sample No.	SLI Sample/ Layer ID	Sample Identification/ Layer Name	PLM Analysis Results	
			Asbestos Fibers	Other Materials
6	32275851	Ext W Side		
Layer 1:	Concrete Gray, Hard		None Detected	100% NON FIBROUS MATERIAL
7	32275852	Ext Wall W Center		
Layer 1:	Hard Material Gray, Hard		None Detected	100% NON FIBROUS MATERIAL
8	32275853	Ext Wall NW Corner		
Layer 1:	Hard Material Gray, Hard		None Detected	100% NON FIBROUS MATERIAL
9	32275854	Int Center Floor		
Layer 1:	Concrete Gray, Hard		None Detected	100% NON FIBROUS MATERIAL
10	32275855	Int Shop Floor Center		
Layer 1:	Caulk Gray, Brittle		None Detected	5% CELLULOSE FIBER 95% NON FIBROUS MATERIAL
11	32275856	Int Shop North		
Layer 1:	Caulk Gray, Brittle		None Detected	5% CELLULOSE FIBER 95% NON FIBROUS MATERIAL
12	32275857	Int Shop North		
Layer 1:	Caulk Gray, Brittle		None Detected	5% CELLULOSE FIBER 95% NON FIBROUS MATERIAL
13	32275858	Office West		
Layer 1:	Wall Texture White, Powdery		None Detected	15% CELLULOSE FIBER 5% MINERAL/GLASS WOOL 80% NON FIBROUS MATERIAL
Layer 2:	Joint Compound White, Granular		None Detected	100% NON FIBROUS MATERIAL

Total Number of Pages in Report: 7

Results relate only to samples as received by the laboratory.

Visit www.slabinc.com for current certifications.

Accrediting bodies: AIHA-LAP, LLC 100527, NVLAP 101150-0, VELAP/NELAC 460135 - Call laboratory for current national and state certifications.

Method reporting limit is 1%. PLM analysis is based on Visual Estimation and NESHAP recommends that any asbestos content less than 10 percent be verified by PLM Point Count or TEM Analysis. This report must not be reproduced except in full with the approval of the laboratory.

Customer Sample No.	SLI Sample/ Layer ID	Sample Identification/ Layer Name	PLM Analysis Results	
			Asbestos Fibers	Other Materials
14	32275859	Office West		
Layer 1:	Wall Texture White, Powdery		None Detected	15% CELLULOSE FIBER 5% MINERAL/GLASS WOOL 80% NON FIBROUS MATERIAL
Layer 2:	Joint Compound White, Granular		None Detected	100% NON FIBROUS MATERIAL
15	32275860	Office Center		
Layer 1:	Wall Texture White, Powdery		None Detected	15% CELLULOSE FIBER 5% MINERAL/GLASS WOOL 80% NON FIBROUS MATERIAL
Layer 2:	Joint Compound White, Granular		None Detected	100% NON FIBROUS MATERIAL
16	32275861	Office Rear		
Layer 1:	Wall Texture White, Powdery		None Detected	15% CELLULOSE FIBER 5% MINERAL/GLASS WOOL 80% NON FIBROUS MATERIAL
Layer 2:	Joint Compound White, Granular		None Detected	100% NON FIBROUS MATERIAL
17	32275862	Office Rear		
Layer 1:	Wall Texture White, Powdery		None Detected	15% CELLULOSE FIBER 5% MINERAL/GLASS WOOL 80% NON FIBROUS MATERIAL
Layer 2:	Joint Compound White, Granular		None Detected	100% NON FIBROUS MATERIAL
18	32275863	Outside Office E Wall		
Layer 1:	Wallboard White, Powdery		None Detected	15% CELLULOSE FIBER 5% MINERAL/GLASS WOOL 80% NON FIBROUS MATERIAL
Layer 2:	Joint Compound Tan, Granular		None Detected	10% CELLULOSE FIBER 90% NON FIBROUS MATERIAL
19	32275864	Shop Partition Wall		
Layer 1:	Wallboard Beige, Powdery		None Detected	20% CELLULOSE FIBER 80% NON FIBROUS MATERIAL

Total Number of Pages in Report: 7

Results relate only to samples as received by the laboratory.

Visit www.slabinc.com for current certifications.

Accrediting bodies: AIHA-LAP, LLC 100527, NVLAP 101150-0, VELAP/NELAC 460135 - Call laboratory for current national and state certifications.

Method reporting limit is 1%. PLM analysis is based on Visual Estimation and NESHAP recommends that any asbestos content less than 10 percent be verified by PLM Point Count or TEM Analysis. This report must not be reproduced except in full with the approval of the laboratory.

Customer Sample No.	SLI Sample/ Layer ID	Sample Identification/ Layer Name	PLM Analysis Results	
			Asbestos Fibers	Other Materials
Layer 2:	Joint Compound White, Granular No Wall Texture Material Found!		None Detected	10% MINERAL/GLASS WOOL 90% NON FIBROUS MATERIAL
20	32275865	Shop N Wall		
Layer 1:	Wallboard White, Powdery		None Detected	15% CELLULOSE FIBER 5% MINERAL/GLASS WOOL 80% NON FIBROUS MATERIAL
Layer 2:	Joint Compound White, Granular		None Detected	15% CELLULOSE FIBER 85% NON FIBROUS MATERIAL
21	32275866	Office W		
Layer 1:	Carpet Mastic Yellow, Soft		None Detected	2% CELLULOSE FIBER 2% MINERAL/GLASS WOOL 96% NON FIBROUS MATERIAL
Layer 2:	Floor Tile Black, Organically Bound		None Detected	100% NON FIBROUS MATERIAL
Layer 3:	Mastic/Granular Mtrl Yellow/Gray, Soft/Granular Unable to separate individual layers.		None Detected	5% CELLULOSE FIBER 95% NON FIBROUS MATERIAL
22	32275867	Office W		
Layer 1:	Carpet Mastic Yellow, Soft		None Detected	2% CELLULOSE FIBER 2% MINERAL/GLASS WOOL 96% NON FIBROUS MATERIAL
Layer 2:	Floor Tile Black, Organically Bound		None Detected	100% NON FIBROUS MATERIAL
Layer 3:	Mastic/Granular Mtrl Yellow/Gray, Soft/Granular Unable to separate individual layers.		None Detected	5% CELLULOSE FIBER 95% NON FIBROUS MATERIAL
23	32275868	Office Center		
Layer 1:	Floor Tile Black, Organically Bound		None Detected	100% NON FIBROUS MATERIAL
Layer 2:	Mastic Yellow, Soft		None Detected	100% NON FIBROUS MATERIAL

Total Number of Pages in Report: 7

Results relate only to samples as received by the laboratory.

Visit www.slabinc.com for current certifications.

Accrediting bodies: AIHA-LAP, LLC 100527, NVLAP 101150-0, VELAP/NELAC 460135 - Call laboratory for current national and state certifications.

Method reporting limit is 1%. PLM analysis is based on Visual Estimation and NESHAP recommends that any asbestos content less than 10 percent be verified by PLM Point Count or TEM Analysis. This report must not be reproduced except in full with the approval of the laboratory.

Customer Sample No.	SLI Sample/ Layer ID	Sample Identification/ Layer Name	PLM Analysis Results	
			Asbestos Fibers	Other Materials
24	32275869	Office Rear		
Layer 1:	Carpet Mastic Yellow, Soft		None Detected	100% NON FIBROUS MATERIAL
Layer 2:	Floor Tile Tan, Organically Bound		None Detected	100% NON FIBROUS MATERIAL
Layer 3:	Mastic Brown, Soft		None Detected	100% NON FIBROUS MATERIAL
Layer 4:	Leveling Compound White, Granular Leveling Compound Found on Mastic!		None Detected	100% NON FIBROUS MATERIAL
25	32275870	Office Rear		
Layer 1:	Carpet Mastic Yellow, Soft		None Detected	100% NON FIBROUS MATERIAL
Layer 2:	Floor Tile Tan, Organically Bound		None Detected	100% NON FIBROUS MATERIAL
Layer 3:	Mastic Brown, Soft		None Detected	100% NON FIBROUS MATERIAL
Layer 4:	Leveling Compound White, Granular		None Detected	100% NON FIBROUS MATERIAL
26	32275871	Office Rear		
Layer 1:	Floor Tile Tan, Organically Bound		None Detected	100% NON FIBROUS MATERIAL
Layer 2:	Mastic Yellow, Soft		None Detected	3% CELLULOSE FIBER 97% NON FIBROUS MATERIAL
27	32275872	Office Rear		
Layer 1:	Leveling Compound White, Granular		None Detected	100% NON FIBROUS MATERIAL
Layer 2:	Mastic Yellow, Soft		None Detected	3% CELLULOSE FIBER 97% NON FIBROUS MATERIAL

Total Number of Pages in Report: 7

Results relate only to samples as received by the laboratory.

Visit www.slabin.com for current certifications.

Accrediting bodies: AIHA-LAP, LLC 100527, NVLAP 101150-0, VELAP/NELAC 460135 - Call laboratory for current national and state certifications.

Method reporting limit is 1%. PLM analysis is based on Visual Estimation and NESHAP recommends that any asbestos content less than 10 percent be verified by PLM Point Count or TEM Analysis. This report must not be reproduced except in full with the approval of the laboratory.

Customer Sample No.	SLI Sample/ Layer ID	Sample Identification/ Layer Name	PLM Analysis Results	
			Asbestos Fibers	Other Materials
28	32275873	Office Rear		
Layer 1:	Leveling Compound White, Granular		None Detected	100% NON FIBROUS MATERIAL
Layer 2:	Mastic Yellow, Soft		None Detected	3% CELLULOSE FIBER 97% NON FIBROUS MATERIAL
29	32275874	Office Center		
Layer 1:	Baseboard Black, Rubbery		None Detected	100% NON FIBROUS MATERIAL
Layer 2:	Mastic White/Brown, Soft/Fibrous Unable to separate individual layers.		None Detected	55% CELLULOSE FIBER 45% NON FIBROUS MATERIAL
30	32275875	Office Center		
Layer 1:	Baseboard Black, Rubbery		None Detected	100% NON FIBROUS MATERIAL
Layer 2:	Mastic White/Brown, Soft/Fibrous Unable to separate individual layers.		None Detected	55% CELLULOSE FIBER 45% NON FIBROUS MATERIAL
31	32275876	Office Rear		
Layer 1:	Baseboard Black, Rubbery		None Detected	100% NON FIBROUS MATERIAL
Layer 2:	Mastic White/Brown, Soft/Fibrous Unable to separate individual layers.		None Detected	55% CELLULOSE FIBER 45% NON FIBROUS MATERIAL
32	32275877	Office Center		
Layer 1:	Ceiling Tile White, Fibrous		None Detected	55% CELLULOSE FIBER 30% MINERAL/GLASS WOOL 15% NON FIBROUS MATERIAL
33	32275878	Office Rear		
Layer 1:	Ceiling Tile White, Fibrous		None Detected	55% CELLULOSE FIBER 30% MINERAL/GLASS WOOL 15% NON FIBROUS MATERIAL

Total Number of Pages in Report: 7

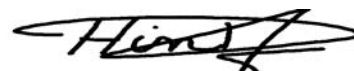
Results relate only to samples as received by the laboratory.

Visit www.slabinc.com for current certifications.

Accrediting bodies: AIHA-LAP, LLC 100527, NVLAP 101150-0, VELAP/NELAC 460135 - Call laboratory for current national and state certifications.

Method reporting limit is 1%. PLM analysis is based on Visual Estimation and NESHAP recommends that any asbestos content less than 10 percent be verified by PLM Point Count or TEM Analysis. This report must not be reproduced except in full with the approval of the laboratory.

Customer Sample No.	SLI Sample/ Layer ID	Sample Identification/ Layer Name	PLM Analysis Results	
			Asbestos Fibers	Other Materials
34	32275879	Office Rear		
Layer 1:	Ceiling Tile White, Fibrous		None Detected	55% CELLULOSE FIBER 30% MINERAL/GLASS WOOL 15% NON FIBROUS MATERIAL
35	32275880	Roof N		
Layer 1:	Roof Mastic Black, Bituminous		5% CHRYSOTILE	95% NON FIBROUS MATERIAL
36	32275881	Roof Center		
Layer 1:	Roof Mastic Black, Bituminous		5% CHRYSOTILE	95% NON FIBROUS MATERIAL
37	32275882	Roof S		
Layer 1:	Roof Mastic Black, Bituminous		5% CHRYSOTILE	95% NON FIBROUS MATERIAL
38	32275883	Roof HVAC S Ducts		
Layer 1:	Duct Material Silver, Soft		None Detected	5% CELLULOSE FIBER 5% MINERAL/GLASS WOOL 90% NON FIBROUS MATERIAL
39	32275884	Roof HVAC S Ducts		
Layer 1:	Duct Material Silver, Soft		None Detected	5% CELLULOSE FIBER 5% MINERAL/GLASS WOOL 90% NON FIBROUS MATERIAL
40	32275885	Roof HVAC S Ducts		
Layer 1:	Duct Material Silver, Soft		None Detected	5% CELLULOSE FIBER 5% MINERAL/GLASS WOOL 90% NON FIBROUS MATERIAL


Analyst: **Johnathan D. Wilson**

Reviewed By: **Hind Eldanaf, Microscopy Supervisor****Total Number of Pages in Report: 7**

Results relate only to samples as received by the laboratory.

Visit www.slabinc.com for current certifications.

Accrediting bodies: AIHA-LAP, LLC 100527, NVLAP 101150-0, VELAP/NELAC 460135 - Call laboratory for current national and state certifications.

Method reporting limit is 1%. PLM analysis is based on Visual Estimation and NESHAP recommends that any asbestos content less than 10 percent be verified by PLM Point Count or TEM Analysis. This report must not be reproduced except in full with the approval of the laboratory.

CLIENT

BAYWEST Development
2 Henry Adams Street
450
San Francisco
CA 94103

JOB SITE

Crown Chevy Dealership
7544 Dublin Boulevard
Dublin
CA 94568

KELCO Services JOB# 1407-16

LAB LOGIN #

COLLECTED BY: David Gaytor

COLLECTED DATE: 7-31-14

TURN AROUND TIME: Normal TAT

4

8 24

48 5-DAY

CIRCLE TYPE OF BULK ANALYSIS

PLM LEAD PAINT LEAD WIPE NON VIABLE MOLD VIABLE MOLD eCOLI OTHER

SAMPLES REC'D _____ ANALYZE TO FIRST POSITIVE YES NO

REPORT RESULTS TO PROJECT MANAGER

Jim Cannard

NOTES & COMMENTS:

WRITE "Body Stop" on ~~THE~~ TITLE OF REPORT.

CHAIN OF CUSTODY & SAMPLE SUBMITAL FORM

PAGE 1 OF 3

KELCO Services JOB# 1407-16

Crown Chevy Dealership

FIELD NUMBER	LOCATION (bldg, rm#, area)	COLOR	MATERIAL or SUBSTRATE (ft w size, mastic, etc.)	NOTES: Like condition, damage, quantity, inside what, beneath what? direction in building (N, S, E, W) etc.)
1	Extension Wall North	White	Stucco wall	1400 sq. ft.
2	↓ NE corner			↓
3	↓ SW corner		Cinder Block wall	
4	↓ NW corner		Stucco wall	
5	Extension NW corner		Concrete Foundation	
6	↓ West side			
7	Extension wall West central		Cinder Block wall	
8	↓ NW corner			
9	Interior Center Floor		Concrete Foundation	

RELEASED BY

DATE

TIME

RECEIVED BY

DATE

TIME

7-31-14

8-5-14

8-5-14

9:55

6 7528 X

Pony SHOP

FIELD NUMBER	LOCATION (bldg, rm#, area)	COLOR	MATERIAL or SUBSTRATE (ft w/ size, mastic, etc.)	NOTES: (like condition, damage, quantity, inside what beneath what? direction in building (N, S, E, W) etc.)
10	INTERIOR SHOP FLOOR CENTER	GRAY	CABLE AT FLOOR SEAM	300 L.F.
11	CORNER			
12				
13	OFFICE WEST	WHITE	WALL TEXTURE	
14	CENTER			
15	CENTER			
16	REAR			
17	REAR			
18	OUTSIDE OFFICE ENTRANCE		WALL BOARD JOINT Compound / WB JC	
19	SHOP PARTITION WALL		WB JC + WALL TEXTURE	
20	SHOP CORNER WALL		WB JC	
21	OFFICE WEST	YELLOW PLINCE	YELLOW CARPET MASTIC PLINCE FLOOR TILE + FLOOR MASTIC	
22				
23	OFFICE CENTER	PLINCE	PLINCE FLOOR TILE + MASTIC	
24	OFFICE REAR	YELLOW TAU	YELLOW CARPET MASTIC PLINCE FLOOR TILE + FLOOR MASTIC	
25				+ LEVelling compound.
26		TRU	PLINCE FLOOR TILE + FLOOR MASTIC	
27		WHITE	Levelling compound.	

RELEASED BY	DATE	TIME	RECEIVED BY	DATE	TIME
<i>[Signature]</i>	7-31-14		<i>[Signature]</i>	8-5-14	955

6 7528x

1300y 5th06

CHAIN OF CUSTODY & SAMPLE SUBMITAL FORM

PAGE 3 OF 3

KELCO Services JOB#: 1407-16

Crown Chevy Dealership

FIELD NUMBER	LOCATION (bldg, rm#, area)	COLOR	MATERIAL or SUBSTRATE (ft w/ size, mastic, etc.)	NOTES: Like condition, damage, quantity, inside what, beneath what? direction in building (N,S,E,W) etc.)
28	OFFICE NERN	WHITE	LEVERIES COMPANION	
29	OFFICE CENTRA	TAN	PRSE BOARD MASTIC	
30	↓	↓	↓	
31	↓ NERN	↓	↓	
32	OFFICE CENTRA	WHITE	2x4' CEILING TILES	
33	↓ NERN	↓	↓	
34	↓	↓	↓	
35	ROOF NORTH	BLACK	PERFORATION MASTIC ROOF	
36	↓ CENTRA	↓	↓	
37	↓ SOUTH	↓	↓	
38	ROOF HVR DUCTS ^{50'x10'}	SILVER	DUCT SEAM MASTIC	
39	↓	↓	↓	
40	↓	↓	↓	

WorkOrderKey

V : \ 1020 \ 1020364

RELEASED BY	DATE	TIME	RECEIVED BY	DATE	TIME
<i>[Signature]</i>	8-2-14		<i>[Signature]</i>	8-5-14	9:55

64 7528x

SCHNEIDER LABORATORIES GLOBAL

INCORPORATED

2512 W. Cary Street • Richmond, Virginia • 23220-5117
804-353-6778 • 800-785-LABS (5227) • (FAX) 804-359-1475

Over 25 Years of Excellence in Service and Technology

LABORATORY ANALYSIS REPORT

Asbestos Identification by EPA Method¹ 600/R-93/116; EPA 600/M4-82-020

ACCOUNT #: 193-14-2645
CUSTOMER: KELLCO SERVICES INC
ADDRESS: 3137 DIABLO AVENUE
HAYWARD, CA 94545-2701

DATE COLLECTED: 8/4/2014
DATE RECEIVED: 8/5/2014
DATE ANALYZED: 8/5/2014
DATE REPORTED: 8/5/2014

PROJECT NAME: Cadillac Building
JOB LOCATION: 7544 Dublin Blvd
PROJECT NO.: 1407-16
PO NO.:

SampleType: Bulk

Customer Sample No.	SLI Sample/ Layer ID	Sample Identification/ Layer Name	PLM Analysis Results	
			Asbestos Fibers	Other Materials
1	32276021	NE Corner Ext		
Layer 1:	Stucco White/Gray, Hard		None Detected	100% NON FIBROUS MATERIAL
2	32276022	N Ext		
Layer 1:	Stucco White/Gray, Hard		None Detected	100% NON FIBROUS MATERIAL
4	32276023	E Side		
Layer 1:	Asphalt Material Black, Hard		None Detected	100% NON FIBROUS MATERIAL
5	32276024	NW Ext		
Layer 1:	Asphalt Material Light Beige, Hard		None Detected	100% NON FIBROUS MATERIAL
6	32276025	N Ext		
Layer 1:	Ceramic Tile Green, Hard		None Detected	100% NON FIBROUS MATERIAL

Total Number of Pages in Report: 7

Results relate only to samples as received by the laboratory.

Visit www.slabin.com for current certifications.

Accrediting bodies: AIHA-LAP, LLC 100527, NVLAP 101150-0, VELAP/NELAC 460135 - Call laboratory for current national and state certifications.

Method reporting limit is 1%. PLM analysis is based on Visual Estimation and NESHAP recommends that any asbestos content less than 10 percent be verified by PLM Point Count or TEM Analysis. This report must not be reproduced except in full with the approval of the laboratory.

Customer Sample No.	SLI Sample/ Layer ID	Sample Identification/ Layer Name	PLM Analysis Results	
			Asbestos Fibers	Other Materials
Layer 2:	Grout Gray, Hard Only Two Layers Found.		None Detected	100% NON FIBROUS MATERIAL
7	32276026	W Ext		
Layer 1:	Asphalt Material Black, Hard		None Detected	100% NON FIBROUS MATERIAL
8	32276027	W Ext		
Layer 1:	Concrete White, Hard		None Detected	100% NON FIBROUS MATERIAL
9	32276028	Roof S		
Layer 1:	Mastic White, Soft		None Detected	100% NON FIBROUS MATERIAL
10	32276029	Roof Center		
Layer 1:	Mastic Gray, Soft		None Detected	100% NON FIBROUS MATERIAL
11	32276030	Roof SW		
Layer 1:	Mastic White, Soft		None Detected	100% NON FIBROUS MATERIAL
12	32276031	E Area		
Layer 1:	Wall Texture White, Granular		None Detected	100% NON FIBROUS MATERIAL
13	32276032	NW Office		
Layer 1:	Wall Texture White, Granular		None Detected	100% NON FIBROUS MATERIAL
14	32276033	NE Office		
Layer 1:	Wall Texture White, Granular		None Detected	100% NON FIBROUS MATERIAL

Total Number of Pages in Report: 7

Results relate only to samples as received by the laboratory.

Visit www.slabinc.com for current certifications.

Accrediting bodies: AIHA-LAP, LLC 100527, NVLAP 101150-0, VELAP/NELAC 460135 - Call laboratory for current national and state certifications.

Method reporting limit is 1%. PLM analysis is based on Visual Estimation and NESHAP recommends that any asbestos content less than 10 percent be verified by PLM Point Count or TEM Analysis. This report must not be reproduced except in full with the approval of the laboratory.

Customer Sample No.	SLI Sample/ Layer ID	Sample Identification/ Layer Name	PLM Analysis Results	
			Asbestos Fibers	Other Materials
15	32276034	SE Office		
Layer 1:	Wall Texture White, Granular		None Detected	100% NON FIBROUS MATERIAL
16	32276035	E Office		
Layer 1:	Wall Texture White, Granular		None Detected	100% NON FIBROUS MATERIAL
17	32276036	Above Ceiling S		
Layer 1:	Wallboard White, Powdery		None Detected	4% CELLULOSE FIBER 96% NON FIBROUS MATERIAL
Layer 2:	Joint Compound White, Granular		None Detected	100% NON FIBROUS MATERIAL
18	32276037	SE Office		
Layer 1:	Wallboard White, Powdery		None Detected	4% CELLULOSE FIBER 96% NON FIBROUS MATERIAL
Layer 2:	Joint Compound White, Granular		None Detected	100% NON FIBROUS MATERIAL
19	32276038	Center		
Layer 1:	Wallboard White, Powdery		None Detected	4% CELLULOSE FIBER 96% NON FIBROUS MATERIAL
Layer 2:	Joint Compound White, Granular		None Detected	100% NON FIBROUS MATERIAL
20	32276039	SE Office		
Layer 1:	Ceiling Tile White, Fibrous		None Detected	40% CELLULOSE FIBER 40% MINERAL/GLASS WOOL 20% NON FIBROUS MATERIAL
21	32276040	Front		
Layer 1:	Ceiling Tile White, Fibrous		None Detected	40% CELLULOSE FIBER 40% MINERAL/GLASS WOOL 20% NON FIBROUS MATERIAL

Total Number of Pages in Report: 7

Results relate only to samples as received by the laboratory.

Visit www.slabinc.com for current certifications.

Accrediting bodies: AIHA-LAP, LLC 100527, NVLAP 101150-0, VELAP/NELAC 460135 - Call laboratory for current national and state certifications.

Method reporting limit is 1%. PLM analysis is based on Visual Estimation and NESHAP recommends that any asbestos content less than 10 percent be verified by PLM Point Count or TEM Analysis. This report must not be reproduced except in full with the approval of the laboratory.

Customer Sample No.	SLI Sample/ Layer ID	Sample Identification/ Layer Name	PLM Analysis Results	
			Asbestos Fibers	Other Materials
22	32276041	Sales Floor		
Layer 1:	Ceiling Tile White, Fibrous		None Detected	40% CELLULOSE FIBER 40% MINERAL/GLASS WOOL 20% NON FIBROUS MATERIAL
23	32276042	Center S Glass Partition		
Layer 1:	Grout White, Hard		None Detected	100% NON FIBROUS MATERIAL
24	32276043	Center S Glass Partition		
Layer 1:	Grout White, Hard		None Detected	100% NON FIBROUS MATERIAL
25	32276044	Center S Glass Partition		
Layer 1:	Grout White, Hard		None Detected	100% NON FIBROUS MATERIAL
26	32276045	SE Area		
Layer 1:	Ceramic Tile Green, Hard		None Detected	100% NON FIBROUS MATERIAL
Layer 2:	Grout Gray, Hard		None Detected	100% NON FIBROUS MATERIAL
Layer 3:	Hard Material Beige, Hard		None Detected	100% NON FIBROUS MATERIAL
27	32276046	E		
Layer 1:	Ceramic Tile Green, Hard		None Detected	100% NON FIBROUS MATERIAL
Layer 2:	Grout Gray, Hard		None Detected	100% NON FIBROUS MATERIAL
Layer 3:	Hard Material Beige, Hard		None Detected	100% NON FIBROUS MATERIAL

Total Number of Pages in Report: 7

Results relate only to samples as received by the laboratory.

Visit www.slabinc.com for current certifications.

Accrediting bodies: AIHA-LAP, LLC 100527, NVLAP 101150-0, VELAP/NELAC 460135 - Call laboratory for current national and state certifications.

Method reporting limit is 1%. PLM analysis is based on Visual Estimation and NESHAP recommends that any asbestos content less than 10 percent be verified by PLM Point Count or TEM Analysis. This report must not be reproduced except in full with the approval of the laboratory.

Customer Sample No.	SLI Sample/ Layer ID	Sample Identification/ Layer Name	PLM Analysis Results	
			Asbestos Fibers	Other Materials
28	32276047	E Office		
Layer 1:	Baseboard Brown, Rubbery		None Detected	100% NON FIBROUS MATERIAL
Layer 2:	Mastic Tan, Soft		None Detected	100% NON FIBROUS MATERIAL
29	32276048	W Office		
Layer 1:	Baseboard Brown, Rubbery		None Detected	100% NON FIBROUS MATERIAL
Layer 2:	Mastic Tan, Soft		None Detected	100% NON FIBROUS MATERIAL
30	32276049	W Office		
Layer 1:	Mastic Yellow, Soft		None Detected	100% NON FIBROUS MATERIAL
31	32276050	NW Office		
Layer 1:	Baseboard Brown, Rubbery		None Detected	100% NON FIBROUS MATERIAL
Layer 2:	Mastic Tan, Soft		None Detected	100% NON FIBROUS MATERIAL
32	32276051	NW Office		
Layer 1:	Mastic Yellow, Soft		None Detected	100% NON FIBROUS MATERIAL
33	32276052	E Office		
Layer 1:	Mastic Yellow, Soft		None Detected	100% NON FIBROUS MATERIAL
34	32276053	Mens Bath		
Layer 1:	Ceramic Tile White/Green, Hard		None Detected	100% NON FIBROUS MATERIAL

Total Number of Pages in Report: 7

Results relate only to samples as received by the laboratory.

Visit www.slabinc.com for current certifications.

Accrediting bodies: AIHA-LAP, LLC 100527, NVLAP 101150-0, VELAP/NELAC 460135 - Call laboratory for current national and state certifications.

Method reporting limit is 1%. PLM analysis is based on Visual Estimation and NESHAP recommends that any asbestos content less than 10 percent be verified by PLM Point Count or TEM Analysis. This report must not be reproduced except in full with the approval of the laboratory.

Customer Sample No.	SLI Sample/ Layer ID	Sample Identification/ Layer Name	PLM Analysis Results	
			Asbestos Fibers	Other Materials
Layer 2:	Grout White, Hard		None Detected	100% NON FIBROUS MATERIAL
Layer 3:	Hard Material Gray, Hard		None Detected	100% NON FIBROUS MATERIAL
35	32276054	Mens Bath		
Layer 1:	Ceramic Tile White/Green, Hard		None Detected	100% NON FIBROUS MATERIAL
Layer 2:	Grout White, Hard		None Detected	100% NON FIBROUS MATERIAL
Layer 3:	Hard Material Gray, Hard		None Detected	100% NON FIBROUS MATERIAL
36	32276055	Womens Bath		
Layer 1:	Ceramic Tile White/Green, Hard		None Detected	100% NON FIBROUS MATERIAL
Layer 2:	Grout White, Hard		None Detected	100% NON FIBROUS MATERIAL
Layer 3:	Hard Material Gray, Hard		None Detected	100% NON FIBROUS MATERIAL
37	32276056	Mens Bath		
Layer 1:	Ceramic Tile Gray, Hard		None Detected	100% NON FIBROUS MATERIAL
Layer 2:	Grout Gray, Hard		None Detected	100% NON FIBROUS MATERIAL
Layer 3:	Mastic Tan, Brittle		None Detected	100% NON FIBROUS MATERIAL
38	32276057	Mens Bath		
Layer 1:	Ceramic Tile Gray, Hard		None Detected	100% NON FIBROUS MATERIAL

Total Number of Pages in Report: 7

Results relate only to samples as received by the laboratory.

Visit www.slabinc.com for current certifications.

Accrediting bodies: AIHA-LAP, LLC 100527, NVLAP 101150-0, VELAP/NELAC 460135 - Call laboratory for current national and state certifications.

Method reporting limit is 1%. PLM analysis is based on Visual Estimation and NESHAP recommends that any asbestos content less than 10 percent be verified by PLM Point Count or TEM Analysis. This report must not be reproduced except in full with the approval of the laboratory.

Customer Sample No.	SLI Sample/ Layer ID	Sample Identification/ Layer Name	PLM Analysis Results	
			Asbestos Fibers	Other Materials
Layer 2:	Grout Gray, Hard		None Detected	100% NON FIBROUS MATERIAL
Layer 3:	Mastic Tan, Brittle		None Detected	100% NON FIBROUS MATERIAL
39	32276058	Womens Bath		
Layer 1:	Ceramic Tile Gray, Hard		None Detected	100% NON FIBROUS MATERIAL
Layer 2:	Grout Gray, Hard		None Detected	100% NON FIBROUS MATERIAL
Layer 3:	Mastic Tan, Brittle		None Detected	100% NON FIBROUS MATERIAL
40	32276059	N Floor		
Layer 1:	Hard Material Gray, Hard		None Detected	100% NON FIBROUS MATERIAL
41	32276060	Floor E		
Layer 1:	Hard Material Gray, Hard		None Detected	100% NON FIBROUS MATERIAL
42	32276061	Floor N		
Layer 1:	Hard Material Gray, Hard		None Detected	100% NON FIBROUS MATERIAL

Analyst:

MOHAMMED B. HASHIM

Reviewed By:

Hind Eldanaf, Microscopy Supervisor

Total Number of Pages in Report: 7

Results relate only to samples as received by the laboratory.

Visit www.slabinc.com for current certifications.

Accrediting bodies: AIHA-LAP, LLC 100527, NVLAP 101150-0, VELAP/NELAC 460135 - Call laboratory for current national and state certifications.

Method reporting limit is 1%. PLM analysis is based on Visual Estimation and NESHAP recommends that any asbestos content less than 10 percent be verified by PLM Point Count or TEM Analysis. This report must not be reproduced except in full with the approval of the laboratory.

CADILLAC BUILDING 193-14-2645

CLIENT BAYWEST Development 2 Henry Adams Street 450 San Francisco CA		JOB SITE Crown Chevy Dealership 7544 Dublin Boulevard Dublin CA		KELCO Services JOB# 1407-16	LAB LOGIN #
94103		94568		COLLECTED BY: <u>Bayton</u>	
				COLLECTED DATE: <u>8-4-14</u>	
				TURN AROUND TIME: Normal TAT	4 8 24 28 5-DAY
				RESULTS NEEDED BY	

CIRCLE TYPE OF BULK ANALYSIS

☒ **PLM** ☐ **LEAD PAINT** ☐ **LEAD WIPE** ☐ **NON VIABLE MOLD** ☐ **VIABLE MOLD** ☐ **eCOLI** ☐ **OTHER**

SAMPLES REC'D _____ ANALYZE TO FIRST POSITIVE YES NO ☐ ☐

REPORT RESULTS TO PROJECT MANAGER ☐ Tim Cannard

NOTES & COMMENTS:

WRITE ON LAB REPORT TITLE: "CADILLAC BUILDING" THRU

CHAIN OF CUSTODY & SAMPLE SUBMITAL FORM				PAGE	KELCO Services JOB# 1407-16	
				1	Crown Chevy Dealership	
FIELD NUMBER	LOCATION (bldg, rm#, area)	COLOR	MATERIAL or SUBSTRATE (ft w/ size, mastic, etc.)	NOTES: Like condition, damage, quantity, inside what, beneath what? direction in building (N,S,E,W) etc.)		
1	NE CORNER EXTENSION	WHITE	STUCCO WALL			
2	WORTH					
3	NO SAMPLE					
4	EAST SIDE	BLACK	ASPHALT EXTENSION			
5	NW EXTENSION		ASPHALT			
6	WORTH	GREEN	12"X12" CERAMIC TILE	6 INCH + THIN SET		
7	WEST	BLACK	ASPHALT			
8	WEST	WHITE	CONCRETE FOUNDATION			
9	POOF SOUTH		PENETRATION MASTIC			

RELEASED BY <u>[Signature]</u>	DATE <u>8-4-14</u>	TIME	RECEIVED BY <u>[Signature]</u>	DATE <u>8-5-14</u>	TIME <u>935</u>
--------------------------------	--------------------	------	--------------------------------	--------------------	-----------------

6-7517X

CADILLAC BUILDING

CHAIN OF CUSTODY & SAMPLE SUBMITAL FORM

PAGE 2 OF 3

KELCO Services JOB#: 1407-16
Crown Chevy Dealership

FIELD NUMBER	LOCATION (bldg, rm#, area)	COLOR	MATERIAL or SUBSTRATE (ft w/ size, mastic, etc.)	NOTES: Like condition, damage, quantity, inside what beneath what? direction in building (N, S, E, W) etc.)
10	ROOF CENTER	GRAY	PERMANENT MASTIC	
11	ROOF SW	WHITE	↓	
12	EAST AREA	↓	WALL TEXTURE	
13	NW OFFICE	↓	↓	
14	NE OFFICE	↓	↓	
15	SE OFFICE	↓	↓	
16	EAST OFFICE	↓	↓	
17	ROOF CRILING SOUTH	↓	WALL BOND/JOINT COMPOUND (W/B/J)	
18	SE OFFICE	↓	W/B/J	
19	CENTER	↓	↓	
20	SE OFFICE	↓	2'x4' CRILING TILES	
21	FLOOR	↓	↓	
22	SURF FLOOR	↓	↓	
23	CENTER SOUTH POSITION	WHITE	GLASS GROUT	
24	↓	↓	↓	
25	↓	↓	↓	
26	SE AREA	GREEN	12"x12" CERAMIC TILES GROUT + TITAN SEAL	
27	FLOOR	↓	↓	

RELEASED BY	DATE	TIME	RECEIVED BY	DATE	TIME

8-5-14

8-5-14

9:55

62 7517 X

Coilite Building

CHAIN OF CUSTODY & SAMPLE SUBMITAL FORM

PAGE 3 OF 3

KELCO Services JOB#: 1407-16

Crown Chey Dealership

FIELD NUMBER	LOCATION (bldg, rm#, area)	COLOR	MATERIAL or SUBSTRATE (ft w/ size, mastic, etc.)	NOTES: Like condition, damage, quantity, inside what, beneath what? direction in building (N,S,E,W) etc.)
28	EAST OFFICE	Tan	PASEBOND MASTIC	
29	WEST			
30		Yellow	CARPET MASTIC	
31	W	Tan	PASEBOND MASTIC	
32		Yellow	CARPET MASTIC	
33	EAST			
34	MENS BATH	WHITE GRAY	4"x4" Ceramic w/ tile, Grout + Tera Set	
35				
36	WOMENS			
37	MENS BATH	GRAY	2"x2" Ceramic Floor Tile, Grout + Mastic	
38				
39	WOMENS			
40	NORTH Floor		STONE Floor	
41	East Floor East			
42	Floor NORTH			

WorkOrderKey

V: 1020 1020372

RELEASED BY	DATE	TIME	RECEIVED BY	DATE	TIME
<i>[Signature]</i>	8-4-11		<i>[Signature]</i>	8-5-11	955

6. 2517 X

SCHNEIDER LABORATORIES GLOBAL

INCORPORATED

2512 W. Cary Street • Richmond, Virginia • 23220-5117
804-353-6778 • 800-785-LABS (5227) • (FAX) 804-359-1475

Over 25 Years of Excellence in Service and Technology

LABORATORY ANALYSIS REPORT

Asbestos Identification by EPA Method¹ 600/R-93/116; EPA 600/M4-82-020

ACCOUNT #: 193-14-2644
CUSTOMER: KELLCO SERVICES INC
ADDRESS: 3137 DIABLO AVENUE
HAYWARD, CA 94545-2701

DATE COLLECTED: 8/1/2014
DATE RECEIVED: 8/5/2014
DATE ANALYZED: 8/5/2014
DATE REPORTED: 8/5/2014

PROJECT NAME: Chevy Building
JOB LOCATION: 7544 Dublin Blvd
PROJECT NO.: 1407-16
PO NO.:

SampleType: Bulk

Customer Sample No.	SLI Sample/ Layer ID	Sample Identification/ Layer Name	PLM Analysis Results	
			Asbestos Fibers	Other Materials
1	32275933	Ext NW Wall		
Layer 1:	Stucco White, Granular		None Detected	100% NON FIBROUS MATERIAL
2	32275934	Ext N Side		
Layer 1:	Concrete White, Granular		None Detected	100% NON FIBROUS MATERIAL
3	32275935	Ext NW Corner		
Layer 1:	Asphalt Material Black, Granular		None Detected	100% NON FIBROUS MATERIAL
4	32275936	Ext W Side		
Layer 1:	Concrete White, Granular		None Detected	100% NON FIBROUS MATERIAL
5	32275937	Ext W Wall		
Layer 1:	Stucco White, Granular		None Detected	100% NON FIBROUS MATERIAL

Total Number of Pages in Report: 14

Results relate only to samples as received by the laboratory.

Visit www.slabinc.com for current certifications.

Accrediting bodies: AIHA-LAP, LLC 100527, NVLAP 101150-0, VELAP/NELAC 460135 - Call laboratory for current national and state certifications.

Method reporting limit is 1%. PLM analysis is based on Visual Estimation and NESHAP recommends that any asbestos content less than 10 percent be verified by PLM Point Count or TEM Analysis. This report must not be reproduced except in full with the approval of the laboratory.

Customer Sample No.	SLI Sample/ Layer ID	Sample Identification/ Layer Name	PLM Analysis Results	
			Asbestos Fibers	Other Materials
6	32275938	Ext SE Corner		
Layer 1:	Stucco White, Granular		None Detected	100% NON FIBROUS MATERIAL
7	32275939	Ext SE Area		
Layer 1:	Asphalt Material Black, Granular		None Detected	100% NON FIBROUS MATERIAL
8	32275940	Ext NE Corner		
Layer 1:	Concrete White, Granular		None Detected	100% NON FIBROUS MATERIAL
9	32275941	Ext NE Area		
Layer 1:	Asphalt Material Black, Granular		None Detected	100% NON FIBROUS MATERIAL
10	32275942	Int Front Show Room		
Layer 1:	Ceiling Tile White, Fibrous		None Detected	75% CELLULOSE FIBER 15% MINERAL/GLASS WOOL 10% NON FIBROUS MATERIAL
11	32275943	Int Front Show Room		
Layer 1:	Ceiling Tile White, Fibrous		None Detected	80% CELLULOSE FIBER 10% MINERAL/GLASS WOOL 10% NON FIBROUS MATERIAL
12	32275944	Int Front Show Room		
Layer 1:	Ceiling Tile White, Fibrous		None Detected	75% CELLULOSE FIBER 10% MINERAL/GLASS WOOL 15% NON FIBROUS MATERIAL
13	32275945	Roof Center HVAC Area		
Layer 1:	Spray On Foam White, Foamy		None Detected	100% NON FIBROUS MATERIAL
14	32275946	Roof Center HVAC Area		
Layer 1:	Spray On Foam White, Foamy		None Detected	100% NON FIBROUS MATERIAL

Total Number of Pages in Report: 14

Results relate only to samples as received by the laboratory.

Visit www.slabinc.com for current certifications.

Accrediting bodies: AIHA-LAP, LLC 100527, NVLAP 101150-0, VELAP/NELAC 460135 - Call laboratory for current national and state certifications.

Method reporting limit is 1%. PLM analysis is based on Visual Estimation and NESHAP recommends that any asbestos content less than 10 percent be verified by PLM Point Count or TEM Analysis. This report must not be reproduced except in full with the approval of the laboratory.

Customer Sample No.	SLI Sample/ Layer ID	Sample Identification/ Layer Name	PLM Analysis Results	
			Asbestos Fibers	Other Materials
15	32275947	Roof Center HVAC Area		
Layer 1:	Spray On Foam White, Foamy		None Detected	100% NON FIBROUS MATERIAL
16	32275948	Roof HVAC Ducts		
Layer 1:	Duct Mastic Black, Bituminous		None Detected	6% CELLULOSE FIBER 94% NON FIBROUS MATERIAL
17	32275949	Roof HVAC Ducts		
Layer 1:	Duct Mastic Black, Bituminous		None Detected	7% CELLULOSE FIBER 93% NON FIBROUS MATERIAL
18	32275950	Roof HVAC Ducts		
Layer 1:	Duct Mastic Black, Bituminous		None Detected	7% CELLULOSE FIBER 93% NON FIBROUS MATERIAL
19	32275951	Roof Center		
Layer 1:	Roof Mastic Black, Rubbery		None Detected	100% NON FIBROUS MATERIAL
20	32275952	Roof N		
Layer 1:	Roof Mastic Black, Rubbery		None Detected	100% NON FIBROUS MATERIAL
21	32275953	Roof S		
Layer 1:	Roof Mastic Black, Rubbery		None Detected	100% NON FIBROUS MATERIAL
22	32275954	Womens Bath Wall		
Layer 1:	Ceramic Tile Black/White, Hard		None Detected	100% NON FIBROUS MATERIAL
Layer 2:	Grout Brown, Granular		None Detected	100% NON FIBROUS MATERIAL
Layer 3:	Granular Material Gray, Granular		None Detected	100% NON FIBROUS MATERIAL

Total Number of Pages in Report: 14

Results relate only to samples as received by the laboratory.

Visit www.slabinc.com for current certifications.

Accrediting bodies: AIHA-LAP, LLC 100527, NVLAP 101150-0, VELAP/NELAC 460135 - Call laboratory for current national and state certifications.

Method reporting limit is 1%. PLM analysis is based on Visual Estimation and NESHAP recommends that any asbestos content less than 10 percent be verified by PLM Point Count or TEM Analysis. This report must not be reproduced except in full with the approval of the laboratory.

Customer Sample No.	SLI Sample/ Layer ID	Sample Identification/ Layer Name	PLM Analysis Results	
			Asbestos Fibers	Other Materials
23	32275955	Womens Bath Wall		
Layer 1:	Ceramic Tile White/Orange, Hard Sample not as described on COC.		None Detected	100% NON FIBROUS MATERIAL
Layer 2:	Grout Brown, Granular		None Detected	100% NON FIBROUS MATERIAL
Layer 3:	Granular Material Gray, Granular		None Detected	100% NON FIBROUS MATERIAL
24	32275956	Womens Bath Wall		
Layer 1:	Ceramic Tile White/Black, Hard		None Detected	100% NON FIBROUS MATERIAL
Layer 2:	Grout Brown, Granular		None Detected	100% NON FIBROUS MATERIAL
Layer 3:	Granular Material Gray, Granular		None Detected	100% NON FIBROUS MATERIAL
25	32275957	Womens Bath Floor		
Layer 1:	Ceramic Tile Tan, Hard		None Detected	100% NON FIBROUS MATERIAL
Layer 2:	Grout Brown, Granular		None Detected	100% NON FIBROUS MATERIAL
Layer 3:	Granular Material Gray, Granular		None Detected	100% NON FIBROUS MATERIAL
26	32275958	Womens Bath Floor		
Layer 1:	Ceramic Tile Tan, Hard		None Detected	100% NON FIBROUS MATERIAL
Layer 2:	Grout Brown, Granular		None Detected	100% NON FIBROUS MATERIAL
Layer 3:	Granular Material Gray, Granular		None Detected	100% NON FIBROUS MATERIAL

Total Number of Pages in Report: 14

Results relate only to samples as received by the laboratory.

Visit www.slabinc.com for current certifications.

Accrediting bodies: AIHA-LAP, LLC 100527, NVLAP 101150-0, VELAP/NELAC 460135 - Call laboratory for current national and state certifications.

Method reporting limit is 1%. PLM analysis is based on Visual Estimation and NESHAP recommends that any asbestos content less than 10 percent be verified by PLM Point Count or TEM Analysis. This report must not be reproduced except in full with the approval of the laboratory.

Customer Sample No.	SLI Sample/ Layer ID	Sample Identification/ Layer Name	PLM Analysis Results	
			Asbestos Fibers	Other Materials
27	32275959	Womens Bath Floor		
Layer 1:	Ceramic Tile Tan, Hard		None Detected	100% NON FIBROUS MATERIAL
Layer 2:	Grout Brown, Granular		None Detected	100% NON FIBROUS MATERIAL
Layer 3:	Granular Material Gray, Granular		None Detected	100% NON FIBROUS MATERIAL
28	32275960	Hall By Bath		
Layer 1:	Sheet Flooring Black/Green, Organically Bound		None Detected	100% NON FIBROUS MATERIAL
Layer 2:	Mastic Yellow, Soft		None Detected	2% CELLULOSE FIBER 98% NON FIBROUS MATERIAL
29	32275961	Hall By Bath		
Layer 1:	Flooring Tan, Hard		None Detected	100% NON FIBROUS MATERIAL
Layer 2:	Soft Material Brown, Soft		None Detected	2% CELLULOSE FIBER 98% NON FIBROUS MATERIAL
30	32275962	Hall By Bath		
Layer 1:	Baseboard Black, Rubbery		None Detected	100% NON FIBROUS MATERIAL
Layer 2:	Baseboard Mastic Tan, Brittle		None Detected	3% CELLULOSE FIBER 95% NON FIBROUS MATERIAL 2% WOLLASTONITE
31	32275963	Mens Bath Wall		
Layer 1:	Ceramic Tile Gray, Hard No Grout Found.		None Detected	100% NON FIBROUS MATERIAL
Layer 2:	Granular Material Gray, Granular		None Detected	100% NON FIBROUS MATERIAL

Total Number of Pages in Report: 14

Results relate only to samples as received by the laboratory.

Visit www.slabinc.com for current certifications.

Accrediting bodies: AIHA-LAP, LLC 100527, NVLAP 101150-0, VELAP/NELAC 460135 - Call laboratory for current national and state certifications.

Method reporting limit is 1%. PLM analysis is based on Visual Estimation and NESHAP recommends that any asbestos content less than 10 percent be verified by PLM Point Count or TEM Analysis. This report must not be reproduced except in full with the approval of the laboratory.

Customer Sample No.	SLI Sample/ Layer ID	Sample Identification/ Layer Name	PLM Analysis Results	
			Asbestos Fibers	Other Materials
31A	32275964	Mens Bath Wall		
Layer 1:	Ceramic Tile Gray, Hard No Grout Found.		None Detected	100% NON FIBROUS MATERIAL
Layer 2:	Granular Material Gray, Granular		None Detected	100% NON FIBROUS MATERIAL
32	32275965	Mens Bath Wall		
Layer 1:	Ceramic Tile Gray, Hard No Grout Found.		None Detected	100% NON FIBROUS MATERIAL
Layer 2:	Granular Material Gray, Granular		None Detected	100% NON FIBROUS MATERIAL
33	32275966	Mens Bath Floor		
Layer 1:	Ceramic Tile Gray, Hard		None Detected	100% NON FIBROUS MATERIAL
Layer 2:	Grout Black, Granular		None Detected	100% NON FIBROUS MATERIAL
Layer 3:	Granular Material Gray, Granular		None Detected	100% NON FIBROUS MATERIAL
34	32275967	Mens Bath Floor		
Layer 1:	Ceramic Tile Gray, Hard		None Detected	100% NON FIBROUS MATERIAL
Layer 2:	Grout Black, Granular		None Detected	100% NON FIBROUS MATERIAL
Layer 3:	Granular Material Gray, Granular		None Detected	100% NON FIBROUS MATERIAL
35	32275968	Mens Bath Floor		
Layer 1:	Ceramic Tile Gray, Hard		None Detected	100% NON FIBROUS MATERIAL

Total Number of Pages in Report: 14

Results relate only to samples as received by the laboratory.

Visit www.slabinc.com for current certifications.

Accrediting bodies: AIHA-LAP, LLC 100527, NVLAP 101150-0, VELAP/NELAC 460135 - Call laboratory for current national and state certifications.

Method reporting limit is 1%. PLM analysis is based on Visual Estimation and NESHAP recommends that any asbestos content less than 10 percent be verified by PLM Point Count or TEM Analysis. This report must not be reproduced except in full with the approval of the laboratory.

Customer Sample No.	SLI Sample/ Layer ID	Sample Identification/ Layer Name	PLM Analysis Results	
			Asbestos Fibers	Other Materials
Layer 2:	Grout Black, Granular		None Detected	100% NON FIBROUS MATERIAL
Layer 3:	Granular Material Gray, Granular		None Detected	100% NON FIBROUS MATERIAL
36	32275969	Hall By Mens		
Layer 1:	Sheet Flooring Dark Green, Organically Bound		None Detected	100% NON FIBROUS MATERIAL
Layer 2:	Mastic Yellow, Soft		None Detected	2% CELLULOSE FIBER 98% NON FIBROUS MATERIAL
37	32275970	Hall By Mens		
Layer 1:	Baseboard Black, Rubbery		None Detected	100% NON FIBROUS MATERIAL
Layer 2:	Baseboard Mastic Tan, Soft		None Detected	2% CELLULOSE FIBER 98% NON FIBROUS MATERIAL
38	32275971	Mens Bath		
Layer 1:	Mastic Yellow, Soft		None Detected	3% CELLULOSE FIBER 97% NON FIBROUS MATERIAL
39	32275972	Mens Bath		
Layer 1:	Mastic Yellow, Soft		None Detected	3% CELLULOSE FIBER 97% NON FIBROUS MATERIAL
40	32275973	Mens Bath		
Layer 1:	Mastic Yellow, Soft		None Detected	4% CELLULOSE FIBER 96% NON FIBROUS MATERIAL
41	32275974	Center Office Front		
Layer 1:	Baseboard Black, Rubbery		None Detected	100% NON FIBROUS MATERIAL
Layer 2:	Baseboard Mastic Tan, Soft		None Detected	2% CELLULOSE FIBER 98% NON FIBROUS MATERIAL

Total Number of Pages in Report: 14

Results relate only to samples as received by the laboratory.

Visit www.slabinc.com for current certifications.

Accrediting bodies: AIHA-LAP, LLC 100527, NVLAP 101150-0, VELAP/NELAC 460135 - Call laboratory for current national and state certifications.

Method reporting limit is 1%. PLM analysis is based on Visual Estimation and NESHAP recommends that any asbestos content less than 10 percent be verified by PLM Point Count or TEM Analysis. This report must not be reproduced except in full with the approval of the laboratory.

Customer Sample No.	SLI Sample/ Layer ID	Sample Identification/ Layer Name	PLM Analysis Results	
			Asbestos Fibers	Other Materials
42	32275975	Center Office Front		
Layer 1:	Sheet Flooring Dark Green, Organically Bound		None Detected	100% NON FIBROUS MATERIAL
Layer 2:	Mastic Yellow, Soft		None Detected	2% CELLULOSE FIBER 98% NON FIBROUS MATERIAL
43	32275976	Show Room E		
Layer 1:	Flooring Tan, Hard		None Detected	100% NON FIBROUS MATERIAL
44	32275977	Show Room W		
Layer 1:	Flooring Tan, Hard		None Detected	100% NON FIBROUS MATERIAL
45	32275978	Show Room W		
Layer 1:	Mastic Yellow, Brittle		None Detected	100% NON FIBROUS MATERIAL
46	32275979	Show Room NW		
Layer 1:	Mastic Yellow, Brittle		None Detected	100% NON FIBROUS MATERIAL
Layer 2:	Leveling Compound White, Granular		None Detected	100% NON FIBROUS MATERIAL
47	32275980	Show Room NW		
Layer 1:	Mastic Yellow, Brittle		None Detected	100% NON FIBROUS MATERIAL
Layer 2:	Leveling Compound White, Granular		None Detected	100% NON FIBROUS MATERIAL
48	32275981	Show Room NW		
Layer 1:	Mastic Yellow, Brittle		None Detected	100% NON FIBROUS MATERIAL

Total Number of Pages in Report: 14

Results relate only to samples as received by the laboratory.

Visit www.slabinc.com for current certifications.

Accrediting bodies: AIHA-LAP, LLC 100527, NVLAP 101150-0, VELAP/NELAC 460135 - Call laboratory for current national and state certifications.

Method reporting limit is 1%. PLM analysis is based on Visual Estimation and NESHAP recommends that any asbestos content less than 10 percent be verified by PLM Point Count or TEM Analysis. This report must not be reproduced except in full with the approval of the laboratory.

Customer Sample No.	SLI Sample/ Layer ID	Sample Identification/ Layer Name	PLM Analysis Results	
			Asbestos Fibers	Other Materials
Layer 2:	Leveling Compound White, Granular		None Detected	100% NON FIBROUS MATERIAL
49	32275982	Show Room W Side		
Layer 1:	Sheet Flooring White, Org.Bound/Fibrous		15% CHRYSOTILE	30% CELLULOSE FIBER 55% NON FIBROUS MATERIAL
	Sample was inhomogenous, subsamples of each component were analyzed separately.			
50	32275983	Show Room W Side		
Layer 1:	Sheet Flooring White, Org.Bound/Fibrous		15% CHRYSOTILE	30% CELLULOSE FIBER 55% NON FIBROUS MATERIAL
	Sample was inhomogenous, subsamples of each component were analyzed separately.			
51	32275984	Mens Bath		
Layer 1:	Mastic Yellow, Soft		None Detected	3% CELLULOSE FIBER 97% NON FIBROUS MATERIAL
52	32275985	S At Stairs		
Layer 1:	Granular Material White, Granular		None Detected	100% NON FIBROUS MATERIAL
53	32275986	E Wall		
Layer 1:	Granular Material White, Granular		None Detected	100% NON FIBROUS MATERIAL
54	32275987	SE Office		
Layer 1:	Granular Material White, Granular		None Detected	100% NON FIBROUS MATERIAL
55	32275988	SE Office		
Layer 1:	Mastic Yellow, Soft		None Detected	100% NON FIBROUS MATERIAL
Layer 2:	Floor Tile Off White, Organically Bound		None Detected	100% NON FIBROUS MATERIAL

Total Number of Pages in Report: 14

Results relate only to samples as received by the laboratory.

Visit www.slabinc.com for current certifications.

Accrediting bodies: AIHA-LAP, LLC 100527, NVLAP 101150-0, VELAP/NELAC 460135 - Call laboratory for current national and state certifications.

Method reporting limit is 1%. PLM analysis is based on Visual Estimation and NESHP recommends that any asbestos content less than 10 percent be verified by PLM Point Count or TEM Analysis. This report must not be reproduced except in full with the approval of the laboratory.

Customer Sample No.	SLI Sample/ Layer ID	Sample Identification/ Layer Name	PLM Analysis Results	
			Asbestos Fibers	Other Materials
Layer 3:	Mastic Black, Bituminous		None Detected	2% CELLULOSE FIBER 98% NON FIBROUS MATERIAL
56	32275989	By Reception		
Layer 1:	Mastic Yellow, Soft		None Detected	2% CELLULOSE FIBER 98% NON FIBROUS MATERIAL
Layer 2:	Floor Tile Off White, Organically Bound		None Detected	100% NON FIBROUS MATERIAL
Layer 3:	Mastic Black, Bituminous		None Detected	2% CELLULOSE FIBER 98% NON FIBROUS MATERIAL
57	32275990	Large E Room		
Layer 1:	Mastic Yellow, Soft		None Detected	100% NON FIBROUS MATERIAL
Layer 2:	Floor Tile Off White, Organically Bound		None Detected	100% NON FIBROUS MATERIAL
Layer 3:	Mastic Black, Bituminous		None Detected	2% CELLULOSE FIBER 98% NON FIBROUS MATERIAL
58	32275991	S Center Office		
Layer 1:	Concrete Gray, Hard		None Detected	100% NON FIBROUS MATERIAL
Layer 2:	Mastic Yellow, Soft		None Detected	3% CELLULOSE FIBER 97% NON FIBROUS MATERIAL
59	32275992	S Center Office		
Layer 1:	Concrete Gray, Hard		None Detected	100% NON FIBROUS MATERIAL
Layer 2:	Mastic Yellow, Soft		None Detected	3% CELLULOSE FIBER 97% NON FIBROUS MATERIAL

Total Number of Pages in Report: 14

Results relate only to samples as received by the laboratory.

Visit www.slabinc.com for current certifications.

Accrediting bodies: AIHA-LAP, LLC 100527, NVLAP 101150-0, VELAP/NELAC 460135 - Call laboratory for current national and state certifications.

Method reporting limit is 1%. PLM analysis is based on Visual Estimation and NESHAP recommends that any asbestos content less than 10 percent be verified by PLM Point Count or TEM Analysis. This report must not be reproduced except in full with the approval of the laboratory.

Customer Sample No.	SLI Sample/ Layer ID	Sample Identification/ Layer Name	PLM Analysis Results	
			Asbestos Fibers	Other Materials
60	32275993	TV Room S		
Layer 1:	Spray On Ceiling White, Granular		3% CHRYSOTILE	97% NON FIBROUS MATERIAL
61	32275994	E Room Large		
Layer 1:	Spray On Ceiling White, Granular		3% CHRYSOTILE	97% NON FIBROUS MATERIAL
62	32275995	SE Corner Room		
Layer 1:	Spray On Ceiling White, Granular		2% CHRYSOTILE	98% NON FIBROUS MATERIAL
63	32275996	Center Room		
Layer 1:	Spray On Ceiling White, Granular		2% CHRYSOTILE	98% NON FIBROUS MATERIAL
64	32275997	Center W Room		
Layer 1:	Spray On Ceiling White, Granular		3% CHRYSOTILE	97% NON FIBROUS MATERIAL
65	32275998	Hall By Reception		
Layer 1:	Wall Texture White, Granular		None Detected	100% NON FIBROUS MATERIAL
Layer 2:	Powdery Material White, Powdery		None Detected	2% CELLULOSE FIBER 98% NON FIBROUS MATERIAL
66	32275999	W Front Hall		
Layer 1:	Wall Texture White, Granular		None Detected	100% NON FIBROUS MATERIAL
Layer 2:	Powdery Material White, Powdery		None Detected	2% CELLULOSE FIBER 98% NON FIBROUS MATERIAL
67	32276000	Hall By Bath		
Layer 1:	Wall Texture White, Granular		None Detected	100% NON FIBROUS MATERIAL

Total Number of Pages in Report: 14

Results relate only to samples as received by the laboratory.

Visit www.slabinc.com for current certifications.

Accrediting bodies: AIHA-LAP, LLC 100527, NVLAP 101150-0, VELAP/NELAC 460135 - Call laboratory for current national and state certifications.

Method reporting limit is 1%. PLM analysis is based on Visual Estimation and NESHAP recommends that any asbestos content less than 10 percent be verified by PLM Point Count or TEM Analysis. This report must not be reproduced except in full with the approval of the laboratory.

Customer Sample No.	SLI Sample/ Layer ID	Sample Identification/ Layer Name	PLM Analysis Results	
			Asbestos Fibers	Other Materials
Layer 2:	Powdery Material Brown, Powdery		None Detected	3% CELLULOSE FIBER 97% NON FIBROUS MATERIAL
68	32276001	S Side Room		
Layer 1:	Wall Texture White, Granular		None Detected	100% NON FIBROUS MATERIAL
Layer 2:	Powdery Material White, Powdery		None Detected	2% CELLULOSE FIBER 98% NON FIBROUS MATERIAL
69	32276002	Hall By S Entry Door		
Layer 1:	Wall Texture White, Granular		None Detected	100% NON FIBROUS MATERIAL
Layer 2:	Powdery Material White, Powdery		None Detected	2% CELLULOSE FIBER 98% NON FIBROUS MATERIAL
70	32276003	NW Room Small		
Layer 1:	Wall Texture White, Granular		None Detected	100% NON FIBROUS MATERIAL
Layer 2:	Powdery Material White, Powdery		None Detected	2% CELLULOSE FIBER 98% NON FIBROUS MATERIAL
71	32276004	Small Room By W Hall		
Layer 1:	Wall Texture White, Granular		None Detected	100% NON FIBROUS MATERIAL
Layer 2:	Powdery Material White, Powdery		None Detected	2% CELLULOSE FIBER 98% NON FIBROUS MATERIAL
72	32276005	SW Large Room		
Layer 1:	Wall Texture White, Granular		None Detected	100% NON FIBROUS MATERIAL
Layer 2:	Powdery Material White, Powdery		None Detected	2% CELLULOSE FIBER 98% NON FIBROUS MATERIAL

Total Number of Pages in Report: 14

Results relate only to samples as received by the laboratory.

Visit www.slabinc.com for current certifications.

Accrediting bodies: AIHA-LAP, LLC 100527, NVLAP 101150-0, VELAP/NELAC 460135 - Call laboratory for current national and state certifications.

Method reporting limit is 1%. PLM analysis is based on Visual Estimation and NESHAP recommends that any asbestos content less than 10 percent be verified by PLM Point Count or TEM Analysis. This report must not be reproduced except in full with the approval of the laboratory.

Customer Sample No.	SLI Sample/ Layer ID	Sample Identification/ Layer Name	PLM Analysis Results	
			Asbestos Fibers	Other Materials
73	32276006	SW Large Room		
Layer 1:	Wall Texture White, Granular		None Detected	100% NON FIBROUS MATERIAL
Layer 2:	Granular Material Beige, Granular		2% CHRYSOTILE	98% NON FIBROUS MATERIAL
74	32276007	Reception		
Layer 1:	Wall Texture White, Granular		None Detected	100% NON FIBROUS MATERIAL
Layer 2:	Powdery Material White, Powdery		None Detected	2% CELLULOSE FIBER 98% NON FIBROUS MATERIAL
75	32276008	SW Large Room		
Layer 1:	Wall Texture White, Granular		None Detected	100% NON FIBROUS MATERIAL
Layer 2:	Powdery Material White, Powdery		None Detected	2% CELLULOSE FIBER 98% NON FIBROUS MATERIAL
76	32276009	Front NW Small Room		
Layer 1:	Wall Texture White, Granular		None Detected	100% NON FIBROUS MATERIAL
Layer 2:	Powdery Material White, Powdery		None Detected	2% CELLULOSE FIBER 98% NON FIBROUS MATERIAL
77	32276010	SW Large Room		
Layer 1:	Wall Texture White, Granular		None Detected	100% NON FIBROUS MATERIAL
Layer 2:	Granular Material Off White, Granular		None Detected	2% CELLULOSE FIBER 98% NON FIBROUS MATERIAL
78	32276011	Janitor Closet S		
Layer 1:	Wallboard White, Powdery		None Detected	3% CELLULOSE FIBER 97% NON FIBROUS MATERIAL

Total Number of Pages in Report: 14

Results relate only to samples as received by the laboratory.

Visit www.slabinc.com for current certifications.

Accrediting bodies: AIHA-LAP, LLC 100527, NVLAP 101150-0, VELAP/NELAC 460135 - Call laboratory for current national and state certifications.

Method reporting limit is 1%. PLM analysis is based on Visual Estimation and NESHAP recommends that any asbestos content less than 10 percent be verified by PLM Point Count or TEM Analysis. This report must not be reproduced except in full with the approval of the laboratory.

Customer Sample No.	SLI Sample/ Layer ID	Sample Identification/ Layer Name	PLM Analysis Results	
			Asbestos Fibers	Other Materials
Layer 2:	Joint Compound White, Granular		None Detected	100% NON FIBROUS MATERIAL
79	32276012	Womens Bath		
Layer 1:	Wallboard White, Powdery		None Detected	2% CELLULOSE FIBER 98% NON FIBROUS MATERIAL
Layer 2:	Joint Compound White, Granular		None Detected	100% NON FIBROUS MATERIAL
80	32276013	Center Hall By Photos		
Layer 1:	Wallboard White, Powdery		None Detected	2% CELLULOSE FIBER 98% NON FIBROUS MATERIAL
Layer 2:	Joint Compound White, Granular		None Detected	100% NON FIBROUS MATERIAL
81	32276014	Storage Room Center		
Layer 1:	Wallboard White, Powdery		None Detected	2% CELLULOSE FIBER 98% NON FIBROUS MATERIAL
Layer 2:	Joint Compound White, Granular		None Detected	100% NON FIBROUS MATERIAL
82	32276015	Above Ceiling At Hatch		
Layer 1:	Wallboard White, Powdery		None Detected	2% CELLULOSE FIBER 98% NON FIBROUS MATERIAL
Layer 2:	Joint Compound White, Granular		None Detected	100% NON FIBROUS MATERIAL


Analyst: **Riham Hashim**

Reviewed By: **Reel Hashim, Analyst****Total Number of Pages in Report: 14**

Results relate only to samples as received by the laboratory.

Visit www.slabinc.com for current certifications.

Accrediting bodies: AIHA-LAP, LLC 100527, NVLAP 101150-0, VELAP/NELAC 460135 - Call laboratory for current national and state certifications.

Method reporting limit is 1%. PLM analysis is based on Visual Estimation and NESHAP recommends that any asbestos content less than 10 percent be verified by PLM Point Count or TEM Analysis. This report must not be reproduced except in full with the approval of the laboratory.

193-14-2644

CLIENT

BAYWEST Development
2 Henry Adams Street
450
San Francisco
CA

JOBSITE

Crown Chevy Dealership
7544 Dublin Boulevard
Dublin
CA94103
94568

KELCO Services JOB# 1407-16

LAB LOGIN #

COLLECTED BY: DAVID GAYTONCOLLECTED DATE: 8-1-14

TURN AROUND TIME: Normal TAT 4 8 24 48 5-DAY

RESULTS
NEEDED BY

CIRCLE TYPE OF BULK ANALYSIS

PLM LEAD PAINT LEAD WIPE NON VIABLE MOLD VIABLE MOLD ECOLI OTHER

SAMPLES REC'D _____ ANALYZE TO FIRST POSITIVE YES NO

REPORT RESULTS TO
PROJECT MANAGER

Tim Cannard

NOTES & COMMENTS:

PLEASE TITLE LAB REPORT "CHEVY BUILDING"

CHAIN OF CUSTODY & SAMPLE SUBMITAL FORM

PAGE 1 OF 1

KELCO Services JOB# 1407-16
Crown Chevy Dealership

FIELD NUMBER	LOCATION (bldg, rm#, area)	COLOR	MATERIAL or SUBSTRATE (ft w/ size, mastic, etc.)	NOTES: like condition, damage, quantity, inside what beneath what? direction in building (N, S, E, W) etc.)
1	EXTENSIVE NW WALL	WHITE	STUCCO WALL	
2	NORTH SIDE		CONCRETE FOUNDATION (SLAB)	
3	NW CORNER	BLACK	ASPHALT PAVEMENT	
4	WEST SIDE	WHITE	CONCRETE FOUNDATION (SLAB)	
5	WEST WALL		STUCCO WALL	
6	SE CORNER			
7	SE AREA	BLACK	ASPHALT PAVEMENT	
8	NE CORNER	WHITE	CONCRETE FOUNDATION (SLAB)	
9	NE AREA	BLACK	ASPHALT PAVEMENT	

RELEASED BY

DATE

TIME

RECEIVED BY

DATE

TIME

0 1/11

2014-8-5-14

955

12 7517 R

CHEVY BUILDING

FIELD NUMBER	LOCATION (bldg, rm#, area)	COLOR	MATERIAL or SUBSTRATE (ft w/ size, mastic, tile, etc.)	NOTES: Like condition, damage, quantity, inside what, beneath what? direction in building (N, S, E, W) etc.)
10	INT. FRONT SHOW ROOM	WHITE	2'x4' CEILING TILES	
11				
12				
13	POOF CENTER HALL MGR		SPRAY-ON FOAM ROOF	500 LB
14	POOF			
15				
16	POOF HALL DOCT	BLACK	DOCT MASTIC	
17				
18				
19	POOF CENTER		POOF PENETRATION MASTIC	
20	POOF			
21	POOF			
22	WOMENS BATH W/HAL	BLACK WHITE ONYX	4"x4" CERAMIC TILES	GROUT
23				
24				
25	FLOOR	TAN	12"x12" CERAMIC TILE, GROUT & THIN SET	
26				
27				

RELEASED BY	DATE	TIME	RECEIVED BY	DATE	TIME
<i>[Signature]</i>	8-1-14		<i>[Signature]</i>	8-5-14	955

14 7517 R

CHAIN OF CUSTODY & SAMPLE SUBMITAL FORM

PAGE 3 OF 6

KELCO Services JOB# 1407-16

CHEVY BUILDING

FIELD NUMBER	LOCATION (bldg, rm#, area)	COLOR	MATERIAL or SUBSTRATE (ft w size, mastic, flc, etc.)	NOTES: Like condition, damage, quantity, inside what, beneath what? direction in building (N,S,E,W) etc.)
28	HALL BY BATH	DARK GREEN	STREET FLOOR + MASTIC	
29		TAN	STONE FLOOR	
30		TAN	BASE BOARD MASTIC	
31	MENS PARTIAL WALL	GRAY	6"X6" CERAMIC TILE WALL, GROUT + TILE SET	
31A				
32				
33		FLOOR	FLOOR	
34				
35				
36	HALL BY MENS	DARK GREEN	STREET FLOOR + MASTIC	
37		TAN	BASE BOARD MASTIC	
38	MENS BATH	YELLOW	WAINSCOT MASTIC ON WALL	
39				
40				
41	LOBBY OFFICE FRONT	TAN	BASE BOARD MASTIC	
42		DK GREEN	SITTING FLOOR + MASTIC + BACKING	
43	SHOW ROOM	TAN	STONE FLOOR	
44		WGS +		

RELEASED BY

DATE

TIME

RECEIVED BY

DATE

TIME

8-5-14

955

JSM R

CHEVY Buick Inc

CHAIN OF CUSTODY & SAMPLE SUBMITAL FORM

PAGE 4 OF 6

KELCO Services JOB#: 1407-16

Crown Chevy Dealership

FIELD NUMBER	LOCATION (bldg, rm#, area)	COLOR	MATERIAL or SUBSTRATE (ft w/ size, mastic, etc.)	NOTES: Like condition, damage, quantity, inside what, beneath what? direction in building (N,S,E,W) etc.)
45	SHOW ROOM WEST	Yellow	Carpet mastic	
46	NW			+ Leveling compound
47				
48				
49	WEST SING	White	SHRIFT Floor + Polishing	15 d
50				
51	MENS BATH	Yellow	Minion mastic	
52	SOUTH AT STAIRS	White	Cement Block walls	
53	EAST WALL			
54	SE OFFICE			
55		off-white	12X12 Floor Tile + Black mastic	
56	BY Reception			
57	LARGE EAST ROOM			
58	SOUTH CENTRAL OFFICE	Gray	12"X12" concrete	Floor + mastic
59				
60	TV Room SOUTH	White	SPRAYON Ceiling	
61	EAST ROOM LARGE			
62	SE CORNER ROOM			

RELEASED BY	DATE	TIME	RECEIVED BY	DATE	TIME
			SA	8-5-14	9:55

7517 R

CHERRY BUILDING

FIELD NUMBER	LOCATION (ddg, mth, area)	COLOR	MATERIAL or SUBSTRATE (ft w size, mastic, jfc, etc.)	Crown Chevy Dealership	NOTES: Like condition, damage, quantity, inside what, beneath what? direction in building (N, S, E, W) etc.)
63	CENTEN ROOM	White	SPRAY-ON CRILING		
64	CENTEN WEST ROOM				BY HUTCH
65	HALL BY RECEPTION		WALL TEXTURE		
66	WEST FRONT HALL				
67	HALL BY BATH				
68	SOUTH / GINE ROOM				
69	HALL BY SOUTH ENTRY				
70	NW ROOM SMALL		WALL TEXTURE		ROUGH LINES
71	SMALL ROOM ^{BY} WEST HALL		ROUGH WALL TEXTURE		
72	SW LARGE ROOM		ROUGH WALL TEXTURE		
73					
74	RECEPTION		ROUGH LINES WALL TEXTURE		
75	SW LARGE ROOM		ROUGH WALL TEXTURE		
76	FRONT NW SMALL ROOM		ROUGH LINES WALL TEXTURE		
77	SW LARGE ROOM		ROUGH WALL TEXTURE		
78	TRAILER CLUSTER SOUTH		WALL BOARD / JOINT COMPOUND / WB/JS		
79	WOMEN'S BATH		WB/JS		
80	CENTEN HALL BY		WB/JS		

PHOTOS

RELEASED BY	DATE	TIME	RECEIVED BY	DATE	TIME
			RECEIVED BY	8-5-14	9:55

Q 7517 R

CHERY Building

CHAIN OF CUSTODY & SAMPLE SUBMITAL FORM

PAGE 6 OF 6

KELCO Services JOB#: 1407-16

Crown Chevy Dealership

FIELD NUMBER	LOCATION (bldg, rm#, area)	COLOR	MATERIAL or SUBSTRATE (ft w size, mastic, etc.)	NOTES: Like condition, damage, quantity, inside what, beneath what? direction in building (N,S,E,W) etc.)
<i>01</i>	<i>STORAGE ROOM</i>	<i>WHITE</i>	<i>WALL BOARD/JOINT</i>	<i>compound (WB/JS)</i>
<i>02</i>	<i>above ceiling RT HALL</i>		<i>WB/JS</i>	
<i>03</i>				
<i>04</i>				
<i>05</i>				
<i>06</i>				
<i>07</i>				
<i>08</i>				
<i>09</i>				
<i>10</i>				
<i>11</i>				
<i>12</i>				
<i>13</i>				
<i>14</i>				
<i>15</i>				
<i>16</i>				
<i>17</i>				
<i>18</i>				
<i>19</i>				
<i>20</i>				
<i>21</i>				
<i>22</i>				
<i>23</i>				
<i>24</i>				
<i>25</i>				
<i>26</i>				
<i>27</i>				
<i>28</i>				
<i>29</i>				
<i>30</i>				
<i>31</i>				
<i>32</i>				
<i>33</i>				
<i>34</i>				
<i>35</i>				
<i>36</i>				
<i>37</i>				
<i>38</i>				
<i>39</i>				
<i>40</i>				
<i>41</i>				
<i>42</i>				
<i>43</i>				
<i>44</i>				
<i>45</i>				
<i>46</i>				
<i>47</i>				
<i>48</i>				
<i>49</i>				
<i>50</i>				
<i>51</i>				
<i>52</i>				
<i>53</i>				
<i>54</i>				
<i>55</i>				
<i>56</i>				
<i>57</i>				
<i>58</i>				
<i>59</i>				
<i>60</i>				
<i>61</i>				
<i>62</i>				
<i>63</i>				
<i>64</i>				
<i>65</i>				
<i>66</i>				
<i>67</i>				
<i>68</i>				
<i>69</i>				
<i>70</i>				
<i>71</i>				
<i>72</i>				
<i>73</i>				
<i>74</i>				
<i>75</i>				
<i>76</i>				
<i>77</i>				
<i>78</i>				
<i>79</i>				
<i>80</i>				
<i>81</i>				
<i>82</i>				
<i>83</i>				
<i>84</i>				
<i>85</i>				
<i>86</i>				
<i>87</i>				
<i>88</i>				
<i>89</i>				
<i>90</i>				
<i>91</i>				
<i>92</i>				
<i>93</i>				
<i>94</i>				
<i>95</i>				
<i>96</i>				
<i>97</i>				
<i>98</i>				
<i>99</i>				
<i>100</i>				

WorkOrderKey
V : 1020 \ 1020373

RELEASED BY <i>[Signature]</i>	DATE <i>8-4-14</i>	TIME	RECEIVED BY <i>[Signature]</i>	DATE <i>8-5-14</i>	TIME <i>9:55</i>
-----------------------------------	-----------------------	------	-----------------------------------	-----------------------	---------------------

7517 R

SCHNEIDER LABORATORIES GLOBAL

INCORPORATED

2512 W. Cary Street • Richmond, Virginia • 23220-5117
804-353-6778 • 800-785-LABS (5227) • (FAX) 804-359-1475

Over 25 Years of Excellence in Service and Technology

LABORATORY ANALYSIS REPORT

Asbestos Identification by EPA Method¹ 600/R-93/116; EPA 600/M4-82-020

ACCOUNT #: 193-14-2651
CUSTOMER: KELLCO SERVICES INC
ADDRESS: 3137 DIABLO AVENUE
HAYWARD, CA 94545-2701

DATE COLLECTED: 8/5/2014
DATE RECEIVED: 8/6/2014
DATE ANALYZED: 8/6/2014
DATE REPORTED: 8/6/2014

PROJECT NAME: 7544 Dublin Blvd

JOB LOCATION: Dublin, CA

PROJECT NO.: 1407-16

PO NO.:

SampleType: Bulk

Customer Sample No.	SLI Sample/ Layer ID	Sample Identification/ Layer Name	PLM Analysis Results	
			Asbestos Fibers	Other Materials
41	32276773	Parts NE Room		
Layer 1:	Wall Texture White, Granular		None Detected	100% NON FIBROUS MATERIAL
Layer 2:	Powdery Material White, Powdery		None Detected	2% CELLULOSE FIBER 98% NON FIBROUS MATERIAL
42	32276774	Parts NE Room		
Layer 1:	Ceiling Tile White, Fibrous		None Detected	80% CELLULOSE FIBER 10% MINERAL/GLASS WOOL 10% NON FIBROUS MATERIAL
43	32276775	Parts Center North		
Layer 1:	Ceramic Tile Black, Hard		None Detected	100% NON FIBROUS MATERIAL
Layer 2:	Grout Gray, Granular		None Detected	100% NON FIBROUS MATERIAL
Layer 3:	Granular Material Dark Gray, Granular		None Detected	100% NON FIBROUS MATERIAL

Total Number of Pages in Report: 6

Results relate only to samples as received by the laboratory.

Visit www.slabin.com for current certifications.

Accrediting bodies: AIHA-LAP, LLC 100527, NVLAP 101150-0, VELAP/NELAC 460135 - Call laboratory for current national and state certifications.

Method reporting limit is 1%. PLM analysis is based on Visual Estimation and NESHAP recommends that any asbestos content less than 10 percent be verified by PLM Point Count or TEM Analysis. This report must not be reproduced except in full with the approval of the laboratory.

Customer Sample No.	SLI Sample/ Layer ID	Sample Identification/ Layer Name	PLM Analysis Results	
			Asbestos Fibers	Other Materials
44	32276776	Parts Center North		
Layer 1:	Ceramic Tile Black, Hard		None Detected	100% NON FIBROUS MATERIAL
Layer 2:	Grout Gray, Granular		None Detected	100% NON FIBROUS MATERIAL
Layer 3:	Granular Material Dark Gray, Granular		None Detected	100% NON FIBROUS MATERIAL
45	32276777	Parts Center North		
Layer 1:	Ceramic Tile Black, Hard		None Detected	100% NON FIBROUS MATERIAL
Layer 2:	Grout Gray, Granular		None Detected	100% NON FIBROUS MATERIAL
Layer 3:	Granular Material Dark Gray, Granular		None Detected	100% NON FIBROUS MATERIAL
46	32276778	Parts Center North		
Layer 1:	Ceiling Tile White, Fibrous		None Detected	75% CELLULOSE FIBER 15% MINERAL/GLASS WOOL 10% NON FIBROUS MATERIAL
47	32276779	Parts NW Room		
Layer 1:	Wall Texture White, Granular		None Detected	100% NON FIBROUS MATERIAL
Layer 2:	Powdery Material White, Powdery		None Detected	3% CELLULOSE FIBER 97% NON FIBROUS MATERIAL
48	32276780	Parts NE Room		
Layer 1:	Flooring Gray, Organically Bound		None Detected	100% NON FIBROUS MATERIAL
Layer 2:	Mastic Yellow, Soft		None Detected	100% NON FIBROUS MATERIAL

Total Number of Pages in Report: 6

Results relate only to samples as received by the laboratory.

Visit www.slabin.com for current certifications.

Accrediting bodies: AIHA-LAP, LLC 100527, NVLAP 101150-0, VELAP/NELAC 460135 - Call laboratory for current national and state certifications.

Method reporting limit is 1%. PLM analysis is based on Visual Estimation and NESHAP recommends that any asbestos content less than 10 percent be verified by PLM Point Count or TEM Analysis. This report must not be reproduced except in full with the approval of the laboratory.

Customer Sample No.	SLI Sample/ Layer ID	Sample Identification/ Layer Name	PLM Analysis Results	
			Asbestos Fibers	Other Materials
Layer 3:	Flooring Beige, Organically Bound		None Detected	100% NON FIBROUS MATERIAL
Layer 4:	Mastics Black/Yellow, Bituminous/Soft Unable to separate individual layers.		None Detected	2% CELLULOSE FIBER 98% NON FIBROUS MATERIAL
Layer 5:	Flooring Beige, Organically Bound		3% CHRYSOTILE	97% NON FIBROUS MATERIAL
Layer 6:	Backing/Mastic Gray/Yellow, Fibrous/Brittle Unable to separate individual layers.		25% CHRYSOTILE	60% CELLULOSE FIBER 15% NON FIBROUS MATERIAL
49	32276781	Parts NE Room		
Layer 1:	Flooring Gray, Organically Bound		None Detected	100% NON FIBROUS MATERIAL
Layer 2:	Mastic Yellow, Soft		None Detected	100% NON FIBROUS MATERIAL
Layer 3:	Flooring Beige, Organically Bound		None Detected	100% NON FIBROUS MATERIAL
Layer 4:	Mastics Black/Yellow, Bituminous/Soft Unable to separate individual layers.		None Detected	4% CELLULOSE FIBER 96% NON FIBROUS MATERIAL
Layer 5:	Flooring Beige, Organically Bound		5% CHRYSOTILE	95% NON FIBROUS MATERIAL
Layer 6:	Backing/Mastic Gray/Yellow, Fibrous/Brittle Unable to separate individual layers.		20% CHRYSOTILE	60% CELLULOSE FIBER 20% NON FIBROUS MATERIAL
50	32276782	Parts NE Room		
Layer 1:	Flooring Gray, Organically Bound		None Detected	100% NON FIBROUS MATERIAL
Layer 2:	Mastic Yellow, Soft		None Detected	100% NON FIBROUS MATERIAL

Total Number of Pages in Report: 6

Results relate only to samples as received by the laboratory.

Visit www.slabin.com for current certifications.

Accrediting bodies: AIHA-LAP, LLC 100527, NVLAP 101150-0, VELAP/NELAC 460135 - Call laboratory for current national and state certifications.

Method reporting limit is 1%. PLM analysis is based on Visual Estimation and NESHAP recommends that any asbestos content less than 10 percent be verified by PLM Point Count or TEM Analysis. This report must not be reproduced except in full with the approval of the laboratory.

Customer Sample No.	SLI Sample/ Layer ID	Sample Identification/ Layer Name	PLM Analysis Results	
			Asbestos Fibers	Other Materials
Layer 3:	Flooring Beige, Organically Bound		None Detected	100% NON FIBROUS MATERIAL
Layer 4:	Mastics Black/Yellow, Bituminous/Soft Unable to separate individual layers.		None Detected	2% CELLULOSE FIBER 98% NON FIBROUS MATERIAL
Layer 5:	Flooring Beige, Organically Bound		6% CHRYSOTILE	94% NON FIBROUS MATERIAL
Layer 6:	Backing/Mastic Gray/Yellow, Fibrous/Brittle Unable to separate individual layers.		15% CHRYSOTILE	65% CELLULOSE FIBER 20% NON FIBROUS MATERIAL
51	32276783	Parts South Wall		
Layer 1:	Wallboard White, Powdery		None Detected	3% CELLULOSE FIBER 97% NON FIBROUS MATERIAL
Layer 2:	Joint Compound White, Granular		2% CHRYSOTILE	98% NON FIBROUS MATERIAL
52	32276784	Parts SE Room		
Layer 1:	Carpet Mastic Yellow, Soft		None Detected	2% CELLULOSE FIBER 98% NON FIBROUS MATERIAL
53	32276785	Parts SE Room		
Layer 1:	Baseboard Black, Rubbery		None Detected	100% NON FIBROUS MATERIAL
Layer 2:	Baseboard Mastic Tan, Soft		None Detected	3% CELLULOSE FIBER 97% NON FIBROUS MATERIAL
54	32276786	Parts SE Room		
Layer 1:	Wall Texture White, Granular		None Detected	100% NON FIBROUS MATERIAL
Layer 2:	Powdery Material White, Powdery		None Detected	2% CELLULOSE FIBER 98% NON FIBROUS MATERIAL

Total Number of Pages in Report: 6

Results relate only to samples as received by the laboratory.

Visit www.slabinc.com for current certifications.

Accrediting bodies: AIHA-LAP, LLC 100527, NVLAP 101150-0, VELAP/NELAC 460135 - Call laboratory for current national and state certifications.

Method reporting limit is 1%. PLM analysis is based on Visual Estimation and NESHAP recommends that any asbestos content less than 10 percent be verified by PLM Point Count or TEM Analysis. This report must not be reproduced except in full with the approval of the laboratory.

Customer Sample No.	SLI Sample/ Layer ID	Sample Identification/ Layer Name	PLM Analysis Results	
			Asbestos Fibers	Other Materials
55	32276787	Parts NW Room		
Layer 1:	Wallboard White, Powdery		None Detected	3% CELLULOSE FIBER 97% NON FIBROUS MATERIAL
Layer 2:	Joint Compound White, Granular		None Detected	4% MINERAL/GLASS WOOL 96% NON FIBROUS MATERIAL
56	32276788	Parts NW Room		
Layer 1:	Baseboard Mastic Tan, Soft		None Detected	98% NON FIBROUS MATERIAL 2% SYNTHETIC FIBER
57	32276789	Parts Bath		
Layer 1:	Ceramic Tile Yellow, Hard		None Detected	100% NON FIBROUS MATERIAL
Layer 2:	Grout Gray, Granular		None Detected	100% NON FIBROUS MATERIAL
Layer 3:	Granular Material White, Granular		None Detected	100% NON FIBROUS MATERIAL
58	32276790	Parts Bath		
Layer 1:	Ceramic Tile Yellow, Hard		None Detected	100% NON FIBROUS MATERIAL
Layer 2:	Grout Gray, Granular		None Detected	100% NON FIBROUS MATERIAL
Layer 3:	Granular Material White, Granular		None Detected	100% NON FIBROUS MATERIAL
59	32276791	Parts Bath		
Layer 1:	Ceramic Tile White, Hard		None Detected	100% NON FIBROUS MATERIAL
Layer 2:	Grout Gray, Granular		None Detected	100% NON FIBROUS MATERIAL

Total Number of Pages in Report: 6

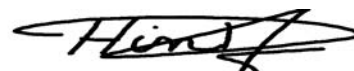
Results relate only to samples as received by the laboratory.

Visit www.slabin.com for current certifications.

Accrediting bodies: AIHA-LAP, LLC 100527, NVLAP 101150-0, VELAP/NELAC 460135 - Call laboratory for current national and state certifications.

Method reporting limit is 1%. PLM analysis is based on Visual Estimation and NESHAP recommends that any asbestos content less than 10 percent be verified by PLM Point Count or TEM Analysis. This report must not be reproduced except in full with the approval of the laboratory.

Customer Sample No.	SLI Sample/ Layer ID	Sample Identification/ Layer Name	PLM Analysis Results	
			Asbestos Fibers	Other Materials
Layer 3:	Granular Material White, Granular		None Detected	100% NON FIBROUS MATERIAL
60	32276792	Parts Bath		
Layer 1:	Ceramic Tile Yellow, Hard		None Detected	100% NON FIBROUS MATERIAL
Layer 2:	Grout Gray, Granular		None Detected	100% NON FIBROUS MATERIAL
Layer 3:	Granular Material White, Granular		None Detected	100% NON FIBROUS MATERIAL
61	32276793	Parts Bath		
Layer 1:	Ceramic Tile Yellow, Hard		None Detected	100% NON FIBROUS MATERIAL
Layer 2:	Grout Gray, Granular		None Detected	100% NON FIBROUS MATERIAL
Layer 3:	Granular Material White, Granular		None Detected	100% NON FIBROUS MATERIAL
62	32276794	Parts Bath		
Layer 1:	Ceramic Tile Yellow, Hard		None Detected	100% NON FIBROUS MATERIAL
Layer 2:	Grout Gray, Granular		None Detected	100% NON FIBROUS MATERIAL
Layer 3:	Granular Material White, Granular		None Detected	100% NON FIBROUS MATERIAL


Analyst: **Riham Hashim**

Reviewed By: **Hind Eldanaf, Microscopy Supervisor****Total Number of Pages in Report: 6**

Results relate only to samples as received by the laboratory.

Visit www.slabinc.com for current certifications.

Accrediting bodies: AIHA-LAP, LLC 100527, NVLAP 101150-0, VELAP/NELAC 460135 - Call laboratory for current national and state certifications.

Method reporting limit is 1%. PLM analysis is based on Visual Estimation and NESHAP recommends that any asbestos content less than 10 percent be verified by PLM Point Count or TEM Analysis. This report must not be reproduced except in full with the approval of the laboratory.

193-14-2651

CLIENT	JOB SITE
BAYWEST Development 2 Henry Adams Street 450 San Francisco CA	Crown Chevy Dealership 7544 Dublin Boulevard Dublin CA 94103 94568

KELCO Services JOB# 1407-16		LAB LOGIN #	
COLLECTED BY:	<u>G. Kypar</u>		
COLLECTED DATE	<u>2-5-14</u>		
TURN AROUND TIME:	Normal TAT	4	8
		24	48
			5-DAY
RESULTS			
NEEDED BY			

CIRCLE TYPE OF BULK ANALYSIS

PLM	LEAD PAINT	LEAD WIPE	NON VIABLE MOLD	VIABLE MOLD	ecoli	OTHER
# SAMPLES REC'D						
ANALYZE TO FIRST POSITIVE		YES	NO			
REPORT RESULTS TO PROJECT MANAGER		Tim Cannard				

NOTES & COMMENTS: write "Body Shop", or LAB REPORT TITLE, THINGS

CHAIN OF CUSTODY & SAMPLE SUBMITAL FORM			PAGE	OF	KELCO Services JOB# 1407-16
			Crown Chevy Dealership		

FIELD NUMBER	LOCATION (bldg, rm#, area)	COLOR	MATERIAL or SUBSTRATE (ft w/ size, mastic, tile, etc.)	NOTES: Like condition, damage, quantity, inside what, beneath what? direction in building (N, S, E, W) etc.)
41	Prnts / NE room	white	Wall Texturing	
42			2'x4' ceiling Tiles	
43	Center room	Blue	12"x12" Ceramic Floor Tiles	6x6 Tiles Set
44				
45				
46	North room	White	2'x4' ceiling Tiles	
47	NE room		Wall Texturing	
48	NE room		Multi layers Floor Tiles & mastic	Yellow
49				

RELEASED BY	DATE	TIME	RECEIVED BY	DATE	TIME
<u>[Signature]</u>	<u>2-5-14</u>		<u>[Signature]</u>	<u>2-5-14</u>	<u>9:50</u>

Ex 2480 R

Body Shop

CHAIN OF CUSTODY & SAMPLE SUBMITAL FORM

PAGE 2 of 2

KELCO Services JOB#: 1407-16

Crown Chevy Dealership

FIELD NUMBER	LOCATION (bldg, m# area)	COLOR	MATERIAL or SUBSTRATE (ft w/ size, mastic, tile, etc.)	NOTES: (like condition, damage, quantity, inside what beneath what? direction in building (N,S,E,W) etc.)
50	PRNTS / NW Room	White	Multi layers Flashing + mastic's	
51	South Wall		Wall Board + Joint compound (WB/JC)	
52	SE Room	Yellow	CARPET MASTIC	
53		TRV	ROSEBORO MASTIC	
54		White	Wall TEXTURE	
55	NW Room		WB/JC	
56		Tan	ROSEBORO MASTIC	
57	1st PRNT	Yellow	4"x4" Ceramic Tile with grout + Thin Set	
58				
59				
60				FLOOR
61				
62				



RELEASED BY	DATE	TIME	RECEIVED BY	DATE	TIME
[Signature]	8-5-14		[Signature]	8-6-14	950

6-7480 R

SCHNEIDER LABORATORIES GLOBAL

INCORPORATED

2512 W. Cary Street • Richmond, Virginia • 23220-5117
804-353-6778 • 800-785-LABS (5227) • (FAX) 804-359-1475

Over 25 Years of Excellence in Service and Technology

LABORATORY ANALYSIS REPORT

Lead Analysis based on EPA 7000B Method

Using Preparation Method EPA 3050B

ACCOUNT #: 193-14-2639
CUSTOMER: KELLCO SERVICES INC
ADDRESS: 3137 DIABLO AVENUE
HAYWARD, CA 94545-2701

DATE RECEIVED: 8/5/2014
DATE ANALYZED: 8/5/2014
DATE REPORTED: 8/5/2014

PROJECT NAME: Chevy Building
JOB LOCATION: 7544 Dublin Blvd.
PROJECT NO.: 1407-16
PO NO.:

Sample Type: PAINT

SLI Sample No.	Customer Sample No.	Collection Date	Sample Description	Sample Wt (mg)	Total Lead (µg)	Lead Conc (% by wt)	Lead Conc PPM
32275912	1PC	8/4/2014	Composite Interior	320	37.6	0.012	117
32275913	2PC	8/4/2014	Composite Exterior	302	< 10.0	< 0.003	< 33

Analysis Run ID: 53688

Analyst: Sultan Al-Johani

Total Number of Pages in Report: 1

Results relate only to samples as received by the laboratory.


Reviewed By **Alfreda R. Jones, Data Management**
Visit www.slabinc.com for current certifications.

Accrediting bodies: AIHA-LAP, LLC 100527, NVLAP 101150-0, VELAP/NELAC 460135 - Call laboratory for current national and state certifications.

Minimum Reporting Limit: 10.0 µg. Lead Based Paint contains 0.5% lead by weight per Federal statute. The OSHA Lead in Construction Standard, 29 CFR 1926.62, is invoked if any lead is present in the sample. All internal QC parameters were met. Unusual sample conditions, if any, are described.

CLIENT

BAYWEST Development
2 Henry Adams Street
450
San Francisco CA 94103

JOB SITE

Crown Chevy Dealership
7544 Dublin Boulevard
Dublin CA 94568

KELCO Services JOB# 1407-16

LAB LOG IN #

COLLECTED BY: Dayton

COLLECTED DATE: 8-4-14

TURN AROUND TIME: Normal TAT 4 8 24 48 5-DAY

RESULTS
NEEDED BY

CIRCLE TYPE OF BULK ANALYSIS

PLM LEAD PAINT LEAD WIPE NON VIABLE MOLD VIABLE MOLD ECOI OTHER

SAMPLES RECD _____ ANALYZE TO FIRST POSITIVE YES NO

REPORT RESULTS TO
PROJECT MANAGER

Tim Cannard

NOTES & COMMENTS:

WRITE on LAB REPORT 1 CHEVY BUILDING, TITMUS

CHAIN OF CUSTODY & SAMPLE SUBMITAL FORM

PAGE 1 OF 1

KELCO Services JOB# 1407-16
Crown Chevy Dealership

FIELD NUMBER	LOCATION (bldg, rm#, area)	COLOR	MATERIAL or SUBSTRATE (ft w size, mastic, etc.)	NOTES: Like condition, damage, quantity, inside what, beneath what? direction in building (N,S,E,W) etc.)
1 PC	COMPOSITE EXTENSION	VARIOUS	PARTICULARS	
2 PC	COMPOSITE EXTENSION			

WorkOrderKey

V : 1020 \ 1020379

RELEASED BY

DATE

TIME

RECEIVED BY

DATE

TIME

8-4-14

Dayton

8-5-14

955

62 7506 A

SCHNEIDER LABORATORIES GLOBAL

INCORPORATED

2512 W. Cary Street • Richmond, Virginia • 23220-5117
804-353-6778 • 800-785-LABS (5227) • (FAX) 804-359-1475

Over 25 Years of Excellence in Service and Technology

LABORATORY ANALYSIS REPORT

Lead Analysis based on EPA 7000B Method

Using Preparation Method EPA 3050B

ACCOUNT #: 193-14-2640
CUSTOMER: KELLCO SERVICES INC
ADDRESS: 3137 DIABLO AVENUE
HAYWARD, CA 94545-2701

DATE RECEIVED: 8/5/2014
DATE ANALYZED: 8/5/2014
DATE REPORTED: 8/5/2014

PROJECT NAME: Service Island
JOB LOCATION: 7544 Dublin Blvd
PROJECT NO.: 1407-16
PO NO.:

Sample Type: PAINT

SLI Sample No.	Customer Sample No.	Collection Date	Sample Description	Sample Wt (mg)	Total Lead (µg)	Lead Conc (% by wt)	Lead Conc PPM
32275922	9PC	8/4/2014	Composite Exterior	306	< 10.0	< 0.003	< 33

Analysis Run ID: 53688

Analyst: Sultan Al-Johani

Total Number of Pages in Report: 1

Results relate only to samples as received by the laboratory.


Reviewed By **Alfreda R. Jones, Data Management**
Visit www.slabinc.com for current certifications.

Accrediting bodies: AIHA-LAP, LLC 100527, NVLAP 101150-0, VELAP/NELAC 460135 - Call laboratory for current national and state certifications.

Minimum Reporting Limit: 10.0 µg. Lead Based Paint contains 0.5% lead by weight per Federal statute. The OSHA Lead in Construction Standard, 29 CFR 1926.62, is invoked if any lead is present in the sample. All internal QC parameters were met. Unusual sample conditions, if any, are described.

CLIENT

BAYWEST Development
2 Henry Adams Street
San Francisco
CA 94103

JOB SITE

Crown Chevy Dealership
7544 Dublin Boulevard
Dublin
CA 94568

KELCO Services JOB# 1407-16

LAB LOGIN #

COLLECTED BY: Baywest

COLLECTED DATE: 8-14-14

TURN AROUND TIME: 4 8 24 48 5-DAY

Normal TAT

RESULTS NEEDED BY

CIRCLE TYPE OF BULK ANALYSIS

PLM LEAD PAINT LEAD WIPE NON VIABLE MOLD VIABLE MOLD ECOLI OTHER

SAMPLES REC'D

ANALYZE TO FIRST POSITIVE YES NO

REPORT RESULTS TO PROJECT MANAGER

Jim Carnard

NOTES & COMMENTS:

Write on LAB REPORT "Service Island" - TYPALS

CHAIN OF CUSTODY & SAMPLE SUBMITAL FORM

PAGE 1 OF 1

KELCO Services JOB# 1407-16
Crown Chevy Dealership

FIELD NUMBER	LOCATION (bldg, rm#, area)	COLOR	MATERIAL or SUBSTRATE (ft w/ size, mastic, flc, etc.)	NOTES: Like condition, damage, quantity, inside what, beneath what? direction in building (N, S, E, W) etc.)
9pc	Composite Extension	Various	Prior clips	
			Service	
			ISLAND	

WorkOrderKey
V: 1020 \ 1020380

RELEASED BY

DATE

TIME

RECEIVED BY

DATE

TIME

8-14-14

8-14-14

7:55

7506 X

SCHNEIDER LABORATORIES GLOBAL

INCORPORATED

2512 W. Cary Street • Richmond, Virginia • 23220-5117
804-353-6778 • 800-785-LABS (5227) • (FAX) 804-359-1475

Over 25 Years of Excellence in Service and Technology

LABORATORY ANALYSIS REPORT

Lead Analysis based on EPA 7000B Method

Using Preparation Method EPA 3050B

ACCOUNT #: 193-14-2642
CUSTOMER: KELCO SERVICES INC
ADDRESS: 3137 DIABLO AVENUE
HAYWARD, CA 94545-2701

DATE RECEIVED: 8/5/2014
DATE ANALYZED: 8/5/2014
DATE REPORTED: 8/5/2014

PROJECT NAME: Service Shop
JOB LOCATION: 7544 Dublin Blvd
PROJECT NO.: 1407-16
PO NO.:

Sample Type: PAINT

SLI Sample No.	Customer Sample No.	Collection Date	Sample Description	Sample Wt (mg)	Total Lead (µg)	Lead Conc (% by wt)	Lead Conc PPM
32275926	5PC	8/4/214	Composite Interior	313	26.8	0.009	86
32275927	6PC	8/4/214	Composite Exterior	315	244.7	0.078	777

Analysis Run ID: 53688

Analyst: Sultan Al-Johani

Total Number of Pages in Report: 1

Results relate only to samples as received by the laboratory.


Reviewed By **Alfreda R. Jones, Data Management**
Visit www.slabinc.com for current certifications.

Accrediting bodies: AIHA-LAP, LLC 100527, NVLAP 101150-0, VELAP/NELAC 460135 - Call laboratory for current national and state certifications.

Minimum Reporting Limit: 10.0 µg. Lead Based Paint contains 0.5% lead by weight per Federal statute. The OSHA Lead in Construction Standard, 29 CFR 1926.62, is invoked if any lead is present in the sample. All internal QC parameters were met. Unusual sample conditions, if any, are described.

CLIENT

BAYWEST Development
2 Henry Adams Street
450
San Francisco
CA 94103

JOB SITE

Crown Chevy Dealership
7544 Dublin Boulevard
Dublin
CA 94568

CIRCLE TYPE OF BULK ANALYSIS

PLM LEAD PAINT LEAD WIPE NON VIABLE MOLD VIABLE MOLD eCOLI OTHER

SAMPLES REC'D _____ ANALYZE TO FIRST POSITIVE YES NO

NOTES & COMMENTS:

WRITE OR LAB REPORT "SERVICE STOP",

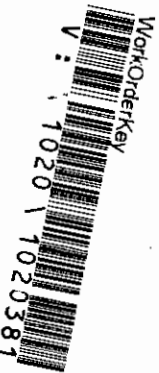
TITRALS

CHAIN OF CUSTODY & SAMPLE SUBMITAL FORM

PAGE 1 OF 1

KELCO Services JOB# 1407-16
Crown Chevy Dealership

FIELD NUMBER	LOCATION (bldg, rm#, area)	COLOR	MATERIAL or SUBSTRATE (ft w/ size, mastic, etc.)	NOTES: Like condition, damage, quantity, inside what, beneath what? direction in building (N,S,E,W) etc.)
5 PC	COMPOSITE INTERIOR	VARIOUS	PIVOT CLIPS	
2 PC	COMPOSITE EXTENSION	1	1	
			SERVICE	
			STOP	



1930402642

KELCO Services JOB# 1407-16 LAB LOGIN #

COLLECTED BY: *Cheryl*

COLLECTED DATE: 8-4-14

TURN AROUND TIME: Normal TAT 4 8 24 48 5-DAY

RESULTS NEEDED BY

REPORT RESULTS TO PROJECT MANAGER

Tim Carnaud

RELEASED BY <i>[Signature]</i>	DATE 8-4-14	TIME	RECEIVED BY <i>[Signature]</i>	DATE 8-5-14	TIME 955
--------------------------------	-------------	------	--------------------------------	-------------	----------

Q 7506 X

SCHNEIDER LABORATORIES GLOBAL

INCORPORATED

2512 W. Cary Street • Richmond, Virginia • 23220-5117
804-353-6778 • 800-785-LABS (5227) • (FAX) 804-359-1475

Over 25 Years of Excellence in Service and Technology

LABORATORY ANALYSIS REPORT

Lead Analysis based on EPA 7000B Method

Using Preparation Method EPA 3050B

ACCOUNT #: 193-14-2641
CUSTOMER: KELLCO SERVICES INC
ADDRESS: 3137 DIABLO AVENUE
HAYWARD, CA 94545-2701

DATE RECEIVED: 8/5/2014
DATE ANALYZED: 8/5/2014
DATE REPORTED: 8/5/2014

PROJECT NAME: Body Shop
JOB LOCATION: 7544 Dublin Blvd
PROJECT NO.: 1407-16
PO NO.:

Sample Type: PAINT

SLI Sample No.	Customer Sample No.	Collection Date	Sample Description	Sample Wt (mg)	Total Lead (µg)	Lead Conc (% by wt)	Lead Conc PPM
32275924	7PC	8/4/2014	Composite Exterior	322	34.0	0.011	106
32275925	8PC	8/4/2014	Composite Interior	308	< 10.0	< 0.003	< 32

Analysis Run ID: 53688

Analyst: Sultan Al-Johani

Total Number of Pages in Report: 1

Results relate only to samples as received by the laboratory.



Reviewed By **Alfreda R. Jones, Data Management**
Visit www.slabinc.com for current certifications.

Accrediting bodies: AIHA-LAP, LLC 100527, NVLAP 101150-0, VELAP/NELAC 460135 - Call laboratory for current national and state certifications.

Minimum Reporting Limit: 10.0 µg. Lead Based Paint contains 0.5% lead by weight per Federal statute. The OSHA Lead in Construction Standard, 29 CFR 1926.62, is invoked if any lead is present in the sample. All internal QC parameters were met. Unusual sample conditions, if any, are described.

SCHNEIDER LABORATORIES GLOBAL

INCORPORATED

2512 W. Cary Street • Richmond, Virginia • 23220-5117
804-353-6778 • 800-785-LABS (5227) • (FAX) 804-359-1475

Over 25 Years of Excellence in Service and Technology

LABORATORY ANALYSIS REPORT

Lead Analysis based on EPA 7000B Method

Using Preparation Method EPA 3050B

ACCOUNT #: 193-14-2643
CUSTOMER: KELLCO SERVICES INC
ADDRESS: 3137 DIABLO AVENUE
HAYWARD, CA 94545-2701

DATE RECEIVED: 8/5/2014
DATE ANALYZED: 8/5/2014
DATE REPORTED: 8/5/2014

PROJECT NAME: Cadillac Building

JOB LOCATION: 7544 Dublin Blvd

PROJECT NO.: 1407-16

PO NO.:

Sample Type: PAINT

SLI Sample No.	Customer Sample No.	Collection Date	Sample Description	Sample Wt (mg)	Total Lead (µg)	Lead Conc (% by wt)	Lead Conc PPM
32275928	3 PC	8/4/2014	Composite Interior Various	329	10.6	0.003	32
32275929	4 PC	8/4/2014	Composite Exterior Various	302	< 10.0	< 0.003	< 33

Analysis Run ID: 53688

Analyst: Sultan Al-Johani

Total Number of Pages in Report: 1

Results relate only to samples as received by the laboratory.


Reviewed By **Alfreda R. Jones, Data Management**
Visit www.slabinc.com for current certifications.

Accrediting bodies: AIHA-LAP, LLC 100527, NVLAP 101150-0, VELAP/NELAC 460135 - Call laboratory for current national and state certifications.

Minimum Reporting Limit: 10.0 µg. Lead Based Paint contains 0.5% lead by weight per Federal statute. The OSHA Lead in Construction Standard, 29 CFR 1926.62, is invoked if any lead is present in the sample. All internal QC parameters were met. Unusual sample conditions, if any, are described.

CLIENT

BAYWEST Development
2 Henry Adams Street
450
San Francisco
CA

JOB SITE

Crown Chevy Dealership
7544 Dublin Boulevard
Dublin
CA 94103 94568

KELCO Services JOB# 1407-16

LAB LOGIN #

COLLECTED BY: *Chyru*

COLLECTED DATE: *8-14-14*

TURN AROUND TIME: Normal TAT

4

8

24

48

5-DAY

CIRCLE TYPE OF BULK ANALYSIS

PLM LEAD PAINT LEAD WIPE NON VIABLE MOLD VIABLE MOLD ECOLI OTHER

SAMPLES REC'D _____ ANALYZE TO FIRST POSITIVE YES NO

NOTES & COMMENTS:

Write on LAB REPORT TITLE? "CAPILLAR BUILDING", then

CHAIN OF CUSTODY & SAMPLE SUBMITAL FORM

PAGE _____ OF _____

KELCO Services JOB# 1407-16

Crown Chevy Dealership

FIELD NUMBER

LOCATION (bldg, rm#, area)

COLOR

MATERIAL or SUBSTRATE (ft w/ size, mastic, etc.)

NOTES: Like condition, damage, quantity, inside what, beneath what? direction in building (N,S,E,W) etc.)

3PC Composite Tension

Various

PAINT chips

4PC Extension

capillare

capillare

capillare

WorkOrderKey

V : 1020 \ 1020365

RELEASED BY

DATE

TIME

RECEIVED BY

DATE

TIME

SWH

8-14-14

[Signature]

8-14-14

8:55

7528R

SCHNEIDER LABORATORIES GLOBAL

INCORPORATED

2512 W. Cary Street • Richmond, Virginia • 23220-5117
804-353-6778 • 800-785-LABS (5227) • (FAX) 804-359-1475

Over 25 Years of Excellence in Service and Technology

LABORATORY ANALYSIS REPORT

Lead Analysis based on EPA 7000B Method

Using Preparation Method EPA 3050B

ACCOUNT #: 193-14-2643
CUSTOMER: KELLCO SERVICES INC
ADDRESS: 3137 DIABLO AVENUE
HAYWARD, CA 94545-2701

DATE RECEIVED: 8/5/2014
DATE ANALYZED: 8/5/2014
DATE REPORTED: 8/5/2014

PROJECT NAME: Cadillac Building

JOB LOCATION: 7544 Dublin Blvd

PROJECT NO.: 1407-16

PO NO.:

Sample Type: PAINT

SLI Sample No.	Customer Sample No.	Collection Date	Sample Description	Sample Wt (mg)	Total Lead (µg)	Lead Conc (% by wt)	Lead Conc PPM
32275928	3 PC	8/4/2014	Composite Interior Various	329	10.6	0.003	32
32275929	4 PC	8/4/2014	Composite Exterior Various	302	< 10.0	< 0.003	< 33

Analysis Run ID: 53688

Analyst: Sultan Al-Johani

Total Number of Pages in Report: 1

Results relate only to samples as received by the laboratory.


Reviewed By **Alfreda R. Jones, Data Management**
Visit www.slabinc.com for current certifications.

Accrediting bodies: AIHA-LAP, LLC 100527, NVLAP 101150-0, VELAP/NELAC 460135 - Call laboratory for current national and state certifications.

Minimum Reporting Limit: 10.0 µg. Lead Based Paint contains 0.5% lead by weight per Federal statute. The OSHA Lead in Construction Standard, 29 CFR 1926.62, is invoked if any lead is present in the sample. All internal QC parameters were met. Unusual sample conditions, if any, are described.

CLIENT

BAYWEST Development
2 Henry Adams Street
450
San Francisco
CA

JOB SITE

Crown Chevy Dealership
7544 Dublin Boulevard
Dublin
CA 94103 94568

CIRCLE TYPE OF BULK ANALYSIS

PLM LEAD PAINT LEAD WIPE NON VIABLE MOLD VIABLE MOLD ECOLI OTHER

SAMPLES REC'D _____ ANALYZE TO FIRST POSITIVE YES NO

NOTES & COMMENTS:

Write on LAB REPORT TITLE? "CADILLAC BUILDING", THEN

CHAIN OF CUSTODY & SAMPLE SUBMITAL FORM

PAGE _____ OF _____

KELCO Services JOB#: 1407-16

Crown Chevy Dealership

FIELD NUMBER	LOCATION (bldg, rm#, area)	COLOR	MATERIAL or SUBSTRATE (ft w/ size, mastic, etc.)	NOTES: Like condition, damage, quantity, inside what, beneath what? direction in building (N,S,E,W) etc.)
3 PC	Composite	Various	PAINT chips	
4 PC	↓ Extension	↓	↓	
			CHAPILLINE	
			CADILLAC	
			BUILDING	

WorkOrderKey

V : 1020 \ 1020365

KELCO Services JOB# 1407-16

LAB LOGIN #

COLLECTED BY: *Chyner*

COLLECTED DATE

8-14-14

TURN AROUND TIME:

Normal TAT

4

8

24

48

5-DAY

RESULTS NEEDED BY

REPORT RESULTS TO PROJECT MANAGER *Tim Cannard*

RELEASED BY

DATE

TIME

RECEIVED BY

DATE

TIME

SWH

8-14-14

[Signature]

8-14-14

8:55

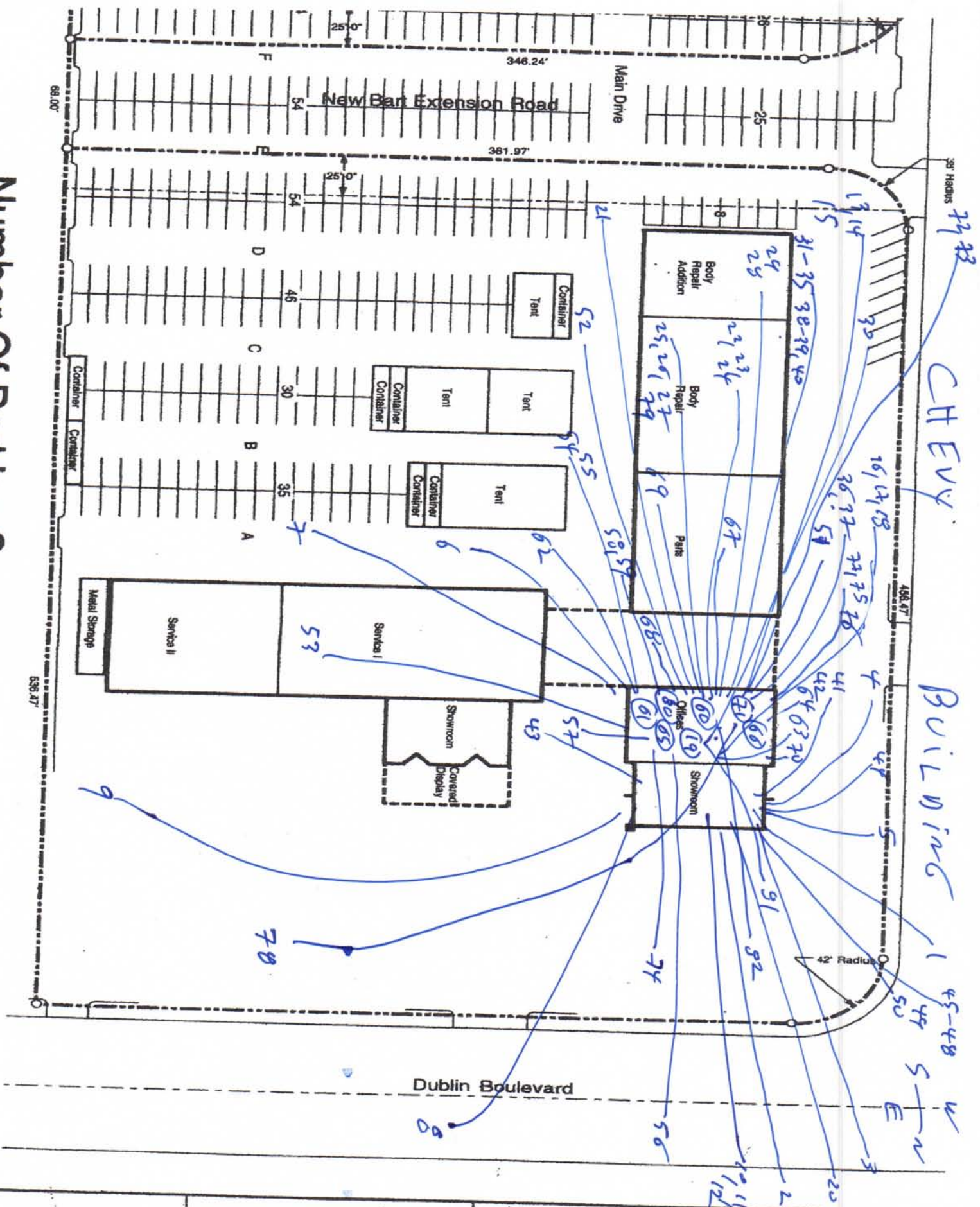
193-14-26115

7528R

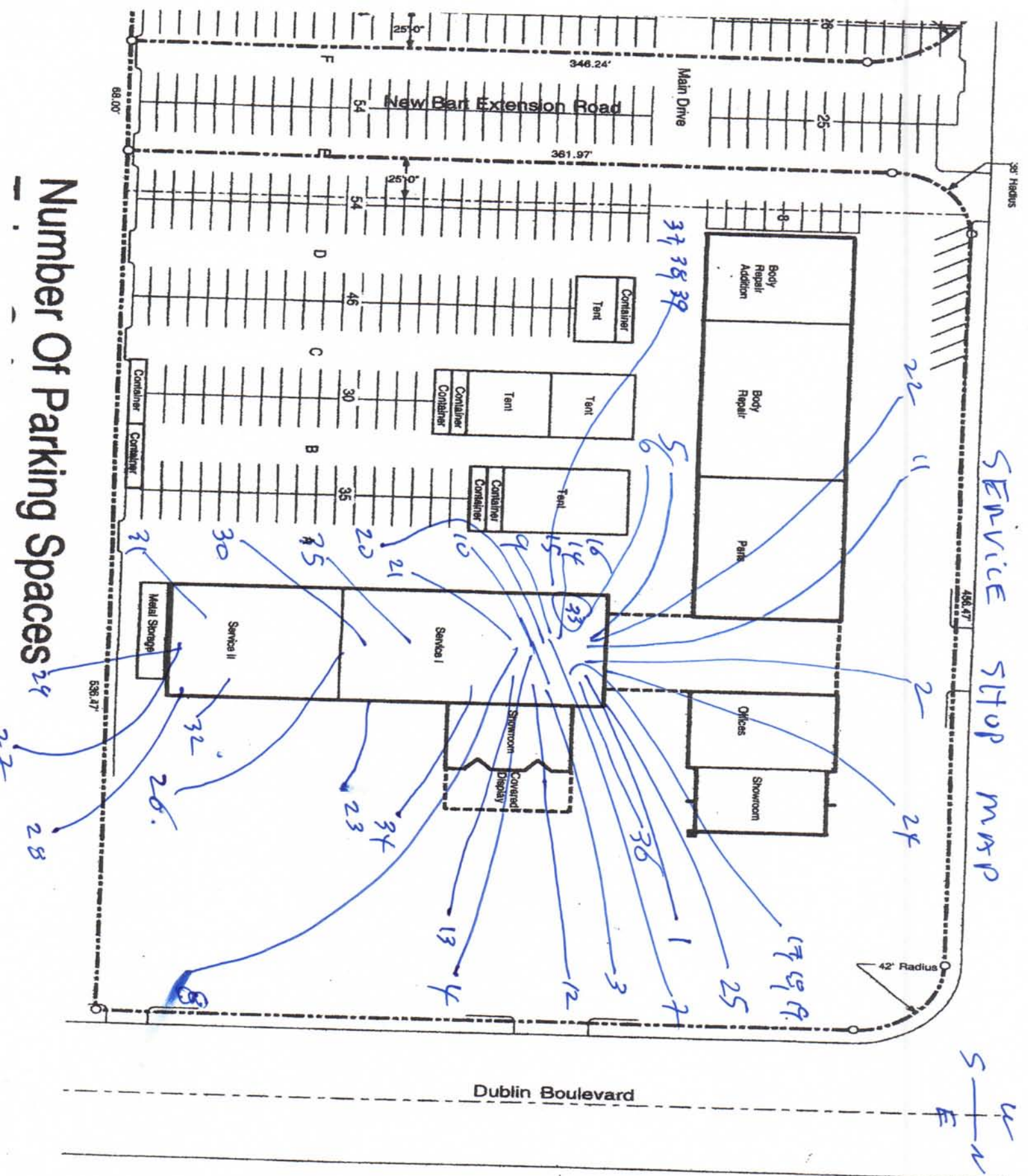
$$\frac{5}{-3}$$


<p>Parking Spaces Taken</p>	<p>Crown Dublin 7544 Duhlin Blvd. Dublin, California</p>	<div data-bbox="860 1843 1049 1852" data-label="Image"> </div> <p>SUNCOAST AUTOBUILDERS <i>"The Dealer's Premier Design/Builder"™</i> 5180 113th Ave. No. Clearwater, FL 33760 Phone: (813) 561-0764 Fax: (813) 571-3773</p>
------------------------------------	---	--

Number Of Parking Spaces



Number Of Parking Spaces



Parking Spaces Taken

Crown Dublin
7544 Dublin Blvd.
Dublin, California



SUNCOAST AUTOBUILDERS
"The Dealer's Premier Design/Builder"
5180 113th Ave. No. Clearwater, FL 33760
Phone: (813) 561-0784 Fax: (813) 571-3773









