

RECEIVED

By Alameda County Environmental Health at 1:58 pm, Feb 23, 2015

February 9, 2015

Ms. Donna Drogos
Alameda County Environmental Health
1131 Harbor Parkway, Suite 250
Oakland, CA 94502-6577

Subject: Third Quarter 2014 Groundwater Monitoring Report
Shore Acres Gas
403 East 12th Street, Oakland, Alameda County, California
RO #0002931
ECG # GHA.19009

Dear Ms. Drogos:

Enclosed please find a copy of the December 18, 2014 *Third Quarter 2014 Groundwater Monitoring Report* for the above referenced site prepared by our consultant Environmental Compliance Group, LLC.

I declare, under penalty and perjury, that the information and/or recommendations contained in this report are true and correct to the best of my knowledge.

Respectfully,



Rashid Ghafoor

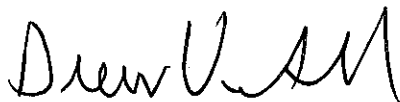
THIRD QUARTER 2014 GROUNDWATER
MONITORING AND REMEDIATION
STATUS REPORT

SHORE ACRES GAS
403 EAST 12TH STREET
OAKLAND, CALIFORNIA

Prepared for: Rashid Ghafoor

ECG Project Number: GHA.19009
Alameda County Fuel Leak Case No. RO0002931

December 18, 2014



Drew Van Allen
Senior Project Manager



Michael S. Sgourakis
Principal Geologist
CA P.G. No. 7194

TABLE OF CONTENTS

Introduction.....	3
Limitations	3
Site Description and Hydrogeologic Conditions.....	3
Site Description.....	3
Hydrogeologic Conditions.....	3
Cleanup Criteria	4
Project Background.....	4
Investigations	4
Risk Assessments.....	4
Corrective Actions	5
Third Quarter 2014 Monitoring Event.....	5
Work Performed and Proposed.....	5
Work Performed Third Quarter 2014.....	5
Work Scheduled for Fourth Quarter 2014.....	5
Discussion of Recent Monitoring Activities.....	6
Discussion of Recent Remediation Activities	6
Results and Conclusions.....	7

Figures

Figure 1:	Site Location Map
Figure 2:	Site Map
Figure 3:	Potentiometric Surface Map
Figure 4:	TPHg in Groundwater Isoconcentration Map
Figure 5:	Benzene in Groundwater Isoconcentration Map
Figure 6:	MTBE in Groundwater Isoconcentration Map

Tables

Table 1:	Well Construction Details
Table 2a:	Historical Soil Analytical Data, TPH and BTEX
Table 2b:	Historical Soil Analytical Data, Oxygenates and Lead Scavengers
Table 3a:	Grab Groundwater Sample Results, TPH and BTEX
Table 3b:	Grab Groundwater Sample Results, Oxygenates and Lead Scavengers
Table 4a:	Monitoring Well Data, Water Level, TPH, and BTEX
Table 4b:	Monitoring Well Data, Oxygenates and Lead Scavengers
Table 5a:	Soil Vapor Extraction System Performance Calculations
Table 5b:	Soil Vapor Extraction Destruction Efficiency and Emission Calculations
Table 5c:	Groundwater Treatment System Performance Data

Appendices

- Appendix A: Standard Operating Procedures
- Appendix B: Laboratory Analytical Reports
- Appendix C: Field Notes

INTRODUCTION

Environmental Compliance Group (ECG) has been authorized by Mr. Rashid Ghafoor to provide this report for the site.

This report describes activities conducted during Third Quarter 2014 groundwater monitoring event. Site information is as follows:

Site Location:	403 East 12 th Street Oakland, California
Geotracker Global ID:	T0600174667

LIMITATIONS

This report has been prepared for use by Rashid Ghafoor and the relevant regulatory agencies. The conclusions in this report are professional opinions based on the data presented in this report. This report was prepared in general accordance with hydrogeologic and engineering methods and standards. No other warranties are made as to the findings or conclusions presented in this report. The work described in this report was performed under the direct supervision of the professional geologist whose signature and State of California registration are shown above.

SITE DESCRIPTION AND HYDROGEOLOGIC CONDITIONS

SITE DESCRIPTION

The site occupies a parcel on the southeast corner of 4th Avenue and East 12th Street in Oakland, Alameda County, California (Figure 1). The site is situated in a commercial and residential area in central Oakland and is currently vacant. The site was historically used as a gasoline station. The area of interest at the site is the former location of three underground storage tanks (USTs) and fuel dispensers where impacted soil and groundwater was first identified in 2006. A detailed site plan is shown on Figure 2.

HYDROGEOLOGIC CONDITIONS

The site is underlain by Quaternary-age dune sand deposits referred to as the Merritt Sand. The Merritt Sand is typically described as loose, well-sorted fine- to medium-grained sand with a large silt component. The sand is reported to reach a maximum depth of 50-feet bgs in the area.

Based on boring logs from the advancement of 11 soil borings and the installation of six monitoring wells and four extraction wells, the stratigraphy of the site and vicinity consists of silt to approximately 30-feet bgs with discontinuous thin intervals of sandy silt and clayey sand present in the area.

Depth to groundwater is shallow, ranging between 10- to 14-feet bgs. The groundwater flow direction appears to be generally toward the south or southwest.

CLEANUP CRITERIA

It is prudent to establish cleanup goals for soil and groundwater based upon reaching the residential Environmental Screening Levels (ESLs) established by Region II for sites with shallow soil where groundwater is not a current or potential drinking water source. The primary constituents of concern relative to the site appear to be total petroleum hydrocarbons as diesel (TPHd) and gasoline (TPHg) benzene, toluene, ethylbenzene, and xylenes (BTEX), methyl tertiary butyl ether (MTBE), and tertiary butyl alcohol (TBA). Accordingly, the following cleanup goals are proposed:

Constituent	Soil (mg/kg)	Groundwater (ug/L)
TPHd	100	210
TPHg	100	210
Benzene	0.12	46
Toluene	9.3	130
Ethylbenzene	2.3	43
Xylenes	11	100
MTBE	8.4	1,800
TBA	100	18,000

PROJECT BACKGROUND

INVESTIGATIONS

In July 2006, Geofon Incorporated (Geofon) advanced soil borings GP-1 and GP-2 and collected and analyzed soil samples. Results are detailed in Geofon's report entitled *Summary of Phase II Assessment Activities*, dated July 25, 2006.

In August 2009, Wright Environmental Services, Inc. (Wright) removed three USTs, associated fuel dispensers, and all associated piping. Results are detailed in Wright's *Closure Report for Three Underground Storage Tanks*, dated September 2009.

In April 2010, Apex Envirotech, Inc. (Apex) advanced nine soil borings to evaluate the lateral extent of impacted soil and groundwater. Results are documented in Apex's *Subsurface Investigation Results Report* dated June 23, 2010.

In June 2011, ECG supervised the installation of six groundwater monitoring wells (MW-1 through MW-6) and two extraction wells (EW-1 and EW-2). Results are documented in ECG's *Off-Site Investigation and Dual Phase Pilot Test Results with Fourth Quarter 2011 Monitoring Report*, dated January 26, 2012.

RISK ASSESSMENTS

In January 2011, ECG conducted a preferential pathway study for the site. Results are detailed in ECG's *Site Assessment and Soil Vapor Extraction Pilot Test Workplan*, dated February 9, 2011.

In January 2011, ECG conducted a sensitive receptor survey for the site. Results are detailed in ECG's *Site Assessment and Soil Vapor Extraction Pilot Test Workplan*, dated February 9, 2011.

A soil vapor survey has not been completed for the site.

CORRECTIVE ACTIONS

In June 2011, ECG supervised the installation of six groundwater monitoring wells (MW-1 through MW-6) and two extraction wells (EW-1 and EW-2). ECG also performed a 5-day dual phase extraction (DPE) test in June 2011. Results are documented in ECG's *Off-Site Investigation and Dual Phase Pilot Test Results with Fourth Quarter 2011 Monitoring Report*, dated January 26, 2012.

In May 2013, ECG supervised the installation of two extraction wells (EW-3 and EW-4). In September 2013, ECG installed the subsurface piping network from the remediation wells to the remediation compound and the subsurface conduit required by PG&E to install the electrical service required to operate the remediation compound.

In April 2014, the dual phase extraction system began operation. The DPE system includes a 25-horsepower liquid-ring blower capable of up to 400 standardized cubic feet per minute (scfm) flowrate, thermal/catalytic oxidizer, a conveyance piping network, and four individual extraction wells. The blower extracts vapors and groundwater from each extraction wells and through the conveyance piping where the impacted vapor is destroyed in the thermal/catalytic oxidizer prior to discharge to the atmosphere and the groundwater is treated with an air stripper and granular activated carbon prior to discharge to the municipal sewer system.

The DPE system is operated under Bay Area Air Quality Management District (BAAQMD) permit number 25354 and East Bay Municipal Utility District (EBMUD) Discharge Permit No. 68508758. The DPE system has removed approximately 6,083 pounds of TPHg, 30 pounds of benzene, and 2 pounds of MTBE from the subsurface. The remediation system was started on April 30, 2014 and shut down on June 27, 2014 due to carbon change out requirements. The system was restarted on August 15, 2014.

THIRD QUARTER 2014 MONITORING EVENT

WORK PERFORMED AND PROPOSED

The following is a summary of work performed during the third quarter 2014 and work proposed for next quarter at the site.

WORK PERFORMED THIRD QUARTER 2014

1. Carbon was changed out and the propane tank was relocated in August 2014.
 2. The third quarter 2014 groundwater monitoring event was performed on September 19, 2014.
 3. ECG performed DPE system startup, troubleshooting, and maintenance to the O&M unit.
-

WORK SCHEDULED FOR FOURTH QUARTER 2014

1. Prepare and finalize the third quarter 2014 monitoring report.
2. Continue to operate the remediation system.

3. Perform fourth quarter 2014 monitoring event.

DISCUSSION OF RECENT MONITORING ACTIVITIES

ECG performed the third quarter 2014 groundwater monitoring and sampling event at the site on September 19, 2014. Gauging, development, purging, and sampling were conducted in accordance with ECG's SOPs included in Appendix A. The collected groundwater samples were submitted to Argon Analytical Services, Inc. located in Ceres, California for laboratory analysis under COC protocols (Appendix B).

The following is a summary of the current status of the groundwater monitoring program at the site:

Current Phase of Project:	Remediation
Groundwater Sampling Schedule:	Quarterly Wells MW-1 through MW-6, EW-1 through EW-4
Analysis:	TPHg by EPA Method 8015M, BTEX, 5 oxygenates, and 2 lead scavengers by EPA Method 8260B
Is Free Product Present On-Site:	No

The following is a summary of recent field and analytical data:

Average Depth to Groundwater	12.45-feet below ground surface (bgs)
Average Groundwater Elevation	18.81 -feet above mean sea level
Groundwater Gradient Direction remediation	Inward drawdown induced by active
Groundwater Gradient	Not Calculated
TPHg Detected Range	990 ug/L (MW-2) to 56,000 ug/L (MW-5)
Benzene Detected Range	42 ug/L (MW-2) to 1,000 ug/L (MW-5)
MTBE Detected	7.1 ug/L (MW-6) to 390 (MW-3)

Laboratory analytical reports and COCs are provided in Appendix B. Field notes are located in Appendix C. Summaries of groundwater monitoring and analytical data are presented in Tables 4a.

DISCUSSION OF RECENT REMEDIATION ACTIVITIES

The system was shut down on June 27, 2014 for carbon change out activities and restarted on August 15, 2014. ECG performed remediation system monitoring and operations and maintenance activities on August 22 and 29 and September 5, 16, 19, and 25, 2014. Multiple additional visits were made to the site to ensure the operation of the remediation systems and restart them as needed as the unit needed. Operating parameters are recorded twice each month and are included on the field notes in Appendix C. Influent and effluent vapor samples are field screened each visit with a photoionization detector and samples are collected monthly in accordance with BAAQMD permit requirements. The collected vapor samples were submitted to Kiff Analytical, LLC, located in Davis, California for laboratory analysis under COC protocols.

The following is a summary of the third quarter 2014 remediation results at the site:

SVE System Operating Hours	547.5 hours, 23 days
----------------------------	----------------------

Active SVE Extraction Points	Varied
Average Influent Flowrate	144 scfm
TPHg Detected Range in SVE Influent	33 parts per million by volume (ppmv) to 2,100 ppmv
Benzene Detected Range in SVE Influent	0.79 ppmv to 15 ppmv
MTBE Detected in SVE Influent	0.13 ppmv to 1.0 ppmv
SVE Destruction Efficiency	>97% or less than 0.109 pounds of benzene per day emission
Average Groundwater Extraction Rate	1.2 gallons per minute (gpm)
Average TPHg Detected in Groundwater Influent	17,500 ug/L
Average Benzene Detected in Groundwater Influent	760 ug/L
Average MTBE Detected in Groundwater Influent	148 ug/L

Summaries of remediation system operating parameters and analytical data are presented in Tables 5a, 5b, and 5c.

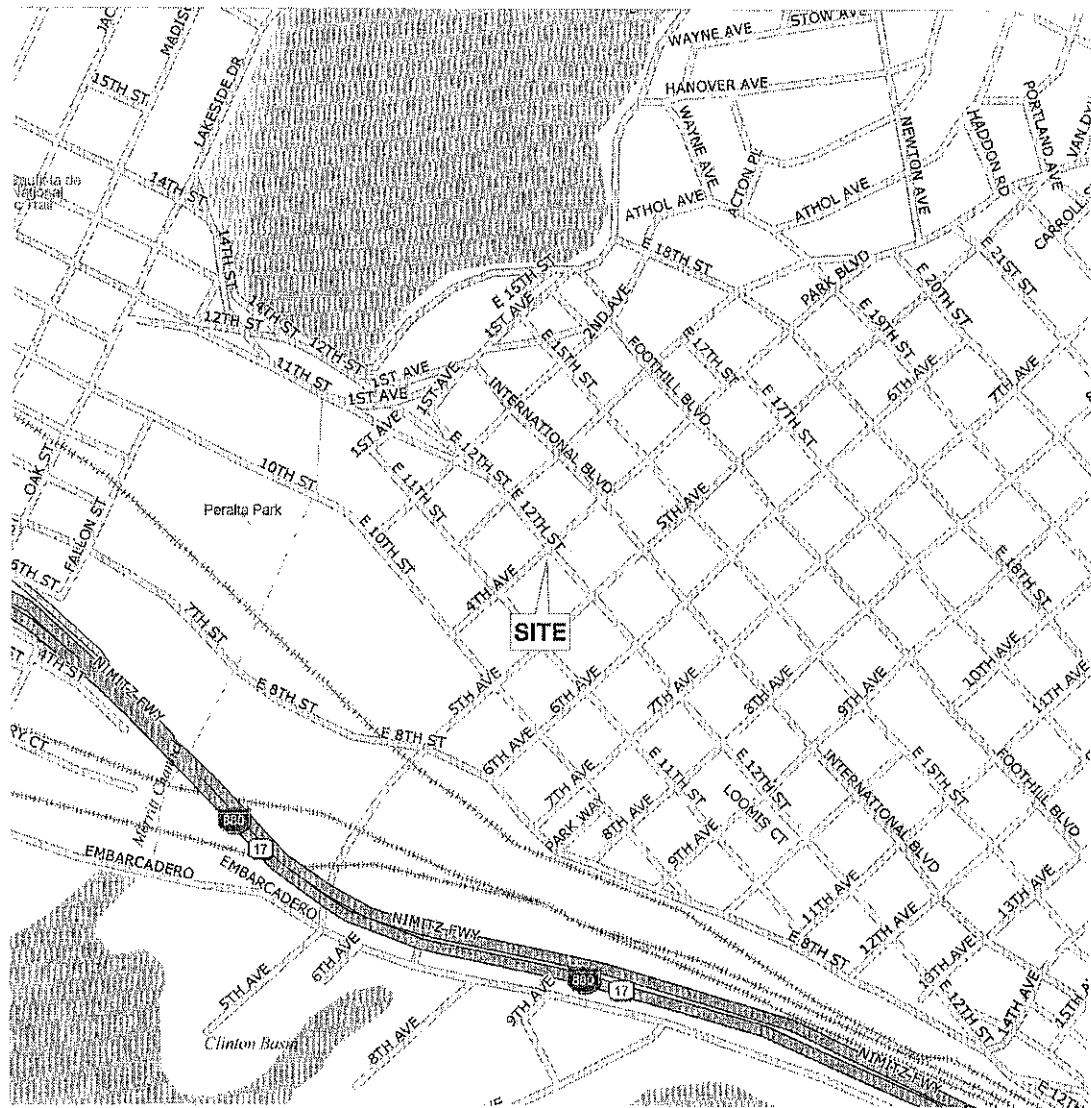
RESULTS AND CONCLUSIONS

Water levels and the gradient data were consistent with historical data. Tables 2a, 2b, 3a, 3b, 4a, and 4b tabulate the analytical data for soil and monitoring well sampling data.

The DPE system operated for 23 days during the third quarter of 2014 from August 15 to September 25, 2014. The system removed approximately 3,264 pounds of TPHg, 17.4 pounds of benzene, and 1.3 pound of MTBE from the vapor phase during this reporting period (Table 5a). Approximately 15 pounds of TPHg, 0.65 pounds of benzene, and 0.13 pounds of MTBE were removed from the groundwater phase during this quarter (Table 5c). The DPE system operated within the rules of the BAAQMD permit issued to the facility.

ECG will continue DPE remediation activities. The next groundwater monitoring event will be in fourth quarter 2014.

FIGURES



0 1,000 2,000

Approximate Scale In Feet
1 inch = 1,000 Feet

FIGURE 1

Project Number:
GHA.19009

Date:
February 9, 2011

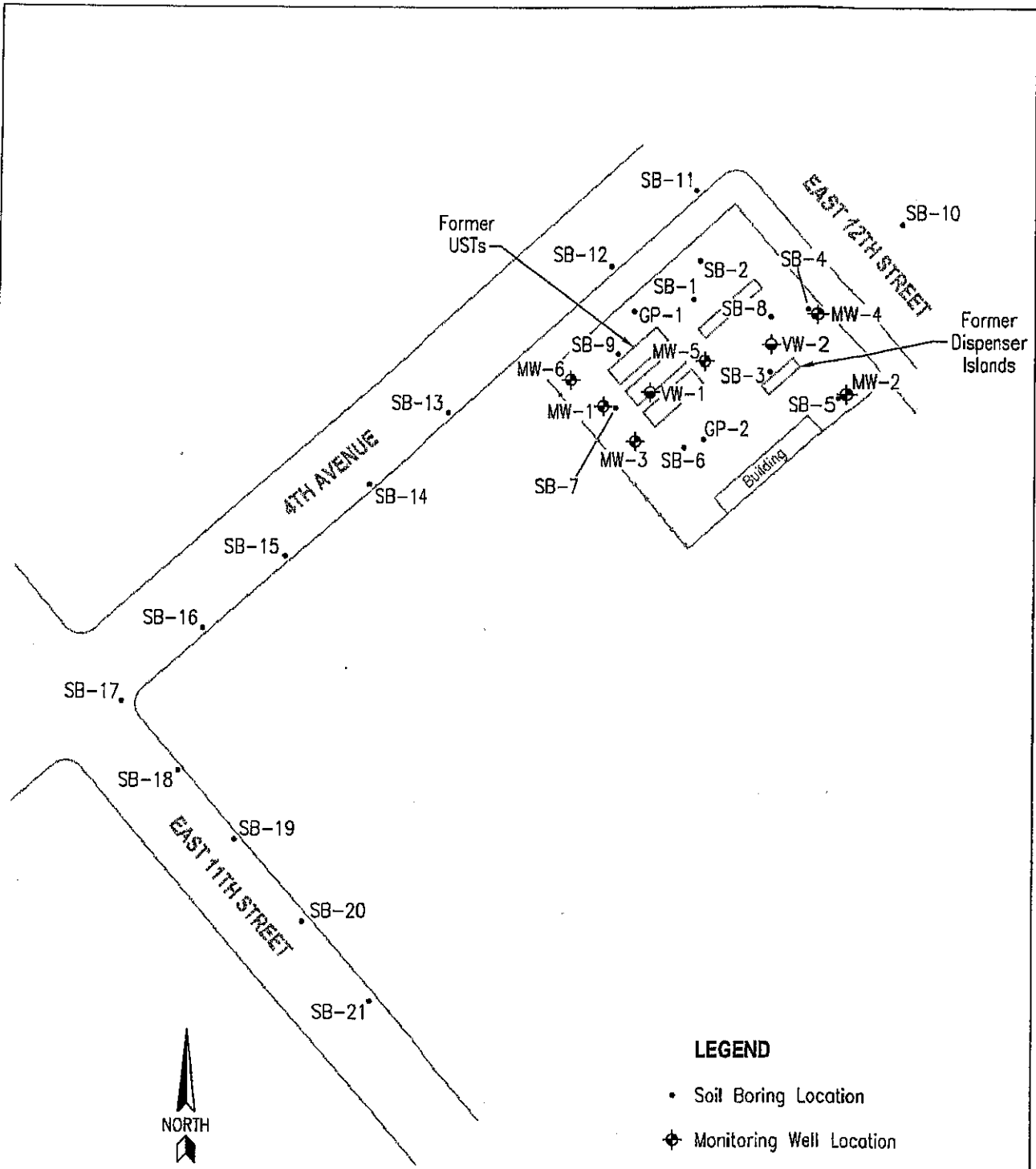
SITE LOCATION MAP

Shore Acre Gas
403 East 12th Street
Oakland, California



**Environmental
Compliance
Group, LLC**


270 Vintage Drive, Turlock, CA 95382
Phone: (209) 664-1035



LEGEND

- Soil Boring Location
- ⊕ Monitoring Well Location
- ⊖ Vapor Extraction Well Location

0 50 100
 Approximate Scale In Feet
 1 inch = 50 feet

<p>FIGURE 2</p>	<p>SITE MAP</p> <p>Shore Acre Gas 403 East 12th Street Oakland, California</p>	 <p>Environmental Compliance Group, LLC 270 Vintage Drive, Turlock, CA 95382 Phone: (209) 664-1035</p>
<p>Project Number: GHA.19009</p>		
<p>Date: January 4, 2012</p>		



LEGEND



- ⊕ Monitoring Well Location
- ⊕ Vapor Extraction Well Location

(20.11) Elevation Of Groundwater Measured In Feet Above Mean Sea Level

— (20.00) — Lines Of Equipotential Measured In Feet Above Mean Sea Level (Dashed Where Inferred)

---> Flow Lines

Gradient Not Calculated; Inward Radial Flow Direction

(NM) Not Measured

0 50 100
Approximate Scale In Feet
1 inch = 50 feet

<p>FIGURE 3</p> <p>Project Number: GHA.19009</p> <p>Date: February 9, 2015</p>	<p>POTENTIOMETRIC SURFACE MAP SEPTEMBER 19, 2014</p> <p>Shore Acre Gas 403 East 12th Street Oakland, California</p>		 <p>Environmental Compliance Group, LLC 270 Vintage Drive, Turlock, CA 95382 Phone: (209) 664-1035</p>



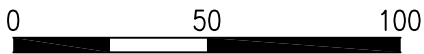
LEGEND



- ⊕ Monitoring Well Location
- ⊖ Vapor Extraction Well Location

(56,000) Concentration Of TPHg In Groundwater Measured In ug/L

(50,000) — Line Of Equal Concentration Of TPHg In Groundwater Measured In ug/L (Dashed Where Inferred)



Approximate Scale In Feet
1 inch = 50 feet

<p>FIGURE 4</p>	<p>TPHg IN GROUNDWATER ISOCONCENTRATION MAP SEPTEMBER 19, 2014 Shore Acre Gas 403 East 12th Street Oakland, California</p>	 <p>Environmental Compliance Group, LLC 270 Vintage Drive, Turlock, CA 95382 Phone: (209) 664-1035</p>
<p>Project Number: GHA.19009</p>		
<p>Date: February 9, 2015</p>		



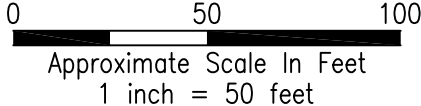
LEGEND



- ⊕ Monitoring Well Location
- ⊖ Vapor Extraction Well Location

(1,000) Concentration Of Benzene In Groundwater Measured In ug/L

(500) ——— Line Of Equal Concentration Of Benzene In Groundwater Measured In ug/L (Dashed Where Inferred)



<p>FIGURE 5</p>	<p>BENZENE IN GROUNDWATER ISOCONCENTRATION MAP</p>	
<p>Project Number: GHA.19009</p>	<p>SEPTEMBER 19, 2014</p>	<p>Compliance Group, LLC</p>
<p>Date: February 9, 2015</p>	<p>Shore Acre Gas 403 East 12th Street Oakland, California</p>	<p>270 Vintage Drive, Turlock, CA 95382 Phone: (209) 664-1035</p>



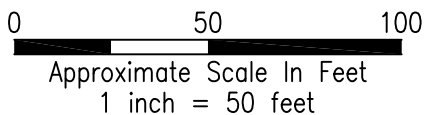
LEGEND



- ⊕ Monitoring Well Location
- ⊖ Vapor Extraction Well Location

(390) Concentration Of MTBE In Groundwater Measured In ug/L

(50) ——— Line Of Equal Concentration Of MTBE In Groundwater Measured In ug/L (Dashed Where Inferred)



<p>FIGURE 6</p>	<p>MTBE IN GROUNDWATER ISOCONCENTRATION MAP SEPTEMBER 19, 2014</p> <p>Shore Acre Gas 403 East 12th Street Oakland, California</p>	 <p>Environmental Compliance Group, LLC</p> <p>270 Vintage Drive, Turlock, CA 95382 Phone: (209) 664-1035</p>
<p>Project Number: GHA.19009</p>		
<p>Date: February 9, 2015</p>		

TABLES

Table 1
Well Construction Details
 Shore Acres Gas
 403 East 12th Street
 Oakland, California

Well ID	Date Installed	TOC Elevation (ft amsl)	Well Depth (ft bgs)	Casing Diameter (inches)	Casing Material	Screen/Filter	Screen Interval (ft bgs)
Monitoring Wells							
MW-1	June 2011	30.81	20	2	PVC	0.020/#3	10-20
MW-2		31.29	20	2	PVC	0.020/#3	10-20
MW-3		31.30	18	2	PVC	0.020/#3	8-18
MW-4		31.21	19	2	PVC	0.020/#3	9-19
MW-5		31.35	20	2	PVC	0.020/#3	10-20
MW-6		30.79	20	2	PVC	0.020/#3	10-20
Dual Phase Extraction Wells							
EW-1	June 2011	31.46	20	4	PVC	0.020/#3	5-20
EW-2		31.43	20	4	PVC	0.020/#3	5-20
EW-3	May 2012	---	20	6	PVC	0.020/#3	5-20
EW-4		---	20	6	PVC	0.020/#3	5-20

Notes:

- TOC - denotes top of casing
- ft - denotes feet
- amsl - denotes above mean sea level
- bgs - denotes below ground surface
- PVC - denotes polyvinyl chloride

Table 2a
Historical Soil Analytical Data
TPH and BTEX
 Shore Acres Gas
 403 East 12th Street
 Oakland, California

Boring ID	Sample Depth (feet)	Collection Date	TPHd (mg/kg)	TPHg (mg/kg)	Benzene (mg/kg)	Toluene (mg/kg)	Ethylbenzene (mg/kg)	Total xylenes (mg/kg)
UST Removal Samples								
SS-D1	2	August 2009	1,800*	3,000	<0.25	0.34	39	180
SS-D2	2		900*	2,400	<0.25	<0.25	36	120
SS-D3	2		460*	1,000	<0.15	<0.15	12	14
SS-D4	2		540*	640	<0.090	1.0	6.1	51
SS-D5	2		320	140	<0.025	<0.025	1.3	3.2
SS-D6	2.0		320*	260	<0.025	0.054	1.0	8.0
SS-J1	2.0		39*	160	<0.025	<0.025	0.71	0.94
SS-Isle	4.0		560*	100	<0.025	<0.025	0.30	0.084
SS-7	18.0		310*	1,600	6.9	76	39	200
Tank 1-SS-1	14.0		830*	2,500	4.2	100	69	360
Tank 1-SS-2	14.0		62*	480	1.8	5.3	14	62
Tank 2-SS-1	14.0		120*	290	0.37	2.4	6.3	31
Tank 2-SS-2	14.0		330*	80	0.074	0.051	1.2	5.8
Tank 3-SS-1	14.0		480*	2,100	2.4	41	62	320
Tank 3-SS-2	14.0		75*	130	0.23	0.26	3.1	15
Soil Borings								
GP-1-15.5	15.5	July 2006	13.0	18.0	0.63	0.052	0.69	0.13
GP-1-18.0	18.0		<1.0	<1.0	0.0056	0.0082	<0.005	0.019
GP-2-12.0	12.0		600	3,600	17	180	98	440
GP-2-20.0	20.0		79	1,100	3.2	41	25	130
SB-1-9.5	9.5	April 2010	---	1,600	5.1	43	30	180
SB-1-24.5	24.5		---	<1.0	<0.005	<0.005	<0.005	<0.010
SB-1-29.5	29.5		---	<1.0	<0.005	<0.005	<0.005	<0.010
SB-2-9.5	9.5		---	2.2	0.26	<0.010	0.066	<0.020
SB-2-24.5	24.5		---	<1.0	<0.005	<0.005	<0.005	<0.010
SB-2-29.5	29.5		---	<1.0	<0.005	<0.005	<0.005	<0.010
SB-3-14.5	14.5		---	17	17	100	42	240
SB-3-24.5	24.5		---	<1.0	<0.005	0.005	<0.005	0.013
SB-3-29.5	29.5		---	<1.0	<0.005	<0.005	<0.005	<0.010
SB-4-14.5	14.5		---	1,700	13	79	28	170
SB-4-19.5	19.5		---	<1.0	<0.005	0.009	<0.005	0.026
SB-4-29.5	29.5		---	<1.0	<0.005	<0.005	<0.005	<0.010
SB-5-14.5	14.5		---	470	<0.20	0.45	6.2	37
SB-5-24.5	24.5		---	<1.0	<0.005	<0.005	<0.005	<0.010
SB-5-29.5	29.5		---	<1.0	<0.005	<0.005	<0.005	<0.010
SB-6-9.5	9.5		---	6,100	21	170	95	580
SB-6-29.5	29.5		---	<1.0	<0.005	<0.005	<0.005	<0.010
SB-6-32	32.0		---	<1.0	<0.005	<0.005	<0.005	<0.010
SB-7-9.5	9.5		---	4,000	12	46	55	360
SB-7-29.5	29.5		---	<1.0	<0.005	<0.005	<0.005	<0.010
SB-7-32	32.0	---	<1.0	<0.005	<0.005	<0.005	<0.010	

Table 2a
Historical Soil Analytical Data
TPH and BTEX
 Shore Acres Gas
 403 East 12th Street
 Oakland, California

Boring ID	Sample Depth (feet)	Collection Date	TPHd (mg/kg)	TPHg (mg/kg)	Benzene (mg/kg)	Toluene (mg/kg)	Ethylbenzene (mg/kg)	Total xylenes (mg/kg)
SB-8-9.5	9.5	April 2010	---	2,500	16	110	63	370
SB-8-24.5	24.5		---	<1.0	<0.005	<0.005	<0.005	<0.010
SB-8-29.5	29.5		---	<1.0	<0.005	<0.005	<0.005	<0.010
SB-9-14.5	14.5		---	390	3.0	3.0	9.1	41
SB-9-29.5	29.5		---	<1.0	<0.005	<0.005	<0.005	<0.010
SB-9-32	32.0		---	<1.0	<0.005	<0.005	<0.005	<0.010
Groundwater Wells								
MW-1-5	5	June 2011	<5.0	<1.0	<0.005	<0.005	<0.005	<0.010
MW-1-15	15		<5.0	18	0.55	<0.050	0.87	1.2
MW-1-20	20		<5.0	<1.0	<0.005	<0.005	<0.005	<0.010
MW-2-5	5		<5.0	<1.0	<0.005	<0.005	<0.005	<0.010
MW-2-10	10		<5.0	69	<0.005	<0.005	<0.005	<0.010
MW-2-15	15		<5.0	50	<0.050	0.48	3.1	19
MW-2-20	20		<5.0	<1.0	<0.005	<0.005	<0.005	<0.010
MW-3-5	5		<5.0	<1.0	<0.010	<0.010	<0.010	<0.020
MW-3-10	10		<15	840	3.4	33	20	140
MW-3-15	15		<5.0	380	3.0	4.5	7.3	41
MW-3-20	20		<5.0	<1.0	0.019	<0.005	0.006	<0.010
MW-4-5	5		<5.0	<1.0	<0.005	<0.005	<0.005	<0.010
MW-4-10	10		<15	420	1.7	2.6	9.2	51
MW-4-15	15		<5.0	3.1	0.036	0.20	0.15	0.95
MW-4-20	20		<5.0	<1.0	0.007	0.017	0.010	0.039
MW-5-5	5		<5.0	76	<0.10	<0.10	1.3	0.76
MW-5-10	10		<15	3,200	4.6	6.5	72	410
MW-5-15	15		<5.0	600	1.3	13	15	110
MW-6-5	5		<5.0	<1.0	<0.005	<0.005	<0.005	<0.010
MW-6-10	10		<5.0	5.1	0.015	<0.010	3.4	1.0
MW-6-15	15		<5.0	<1.0	<0.005	<0.005	<0.005	<0.010
MW-6-20	20		<5.0	<1.0	<0.005	<0.005	<0.005	<0.010
VW-1-5	5		<5.0	34	<0.005	<0.005	0.16	0.31
VW-1-10	10		<15	85	<0.10	<0.10	2.2	0.89
VW-1-15	15	<15	420	2.1	4.1	9.4	55	
VW-1-20	20	<5.0	<1.0	<0.005	<0.005	<0.005	<0.010	
VW-2-5	5	<5.0	<1.0	<0.005	<0.005	<0.005	<0.010	
VW-2-10	10	<5.0	130	<0.10	<0.10	2.9	15	
VW-2-15	15	<15	5,500	29	430	120	910	
VW-2-20	20	<5.0	<1.0	0.14	0.054	0.025	0.14	

Notes:

- TPHd - denotes total petroleum hydrocarbons as diesel
- TPHg - denotes total petroleum hydrocarbons as gasoline
- mg/kg - denotes milligrams per kilogram
- < - denotes less than the detection limit
- denotes no data

Table 2b
Historical Soil Analytical Data
Oxygenates and Lead Scavengers
 Shore Acres Gas
 403 East 12th Street
 Oakland, California

Boring ID	Sample Depth (feet)	Collection Date	DIPE (mg/kg)	ETBE (mg/kg)	MTBE (mg/kg)	TAME (mg/kg)	TBA (mg/kg)	1,2-DCA (mg/kg)	EDB (mg/kg)
UST Removal Samples									
SS-D1	2	August 2009	<0.25	<0.25	<0.25	<0.25	<1.5	---	---
SS-D2	2		<0.25	<0.25	<0.25	<0.25	<1.5	---	---
SS-D3	2		<0.15	<0.15	<0.15	<0.15	<0.70	---	---
SS-D4	2		<0.090	<0.090	<0.090	<0.090	<0.50	---	---
SS-D5	2		<0.025	<0.025	<0.025	<0.025	<0.15	---	---
SS-D6	2		<0.025	<0.025	<0.025	<0.025	<0.15	---	---
SS-J1	2		<0.025	<0.025	<0.025	<0.025	<0.15	---	---
SS-Isle	4		<0.025	<0.025	<0.025	<0.025	<0.15	---	---
SS-7	18		<0.25	<0.25	<0.25	<0.25	<1.5	<0.25	<0.25
Tank 1-SS-1	14		<0.50	<0.50	<0.50	<0.50	<2.5	<0.50	<0.50
Tank 1-SS-2	14		<0.040	<0.040	0.37	<0.040	0.51	<0.040	<0.040
Tank 2-SS-1	14		<0.050	<0.050	0.18	<0.050	0.35	<0.050	<0.050
Tank 2-SS-2	14		<0.025	<0.025	0.090	<0.025	0.16	<0.025	<0.025
Tank 3-SS-1	14		<0.50	<0.50	<0.50	<0.50	<2.5	<0.50	<0.50
Tank 3-SS-2	14	<0.025	<0.025	0.19	<0.025	0.15	<0.025	<0.025	
Soil Borings									
GP-1-15.5	15.5	July 2006	<0.005	<0.005	0.029	<0.005	0.27	---	---
GP-1-18.0	18.0		<0.005	<0.005	0.54	<0.005	0.33	---	---
GP-2-12.0	12.0		<0.50	<0.50	<0.50	<0.50	<2.5	---	---
GP-2-20.0	20.0		<0.025	<0.025	0.041	<0.025	<0.15	---	---
SB-1-9.5	9.5	April 2010	<0.80	<0.80	<0.80	<0.80	<8.0	<0.80	<0.80
SB-1-24.5	24.5		<0.005	<0.005	0.11	<0.005	<0.050	<0.005	<0.005
SB-1-29.5	29.5		<0.005	<0.005	<0.005	<0.005	<0.050	<0.005	<0.005
SB-2-9.5	9.5		<0.010	<0.010	<0.010	<0.010	<0.10	<0.010	<0.010
SB-2-24.5	24.5		<0.005	<0.005	0.053	<0.005	<0.050	<0.005	<0.005
SB-2-29.5	29.5		<0.005	<0.005	<0.005	<0.005	<0.050	<0.005	<0.005
SB-3-14.5	14.5		<2.0	<2.0	<2.0	<2.0	<20	<2.0	<2.0
SB-3-24.5	24.5		<0.005	<0.005	0.10	<0.005	<0.050	<0.005	<0.005
SB-3-29.5	29.5		<0.005	<0.005	0.010	<0.005	<0.050	<0.005	<0.005
SB-4-14.5	14.5		<1.0	<1.0	<1.0	<1.0	<10	<1.0	<1.0
SB-4-19.5	19.5		<0.005	<0.005	<0.005	<0.005	<0.050	<0.005	<0.005
SB-4-29.5	29.5		<0.005	<0.005	<0.005	<0.005	<0.050	<0.005	<0.005
SB-5-14.5	14.5		<0.20	<0.20	<0.20	<0.20	<2.0	<0.20	<0.20
SB-5-24.5	24.5		<0.005	<0.005	<0.005	<0.005	<0.050	<0.005	<0.005
SB-5-29.5	29.5		<0.005	<0.005	<0.005	<0.005	<0.050	<0.005	<0.005
SB-6-9.5	9.5		<2.0	<2.0	<2.0	<2.0	<20	<2.0	<2.0
SB-6-29.5	29.5		<0.005	<0.005	0.20	<0.005	<0.050	<0.005	<0.005
SB-6-32	32.0		<0.005	<0.005	0.18	<0.005	<0.050	<0.005	<0.005
SB-7-9.5	9.5		<1.0	<1.0	4.0	<1.0	<10	<1.0	<1.0
SB-7-29.5	29.5		<0.005	<0.005	0.18	<0.005	<0.050	<0.005	<0.005
SB-7-32	32.0	<0.005	<0.005	0.11	<0.005	<0.050	<0.005	<0.005	

Table 2b
Historical Soil Analytical Data
Oxygenates and Lead Scavengers
 Shore Acres Gas
 403 East 12th Street
 Oakland, California

Boring ID	Sample Depth (feet)	Collection Date	DIPE (mg/kg)	ETBE (mg/kg)	MTBE (mg/kg)	TAME (mg/kg)	TBA (mg/kg)	1,2-DCA (mg/kg)	EDB (mg/kg)
SB-8-9.5	9.5	April 2010	<2.0	<2.0	<2.0	<2.0	<2.0	<2.0	<2.0
SB-8-24.5	24.5		<0.005	<0.005	0.033	<0.005	<0.050	<0.005	<0.005
SB-8-29.5	29.5		<0.005	<0.005	<0.005	<0.005	<0.050	<0.005	<0.005
SB-9-14.5	14.5		<0.20	<0.20	5.5	<0.20	<2.0	<0.20	<0.20
SB-9-29.5	29.5		<0.005	<0.005	0.090	<0.005	0.15	<0.005	<0.005
SB-9-32	32.0		<0.005	<0.005	0.11	<0.005	<0.050	<0.005	<0.005
Groundwater Wells									
MW-1-5	5	June 2011	<0.005	<0.005	0.35	<0.005	0.093	<0.005	<0.005
MW-1-15	15		<0.050	<0.050	1.1	<0.050	<0.50	<0.050	<0.050
MW-1-20	20		<0.005	<0.005	0.31	<0.005	0.58	<0.005	<0.005
MW-2-5	5		<0.005	<0.005	<0.005	<0.005	<0.050	<0.005	<0.005
MW-2-10	10		<0.050	<0.050	<0.050	<0.050	<0.50	<0.050	<0.050
MW-2-15	15		<0.050	<0.050	<0.050	<0.050	<0.50	<0.050	<0.050
MW-2-20	20		<0.005	<0.005	0.006	<0.005	<0.050	<0.005	<0.005
MW-3-5	5		<0.010	<0.010	1.5	<0.010	0.37	<0.010	<0.010
MW-3-10	10		<0.80	<0.80	1.3	<0.80	<8.0	<0.80	<0.80
MW-3-15	15		<0.20	<0.20	3.0	<0.20	<2.0	<0.20	<0.20
MW-3-20	20		<0.005	<0.005	0.036	<0.005	0.16	<0.005	<0.005
MW-4-5	5		<0.005	<0.005	<0.005	<0.005	<0.050	<0.005	<0.005
MW-4-10	10		<0.40	<0.40	<0.40	<0.40	<4.0	<0.40	<0.40
MW-4-15	15		<0.010	<0.010	<0.010	<0.010	<0.10	<0.010	<0.010
MW-4-20	20		<0.005	<0.005	<0.005	<0.005	<0.050	<0.005	<0.005
MW-5-5	5		<0.10	<0.10	<0.10	<0.10	<1.0	<0.10	<0.10
MW-5-10	10		<4.0	<4.0	<4.0	<4.0	<4.0	<4.0	<4.0
MW-5-15	15		<0.40	<0.40	<0.40	<0.40	<4.0	<0.40	<0.40
MW-6-5	5		<0.005	<0.005	<0.005	<0.005	<0.050	<0.005	<0.005
MW-6-10	10		<0.010	<0.010	<0.010	<0.010	<0.10	<0.010	<0.010
MW-6-15	15	<0.005	<0.005	0.026	<0.005	0.088	<0.005	<0.005	
MW-6-20	20	<0.005	<0.005	0.010	<0.005	0.37	<0.005	<0.005	
VW-1-5	5	<0.050	<0.050	<0.050	<0.050	<0.50	<0.050	<0.050	
VW-1-10	10	<0.10	<0.10	<0.10	<0.10	<1.0	<0.10	<0.10	
VW-1-15	15	<0.40	<0.40	0.59	<0.40	<4.0	<0.40	<0.40	
VW-1-20	20	<0.005	<0.005	0.009	<0.005	0.16	<0.005	<0.005	
VW-2-5	5	<0.005	<0.005	0.25	<0.005	0.14	<0.005	<0.005	
VW-2-10	10	<0.10	<0.10	0.33	<0.10	<1.0	<0.10	<0.10	
VW-2-15	15	<4.0	<4.0	<4.0	<4.0	<4.0	<4.0	<4.0	
VW-2-20	20	<0.005	<0.005	0.008	<0.005	0.26	<0.005	<0.005	

Notes:

mg/kg - denotes milligrams per kilogram	MTBE - denotes methyl tertiary butyl ether
< - denotes less than the detection limit	DIPE - denotes di-isopropyl ether
--- - denotes not analyzed/applicable	ETBE - denotes ethyl tertiary butyl ether
DCA - denotes dichloroethane	TAME - denotes tertiary amyl ether
EDB - denotes ethylene dibromide	TBA - denotes tertiary butyl alcohol

Table 3a
Grab Groundwater Sample Results
TPH and BTEX
 Shore Acres Gas
 403 East 12th Street
 Oakland, California

Sample ID	Collection Date	TPHd (ug/L)	TPHg (ug/L)	Benzene (ug/L)	Toluene (ug/L)	Ethyl-benzene (ug/L)	Total Xylenes (ug/L)
Excavation							
Pit Sample 1	August 2009	21,000	21,000	3,800	1,000	1,200	3,700
Direct Push Grab Groundwater Samples							
SB-1	April 2010	---	60	2.9	6.7	2.1	9.7
SB-2		---	<50	<0.5	<0.5	<0.5	<1.0
SB-3		---	170	1.5	11	4.8	27
SB-4		---	6,500	78	440	190	960
SB-5		---	<50	<0.5	<0.5	<0.5	<1.0
SB-6		---	440	<20	<20	<20	<40
SB-7		---	270	<12	<12	<12	<25
SB-8		---	<50	0.6	1.3	0.6	3.3
SB-9		---	<50	<10	<10	<10	<20
SB-10	December 2011	---	<50	<0.5	<0.5	<0.5	<1.0
SB-11		---	2,300	83	1.9	140	43
SB-12		---	4,700	620	290	84	400
SB-13		---	400	51	2.4	4.2	9.7
SB-14		---	<50	1.7	<0.5	2.1	<1.0
SB-15		---	320	32	0.7	33	25
SB-16		---	4,800	1,600	10	49	<20
SB-17		---	990	290	7.2	27	4.3
SB-18		---	560	8.7	4.9	23	83
SB-19		---	260	7.1	<0.5	16	7.0
SB-21		---	<50	<0.5	<0.5	<0.5	<1.0

Notes:

- TPHd - denotes total petroleum hydrocarbons as diesel
- TPHg - denotes total petroleum hydrocarbons as gasoline
- ug/L - denotes micrograms per liter
- < - denotes less than the detection limit
- - denotes not analyzed/applicable

Table 3b
Grab Groundwater Sample Results
Oxygenates and Lead Scavengers
 Shore Acres Gas
 403 East 12th Street
 Oakland, California

Sample ID	Collection Date	DIPE (ug/L)	ETBE (ug/L)	MTBE (ug/L)	TAME (ug/L)	TBA (ug/L)	1,2-DCA (ug/L)	EDB (ug/L)
Excavation								
Water	February 2000	<10	<10	15,000	39	17,000	<10	<10
Direct Push Grab Groundwater Samples								
SB-1	April 2010	<0.5	<0.5	14	<0.5	<5.0	<0.5	<0.5
SB-2		<0.5	<0.5	45	<0.5	<5.0	<0.5	<0.5
SB-3		<0.5	<0.5	110	<0.5	32	<0.5	<0.5
SB-4		<5.0	<5.0	<5.0	<5.0	<50	<5.0	<5.0
SB-5		<0.5	<0.5	0.6	<0.5	<5.0	<0.5	<0.5
SB-6		<20	<20	4,000	<20	<200	<20	<20
SB-7		<12	<12	2,500	<12	<120	<12	<12
SB-8		<0.5	<0.5	26	<0.5	98	<0.5	<0.5
SB-9		<10	<10	1,800	<10	5,300	<10	<10
SB-10	December 2011	<0.5	<0.5	<0.5	<0.5	<5.0	<0.5	<0.5
SB-11		<1.0	<1.0	22	<1.0	140	<1.0	<1.0
SB-12		<5.0	<5.0	100	<5.0	550	<5.0	<5.0
SB-13		<2.0	<2.0	39	<2.0	3,900	<2.0	<2.0
SB-14		<0.5	<0.5	<0.5	<0.5	<5.0	<0.5	<0.5
SB-15		<0.5	<0.5	<0.5	<0.5	<5.0	<0.5	<0.5
SB-16		<10	<10	<10	<10	<100	<10	<10
SB-17		<2.0	<2.0	<2.0	<2.0	<20	<2.0	<2.0
SB-18		<0.5	<0.5	<0.5	<0.5	<5.0	<0.5	<0.5
SB-19		<0.5	<0.5	<0.5	<0.5	<5.0	<0.5	<0.5
SB-21		<0.5	<0.5	<0.5	<0.5	<5.0	<0.5	<0.5

Notes:

ug/L - denotes micrograms per liter	DIPE - denotes di-isopropyl ether
< - denotes less than the detection limit	ETBE - denotes ethyl tertiary butyl ether
DCA - denotes dichloroethane	TAME - denotes tertiary amyl ether
EDB - denotes ethylene dibromide	TBA - denotes tertiary butyl alcohol
MTBE - denotes methyl tertiary butyl ether	

Table 4a
Monitoring Well Data
Water Level, TPH, and BTEX
 Shore Acres Gas
 403 East 12th Street
 Oakland, California

Well ID TOC	Date Measured	Depth to Groundwater (ft bgs)	Groundwater Elevation (ft amsl)	TPHd (ug/L)	TPHg (ug/L)	Benzene (ug/L)	Toluene (ug/L)	Ethyl-benzene (ug/L)	Total Xylenes (ug/L)
Monitoring Wells									
MW-1	6/23/2011	10.46	20.35	<250	23,000	4,500	820	1,700	3,800
	9/22/2011	12.13	18.68	<50	21,000	4,000	1,500	980	3,000
	12/11/2011	11.69	19.12	---	23,000	2,900	1,000	720	3,000
	3/30/2012	Inaccessible							
	6/1/2012	11.04	19.77	---	40,000	4,100	800	2,700	6,100
	9/14/2012	12.96	17.85	<100	20,000	2,700	160	830	2,600
	3/27/2013	8.57	22.24	<50	15,000	1,700	150	400	830
	5/20/2013	8.57	22.24	<100	22,000	2,800	870	560	2,000
	9/4/2013	9.29	21.52	<250	12,000	2,900	130	190	370
	12/6/2013	9.11	21.70	<120	15,000	3,000	780	580	2,400
	6/27/2014	8.92	21.89	<120	15,000	2,500	280	2,400	2,400
	9/19/2014	10.98	19.83	---	11,000	530	190	460	950
MW-2	6/23/2011	10.70	20.59	<250	13,000	1,000	160	370	1,600
	9/22/2011	12.42	18.87	<50	12,000	300	130	470	1,400
	12/11/2011	11.98	19.31	---	8,300	170	120	450	1,500
	3/30/2012	8.55	22.74	<250	17,000	850	700	710	2,900
	6/1/2012	11.26	20.03	---	5,300	830	260	630	1,700
	9/14/2012	13.11	18.18	<50	10,000	260	190	600	1,900
	3/27/2013	9.43	21.86	<50	12,000	440	98	320	810
	5/20/2013	9.41	21.88	<100	6,600	300	74	190	500
	9/4/2013	10.11	21.18	<100	5,300	300	50	180	280
	12/6/2013	9.93	21.36	<50	4,300	280	39	140	160
	6/27/2014	9.93	21.36	<50	1,300	200	22	85	160
	9/19/2014	12.49	18.80	---	990	42	12	97	110
MW-3	6/23/2011	10.79	20.51	<250	55,000	15,000	3,600	2,000	4,300
	9/22/2011	12.60	18.70	<250	77,000	15,000	3,900	1,700	4,900
	12/11/2011	12.13	19.17	---	64,000	12,000	3,100	1,600	4,500
	3/30/2012	7.90	23.40	<120	100,000	17,000	10,000	2,000	8,400
	6/1/2012	11.47	19.83	---	83,000	15,000	6,000	2,900	10,000
	9/14/2012	13.42	17.88	<200	69,000	10,000	1,500	1,800	5,900
	3/27/2013	9.15	22.15	<200	63,000	7,100	2,100	1,900	7,700
	5/20/2013	9.16	22.14	<250	80,000	9,700	2,900	2,400	8,600
	9/4/2013	9.87	21.43	<250	47,000	7,200	470	1,200	5,000
	12/6/2013	9.69	21.61	<50	19,000	5,600	240	520	1,600
	6/27/2014	9.49	21.81	<50	12,000	5,800	240	860	760
	9/19/2014	11.62	19.68	---	9,500	610	160	220	400

Table 4a
Monitoring Well Data
Water Level, TPH, and BTEX
 Shore Acres Gas
 403 East 12th Street
 Oakland, California

Well ID TOC	Date Measured	Depth to Groundwater (ft bgs)	Groundwater Elevation (ft amsl)	TPHd (ug/L)	TPHg (ug/L)	Benzene (ug/L)	Toluene (ug/L)	Ethylbenzene (ug/L)	Total Xylenes (ug/L)		
MW-4	6/23/2011	10.62	20.59	<250	47,000	3,500	7,100	2,300	11,000		
	9/22/2011	12.25	18.96	<250	46,000	2,000	2,400	1,100	5,300		
	12/11/2011	11.89	19.32	---	46,000	2,100	3,400	1,800	7,000		
	3/30/2012	8.51	22.70	<250	60,000	6,800	8,200	1,200	5,700		
	6/1/2012	11.14	20.07	---	72,000	9,700	8,500	2,300	9,000		
	9/14/2012	12.97	18.24	<50	15,000	940	880	450	1,700		
	3/27/2013	9.05	22.16	<50	25,000	1,800	2,200	660	2,500		
	5/20/2013	9.03	22.18	<250	18,000	1,600	1,700	470	1,900		
	9/4/2013	9.68	21.53	<50	15,000	510	410	260	820		
	12/6/2013	9.54	21.67	<50	9,600	630	650	240	970		
	6/27/2014	9.58	21.63	<50	3,300	550	2,900	200	420		
	9/19/2014	11.61	19.60	---	2,100	110	54	92	210		
	MW-5	6/23/2011	10.12	21.23	<250	130,000	7,100	25,000	13,000	94,000	
9/22/2011		12.53	18.82	<250	120,000	6,900	7,600	3,800	17,000		
12/11/2011		12.09	19.26	---	110,000	7,800	14,000	4,200	20,000		
3/30/2012		8.06	23.29	Sheen - not sampled							
6/1/2012		11.38	19.97	Sheen - not sampled							
9/14/2012		13.61	17.74	Free product - not sampled							
3/27/2013		9.21	22.14	Free product - not sampled							
5/20/2013		9.17	22.18	Free product - not sampled							
9/4/2013		9.70	21.65	Free product - not sampled							
12/6/2013		9.67	21.68	<250	81,000	10,000	13,000	5,500	21,000		
6/27/2014		9.51	21.84	Free product - not sampled							
9/19/2014		12.91	18.44	---	56,000	1,000	270	1,000	4,100		
MW-6		6/23/2011	10.43	20.36	<250	11,000	2,400	120	480	840	
	9/22/2011	12.10	18.69	<50	15,000	1,500	270	880	2,500		
	12/11/2011	11.69	19.10	---	13,000	660	190	610	1,500		
	3/30/2012	7.50	23.29	<250	9,500	1,200	160	250	520		
	6/1/2012	11.04	19.75	---	23,000	2,200	220	1,300	3,000		
	9/14/2012	12.96	17.83	<50	14,000	1,000	86	420	1,200		
	3/27/2013	---	---	Inaccessible							
	5/20/2013	---	---	Inaccessible							
	9/4/2013	9.19	21.60	<100	9,500	1,400	120	1,400	1,600		
	12/6/2013	9.03	21.76	<100	14,000	1,200	24	1,400	810		
	6/27/2014	8.80	21.99	<100	9,800	1,200	75	2,800	530		
	9/19/2014	10.68	20.11	---	6,500	240	21	490	110		

Table 4a
Monitoring Well Data
Water Level, TPH, and BTEX
 Shore Acres Gas
 403 East 12th Street
 Oakland, California

Well ID TOC	Date Measured	Depth to Groundwater (ft bgs)	Groundwater Elevation (ft amsl)	TPHd (ug/L)	TPHg (ug/L)	Benzene (ug/L)	Toluene (ug/L)	Ethyl-benzene (ug/L)	Total Xylenes (ug/L)	
DPE Wells										
EW-1	6/28/2011	---	---	---	20,000	2,000	490	1,000	2,400	
	9/22/2011	12.55	18.71	<120	39,000	3,900	610	1,400	4,600	
	12/11/2011	12.09	19.17	---	27,000	2,600	270	1,400	4,400	
	3/30/2012	8.06	23.20	<120	21,000	3,100	160	910	2,300	
	6/1/2012	11.42	19.84	---	21,000	2,800	100	1,200	3,100	
	9/14/2012	13.37	17.89	<50	22,000	1,900	50	1,000	2,600	
	3/27/2013	9.06	22.20	<50	15,000	630	36	360	590	
	5/20/2013	9.06	22.20	<100	11,000	600	28	210	350	
	9/4/2013	9.77	21.49	<50	9,300	610	19	170	250	
	12/6/2013	9.63	21.83	<100	11,000	740	17	260	340	
	6/27/2014	9.55	21.91	<100	12,000	1,400	210	1,900	2,400	
	9/19/2014	12.41	19.05	---	28,000	1,000	450	1,400	3,900	
	EW-2	6/28/2011	---	---	---	33,000	3,100	2,000	790	3,500
		9/22/2011	12.50	18.90	<250	66,000	2,400	4,500	2,000	11,000
	12/11/2011	12.12	19.28	---	70,000	2,800	6,900	2,700	13,000	
	3/30/2012	8.48	22.92	<250	57,000	5,800	5,500	1,200	5,400	
	6/1/2012	11.40	20.00	---	82,000	8,800	8,600	3,300	13,000	
	9/14/2012	13.27	18.13	<100	32,000	2,600	2,400	1,000	4,500	
	3/27/2013	9.24	22.16	<100	18,000	940	790	390	1,700	
	5/20/2013	9.21	22.19	<50	10,000	540	430	220	790	
	9/4/2013	9.88	21.52	<250	10,000	680	580	480	1,700	
	12/6/2013	9.96	21.47	<50	13,000	620	380	350	1,600	
	6/27/2014	9.85	21.58	<50	27,000	3,200	5,600	1,200	8,000	
	9/19/2014	16.80	14.63	---	18,000	690	1,300	360	2,400	
EW-3	5/20/2013	8.82	---	<50	1,300	430	540	280	1,000	
	9/4/2013	9.49	---	<100	9,800	480	220	560	1,800	
	12/6/2013	10.05	---	<50	10,000	810	580	260	1,100	
	6/27/2014	9.90	---	<50	27,000	4,300	4,300	1,200	7,900	
	9/19/2014	13.00	---	---	15,000	670	650	530	2,400	
EW-4	5/20/2013	9.12	---	<50	8,100	720	160	94	430	
	9/4/2013	9.85	---	<250	11,000	990	580	310	1,200	
	12/6/2013	9.62	---	<50	4,400	150	170	140	670	
	6/27/2014	9.47	---	<50	8,400	1,500	940	540	2,100	
	9/19/2014	12.48	---	---	9,000	680	1,600	450	3,000	

Table 4a
Monitoring Well Data
Water Level, TPH, and BTEX
 Shore Acres Gas
 403 East 12th Street
 Oakland, California

Well ID	Date Measured	Depth to Groundwater (ft bgs)	Groundwater Elevation (ft amsl)	TPHd (ug/L)	TPHg (ug/L)	Benzene (ug/L)	Toluene (ug/L)	Ethyl-benzene (ug/L)	Total Xylenes (ug/L)
TOC									

Notes:

- TOC - denotes top of casing elevation
- TPHg - denotes total petroleum hydrocarbons as gasoline
- TPHd - denotes total petroleum hydrocarbons as diesel
- ft bgs - denotes feet below top of casing
- ft amsl - denotes feet above mean sea level
- ug/L - denotes micrograms per liter
- < - denotes less than the detection limit
- - denotes not available/applicable
- FLH - denotes floating liquid hydrocarbons
- * - denotes less than six inches of water and considered dry

Table 4b
Monitoring Well Data
Oxygenates and Lead Scavengers
 Shore Acres Gas
 403 East 12th Street
 Oakland, California

Well ID TOC	Date Measured	DIPE (ug/L)	ETBE (ug/L)	MTBE (ug/L)	TAME (ug/L)	TBA (ug/L)	1,2-DCA (ug/L)	EDB (ug/L)	
Monitoring Wells									
MW-1	6/23/2011	<25	<25	3,000	<25	3,900	<25	<25	
	9/22/2011	<50	<50	2,600	<50	2,500	<50	<50	
	12/11/2011	<20	<20	1,800	<20	1,600	<20	<20	
	3/30/2012	Inaccessible							
	6/1/2012	<20	<20	2,800	<20	1,300	<20	<20	
	9/14/2012	<10	<10	2,200	<10	1,600	<10	<10	
	3/27/2013	<0.5	<0.5	590	<0.5	350	<0.5	<0.5	
	5/20/2013	<10	<10	1,100	<10	620	<10	<10	
	9/4/2013	<10	<10	240	<10	<100	<10	<10	
	12/6/2013	<5.0	<5.0	350	<50	<100	<5.0	<5.0	
	6/27/2014	<10	<10	97	<10	<100	<10	<10	
	9/19/2014	<10	<10	150	<10	<100	<10	<10	
MW-2	6/23/2011	<10	<10	240	<10	640	<10	<10	
	9/22/2011	<5.0	<5.0	110	<5.0	260	<5.0	<5.0	
	12/11/2011	<2.5	<2.5	45	<2.5	110	<2.5	<2.5	
	3/30/2012	<5.0	<5.0	140	<5.0	490	<5.0	<5.0	
	6/1/2012	<5.0	<5.0	180	<5.0	490	<5.0	<5.0	
	9/14/2012	<5.0	<5.0	65	<5.0	190	<5.0	<5.0	
	3/27/2013	<0.5	<0.5	120	<0.5	930	<0.5	<0.5	
	5/20/2013	<2.5	<2.5	120	<2.5	1,800	<2.5	<2.5	
	9/4/2013	<5.0	<5.0	100	<5.0	780	<5.0	<5.0	
	12/6/2013	<5.0	<5.0	63	<5.0	230	<5.0	<5.0	
	6/27/2014	<5.0	<5.0	21	<5.0	<50	<5.0	<5.0	
	9/19/2014	<5.0	<5.0	16	<5.0	<50	<5.0	<5.0	
MW-3	6/23/2011	<100	<100	8,200	<100	6,400	<100	<100	
	9/22/2011	<100	<100	11,000	<100	2,800	<100	<100	
	12/11/2011	<100	<100	7,400	<100	1,800	<100	<100	
	3/30/2012	<100	<100	13,000	<100	<1,000	<100	<100	
	6/1/2012	<50	<50	12,000	<50	<500	<50	<50	
	9/14/2012	<50	<50	9,400	<50	<500	<50	<50	
	3/27/2013	<0.5	<0.5	7,900	<0.5	3,800	<0.5	<0.5	
	5/20/2013	<25	<25	10,000	<25	5,000	<25	<25	
	9/4/2013	<25	<25	5,300	<25	2,100	<25	<25	
	12/6/2013	<25	<25	1,400	<25	640	<25	<25	
	6/27/2014	<25	<25	520	<25	260	<25	<25	
	9/19/2014	<25	<25	390	<25	370	<25	<25	

Table 4b
Monitoring Well Data
Oxygenates and Lead Scavengers
 Shore Acres Gas
 403 East 12th Street
 Oakland, California

Well ID TOC	Date Measured	DIPE (ug/L)	ETBE (ug/L)	MTBE (ug/L)	TAME (ug/L)	TBA (ug/L)	1,2-DCA (ug/L)	EDB (ug/L)	
MW-4	6/23/2011	<50	<50	<50	<50	<500	<50	<50	
	9/22/2011	<25	<25	<25	<25	<250	<25	<25	
	12/11/2011	<25	<25	<25	<25	<250	<25	<25	
	3/30/2012	<50	<50	56	<50	<500	<50	<50	
	6/1/2012	<50	<50	180	<50	<500	<50	<50	
	9/14/2012	<20	<20	<20	<20	<200	<20	<20	
	3/27/2013	<0.5	<0.5	77	<0.5	450	<0.5	<0.5	
	5/20/2013	<10	<10	61	<10	360	<10	<10	
	9/4/2013	<2.5	<2.5	17	<2.5	64	<2.5	<2.5	
	12/6/2013	<2.5	<2.5	6.6	<2.5	<25	<2.5	<2.5	
	6/27/2014	<2.5	<2.5	<2.5	<2.5	<25	<2.5	<2.5	
	9/19/2014	<2.5	<2.5	<2.5	<2.5	<25	<2.5	<2.5	
	MW-5	6/23/2011	<120	<120	440	<120	<1,200	<120	<120
9/22/2011		<50	<50	670	<50	1,500	<50	<50	
12/11/2011		<120	<120	690	<120	1,600	<120	<120	
3/30/2012		Sheen - not sampled							
6/1/2012		Sheen - not sampled							
9/14/2012		Free product - not sampled							
3/27/2013		Free product - not sampled							
5/20/2013		Free product - not sampled							
9/4/2013		Free product - not sampled							
12/6/2013		<25	<25	270	<25	<250	<25	<25	
6/27/2014		Free product - not sampled							
9/19/2014		<25	<25	75	<25	<250	<25	<25	
MW-6		6/23/2011	<25	<25	1,100	<25	4,000	<25	<25
	9/22/2011	<12	<12	600	<12	2,800	<12	<12	
	12/11/2011	<10	<10	290	<10	1,300	<10	<10	
	3/30/2012	<10	<10	990	<10	3,500	<10	<10	
	6/1/2012	<10	<10	1,400	<10	2,200	<10	<10	
	9/14/2012	<10	<10	580	<10	2,000	<10	<10	
	3/27/2013	Inaccessible							
	5/20/2013	Inaccessible							
	9/4/2013	<5.0	<5.0	29	<5.0	140	<5.0	<5.0	
	12/6/2013	<2.5	<2.5	12	<2.5	<25	<2.5	<2.5	
	6/27/2014	<2.5	<2.5	4.9	<2.5	<25	<2.5	<2.5	
	9/19/2014	<2.5	<2.5	7.1	<2.5	<25	<2.5	<2.5	

Table 4b
Monitoring Well Data
Oxygenates and Lead Scavengers
 Shore Acres Gas
 403 East 12th Street
 Oakland, California

Well ID TOC	Date Measured	DIPE (ug/L)	ETBE (ug/L)	MTBE (ug/L)	TAME (ug/L)	TBA (ug/L)	1,2-DCA (ug/L)	EDB (ug/L)
DPE Wells								
EW-1	6/28/2011	<25	<25	1,500	<25	5,300	<25	<25
	9/22/2011	<50	<50	640	<50	1,800	<50	<50
	12/11/2011	<25	<25	490	<25	1,000	<25	<25
	3/30/2012	<20	<20	370	<20	1,100	<20	<20
	6/1/2012	<25	<25	500	<25	1,700	<25	<25
	9/14/2012	<10	<10	370	<10	1,400	<10	<10
	3/27/2013	<0.5	<0.5	270	<0.5	560	<0.5	<0.5
	5/20/2013	<5.0	<5.0	250	<5.0	560	<5.0	<5.0
	9/4/2013	<2.5	<2.5	220	<2.5	590	<2.5	<2.5
	12/6/2013	<2.5	<2.5	130	<2.5	270	<2.5	<2.5
	6/27/2014	<10	<10	40	<10	<100	<10	<10
	9/19/2014	<20	<20	300	<20	<200	<20	<20
EW-2	6/28/2011	<25	<25	670	<25	4,100	<25	<25
	9/22/2011	<50	<50	740	<50	1,600	<50	<50
	12/11/2011	<50	<50	540	<50	880	<50	<50
	3/30/2012	<50	<50	1,800	<50	2,800	<50	<50
	6/1/2012	<50	<50	2,600	<50	3,300	<50	<50
	9/14/2012	<20	<20	1,100	<20	2,400	<20	<20
	3/27/2013	<0.5	<0.5	360	<0.5	1,800	<0.5	<0.5
	5/20/2013	<2.5	<2.5	390	<2.5	2,600	<2.5	<2.5
	9/4/2013	<5.0	<5.0	460	<5.0	1,400	<5.0	<5.0
	12/6/2013	<10	<10	210	<10	560	<10	<10
	6/27/2014	<10	<10	110	<10	<50	<10	<10
	9/19/2014	<25	<25	96	<25	<250	<25	<25
EW-3	5/20/2013	<2.5	<2.5	140	<2.5	1,100	<2.5	<2.5
	9/4/2013	<2.5	<2.5	120	<2.5	650	<2.5	<2.5
	12/6/2013	<2.5	<2.5	96	<2.5	690	<2.5	<2.5
	6/27/2014	<5.0	<5.0	150	<5.0	360	<5.0	<5.0
	9/19/2014	<25	<25	75	<25	<250	<25	<25
EW-4	5/20/2013	<5.0	<5.0	480	<5.0	1,900	<5.0	<5.0
	9/4/2013	<5.0	<5.0	220	<5.0	1,300	<5.0	<5.0
	12/6/2013	<5.0	<5.0	58	<5.0	430	<5.0	<5.0
	6/27/2014	<2.5	<2.5	82	<2.5	65	<2.5	<2.5
	9/19/2014	<20	<20	120	<20	520	<20	<20

Notes:

- | | |
|--|---|
| ug/L - denotes micrograms per liter | DIPE - denotes di-isopropyl ether |
| <- denotes less than the detection limit | ETBE - denotes ethyl tertiary butyl ether |
| DCA - denotes dichloroethane | TAME - denotes tertiary amyl ether |
| EDB - denotes ethylene dibromide | TBA - denotes tertiary butyl alcohol |
| MTBE - denotes methyl tertiary butyl ether | --- denotes no data available |

Table 5a
Soil Vapor Extraction System Performance Calculations

Shore Acres Gas
 403 East 12th Street
 Oakland, California

Date	Meter* (hours)	Influent Flow Rate (scfm)	Influent Sample Results			Extraction Rates (lb/day)			Cumulative Extraction (lb)		
			TPHg (ppmv)	Benzene (ppmv)	MTBE (ppmv)	TPHg (lb/day)	Benzene (lb/day)	MTBE (lb/day)	TPHg (lb)	Benzene (lb)	MTBE (lb)
05/27/14	590.3	106.0	2,500	14	0.73	112	0.5	0.0	2,745	11.4	0.7
06/17/14	961.5	125.0	40	1.4	0.18	2.1	0.05	0.0	2,778	12.3	0.8
06/27/14	988.2	Unit shut down for Carbon Change Out									
08/15/14	988.2	Restart Unit									
08/19/14	992.6	125.0	33	0.79	0.13	1.7	0.03	0.0	2,780	12.3	0.8
09/25/14	1,535.7	163.0	2,100	15	< 1.0	144	0.77	0.1	6,042	29.7	2.1

MW_{TPHg} = Molecular Weight of TPHg = 105

MW_{MTBE} = Molecular Weight of Methyl tert-butyl ether = 88.15

MW_{Benzene} = Molecular Weight of Benzene = 78.11

days of operation during quarter 22.8

ft³ = cubic feet

min = minutes

lb/day = pounds per day

ppmv = parts per million by volume = ft³ / 1x10⁶ ft³

scfm = standard cubic feet per minute

NS = not sampled

NA = not analyzed

NC = not calculated

$$\text{Extraction rate} = (\text{flow rate}(\text{ft}^3/\text{min}) \times \text{concentration}(\text{ft}^3 / 1 \times 10^6 \text{ ft}^3) \times \text{MW}_{\text{TPHg}}(\text{lb}/\text{lb-mol}) \times 1440 \text{ min}/\text{day}) / (359 \text{ ft}^3/\text{lb-mol}^*)$$

* - Hour meter readings does not match field data sheets because hour meter was 5472.6 when unit was started.

Table 5b
Soil Vapor Extraction System Destruction Efficiency and Emission Calculations
 Shore Acres Gas
 403 East 12th Street
 Oakland, California

Date	Stack Flow Rate (scfm)	Stack Sample Results (ppmv)			Emission Rates (lb/day)			Destruction Efficiency (%)		
		TPHg	Benzene	MTBE	TPHg	Benzene	MTBE	TPHg	Benzene	MTBE
05/27/14	106.0	< 5.0	< 0.050	< 0.10	< 0.2	< 0.002	< 0.004	100.0	100.0	100.0
06/17/14	125.0	< 5.0	< 0.050	< 0.10	< 0.2	< 0.002	< 0.004	100.0	100.0	100.0
08/19/14	125.0	< 5.0	< 0.050	< 0.10	< 0.2	< 0.002	< 0.004	100.0	100.0	100.0
09/25/14	163.0	< 5.0	< 0.050	< 0.10	< 0.3	< 0.003	< 0.006	100.0	100.0	100.0

Note: "<" indicates analytical method detection limit; method detection limits are used as stack concentrations to estimate emission rates. Destruction efficiency is assumed to be 100%.

Sample Calculations

Emission rate = flow rate(ft³/min) x concentration (ft³ / 1x10⁶ ft³) x MW (lb/lb-mole)/359 (ft³/lb-mole*) x 1440 min/day

Destruction Efficiency = [(Extraction rate - Emission rate)/Extraction rate] x 100%

Stack flow = Catox Influent + Natural Gas flow rate

lb/day = pounds per day

ft³ = cubic feet

ppmv = parts per million by volume = ft³ / 1x10⁶ ft³

NS = not sampled

min = minutes

scfm = standard cubic feet per minute

NA = Not applicable

Table 5c
Groundwater Treatment System Performance Data
 Shore Acres Gas
 403 East 12th Street
 Oakland, California

DATE	TOTAL FLOW (gallons)	AVG. PERIOD FLOW RATE (gallons/min)	Influent Water Analytical Results			Estimated Removal Rates			Estimated Removal (Period)			Estimated Removal (Cumulative)		
			TPHg (ug/L)	Benzene (ug/L)	MTBE (ug/L)	TPHg (lb/day)	Benzene (lb/day)	MTBE (lb/day)	TPHg (pounds)	Benzene (pounds)	MTBE (pounds)	TPHg (pounds)	Benzene (pounds)	MTBE (pounds)
04/30/14	189,810													
05/27/14	358,850	2.02	18,600	2,600	96	0.45	0.063	0.002	26.21	3.66	0.13	26.21	3.66	0.13
08/19/14	360,060													
09/25/14	463,050	1.93	17,500	760	148	0.41	0.018	0.003	15.03	0.65	0.13	41.24	4.32	0.26

104,200 total gallons pumped during current reporting period
 1737 average gallons per day during current reporting period
 1.2 average gallons per minute during current reporting period

15.03 0.65 0.13

Notes:

Influent concentrations are an average of extraction wells EW-1 through EW-4

Groundwater flow meter was 189,910 when unit was started up

Sample Calculations:

Extraction/disposal rate = flow rate(gallons/min) * concentration (ug/L) * 3.785 L/gallon * lb/454,000,000 ug * 1440 min/day

NC - Not calculated

NS - Not Sampled

— - Not Analyzed

MTBE - Methyl tertiary butyl ether

TPHg - Total Petroleum Hydrocarbons as gasoline

TBA - Tertiary butyl ether

lb/day - pounds per day

ug/L - micrograms per liter

APPENDICES

ENVIRONMENTAL COMPLIANCE GROUP, LLC

STANDARD OPERATING AND SAFETY AND LOSS CONTROL PROCEDURES

1.0 SOIL BORING/DRILLING SAMPLE COLLECTION AND CLASSIFICATION PROCEDURES

ECG will prepare a site-specific Health and Safety Plan as required by the Occupational Health and Safety Administration (OSHA) Standard "Hazardous Waste Operations and Emergency Response" guidelines (29 CFR.1910.120). The document will be reviewed and signed by all ECG personnel and subcontractors prior to performing work at the site.

Prior to conducting and subsurface work at the site, Underground Services Alert (USA) will be contacted to delineate subsurface utilities near the site with surface markings. In addition, the first five feet of every location will be hand cleared to a diameter larger than the diameter of the auger or probe as a further precaution against damaging underground utilities. Sites that are currently operated as gas stations will be cleared with a private utility locator prior to drilling activities.

Soil samples to be submitted for chemical analyses are collected into brass or stainless steel tubes. The tubes are placed in an 18-inch long split-barrel sampler. The split-barrel sampler is driven its entire length hydraulically or by 140-pound drop hammer. The split-barrel sampler is removed from the borehole and the tubes are removed. When the tubes are removed from the split-barrel sampler, the tubes are trimmed and capped with Teflon sheets and plastic caps or the soil is removed from the tubes and placed in other appropriate sample containers. The samples are sealed, labeled, and placed in ice under chain-of-custody to be delivered to the analytical laboratory. All samples will be kept refrigerated until their delivery to the analytical laboratory.

One soil sample collected from each split-barrel sampler is field screened with a photoionization detector (PID), flame ionization detector (FID), or other equivalent field screening meter. The soil sample is sealed in a plastic bag or other appropriate container to allow volatilization of volatile organic compounds (VOCs). The field meter is used to measure the VOC concentration in the container's headspace and is recorded on the boring logs at the appropriate depth interval.

Other soil samples collected from each split-barrel sampler are inspected and documented to identify the soil stratigraphy beneath the site and classify the soil types according to the United Soil Classification System. The soil types are recorded on boring logs with the appropriate depth interval and any pertinent field observations. Drilling and sampling equipment are steam cleaned or washed in solution and rinsed in deionized water prior to use, between sample collections and boreholes and after use.

2.0 SOIL EXCAVATION SAMPLE COLLECTION AND CLASSIFICATION PROCEDURES

Soil samples to be submitted for chemical analyses are collected into brass or stainless steel tubes or other appropriate containers. The samples are sealed, labeled, and placed in ice under chain-of-custody (COC) to be delivered to the analytical laboratory. All samples will be kept refrigerated until their delivery to the analytical laboratory.

Select soil samples are placed into a sealed plastic bag or other appropriate container and field screened using a PID, FID, or equivalent meter. Other soil samples collected are inspected and documented to identify the soil stratigraphy beneath the site and classify the soil types according to the United Soil Classification System. The soil types are recorded field notes with the appropriate depth interval and any pertinent field observations. Sampling equipment are steam cleaned or washed in solution and rinsed in deionized water prior to use, between sample collections, and after use. Soil cuttings and rinse water are temporarily stored onsite pending laboratory analytical results and proper transport and disposal.

3.0 SAMPLE IDENTIFICATION AND COC PROCEDURES

Sample containers are labeled with job number, job name, sample collection time and date, sample collection point, and analyses requested. Sampling method, sampler's name, and any pertinent field observations are recorded on boring logs or excavation field notes. COC forms track the possession of the sample from the time of its collection until the time of its delivery to the analytical laboratory. During sample transfers, the person with custody of the samples will relinquish them to the next person by signing the COC and documenting the time and date. The analytical laboratory Quality Control/Quality Assurance (QA/QC) staff will document the receipt of the samples and confirm the analyses requested on the COC matches the sample containers and preservative used, if any. The analytical laboratory will assign unique log numbers for identification during the analyses and reporting. The log numbers will be added to the COC form and maintained in a log book maintained by the analytical laboratory.

4.0 ANALYTICAL LABORATORY QA/QC PROCEDURES

The analytical laboratory analyzes spikes, replicates, blanks, spiked blanks, and certified reference materials to verify analytical methods and results. The analytical laboratory QA/QC also includes:

- Routine instrument calibration,
- Complying with state and federal laboratory accreditation and certification programs,
- Participation in U.S. EPA performance evaluation studies,
- Standard operating procedures, and
- Multiple review of raw data and client reports

5.0 HOLLOW STEM AUGER WELL INSTALLATION

Boreholes for wells are often drilled with a truck-mounted hollow stem auger drill rig. The borehole diameter is at least 4 inches wider than the outside diameter of the well casing. Soil samples are collected and screened as described in **Section 1.0** and decontamination procedures are also the same as described in **Section 1.0**.

Wells are cased with both blank and factory-perforated Schedule 40 PVC. The factory perforations are typically 0.020 inches wide by 1.5 inch long slots, with 42 slots per foot. A PVC cap is typically installed at the bottom of the casing with stainless steel screws. No solvents or cements are used in the construction of the wells. Well stabilizers or centering devices may be installed around the casing to ensure the filter material and grout in the annulus are evenly distributed. The casing is purchased pre-cleaned or steam cleaned and washed prior to installation in the borehole.

The casing is set inside the augers and sand, gravel, or other filter material is poured into the annulus to fill the borehole from the bottom to approximately 1-2 feet above the perforations. A two foot thick bentonite plug is placed above the filter material to prevent the grout from filling the filter pack. Neat cement or sand-cement grout is poured into the annulus from the top of the bentonite plug to the surface. For wells located in parking lots or driveways, or roads, a traffic rated well box is installed around the well. For wells located in landscaped areas or fields, a stovepipe well protection device is installed around the well. Soil cuttings and rinsewater are temporarily stored onsite pending laboratory analytical results and proper transport and disposal.

6.0 MUD AND AIR ROTARY WELL INSTALLATION

Boreholes for wells can also be drilled with a truck-mounted air rotary or mud rotary drill rig. Air or mud can be used as a drill fluid to fill the borehole and prevent the borehole from caving in and remove drill cuttings. Mud or air can be chosen depending on the subsurface conditions. Soil samples are collected and screened as described in **Section 1.0** and decontamination procedures are also the same as described in **Section 1.0**.

Wells are cased with both blank and factory-perforated Schedule 40 PVC. The factory perforations are typically 0.020 inches wide by 1.5 inch long slots, with 42 slots per foot. A PVC cap is typically installed at the bottom of the casing with stainless steel screws. No solvents or cements are used in the construction of the wells. Well stabilizers or centering devices may be installed around the casing to ensure the filter material and grout in the annulus are evenly distributed. The casing is purchased pre-cleaned or steam cleaned and washed prior to installation in the borehole. Soil cuttings and drilling fluids are temporarily stored onsite pending laboratory analytical results and proper transport and disposal.

The casing is set inside the augers and sand, gravel, or other filter material is poured into the annulus to fill the borehole from the bottom to approximately 1-2 feet above the perforations. A two foot thick bentonite plug is placed above the filter material to prevent the grout from filling the filter pack. Neat cement or sand-cement grout is poured into the annulus from the top of the bentonite plug to the surface. For wells located in parking lots or driveways, or roads, a traffic rated well box is installed around the well. For wells located in landscaped areas or fields, a stovepipe well protection device is installed around the well. Soil cuttings and rinsewater are temporarily stored onsite pending laboratory analytical results and proper transport and disposal.

7.0 WELL DEVELOPMENT

After well installation, the wells are developed to remove residual drilling materials from the annulus and to improve well production by fine materials from the filter pack. Possible well development methods include pumping, surging, bailing, jetting, flushing, and air lifting. Development water is temporarily stored onsite pending laboratory analytical results and proper transport and disposal. Development equipment are steam cleaned or washed in solution and rinsed in deionized water prior to use, between sample collections and after use. After well development the wells are typically allowed to stabilize for at least 24 hours prior to purging and sampling.

8.0 LIQUID LEVEL MEASUREMENTS

Liquid level measurements are made with a water level meter and/or interface probe and disposable bailers. The probe tip attached to a measuring tape is lowered into the well and into the groundwater when a beeping tone indicates the probe is in the groundwater. The probe and measuring tape (graduated to hundredths of a foot) are slowly raised until the beeping stops and the depth to water measurement is recorded. If the meter makes a steady tone, this indicates the presence of floating liquid hydrocarbons (FLH) and the probe and measuring tape are raised until the steady tone stops and the depth to the FLH is measured. Once depth to water and depth to FLH (if present) has been recorded, the probe and measuring tape are lowered to the bottom of the well where the total depth of the well is measured. The depth to water, depth to FLH, and depth to bottom are measured again to confirm the results.

If FLH is encountered in the well, a disposable bailer is lowered into the well and brought back to the surface to confirm the thickness/presence of FLH. To minimize potential for cross contamination between wells, all measurements are done from cleanest to dirtiest well. Prior to beginning liquid level measurements, in between measurements in all wells, and at the completion of liquid level measurements, the water level probe and measuring tape is cleaned with solution (Alconox, Simple Green, or equivalent) and rinsed with deionized water.

9.0 WELL PURGING AND SAMPLING

Each well is typically purged of at least three well casing volumes of groundwater prior to collecting a groundwater sample. Purging can continue beyond three well casing volumes if field parameters including pH, temperature, electrical conductivity are not stabilizing during the purging process. If the well is purged dry before the three well casing volumes has been purged, the well is typically allowed to recharge to 80 percent of its initial water level before a groundwater sample is collected.

Purging equipment can include submersible pumps, PVC purging bailers, disposable bailers, air lift pumps, or pneumatic pumps. Prior to beginning well purging, in between each well purging, and at the completion of purging activities, all non-dedicated purging equipment is cleaned with solution (Alconox, Simple Green, or equivalent) and rinsed with deionized water.

Once the well has been purged, it will be sampled with a disposable bailer, PVC bailer, stainless steel bailer, or through a low flow groundwater pump. The groundwater sample is transferred from the bottom of the bailer to reduce volatilization to the appropriate sample container. The sample containers are specified by the analytical laboratory depending on the analyses requested. Sample containers typically include volatile organic compound (VOA) vials with septa of Teflon like materials. The groundwater sample is collected into the VOAs to minimize air bubbles and once the cap has been placed on the VOA, the VOA is tipped upside down to see if air bubbles are present in the VOA. Typically a duplicate VOA is collected from each well to be analyzed by the analytical laboratory, if warranted, to verify results.

Sample containers are labeled as described in **Section 3.0** and placed immediately in an ice chest and kept refrigerated until its delivery to the analytical laboratory. A trip blank may also be prepared by the analytical laboratory to travel with the ice chest during transport to the laboratory. Field blanks from equipment that has been decontaminated may be collected in between use in different wells to verify the decontamination procedure is effective. To minimize potential for cross contamination between wells, all wells are purged and sampled from cleanest to dirtiest well.

10.0 TEDLAR BAG SOIL VAPOR SAMPLING

Sampling equipment to collect Tedlar bag soil vapor samples includes an air pump, a Tedlar bag which can range in size from 1 to 10 liters, and 3/16-inch diameter polyethylene tubing. The air pump should be equipped with 3/16-inch hose barbs for the polyethylene tubing to attach to. The Tedlar bag must be equipped with a valve for filling and sealing the bag.

When soil vapor samples are collected from remediation equipment, the sample collection port on the remediation equipment is typically fitted with a 3/16-inch hose barb. Prior to collecting soil vapor samples from remediation equipment, air flow, temperature, and pressure or vacuum of the sampling point/remediation equipment are recorded. One end of the polyethylene tubing is connected to the sample collection port and one end is connected to the influent of the air pump, creating an air tight seal. The air pump is turned on and soil vapor from the sample collection port is pumped through the air pump for at least one minute. The air pump is turned off and one end of another piece of polyethylene tubing is connected to the effluent of the air pump and one end is connected to the valve on the Tedlar bag. The valve is opened and the air pump is turned on filling the Tedlar bag with the soil vapor sample until the bag has reached 75% capacity, when the valve on the Tedlar bag is closed and the air pump is turned off.

Tedlar bags are labeled as described in **Section 3.0** and placed immediately in an empty ice chest and kept dry and unrefrigerated until its delivery to the analytical laboratory. After each soil vapor sample collection, the air pump is turned on for five minutes to allow ambient air to clear the air pump and polyethylene tubing.

11.0 SUMMA CANISTER SOIL VAPOR SAMPLING

Sampling equipment to collect Summa canister soil vapor samples includes a sterilized Summa stainless steel canister under vacuum, ¼-inch diameter polyethylene tubing, and a laboratory calibrated flow meter, if required.

When soil vapor samples are collected from remediation equipment, the sample collection port on the remediation equipment is typically fitted with brass connection with silicone septa that has been threaded into a tapped hole on the piping network. Prior to collecting soil vapor samples from remediation equipment, air flow, temperature, and pressure or vacuum of the sampling point/remediation equipment are recorded. One end of the polyethylene tubing is connected to the brass sample collection port and one end is connected to the canister valve or flow meter, creating an air tight seal. Prior to collecting the soil vapor sample, the valve on the Summa canister is opened to verify the Summa canister has the required vacuum which is recorded. Three well volumes of vapor will be purged at a rate less than 200 milliliters per minute (ml/min.), including sand pack pore volume from each soil vapor probe prior to sample collection. The sample valve or flow meter is opened and the soil vapor sample is collected into the Summa canister and the sample valve is closed and the final vacuum reading (typically greater than 5 inches per square inch) on the Summa canister is recorded.

Per the DTSC *Advisory Active Soil Gas Investigations*, April 2012, high quality soil gas data collection is driven by project-specific data quality objectives (DQOs) and can be enhanced by using a shroud and a gaseous tracer compound. This method of leak detection ensures that soil gas wells are properly constructed and the sample train components do not leak. Most gaseous tracer compounds do not affect target analyte measurements nor does their detection require sample dilution. Also, gaseous leak tracer compounds allow a quantitative determination of a leak either in the sampling train or from ambient air intrusion down the borehole.

The shroud will be designed to contain the entire sampling train and the soil gas well annulus. The sampling train will be constructed of material that does not react with the sample analytes and will not off gas or adsorb volatile compounds. The sampling equipment will be clean and shut-in tested prior to use. The gaseous leak tracer compound (isobutylene 100 ppm) concentration inside the shroud will be monitored frequently to verify initial concentrations. A photoionization detector will be used to monitor tracer gas concentrations.

Summa canisters are labeled as described in **Section 3.0** and placed immediately in an empty ice chest and kept dry and unrefrigerated until its delivery to the analytical laboratory.

12.0 SYRINGE SOIL VAPOR SAMPLING

Sampling equipment to collect syringe soil vapor samples includes a sterilized, 100 cubic centimeter, gas tight syringe and silicone septa.

When soil vapor samples are collected from remediation equipment, the sample collection port on the remediation equipment is typically fitted with brass connection with silicone septa that has been threaded into a tapped hole on the piping network. Prior to collecting soil vapor samples from remediation equipment, air flow, temperature, and pressure or vacuum of the sampling point/remediation equipment are recorded. The syringe is inserted into the silicone septa and the plunger is purged or pumped at least three times. The sample is collected the fourth time the syringe plunger is extracted and the syringe is removed from the sample collection port and the needle on the syringe is capped with a rubber stopper.

Syringes are labeled as described in **Section 3.0** and placed immediately in an empty ice chest and kept dry and unrefrigerated until its delivery to the analytical laboratory.

13.0 TEMPORARY SAMPLING POINTS

A temporary borehole is advanced using either a slam bar or a direct push drill rig. In the case of the slam bar, once the borehole has been created, a temporary soil vapor probe is inserted into the borehole and advanced with a slide hammer or other physical force two additional feet. A bentonite seal is then placed in the borehole above the soil vapor probe to create an air tight seal and prevent ambient air from entering the sample collection space. In the case of the direct push drill rig, the sampling rod is advanced to the desired depth with a 6-inch retractable vapor screen at the tip. The sample screen on the 6-inch vapor screen is removed and a bentonite seal is then placed in the borehole above the soil vapor probe to create an air tight seal and prevent ambient air from entering the sample collection space.

Once the bentonite seal has set, at least one hour, the soil vapor survey samples are collected into Tedlar bags as described in **Section 10.0** or Summa canisters as described in **Section 11.0**. Samples are labeled as described in **Section 3.0** and placed immediately in an empty ice chest and kept dry and unrefrigerated until its delivery to the analytical laboratory. After each soil vapor sample collection, the air pump is turned on for five minutes to allow ambient air to clear the air pump and polyethylene tubing.

14.0 REPEATABLE SAMPLING POINTS

A borehole is advanced using either a hand auger or a drill rig. A 6-inch slotted probe with caps on both ends is placed in the borehole. A Swagelok fitting is attached to one end cap and 3/16-inch diameter Nylon tubing is attached to the Swagelok fitting. A one foot sand pack is placed around the probe and the remainder of the borehole is sealed with a layer of dry bentonite powder, followed by a layer of bentonite chips, and an additional layer of dry bentonite powder. A well box is placed on the surface of the repeatable sampling point and the excess Nylon tubing is placed inside the well box.

Soil vapor survey samples will be collected at least one week after probe installation. In addition, soil vapor survey samples will only be collected after five consecutive precipitation free days and after any onsite irrigation has been suspended.

The soil vapor survey samples are collected into Tedlar bags as described in **Section 10.0** or Summa canisters as described in **Section 11.0**. Tedlar bags or Summa canisters are labeled as described in **Section 3.0** and placed immediately in an empty ice chest and kept dry and unrefrigerated until its delivery to the analytical laboratory. After each soil vapor sample collection, the air pump is turned on for five minutes to allow ambient air to clear the air pump and polyethylene tubing.

argon laboratories

07 October 2014

Mike Sgourakis
Environmental Compliance Group, LLC
270 Vintage Drive
Turlock, CA 95382

RE: Shore Acres Gas Project Data

Enclosed are the results for sample(s) received on 09/24/14 15:40 by Argon Laboratories. The sample(s) were analyzed according to instructions in accompanying chain-of-custody. Results are summarized on the following pages.

Please see quality control report for a summary of QC data pertaining to this project.

The sample(s) will be stored for 30 days after completion of analysis, then disposed of in accordance with State and Federal regulations. Sample(s) may be archived by prior arrangement.

Thank you for the opportunity to service the needs of your company.

Sincerely,



Hiram Cueto
Lab Manager

Argon Analytical Services, Inc. CHAIN OF CUSTODY

Project Information:					Report To:					Samples Submitted To:												
Project No: GHA.19009 Project Title: Shore Acres Gas Location: 403 East 12th Street Oakland, CA					Consultant: Environmental Compliance Group, LLC Address: 270 Vintage Drive Turlock, CA 95382 Contact: Mike Sgourakis Phone: 916.600.4580 Fax: 209.664.1040					Laboratory: Argon Labs Address: 2905 Railroad Avenue Ceres, CA 95307 Contact: Phone: (209) 581-9280 Fax: (209) 581-9282												
Sampler's Name: (print) Sampler's Signature:					Bill To:					Date Results Required:												
					Client: Environmental Compliance Group, LLC Address: 270 Vintage Drive Turlock, CA					Date Report Required:												
TURN AROUND TIME					ANALYSIS																	
RUSH	24 Hour	48 Hour	Standard (5 days)	Special (10-14 days)	TPHg by EPA Method 8015M	BTEX, 5 oxygenates, 1,2-DCA, EDB by EPA Method 8260B															EDF Reports	COMMENTS
<input type="checkbox"/>	<input type="checkbox"/>	<input type="checkbox"/>	<input type="checkbox"/>	<input checked="" type="checkbox"/>																		
Sample ID.	Date	Time	# Containers	Matrix																	Preservative	
MW-1	9/19/14	1202	3	water	X	X																
MW-2		1108																				
MW-3		1217																				
MW-4		1127																				
MW-5		1235																				
MW-6		1144																				
EW-1		1245																				
EW-2		1250																				
EW-3		1255																				
EW-4		1300																				
Relinquished By: <i>Daniel...</i>			Date: 9/24/14	Time: 15:40	Received By: <i>U. ...</i>			Date: 9/24/14	Time: 15:40	SPECIAL INSTRUCTIONS: Global ID# T0600174667												
Relinquished By:			Date:	Time:	Received By:			Date:	Time:													
Relinquished By:			Date:	Time:	Received By:			Date:	Time:													

Argon Laboratories Sample Receipt Checklist

Client Name: Environmental Compliance Group Date & Time Received: 09/24/14 15:40
Project Name: Shore Acres Gas Client Project Number: GHA.19009
Received By: HC Matrix: Water Soil Sludge
Sample Carrier: Client Laboratory Fed Ex UPS Other
Argon Labs Project Number: P409041
Shipper Container in good condition? N/A Yes No Samples received in proper containers? Yes No
Samples received intact? Yes No
Samples received under refrigeration? Yes No Sufficient sample volume for requested tests? Yes No
Chain of custody present? Yes No Samples received within holding time? Yes No
Chain of Custody signed by all parties? Yes No Do samples contain proper preservative?
N/A Yes No
Chain of Custody matches all sample labels? Yes No Do VOA vials contain zero headspace?
(None submitted) Yes No

ANY "No" RESPONSE MUST BE DETAILED IN THE COMMENTS SECTION BELOW

Date Client Contacted: _____ Person Contacted: _____
Contacted By: _____ Subject: _____

Comments:

Action Taken:

ADDITIONAL TEST(S) REQUEST / OTHER

Contacted By: _____ Date: _____ Time: _____
Call Received By: _____

Comments:





Environmental Compliance Group, LLC
270 Vintage Drive
Turlock, CA 95382

Project Number: GHA.19009
Project Name: Shore Acres Gas
Project Manager: Mike Sgourakis

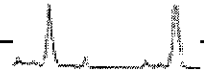
Work Order No.:
P409041

ANALYTICAL REPORT FOR SAMPLES

Sample ID	Laboratory ID	Matrix	Date Sampled	Date Received
MW-1	P409041-01	Water	09/19/14 12:02	09/24/14 15:40
MW-2	P409041-02	Water	09/19/14 11:08	09/24/14 15:40
MW-3	P409041-03	Water	09/19/14 12:17	09/24/14 15:40
MW-4	P409041-04	Water	09/19/14 11:27	09/24/14 15:40
MW-5	P409041-05	Water	09/19/14 12:35	09/24/14 15:40
MW-6	P409041-06	Water	09/19/14 11:44	09/24/14 15:40
EW-1	P409041-07	Water	09/19/14 12:45	09/24/14 15:40
EW-2	P409041-08	Water	09/19/14 12:50	09/24/14 15:40
EW-3	P409041-09	Water	09/19/14 12:55	09/24/14 15:40
EW-4	P409041-10	Water	09/19/14 13:00	09/24/14 15:40

Approved By

Argon Laboratories, Inc. California D.O.H.S. Cert. #2359



Environmental Compliance Group, LLC 270 Vintage Drive Turlock, CA 95382	Project Number: GHA.19009 Project Name: Shore Acres Gas Project Manager: Mike Sgourakis	Work Order No.: P409041
---	---	----------------------------

Total Petroleum Hydrocarbons @ Gasoline

Analyte	Result	Reporting Limit	Units	Dilution	Analyzed	Method	Notes
MW-1 (P409041-01) Water Sampled: 19-Sep-14 12:02 Received: 24-Sep-14 15:40							
Total Petroleum Hydrocarbons @ Gasoline	11000	1000	ug/L	20	26-Sep-14	8015M	
Surr. Rec.:		103 %			"	"	
MW-2 (P409041-02) Water Sampled: 19-Sep-14 11:08 Received: 24-Sep-14 15:40							
Total Petroleum Hydrocarbons @ Gasoline	990	50	ug/L	1	26-Sep-14	8015M	
Surr. Rec.:		106 %			"	"	
MW-3 (P409041-03) Water Sampled: 19-Sep-14 12:17 Received: 24-Sep-14 15:40							
Total Petroleum Hydrocarbons @ Gasoline	9500	1000	ug/L	20	26-Sep-14	8015M	
Surr. Rec.:		100 %			"	"	
MW-4 (P409041-04) Water Sampled: 19-Sep-14 11:27 Received: 24-Sep-14 15:40							
Total Petroleum Hydrocarbons @ Gasoline	2100	100	ug/L	2	26-Sep-14	8015M	
Surr. Rec.:		104 %			"	"	
MW-5 (P409041-05) Water Sampled: 19-Sep-14 12:35 Received: 24-Sep-14 15:40							
Total Petroleum Hydrocarbons @ Gasoline	56000	2000	ug/L	40	26-Sep-14	8015M	
Surr. Rec.:		109 %			"	"	
MW-6 (P409041-06) Water Sampled: 19-Sep-14 11:44 Received: 24-Sep-14 15:40							
Total Petroleum Hydrocarbons @ Gasoline	6500	500	ug/L	10	26-Sep-14	8015M	
Surr. Rec.:		105 %			"	"	
EW-1 (P409041-07) Water Sampled: 19-Sep-14 12:45 Received: 24-Sep-14 15:40							
Total Petroleum Hydrocarbons @ Gasoline	28000	1000	ug/L	20	26-Sep-14	8015M	
Surr. Rec.:		106 %			"	"	

Approved By

Argon Laboratories, Inc. California D.O.H.S. Cert. #2359



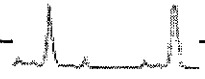
Environmental Compliance Group, LLC 270 Vintage Drive Turlock, CA 95382	Project Number: GHA.19009 Project Name: Shore Acres Gas Project Manager: Mike Sgourakis	Work Order No.: P409041
---	---	-----------------------------------

Total Petroleum Hydrocarbons @ Gasoline

Analyte	Result	Reporting Limit	Units	Dilution	Analyzed	Method	Notes
EW-2 (P409041-08) Water Sampled: 19-Sep-14 12:50 Received: 24-Sep-14 15:40							
Total Petroleum Hydrocarbons @ Gasoline	18000	1000	ug/L	20	26-Sep-14	8015M	
Surr. Rec.:		109 %			"	"	
EW-3 (P409041-09) Water Sampled: 19-Sep-14 12:55 Received: 24-Sep-14 15:40							
Total Petroleum Hydrocarbons @ Gasoline	15000	500	ug/L	10	26-Sep-14	8015M	
Surr. Rec.:		97 %			"	"	
EW-4 (P409041-10) Water Sampled: 19-Sep-14 13:00 Received: 24-Sep-14 15:40							
Total Petroleum Hydrocarbons @ Gasoline	9000	250	ug/L	5	26-Sep-14	8015M	
Surr. Rec.:		106 %			"	"	

Approved By

Argon Laboratories, Inc. California D.O.H.S. Cert. #2359



Environmental Compliance Group, LLC 270 Vintage Drive Turlock, CA 95382	Project Number: GHA.19009 Project Name: Shore Acres Gas Project Manager: Mike Sgourakis	Work Order No.: P409041
---	---	----------------------------

Volatile Organic Compounds by EPA Method 8260B

Analyte	Result	Reporting Limit	Units	Dilution	Analyzed	Method	Notes
---------	--------	-----------------	-------	----------	----------	--------	-------

MW-1 (P409041-01) Water Sampled: 19-Sep-14 12:02 Received: 24-Sep-14 15:40

Benzene	530	10	ug/L	20	29-Sep-14	8260B	
Toluene	190	10	"	"	"	"	
Xylenes, total	950	20	"	"	"	"	
Ethylbenzene	460	10	"	"	"	"	
t-Butanol	ND	100	"	"	"	"	
Methyl tert-Butyl Ether	150	10	"	"	"	"	
Di-Isopropyl Ether	ND	10	"	"	"	"	
Ethyl tert-Butyl Ether	ND	10	"	"	"	"	
tert-Amyl Methyl Ether	ND	10	"	"	"	"	
1,2-Dichloroethane	ND	10	"	"	"	"	
1,2-Dibromoethane (EDB)	ND	10	"	"	"	"	

Surr. Rec.: 110%

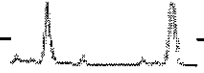
MW-2 (P409041-02) Water Sampled: 19-Sep-14 11:08 Received: 24-Sep-14 15:40

Benzene	42	1.0	ug/L	2	29-Sep-14	8260B	
Toluene	12	1.0	"	"	"	"	
Xylenes, total	110	2.0	"	"	"	"	
Ethylbenzene	97	1.0	"	"	"	"	
t-Butanol	41	10	"	"	"	"	
Methyl tert-Butyl Ether	16	1.0	"	"	"	"	
Di-Isopropyl Ether	ND	1.0	"	"	"	"	
Ethyl tert-Butyl Ether	ND	1.0	"	"	"	"	
tert-Amyl Methyl Ether	ND	1.0	"	"	"	"	
1,2-Dichloroethane	ND	1.0	"	"	"	"	
1,2-Dibromoethane (EDB)	ND	1.0	"	"	"	"	

Surr. Rec.: 118%

Approved By

Argon Laboratories, Inc. California D.O.H.S. Cert. #2359



Environmental Compliance Group, LLC
270 Vintage Drive
Turlock, CA 95382

Project Number: GHA.19009
Project Name: Shore Acres Gas
Project Manager: Mike Sgourakis

Work Order No.:
P409041

Volatile Organic Compounds by EPA Method 8260B

Analyte	Result	Reporting Limit	Units	Dilution	Analyzed	Method	Notes
MW-3 (P409041-03) Water Sampled: 19-Sep-14 12:17 Received: 24-Sep-14 15:40							
Benzene	610	10	ug/L	20	29-Sep-14	8260B	
Toluene	160	10	"	"	"	"	
Xylenes, total	400	20	"	"	"	"	
Ethylbenzene	220	10	"	"	"	"	
t-Butanol	370	100	"	"	"	"	
Methyl tert-Butyl Ether	390	10	"	"	"	"	
Di-Isopropyl Ether	ND	10	"	"	"	"	
Ethyl tert-Butyl Ether	ND	10	"	"	"	"	
tert-Amyl Methyl Ether	ND	10	"	"	"	"	
1,2-Dichloroethane	ND	10	"	"	"	"	
1,2-Dibromoethane (EDB)	ND	10	"	"	"	"	

Surr. Rec.:

112 %

" "

MW-4 (P409041-04) Water Sampled: 19-Sep-14 11:27 Received: 24-Sep-14 15:40

Benzene	110	2.5	ug/L	5	29-Sep-14	8260B	
Toluene	54	2.5	"	"	"	"	
Xylenes, total	210	5.0	"	"	"	"	
Ethylbenzene	92	2.5	"	"	"	"	
t-Butanol	ND	25	"	"	"	"	
Methyl tert-Butyl Ether	ND	2.5	"	"	"	"	
Di-Isopropyl Ether	ND	2.5	"	"	"	"	
Ethyl tert-Butyl Ether	ND	2.5	"	"	"	"	
tert-Amyl Methyl Ether	ND	2.5	"	"	"	"	
1,2-Dichloroethane	ND	2.5	"	"	"	"	
1,2-Dibromoethane (EDB)	ND	2.5	"	"	"	"	

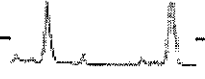
Surr. Rec.:

107 %

" "

Approved By

Argon Laboratories, Inc. California D.O.H.S. Cert. #2359



Environmental Compliance Group, LLC
 270 Vintage Drive
 Turlock, CA 95382

Project Number: GHA.19009
 Project Name: Shore Acres Gas
 Project Manager: Mike Sgourakis

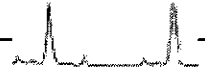
Work Order No.:
 P409041

Volatile Organic Compounds by EPA Method 8260B

Analyte	Result	Reporting Limit	Units	Dilution	Analyzed	Method	Notes
MW-5 (P409041-05) Water Sampled: 19-Sep-14 12:35 Received: 24-Sep-14 15:40							
Benzene	1000	25	ug/L	50	29-Sep-14	8260B	
Toluene	270	25	"	"	"	"	
Xylenes, total	4100	50	"	"	"	"	
Ethylbenzene	1000	25	"	"	"	"	
t-Butanol	ND	250	"	"	"	"	
Methyl tert-Butyl Ether	75	25	"	"	"	"	
Di-Isopropyl Ether	ND	25	"	"	"	"	
Ethyl tert-Butyl Ether	ND	25	"	"	"	"	
tert-Amyl Methyl Ether	ND	25	"	"	"	"	
1,2-Dichloroethane	ND	25	"	"	"	"	
1,2-Dibromoethane (EDB)	ND	25	"	"	"	"	
Surr. Rec.:		94 %			"	"	
MW-6 (P409041-06) Water Sampled: 19-Sep-14 11:44 Received: 24-Sep-14 15:40							
Benzene	240	2.5	ug/L	5	29-Sep-14	8260B	
Toluene	21	2.5	"	"	"	"	
Xylenes, total	110	5.0	"	"	"	"	
Ethylbenzene	490	2.5	"	"	"	"	
t-Butanol	ND	25	"	"	"	"	
Methyl tert-Butyl Ether	7.1	2.5	"	"	"	"	
Di-Isopropyl Ether	ND	2.5	"	"	"	"	
Ethyl tert-Butyl Ether	ND	2.5	"	"	"	"	
tert-Amyl Methyl Ether	ND	2.5	"	"	"	"	
1,2-Dichloroethane	ND	2.5	"	"	"	"	
1,2-Dibromoethane (EDB)	ND	2.5	"	"	"	"	
Surr. Rec.:		97 %			"	"	

Approved By

Argon Laboratories, Inc. California D.O.H.S. Cert. #2359

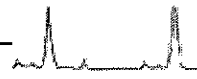


Environmental Compliance Group, LLC 270 Vintage Drive Turlock, CA 95382	Project Number: GHA.19009 Project Name: Shore Acres Gas Project Manager: Mike Sgourakis	Work Order No.: P409041
---	---	----------------------------

Volatile Organic Compounds by EPA Method 8260B

Analyte	Result	Reporting Limit	Units	Dilution	Analyzed	Method	Notes
EW-1 (P409041-07) Water Sampled: 19-Sep-14 12:45 Received: 24-Sep-14 15:40							
Benzene	1000	20	ug/L	40	29-Sep-14	8260B	
Toluene	450	20	"	"	"	"	
Xylenes, total	3900	40	"	"	"	"	
Ethylbenzene	1400	20	"	"	"	"	
t-Butanol	ND	200	"	"	"	"	
Methyl tert-Butyl Ether	300	20	"	"	"	"	
Di-Isopropyl Ether	ND	20	"	"	"	"	
Ethyl tert-Butyl Ether	ND	20	"	"	"	"	
tert-Amyl Methyl Ether	ND	20	"	"	"	"	
1,2-Dichloroethane	ND	20	"	"	"	"	
1,2-Dibromoethane (EDB)	ND	20	"	"	"	"	
Surr. Rec.:		92 %			"	"	
EW-2 (P409041-08) Water Sampled: 19-Sep-14 12:50 Received: 24-Sep-14 15:40							
Benzene	690	25	ug/L	50	29-Sep-14	8260B	
Toluene	1300	25	"	"	"	"	
Xylenes, total	2400	50	"	"	"	"	
Ethylbenzene	360	25	"	"	"	"	
t-Butanol	ND	250	"	"	"	"	
Methyl tert-Butyl Ether	96	25	"	"	"	"	
Di-Isopropyl Ether	ND	25	"	"	"	"	
Ethyl tert-Butyl Ether	ND	25	"	"	"	"	
tert-Amyl Methyl Ether	ND	25	"	"	"	"	
1,2-Dichloroethane	ND	25	"	"	"	"	
1,2-Dibromoethane (EDB)	ND	25	"	"	"	"	
Surr. Rec.:		94 %			"	"	

Approved By
Argon Laboratories, Inc. California D.O.H.S. Cert. #2359



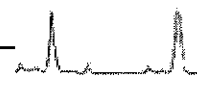
Environmental Compliance Group, LLC 270 Vintage Drive Turlock, CA 95382	Project Number: GHA.19009 Project Name: Shore Acres Gas Project Manager: Mike Sgourakis	Work Order No.: P409041
---	---	----------------------------

Volatile Organic Compounds by EPA Method 8260B

Analyte	Result	Reporting Limit	Units	Dilution	Analyzed	Method	Notes
EW-3 (P409041-09) Water Sampled: 19-Sep-14 12:55 Received: 24-Sep-14 15:40							
Benzene	670	25	ug/L	50	29-Sep-14	8260B	
Toluene	650	25	"	"	"	"	
Xylenes, total	2400	50	"	"	"	"	
Ethylbenzene	530	25	"	"	"	"	
t-Butanol	ND	250	"	"	"	"	
Methyl tert-Butyl Ether	75	25	"	"	"	"	
Di-Isopropyl Ether	ND	25	"	"	"	"	
Ethyl tert-Butyl Ether	ND	25	"	"	"	"	
tert-Amyl Methyl Ether	ND	25	"	"	"	"	
1,2-Dichloroethane	ND	25	"	"	"	"	
1,2-Dibromoethane (EDB)	ND	25	"	"	"	"	
Surr. Rec.:		88 %			"	"	
EW-4 (P409041-10) Water Sampled: 19-Sep-14 13:00 Received: 24-Sep-14 15:40							
Benzene	680	20	ug/L	40	29-Sep-14	8260B	
Toluene	1600	20	"	"	"	"	
Xylenes, total	3000	40	"	"	"	"	
Ethylbenzene	450	20	"	"	"	"	
t-Butanol	520	200	"	"	"	"	
Methyl tert-Butyl Ether	120	20	"	"	"	"	
Di-Isopropyl Ether	ND	20	"	"	"	"	
Ethyl tert-Butyl Ether	ND	20	"	"	"	"	
tert-Amyl Methyl Ether	ND	20	"	"	"	"	
1,2-Dichloroethane	ND	20	"	"	"	"	
1,2-Dibromoethane (EDB)	ND	20	"	"	"	"	
Surr. Rec.:		91 %			"	"	

Approved By

Argon Laboratories, Inc. California D.O.H.S. Cert. #2359



Environmental Compliance Group, LLC 270 Vintage Drive Turlock, CA 95382	Project Number: GHA.19009 Project Name: Shore Acres Gas Project Manager: Mike Sgourakis	Work Order No.: P409041
---	---	----------------------------

Total Petroleum Hydrocarbons @ Gasoline - Quality Control

Argon Laboratories

Analyte	Result	Reporting Limit	Units	Spike Level	Source Result	%REC	%REC Limits	RPD	RPD Limit	Notes
---------	--------	-----------------	-------	-------------	---------------	------	-------------	-----	-----------	-------

Batch P401102 - EPA 5030B

Blank (P401102-BLK1)

Prepared & Analyzed: 09/26/14

<i>Surrogate: a,a,a-Trifluorotoluene</i>	45.5		ug/L	50		91	70-130			
Total Petroleum Hydrocarbons @ Gasoline	ND	50	"							

LCS (P401102-BS1)

Prepared & Analyzed: 09/26/14

Total Petroleum Hydrocarbons @ Gasoline	1030		ug/L	1000		103	80-120			
---	------	--	------	------	--	-----	--------	--	--	--

LCS Dup (P401102-BSD1)

Prepared & Analyzed: 09/26/14

Total Petroleum Hydrocarbons @ Gasoline	1040		ug/L	1000		104	80-120	1	20	
---	------	--	------	------	--	-----	--------	---	----	--

Matrix Spike (P401102-MS1)

Source: P409041-02

Prepared & Analyzed: 09/26/14

Total Petroleum Hydrocarbons @ Gasoline	2120		ug/L	1000	990	113	70-130			
---	------	--	------	------	-----	-----	--------	--	--	--

Matrix Spike Dup (P401102-MSD1)

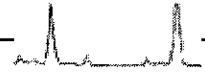
Source: P409041-02

Prepared & Analyzed: 09/26/14

Total Petroleum Hydrocarbons @ Gasoline	2040		ug/L	1000	990	105	70-130	4	20	
---	------	--	------	------	-----	-----	--------	---	----	--

Approved By

Argon Laboratories, Inc. California D.O.H.S. Cert. #2359



Environmental Compliance Group, LLC
 270 Vintage Drive
 Turlock, CA 95382

Project Number: GHA.19009
 Project Name: Shore Acres Gas
 Project Manager: Mike Sgourakis

Work Order No.:
 P409041

Volatile Organic Compounds by EPA Method 8260B - Quality Control

Argon Laboratories

Analyte	Result	Reporting Limit	Units	Spike Level	Source Result	%REC	%REC Limits	RPD	RPD Limit	Notes
---------	--------	-----------------	-------	-------------	---------------	------	-------------	-----	-----------	-------

Batch P401101 - EPA 5030B

Blank (P401101-BLK1)

Prepared & Analyzed: 09/29/14

<i>Surrogate: Fluorobenzene</i>	44.0		ug/L	50		88	70-130			
Benzene	ND	0.5	"							
Toluene	ND	0.5	"							
Xylenes, total	ND	1.0	"							
Ethylbenzene	ND	0.5	"							
t-Butanol	ND	5.0	"							
Methyl tert-Butyl Ether	ND	0.5	"							
Di-Isopropyl Ether	ND	0.5	"							
Ethyl tert-Butyl Ether	ND	0.5	"							
tert-Amyl Methyl Ether	ND	0.5	"							
1,2-Dichloroethane	ND	0.5	"							
1,2-Dibromoethane (EDB)	ND	0.5	"							

LCS (P401101-BS1)

Prepared & Analyzed: 09/29/14

Benzene	23.6		ug/L	25		94	80-120			
---------	------	--	------	----	--	----	--------	--	--	--

LCS Dup (P401101-BSD1)

Prepared & Analyzed: 09/29/14

Benzene	24.5		ug/L	25		98	80-120	4	20	
---------	------	--	------	----	--	----	--------	---	----	--

Matrix Spike (P401101-MS1)

Source: P409041-02

Prepared & Analyzed: 09/29/14

t-Butanol	150		ug/L	120	41.0	91	70-130			
-----------	-----	--	------	-----	------	----	--------	--	--	--

Matrix Spike Dup (P401101-MSD1)

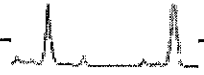
Source: P409041-02

Prepared & Analyzed: 09/29/14

t-Butanol	164		ug/L	120	41.0	102	70-130	9	20	
-----------	-----	--	------	-----	------	-----	--------	---	----	--

Approved By

Argon Laboratories, Inc. California D.O.H.S. Cert. #2359



Environmental Compliance Group, LLC
270 Vintage Drive
Turlock, CA 95382

Project Number: GHA.19009
Project Name: Shore Acres Gas
Project Manager: Mike Sgourakis

Work Order No.:
P409041

Notes and Definitions

- DET Analyte DETECTED
- ND Analyte NOT DETECTED at or above the reporting limit
- NR Not Reported
- dry Sample results reported on a dry weight basis
- RPD Relative Percent Difference

Approved By

Argon Laboratories, Inc. California D.O.H.S. Cert. #2359



Report Number : 88976

Date : 08/22/2014

Laboratory Results

Drew Van Allen
Environmental Compliance Group
270 Vintage Dr
Turlock, CA 95382

Subject : 2 Vapor Samples
Project Name : Shore Acres Gas
Project Number : GHA.19009

Dear Mr. Van Allen,

Chemical analysis of the samples referenced above has been completed. Summaries of the data are contained on the following pages. Sample(s) were received under documented chain-of-custody. US EPA protocols for sample storage and preservation were followed. Testing procedures comply with the 2003 NELAC and TNI 2009 standards. Laboratory results relate only to the samples tested. This report may be freely reproduced in full, but may only be reproduced in part with the express permission of Kiff Analytical, LLC.

Kiff Analytical, LLC is certified by the State of California under the Environmental Laboratory Accreditation Program (ELAP), lab number 08263CA.

If you have any questions regarding procedures or results, please call me at 530-297-4800.

Sincerely,

A handwritten signature in black ink that reads "Troy D. Turpen". The signature is written in a cursive style with a large, prominent initial 'T'.

Troy Turpen



Report Number : 88976

Date : 08/22/2014

Project Name : **Shore Acres Gas**

Project Number : **GHA.19009**

Sample : **Effluent**

Matrix : Air

Lab Number : 88976-01

Sample Date :08/19/2014

Parameter	Measured Value	Method Reporting Limit	Units	Analysis Method	Date/Time Analyzed
Benzene	< 0.050	0.050	ppmv	EPA 8260B	08/21/14 19:33
Toluene	< 0.050	0.050	ppmv	EPA 8260B	08/21/14 19:33
Ethylbenzene	< 0.050	0.050	ppmv	EPA 8260B	08/21/14 19:33
Total Xylenes	< 0.050	0.050	ppmv	EPA 8260B	08/21/14 19:33
Methyl-t-butyl ether (MTBE)	< 0.10	0.10	ppmv	EPA 8260B	08/21/14 19:33
TPH as Gasoline	< 5.0	5.0	ppmv	EPA 8260B	08/21/14 19:33
1,2-Dichloroethane-d4 (Surr)	112		% Recovery	EPA 8260B	08/21/14 19:33
Toluene - d8 (Surr)	102		% Recovery	EPA 8260B	08/21/14 19:33

Sample : **Influent**

Matrix : Air

Lab Number : 88976-02

Sample Date :08/19/2014

Parameter	Measured Value	Method Reporting Limit	Units	Analysis Method	Date/Time Analyzed
Benzene	0.79	0.050	ppmv	EPA 8260B	08/21/14 20:07
Toluene	0.60	0.050	ppmv	EPA 8260B	08/21/14 20:07
Ethylbenzene	0.31	0.050	ppmv	EPA 8260B	08/21/14 20:07
Total Xylenes	1.1	0.050	ppmv	EPA 8260B	08/21/14 20:07
Methyl-t-butyl ether (MTBE)	0.13	0.10	ppmv	EPA 8260B	08/21/14 20:07
TPH as Gasoline	33	5.0	ppmv	EPA 8260B	08/21/14 20:07
1,2-Dichloroethane-d4 (Surr)	112		% Recovery	EPA 8260B	08/21/14 20:07
Toluene - d8 (Surr)	109		% Recovery	EPA 8260B	08/21/14 20:07

Report Number : 88976

Date : 08/22/2014

QC Report : Method Blank Data

Project Name : **Shore Acres Gas**

Project Number : **GHA.19009**

<u>Parameter</u>	<u>Measured Value</u>	<u>Method Reporting Limit</u>	<u>Units</u>	<u>Analysis Method</u>	<u>Date Analyzed</u>
Benzene	< 0.050	0.050	ppmv	EPA 8260B	08/21/2014
Ethylbenzene	< 0.050	0.050	ppmv	EPA 8260B	08/21/2014
Toluene	< 0.050	0.050	ppmv	EPA 8260B	08/21/2014
Total Xylenes	< 0.050	0.050	ppmv	EPA 8260B	08/21/2014
Methyl-t-butyl ether (MTBE)	< 0.10	0.10	ppmv	EPA 8260B	08/21/2014
TPH as Gasoline	< 5.0	5.0	ppmv	EPA 8260B	08/21/2014
1,2-Dichloroethane-d4 (Surr)	114		%	EPA 8260B	08/21/2014
Toluene - d8 (Surr)	104		%	EPA 8260B	08/21/2014

<u>Parameter</u>	<u>Measured Value</u>	<u>Method Reporting Limit</u>	<u>Units</u>	<u>Analysis Method</u>	<u>Date Analyzed</u>
------------------	-----------------------	-------------------------------	--------------	------------------------	----------------------



Report Number : 89247

Date : 09/29/2014

Laboratory Results

Drew Van Allen
Environmental Compliance Group
270 Vintage Dr
Turlock, CA 95382

Subject : 2 Vapor Samples
Project Name : Shore Acres Gas- 403 E 12th St. Oakland, CA
Project Number : GHA.19009

Dear Mr. Van Allen,

Chemical analysis of the samples referenced above has been completed. Summaries of the data are contained on the following pages. Sample(s) were received under documented chain-of-custody. US EPA protocols for sample storage and preservation were followed. Testing procedures comply with the 2003 NELAC and TNI 2009 standards. Laboratory results relate only to the samples tested. This report may be freely reproduced in full, but may only be reproduced in part with the express permission of Kiff Analytical, LLC.

Kiff Analytical, LLC is certified by the State of California under the Environmental Laboratory Accreditation Program (ELAP), lab number 08263CA.

If you have any questions regarding procedures or results, please call me at 530-297-4800.

Sincerely,

A handwritten signature in black ink that reads "Troy D. Turpen". The signature is written in a cursive, flowing style.

Troy Turpen



Report Number : 89247

Date : 09/29/2014

Project Name : **Shore Acres Gas- 403 E 12th St. Oakland, CA**

Project Number : **GHA.19009**

Sample : **Effluent**

Matrix : Air

Lab Number : 89247-01

Sample Date :09/25/2014

Parameter	Measured Value	Method Reporting Limit	Units	Analysis Method	Date/Time Analyzed
Benzene	< 0.050	0.050	ppmv	EPA 8260B	09/26/14 16:18
Toluene	< 0.050	0.050	ppmv	EPA 8260B	09/26/14 16:18
Ethylbenzene	< 0.050	0.050	ppmv	EPA 8260B	09/26/14 16:18
Total Xylenes	< 0.050	0.050	ppmv	EPA 8260B	09/26/14 16:18
Methyl-t-butyl ether (MTBE)	< 0.10	0.10	ppmv	EPA 8260B	09/26/14 16:18
TPH as Gasoline	< 5.0	5.0	ppmv	EPA 8260B	09/26/14 16:18
1,2-Dichloroethane-d4 (Surr)	101		% Recovery	EPA 8260B	09/26/14 16:18
Toluene - d8 (Surr)	101		% Recovery	EPA 8260B	09/26/14 16:18

Sample : **Influent**

Matrix : Air

Lab Number : 89247-02

Sample Date :09/25/2014

Parameter	Measured Value	Method Reporting Limit	Units	Analysis Method	Date/Time Analyzed
Benzene	15	1.0	ppmv	EPA 8260B	09/26/14 15:45
Toluene	67	1.5	ppmv	EPA 8260B	09/26/14 15:45
Ethylbenzene	20	1.5	ppmv	EPA 8260B	09/26/14 15:45
Total Xylenes	160	0.70	ppmv	EPA 8260B	09/26/14 15:45
Methyl-t-butyl ether (MTBE)	< 1.0	1.0	ppmv	EPA 8260B	09/26/14 15:45
TPH as Gasoline	2100	70	ppmv	EPA 8260B	09/26/14 15:45
1,2-Dichloroethane-d4 (Surr)	102		% Recovery	EPA 8260B	09/26/14 15:45
Toluene - d8 (Surr)	98.7		% Recovery	EPA 8260B	09/26/14 15:45

Report Number : 89247

Date : 09/29/2014

QC Report : Method Blank Data

Project Name : **Shore Acres Gas- 403 E 12th St. Oakland, CA**

Project Number : **GHA.19009**

<u>Parameter</u>	<u>Measured Value</u>	<u>Method Reporting Limit</u>	<u>Units</u>	<u>Analysis Method</u>	<u>Date Analyzed</u>
Benzene	< 0.050	0.050	ppmv	EPA 8260B	09/26/2014
Ethylbenzene	< 0.050	0.050	ppmv	EPA 8260B	09/26/2014
Toluene	< 0.050	0.050	ppmv	EPA 8260B	09/26/2014
Total Xylenes	< 0.050	0.050	ppmv	EPA 8260B	09/26/2014
Methyl-t-butyl ether (MTBE)	< 0.10	0.10	ppmv	EPA 8260B	09/26/2014
TPH as Gasoline	< 5.0	5.0	ppmv	EPA 8260B	09/26/2014
1,2-Dichloroethane-d4 (Surr)	99.4		%	EPA 8260B	09/26/2014
Toluene - d8 (Surr)	104		%	EPA 8260B	09/26/2014

<u>Parameter</u>	<u>Measured Value</u>	<u>Method Reporting Limit</u>	<u>Units</u>	<u>Analysis Method</u>	<u>Date Analyzed</u>
------------------	-----------------------	-------------------------------	--------------	------------------------	----------------------

GROUNDWATER LEVEL DATA FORM

PROJECT NAME: Shore Acres Gas
PROJECT MANAGER: MSS
SITE ADDRESS: 403 East 12th Street, Oakland, CA

PROJECT NUMBER: GHA.19009
TASK NUMBER: _____

WELL ID	TIME	DEPTH TO BOTTOM	DEPTH TO WATER	DEPTH TO PRODUCT	PRODUCT THICKNESS	PRODUCT THICKNESS X 0.8	COMMENTS
MW-1	1035	19.92	10.99				
MW-2	1030	19.95	12.49				
MW-3	1037	17.81	14.62				
MW-4	1032	18.79	11.61				
MW-5	1047	19.21	12.91				
MW-6	1034	19.92	10.68				
EW-1	1047	19.70	12.41				
EW-2	1045	19.82	16.80				
EW-3	1041	19.97	17.00				
EW-4	1039	19.95	12.48				

FIELD TECHNICIAN: DW
DATE: 9/19/14

PURGE/DEVELOPMENT FORM

PROJECT NAME: Shore Acres Gas **PROJECT NUMBER:** GHA.19009
PROJECT MANAGER: MSS **TASK NUMBER:** _____
SITE ADDRESS: 403 East 12th Street, Oakland, CA

WELL ID: MW-3 **TYPE OF WELL:** Monitoring

WATER COLUMN DATA: **WELL DIAMETER:**
 Well Total Depth: 17.81 ^(feet) 2-inch: _____
 Depth to Water: 11.62 4-inch: _____
 Water Column Length: 6.19 6-inch: _____

PURGE VOLUME CALCULATION:
 Water Column Length x Multiplier x No. Volumes = Purge Volume

$$\frac{6.19}{\text{Water Column Length}} \times \frac{0.17}{\text{Multiplier}} \times \frac{3}{\text{No. Volumes}} = \frac{3.25}{\text{Purge Volume}}$$

MULTIPLIER DATA:
 Multiplier for Schedule 40 PVC; Gallons/Linear Foot Based on Casing Diameter:
 2-inch: 0.17
 4-inch: 0.65
 6-inch: 1.5

PURGE METHOD: **SAMPLE METHOD:**
 Disposable Bailer Disposable Bailer
 PVC Bailer _____ Pump: _____
 Submersible Pump _____ Other: _____
 Other _____

TIME	VOLUME PURGED (gal)	pH	TEMP. (°C)	COND. (uS/cm)	DO (mg/l)	ORP (mV)	COMMENTS
1200	1.25	6.85	20.9	847			
1211	2.25	6.82	20.5	834			
1215	3.25	6.83	21.2	804			
1217							sample

FIELD TECHNICIAN: DWA
DATE: 9/19/14

PURGE/DEVELOPMENT FORM

PROJECT NAME: Shore Acres Gas **PROJECT NUMBER:** GHA.19009
PROJECT MANAGER: MSS **TASK NUMBER:** _____
SITE ADDRESS: 403 East 12th Street, Oakland, CA

WELL ID: MW 4 **TYPE OF WELL:** Monitoring

WATER COLUMN DATA: **WELL DIAMETER:**
 Well Total Depth: 18.79^(feet) 2-inch: _____
 Depth to Water: 11.61 4-inch: _____
 Water Column Length: 7.18 6-inch: _____

PURGE VOLUME CALCULATION:
 Water Column Length x Multiplier x No. Volumes = Purge Volume

$$\frac{7.18}{\text{Water Column Length}} \times \frac{0.17}{\text{Multiplier}} \times \frac{3}{\text{No. Volumes}} = \frac{3.75}{\text{Purge Volume}}$$

MULTIPLIER DATA:
 Multiplier for Schedule 40 PVC; Gallons/Linear Foot Based on Casing Diameter:
 2-inch: 0.17
 4-inch: 0.65
 6-inch: 1.5

PURGE METHOD: **SAMPLE METHOD:**
 Disposable Bailer Disposable Bailer
 PVC Bailer _____ Pump: _____
 Submersible Pump _____ Other: _____
 Other _____

TIME	VOLUME PURGED (gal)	pH	TEMP. (°C)	COND. (uS/cm)	DO (mg/l)	ORP (mV)	COMMENTS
1117	1.5	6.95	22.8	622			
1121	2.75	7.05	22.6	613			
1125	3.75	7.03	22.7	610			
1127							sample

FIELD TECHNICIAN: DW
DATE: 9/22/14

PURGE/DEVELOPMENT FORM

PROJECT NAME: Shore Acres Gas **PROJECT NUMBER:** GHA.19009
PROJECT MANAGER: MSS **TASK NUMBER:** _____
SITE ADDRESS: 403 East 12th Street, Oakland, CA

WELL ID: MW-6 **TYPE OF WELL:** Monitoring

WATER COLUMN DATA: (feet)
 Well Total Depth: 19.92
 Depth to Water: 10.68
 Water Column Length: 9.24

WELL DIAMETER:
 2-inch: _____
 4-inch: _____
 6-inch: _____

PURGE VOLUME CALCULATION:
 Water Column Length x Multiplier x No. Volumes = Purge Volume

$$\frac{9.24}{\text{Water Column Length}} \times \frac{0.17}{\text{Multiplier}} \times \frac{3}{\text{No. Volumes}} = \frac{4.75}{\text{Purge Volume}}$$

MULTIPLIER DATA:
 Multiplier for Schedule 40 PVC; Gallons/Linear Foot Based on Casing Diameter:

2-inch: 0.17
 4-inch: 0.65
 6-inch: 1.5

PURGE METHOD: **SAMPLE METHOD:**

Disposable Bailer _____ Disposable Bailer _____
 PVC Bailer _____ Pump: _____
 Submersible Pump _____ Other: _____
 Other _____

TIME	VOLUME PURGED (gal)	pH	TEMP. (°C)	COND. (uS/cm)	DO (mg/l)	ORP (mV)	COMMENTS
1134	1.75	6.96	21.4	604			
1138	3.5	6.98	21.2	597			
1142	4.75	7.02	21.7	580			
1144							sample

FIELD TECHNICIAN: DWA
DATE: 9/19/14