

DRILL RIG: Mobile B-40

SURFACE ELEVATION: -

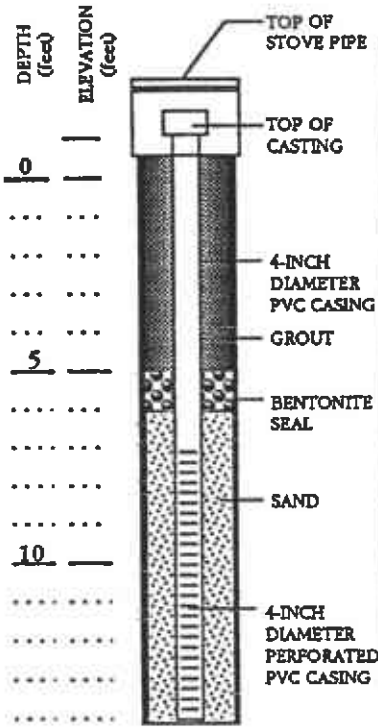
LOGGED BY: TR

DEPTH TO GROUNDWATER:  
(From Surface Elevation)

9.0 feet

BORING DIAMETER: 12 inches

DATE DRILLED: 6/8/93



DEPTH (feet)	ELEVATION (feet)	DESCRIPTION	SYMBOL	CONSISTENCY	SOIL TYPE	LEGEND	DEPTH (feet)	SAMPLER	WATER CONTENT (%)	PENETRATION RESISTANCE (BLOWS/FT.)	ORGANIC VAPORS (ppm)
0		Silty gravel, minor sand	Af		GM						
0		Clayey silt fill, black, moist, trace coarse sand, glass and wood bits	Af	Very stiff	ML				24	800	
5		Silty clay, brown and light gray mottled, low plasticity, moist, trace coarse sand and fine gravel Minor gravel at 7.0 feet	B	Hard	CL		5		63	150	
10		Sandy clay, brown, fine to medium grained sand, moderate plasticity, moist to wet More coarse sand, wet to saturated at 9.0 feet	C	Hard	CL		10		63	1.5	
13		Interbedded layers of sandy silt, moist at 13.0 feet									9
14		Bottom of Well = 14.0 feet					15				
20							20				
25							25				
30							30				

864-17A, 6/29 TR\*EB

MONITORING WELL LOG - MW-1  
EMERYVILLE POST OFFICE  
Emeryville, California

DRILL RIG: Mobile B-40

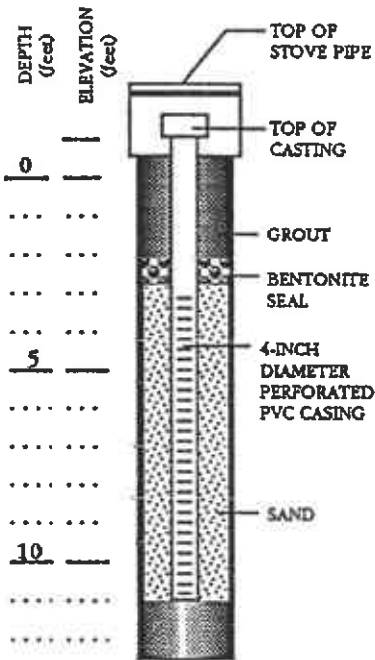
SURFACE ELEVATION: -

LOGGED BY: TR

DEPTH TO GROUNDWATER: 4.0 feet  
(From Surface Elevation)

BORING DIAMETER: 12 inches

DATE DRILLED: 6/8/93



DEPTH (feet)	ELEVATION (feet)	DESCRIPTION	SYMBOL	CONSISTENCY	SOIL TYPE	LEGEND	DEPTH (feet)	SAMPLER	WATER CONTENT (%)	PENETRATION RESISTANCE (BLOWS/FT.)	ORGANIC VAPORS (ppm)
0		Gravelly sand, minor silt	Af		SM						
...		Clayey silt fill, black, moist to wet	Af	Stiff	ML					11	90
5		Saturated at 4.0 feet Moderate kerosene odor at 5.5 feet Moist to wet at 6.0 feet					5		▽	12	1000
...		Silty clay to clayey silt, brown with light gray mottling, moderate plasticity, minor fine to coarse sand, trace fine gravel, saturated	B	Hard	CL/ML		10			37	NA
10		Less sand and no gravel at 11.0 feet, moist								50	5
15		Bottom of Well = 12.5 feet					15				
20							20				
25							25				
30							30				

864-17A, 6/29 TR\*EB

MONITORING WELL LOG - MW-2  
EMERYVILLE POST OFFICE  
Emeryville, California

DRILL RIG: Mobile B-40

SURFACE ELEVATION: -

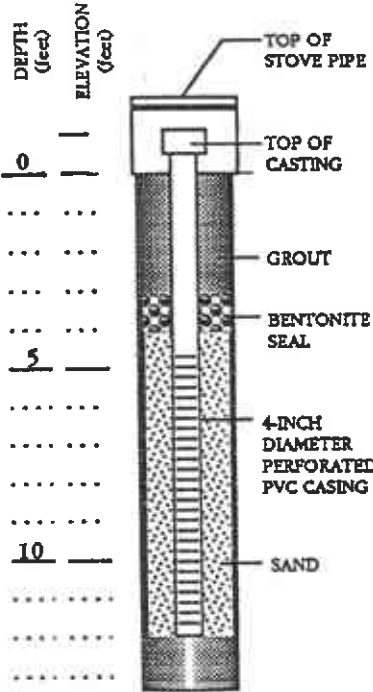
LOGGED BY: TR

DEPTH TO GROUNDWATER:  
(From Surface Elevation)

9.5 feet

BORING DIAMETER: 12 inches

DATE DRILLED: 6/8/93



DEPTH (feet)	ELEVATION (feet)	DESCRIPTION	SYMBOL	CONSISTENCY	SOIL TYPE	LEGEND	DEPTH (feet)	SAMPLER	WATER CONTENT (%)	PENETRATION RESISTANCE (BLOWS/FT.)	ORGANIC VAPOURS (ppm)
0		Gravelly silt fill, dark gray with brown and reddish-brown mottling, minor coarse sand, slightly moist	Af	Hard	ML						
		↑ FILL									
5		Clayey silt, greenish-gray, minor fine sand, moist to wet, moderate to strong petroleum odor	B	Hard	ML		5			80+	NA
		More sand at 8.0 feet								42	1000+
10		Silty sand to sandy silt, fine grained sand, greenish-gray, wet, moderate petroleum odor, sand size increase to coarse at 9.5 feet, saturated, trace gravel	C	Hard	SM/ML		10		∇		250
		Silty clay, brown, moderate to high plasticity, moist	D	Hard	CL						2
15		Bottom of Well = 13.5 feet					15				
20							20				
25							25				
30							30				

NOTE: The stratification lines represent the approximate boundary between the soil types. The transition may be gradual.

864-17A, 6/29 TR\*EB

MONITORING WELL LOG - MW-3  
EMERYVILLE POST OFFICE  
Emeryville, California

DRILL RIG: Mobile B-40

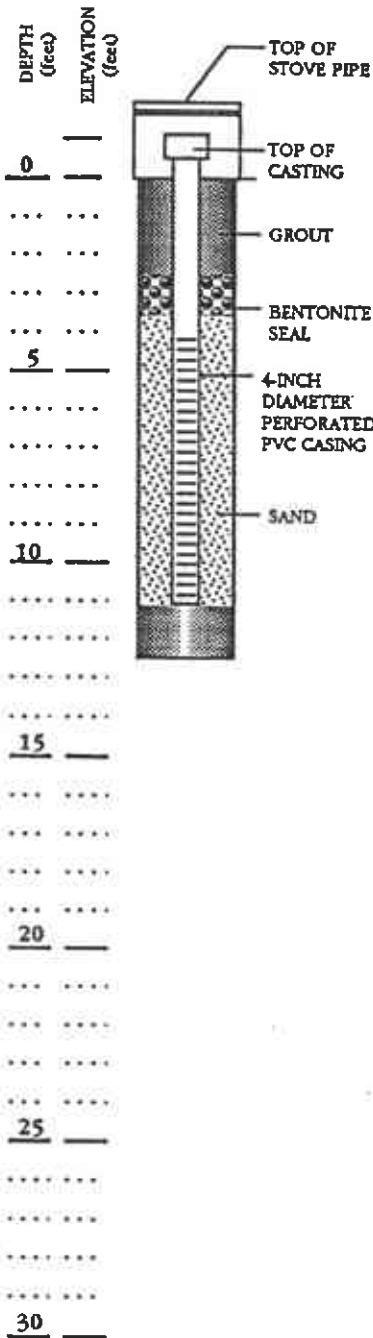
SURFACE ELEVATION: -

LOGGED BY: TR

DEPTH TO GROUNDWATER: 5.5 feet  
(From Surface Elevation)

BORING DIAMETER: 12 inches

DATE DRILLED: 6/8/93



DESCRIPTION	SYMBOL	CONSISTENCY	SOIL TYPE	LEGEND	DEPTH (feet)	SAMPLER	WATER CONTENT (%)	PENETRATION RESISTANCE (BLOWS/FT.)	ORGANIC VAPORS (ppm)
Gravelly silt, dark gray, moist	Af		SM	[Pattern]	0 - 1.5				
↑ FILL					1.5 - 2.0				
Clayey silt, brown and light gray mottled, moist	B	Hard	ML	[Pattern]	2.0 - 5.5		52	NA	
Greenish-gray, moderate petroleum odor, saturated at 5.5 feet More clay and sand at 6.5 feet					5.5 - 6.5		44	1000	
Sandy silt, greenish-gray, fine to medium grained sand, moderate petroleum odor Interbedded layers of sandy clay, moist Coarse sand and gravel lense at 9.0 feet, saturated	C	Hard	ML	[Pattern]	6.5 - 9.0		43	600	
Sandy clay, moist observed in cuttings	C		CL	[Pattern]	9.0 - 10.0				
Clayey sand, reddish-brown, fine to medium grained sand, trace fine gravel, saturated, no petroleum odor	C		SC	[Pattern]	10.0 - 12.5		50 for 6'	20	
Bottom of Well = 12.5 feet					12.5				
					15				
					20				
					25				
					30				

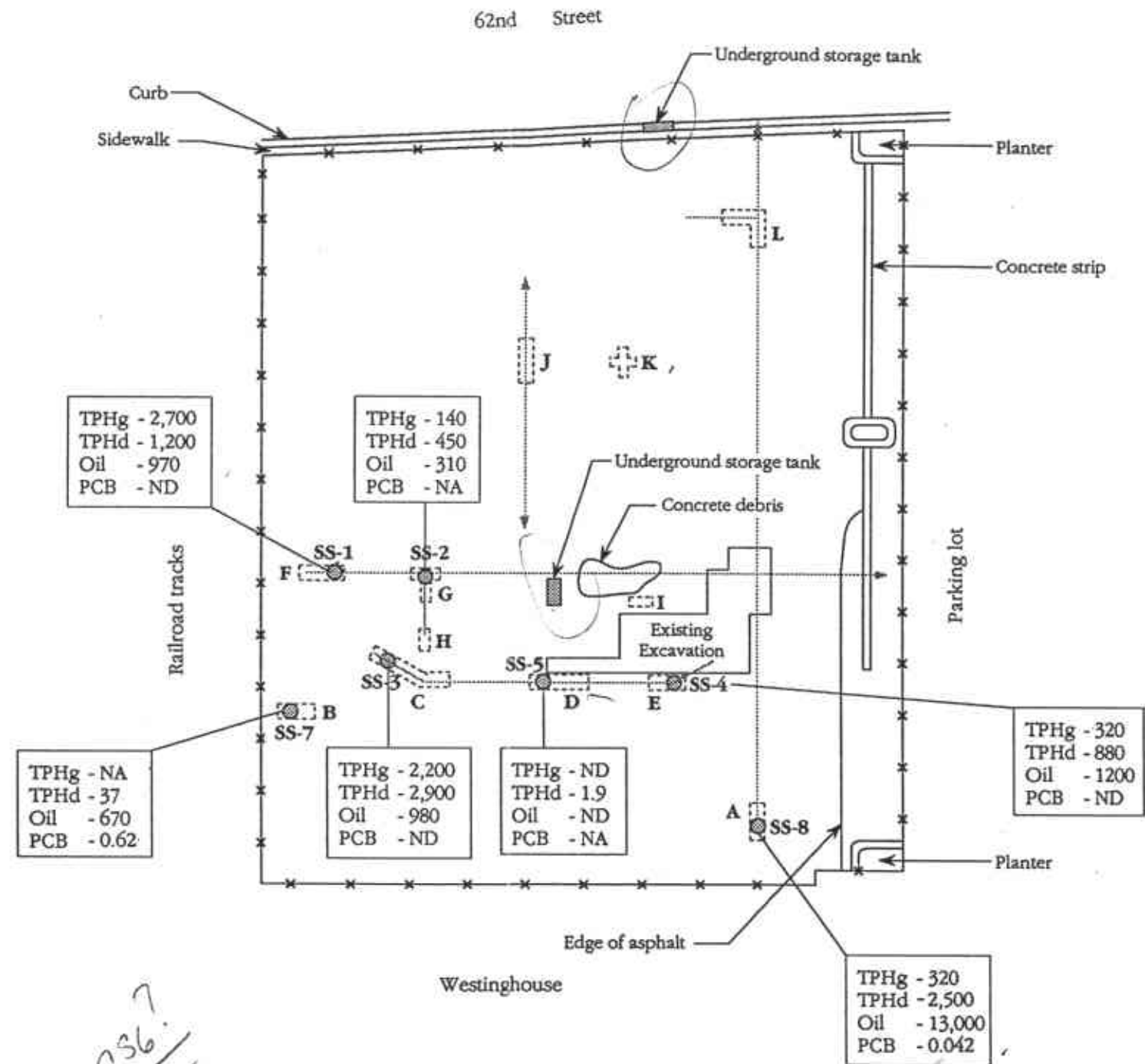
864-17A, 6/29 TR\*EB

NOTE: The stratification lines represent the approximate boundary between the soil types. The transition may be gradual.

MONITORING WELL LOG - MW-4  
EMERYVILLE POST OFFICE  
Emeryville, California



Approximate Direction of Regional Ground Water Flow



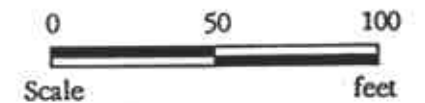
**LEGEND**

- TPHg - Total petroleum hydrocarbons as gasoline
- TPHd - Total petroleum hydrocarbons as diesel
- Oil - Total petroleum oil
- PCBs - Polychlorinated byphenols
- ND - Not detected
- NA - Not analyzed

Note: Petroleum hydrocarbon levels shown represent the highest concentrations detected at each sample location

*SS-6?*

Base by Norcal, dated 2/93.



**PETROLEUM HYDROCARBON AND PCB CONCENTRATIONS (ppm)**

EMERYVILLE POSTAL FACILITY  
Emeryville, California

**LOWNEY ASSOCIATES**  
Environmental / Geotechnical / Engineering Services

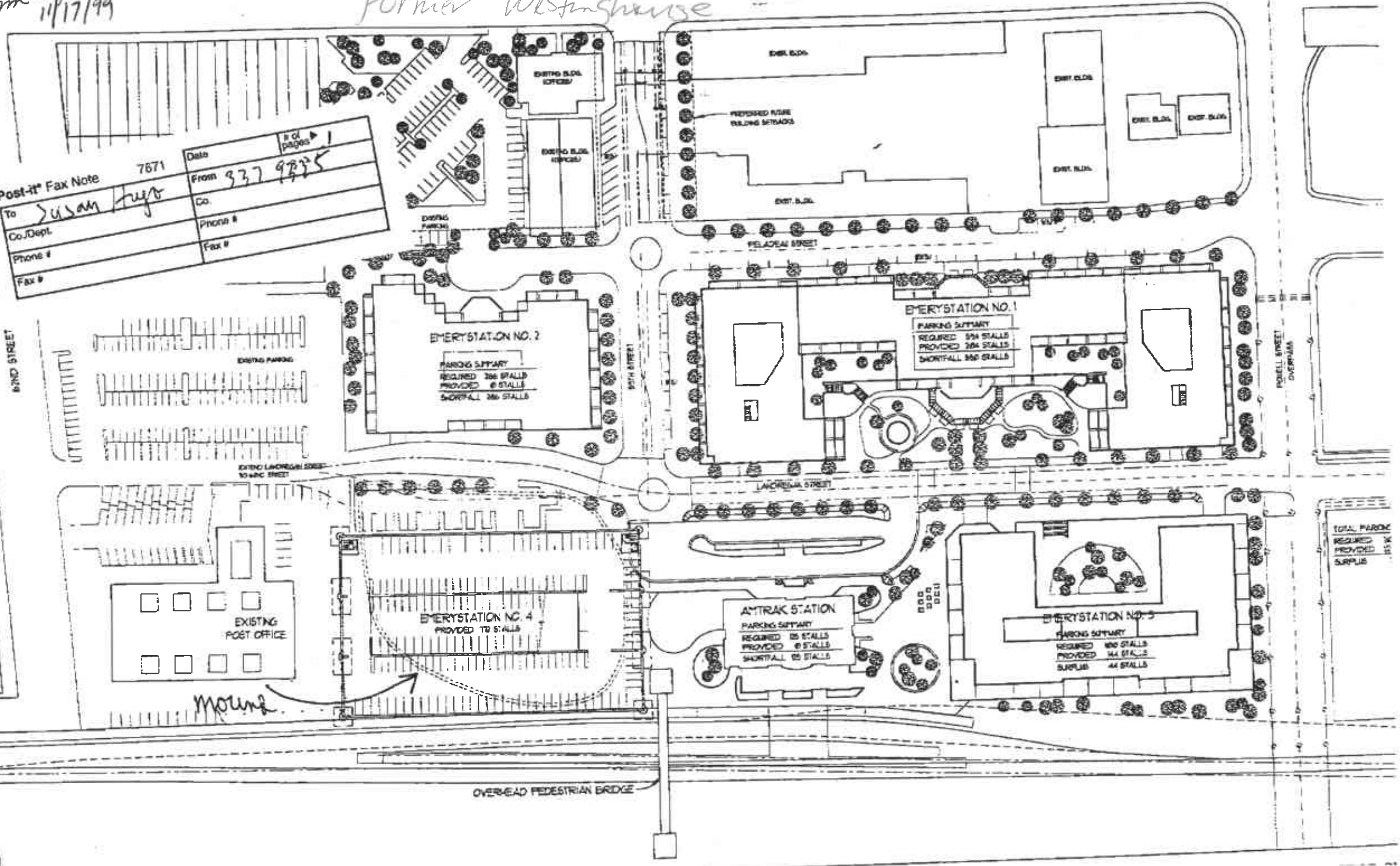
FIGURE 3  
864-17, April 1993

From Ignacio Lopez  
11/17/99

Former Westinghouse

Post-it Fax Note 7671

To	Susan Hays	Date		# of pages	1
Co./Dept.		From	937 9835		
Phone #		Co.			
Fax #		Phone #			
		Fax #			



TOTAL PARKING	854
REQUIRED	854
PROVIDED	854
SURPLUS	0

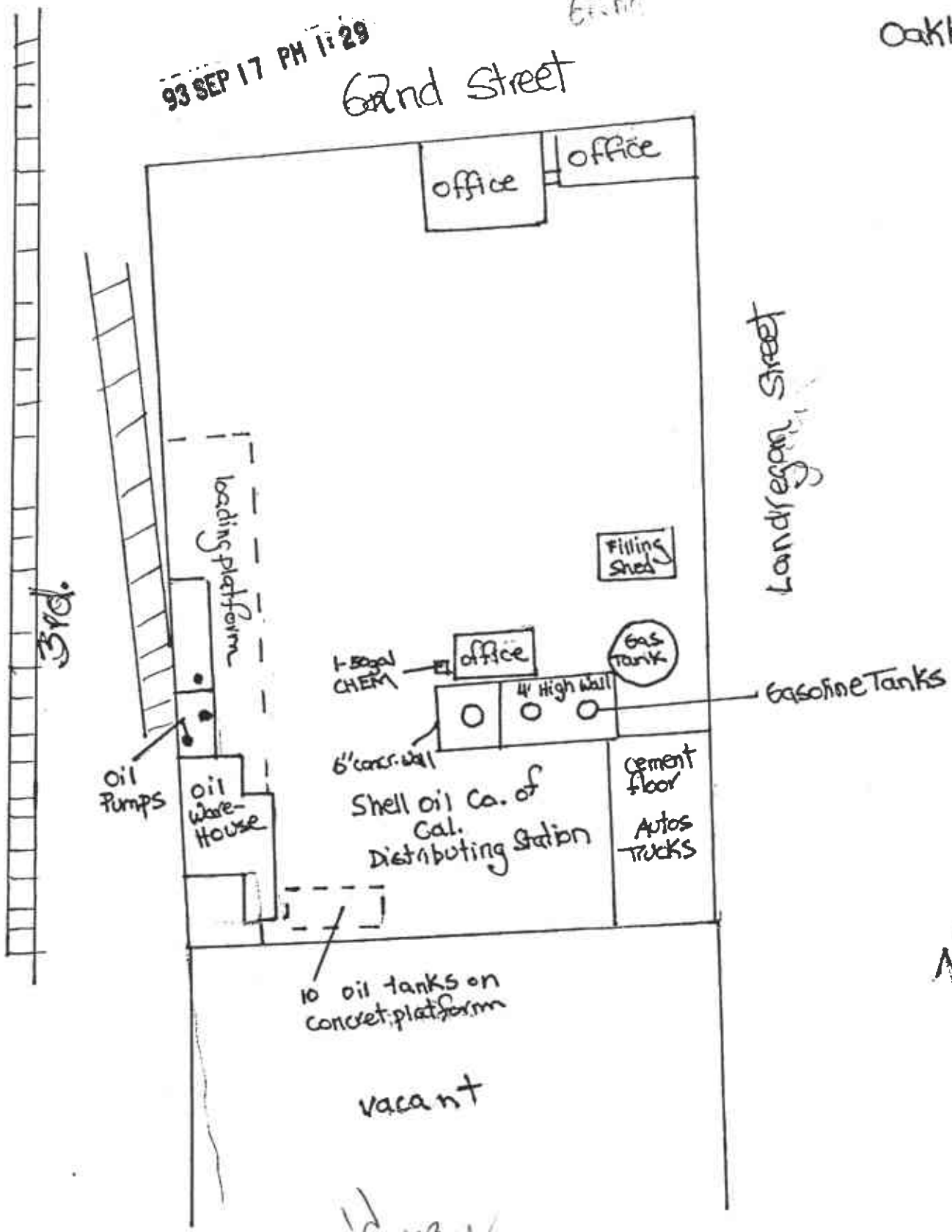
Vacant Standard Undergrnd cable Factory  
1930 Sanborn  
MAP

93 SEP 17 PM 1:29

62nd Street  
62nd

Oakland V.3  
Pg. 262

Westing  
house  
→



Landreghon Street



rec'd  
9/17/93  
SMA

Standard Oil  
↓

Union +  
Westinghouse  
↘