



facsimile transmittal

To: eva cheu

Fax Number:

From: NATHAN KING

Date: (510) 337-9335

Re: AC TRANSIT  
EMERYVILLE

Pages: 2

EVA-

SORRY FOR THE CONFUSION - I BELIEVE  
YOU HAVE THIS MAP FROM THE PREVIOUS  
QUARTERLY REPORT. MONITOR WELL W-2  
IS THE DAMAGED WELL. WE ARE  
STILL WAITING ON ANALYTICALS FOR  
THIS SITE TO COMPLETE REPORT.

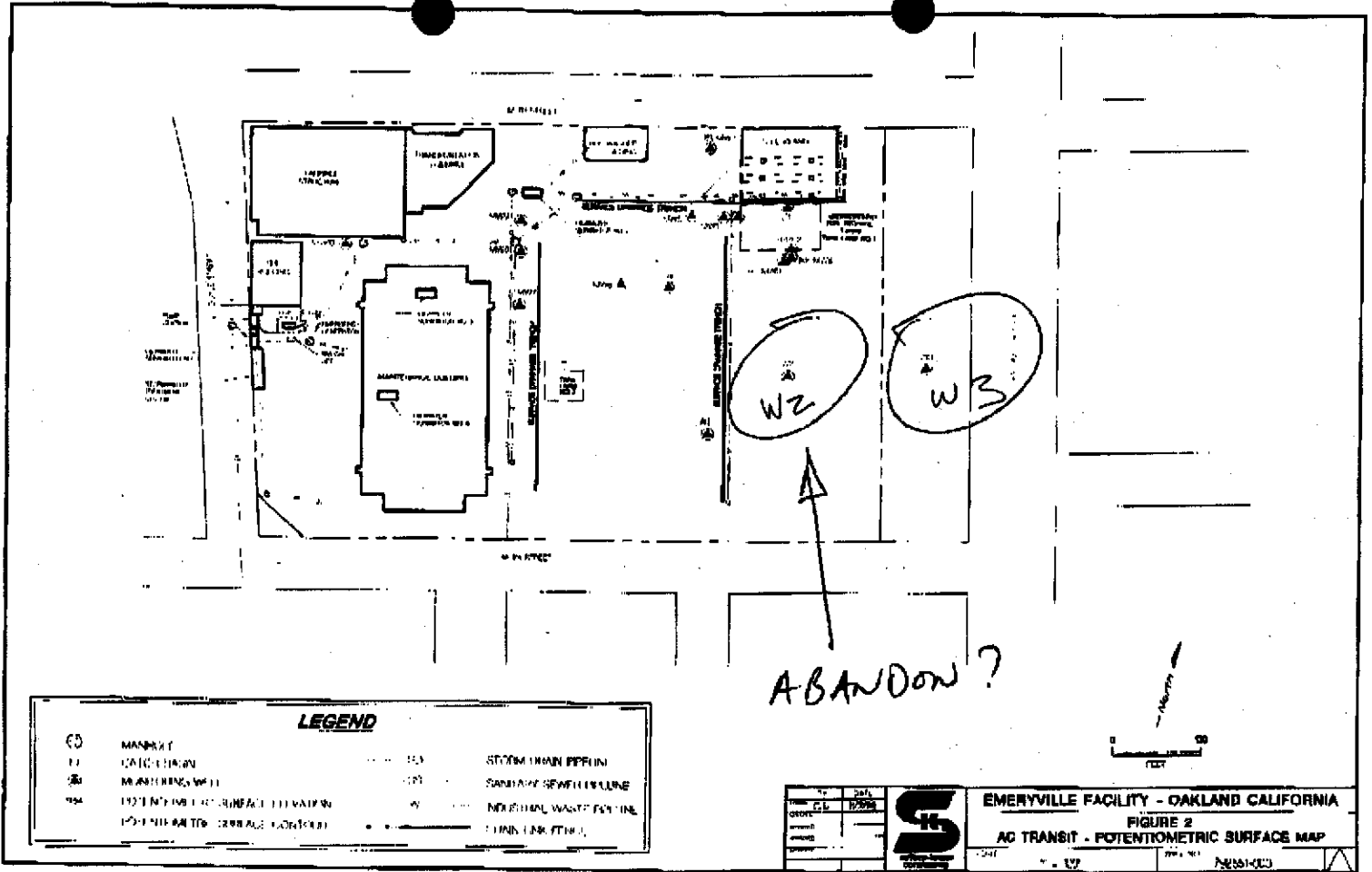
THANKS

NATHAN

**SAFETY-KLEEN**

2233 Santa Clara Avenue, Suite #7 Alameda California 94501

Main: (510) 337-8661 FAX (510) 337-3994



- W-2 is sand, but damaged

- is W-3 sand?

OK to decom W-2, even W-3 if located