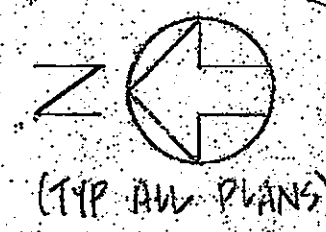


1 2 3 4

FOR SECONDARY CONTAINMENT LINER
LIMIT AT THIS SIDE ONLY SEE
NOTE SECTION (A)
G-3



SOLVENT WASTE TANK
3000 GAL

SUCTION
GAUGE
VENT

FILL
GAUGE
36" MANHOLE
WITH 22" MANWAY
VENT

CONCRETE SLAB
FOR TANK
HOLD DOWNS

SOLVENT TANK UT
3000 GAL

FLEXIBLE PIPE
CONNECTOR (TYP)
VENT (TYP OF 3)
EXTRACTOR (TYP OF 3)

SUCTION (TYP OF 3)
FILL (TYP OF 3)

36" MANHOLE
WITH 22" MANWAY
(TYP OF 3)

SUCTION
GAUGE
VENT

AUTOMATIC TRANSMISSION
FLUID TANK
REC'D SAL UT
3

ENGINE COOLANT TANK UT
2

WHITE OIL TANK UT
4000 GAL

ENGINE OIL TANK UT
1

2" VENTS

SECONDARY
CONTAINMENT LINER

SURFACE DRAINAGE
TRENCH

WO
SOLV
SOLV
EON

EC
SOL
SOLW

4'-7"

44'-0"

A

B

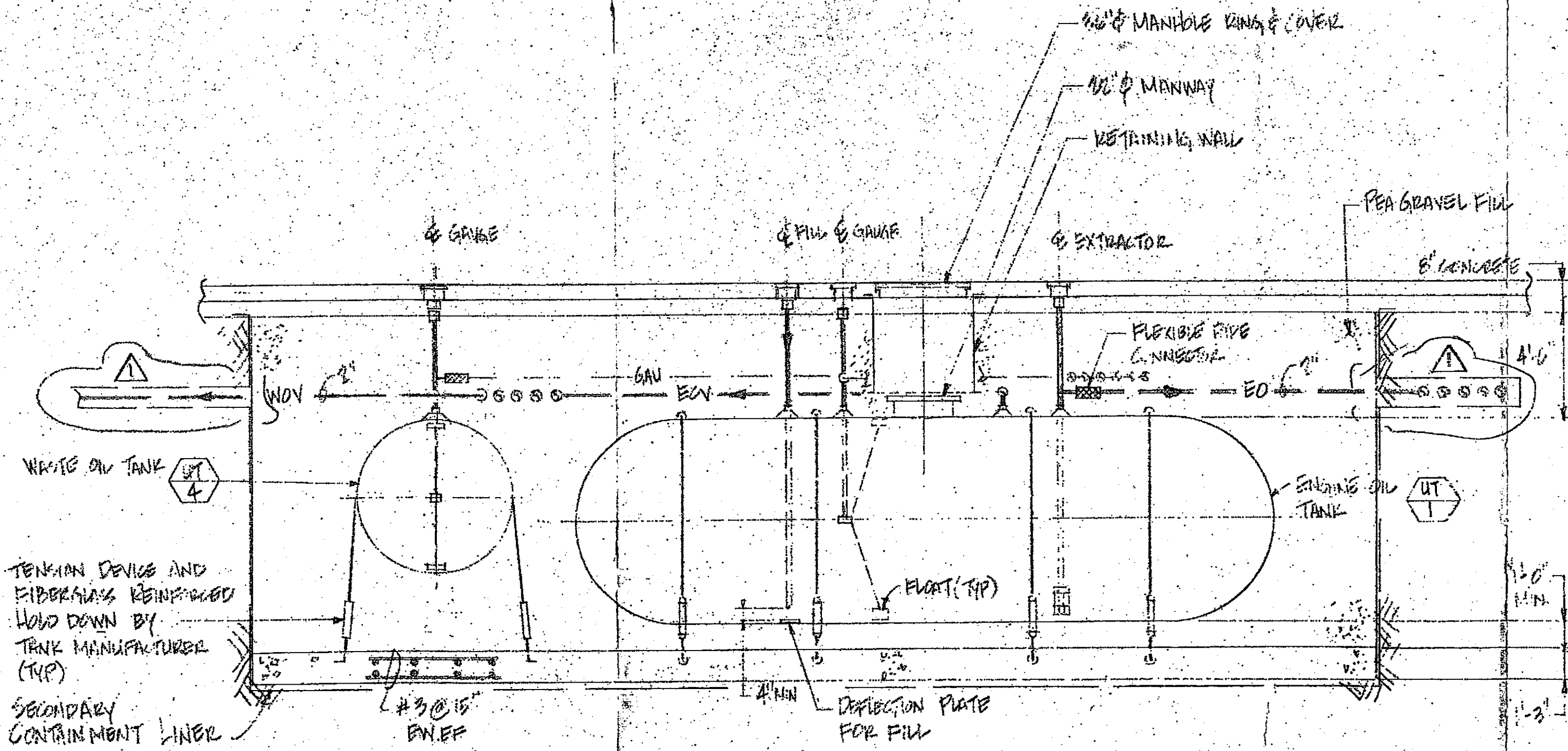
C

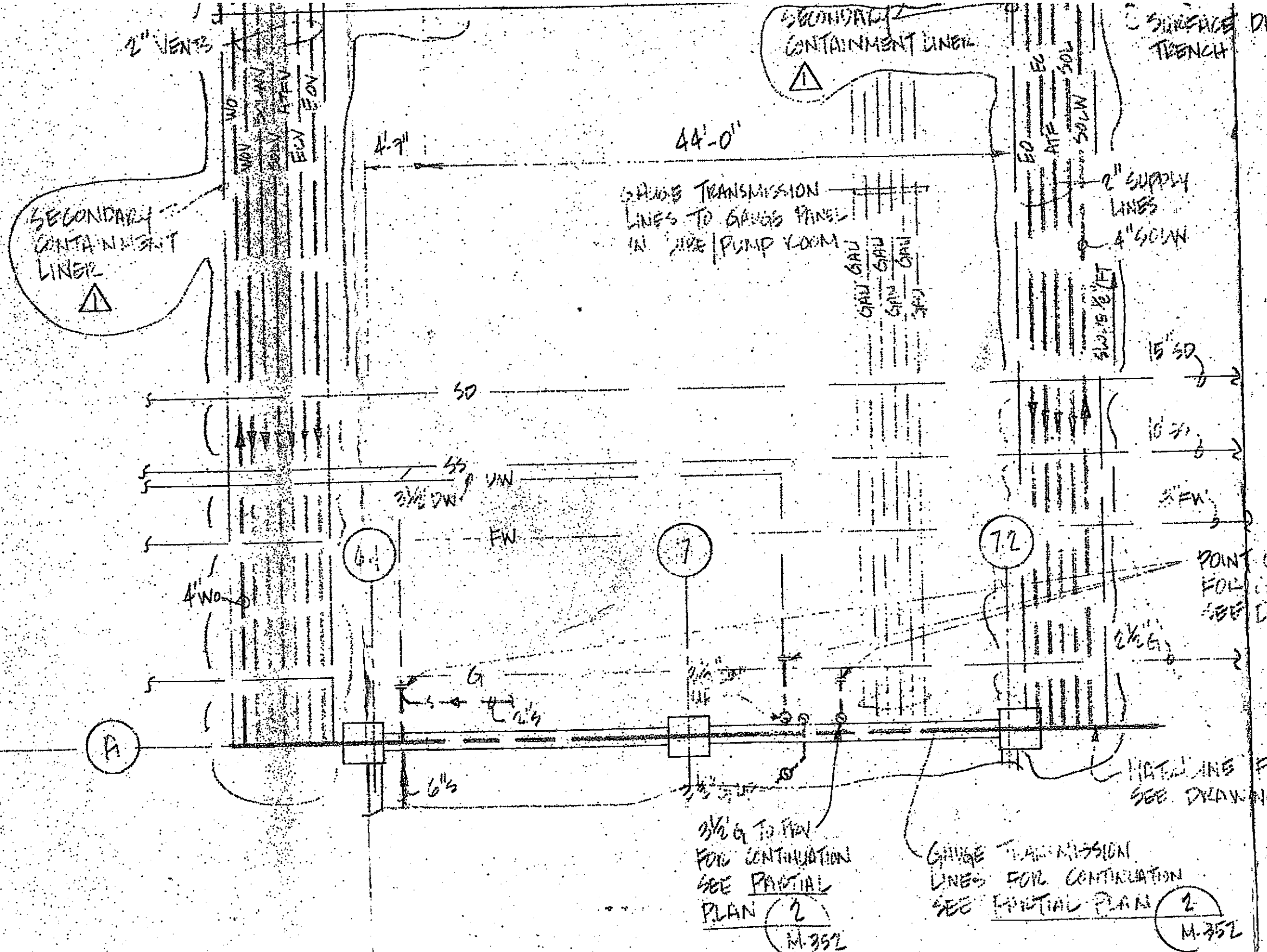
5

6

7

8





BASEMENT PLAN

SCALE: 1/8" = 1'-0"

C

D

E

60'-0"

44'-0"

2" VENTS

SECONDARY CONTAINMENT LINER

SECONDARY CONTAINMENT LINER

SURFACE TRENCH

GAUGE TRANSMISSION LINES TO GAUGE PANEL IN FIRE PUMP ROOM

2" SUPPLY LINES
4" SOLW

NO
WV
SOLV
ATEV
EUV
EUV

GAU
GAU
GAU

EO
ATE
SOLW

2" S
SLOPE 1/8" / FT

15' SD

SD

10' SD

SS

3" FW

2 1/2" DW

FW

POINT OF FOL... SEE DR

4" WO

2 1/2" E

6" G
4" G

NOTE: LINE FA SEE DRAWING

3/4" G TO FAN FOR CONTINUATION SEE PARTIAL PLAN (2) M-352

GAUGE TRANSMISSION LINES FOR CONTINUATION SEE PARTIAL PLAN (2) M-352

A

64

7

72

(2) M-352

SEE DETAIL

7
M-359

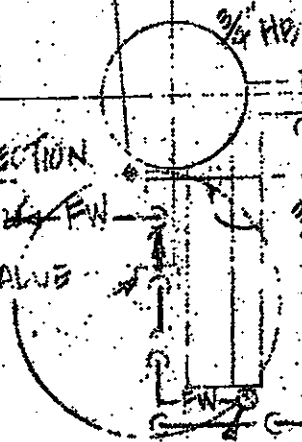
6

POINT OF CONNECTION (P.O.C.)
PL. CONTINUATION
SEE DRAWING

A

2" FW TO INSPECTION
AREA

1" FW TO WEST ALIVE

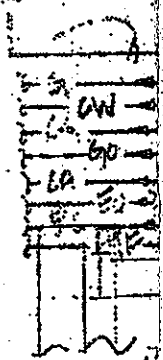


PL. CONTINUATION
DRAWING M-350

6" FW TO CENTRAL CORE
WITH 7/8" FLOW LIMITERS,
(1) FOR EACH FLOOR

6" FW TO REPAIR AREA

A



5-55555555

1" RIF, 1" EC, 1" EA, 3" A,
1" CO, 3/4" CO, 2" CW, 2 1/2" G

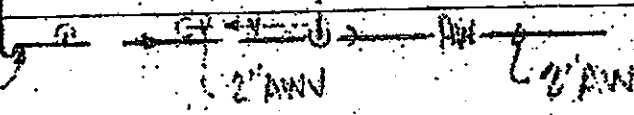
BATTERIES

117

BATTERY SINK

2" FD-4

EL + 29.00'

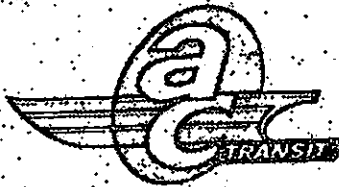


6" TO MAIN PS
INV. EL + 29.50

SECTION

B

SCALE: 1/4" = 1'-0"



AC Transit

APPROVED

DATE

JOB No. 251

4

5

6

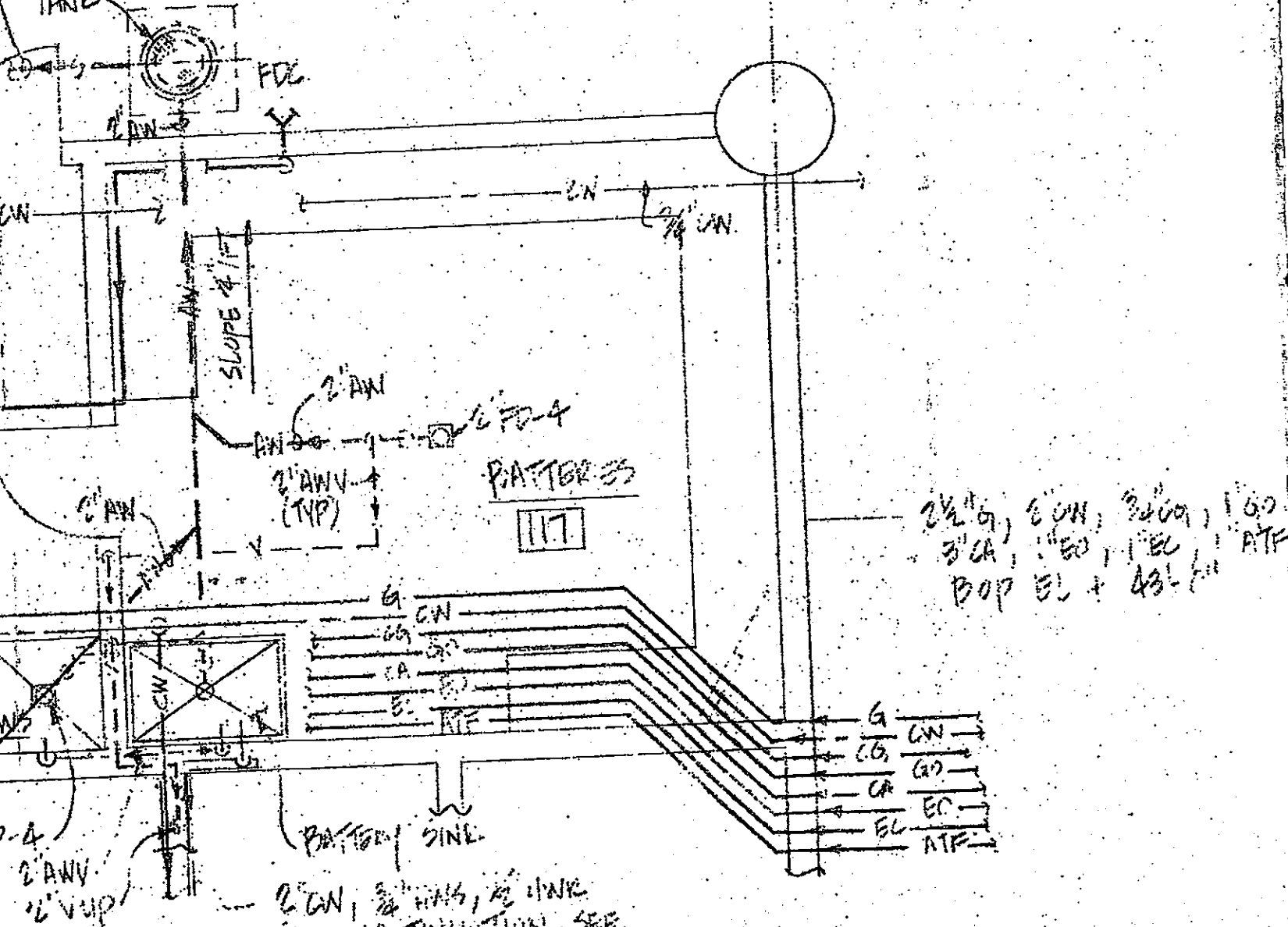
SECTION



SCALE: 1/4" = 1'-0"

2'S FOR CONTINUATION
SEE BASEMENT PLAN
THIS DRAWING

18" ACID DILUTION
TANK



2" CW, 3/4" HWS, 1/2" HWK
FOR CONTINUATION SEE
PARTIAL PLAN 10

M-355

FOR DOMESTIC WATER SUPPLY
SEE PARTIAL ISOMETRIC

2
14-356

11/5/85

ACCEPTED
T. Miller
Telephone (415) 857-434

These plans have been reviewed and found to be acceptable and essentially meet the requirements of State and local health laws. Changes to your plans indicated by the Health Department are to assure compliance with State and local laws. The project proposed herein is now suitable for issuance of any required building permits for construction.

One copy of these accepted plans must be at the job and available to all contractors and craftsmen involved with the construction and installation.

Any changes or alterations of trade plans and specifications must be submitted to the Health Department and to the Building Inspection Department to determine if such changes meet the requirements of State and local laws.

Notify the Health Department at least 48 hours prior to the following required inspections:

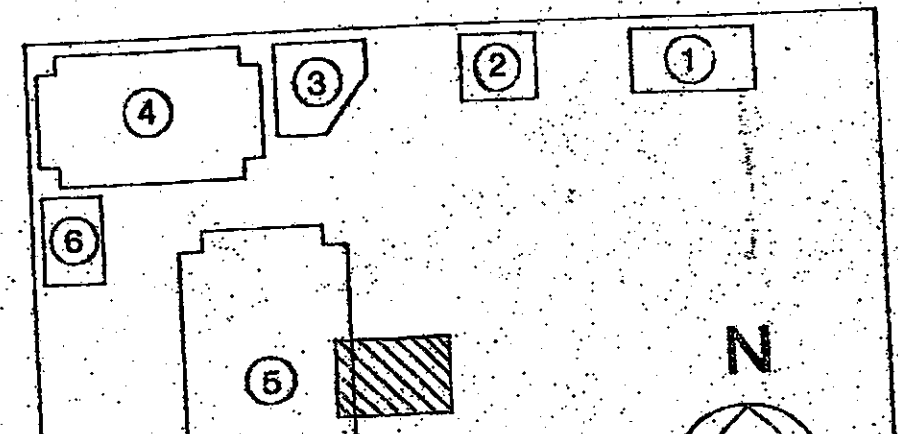
Covering of Tank & Piping

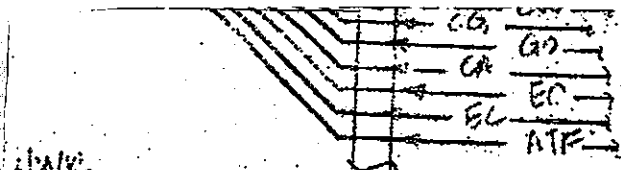
Approval to operate dependent on compliance with accepted plans and all applicable local laws and regulations.

INVESTIGATOR
DIVISION OF ENVIRONMENTAL HEALTH
400 - 2nd St., 2nd Floor, Oakland, CA 94612

RECEIVED
NOV 1 1985
ENVIRONMENTAL HEALTH
ADMINISTRATION

RECEIVED
NOV 1 1985
ENVIRONMENTAL HEALTH
ADMINISTRATION



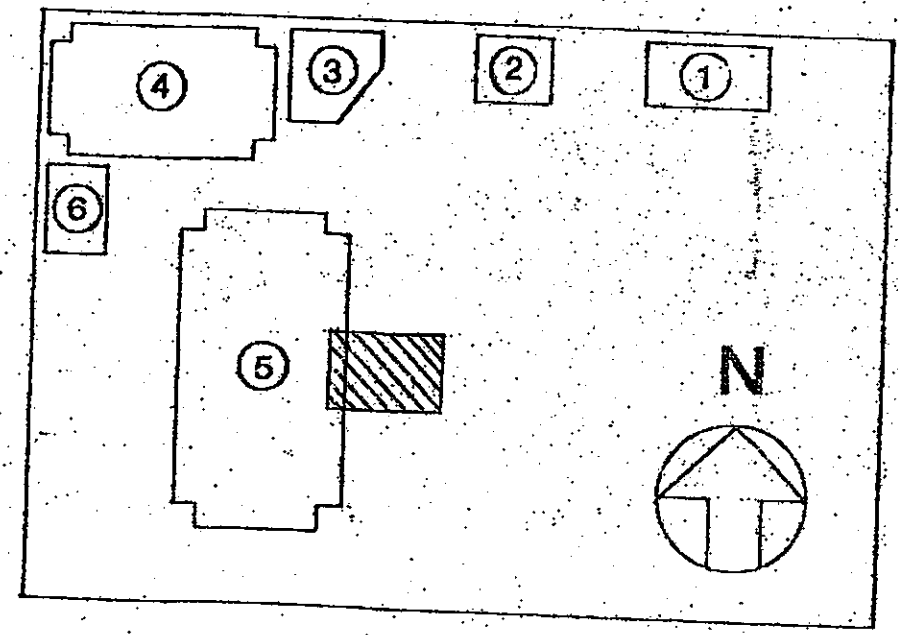


1/1/84
IN SEE
10
M-355

FOR DOMESTIC WATER SUPPLY
SEE PARTIAL ISOMETRIC

2
M-355

1
M-355



KEY PLAN

LEGEND

- ① SERVICE BUILDING
- ② BUS WASHER BUILDING
- ③ TRANSPORTATION BUILDING
- ④ PARKING STRUCTURE
- ⑤ MAINTENANCE BUILDING
- ⑥ TIRE BUILDING

DESCRIPTION	DATE	PROFESSIONAL SEAL
DESIGNED BY <i>HAF</i>	3/2/84	
DRAWN BY <i>HAF</i>	3/5/84	
CHECKED BY <i>[Signature]</i>	3/30/84	
APPROVED BY <i>[Signature]</i>	5/30/84	
APPROVED BY HAF		
SCALE: AS NOTED		

DIV. 2, EMERYVILLE RECONSTRUCTION

MAINTENANCE BUILDING

**PARTIAL PLANS & SECTIONS
PIPING - SHEET 1**

DWG No. <i>D-4-M-351</i>	REVISION R-1	CONTRACT: <i>D-4</i>	SHEET No. <i>02</i>
--------------------------	-----------------	----------------------	------------------------

8

9

10