

70 95

6920 Koll Center Parkway
Suite 216
Pleasanton, CA 94566
925.426.2600
Fax 925.426.0106



February 13, 2003

Betty Graham
California Regional Water Quality Control Board
1515 Clay Street, Suite 1400
Oakland, California 94612

Alameda County
FEB 18 2003
Environmental Health

Clayton Project No.70-00509.00

Subject: Corrected Figures for Annual Summary and Fourth Quarter 2002
Groundwater Monitoring Report at 5050, 5051, and 5200 Coliseum Way
Oakland, California SLIC No. 01S0422 (BG)

Dear Ms. Graham:

Please find attached the corrected Figures 2-7 for the Annual Summary and Fourth Quarter 2002 Groundwater Monitoring Report for the Coliseum Way Properties referenced above, that was recently sent to you. It appears that an interface error occurred that caused some text on the figures to be blocked out when these figures were sent to our color printer during the production process and was not discovered until the reports were sent out. Please replace the old figures with the attached corrected figures. We apologize for any inconvenience that this might have caused.

Thank you for this opportunity to be of service. If you have any questions, please contact me at (925) 426-2679 or Dwight Hoenig at (925) 426-2686.

Sincerely,

A handwritten signature in black ink, appearing to read "Donald A. Ashton".

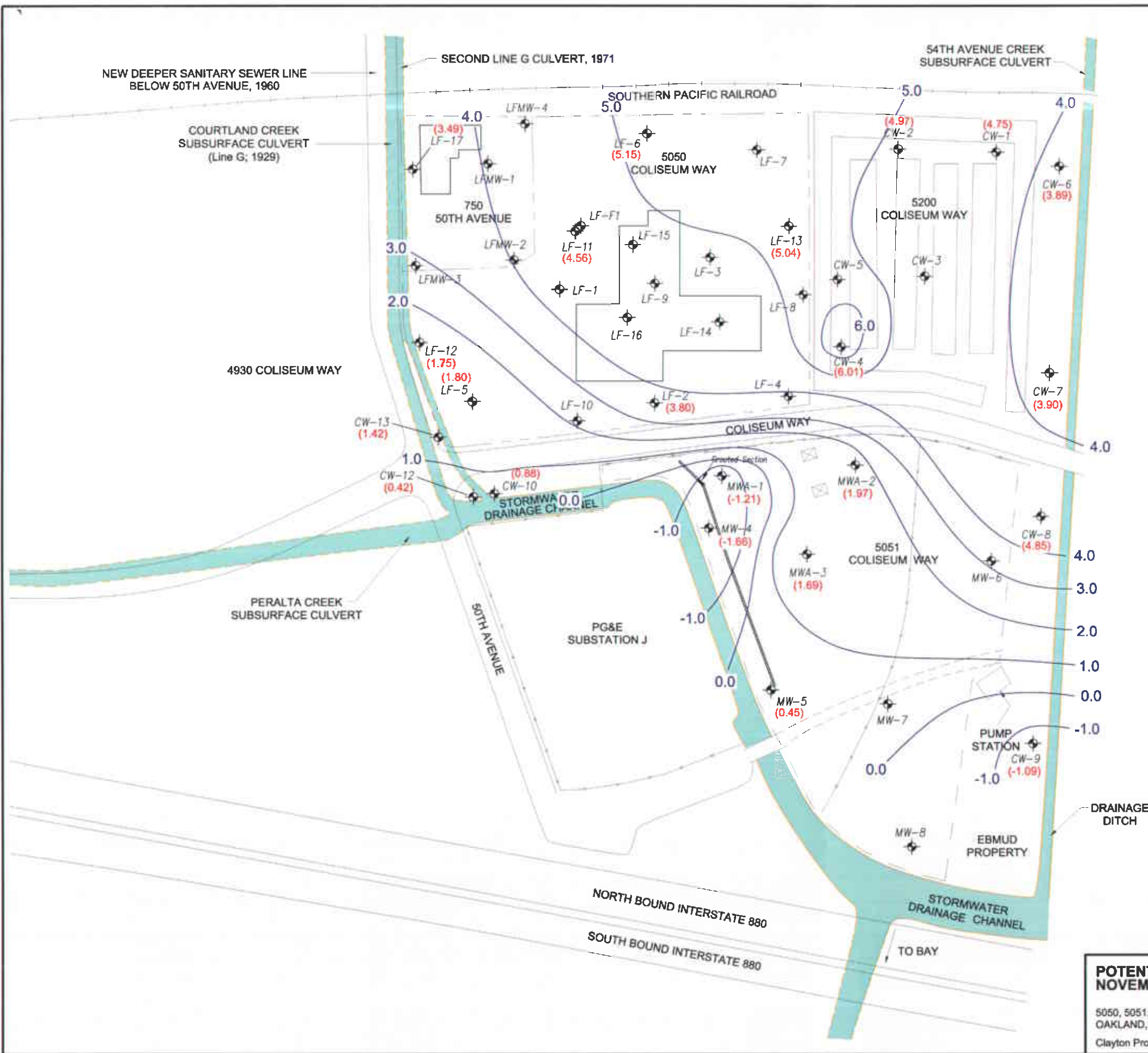
Donald A. Ashton
Senior Geologist
Environmental Services

DAA/daa

cc: Matthew Robison
Barney Chan
Tim Colvig
William Wick

Attachments

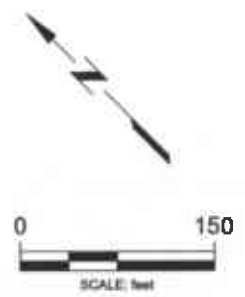
PLS:\ES\PROJECTS\2000\p00509 Coliseum\00509L34 BG.doc



LEGEND:

- Monitoring Well Location
- Barrier Wall
(Sheetpile constructed October-November 2001. Portion grouted on June 17, 2002)
Line indicates sheetpiles where dashed and grouted where solid.
Reference: Survey of Sheet Pile Barrier Wall, RBF Consulting, April 2002.
- (3.80) Potentiometric Surface Elevation (ft msl)
- 5.0 Potentiometric Surface Elevation Contour

Alameda County
 FEB 18 2003
 Environmental Health



**POTENTIOMETRIC SURFACE MAP
 NOVEMBER 19, 2002**

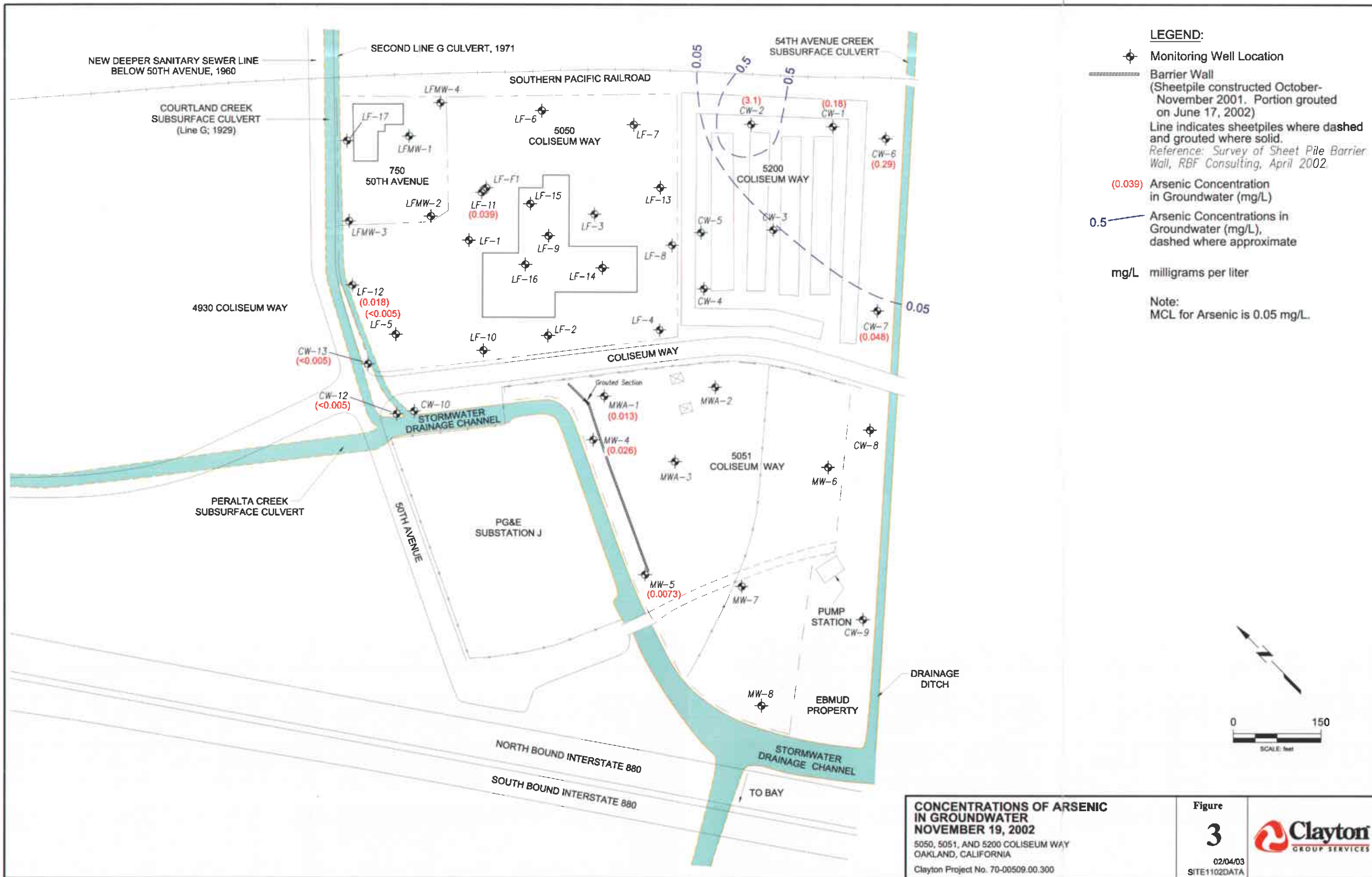
5050, 5051, AND 5200 COLISEUM WAY
 OAKLAND, CALIFORNIA
 Clayton Project No. 70-00509.00.300

Figure

2

02/04/03
 SITE1102DATA

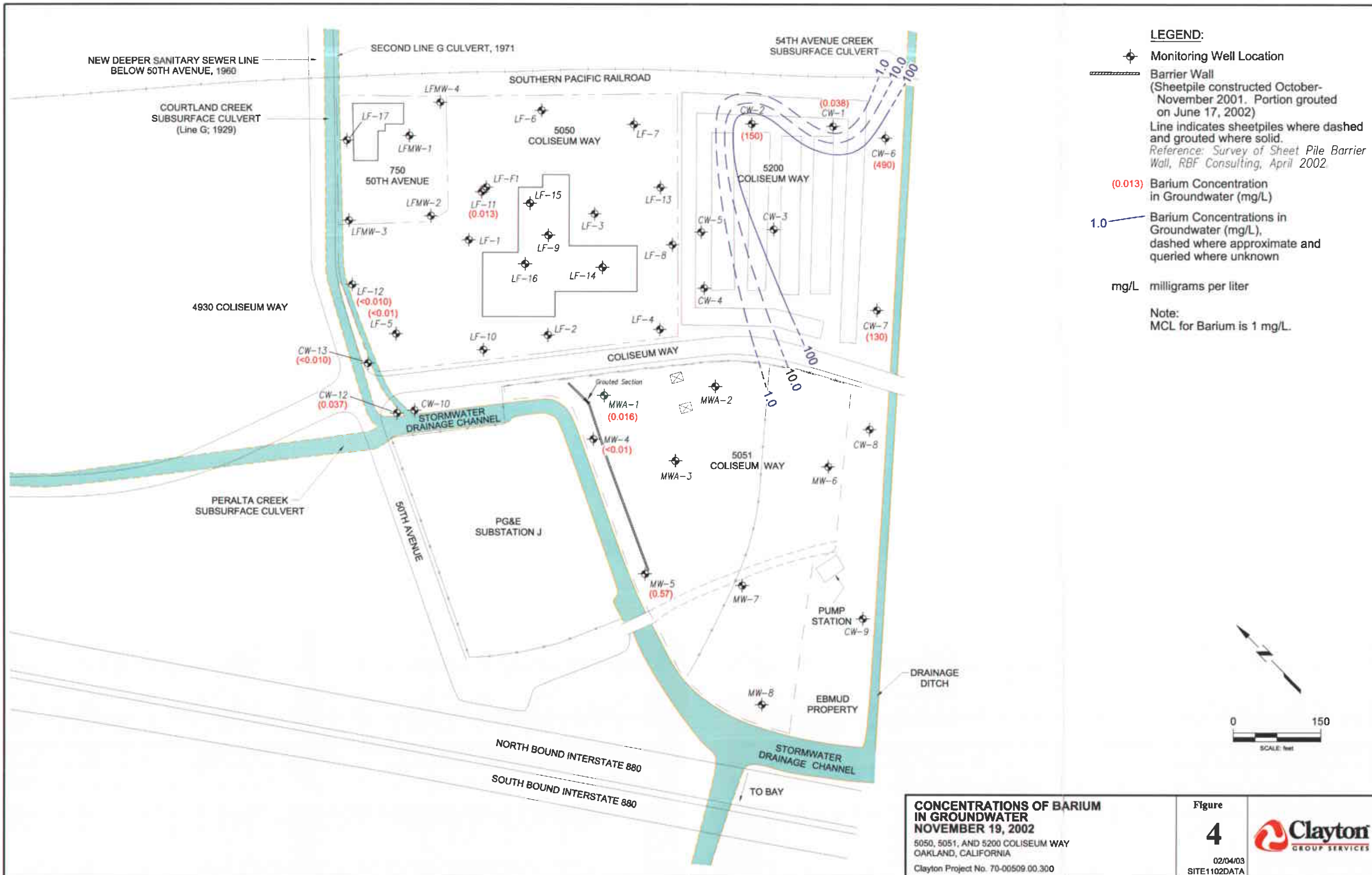




CONCENTRATIONS OF ARSENIC IN GROUNDWATER NOVEMBER 19, 2002
 5050, 5051, AND 5200 COLISEUM WAY
 OAKLAND, CALIFORNIA
 Clayton Project No. 70-00509.00.300

Figure **3**
 02/04/03
 SITE1102DATA

Clayton
 GROUP SERVICES



NEW DEEPER SANITARY SEWER LINE BELOW 50TH AVENUE, 1960

COURTLAND CREEK SUBSURFACE CULVERT (Line G; 1929)

SECOND LINE G CULVERT, 1971

54TH AVENUE CREEK SUBSURFACE CULVERT

SOUTHERN PACIFIC RAILROAD

5050 COLISEUM WAY

5200 COLISEUM WAY

4930 COLISEUM WAY

COLISEUM WAY

5051 COLISEUM WAY

PERALTA CREEK SUBSURFACE CULVERT

PG&E SUBSTATION J

PUMP STATION CW-9

EBMUD PROPERTY

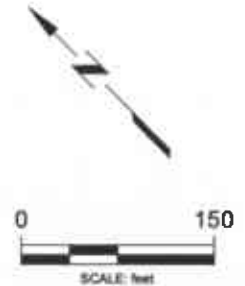
DRAINAGE DITCH

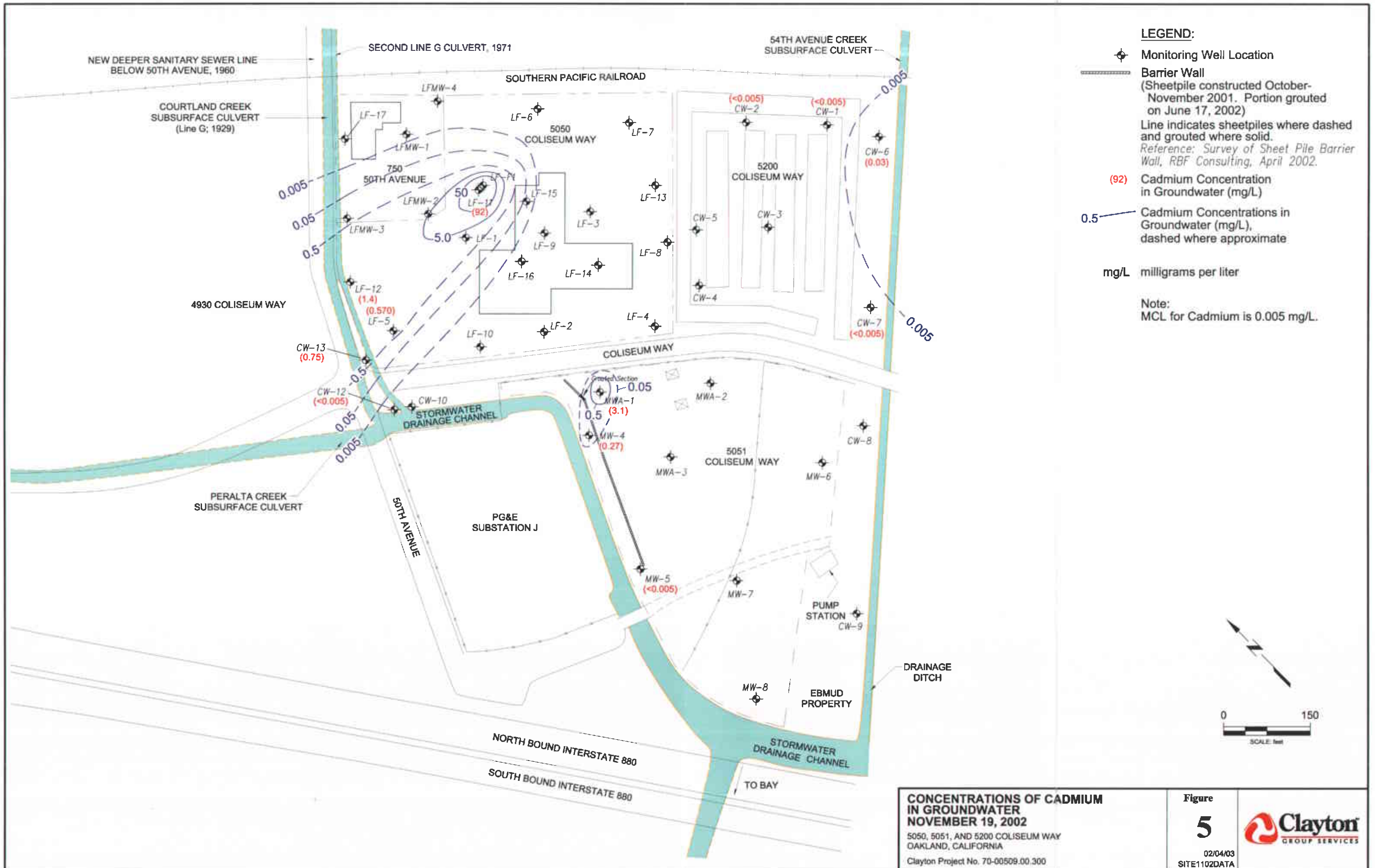
NORTH BOUND INTERSTATE 880

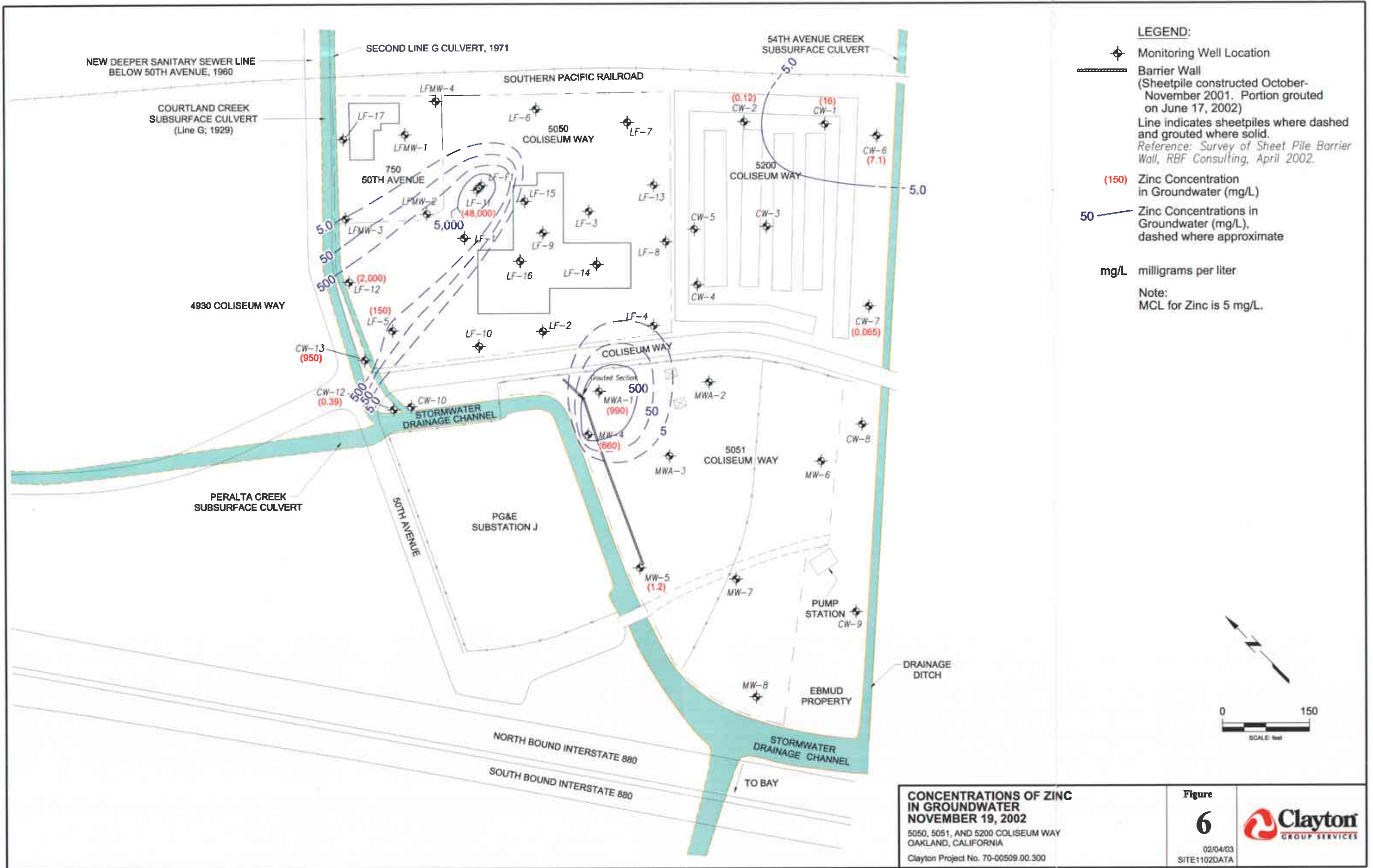
SOUTH BOUND INTERSTATE 880

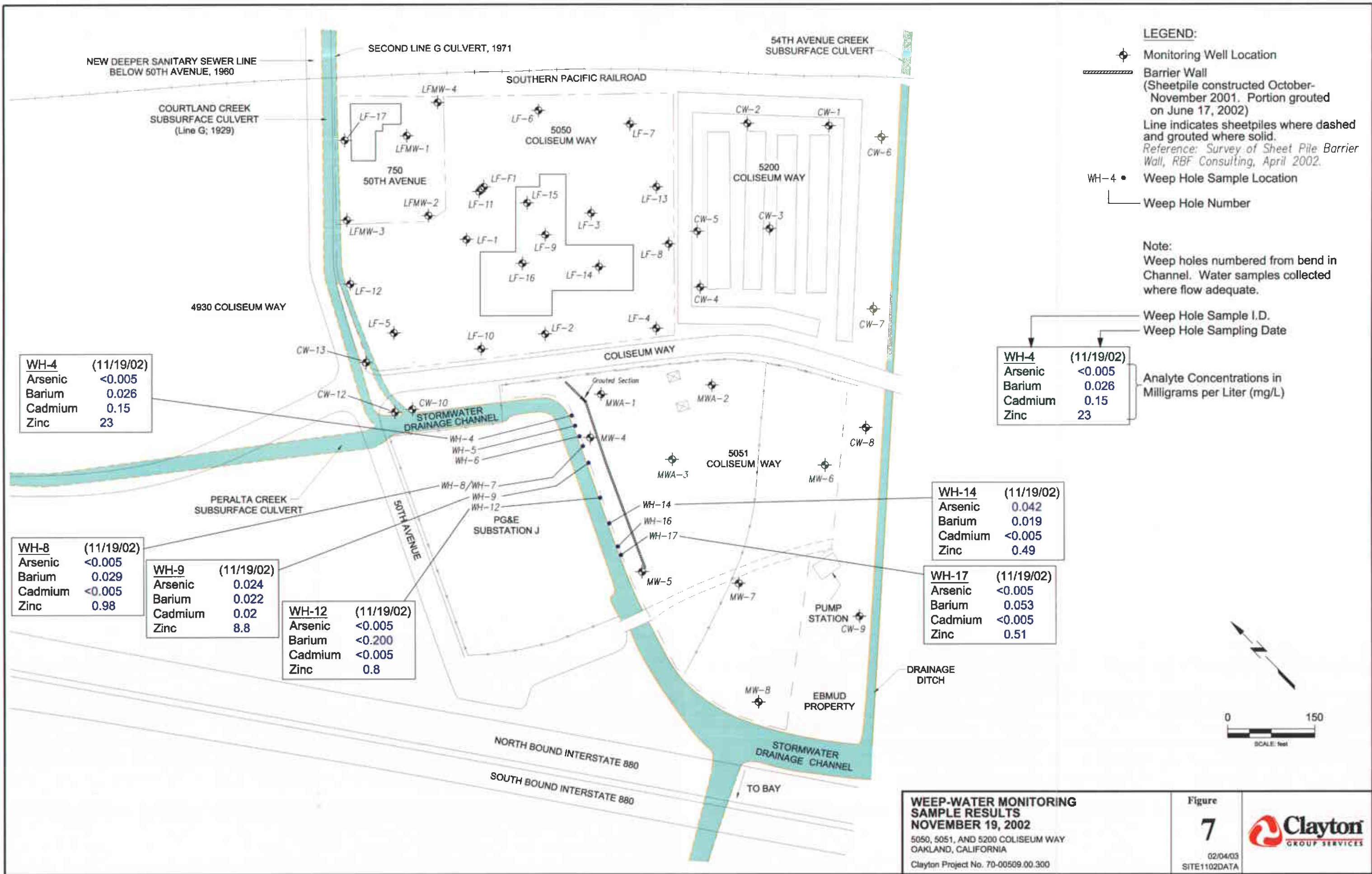
STORMWATER DRAINAGE CHANNEL

TO BAY









WEEP-WATER MONITORING SAMPLE RESULTS NOVEMBER 19, 2002
5050, 5051, AND 5200 COLISEUM WAY, OAKLAND, CALIFORNIA
Clayton Project No. 70-00509.00.300

Figure **7**
02/04/03
SITE1102DATA

