

ALAMEDA COUNTY
**HEALTH CARE SERVICES
AGENCY**

REBECCA GEBHART, Interim Director



DEPARTMENT OF ENVIRONMENTAL HEALTH
LOCAL OVERSIGHT PROGRAM (LOP)
For Hazardous Materials Releases
1131 HARBOR BAY PARKWAY, SUITE 250
ALAMEDA, CA 94502
(510) 567-6700
FAX (510) 337-9335

INVITATION TO COMMENT – POTENTIAL CASE CLOSURE

**WEST SECTOR, PORTION LOT 1, TRACT 8284 (343 M 20)
WEST SECTOR OF 1233 BOCKMAN ROAD, SAN LORENZO, CA 94580
SITE CLEANUP PROGRAM CASE RO0003217
GEOTRACKER GLOBAL ID T10000009292**

May 10, 2017

The above referenced site (see attached) is a Site Cleanup Program (SCP) case that is under the regulatory oversight of the Alameda County Department of Environmental Health (ACDEH) for the investigation and cleanup of petroleum hydrocarbons and volatile organic compounds (VOCs) associated with an automotive service and repair shop with two hydraulic hoists used at the site. Site investigation and cleanup activities have been completed and it does not appear that residual contamination presents a risk to human health and the environment. Therefore, ACDEH is considering closure of the case.

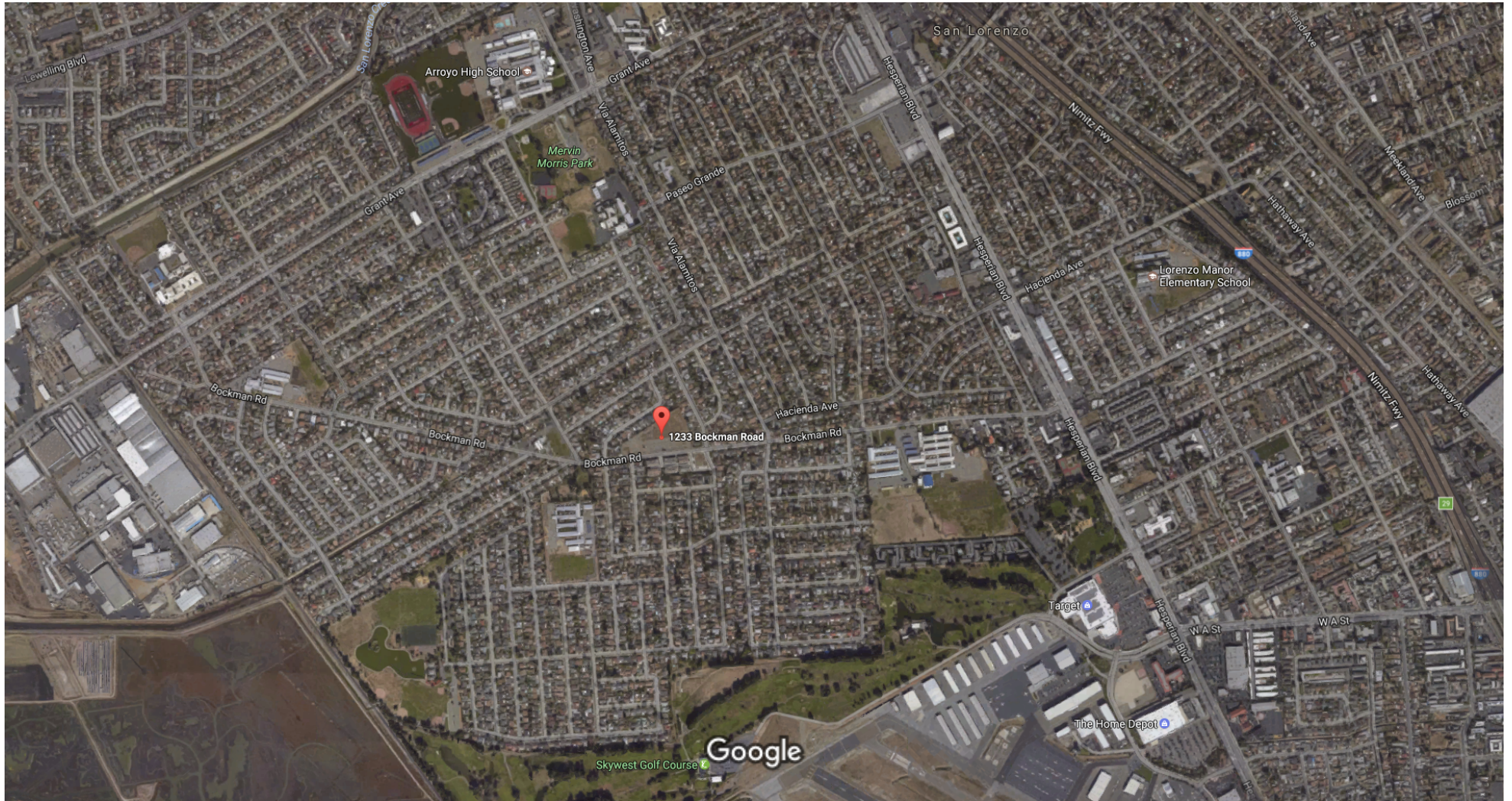
This notice is being sent to the current occupants and landowners of adjacent properties and known interested parties for this site. The public is invited to review and comment on the potential closure of the case. The entire case file can be viewed over the Internet on the ACDEH website (<http://www.acgov.org/aceh/lop/ust.htm>) or the State of California Water Resources Control Board GeoTracker website (<http://geotracker.waterboards.ca.gov>). Please send written comments to Kit Soo at ACDEH, 1131 Harbor Bay Parkway, Alameda, CA 94502; all comments will be forwarded to the responsible parties. Comments **received by June 9, 2017** will be considered and responded to prior to a final determination on the proposed case closure.

If you have comments or questions regarding this site, please contact the ACDEH caseworker, Kit Soo at 510-567-6791 or by email at kit.soo@acgov.org. Please refer to ACDEH case RO0003217 in any correspondence.



1233 Bockman Rd

West Sector of 1233 Bockman Road, San Lorenzo, CA



Imagery ©2017 Google, Map data ©2017 Google 500 ft