

Table 1
Summary of Analytical Results - Initial Performance Monitoring
Building 12
State Street Center
Fremont, California

Sample Location	Sample Identification	Sample Date	PCE ($\mu\text{g}/\text{m}^3$)	TCE ($\mu\text{g}/\text{m}^3$)	cis-1,2-DCE ($\mu\text{g}/\text{m}^3$)	trans-1,2-DCE ($\mu\text{g}/\text{m}^3$)	Vinyl Chloride ($\mu\text{g}/\text{m}^3$)	Freon 11 ($\mu\text{g}/\text{m}^3$)	Freon 12 ($\mu\text{g}/\text{m}^3$)
VR1	B12-VR1-050318	5/3/2018	4.82	<0.107	<0.0793	<0.0793	<0.0511	6.94	5.66
VR2	B12-VR2-050318	5/3/2018	34.8	<0.107	<0.0793	<0.0793	<0.0511	5.34	6.59
VR3	B12-VR3-050318	5/3/2018	271	<0.269	<0.198	<0.198	<0.128	7.85	27.5
VR4	B12-VR4-050318	5/3/2018	134	<0.107	<0.0793	<0.0793	<0.0511	4.21	16.6

Detections are shown in **bold**.

Abbreviations:

PCE = Tetrachlorethene

TCE = Trichlorethene

cis-1,2-DCE = cis-1,2-Dichloroethene

trans-1,2-DCE = trans-1,2-Dichloroethene

Freon 11 = Trichloroflouromethane

Freon 12 = Dichloroflouromethane

$\mu\text{g}/\text{m}^3$ = Micrograms per cubic meter

<0.107 = Not detected at or above the specified laboratory reporting limit.

Table 2
Summary of Analytical Results - Indoor Air
Building 12
State Street Center
Fremont, California

Sample Location	Sample Identification	Sample Date	PCE ($\mu\text{g}/\text{m}^3$)	TCE ($\mu\text{g}/\text{m}^3$)	cis-1,2-DCE ($\mu\text{g}/\text{m}^3$)	trans-1,2-DCE ($\mu\text{g}/\text{m}^3$)	Vinyl Chloride ($\mu\text{g}/\text{m}^3$)	Freon 11 ($\mu\text{g}/\text{m}^3$)	Freon 12 ($\mu\text{g}/\text{m}^3$)
Indoor Air	B12-IA-050318	5/3/2018	0.101	<0.107	<0.0793	<0.0793	<0.0511	1.15	2.63
Ambient Air	B12-AA-050318	5/3/2018	<0.0678	<0.0537	<0.0397	<0.0396	<0.0256	1.14	2.76
Residential Indoor Air ESLs¹			0.48	0.48	0.83	8.3	0.0095	--	--

Detections are shown in **bold**.

Abbreviations:

PCE = Tetrachlorethene

TCE = Trichlorethene

cis-1,2-DCE = cis-1,2-Dichloroethene

trans-1,2-DCE = trans-1,2-Dichloroethene

Freon 11 = Trichloroflouromethane

Freon 12 = Dichloroflouromethane

$\mu\text{g}/\text{m}^3$ = Micrograms per cubic meter

<0.107 = Not detected at or above the specified laboratory reporting limit.

1. Residential Indoor Air ESL = February 2016 (Rev.3) Regional Water Quality Control Board, San Francisco Bay Region (SFRWQCB) Environmental Screening Levels (ESLs).

Table 2
Summary of Analytical Results - Indoor Air
Building 12
State Street Center
Fremont, California

Sample Location	Sample Identification	Sample Date	PCE ($\mu\text{g}/\text{m}^3$)	TCE ($\mu\text{g}/\text{m}^3$)	cis-1,2-DCE ($\mu\text{g}/\text{m}^3$)	trans-1,2-DCE ($\mu\text{g}/\text{m}^3$)	Vinyl Chloride ($\mu\text{g}/\text{m}^3$)	Freon 11 ($\mu\text{g}/\text{m}^3$)	Freon 12 ($\mu\text{g}/\text{m}^3$)
Indoor Air	B12-IA-050318	5/3/2018	0.101	<0.107	<0.0793	<0.0793	<0.0511	1.15	2.63
Ambient Air	B12-AA-050318	5/3/2018	<0.0678	<0.0537	<0.0397	<0.0396	<0.0256	1.14	2.76
Residential Indoor Air ESLs¹			0.48	0.48	0.83	8.3	0.0095	--	--

Detections are shown in **bold**.

Abbreviations:

PCE = Tetrachlorethene

TCE = Trichlorethene

cis-1,2-DCE = cis-1,2-Dichloroethene

trans-1,2-DCE = trans-1,2-Dichloroethene

Freon 11 = Trichloroflouromethane

Freon 12 = Dichloroflouromethane

$\mu\text{g}/\text{m}^3$ = Micrograms per cubic meter

<0.107 = Not detected at or above the specified laboratory reporting limit.

1. Residential Indoor Air ESL = February 2016 (Rev.3) Regional Water Quality Control Board, San Francisco Bay Region (SFRWQCB) Environmental Screening Levels (ESLs).

VR4	
PCE	134
TCE	<0.107
cis-1,2-DCE	<0.0793
trans-1,2-DCE	<0.0793
Vinyl Chloride	<0.0511
Freon 11	4.21
Freon 12	16.6

Ambient Air	
PCE	<0.0678
TCE	<0.0537
cis-1,2-DCE	<0.0397
trans-1,2-DCE	<0.0396
Vinyl Chloride	<0.0256
Freon 11	1.14
Freon 12	2.76

VR3	
PCE	271
TCE	<0.269
cis-1,2-DCE	<0.198
trans-1,2-DCE	<0.198
Vinyl Chloride	<0.128
Freon 11	7.85
Freon 12	27.5

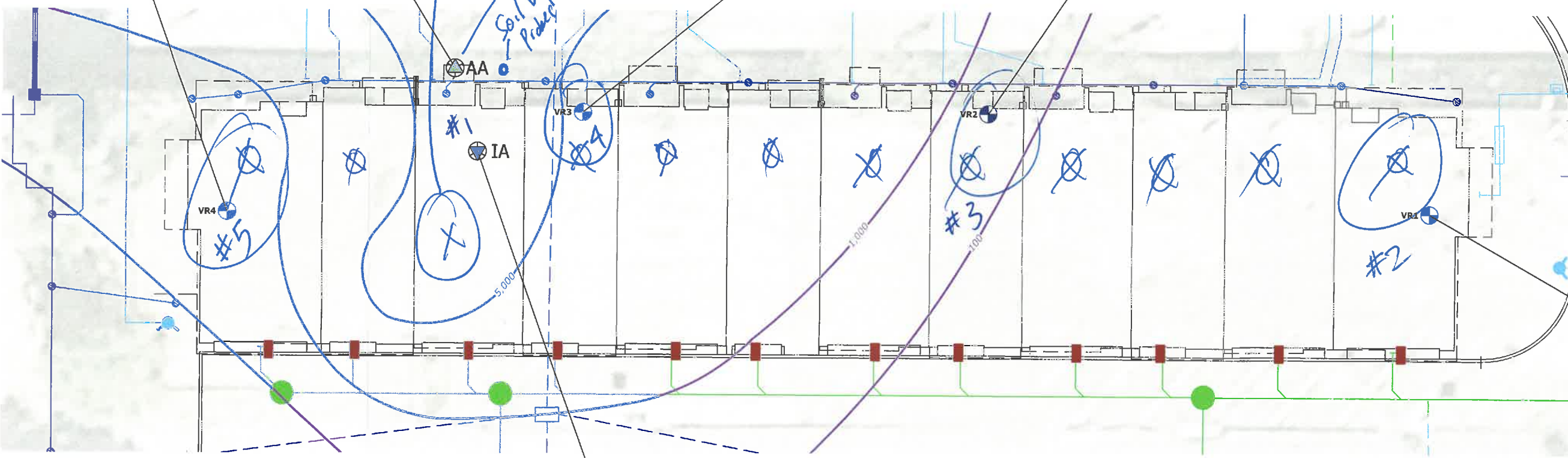
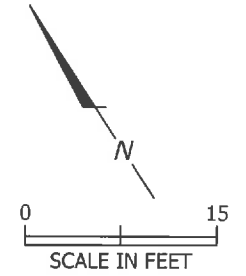
VR2	
PCE	34.8
TCE	<0.107
cis-1,2-DCE	<0.0793
trans-1,2-DCE	<0.0793
Vinyl Chloride	<0.0511
Freon 11	5.34
Freon 12	6.59

VR1	
PCE	4.82
TCE	<0.107
cis-1,2-DCE	<0.0793
trans-1,2-DCE	<0.0793
Vinyl Chloride	<0.0511
Freon 11	6.94
Freon 12	5.66

Indoor Air (Unit 67)	
PCE	0.101
TCE	<0.107
cis-1,2-DCE	<0.0793
trans-1,2-DCE	<0.0793
Vinyl Chloride	<0.0511
Freon 11	1.15
Freon 12	2.63

- Explanation**
- VR1 Vent Riser Location on Roof
 - IA Indoor Air Sample Location on first floor
 - AA Ambient Air Sample Location on second floor balcony
 - SS Sanitary Sewer Line
 - Storm Drain Line
 - Water Line
 - Trench Dam
 - Prior Shallow Soil Data PCE Isoconcentration contour in $\mu\text{g}/\text{m}^3$

Notes:
 All units expressed in micrograms per cubic meter of air ($\mu\text{g}/\text{m}^3$)
 Detections are shown in **bold**
 <0.107 = Not detected at or above the specified laboratory reporting limit.
 PCE = Tetrachlorethene
 TCE = Trichlorethene
 cis-1,2-DCE = cis-1,2-Dichloroethene
 trans-1,2-DCE = trans-1,2-Dichloroethene
 Freon 11 = Trichlorofluoromethane
 Freon 12 = Dichlorofluoromethane



SEWER?

Influence from off-gassing from building materials

MAY 3