

Detterman, Mark, Env. Health

From: Carl J. Michelsen [CMichelsen@pesenv.com]
Sent: Monday, July 27, 2015 3:55 PM
To: Detterman, Mark, Env. Health
Cc: Dave Hopkins; Tom Graf; Selim Zeyrek; Justin J. Patterson; Cunningham, Denise; Kamangar, Katia
Subject: RE: Workplan for additional characterization, 39155 & 29183 State Street, Fremont (RO3176)
Attachments: State Street Boring logs.pdf

Mark – as we discussed this afternoon, attached are the boring logs for the State Street site. Let me know if you have any questions on the logs or the workplan.

Thanks,
Carl Michelsen
415.899.1600

From: Detterman, Mark, Env. Health [<mailto:Mark.Detterman@acgov.org>]
Sent: Thursday, July 23, 2015 9:46 AM
To: Carl J. Michelsen
Cc: Dave Hopkins; Tom Graf; Selim Zeyrek; Justin J. Patterson
Subject: RE: Workplan for additional characterization, 39155 & 29183 State Street, Fremont (RO3176)

That would work. ACEH will consider it a draft, and informally respond prior to a formalized directive letter which would be your approval to proceed, with any modifications thought needed.

Mark Detterman
Senior Hazardous Materials Specialist, PG, CEG
Alameda County Environmental Health
1131 Harbor Bay Parkway
Alameda, CA 94502
Direct: 510.567.6876
Fax: 510.337.9335
Email: mark.detterman@acgov.org

PDF copies of case files can be downloaded at:

<http://www.acgov.org/aceh/lop/ust.htm>

From: Carl J. Michelsen [<mailto:CMichelsen@pesenv.com>]
Sent: Thursday, July 23, 2015 9:17 AM
To: Detterman, Mark, Env. Health
Cc: Dave Hopkins; Tom Graf; Selim Zeyrek; Justin J. Patterson
Subject: RE: Workplan for additional characterization, 39155 & 29183 State Street, Fremont (RO3176)

Thanks Mark.

In lieu of resubmitting the current workplan with the perjury statement and the professional stamp and uploading it right now, I'd like to receive and address any comments that you or Selim may have on the workplan and then revise it as needed and resubmit it with the statement & stamp. Is that acceptable to you?

Regards,

Carl

From: Detterman, Mark, Env. Health [<mailto:Mark.Detterman@acgov.org>]
Sent: Wednesday, July 22, 2015 5:42 PM
To: Carl J. Michelsen
Cc: Dave Hopkins; Tom Graf; Selim Zeyrek; Justin J. Patterson
Subject: RE: Workplan for additional characterization, 39155 & 29183 State Street, Fremont (RO3176)

Thanks Carl.

You weren't at the meeting (and I was just getting involved after a long series of communications by Jerry Wickham here at ACEH and "others", so don't have the full story), but the reason ACEH got involved was the request by ACWD for oversight of vapor issues at the site (I believe the request was subsequently referred to ACEH by the RWQCB). This is a first, and we're still trying to figure out the procedures somewhat. As the oversight agency for the vapor investigation, you will also need to submit a copy to the ACEH ftp site with a perjury statement and professional stamp - see attached (and FYI - the difference between past work plans and reports is that they were not first submitted to ACEH. We won't go backward; however, future documents, including this one, require the statement and stamp). For boring permits, as you indicate, it will remain ACWD. However, if ACEH modifies the number, you may need to resubmit to ACWD (Don't know)? We'll figure that out as we go, and Selim will be copied on at a minimum of all official directive communications, if not more. The work plan also will need to be uploaded to Geotracker (RO0003176). This may require the site to be claimed in Geotracker by Regis Homes or whoever will be the "RP". That used to be a one page form that could be faxed to Geotracker, but maybe they've updated that process now?

If you have questions, let me know.
Thanks,

Mark Detterman
Senior Hazardous Materials Specialist, PG, CEG
Alameda County Environmental Health
1131 Harbor Bay Parkway
Alameda, CA 94502
Direct: 510.567.6876
Fax: 510.337.9335
Email: mark.detterman@acgov.org

PDF copies of case files can be downloaded at:

<http://www.acgov.org/aceh/lop/ust.htm>

From: Carl J. Michelsen [<mailto:CMichelsen@pesenv.com>]
Sent: Wednesday, July 22, 2015 5:16 PM
To: Detterman, Mark, Env. Health
Cc: Dave Hopkins; Tom Graf; Selim Zeyrek; Justin J. Patterson
Subject: Workplan for additional characterization, 39155 & 29183 State Street, Fremont (RO3176)

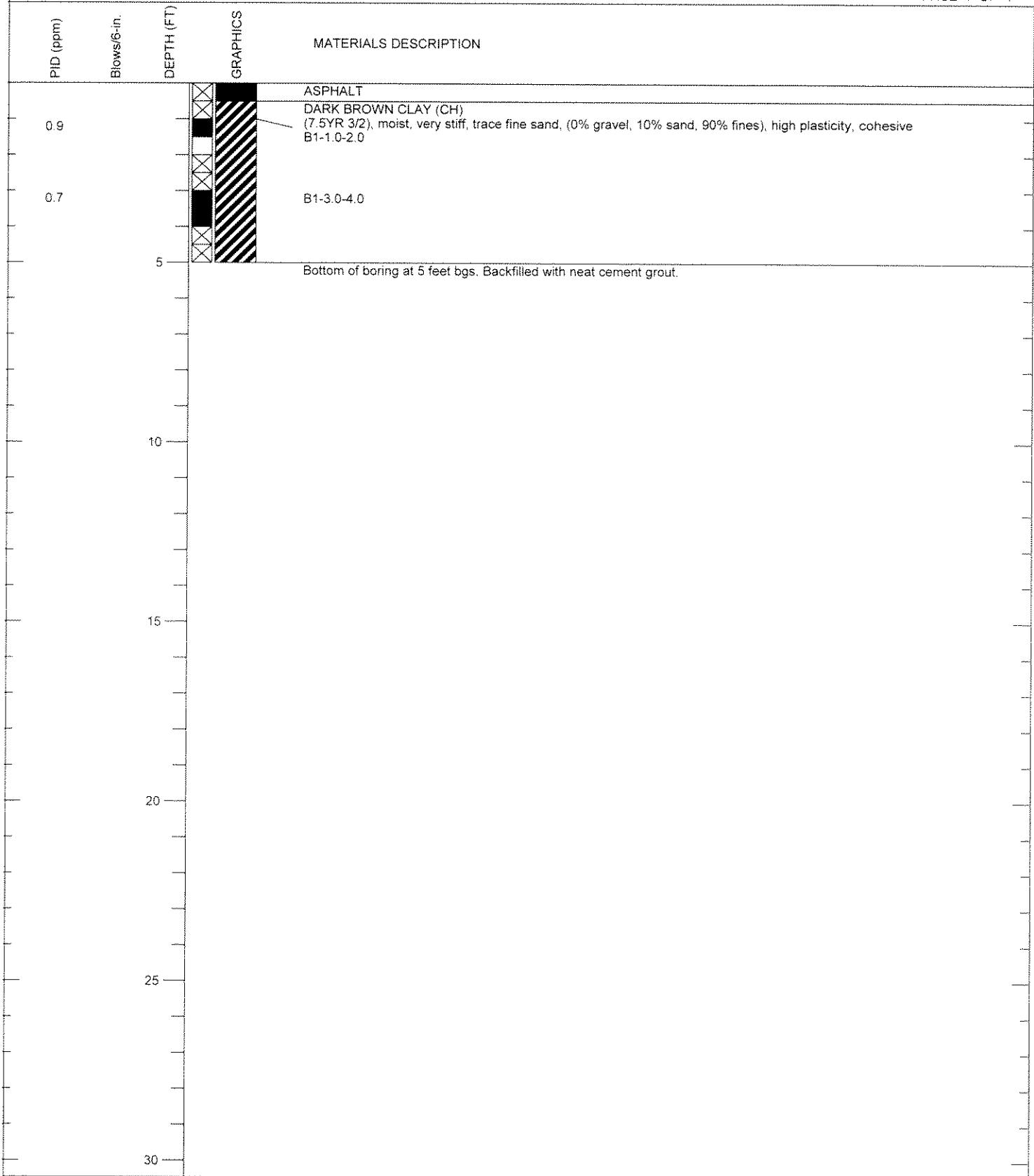
Mark – attached is a workplan that we have submitted to the ACWD in preparation for obtaining drilling permits. The objective of this proposed work is to further evaluate the occurrence of benzene in soil vapor on the south side of the site and to address ACWD's request for further soil and soil vapor characterization, including collection of oxygen measurements.

Regards,
Carl

Carl J. Michelsen, P.G., C.HG.
Principal Geochemist

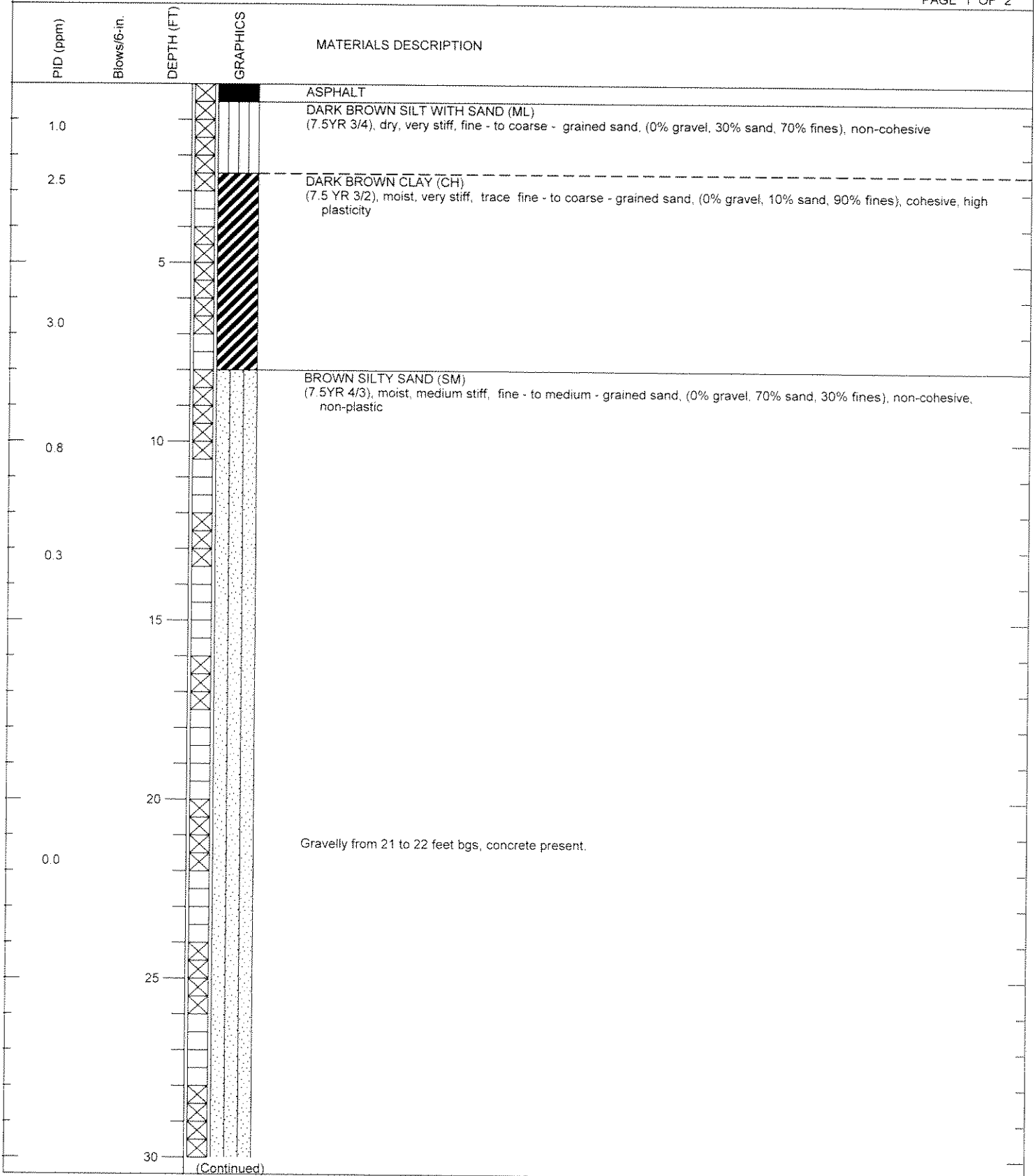


1682 Novato Blvd., Suite 100
Novato, CA 94947
Ph: (415) 899-1600
Fax: (415) 899-1601
cmichelsen@pesenv.com



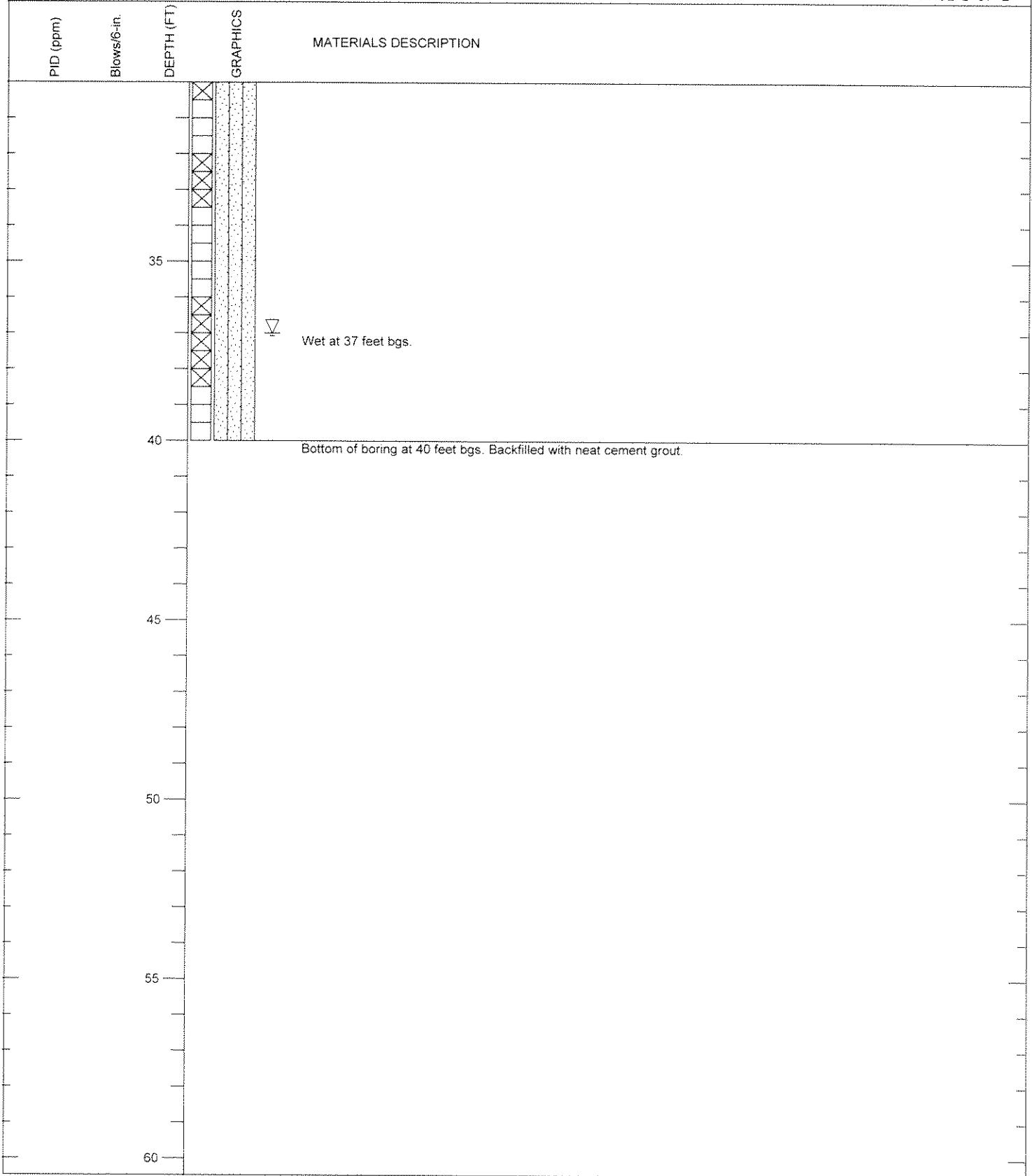
PROJECT	Regis Homes Bay Area, LLC	REVIEWED BY	GDT
LOCATION	39155 & 38183 State Street, Fremont, California	DIAMETER OF HOLE	7 inches
JOB NUMBER	1098.007.01.001	TOTAL DEPTH OF HOLE	5 feet
LOGGED BY	G. Creps	DATE STARTED	10/27/14
DRILL RIG	Direct push	DATE COMPLETED	10/27/14

PLATE
1



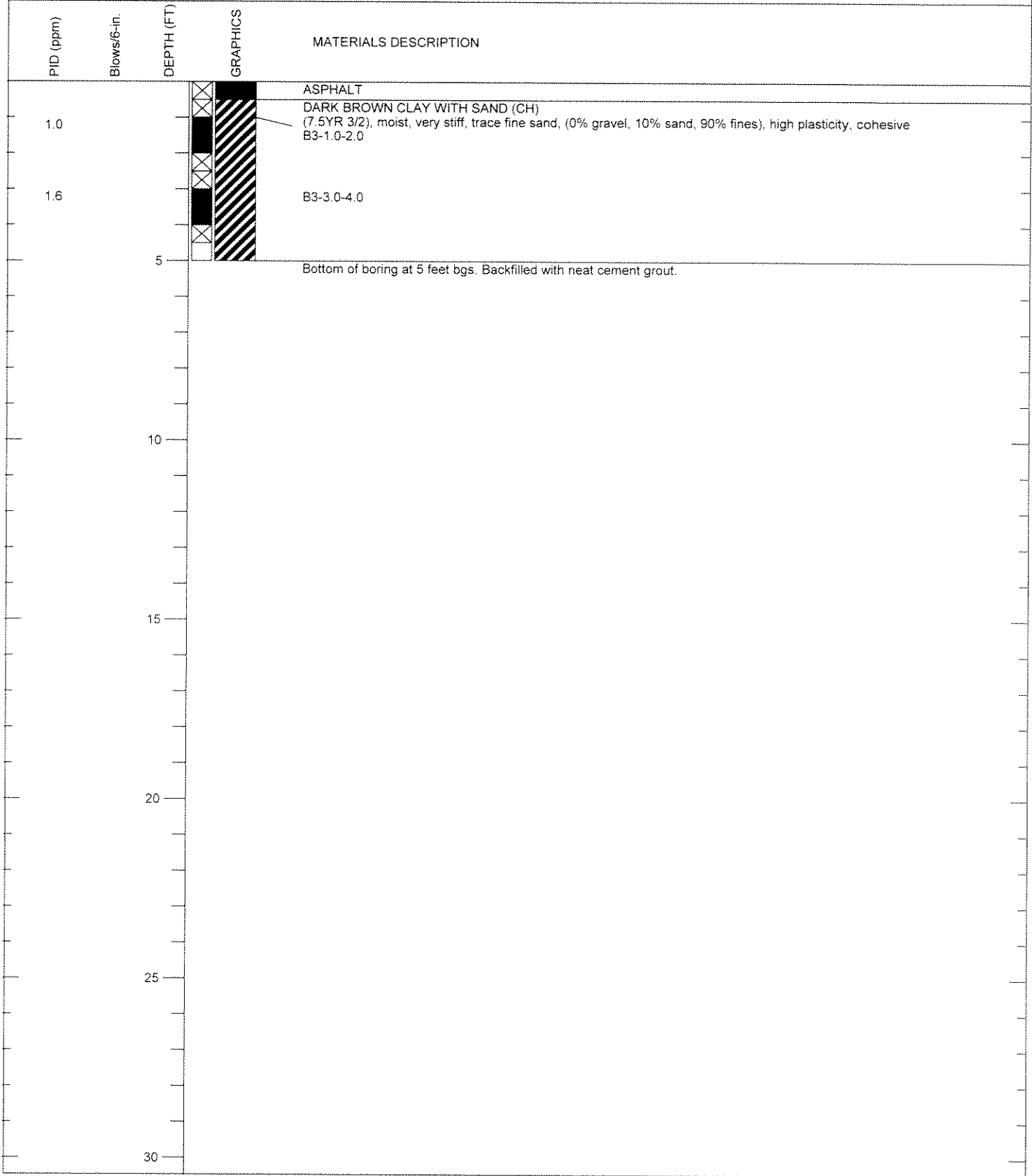
PROJECT	Regis Homes Bay Area, LLC	REVIEWED BY	GDT
LOCATION	39155 & 38183 State Street, Fremont, California	DIAMETER OF HOLE	7 inches
JOB NUMBER	1098.007.01.001	TOTAL DEPTH OF HOLE	40 feet
LOGGED BY	G Creps	DATE STARTED	10/27/14
DRILL RIG	Direct push	DATE COMPLETED	10/27/14

PLATE
2



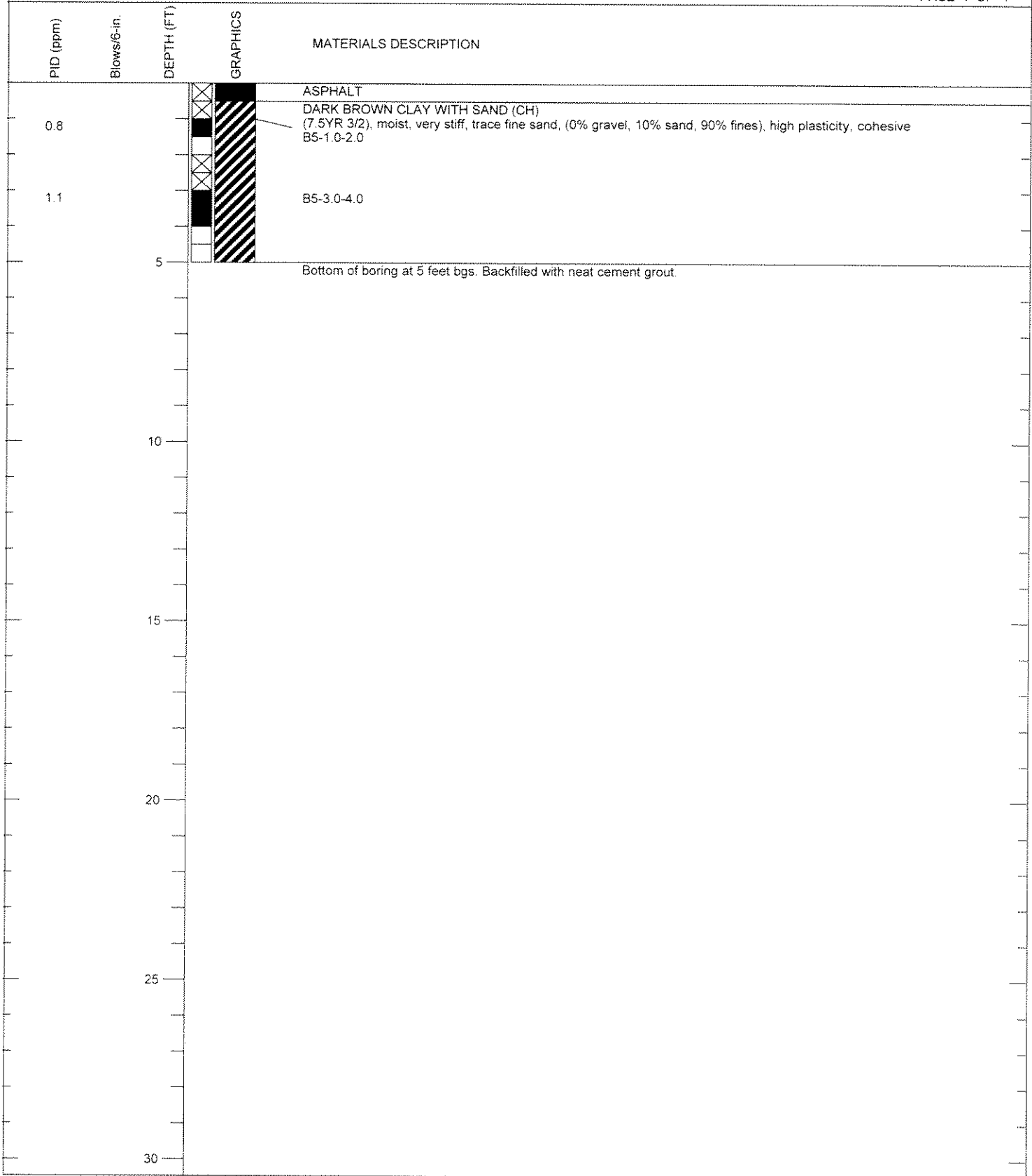
PROJECT	Regis Homes Bay Area, LLC	REVIEWED BY	GDT
LOCATION	39155 & 38183 State Street, Fremont, California	DIAMETER OF HOLE	7 inches
JOB NUMBER	1098.007.01.001	TOTAL DEPTH OF HOLE	40 feet
LOGGED BY	G. Creps	DATE STARTED	10/27/14
DRILL RIG	Direct push	DATE COMPLETED	10/27/14

PLATE
2



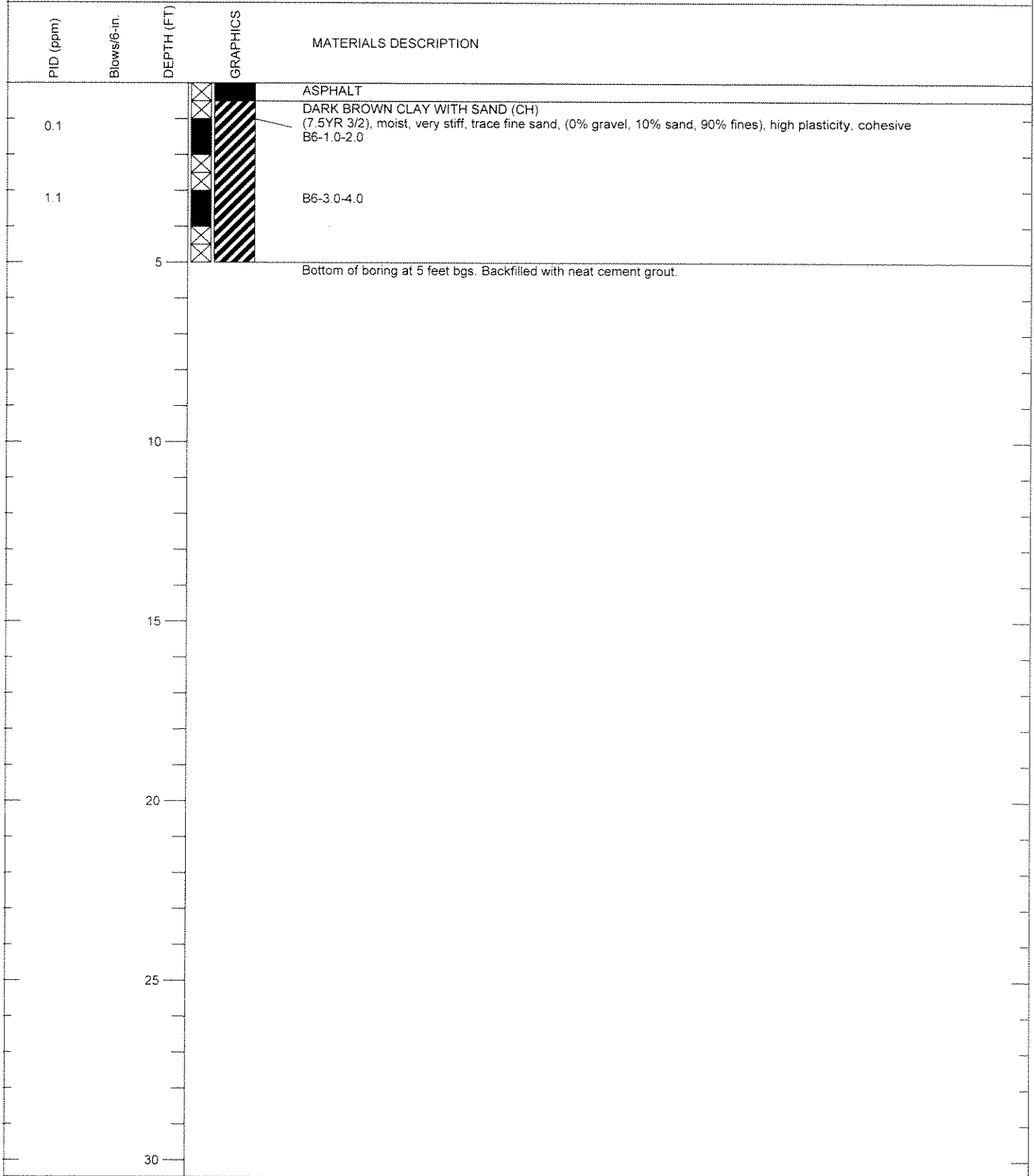
PROJECT	Regis Homes Bay Area, LLC	REVIEWED BY	GDT
LOCATION	39155 & 38183 State Street, Fremont, California	DIAMETER OF HOLE	7 inches
JOB NUMBER	1098.007.01.001	TOTAL DEPTH OF HOLE	5 feet
LOGGED BY	G. Creps	DATE STARTED	10/27/14
DRILL RIG	Direct push	DATE COMPLETED	10/27/14

PLATE
3



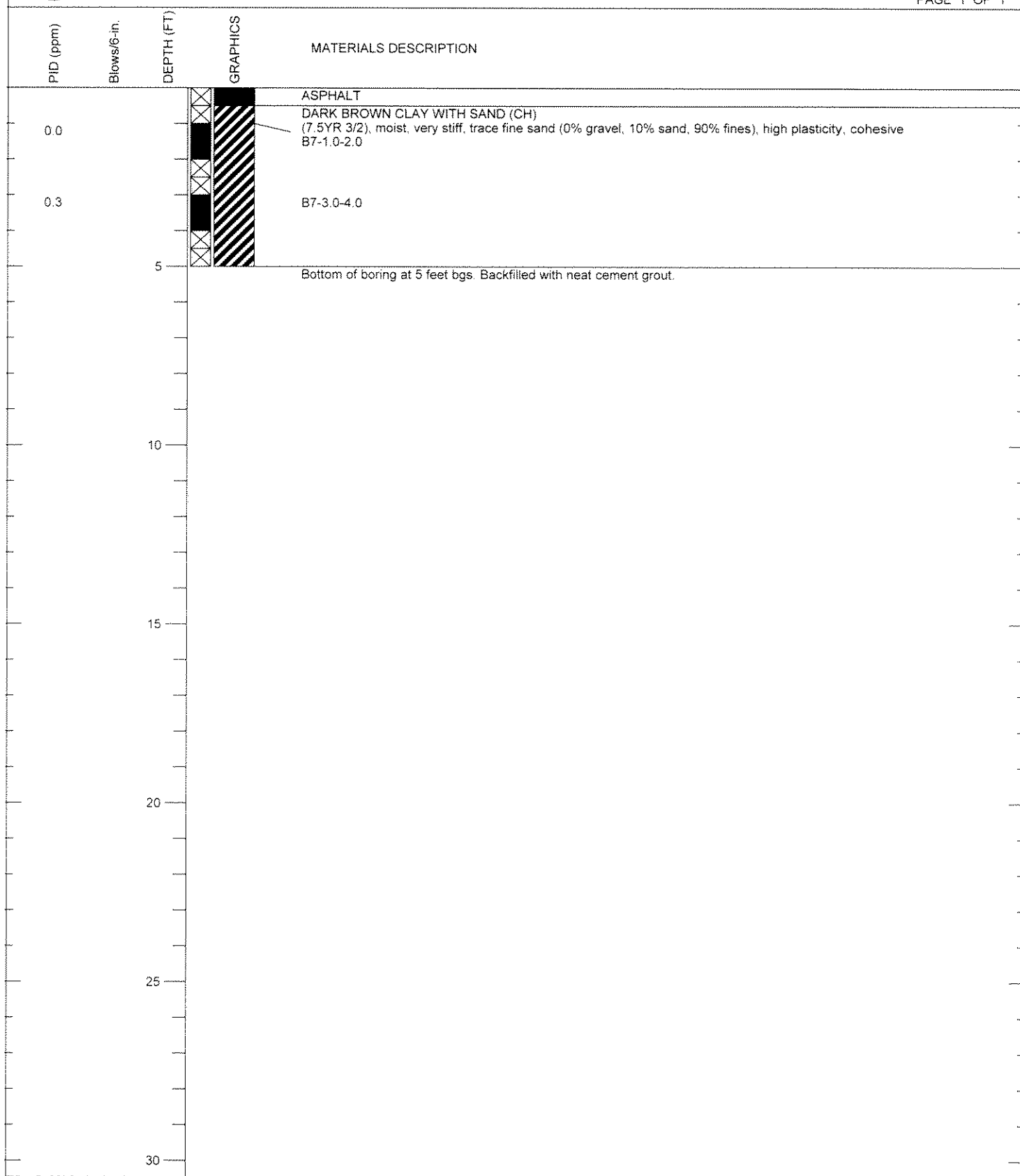
PROJECT	Regis Homes Bay Area, LLC	REVIEWED BY	GDT
LOCATION	39155 & 38183 State Street, Fremont, California	DIAMETER OF HOLE	7 inches
JOB NUMBER	1098.007.01.001	TOTAL DEPTH OF HOLE	5 feet
LOGGED BY	G. Creps	DATE STARTED	10/27/14
DRILL RIG	Direct push	DATE COMPLETED	10/27/14

PLATE
4



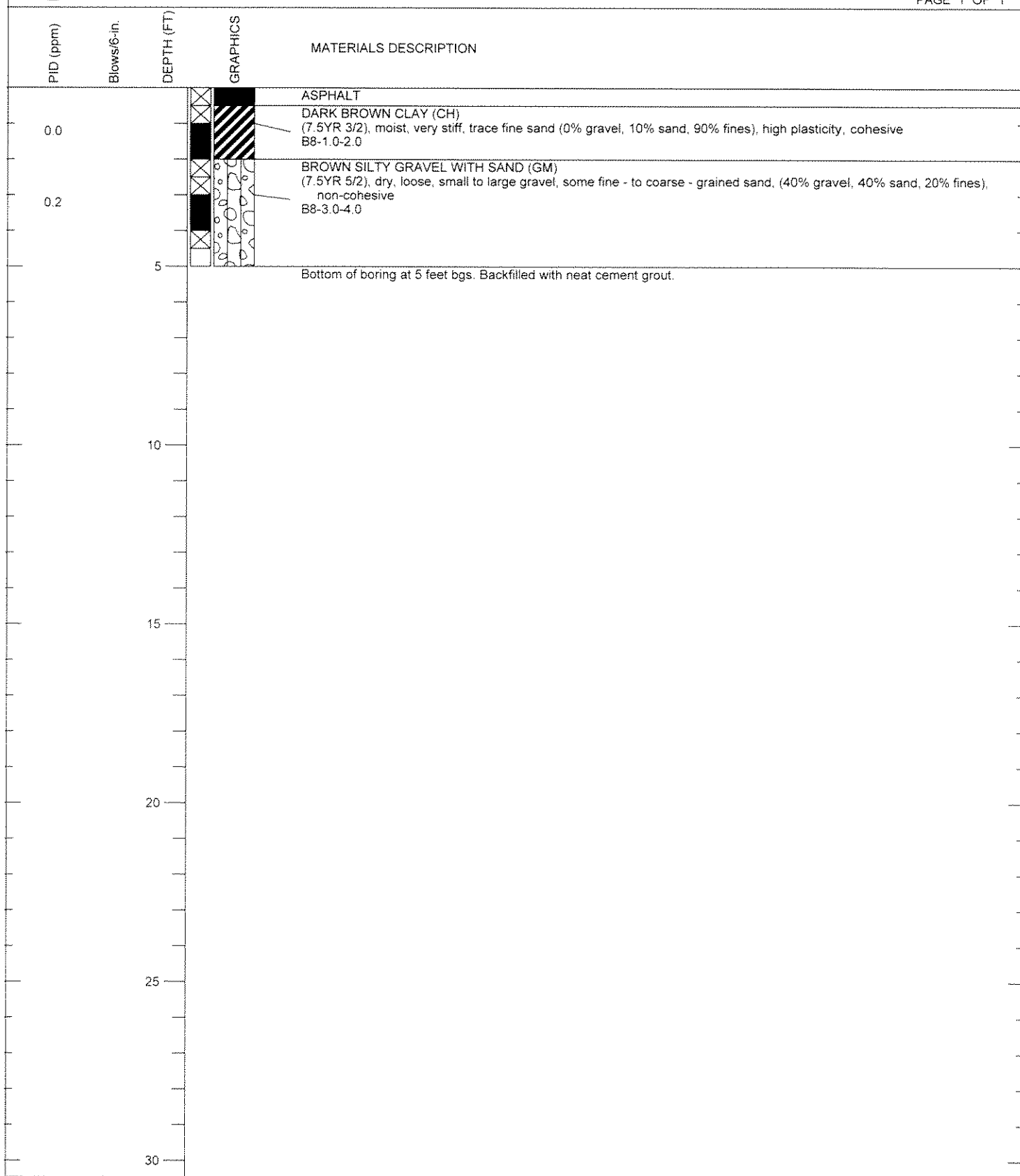
PROJECT	Regis Homes Bay Area, LLC	REVIEWED BY	GDT
LOCATION	39155 & 38183 State Street, Fremont, California	DIAMETER OF HOLE	7 inches
JOB NUMBER	1098.007.01.001	TOTAL DEPTH OF HOLE	5 feet
LOGGED BY	G. Creps	DATE STARTED	10/27/14
DRILL RIG	Direct push	DATE COMPLETED	10/27/14

PLATE
5



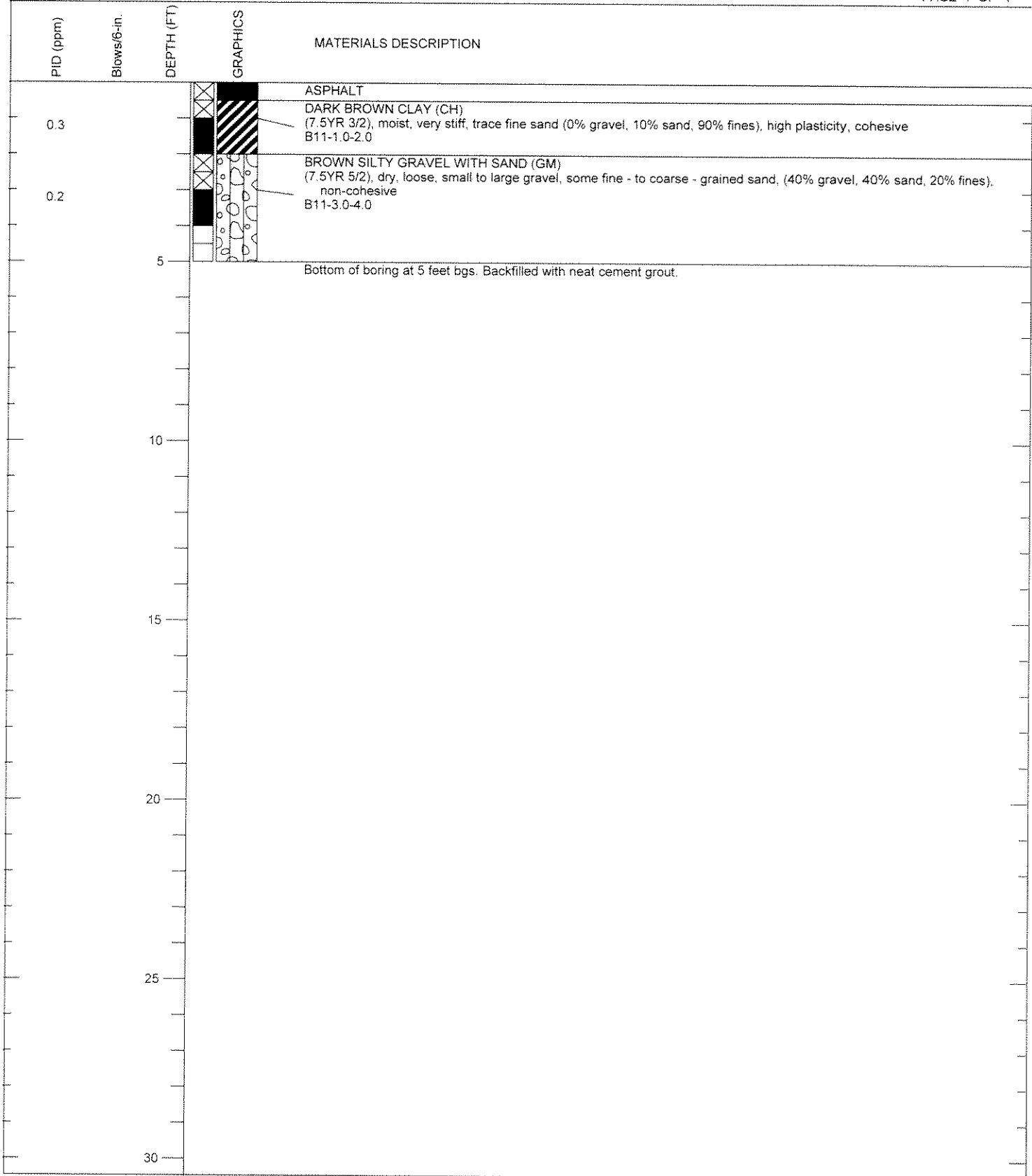
PROJECT	Regis Homes Bay Area, LLC	REVIEWED BY	GDT
LOCATION	39155 & 38183 State Street, Fremont, California	DIAMETER OF HOLE	7 inches
JOB NUMBER	1098.007.01.001	TOTAL DEPTH OF HOLE	5 feet
LOGGED BY	G. Creps	DATE STARTED	10/27/14
DRILL RIG	Direct push	DATE COMPLETED	10/27/14

PLATE
6



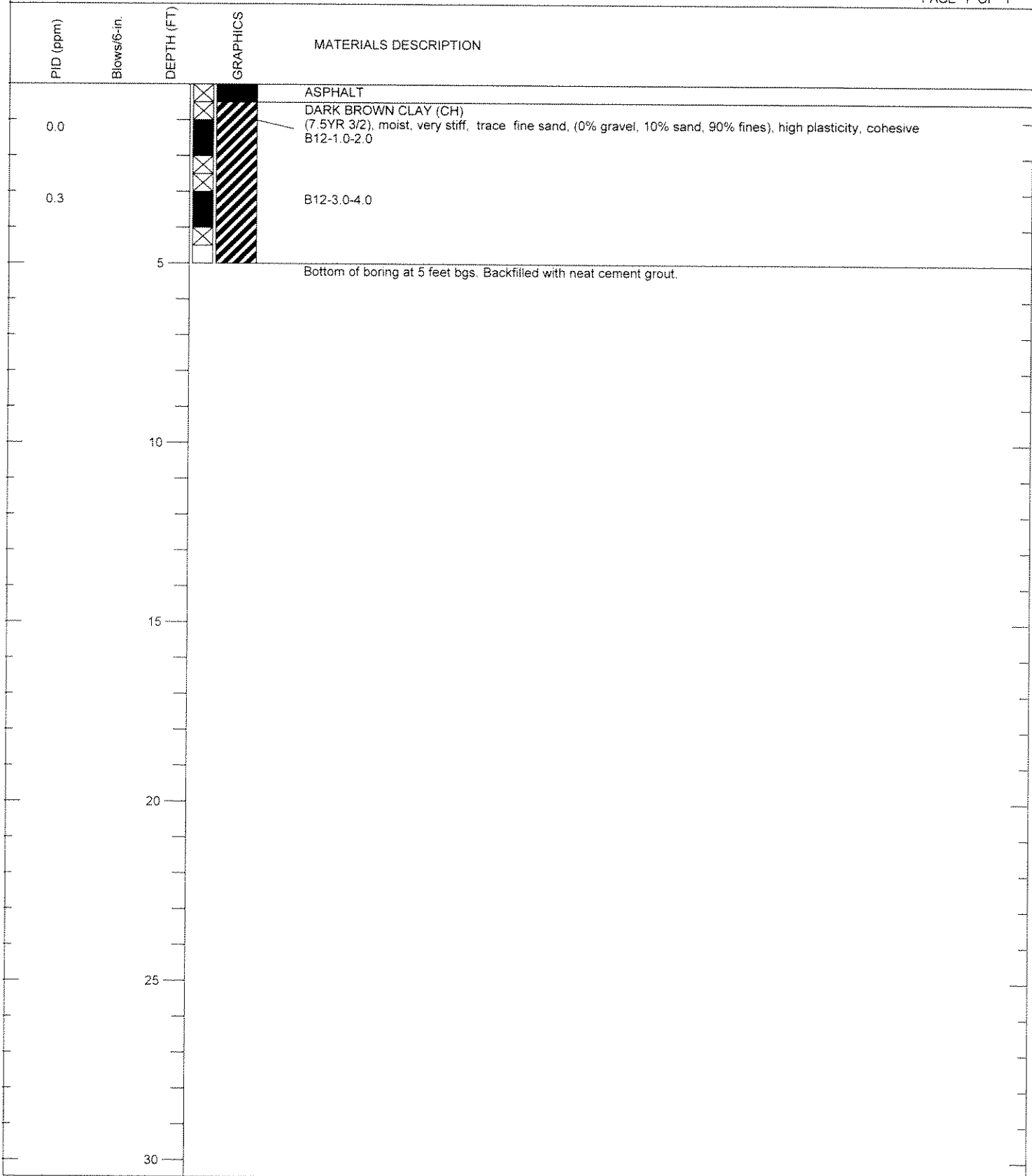
PROJECT	Regis Homes Bay Area, LLC	REVIEWED BY	GDT
LOCATION	39155 & 38183 State Street, Fremont, California	DIAMETER OF HOLE	7 inches
JOB NUMBER	1098.007.01.001	TOTAL DEPTH OF HOLE	5 feet
LOGGED BY	G. Creps	DATE STARTED	10/27/14
DRILL RIG	Direct push	DATE COMPLETED	10/27/14

PLATE
7



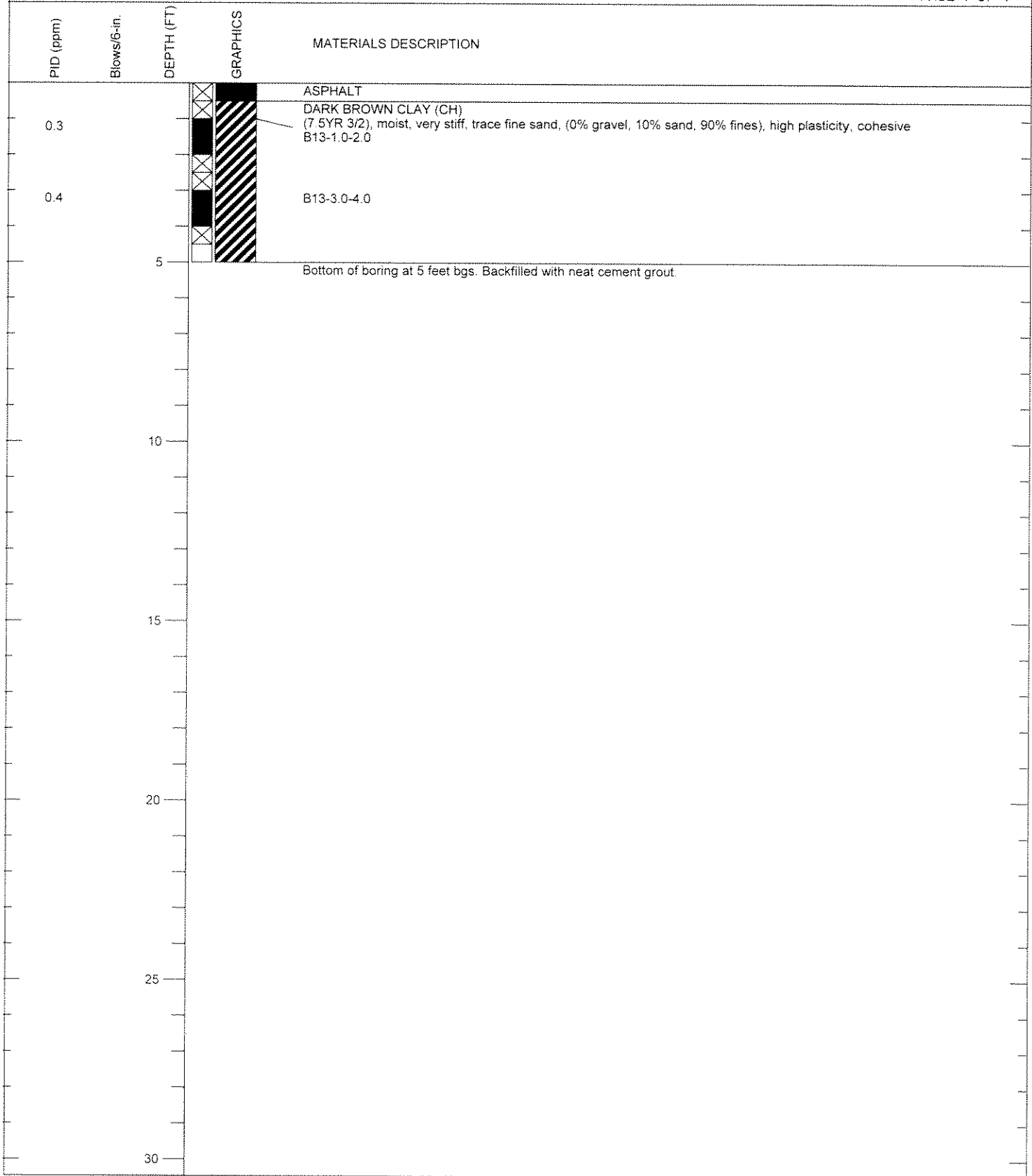
PROJECT	Regis Homes Bay Area, LLC	REVIEWED BY	GDT
LOCATION	39155 & 38183 State Street, Fremont, California	DIAMETER OF HOLE	7 inches
JOB NUMBER	1098.007.01.001	TOTAL DEPTH OF HOLE	5 feet
LOGGED BY	G Creps	DATE STARTED	10/27/14
DRILL RIG	Direct push	DATE COMPLETED	10/27/14

PLATE
8



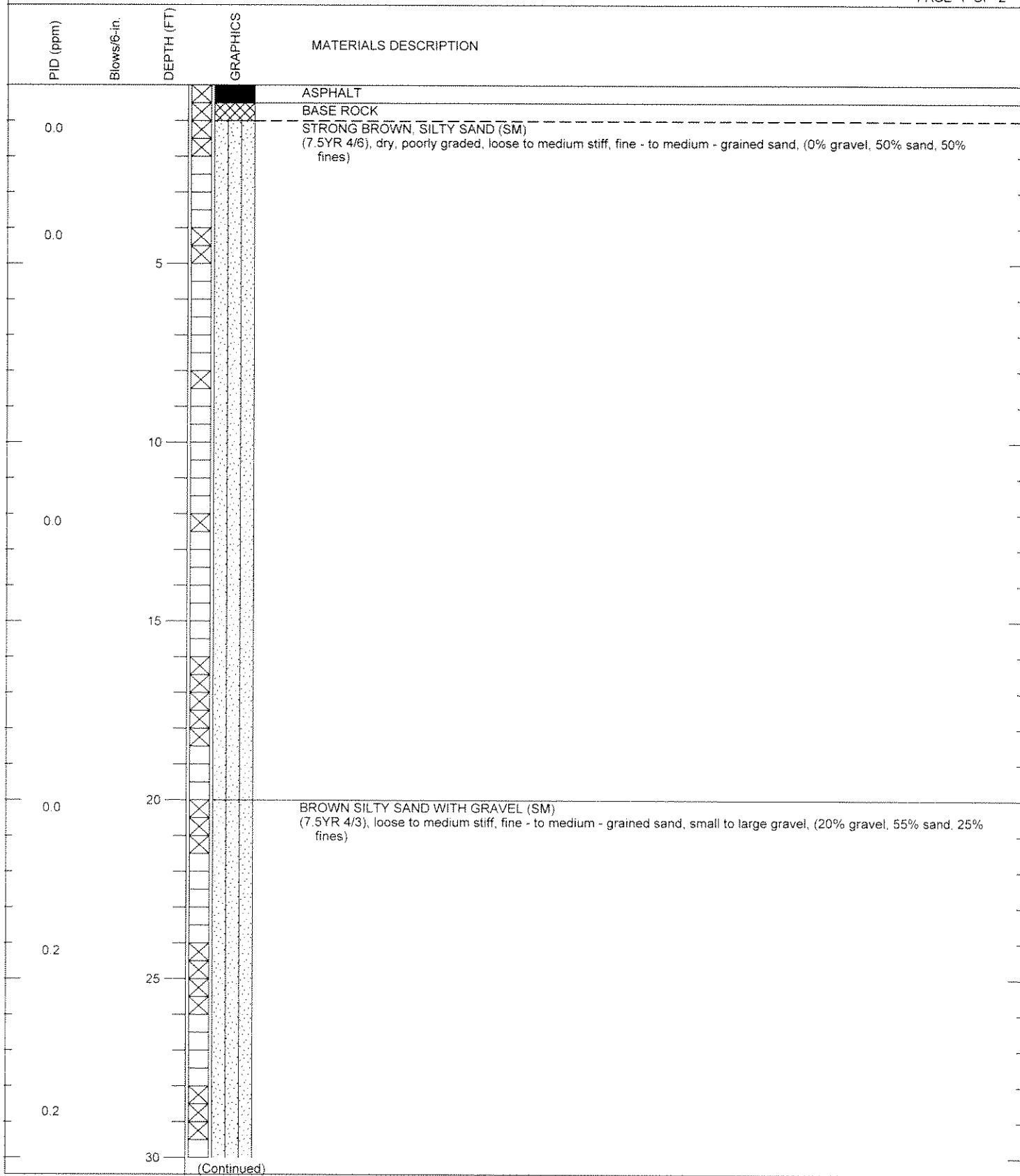
PROJECT	Regis Homes Bay Area, LLC	REVIEWED BY	GDT
LOCATION	39155 & 38183 State Street, Fremont, California	DIAMETER OF HOLE	7 inches
JOB NUMBER	1098.007.01.001	TOTAL DEPTH OF HOLE	5 feet
LOGGED BY	G. Creps	DATE STARTED	10/27/14
DRILL RIG	Direct push	DATE COMPLETED	10/27/14

PLATE
9



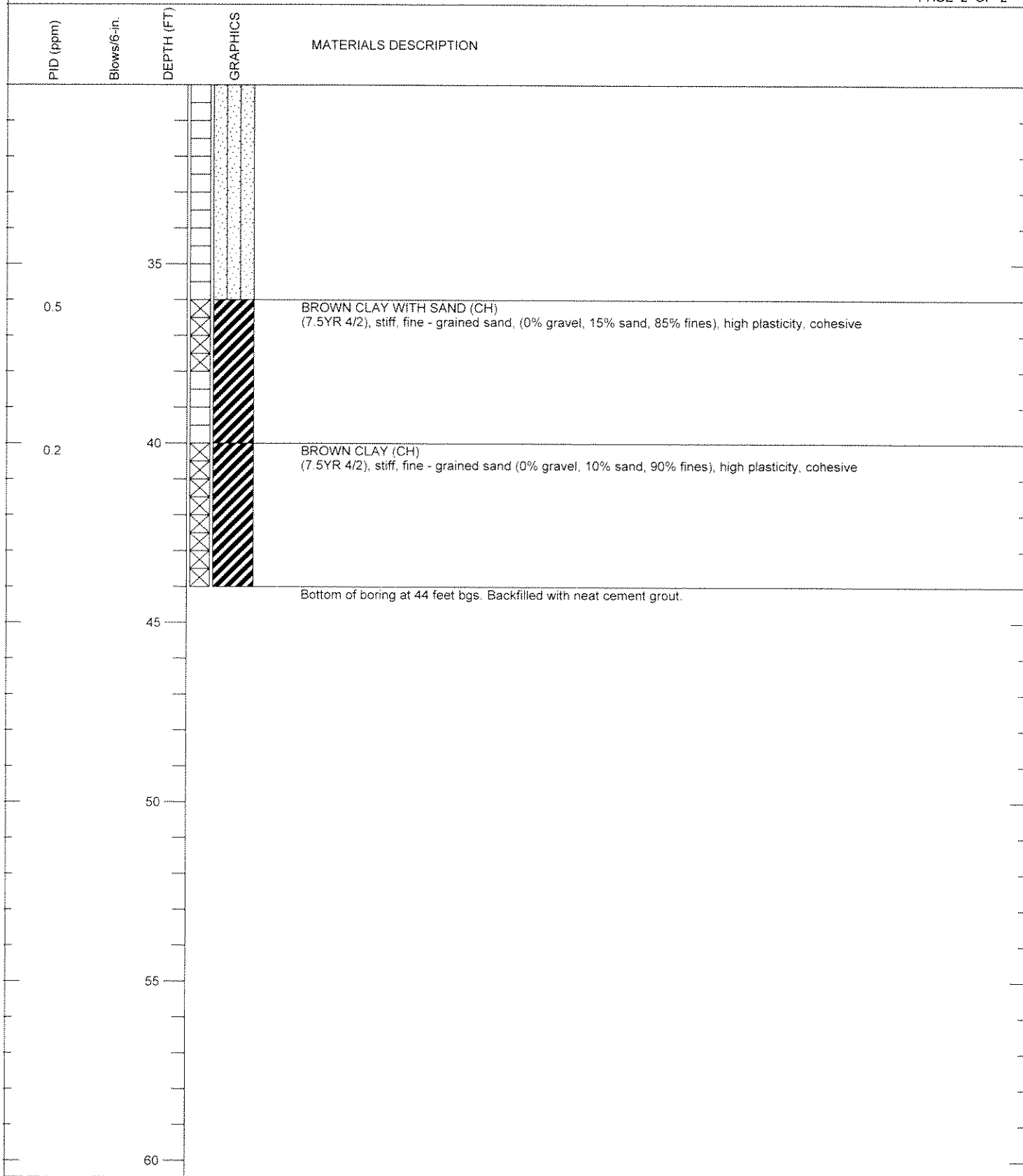
PROJECT	Regis Homes Bay Area, LLC	REVIEWED BY	GDT
LOCATION	39155 & 38183 State Street, Fremont, California	DIAMETER OF HOLE	7 inches
JOB NUMBER	1098.007.01.001	TOTAL DEPTH OF HOLE	5 feet
LOGGED BY	G. Creps	DATE STARTED	10/27/14
DRILL RIG	Direct push	DATE COMPLETED	10/27/14

PLATE
10



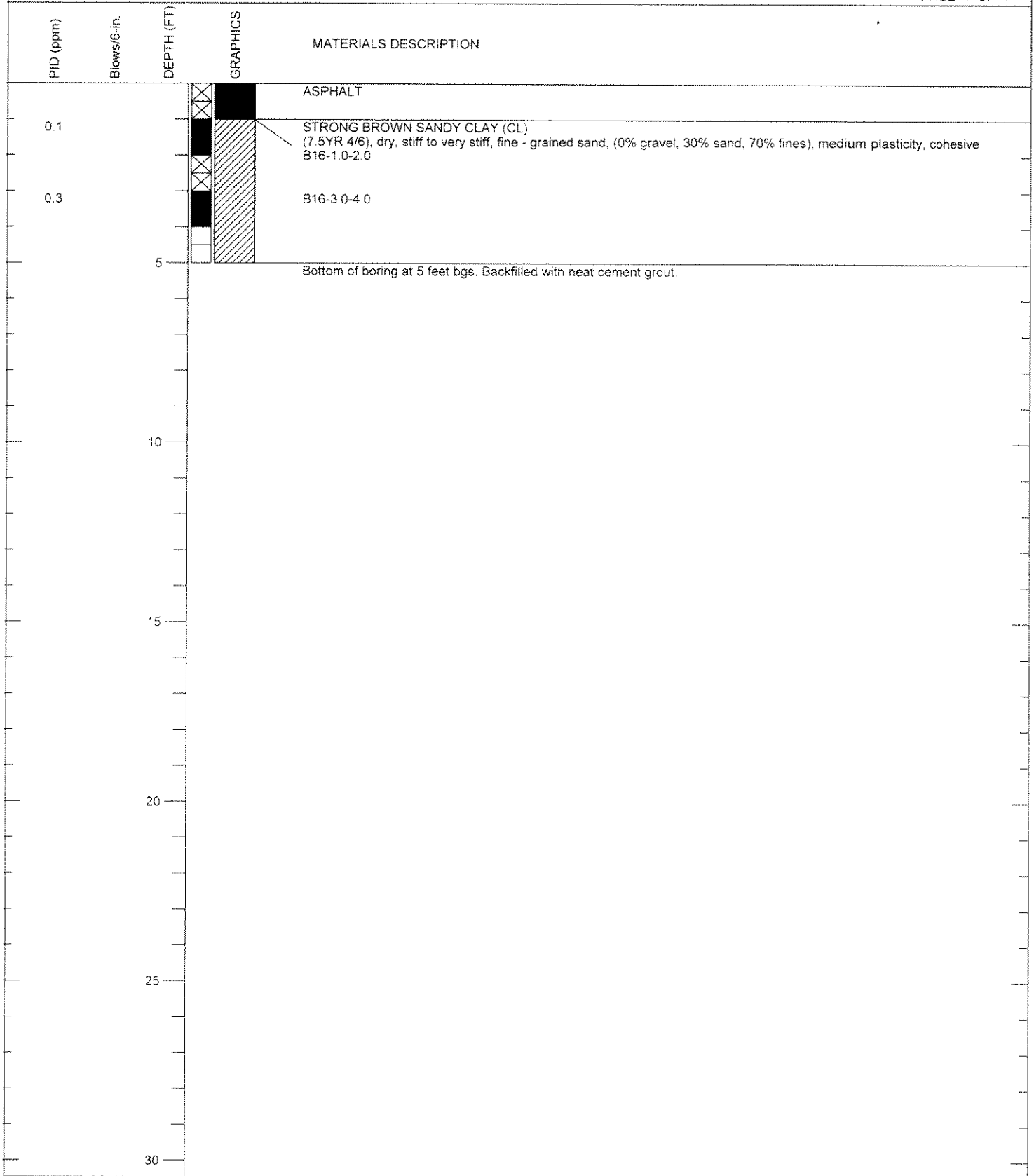
PROJECT	Regis Homes Bay Area, LLC	REVIEWED BY	GDT
LOCATION	39155 & 38183 State Street, Fremont, California	DIAMETER OF HOLE	7 inches
JOB NUMBER	1098.007.01.001	TOTAL DEPTH OF HOLE	44 feet
LOGGED BY	G Creps	DATE STARTED	10/27/14
DRILL RIG	Direct push	DATE COMPLETED	10/27/14

PLATE
11



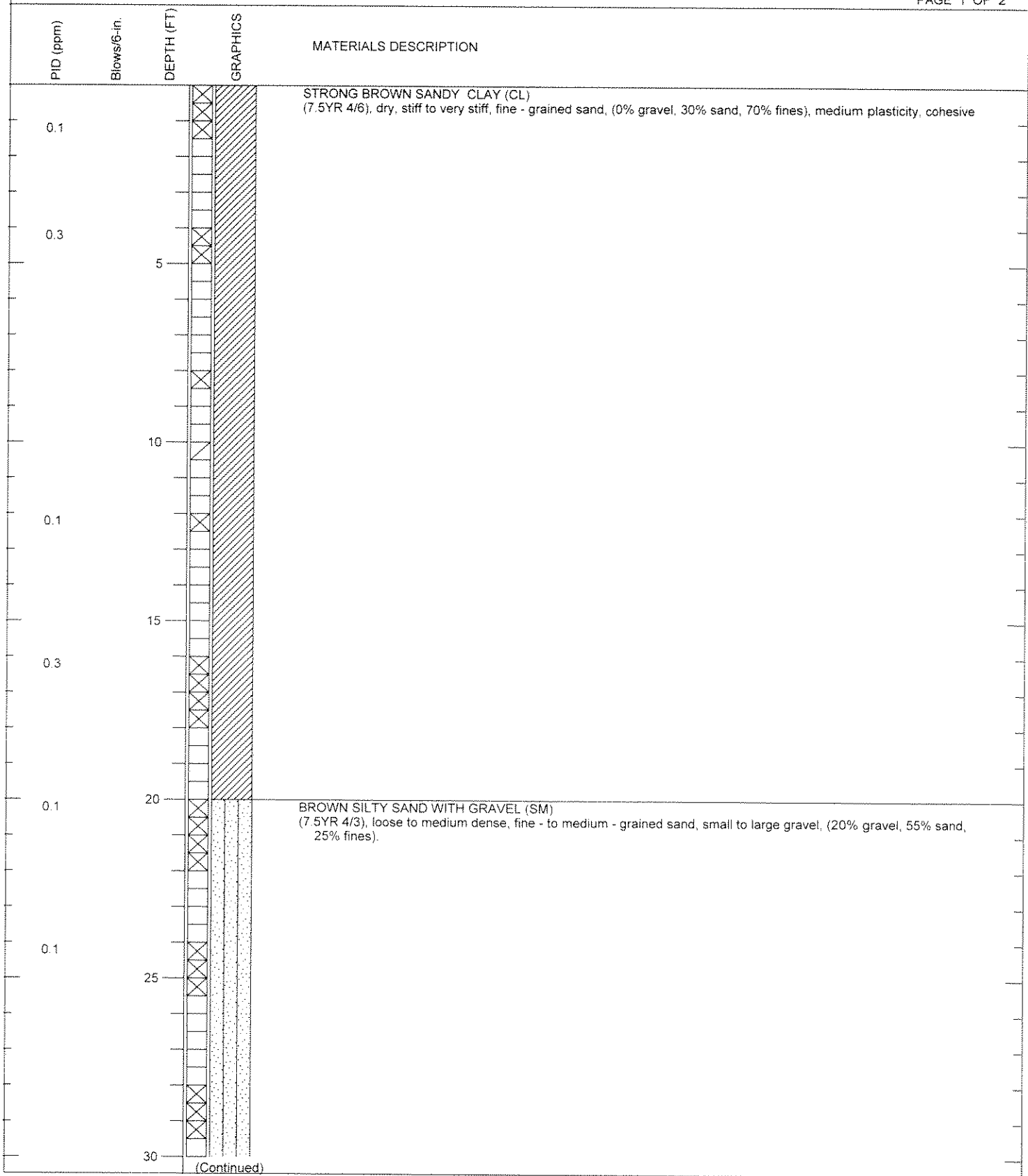
PROJECT	Regis Homes Bay Area, LLC	REVIEWED BY	GDT
LOCATION	39155 & 38183 State Street, Fremont, California	DIAMETER OF HOLE	7 inches
JOB NUMBER	1098.007.01.001	TOTAL DEPTH OF HOLE	44 feet
LOGGED BY	G. Creps	DATE STARTED	10/27/14
DRILL RIG	Direct push	DATE COMPLETED	10/27/14

PLATE
11



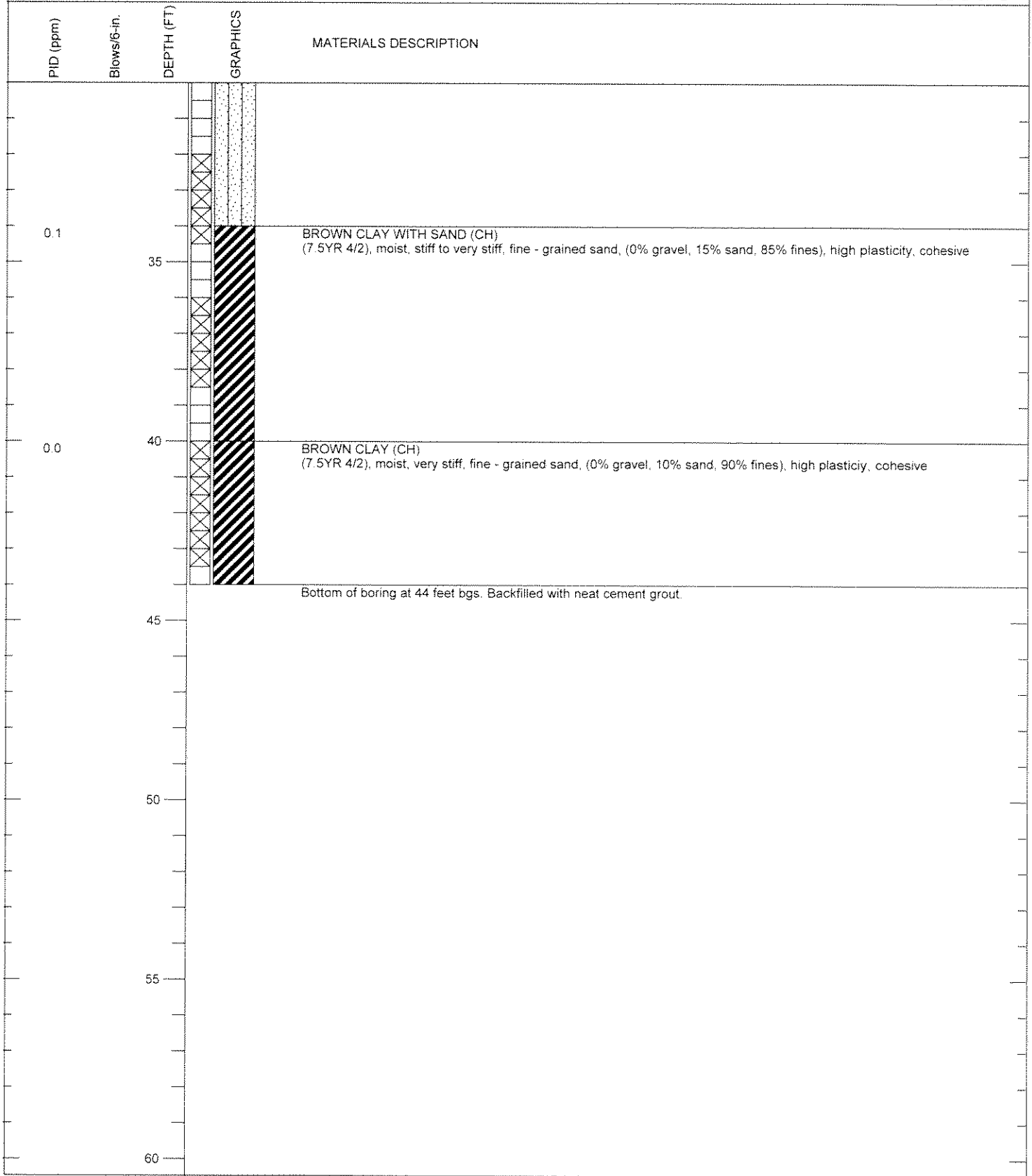
PROJECT	Regis Homes Bay Area, LLC	REVIEWED BY	GDT
LOCATION	39155 & 38183 State Street, Fremont, California	DIAMETER OF HOLE	7 inches
JOB NUMBER	1098.007.01.001	TOTAL DEPTH OF HOLE	5 feet
LOGGED BY	G. Creps	DATE STARTED	10/27/14
DRILL RIG	Direct push	DATE COMPLETED	10/27/14

PLATE
12



PROJECT	Regis Homes Bay Area, LLC	REVIEWED BY	GDT
LOCATION	39155 & 38183 State Street, Fremont, California	DIAMETER OF HOLE	7 inches
JOB NUMBER	1098.007.01.001	TOTAL DEPTH OF HOLE	44 feet
LOGGED BY	G. Creps	DATE STARTED	10/27/14
DRILL RIG	Direct push	DATE COMPLETED	10/27/14

PLATE
13



PROJECT	Regis Homes Bay Area, LLC	REVIEWED BY	GDT
LOCATION	39155 & 38183 State Street, Fremont, California	DIAMETER OF HOLE	7 inches
JOB NUMBER	1098.007.01.001	TOTAL DEPTH OF HOLE	44 feet
LOGGED BY	G. Creps	DATE STARTED	10/27/14
DRILL RIG	Direct push	DATE COMPLETED	10/27/14

PLATE
13