

Detterman, Mark, Env. Health

From: Costello, Timothy [Timothy.Costello@tetrattech.com]
Sent: Monday, June 01, 2015 4:59 PM
To: Detterman, Mark, Env. Health
Cc: Kingsley Aduaka
Subject: Rockridge Shopping Center, 51st & Broadway, Oakland
Attachments: Rockridge - Overlay of New Bldgs Over Existing 5-29-15.pdf; Quarry Overlay Figures - Existing and Proposd Development - 5100 Broadway.pdf; Aerial Photographs - 1939 - 1946 - 1958 - 1968 - 5100 Broadway.pdf; Bilger Quarry Photograph.pdf

Mark,

During our project kickoff meeting last week it was agreed that we would forward various documents to you to supplement the environmental reports provided to date.

Attached is:

1. Overlay figure showing existing and proposed buildings at the shopping center.
2. A file containing two figures showing the outline of the former quarry, with respect to existing and proposed buildings.
3. A file containing four historical aerial photographs, showing the quarry operation from 1939 to 1958, with a 1969 photograph included showing the shopping center.
4. An old photograph of the quarry, taken from a previous Tetra Tech Phase I ESA report.

There are several remaining items to forward; we'll get those to you in the coming days.

Feel free to reply or call if you have any questions.

Thank you,
Tim.

Tim Costello | Senior Scientist, Associate

Direct: 916.853.4584 | Main: 916.853.1800 | Fax: 916.853.1860
Cell: 916.704-4715 tim.costello@tetrattech.com

Tetra Tech, Inc. (formerly Tetra Tech GEO)
2969 Prospect Park Drive, Suite 100 | Rancho Cordova, CA 95670
www.tetrattechgeo.com www.tetrattech.com

SHOPS AT THE RIDGE

PLEASANT VALLEY AND BROADWAY
OAKLAND, CA



No.	Date	Revision

ARCHITECT
jrdv
1000 California Ave.
Pleasanton, CA 94566
TEL: 925.462.1000
WWW.JRDV.COM

CONSULTANTS
STRUCTURAL & MEP ENGINEERS -
ARUP
SAN FRANCISCO, CA

LANDSCAPE ARCHITECTS -
PLANNERS PLEASANTON, CA

CIVIL ENGINEERING
MEP ENGINEERS SUPERVISORS
PLANNERS PLEASANTON, CA

EXPANDED CONSULTANT -
INTERNATIONAL PARKING DESIGN
OAKLAND, CA

UTILITY CONSULTANT -
UTILITY CONSULTING SERVICES
PESERO, CA

TRAFFIC ENGINEERING CONSULTANT -
ALLANA BUCHAN & ASSOCIATES, INC.
PACIFIC PALISADES, CA

**FOR DESIGN INTENT ONLY
NOT FOR CONSTRUCTION**

PROJECT NO. 150101 PFC
DATE: December 2014

SITE PLAN
OVERLAY

A001



DRAWING FILE: N:\Projects\Completed\Projects\150101 PFC\CAD\DWG\SHOPS_AT_THE RIDGE_A001.dwg
PLOTTED AT 3.50pm on May 29, 2015 by: jrdv

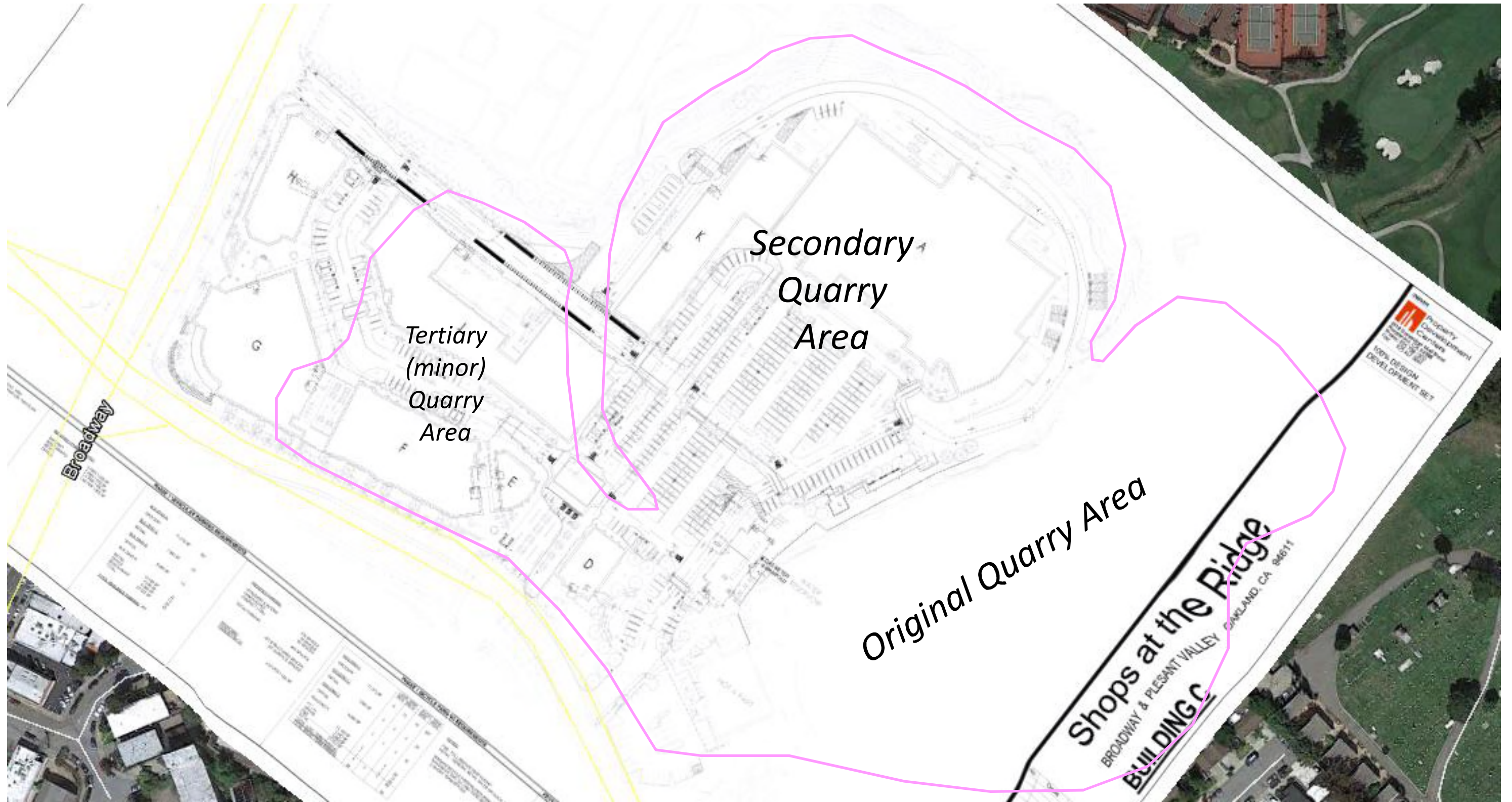


Approximate Quarry Boundary (top of slope)


SOURCE: Google Earth Pro, June 14, 2014 base map aerial with 1958 aerial overlay.

Former Rockridge Dry Cleaner tenant space (5114 Broadway)

TITLE: Approximate Former Quarry Limits and Existing Buildings			
LOCATION:		Shops at the Ridge 5100 Broadway Oakland, California	
	CHECKED:	TRC	FIGURE: 1
	DRAFTED:	KDH	
	FILE:	117-4704123.0	
	DATE:	06-06-144	

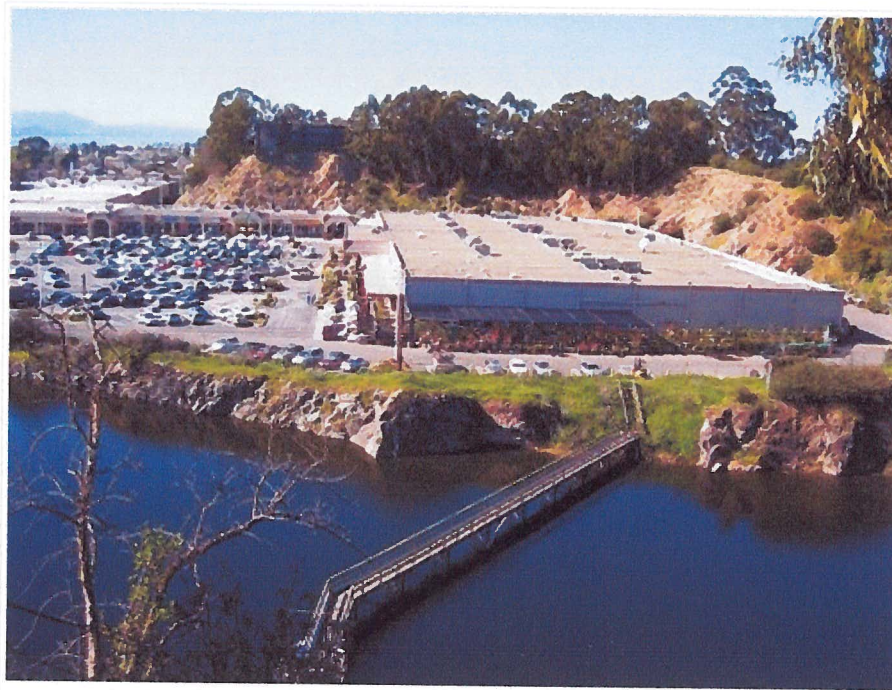


SOURCE: Google Earth Pro, June 14, 2014 base map aerial with quarry boundary and proposed redevelopment.

TITLE: Approximate Former Quarry Limits and Proposed Redevelopment			
LOCATION: Shops at the Ridge 5100 Broadway Oakland, California			
 TETRA TECH	CHECKED:	TRC	FIGURE: 2
	DRAFTED:	KDH	
	FILE:	117-4704123.0	
	DATE:	06-06-144	



ILL. No. 136. BLAKE & BILGER QUARRY (FORMERLY OAKLAND PAVING CO.),
MCADAM STREET, OAKLAND.



Bilger Quarry
photo from Oakland Geology¹

The **Bilger Quarry** was originally owned by the Oakland Paving Company which mined Franciscan quartz Diorite in the quarry, crushed it and then shipped the finished product out on the railway that crossed Broadway and 42nd Street on to the depot at 41st Street and Shafter Street. Later the quarry was operated by Blake & Bilger Company.

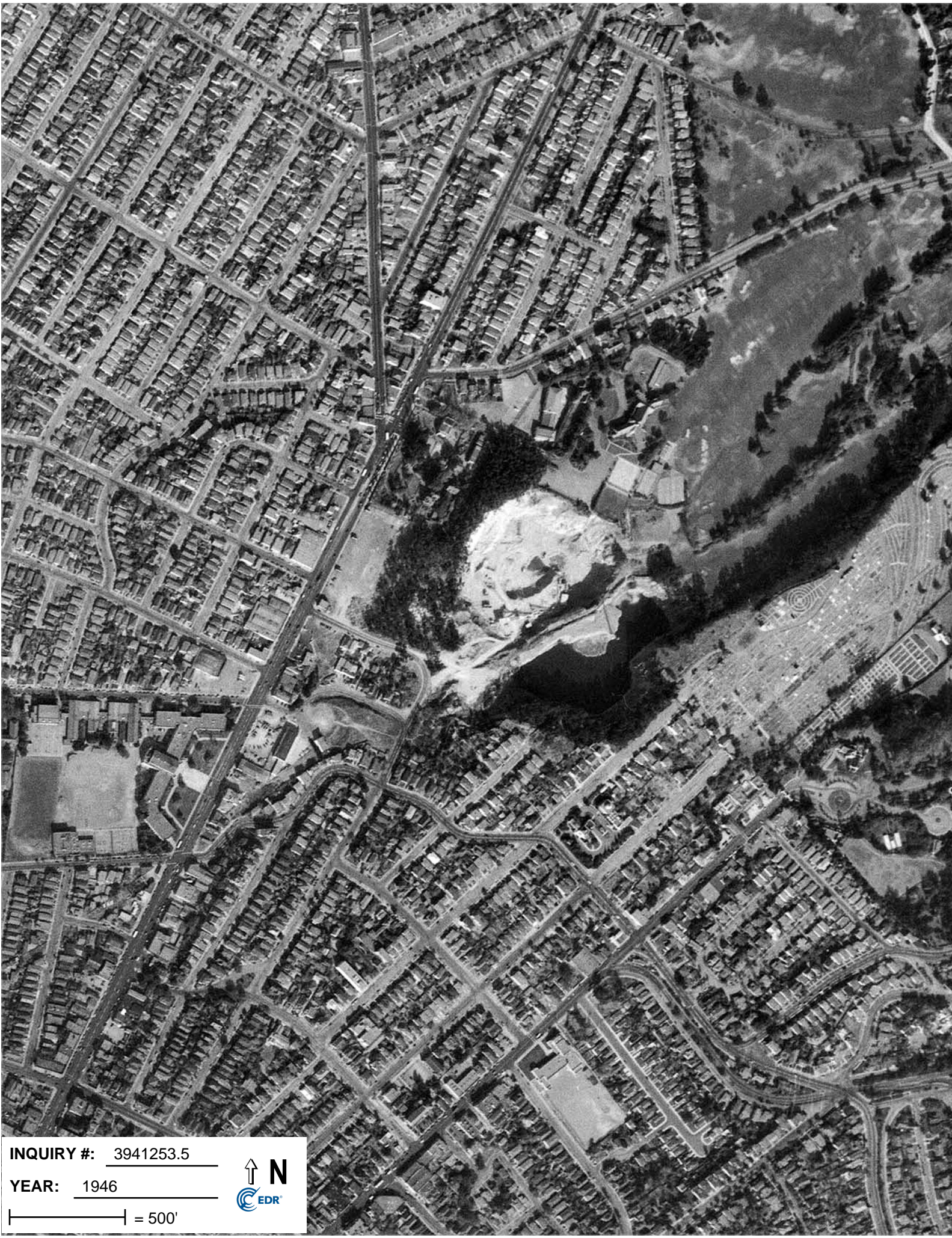


INQUIRY #: 3941253.5

YEAR: 1939

| = 500'





INQUIRY #: 3941253.5

YEAR: 1946

| = 500'





INQUIRY #: 3941253.5

YEAR: 1958

| = 500'





INQUIRY #: 3941253.5

YEAR: 1968

| = 500'

