

From: [Andy Lojo](#)
To: [Wickham, Jerry, Env. Health](#)
Subject: FW: PS-Newark plans showing property line and landscaping easment.
Date: Wednesday, February 25, 2015 1:47:42 PM
Attachments: [PS-Newark Bid Set 2-19-15 Part2.pdf](#)

Hi Jerry,

Here is a PDF with a good map showing the property line and landscaping easement.

Andy

Andrew Lojo P.G. | Senior Consultant | USA
Antea® Group

505 14th Street, Suite 923
Oakland, California 94612

Direct 510 588 8524 | Mobile 510 703 5696 | USA Toll Free 800 477 7411
andy.lojo@anteagroup.com | www.anteagroup.com



Member of Inogen® | www.inogenet.com

This e-mail is personal. For our full disclaimer, please visit
<http://www.anteagroup.com/confidentiality>.



701 WESTERN AVENUE
GLENDALE, CA 91201
T 818 244 8080



Stantec Architecture Inc.
38 Technology Drive, Suite 100
Irvine, CA 92618

Tel. 949.923.6205
Fax. 949.632.2557
www.stantec.com

Design with community in mind



CONSULTANTS
LARS ANDERSEN & ASSOCIATES, INC.
CIVIL ENGINEERS - LAND SURVEYORS - PLANNERS
4884 WEST JACQUELIN AVENUE - FRESNO CALIFORNIA 93722
TEL: 559 276-2790 FAX: 559 276-0850 WWW.LARSANDERSEN.COM

DANIEL J. ZOLDAK RCE 66124 DATE:

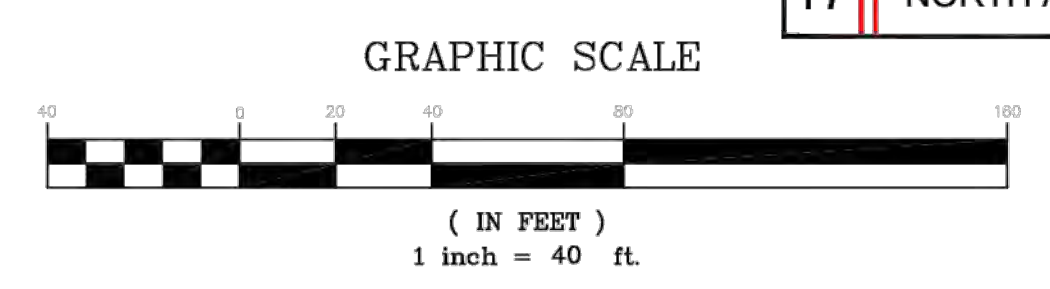


9 LEGEND

- AC ASPHALT
- APN ASSESSOR PARCEL NUMBER
- BFP BACK FLOW PREVENTOR
- BOL BOLLARD
- BLDG BUILDING
- BSL BUILDING SETBACK LINE
- CB CATCH BASIN
- CL CENTERLINE
- CONC CONCRETE
- CP CONCRETE PAD
- DCV DOUBLE CHECK VALVE
- DWY DRIVEWAY
- EB ELECTRICAL BOX
- EC ELECTRICAL CABINET
- EM ELECTRICAL METER
- EMH ELECTRICAL MANHOLE
- EV ELECTRICAL VAULT
- FC FACE OF CURB
- FDC FIRE DEPARTMENT CONNECTION
- PH FIRE HYDRANT
- GMH GAS MANHOLE
- GM GAS METER
- GV GAS VALVE
- MH MANHOLE
- MW MONITORING WELL
- FOUN 3" BRASS DISK W/ PUNCH
- SET 3/4" INCH IRON PIPE
- TAGG TAGGED L55342
- WATER WATER LINE (VIA USA MARKINGS)
- RCP STORMDRAIN LINE, REINFORCED CONCRETE PIPE
- VCP SANITARY SEWER LINE, VITRIFIED CLAY PIPE
- E ELECTRICAL LINE (VIA USA MARKINGS)
- PIV POST INDICATOR VALVE
- PLR PLANTER
- PM PARKING METER
- PP POWER POLE
- PL PROPERTY LINE
- PUE PUBLIC UTILITY EASEMENT
- SQ. FT. SQUARE FEET
- SL STREET LIGHT
- SLB STREET LIGHT BOX
- SDMH STORM DRAIN MANHOLE
- SSOD SANITARY SEWER CLEANOUT
- SSMH SANITARY SEWER MANHOLE
- TE TRASH ENCLOSURE
- TEL TELEPHONE
- TMH TELEPHONE MANHOLE
- TYT TELEPHONE VAULT
- TRANS TRANSFORMER
- TS TRAFFIC SIGNAL
- TSS TRAFFIC SIGNAL BOX
- UB UTILITY BOX
- UV UTILITY VAULT
- WM WATER METER
- WV WATER VALVE
- YL YARD LIGHT
- ENCROACHMENTS DENOTES ENCROACHMENTS
- CORRESPONDENCE TO SCHEDULE B

SCALE: 1" = 40'

17 NORTH ARROW / SCALE



THE UNDERGROUND UTILITIES SHOWN HAVE BEEN LOCATED FROM FIELD SURVEY INFORMATION AND EXISTING DRAWINGS. THE SURVEYOR MAKES NO GUARANTEE THAT THE UNDERGROUND UTILITIES SHOWN COMPRISE ALL SUCH UTILITIES IN THE AREA, EITHER IN SERVICE OR ABANDONED. THE SURVEYOR FURTHER DOES NOT WARRANT THAT THE UNDERGROUND UTILITIES SHOWN ARE IN THE EXACT LOCATION INDICATED ALTHOUGH HE DOES CERTIFY THAT THEY ARE LOCATED AS ACCURATELY AS POSSIBLE FROM THE INFORMATION AVAILABLE. THIS SURVEYOR HAS NOT PHYSICALLY LOCATED THE UNDERGROUND UTILITIES. ALL UNDERGROUND UTILITIES SHOULD BE FIELD VERIFIED BY THE CONTRACTOR PRIOR TO COMMENCING ANY ONSITE WORK.

19 SURVEY DRAWING

18 ALTA/ACSM Land Title Survey

This survey prepared in accordance with the "Minimum Standard Detail Requirements for ALTA/ACSM Land Title Surveys" (Effective February 23, 2011)

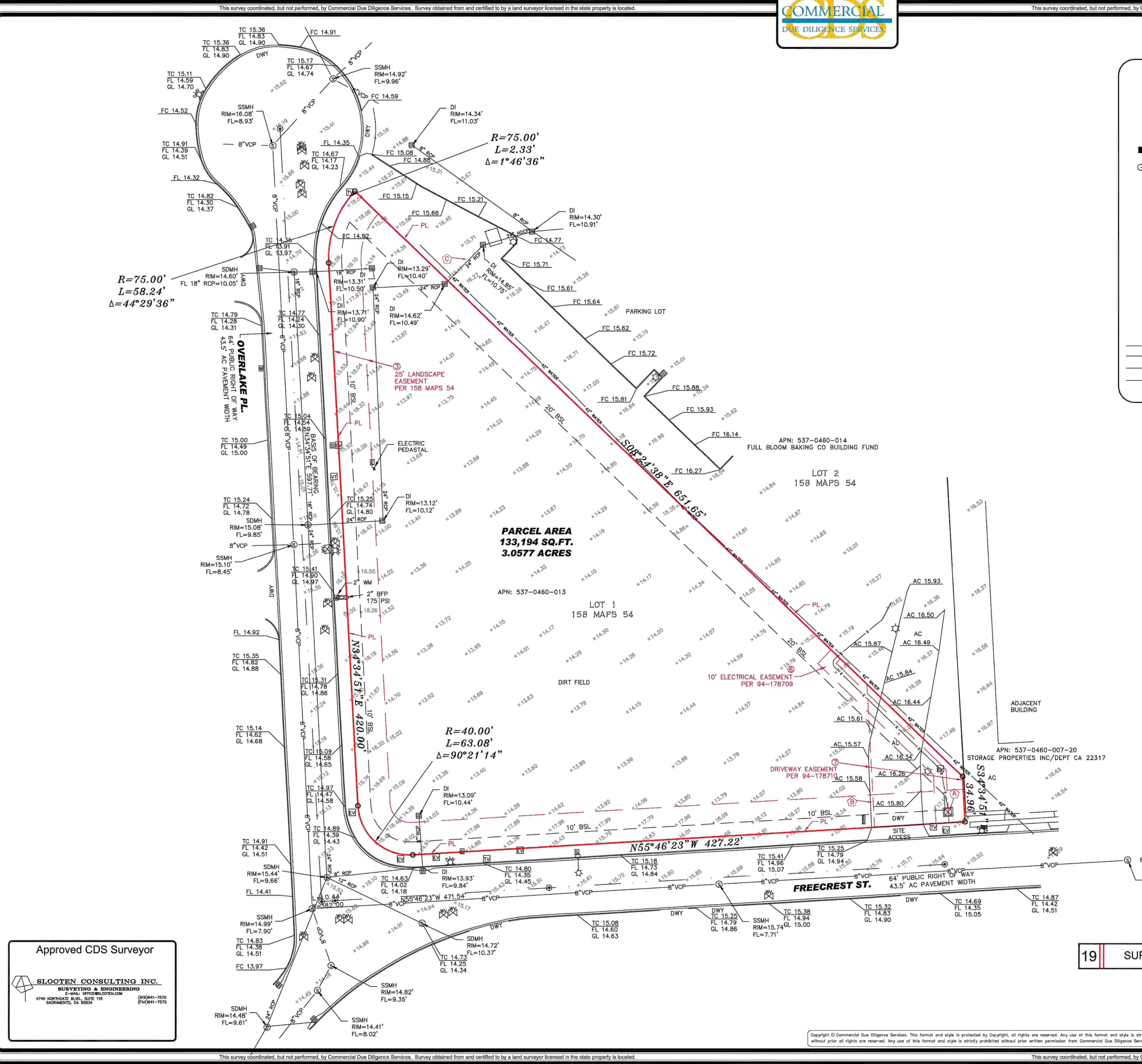
This Work Coordinated By:
COMMERCIAL DUE DILIGENCE SERVICES

1700 South Broadway, Bldg E
Moore, Oklahoma 73160
Office: 405.378.8800 - Fax: 405.703.1851
Toll Free: 888.457.8788

Drawn By: S.W.	Date: 2/24/2014
Surveyor Ref No: 9851-01	Revision: COMMENTS
Apprd By: M.R.	Date:
Field Date: FEBRUARY 5, 2014	Revision:
Scale: 1"=40'	Date:
	Revision:

Prepared For:
Client Ref. No:

20 PROJECT ADDRESS
6800 OVERLAKE PLACE
NEWARK, CA 94560
Project Name:
PS STORAGE, NEWARK CA
CDS Project Number:
14-01-12689



Approved CDS Surveyor
SLOOTEN CONSULTING INC.
SURVEYING & ENGINEERING
4740 OVERLAKE BLVD. SUITE 115
NEWARK, CA 94560 (925)644-7821 (925)644-7821

FOR REFERENCE ONLY

REVISIONS

NO.	DESCRIPTION	DATE
1	BID SET	2/18/14

DATE ISSUED:
REVIEWED BY: DZ
DRAWN BY: DR
DESIGNED BY: DR

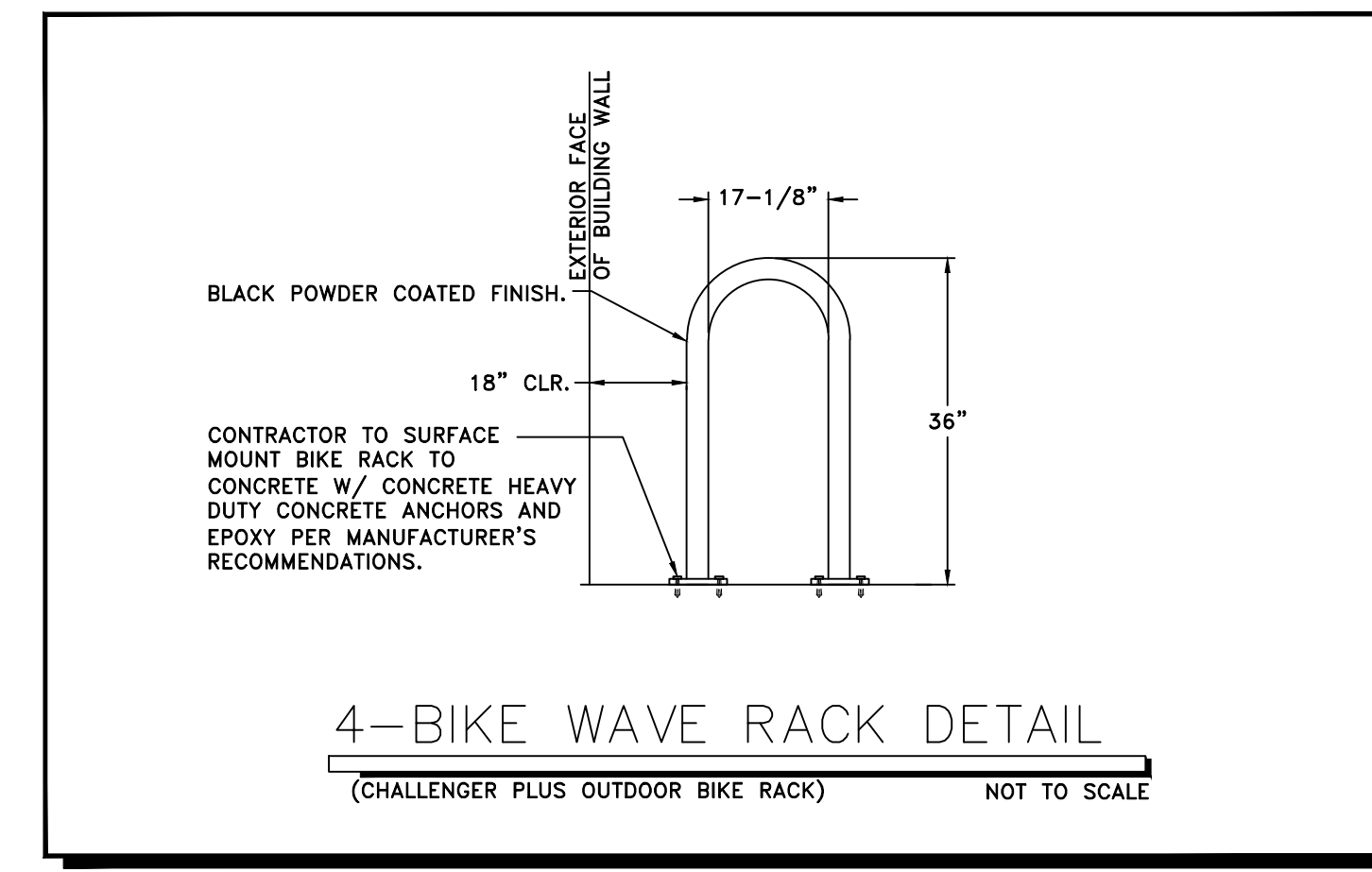
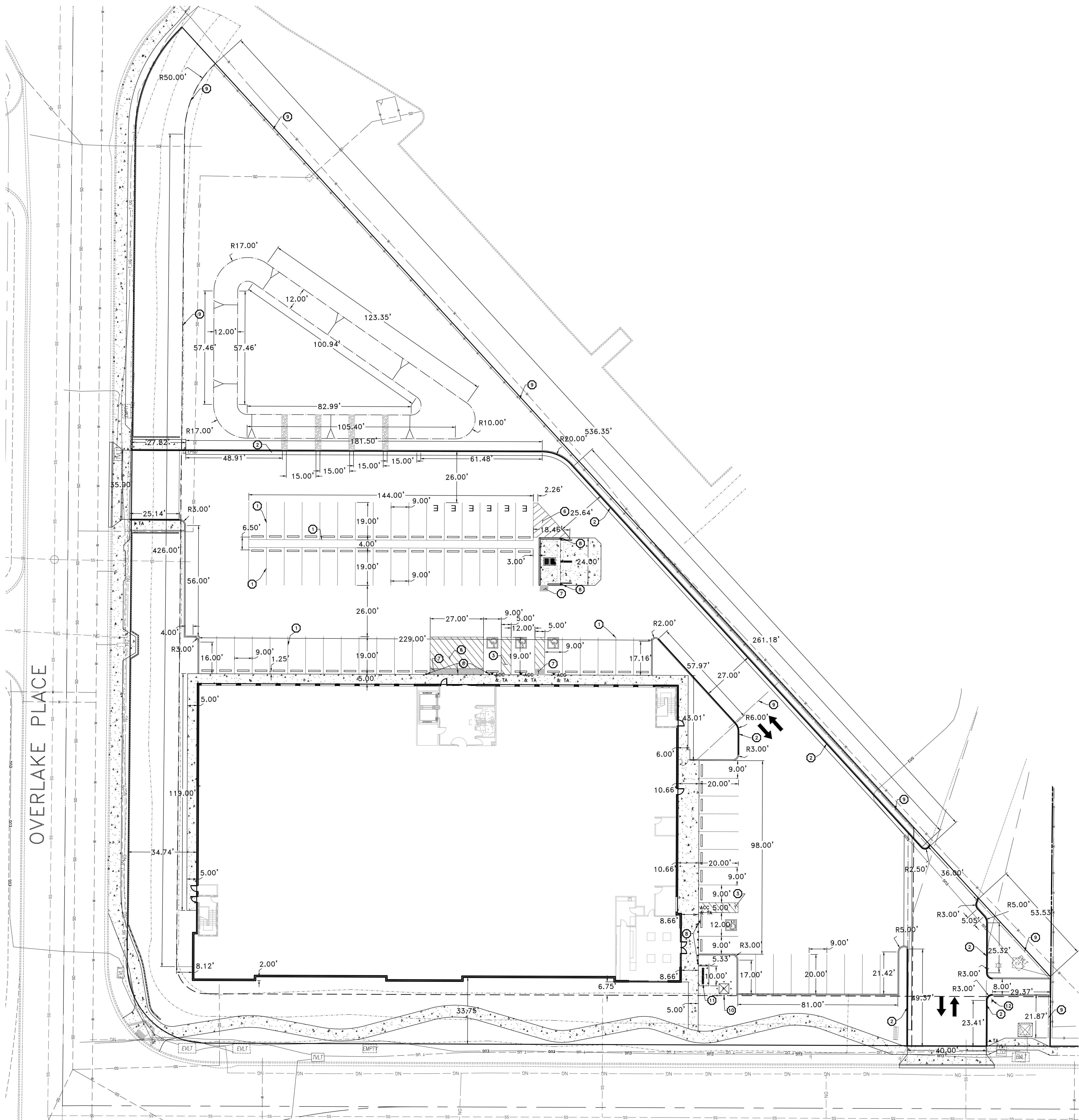
SHEET TITLE
TOPOGRAPHICAL SURVEY

SHEET NUMBER

C2.2
ARCHITECT PROJECT NUMBER
2007554004

LA PROJECT NUMBER: 13107

FOR BIDDING PURPOSES ONLY NOT FOR CONSTRUCTION

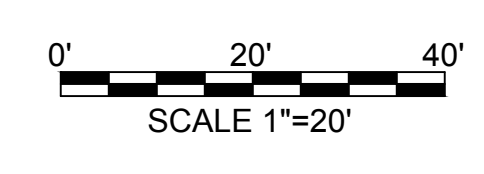
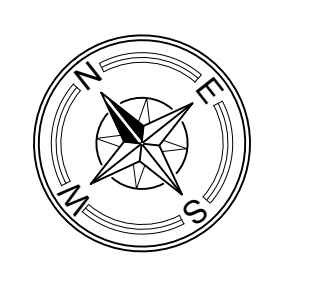


STRIPING NOTES:

1. ALL CONSTRUCTION MATERIALS FOR TRAFFIC SIGNS, TRAFFIC STRIPING, PAVEMENT MARKERS, AND PAVEMENT MARKINGS SHALL BE FURNISHED AND INSTALLED BY THE CONTRACTOR.
2. WHITE PAINT FOR PARKING STALLS AND TRAFFIC CONTROL SHALL BE SHERWIN WILLIAMS S-W TRAFFIC MARKING SERIES B-27-Y-2 OR APPROVED EQUAL.
3. ALL STRIPING SHALL BE TWO COATS, MINIMUM.

CONSTRUCTION LEGEND AND SYMBOLS :

- DO NOT ENTER: PAINT "DO NOT ENTER" IN WHITE PAINT WITH 3/8" BOLD STENCIL LETTERS
- INSTALL PRECAST CONCRETE WHEEL STOP PER DETAIL NO.3 ON SHEET C9.0
 - ON-SITE DIRECTIONAL ARROWS TO BE PAINTED IN THE CENTER OF DRIVE AISLE. PER DETAIL NO. 5 ON SHEET C9.0
 - PAINT 4" WIDE DIAGONAL STRIPES AT 36" MAX O.C. PER DETAIL NO. 5 ON SHEET C9.0
 - SEE KEY NOTES BELOW FOR PAINT COLOR.
 - ⊕ PAINT ACCESSIBLE PARKING EMBLEM PER CBC ACCESSIBLE PARKING DETAILS ON SHEET C9.0
 - ⊕ PAINT VAN PARKING EMBLEM AND VAN PARKING SIGN PER A.D.A. STANDARD AND REQUIREMENT.
 - ▼ R1-1 INSTALL "STOP" SIGN, R1-1 PER LATEST CALTRANS (MUTCD) STANDARDS.
 - ▼ ACC INSTALL ACCESSIBLE PARKING SIGN OR VAN PARKING SIGN PER PLAN DETAIL NO.7 AND CBC ACCESSIBLE PARKING DETAILS ON SHEET C9.0
 - ▲ TA INSTALL TOW-AWAY SIGN PER CBC ACCESSIBLE PARKING DETAILS ON SHEET C9.0
 - ▲ TA-CVC INSTALL TOW-AWAY SIGN PER CALIFORNIA VEHICLE CODE 22658A.
 - ▲ R6-1 INSTALL "ONE-WAY" SIGN, PER LATEST CALTRANS (MUTCD) STANDARDS.
 - ▲ R5-1 INSTALL "DO NOT ENTER" SIGN, PER LATEST CALTRANS (MUTCD) STANDARDS.
 - ▲ R5-1c INSTALL "WRONG WAY" SIGN, PER LATEST CALTRANS (MUTCD) STANDARDS.
 - ▲ W14-1 INSTALL "DEAD END" SIGN, PER LATEST CALTRANS (MUTCD) STANDARDS.
 - ▲ SR46(CA) INSTALL "EMERGENCY ACCESS-KEEP CLEAR" SIGN. MOUNT TO GATE OR WALL AS SHOWN ON PLAN.
 - ▲ R25A(CA) INSTALL MODIFIED R25A(CA) "LOADING ONLY" SIGN. MOUNT TO BUILDING. SEE DETAIL ON THIS SHEET.
 - E FUEL EFFICIENT CAR *PAINT "CLEAN AIR VEHICLE" AT REAR OF STALL.
- 1 4" WHITE STRIPES (TWO COAT MINIMUM, ALKYD BASE SYNTHETIC RESIN, FEDERAL SPEC. TTP-115), TYPICAL ON ALL PARKING LINES.
 - 2 PAINT FACE OF CURB RED
 - 3 PAINT 4" WIDE DIAGONAL WHITE STRIPES ACCESSIBLE PARKING LOADING AND ACCESSIBLE PEDESTRIAN ROUTE AT 3" O.C. WITH 4" WIDE BLUE PERIMETER STRIPE, 2 COATS. PAINT "NO PARKING" WHITE LETTERING, 12" MINIMUM HIGH AND VISIBLE TO TRAFFIC ENFORCEMENT OFFICIALS. STRIPED AREA TO BE 2% MAX. IN ANY DIRECTION. SEE DETAILS ON SHEET C9.0
 - 4 INSTALL CONCRETE BOLLARD
 - 5 PROPOSED GATE CONTROLLER LOCATION WITH PROTECTIVE BOLLARDS. INSTALL PER MANUFACTURER RECOMMENDATIONS.
 - 6 PAINT 4" WIDE DIAGONAL WHITE STRIPES AT 3" O.C. WITH 4" WIDE WHITE STRIPES. TWO COAT MINIMUM.
 - 7 INSTALL 36" WIDE DETECTABLE WARNING STRIP (TRUNCATED DOMES) PER C.B.C. STANDARDS AND REQUIREMENTS.
 - 8 INSTALL CONCRETE BOLLARD PER DETAIL ON ARCHITECTURAL PLANS.
 - 9 CONSTRUCT FENCE AND GATE PER ARCHITECTS PLANS.
 - 10 TRANSFORMER LOCATION. SEE ARCHITECT PLANS AND UTILITY COMPANY FOR BOLLARD LOCATIONS.
 - 11 INSTALL 4-BIKE RACK PER DETAIL ON THIS SHEET.
 - 12 INSTALL SIGN WITH FOLLOWING WORDING, "PRIVATE ACCESS FOR PUBLIC STORAGE PERSONNEL ONLY"



701 WESTERN AVENUE
GLENDALE, CA 91201
T 818 244 8080



Stantec Architecture Inc.
38 Technology Drive, Suite 100
Irvine, CA 92618

Tel. 949.923.6205
Fax. 949.632.2557
www.stantec.com

Design with community in mind



CONSULTANTS
LARS ANDERSEN & ASSOCIATES, INC.
CIVIL ENGINEERS - LAND SURVEYORS - PLANNERS
4684 WEST JACQUELIN AVENUE - FRESNO CALIFORNIA 93722
TEL: 559 276-2790 FAX: 559 276-0850 WWW.LARSANDERSEN.COM

DANIEL J. ZOLDAK RCE 66124 DATE:

PUBLIC STORAGE

6800 Overlake Place
Newark, CA 94560

REVISIONS

NO.	DESCRIPTION	DATE
1	BID SET	2/18/14

DATE ISSUED:
REVIEWED BY: DZ
DRAWN BY: DR
DESIGNED BY: DR

SHEET TITLE
**SIGNAGE,
STRIPING &
HORIZONTAL
CONTROL PLAN**

SHEET NUMBER

C3.0

ARCHITECT PROJECT NUMBER
2007554004

LA PROJECT NUMBER: 13107

FOR BIDDING PURPOSES ONLY NOT FOR CONSTRUCTION

