



5180 Golden Foothill Parkway, Suite 200, El Dorado Hills, CA 95762-9608

Alameda County

SEP 10 2010

Environmental Health

9/9/2010

Gino Ilacqua
Alameda County Environmental Health
1131 Harbor Bay Parkway
Alameda, CA 94502-6577

Re: **Diesel Fuel Spill Report**
CEMEX Construction Materials Pacific - Sunol Aggregate Plant
6527 Calaveras Road, Sunol

Mr. Ilacqua,

We submit this report of a small diesel fuel spill (30 gallons) that occurred at our above-referenced site on September 7, 2010. Information pertaining to the spill and cleanup is as follows:

- Spill occurred at approximately 14:10 in the afternoon. The diesel spilled into the surface of an exposed, compacted, aggregate haul road near one of the site's aggregate piles.
- The volume of spilled diesel was determined by the driver. It was his last load after working a full day so the levels in the fuel tanks were significantly reduced.
- Cause of spill was a broken fuel tank fitting (photo attached) on a contract aggregate haul truck that came in contact with a surface irregularity [Truck driver was warned of driving in the area].
- Leak was stopped quickly by contract driver (photo attached).
- Site-supplied dry absorbent was spread onto the spill area (photo attached).
- Site supervisor phoned the Environmental Manager (EM) to report the spill at approximately 14:30.
- EM responded by going to the site to observe the spill containment measures and to write up the spill report. EM arrived at approximately 15:00.
- EM placed a phone call and left a message with Robert Weston of Alameda County EHS to report the spill at 15:07.
- An auxiliary spill containment pan was placed under the fuel tank to ensure no additional leakage would occur when the tank fitting was replaced by the driver-company's mechanic.

- On the evening of 9/7/2010 CEMEX personnel scraped up the contaminated aggregate and absorbent material (estimated to be no more than 4 yards³) with one of the site's large skid loaders, after the truck was repaired and left the site.
- The contaminated material was placed onto an impervious heavy plastic sheet at the site, away from disturbance (photo attached).
- On the morning of 9/8/2010 the EM inspected the spill site and location of the contaminated material pile to ensure proper correction measures had been completed.

A copy of the Spill/Release report is attached. CEMEX awaits your response for handling and disposal of the contaminated material.

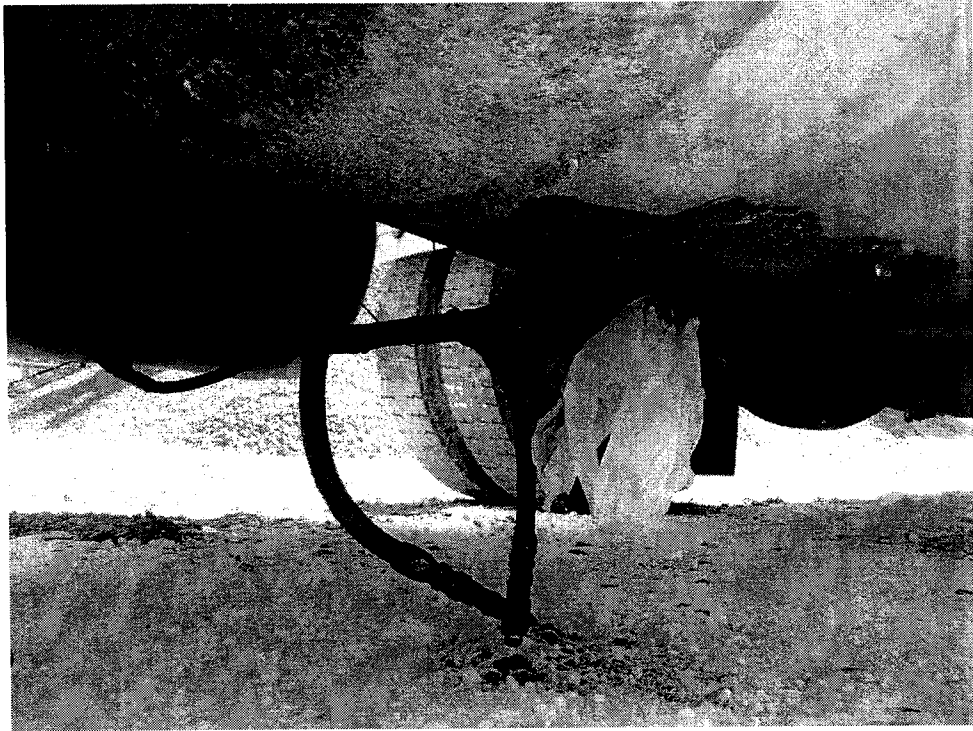
Please feel free to contact us at (925) 426-2261 if you need further clarification about the report.

Thank You



Robert Aldenhuysen
Environmental Manager

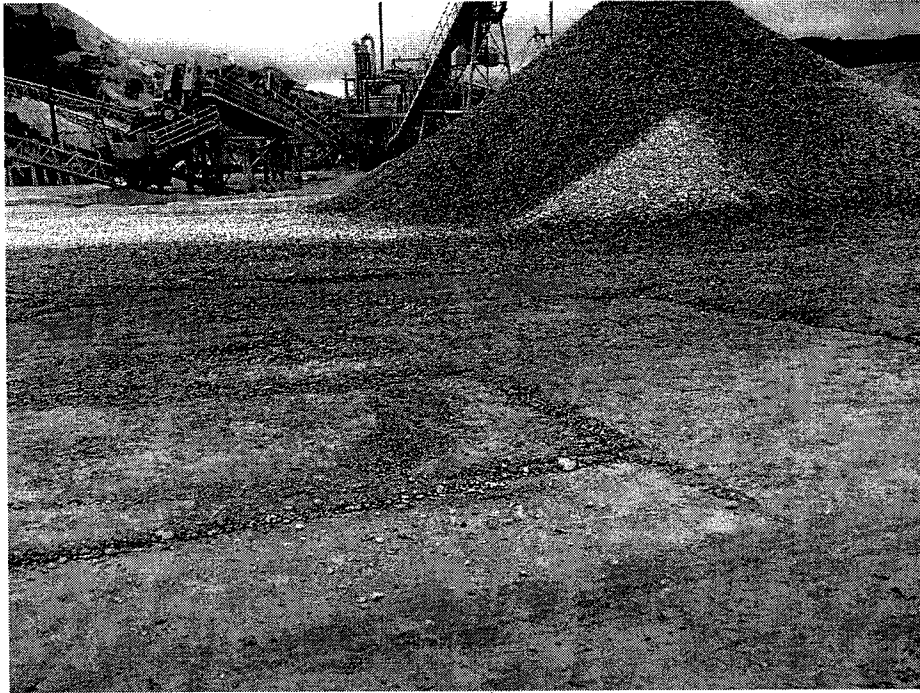
Enc.



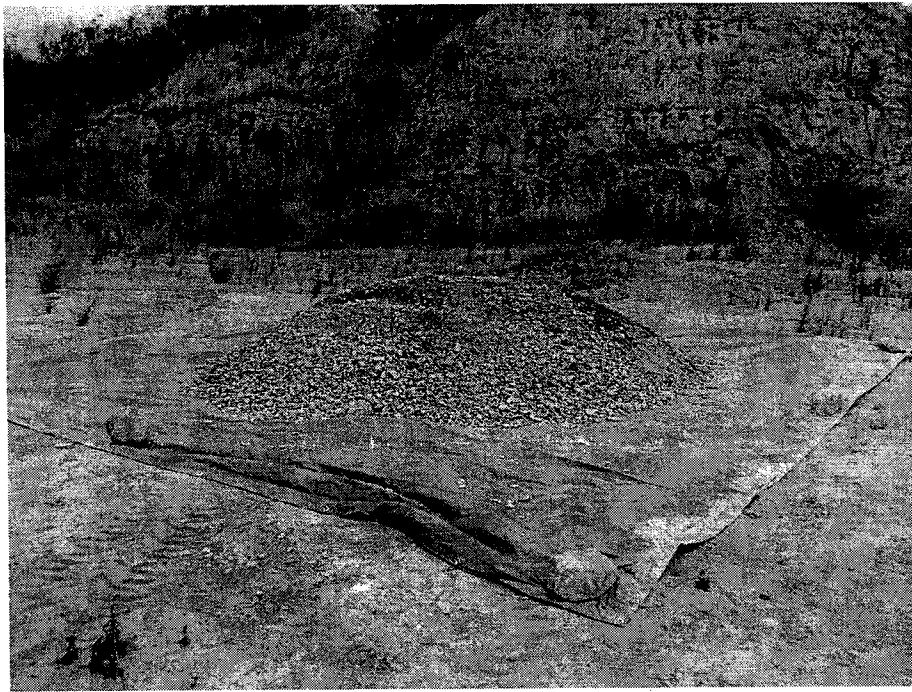
Broken fuel line and temporary tank seal.



Use of absorbent material to capture spill.



Scrape-cleaned spill location.



Volume of contaminated material.



SPILL/RELEASE INCIDENT REPORT

Date of Report: Sept 7, 2010

Recorded by: Robert Aldehogan

DATE and TIME OF SPILL: Sept 7, 2010 @ 14:00

CHEMICAL SPILLED: Diesel fuel

AMOUNT SPILLED (Gallons): 30

LOCATION OF SPILL: Flat yard aggregate pile

SOURCE OF SPILL: Fuel tank

*Williams Trucking
CMAC# 37112*

CAUSE OF SPILL: Connection line nipple broke

Type of equipment involved in cleanup: absorbent + sweep up

Was the spill approximately 55 gallons? Yes No Yes = immediate notification.

Did the spill enter any source of water (e.g. creek, pond, storm drain, etc.)? NO

Yes No If yes; immediate notification to State OES is required (see note below).

DID THIS INCIDENT REQUIRE NOTIFICATION? YES NO If yes, continue.

To County EHS

If the spill is on a highway call the Highway Patrol or CALTRANS first.

The following persons and agencies have been notified:

Alameda County EHS: Robert Weston @ 15:07 left msg.

Call 1-800-852-7550 to obtain OES Control Number.

OES Control Number: _____

Refer to Hazardous Materials Management Plan for telephone number of local agency contact.

A COPY OF THIS DOCUMENT MUST BE SUBMITTED QUICKLY TO THE DESIGNATED ENVIRONMENTAL MANAGER. SITE COPY MUST BE KEPT ON FILE FOR NO LESS THAN 3 YEARS.