

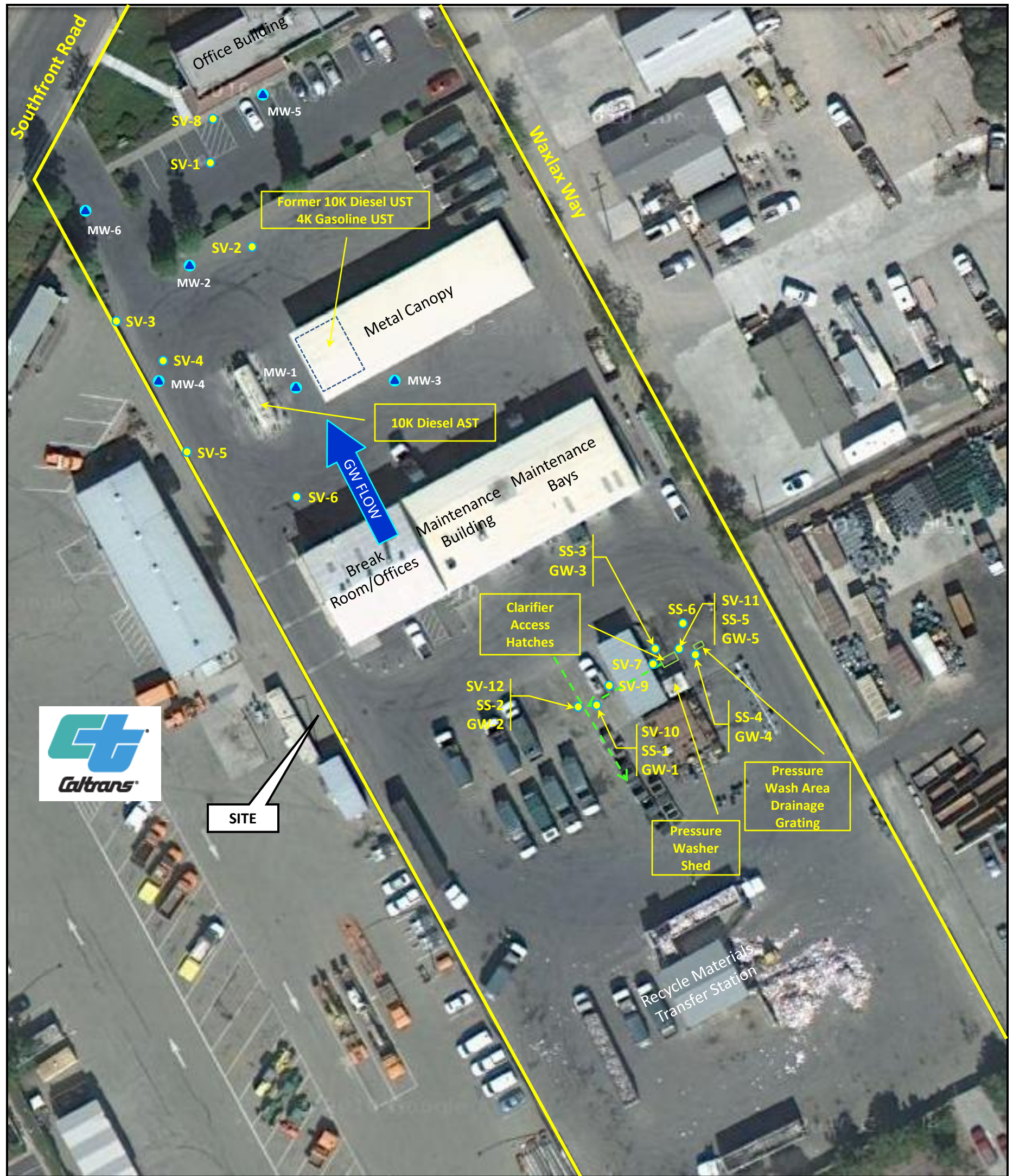
## Wickham, Jerry, Env. Health

---

**Subject:** RO3076\_PHONE\_LOG\_2011-08-23  
**Entry Type:** Phone call  
**Start:** Tue 8/23/2011 2:40 PM  
**End:** Tue 8/23/2011 2:40 PM  
**Duration:** 0 hours

Phone call with Jim Griener (Hydrogeologist) and Tianna Nourot of Waste Management and Tim Costello of TetraTech to discuss scope of work for Livermore site. I cautioned them that I was not prepared to discuss details on case. During the call, we reviewed the comments in my June 22, 2011 directive letter.

- 1) Vinyl Chloride in soil vapor. Tim Costello indicated there was no known source, just one anomalous point. I indicated that any potential sources and possible receptors needed to be investigated.
- 2) Benzene in soil vapor. Tim Costello indicated that benzene was related to the former UST release, which was a closed case. No soil vapor data were available at time of previous case closure. Tim Costello believed that data were consistent with previous closure and did not want to do further sampling for benzene. I indicated that soil vapor data were new information and we potentially could request additional work or land use restrictions.
- 3) TPHg in groundwater. Probably from the wash rack. Need to define extent.

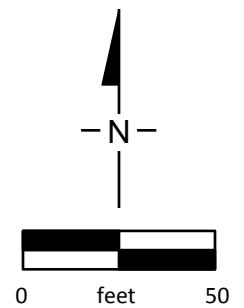


SOURCE: maps.google.com, 2011.

**Legend:**

- SCS Limited Phase II Sampling Location (soil vapor, soil and/or groundwater sample), July 27-28, 2010.
- - - - - → Sanitary Sewer Line (with direction of flow).
- Former groundwater monitoring well location (approximate).

MW-1



TITLE: <b>Plot Plan and Previous Sample Locations</b>			
LOCATION: 6175 Southfront Road Livermore, California			
	CHECKED:	TC	FIGURE: <b>1</b>
	DRAFTED:	KH	
	FILE:	117-2402xxx.01	
	DATE:	08-09-11	

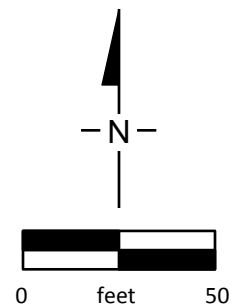


SOURCE: maps.google.com, 2011.

**Legend:**

- SCS Limited Phase II Sampling Location (soil vapor, soil and/or groundwater sample), July 27-28, 2010.
- - - - - ➔ Sanitary Sewer Line (with direction of flow).
- Former groundwater monitoring well location (approximate).

MW-1



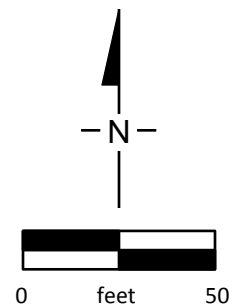
TITLE: <b>Grab Groundwater Data – July 2010</b>			
LOCATION: 6175 Southfront Road Livermore, California			
	CHECKED:	TC	FIGURE:  <b>2</b>
	DRAFTED:	KH	
	FILE:	117-2402xxx.01	
	DATE:	08-09-11	



SOURCE: maps.google.com, 2011.

**Legend:**

- SCS Limited Phase II Sampling Location (soil vapor, soil and/or groundwater sample), July 27-28, 2010.
  - - - - - → Sanitary Sewer Line (with direction of flow).
  - Former groundwater monitoring well location (approximate).
- MW-1  
130/180/370 Benzene/Ethylbenzene/Vinyl Chloride (µg/m3).



TITLE: <b>Soil Vapor Data – July 2010</b>			
LOCATION: 6175 Southfront Road Livermore, California			
	CHECKED:	TC	FIGURE: <b>3</b>
	DRAFTED:	KH	
	FILE:	117-2402xxx.01	
	DATE:	08-09-11	