

August 5, 2011

RECEIVED

11:01 am, Aug 11, 2011

Alameda County
Environmental Health

Ms. Barbara Jakub
Hazardous Materials Specialist
Alameda County Environmental Health
1131 Harbor Bay Parkway, Suite 250
Alameda, California 94502-6577

Subject: Supplementary Site Characterization Report - Addendum

Dear Ms. Jakub:

I declare, under penalty of perjury, that the information and/or recommendations contained in the attached document or report is true and correct to the best of my knowledge.

Sincerely,


Jimmy Koo

Enclosure: Supplementary Site Characterization Report - Addendum

August 1, 2011

ICES 7016

ICES
Innovative & Creative
Environmental Solutions

Ms. Barbara Jakub
Hazardous Materials Specialist
Alameda County Environmental Health
1131 Harbor Bay Parkway, Suite 250
Alameda, California 94502-6577

Subject: Supplementary Site Characterization – Addendum I
Sunny Piedmont Cleaners
Oakland, California

Dear Barbara:

Please accept the attached revisions as Addendum I to the Supplementary Site Characterization Report dated August 6, 2010. The following revisions are included:

1. An angled boring was drilled using a sonic rig at boring B-3 to gain access to the groundwater beneath the dry cleaning machines within the building. Boring B-3 was located along the western perimeter of the building within the asphalt paved parking area, approximately 87 feet east of the dry cleaning machines (Figure 1).
2. Starting within the asphalt paved parking area (located approximately 87 feet east of the dry cleaning machines; shown as "Entry Point" on Figure 2) and using an angle of approximately 30 degrees (measured relative to the horizontal plane of the asphalt paved parking area), approximately 98 feet of drilling rods were advanced along the boring alignment. The boring was terminated at a total length of approximately 98 feet (or the equivalent of approximately 45 feet below the dry cleaning machines; shown as "Terminal Point" on Figure 2).
3. Soil samples were collected from boring B-3 at approximate 10-foot intervals measured along the boring alignment (or the equivalent of approximately 5-foot vertical intervals below the existing ground surface). The soil samples were screened using a PID. A grab groundwater sample was collected from the boring using a hydropunch.

Tel (510) 652-3222

Fax (510) 652-3555

3300 Powell Street
Suite #109
Emeryville, CA
94608

Page 2

Supplementary Site Characterization - Addendum I

Sunny Piedmont Cleaners

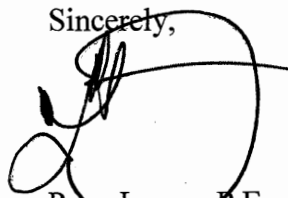
Oakland, California

August 1, 2011

4. Field screening of the soil samples collected from boring B-3 did not detect elevated concentrations of organic vapors when screened with the PID. Additionally, no odor or discoloration was observed in the soil samples collected.
5. Analysis of the soil sample collected at the soil/groundwater interface of boring B-3 indicated non-detectable concentrations of VOCs. VOC concentrations contained in the grab groundwater sample from boring B-3 were below their respective ESLs.
6. Based on the findings of the site characterization activities, the groundwater directly beneath the dry cleaning machines contained a non-detectable level of PCE that was below the ESL.
7. Based on the non-detectable concentration of PCE in the underlying groundwater and the low to non-detectable concentrations of PCE adjacent to the dry cleaning machines (boring B-1) and the sanitary sewer downgradient of the Site (boring B-2) it appears that the PCE that was encountered in boring HAB-2 at a depth of approximately 4 feet below the existing ground surface has not migrated laterally or vertically. A supplementary assessment and investigation in the vicinity of the sanitary sewer alignment will be conducted to assess the potential lateral migration of PCE.
8. A work plan to remove the PCE that was detected in boring HAB-2, evaluate the potential for vapor intrusion within the working space of the dry cleaning facility, and to conduct a conduit study/sampling will address your remaining concerns presented in your letter dated June 10, 2011.

If you have any questions or comments concerning this addendum, please contact Derek Wong or me.

Sincerely,



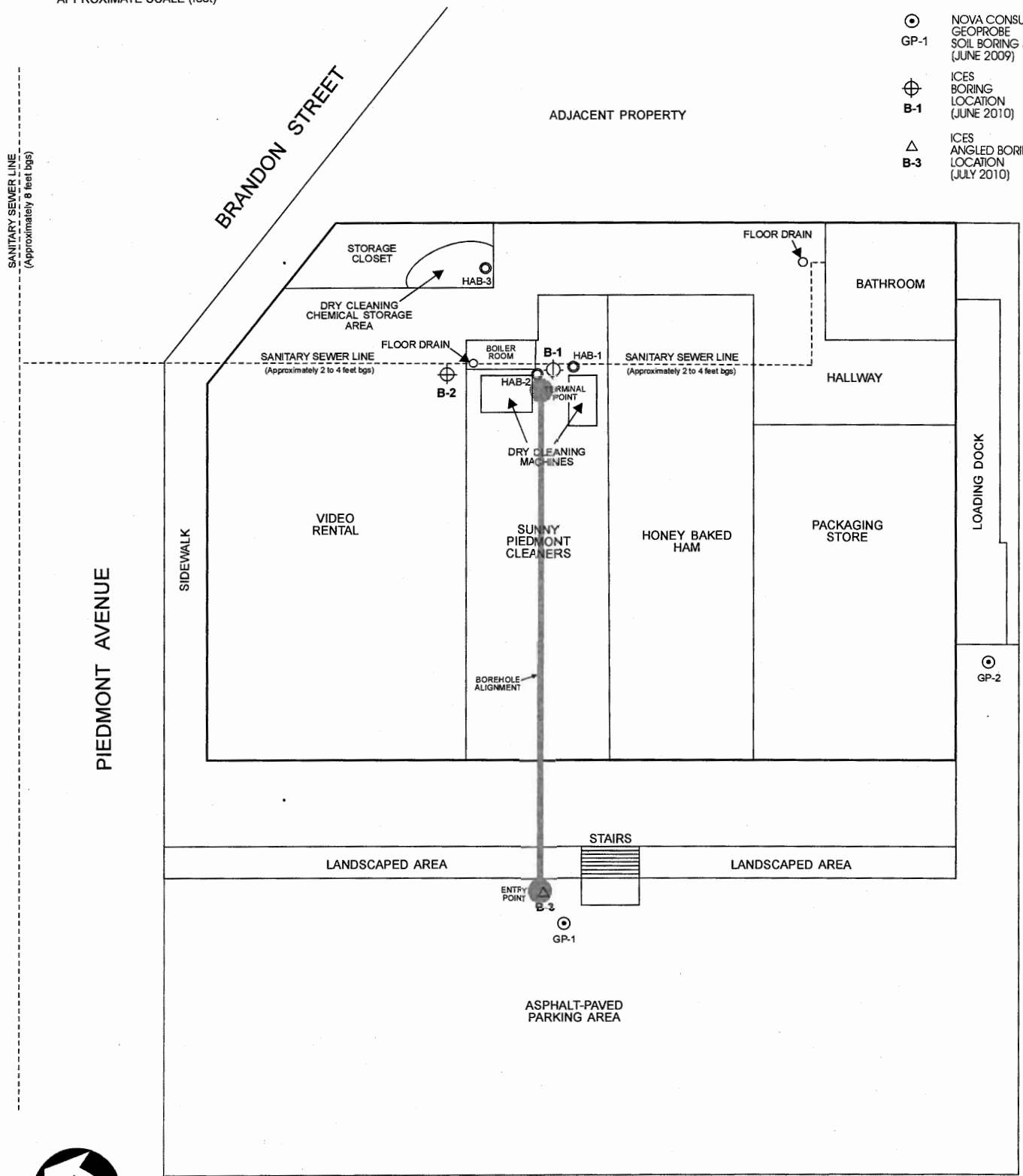
Peng Leong, P.E.
Principal Engineer



cc: Mr. Jimmy Koo, Sunny Piedmont Cleaners

0 25
 APPROXIMATE SCALE (feet)

- EXPLANATION:**
- NOVA CONSULTING HAND AUGER SOIL BORING LOCATION (JUNE 2009)
 - ⊙ NOVA CONSULTING GEOPROBE SOIL BORING LOCATION (JUNE 2009)
 - ⊕ ICES BORING LOCATION (JUNE 2010)
 - △ ICES ANGLED BORING LOCATION (JULY 2010)



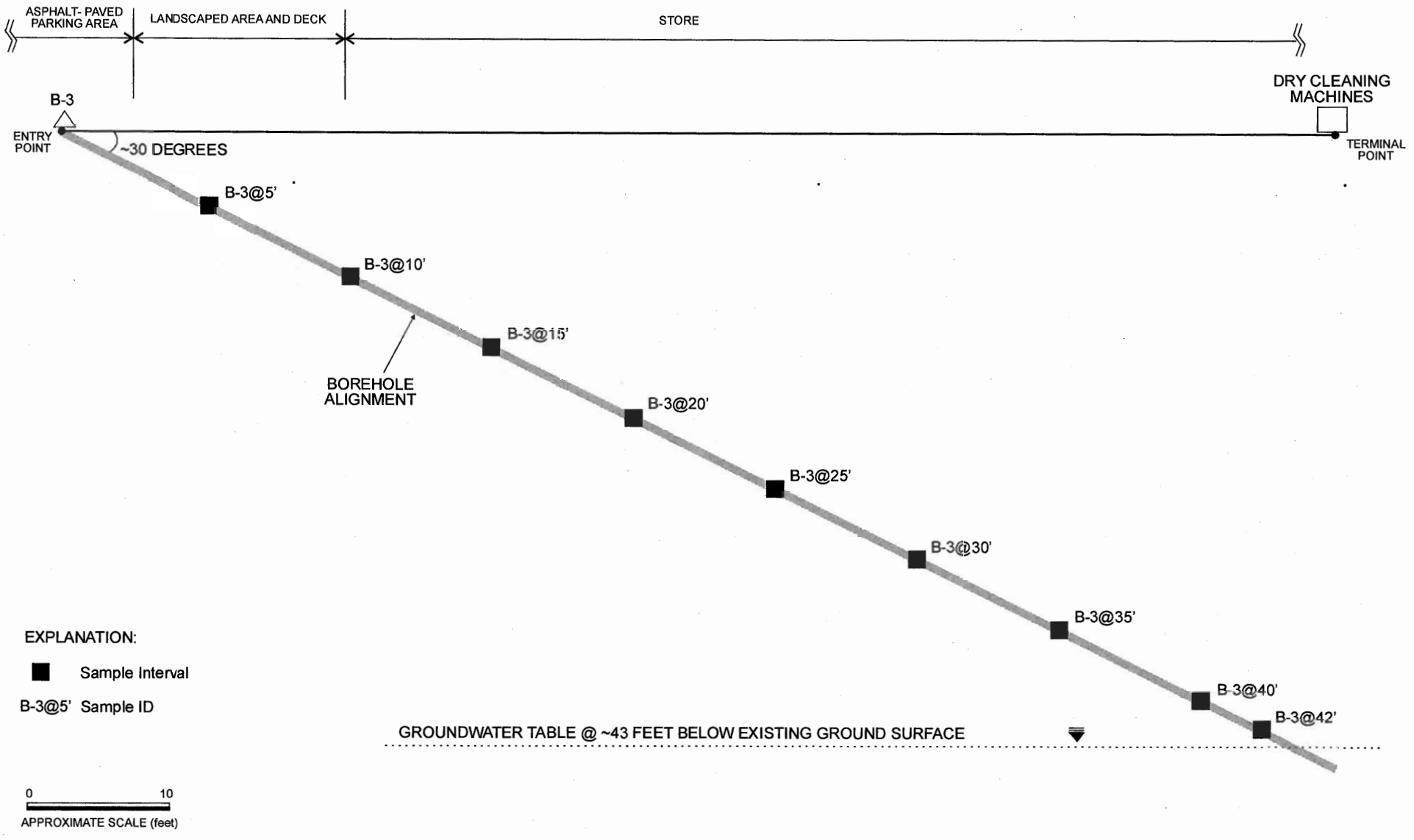
August 2011



SITE PLAN
 Sunny Piedmont Cleaners
 Oakland, California

Figure **1**

Project 7016



August 2011

BORING B-3 PROFILE

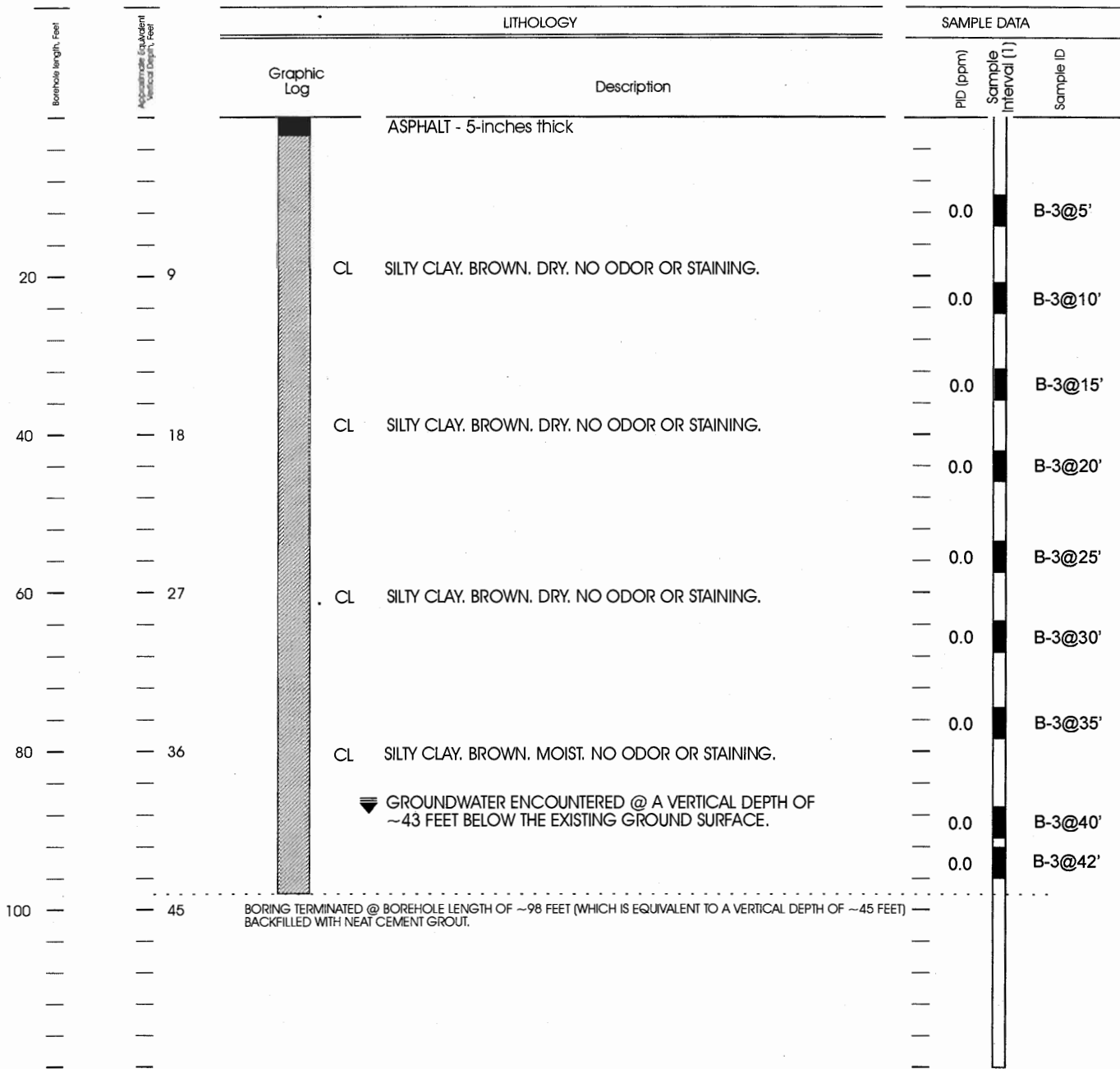
Sunny Piedmont Cleaners
 Oakland, California

Figure 2

Project 7016



BORING LOG



Date Drilled: 7-23-2010
 Driller: RSI Drilling
 Drilling Method: Sonic
 Boring Angle (2): 30 Degrees
 Logged By: Derek Wong
 Checked By: Peng Leong, PE, #C039707

Notes:
 1. Sample intervals were measured along the alignment of the borehole.
 2. Boring angle was measured relative to the horizontal plane of the existing asphalt paved parking area.



**FIELD AND LITHOLOGIC LOG
 FOR SOIL BORING B-3**
 Sunny Piedmont Cleaners, Oakland, California

Project 7016