











Public Land

-  CITY FACILITY
-  FIRE STATION
-  HOSPITAL
-  LIBRARY
-  OPEN SPACE
-  PARKING
-  RESOLUTION
-  SCHOOL

Orthophoto (3in, 1997)



John A. Camp
Environmental Protection Specialist

Environmental Services Division
 Civic Center • 835 East 14th Street
 San Leandro, California 94577

Phone: 510-577-6029
 Fax: 510-577-6019
 E-Mail: jcamp@ci.san-leandro.ca.us
 Web Site: www.ci.san-leandro.ca.us

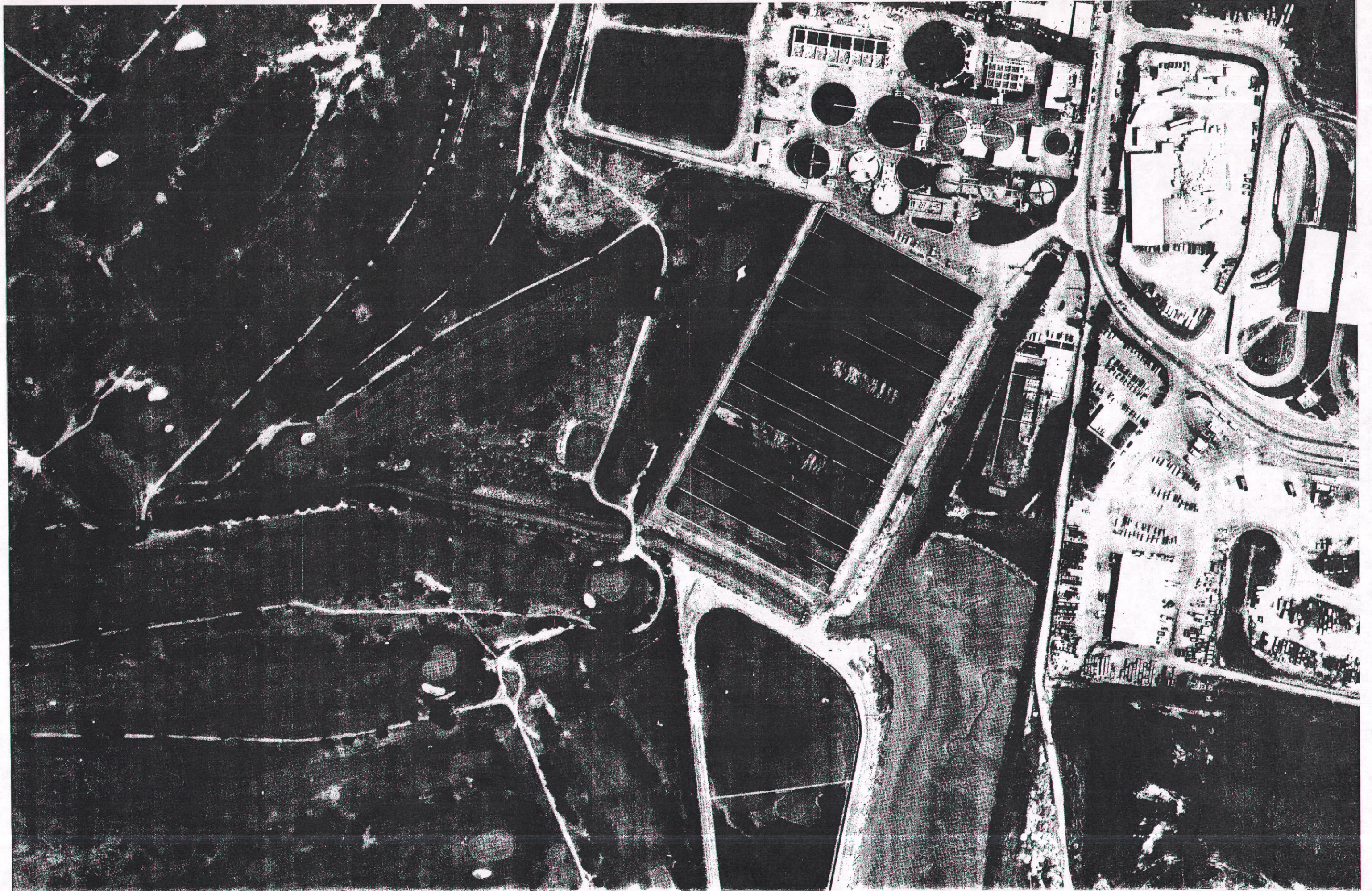
Proud Of Our Past,
 Looking To The Future

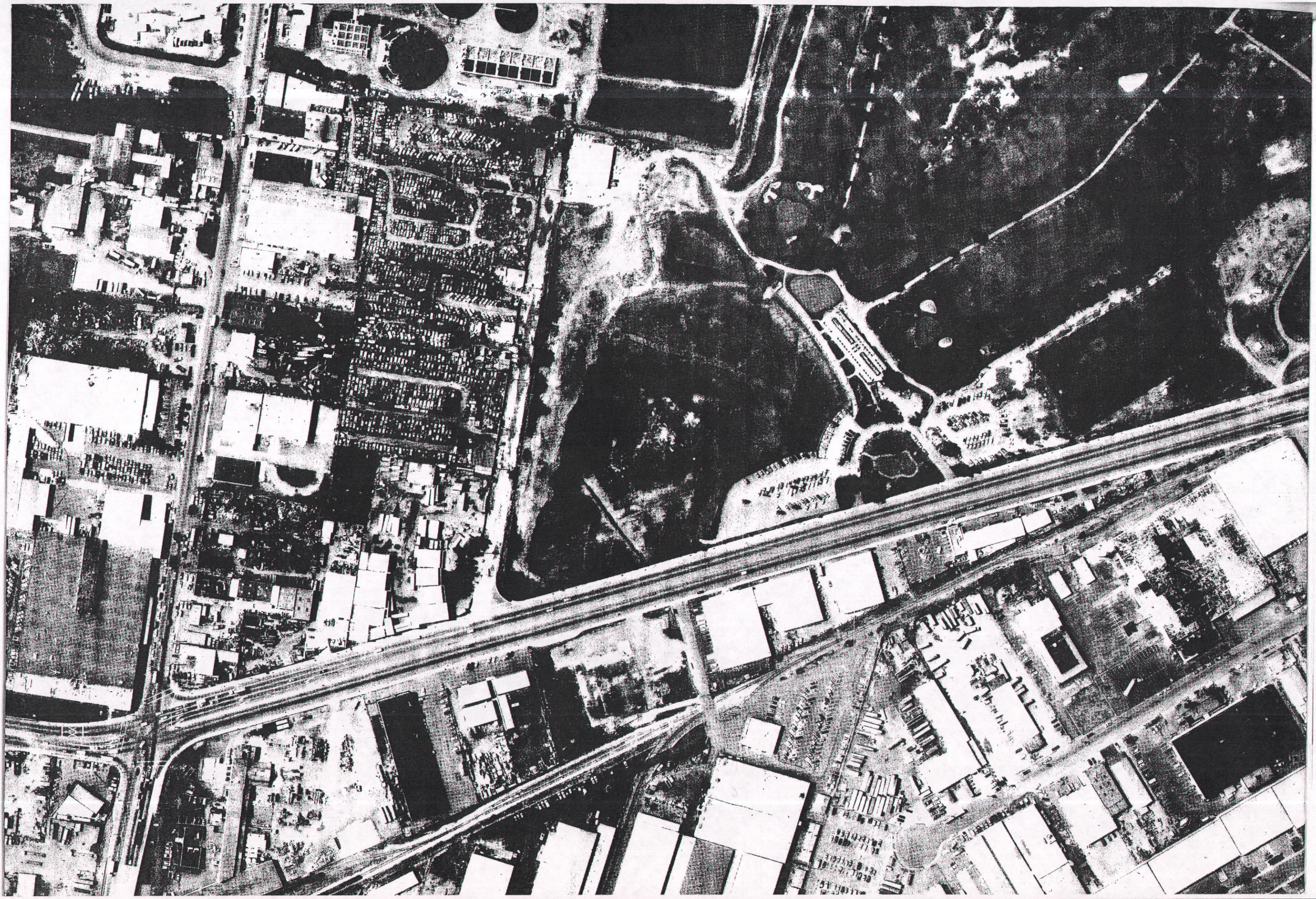


Aprox Location Former Sanchez Trucking UST removed 1990

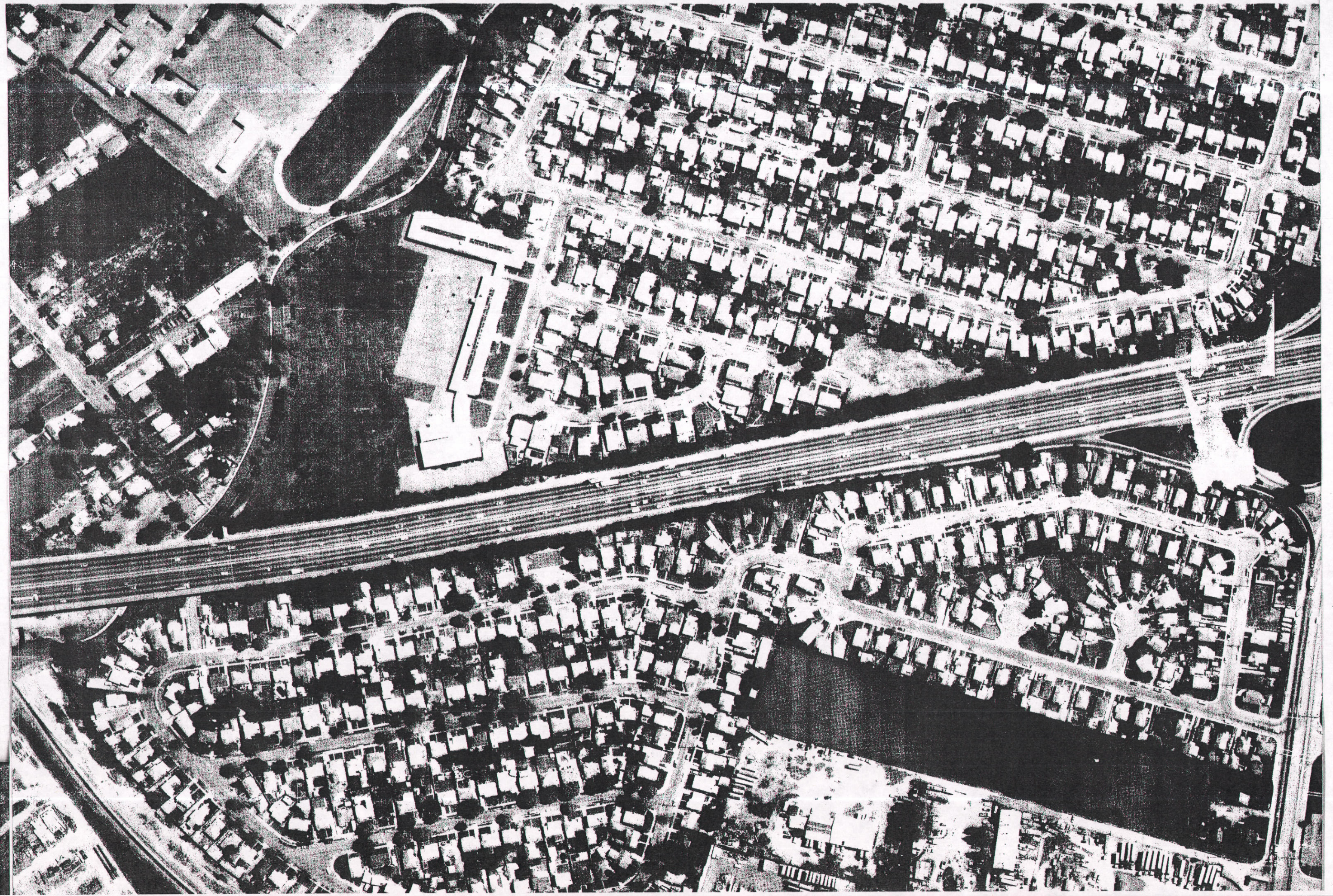
Scale 1:447
 City of San Leandro GIS
 Printed: Aug 10, 2009 12:06:41 PM

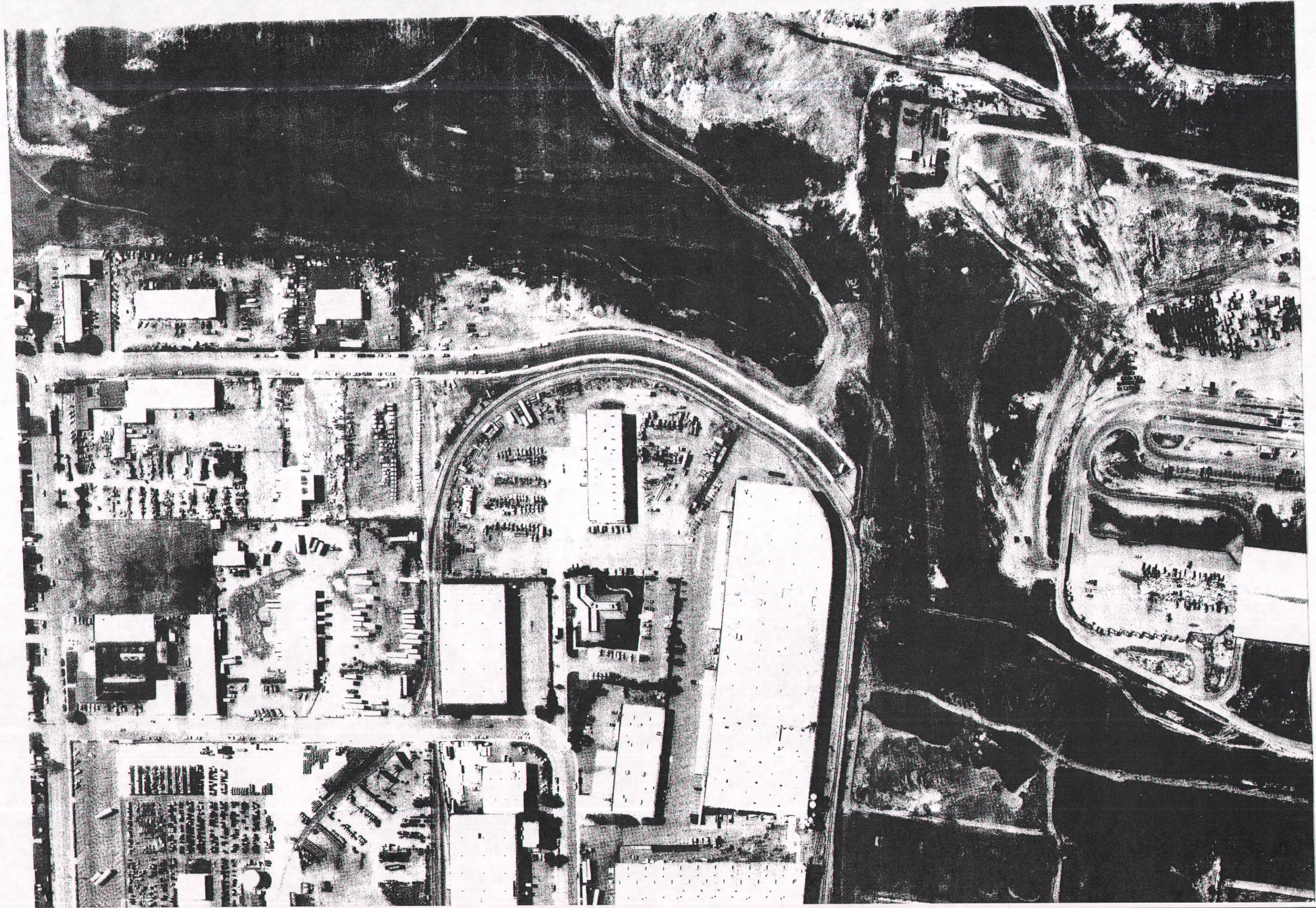


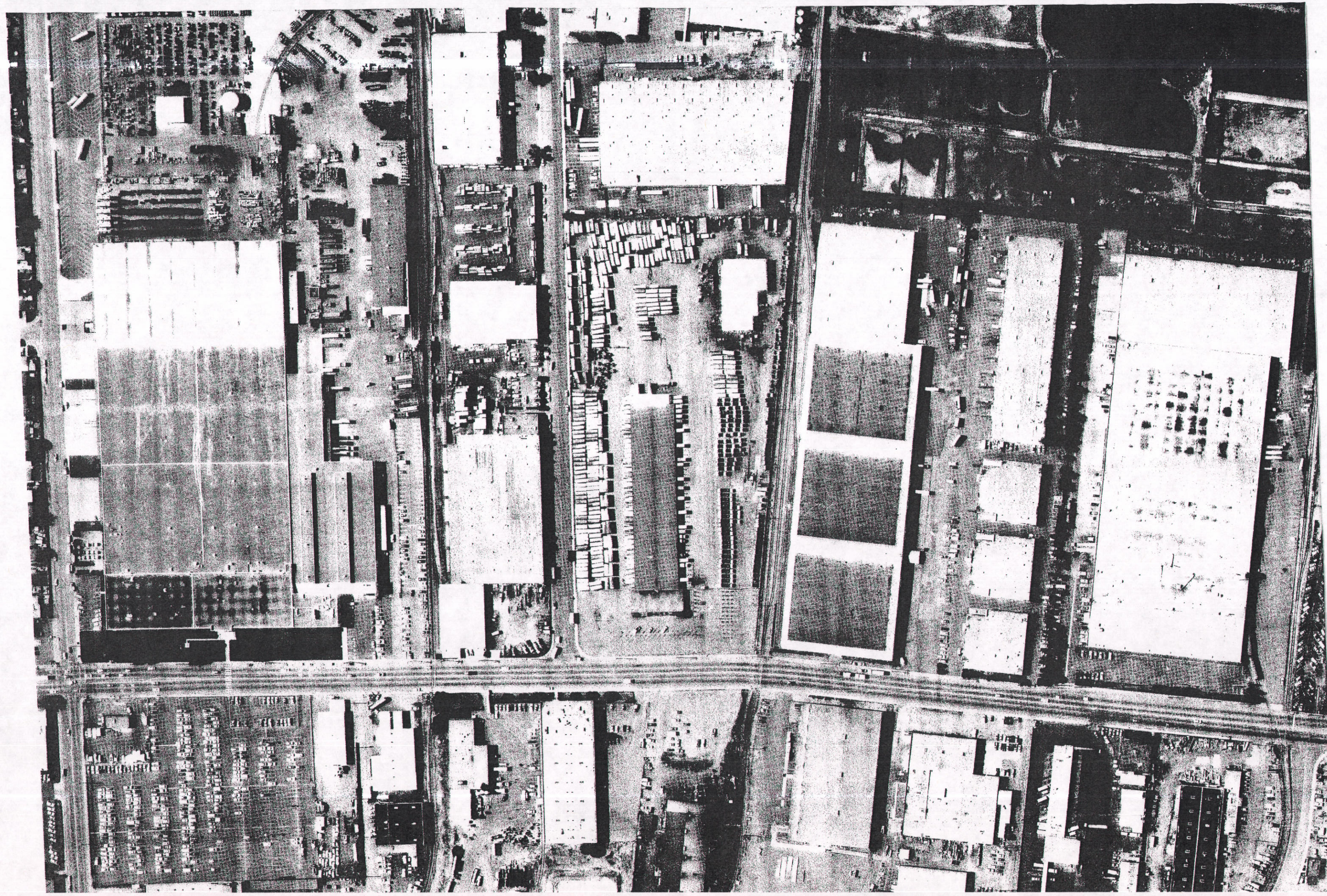


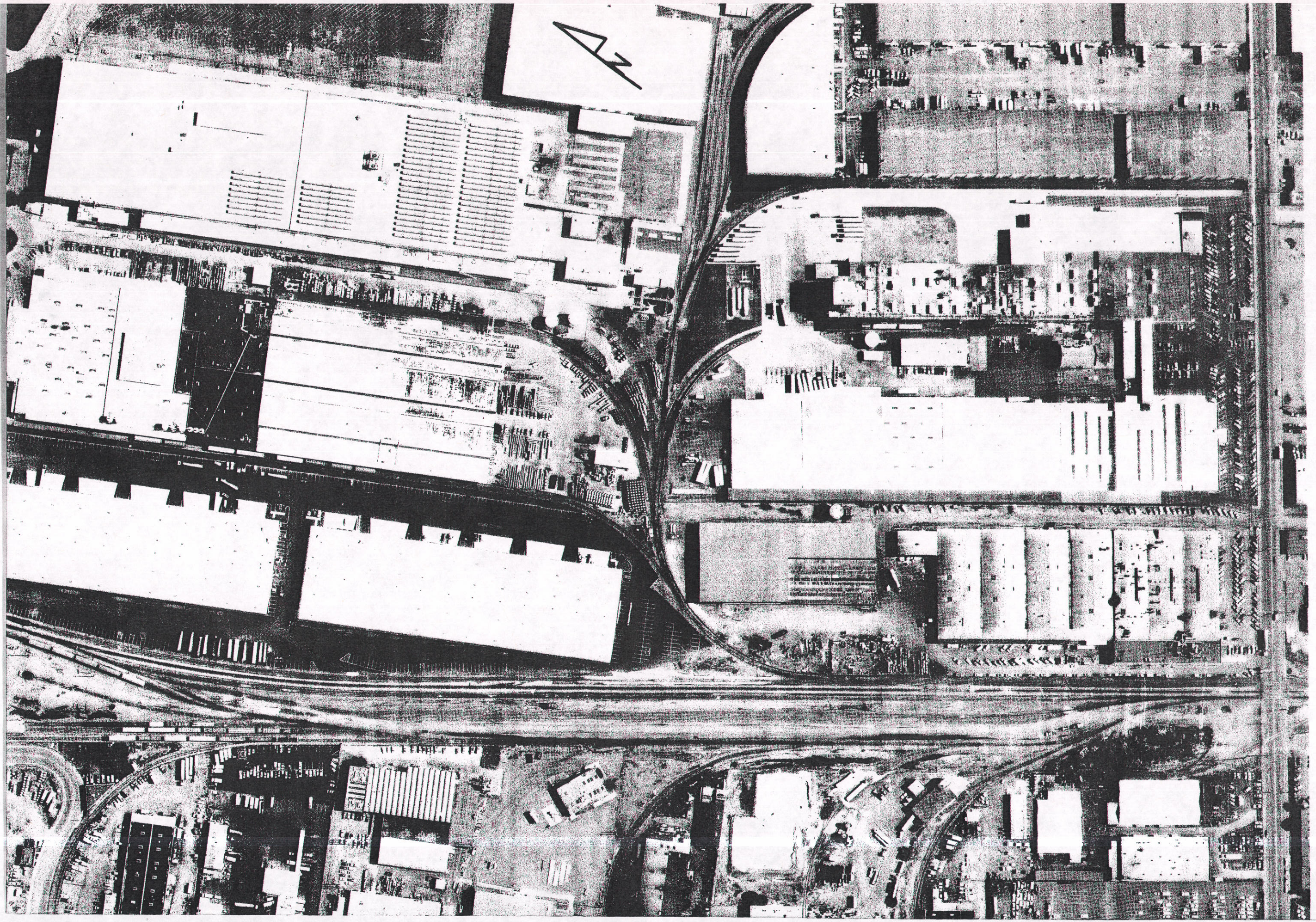


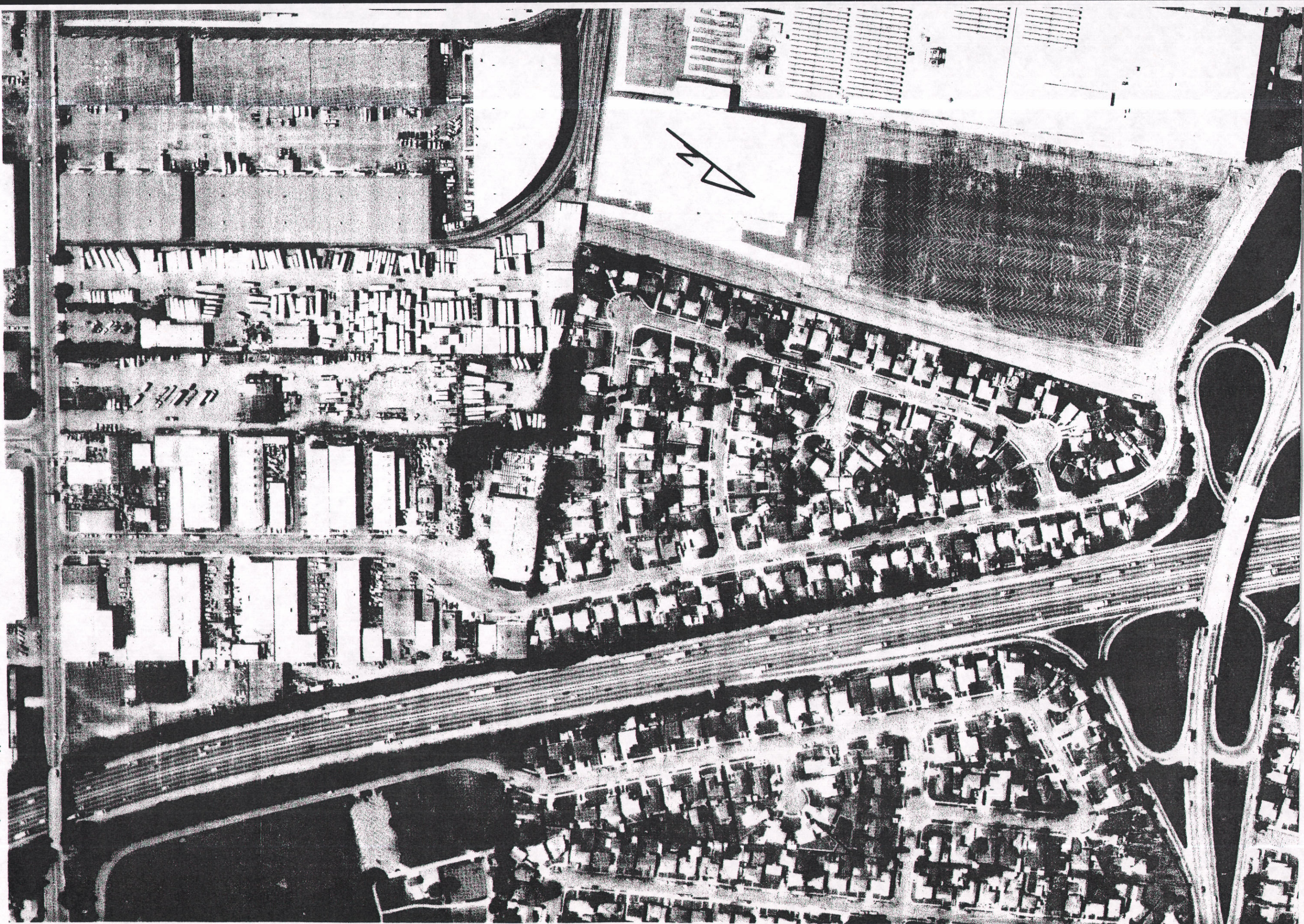












SCALE: 1" = 200'
FLOWN: 3-20-86

14 B
TYPE A