



ENVIRONMENTAL HEALTH SERVICES
ENVIRONMENTAL PROTECTION
1131 Harbor Bay Parkway, Suite 250
Alameda, CA 94502-6577
(510) 567-6700
FAX (510) 337-9335

**NOTIFICATION OF POTENTIAL CASE CLOSURE
SHELL
June 18, 2013**

**Site Location: 4895 Hacienda Drive, Dublin, CA 94568
Fuel Leak Case RO0002985 and GeoTracker Global ID T10000000423**

Summary – This fact sheet has been prepared to inform community members and other interested parties of potential case closure for a fuel leak case at the Shell-branded service station located at 4895 Hacienda Drive in Dublin, California (see attached map on back). The station is equipped with a station building, dispenser islands and associated canopy, and car wash. The property has been occupied by a gasoline stations since approximately 1998.

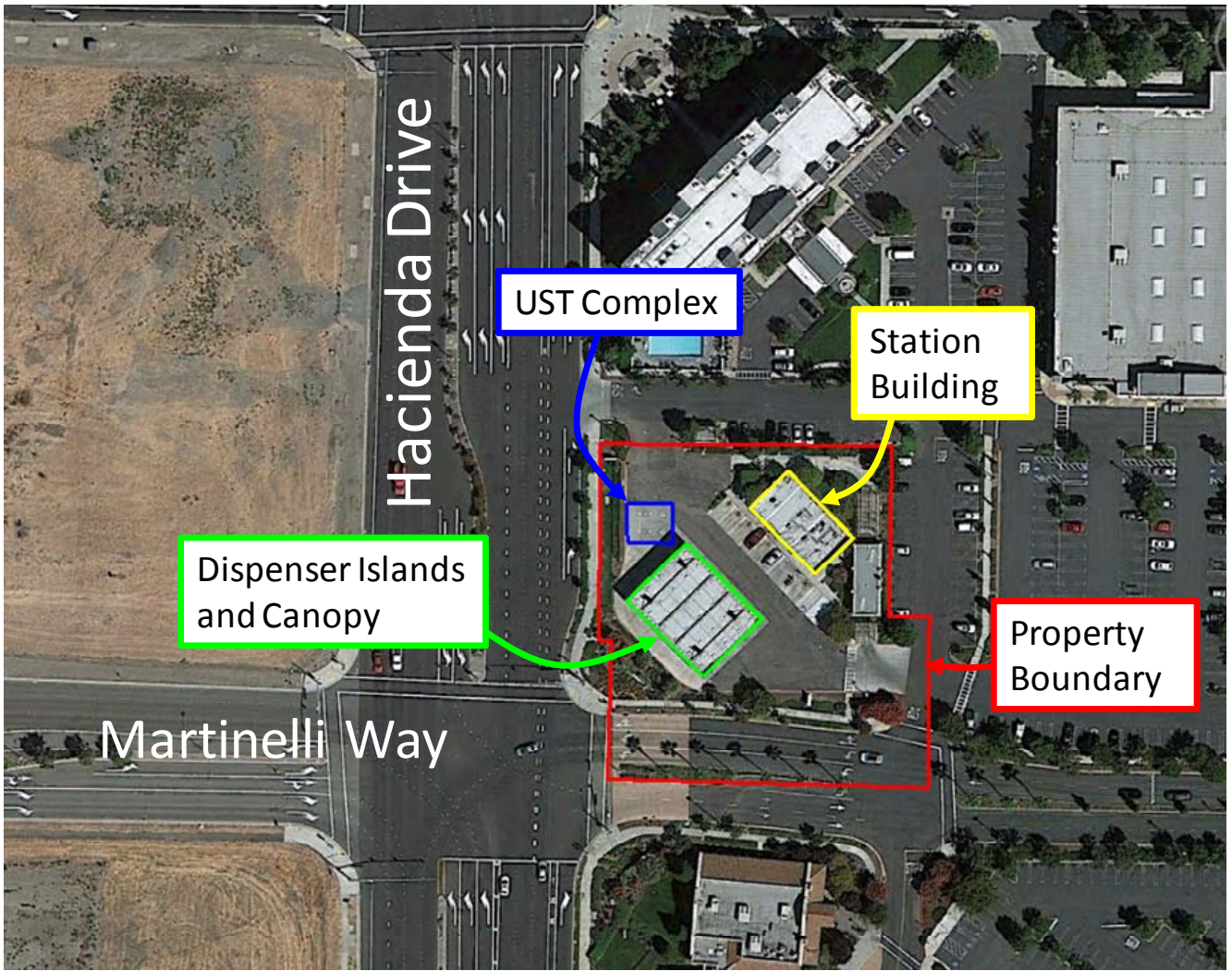
As part of a due diligence assessment, four exploratory borings were advanced onsite to collect soil and grab groundwater samples in August 2008. Soil onsite was found to contain 39 parts per million Total Petroleum Hydrocarbons as diesel (TPHd) and 0.026 ppm methyl tert-butyl ether (MTBE). The groundwater samples collected during the event contained 320 parts per billion (ppb) Total Petroleum Hydrocarbons as gasoline (TPHg) and 370 ppb MTBE.

Due to the groundwater concentrations of TPHg and MTBE detected above their respective Environmental Screening Levels (ESLs), further investigation at the site was warranted. Subsequent investigations have included the installation of monitoring wells and exploratory borings advanced both onsite and offsite.

Results of site investigations indicate that a plume of TPHd, TPHg, and MTBE extends from the site to approximately 400 feet south (downgradient). No water supply wells have been identified within 1,000 feet of the site. The plume and residual petroleum hydrocarbons in soil are expected to biodegrade over time. Site investigation and cleanup activities have been completed and it does not appear that the fuel release presents a risk to human health for nearby residents or site workers. Therefore, ACEH is considering potential closure of the fuel leak case.

Next Step – The public is invited to review and comment on the potential closure of the fuel leak case. The entire case file can be viewed over the Internet on the ACEH website (<http://www.acgov.org/aceh/lop/ust.htm>) or the State of California Water Resources Control Board GeoTracker website (<http://geotracker.swrcb.ca.gov>). Please send written comments to Jerry Wickham at the address below; all comments will be forwarded to the responsible parties. **Comments received by July 26, 2013** will be considered and responded to prior to a final determination on the proposed case closure.

Additional information: Contact Jerry Wickham of the Alameda County Department of Environmental Health, 1131 Harbor Bay Parkway, Alameda, CA 94502 at 510-567-6791 or by email at jerry.wickham@acgov.org



Aerial View of Property (Google, 2013)