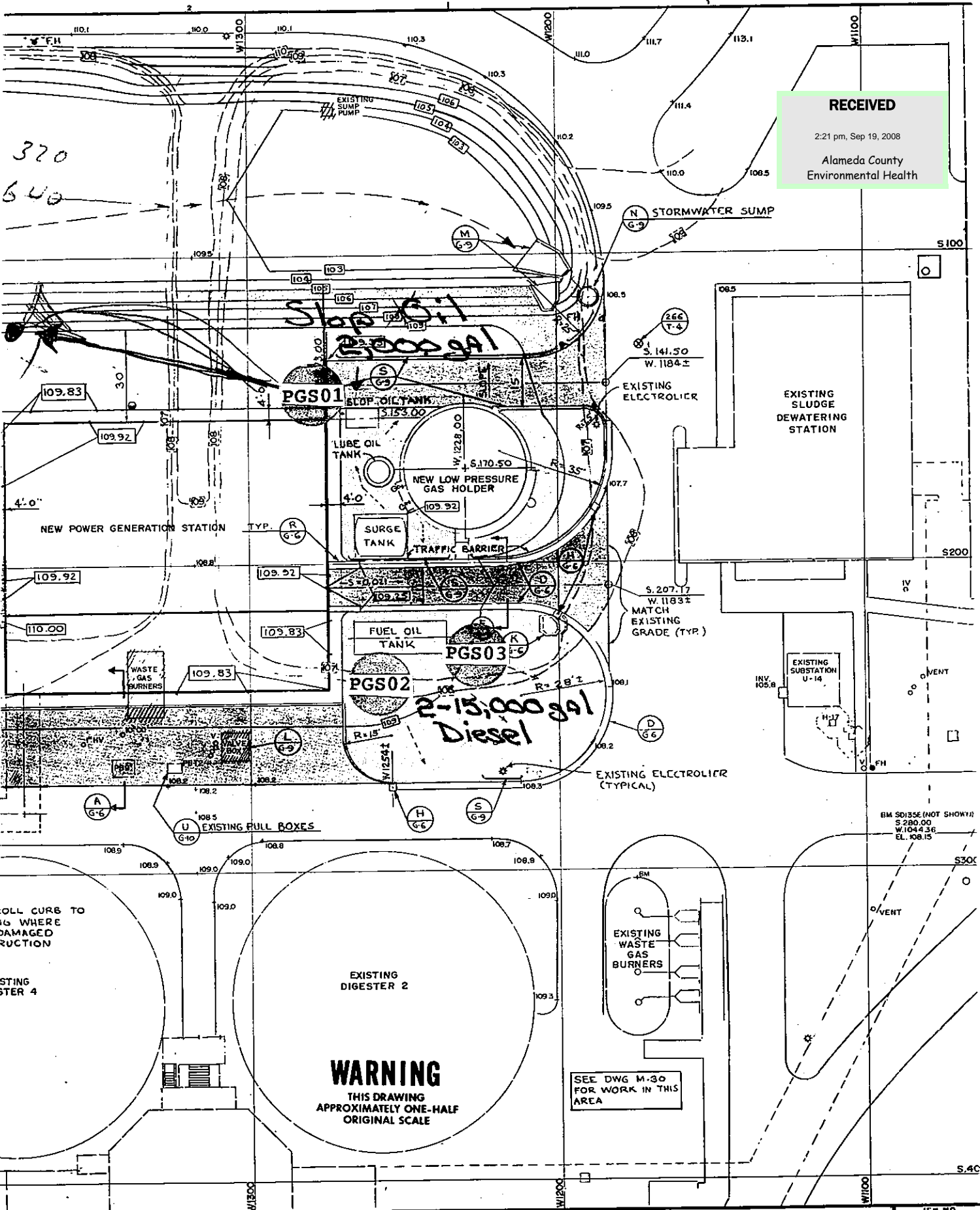


RECEIVED

2:21 pm, Sep 19, 2008

Alameda County
Environmental Health



LLO ENGINEERS
 FOUNTAIN VALLEY CALIFORNIA VISALIA CALIFORNIA

GAIL P. LYNCH, P.E.
 WALTER R. HOWARD, P.E.
 J. DAVID GRIFFITH, P.E.
 G. WILLIAM KROFF, P.E.

EAST BAY MUNICIPAL UTILITY DISTRICT



WATER POLLUTION CONTROL PLANT

**POWER GENERATION STATION
 SPECIFICATION NO. 9D135**

GENERAL

PAVING, GRADING AND DRAINAGE PLAN

JOB NO.
W 02401A12

DRAWING NO.
JC-G-5

SHEET NO.
5 of 106