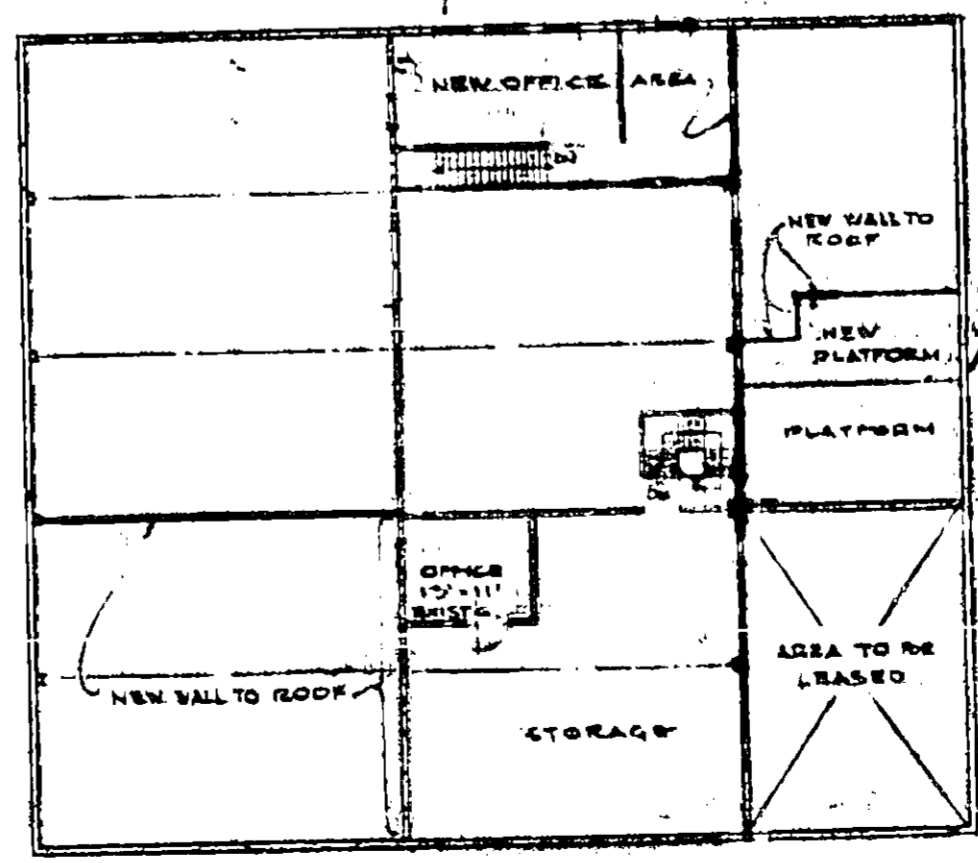


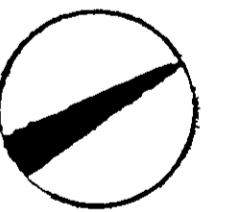
BRUSH ST.

SECOND ST.



NOTE: IN ADDITION TO SPECIFICATIONS DIVISION 2, SECT. 2.2.1, CONTRACTOR SHALL REMOVE EXISTING CURB & GUTTER (EAVNT) ON FORMER 2ND STREET AND REGRADE AND CONSTRUCT AREA B TO GRADES SHOWN ON THIS SHEET AND ALSO INSTALL TEMPORARY DRIVEWAY RAMP MARKED THUS

0.00 - EXISTING GRADE  
 0.00 - NEW GRADE



REFERENCE PLANS

FIELD BOOKS 110

NOTE: ELEVATIONS SHOWN ARE CITY OF OAKLAND DATUM; ADD 6.20 TO OBTAIN PORT OF OAKLAND DATUM

NO.	REVISIONS	DATE

**PORT OF OAKLAND**  
 OAKLAND, CALIFORNIA

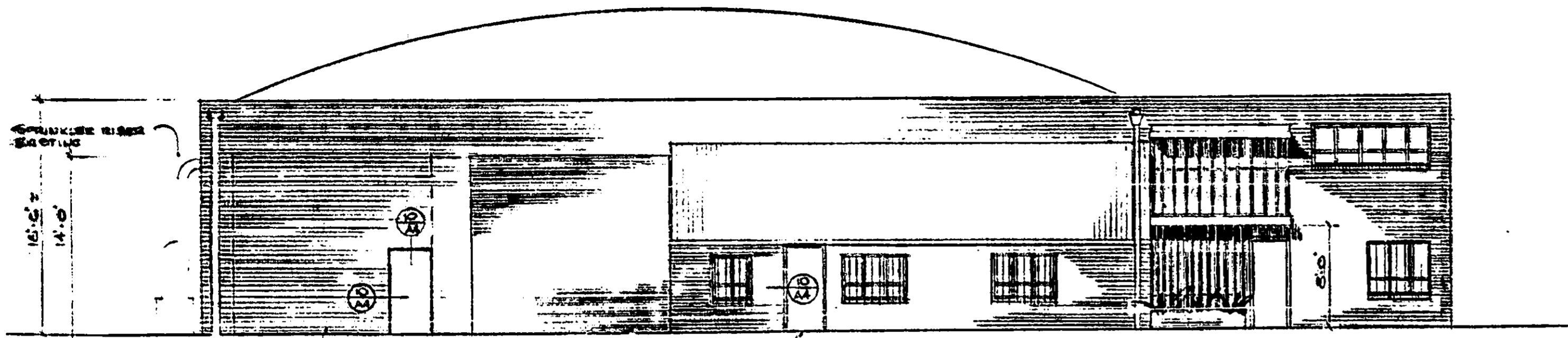
DEMOLITION, ALTERATION, CONSTRUCTION  
 OF BUILDINGS FOR  
**CORPORATION YARD**

SITE PLAN

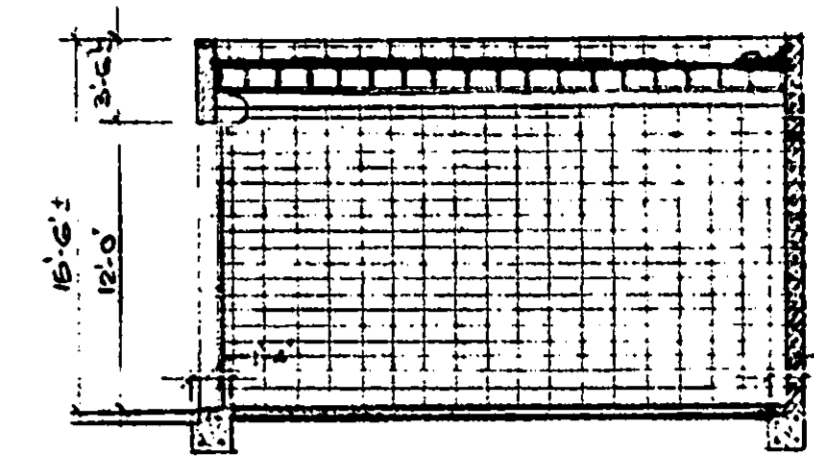
DATE 12-2-1970 FILE AA 1275  
 SCALE 1/8" = 1'-0"

CHIEF ENGINEER  
 ASST. CHIEF ENGINEER



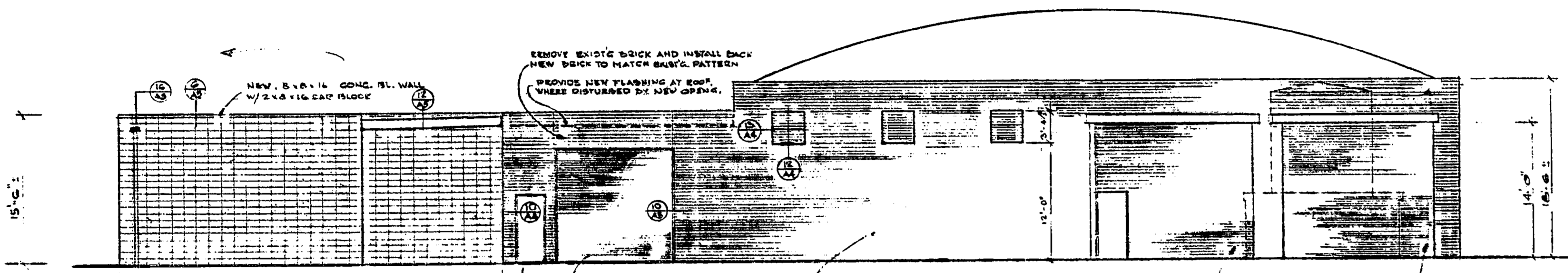


1 BRUSH ST. ELEVATION  
A3  
SCALE 1/8" = 1'-0"

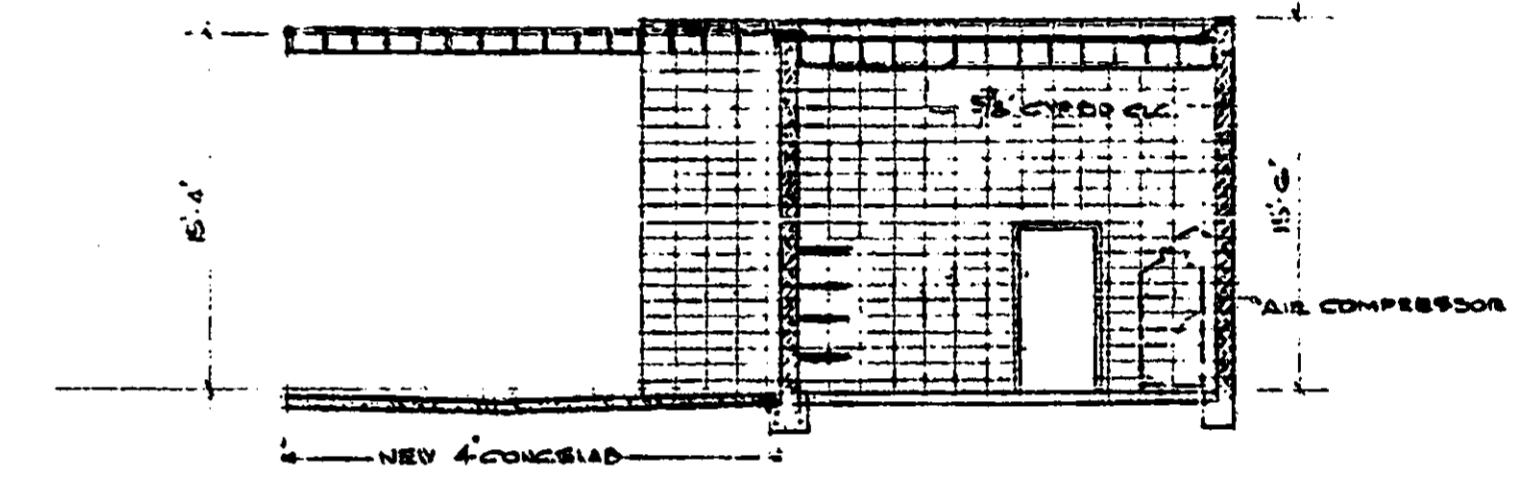


5 SECTION THRU GARAGE  
A3  
SCALE 1/8" = 1'-0"

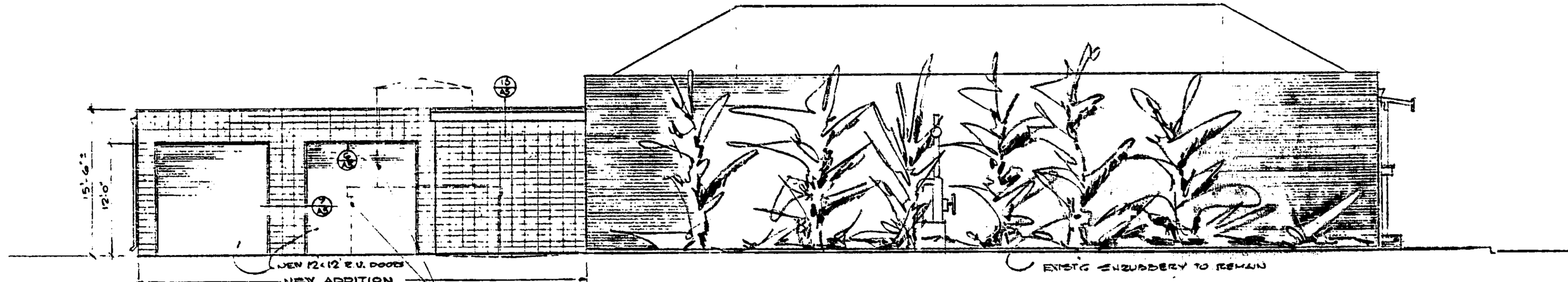
NOTE: HEIGHTS SHOWN HERE ARE FROM HIGHEST POINT OF EXISTING CONC. SLAB OF GARAGE FLOOR



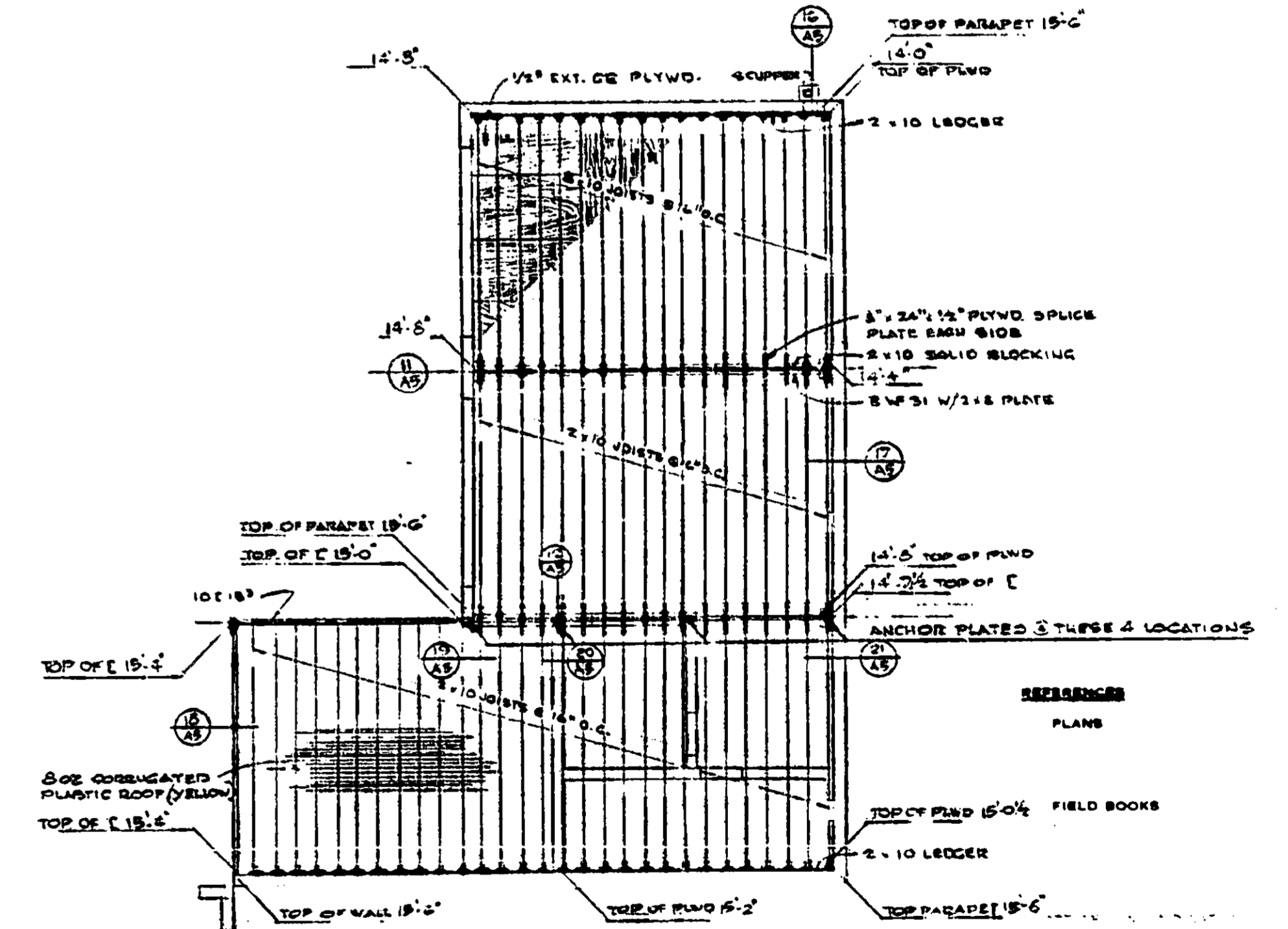
2 MARKET ST. ELEVATION  
A3  
SCALE 1/8" = 1'-0"



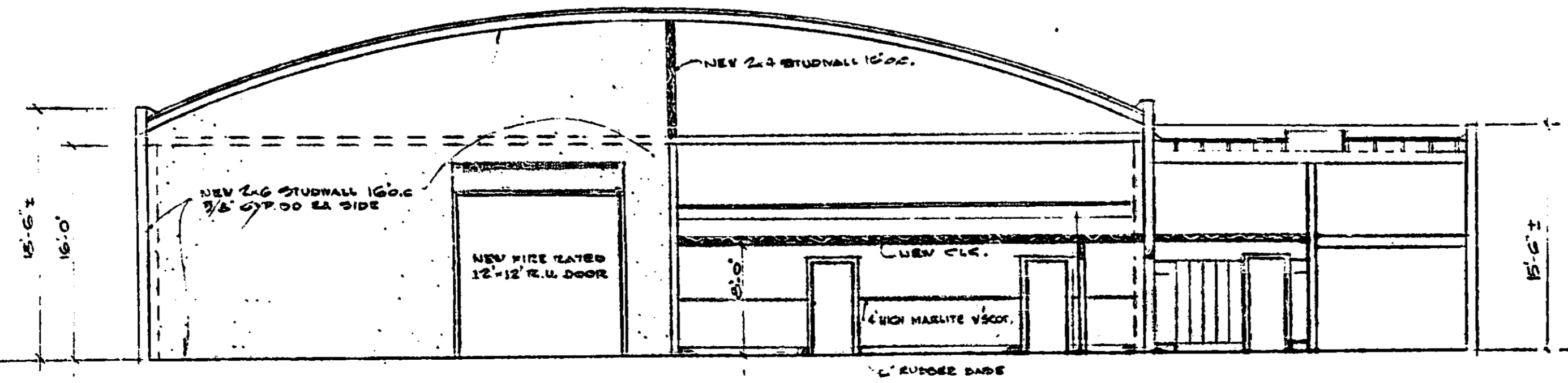
6 SECTION THRU WASH AREA & BATTERY RM.  
A3  
SCALE 1/8" = 1'-0"



3 ELEVATION FROM PARKING AREA  
A3  
SCALE 1/8" = 1'-0"



ROOF FRAMING PLAN  
SCALE 1/8" = 1'-0"



4 SECTION THRU MAIN BLDG.  
A  
SCALE 1/8" = 1'-0"

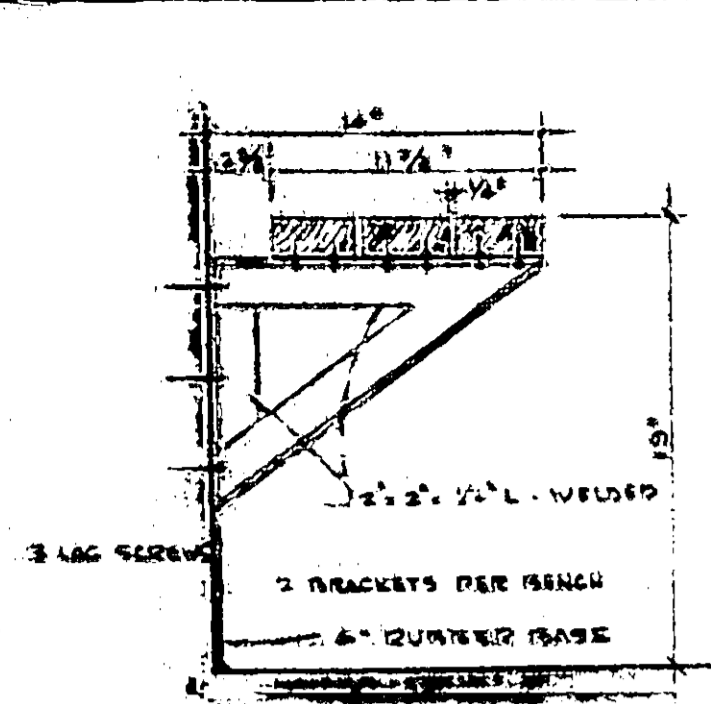
NO.	REVISIONS	DATE

DRAWN: *[Signature]*  
 CHECKED: *[Signature]*  
 RECOMMENDED: *[Signature]*  
 APPROVED: *[Signature]*  
 ASST. CHIEF ENGINEER

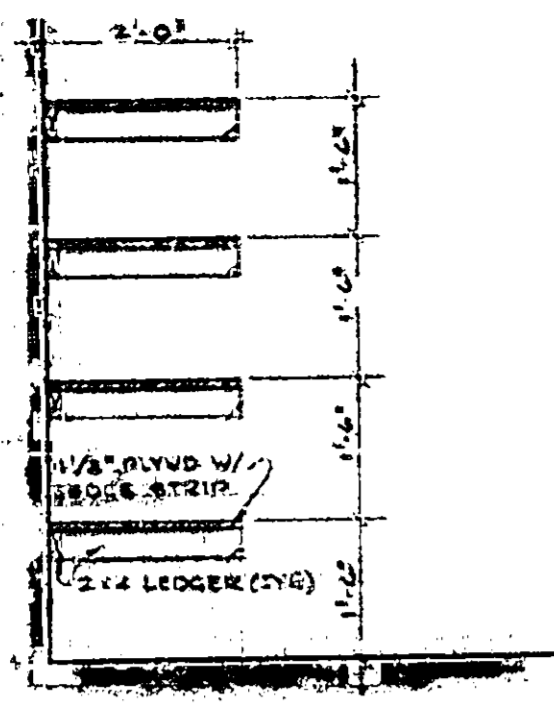
**PORT OF OAKLAND**  
 OAKLAND, CALIFORNIA  
 DEMOLITION, ALTERATION, CONSTRUCTION  
 OF BUILDINGS FOR  
 CORPORATION YARD  
 ELEVATIONS, SECTIONS, ROOF FRAM'G PLAN  
*[Signature]*  
 CHIEF ENGINEER

DATE: 12-2-70  
 FILE: AA 1275  
 SHEET: A3  
 OF 8 SHEETS

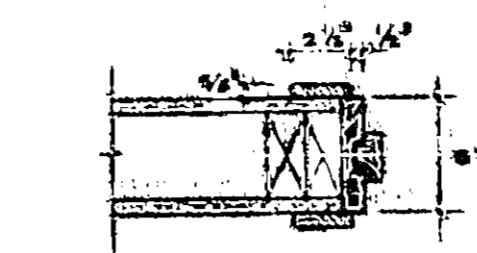
MICROFILMED MAY 13 1977



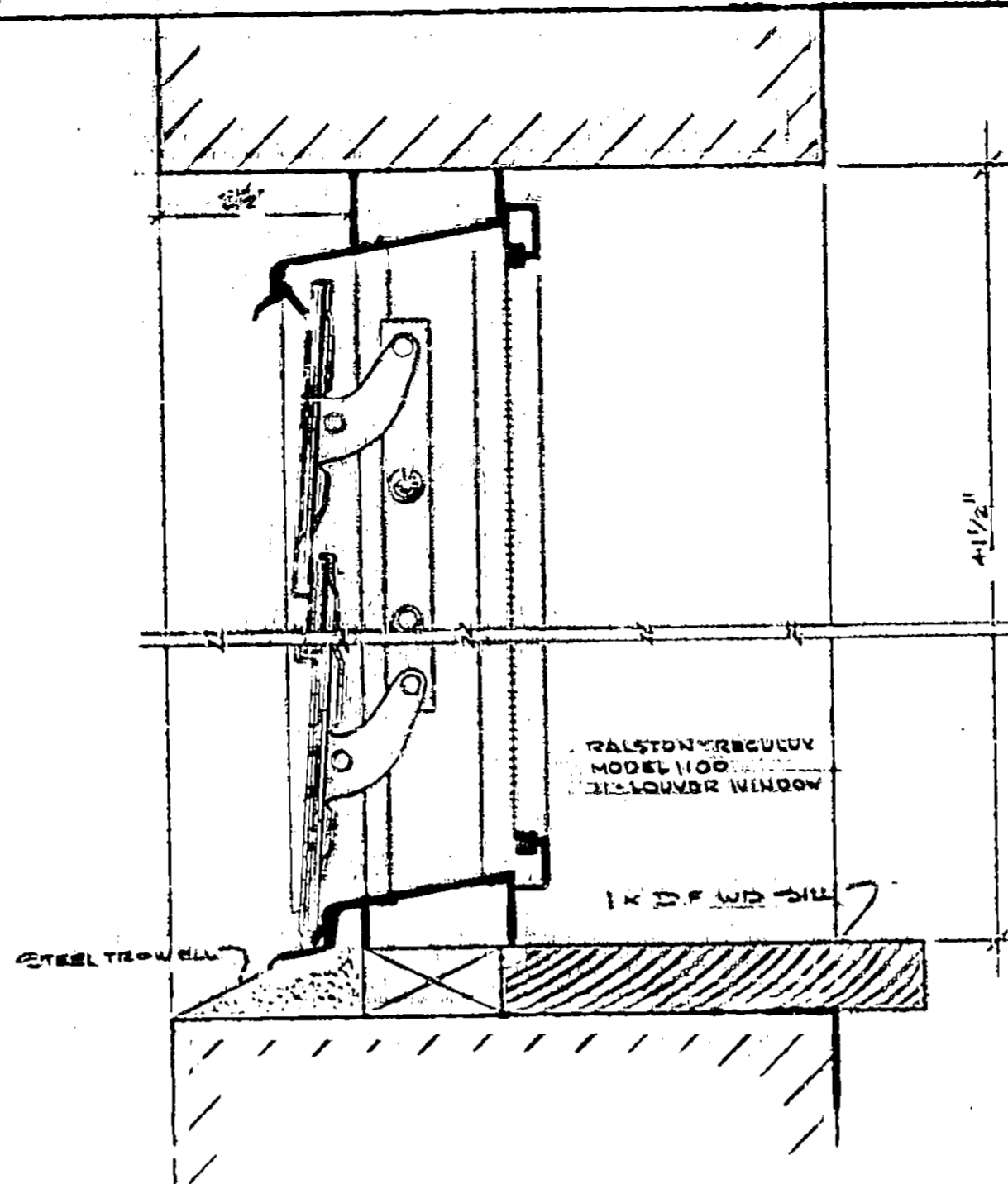
1 SECTION THRU BENCH RM 10  
SCALE: 1/2" = 1'-0"



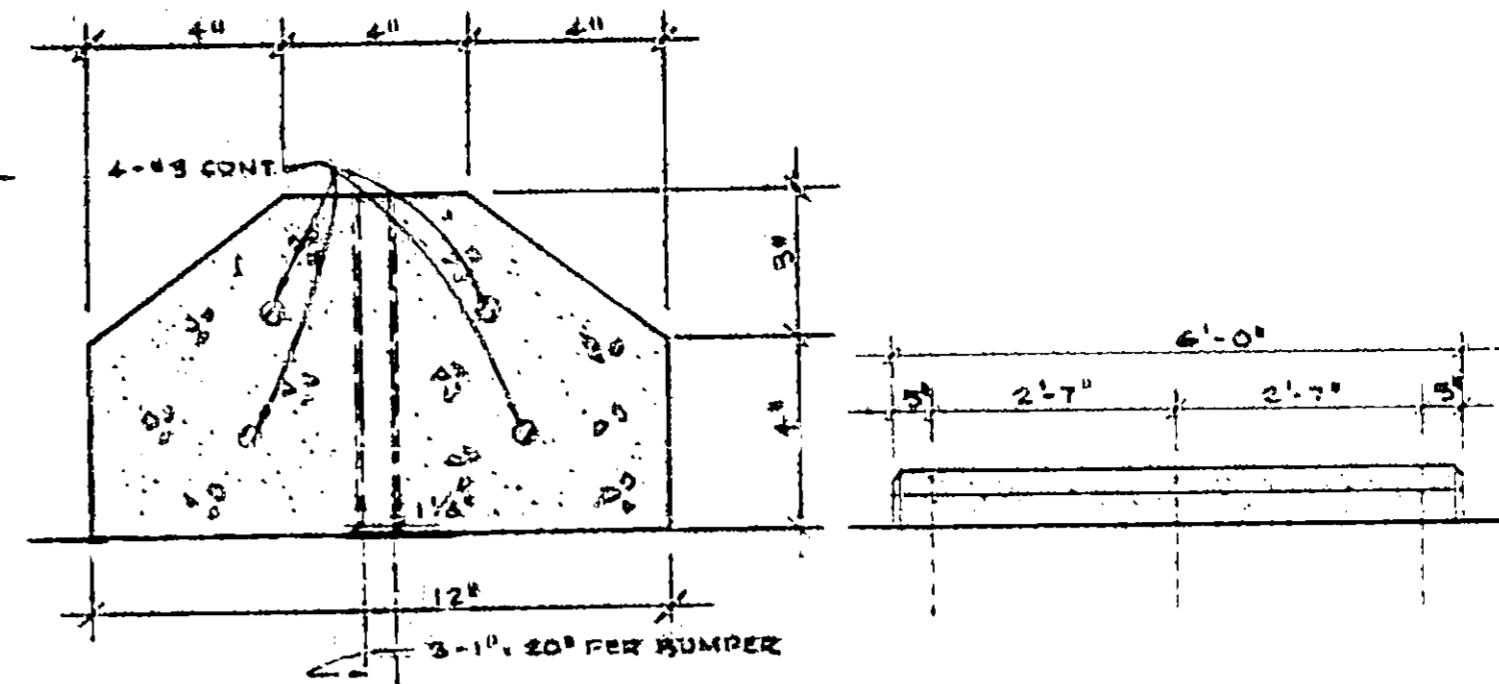
6 SECTION THRU SHELVING RM 23  
SCALE: 1/2" = 1'-0"



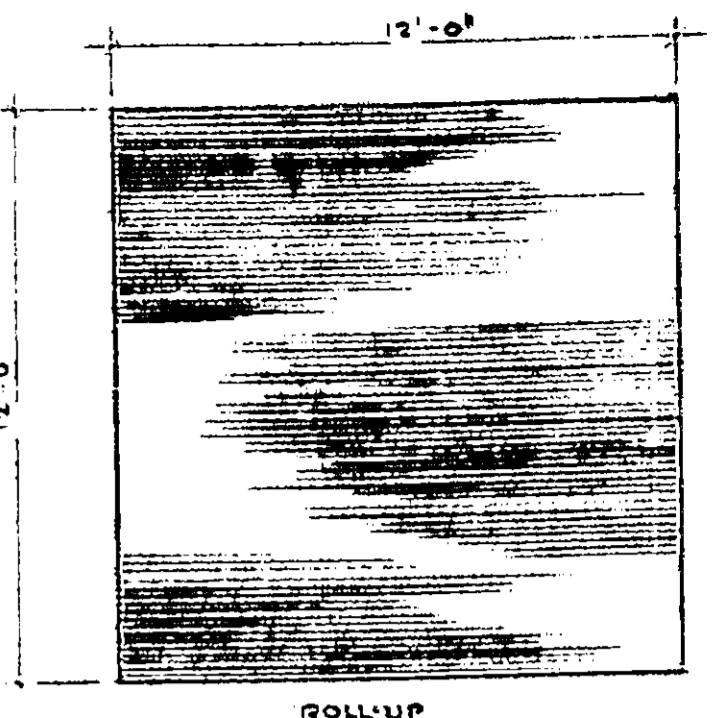
8 DOOR JAMB  
SCALE: 1/2" = 1'-0"



12 SECTION THRU HEAD & SILL  
SCALE: HALF SIZE

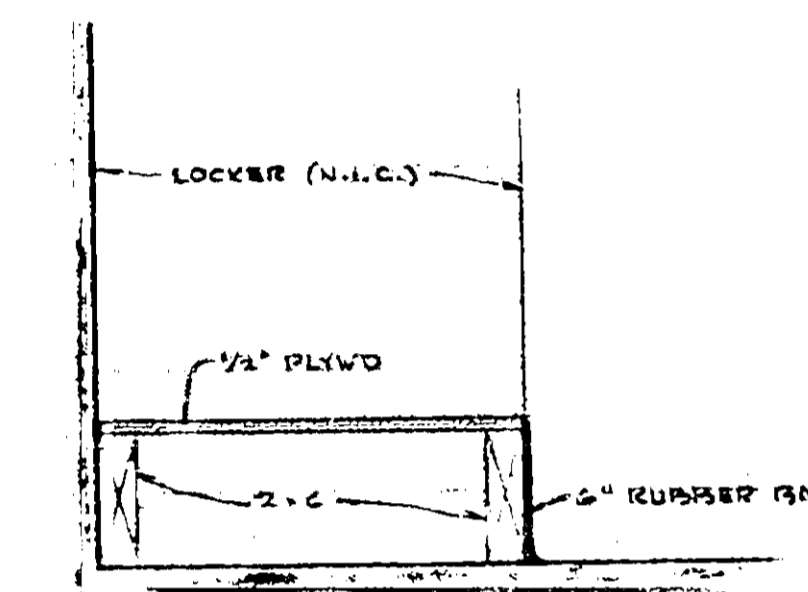
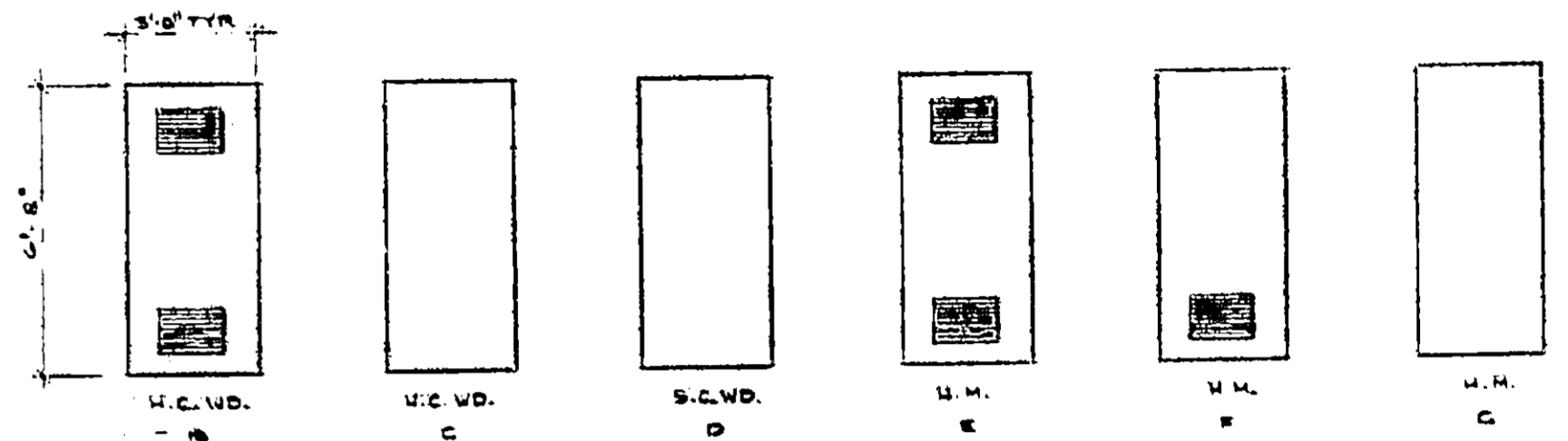


19 SECTION - TRUCK BUMPER  
SCALE: 3/4" = 1'-0"

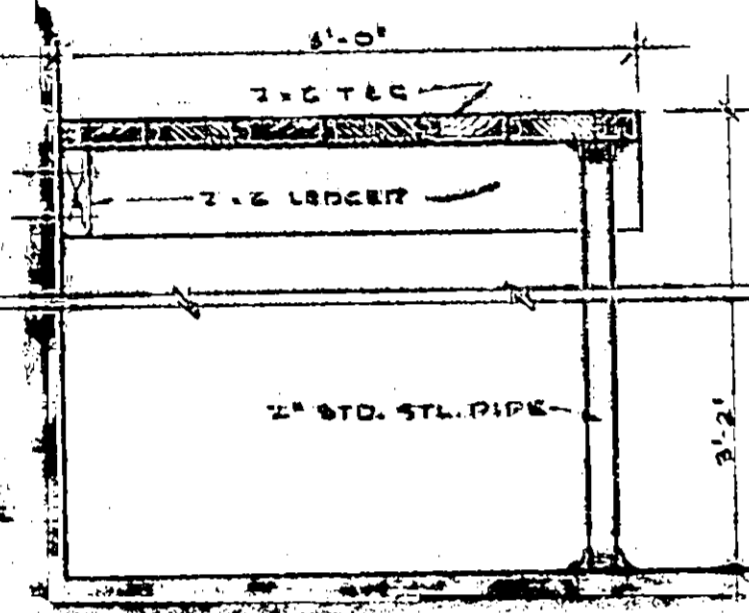


ROLLUP

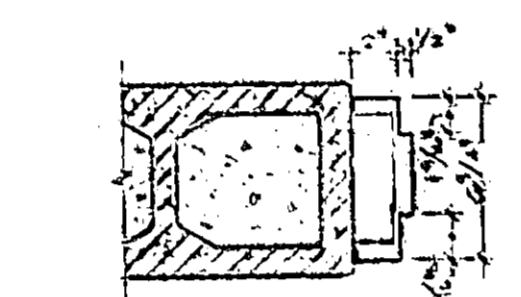
ELEVATION  
SCALE: 1/2" = 1'-0"



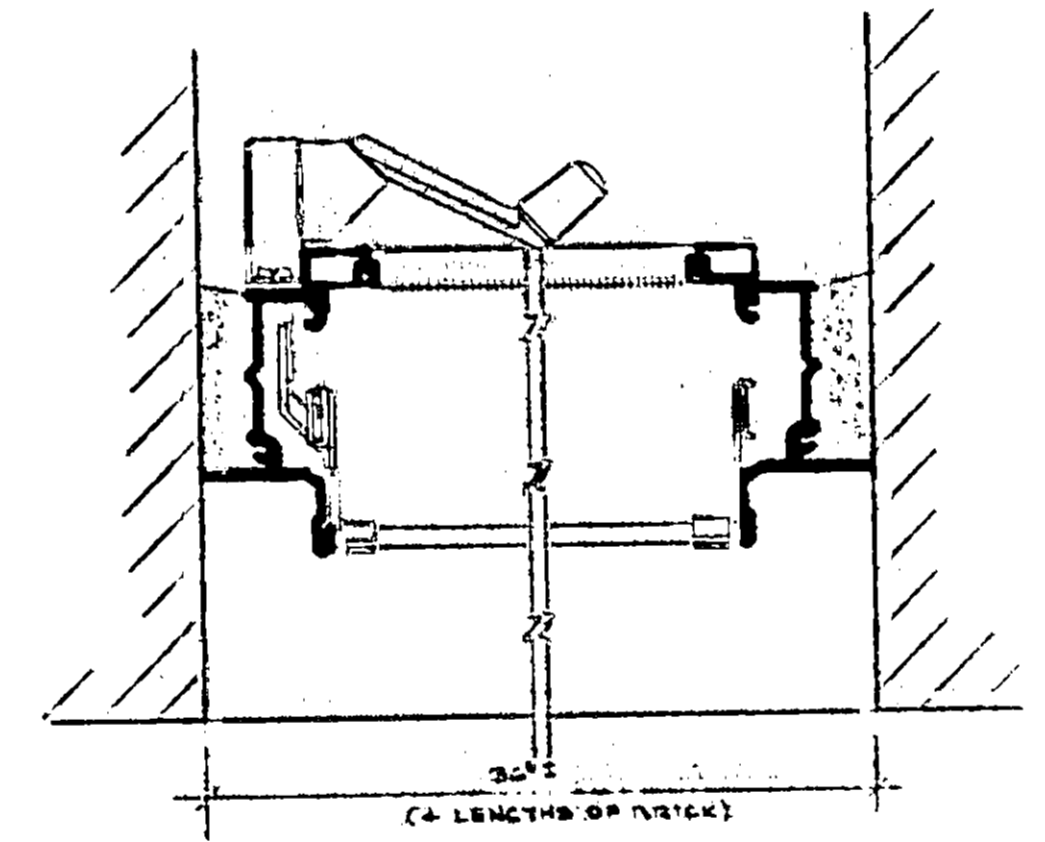
2 SECTION OF LOCKER BASE RM 5  
SCALE: 1/2" = 1'-0"



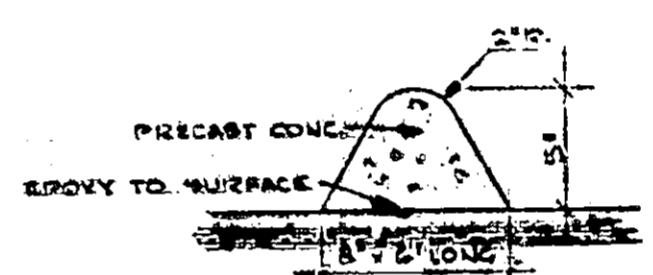
7 SECTION THRU WORK BENCH IN RM 16  
SCALE: 1/2" = 1'-0"



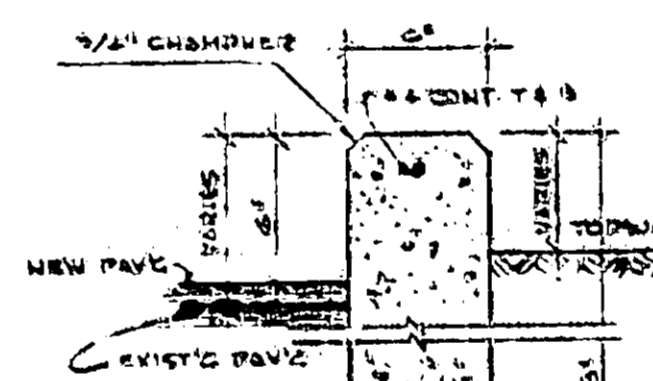
9 DOOR JAMB  
SCALE: 1/2" = 1'-0"



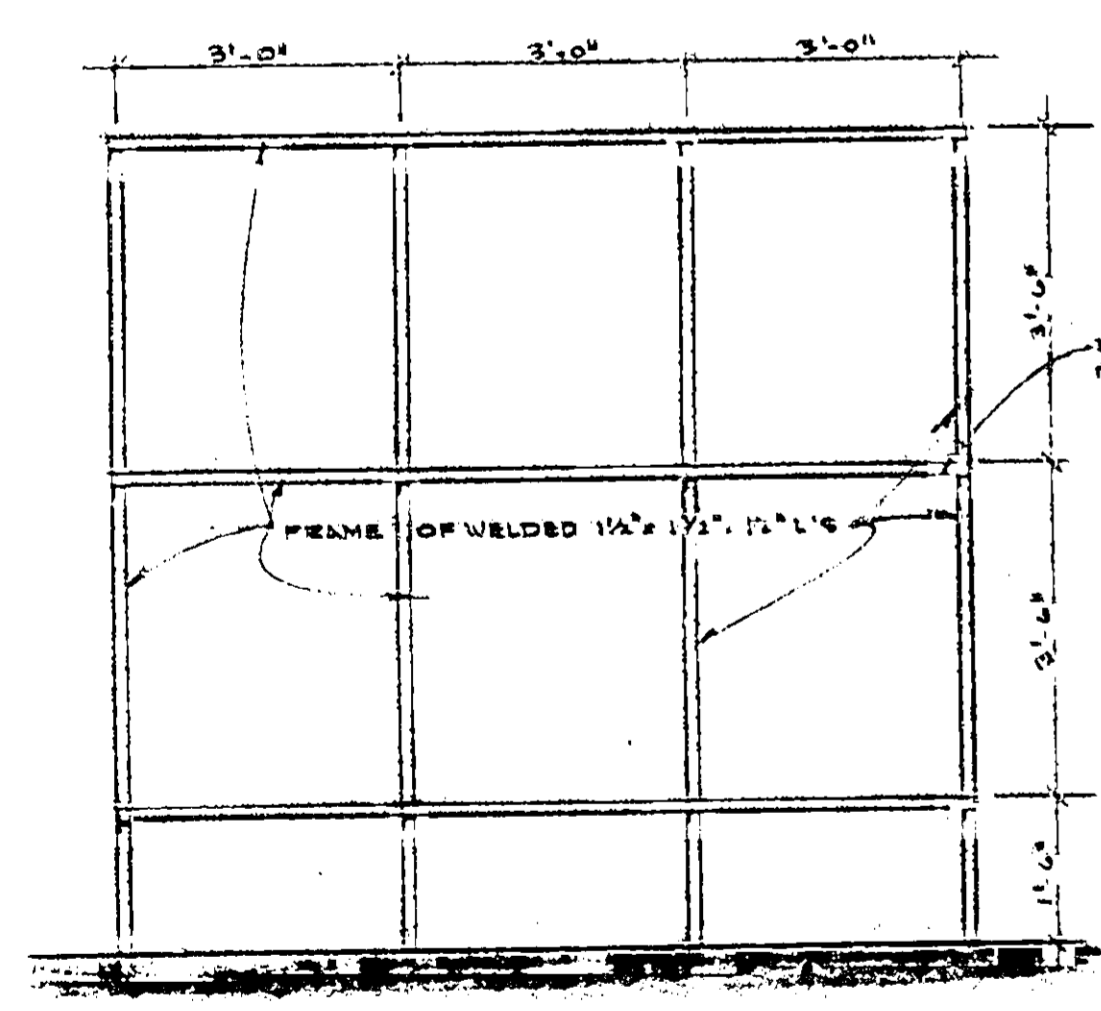
13 SECTION  
SCALE: HALF SIZE



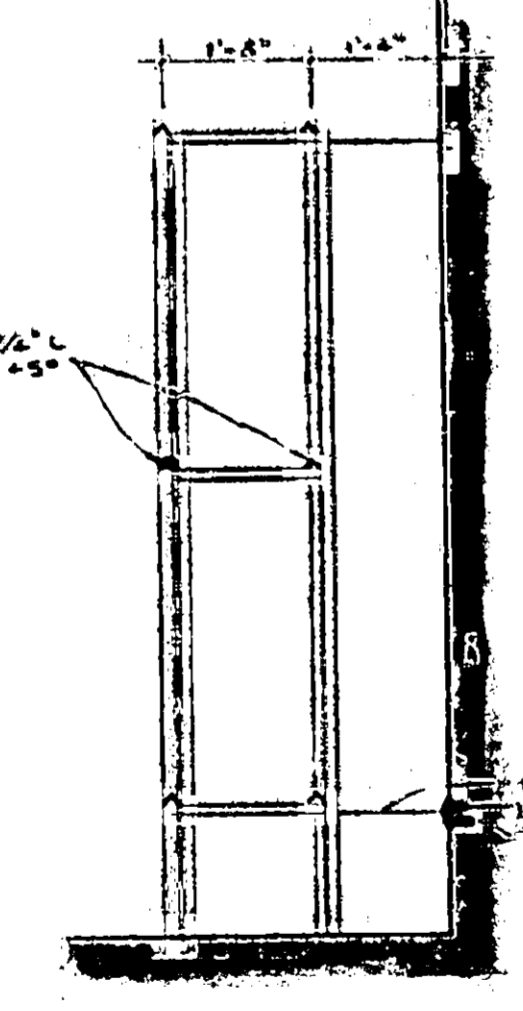
16 SECTION  
SCALE: 1/2" = 1'-0"



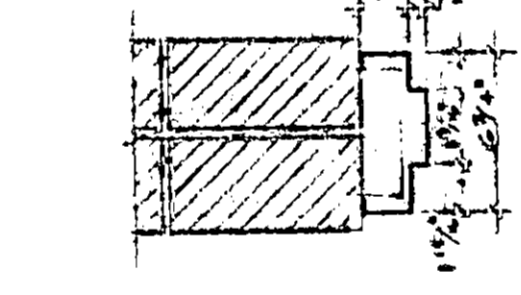
17 SECTION  
SCALE: 1/2" = 1'-0"



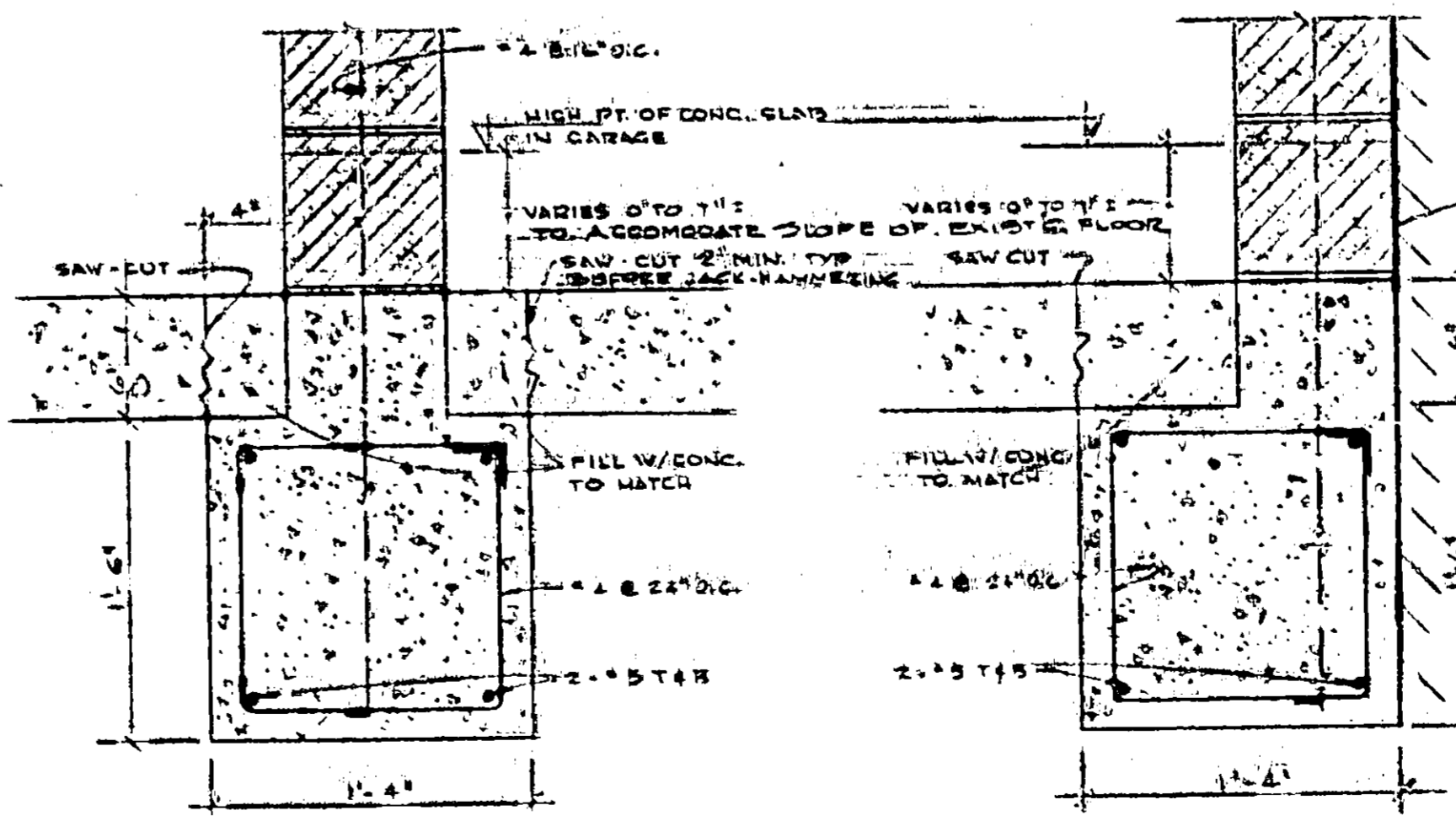
3 SECTION THRU TIRE RACK IN RM 21  
SCALE: 1/2" = 1'-0"



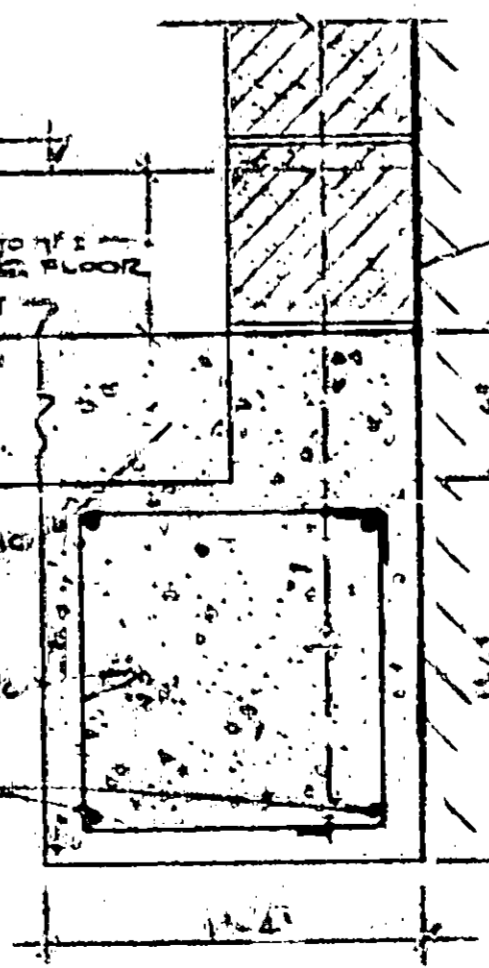
5 SECTION  
SCALE: 1/2" = 1'-0"



10 DOOR JAMB  
SCALE: 1/2" = 1'-0"

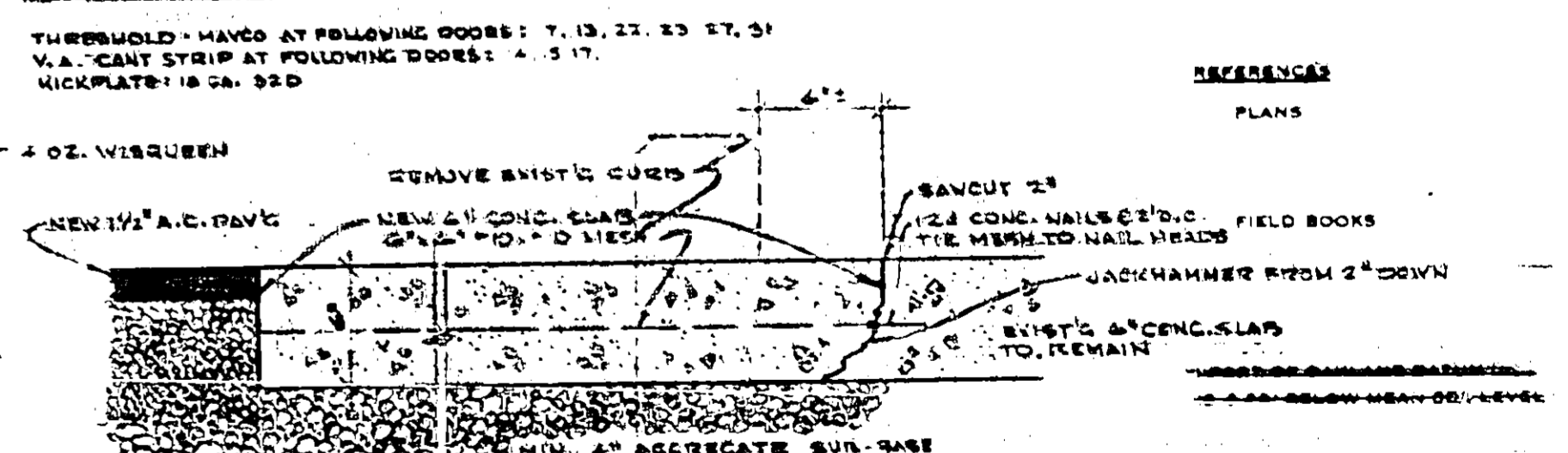


14 FOUNDATION DETAIL  
SCALE: 1/2" = 1'-0"



15 FOUNDATION DETAIL  
SCALE: 1/2" = 1'-0"

DOOR SCHEDULE										HARDWARE		
NO.	DESCRIPTION	NO.	TR.	W.	H.	TYPE	FIN.	LOCKSET	DOOR GL.	OUTSTIKING	DOOR STOP	KICK PLATE
1	U.C.W.D.	3'	4'	8'	1	U.C.W.D.	1	PADLOCK				
2	U.C.W.D.	3'	4'	8'	1	U.C.W.D.	1	PADLOCK				
3	U.C.W.D.	3'	4'	8'	1	U.C.W.D.	1	PADLOCK				
4	U.C.W.D.	3'	4'	8'	1	U.C.W.D.	1	PADLOCK				
5	U.C.W.D.	3'	4'	8'	1	U.C.W.D.	1	PADLOCK				
6	U.C.W.D.	3'	4'	8'	1	U.C.W.D.	1	PADLOCK				
7	U.C.W.D.	3'	4'	8'	1	U.C.W.D.	1	PADLOCK				
8	U.C.W.D.	3'	4'	8'	1	U.C.W.D.	1	PADLOCK				
9	U.C.W.D.	3'	4'	8'	1	U.C.W.D.	1	PADLOCK				
10	U.C.W.D.	3'	4'	8'	1	U.C.W.D.	1	PADLOCK				
11	U.C.W.D.	3'	4'	8'	1	U.C.W.D.	1	PADLOCK				
12	U.C.W.D.	3'	4'	8'	1	U.C.W.D.	1	PADLOCK				
13	U.C.W.D.	3'	4'	8'	1	U.C.W.D.	1	PADLOCK				
14	U.C.W.D.	3'	4'	8'	1	U.C.W.D.	1	PADLOCK				
15	U.C.W.D.	3'	4'	8'	1	U.C.W.D.	1	PADLOCK				
16	U.C.W.D.	3'	4'	8'	1	U.C.W.D.	1	PADLOCK				
17	U.C.W.D.	3'	4'	8'	1	U.C.W.D.	1	PADLOCK				
18	U.C.W.D.	3'	4'	8'	1	U.C.W.D.	1	PADLOCK				
19	U.C.W.D.	3'	4'	8'	1	U.C.W.D.	1	PADLOCK				
20	U.C.W.D.	3'	4'	8'	1	U.C.W.D.	1	PADLOCK				
21	U.C.W.D.	3'	4'	8'	1	U.C.W.D.	1	PADLOCK				
22	U.C.W.D.	3'	4'	8'	1	U.C.W.D.	1	PADLOCK				
23	U.C.W.D.	3'	4'	8'	1	U.C.W.D.	1	PADLOCK				
24	U.C.W.D.	3'	4'	8'	1	U.C.W.D.	1	PADLOCK				
25	U.C.W.D.	3'	4'	8'	1	U.C.W.D.	1	PADLOCK				
26	U.C.W.D.	3'	4'	8'	1	U.C.W.D.	1	PADLOCK				
27	U.C.W.D.	3'	4'	8'	1	U.C.W.D.	1	PADLOCK				
28	U.C.W.D.	3'	4'	8'	1	U.C.W.D.	1	PADLOCK				
29	U.C.W.D.	3'	4'	8'	1	U.C.W.D.	1	PADLOCK				
30	U.C.W.D.	3'	4'	8'	1	U.C.W.D.	1	PADLOCK				
31	U.C.W.D.	3'	4'	8'	1	U.C.W.D.	1	PADLOCK				
32	U.C.W.D.	3'	4'	8'	1	U.C.W.D.	1	PADLOCK				
33	U.C.W.D.	3'	4'	8'	1	U.C.W.D.	1	PADLOCK				
34	U.C.W.D.	3'	4'	8'	1	U.C.W.D.	1	PADLOCK				
35	U.C.W.D.	3'	4'	8'	1	U.C.W.D.	1	PADLOCK				
36	U.C.W.D.	3'	4'	8'	1	U.C.W.D.	1	PADLOCK				
37	U.C.W.D.	3'	4'	8'	1	U.C.W.D.	1	PADLOCK				
38	U.C.W.D.	3'	4'	8'	1	U.C.W.D.	1	PADLOCK				
39	U.C.W.D.	3'	4'	8'	1	U.C.W.D.	1	PADLOCK				
40	U.C.W.D.	3'	4'	8'	1	U.C.W.D.	1	PADLOCK				
41	U.C.W.D.	3'	4'	8'	1	U.C.W.D.	1	PADLOCK				
42	U.C.W.D.	3'	4'	8'	1	U.C.W.D.	1	PADLOCK				
43	U.C.W.D.	3'	4'	8'	1	U.C.W.D.	1	PADLOCK				
44	U.C.W.D.	3'	4'	8'	1	U.C.W.D.	1	PADLOCK				
45	U.C.W.D.	3'	4'	8'	1	U.C.W.D.	1	PADLOCK				
46	U.C.W.D.	3'	4'	8'	1	U.C.W.D.	1	PADLOCK				
47	U.C.W.D.	3'	4'	8'	1	U.C.W.D.	1	PADLOCK				
48	U.C.W.D.	3'	4'	8'	1	U.C.W.D.	1	PADLOCK				
49	U.C.W.D.	3'	4'	8'	1	U.C.W.D.	1	PADLOCK				
50	U.C.W.D.	3'	4'	8'	1	U.C.W.D.	1	PADLOCK				



THRESHOLD - MAINT AT FOLLOWING DOORS: 7, 13, 27, 37, 51  
V.A. CANT STRIP AT FOLLOWING DOORS: 4, 5, 17  
KICKPLATE: 18 GA. 320

REFERENCES  
PLANS

REMOVE EXISTING CURBS  
NEW 1/2" A.C. PAVC  
NEW 2" CONC. SLAB  
2" CONC. NAILS @ 2' O.C. FIELD BOOKS  
TIE MESH TO NAIL HEADS  
JACKHAMMER FROM 2" DOWN  
EXISTING CONC. SLAB TO REMAIN  
MIN. 2" AGGREGATE SUR-FACE

NO.	REVISIONS	DATE

**PORT OF OAKLAND**  
OAKLAND, CALIFORNIA  
DEMOLITION, ALTERATION, CONSTRUCTION OF BUILDINGS FOR  
**CORPORATION YARD**  
DETAILS AND DOOR SCHEDULE & TYPES

CHIEF ENGINEER

DATE 12-2-70  
SCALE AS NOTED

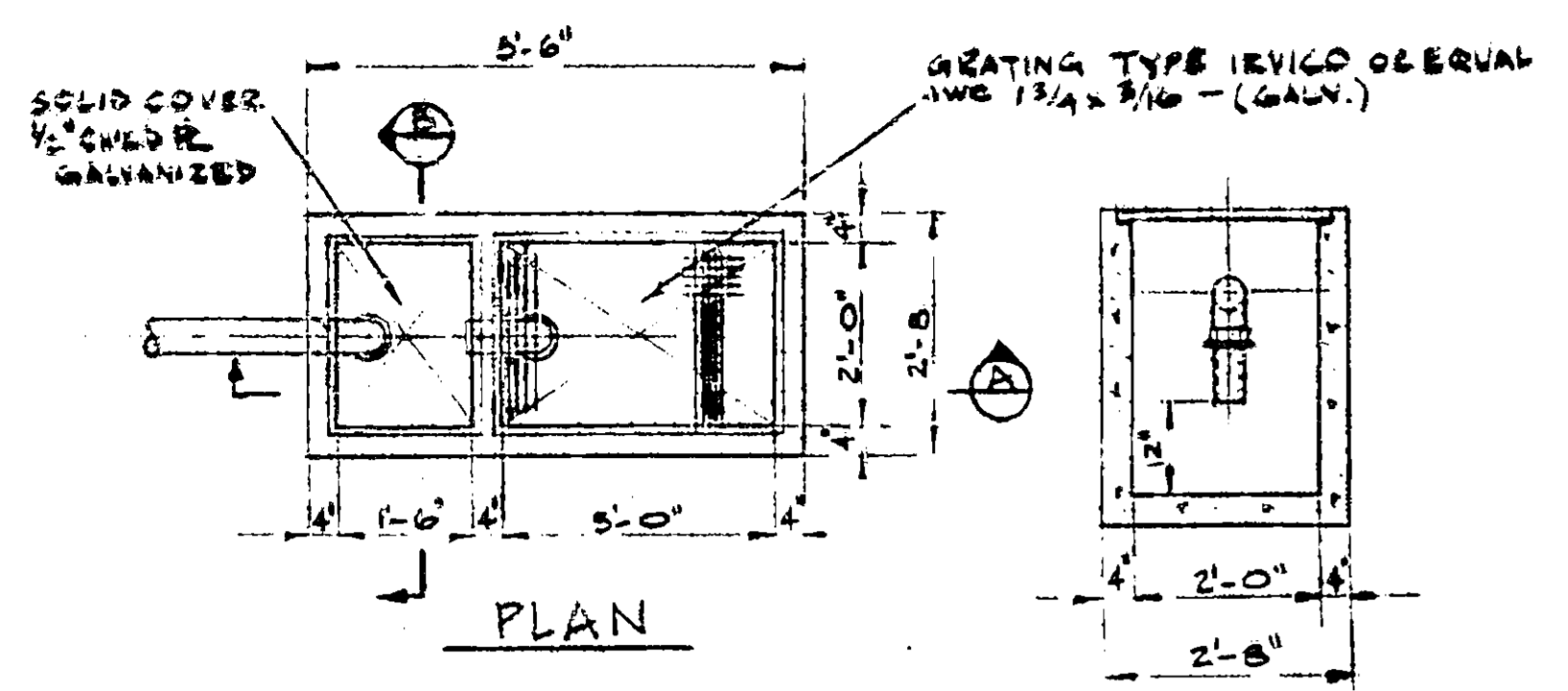
FILE NO. AA 275  
SHEET 8

4 PLAN  
SCALE: 1/2" = 1'-0"

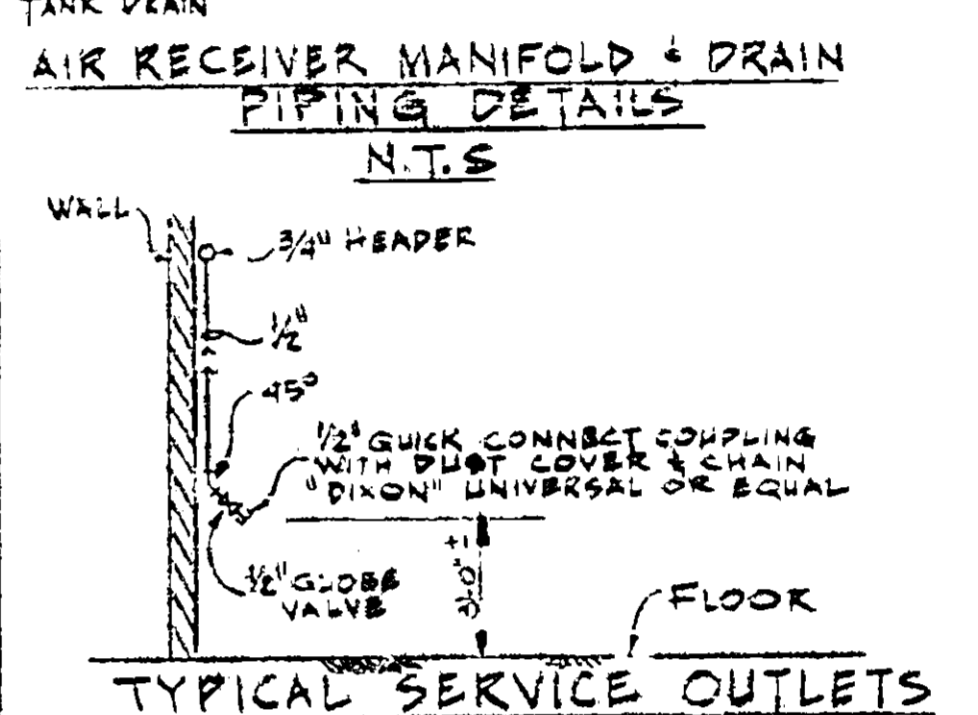
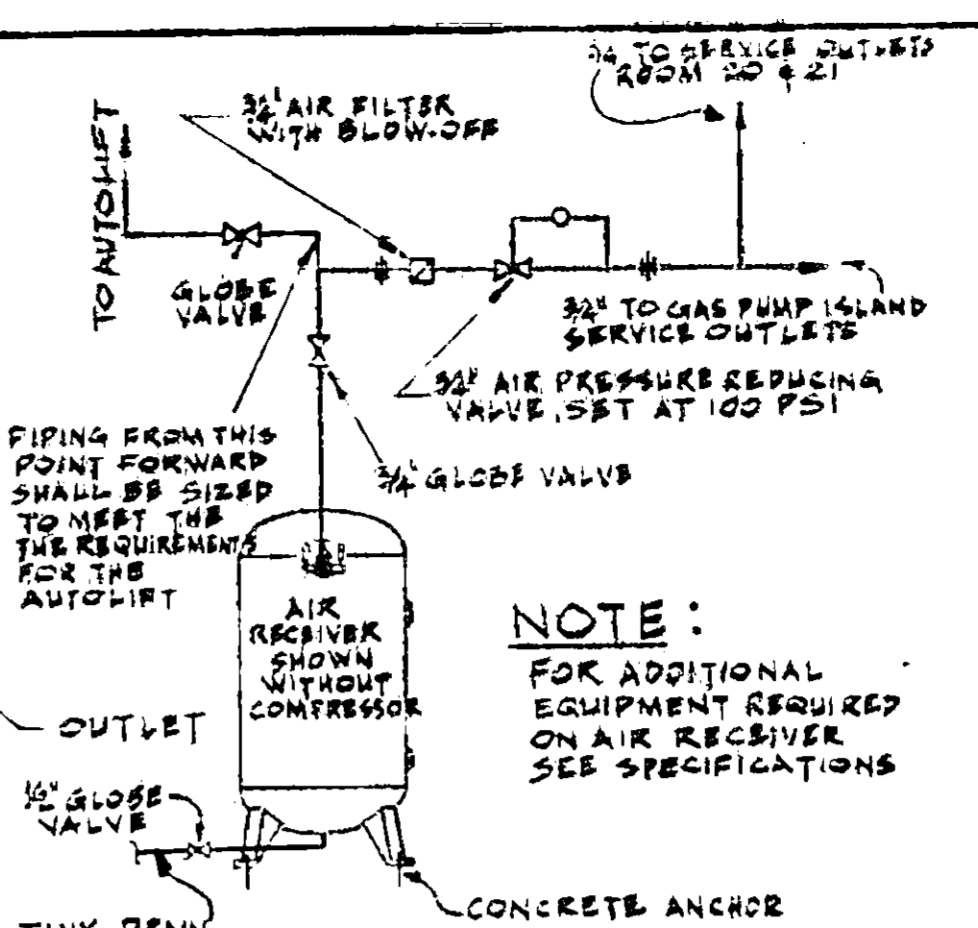
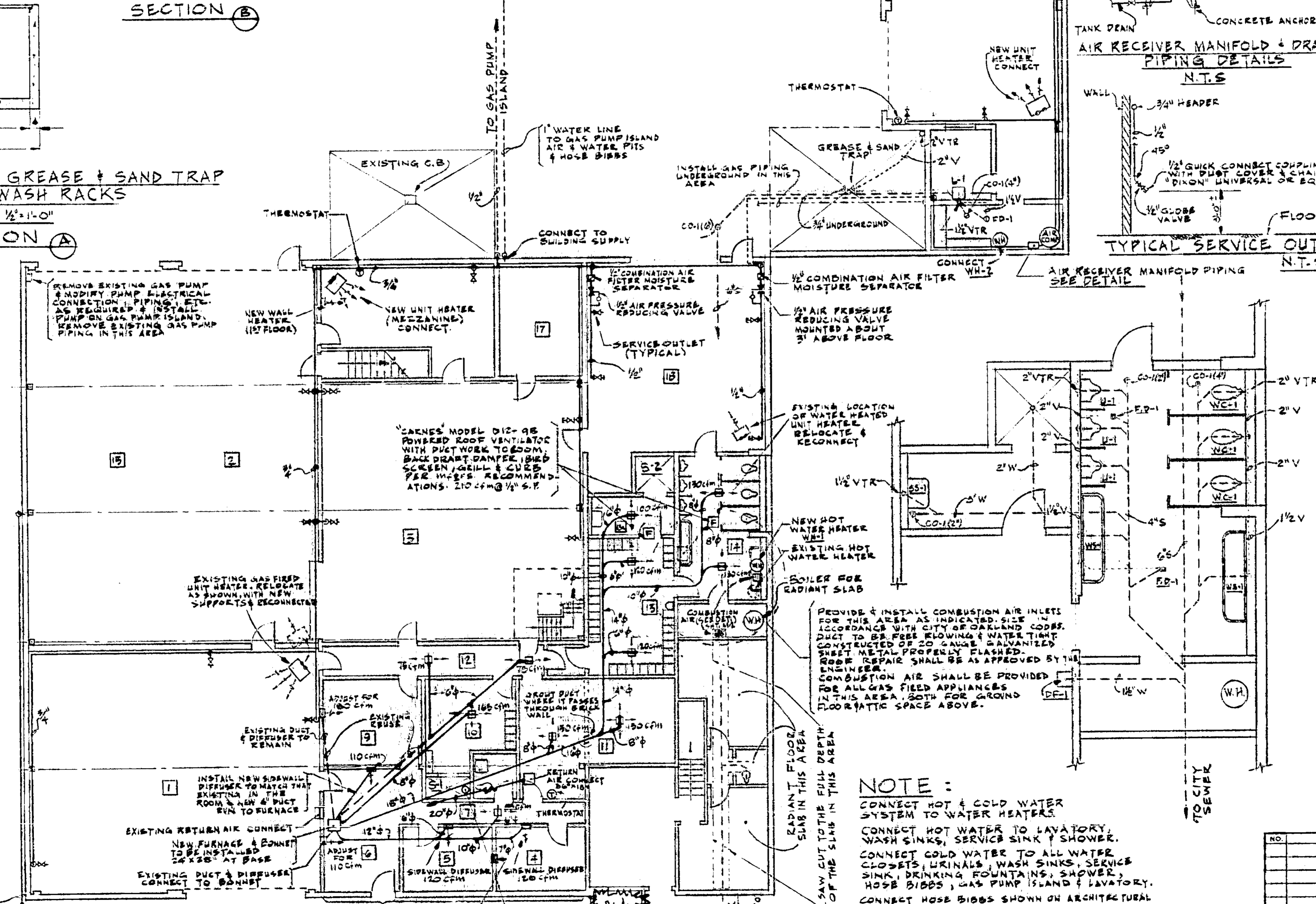
11 DOOR JAMB  
SCALE: 1/2" = 1'-0"







DETAILS OF GREASE & SAND TRAP FOR AUTO WASH RACKS  
SCALE 1/2" = 1'-0"  
SECTION A



- NOTES**
- WHERE CUTTING OF THE EXISTING CONCRETE SLAB IS NECESSARY FOR THE INSTALLATION OF UNDERGROUND PIPING CONDUIT ETC. THE CONCRETE SHALL FIRST BE SAW CUT TO A MINIMUM DEPTH OF 2".
  - PIPING SHALL BE FIRMLY SUPPORTED BY HANGERS, SUPPORTS, GUIDES, ANCHORS & SWAY BRACINGS. CHAIN, STRAPS AND PLUMBERS TAPE SHALL NOT BE USED FOR HANGERS.
  - SIDEWALL DIFFUSERS FOR ROOMS #4 & #5 SHALL BE BARBER COLEMAN TYPE GEA 20"x3" WITH OPPOSED BLADE DAMPER.
  - THE CONTRACTOR SHALL FURNISH & INSTALL TWO SHOWERS (S-1 & S-2 ON DWG.) COMPLETE WITH (GLASS) CERAMIC DIAL LETTE NO. B-1420 PUSH-PULL SHOWER FITTING WITH NGEN UNIT.
  - WATER PIPING INSTALLED BELOW GRADE SHALL BE SCHEDULE 40 GALVANIZED STEEL PIPE WITH SCOTCH 51 TAPE 2" WIDE DOUBLE HALF LAPPED.
  - LAVATORY SHALL BE "NOBICH" #1405-V, 20" x 18" WITH # B-2045A CAPEI DIAL-BSE FITTING.

**H & V LEGEND**

SYMBOL	DESCRIPTION
---	EXISTING DUCTS TO BE REUSED
---	NEW DUCTS TO NEW DIFFUSERS AND/OR RETURN AIR GRILLES
U-1	UNIT HEATER
UR	EXHAUST FAN
DF	DIFFUSER 2WAY BLOW UNDER 125 CFM VPSV61
DF	4WAY BLOW OVER 125 CFM VPSV61
DF	SIDEWALL

**FIXTURE CONNECTION SCHEDULE**

SPEC.	DWG.	ITEM DESCRIPTION	SIZE	V	HW	CW
WC	WC-1	WATER CLOSET	2"	2"	-	3/4"
UR	U-1	URINAL	2"	1 1/2"	-	3/4"
L-1	L-1	LAVATORY	2"	1 1/2"	1/2"	1/2"
WS	WS-1	WASH SINK	2"	1 1/2"	1/2"	1/2"
SS	SS-1	SERVICE SINK	3"	1 1/2"	1/2"	1/2"
DF	DF-1	DRINKING FOUNTAIN	1 1/2"	1 1/2"	-	1/2"
FCO	CO-1	FLOOR CLEANOUT	*	-	-	-
FD	FD-1	FLOOR DRAIN	2"	1 1/2"	-	-
S-1	S-1	SHOWER	2"	1 1/2"	1/2"	1/2"
S-2	S-2	SHOWER	2"	1 1/2"	1/2"	1/2"
WH-1	WH-1	WATER HEATER	-	-	3/4"	3/4"
WH-2	WH-2	WATER HEATER	-	-	3/4"	3/4"
HB-1	HB	HOSE BIBBS - SEE SPECS.	-	-	-	3/4"

\* SEE DWG.

**PLUMBING LEGEND**

SYMBOL	DESCRIPTION
CW	COLD WATER
HW	HOT WATER
NG	NATURAL GAS
V	VENT
VTR	VENT THROUGH ROOF
S	SOIL LINE
W	WASTE LINE

**NOTE:**  
CONNECT HOT & COLD WATER SYSTEM TO WATER HEATERS.  
CONNECT HOT WATER TO LAVATORY, WASH SINKS, SERVICE SINK & SHOWER.  
CONNECT COLD WATER TO ALL WATER CLOSETS, URINALS, WASH SINKS, SERVICE SINK, DRINKING FOUNTAINS, SHOWER, HOSE BIBBS, GAS PUMP ISLAND & LAVATORY.  
CONNECT HOSE BIBBS SHOWN ON ARCHITECTURAL DRAWINGS.

**NOTE:**  
PROVIDE OR MODIFY EXISTING FURNACE & RETURN PLENUM AS REQUIRED TO FURNISH AN OUTSIDE AIR TEMPERATURE CONTROLLED DAMPER MOTOR OPERATED SYSTEM. THE WINTER CONDITION SHALL BE 25% OUTSIDE AIR FROM OUTSIDE OF THE BUILDING MIXED WITH RETURN ROOM AIR. THE SUMMER CONDITION SHALL BE 100% OUTSIDE AIR FROM OUTSIDE OF THE BUILDING EXPELLING ALL RETURN AIR. DAMPER MOTOR SHALL BE OF THE MODULATING TYPE.

**PORT OF OAKLAND**  
OAKLAND, CALIFORNIA  
INNER HARBOR  
DEMOLITION, ALTERATION, CONST. OF BUILDING FOR  
CORPORATION YARD  
HEATING) & PLUMBING

NO. \_\_\_\_\_ REVISIONS \_\_\_\_\_ DATE \_\_\_\_\_

DATE 12-7-70 FILE AA.1275

SCALE 1/2" = 1'-0"

CHIEF ENGINEER

APPROVED \_\_\_\_\_

MICROFILMED

