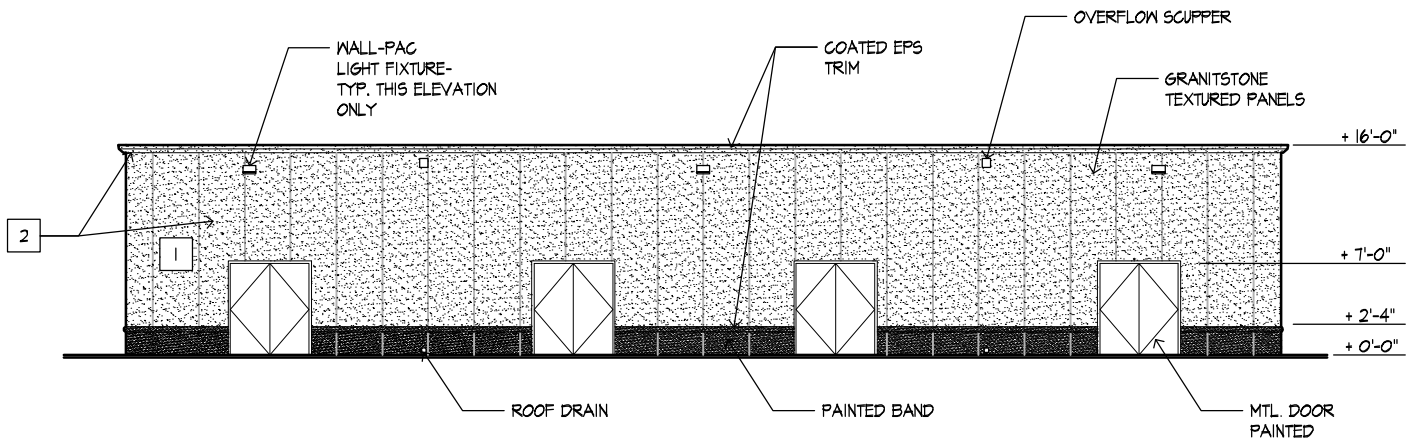


SITE PLAN  
1" = 10'-0"



**RECEIVED**

4:35 pm, Feb 01, 2011  
Alameda County  
Environmental Health

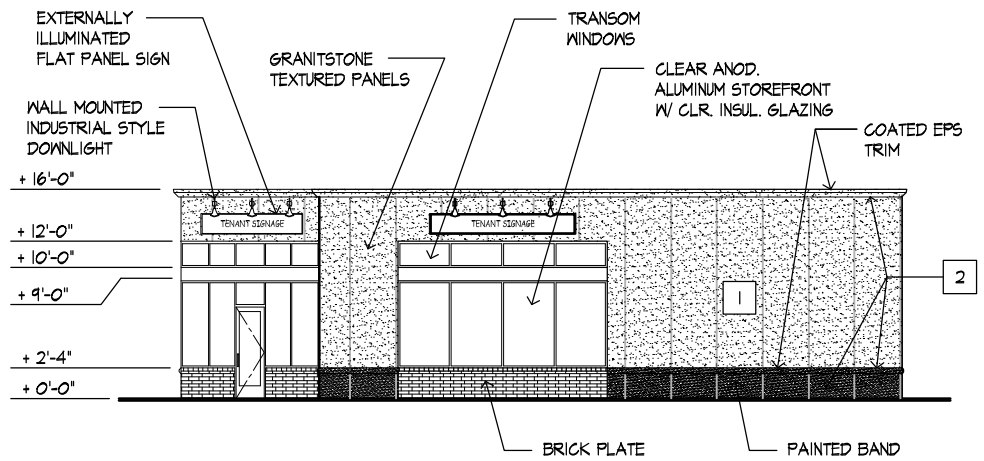


**SOUTH ELEVATION**

1" = 10'-0"

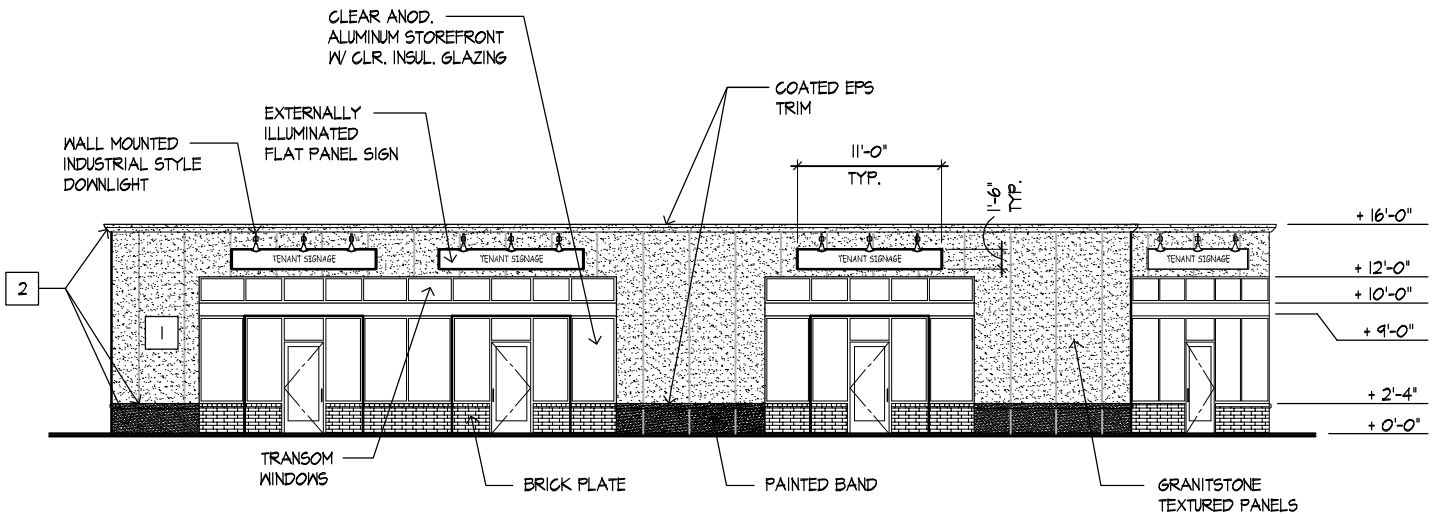
**EXTERIOR FINISH SCHEDULE**

- 1 API GRANITSTONE TEXTURED PANEL 'SANDSTONE'
- 2 PAINT TO MATCH API GRANITSTONE 'PARCHMENT'



**WEST ELEVATION**

1" = 10'-0"



**NORTH ELEVATION**

1" = 10'-0"

NOTES:  
 1. MAXIMUM SQUARE FOOTAGE FOR SIGNAGE AT EACH TENANT SPACES SHALL BE EQUAL TO THE LINEAR FRONTAGE OF THE TENANT SPACE.  
 SIGNS SHOWN AS FOUR 22 S.F. SIGNS WITH 88'-2" FRONTAGE.