

RECEIVED

3:41 pm, Oct 18, 2011

Alameda County
Environmental Health

October 13, 2011

Ms. Donna Drogos
Alameda County Environmental Health
1131 Harbor Parkway, Suite 250
Oakland, CA 94502-6577

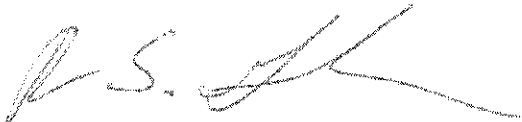
Subject: Third Quarter 2011 Monitoring and Interim Results Report
Addendum
Shore Acres Gas
403 East 12th Street, Oakland, Alameda County, California
RO #0002931
ECG # GHA.19009

Dear Ms. Drogos:

Enclosed please find a copy of the October 13, 2011 Third Quarter 2011 Monitoring and Interim Results Report Addendum with proposed off-site boring locations shown on an aerial photograph for the above referenced site prepared by our consultant Environmental Compliance Group, LLC.

I declare, under penalty and perjury, that the information and/or recommendations contained in this report are true and correct to the best of my knowledge.

Respectfully,



Rashid Ghafoor

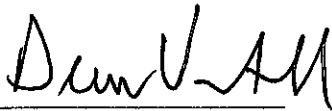
THIRD QUARTER 2011 GROUNDWATER
MONITORING AND INTERIM RESULTS
REPORT ADDENDUM REPORT

SHORE ACRES GAS
403 EAST 12TH STREET
OAKLAND, CALIFORNIA

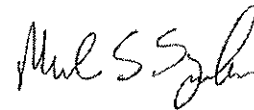
Prepared for: Rashid Ghafoor

ECG Project Number: GHA.19009
Alameda County Fuel Leak Case No. RO0002931

October 13, 2011



Drew Van Allen
Senior Project Manager



Michael S. Sgourakis
Principal Geologist
CA P.G. No. 7194

TABLE OF CONTENTS

Introduction.....	2
Limitations	2
Site Description and Hydrogeologic Conditions.....	2
Site Description.....	2
Hydrogeologic Conditions	2
Cleanup Criteria.....	3
Project Background	3
Investigations	3
Risk Assessments.....	4
Corrective Actions	4
Third Quarter 2011 Monitoring Event.....	4
Results and Conclusions	5

Figures

Figure 1:	Site Location Map
Figure 2:	Site Map
Figure 3:	Potentiometric Surface Map
Figure 4:	TPHg in Groundwater Isoconcentration Map
Figure 5:	Benzene in Groundwater Isoconcentration Map
Figure 6:	MTBE in Groundwater Isoconcentration Map
Figure 7:	Proposed Grab Sample Location Map

Tables

Table 1:	Well Construction Details
Table 2a:	Historical Soil Analytical Data, TPH and BTEX
Table 2b:	Historical Soil Analytical Data, Oxygenates and Lead Scavengers
Table 3a:	Grab Groundwater Sample Results, TPH and BTEX
Table 3b:	Grab Groundwater Sample Results, Oxygenates and Lead Scavengers
Table 4a:	Monitoring Well Data, Water Level, TPH, and BTEX
Table 4b:	Monitoring Well Data, Oxygenates and Lead Scavengers

Appendices

Appendix A:	Standard Operating Procedures
Appendix B:	Laboratory Analytical Reports
Appendix C:	Field Notes

INTRODUCTION

Environmental Compliance Group (ECG) has been authorized by Mr. Rashid Ghafoor to provide this interim results report for the site.

This report describes activities conducted during Third Quarter 2011 groundwater monitoring event. In addition, this report serves as the Interim Results Report Addendum by providing an aerial photograph of the site and the surrounding area including offsite MTBE detection locations as requested by Alameda County in their correspondence dated September 20, 2011. Site information is as follows:

Site Location:	403 East 12 th Street Oakland, California
Geotracker Global ID:	T0600174667

LIMITATIONS

This report has been prepared for use by Rashid Ghafoor and the relevant regulatory agencies. The conclusions in this report are professional opinions based on the data presented in this report. This report was prepared in general accordance with hydrogeologic and engineering methods and standards. No other warranties are made as to the findings or conclusions presented in this report. The work described in this report was performed under the direct supervision of the professional geologist whose signature and State of California registration are shown above.

SITE DESCRIPTION AND HYDROGEOLOGIC CONDITIONS

SITE DESCRIPTION

The site occupies a parcel on the southeast corner of 4th Avenue and East 12th Street in Oakland, Alameda County, California (Figure 1). The site is situated in a commercial and residential area in central Oakland and is currently vacant. The site was historically used as a gasoline station. The area of interest at the site is the former location of three underground storage tanks (USTs) and fuel dispensers where impacted soil and groundwater was first identified in 2006. A detailed site plan is shown on Figure 2.

HYDROGEOLOGIC CONDITIONS

The site is underlain by Quaternary-age dune sand deposits referred to as the Merritt Sand. The Merritt Sand is typically described as loose, well-sorted fine- to medium-grained sand with a large silt component. The sand is reported to reach a maximum depth of 50-feet bgs in the area.

Based on boring logs from the advancement of 11 soil borings and the installation of six monitoring wells and four extraction wells, the stratigraphy of the site and vicinity consists of silt to

approximately 30-feet bgs with discontinuous thin intervals of sandy silt and clayey sand present in the area.

Depth to groundwater is shallow, ranging between 10- to 13-feet bgs. The groundwater flow direction appears to be toward the southwest.

CLEANUP CRITERIA

It is prudent to establish cleanup goals for soil and groundwater based upon reaching the residential Environmental Screening Levels (ESLs) established by Region II for sites with shallow soil where groundwater is not a current or potential drinking water source. The primary constituents of concern relative to the site appear to be total petroleum hydrocarbons as diesel (TPHd) and gasoline (TPHg) benzene, toluene, ethylbenzene, and xylenes (BTEX), methyl tertiary butyl ether (MTBE), and tertiary butyl alcohol (TBA). Accordingly, the following cleanup goals are proposed:

Constituent	Soil (mg/kg)	Groundwater (ug/L)
TPHd	100	210
TPHg	100	210
Benzene	0.12	46
Toluene	9.3	130
Ethylbenzene	2.3	43
Xylenes	11	100
MTBE	8.4	1,800
TBA	100	18,000

PROJECT BACKGROUND

INVESTIGATIONS

In July 2006, Geofon Incorporated (Geofon) advanced soil borings GP-1 and GP-2 and collected and analyzed soil samples. Results are detailed in Geofon's report entitled *Summary of Phase II Assessment Activities*, dated July 25, 2006.

In August 2009, Wright Environmental Services, Inc. (Wright) removed three USTs, associated fuel dispensers, and all associated piping. Results are detailed in Wright's *Closure Report for Three Underground Storage Tanks*, dated September 2009.

In April 2010, Apex Envirotech, Inc. (Apex) advanced nine soil borings to evaluate the lateral extent of impacted soil and groundwater. Results are documented in Apex's *Subsurface Investigation Results Report* dated June 23, 2010.

In June 2011, ECG supervised the installation of six groundwater monitoring wells (MW-1 through MW-6) and two nested extraction well pairs (EW-1s, EW-1d, EW-2s, and EW-2d). Results are documented in ECG's *Interim Results and Second Quarter 2011 Monitoring Report*, dated August 17, 2011.

RISK ASSESSMENTS

In January 2011, ECG conducted a preferential pathway study for the site. Results are detailed in ECG's *Site Assessment and Soil Vapor Extraction Pilot Test Workplan*, dated February 9, 2011.

In January 2011, ECG conducted a sensitive receptor survey for the site. Results are detailed in ECG's *Site Assessment and Soil Vapor Extraction Pilot Test Workplan*, dated February 9, 2011.

A soil vapor survey has not been completed for the site.

CORRECTIVE ACTIONS

In June 2011, ECG supervised the installation of six groundwater monitoring wells (MW-1 through MW-6) and two nested extraction well pairs (EW-1s, EW-1d, EW-2s, and EW-2d). ECG also performed a 5-day dual phase extraction (DPE) test in June 2011. Results of the pilot test will be detailed in a report currently being prepared.

THIRD QUARTER 2011 MONITORING EVENT

ECG performed the third quarter 2011 groundwater monitoring and sampling event at the site on September 22, 2011. Gauging, development, purging, and sampling were conducted in accordance with ECG's SOPs included in Appendix A. The collected groundwater samples were submitted to Argon Analytical Services, Inc. located in Ceres, California for laboratory analysis under COC protocols (Appendix B).

The following is a summary of the current status of the groundwater monitoring program at the site:

Current Phase of Project:	Assessment
Groundwater Sampling Schedule:	Quarterly Wells MW-1 through MW-6, EW-1, and EW-2
Analysis:	TPHg and TPHd by EPA Method 8015M, BTEX, 5 oxygenates, and 2 lead scavengers by EPA Method 8260B
Is Free Product Present On-Site:	No

The following is a summary of recent field and analytical data:

Average Depth to Groundwater	12.39-feet below ground surface (bgs)
Average Groundwater Elevation	18.79-feet above mean sea level
Groundwater Gradient Direction	Southwest
Groundwater Gradient	0.018 feet/foot
TPHg Detected Range	12,000 ug/L (MW-2) to 120,000 ug/L (MW-5)
Benzene Detected Range	300 ug/L (MW-2) to 15,000 ug/L (MW-3)
MTBE Detected	110 ug/L (MW-2) to 11,000 (MW-3)

Laboratory analytical reports and COCs are provided in Appendix B. Field notes are located in Appendix C. Summaries of groundwater monitoring and analytical data are presented in Tables 4a and 4b.

RESULTS AND CONCLUSIONS

Groundwater flow is towards the southwest during this event which agrees with the contaminant distribution in soil and groundwater (Figure 3). Groundwater isoconcentration maps (Figures 4 through 6) display an apparent southwest flow direction based on contaminant concentrations in groundwater. TPHg and benzene are not defined in any direction. MTBE is defined to the northeast by well MW-4.

Based on the Jun 2011 site investigation, seven soil borings are proposed to attempt to laterally define TPHg, benzene, and MTBE in soil and groundwater. The proposed borings are shown on Figure 7. The three borings on east 11th Street and the westernmost boring on 4th Avenue are located to provide the lateral definition in the apparent downgradient direction. The two additional borings on 4th Avenue and the boring on East 12th Street will address the lateral spread of TPHg and benzene to the north and east based on the offsite detections and a possible preferential pathway along 4th Avenue and the contaminant distribution shown on Figures 3 through 6.

The aerial photograph requested by Alameda County is shown on Figure 7.

FIGURES

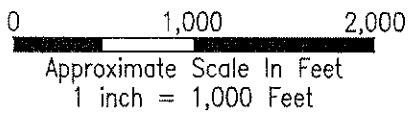



FIGURE 1	SITE LOCATION MAP Shore Acre Gas 403 East 12th Street Oakland, California	 Environmental Compliance Group, LLC 270 Vintage Drive, Turlock, CA 95382 Phone: (209) 664-1035
Project Number: GHA.19009		
Date: February 9, 2011		

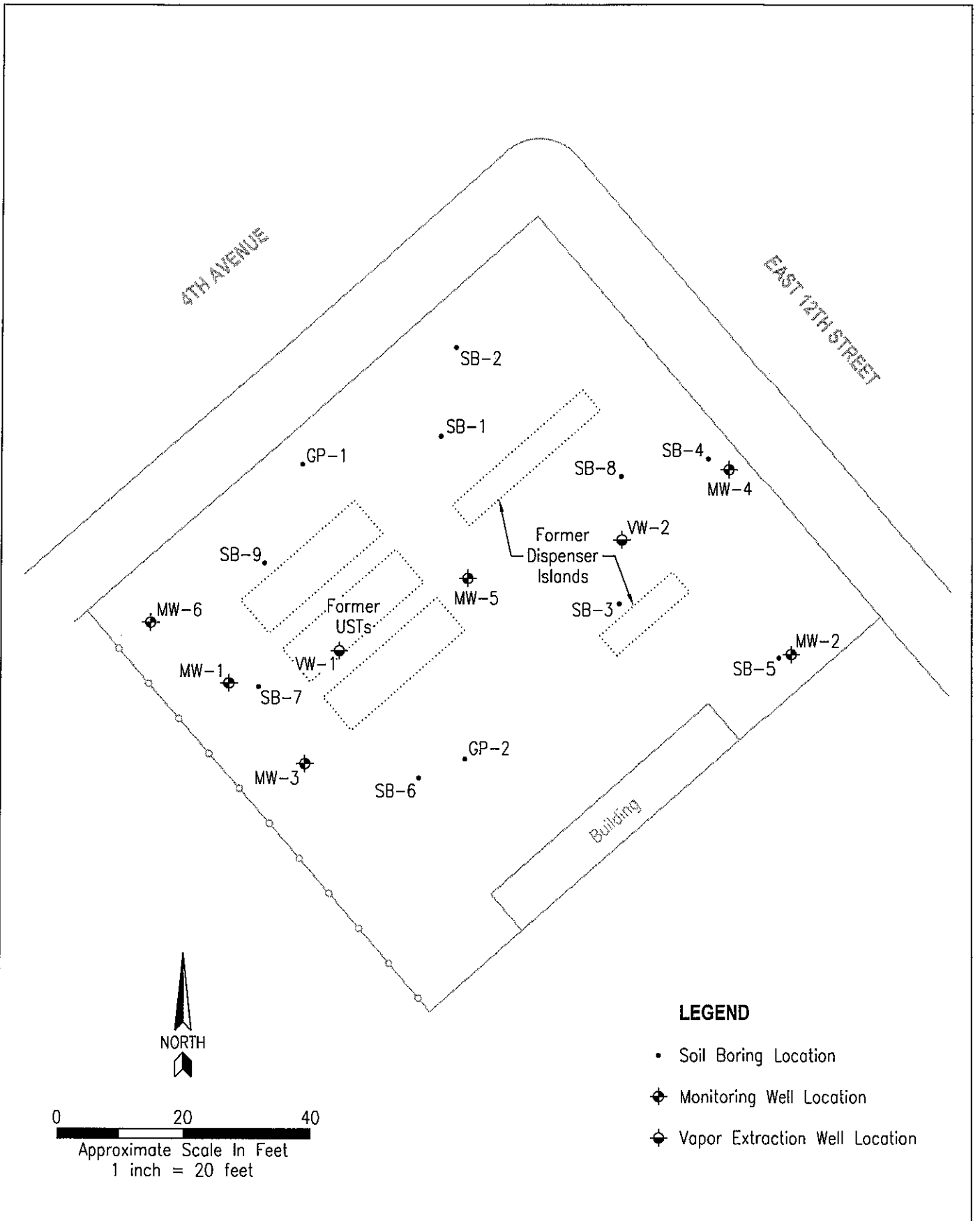


FIGURE 2

Project Number:
GHA.19009

Date:
July 21, 2011

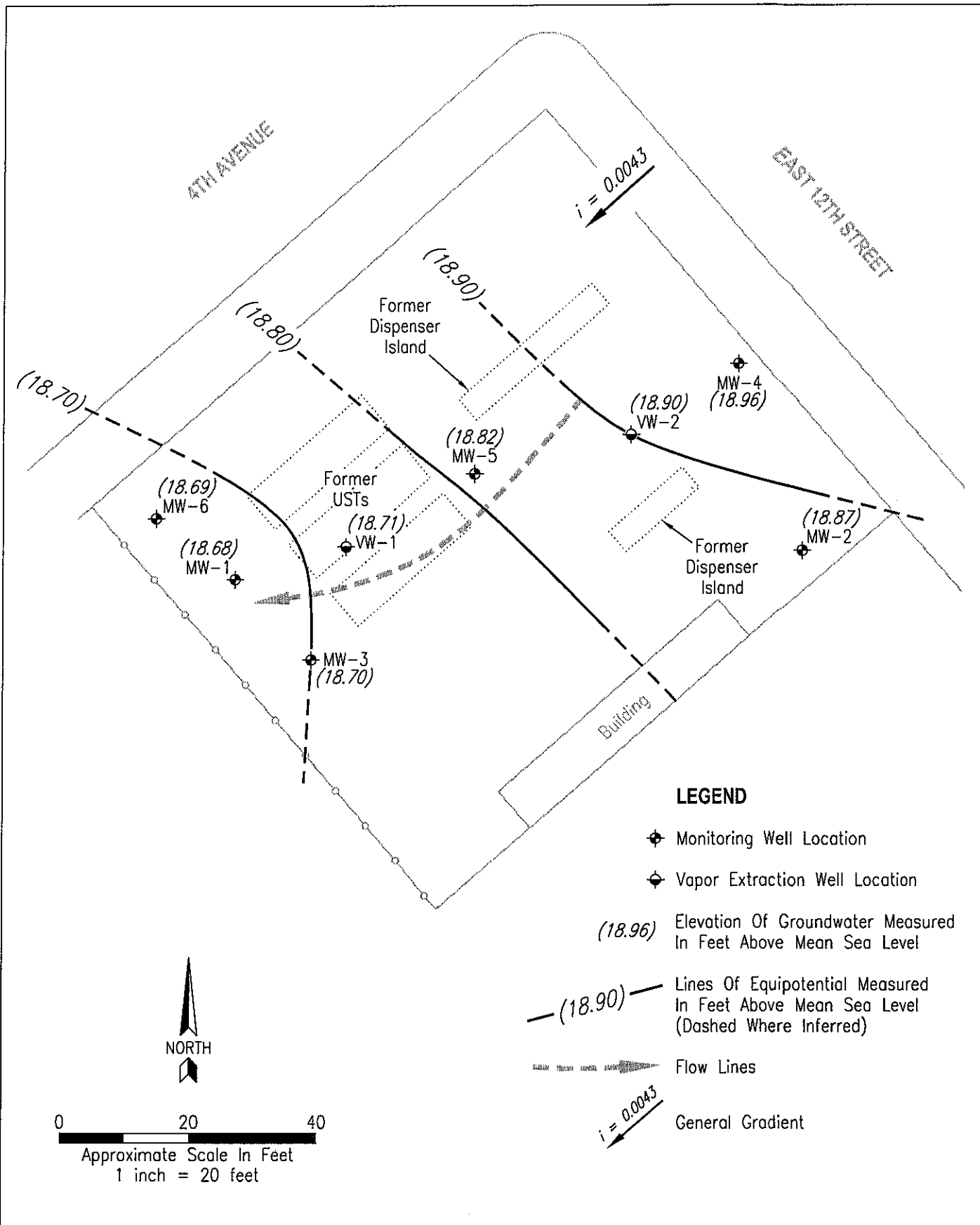
SITE MAP


Shore Acre Gas
403 East 12th Street
Oakland, California



**Environmental
Compliance
Group, LLC**

270 Vintage Drive, Turlock, CA 95382
Phone: (209) 664-1035



<p>FIGURE 3</p>	<p align="center">POTENTIOMETRIC SURFACE MAP SEPTEMBER 22, 2011 Shore Acre Gas 403 East 12th Street Oakland, California</p>	 <p>Environmental Compliance Group, LLC 270 Vintage Drive, Turlock, CA 95382 Phone: (209) 664-1035</p>
<p>Project Number: GHA.19009</p>		
<p>Date: October 12, 2011</p>		

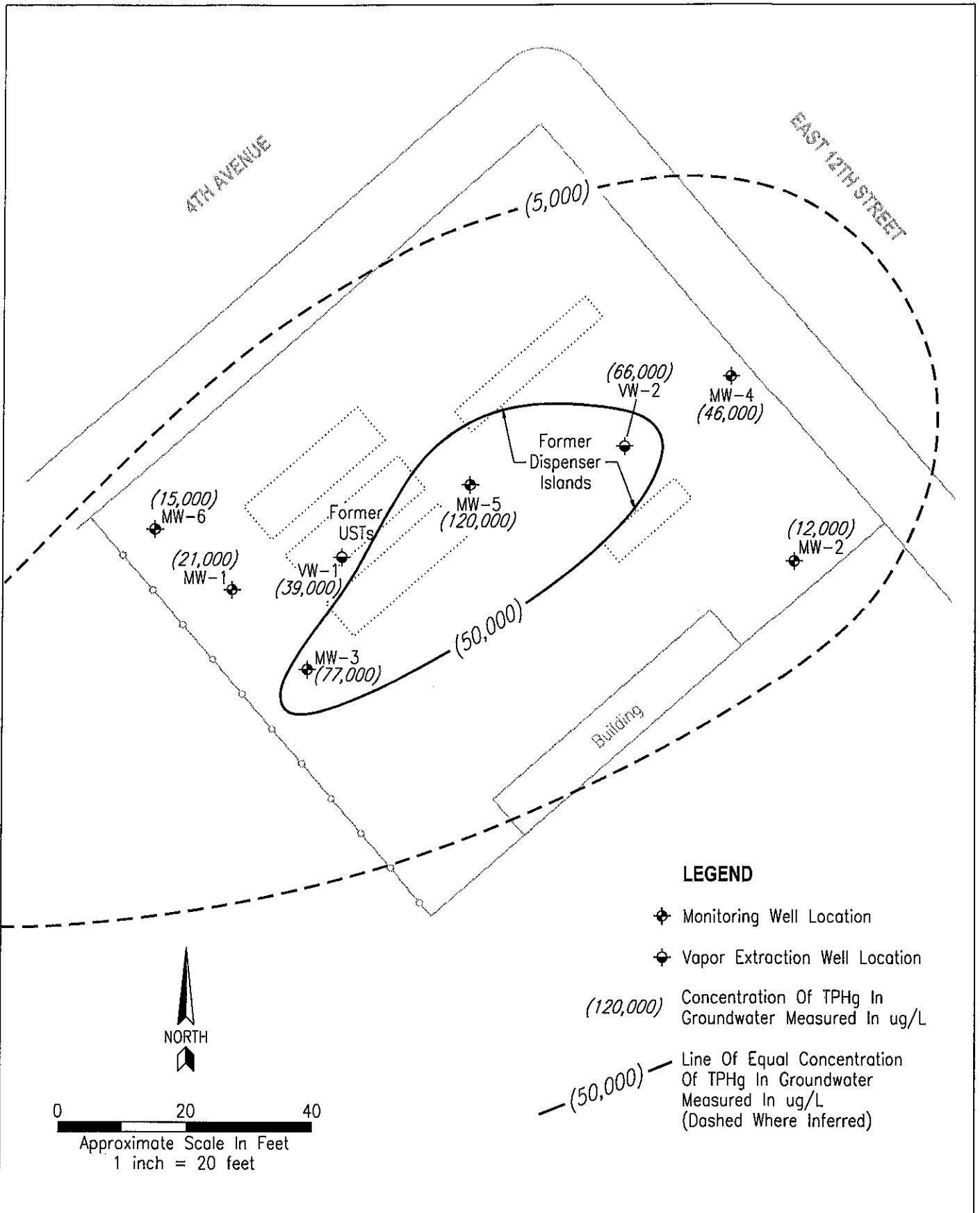


FIGURE 4

Project Number:
GHA.19009

Date:
October 12, 2011

**TPHg IN GROUNDWATER ISOCONCENTRATION MAP
SEPTEMBER 22, 2011**

Shore Acre Gas
403 East 12th Street
Oakland, California



270 Vintage Drive, Turlock, CA 95382
Phone: (209) 664-1035

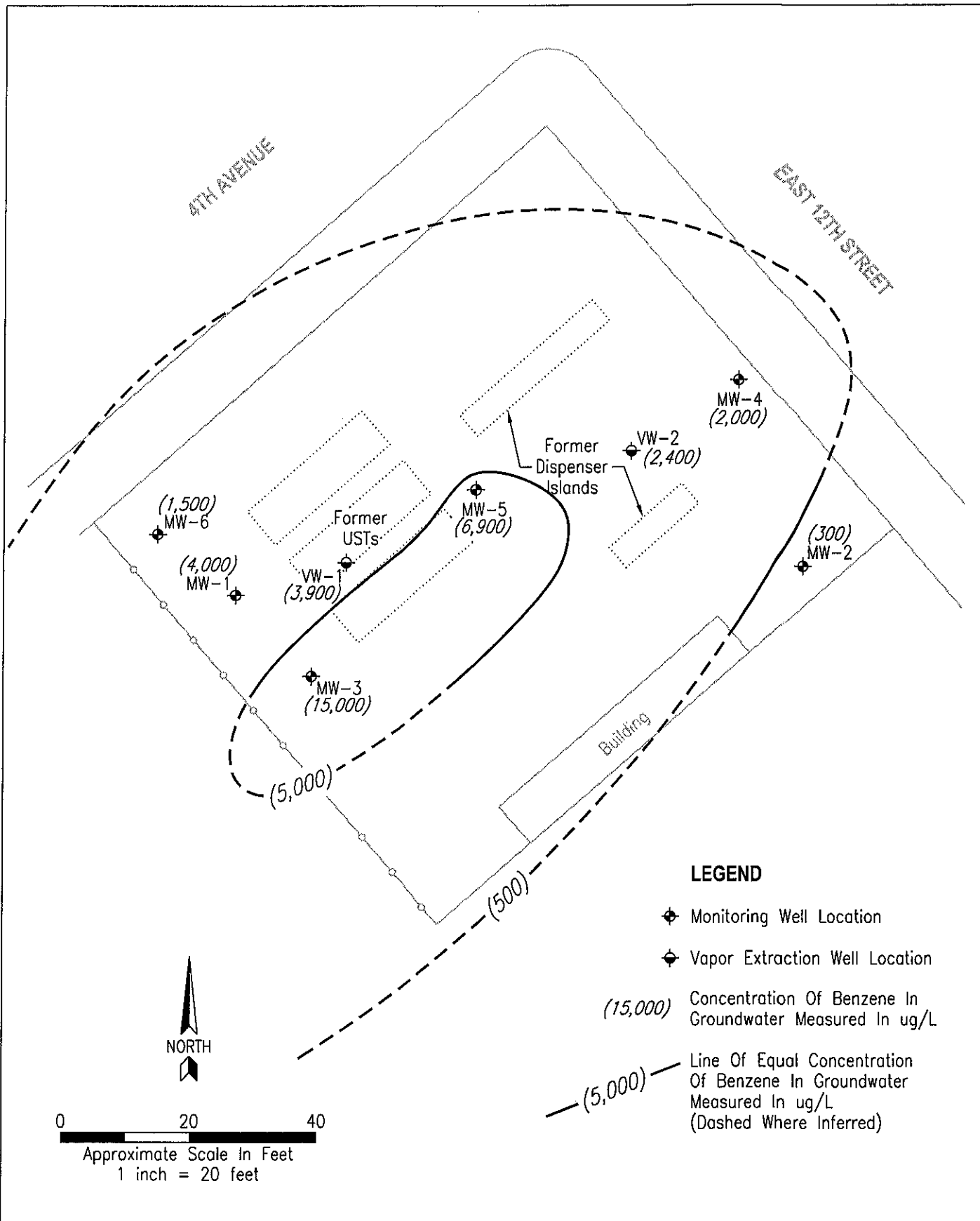


FIGURE 5

Project Number:
GHA.19009

Date:
October 12, 2011

BENZENE IN GROUNDWATER ISOCONCENTRATION MAP
SEPTEMBER 22, 2011
 Shore Acre Gas
 403 East 12th Street
 Oakland, California

 **Environmental Compliance Group, LLC**
 270 Vintage Drive, Turlock, CA 95382
 Phone: (209) 664-1035

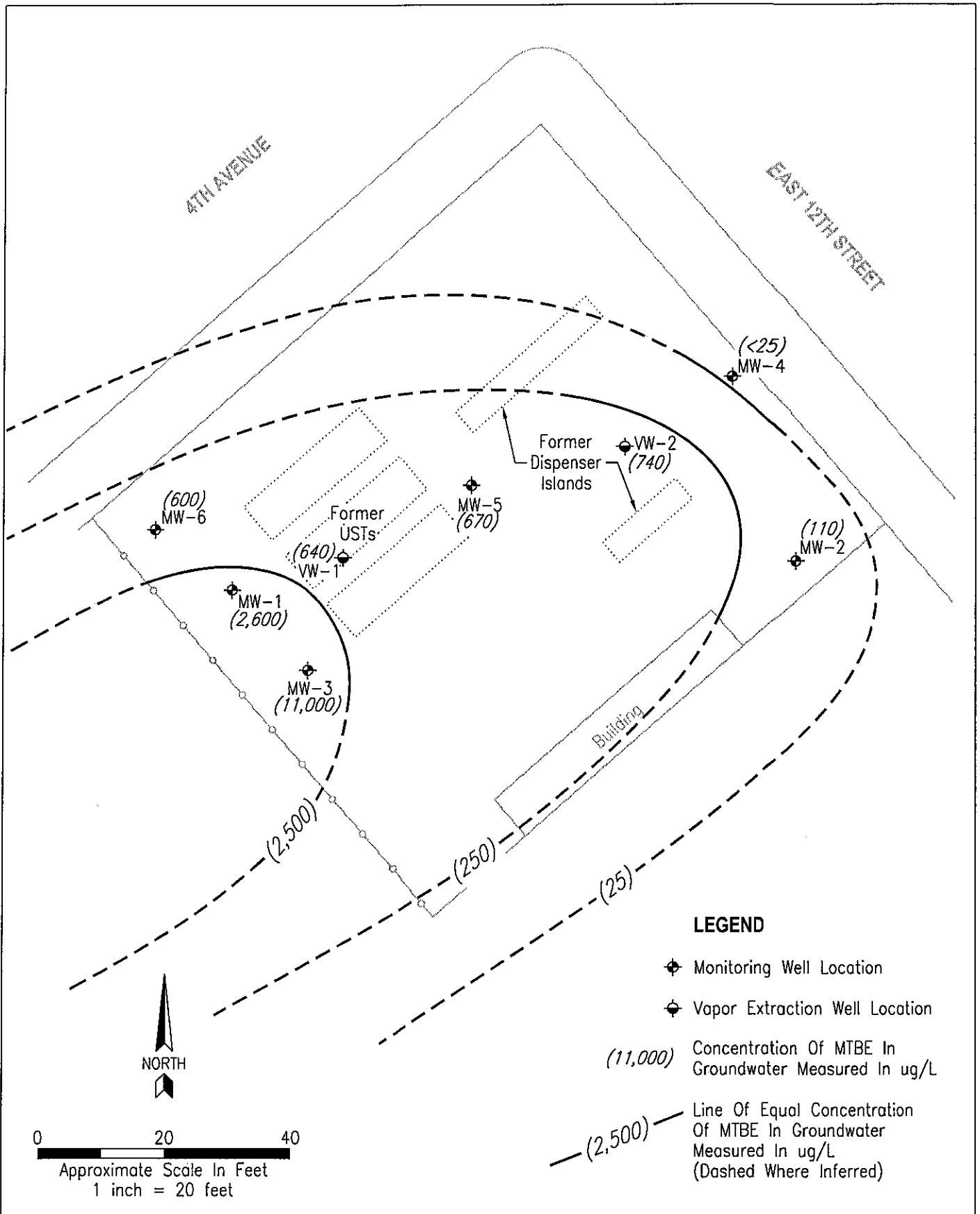


FIGURE 6

Project Number:
GHA.19009

Date:
October 12, 2011

MTBE IN GROUNDWATER ISOCONCENTRATION MAP
SEPTEMBER 22, 2011
 Shore Acre Gas
 403 East 12th Street
 Oakland, California



Environmental Compliance Group, LLC
 270 Vintage Drive, Turlock, CA 95382
 Phone: (209) 664-1035



0 60 120

Approximate Scale In Feet
1 inch = 60 feet

LEGEND

- | | | |
|--|--------------------------|----------------------------|
| ✕ Proposed Soil/Groundwater Grab Sample Point Location | ----- Storm Drain | - - - - - PG&E Gas Line |
| | - · - · - Sanitary Sewer | — · — PG&E Electrical Line |
| | ----- Water Line | — — — Pacific Bell Line |

 **Environmental Compliance Group, LLC**
270 Vintage Drive, Turlock, CA 95382
Phone: (209) 664-1035

PROPOSED GRAB SAMPLE LOCATION MAP

Shore Acre Gas
403 East 12th Street
Oakland, California

FIGURE 7

Project Number:
GHA.19009

Date:
October 4, 2011

TABLES

Table 1
Well Construction Details
 Shore Acres Gas
 403 East 12th Street
 Oakland, California

Well ID	Date Installed	TOC Elevation (ft amsl)	Well Depth (ft bgs)	Casing Diameter (inches)	Casing Material	Screen/Filter	Screen Interval (ft bgs)
Monitoring Wells							
MW-1	June 2011	30.81	20	2	PVC	0.020/#3	10-20
MW-2		31.29	20	2	PVC	0.020/#3	10-20
MW-3		31.30	18	2	PVC	0.020/#3	8-18
MW-4		31.21	19	2	PVC	0.020/#3	9-19
MW-5		31.35	20	2	PVC	0.020/#3	10-20
MW-6		30.79	20	2	PVC	0.020/#3	10-20
Dual Phase Extraction Wells							
VW-1	June 2011	31.26	20	4	PVC	0.020/#3	5-20
VW-2		31.40	20	4	PVC	0.020/#3	5-20

Notes:

- TOC - denotes top of casing
- ft - denotes feet
- amsl - denotes above mean sea level
- bgs - denotes below ground surface
- PVC - denotes polyvinyl chloride

Table 2a
Historical Soil Analytical Data
TPH and BTEX
 Shore Acres Gas
 403 East 12th Street
 Oakland, California

Boring ID	Sample Depth (feet)	Collection Date	TPHd (mg/kg)	TPHg (mg/kg)	Benzene (mg/kg)	Toluene (mg/kg)	Ethylbenzene (mg/kg)	Total xylenes (mg/kg)
UST Removal Samples								
SS-D1	2	August 2009	1,800*	3,000	<0.25	0.34	39	180
SS-D2	2		900*	2,400	<0.25	<0.25	36	120
SS-D3	2		460*	1,000	<0.15	<0.15	12	14
SS-D4	2		540*	640	<0.090	1.0	6.1	51
SS-D5	2		320	140	<0.025	<0.025	1.3	3.2
SS-D6	2.0		320*	260	<0.025	0.054	1.0	8.0
SS-J1	2.0		39*	160	<0.025	<0.025	0.71	0.94
SS-Isle	4.0		560*	100	<0.025	<0.025	0.30	0.084
SS-7	18.0		310*	1,600	6.9	76	39	200
Tank 1-SS-1	14.0		830*	2,500	4.2	100	69	360
Tank 1-SS-2	14.0		62*	480	1.8	5.3	14	62
Tank 2-SS-1	14.0		120*	290	0.37	2.4	6.3	31
Tank 2-SS-2	14.0		330*	80	0.074	0.051	1.2	5.8
Tank 3-SS-1	14.0		480*	2,100	2.4	41	62	320
Tank 3-SS-2	14.0		75*	130	0.23	0.26	3.1	15
Soil Borings								
GP-1-15.5	15.5	July 2006	13.0	18.0	0.63	0.052	0.69	0.13
GP-1-18.0	18.0		<1.0	<1.0	0.0056	0.0082	<0.005	0.019
GP-2-12.0	12.0		600	3,600	17	180	98	440
GP-2-20.0	20.0		79	1,100	3.2	41	25	130
SB-1-9.5	9.5	April 2010	---	1,600	5.1	43	30	180
SB-1-24.5	24.5		---	<1.0	<0.005	<0.005	<0.005	<0.010
SB-1-29.5	29.5		---	<1.0	<0.005	<0.005	<0.005	<0.010
SB-2-9.5	9.5		---	2.2	0.26	<0.010	0.066	<0.020
SB-2-24.5	24.5		---	<1.0	<0.005	<0.005	<0.005	<0.010
SB-2-29.5	29.5		---	<1.0	<0.005	<0.005	<0.005	<0.010
SB-3-14.5	14.5		---	17	17	100	42	240
SB-3-24.5	24.5		---	<1.0	<0.005	0.005	<0.005	0.013
SB-3-29.5	29.5		---	<1.0	<0.005	<0.005	<0.005	<0.010
SB-4-14.5	14.5		---	1,700	13	79	28	170
SB-4-19.5	19.5		---	<1.0	<0.005	0.009	<0.005	0.026
SB-4-29.5	29.5		---	<1.0	<0.005	<0.005	<0.005	<0.010
SB-5-14.5	14.5		---	470	<0.20	0.45	6.2	37
SB-5-24.5	24.5		---	<1.0	<0.005	<0.005	<0.005	<0.010
SB-5-29.5	29.5		---	<1.0	<0.005	<0.005	<0.005	<0.010
SB-6-9.5	9.5		---	6,100	21	170	95	580
SB-6-29.5	29.5		---	<1.0	<0.005	<0.005	<0.005	<0.010
SB-6-32	32.0		---	<1.0	<0.005	<0.005	<0.005	<0.010
SB-7-9.5	9.5	---	4,000	12	46	55	360	
SB-7-29.5	29.5	---	<1.0	<0.005	<0.005	<0.005	<0.010	
SB-7-32	32.0	---	<1.0	<0.005	<0.005	<0.005	<0.010	

Table 2a
Historical Soil Analytical Data
TPH and BTEX
 Shore Acres Gas
 403 East 12th Street
 Oakland, California

Boring ID	Sample Depth (feet)	Collection Date	TPHd (mg/kg)	TPHg (mg/kg)	Benzene (mg/kg)	Toluene (mg/kg)	Ethylbenzene (mg/kg)	Total xylenes (mg/kg)
SB-8-9.5	9.5	April 2010	---	2,500	16	110	63	370
SB-8-24.5	24.5		---	<1.0	<0.005	<0.005	<0.005	<0.010
SB-8-29.5	29.5		---	<1.0	<0.005	<0.005	<0.005	<0.010
SB-9-14.5	14.5		---	390	3.0	3.0	9.1	41
SB-9-29.5	29.5		---	<1.0	<0.005	<0.005	<0.005	<0.010
SB-9-32	32.0		---	<1.0	<0.005	<0.005	<0.005	<0.010
Groundwater Wells								
MW-1-5	5	June 2011	<5.0	<1.0	<0.005	<0.005	<0.005	<0.010
MW-1-15	15		<5.0	18	0.55	<0.050	0.87	1.2
MW-1-20	20		<5.0	<1.0	<0.005	<0.005	<0.005	<0.010
MW-2-5	5		<5.0	<1.0	<0.005	<0.005	<0.005	<0.010
MW-2-10	10		<5.0	69	<0.005	<0.005	<0.005	<0.010
MW-2-15	15		<5.0	50	<0.050	0.48	3.1	19
MW-2-20	20		<5.0	<1.0	<0.005	<0.005	<0.005	<0.010
MW-3-5	5		<5.0	<1.0	<0.010	<0.010	<0.010	<0.020
MW-3-10	10		<15	840	3.4	33	20	140
MW-3-15	15		<5.0	380	3.0	4.5	7.3	41
MW-3-20	20		<5.0	<1.0	0.019	<0.005	0.006	<0.010
MW-4-5	5		<5.0	<1.0	<0.005	<0.005	<0.005	<0.010
MW-4-10	10		<15	420	1.7	2.6	9.2	51
MW-4-15	15		<5.0	3.1	0.036	0.20	0.15	0.95
MW-4-20	20		<5.0	<1.0	0.007	0.017	0.010	0.039
MW-5-5	5		<5.0	76	<0.10	<0.10	1.3	0.76
MW-5-10	10		<15	3,200	4.6	6.5	72	410
MW-5-15	15		<5.0	600	1.3	13	15	110
MW-6-5	5		<5.0	<1.0	<0.005	<0.005	<0.005	<0.010
MW-6-10	10		<5.0	5.1	0.015	<0.010	3.4	1.0
MW-6-15	15	<5.0	<1.0	<0.005	<0.005	<0.005	<0.010	
MW-6-20	20	<5.0	<1.0	<0.005	<0.005	<0.005	<0.010	
VW-1-5	5	<5.0	34	<0.005	<0.005	0.16	0.31	
VW-1-10	10	<15	85	<0.10	<0.10	2.2	0.89	
VW-1-15	15	<15	420	2.1	4.1	9.4	55	
VW-1-20	20	<5.0	<1.0	<0.005	<0.005	<0.005	<0.010	
VW-2-5	5	<5.0	<1.0	<0.005	<0.005	<0.005	<0.010	
VW-2-10	10	<5.0	130	<0.10	<0.10	2.9	15	
VW-2-15	15	<15	5,500	29	430	120	910	
VW-2-20	20	<5.0	<1.0	0.14	0.054	0.025	0.14	

Notes:

- TPHd - denotes total petroleum hydrocarbons as diesel
- TPHg - denotes total petroleum hydrocarbons as gasoline
- mg/kg - denotes milligrams per kilogram
- < - denotes less than the detection limit
- denotes no data

Table 2b
Historical Soil Analytical Data
Oxygenates and Lead Scavengers
Shore Acres Gas
403 East 12th Street
Oakland, California

Boring ID	Sample Depth (feet)	Collection Date	DIPE (mg/kg)	ETBE (mg/kg)	MTBE (mg/kg)	TAME (mg/kg)	TBA (mg/kg)	1,2-DCA (mg/kg)	EDB (mg/kg)
UST Removal Samples									
SS-D1	2	August 2009	<0.25	<0.25	<0.25	<0.25	<1.5	---	---
SS-D2	2		<0.25	<0.25	<0.25	<0.25	<1.5	---	---
SS-D3	2		<0.15	<0.15	<0.15	<0.15	<0.70	---	---
SS-D4	2		<0.090	<0.090	<0.090	<0.090	<0.50	---	---
SS-D5	2		<0.025	<0.025	<0.025	<0.025	<0.15	---	---
SS-D6	2		<0.025	<0.025	<0.025	<0.025	<0.15	---	---
SS-J1	2		<0.025	<0.025	<0.025	<0.025	<0.15	---	---
SS-Isle	4		<0.025	<0.025	<0.025	<0.025	<0.15	---	---
SS-7	18		<0.25	<0.25	<0.25	<0.25	<1.5	<0.25	<0.25
Tank 1-SS-1	14		<0.50	<0.50	<0.50	<0.50	<2.5	<0.50	<0.50
Tank 1-SS-2	14		<0.040	<0.040	0.37	<0.040	0.51	<0.040	<0.040
Tank 2-SS-1	14		<0.050	<0.050	0.18	<0.050	0.35	<0.050	<0.050
Tank 2-SS-2	14		<0.025	<0.025	0.090	<0.025	0.16	<0.025	<0.025
Tank 3-SS-1	14		<0.50	<0.50	<0.50	<0.50	<2.5	<0.50	<0.50
Tank 3-SS-2	14	<0.025	<0.025	0.19	<0.025	0.15	<0.025	<0.025	
Soil Borings									
GP-1-15.5	15.5	July 2006	<0.005	<0.005	0.029	<0.005	0.27	---	---
GP-1-18.0	18.0		<0.005	<0.005	0.54	<0.005	0.33	---	---
GP-2-12.0	12.0		<0.50	<0.50	<0.50	<0.50	<2.5	---	---
GP-2-20.0	20.0		<0.025	<0.025	0.041	<0.025	<0.15	---	---
SB-1-9.5	9.5	April 2010	<0.80	<0.80	<0.80	<0.80	<8.0	<0.80	<0.80
SB-1-24.5	24.5		<0.005	<0.005	0.11	<0.005	<0.050	<0.005	<0.005
SB-1-29.5	29.5		<0.005	<0.005	<0.005	<0.005	<0.050	<0.005	<0.005
SB-2-9.5	9.5		<0.010	<0.010	<0.010	<0.010	<0.10	<0.010	<0.010
SB-2-24.5	24.5		<0.005	<0.005	0.053	<0.005	<0.050	<0.005	<0.005
SB-2-29.5	29.5		<0.005	<0.005	<0.005	<0.005	<0.050	<0.005	<0.005
SB-3-14.5	14.5		<2.0	<2.0	<2.0	<2.0	<20	<2.0	<2.0
SB-3-24.5	24.5		<0.005	<0.005	0.10	<0.005	<0.050	<0.005	<0.005
SB-3-29.5	29.5		<0.005	<0.005	0.010	<0.005	<0.050	<0.005	<0.005
SB-4-14.5	14.5		<1.0	<1.0	<1.0	<1.0	<10	<1.0	<1.0
SB-4-19.5	19.5		<0.005	<0.005	<0.005	<0.005	<0.050	<0.005	<0.005
SB-4-29.5	29.5		<0.005	<0.005	<0.005	<0.005	<0.050	<0.005	<0.005
SB-5-14.5	14.5		<0.20	<0.20	<0.20	<0.20	<2.0	<0.20	<0.20
SB-5-24.5	24.5		<0.005	<0.005	<0.005	<0.005	<0.050	<0.005	<0.005
SB-5-29.5	29.5		<0.005	<0.005	<0.005	<0.005	<0.050	<0.005	<0.005
SB-6-9.5	9.5		<2.0	<2.0	<2.0	<2.0	<20	<2.0	<2.0
SB-6-29.5	29.5		<0.005	<0.005	0.20	<0.005	<0.050	<0.005	<0.005
SB-6-32	32.0		<0.005	<0.005	0.18	<0.005	<0.050	<0.005	<0.005
SB-7-9.5	9.5		<1.0	<1.0	4.0	<1.0	<10	<1.0	<1.0
SB-7-29.5	29.5		<0.005	<0.005	0.18	<0.005	<0.050	<0.005	<0.005
SB-7-32	32.0	<0.005	<0.005	0.11	<0.005	<0.050	<0.005	<0.005	

Table 2b
Historical Soil Analytical Data
Oxygenates and Lead Scavengers
 Shore Acres Gas
 403 East 12th Street
 Oakland, California

Boring ID	Sample Depth (feet)	Collection Date	DIPE (mg/kg)	ETBE (mg/kg)	MTBE (mg/kg)	TAME (mg/kg)	TBA (mg/kg)	1,2-DCA (mg/kg)	EDB (mg/kg)
SB-8-9.5	9.5	April 2010	<2.0	<2.0	<2.0	<2.0	<20	<2.0	<2.0
SB-8-24.5	24.5		<0.005	<0.005	0.033	<0.005	<0.050	<0.005	<0.005
SB-8-29.5	29.5		<0.005	<0.005	<0.005	<0.005	<0.050	<0.005	<0.005
SB-9-14.5	14.5		<0.20	<0.20	5.5	<0.20	<2.0	<0.20	<0.20
SB-9-29.5	29.5		<0.005	<0.005	0.090	<0.005	0.15	<0.005	<0.005
SB-9-32	32.0		<0.005	<0.005	0.11	<0.005	<0.050	<0.005	<0.005
Groundwater Wells									
MW-1-5	5	June 2011	<0.005	<0.005	0.35	<0.005	0.093	<0.005	<0.005
MW-1-15	15		<0.050	<0.050	1.1	<0.050	<0.50	<0.050	<0.050
MW-1-20	20		<0.005	<0.005	0.31	<0.005	0.58	<0.005	<0.005
MW-2-5	5		<0.005	<0.005	<0.005	<0.005	<0.050	<0.005	<0.005
MW-2-10	10		<0.050	<0.050	<0.050	<0.050	<0.50	<0.050	<0.050
MW-2-15	15		<0.050	<0.050	<0.050	<0.050	<0.50	<0.050	<0.050
MW-2-20	20		<0.005	<0.005	0.006	<0.005	<0.050	<0.005	<0.005
MW-3-5	5		<0.010	<0.010	1.5	<0.010	0.37	<0.010	<0.010
MW-3-10	10		<0.80	<0.80	1.3	<0.80	<8.0	<0.80	<0.80
MW-3-15	15		<0.20	<0.20	3.0	<0.20	<2.0	<0.20	<0.20
MW-3-20	20		<0.005	<0.005	0.036	<0.005	0.16	<0.005	<0.005
MW-4-5	5		<0.005	<0.005	<0.005	<0.005	<0.050	<0.005	<0.005
MW-4-10	10		<0.40	<0.40	<0.40	<0.40	<4.0	<0.40	<0.40
MW-4-15	15		<0.010	<0.010	<0.010	<0.010	<0.10	<0.010	<0.010
MW-4-20	20		<0.005	<0.005	<0.005	<0.005	<0.050	<0.005	<0.005
MW-5-5	5		<0.10	<0.10	<0.10	<0.10	<1.0	<0.10	<0.10
MW-5-10	10		<4.0	<4.0	<4.0	<4.0	<40	<4.0	<4.0
MW-5-15	15		<0.40	<0.40	<0.40	<0.40	<4.0	<0.40	<0.40
MW-6-5	5		<0.005	<0.005	<0.005	<0.005	<0.050	<0.005	<0.005
MW-6-10	10		<0.010	<0.010	<0.010	<0.010	<0.10	<0.010	<0.010
MW-6-15	15	<0.005	<0.005	0.026	<0.005	0.088	<0.005	<0.005	
MW-6-20	20	<0.005	<0.005	0.010	<0.005	0.37	<0.005	<0.005	
VW-1-5	5	<0.050	<0.050	<0.050	<0.050	<0.50	<0.050	<0.050	
VW-1-10	10	<0.10	<0.10	<0.10	<0.10	<1.0	<0.10	<0.10	
VW-1-15	15	<0.40	<0.40	0.59	<0.40	<4.0	<0.40	<0.40	
VW-1-20	20	<0.005	<0.005	0.009	<0.005	0.16	<0.005	<0.005	
VW-2-5	5	<0.005	<0.005	0.25	<0.005	0.14	<0.005	<0.005	
VW-2-10	10	<0.10	<0.10	0.33	<0.10	<1.0	<0.10	<0.10	
VW-2-15	15	<4.0	<4.0	<4.0	<4.0	<40	<4.0	<4.0	
VW-2-20	20	<0.005	<0.005	0.008	<0.005	0.26	<0.005	<0.005	

Notes:

mg/kg - denotes milligrams per kilogram	MTBE - denotes methyl tertiary butyl ether
< - denotes less than the detection limit	DIPE - denotes di-isopropyl ether
--- - denotes not analyzed/applicable	ETBE - denotes ethyl tertiary butyl ether
DCA - denotes dichloroethane	TAME - denotes tertiary amyl ether
EDB - denotes ethylene dibromide	TBA - denotes tertiary butyl alcohol

Table 3a
Grab Groundwater Sample Results
TPH and BTEX
 Shore Acres Gas
 403 East 12th Street
 Oakland, California

Sample ID	Collection Date	TPHd (ug/L)	TPHg (ug/L)	Benzene (ug/L)	Toluene (ug/L)	Ethyl-benzene (ug/L)	Total Xylenes (ug/L)
Excavation							
Pit Sample 1	August 2009	21,000	21,000	3,800	1,000	1,200	3,700
Direct Push Grab Groundwater Samples							
SB-1	April 2010	---	60	2.9	6.7	2.1	9.7
SB-2		---	<50	<0.5	<0.5	<0.5	<1.0
SB-3		---	170	1.5	11	4.8	27
SB-4		---	6,500	78	440	190	960
SB-5		---	<50	<0.5	<0.5	<0.5	<1.0
SB-6		---	440	<20	<20	<20	<40
SB-7		---	270	<12	<12	<12	<25
SB-8		---	<50	0.6	1.3	0.6	3.3
SB-9		---	<50	<10	<10	<10	<20

Notes:

- TPHd - denotes total petroleum hydrocarbons as diesel
- TPHg - denotes total petroleum hydrocarbons as gasoline
- ug/L - denotes micrograms per liter
- < - denotes less than the detection limit
- - denotes not analyzed/applicable

Table 3b
Grab Groundwater Sample Results
Oxygenates and Lead Scavengers

Shore Acres Gas
403 East 12th Street
Oakland, California

Sample ID	Collection Date	DIPE (ug/L)	ETBE (ug/L)	MTBE (ug/L)	TAME (ug/L)	TBA (ug/L)	1,2-DCA (ug/L)	EDB (ug/L)
Excavation								
Water	February 2000	<10	<10	15,000	39	17,000	<10	<10
Direct Push Grab Groundwater Samples								
SB-1	April 2010	<0.5	<0.5	14	<0.5	<5.0	<0.5	<0.5
SB-2		<0.5	<0.5	45	<0.5	<5.0	<0.5	<0.5
SB-3		<0.5	<0.5	110	<0.5	32	<0.5	<0.5
SB-4		<5.0	<5.0	<5.0	<5.0	<50	<5.0	<5.0
SB-5		<0.5	<0.5	0.6	<0.5	<5.0	<0.5	<0.5
SB-6		<20	<20	4,000	<20	<200	<20	<20
SB-7		<12	<12	2,500	<12	<120	<12	<12
SB-8		<0.5	<0.5	26	<0.5	98	<0.5	<0.5
SB-9		<10	<10	1,800	<10	5,300	<10	<10

Notes:

ug/L - denotes micrograms per liter	DIPE - denotes di-isopropyl ether
< - denotes less than the detection limit	ETBE - denotes ethyl tertiary butyl ether
DCA - denotes dichloroethane	TAME - denotes tertiary amyl ether
EDB - denotes ethylene dibromide	TBA - denotes tertiary butyl alcohol
MTBE - denotes methyl tertiary butyl ether	

Table 4a
Monitoring Well Data
Water Level, TPH, and BTEX
 Shore Acres Gas
 403 East 12th Street
 Oakland, California

Well ID TOC	Date Measured	Depth to Groundwater (ft bgs)	Groundwater Elevation (ft amsl)	TPHd (ug/L)	TPHg (ug/L)	Benzene (ug/L)	Toluene (ug/L)	Ethylbenzene (ug/L)	Total Xylenes (ug/L)
Monitoring Wells									
MW-1	6/23/2011	10.46	20.35	<250	23,000	4,500	820	1,700	3,800
	9/22/2011	12.13	18.68	<50	21,000	4,000	1,500	980	3,000
MW-2	6/23/2011	10.70	20.59	<250	13,000	1,000	160	370	1,600
	9/22/2011	12.42	18.87	<50	12,000	300	130	470	1,400
MW-3	6/23/2011	10.79	20.51	<250	55,000	15,000	3,600	2,000	4,300
	9/22/2011	12.60	18.70	<250	77,000	15,000	3,900	1,700	4,900
MW-4	6/23/2011	10.62	20.59	<250	47,000	3,500	7,100	2,300	11,000
	9/22/2011	12.25	18.96	<250	46,000	2,000	2,400	1,100	5,300
MW-5	6/23/2011	10.12	21.23	<250	130,000	7,100	25,000	13,000	94,000
	9/22/2011	12.53	18.82	<250	120,000	6,900	7,600	3,800	17,000
MW-6	6/23/2011	10.43	20.36	<250	11,000	2,400	120	480	840
	9/22/2011	12.10	18.69	<50	15,000	1,500	270	880	2,500
DPE Wells									
VW-1	6/28/2011	---	---	---	20,000	2,000	490	1,000	2,400
	9/22/2011	12.55	18.71	<120	39,000	3,900	610	1,400	4,600
VW-2	6/28/2011	---	---	---	33,000	3,100	2,000	790	3,500
	9/22/2011	12.50	18.90	<250	66,000	2,400	4,500	2,000	11,000

Notes:

- TOC - denotes top of casing elevation
- TPHg - denotes total petroleum hydrocarbons as gasoline
- TPHd - denotes total petroleum hydrocarbons as diesel
- ft bgs - denotes feet below top of casing
- ft amsl - denotes feet above mean sea level
- ug/L - denotes micrograms per liter.
- < - denotes less than the detection limit
- - denotes not available/applicable
- FLH - denotes floating liquid hydrocarbons
- * - denotes less than six inches of water and considered dry

Table 4b
Monitoring Well Data
Oxygenates and Lead Scavengers
 Shore Acres Gas
 403 East 12th Street
 Oakland, California

Well ID TOC	Date Measured	DIPE (ug/L)	ETBE (ug/L)	MTBE (ug/L)	TAME (ug/L)	TBA (ug/L)	1,2-DCA (ug/L)	EDB (ug/L)
Monitoring Wells								
MW-1	6/23/2011	<25	<25	3,000	<25	3,900	<25	<25
	9/22/2011	<50	<50	2,600	<50	2,500	<50	<50
MW-2	6/23/2011	<10	<10	240	<10	640	<10	<10
	9/22/2011	<5.0	<5.0	110	<5.0	260	<5.0	<5.0
MW-3	6/23/2011	<100	<100	8,200	<100	6,400	<100	<100
	9/22/2011	<100	<100	11,000	<100	2,800	<100	<100
MW-4	6/23/2011	<50	<50	<50	<50	<500	<50	<50
	9/22/2011	<25	<25	<25	<25	<250	<25	<25
MW-5	6/23/2011	<120	<120	440	<120	<1,200	<120	<120
	9/22/2011	<50	<50	670	<50	1,500	<50	<50
MW-6	6/23/2011	<25	<25	1,100	<25	4,000	<25	<25
	9/22/2011	<12	<12	600	<12	2,800	<12	<12
DPE Wells								
VW-1	6/28/2011	<25	<25	1,500	<25	5,300	<25	<25
	9/22/2011	<50	<50	640	<50	1,800	<50	<50
VW-2	6/28/2011	<25	<25	670	<25	4,100	<25	<25
	9/22/2011	<50	<50	740	<50	1,600	<50	<50

Notes:

- | | |
|--|---|
| ug/L - denotes micrograms per liter | DIPE - denotes di-isopropyl ether |
| < - denotes less than the detection limit | ETBE - denotes ethyl tertiary butyl ether |
| DCA - denotes dichloroethane | TAME - denotes tertiary amyl ether |
| EDB - denotes ethylene dibromide | TBA - denotes tertiary butyl alcohol |
| MTBE - denotes methyl tertiary butyl ether | --- denotes no data available |

APPENDICES

ENVIRONMENTAL COMPLIANCE GROUP, LLC

STANDARD OPERATING AND SAFETY AND LOSS CONTROL PROCEDURES

1.0 SOIL BORING/DRILLING SAMPLE COLLECTION AND CLASSIFICATION PROCEDURES

ECG will prepare a site-specific Health and Safety Plan as required by the Occupational Health and Safety Administration (OSHA) Standard "Hazardous Waste Operations and Emergency Response" guidelines (29 CFR.1910.120). The document will be reviewed and signed by all ECG personnel and subcontractors prior to performing work at the site.

Prior to conducting and subsurface work at the site, Underground Services Alert (USA) will be contacted to delineate subsurface utilities near the site with surface markings. In addition, the first five feet of every location will be hand cleared to a diameter larger than the diameter of the auger or probe as a further precaution against damaging underground utilities. Sites that are currently operated as gas stations will be cleared with a private utility locator prior to drilling activities.

Soil samples to be submitted for chemical analyses are collected into brass or stainless steel tubes. The tubes are placed in an 18-inch long split-barrel sampler. The split-barrel sampler is driven its entire length hydraulically or by 140-pound drop hammer. The split-barrel sampler is removed from the borehole and the tubes are removed. When the tubes are removed from the split-barrel sampler, the tubes are trimmed and capped with Teflon sheets and plastic caps or the soil is removed from the tubes and placed in other appropriate sample containers. The samples are sealed, labeled, and placed in ice under chain-of-custody to be delivered to the analytical laboratory. All samples will be kept refrigerated until their delivery to the analytical laboratory.

One soil sample collected from each split-barrel sampler is field screened with a photoionization detector (PID), flame ionization detector (FID), or other equivalent field screening meter. The soil sample is sealed in a plastic bag or other appropriate container to allow volatilization of volatile organic compounds (VOCs). The field meter is used to measure the VOC concentration in the container's headspace and is recorded on the boring logs at the appropriate depth interval.

Other soil samples collected from each split-barrel sampler are inspected and documented to identify the soil stratigraphy beneath the site and classify the soil types according to the United Soil Classification System. The soil types are recorded on boring logs with the appropriate depth interval and any pertinent field observations. Drilling and sampling equipment are steam cleaned or washed in solution and rinsed in deionized water prior to use, between sample collections and boreholes and after use.

2.0 SOIL EXCAVATION SAMPLE COLLECTION AND CLASSIFICATION PROCEDURES

Soil samples to be submitted for chemical analyses are collected into brass or stainless steel tubes or other appropriate containers. The samples are sealed, labeled, and placed in ice under chain-of-custody (COC) to be delivered to the analytical laboratory. All samples will be kept refrigerated until their delivery to the analytical laboratory.

Select soil samples are placed into a sealed plastic bag or other appropriate container and field screened using a PID, FID, or equivalent meter. Other soil samples collected are inspected and documented to identify the soil stratigraphy beneath the site and classify the soil types according to the United Soil Classification System. The soil types are recorded field notes with the appropriate depth interval and any pertinent field observations. Sampling equipment are steam cleaned or washed in solution and rinsed in deionized water prior to use, between sample collections, and after use. Soil cuttings and rinsewater are temporarily stored onsite pending laboratory analytical results and proper transport and disposal.

3.0 SAMPLE IDENTIFICATION AND COC PROCEDURES

Sample containers are labeled with job number, job name, sample collection time and date, sample collection point, and analyses requested. Sampling method, sampler's name, and any pertinent field observations are recorded on boring logs or excavation field notes. COC forms track the possession of the sample from the time of its collection until the time of its delivery to the analytical laboratory. During sample transfers, the person with custody of the samples will relinquish them to the next person by signing the COC and documenting the time and date. The analytical laboratory Quality Control/Quality Assurance (QA/QC) staff will document the receipt of the samples and confirm the analyses requested on the COC matches the sample containers and preservative used, if any. The analytical laboratory will assign unique log numbers for identification during the analyses and reporting. The log numbers will be added to the COC form and maintained in a log book maintained by the analytical laboratory.

4.0 ANALYTICAL LABORATORY QA/QC PROCEDURES

The analytical laboratory analyzes spikes, replicates, blanks, spiked blanks, and certified reference materials to verify analytical methods and results. The analytical laboratory QA/QC also includes:

- Routine instrument calibration,
- Complying with state and federal laboratory accreditation and certification programs,
- Participation in U.S. EPA performance evaluation studies,
- Standard operating procedures, and
- Multiple review of raw data and client reports

5.0 HOLLOW STEM AUGER WELL INSTALLATION

Boreholes for wells are often drilled with a truck-mounted hollow stem auger drill rig. The borehole diameter is at least 4 inches wider than the outside diameter of the well casing. Soil samples are collected and screened as described in **Section 1.0** and decontamination procedures are also the same as described in **Section 1.0**.

Wells are cased with both blank and factory-perforated Schedule 40 PVC. The factory perforations are typically 0.020 inches wide by 1.5 inch long slots, with 42 slots per foot. A PVC cap is typically installed at the bottom of the casing with stainless steel screws. No solvents or cements are used in the construction of the wells. Well stabilizers or centering devices may be installed around the casing to ensure the filter material and grout in the annulus are evenly distributed. The casing is purchased pre-cleaned or steam cleaned and washed prior to installation in the borehole.

The casing is set inside the augers and sand, gravel, or other filter material is poured into the annulus to fill the borehole from the bottom to approximately 1-2 feet above the perforations. A two foot thick bentonite plug is placed above the filter material to prevent the grout from filling the filter pack. Neat cement or sand-cement grout is poured into the annulus from the top of the bentonite plug to the surface. For wells located in parking lots or driveways, or roads, a traffic rated well box is installed around the well. For wells located in landscaped areas or fields, a stovepipe well protection device is installed around the well. Soil cuttings and rinsewater are temporarily stored onsite pending laboratory analytical results and proper transport and disposal.

6.0 MUD AND AIR ROTARY WELL INSTALLATION

Boreholes for wells can also be drilled with a truck-mounted air rotary or mud rotary drill rig. Air or mud can be used as a drill fluid to fill the borehole and prevent the borehole from caving in and remove drill cuttings. Mud or air can be chosen depending on the subsurface conditions. Soil samples are collected and screened as described in **Section 1.0** and decontamination procedures are also the same as described in **Section 1.0**.

Wells are cased with both blank and factory-perforated Schedule 40 PVC. The factory perforations are typically 0.020 inches wide by 1.5 inch long slots, with 42 slots per foot. A PVC cap is typically installed at the bottom of the casing with stainless steel screws. No solvents or cements are used in the construction of the wells. Well stabilizers or centering devices may be installed around the casing to ensure the filter material and grout in the annulus are evenly distributed. The casing is purchased pre-cleaned or steam cleaned and washed prior to installation in the borehole. Soil cuttings and drilling fluids are temporarily stored onsite pending laboratory analytical results and proper transport and disposal.

The casing is set inside the augers and sand, gravel, or other filter material is poured into the annulus to fill the borehole from the bottom to approximately 1-2 feet above the perforations. A two foot thick bentonite plug is placed above the filter material to prevent the grout from filling the filter pack. Neat cement or sand-cement grout is poured into the annulus from the top of the bentonite plug to the surface. For wells located in parking lots or driveways, or roads, a traffic rated well box is installed around the well. For wells located in landscaped areas or fields, a stovepipe well protection device is installed around the well. Soil cuttings and rinsewater are temporarily stored onsite pending laboratory analytical results and proper transport and disposal.

7.0 WELL DEVELOPMENT

After well installation, the wells are developed to remove residual drilling materials from the annulus and to improve well production by fine materials from the filter pack. Possible well development methods include pumping, surging, bailing, jetting, flushing, and air lifting. Development water is temporarily stored onsite pending laboratory analytical results and proper transport and disposal. Development equipment are steam cleaned or washed in solution and rinsed in deionized water prior to use, between sample collections and after use. After well development the wells are typically allowed to stabilize for at least 24 hours prior to purging and sampling.

8.0 LIQUID LEVEL MEASUREMENTS

Liquid level measurements are made with a water level meter and/or interface probe and disposable bailers. The probe tip attached to a measuring tape is lowered into the well and into the groundwater when a beeping tone indicates the probe is in the groundwater. The probe and measuring tape (graduated to hundredths of a foot) are slowly raised until the beeping stops and the depth to water measurement is recorded. If the meter makes a steady tone, this indicates the presence of floating liquid hydrocarbons (FLH) and the probe and measuring tape are raised until the steady tone stops and the depth to the FLH is measured. Once depth to water and depth to FLH (if present) has been recorded, the probe and measuring tape are lowered to the bottom of the well where the total depth of the well is measured. The depth to water, depth to FLH, and depth to bottom are measured again to confirm the results.

If FLH is encountered in the well, a disposable bailer is lowered into the well and brought back to the surface to confirm the thickness/presence of FLH. To minimize potential for cross contamination between wells, all measurements are done from cleanest to dirtiest well. Prior to beginning liquid level measurements, in between measurements in all wells, and at the completion of liquid level measurements, the water level probe and measuring tape is cleaned with solution (Alconox, Simple Green, or equivalent) and rinsed with deionized water.

9.0 WELL PURGING AND SAMPLING

Each well is typically purged of at least three well casing volumes of groundwater prior to collecting a groundwater sample. Purging can continue beyond three well casing volumes if field parameters including pH, temperature, electrical conductivity are not stabilizing during the purging process. If the well is purged dry before the three well casing volumes has been purged, the well is typically allowed to recharge to 80 percent of its initial water level before a groundwater sample is collected.

Purging equipment can include submersible pumps, PVC purging bailers, disposable bailers, air lift pumps, or pneumatic pumps. Prior to beginning well purging, in between each well purging, and at the completion of purging activities, all non-dedicated purging equipment is cleaned with solution (Alconox, Simple Green, or equivalent) and rinsed with deionized water.

Once the well has been purged, it will be sampled with a disposable bailer, PVC bailer, stainless steel bailer, or through a low flow groundwater pump. The groundwater sample is transferred from the bottom of the bailer to reduce volatilization to the appropriate sample container. The sample containers are specified by the analytical laboratory depending on the analyses requested. Sample containers typically include volatile organic compound (VOA) vials with septa of Teflon like materials. The groundwater sample is collected into the VOAs to minimize air bubbles and once the cap has been placed on the VOA, the VOA is tipped upside down to see if air bubbles are present in the VOA. Typically a duplicate VOA is collected from each well to be analyzed by the analytical laboratory, if warranted, to verify results.

Sample containers are labeled as described in **Section 3.0** and placed immediately in an ice chest and kept refrigerated until its delivery to the analytical laboratory. A trip blank may also be prepared by the analytical laboratory to travel with the ice chest during transport to the laboratory. Field blanks from equipment that has been decontaminated may be collected in between use in different wells to verify the decontamination procedure is effective. To minimize potential for cross contamination between wells, all wells are purged and sampled from cleanest to dirtiest well.

10.0 TEDLAR BAG SOIL VAPOR SAMPLING

Sampling equipment to collect Tedlar bag soil vapor samples includes an air pump, a Tedlar bag which can range in size from 1 to 10 liters, and 3/16-inch diameter polyethylene tubing. The air pump should be equipped with 3/16-inch hose barbs for the polyethylene tubing to attach to. The Tedlar bag must be equipped with a valve for filling and sealing the bag.

When soil vapor samples are collected from remediation equipment, the sample collection port on the remediation equipment is typically fitted with a 3/16-inch hose barb. Prior to collecting soil vapor samples from remediation equipment, air flow, temperature, and pressure or vacuum of the sampling point/remediation equipment are recorded. One end of the polyethylene tubing is connected to the sample collection port and one end is connected to the influent of the air pump, creating an air tight seal. The air pump is turned on and soil vapor from the sample collection port is pumped through the air pump for at least one minute. The air pump is turned off and one end of another piece of polyethylene tubing is connected to the effluent of the air pump and one end is connected to the valve on the Tedlar bag. The valve is opened and the air pump is turned on filling the Tedlar bag with the soil vapor sample until the bag has reached 75% capacity, when the valve on the Tedlar bag is closed and the air pump is turned off.

Tedlar bags are labeled as described in **Section 3.0** and placed immediately in an empty ice chest and kept dry and unrefrigerated until its delivery to the analytical laboratory. After each soil vapor sample collection, the air pump is turned on for five minutes to allow ambient air to clear the air pump and polyethylene tubing.

11.0 SUMMA CANISTER SOIL VAPOR SAMPLING

Sampling equipment to collect Summa canister soil vapor samples includes a sterilized Summa stainless steel canister under vacuum, ¼-inch diameter polyethylene tubing, and a laboratory calibrated flow meter, if required.

When soil vapor samples are collected from remediation equipment, the sample collection port on the remediation equipment is typically fitted with brass connection with silicone septa that has been threaded into a tapped hole on the piping network. Prior to collecting soil vapor samples from remediation equipment, air flow, temperature, and pressure or vacuum of the sampling point/remediation equipment are recorded. One end of the polyethylene tubing is connected to the brass sample collection port and one end is connected to the canister valve or flow meter, creating an air tight seal. Prior to collecting the soil vapor sample, the valve on the Summa canister is opened to verify the Summa canister has the required vacuum which is recorded. The sample valve or flow meter is opened and the soil vapor sample is collected into the Summa canister and the sample valve is closed and the final vacuum reading (typically greater than 5 inches per square inch) on the Summa canister is recorded.

Summa canisters are labeled as described in **Section 3.0** and placed immediately in an empty ice chest and kept dry and unrefrigerated until its delivery to the analytical laboratory.

12.0 SYRINGE SOIL VAPOR SAMPLING

Sampling equipment to collect syringe soil vapor samples includes a sterilized, 100 cubic centimeter, gas tight syringe and silicone septa.

When soil vapor samples are collected from remediation equipment, the sample collection port on the remediation equipment is typically fitted with brass connection with silicone septa that has been threaded into a tapped hole on the piping network. Prior to collecting soil vapor samples from remediation equipment, air flow, temperature, and pressure or vacuum of the sampling point/remediation equipment are recorded. The syringe is inserted into the silicone septa and the plunger is purged or pumped at least three times. The sample is collected the fourth time the syringe plunger is extracted and the syringe is removed from the sample collection port and the needle on the syringe is capped with a rubber stopper.

Syringes are labeled as described in **Section 3.0** and placed immediately in an empty ice chest and kept dry and unrefrigerated until its delivery to the analytical laboratory.

13.0 TEDLAR BAG SOIL VAPOR SURVEY, TEMPORARY SAMPLING POINTS

Sampling equipment to collect Tedlar bag soil vapor survey samples includes an air pump, a Tedlar bag which can range in size from 1 to 10 liters, 3/16-inch diameter polyethylene tubing, and possibly a soil vapor probe. The air pump should be equipped with 3/16-inch hose barbs for the polyethylene tubing to attach to. The Tedlar bag must be equipped with a valve for filling and sealing the bag.

A temporary borehole is advanced using either a slam bar or a direct push drill rig. In the case of the slam bar, once the borehole has been created, a temporary soil vapor probe is inserted into the borehole and advanced with a slide hammer or other physical force two additional feet. A bentonite seal is then placed in the borehole above the soil vapor probe to create an air tight seal and prevent ambient air from entering the sample collection space. In the case of the direct push drill rig, the sampling rod is advanced to the desired depth with a 6-inch retractable vapor screen at the tip. The sample screen on the 6-inch vapor screen is removed and a bentonite seal is then placed in the borehole above the soil vapor probe to create an air tight seal and prevent ambient air from entering the sample collection space.

Once the bentonite seal has set, at least one hour, the soil vapor survey samples are collected into Tedlar bags as described in **Section 10.0**. Tedlar bags are labeled as described in **Section 3.0** and placed immediately in an empty ice chest and kept dry and unrefrigerated until its delivery to the analytical laboratory. After each soil vapor sample collection, the air pump is turned on for five minutes to allow ambient air to clear the air pump and polyethylene tubing.

13.0 TEDLAR BAG SOIL VAPOR SURVEY, TEMPORARY AND REPEATABLE SAMPLING POINTS

Sampling equipment to collect Tedlar bag soil vapor survey samples includes an air pump, a Tedlar bag which can range in size from 1 to 10 liters, 3/16-inch diameter polyethylene tubing, and possibly a soil vapor probe. The air pump should be equipped with 3/16-inch hose barbs for the polyethylene tubing to attach to. The Tedlar bag must be equipped with a valve for filling and sealing the bag.

13.1 TEMPORARY SAMPLING POINTS

A temporary borehole is advanced using either a slam bar or a direct push drill rig. In the case of the slam bar, once the borehole has been created, a temporary soil vapor probe is inserted into the borehole and advanced with a slide hammer or other physical force two additional feet. A bentonite seal is then placed in the borehole above the soil vapor probe to create an air tight seal and prevent ambient air from entering the sample collection space. In the case of the direct push drill rig, the sampling rod is advanced to the desired depth with a 6-inch retractable vapor screen at the tip. The sample screen on the 6-inch vapor screen is removed and a bentonite seal is then placed in the borehole above the soil vapor probe to create an air tight seal and prevent ambient air from entering the sample collection space.

Once the bentonite seal has set, at least one hour, the soil vapor survey samples are collected into Tedlar bags as described in **Section 10.0**. Tedlar bags are labeled as described in **Section 3.0** and placed immediately in an empty ice chest and kept dry and unrefrigerated until its delivery to the analytical laboratory. After each soil vapor sample collection, the air pump is turned on for five minutes to allow ambient air to clear the air pump and polyethylene tubing.

13.2 REPEATABLE SAMPLING POINTS

A borehole is advanced using either a hand auger or a drill rig. A 6-inch slotted probe with caps on both ends is placed in the borehole. A Swagelok fitting is attached to one end cap and 3/16-inch diameter Nylon tubing is attached to the Swagelok fitting. A one foot sand pack is placed around the probe and the remainder of the borehole is sealed with a layer of dry bentonite powder, followed by a layer of bentonite chips, and an additional layer of dry bentonite powder. A well box is placed on the surface of the repeatable sampling point and the excess Nylon tubing is placed inside the well box.

Soil vapor survey samples will be collected at least one week after probe installation. In addition, soil vapor survey samples will only be collected after five consecutive precipitation free days and after any onsite irrigation has been suspended.

The soil vapor survey samples are collected into Tedlar bags as described in **Section 10.0** or Summa canisters as described in **Section 11.0**. Tedlar bags or Summa canisters are labeled as described in **Section 3.0** and placed immediately in an empty ice chest and kept dry and unrefrigerated until its delivery to the analytical laboratory. After each soil vapor sample collection, the air pump is turned on for five minutes to allow ambient air to clear the air pump and polyethylene tubing.

argon laboratories

07 October 2011

Mike Sgurakis
Environmental Compliance Group, LLC
270 Vintage Drive
Turlock, CA 95382

RE: Shore Acres Gas Project Data

Enclosed are the results for sample(s) received on 09/23/11 16:18 by Argon Laboratories. The sample(s) were analyzed according to instructions in accompanying chain-of-custody. Results are summarized on the following pages.

Please see quality control report for a summary of QC data pertaining to this project.

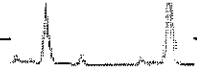
The sample(s) will be stored for 30 days after completion of analysis, then disposed of in accordance with State and Federal regulations. Sample(s) may be archived by prior arrangement.

Thank you for the opportunity to service the needs of your company.

Sincerely,



Hiram Cueto
Lab Manager

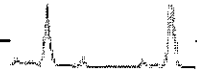


Environmental Compliance Group, LLC 270 Vintage Drive Turlock, CA 95382	Project Number: GHA.19009 Project Name: Shore Acres Gas Project Manager: Mike Sgourakis	Work Order No.: L109079
---	---	----------------------------

Total Petroleum Hydrocarbons @ Diesel

Analyte	Result	Reporting Limit	Units	Dilution	Analyzed	Method	Notes
MW-1 (L109079-01) Water Sampled: 22-Sep-11 12:30 Received: 23-Sep-11 16:18							
Diesel	ND	50	ug/L	1	27-Sep-11	EPA 8015Mod	
Surr. Rec.:		86 %			"	"	
MW-2 (L109079-02) Water Sampled: 22-Sep-11 09:50 Received: 23-Sep-11 16:18							
Diesel	ND	50	ug/L	1	27-Sep-11	EPA 8015Mod	
Surr. Rec.:		86 %			"	"	
MW-3 (L109079-03) Water Sampled: 22-Sep-11 11:48 Received: 23-Sep-11 16:18							
Diesel	ND	250	ug/L	5	27-Sep-11	EPA 8015Mod	
Surr. Rec.:		90 %			"	"	
MW-4 (L109079-04) Water Sampled: 22-Sep-11 09:30 Received: 23-Sep-11 16:18							
Diesel	ND	250	ug/L	5	27-Sep-11	EPA 8015Mod	
Surr. Rec.:		89 %			"	"	
MW-5 (L109079-05) Water Sampled: 22-Sep-11 10:24 Received: 23-Sep-11 16:18							
Diesel	ND	250	ug/L	5	27-Sep-11	EPA 8015Mod	
Surr. Rec.:		90 %			"	"	
MW-6 (L109079-06) Water Sampled: 22-Sep-11 12:07 Received: 23-Sep-11 16:18							
Diesel	ND	50	ug/L	1	27-Sep-11	EPA 8015Mod	
Surr. Rec.:		84 %			"	"	
EW-1 (L109079-07) Water Sampled: 22-Sep-11 11:05 Received: 23-Sep-11 16:18							
Diesel	ND	120	ug/L	2.5	27-Sep-11	EPA 8015Mod	
Surr. Rec.:		86 %			"	"	

Approved By
Argon Laboratories, Inc. California D.O.H.S. Cert. #2359

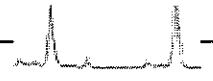


Environmental Compliance Group, LLC 270 Vintage Drive Turlock, CA 95382	Project Number: GHA.19009 Project Name: Shore Acres Gas Project Manager: Mike Sgourakis	Work Order No.: L109079
---	---	----------------------------

Total Petroleum Hydrocarbons @ Diesel

Analyte	Result	Reporting Limit	Units	Dilution	Analyzed	Method	Notes
EW-2 (L109079-08) Water Sampled: 22-Sep-11 10:30 Received: 23-Sep-11 16:18							
Diesel	ND	250	ug/L	5	27-Sep-11	EPA 8015Mod	
Surr. Rec.:		93 %			"	"	

Approved By
Argon Laboratories, Inc. California D.O.H.S. Cert. #2359



Environmental Compliance Group, LLC
 270 Vintage Drive
 Turlock, CA 95382

Project Number: GHA.19009
 Project Name: Shore Acres Gas
 Project Manager: Mike Sgourakis

Work Order No.:
 L109079

Total Petroleum Hydrocarbons @ Gasoline

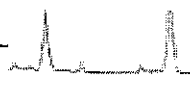
Analyte	Result	Reporting Limit	Units	Dilution	Analyzed	Method	Notes
MW-1 (L109079-01) Water Sampled: 22-Sep-11 12:30 Received: 23-Sep-11 16:18							
Total Petroleum Hydrocarbons @ Gasoline	21000	1000	ug/L	20	28-Sep-11	8015M	
Surr. Rec.:		94 %			"	"	
MW-2 (L109079-02) Water Sampled: 22-Sep-11 09:50 Received: 23-Sep-11 16:18							
Total Petroleum Hydrocarbons @ Gasoline	12000	500	ug/L	10	28-Sep-11	8015M	
Surr. Rec.:		104 %			"	"	
MW-3 (L109079-03) Water Sampled: 22-Sep-11 11:48 Received: 23-Sep-11 16:18							
Total Petroleum Hydrocarbons @ Gasoline	77000	2500	ug/L	50	28-Sep-11	8015M	
Surr. Rec.:		102 %			"	"	
MW-4 (L109079-04) Water Sampled: 22-Sep-11 09:30 Received: 23-Sep-11 16:18							
Total Petroleum Hydrocarbons @ Gasoline	46000	2500	ug/L	50	28-Sep-11	8015M	
Surr. Rec.:		107 %			"	"	
MW-5 (L109079-05) Water Sampled: 22-Sep-11 10:24 Received: 23-Sep-11 16:18							
Total Petroleum Hydrocarbons @ Gasoline	120000	5000	ug/L	100	28-Sep-11	8015M	
Surr. Rec.:		100 %			"	"	
MW-6 (L109079-06) Water Sampled: 22-Sep-11 12:07 Received: 23-Sep-11 16:18							
Total Petroleum Hydrocarbons @ Gasoline	15000	500	ug/L	10	28-Sep-11	8015M	
Surr. Rec.:		103 %			"	"	
EW-1 (L109079-07) Water Sampled: 22-Sep-11 11:05 Received: 23-Sep-11 16:18							
Total Petroleum Hydrocarbons @ Gasoline	39000	2500	ug/L	50	28-Sep-11	8015M	
Surr. Rec.:		106 %			"	"	

Approved By

Argon Laboratories, Inc. California D.O.H.S. Cert. #2359

Environmental Compliance Group, LLC
 270 Vintage Drive
 Turlock, CA 95382

Project Number: GHA.19009
 Project Name: Shore Acres Gas
 Project Manager: Mike Sgourakis



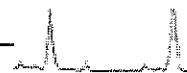
Work Order No.:
 L109079

Total Petroleum Hydrocarbons @ Gasoline

Analyte	Result	Reporting Limit	Units	Dilution	Analyzed	Method	Notes
EW-2 (L109079-08) Water Sampled: 22-Sep-11 10:30 Received: 23-Sep-11 16:18							
Total Petroleum Hydrocarbons @ Gasoline	66000	5000	ug/L	100	28-Sep-11	8015M	
Surr. Rec.:		<i>108 %</i>			"	"	

Approved By

Argon Laboratories, Inc. California D.O.H.S. Cert. #2359



Environmental Compliance Group, LLC
270 Vintage Drive
Turlock, CA 95382

Project Number: GHA.19009
Project Name: Shore Acres Gas
Project Manager: Mike Sgourakis

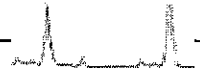
Work Order No.:
L109079

Volatile Organic Compounds by EPA Method 8260B

Analyte	Result	Reporting Limit	Units	Dilution	Analyzed	Method	Notes
MW-1 (L109079-01) Water Sampled: 22-Sep-11 12:30 Received: 23-Sep-11 16:18							
Benzene	4000	50	ug/L	100	05-Oct-11	8260B	
Toluene	1500	50	"	"	"	"	
Xylenes, total	3000	100	"	"	"	"	
Ethylbenzene	980	50	"	"	"	"	
t-Butanol	2500	500	"	"	"	"	
Methyl tert-Butyl Ether	2600	50	"	"	"	"	
Di-Isopropyl Ether	ND	50	"	"	"	"	
Ethyl tert-Butyl Ether	ND	50	"	"	"	"	
tert-Amyl Methyl Ether	ND	50	"	"	"	"	
1,2-Dichloroethane	ND	50	"	"	"	"	
1,2-Dibromoethane (EDB)	ND	50	"	"	"	"	
Surr. Rec.:		110%			"	"	
MW-2 (L109079-02) Water Sampled: 22-Sep-11 09:50 Received: 23-Sep-11 16:18							
Benzene	300	5.0	ug/L	10	05-Oct-11	8260B	
Toluene	130	5.0	"	"	"	"	
Xylenes, total	1400	10	"	"	"	"	
Ethylbenzene	470	5.0	"	"	"	"	
t-Butanol	260	50	"	"	"	"	
Methyl tert-Butyl Ether	110	5.0	"	"	"	"	
Di-Isopropyl Ether	ND	5.0	"	"	"	"	
Ethyl tert-Butyl Ether	ND	5.0	"	"	"	"	
tert-Amyl Methyl Ether	ND	5.0	"	"	"	"	
1,2-Dichloroethane	ND	5.0	"	"	"	"	
1,2-Dibromoethane (EDB)	ND	5.0	"	"	"	"	
Surr. Rec.:		111%			"	"	

Approved By

Argon Laboratories, Inc. California D.O.H.S. Cert. #2359



Environmental Compliance Group, LLC
270 Vintage Drive
Turlock, CA 95382

Project Number: GHA.19009
Project Name: Shore Acres Gas
Project Manager: Mike Sgourakis

Work Order No.:
L109079

Volatile Organic Compounds by EPA Method 8260B

Analyte	Result	Reporting Limit	Units	Dilution	Analyzed	Method	Notes
---------	--------	-----------------	-------	----------	----------	--------	-------

MW-3 (L109079-03) Water Sampled: 22-Sep-11 11:48 Received: 23-Sep-11 16:18

Benzene	15000	100	ug/L	200	05-Oct-11	8260B	
Toluene	3900	100	"	"	"	"	
Xylenes, total	4900	200	"	"	"	"	
Ethylbenzene	1700	100	"	"	"	"	
t-Butanol	2800	1000	"	"	"	"	
Methyl tert-Butyl Ether	11000	100	"	"	"	"	
Di-Isopropyl Ether	ND	100	"	"	"	"	
Ethyl tert-Butyl Ether	ND	100	"	"	"	"	
tert-Amyl Methyl Ether	ND	100	"	"	"	"	
1,2-Dichloroethane	ND	100	"	"	"	"	
1,2-Dibromoethane (EDB)	ND	100	"	"	"	"	

Surr. Rec.: 112 %

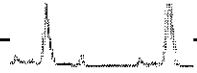
MW-4 (L109079-04) Water Sampled: 22-Sep-11 09:30 Received: 23-Sep-11 16:18

Benzene	2000	25	ug/L	50	05-Oct-11	8260B	
Toluene	2400	25	"	"	"	"	
Xylenes, total	5300	50	"	"	"	"	
Ethylbenzene	1100	25	"	"	"	"	
t-Butanol	ND	250	"	"	"	"	
Methyl tert-Butyl Ether	ND	25	"	"	"	"	
Di-Isopropyl Ether	ND	25	"	"	"	"	
Ethyl tert-Butyl Ether	ND	25	"	"	"	"	
tert-Amyl Methyl Ether	ND	25	"	"	"	"	
1,2-Dichloroethane	ND	25	"	"	"	"	
1,2-Dibromoethane (EDB)	ND	25	"	"	"	"	

Surr. Rec.: 110 %

Approved By

Argon Laboratories, Inc. California D.O.H.S. Cert. #2359



Environmental Compliance Group, LLC
270 Vintage Drive
Turlock, CA 95382

Project Number: GHA.19009
Project Name: Shore Acres Gas
Project Manager: Mike Sgourakis

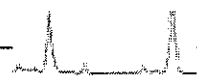
Work Order No.:
L109079

Volatile Organic Compounds by EPA Method 8260B

Analyte	Result	Reporting Limit	Units	Dilution	Analyzed	Method	Notes
MW-5 (L109079-05) Water Sampled: 22-Sep-11 10:24 Received: 23-Sep-11 16:18							
Benzene	6900	50	ug/L	100	05-Oct-11	8260B	
Toluene	7600	50	"	"	"	"	
Xylenes, total	17000	100	"	"	"	"	
Ethylbenzene	3800	50	"	"	"	"	
t-Butanol	1500	500	"	"	"	"	
Methyl tert-Butyl Ether	670	50	"	"	"	"	
Di-Isopropyl Ether	ND	50	"	"	"	"	
Ethyl tert-Butyl Ether	ND	50	"	"	"	"	
tert-Amyl Methyl Ether	ND	50	"	"	"	"	
1,2-Dichloroethane	ND	50	"	"	"	"	
1,2-Dibromoethane (EDB)	ND	50	"	"	"	"	
Surr. Rec.:		110%			"	"	
MW-6 (L109079-06) Water Sampled: 22-Sep-11 12:07 Received: 23-Sep-11 16:18							
Benzene	1500	12	ug/L	25	05-Oct-11	8260B	
Toluene	270	12	"	"	"	"	
Xylenes, total	2500	25	"	"	"	"	
Ethylbenzene	880	12	"	"	"	"	
t-Butanol	2800	120	"	"	"	"	
Methyl tert-Butyl Ether	600	12	"	"	"	"	
Di-Isopropyl Ether	ND	12	"	"	"	"	
Ethyl tert-Butyl Ether	ND	12	"	"	"	"	
tert-Amyl Methyl Ether	ND	12	"	"	"	"	
1,2-Dichloroethane	ND	12	"	"	"	"	
1,2-Dibromoethane (EDB)	ND	12	"	"	"	"	
Surr. Rec.:		118%			"	"	

Approved By

Argon Laboratories, Inc. California D.O.H.S. Cert. #2359



Environmental Compliance Group, LLC
270 Vintage Drive
Turlock, CA 95382

Project Number: GHA.19009
Project Name: Shore Acres Gas
Project Manager: Mike Sgourakis

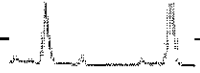
Work Order No.:
L109079

Volatile Organic Compounds by EPA Method 8260B

Analyte	Result	Reporting Limit	Units	Dilution	Analyzed	Method	Notes
EW-1 (L109079-07) Water Sampled: 22-Sep-11 11:05 Received: 23-Sep-11 16:18							
Benzene	3900	50	ug/L	100	05-Oct-11	8260B	
Toluene	610	50	"	"	"	"	
Xylenes, total	4600	100	"	"	"	"	
Ethylbenzene	1400	50	"	"	"	"	
t-Butanol	1800	500	"	"	"	"	
Methyl tert-Butyl Ether	640	50	"	"	"	"	
Di-Isopropyl Ether	ND	50	"	"	"	"	
Ethyl tert-Butyl Ether	ND	50	"	"	"	"	
tert-Amyl Methyl Ether	ND	50	"	"	"	"	
1,2-Dichloroethane	ND	50	"	"	"	"	
1,2-Dibromoethane (EDB)	ND	50	"	"	"	"	
Surr. Rec.:		112 %			"	"	
EW-2 (L109079-08) Water Sampled: 22-Sep-11 10:30 Received: 23-Sep-11 16:18							
Benzene	2400	50	ug/L	100	05-Oct-11	8260B	
Toluene	4500	50	"	"	"	"	
Xylenes, total	11000	100	"	"	"	"	
Ethylbenzene	2000	50	"	"	"	"	
t-Butanol	1600	500	"	"	"	"	
Methyl tert-Butyl Ether	740	50	"	"	"	"	
Di-Isopropyl Ether	ND	50	"	"	"	"	
Ethyl tert-Butyl Ether	ND	50	"	"	"	"	
tert-Amyl Methyl Ether	ND	50	"	"	"	"	
1,2-Dichloroethane	ND	50	"	"	"	"	
1,2-Dibromoethane (EDB)	ND	50	"	"	"	"	
Surr. Rec.:		114 %			"	"	

Approved By

Argon Laboratories, Inc. California D.O.H.S. Cert. #2359



Environmental Compliance Group, LLC
 270 Vintage Drive
 Turlock, CA 95382

Project Number: GHA.19009
 Project Name: Shore Acres Gas
 Project Manager: Mike Sgourakis

Work Order No.:
 L109079

Total Petroleum Hydrocarbons @ Gasoline - Quality Control

Argon Laboratories

Analyte	Result	Reporting Limit	Units	Spike Level	Source Result	%REC	%REC Limits	RPD	RPD Limit	Notes
---------	--------	-----------------	-------	-------------	---------------	------	-------------	-----	-----------	-------

Batch L101720 - EPA 5030B

Blank (L101720-BLK1)

Prepared: 09/27/11 Analyzed: 09/28/11

Surrogate: <i>a,a,a</i> -Trifluorotoluene	48.0		ug/L	50		96	70-130			
Total Petroleum Hydrocarbons @ Gasoline	ND	50	"							

LCS (L101720-BS1)

Prepared: 09/27/11 Analyzed: 09/28/11

Total Petroleum Hydrocarbons @ Gasoline	991		ug/L	1000		99	80-120			
---	-----	--	------	------	--	----	--------	--	--	--

LCS Dup (L101720-BSD1)

Prepared: 09/27/11 Analyzed: 09/28/11

Total Petroleum Hydrocarbons @ Gasoline	982		ug/L	1000		98	80-120	0.9	20	
---	-----	--	------	------	--	----	--------	-----	----	--

Matrix Spike (L101720-MS1)

Source: L109079-06

Prepared: 09/27/11 Analyzed: 09/28/11

Total Petroleum Hydrocarbons @ Gasoline	1040		ug/L	1000	150	89	70-130			
---	------	--	------	------	-----	----	--------	--	--	--

Matrix Spike Dup (L101720-MSD1)

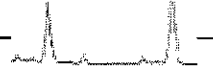
Source: L109079-06

Prepared: 09/27/11 Analyzed: 09/28/11

Total Petroleum Hydrocarbons @ Gasoline	1070		ug/L	1000	150	92	70-130	3	20	
---	------	--	------	------	-----	----	--------	---	----	--

Approved By

Argon Laboratories, Inc. California D.O.H.S. Cert. #2359



Environmental Compliance Group, LLC
270 Vintage Drive
Turlock, CA 95382

Project Number: GHA.19009
Project Name: Shore Acres Gas
Project Manager: Mike Sgourakis

Work Order No.:
L109079

Volatile Organic Compounds by EPA Method 8260B - Quality Control

Argon Laboratories

Analyte	Result	Reporting Limit	Units	Spike Level	Source Result	%REC	%REC Limits	RPD	RPD Limit	Notes
---------	--------	-----------------	-------	-------------	---------------	------	-------------	-----	-----------	-------

Batch L101736 - EPA 5030B

Blank (L101736-BLK1)

Prepared & Analyzed: 10/05/11

Surrogate: Fluorobenzene	54.5		ug/L	50		109	70-130			
Benzene	ND	0.5	"							
Toluene	ND	0.5	"							
Xylenes, total	ND	1.0	"							
Ethylbenzene	ND	0.5	"							
t-Butanol	ND	5.0	"							
Methyl tert-Butyl Ether	ND	0.5	"							
Di-Isopropyl Ether	ND	0.5	"							
Ethyl tert-Butyl Ether	ND	0.5	"							
tert-Amyl Methyl Ether	ND	0.5	"							
1,2-Dichloroethane	ND	0.5	"							
1,2-Dibromoethane (EDB)	ND	0.5	"							

LCS (L101736-BS1)

Prepared & Analyzed: 10/05/11

Methyl tert-Butyl Ether	29.3		ug/L	25		117	80-120			
-------------------------	------	--	------	----	--	-----	--------	--	--	--

LCS Dup (L101736-BSD1)

Prepared & Analyzed: 10/05/11

Methyl tert-Butyl Ether	29.4		ug/L	25		118	80-120	0.3	20	
-------------------------	------	--	------	----	--	-----	--------	-----	----	--

Matrix Spike (L101736-MS1)

Source: L109080-06

Prepared & Analyzed: 10/05/11

Toluene	28.2		ug/L	25	ND	113	70-130			
---------	------	--	------	----	----	-----	--------	--	--	--

Matrix Spike Dup (L101736-MSD1)

Source: L109080-06

Prepared & Analyzed: 10/05/11

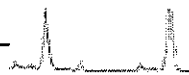
Toluene	29.2		ug/L	25	ND	117	70-130	3	20	
---------	------	--	------	----	----	-----	--------	---	----	--

Approved By

Argon Laboratories, Inc. California D.O.H.S. Cert. #2359

Environmental Compliance Group, LLC
270 Vintage Drive
Turlock, CA 95382

Project Number: GHA.19009
Project Name: Shore Acres Gas
Project Manager: Mike Sgourakis



Work Order No.:
L109079

Notes and Definitions

- DET Analyte DETECTED
- ND Analyte NOT DETECTED at or above the reporting limit
- NR Not Reported
- dry Sample results reported on a dry weight basis
- RPD Relative Percent Difference

Approved By
Argon Laboratories, Inc. California D.O.H.S. Cert. #2359

PURGE/DEVELOPMENT FORM

PROJECT NAME: Shore Acres Gas PROJECT NUMBER: GHA.19009
 PROJECT MANAGER: ms TASK NUMBER: _____
 SITE ADDRESS: 403 East 12th Street, Oakland, CA

WELL ID: MW-1 TYPE OF WELL: Monitoring

WATER COLUMN DATA: (feet)
 Well Total Depth: 19.94
 Depth to Water: 12.13
 Water Column Length: 7.81

WELL DIAMETER:
 2-inch:
 4-inch: _____
 6-inch: _____

PURGE VOLUME CALCULATION:
 Water Column Length x Multiplier x No. Volumes = Purge Volume

$$\frac{7.81}{\text{Water Column Length}} \times \frac{0.17}{\text{Multiplier}} \times \frac{3}{\text{No. Volumes}} = \frac{4.0}{\text{Purge Volume}}$$

MULTIPLIER DATA:
 Multiplier for Schedule 40 PVC; Gallons/Linear Foot Based on Casing Diameter:

2-inch:	0.17
4-inch:	0.65
6-inch:	1.5

PURGE METHOD: Disposable Bailer
 _____ PVC Bailer
 _____ Submersible Pump
 _____ Other

SAMPLE METHOD: Disposable Bailer
 _____ Pump:
 _____ Other:

TIME	VOLUME PURGED (gal)	pH	TEMP. (°C)	COND. (uS/cm)	DO (mg/l)	ORP (mV)	COMMENTS
1217	1.5	6.85	19.4	1087			
1221	2.75	6.85	19.4	1081			
1225	4.0	6.87	19.4	1074			
1230							sample

FIELD TECHNICIAN: DWA
 DATE: 9/22/11

PURGE/DEVELOPMENT FORM

PROJECT NAME: Shore Acres Gas PROJECT NUMBER: GHA.19009
 PROJECT MANAGER: ms TASK NUMBER: _____
 SITE ADDRESS: 403 East 12th Street, Oakland, CA

WELL ID: MW-4 TYPE OF WELL: Monitoring

WATER COLUMN DATA: (feet)
 Well Total Depth: 18.00
 Depth to Water: 12.25
 Water Column Length: 6.55

WELL DIAMETER:
 2-inch:
 4-inch: _____
 6-inch: _____

PURGE VOLUME CALCULATION:
 Water Column Length x Multiplier x No. Volumes = Purge Volume

6.55 x 0.17 x 3 = 3.4
 Water Column Length Multiplier No. Volumes Purge Volume

MULTIPLIER DATA:
 Multiplier for Schedule 40 PVC; Gallons/Linear Foot Based on Casing Diameter:

2-inch:	0.17
4-inch:	0.65
6-inch:	1.5

PURGE METHOD: Disposable Bailer
 _____ PVC Bailer
 _____ Submersible Pump
 _____ Other

SAMPLE METHOD: Disposable Bailer
 _____ Pump:
 _____ Other:

TIME	VOLUME PURGED (gal)	pH	TEMP. (°C)	COND. (uS/cm)	DO (mg/l)	ORP (mV)	COMMENTS
0919	1.25	7.80	20.8	852			
0923	2.5	7.31	21.0	824			
0927	3.5	7.16	21.2	830			
0930							sample

FIELD TECHNICIAN: Dus
 DATE: 9/22/14

PURGE/DEVELOPMENT FORM

PROJECT NAME: Shore Acres Gas **PROJECT NUMBER:** GHA.19009
PROJECT MANAGER: ms **TASK NUMBER:** _____
SITE ADDRESS: 403 East 12th Street, Oakland, CA

WELL ID: MW-5 **TYPE OF WELL:** Monitoring

WATER COLUMN DATA: **WELL DIAMETER:**
 Well Total Depth: 18.83 ^(feet) 2-inch:
 Depth to Water: 12.53 4-inch: _____
 Water Column Length: 6.30 6-inch: _____

PURGE VOLUME CALCULATION:
 Water Column Length x Multiplier x No. Volumes = Purge Volume

$$\frac{6.30}{\text{Water Column Length}} \times \frac{0.17}{\text{Multiplier}} \times \frac{3}{\text{No. Volumes}} = \frac{3.3}{\text{Purge Volume}}$$

MULTIPLIER DATA:
 Multiplier for Schedule 40 PVC; Gallons/Linear Foot Based on Casing Diameter:
 2-inch: 0.17
 4-inch: 0.65
 6-inch: 1.5

PURGE METHOD: **SAMPLE METHOD:**
 Disposable Bailer Disposable Bailer
 PVC Bailer _____ Pump: _____
 Submersible Pump _____ Other: _____
 Other _____

TIME	VOLUME PURGED (gal)	pH	TEMP. (°C)	COND. (uS/cm)	DO (mg/l)	ORP (mV)	COMMENTS
1017	1.25	6.86	21.6	1245			
1019	2.5	6.83	21.2	1299			
1021	3.15	6.81	22.0	1342			
1024							Sample

FIELD TECHNICIAN: DWT
DATE: 9/24/17

PURGE/DEVELOPMENT FORM

PROJECT NAME: Shore Acres Gas PROJECT NUMBER: GHA.19009
 PROJECT MANAGER: ms TASK NUMBER: _____
 SITE ADDRESS: 403 East 12th Street, Oakland, CA

WELL ID: MW-6 TYPE OF WELL: Monitoring

WATER COLUMN DATA: Well Total Depth: 19.92 ^(feet)
 Depth to Water: 17.10
 Water Column Length: 2.82

WELL DIAMETER:
 2-inch:
 4-inch: _____
 6-inch: _____

PURGE VOLUME CALCULATION:
 Water Column Length x Multiplier x No. Volumes = Purge Volume

$$\frac{2.82}{\text{Water Column Length}} \times \frac{0.17}{\text{Multiplier}} \times \frac{3}{\text{No. Volumes}} = \frac{4.0}{\text{Purge Volume}}$$

MULTIPLIER DATA:
 Multiplier for Schedule 40 PVC; Gallons/Linear Foot Based on Casing Diameter:

2-inch:	0.17
4-inch:	0.65
6-inch:	1.5

PURGE METHOD: Disposable Bailer
 PVC Bailer
 Submersible Pump
 Other _____

SAMPLE METHOD: Disposable Bailer
 Pump: _____
 Other: _____

TIME	VOLUME PURGED (gal)	pH	TEMP. (°C)	COND. (uS/cm)	DO (mg/l)	ORP (mV)	COMMENTS
1157	1.5	6.85	19.1	1157			
1200	2.75	6.80	19.0	1166			
1204	4.0	6.81	18.9	1164			
1207							

FIELD TECHNICIAN: Dun
 DATE: at 1/11

PURGE/DEVELOPMENT FORM

PROJECT NAME: Shore Acres Gas **PROJECT NUMBER:** GHA.19009
PROJECT MANAGER: ms **TASK NUMBER:** _____
SITE ADDRESS: 403 East 12th Street, Oakland, CA

WELL ID: EW-1 **TYPE OF WELL:** Monitoring

WATER COLUMN DATA: (feet)
 Well Total Depth: 19.73
 Depth to Water: 12.55
 Water Column Length: 7.18

WELL DIAMETER:
 2-inch: _____
 4-inch: _____
 6-inch: _____

PURGE VOLUME CALCULATION:
 Water Column Length x Multiplier x No. Volumes = Purge Volume

$$\frac{7.18}{\text{Water Column Length}} \times \frac{0.65}{\text{Multiplier}} \times \frac{3}{\text{No. Volumes}} = \frac{14}{\text{Purge Volume}}$$

MULTIPLIER DATA:
 Multiplier for Schedule 40 PVC; Gallons/Linear Foot Based on Casing Diameter:

2-inch:	0.17
4-inch:	0.65
6-inch:	1.5

PURGE METHOD: **SAMPLE METHOD:**

Disposable Bailer _____ PVC Bailer _____ Submersible Pump _____ Other _____	Disposable Bailer _____ Pump: _____ Other: _____
--	--

TIME	VOLUME PURGED (gal)	pH	TEMP. (°C)	COND. (uS/cm)	DO (mg/l)	ORP (mV)	COMMENTS
1044	4.5	6.74	21.0	1431			
1054	10.0	6.77	20.4	1413			
1103	14.0	6.77	20.3	1408			
1105							sample

FIELD TECHNICIAN: DJA
DATE: 9/22/11

Argon Laboratories Sample Receipt Checklist

Client Name: Environmental Compliance Group Date & Time Received: 09/23/11 16:18

Project Name: Shore Acres Client Project Number: GHA.19009

Received By: S.H. Matrix: Water Soil Sludge

Sample Carrier: Client Laboratory Fed Ex UPS Other

Argon Labs Project Number: L109079

Shipper Container in good condition? N/A Yes No Samples received in proper containers? Yes No

Samples received under refrigeration? Yes No Samples received intact? Yes No

Sufficient sample volume for requested tests? Yes No

Chain of custody present? Yes No Samples received within holding time? Yes No

Chain of Custody signed by all parties? Yes No Do samples contain proper preservative?
N/A Yes No

Chain of Custody matches all sample labels? Yes No Do VOA vials contain zero headspace?
(None submitted) Yes No

ANY "No" RESPONSE MUST BE DETAILED IN THE COMMENTS SECTION BELOW

Date Client Contacted: _____ Person Contacted: _____

Contacted By: _____ Subject: _____

Comments:

Action Taken:

ADDITIONAL TEST(S) REQUEST / OTHER

Contacted By: _____ Date: _____ Time: _____

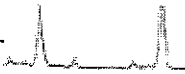
Call Received By: _____

Comments:



Environmental Compliance Group, LLC
270 Vintage Drive
Turlock, CA 95382

Project Number: GHA.19009
Project Name: Shore Acres Gas
Project Manager: Mike Sgourakis



Work Order No.:
L109079

ANALYTICAL REPORT FOR SAMPLES

Sample ID	Laboratory ID	Matrix	Date Sampled	Date Received
MW-1	L109079-01	Water	09/22/11 12:30	09/23/11 16:18
MW-2	L109079-02	Water	09/22/11 09:50	09/23/11 16:18
MW-3	L109079-03	Water	09/22/11 11:48	09/23/11 16:18
MW-4	L109079-04	Water	09/22/11 09:30	09/23/11 16:18
MW-5	L109079-05	Water	09/22/11 10:24	09/23/11 16:18
MW-6	L109079-06	Water	09/22/11 12:07	09/23/11 16:18
EW-1	L109079-07	Water	09/22/11 11:05	09/23/11 16:18
EW-2	L109079-08	Water	09/22/11 10:30	09/23/11 16:18

Approved By

Argon Laboratories, Inc. California D.O.H.S. Cert. #2359