

RECEIVED

By Alameda County Environmental Health 11:54 am, Aug 25, 2016

August 1, 2016

Ms. Donna Drogos
Alameda County Environmental Health
1131 Harbor Parkway, Suite 250
Oakland, CA 94502-6577

Subject: DWR Logs
Shore Acres Gas
403 East 12th Street, Oakland, Alameda County, California
RO #0002931
ECG # GHA.19009

Dear Ms. Drogos:

Enclosed please find a copy of the DWR Logs for the above referenced site prepared by our consultant Environmental Compliance Group, LLC.

I declare, under penalty and perjury, that the information and/or recommendations contained in this report are true and correct to the best of my knowledge.

Respectfully,



Rashid Ghafour

CONFIDENTIAL

STATE OF CALIFORNIA DWR
WELL COMPLETION REPORT
(WELL LOGS)

REMOVED

CONFIDENTIAL

STATE OF CALIFORNIA DWR
WELL COMPLETION REPORT
(WELL LOGS)

REMOVED

CONFIDENTIAL

**STATE OF CALIFORNIA DWR
WELL COMPLETION REPORT
(WELL LOGS)**

REMOVED

CONFIDENTIAL

STATE OF CALIFORNIA DWR
WELL COMPLETION REPORT
(WELL LOGS)

REMOVED

CONFIDENTIAL

STATE OF CALIFORNIA DWR
WELL COMPLETION REPORT
(WELL LOGS)

REMOVED

CONFIDENTIAL

STATE OF CALIFORNIA DWR
WELL COMPLETION REPORT
(WELL LOGS)

REMOVED

CONFIDENTIAL

STATE OF CALIFORNIA DWR
WELL COMPLETION REPORT
(WELL LOGS)

REMOVED

CONFIDENTIAL

STATE OF CALIFORNIA DWR
WELL COMPLETION REPORT
(WELL LOGS)

REMOVED

CONFIDENTIAL

**STATE OF CALIFORNIA DWR
WELL COMPLETION REPORT
(WELL LOGS)**

REMOVED

CONFIDENTIAL

STATE OF CALIFORNIA DWR
WELL COMPLETION REPORT
(WELL LOGS)

REMOVED

Well Number: MW-1

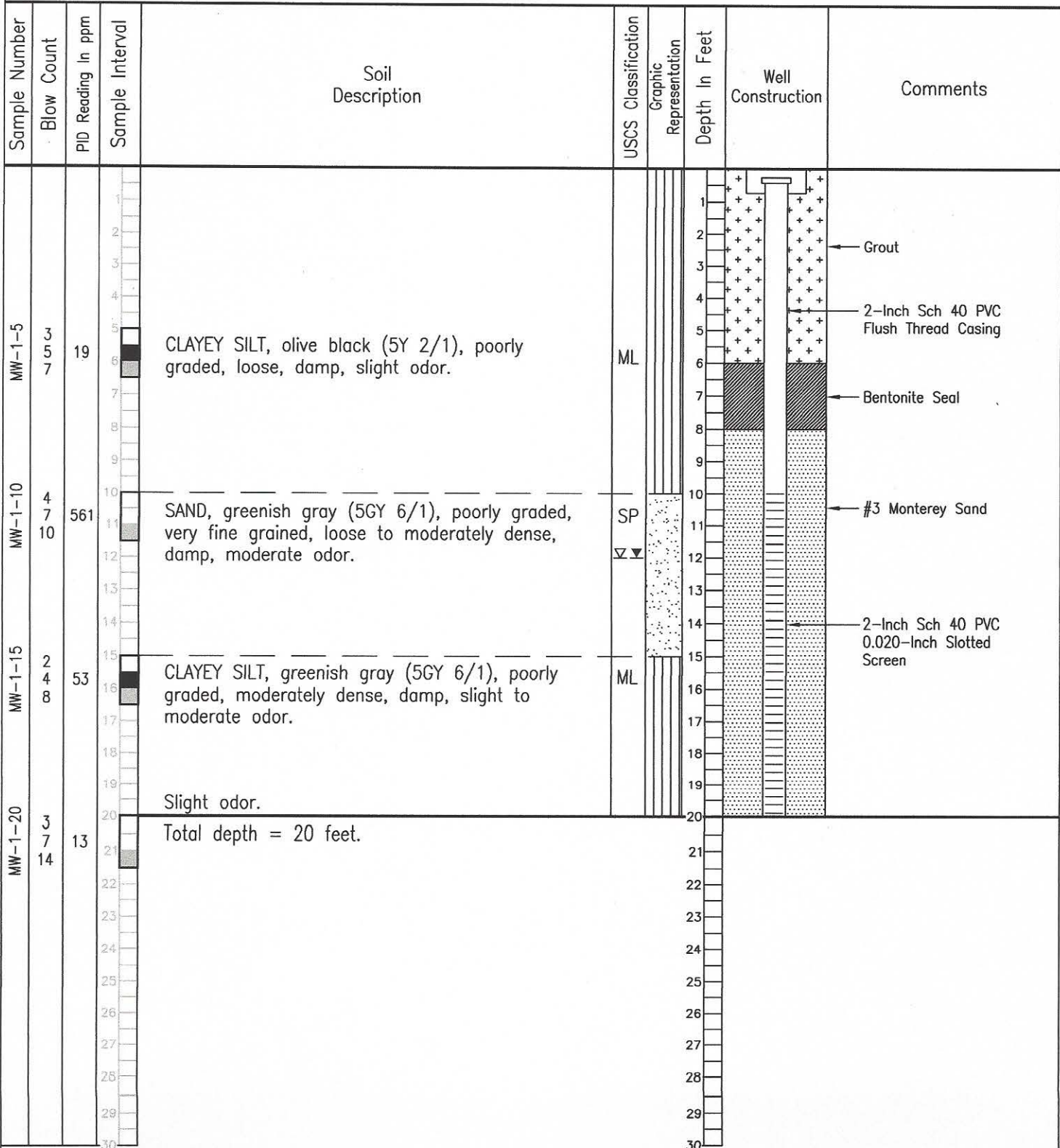
Project Number: GHA.19009



Shore Acre Gas
403 East 12th Street
Oakland, California

Date Drilled: 6/22/11
Drilling Company: RSI Drilling
Drilled By: Jorge
Drilling Method: Hollow-Stem Auger
Sampling Method: Split-Spoon Sampler

Depth Drilled: 20 Feet
Depth To Groundwater
▽ Initial: 12 Feet
▼ Static: 12 Feet



Well Number: MW-2

Project Number: GHA.19009



Shore Acre Gas
403 East 12th Street
Oakland, California

Date Drilled: 6/20-21/11
Drilling Company: RSI Drilling
Drilled By: Jorge
Drilling Method: Hollow-Stem Auger
Sampling Method: Split-Spoon Sampler

Depth Drilled: 20 Feet
Depth To Groundwater:
 ▽ Initial: 17 Feet
 ▼ Static: 11 Feet

Sample Number	Blow Count	PID Reading in ppm	Sample Interval	Soil Description	USCS Classification	Graphic Representation	Depth In Feet	Well Construction	Comments
MW-2-5		0	0-6	CLAYEY SILT, moderate yellowish brown, slightly plastic, soft, damp, no odor.	ML		1-6	Grout	
MW-2-10	3 10 12	150	6-11	Becomes moderate dark gray, moderate odor.			6-11	2-Inch Sch 40 PVC Flush Thread Casing	
MW-2-15	5 6 12	269	11-16	Becomes greenish gray (5G 6/1), poorly graded,			11-16	Bentonite Seal	
MW-2-20	5 7 12	5.0	16-20	CLAYEY SANDY SILT, pale yellowish brown (10YR 6/2), moderately graded, medium grained sand, subangular sand, slightly plastic, moderately dense, saturated, slight odor.			16-20	#3 Monterey Sand	
			20-20	Total depth = 20 feet.			20	2-Inch Sch 40 PVC 0.020-Inch Slotted Screen	

Well Number: MW-3

Project Number: GHA.19009



Shore Acre Gas
403 East 12th Street
Oakland, California

Date Drilled: 6/22/11
Drilling Company: RSI Drilling
Drilled By: Jorge
Drilling Method: Hollow-Stem Auger
Sampling Method: Split-Spoon Sampler

Depth Drilled: 20 Feet
Depth To Groundwater
∇ Initial:
▼ Static:

Sample Number	Blow Count	PID Reading In ppm	Sample Interval	Soil Description	USCS Classification	Graphic Representation	Depth In Feet	Well Construction	Comments
MW-3-5	2 3 6	22	5-6	CLAYEY SILT, dark gray (N3), slightly plastic, loose, damp, slight odor.	ML		1-6	<ul style="list-style-type: none"> Grout 2-Inch Sch 40 PVC Flush Thread Casing Bentonite Seal 	
MW-3-10	5 8 12	1,665	10-11	Becomes greenish gray (5GY 6/1), slightly plastic, moderately dense, moderate odor.			10-11	#3 Monterey Sand	
MW-3-15	1 3 6	201	15-16	SANDY CLAYEY SILT, greenish gray (5GY 6/1), moderately graded, fine grained sand, slightly plastic, moderately dense, damp, slight odor.			14-16	2-Inch Sch 40 PVC 0.020-Inch Slotted Screen	
MW-3-20	3 5 9	14	20-21	No odor. Total depth = 20 feet.			20		

Well Number: MW-4

Project Number: GHA.19009



Shore Acre Gas
403 East 12th Street
Oakland, California

Date Drilled: 6/21/11
Drilling Company: RSI Drilling
Drilled By: Jorge
Drilling Method: Hollow-Stem Auger
Sampling Method: Split-Spoon Sampler

Depth Drilled: 20 Feet
Depth To Groundwater
∇ Initial: 15 Feet
▼ Static: 11 Feet

Sample Number	Blow Count	PID Reading In ppm	Sample Interval	Soil Description	USCS Classification	Graphic Representation	Depth In Feet	Well Construction	Comments
MW-4-5	6 11 13	3	5-6	CLAYEY SILT with SAND and GRAVEL, moderate yellowish brown (10YR 5/4), well graded, very angular sand and gravel, slightly plastic, soft, damp, no odor.	ML		1-6	<ul style="list-style-type: none"> 1-2: Grout 2-4: 2-Inch Sch 40 PVC Flush Thread Casing 4-6: Bentonite Seal 	
MW-4-10	5 6 13	235	10-11	CLAYEY SILT, dark gray (N3), soft, damp, moderate odor.	∇		10-11	#3 Monterey Sand	
MW-4-15	3 5 10	170	15-16	SANDY SILT with CLAY, dark gray (N3), poorly graded, fine grained sand, subangular sand, slightly plastic, moderately dense, saturated, moderate odor.	∇		14-15	2-Inch Sch 40 PVC 0.020-Inch Slotted Screen	
MW-4-20	7 7 13	36	20-21	SANDY SILT with CLAY, moderate yellowish brown (10YR 5/4), moderately graded, medium grained sand, subangular sand, moderately dense, saturated, slight odor.			18-19		
				Total depth = 20 feet.					

Well Number: MW-5

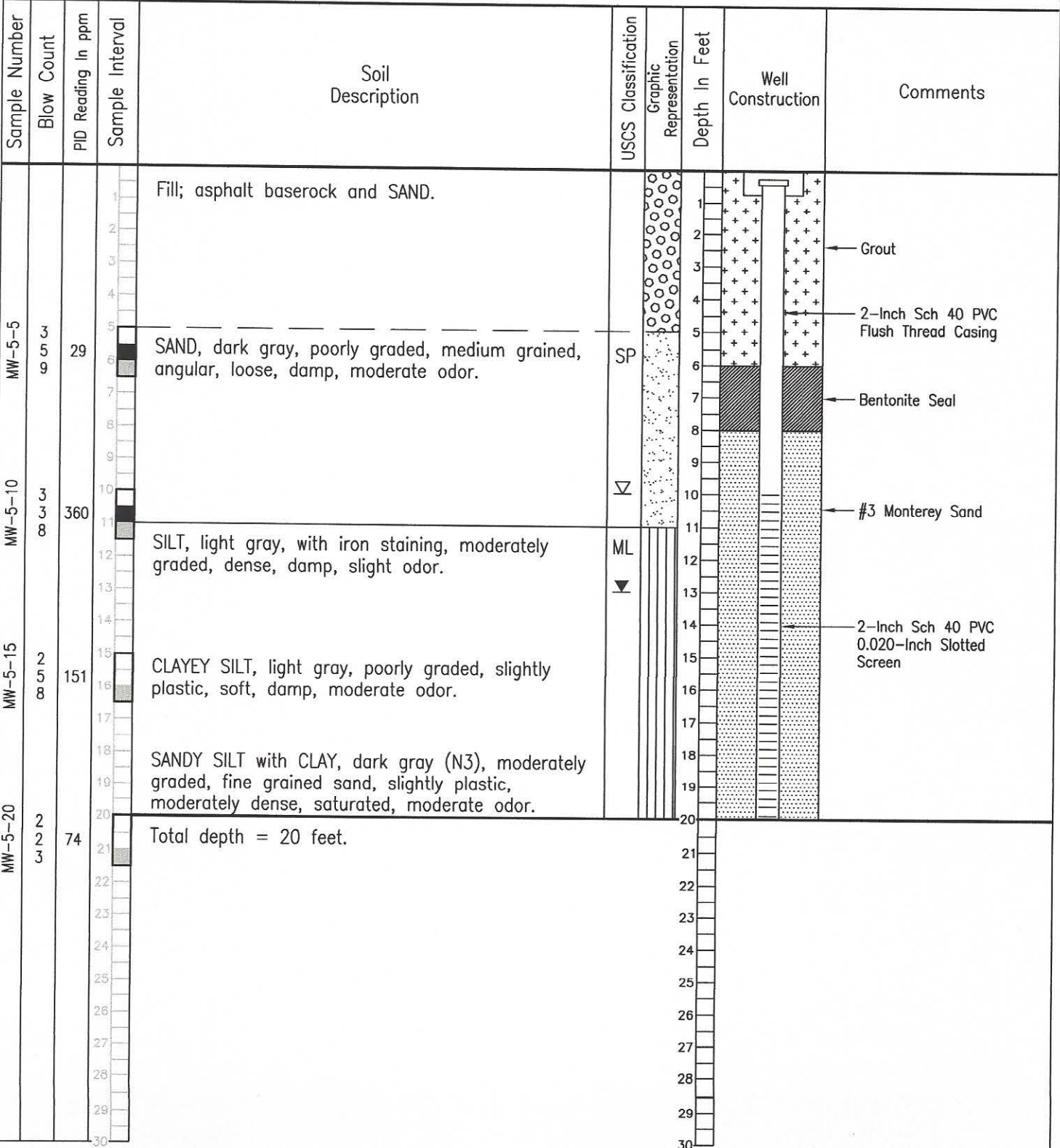
Project Number: GHA.19009



Shore Acre Gas
403 East 12th Street
Oakland, California

Date Drilled: 6/20-21/11
Drilling Company: RSI Drilling
Drilled By: Jorge
Drilling Method: Hollow-Stem Auger
Sampling Method: Split-Spoon Sampler

Depth Drilled: 20 Feet
Depth To Groundwater
 ▽ Initial: 10 Feet
 ▼ Static: 13 Feet



Well Number: MW-6

Project Number: GHA.19009



Shore Acre Gas
403 East 12th Street
Oakland, California

Date Drilled: 6/22/11
Drilling Company: RSI Drilling
Drilled By: Jorge
Drilling Method: Hollow-Stem Auger
Sampling Method: Split-Spoon Sampler

Depth Drilled: 20 Feet
Depth To Groundwater:
 ∇ Initial:
 ▼ Static:

Sample Number	Blow Count	PID Reading In ppm	Sample Interval	Soil Description	USCS Classification	Graphic Representation	Depth In Feet	Well Construction	Comments
MW-6-5	1 For 18"	1.0	5-6	SANDY CLAYEY SILT, dark yellowish brown (10YR 4/2), moderately graded, medium grained sand, subangular, slight plasticity, loose, saturated, slight odor.	ML	[Symbol: +]	1-6	Grout	
MW-6-10	4 8 13	274	10-11	CLAYEY SILT, olive gray (5Y 4/1), slight plasticity, moderately dense, damp.		[Symbol: +]	6-11	2-Inch Sch 40 PVC Flush Thread Casing	
MW-6-15	2 5 6	110	15-16	CLAYEY SAND SILT with sea shells, dark greenish gray (5G 4/1), moderately graded, fine grained sand, slight plasticity, loose, damp, slight odor.		[Symbol: +]	11-16	Bentonite Seal	
MW-6-20	4 7 9	13.3	20-21	Total depth = 20 feet.		[Symbol: +]	16-20	#3 Monterey Sand	
						[Symbol: +]	20-21	2-Inch Sch 40 PVC 0.020-Inch Slotted Screen	

Well Number: VW-1

Project Number: GHA.19009



Shore Acre Gas
403 East 12th Street
Oakland, California

Date Drilled: 6/23/11
Drilling Company: RSI Drilling
Drilled By: Jorge
Drilling Method: Hollow-Stem Auger
Sampling Method: Split-Spoon Sampler

Depth Drilled: 20 Feet
Depth To Groundwater
∇ Initial:
▼ Static:

Sample Number	Blow Count	PID Reading in ppm	Sample Interval	Soil Description	USCS Classification	Graphic Representation	Depth In Feet	Well Construction	Comments
VW-1-5 2 2 5	118		5'-6'	SILTY SAND, dark gray (N3), well graded, medium grained sand, subangular sand, plastic layer at 5', loose, damp, moderate odor.	SW	[Dotted pattern]	1-6	Grout 4-inch Sch 40 PVC Flush Thread Casing Bentonite Seal	
VW-1-10 2 3 5	224		10'-11'			[Dotted pattern]	10-11	#3 Monterey Sand	
VW-1-15 4 7 13	38		15'-16'	CLAYEY SILT, grayish green, slightly plastic, moderately dense, slight odor.	ML	[Vertical lines pattern]	15-16	4-inch Sch 40 PVC 0.020-Inch Slotted Screen	
VW-1-20 3 7 10	143		20'-21'	Becomes moderate yellowish brown, saturated. Total depth = 20 feet.		[Vertical lines pattern]	20-21		

Well Number: VW-2

Project Number: GHA.19009



Shore Acre Gas
403 East 12th Street
Oakland, California

Date Drilled: 6/23/11
Drilling Company: RSI Drilling
Drilled By: Jorge
Drilling Method: Hollow-Stem Auger
Sampling Method: Split-Spoon Sampler

Depth Drilled: 20 Feet
Depth To Groundwater
∇ Initial:
▼ Static:

