

Project No.
7828.000.001

July 28, 2014

Mr. Jerry Wickham
Alameda County Environmental Health
1131 Harbor Bay Parkway
Alameda, CA 94502-6577

Subject: Jordan Ranch Parcel H – Former Leaking Underground Storage Tank
Dublin, California
ACEH Case No. R00002918

UPDATED SOIL REMOVAL WORKPLAN

Reference: ACEH, Technical Comments, Jordan Ranch, Dublin, California, May 28, 2014.

Dear Mr. Wickham:

This workplan was prepared in response to Technical Comment No. 1 in the referenced correspondence. The purpose of the workplan is to remove soil impacts that have been identified in surface soil to verify that there are no human health concerns prior to development of the site to residential use.

BACKGROUND

The locations of the surface soil samples that were collected in August 2013 and July 2014 are shown on Figure 2. The soil sample locations were selected to address potential polychlorinated biphenyl (PCB) impacts previously observed at the base of a former power pole and petroleum staining previously observed near a former barn and above-ground storage areas. The footprints of the former structures were obtained from Google Earth and are overlaid on Figure 2. The soil samples were collected at depth intervals of 0 to 6 and 12 to 18 inches below ground surface.

Three of the initial eleven soil samples collected in 2013 were submitted for analysis of PCBs by EPA Test Method 8082. Eight of the eleven soil samples were submitted for analysis of total petroleum hydrocarbons as gasoline (TPHg); volatile organic compounds by EPA Test Method 8260B; motor oil, and diesel by EPA Test Method 8015B, silica gel cleanup by EPA Test Method 3630; and organochlorine pesticides by EPA Test Method 8081.

PCBs were not detected above the laboratory reporting limit of 0.05 mg/kg. Relatively low concentrations of diesel were detected in seven samples up to a maximum of 58 mg/kg. Motor oil was detected in five samples up to a maximum of 550 mg/kg. Trace concentrations of 4,4-DDD, 4,4-DDE, and alpha-chlordane were detected in one sample. The only detection that exceeded Table K-1 ESLs was a detection of toxaphene at location Barn SS-7 at a depth of 0 to

6 inches. The detected toxaphene concentration, 3.6 mg/kg, is less than the TTLC. Diesel and motor oil detections were also collocated at Barn SS-7, at 63 and 230 mg/kg. Cumulative analytical data is tabulated in Table 1.

FOLLOW-UP STEP OUT SAMPLING

In July 2014, we collected four additional step-out samples around prior location SS-7. Samples *N*, *S*, *E*, *W*, were collected 15 feet from prior location SS-7. The samples were collected at a depth of 0 to 0.5 foot below ground surface. Diesel was detected at a maximum concentration of 41 mg/kg in sample *S*. Motor oil was detected at a maximum concentration of 250 mg/kg in sample *S*. DDE and DDD were detected up to a maximum concentration of 0.012 mg/kg in sample *N*. Toxaphene was not detected above laboratory reporting limits.

PROPOSED REMOVAL ACTION

We propose to remove the elevated toxaphene detected at location Barn SS-7. The proposed removal action will involve excavation of the impacted surface soil and landfill disposal. The removal action scope entails the following:

- We will retain a hazmat licensed backhoe subcontractor to perform the soil excavation and landfill disposal. We estimate that 25 tons of Class II soil will be excavated from a 20- by 20-foot excavation centered on location Barn SS-7. The excavation will extend to a depth of 1 foot. The soil will be temporarily stockpiled onsite for approximately two weeks pending landfill acceptance. We will collect four discrete soil samples from the base of the excavation. The four base samples will be analyzed for diesel and motor oil by EPA Test Method 8015B, silica gel cleanup by EPA Test Method 3630, and organochlorine pesticides by EPA Test Method 8081. One 2-point composite sample will be collected from the stockpile for landfill profiling purposes. The stockpile sample will be analyzed for total petroleum hydrocarbons as diesel and motor oil by EPA Test Method 8015B, silica gel cleanup by EPA Test Method 3630, VOCs by EPA 8260B, CAM 17 metals by EPA 6010/7000, and organochlorine pesticides by EPA Test Method 8081.
- We will prepare a removal action completion report for submittal to ACEH. The report will document the confirmation sampling, soil excavation, and landfill disposal. The location of the excavation will be documented on a site plan. Landfill disposal manifests and receipts will be attached to the report.

SCHEDULE

We can perform the excavation within two weeks of receiving ACEH approval on the workplan. We estimate that the soil off haul would be performed approximately two weeks after the stockpile profile sample data is collected.


Alameda County Environmental Health
Jordan Ranch Parcel H, Dublin
UPDATED SOIL REMOVAL WORKPLAN

7828.000.001
July 28, 2014
Page 3


If you have any questions on any portion of this workplan, please call and we will be glad to discuss them with you.

Sincerely,


ENGEO Incorporated



Morgan Johnson
mj/sm/jf

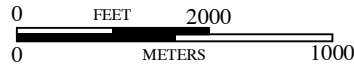
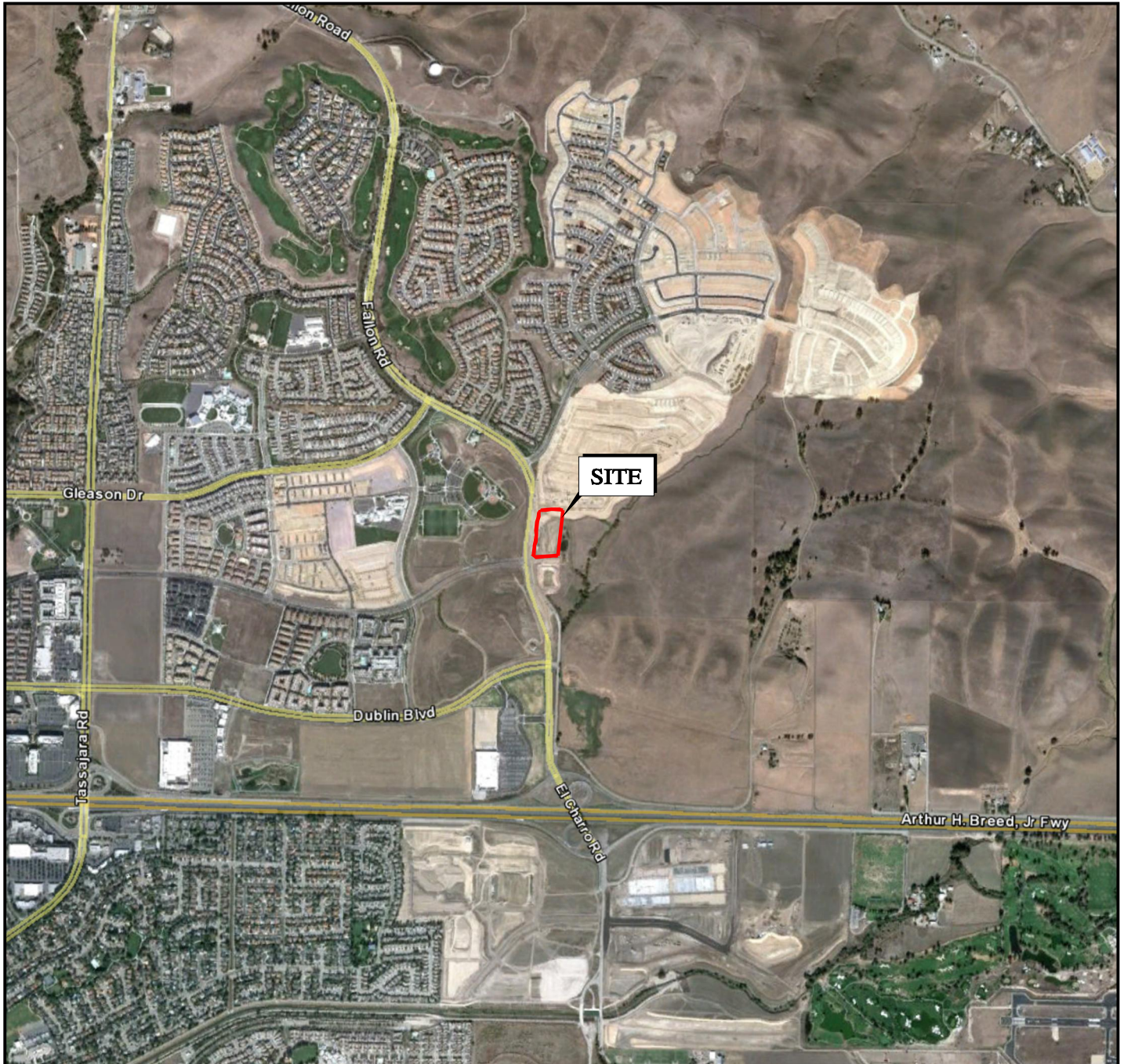


Shawn Munger, CHG



Attachments: Figure 1 – Vicinity Map
Figure 2 – Soil Removal Workplan
Table 1 – Soil Analytical Data
Certified Laboratory Analytical Report
Perjury Statement

COPYRIGHT © 2012 BY ENGeo INCORPORATED. THIS DOCUMENT MAY NOT BE REPRODUCED IN WHOLE OR IN PART BY ANY MEANS WHATSOEVER, NOR MAY IT BE QUOTED OR EXCERPTED WITHOUT THE EXPRESS WRITTEN CONSENT OF ENGeo INCORPORATED.



BASE MAP SOURCE: GOOGLE EARTH



VICINITY MAP
JORDAN RANCH - PARCEL H
DUBLIN, CALIFORNIA

PROJECT NO.: 7828.000.001

DATE: AS SHOWN

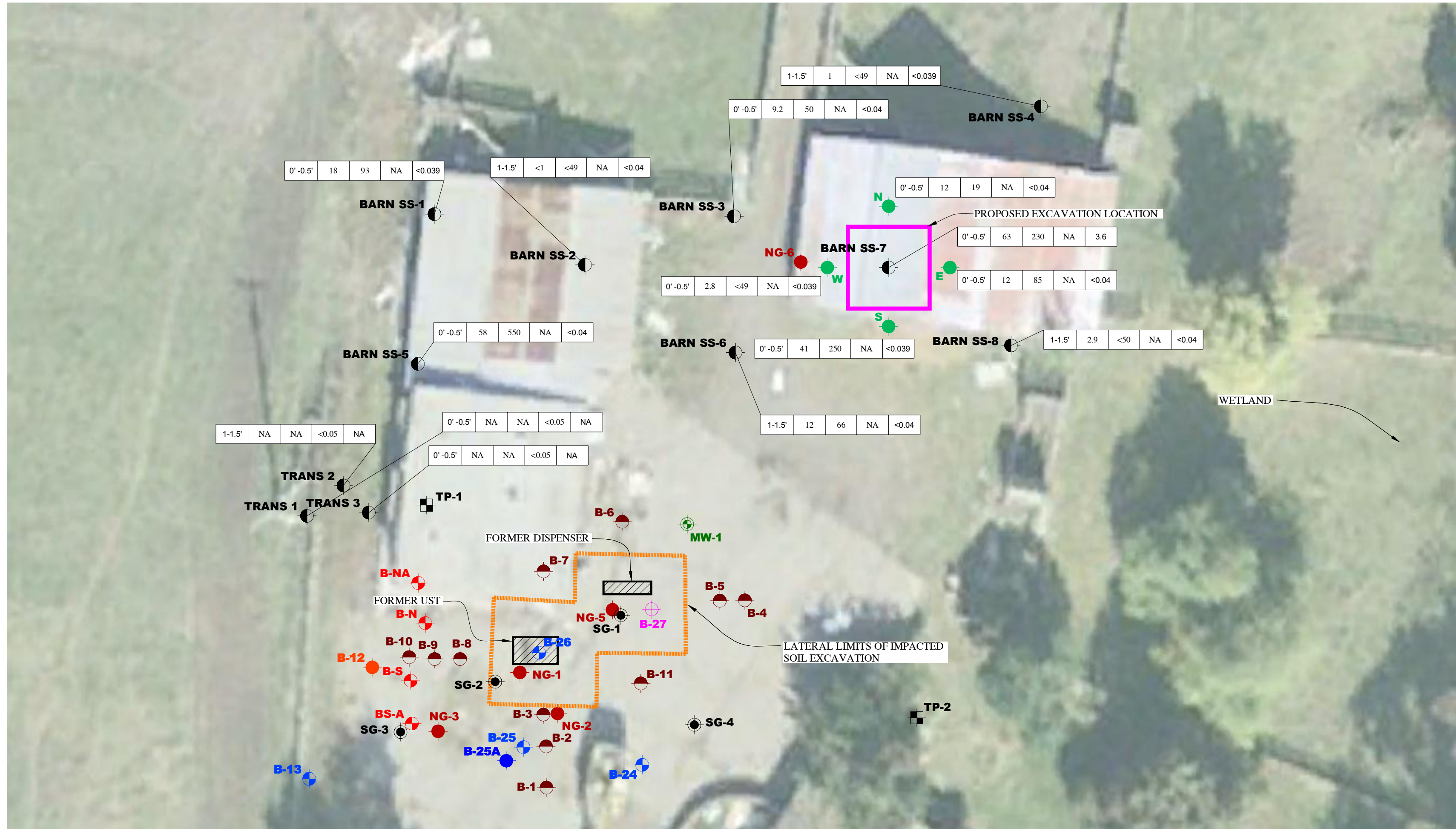
DRAWN BY: SRP

CHECKED BY: SM

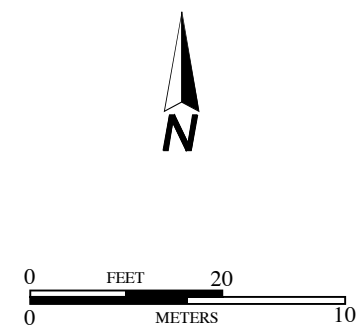
FIGURE NO.

1

COPYRIGHT © 2013 BY ENGeo INCORPORATED. THIS DOCUMENT MAY NOT BE REPRODUCED IN WHOLE OR IN PART BY ANY MEANS WHATSOEVER, NOR MAY IT BE QUOTED OR EXCERPTED WITHOUT THE EXPRESS WRITTEN CONSENT OF ENGeo INCORPORATED.

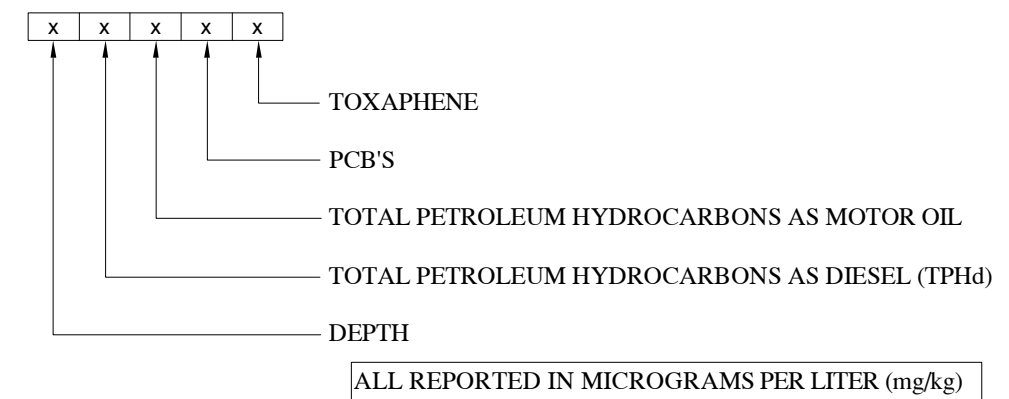


EXPLANATION
ALL LOCATIONS ARE APPROXIMATE



- MW-5** MONITORING WELL LOCATION (OCTOBER 2012)
- B-25A** PROPOSED GRAB GROUNDWATER SAMPLE LOCATION
- B-32** GRAB GROUNDWATER SAMPLE SURVEYED WITH GPS LOCATION (ENGeo 2012/2013)
- NG-5** GRAB GROUNDWATER SAMPLE LOCATION (NEM, 2006)
- TP-3** GRAB GROUNDWATER SAMPLE LOCATION (ICES, 2006)
- B-12** SOIL AND GRAB GROUNDWATER SAMPLE LOCATION (ENGeo 2012/2013)
- BS-A** GRAB SOIL SAMPLE LOCATION
- TRANS 3/BARN SS-7** SURFACE SOIL SAMPLE LOCATION (ENGeo, 9-2013)
- B-27** SOIL SAMPLE ONLY LOCATION (ENGeo, 2012/2013)

- B-11** SOIL BORING FOR SOIL SAMPLING AND PID SCREENING LOCATION (ENGeo, 2012)
- SG-4** SOIL GAS WELL LOCATION
- N** STEP OUT SOIL SAMPLE (ENGeo, 7-2014)



BASE MAP SOURCE: GOOGLE EARTH PRO, 2008



SOIL REMOVAL WORKPLAN
JORDAN RANCH - PARCEL H
DUBLIN, CALIFORNIA

PROJECT NO: 7828.000.001
SCALE: AS SHOWN
DRAWN BY: SRP CHECKED BY: SM

FIGURE NO.
2

TestAmerica

THE LEADER IN ENVIRONMENTAL TESTING

ANALYTICAL REPORT

TestAmerica Laboratories, Inc.
TestAmerica Pleasanton
1220 Quarry Lane
Pleasanton, CA 94566
Tel: (925)484-1919

TestAmerica Job ID: 720-58581-1
Client Project/Site: Jordan Ranch

For:
Engeo, Inc.
2213 Plaza Drive
Rocklin, California 95765

Attn: Ms. Morgan Johnson



Authorized for release by:
7/18/2014 12:11:10 PM

Afsaneh Salimpour, Senior Project Manager
(925)484-1919
afsaneh.salimpour@testamericainc.com

LINKS

Review your project
results through
TotalAccess

Have a Question?



Visit us at:
www.testamericainc.com

This report has been electronically signed and authorized by the signatory. Electronic signature is intended to be the legally binding equivalent of a traditionally handwritten signature.

Results relate only to the items tested and the sample(s) as received by the laboratory.

- 1
- 2
- 3
- 4
- 5
- 6
- 7
- 8
- 9
- 10
- 11
- 12
- 13
- 14



Table of Contents

Cover Page	1
Table of Contents	2
Definitions/Glossary	3
Case Narrative	4
Detection Summary	5
Client Sample Results	6
QC Sample Results	10
QC Association Summary	13
Lab Chronicle	14
Certification Summary	15
Method Summary	16
Sample Summary	17
Chain of Custody	18
Receipt Checklists	19

Definitions/Glossary

Client: Engeo, Inc.
Project/Site: Jordan Ranch

TestAmerica Job ID: 720-58581-1

Qualifiers

GC Semi VOA

Qualifier	Qualifier Description
p	The %RPD between the primary and confirmation column/detector is >40%. The lower value has been reported.

Glossary

Abbreviation	These commonly used abbreviations may or may not be present in this report.
□	Listed under the "D" column to designate that the result is reported on a dry weight basis
%R	Percent Recovery
CFL	Contains Free Liquid
CNF	Contains no Free Liquid
DER	Duplicate error ratio (normalized absolute difference)
Dil Fac	Dilution Factor
DL, RA, RE, IN	Indicates a Dilution, Re-analysis, Re-extraction, or additional Initial metals/anion analysis of the sample
DLC	Decision level concentration
MDA	Minimum detectable activity
EDL	Estimated Detection Limit
MDC	Minimum detectable concentration
MDL	Method Detection Limit
ML	Minimum Level (Dioxin)
NC	Not Calculated
ND	Not detected at the reporting limit (or MDL or EDL if shown)
PQL	Practical Quantitation Limit
QC	Quality Control
RER	Relative error ratio
RL	Reporting Limit or Requested Limit (Radiochemistry)
RPD	Relative Percent Difference, a measure of the relative difference between two points
TEF	Toxicity Equivalent Factor (Dioxin)
TEQ	Toxicity Equivalent Quotient (Dioxin)

Case Narrative

Client: Engeo, Inc.
Project/Site: Jordan Ranch

TestAmerica Job ID: 720-58581-1

Job ID: 720-58581-1

Laboratory: TestAmerica Pleasanton

Narrative

Job Narrative
720-58581-1

Comments

No additional comments.

Receipt

The samples were received on 7/11/2014 10:45 AM; the samples arrived in good condition, properly preserved and, where required, on ice. The temperature of the cooler at receipt was 2.9° C.

GC Semi VOA

Method(s) 8081A: The %RPD between the primary and confirmation column / detector exceeded 40% for alpha chlordane for the following sample(s): N (720-58581-1), S (720-58581-2). The lower value(s) has been reported and qualified in accordance with the laboratory's SOP.

No additional analytical or quality issues were noted, other than those described above or in the Definitions/Glossary page.

Organic Prep

No analytical or quality issues were noted, other than those described in the Definitions/Glossary page.

- 1
- 2
- 3
- 4
- 5
- 6
- 7
- 8
- 9
- 10
- 11
- 12
- 13
- 14

Detection Summary

Client: Engeo, Inc.
Project/Site: Jordan Ranch

TestAmerica Job ID: 720-58581-1

Client Sample ID: N

Lab Sample ID: 720-58581-1

Analyte	Result	Qualifier	RL	MDL	Unit	Dil Fac	D	Method	Prep Type
Diesel Range Organics [C10-C28]	12		0.99		mg/Kg	1		8015B	Silica Gel Cleanup
Motor Oil Range Organics [C24-C36]	69		49		mg/Kg	1		8015B	Silica Gel Cleanup
4,4'-DDE	12		2.0		ug/Kg	1		8081A	Total/NA
4,4'-DDD	2.6		2.0		ug/Kg	1		8081A	Total/NA
Chlordane (technical)	55		40		ug/Kg	1		8081A	Total/NA
alpha-Chlordane	7.7	p	2.0		ug/Kg	1		8081A	Total/NA
gamma-Chlordane	11		2.0		ug/Kg	1		8081A	Total/NA

Client Sample ID: S

Lab Sample ID: 720-58581-2

Analyte	Result	Qualifier	RL	MDL	Unit	Dil Fac	D	Method	Prep Type
Diesel Range Organics [C10-C28]	41		3.0		mg/Kg	3		8015B	Silica Gel Cleanup
Motor Oil Range Organics [C24-C36]	250		150		mg/Kg	3		8015B	Silica Gel Cleanup
4,4'-DDE	7.2		1.9		ug/Kg	1		8081A	Total/NA
Chlordane (technical)	240		39		ug/Kg	1		8081A	Total/NA
alpha-Chlordane	37	p	1.9		ug/Kg	1		8081A	Total/NA
gamma-Chlordane	55		1.9		ug/Kg	1		8081A	Total/NA

Client Sample ID: E

Lab Sample ID: 720-58581-3

Analyte	Result	Qualifier	RL	MDL	Unit	Dil Fac	D	Method	Prep Type
Diesel Range Organics [C10-C28]	12		0.99		mg/Kg	1		8015B	Silica Gel Cleanup
Motor Oil Range Organics [C24-C36]	85		50		mg/Kg	1		8015B	Silica Gel Cleanup
4,4'-DDE	7.0		2.0		ug/Kg	1		8081A	Total/NA

Client Sample ID: W

Lab Sample ID: 720-58581-4

Analyte	Result	Qualifier	RL	MDL	Unit	Dil Fac	D	Method	Prep Type
Diesel Range Organics [C10-C28]	2.8		0.99		mg/Kg	1		8015B	Silica Gel Cleanup
4,4'-DDE	10		2.0		ug/Kg	1		8081A	Total/NA

This Detection Summary does not include radiochemical test results.

TestAmerica Pleasanton

Client Sample Results

Client: Engeo, Inc.
Project/Site: Jordan Ranch

TestAmerica Job ID: 720-58581-1

Client Sample ID: N

Lab Sample ID: 720-58581-1

Date Collected: 07/11/14 09:45

Matrix: Solid

Date Received: 07/11/14 10:45

Method: 8015B - Diesel Range Organics (DRO) (GC) - Silica Gel Cleanup

Analyte	Result	Qualifier	RL	MDL	Unit	D	Prepared	Analyzed	Dil Fac
Diesel Range Organics [C10-C28]	12		0.99		mg/Kg		07/15/14 14:12	07/16/14 01:54	1
Motor Oil Range Organics [C24-C36]	69		49		mg/Kg		07/15/14 14:12	07/16/14 01:54	1
Surrogate	%Recovery	Qualifier	Limits				Prepared	Analyzed	Dil Fac
Capric Acid (Surr)	0.4		0 - 1				07/15/14 14:12	07/16/14 01:54	1
p-Terphenyl	73		38 - 148				07/15/14 14:12	07/16/14 01:54	1

Method: 8081A - Organochlorine Pesticides (GC)

Analyte	Result	Qualifier	RL	MDL	Unit	D	Prepared	Analyzed	Dil Fac
Aldrin	ND		2.0		ug/Kg		07/15/14 14:11	07/16/14 16:20	1
Dieldrin	ND		2.0		ug/Kg		07/15/14 14:11	07/16/14 16:20	1
Endrin aldehyde	ND		2.0		ug/Kg		07/15/14 14:11	07/16/14 16:20	1
Endrin	ND		2.0		ug/Kg		07/15/14 14:11	07/16/14 16:20	1
Endrin ketone	ND		2.0		ug/Kg		07/15/14 14:11	07/16/14 16:20	1
Heptachlor	ND		2.0		ug/Kg		07/15/14 14:11	07/16/14 16:20	1
Heptachlor epoxide	ND		2.0		ug/Kg		07/15/14 14:11	07/16/14 16:20	1
4,4'-DDT	ND		2.0		ug/Kg		07/15/14 14:11	07/16/14 16:20	1
4,4'-DDE	12		2.0		ug/Kg		07/15/14 14:11	07/16/14 16:20	1
4,4'-DDD	2.6		2.0		ug/Kg		07/15/14 14:11	07/16/14 16:20	1
Endosulfan I	ND		2.0		ug/Kg		07/15/14 14:11	07/16/14 16:20	1
Endosulfan II	ND		2.0		ug/Kg		07/15/14 14:11	07/16/14 16:20	1
alpha-BHC	ND		2.0		ug/Kg		07/15/14 14:11	07/16/14 16:20	1
beta-BHC	ND		2.0		ug/Kg		07/15/14 14:11	07/16/14 16:20	1
gamma-BHC (Lindane)	ND		2.0		ug/Kg		07/15/14 14:11	07/16/14 16:20	1
delta-BHC	ND		2.0		ug/Kg		07/15/14 14:11	07/16/14 16:20	1
Endosulfan sulfate	ND		2.0		ug/Kg		07/15/14 14:11	07/16/14 16:20	1
Methoxychlor	ND		2.0		ug/Kg		07/15/14 14:11	07/16/14 16:20	1
Toxaphene	ND		40		ug/Kg		07/15/14 14:11	07/16/14 16:20	1
Chlordane (technical)	55		40		ug/Kg		07/15/14 14:11	07/16/14 16:20	1
alpha-Chlordane	7.7	p	2.0		ug/Kg		07/15/14 14:11	07/16/14 16:20	1
gamma-Chlordane	11		2.0		ug/Kg		07/15/14 14:11	07/16/14 16:20	1
Surrogate	%Recovery	Qualifier	Limits				Prepared	Analyzed	Dil Fac
Tetrachloro-m-xylene	101		57 - 122				07/15/14 14:11	07/16/14 16:20	1
DCB Decachlorobiphenyl	97		21 - 136				07/15/14 14:11	07/16/14 16:20	1

TestAmerica Pleasanton

Client Sample Results

Client: Engeo, Inc.
Project/Site: Jordan Ranch

TestAmerica Job ID: 720-58581-1

Client Sample ID: S

Lab Sample ID: 720-58581-2

Date Collected: 07/11/14 09:50

Matrix: Solid

Date Received: 07/11/14 10:45

Method: 8015B - Diesel Range Organics (DRO) (GC) - Silica Gel Cleanup

Analyte	Result	Qualifier	RL	MDL	Unit	D	Prepared	Analyzed	Dil Fac
Diesel Range Organics [C10-C28]	41		3.0		mg/Kg		07/15/14 14:12	07/16/14 11:08	3
Motor Oil Range Organics [C24-C36]	250		150		mg/Kg		07/15/14 14:12	07/16/14 11:08	3
Surrogate	%Recovery	Qualifier	Limits				Prepared	Analyzed	Dil Fac
Capric Acid (Surr)	0.0007		0 - 1				07/15/14 14:12	07/16/14 11:08	3
p-Terphenyl	81		38 - 148				07/15/14 14:12	07/16/14 11:08	3

Method: 8081A - Organochlorine Pesticides (GC)

Analyte	Result	Qualifier	RL	MDL	Unit	D	Prepared	Analyzed	Dil Fac
Aldrin	ND		1.9		ug/Kg		07/15/14 14:11	07/16/14 16:36	1
Dieldrin	ND		1.9		ug/Kg		07/15/14 14:11	07/16/14 16:36	1
Endrin aldehyde	ND		1.9		ug/Kg		07/15/14 14:11	07/16/14 16:36	1
Endrin	ND		1.9		ug/Kg		07/15/14 14:11	07/16/14 16:36	1
Endrin ketone	ND		1.9		ug/Kg		07/15/14 14:11	07/16/14 16:36	1
Heptachlor	ND		1.9		ug/Kg		07/15/14 14:11	07/16/14 16:36	1
Heptachlor epoxide	ND		1.9		ug/Kg		07/15/14 14:11	07/16/14 16:36	1
4,4'-DDT	ND		1.9		ug/Kg		07/15/14 14:11	07/16/14 16:36	1
4,4'-DDE	7.2		1.9		ug/Kg		07/15/14 14:11	07/16/14 16:36	1
4,4'-DDD	ND		1.9		ug/Kg		07/15/14 14:11	07/16/14 16:36	1
Endosulfan I	ND		1.9		ug/Kg		07/15/14 14:11	07/16/14 16:36	1
Endosulfan II	ND		1.9		ug/Kg		07/15/14 14:11	07/16/14 16:36	1
alpha-BHC	ND		1.9		ug/Kg		07/15/14 14:11	07/16/14 16:36	1
beta-BHC	ND		1.9		ug/Kg		07/15/14 14:11	07/16/14 16:36	1
gamma-BHC (Lindane)	ND		1.9		ug/Kg		07/15/14 14:11	07/16/14 16:36	1
delta-BHC	ND		1.9		ug/Kg		07/15/14 14:11	07/16/14 16:36	1
Endosulfan sulfate	ND		1.9		ug/Kg		07/15/14 14:11	07/16/14 16:36	1
Methoxychlor	ND		1.9		ug/Kg		07/15/14 14:11	07/16/14 16:36	1
Toxaphene	ND		39		ug/Kg		07/15/14 14:11	07/16/14 16:36	1
Chlordane (technical)	240		39		ug/Kg		07/15/14 14:11	07/16/14 16:36	1
alpha-Chlordane	37	p	1.9		ug/Kg		07/15/14 14:11	07/16/14 16:36	1
gamma-Chlordane	55		1.9		ug/Kg		07/15/14 14:11	07/16/14 16:36	1
Surrogate	%Recovery	Qualifier	Limits				Prepared	Analyzed	Dil Fac
Tetrachloro-m-xylene	107		57 - 122				07/15/14 14:11	07/16/14 16:36	1
DCB Decachlorobiphenyl	100		21 - 136				07/15/14 14:11	07/16/14 16:36	1

TestAmerica Pleasanton

Client Sample Results

Client: Engeo, Inc.
Project/Site: Jordan Ranch

TestAmerica Job ID: 720-58581-1

Client Sample ID: E

Lab Sample ID: 720-58581-3

Date Collected: 07/11/14 09:57

Matrix: Solid

Date Received: 07/11/14 10:45

Method: 8015B - Diesel Range Organics (DRO) (GC) - Silica Gel Cleanup

Analyte	Result	Qualifier	RL	MDL	Unit	D	Prepared	Analyzed	Dil Fac
Diesel Range Organics [C10-C28]	12		0.99		mg/Kg		07/15/14 14:12	07/16/14 02:18	1
Motor Oil Range Organics [C24-C36]	85		50		mg/Kg		07/15/14 14:12	07/16/14 02:18	1
Surrogate	%Recovery	Qualifier	Limits				Prepared	Analyzed	Dil Fac
Capric Acid (Surr)	0.2		0 - 1				07/15/14 14:12	07/16/14 02:18	1
p-Terphenyl	79		38 - 148				07/15/14 14:12	07/16/14 02:18	1

Method: 8081A - Organochlorine Pesticides (GC)

Analyte	Result	Qualifier	RL	MDL	Unit	D	Prepared	Analyzed	Dil Fac
Aldrin	ND		2.0		ug/Kg		07/15/14 14:11	07/16/14 16:53	1
Dieldrin	ND		2.0		ug/Kg		07/15/14 14:11	07/16/14 16:53	1
Endrin aldehyde	ND		2.0		ug/Kg		07/15/14 14:11	07/16/14 16:53	1
Endrin	ND		2.0		ug/Kg		07/15/14 14:11	07/16/14 16:53	1
Endrin ketone	ND		2.0		ug/Kg		07/15/14 14:11	07/16/14 16:53	1
Heptachlor	ND		2.0		ug/Kg		07/15/14 14:11	07/16/14 16:53	1
Heptachlor epoxide	ND		2.0		ug/Kg		07/15/14 14:11	07/16/14 16:53	1
4,4'-DDT	ND		2.0		ug/Kg		07/15/14 14:11	07/16/14 16:53	1
4,4'-DDE	7.0		2.0		ug/Kg		07/15/14 14:11	07/16/14 16:53	1
4,4'-DDD	ND		2.0		ug/Kg		07/15/14 14:11	07/16/14 16:53	1
Endosulfan I	ND		2.0		ug/Kg		07/15/14 14:11	07/16/14 16:53	1
Endosulfan II	ND		2.0		ug/Kg		07/15/14 14:11	07/16/14 16:53	1
alpha-BHC	ND		2.0		ug/Kg		07/15/14 14:11	07/16/14 16:53	1
beta-BHC	ND		2.0		ug/Kg		07/15/14 14:11	07/16/14 16:53	1
gamma-BHC (Lindane)	ND		2.0		ug/Kg		07/15/14 14:11	07/16/14 16:53	1
delta-BHC	ND		2.0		ug/Kg		07/15/14 14:11	07/16/14 16:53	1
Endosulfan sulfate	ND		2.0		ug/Kg		07/15/14 14:11	07/16/14 16:53	1
Methoxychlor	ND		2.0		ug/Kg		07/15/14 14:11	07/16/14 16:53	1
Toxaphene	ND		40		ug/Kg		07/15/14 14:11	07/16/14 16:53	1
Chlordane (technical)	ND		40		ug/Kg		07/15/14 14:11	07/16/14 16:53	1
alpha-Chlordane	ND		2.0		ug/Kg		07/15/14 14:11	07/16/14 16:53	1
gamma-Chlordane	ND		2.0		ug/Kg		07/15/14 14:11	07/16/14 16:53	1
Surrogate	%Recovery	Qualifier	Limits				Prepared	Analyzed	Dil Fac
Tetrachloro-m-xylene	100		57 - 122				07/15/14 14:11	07/16/14 16:53	1
DCB Decachlorobiphenyl	115		21 - 136				07/15/14 14:11	07/16/14 16:53	1

TestAmerica Pleasanton

Client Sample Results

Client: Engeo, Inc.
Project/Site: Jordan Ranch

TestAmerica Job ID: 720-58581-1

Client Sample ID: W

Lab Sample ID: 720-58581-4

Date Collected: 07/11/14 10:02

Matrix: Solid

Date Received: 07/11/14 10:45

Method: 8015B - Diesel Range Organics (DRO) (GC) - Silica Gel Cleanup

Analyte	Result	Qualifier	RL	MDL	Unit	D	Prepared	Analyzed	Dil Fac
Diesel Range Organics [C10-C28]	2.8		0.99		mg/Kg		07/15/14 14:12	07/16/14 00:41	1
Motor Oil Range Organics [C24-C36]	ND		49		mg/Kg		07/15/14 14:12	07/16/14 00:41	1
Surrogate	%Recovery	Qualifier	Limits				Prepared	Analyzed	Dil Fac
Capric Acid (Surr)	0.1		0 - 1				07/15/14 14:12	07/16/14 00:41	1
p-Terphenyl	77		38 - 148				07/15/14 14:12	07/16/14 00:41	1

Method: 8081A - Organochlorine Pesticides (GC)

Analyte	Result	Qualifier	RL	MDL	Unit	D	Prepared	Analyzed	Dil Fac
Aldrin	ND		2.0		ug/Kg		07/15/14 14:11	07/16/14 17:10	1
Dieldrin	ND		2.0		ug/Kg		07/15/14 14:11	07/16/14 17:10	1
Endrin aldehyde	ND		2.0		ug/Kg		07/15/14 14:11	07/16/14 17:10	1
Endrin	ND		2.0		ug/Kg		07/15/14 14:11	07/16/14 17:10	1
Endrin ketone	ND		2.0		ug/Kg		07/15/14 14:11	07/16/14 17:10	1
Heptachlor	ND		2.0		ug/Kg		07/15/14 14:11	07/16/14 17:10	1
Heptachlor epoxide	ND		2.0		ug/Kg		07/15/14 14:11	07/16/14 17:10	1
4,4'-DDT	ND		2.0		ug/Kg		07/15/14 14:11	07/16/14 17:10	1
4,4'-DDE	10		2.0		ug/Kg		07/15/14 14:11	07/16/14 17:10	1
4,4'-DDD	ND		2.0		ug/Kg		07/15/14 14:11	07/16/14 17:10	1
Endosulfan I	ND		2.0		ug/Kg		07/15/14 14:11	07/16/14 17:10	1
Endosulfan II	ND		2.0		ug/Kg		07/15/14 14:11	07/16/14 17:10	1
alpha-BHC	ND		2.0		ug/Kg		07/15/14 14:11	07/16/14 17:10	1
beta-BHC	ND		2.0		ug/Kg		07/15/14 14:11	07/16/14 17:10	1
gamma-BHC (Lindane)	ND		2.0		ug/Kg		07/15/14 14:11	07/16/14 17:10	1
delta-BHC	ND		2.0		ug/Kg		07/15/14 14:11	07/16/14 17:10	1
Endosulfan sulfate	ND		2.0		ug/Kg		07/15/14 14:11	07/16/14 17:10	1
Methoxychlor	ND		2.0		ug/Kg		07/15/14 14:11	07/16/14 17:10	1
Toxaphene	ND		39		ug/Kg		07/15/14 14:11	07/16/14 17:10	1
Chlordane (technical)	ND		39		ug/Kg		07/15/14 14:11	07/16/14 17:10	1
alpha-Chlordane	ND		2.0		ug/Kg		07/15/14 14:11	07/16/14 17:10	1
gamma-Chlordane	ND		2.0		ug/Kg		07/15/14 14:11	07/16/14 17:10	1
Surrogate	%Recovery	Qualifier	Limits				Prepared	Analyzed	Dil Fac
Tetrachloro-m-xylene	95		57 - 122				07/15/14 14:11	07/16/14 17:10	1
DCB Decachlorobiphenyl	118		21 - 136				07/15/14 14:11	07/16/14 17:10	1

TestAmerica Pleasanton

QC Sample Results

Client: Engeo, Inc.
Project/Site: Jordan Ranch

TestAmerica Job ID: 720-58581-1

Method: 8015B - Diesel Range Organics (DRO) (GC)

Lab Sample ID: MB 720-163021/1-A

Matrix: Solid

Analysis Batch: 163000

Client Sample ID: Method Blank

Prep Type: Silica Gel Cleanup

Prep Batch: 163021

Analyte	MB Result	MB Qualifier	RL	MDL	Unit	D	Prepared	Analyzed	Dil Fac
Diesel Range Organics [C10-C28]	ND		0.99		mg/Kg		07/15/14 11:52	07/16/14 05:08	1
Motor Oil Range Organics [C24-C36]	ND		49		mg/Kg		07/15/14 11:52	07/16/14 05:08	1

Surrogate	MB %Recovery	MB Qualifier	Limits	Prepared	Analyzed	Dil Fac
Capric Acid (Surr)	0		0 - 1	07/15/14 11:52	07/16/14 05:08	1
p-Terphenyl	98		38 - 148	07/15/14 11:52	07/16/14 05:08	1

Lab Sample ID: LCS 720-163021/2-A

Matrix: Solid

Analysis Batch: 163000

Client Sample ID: Lab Control Sample

Prep Type: Silica Gel Cleanup

Prep Batch: 163021

Analyte	Spike Added	LCS Result	LCS Qualifier	Unit	D	%Rec	%Rec. Limits
Diesel Range Organics [C10-C28]	82.5	53.4		mg/Kg		65	36 - 112

Surrogate	LCS %Recovery	LCS Qualifier	Limits
p-Terphenyl	114		38 - 148

Lab Sample ID: LCSD 720-163021/3-A

Matrix: Solid

Analysis Batch: 163000

Client Sample ID: Lab Control Sample Dup

Prep Type: Silica Gel Cleanup

Prep Batch: 163021

Analyte	Spike Added	LCSD Result	LCSD Qualifier	Unit	D	%Rec	%Rec. Limits	RPD	RPD Limit
Diesel Range Organics [C10-C28]	82.5	46.6		mg/Kg		57	36 - 112	14	35

Surrogate	LCSD %Recovery	LCSD Qualifier	Limits
p-Terphenyl	108		38 - 148

Method: 8081A - Organochlorine Pesticides (GC)

Lab Sample ID: MB 720-163009/1-A

Matrix: Solid

Analysis Batch: 163071

Client Sample ID: Method Blank

Prep Type: Total/NA

Prep Batch: 163009

Analyte	MB Result	MB Qualifier	RL	MDL	Unit	D	Prepared	Analyzed	Dil Fac
Aldrin	ND		1.9		ug/Kg		07/15/14 09:43	07/16/14 10:44	1
Dieldrin	ND		1.9		ug/Kg		07/15/14 09:43	07/16/14 10:44	1
Endrin aldehyde	ND		1.9		ug/Kg		07/15/14 09:43	07/16/14 10:44	1
Endrin	ND		1.9		ug/Kg		07/15/14 09:43	07/16/14 10:44	1
Endrin ketone	ND		1.9		ug/Kg		07/15/14 09:43	07/16/14 10:44	1
Heptachlor	ND		1.9		ug/Kg		07/15/14 09:43	07/16/14 10:44	1
Heptachlor epoxide	ND		1.9		ug/Kg		07/15/14 09:43	07/16/14 10:44	1
4,4'-DDT	ND		1.9		ug/Kg		07/15/14 09:43	07/16/14 10:44	1
4,4'-DDE	ND		1.9		ug/Kg		07/15/14 09:43	07/16/14 10:44	1
4,4'-DDD	ND		1.9		ug/Kg		07/15/14 09:43	07/16/14 10:44	1
Endosulfan I	ND		1.9		ug/Kg		07/15/14 09:43	07/16/14 10:44	1

TestAmerica Pleasanton

QC Sample Results

Client: Engeo, Inc.
Project/Site: Jordan Ranch

TestAmerica Job ID: 720-58581-1

Method: 8081A - Organochlorine Pesticides (GC) (Continued)

Lab Sample ID: MB 720-163009/1-A

Matrix: Solid

Analysis Batch: 163071

Client Sample ID: Method Blank

Prep Type: Total/NA

Prep Batch: 163009

Analyte	MB Result	MB Qualifier	RL	MDL	Unit	D	Prepared	Analyzed	Dil Fac
Endosulfan II	ND		1.9		ug/Kg		07/15/14 09:43	07/16/14 10:44	1
alpha-BHC	ND		1.9		ug/Kg		07/15/14 09:43	07/16/14 10:44	1
beta-BHC	ND		1.9		ug/Kg		07/15/14 09:43	07/16/14 10:44	1
gamma-BHC (Lindane)	ND		1.9		ug/Kg		07/15/14 09:43	07/16/14 10:44	1
delta-BHC	ND		1.9		ug/Kg		07/15/14 09:43	07/16/14 10:44	1
Endosulfan sulfate	ND		1.9		ug/Kg		07/15/14 09:43	07/16/14 10:44	1
Methoxychlor	ND		1.9		ug/Kg		07/15/14 09:43	07/16/14 10:44	1
Toxaphene	ND		39		ug/Kg		07/15/14 09:43	07/16/14 10:44	1
Chlordane (technical)	ND		39		ug/Kg		07/15/14 09:43	07/16/14 10:44	1
alpha-Chlordane	ND		1.9		ug/Kg		07/15/14 09:43	07/16/14 10:44	1
gamma-Chlordane	ND		1.9		ug/Kg		07/15/14 09:43	07/16/14 10:44	1

Surrogate	MB %Recovery	MB Qualifier	Limits	Prepared	Analyzed	Dil Fac
Tetrachloro-m-xylene	92		57 - 122	07/15/14 09:43	07/16/14 10:44	1
DCB Decachlorobiphenyl	105		21 - 136	07/15/14 09:43	07/16/14 10:44	1

Lab Sample ID: LCS 720-163009/2-A

Matrix: Solid

Analysis Batch: 163071

Client Sample ID: Lab Control Sample

Prep Type: Total/NA

Prep Batch: 163009

Analyte	Spike Added	LCS Result	LCS Qualifier	Unit	D	%Rec	%Rec. Limits
Aldrin	16.5	14.4		ug/Kg		87	65 - 120
Dieldrin	16.5	16.3		ug/Kg		99	72 - 120
Endrin aldehyde	16.5	16.2		ug/Kg		98	68 - 120
Endrin	16.5	16.1		ug/Kg		97	68 - 120
Endrin ketone	16.5	16.8		ug/Kg		102	67 - 120
Heptachlor	16.5	14.2		ug/Kg		86	69 - 120
Heptachlor epoxide	16.5	15.9		ug/Kg		96	68 - 120
4,4'-DDT	16.5	16.9		ug/Kg		102	63 - 127
4,4'-DDE	16.5	16.3		ug/Kg		99	70 - 120
4,4'-DDD	16.5	16.8		ug/Kg		102	69 - 120
Endosulfan I	16.5	15.7		ug/Kg		95	62 - 120
Endosulfan II	16.5	16.4		ug/Kg		100	65 - 120
alpha-BHC	16.5	14.1		ug/Kg		86	62 - 120
beta-BHC	16.5	15.5		ug/Kg		94	74 - 124
gamma-BHC (Lindane)	16.5	14.8		ug/Kg		90	72 - 120
delta-BHC	16.5	12.5		ug/Kg		76	43 - 125
Endosulfan sulfate	16.5	16.6		ug/Kg		101	67 - 120
Methoxychlor	16.5	18.1		ug/Kg		110	71 - 132
alpha-Chlordane	16.5	16.0		ug/Kg		97	70 - 120
gamma-Chlordane	16.5	16.0		ug/Kg		97	68 - 120

Surrogate	LCS %Recovery	LCS Qualifier	Limits
Tetrachloro-m-xylene	89		57 - 122
Tetrachloro-m-xylene	87		57 - 122
DCB Decachlorobiphenyl	105		21 - 136
DCB Decachlorobiphenyl	105		21 - 136

TestAmerica Pleasanton

QC Sample Results

Client: Engeo, Inc.
Project/Site: Jordan Ranch

TestAmerica Job ID: 720-58581-1

Method: 8081A - Organochlorine Pesticides (GC) (Continued)

Lab Sample ID: LCSD 720-163009/3-A

Matrix: Solid

Analysis Batch: 163071

Client Sample ID: Lab Control Sample Dup

Prep Type: Total/NA

Prep Batch: 163009

Analyte	Spike Added	LCSD Result	LCSD Qualifier	Unit	D	%Rec	%Rec. Limits	RPD	RPD
									Limit
Aldrin	16.4	14.6		ug/Kg		89	65 - 120	1	20
Dieldrin	16.4	16.5		ug/Kg		101	72 - 120	1	20
Endrin aldehyde	16.4	16.3		ug/Kg		99	68 - 120	0	20
Endrin	16.4	16.2		ug/Kg		99	68 - 120	1	20
Endrin ketone	16.4	16.8		ug/Kg		102	67 - 120	0	20
Heptachlor	16.4	14.5		ug/Kg		88	69 - 120	2	20
Heptachlor epoxide	16.4	16.1		ug/Kg		98	68 - 120	1	20
4,4'-DDT	16.4	16.9		ug/Kg		103	63 - 127	0	20
4,4'-DDE	16.4	16.5		ug/Kg		101	70 - 120	1	20
4,4'-DDD	16.4	16.8		ug/Kg		102	69 - 120	0	20
Endosulfan I	16.4	15.9		ug/Kg		97	62 - 120	1	20
Endosulfan II	16.4	16.5		ug/Kg		100	65 - 120	0	35
alpha-BHC	16.4	14.4		ug/Kg		88	62 - 120	2	20
beta-BHC	16.4	15.7		ug/Kg		96	74 - 124	1	20
gamma-BHC (Lindane)	16.4	15.1		ug/Kg		92	72 - 120	2	20
delta-BHC	16.4	12.7		ug/Kg		77	43 - 125	1	20
Endosulfan sulfate	16.4	16.6		ug/Kg		101	67 - 120	0	20
Methoxychlor	16.4	18.0		ug/Kg		110	71 - 132	0	20
alpha-Chlordane	16.4	16.2		ug/Kg		99	70 - 120	1	20
gamma-Chlordane	16.4	16.3		ug/Kg		99	68 - 120	2	20

Surrogate	LCSD		Limits
	%Recovery	Qualifier	
Tetrachloro-m-xylene	90		57 - 122
DCB Decachlorobiphenyl	106		21 - 136

QC Association Summary

Client: Engeo, Inc.
Project/Site: Jordan Ranch

TestAmerica Job ID: 720-58581-1

GC Semi VOA

Analysis Batch: 162999

Lab Sample ID	Client Sample ID	Prep Type	Matrix	Method	Prep Batch
720-58581-1	N	Silica Gel Cleanup	Solid	8015B	163021
720-58581-3	E	Silica Gel Cleanup	Solid	8015B	163021
720-58581-4	W	Silica Gel Cleanup	Solid	8015B	163021

Analysis Batch: 163000

Lab Sample ID	Client Sample ID	Prep Type	Matrix	Method	Prep Batch
LCS 720-163021/2-A	Lab Control Sample	Silica Gel Cleanup	Solid	8015B	163021
LCSD 720-163021/3-A	Lab Control Sample Dup	Silica Gel Cleanup	Solid	8015B	163021
MB 720-163021/1-A	Method Blank	Silica Gel Cleanup	Solid	8015B	163021

Prep Batch: 163009

Lab Sample ID	Client Sample ID	Prep Type	Matrix	Method	Prep Batch
720-58581-1	N	Total/NA	Solid	3546	
720-58581-2	S	Total/NA	Solid	3546	
720-58581-3	E	Total/NA	Solid	3546	
720-58581-4	W	Total/NA	Solid	3546	
LCS 720-163009/2-A	Lab Control Sample	Total/NA	Solid	3546	
LCSD 720-163009/3-A	Lab Control Sample Dup	Total/NA	Solid	3546	
MB 720-163009/1-A	Method Blank	Total/NA	Solid	3546	

Prep Batch: 163021

Lab Sample ID	Client Sample ID	Prep Type	Matrix	Method	Prep Batch
720-58581-1	N	Silica Gel Cleanup	Solid	3546	
720-58581-2	S	Silica Gel Cleanup	Solid	3546	
720-58581-3	E	Silica Gel Cleanup	Solid	3546	
720-58581-4	W	Silica Gel Cleanup	Solid	3546	
LCS 720-163021/2-A	Lab Control Sample	Silica Gel Cleanup	Solid	3546	
LCSD 720-163021/3-A	Lab Control Sample Dup	Silica Gel Cleanup	Solid	3546	
MB 720-163021/1-A	Method Blank	Silica Gel Cleanup	Solid	3546	

Analysis Batch: 163064

Lab Sample ID	Client Sample ID	Prep Type	Matrix	Method	Prep Batch
720-58581-2	S	Silica Gel Cleanup	Solid	8015B	163021

Analysis Batch: 163071

Lab Sample ID	Client Sample ID	Prep Type	Matrix	Method	Prep Batch
720-58581-1	N	Total/NA	Solid	8081A	163009
720-58581-2	S	Total/NA	Solid	8081A	163009
720-58581-3	E	Total/NA	Solid	8081A	163009
720-58581-4	W	Total/NA	Solid	8081A	163009
LCS 720-163009/2-A	Lab Control Sample	Total/NA	Solid	8081A	163009
LCSD 720-163009/3-A	Lab Control Sample Dup	Total/NA	Solid	8081A	163009
MB 720-163009/1-A	Method Blank	Total/NA	Solid	8081A	163009

Lab Chronicle

Client: Engeo, Inc.
Project/Site: Jordan Ranch

TestAmerica Job ID: 720-58581-1

Client Sample ID: N

Lab Sample ID: 720-58581-1

Date Collected: 07/11/14 09:45

Matrix: Solid

Date Received: 07/11/14 10:45

Prep Type	Batch Type	Batch Method	Run	Dilution Factor	Batch Number	Prepared or Analyzed	Analyst	Lab
Silica Gel Cleanup	Prep	3546			163021	07/15/14 14:12	STL	TAL PLS
Silica Gel Cleanup	Analysis	8015B		1	162999	07/16/14 01:54	JL	TAL PLS
Total/NA	Prep	3546			163009	07/15/14 14:11	CJG	TAL PLS
Total/NA	Analysis	8081A		1	163071	07/16/14 16:20	MQL	TAL PLS

Client Sample ID: S

Lab Sample ID: 720-58581-2

Date Collected: 07/11/14 09:50

Matrix: Solid

Date Received: 07/11/14 10:45

Prep Type	Batch Type	Batch Method	Run	Dilution Factor	Batch Number	Prepared or Analyzed	Analyst	Lab
Silica Gel Cleanup	Prep	3546			163021	07/15/14 14:12	STL	TAL PLS
Silica Gel Cleanup	Analysis	8015B		3	163064	07/16/14 11:08	JL	TAL PLS
Total/NA	Prep	3546			163009	07/15/14 14:11	CJG	TAL PLS
Total/NA	Analysis	8081A		1	163071	07/16/14 16:36	MQL	TAL PLS

Client Sample ID: E

Lab Sample ID: 720-58581-3

Date Collected: 07/11/14 09:57

Matrix: Solid

Date Received: 07/11/14 10:45

Prep Type	Batch Type	Batch Method	Run	Dilution Factor	Batch Number	Prepared or Analyzed	Analyst	Lab
Silica Gel Cleanup	Prep	3546			163021	07/15/14 14:12	STL	TAL PLS
Silica Gel Cleanup	Analysis	8015B		1	162999	07/16/14 02:18	JL	TAL PLS
Total/NA	Prep	3546			163009	07/15/14 14:11	CJG	TAL PLS
Total/NA	Analysis	8081A		1	163071	07/16/14 16:53	MQL	TAL PLS

Client Sample ID: W

Lab Sample ID: 720-58581-4

Date Collected: 07/11/14 10:02

Matrix: Solid

Date Received: 07/11/14 10:45

Prep Type	Batch Type	Batch Method	Run	Dilution Factor	Batch Number	Prepared or Analyzed	Analyst	Lab
Silica Gel Cleanup	Prep	3546			163021	07/15/14 14:12	STL	TAL PLS
Silica Gel Cleanup	Analysis	8015B		1	162999	07/16/14 00:41	JL	TAL PLS
Total/NA	Prep	3546			163009	07/15/14 14:11	CJG	TAL PLS
Total/NA	Analysis	8081A		1	163071	07/16/14 17:10	MQL	TAL PLS

Laboratory References:

TAL PLS = TestAmerica Pleasanton, 1220 Quarry Lane, Pleasanton, CA 94566, TEL (925)484-1919

Certification Summary

Client: Engeo, Inc.
Project/Site: Jordan Ranch

TestAmerica Job ID: 720-58581-1

Laboratory: TestAmerica Pleasanton

All certifications held by this laboratory are listed. Not all certifications are applicable to this report.

Authority	Program	EPA Region	Certification ID	Expiration Date
California	State Program	9	2496	01-31-16

- 1
- 2
- 3
- 4
- 5
- 6
- 7
- 8
- 9
- 10
- 11
- 12
- 13
- 14

Method Summary

Client: Engeo, Inc.
Project/Site: Jordan Ranch

TestAmerica Job ID: 720-58581-1

Method	Method Description	Protocol	Laboratory
8015B	Diesel Range Organics (DRO) (GC)	SW846	TAL PLS
8081A	Organochlorine Pesticides (GC)	SW846	TAL PLS

Protocol References:

SW846 = "Test Methods For Evaluating Solid Waste, Physical/Chemical Methods", Third Edition, November 1986 And Its Updates.

Laboratory References:

TAL PLS = TestAmerica Pleasanton, 1220 Quarry Lane, Pleasanton, CA 94566, TEL (925)484-1919



Sample Summary

Client: Engeo, Inc.
Project/Site: Jordan Ranch

TestAmerica Job ID: 720-58581-1

Lab Sample ID	Client Sample ID	Matrix	Collected	Received
720-58581-1	N	Solid	07/11/14 09:45	07/11/14 10:45
720-58581-2	S	Solid	07/11/14 09:50	07/11/14 10:45
720-58581-3	E	Solid	07/11/14 09:57	07/11/14 10:45
720-58581-4	W	Solid	07/11/14 10:02	07/11/14 10:45

- 1
- 2
- 3
- 4
- 5
- 6
- 7
- 8
- 9
- 10
- 11
- 12
- 13
- 14

TestAmerica

THE LEADER IN ENVIRONMENTAL TESTING

TESTAMERICA San Francisco Chain of Custody
 1220 Quarry Lane • Pleasanton CA 94566-4756
 Phone: (925) 484-1919 • Fax: (925) 600-3002

Reference #: 154902

Date 7/11/14 Page 1 of 1

7/18/2014

720-58581

Report To **Analysis Request**

Attn: <u>Morgan Johnson</u>					Volatile Organics GC/MS (VOCs) <input type="checkbox"/> EPA 8260B HVOCs by <input type="checkbox"/> EPA 8260B EPA 8260B: <input type="checkbox"/> Gas <input type="checkbox"/> BTEX <input type="checkbox"/> 6 Oxygenates <input type="checkbox"/> DCA, EDB <input type="checkbox"/> Ethanol TEPH EPA 8015B <input checked="" type="checkbox"/> Silica Gel <input checked="" type="checkbox"/> Diesel <input type="checkbox"/> Motor Oil <input type="checkbox"/> Other _____ SemiVolatile Organics GC/MS <input type="checkbox"/> EPA 8270C PNA/PAH's by <input type="checkbox"/> 8270C <input type="checkbox"/> 8270C SIM Oil and Grease (EPA 1664/9071) <input type="checkbox"/> Total Pesticides <input checked="" type="checkbox"/> EPA 8081 <input type="checkbox"/> EPA 8082 PCBs CAM17 Metals (EPA 6010/7470/7471) Metals: <input type="checkbox"/> 6010B <input type="checkbox"/> 200.7 <input type="checkbox"/> Lead <input type="checkbox"/> LUFT <input type="checkbox"/> RCRA <input type="checkbox"/> Other _____ Metals: <input type="checkbox"/> 6020 <input type="checkbox"/> 200.8 (CP-MS) <input type="checkbox"/> W.E.T (STLC) <input type="checkbox"/> TCLP <input type="checkbox"/> W.E.T (Dt) Hex Chrom by <input type="checkbox"/> EPA 7196 <input type="checkbox"/> or EPA 7199 pH <input type="checkbox"/> 8040 <input type="checkbox"/> SM4500 <input type="checkbox"/> Spec. Cond. <input type="checkbox"/> Alkalinity <input type="checkbox"/> TSS <input type="checkbox"/> SS <input type="checkbox"/> TDS Anions: <input type="checkbox"/> Cl <input type="checkbox"/> SO ₄ <input type="checkbox"/> NO ₃ <input type="checkbox"/> F <input type="checkbox"/> Br <input type="checkbox"/> NO ₂ <input type="checkbox"/> PO ₄ <input type="checkbox"/> Perchlorate by EPA 314.0 COD <input type="checkbox"/> EPA 410.4 <input type="checkbox"/> SM5220D <input type="checkbox"/> Turbidity
Company: <u>ENGEO</u>					
Address:					
Email: <u>mjohnson@engeo.com</u>					
Bill To:		Sampled By: <u>Matt M.</u>			
Attn:		Phone: <u>209-681-6825</u>			
Sample ID	Date	Time	Mat rix	Preserv	
<u>N</u>	<u>7/11/14</u>	<u>9:45am</u>	<u>S</u>	<u>-</u>	
<u>S</u>	<u>7/11/14</u>	<u>9:50am</u>	<u>S</u>	<u>-</u>	
<u>E</u>	<u>7/11/14</u>	<u>9:57am</u>	<u>S</u>	<u>-</u>	
<u>W</u>	<u>7/11/14</u>	<u>10:02am</u>	<u>S</u>	<u>-</u>	

Project Info.		Sample Receipt		1) Relinquished by:		2) Relinquished by:		3) Relinquished by:	
Project Name/ #: <u>Jordan Ranch</u>		# of Containers:		Signature: <u>[Signature]</u> Time: <u>10:45am</u>		Signature: _____ Time: _____		Signature: _____ Time: _____	
PO#: _____		Head Space:		Printed Name: <u>Matthew Miller</u> Date: <u>7/11/14</u>		Printed Name: _____ Date: _____		Printed Name: _____ Date: _____	
Temp: <u>21.9°C</u>		Credit Card Y/N: _____ If yes, please call with payment information ASAP		Company: _____		Company: _____		Company: _____	
TAT: 10 Day <input type="checkbox"/> 5 Day <input checked="" type="checkbox"/> 4 Day <input type="checkbox"/> 3 Day <input type="checkbox"/> 2 Day <input type="checkbox"/> 1 Day <input type="checkbox"/> Other: _____		1) Received by:		2) Received by:		3) Received by:			
Report: <input type="checkbox"/> Routine <input type="checkbox"/> Level 3 <input type="checkbox"/> Level 4 <input type="checkbox"/> EDD <input type="checkbox"/> EDF Special Instructions / Comments: <input type="checkbox"/> Global ID _____		Signature: <u>[Signature]</u> Time: <u>1045</u>		Signature: _____ Time: _____		Signature: _____ Time: _____		Signature: _____ Time: _____	
Printed Name: <u>Bryan Thomas</u> Date: <u>7/11/14</u>		Printed Name: _____ Date: _____		Printed Name: _____ Date: _____		Printed Name: _____ Date: _____		Printed Name: _____ Date: _____	
Company: <u>TestAmerica</u>		Company: _____		Company: _____		Company: _____		Company: _____	

See Terms and Conditions on reverse

Login Sample Receipt Checklist

Client: Engeo, Inc.

Job Number: 720-58581-1

Login Number: 58581

List Source: TestAmerica Pleasanton

List Number: 1

Creator: Gonzales, Justinn

Question	Answer	Comment
Radioactivity wasn't checked or is <=/ background as measured by a survey meter.	N/A	
The cooler's custody seal, if present, is intact.	N/A	
Sample custody seals, if present, are intact.	N/A	
The cooler or samples do not appear to have been compromised or tampered with.	True	
Samples were received on ice.	True	
Cooler Temperature is acceptable.	True	
Cooler Temperature is recorded.	True	
COC is present.	True	
COC is filled out in ink and legible.	True	
COC is filled out with all pertinent information.	True	
Is the Field Sampler's name present on COC?	True	
There are no discrepancies between the containers received and the COC.	True	
Samples are received within Holding Time.	True	
Sample containers have legible labels.	True	
Containers are not broken or leaking.	True	
Sample collection date/times are provided.	True	
Appropriate sample containers are used.	True	
Sample bottles are completely filled.	True	
Sample Preservation Verified.	N/A	
There is sufficient vol. for all requested analyses, incl. any requested MS/MSDs	True	
Containers requiring zero headspace have no headspace or bubble is <6mm (1/4").	True	
Multiphasic samples are not present.	True	
Samples do not require splitting or compositing.	True	
Residual Chlorine Checked.	N/A	



July 29, 2014

Subject: Jordan Ranch Property – Former Leaking Underground Storage Tank
Dublin, California

PERJURY STATEMENT

“I declare, that to the best of my knowledge at the present time, the information and/or recommendations contained in the attached document are true and correct.”

Submitted by Responsible Party:



ROBERT RADANOVICH
BJP-ROF Jordan Ranch, LLC
5000 Hopyard Road, #170
Pleasanton, CA 94588