

Wickham, Jerry, Env. Health

From: Roe, Dilan, Env. Health
Sent: Wednesday, October 30, 2013 12:59 PM
To: Wickham, Jerry, Env. Health
Subject: FW: Jordan Ranch, Dublin
Attachments: 7828000001-FIG2-3-JordanRanch-0913-REVIEW9.pdf; Boring Logs.pdf; Well Construction Diagram.pdf; 7828000001_Summary Analytical Soil Data.xlsx; 7828000001_Summary Analytical Soil Gas Data.xlsx; 7828000001_Summary Analytical Water Data.xlsx

Dilan Roe, P.E.

Program Manager - Land Use & Local Oversight Program

Alameda County Environmental Health

1131 Harbor Bay Parkway

Alameda, CA 94502

510.567.6767; Ext. 36767

QIC: 30440

dilan.roe@acgov.org

PDF copies of case files can be reviewed/downloaded at:

<http://www.acgov.org/aceh/lop/ust.htm>

From: Jeff Adams [<mailto:jaa@engeo.com>]
Sent: Wednesday, October 09, 2013 4:02 PM
To: Roe, Dilan, Env. Health
Cc: Shawn Munger
Subject: Jordan Ranch, Dublin

Good afternoon, Dilan:

We have completed our field investigations at Jordan Ranch in Dublin. Please see attached a compilation of our recently collected data. This includes a tabular summary of the recently collected samples as well as historic data for soil, groundwater and soil gas, a site figure depicting concentration summaries at sampled locations for COCs, boring logs, and proposed well details. Based on the results, we propose to put in 2 sets of wells (2 wells) each, depicted as MW-6A and 6B and MW-7A and 7B, respectively. MW-6A and MW-7A will each extend to a depth of 19 feet bgs and screened from 9 to 19 feet bgs; while MW-6B and MW-7B will each extend to a depth of 30 feet bgs and screened from 20 to 30 feet bgs.

Please let me know if you have any questions or comments; we look forward to receiving a go-ahead so we can install the wells as soon as possible. Right now we are tentatively scheduled to install the wells beginning October 23.

Thank you,
Jeff

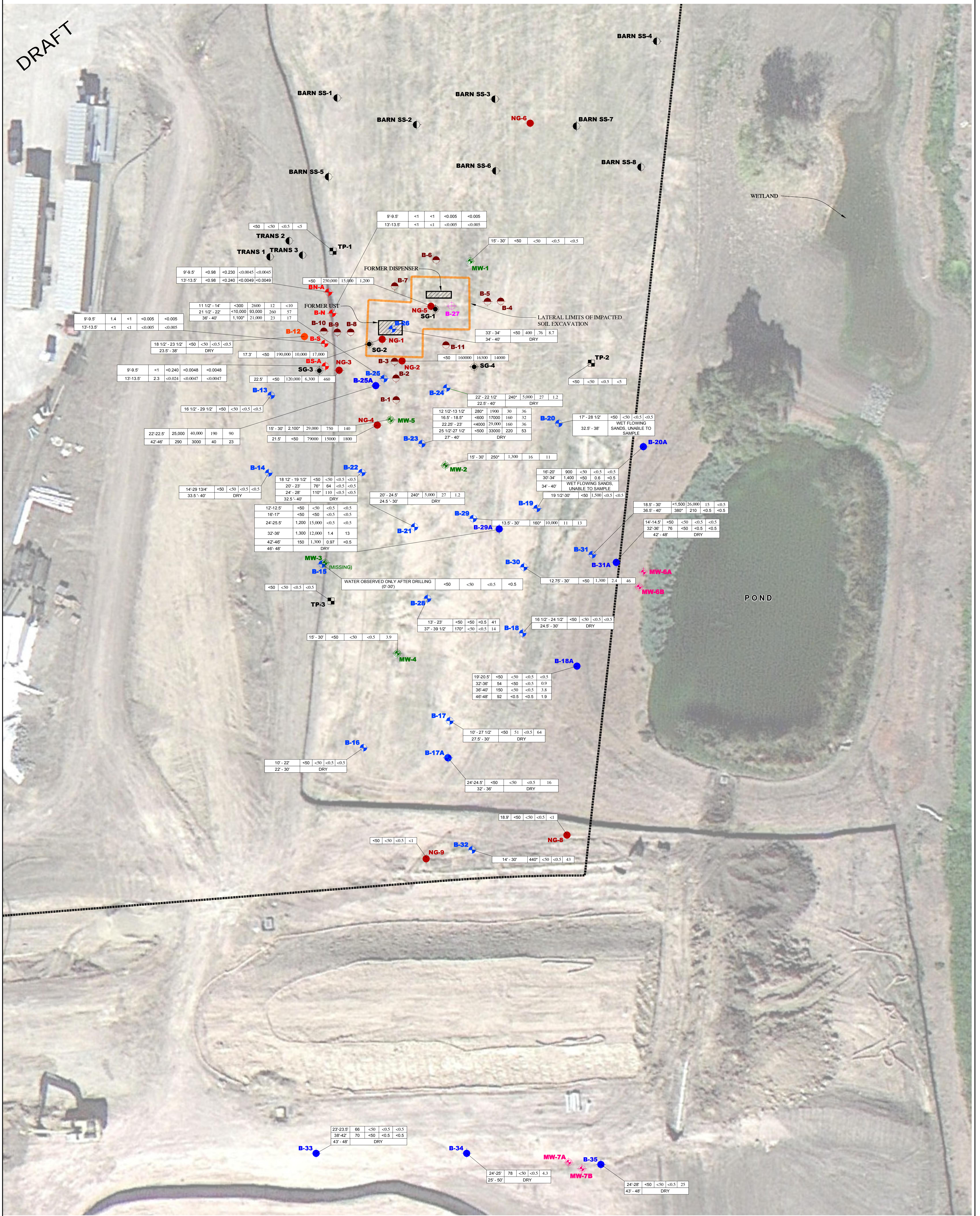
Jeffrey A. Adams, PhD, PE
Associate



ENGEO Incorporated
2010 Crow Canyon Place, Suite 250
San Ramon, CA 94583
(925) 866-9000 Phone
(888) 279-2698 Fax
www.engeo.com

*****Due to the potential that information by electronic media can deteriorate, be damaged, lost or modified unintentionally or otherwise, use of this electronic data by anyone other than ENGEO Incorporated shall be at the sole risk of such user and without liability or legal exposure to ENGEO Incorporated. The recipient is responsible for verifying the accuracy of data against governing hard copy documentation. Recipient assumes all risks in the changing or modification of data and revisions or updating of hard copy documents. *****

DRAFT

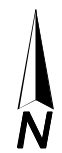
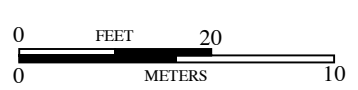


EXPLANATION

- TRANS 3** APPROXIMATE LOCATION OF SURFACE SOIL SAMPLE (ENGeo, 9-2013)
- BS-A** APPROXIMATE LOCATION OF GRAB SOIL SAMPLE (REPORTED IN (mg/kg) (ENGeo, 9-2013)
- MW-7B** APPROXIMATE LOCATION OF PROPOSED MONITORING WELL
- B-35** APPROXIMATE LOCATION OF GRAB GROUNDWATER SAMPLE (ENGeo, 9-2013)
- MW-5** APPROXIMATE LOCATION OF MONITORING WELL (OCTOBER 2012)
- NG-5** APPROXIMATE LOCATION OF GRAB GROUNDWATER SAMPLE (NEM, 2006)
- TP-3** APPROXIMATE LOCATION OF GRAB GROUNDWATER SAMPLE (ICES, 2006)
- B-11** APPROXIMATE LOCATION OF SOIL BORING FOR SOIL SAMPLING AND PID SCREENING (ENGeo, 2012)
- B-12** APPROXIMATE LOCATION OF SOIL AND GRAB GROUNDWATER SAMPLE (ENGeo 2012/2013)
- B-32** APPROXIMATE LOCATION OF GRAB GROUNDWATER SAMPLE SURVEYED WITH GPS (ENGeo 2012/2013)
- B-27** APPROXIMATE LOCATION OF SOIL SAMPLE ONLY (ENGeo 2012/2013)
- SG-4** APPROXIMATE LOCATION OF SOIL GAS WELL

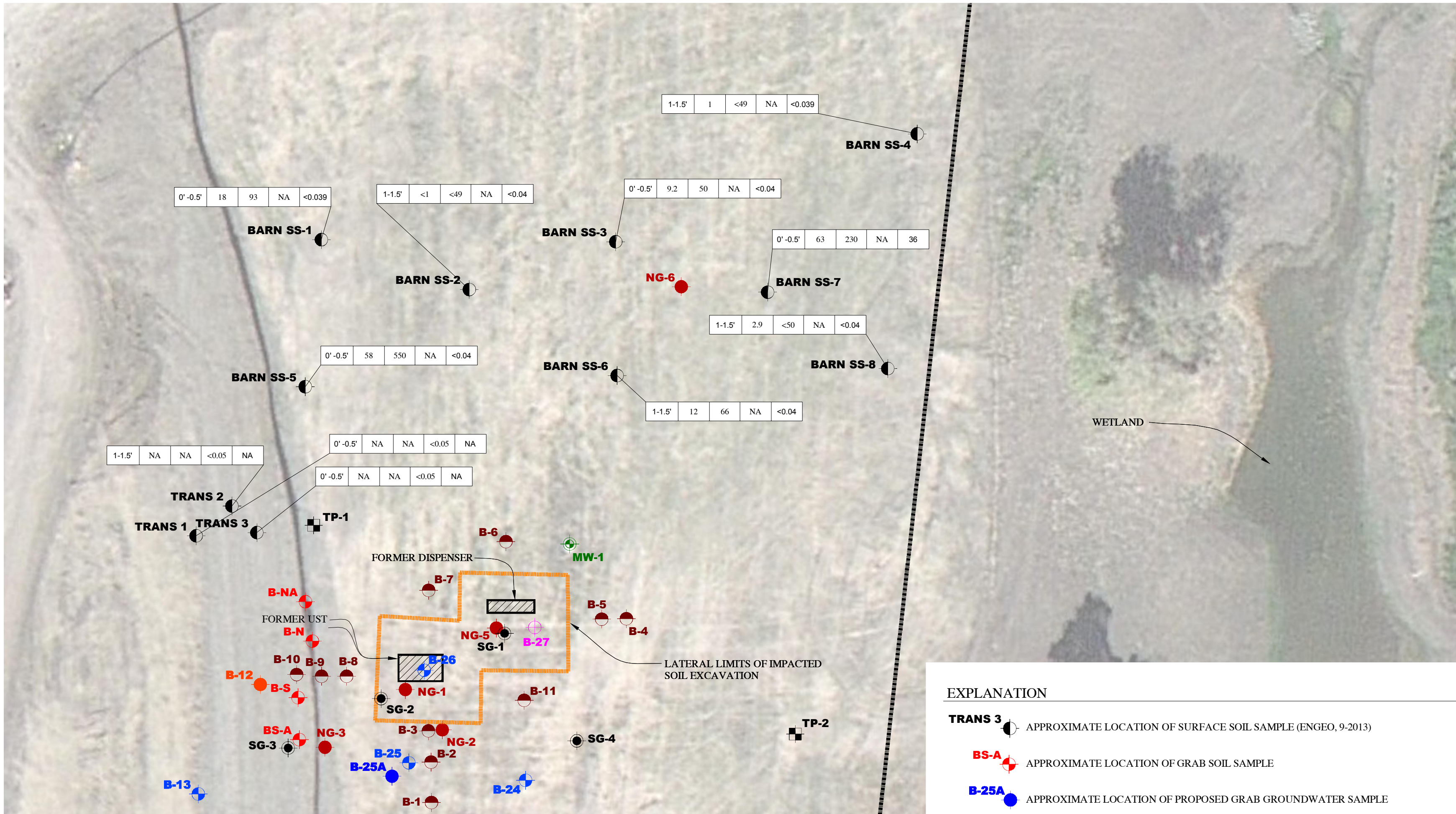
* NOTE FOR DIESEL DETECTIONS: MULTIPLE LABORATORIES REPORTED QUALIFIERS FOR THE TPHd DETECTIONS, STATING THEY ARE REPRESENTATIVE OF A WEATHERED GASOLINE FRACTION AND ARE NOT CONSISTENT WITH THE TYPICAL DIESEL CHROMATOGRAM

X	MTBE CONCENTRATION
X	BENZENE CONCENTRATION
X	TOTAL PETROLEUM HYDROCARBONS AS GASOLINE (TPH _g)
X	TOTAL PETROLEUM HYDROCARBONS AS DIESEL (TPH _d)
X	WATER ZONE SAMPLED
X	ALL REPORTED IN MICROGRAMS PER LITER (ug/l)



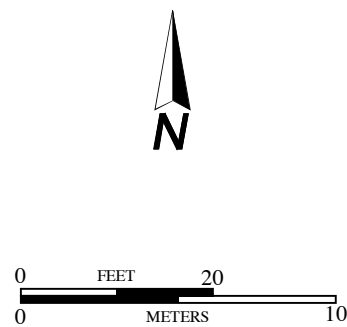
DRAFT

DRAFT



EXPLANATION

- TRANS 3** APPROXIMATE LOCATION OF SURFACE SOIL SAMPLE (ENGE0, 9-2013)
- BS-A** APPROXIMATE LOCATION OF GRAB SOIL SAMPLE
- B-25A** APPROXIMATE LOCATION OF PROPOSED GRAB GROUNDWATER SAMPLE
- MW-5** APPROXIMATE LOCATION OF MONITORING WELL (OCTOBER 2012)
- NG-5** APPROXIMATE LOCATION OF GRAB GROUNDWATER SAMPLE (NEM, 2006)
- TP-3** APPROXIMATE LOCATION OF GRAB GROUNDWATER SAMPLE (ICES, 2006)
- B-11** APPROXIMATE LOCATION OF SOIL BORING FOR SOIL SAMPLING AND PID SCREENING (ENGE0, 2012)
- B-12** APPROXIMATE LOCATION OF SOIL AND GRAB GROUNDWATER SAMPLE (ENGE0 2012/2013)
- B-32** APPROXIMATE LOCATION OF GRAB GROUNDWATER SAMPLE SURVEYED WITH GPS (ENGE0 2012/2013)
- B-27** APPROXIMATE LOCATION OF SOIL SAMPLE ONLY (ENGE0 2012/2013)
- SG-4** APPROXIMATE LOCATION OF SOIL GAS WELL



x	x	x	x	x
				TOXAPHENE
				PCB'S
				TOTAL PETROLEUM HYDROCARBONS AS MOTOR OIL
				TOTAL PETROLEUM HYDROCARBONS AS DIESEL (TPHd)
				DEPTH
ALL REPORTED IN MICROGRAMS PER LITER (mg/kg)				

BASE MAP SOURCE: UNKNOWN

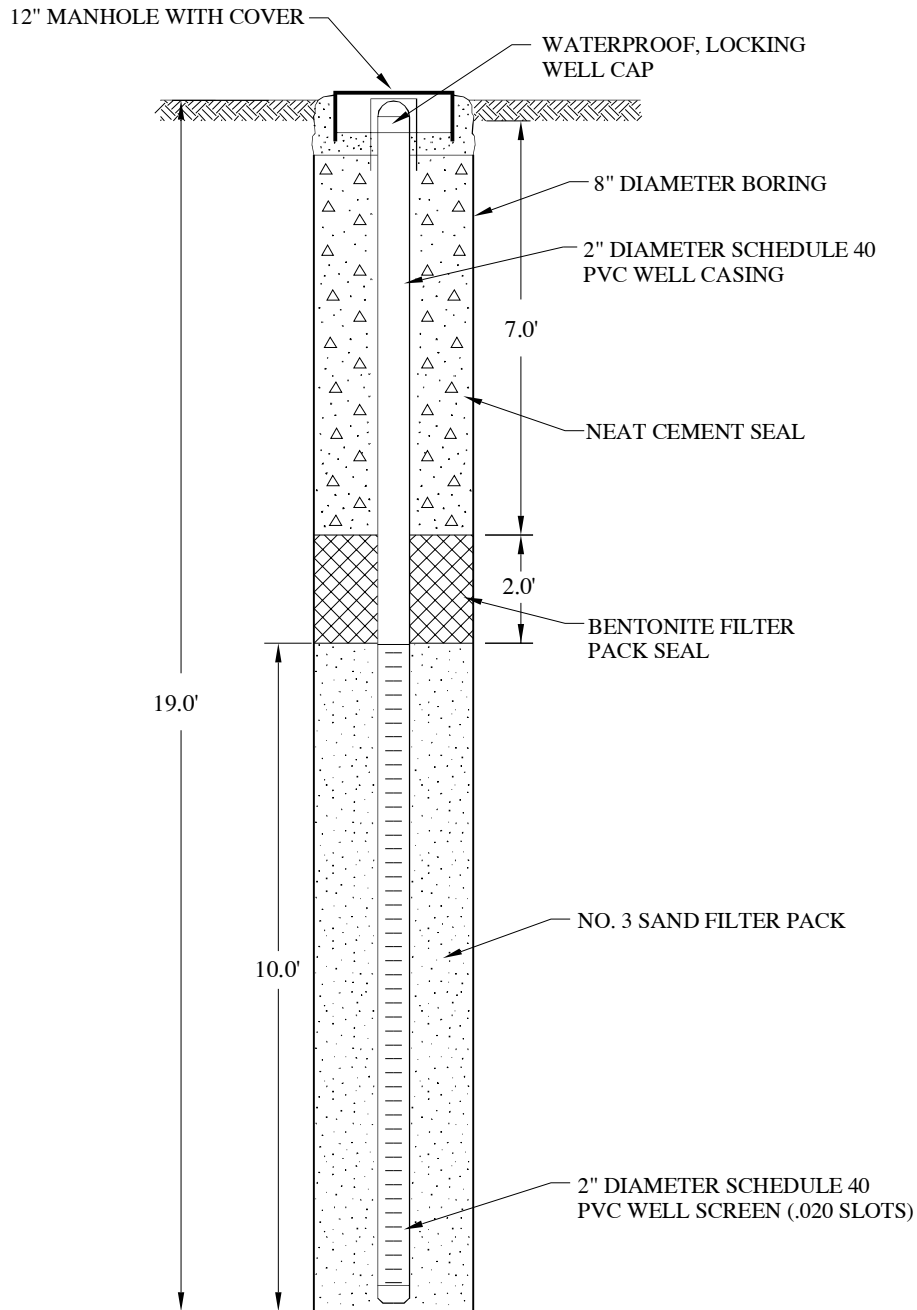


SURFACE SOIL INVESTIGATION
 JORDAN RANCH - PARCEL H
 DUBLIN, CALIFORNIA

PROJECT NO.: 7828.000.001	FIGURE NO. 3
SCALE: AS SHOWN	
DRAWN BY: LL	CHECKED BY: SM


DRAFT

DRAFT



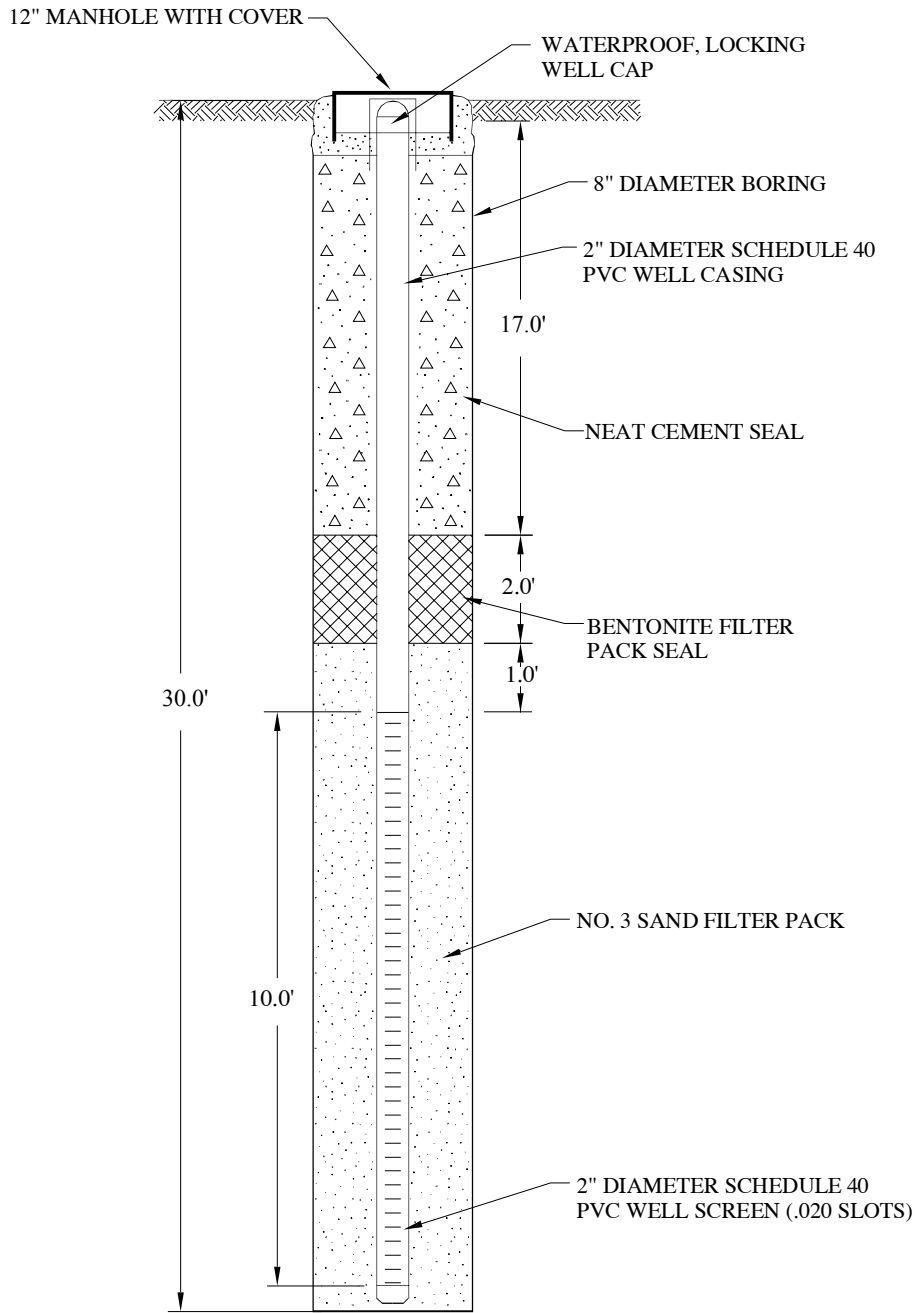
DRAFT

COPYRIGHT © 2013 BY ENGeo INCORPORATED. THIS DOCUMENT MAY NOT BE REPRODUCED IN WHOLE OR IN PART BY ANY MEANS WHATSOEVER, NOR MAY IT BE QUOTED OR EXCERPTED WITHOUT THE EXPRESS WRITTEN CONSENT OF ENGeo INCORPORATED.

	PROPOSED MONITORING WELL CONSTRUCTION MW-6A JORDAN RANCH - PARCEL H DUBLIN, CALIFORNIA	PROJECT NO.: 7828.000.001	FIGURE NO.
		SCALE: NO SCALE	3A
		DRAWN BY: SRP	

COPYRIGHT © 2013 BY ENGeo INCORPORATED. THIS DOCUMENT MAY NOT BE REPRODUCED IN WHOLE OR IN PART BY ANY MEANS WHATSOEVER, NOR MAY IT BE QUOTED OR EXCERPTED WITHOUT THE EXPRESS WRITTEN CONSENT OF ENGeo INCORPORATED.

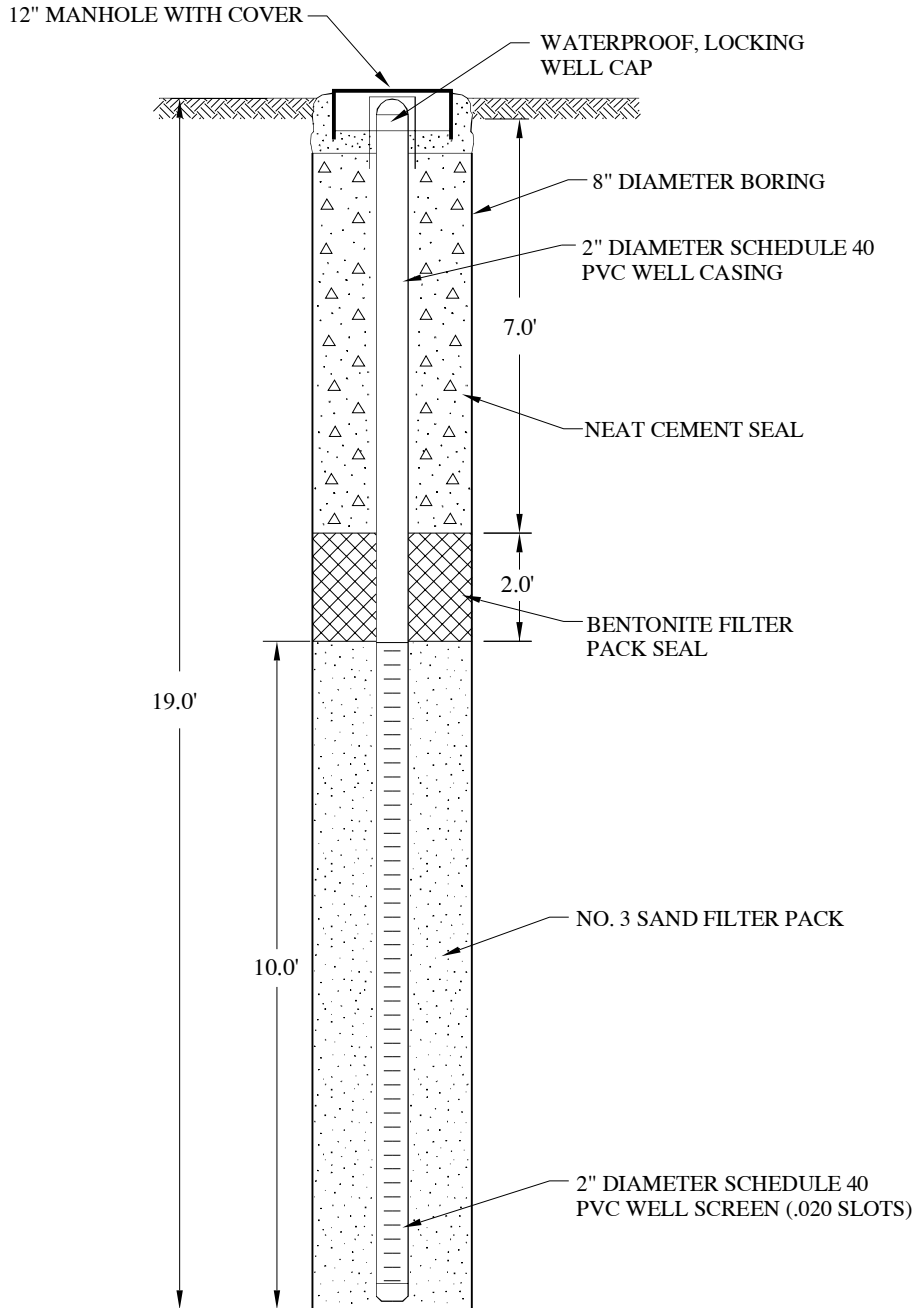
DRAFT



DRAFT

	PROPOSED MONITORING WELL CONSTRUCTION MW-6B JORDAN RANCH - PARCEL H DUBLIN, CALIFORNIA	PROJECT NO.: 7828.000.001		FIGURE NO. 3B
		SCALE: NO SCALE		
		DRAWN BY: SRP	CHECKED BY: SM	

DRAFT



DRAFT



PROPOSED MONITORING WELL CONSTRUCTION MW-7A
 JORDAN RANCH - PARCEL H
 DUBLIN, CALIFORNIA

PROJECT NO.: 7828.000.001

SCALE: NO SCALE

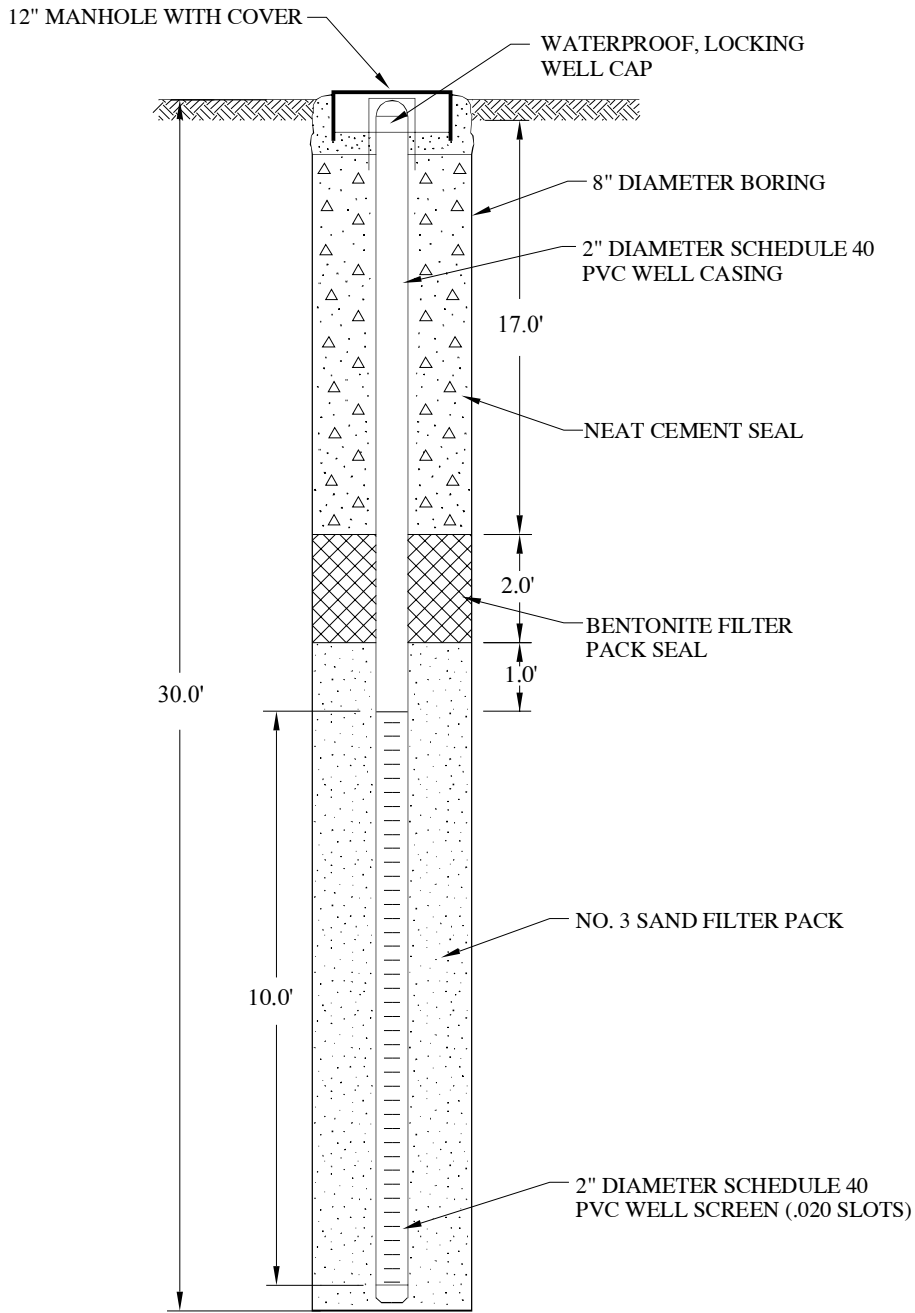
DRAWN BY: SRP

CHECKED BY: SM

FIGURE NO.
3C

COPYRIGHT © 2013 BY ENGeo INCORPORATED. THIS DOCUMENT MAY NOT BE REPRODUCED IN WHOLE OR IN PART BY ANY MEANS WHATSOEVER, NOR MAY IT BE QUOTED OR EXCERPTED WITHOUT THE EXPRESS WRITTEN CONSENT OF ENGeo INCORPORATED.

DRAFT



DRAFT



PROPOSED MONITORING WELL CONSTRUCTION MW-7B

JORDAN RANCH - PARCEL H

DUBLIN, CALIFORNIA

PROJECT NO.: 7828.000.001	
SCALE: NO SCALE	
DRAWN BY: SRP	CHECKED BY: SM

FIGURE NO.

3D