

From: [Shawn Munger](#)
To: [Roe, Dilan, Env. Health](#)
Subject: FW: Jordan Ranch
Date: Tuesday, May 21, 2013 11:51:45 AM
Attachments: [image001.png](#)
[7828000001-ParcelH-1-GroundwaterAssessment-0513-REVIEW5.pdf](#)

Hello Dilan,

Attached are the empirical and theoretical isoconcentration plots.

Also, with regard to the existing detention basin to the south, the basin is currently used as a construction de-siltation/detention basin that receives runoff from the greater Jordan Ranch project to the north. The basin includes a vertical outflow standpipe that drains to the storm drain system under high flow conditions. Post-construction, the silt will be removed from the basin and a sand filter liner will be constructed at the base. The structure will then serve as a bioretention basin for storm water quality. There will be an outflow from the detention basin to accommodate a design flood event that could potentially inundate the basin. I understand both Zone 7 and the RWQCB have approved this design.

Thank You,

Shawn Munger, CHG, PG, EM

Principal



2213 Plaza Drive

Rocklin, CA 95765

(916) 786-8883

Direct: (916) 580-6535

Mobile: (916) 416-9000

(888) 279-2698 Fax

www.engeo.com



If you have feedback for ENGEO please take a moment and fill out a quick [survey](#)

Voted one of the Top 10 Best Places to Work in the United States of America!

*****Due to the potential that information by electronic media can deteriorate, be damaged, lost or modified unintentionally or otherwise, use of this electronic data by anyone other than ENGEO Incorporated shall be at the sole risk of such user and without liability or legal exposure to ENGEO Incorporated. The recipient is responsible for verifying the accuracy of data against governing hard copy documentation. Recipient assumes all risks in the changing or modification of data and revisions or updating of hard copy documents.*****

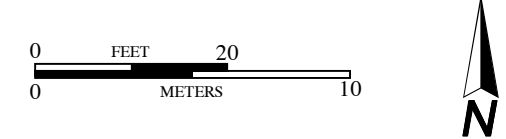
DRAFT



EXPLANATION

- MW-5 APPROXIMATE LOCATION OF MONITORING WELL (OCTOBER 2012)
- B-12 APPROXIMATE LOCATION OF SOIL AND GRAB GROUNDWATER SAMPLE (ENGeo 2012/2013)
- B-32 APPROXIMATE LOCATION OF GRAB GROUNDWATER SAMPLE SURVEYED WITH GPS (ENGeo 2012/2013)

- x METHYL TERT-BUTYL ETHER (MTBE) CONCENTRATION
- 100- MTBE CONCENTRATION CONTOUR, DASHED WHERE ESTIMATED BASED ON NAC CALCULATIONS
- ALL REPORTED IN MICROGRAMS PER LITER (ug/l)



DRAFT

BASE MAP SOURCE: GOOGLE EARTH

<p>Expect Excellence</p>	MTBE CONCENTRATIONS IN GROUNDWATER JORDAN RANCH - PARCEL H DUBLIN, CALIFORNIA	PROJECT NO: 7828.000.001 SCALE: AS SHOWN DRAWN BY: LL	FIGURE NO: 1 CHECKED BY:
	ORIGINAL FIGURE PRINTED IN COLOR		

DRAFT



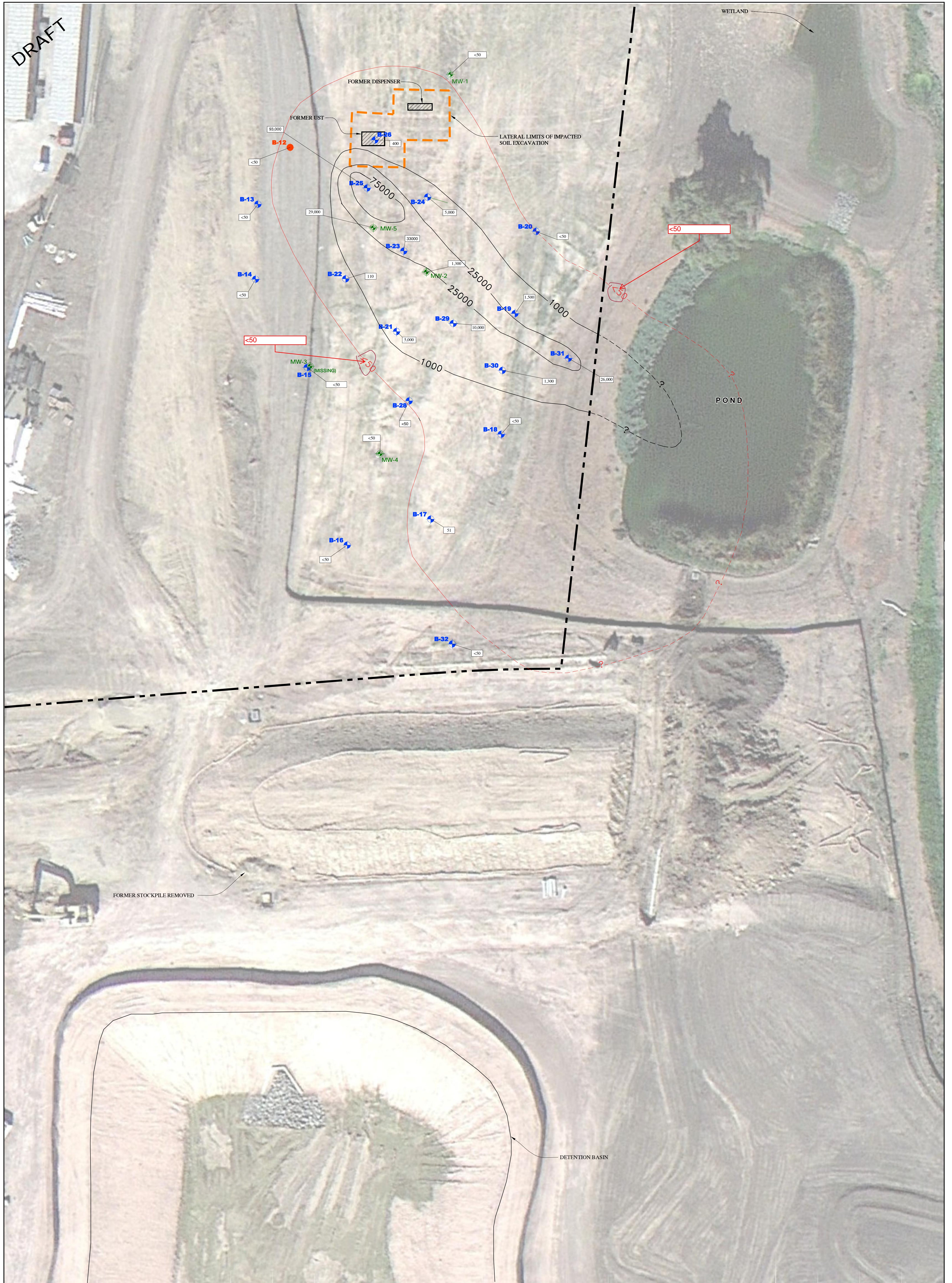
EXPLANATION

- MW-5 APPROXIMATE LOCATION OF MONITORING WELL (OCTOBER 2012)
- B-12 APPROXIMATE LOCATION OF SOIL AND GRAB GROUNDWATER SAMPLE (ENGeo 2012/2013)
- B-32 APPROXIMATE LOCATION OF GRAB GROUNDWATER SAMPLE SURVEYED WITH GPS (ENGeo 2012/2013)
- x BENZENE CONCENTRATION
- 700- BENZENE CONCENTRATION CONTOUR, DASHED WHERE ESTIMATED BASED ON NAC CALCULATIONS
- ALL REPORTED IN MICROGRAMS PER LITER (ug/l)



DRAFT

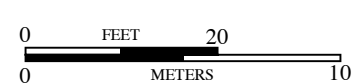
DRAFT



EXPLANATION

- MW-5 APPROXIMATE LOCATION OF MONITORING WELL (OCTOBER 2012)
- B-12 APPROXIMATE LOCATION OF SOIL AND GRAB GROUNDWATER SAMPLE (ENGEO 2012/2013)
- B-32 APPROXIMATE LOCATION OF GRAB GROUNDWATER SAMPLE SURVEYED WITH GPS (ENGEO 2012/2013)

- x TOTAL PETROLEUM HYDROCARBONS AS GASOLINE (TPHg)
- 75000- TPHg CONCENTRATION CONTOUR, DASHED WHERE ESTIMATED BASED ON NAC CALCULATIONS
- ND - NON DETECTED CONTOUR
- ALL REPORTED IN MICROGRAMS PER LITER (ug/l)



DRAFT

BASE MAP SOURCE: GOOGLE EARTH



TPH-g CONCENTRATIONS IN GROUNDWATER
 JORDAN RANCH - PARCEL H
 DUBLIN, CALIFORNIA

PROJECT NO: 7828.000.001
 SCALE: AS SHOWN
 DRAWN BY: II
 CHECKED BY:

FIGURE NO
3