

**From:** [Jeff Adams](#)  
**To:** [Roe, Dilan, Env. Health](#)  
**Subject:** Jordan Ranch - maps and discussion  
**Date:** Friday, February 15, 2013 9:34:06 AM  
**Attachments:** [7828000001-ParcelH-1-GroundwaterAssessment-021113-REVIEW3.pdf](#)  
[Jordan vicinity overview.pdf](#)

---

Good morning, Dilan:

I have attached a couple of figures for your review. One is an aerial vicinity overview of the Jordan Ranch property, the other is a map outlining the results of the groundwater assessment work.

Would you be available for a phone call to discuss in the coming days?

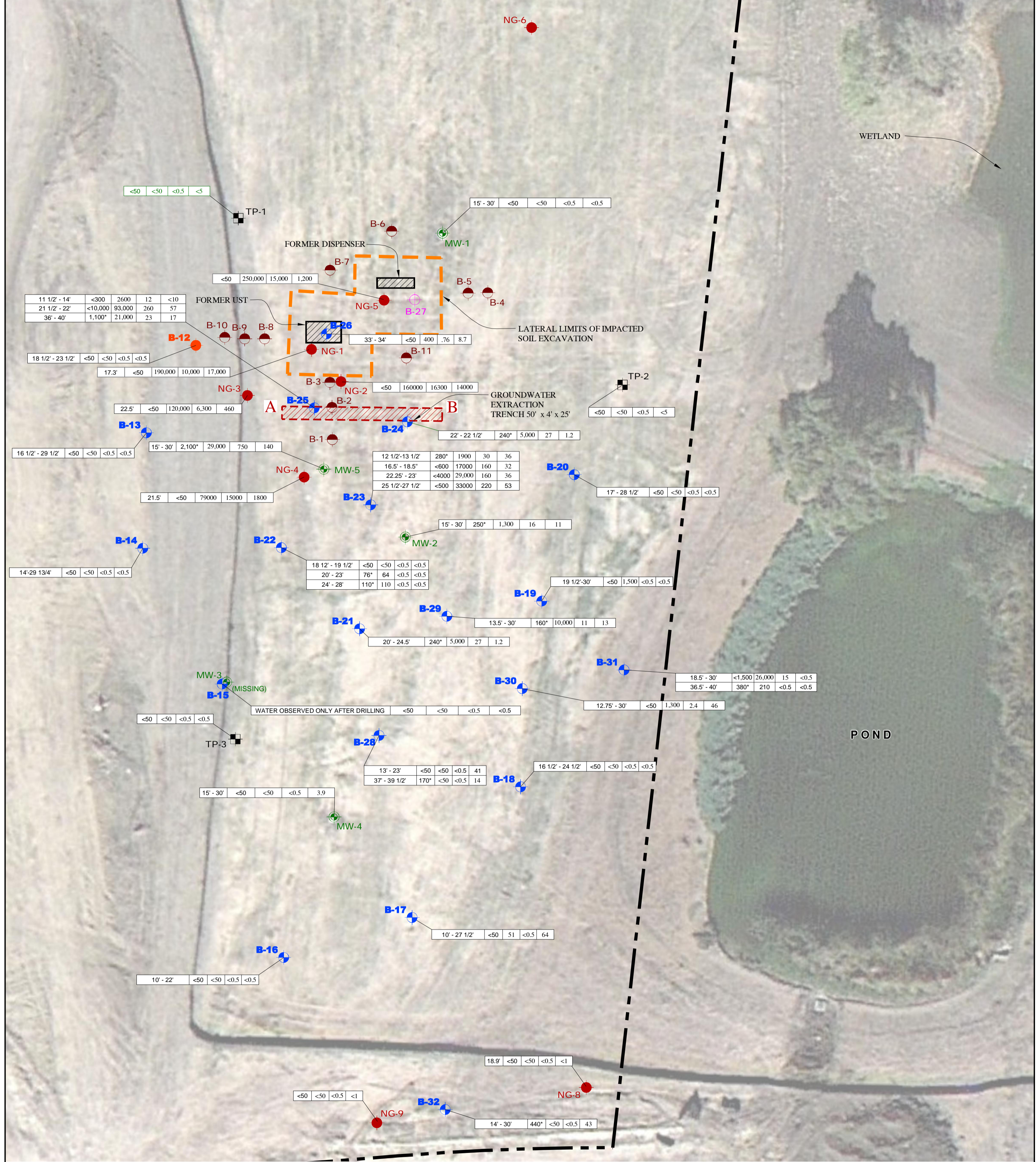
Thank you,  
Jeff

**Jeffrey A. Adams, PhD, PE**  
Associate



ENGEO Incorporated  
2010 Crow Canyon Place, Suite 250  
San Ramon, CA 94583  
(925) 866-9000 Phone  
(888) 279-2698 Fax  
[www.engeo.com](http://www.engeo.com)

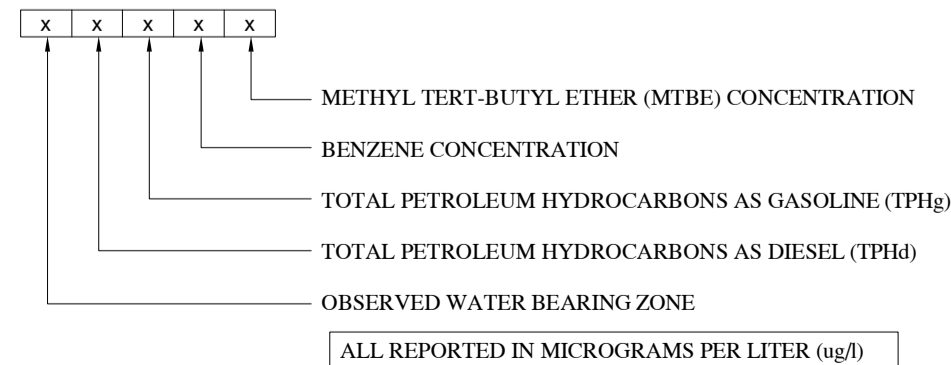
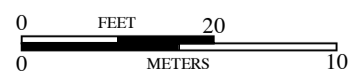
\*\*\*\*\*Due to the potential that information by electronic media can deteriorate, be damaged, lost or modified unintentionally or otherwise, use of this electronic data by anyone other than ENGEO Incorporated shall be at the sole risk of such user and without liability or legal exposure to ENGEO Incorporated. The recipient is responsible for verifying the accuracy of data against governing hard copy documentation. Recipient assumes all risks in the changing or modification of data and revisions or updating of hard copy documents.\*\*\*\*\*



**EXPLANATION**

- MW-5** WELL CONCENTRATIONS REPORTED FOR OCTOBER 2012
- NG-5** APPROXIMATE LOCATION OF GRAB GROUNDWATER SAMPLE (NEM, 2006)
- TP-3** APPROXIMATE LOCATION OF GRAB GROUNDWATER SAMPLE (ICES, 2006)
- B-11** APPROXIMATE LOCATION OF SOIL BORING FOR SOIL SAMPLING AND PID SCREENING (ENGEO, 2012)
- B-12** APPROXIMATE LOCATION OF SOIL AND GRAB GROUNDWATER SAMPLE (ENGEO 2012/2013)
- B-32** APPROXIMATE LOCATION OF GRAB GROUNDWATER SAMPLE SURVEYED WITH GPS (ENGEO 2012/2013)
- B-27** APPROXIMATE LOCATION OF SOIL SAMPLE ONLY (ENGEO 2012/2013)

\* NOTE FOR DIESEL DETECTIONS: MULTIPLE LABORATORIES REPORTED QUALIFIERS FOR THE TPHd DETECTIONS, STATING THEY ARE REPRESENTATIVE OF A WEATHERED GASOLINE FRACTION AND ARE NOT CONSISTENT WITH THE TYPICAL DIESEL CHROMATOGRAM



BASE MAP SOURCE: GOOGLE EARTH



GROUNDWATER ASSESSMENT  
 JORDAN RANCH - PARCEL H  
 DUBLIN, CALIFORNIA

PROJECT NO.: 7828.000.001  
 SCALE: AS SHOWN  
 DRAWN BY: SRP CHECKED BY: SM

FIGURE NO. 1



To see all the details that are visible on the screen, use the "Print" link next to the map.



**From:** Roe, Dilan, Env. Health  
**To:** "[Lockwood, George@Waterboards](mailto:Lockwood.George@Waterboards)"  
**Cc:** [Drogos, Donna, Env. Health](#); "[Ravi Nandwana](#)"; [Jeff Adams](#)  
**Subject:** RE: JORDAN RANCH (T06019797353), 4233 FALLON  
**Date:** Friday, February 15, 2013 4:12:00 PM

---

Hi George:

Thank-you for bringing this to our attention. I have adjusted the site location on the GeoTracker map to accurately locate its position. The monitoring wells are located incorrectly (i.e., they should be located west of the pond rather than to the east as currently site). I have rejected the GEO\_XY and GEO\_Z data on GeoTracker and requested the RP's consultants to verify the survey data, and re-upload to GeoTracker in order to properly locate the wells.

**Dilan Roe, P.E.**

Hazardous Materials Specialist  
Alameda County Environmental Health  
1131 Harbor Bay Parkway  
Alameda, CA 94502  
510.567.6767; Ext. 36767  
QIC: 30440  
[dilan.roe@acgov.org](mailto:dilan.roe@acgov.org)

PDF copies of case files can be reviewed/downloaded at:

<http://www.acgov.org/aceh/lop/ust.htm>

---

**From:** Lockwood, George@Waterboards [mailto:George.Lockwood@waterboards.ca.gov]  
**Sent:** Friday, February 15, 2013 1:07 PM  
**To:** Drogos, Donna, Env. Health; Roe, Dilan, Env. Health  
**Subject:** JORDAN RANCH (T06019797353), 4233 FALLON

Donna

Please check the location of this site in relation with the four ESI points associated with the site. It appears that either the site or the wells are not located correctly. If it is the site, one can relocate it in GeoT. If it is the ESI, the ESI will have to be denied and the re-uploaded.

Thank you