

**RECEIVED**

**9:15 am, Jul 19, 2012**

Alameda County  
Environmental Health

July 13, 2012

Jerry Wickham  
Alameda County Environmental Health Svcs  
1131 Harbor Bay Parkway, Suite 250  
Alameda, CA 94502-6577

Re: Transmittal Letter  
Site Location: Springtown Gas  
909 Blue Bell Drive, Livermore, CA 94551

Dear Mr. Wickham:

On behalf of Aminifilibadi Masood & Amini Sharbano, Geological Technics Inc. (GTI) prepared the Well Abandonment and Site Closure Report, dated July 12, 2012.

I declare under penalty of law that the information and/or recommendations contained in the above referenced document or report is true and correct to the best of my knowledge.

Respectfully submitted,



Aminifilibadi Masood/Amini Sharbano  
Property Owner  
909 Blue Bell Drive  
Livermore, CA 94551

*Geological Technics Inc.* \_\_\_\_\_

## **Report**

### **Well Abandonment & Site Closure Activities**

**Springtown Gas  
909 Bluebell Drive  
Livermore, California**

Project No. 1409.2  
July 12, 2012

**Prepared for:  
Masood Amini Filibadi and Shahrbanu Amini  
909 Bluebell Drive  
Livermore, California 95353**

**Prepared by:  
*Geological Technics Inc.*  
1172 Kansas Avenue  
Modesto, California 95351  
(209) 522-4119  
[www.gtienv.com](http://www.gtienv.com)**

# Geological Technics Inc.

---

1172 Kansas Avenue  
Modesto, California 95351  
(209) 522-4119 / Fax (209) 522-4227  
[www.gtienv.com](http://www.gtienv.com)

July 12, 2012

Project No.: 1409.2  
Project Name: Springtown Gas (Bluebell)

Masood Amini Filibadi and Shahrbanoo Amini  
Springtown Gas  
909 Bluebell Drive  
Livermore, California 94551

RE: Report: Well Abandonment & Site Closure Activities  
Location: Springtown Gas, 909 Bluebell Drive, Livermore, California

Dear Masood Amini Filibadi and Shahrbanoo Amini:

Geological Technics Inc. is pleased to present the attached Report discussing the Well Abandonment work and Site Closure activities performed at 909 Bluebell Drive, Livermore, California. Nine (9) monitoring well and two (2) vapor extraction wells were abandoned in accordance with an Alameda County Environmental Health Services correspondence dated April 12<sup>th</sup>, 2012.

If you have any questions or need additional information, please contact me. Thank you for this opportunity to serve your environmental needs.

Respectfully submitted,



Raynold I. Kablanow II, Ph.D.  
Vice President

cc: Jerry Wickham – ACEHS  
Livermore Zone 7 Agency

## TABLE OF CONTENTS

<b>1.0</b>	<b>INTRODUCTION</b>
1.1	Site History
<b>2.0</b>	<b>WELL ABANDONMENT</b>
2.1	Well Destruction Method
2.2	Soil Disposal
<b>3.0</b>	<b>SCHEDULE &amp; REPORTING</b>
<b>4.0</b>	<b>SIGNATURES &amp; CERTIFICATIONS</b>

## LIST OF FIGURES

<b>Vicinity Map</b>	<b>1</b>
<b>Site Map</b>	<b>2</b>

## APPENDICES

<b>Summary Tables</b>	<b>A</b>
Table 1: Summary of Well Construction	
Table 2: Summary of Groundwater Analytical Data	
Table 3: Summary of Well Destruction	
<b>Regulatory Correspondence</b>	<b>B</b>
<b>Monitoring Well Abandonment Permits</b>	<b>C</b>
<b>Photos</b>	<b>D</b>

# *Geological Technics Inc.*

---

1172 Kansas Avenue  
Modesto, California 95351  
(209) 522-4119/Fax (209) 522-4227  
[www.gtienv.com](http://www.gtienv.com)

## **Report**

### **Well Abandonment & Site Closure Activities**

**Springtown Gas  
909 Bluebell Drive  
Livermore, California**

Project No. 1409.2  
July 12, 2012

#### **1.0 INTRODUCTION**

##### **1.1 Site History**

The Springtown Gas Site is situated in a mixed commercial-residential land-use area of Livermore, California, located at the southeast corner of the intersection of Springtown Boulevard and Blue Bell Drive, approximately 300 feet north of westbound Interstate 580 (Figure 1). The Site occupies approximately 0.74 acres, and is currently an operating service station with mini-mart retailing Chevron-branded gasoline and diesel fuel products. The site contains one UST cluster in the east portion of the Site consisting of one 12,000 gallon capacity unleaded gasoline UST, and a 12,000 gallon capacity segmented UST storing 6,000 gallons of diesel and 6,000 gallons of premium unleaded. A single story mini-mart is located on the southern portion of the Site, and six canopied fuel dispensers are located in the north portion of the Site.

Gasoline range petroleum hydrocarbons associated with underground storage tanks (UST), underground waste oil tank systems, and piping/dispenser network have been documented in soil and groundwater at the above Site (see Figures 1 and 2 for vicinity and site maps). The Site, former Springtown Arco Service Station was found to be a potential contribution to soil and groundwater contamination in an August 1988 inspection by Alameda County Department of Environmental Health, Hazardous Materials Division. During the course of inspection, the Division noted the presence of three 10,000 gallon underground storage tanks and one 1000

gallon underground waste oil tank. Springtown Arco Service Station was a part of Springtown Towing Business that was converted to a gasoline/retail minimart in 1988.

ACHCSA in their correspondence dated March 27, 1990 directed the removal of the underground waste oil tank and the cleanup of any soil or groundwater contamination that may have resulted from the tank system.

The work performed to date at the Site is summarized below (For more detail See "*Site Conceptual Model*" prepared by GTI dated December 5, 2008):

- Removal of one underground waste oil tank at the Site on February 7, 1992 by Alpha Geo Services Inc. Soil sampling from underneath the tank (6 feet deep) and soil analysis report by Soil Tech Engineering on the same day. Soil sample collected beneath the tank area at six feet deep showed elevated levels of total oil and grease (5,000 ppm), TPH-D (89 ppm) and lead (140 ppm). Because of the degree of contamination found at the Site which exceeded regulatory threshold levels, further environmental assessment was directed by ACHCSA in their correspondence dated December 2, 1993.
- Removal of three 10,000 gallon underground storage tanks on December, 13, 1993 and installation of three new gasoline USTs in a separate pit on the east side of the Site (present underground storage tanks) was performed. After the removal of the fuel UST's a sheen was noted on the groundwater in the excavation. Soil samples were collected from sidewalls at the end of each UST (S1-S6). These samples contained up to 43 ppm TPH-G, 0.29, 0.33, 0.35, and 1.1 ppm BTEX respectively. Since product sheen was noted on groundwater, 1000 gallons of grossly contaminated water was removed from the pit and recycled at waste oil recovery. Another 20,000 gallons was later pumped from the fuel pit and stored in a holding tank. On December 16, 1993, the fuel tank pit was over excavated laterally and a couple of feet of soil in the side walls was removed. The depth of the excavation was extended from 11 feet to 14 feet below ground surface. Soil samples were collected from the north, south and west walls. The analytical results identified elevated hydrocarbons in the north and east walls. These two walls were over excavated and re-sampled on December 30, 1993. Analytical results indicated that the north wall still contained up to 7,200 ppm TPH-G and 5.8, 88, 46 and 550 ppm BTEX, respectively. A groundwater sample was also collected from the pit. Up to 33,000 µg/l TPH-G, and 160, 200, 220, and 1,200 µg/l BTEX, respectively were detected in the groundwater sample. A total of 1,500 cubic yards of hydrocarbon impacted soil was removed from the waste oil and fuel UST pits. The soil was heat-treated onsite by National Vapor Industries. The treated soil was sampled in March 1995. Approximately 20 cy still contained elevated hydrocarbons and was disposed at Vasco Road landfill, in Livermore. The remaining treated soil was deemed clean and was reused to backfill the former UST's pit.
- Three monitoring wells were installed at the Site (MW-1, MW-2 and MW-3) on July 5, 1996. Soil samples were collected at 10 feet bgs from each boring. Soil from boring MW-1, located immediately north of the fuel UST pit, didn't contain

petroleum hydrocarbons. Apparently the residual soil contamination along the north wall of the former tank excavation is limited in extent. Groundwater samples were collected from the three monitoring wells in July 1996 and April 1999. A maximum of 180 µg/l TPH-G, 130 µg/l MTBE, and 17, ND, 0.31, and 3.6 µg/l BTEX, respectively were identified. Apparently the gasoline release from the former UST's didn't significantly affect groundwater quality beneath the Site.

- On August 30, 2000 the Alameda County Health Care Services Agency issued a "Remedial Action Completion Certification" for the Site and site closure was recommended because: the leak and ongoing sources were removed, the Site was characterized adequately, the dissolved hydrocarbon plume appeared to not be migrating, no preferential pathways were recognized at the Site, no water wells or surface water was likely to be impacted by the contamination at the Site and the Site was thought not to present any significant risk to human health or environment. They mentioned in their correspondence that there is still 7000 ppm of TPH-G and 5.8 ppm of benzene in soil underneath the Site.
- Demolition of the former minimart building and construction of the existing minimart structure, undertaking a UST top upgrade to the three existing USTs on the Site, and removal and replacement of product delivery piping and product dispensers was conducted during the first and second quarters of 2005.
- On June 29, 2005, soil and groundwater samples were collected from the product dispenser and delivery piping removal areas (H<sub>2</sub>OGEOL 2005) directed by the Livermore-Pleasanton Fire Department. Elevated concentrations of TPHd and TPHg were detected only in soil and groundwater samples collected at product dispenser 1-2. The impacted soil was removed by over excavation. Elevated concentrations of MtBE and TBA were detected in soil samples collected at approximately 0.5 feet bgs from product dispenser 1-2, product dispenser 5-6, product dispenser 7-8, and the product delivery piping removal areas, with the highest concentrations detected in proximity to the UST cluster. The groundwater sample also contained elevated concentrations of MtBE and TBA.
- An Underground Storage Tank Unauthorized Release Report for the Site was issued by the Livermore Pleasanton Fire Department on June 29, 2005. The Site was transferred to the ACHCS on August 10, 2005.
- Advancement of 9 soil borings (SB-1 to SB-9) around the UST cluster and the product dispenser area (ESTC, March 2007) were performed. Soil and groundwater samples were collected from the soil borings. TPH-G, TPH-D and BTEX were not detected in soil samples, but elevated levels of MTBE and TBA were detected between 5 and 15 feet of depth. Elevated levels of TPH-G and MTBE were detected in groundwater samples.
- In March 2007, a 2000-foot receptor well survey was conducted (ESTC, March 2007). One domestic well and one supply well were located within 2,000 feet of the Site.
- In June 2007, two Cone Penetrometer Test (CPT) borings were advanced hydraulically (CPT-1 and CPT-2) at the north side of the UST cluster and the

southwest corner of the product dispenser area, to characterize the soil lithology underlying the Site, and collect grab groundwater samples from water-bearing zones to evaluate vertical extent of groundwater impact (ESTC July 2007).

- In August 2007, seven soil borings were advanced by direct-push methods (GP-1 thru GP-7), three of which were converted to 2-inch diameter groundwater monitoring wells (GP-5/STMW-1, GP-6/STMW-2, and GP-7/STMW-3).
- The groundwater monitoring wells were monitored for groundwater level/field parameters and samples were collected for hydrocarbon analyses in September 2007, December 2007 and September 2008.
- In May 2008, four borings were advanced by direct-push methods on a commercial parcel on the north side of Bluebell Drive directly north of the Site (GP-7 thru GP-10), and one boring (GP-6) advanced on a commercial parcel adjoining the Site to the east (ESTC, July 2008).
- On June 6, 2008, a soil vapor pilot test (SVPT) was conducted on the Site using two vapor extraction wells (VE-1 and VE-2) and the existing monitoring wells on the Site as vacuum monitoring wells (STMW-1, STMW-2 and STMW-3). 1998 - Soil gas survey.
- An injection well (P1) was installed at the Site for the hydrogen peroxide injection pilot test on September 19, 2008 by GTI.
- A hydrogen peroxide injection pilot test was conducted at the Site between September 29 and November 6, 2008. The pilot test included hydrogen peroxide injection at STMW-1, STMW-3 and P1. DO, ORP, EC and pH parameters measurements were recorded during the pilot test.
- GTI prepared and submitted the Site Conceptual Model and Hydrogen Peroxide Injection Pilot Test Reports on December 5, 2008. Alameda County Health Care Services Agency (ACHCSA) in response to these two reports in their correspondence dated December 24, 2008 requested GTI to prepare a Corrective Action Plan (CAP) and explain the necessity of Geoprobe investigation and expansion of groundwater monitoring well network along with hydrogen peroxide injection at the site
- In response to ACHCSA's request and questions in their correspondence dated December 24, 2008, GTI proposed via e-mail on January 26, 2009 to prepare a work plan under "*Additional Site Characterization and Interim Remedial Action*". The proposal to prepare such a work plan prior to preparation of a Draft Corrective Action Plan was approved by ACHCSA in their correspondence via e-mail on January 27, 2009.
- In correspondence dated March 13<sup>th</sup>, 2009, Alameda County Environmental Health Department (ACEH) directed GTI to conduct interim hydrogen peroxide injections on a weekly basis for no longer than 4 weeks. On April 14<sup>th</sup>, 2010, GTI request included the newly installed monitoring wells into the injection group. Per two email requests dated April 21<sup>st</sup>, 2010 and May 17<sup>th</sup>, 2010, ACEH extended the interim hydrogen peroxide injection events to a total of 16 events. The interim hydrogen peroxide injection pilot test consisted of a total of 16 injection events conducted from March 30<sup>th</sup>, 2010 through July 21<sup>st</sup>, 2010. A total of approximately 2,385 gallons of diluted



hydrogen peroxide solution was injected during the interim hydrogen peroxide injection series.

- A historical summary of the hydrogen peroxide injections pilot test activities can be referred to in both the *Additional Site Characterization and Interim Remedial Action Report* prepared by GTI, dated July 30<sup>th</sup>, 2010 and in the 2<sup>nd</sup> and 3<sup>rd</sup> Quarter 2010 *Groundwater Monitoring and Interim Remedial Effectiveness* report dated October 18<sup>th</sup>, 2010.
- The additional hydrogen peroxide injection pilot study, approved by Alameda County Environmental Health Services (ACEH) on November 15, 2010, consisted of a total of 12 injection events conducted from December 14<sup>th</sup>, 2010 through March 10<sup>th</sup>, 2011. A total of approximately 2,393 gallons of hydrogen peroxide solution was injected during the interim hydrogen peroxide injection series. Following the end of the additional hydrogen peroxide injection pilot study and the submittal of the 1<sup>st</sup> *Semi-Annual Groundwater Monitoring and Interim Remedial Action Status Report* dated March 28<sup>th</sup>, 2011, an ACEH letter dated May 5<sup>th</sup>, 2011 requested that verification groundwater monitoring be performed in the 3<sup>rd</sup> Quarter 2012 and based on the results, consider the site for low-risk closure.
- Following the 2<sup>nd</sup> *Semi-Annual Groundwater Monitoring and Interim Remedial Action Status Report* dated October 4<sup>th</sup>, 2012, an ACEH letter dated November 15, 2011 suspended groundwater monitoring at the site and outlined the steps to case closure.
- In their correspondence dated April 12<sup>th</sup>, 2012 the ACEH granted the site No Further Action Required (NFAR) status and requested that the groundwater monitoring wells be decommissioned and provide a report documenting the site closure work prior to granting the site a remedial action completion certification.

The following report discusses the activities associated with the well abandonment and site closure activities at the Springtown Gas Site. Regulatory correspondences associated with site closure are included in Appendix B.

## 2.0 WELL ABANDONMENT

Prior to well abandonment, per the November 15, 2011 Alameda County Health Care Services Agency directive, public notification documents were sent out to the address list as provided by ACHCSA. Refer to Appendix E for detail information.

There were nine (9) monitoring wells and two (2) vapor extraction wells at the Site. GTI and V&W Drilling personnel decommissioned these wells under permit from Zone 7 Water Agency and in accordance with the California Well Standards Section 19. The monitoring wells and vapor extraction wells associated with the Site were in good condition as no obstacles were observed in any of the wells prior to abandonment.

V&W Drilling (C57 License #720904), a competent well driller selected through a bidding process, was employed to decommission the Sites 11 wells. Permits were issued from the Zone 7 Water Agency (Permit # 2012055) on June 4, 2012. The local regulatory agency was notified 48 hours prior to commencing work. The well abandonment permits are included as Appendix C.

The following well destruction work was performed on June 13, 2012.

## **2.1 Well Destruction Method**

The following method was used to decommission the wells:

- V&W Drilling personnel removed the well box and supporting concrete apron.
- A cement-bentonite mixture of grout was used to pressure grout seal the wells.
- The grout was pumped into the bottom of the well via a tremie pipe.
- To help push the grout into the formation, approximately 25 psi of pressure was applied to each well for approximately 5 minutes.
- The well tops were over drilled to a depth of 2 feet below grade using 8-inch and 10-inch hollow stem augers guided down the center of the well casing via a guide rod attachment on the drill bit.
  - Vapor extraction well VE-2 was not over drilled and the upper 2 feet was removed by hand due to its close proximity to the UST vapor recovery system.
  - Monitoring well MW-4 was not over drilled and the upper 2 feet was removed by hand due to site restrictions.
- The drilled out portion of the wells were then backfilled with either potting soil or cement, depending on the wells location

Slightly more grout was required than the original estimate of 461 gallons. Approximately 485 gallons of grout was used to abandon the wells associated with the Site. Grout volumes are summarized in Table 3 of Appendix A.

## **2.2 Soil Disposal**

All of the excavated soil cuttings was used as backfill, so no soil disposal is needed.

## **3.0 SCHEDULE & REPORTING**

The information gathered during this phase of work is presented in this report in efforts of the Site receiving regulatory agency closure. Dr. Ray Kablanow, a registered professional geologist, supervised the project. Copies of the report will be forwarded to both the appropriate County and State regulatory agencies (SCDER and CRWQCB).

#### 4.0 SIGNATURE & CERTIFICATION

Geological Technics Inc. performed this project in accordance with accepted geologic and hydrologic standards of the State of California accepted and in effect at the time of this investigation. Geological Technics Inc. is not responsible for undisclosed conditions.

This report was prepared by:



Andrew Dorn, B.S. Geology

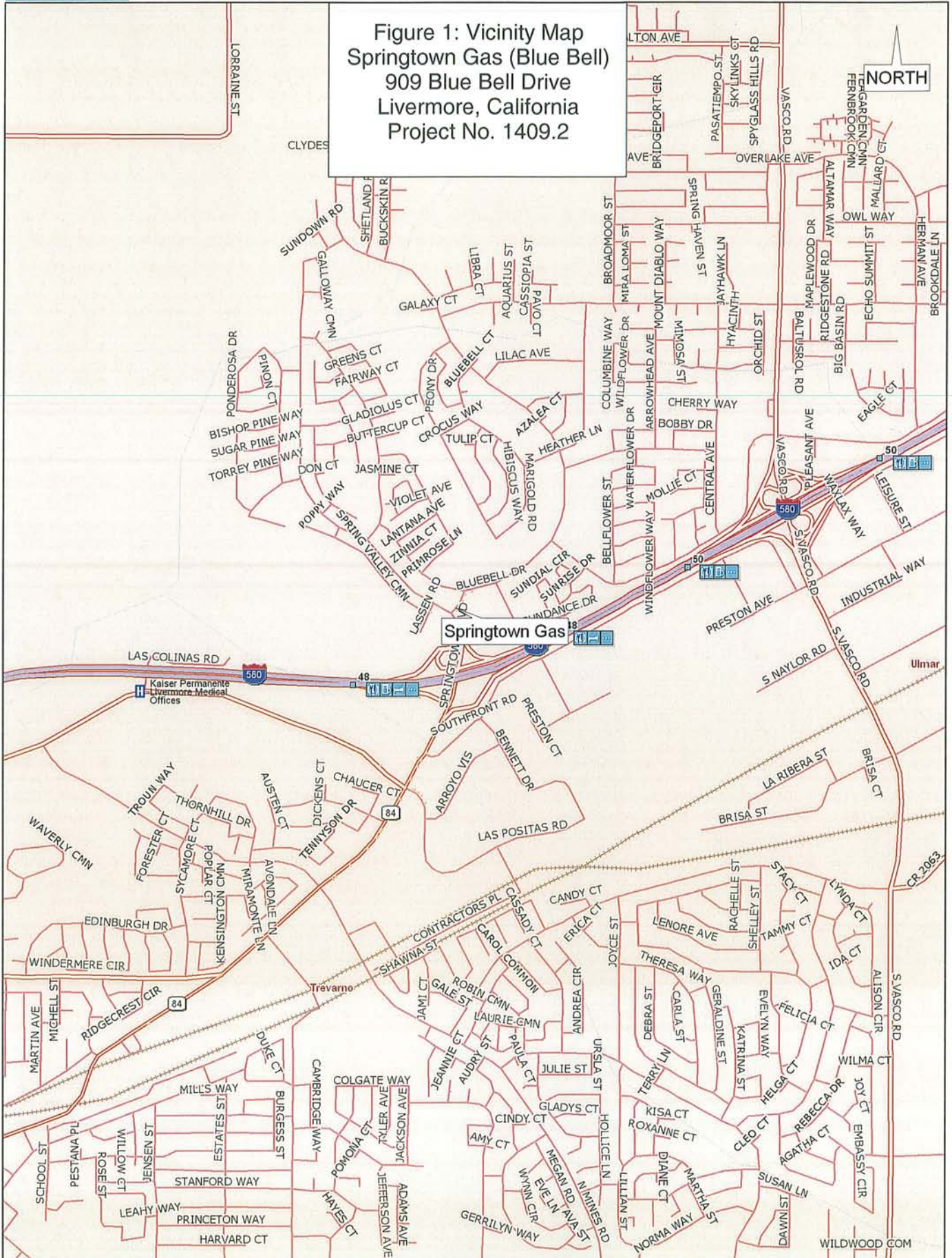
This report was prepared under the direction of:



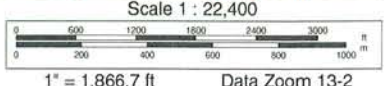
Raynold Kablanow II, Ph.D.  
California Professional Geologist #5234  
Certified Hydrogeologist #442

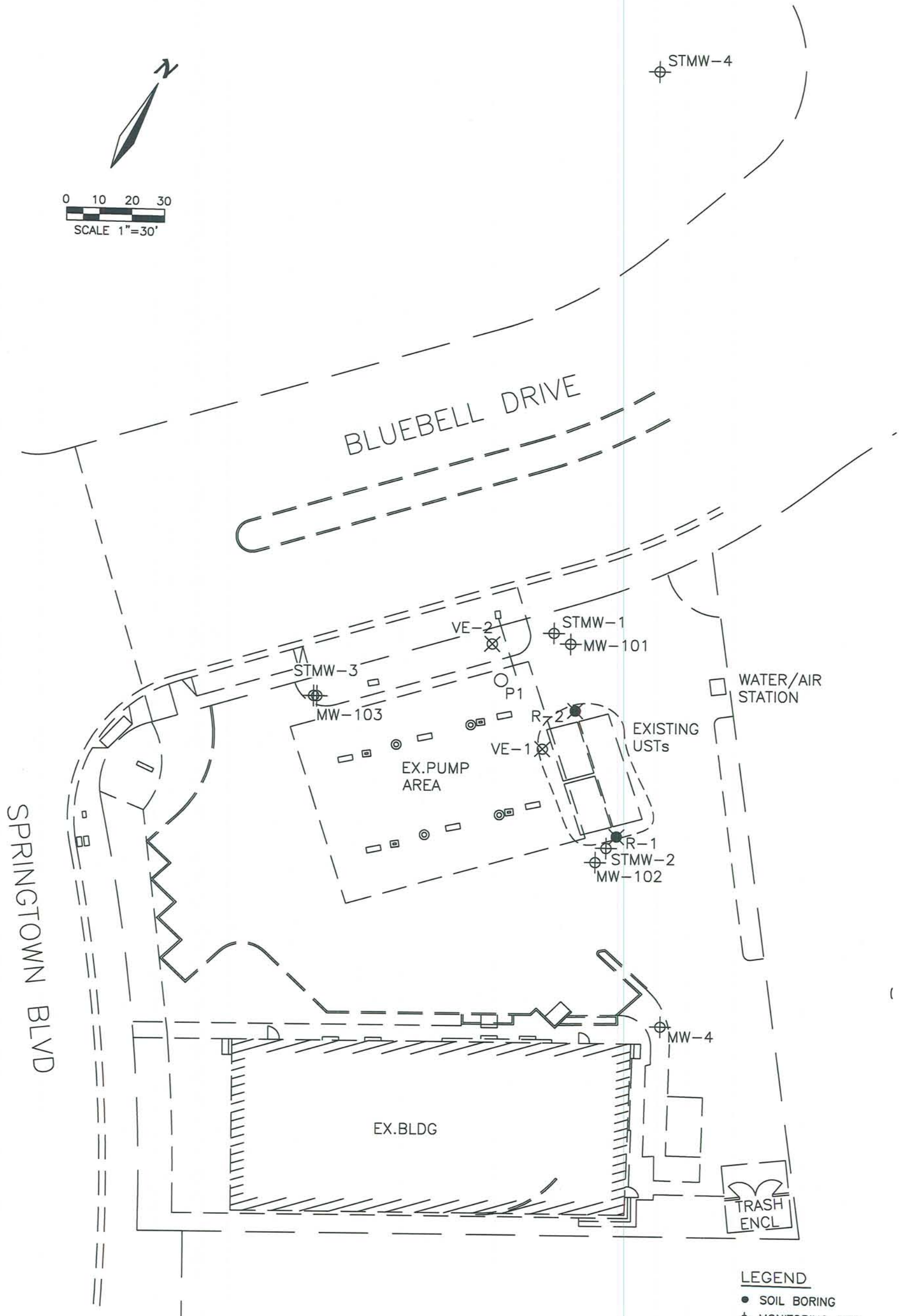


Figure 1: Vicinity Map  
Springtown Gas (Blue Bell)  
909 Blue Bell Drive  
Livermore, California  
Project No. 1409.2



Data use subject to license.  
© 2006 DeLorme. Street Atlas USA® 2007.  
www.delorme.com





**LEGEND**

- SOIL BORING
- ⊕ MONITORING WELL
- ⊗ UST MONITORING WELL
- ⊗ EXTRACTION WELL
- ⊗ CPT BORING
- PROPOSED PILOT TEST INJECTION WELL

By:	AD
Job No:	1409.2
Date:	7/6/12
Scale:	1"=30'
File:	14092 site map

**Geological Technics, Inc.**



1101 7th Street  
Modesto, CA  
95354  
209.522.4119 (tel)  
209.522.4227 (fax)

**FIGURE 2: SITE MAP**

SPRINGTOWN GAS (BLUEBELL)  
909 BLUEBELL DRIVE  
LIVERMORE, CA

## **Appendix A**

### **Summary Data Tables**

---

**Table 1  
Summary of Monitoring Well Completion Data**

Springtown Gas  
909 Bluebell Drive  
Livermore, California

Well Number	Status	Date Drilled	Total Depth (ft)	Boring Diameter (in)	Well Casing Diameter (in)	Casing Type	Slot Size (in)	Sand Type	Well Screen		Filter Pack		Annular Seal		Grout Seal	
									From	To	From	To	From	To	From	To
STMW-1	Active	8/23/2007	20	10	2	PVC	0.02	#2/12	10	20	20	8	8	7	7	0
STMW-2	Active	8/23/2007	20	10	2	PVC	0.02	#2/12	10	20	20	8	8	7	7	0
STMW-3	Active	8/23/2007	20	10	2	PVC	0.02	#2/12	10	20	20	8	8	7	7	0
P1	Active	9/19/2008	20	10	4	PVC	0.02	#3/12	10	20	20	8	8	7	7	0
MW-4	Active	2/25/2010	20	8	2	PVC	0.02	#3/12	10	20	20	8	8	5	5	0
MW-101	Active	2/25/2010	37	8	2	PVC	0.02	#3/12	32	37	37	30	30	28	28	0
MW-102	Active	2/25/2010	40	8	2	PVC	0.02	#3/12	32	40	40	30	30	27	27	0
MW-103	Active	2/26/2010	35	8	2	PVC	0.02	#3/12	30	35	35	28	28	25	25	0

**Table 2  
Summary of Groundwater Analytical Data**

Springtown Gas  
909 Bluebell Drive  
Livermore, California

MONITORING WELL	Date	TPHg	B	T	E	X	MtBE	TBA	DIPE	EtBE	TAME	1,2-DCA	EDB	Methanol	Ethanol
		ug/l	ug/l	ug/l	ug/l	ug/l	ug/l	ug/l	ug/l	ug/l	ug/l	ug/l	ug/l	ug/l	ug/l
STMW-1	9/4/2007	220	<10	<10	<10	<10	850	6,500	-	-	-	-	-	-	-
	12/10/2007	210	<5	<5	<5	<5	540	4,200	-	-	-	-	-	-	-
	9/25/2008	230	<0.5	<0.5	<0.5	<1.0	204	704	<0.5	<0.5	0.6	<0.5	<0.5	<5	<20
	11/20/2008	<50	<0.5	<0.5	<0.5	<1.0	14	930	<0.5	<0.5	<0.5	-	-	-	-
	12/29/2008	<50	<0.5	<0.5	<0.5	<1.0	15	1,000	<0.5	<0.5	<0.5	<0.5	<0.5	<50	<5
	3/10/2009	<50	<0.5	<0.5	<0.5	<1.0	29	3,000	<0.5	<0.5	<0.5	<0.5	<0.5	<50	<5
	6/10/2009	<50	<0.5	<0.5	<0.5	<1.0	60	3,800	<0.5	<0.5	<0.5	<0.5	<0.5	<50	<5
	9/8/2009	<50	<0.5	<0.5	<0.5	<1.0	52	190	<0.5	<0.5	<0.5	<0.5	<0.5	<50	<5
	2/10/2010	<50	<0.5	<0.5	<0.5	<1.0	44	610	<0.5	<0.5	<0.5	<0.5	<0.5	<50	<5
	6/25/2010								Not sampled						
	8/24/2010	<50	<0.5	<0.5	<0.5	<1.0	5.9	87	<0.5	<0.5	<0.5	<0.5	<0.5	<50	<5
	11/30/2010								Not sampled						
	2/17/2011	<50	<0.5	<0.5	<0.5	<1.0	4.2	<5	<0.5	<0.5	<0.5	<0.5	<0.5	<50	<5
8/19/2011	<50	<0.5	<0.5	<0.5	<1.0	1.3	290	<0.5	<0.5	<0.5	<0.5	<0.5	<50	<5	
STMW-2	9/4/2007	<50	<0.5	<0.5	<0.5	<0.5	<1	42	-	-	-	-	-	-	-
	12/10/2007	<50	<0.5	<0.5	<0.5	<0.5	<1	83	-	-	-	-	-	-	-
	9/25/2008	<50	<0.5	<0.5	<0.5	<1	<0.5	71	<0.5	<0.5	<0.5	<0.5	<0.5	<5	<20
	11/20/2008	90	1.7	6.9	1.7	7.6	2.2	190	<0.5	<0.5	<0.5	-	-	-	-
	12/29/2008	<50	<0.5	<0.5	<0.5	<1.0	<0.5	56	<0.5	<0.5	<0.5	<0.5	<0.5	<50	<5
	3/10/2009	<50	<0.5	<0.5	<0.5	<1.0	1.5	96	<0.5	<0.5	<0.5	<0.5	<0.5	<50	<5
	6/10/2009	<50	<0.5	<0.5	<0.5	<1.0	1.1	43	<0.5	<0.5	<0.5	<0.5	<0.5	<50	<5
	9/8/2009	<50	<0.5	<0.5	<0.5	<1.0	<0.5	45	<0.5	<0.5	<0.5	<0.5	<0.5	<50	<5
	2/10/2010	<50	<0.5	<0.5	<0.5	<1.0	<0.5	110	<0.5	<0.5	<0.5	<0.5	<0.5	<50	<5
	6/25/2010								Not sampled						
	8/24/2010	<50	<0.5	<0.5	<0.5	<1.0	<0.5	33	<0.5	<0.5	<0.5	<0.5	<0.5	<50	<5
	11/30/2010								Not sampled						
	2/17/2011	<50	<0.5	<0.5	<0.5	<1.0	<50	<5	<0.5	<0.5	<0.5	<0.5	<0.5	<50	<5
8/19/2011	<50	<0.5	<0.5	<0.5	<1.0	<0.5	<10	<0.5	<0.5	<0.5	<0.5	<0.5	<50	<5	
STMW-3	9/4/2007	59	<1	<1	<1	<1	160	120	-	-	-	-	-	-	-
	12/10/2007	<50	<0.5	<0.5	<0.5	<0.5	17	86	-	-	-	-	-	-	-
	9/25/2008	<50	<0.5	<0.5	<0.5	<0.5	67	31.7	<0.5	<0.5	<0.5	<0.5	<0.5	<5	<20
	11/20/2008	<50	<0.5	<0.5	<0.5	<1.0	12	<5	<0.5	<0.5	<0.5	-	-	-	-
	12/29/2008	<50	<0.5	<0.5	<0.5	<1.0	2.2	<5	<0.5	<0.5	<0.5	<0.5	<0.5	<50	<5
	3/10/2009	<50	<0.5	<0.5	<0.5	<1.0	3	95	<0.5	<0.5	<0.5	<0.5	<0.5	<50	<5
	6/10/2009	<50	<0.5	<0.5	<0.5	<1.0	8.3	45	<0.5	<0.5	<0.5	<0.5	<0.5	<50	<5
	9/8/2009	<50	<0.5	<0.5	<0.5	<1.0	11	29	<0.5	<0.5	<0.5	<0.5	<0.5	<50	<5
	2/10/2010	<50	<0.5	<0.5	<0.5	<1.0	32	28	<0.5	<0.5	<0.5	<0.5	<0.5	<50	<5
	6/25/2010								Not sampled						
	8/24/2010	<50	<0.5	<0.5	<0.5	<1.0	ND<0.5	ND<5	<0.5	<0.5	<0.5	<0.5	<0.5	<50	<5
	11/30/2010								Not sampled						
	2/17/2011	<50	<0.5	<0.5	<0.5	<1.0	<50	<5	<0.5	<0.5	<0.5	<0.5	<0.5	<50	<5
8/19/2011	<50	<0.5	<0.5	<0.5	<1.0	<0.5	<10	<0.5	<0.5	<0.5	<0.5	<0.5	<50	<5	
P1	11/20/2008	<50	<5	<5	<5	<10	180	2,300	<5	<5	<5	-	-	-	-
	12/29/2008	<50	<0.5	<0.5	<0.5	<1.0	120	3,900	<0.5	<0.5	<0.5	<0.5	<0.5	<50	<5
	3/10/2009	<50	<0.5	<0.5	<0.5	<1.0	240	9,300	<0.5	<0.5	<0.5	<0.5	<0.5	<50	<5
	6/10/2009	<50	<0.5	<0.5	<0.5	<1.0	250	6,300	<0.5	<0.5	<0.5	<0.5	<0.5	<50	<5
	9/8/2009	<250	<2.5	<2.5	<2.5	<5	180	2,900	<2.5	<2.5	<2.5	<2.5	<2.5	<250	<25
	2/10/2010	<250	<2.5	<2.5	<2.5	<5	110	5,200	<2.5	<2.5	<2.5	<2.5	<2.5	<250	<25
	6/25/2010								Not sampled						
	8/24/2010	<50	<0.5	<0.5	<0.5	<1.0	5.4	120	<0.5	<0.5	<0.5	<0.5	<0.5	<50	<5
11/30/2010								Not sampled							
2/17/2011	<50	<0.5	<0.5	<0.5	<1.0	1.9	ND<5	<0.5	<0.5	<0.5	<0.5	<0.5	<50	<5	
8/19/2011	10	<0.5	<0.5	<0.5	<1.0	14	ND<10	<0.5	<0.5	<0.5	<0.5	<0.5	<50	<5	
MW-4	6/25/2010	<50	<0.5	<0.5	<0.5	<1.0	<0.5	<5	<0.5	<0.5	<0.5	<0.5	<0.5	<50	<5
	8/24/2010	<50	<0.5	<0.5	<0.5	<1.0	<0.5	<5	<0.5	<0.5	<0.5	<0.5	<0.5	<50	<5
	11/30/2010	<50	<0.5	<0.5	<0.5	<1.0	<0.5	<5	<0.5	<0.5	<0.5	<0.5	<0.5	<50	<5
	2/17/2011	<50	<0.5	<0.5	<0.5	<1.0	<0.5	<5	<0.5	<0.5	<0.5	<0.5	<0.5	<50	<5
	8/19/2011								Not sampled						
MW-101	6/25/2010	<50	<0.5	<0.5	<0.5	<1.0	<0.5	<5	<0.5	<0.5	<0.5	<0.5	<0.5	<50	<5
	8/24/2010	<50	<0.5	<0.5	<0.5	<1.0	<0.5	<5	<0.5	<0.5	<0.5	<0.5	<0.5	<50	<5
	11/30/2010	<50	<0.5	<0.5	<0.5	<1.0	<0.5	<5	<0.5	<0.5	<0.5	<0.5	<0.5	<50	<5
	2/17/2011	<50	<0.5	<0.5	<0.5	<1.0	<0.5	<5	<0.5	<0.5	<0.5	<0.5	<0.5	<50	<5
	8/19/2011								Not sampled						
MW-102	6/25/2010	<50	<0.5	<0.5	<0.5	<1.0	<0.5	<5	<0.5	<0.5	<0.5	<0.5	<0.5	<50	<5
	8/24/2010	<50	<0.5	<0.5	<0.5	<1.0	<0.5	<5	<0.5	<0.5	<0.5	<0.5	<0.5	<50	<5
	11/30/2010	<50	<0.5	<0.5	<0.5	<1.0	<0.5	<5	<0.5	<0.5	<0.5	<0.5	<0.5	<50	<5
	2/17/2011	<50	<0.5	<0.5	<0.5	<1.0	<0.5	<5	<0.5	<0.5	<0.5	<0.5	<0.5	<50	<5
	8/19/2011								Not sampled						
MW-103	6/25/2010	<50	<0.5	<0.5	<0.5	<1.0	<0.5	<5	<0.5	<0.5	<0.5	<0.5	<0.5	<50	<5
	8/24/2010	<50	<0.5	<0.5	<0.5	<1.0	<0.5	<5	<0.5	<0.5	<0.5	<0.5	<0.5	<50	<5
	11/30/2010	<50	<0.5	<0.5	<0.5	<1.0	<0.5	<5	<0.5	<0.5	<0.5	<0.5	<0.5	<50	<5
	2/17/2011	<50	<0.5	<0.5	<0.5	<1.0	<0.5	<5	<0.5	<0.5	<0.5	<0.5	<0.5	<50	<5
	8/19/2011								Not Sampled						

Notes:

- TPHg Total petroleum hydrocarbons as gasoline
- TPHd Total petroleum hydrocarbon
- B Benzene
- T Toluene
- E Ethylbenzene
- X Total xylenes
- MtBE Methyl tertiary butyl ether
- TBA Tert-butyl alcohol
- DIPE Di-isopropyl ether
- EtBE Ethyl-tertiary butyl ether
- TAME Tert-amyl-methyl ether
- 1,2-DCA 1,2-Dichloroethane
- EDB 1,2-Dibromoethane
- bgs below ground surface
- ug/l micrograms per liter
- Not analyzed or not reported



**Table 3  
Summary of Well Destruction Details**

Springtown Gas  
909 Bluebell Drive  
Livermore, California

Well Details							Pressure Grout								Well Details								
Well/Boring Number	Total Depth (ft)	Measured Total Depth (ft)	Boring Diameter (in)	Well Casing Diameter (in)	Casing Type	Casing Area (ft2)	Casing Volume (ft3)	Casing Volume (gal)	Boring Area (ft2)	Filter Pack Length (ft)	Filter Pack Volume (ft3)	Filter Pack Volume (gal)	TOTAL VOLUME Casing + Filter Pack (gal)	TOTAL VOLUME USED (gal)	Well Screen		Filter Pack		Annular Seal		Grout Seal		
															From	To	From	To	From	To	From	To	
STMW-1	20	19.73	10	2	PVC	0.0220	0.440	3.3	0.545	12.0	6.54	48.9	52.2	65	10	20	20	8	8	7	7	0	
STMW-2	20	19.67	10	2	PVC	0.0220	0.440	3.3	0.545	12.0	6.54	48.9	52.2	60	10	20	20	8	8	7	7	0	
STMW-3	20	19.55	10	2	PVC	0.0220	0.440	3.3	0.545	12.0	6.54	48.9	52.2	40	10	20	20	8	8	7	7	0	
P1	20	19.41	10	4	PVC	0.0873	1.746	13.1	0.545	12.0	6.54	48.9	62.0	60	10	20	20	8	8	7	7	0	
MW-4	20	20.30	8	2	PVC	0.0220	0.440	3.3	0.350	12.0	4.2	31.4	34.7	25	10	20	20	8	8	5	5	0	
MW-101	37	36.20	8	2	PVC	0.0220	0.814	6.1	0.350	7.0	2.45	18.3	24.4	45	32	37	37	30	30	28	28	0	
MW-102	40	39.18	8	2	PVC	0.0220	0.880	6.6	0.350	10.0	3.5	26.2	32.8	50	32	40	40	30	30	27	27	0	
MW-103	35	34.35	8	2	PVC	0.0220	0.770	5.8	0.350	7.0	2.45	18.3	24.1	25	30	35	35	28	28	25	25	0	
VE-1	10	8.60	10	4	PVC	0.0873	0.873	6.5	0.545	7.5	4.0875	30.6	37.1	45	3	10	10	2.5	2.5	1	1	0	
VE-2	10	8.35	10	4	PVC	0.0873	0.873	6.5	0.545	7.5	4.0875	30.6	37.1	35	3	10	10	2.5	2.5	1	1	0	
STMW-4	20	27.00	10	2	PVC	0.0220	0.440	3.3	0.545	12.0	6.54	48.9	52.2	35	?	?	?	?	?	?	?	?	
TOTALS								Casing Volume (gal)					Filter Pack Volume (gal)	TOTAL VOLUME Casing + Filter Pack + Over Drill (gal)	TOTAL VOLUME USED (gal)								
								61.0					400.0	461.0	485								

## **Appendix B**

---

### **Regulatory Correspondence**



ENVIRONMENTAL HEALTH SERVICES  
ENVIRONMENTAL PROTECTION  
1131 Harbor Bay Parkway, Suite 250  
Alameda, CA 94502-6577  
(510) 567-6700  
FAX (510) 337-9335

May 5, 2011

Aminifilibadi Masood and Amini Sharbano  
Springtown Gas  
909 Bluebell Drive  
Livermore, CA 94551-1419

Subject: Review of Groundwater Monitoring and Interim Remedial Action Status Report for Fuel Leak Case No. RO0002894 and GeoTracker Global ID T06019716197, Springtown Gas, 909 Bluebell Drive, Livermore, CA 94551

Dear Aminifilibadi Masood and Amini Sharbano:

Alameda County Environmental Health (ACEH) staff has reviewed the case file for the above-referenced fuel leak case, including the recently submitted report entitled, "*Groundwater Monitoring and Interim Remedial Action Status Report, (1st Quarters 2011), Springtown Gas, 909 Bluebell Drive, Livermore, California,*" dated March 28, 2011 (Report). The Report, which was prepared on your behalf by Geological Technics, Inc., presents results from groundwater sampling conducted on February 17, 2011. The Report also makes recommendations that the site be considered for low-risk closure and presents a proposed monitoring plan. Significant reductions in the concentrations of the fuel oxygenates MTBE and TBA are noted in the groundwater analytical data during and following the chemical oxidation pilot tests.

The additional pilot test was completed in March 2011 following the most recent sampling event on February 17, 2011. We request that you conduct verification monitoring to confirm that chemical concentrations do not rebound in groundwater samples collected from the monitoring wells following the completion of the additional pilot test. The monitoring wells were also used as the injection wells.

We concur with the proposed monitoring plan presented in the March 28, 2011 *Groundwater Monitoring and Interim Remedial Action Status Report*. Following the proposed semiannual groundwater monitoring during the third quarter of 2011, the site may be reviewed for case closure if the groundwater sampling data confirm that rebound has not occurred. Please perform the proposed groundwater monitoring and present the results in the Groundwater Monitoring Report requested below.

#### **TECHNICAL REPORT REQUEST**

Please submit technical reports to Alameda County Environmental Health (Attention: Jerry Wickham), according to the following schedule:

- **October 14, 2011** – Third Quarter 2011 Groundwater Monitoring Report

Aminifilibadi Masood and Amini Sharbano  
RO0002894  
May 5, 2011  
Page 2

If you have any questions, please call me at (510) 567-6791 or send me an electronic mail message at [jerry.wickham@acgov.org](mailto:jerry.wickham@acgov.org).

Sincerely,



Digitally signed by Jerry Wickham  
DN: cn=Jerry Wickham, o=Alameda County  
Environmental Health, ou,  
email=jerry.wickham@acgov.org, c=US  
Date: 2011.05.05 10:57:34 -07'00'

Jerry Wickham, California PG 3766, CEG 1177, and CHG 297  
Senior Hazardous Materials Specialist

---

Attachment: Responsible Party(ies) Legal Requirements/Obligations

Enclosure: ACEH Electronic Report Upload (ftp) Instructions

cc: Danielle Stefani, Livermore Pleasanton Fire Department, 3560 Nevada St, Pleasanton, CA 94566  
(Sent via E-mail to: [dstefani@lpfire.org](mailto:dstefani@lpfire.org))

Cheryl Dizon (QIC 8021), Zone 7 Water Agency, 100 North Canyons Pkwy, Livermore, CA 94551  
(Sent via E-mail to: [cdizon@zone7water.com](mailto:cdizon@zone7water.com))

Tamorah Bryant, Geological Technics, Inc., 1172 Kansas Avenue, Stockton, CA 95351 (Sent via E-mail to: [TamorahB@gtienv.com](mailto:TamorahB@gtienv.com))

Donna Drogos, ACEH (Sent via E-mail to: [donna.drogos@acgov.org](mailto:donna.drogos@acgov.org))  
Jerry Wickham, ACEH (Sent via E-mail to: [jerry.wickham@acgov.org](mailto:jerry.wickham@acgov.org))

GeoTracker, eFile



ENVIRONMENTAL HEALTH SERVICES  
ENVIRONMENTAL PROTECTION  
1131 Harbor Bay Parkway, Suite 250  
Alameda, CA 94502-6577  
(510) 567-6700  
FAX (510) 337-9335

November 15, 2011

Masood Amini Filibadi and Shahrbanoo Amini  
Springtown Gas  
909 Bluebell Drive  
Livermore, CA 94551-1419

Subject: Case Closure Review of Fuel Leak Case No. RO0002894 and GeoTracker Global ID T06019716197, Springtown Gas, 909 Bluebell Drive, Livermore, CA 94551

Dear Masood Amini Filibadi and Shahrbanoo Amini:

Alameda County Environmental Health (ACEH) staff has reviewed the case file for the above-referenced fuel leak case, including the recently submitted report entitled, "*Groundwater Monitoring and Interim Remedial Action Status (2<sup>nd</sup> Semi-Annual Report), Springtown Gas, 909 Bluebell Drive, Livermore, California,*" dated October 4, 2011 (Report). The Report, which was prepared on your behalf by Geological Technics, Inc., presents results from groundwater sampling conducted on August 29, 2011 and recommends that the site be considered for low-risk closure. ACEH will review the case for potential case closure. Pending completion of the case closure review, groundwater monitoring may be suspended at this time.

Pursuant to Section 25297.15 (a), ACEH, the local agency, shall not consider cleanup or site closure proposals from the primary or active responsible party, issue a closure letter, or make a determination that no further action is required with respect to a site upon which there was an unauthorized release of hazardous substances from an underground storage tank subject to this chapter unless all current record owners of fee title to the site of the proposed action have been notified of the proposed action by the primary or active responsible party. ACEH is required to notify the primary or active responsible party of their requirement to certify in writing to the local agency that the notification requirement in the above-mentioned regulation has been satisfied and to provide the local agency with a complete mailing list of all record fee title owners.

To satisfy the above-mentioned requirement, please complete the enclosed "List of Landowners Form," and mail it back to ACEH within thirty (30) days from the date of this letter. Also your comments must be considered prior to the proposed cleanup or closure. Please respond within 30 days from the date of this letter for your comments to be considered.

ACEH will review the case for possible closure under a commercial land use scenario with the following site management requirements:

*"Case closure for the fuel leak site is granted for the current commercial land use only. If a change in land use to any residential or other conservative land use scenario occurs at this site, Alameda County Environmental Health (ACEH) must be notified as required by Government Code Section 65850.2.2. ACEH will re-evaluate the case upon receipt of approved development/construction plans. Excavation or construction activities in the areas of residual contamination require planning and implementation of appropriate health and safety procedures by the responsible party prior to and during excavation and construction activities."*

Public participation is a requirement for the Corrective Action Plan and case closure process. In order to notify potentially affected members of the public of the potential fuel leak case closure, we request that you distribute the attached Notification of Potential Case Closure to the addresses shown on attached mailing list **no later than November 21, 2011**. We also request that you distribute the Notification to any persons, corporations, groups, or government agencies that may have an interest in closure of this fuel leak case. The Notification of Potential Case Closure requests that landowners or residents submit any comments or questions to ACEH regarding potential case closure by December 22, 2011. Following distribution by U.S. Mail to the attached mailing list, please submit written verification of the date that the Notification of Potential Case Closure was distributed. ACEH will consider all comments from the public prior to potential case closure.

### TECHNICAL REPORT REQUEST

Please submit technical reports to Alameda County Environmental Health (Attention: Jerry Wickham), according to the following schedule:

- **November 21, 2011** – Verification that Notification of Potential Case Closure was distributed

If you have any questions, please call me at (510) 567-6791 or send me an electronic mail message at [jerry.wickham@acgov.org](mailto:jerry.wickham@acgov.org). Online case files are available for review at the following website: <http://www.acgov.org/aceh/index.htm>. If your email address does not appear on the cover page of this notification ACEH is requesting you provide your email address so that we can correspond with you quickly and efficiently regarding your case.

Sincerely,



Digitally signed by Jerry Wickham  
DN: cn=Jerry Wickham, o=Environmental Health,  
ou=Alameda County, email=jerry.wickham@acgov.org,  
c=US  
Date: 2011.11.15 15:43:33 -08'00'

Jerry Wickham, California PG 3766, CEG 1177, and CHG 297  
Senior Hazardous Materials Specialist

Attachments: Notification of Potential Case Closure  
Mailing List  
Landowners Form  
Responsible Party(ies) Legal Requirements/Obligations  
Enclosure: ACEH Electronic Report Upload (ftp) Instructions

cc: Danielle Stefani, Livermore Pleasanton Fire Department, 3560 Nevada St, Pleasanton, CA 94566  
(Sent via E-mail to: [dstefani@lpfire.org](mailto:dstefani@lpfire.org))

Colleen Winey (QIC 8021), Zone 7 Water Agency, 100 North Canyons Pkwy, Livermore, CA 94551  
(Sent via E-mail to: [cwiney@zone7water.com](mailto:cwiney@zone7water.com))

Masood Amini Filibadi and Shahrbanu Amini RO0002894  
November 15, 2011  
Page 3

Raynold I. Kablanow II, Geological Technics, Inc., 1172 Kansas Avenue, Stockton, CA 95351 (*Sent via E-mail to: [RayK@gtienv.com](mailto:RayK@gtienv.com)*)

Donna Drogos, ACEH (*Sent via E-mail to: [donna.drogos@acgov.org](mailto:donna.drogos@acgov.org)*)  
Jerry Wickham, ACEH (*Sent via E-mail to: [jerry.wickham@acgov.org](mailto:jerry.wickham@acgov.org)*)

GeoTracker, eFile

---



ENVIRONMENTAL HEALTH SERVICES  
ENVIRONMENTAL PROTECTION  
1131 Harbor Bay Parkway, Suite 250  
Alameda, CA 94502-6577  
(510) 567-6700  
FAX (510) 337-9335

April 12, 2012

Masood Amini Filibadi and Shahrbanu Amini  
Springtown Gas  
909 Bluebell Drive  
Livermore, CA 94551-1419

Subject: Well Decommissioning for Fuel Leak Case No. RO0002894 and GeoTracker Global ID T06019716197, Springtown Gas, 909 Bluebell Drive, Livermore, CA 94551

Dear Masood Amini Filibadi and Shahrbanu Amini:

Alameda County Environmental Health (ACEH) have reviewed the fuel leak case file and case closure summary for the above-referenced site and concur that no further action related to the underground storage tank fuel release is required at this time. Prior to issuance of remedial action completion certification and case closure, we request that the monitoring wells at the site be properly decommissioned, should the monitoring wells have no further use at the site. Please decommission the monitoring wells and provide documentation of the well decommissioning to this office no later than July 30, 2012. Remedial action completion certification will be issued following receipt of the documentation.

Well destruction permits may be obtained from the Zone 7 Water Agency (<http://www.zone7water.com>). If you have any questions, please call me at (510) 567-6791 or send me an electronic mail message at [jerry.wickham@acgov.org](mailto:jerry.wickham@acgov.org).

#### **TECHNICAL REPORT REQUEST**

Please submit technical reports to Alameda County Environmental Health (Attention: Jerry Wickham), according to the following schedule:

- **July 30, 2012** – Well Decommissioning Report

If you have any questions, please call me at (510) 567-6791 or send me an electronic mail message at [jerry.wickham@acgov.org](mailto:jerry.wickham@acgov.org). Online case files are available for review at the following website: <http://www.acgov.org/aceh/index.htm>. If your email address does not appear on the cover page of this notification ACEH is requesting you provide your email address so that we can correspond with you quickly and efficiently regarding your case.

Sincerely,

A handwritten signature in blue ink that reads "Jerry Wickham". The signature is written in a cursive style.

Digitally signed by Jerry Wickham  
DN: cn=Jerry Wickham, o=Environmental Health,  
ou=Alameda County,  
email=jerry.wickham@acgov.org, c=US  
Date: 2012.04.11 18:12:33 -07'00'

Jerry Wickham, California PG 3766, CEG 1177, and CHG 297  
Senior Hazardous Materials Specialist



Masood Amini Filibadi and Shahrbanu Amini  
RO0002894  
April 12, 2012  
Page 2

Attachments: Responsible Party(ies) Legal Requirements/Obligations

Enclosure: ACEH Electronic Report Upload (ftp) Instructions

cc: Danielle Stefani, Livermore Pleasanton Fire Department, 3560 Nevada St, Pleasanton, CA 94566  
(Sent via E-mail to: [dstefani@lpfire.org](mailto:dstefani@lpfire.org))

Colleen Winey (QIC 8021), Zone 7 Water Agency, 100 North Canyons Pkwy, Livermore, CA 94551  
(Sent via E-mail to: [cwiney@zone7water.com](mailto:cwiney@zone7water.com))

Raynold I. Kablanow II, Geological Technics, Inc., 1172 Kansas Avenue, Stockton, CA 95351 (Sent  
via E-mail to: [gti@gtienv.com](mailto:gti@gtienv.com))

Jenny Weese, Geological Technics, Inc., 1172 Kansas Avenue, Stockton, CA 95351 (Sent via E-  
mail to: [jennyw@gtienv.com](mailto:jennyw@gtienv.com))

Donna Drogos, ACEH (Sent via E-mail to: [donna.drogos@acgov.org](mailto:donna.drogos@acgov.org))  
Jerry Wickham, ACEH (Sent via E-mail to: [jerry.wickham@acgov.org](mailto:jerry.wickham@acgov.org))

GeoTracker, eFile

## **Appendix C**

---

### **Monitoring Well Abandonment Permit**



# ZONE 7 WATER AGENCY

100 NORTH CANYONS PARKWAY, LIVERMORE, CALIFORNIA 94551 VOICE (925) 454-5000 FAX (925) 245-9306

E-MAIL [whong@zone7water.com](mailto:whong@zone7water.com)

## DRILLING PERMIT APPLICATION

FOR APPLICANT TO COMPLETE

FOR OFFICE USE

LOCATION OF PROJECT 909 Blue Bell Drive  
Livermore, CA

PERMIT NUMBER 2012055  
WELL NUMBER STMW-4, VE-1, VE-2, R-1, R-2  
APN 099-0022-001-00

Coordinates Source \_\_\_\_\_ ft. Accuracy \_\_\_\_\_ ft.  
LAT: \_\_\_\_\_ ft. LONG: \_\_\_\_\_ ft.  
APN \_\_\_\_\_

### PERMIT CONDITIONS

(Circled Permit Requirements Apply)

CLIENT Masood Aminifilibadi  
Name \_\_\_\_\_  
Address 909 Blue Bell Drive Phone (925) 487-2598  
City Livermore Zip 95353

### A. GENERAL

1. A permit application should be submitted so as to arrive at the Zone 7 office five days prior to your proposed starting date.
2. Submit to Zone 7 within 60 days after completion of permitted work the original Department of Water Resources Water Well Drillers Report (DWR Form 186), signed by the driller.
3. Permit is void if project not begun within 90 days of approval date.
4. Notify Zone 7 at least 24 hours before the start of work.

APPLICANT Geological Technics Inc.  
Name \_\_\_\_\_  
Email gti@gtienv.com Fax (209) 522-4227  
Address 1172 Kansas Avenue Phone (209) 522-4119  
City Modesto Zip \_\_\_\_\_

### B. WATER SUPPLY WELLS

1. Minimum surface seal diameter is four inches greater than the well casing diameter.
2. Minimum seal depth is 50 feet for municipal and industrial wells or 20 feet for domestic and irrigation wells unless a lesser depth is specially approved.
3. Grout placed by tremie.
4. An access port at least 0.5 inches in diameter is required on the wellhead for water level measurements.
5. A sample port is required on the discharge pipe near the wellhead.

### TYPE OF PROJECT:

Well Construction	_____	Geotechnical Investigation	_____
Well Destruction	<input checked="" type="checkbox"/>	Contamination Investigation	_____
Cathodic Protection	_____	Other	_____

### PROPOSED WELL USE: Not Applicable

Domestic	_____	Irrigation	_____
Municipal	_____	Remediation	_____
Industrial	_____	Groundwater Monitoring	_____
Dewatering	_____	Other	_____

### C. GROUNDWATER MONITORING WELLS INCLUDING PIEZOMETERS

1. Minimum surface seal diameter is four inches greater than the well or piezometer casing diameter.
2. Minimum seal depth for monitoring wells is the maximum depth practicable or 20 feet.
3. Grout placed by tremie.

### DRILLING METHOD:

Mud Rotary	_____	Air Rotary	_____	Hollow Stem Auger	<input checked="" type="checkbox"/>
Cable Tool	_____	Direct Push	_____	Other	_____

DRILLING COMPANY V&W Drilling

DRILLER'S LICENSE NO. 720904

### D. GEOTECHNICAL. Backfill bore hole with compacted cuttings or heavy bentonite and upper two feet with compacted material. In areas of known or suspected contamination, tremied cement grout shall be used in place of compacted cuttings.

### WELL SPECIFICATIONS: Not Applicable

Drill Hole Diameter	_____ in.	Maximum	_____ ft.
Casing Diameter	_____ in.	Depth	_____ ft.
Surface Seal Depth	_____ ft.	Number	_____

### E. CATHODIC. Fill hole above anode zone with concrete placed by tremie.

### SOIL BORINGS: Not Applicable

Number of Borings	_____	Maximum	_____
Hole Diameter	_____ in.	Depth	_____ ft.

### F. WELL DESTRUCTION. See attached.

ESTIMATED STARTING DATE June 5&6, 2012  
ESTIMATED COMPLETION DATE June 6, 2012

### G. SPECIAL CONDITIONS. Submit to Zone 7 within 60 days after completion of permitted work the well installation report including all soil and water laboratory analysis results.

I hereby agree to comply with all requirements of this permit and Alameda County Ordinance No. 73-68.

APPLICANT'S SIGNATURE [Signature] Date 5/18/12

Approved [Signature] Date 6/4/12  
Wyman Hong

ATTACH SITE PLAN OR SKETCH

June 4, 2012

**Zone 7  
Water Resources Engineering  
Groundwater Protection Ordinance**

Springtown Gas - Masood Aminifilibadi  
909 Bluebell Drive  
Livermore  
Wells 3S/2E-3G19 (VE-1), 3S/2E-3G20 (VE-2), 3S/2E-3G21 (R-1), STMW-4 and  
R-2  
Permit 2012055

**Destruction Requirements:**

1. Remove from the well any pump, appurtenances, debris, or other materials.
2. Sound the well as deeply as practicable and record for your report.
3. Fill casing with neat cement or cement grout sealing material to two feet below the finished grade and pressurize to 25 psi and maintain for 5 minutes, forcing the sealing material through the existing perforations and into the surrounding formation.
4. Release the pressure and refill the empty portion of the casing with grouting material allowing it to spill over the top of the casing to form a cap.
5. Cut and remove any casing(s) to two feet below the finished grade or original ground, whichever is the lower elevation (optional).
6. After seal has set, backfill the remaining hole with compacted material.



# ZONE 7 WATER AGENCY

100 NORTH CANYONS PARKWAY, LIVERMORE, CALIFORNIA 94551 VOICE (925) 454-5000 FAX (925) 245-9306  
E-MAIL [whong@zone7water.com](mailto:whong@zone7water.com)

## DRILLING PERMIT APPLICATION

FOR APPLICANT TO COMPLETE

FOR OFFICE USE

LOCATION OF PROJECT 909 Blue Bell Drive  
Livermore, CA

PERMIT NUMBER 2012043  
WELL NUMBER 3S/2E-3G16 to 3G18, 3G22 to 3G26  
APN 099-0022-001-00

Coordinates Source \_\_\_\_\_ ft. Accuracy \_\_\_\_\_ ft.  
LAT: \_\_\_\_\_ ft. LONG: \_\_\_\_\_ ft.  
APN \_\_\_\_\_

### PERMIT CONDITIONS

(Circled Permit Requirements Apply)

CLIENT Masood Aminifilibadi  
Name \_\_\_\_\_  
Address 909 Blue Bell Drive Phone (925) 487-2598  
City Livermore Zip 95353



#### GENERAL

1. A permit application should be submitted so as to arrive at the Zone 7 office five days prior to your proposed starting date.
2. Submit to Zone 7 within 60 days after completion of permitted work the original Department of Water Resources Water Well Driller's Report (DWR Form 188), signed by the driller.
3. Permit is void if project not begun within 90 days of approval date.
4. **Notify Zone 7 at least 24 hours before the start of work.**

APPLICANT Geological Technics Inc.  
Name \_\_\_\_\_  
Email gti@gtienv.com Fax (209) 522-4227  
Address 1172 Kansas Avenue Phone (209) 522-4119  
City Modesto Zip \_\_\_\_\_

B.

#### WATER SUPPLY WELLS

1. Minimum surface seal diameter is four inches greater than the well casing diameter.
2. Minimum seal depth is 50 feet for municipal and industrial wells or 20 feet for domestic and irrigation wells unless a lesser depth is specially approved.
3. Grout placed by tremie.
4. An access port at least 0.5 inches in diameter is required on the wellhead for water level measurements.
5. A sample port is required on the discharge pipe near the wellhead.

#### TYPE OF PROJECT:

Well Construction	_____	Geotechnical Investigation	_____
Well Destruction	<input checked="" type="checkbox"/>	Contamination Investigation	_____
Cathodic Protection	_____	Other	_____

#### PROPOSED WELL USE: Not Applicable

Domestic	_____	Irrigation	_____
Municipal	_____	Remediation	_____
Industrial	_____	Groundwater Monitoring	_____
Dewatering	_____	Other	_____

#### DRILLING METHOD:

Mud Rotary	_____	Air Rotary	_____	Hollow Stem Auger	<input checked="" type="checkbox"/>
Cable Tool	_____	Direct Push	_____	Other	_____

DRILLING COMPANY V&W Drilling

DRILLER'S LICENSE NO. 720904

#### WELL SPECIFICATIONS: Not Applicable

Drill Hole Diameter	_____ in.	Maximum	_____
Casing Diameter	_____ in.	Depth	_____ ft.
Surface Seal Depth	_____ ft.	Number	_____

#### SOIL BORINGS: Not Applicable

Number of Borings	_____	Maximum	_____
Hole Diameter	_____ in.	Depth	_____ ft.

ESTIMATED STARTING DATE May 14, 2012? (ASAP)  
ESTIMATED COMPLETION DATE May 15, 2012

I hereby agree to comply with all requirements of this permit and Alameda County Ordinance No. 73-88.

APPLICANT'S SIGNATURE [Signature] Date 5/4/12



WELL DESTRUCTION. See attached.



SPECIAL CONDITIONS. Submit to Zone 7 within 60 days after completion of permitted work the well installation report including all soil and water laboratory analysis results.

Approved [Signature] Date 5/9/12

Wyman Hong

ATTACH SITE PLAN OR SKETCH

May 9, 2012

**Zone 7  
Water Resources Engineering  
Groundwater Protection Ordinance**

Springtown Gas - Masood Aminifilibadi  
909 Bluebell Drive  
Livermore

Wells 3S/2E-3G16 to 3G18 (STMW-1 to STMW-3), 3S/2E-3G22 to 3G26 (MW-4,  
MW-101, MW-102, MW-103)  
Permit 2012043

**Destruction Requirements:**

1. Remove from the well any pump, appurtenances, debris, or other materials.
2. Sound the well as deeply as practicable and record for your report.
3. Fill casing with neat cement or cement grout sealing material to two feet below the finished grade and pressurize to 25 psi and maintain for 5 minutes, forcing the sealing material through the existing perforations and into the surrounding formation.
4. Release the pressure and refill the empty portion of the casing with grouting material allowing it to spill over the top of the casing to form a cap.
5. Cut and remove any casing(s) to two feet below the finished grade or original ground, whichever is the lower elevation (optional).
6. After seal has set, backfill the remaining hole with compacted material.

## **Appendix D**

---

### **Piping & Well Abandonment Photos**





## **Appendix E**

---

### **Public Notification Documents**

# Geological Technics Inc.

1172 Kansas Avenue  
Modesto, CA 95351  
209.522.4119  
209.522.4227 (fax)  
gti@gtienv.com

December 29, 2011

Mr. Jerry Wickham  
Alameda County Environmental Health Services (ACEHS)  
1131 Harbor Bay Parkway, Suite 200  
Alameda, CA 94502-6577

RE: Public Notification of Potential Case Closure

Site: Springtown Gas, 909 Bluebell Drive, Livermore, California  
Project Number: 1409.2

Dear Mr. Wickham,

Geological Technics Inc. (GTI) has completed the public notification per your request dated November 15, 2011.

Attached you will find a copy of the notification letter, list of recipients and tracking information or return receipt if applicable.

If you have any questions or need further information please call our office as soon as possible.

Thank you,



Jenny Weese  
Chief of Operations

Cc: Mr. Massod and Sharbano Amini  
USTCFP





ENVIRONMENTAL HEALTH SERVICES  
ENVIRONMENTAL PROTECTION  
1131 Harbor Bay Parkway, Suite 250  
Alameda, CA 94502-6577  
(510) 567-6700  
FAX (510) 337-9335

November 15, 2011

Masood Amini Filibadi and Shahrbanu Amini  
Springtown Gas  
909 Bluebell Drive  
Livermore, CA 94551-1419

Subject: Case Closure Review of Fuel Leak Case No. RO0002894 and GeoTracker Global ID T06019716197, Springtown Gas, 909 Bluebell Drive, Livermore, CA 94551

Dear Masood Amini Filibadi and Shahrbanu Amini:

Alameda County Environmental Health (ACEH) staff has reviewed the case file for the above-referenced fuel leak case, including the recently submitted report entitled, "*Groundwater Monitoring and Interim Remedial Action Status (2<sup>nd</sup> Semi-Annual Report), Springtown Gas, 909 Bluebell Drive, Livermore, California,*" dated October 4, 2011 (Report). The Report, which was prepared on your behalf by Geological Technics, Inc., presents results from groundwater sampling conducted on August 29, 2011 and recommends that the site be considered for low-risk closure. ACEH will review the case for potential case closure. Pending completion of the case closure review, groundwater monitoring may be suspended at this time.

Pursuant to Section 25297.15 (a), ACEH, the local agency, shall not consider cleanup or site closure proposals from the primary or active responsible party, issue a closure letter, or make a determination that no further action is required with respect to a site upon which there was an unauthorized release of hazardous substances from an underground storage tank subject to this chapter unless all current record owners of fee title to the site of the proposed action have been notified of the proposed action by the primary or active responsible party. ACEH is required to notify the primary or active responsible party of their requirement to certify in writing to the local agency that the notification requirement in the above-mentioned regulation has been satisfied and to provide the local agency with a complete mailing list of all record fee title owners.

To satisfy the above-mentioned requirement, please complete the enclosed "List of Landowners Form," and mail it back to ACEH within thirty (30) days from the date of this letter. Also your comments must be considered prior to the proposed cleanup or closure. Please respond within 30 days from the date of this letter for your comments to be considered.

ACEH will review the case for possible closure under a commercial land use scenario with the following site management requirements:

*"Case closure for the fuel leak site is granted for the current commercial land use only. If a change in land use to any residential or other conservative land use scenario occurs at this site, Alameda County Environmental Health (ACEH) must be notified as required by Government Code Section 65850.2.2. ACEH will re-evaluate the case upon receipt of approved development/construction plans. Excavation or construction activities in the areas of residual contamination require planning and implementation of appropriate health and safety procedures by the responsible party prior to and during excavation and construction activities."*

Public participation is a requirement for the Corrective Action Plan and case closure process. In order to notify potentially affected members of the public of the potential fuel leak case closure, we request that you distribute the attached Notification of Potential Case Closure to the addresses shown on attached mailing list **no later than November 21, 2011**. We also request that you distribute the Notification to any persons, corporations, groups, or government agencies that may have an interest in closure of this fuel leak case. The Notification of Potential Case Closure requests that landowners or residents submit any comments or questions to ACEH regarding potential case closure by December 22, 2011. ~~Following distribution by U.S. Mail to the attached mailing list, please submit written verification of the date that the Notification of Potential Case Closure was distributed.~~ ACEH will consider all comments from the public prior to potential case closure.

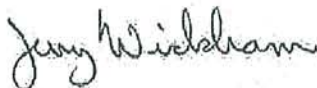
### TECHNICAL REPORT REQUEST

Please submit technical reports to Alameda County Environmental Health (Attention: Jerry Wickham), according to the following schedule:

- **November 21, 2011** – Verification that Notification of Potential Case Closure was distributed

If you have any questions, please call me at (510) 567-6791 or send me an electronic mail message at [jerry.wickham@acgov.org](mailto:jerry.wickham@acgov.org). Online case files are available for review at the following website: <http://www.acgov.org/aceh/index.htm>. If your email address does not appear on the cover page of this notification ACEH is requesting you provide your email address so that we can correspond with you quickly and efficiently regarding your case.

Sincerely,



Digitally signed by Jerry Wickham  
DN: cn=Jerry Wickham, o=Environmental Health,  
ou=Alameda County, email=jerry.wickham@acgov.org,  
c=US  
Date: 2011.11.15 15:43:33 -08'00'

Jerry Wickham, California PG 3766, CEG 1177, and CHG 297  
Senior Hazardous Materials Specialist

Attachments: Notification of Potential Case Closure  
Mailing List  
Landowners Form  
Responsible Party(ies) Legal Requirements/Obligations  
Enclosure: ACEH Electronic Report Upload (ftp) Instructions

cc: Danielle Stefani, Livermore Pleasanton Fire Department, 3560 Nevada St, Pleasanton, CA 94566  
(Sent via E-mail to: [dstefani@lpfire.org](mailto:dstefani@lpfire.org))

Colleen Winey (QIC 8021), Zone 7 Water Agency, 100 North Canyons Pkwy, Livermore, CA 94551  
(Sent via E-mail to: [cwiney@zone7water.com](mailto:cwiney@zone7water.com))

Masood Amini Filibadi and Shahrbanu Amini RO0002894  
November 15, 2011  
Page 3

Raynold I. Kablanow II, Geological Technics, Inc., 1172 Kansas Avenue, Stockton, CA 95351 (*Sent via E-mail to: [RayK@gtienv.com](mailto:RayK@gtienv.com)*)

Donna Drogos, ACEH (*Sent via E-mail to: [donna.drogos@acgov.org](mailto:donna.drogos@acgov.org)*)  
Jerry Wickham, ACEH (*Sent via E-mail to: [jerry.wickham@acgov.org](mailto:jerry.wickham@acgov.org)*)

GeoTracker, eFile

<b>Alameda County Environmental Cleanup Oversight Programs (LOP and SLIC)</b>	<b>REVISION DATE:</b> July 20, 2010
	<b>ISSUE DATE:</b> July 5, 2005
	<b>PREVIOUS REVISIONS:</b> October 31, 2005; December 16, 2005; March 27, 2009; July 8, 2010
<b>SECTION:</b> Miscellaneous Administrative Topics & Procedures	<b>SUBJECT:</b> Electronic Report Upload (ftp) Instructions

The Alameda County Environmental Cleanup Oversight Programs (LOP and SLIC) require submission of all reports in electronic form to the county's ftp site. Paper copies of reports will no longer be accepted. The electronic copy replaces the paper copy and will be used for all public information requests, regulatory review, and compliance/enforcement activities.

#### REQUIREMENTS

- **Please do not submit reports as attachments to electronic mail.**
- Entire report including cover letter must be submitted to the ftp site as a **single portable document format (PDF) with no password protection.**
- It is **preferable** that reports be converted to PDF format from their original format, (e.g., Microsoft Word) rather than scanned.
- **Signature pages and perjury statements must be included and have either original or electronic signature.**
- **Do not password protect the document.** Once indexed and inserted into the correct electronic case file, the document will be secured in compliance with the County's current security standards and a password. **Documents with password protection will not be accepted.**
- Each page in the PDF document should be rotated in the direction that will make it easiest to read on a computer monitor.
- Reports must be named and saved using the following naming convention:

RO#\_Report Name\_Year-Month-Date (e.g., RO#5555\_WorkPlan\_2005-06-14)

#### Submission Instructions

- 1) Obtain User Name and Password
  - a) Contact the Alameda County Environmental Health Department to obtain a User Name and Password to upload files to the ftp site.
    - i) Send an e-mail to [deh.loptoxic@acgov.org](mailto:deh.loptoxic@acgov.org)
  - b) In the subject line of your request, be sure to include **"ftp PASSWORD REQUEST"** and in the body of your request, include the **Contact Information, Site Addresses, and the Case Numbers (RO# available in Geotracker) you will be posting for.**
- 2) Upload Files to the ftp Site
  - a) Using Internet Explorer (IE4+), go to <ftp://alcoftp1.acgov.org>
    - (i) Note: Netscape, Safari, and Firefox browsers will not open the FTP site as they are NOT being supported at this time.
  - b) Click on Page located on the Command bar on upper right side of window, and then scroll down to Open FTP Site in Windows Explorer.
  - c) Enter your User Name and Password. (Note: Both are Case Sensitive.)
  - d) Open "My Computer" on your computer and navigate to the file(s) you wish to upload to the ftp site.
  - e) With both "My Computer" and the ftp site open in separate windows, drag and drop the file(s) from "My Computer" to the ftp window.
- 3) Send E-mail Notifications to the Environmental Cleanup Oversight Programs
  - a) Send email to [deh.loptoxic@acgov.org](mailto:deh.loptoxic@acgov.org) notify us that you have placed a report on our ftp site.
  - b) Copy your Caseworker on the e-mail. Your Caseworker's e-mail address is the entire first name then a period and entire last name @acgov.org. (e.g., firstname.lastname@acgov.org)
  - c) The subject line of the e-mail must start with the RO# followed by **Report Upload.** (e.g., Subject: RO1234 Report Upload) If site is a new case without an RO#, use the street address instead.
  - d) If your document meets the above requirements and you follow the submission instructions, you will receive a notification by email indicating that your document was successfully uploaded to the ftp site.



ENVIRONMENTAL HEALTH SERVICES  
ENVIRONMENTAL PROTECTION  
1131 Harbor Bay Parkway, Suite 250  
Alameda, CA 94502-6577  
(510) 567-6700  
FAX (510) 337-9335

**NOTIFICATION OF POTENTIAL CASE CLOSURE**  
**SPRINGTOWN GAS**  
**November 16, 2011**

**Site Location: 909 Bluebell Drive, Livermore, CA 94551**  
**Fuel Leak Case RO0002894 and GeoTracker Global ID T06019716197**

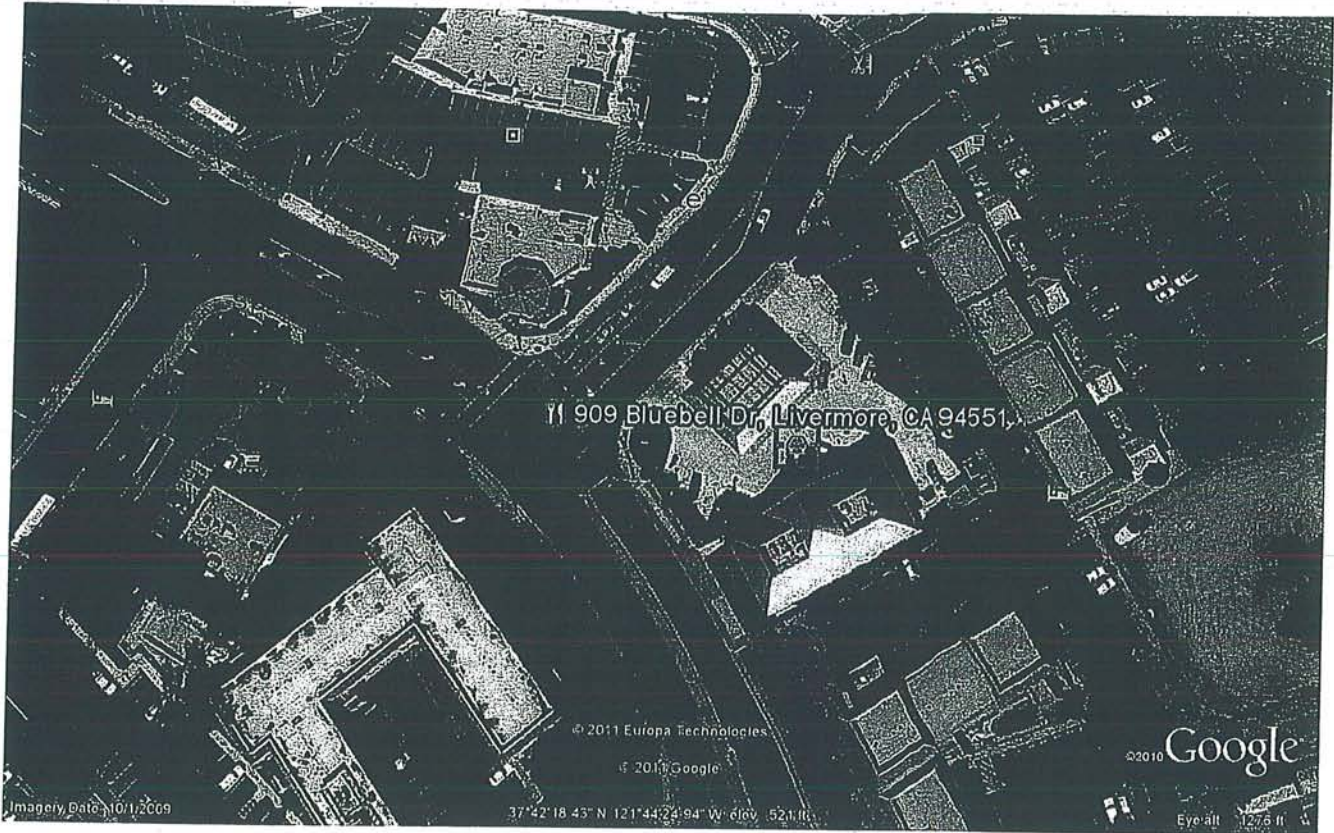
**Summary** – This fact sheet has been prepared to inform community members and other interested parties of potential case closure for a fuel leak case at a gasoline service station and convenience market located at the intersection of Springtown Boulevard and Bluebell Drive in Livermore, California (see attached map on back). Surrounding land use is commercial.

During dispenser and piping upgrade activities in June 2005, elevated concentrations of petroleum hydrocarbons were detected in soil samples collected beneath the dispensers and product piping trenches. Some contaminated soil was removed by excavation. Various site investigation activities including soil borings, monitoring well installation, and groundwater sampling were conducted on site and northwest of the site (in the direction of groundwater flow) between February 2007 and March 2010. The site investigations indicated that residual petroleum hydrocarbons were present in soil and groundwater in the area of the underground storage tanks, dispensers, and piping and that a plume of dissolved fuel oxygenates (primarily MTBE and TBA) extended northwest of the underground storage tank area.

In June 2008, a pilot test was conducted to evaluate whether soil vapor extraction would be an effective method for site cleanup. The results were inconclusive. After installation of an injection well in September 2008, a pilot test was conducted to evaluate whether in-situ chemical oxidation would be an effective method for site cleanup. The initial pilot test was performed between September 29 and November 6, 2008. An additional pilot test of chemical oxidation consisting of 16 injection events took place between March 30, 2010 and July 21, 2010. Following groundwater monitoring to evaluate the results of the pilot test, 12 additional injection events were conducted from December 14, 2010 through March 10, 2011. Groundwater monitoring since March 2011, indicates that the chemical oxidation treatment has been effective in reducing the concentrations of fuel oxygenates in groundwater. Groundwater quality is expected to be restored within an acceptable time frame by natural attenuation processes. No water supply wells are expected to be affected by the plume. Site investigation and cleanup activities have been completed and it does not appear that the fuel release presents a risk to human health for nearby residents or site workers. Therefore, ACEH is considering potential closure of the fuel leak case.

**Next Step** – The public is invited to review and comment on the potential closure of the fuel leak case. The entire case file can be viewed over the Internet on the ACEH website (<http://www.acgov.org/aceh/lop/ust.htm>) or the State of California Water Resources Control Board Geotracker website (<http://geotracker.swrcb.ca.gov>). Please send written comments to Jerry Wickham at the address below; all comments will be forwarded to the responsible parties. **Comments received by December 19, 2011** will be considered and responded to prior to a final determination on the proposed case closure.

Additional information: Contact Jerry Wickham of the Alameda County Department of Environmental Health, 1131 Harbor Bay Parkway, Alameda, CA 94502 at 510-567-6791 or by email at [jerry.wickham@acgov.org](mailto:jerry.wickham@acgov.org)



11 909 Bluebell Dr, Livermore, CA 94551

© 2011 Europa Technologies

© 2010 Google

©2010 Google

Imagery Date: 10/1/2009

37°42'18.43" N 121°44'24.94" W 616v 521 ft

Eye-alt 127.6 ft



## Attachment 1

### Responsible Party(ies) Legal Requirements / Obligations

#### REPORT REQUESTS

These reports are being requested pursuant to California Health and Safety Code Section 25296.10. 23 CCR Sections 2652 through 2654, and 2721 through 2728 outline the responsibilities of a responsible party in response to an unauthorized release from a petroleum UST system, and require your compliance with this request.

#### ELECTRONIC SUBMITTAL OF REPORTS

ACEH's Environmental Cleanup Oversight Programs (LOP and SLIC) require submission of reports in electronic form. The electronic copy replaces paper copies and is expected to be used for all public information requests, regulatory review, and compliance/enforcement activities. Instructions for submission of electronic documents to the Alameda County Environmental Cleanup Oversight Program FTP site are provided on the attached "Electronic Report Upload Instructions." Submission of reports to the Alameda County FTP site is an addition to existing requirements for electronic submittal of information to the State Water Resources Control Board (SWRCB) GeoTracker website. In September 2004, the SWRCB adopted regulations that require electronic submittal of information for all groundwater cleanup programs. For several years, responsible parties for cleanup of leaks from underground storage tanks (USTs) have been required to submit groundwater analytical data, surveyed locations of monitoring wells, and other data to the GeoTracker database over the Internet. Beginning July 1, 2005, these same reporting requirements were added to Spills, Leaks, Investigations, and Cleanup (SLIC) sites. Beginning July 1, 2005, electronic submittal of a complete copy of all reports for all sites is required in GeoTracker (in PDF format). Please visit the SWRCB website for more information on these requirements ([http://www.waterboards.ca.gov/water\\_issues/programs/ust/electronic\\_submittal/](http://www.waterboards.ca.gov/water_issues/programs/ust/electronic_submittal/)).

#### PERJURY STATEMENT

All work plans, technical reports, or technical documents submitted to ACEH must be accompanied by a cover letter from the responsible party that states, at a minimum, the following: "I declare, under penalty of perjury, that the information and/or recommendations contained in the attached document or report is true and correct to the best of my knowledge." This letter must be signed by an officer or legally authorized representative of your company. Please include a cover letter satisfying these requirements with all future reports and technical documents submitted for this fuel leak case.

#### PROFESSIONAL CERTIFICATION & CONCLUSIONS/RECOMMENDATIONS

The California Business and Professions Code (Sections 6735, 6835, and 7835.1) requires that work plans and technical or implementation reports containing geologic or engineering evaluations and/or judgments be performed under the direction of an appropriately registered or certified professional. For your submittal to be considered a valid technical report, you are to present site specific data, data interpretations, and recommendations prepared by an appropriately licensed professional and include the professional registration stamp, signature, and statement of professional certification. Please ensure all that all technical reports submitted for this fuel leak case meet this requirement.

#### UNDERGROUND STORAGE TANK CLEANUP FUND

Please note that delays in investigation, later reports, or enforcement actions may result in your becoming ineligible to receive grant money from the state's Underground Storage Tank Cleanup Fund (Senate Bill 2004) to reimburse you for the cost of cleanup.

#### AGENCY OVERSIGHT

If it appears as though significant delays are occurring or reports are not submitted as requested, we will consider referring your case to the Regional Board or other appropriate agency, including the County District Attorney, for possible enforcement actions. California Health and Safety Code, Section 25299.76 authorizes enforcement including administrative action or monetary penalties of up to \$10,000 per day for each day of violation.

AHN INVESTMENTS INC &  
Parcel #: 99-22-5-1  
933 BLUEBELL DR  
LIVERMORE CA 94551

~~AHN INVESTMENTS INC. &  
Parcel #: 99-22-4-5  
933 BLUEBELL DR  
LIVERMORE CA 94551~~

AMINIFILABADI MOHSEN  
Parcel #: 99-22-1  
909 BLUEBELL DR  
LIVERMORE CA 94551

CITY OF LIVERMORE  
Parcel #: 99-33-11  
650 CALIFORNIA ST #18  
SAN FRANCISCO CA 94108

D SPRINGTOWN LLC  
Parcel #: 99-23-3-3  
P.O. BOX 225245  
SAN FRANCISCO CA 94122

GLASJAR PROPERTY LLC  
Parcel #: 99-23-7-2  
2295 CORPORATE BLVD #222  
BOCA RATON FL 33431

KC PROPCO LLC  
Parcel #: 99-23-7-1  
2601 S BAYSHORE DR #9  
COCONUT GROVE FL 33133

LIVERMORE PLEASANTON  
Parcel #: 99-23-3-2  
940 LARKSPUR DR  
LIVERMORE CA 94551

PR PROPERTIES LP  
Parcel #: 99-22-3  
610 N SANTA ANITA AVE  
ARCADIA CA 91006

~~RESIDENT  
Parcel #: 99-1317-22  
SPRING VLY  
LIVERMORE CA 94550~~

RESIDENT  
Parcel #: 99-22-3  
720 LAS FLORES RD  
LIVERMORE CA 94551

RESIDENT  
Parcel #: 99-23-7-2  
4673 LASSEN RD  
LIVERMORE CA 94551

RESIDENT  
Parcel #: 99-23-7-1  
4655 LASSEN RD  
LIVERMORE CA 94551

RESIDENT  
Parcel #: 99-23-4  
930 SPRINGTOWN BLVD  
LIVERMORE CA 94551

RESIDENT  
Parcel #: 99-23-3-3  
922 LARKSPUR DR #A  
LIVERMORE CA 94551

RESIDENT  
Parcel #: 99-33-11  
HEATHER LN  
LIVERMORE CA 94550

SOUTHLAND CORPORATION  
Parcel #: 99-23-4  
PO BOX 711  
DALLAS TX 75221

SPRING VALLEY  
Parcel #: 99-1317-22  
2483 E BAYSHORE RD #102  
PALO ALTO CA 94303

SPRINGTOWN ASSOCIATION  
Parcel #: 99-31-19  
931 LARKSPUR DR  
LIVERMORE CA 94551

7004 0750 0000 6583 5084

U.S. Postal Service™  
**CERTIFIED MAIL™ RECEIPT**  
(Domestic Mail Only; No Insurance Coverage Provided)

For delivery information visit our website at [www.usps.com](http://www.usps.com)

**OFFICIAL USE**

Postage	\$	Postmark Here
Certified Fee		
Return Receipt Fee (Endorsement Required)		
Restricted Delivery Fee (Endorsement Required)		

AHN Investments Inc.  
933 Bluebell Drive  
Livermore, CA 94551

7004 0750 0000 6583 5077

U.S. Postal Service™  
**CERTIFIED MAIL™ RECEIPT**  
(Domestic Mail Only; No Insurance Coverage Provided)

For delivery information visit our website at [www.usps.com](http://www.usps.com)

**OFFICIAL USE**

Postage	\$	Postmark Here
Certified Fee		
Return Receipt Fee (Endorsement Required)		
Restricted Delivery Fee (Endorsement Required)		

Springtown Association  
931 Larkspur Drive  
Livermore, CA 94551

7004 0750 0000 6583 5091

U.S. Postal Service™  
**CERTIFIED MAIL™ RECEIPT**  
(Domestic Mail Only; No Insurance Coverage Provided)

For delivery information visit our website at [www.usps.com](http://www.usps.com)

**OFFICIAL USE**

Postage	\$	Postmark Here
Certified Fee		
Return Receipt Fee (Endorsement Required)		
Restricted Delivery Fee (Endorsement Required)		

Resident  
922 Larkspur Drive #A  
Livermore, CA 94551

7004 0750 0000 6583 5060

U.S. Postal Service™  
**CERTIFIED MAIL™ RECEIPT**  
(Domestic Mail Only; No Insurance Coverage Provided)

For delivery information visit our website at [www.usps.com](http://www.usps.com)

**OFFICIAL USE**

Postage	\$	Postmark Here
Certified Fee		
Return Receipt Fee (Endorsement Required)		
Restricted Delivery Fee (Endorsement Required)		

Spring Valley  
2483 E Bayshore Road, #102  
Palo Alto, CA 94303

7004 0750 0000 6583 5114

U.S. Postal Service™  
**CERTIFIED MAIL™ RECEIPT**  
(Domestic Mail Only; No Insurance Coverage Provided)

For delivery information visit our website at [www.usps.com](http://www.usps.com)

**OFFICIAL USE**

Postage	\$	Postmark Here
Certified Fee		
Return Receipt Fee (Endorsement Required)		
Restricted Delivery Fee (Endorsement Required)		

PR Properties LP  
610 N Santa Anita Avenue  
Arcadia, CA 91006

7004 0750 0000 6583 5107

U.S. Postal Service™  
**CERTIFIED MAIL™ RECEIPT**  
(Domestic Mail Only; No Insurance Coverage Provided)

For delivery information visit our website at [www.usps.com](http://www.usps.com)

**OFFICIAL USE**

Postage	\$	Postmark Here
Certified Fee		
Return Receipt Fee (Endorsement Required)		
Restricted Delivery Fee (Endorsement Required)		

Resident  
4673 Lassen Road  
Livermore, CA 94551

7004 0750 0000 6583 5138

U.S. Postal Service™  
**CERTIFIED MAIL™ RECEIPT**  
(Domestic Mail Only; No Insurance Coverage Provided)

For delivery information visit our website at [www.usps.com](http://www.usps.com)

**OFFICIAL USE**

Postage	\$	Postmark Here
Certified Fee		
Return Receipt Fee (Endorsement Required)		
Restricted Delivery Fee (Endorsement Required)		

Mohsen Aminifilibadi  
909 Bluebell Drive  
Livermore, CA 94551

7004 0750 0000 6583 5121

U.S. Postal Service™  
**CERTIFIED MAIL™ RECEIPT**  
(Domestic Mail Only; No Insurance Coverage Provided)

For delivery information visit our website at [www.usps.com](http://www.usps.com)

**OFFICIAL USE**

Postage	\$	Postmark Here
Certified Fee		
Return Receipt Fee (Endorsement Required)		
Restricted Delivery Fee (Endorsement Required)		

Glasjar Property LLC  
2295 Corporate Blvd. #222  
Boca Raton, FL 33431

7004 0750 0000 6583 5152

U.S. Postal Service™  
**CERTIFIED MAIL™ RECEIPT**  
(Domestic Mail Only; No Insurance Coverage Provided)

For delivery information visit our website at [www.usps.com](http://www.usps.com)

**OFFICIAL USE**

Postage	\$	Postmark Here
Certified Fee		
Return Receipt Fee (Endorsement Required)		
Restricted Delivery Fee (Endorsement Required)		

Livermore Pleasanton  
940 Larkspur Drive  
Livermore, CA 94551

7004 0750 0000 6583 5145

U.S. Postal Service™  
**CERTIFIED MAIL™ RECEIPT**  
(Domestic Mail Only; No Insurance Coverage Provided)

For delivery information visit our website at [www.usps.com](http://www.usps.com)

**OFFICIAL USE**

Postage	\$	Postmark Here
Certified Fee		
Return Receipt Fee (Endorsement Required)		
Restricted Delivery Fee (Endorsement Required)		

Resident  
720 Las Flores Road  
Livermore, CA 94551

7004 0750 0000 6583 5176

U.S. Postal Service™  
**CERTIFIED MAIL™ RECEIPT**  
(Domestic Mail Only; No Insurance Coverage Provided)

For delivery information visit our website at [www.usps.com](http://www.usps.com)

**OFFICIAL USE**

Postage	\$	Postmark Here
Certified Fee		
Return Receipt Fee (Endorsement Required)		
Restricted Delivery Fee (Endorsement Required)		

Resident  
4655 Lassen Road  
Livermore, CA 94551

7004 0750 0000 6583 5169

U.S. Postal Service™  
**CERTIFIED MAIL™ RECEIPT**  
(Domestic Mail Only; No Insurance Coverage Provided)

For delivery information visit our website at [www.usps.com](http://www.usps.com)

**OFFICIAL USE**

Postage	\$	Postmark Here
Certified Fee		
Return Receipt Fee (Endorsement Required)		
Restricted Delivery Fee (Endorsement Required)		

KC Propco LLC  
2601 S Bayshore Drive, #9  
Coconut Grove, FL 33133

7004 0750 0000 6583 5190

U.S. Postal Service™  
**CERTIFIED MAIL™ RECEIPT**  
(Domestic Mail Only; No Insurance Coverage Provided)

For delivery information visit our website at [www.usps.com](http://www.usps.com)®

**OFFICIAL USE**

Postage	\$
Certified Fee	
Return Receipt Fee (Endorsement Required)	
Restricted Delivery Fee (Endorsement Required)	

Postmark  
Here

Resident  
930 Springtown Blvd.  
Livermore, CA 94551

7004 0750 0000 6583 5183

U.S. Postal Service™  
**CERTIFIED MAIL™ RECEIPT**  
(Domestic Mail Only; No Insurance Coverage Provided)

For delivery information visit our website at [www.usps.com](http://www.usps.com)®

**OFFICIAL USE**

Postage	\$
Certified Fee	
Return Receipt Fee (Endorsement Required)	
Restricted Delivery Fee (Endorsement Required)	

Postmark  
Here

City of Livermore  
650 California Street, #18  
San Francisco, CA 94108

7004 0750 0000 6583 5125

U.S. Postal Service™  
**CERTIFIED MAIL™ RECEIPT**  
(Domestic Mail Only; No Insurance Coverage Provided)

For delivery information visit our website at [www.usps.com](http://www.usps.com)®

**OFFICIAL USE**

Postage	\$
Certified Fee	
Return Receipt Fee (Endorsement Required)	
Restricted Delivery Fee (Endorsement Required)	

Postmark  
Here

Southland Corporation  
PO Box 711  
Dallas, TX 75221

7004 0750 0000 6583 5206

U.S. Postal Service™  
**CERTIFIED MAIL™ RECEIPT**  
(Domestic Mail Only; No Insurance Coverage Provided)

For delivery information visit our website at [www.usps.com](http://www.usps.com)®

**OFFICIAL USE**

Postage	\$
Certified Fee	
Return Receipt Fee (Endorsement Required)	
Restricted Delivery Fee (Endorsement Required)	

Postmark  
Here

D Springtown LLC  
PO Box 225245  
San Francisco, CA 94122

**SENDER: COMPLETE THIS SECTION**

- Complete items 1, 2, and 3. Also complete item 4 if Restricted Delivery is desired.
- Print your name and address on the reverse so that we can return the card to you.
- Attach this card to the back of the mailpiece, or on the front if space permits.

1. Article Addressed to:

Mohsen Aminifilibadi  
 909 Bluebell Drive  
 Livermore, CA 94551

**COMPLETE THIS SECTION ON DELIVERY**

A. Signature  
 Agent  
 Addressee

B. Received by (Printed Name)

C. Date of Delivery  
 11-30

D. Is delivery address different from item 1?  Yes  
 If YES, enter delivery address below:  No

RECEIVED DEC 02 2011

ail  Express Mail  
 Return Receipt for Merchandise  
 C.O.D.

4. Restricted Delivery? (Extra Fee)  Yes

2. Article Number  
(Transfer from service label)

7004 0750 0000 6583 5138

PS Form 3811, February 2004

Domestic Return Receipt

102595-02-M-1540

**SENDER: COMPLETE THIS SECTION**

- Complete items 1, 2, and 3. Also complete item 4 if Restricted Delivery is desired.
- Print your name and address on the reverse so that we can return the card to you.
- Attach this card to the back of the mailpiece, or on the front if space permits.

1. Article Addressed to:

Livermore Pleasanton  
 940 Larkspur Drive  
 Livermore, CA 94551

**COMPLETE THIS SECTION ON DELIVERY**

A. Signature  
 Agent  
 Addressee

B. Received by (Printed Name)  
 LEONARD STOUT

C. Date of Delivery

D. Is delivery address different from item 1?  Yes  
 If YES, enter delivery address below:  No

RECEIVED DEC 02 2011

Mail  Express Mail  
 Return Receipt for Merchandise  
 C.O.D.

4. Restricted Delivery? (Extra Fee)  Yes

2. Article Number  
(Transfer from service label)

7004 0750 0000 6583 5152

PS Form 3811, February 2004

Domestic Return Receipt

102595-02-M-1540

**SENDER: COMPLETE THIS SECTION**

- Complete items 1, 2, and 3. Also complete item 4 if Restricted Delivery is desired.
- Print your name and address on the reverse so that we can return the card to you.
- Attach this card to the back of the mailpiece, or on the front if space permits.

1. Article Addressed to:

Resident  
 720 Las Flores Road  
 Livermore, CA 94551

**COMPLETE THIS SECTION ON DELIVERY**

A. Signature  
 Agent  
 Addressee

B. Received by (Printed Name)

C. Date of Delivery  
 11-30

D. Is delivery address different from item 1?  Yes  
 If YES, enter delivery address below:  No

RECEIVED DEC 02 2011

ail  Express Mail  
 Return Receipt for Merchandise  
 C.O.D.

4. Restricted Delivery? (Extra Fee)  Yes

2. Article Number  
(Transfer from service label)

7004 0750 0000 6583 5145

PS Form 3811, February 2004

Domestic Return Receipt

102595-02-M-1540

**SENDER: COMPLETE THIS SECTION**

- Complete items 1, 2, and 3. Also complete item 4 if Restricted Delivery is desired.
- Print your name and address on the reverse so that we can return the card to you.
- Attach this card to the back of the mailpiece, or on the front if space permits.

1. Article Addressed to:

AHN Investments Inc  
 933 Bluebell Drive  
 Livermore, CA 94551

**COMPLETE THIS SECTION ON DELIVERY**

A. Signature  Agent  
 X *Vickie Amalade*  Addressee

B. Received by (Printed Name) C. Date of Delivery  
 11-30

D. Is delivery address different from item 1?  Yes  
 If YES, enter delivery address below:  No

RECEIVED DEC 02 2011

Insured Mail  Express Mail  
 Return Receipt for Merchandise  
 C.O.D.

4. Restricted Delivery? (Extra Fee)  Yes

2. Article Number  
(Transfer from service label)

7004 0750 0000 6583 5084

PS Form 3811, February 2004

Domestic Return Receipt

102595-02-M-1540

**SENDER: COMPLETE THIS SECTION**

- Complete items 1, 2, and 3. Also complete item 4 if Restricted Delivery is desired.
- Print your name and address on the reverse so that we can return the card to you.
- Attach this card to the back of the mailpiece, or on the front if space permits.

1. Article Addressed to:

PR Properties LP  
 610 N Santa Anita Avenue  
 Arcadia, CA 91006

**COMPLETE THIS SECTION ON DELIVERY**

A. Signature  Agent  
 X *[Signature]*  Addressee

B. Received by (Printed Name) C. Date of Delivery  
 Elise Flores 12/2/11

D. Is delivery address different from item 1?  Yes  
 If YES, enter delivery address below:  No

RECEIVED DEC 05 2011

Insured Mail  Express Mail  
 Return Receipt for Merchandise  
 C.O.D.

4. Restricted Delivery? (Extra Fee)  Yes

2. Article Number  
(Transfer from service label)

7004 0750 0000 6583 5114

PS Form 3811, February 2004

Domestic Return Receipt

102595-02-M-1540

**SENDER: COMPLETE THIS SECTION**

- Complete items 1, 2, and 3. Also complete item 4 if Restricted Delivery is desired.
- Print your name and address on the reverse so that we can return the card to you.
- Attach this card to the back of the mailpiece, or on the front if space permits.

1. Article Addressed to:

City Livermore  
 650 California Street, #18  
 San Francisco, CA 94108

**COMPLETE THIS SECTION ON DELIVERY**

A. Signature  Agent  
 X *[Signature]*  Addressee

B. Received by (Printed Name) C. Date of Delivery  
 12/2/11

D. Is delivery address different from item 1?  Yes  
 If YES, enter delivery address below:  No

RECEIVED DEC 05 2011

Insured Mail  Express Mail  
 Return Receipt for Merchandise  
 C.O.D.

4. Restricted Delivery? (Extra Fee)  Yes

2. Article Number  
(Transfer from service label)

7004 0750 0000 6583 5183

PS Form 3811, February 2004

Domestic Return Receipt

102595-02-M-1540

**SENDER: COMPLETE THIS SECTION**

- Complete items 1, 2, and 3. Also complete item 4 if Restricted Delivery is desired.
- Print your name and address on the reverse so that we can return the card to you.
- Attach this card to the back of the mailpiece, or on the front if space permits.

1. Article Addressed to:

Springtown Association  
 931 Larkspur Drive  
 Livermore, CA 94551

**COMPLETE THIS SECTION ON DELIVERY**

A. Signature  Agent  
*Rebecca Mathers*  Addressee

B. Received by (Printed Name) *Rebecca Mathers*

C. Date of Delivery *DEC 05 2011*

D. Is delivery address different from item 1?  Yes  
 If YES, enter delivery address below:  No

Mail  Express Mail  
 Return Receipt for Merchandise  
 Insured Mail  C.O.D.

4. Restricted Delivery? (Extra Fee)  Yes

2. Article Number

(Transfer from service label)

7004 0750 0000 6583 5077

PS Form 3811, February 2004

Domestic Return Receipt

102595-02-M-1541

**SENDER: COMPLETE THIS SECTION**

- Complete items 1, 2, and 3. Also complete item 4 if Restricted Delivery is desired.
- Print your name and address on the reverse so that we can return the card to you.
- Attach this card to the back of the mailpiece, or on the front if space permits.

1. Article Addressed to:

Southland Corporation  
 PO Box 711  
 Dallas, TX 75221

**COMPLETE THIS SECTION ON DELIVERY**

A. Signature  Agent  
*James Martin*  Addressee

B. Received by (Printed Name) *James Martin*

C. Date of Delivery *12-6-11*

D. Is delivery address different from item 1?  Yes  
 If YES, enter delivery address below:  No

Mail  Express Mail  
 Return Receipt for Merchandise  
 Insured Mail  C.O.D.

4. Restricted Delivery? (Extra Fee)  Yes

2. Article Number

(Transfer from service label)

7004 0750 0000 6583 5213

PS Form 3811, February 2004

Domestic Return Receipt

102595-02-M-1541

**SENDER: COMPLETE THIS SECTION**

- Complete items 1, 2, and 3. Also complete item 4 if Restricted Delivery is desired.
- Print your name and address on the reverse so that we can return the card to you.
- Attach this card to the back of the mailpiece, or on the front if space permits.

1. Article Addressed to:

Resident  
 930 Springtown Blvd.  
 Livermore, CA 94551

**COMPLETE THIS SECTION ON DELIVERY**

A. Signature  Agent  
*Lucretia Espinoza*  Addressee

B. Received by (Printed Name)

C. Date of Delivery *11/30/11*

D. Is delivery address different from item 1?  Yes  
 If YES, enter delivery address below:  No

Mail  Express Mail  
 Return Receipt for Merchandise  
 Insured Mail  C.O.D.

4. Restricted Delivery? (Extra Fee)  Yes

2. Article Number

(Transfer from service label)

7004 0750 0000 6583 5190

PS Form 3811, February 2004

Domestic Return Receipt

102595-02-M-1540



SENDER: COMPLETE THIS SECTION	COMPLETE THIS SECTION ON DELIVERY	
<ul style="list-style-type: none"> <li>Complete items 1, 2, and 3. Also complete item 4 if Restricted Delivery is desired.</li> <li>Print your name and address on the reverse so that we can return the card to you.</li> <li>Attach this card to the back of the mailpiece, or on the front if space permits.</li> </ul>	A. Signature <input checked="" type="checkbox"/> <i>[Signature]</i>	
	<input type="checkbox"/> Agent <input type="checkbox"/> Addressee	
1. Article Addressed to:	B. Received by (Printed Name)	C. Date of Delivery
	<input type="checkbox"/> Yes <input type="checkbox"/> No	
D. Is delivery address different from item 1? If YES, enter delivery address below:	<input type="checkbox"/> Yes <input type="checkbox"/> No	
Resident 4655 Lassen Road Livermore, CA 94551	RECEIVED DEC 05 2011	
	Mail <input type="checkbox"/> Express Mail <input type="checkbox"/> Return Receipt for Merchandise <input type="checkbox"/> C.O.D.	
	4. Restricted Delivery? (Extra Fee) <input type="checkbox"/> Yes	
2. Article Number (Transfer from service label)	7004 0750 0000 6583 5176	
PS Form 3811, February 2004	Domestic Return Receipt	102595-02-M-1544

SENDER: COMPLETE THIS SECTION	COMPLETE THIS SECTION ON DELIVERY	
<ul style="list-style-type: none"> <li>Complete items 1, 2, and 3. Also complete item 4 if Restricted Delivery is desired.</li> <li>Print your name and address on the reverse so that we can return the card to you.</li> <li>Attach this card to the back of the mailpiece, or on the front if space permits.</li> </ul>	A. Signature <input checked="" type="checkbox"/> <i>V. Blewins</i>	
	<input type="checkbox"/> Agent <input type="checkbox"/> Addressee	
1. Article Addressed to:	B. Received by (Printed Name)	C. Date of Delivery
	<input type="checkbox"/> Yes <input type="checkbox"/> No	
D. Is delivery address different from item 1? If YES, enter delivery address below:	<input type="checkbox"/> Yes <input type="checkbox"/> No	
Glasjar Property LLC 2295 Corporate Blvd. #222 Boca Raton, FL 33431	RECEIVED DEC 05 2011	
	Mail <input type="checkbox"/> Express Mail <input type="checkbox"/> Return Receipt for Merchandise <input type="checkbox"/> C.O.D.	
	4. Restricted Delivery? (Extra Fee) <input type="checkbox"/> Yes	
2. Article Number (Transfer from service label)	7004 0750 0000 6583 5121	
PS Form 3811, February 2004	Domestic Return Receipt	102595-02-M-1544

SENDER: COMPLETE THIS SECTION	COMPLETE THIS SECTION ON DELIVERY	
<ul style="list-style-type: none"> <li>Complete items 1, 2, and 3. Also complete item 4 if Restricted Delivery is desired.</li> <li>Print your name and address on the reverse so that we can return the card to you.</li> <li>Attach this card to the back of the mailpiece, or on the front if space permits.</li> </ul>	A. Signature <input checked="" type="checkbox"/> <i>[Signature]</i>	
	<input type="checkbox"/> Agent <input type="checkbox"/> Addressee	
1. Article Addressed to:	B. Received by (Printed Name)	C. Date of Delivery
	<input type="checkbox"/> Yes <input type="checkbox"/> No	
D. Is delivery address different from item 1? If YES, enter delivery address below:	<input type="checkbox"/> Yes <input type="checkbox"/> No	
D Springtown LLC PO Box 225245 San Francisco, CA 94122	RECEIVED DEC 05 2011	
	Mail <input type="checkbox"/> Express Mail <input type="checkbox"/> Return Receipt for Merchandise <input type="checkbox"/> Insured Mail <input type="checkbox"/> C.O.D.	
	4. Restricted Delivery? (Extra Fee) <input type="checkbox"/> Yes	
2. Article Number (Transfer from service label)	7004 0750 0000 6583 5206	
PS Form 3811, February 2004	Domestic Return Receipt	102595-02-M-1544

**SENDER: COMPLETE THIS SECTION**

- Complete items 1, 2, and 3. Also complete item 4 if Restricted Delivery is desired.
- Print your name and address on the reverse so that we can return the card to you.
- Attach this card to the back of the mailpiece, or on the front if space permits.

1. Article Addressed to:

KC Propco LLC  
 2601 S Bayshore Drive, #9  
 Coconut Grove, FL 33133

**COMPLETE THIS SECTION ON DELIVERY**

A. Signature X <i>J. Williams</i>		<input type="checkbox"/> Agent <input type="checkbox"/> Addressee
B. Received by (Printed Name) <i>J. Williams</i>	C. Date of Delivery <i>12/1/11</i>	
D. Is delivery address different from item 1? <input type="checkbox"/> Yes If YES, enter delivery address below: <input type="checkbox"/> No		

RECEIVED DEC 05 2011

Mail  Express Mail  
 Return Receipt for Merchandise  
 Insured Mail  C.O.D.

4. Restricted Delivery? (Extra Fee)  Yes

2. Article Number  
(Transfer from service label)

7004 0750 0000 6583 5169

PS Form 3811, February 2004

Domestic Return Receipt

102595-02-M-1540



**Geological Technics Inc.**  
 1172 Kansas Avenue  
 Modesto, CA 95351  
 (209) 522-4119 / fax (209) 522-4227  
 gti@gtienv.com

**CERTIFIED MAIL™**



7004 0750 0000 6583 5107



Resident  
 4673 Lassen Road  
 Livermore, CA 94551

*REFUSED* RECEIVED DEC 13 2011

REF

9455181461 0036



**Geological Technics Inc.**  
 1172 Kansas Avenue  
 Modesto, CA 95351  
 (209) 522-4119 / fax (209) 522-4227  
 gti@gtienv.com

**CERTIFIED MAIL™**



7004 0750 0000 6583 5060



Spring Valley  
 2483 E Bayshore Road, #102  
 Palo Alto, CA 94303

RECEIVED DEC 08 2011

NIXIE 941 DE 1 06 12/04/11

RETURN TO SENDER  
 NOT DELIVERABLE AS ADDRESSED  
 UNABLE TO FORWARD

BC: 95351152672 \*1772-10310-29-45

94303 95351 0036

