



TRANSMITTAL

DATE: August 1, 1995

PROJECT #: 81-0429

TO: Juliet Shin

PHONE:

COMPANY: Alameda County Department of Environmental Health
1131 Harbor Bay Pkwy Suite 250
Alameda, CA 94502-6577

FAX:

FROM: Joyce Adams, 450-6162

SUBJECT: 2160 Otis Drive, Alameda

55 AUG -2 PM 2:47
ENVIRONMENTAL
PROFESSIONAL

VIA: FAX: AS: FOR:
Fax # of pages: Per our phone call Your information
1st Class Mail (including this cover) You requested Return to you
Overnight Delivery Hard Copy to follow Is required Your action
UPS (Surface) We believe you may Your review &
Courier be interested comments

Please call (510) 450-6000 if there are any problems with transmission.

COMMENTS:

Ms. Shin,

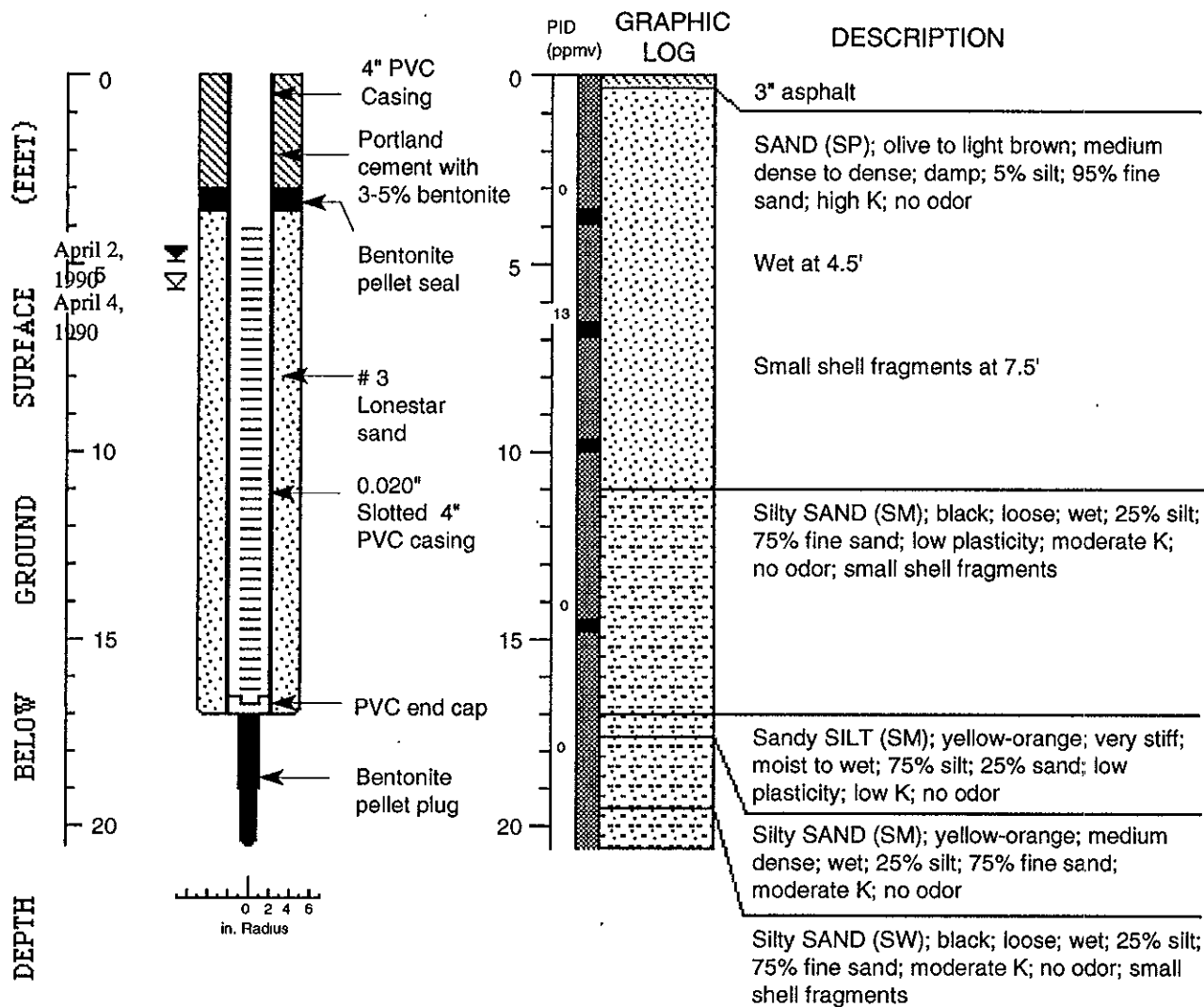
Here are the well logs for MW-1 and MW-2 that you requested from Tom Fojut. We have looked for the Unauthorized release form and any documentation on the waste oil tank and have not come up with anything as of yet. We will continue to look. Also if these forms have already been supplied to the state wouldn't that be sufficient? Please call me if you have any questions.

Thank You
Joyce

FAX CONFIDENTIALITY NOTICE

The information contained in this transmission is confidential and only intended for the addressee. If you are not the intended recipient, you are hereby notified that any disclosure, copying, distribution or action taken in reliance on the contents of this facsimile transmittal is strictly prohibited. If you have received this facsimile in error, please call us immediately to arrange for the return of these documents.

WELL MW-1 (BH-A)



EXPLANATION

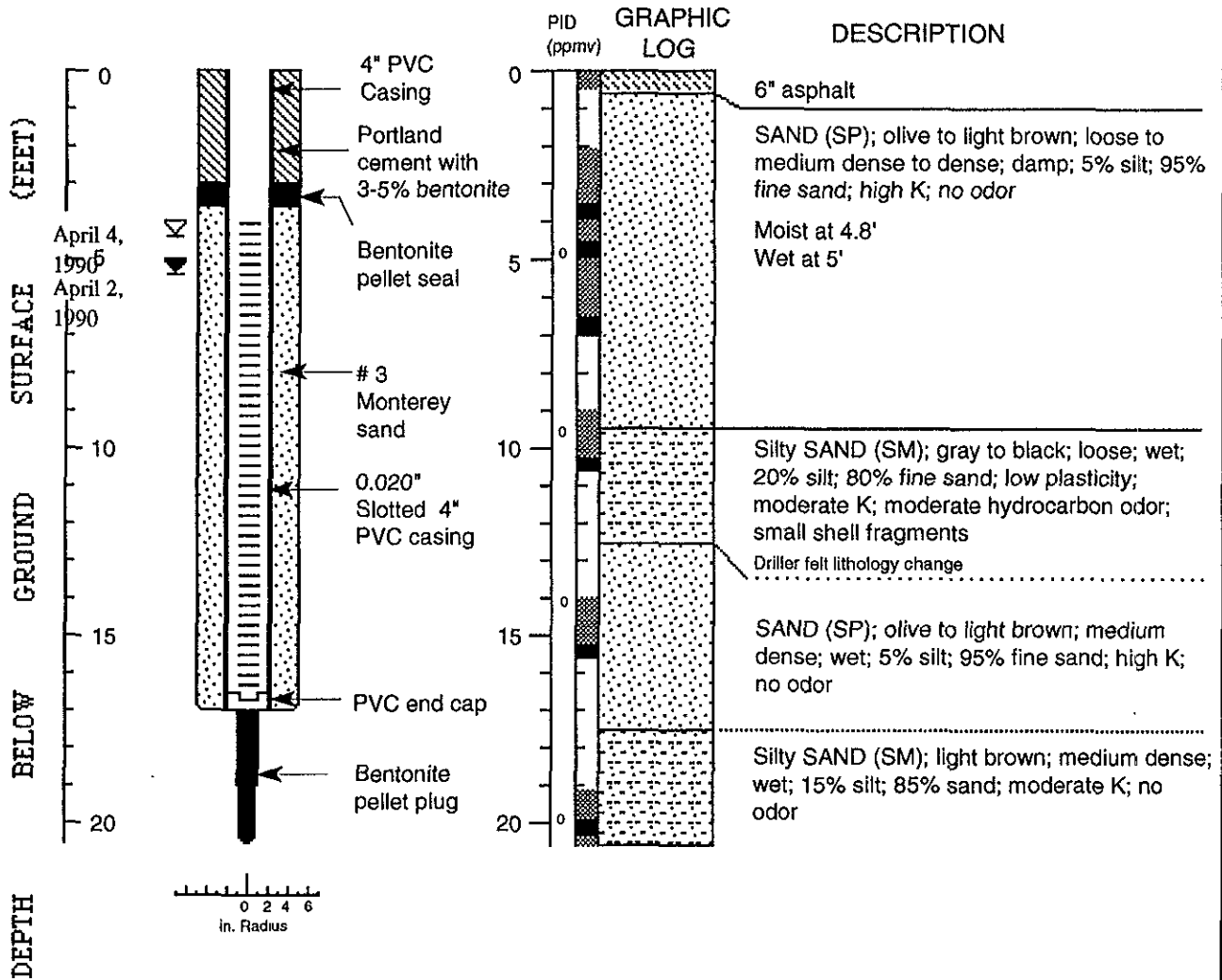
- Water level during drilling (date)
- Water level (date)
- Contact (dotted where approx.)
- Uncertain contact
- Location of recovered drive sample
- Location of drive sample sealed for chemical analysis
- Cutting sample
- K = Estimated hydraulic conductivity

Logged by: Robert Kitay
 Supervisor: Richard Weiss; EG 1112
 Drilling Company: Soil Exploration Services
 Driller: Russ Ellis
 Drilling Method: Hollow stem auger
 Date Drilled: April 2, 1990
 Well Head Completion: Locking 4" plug, traffic-rated vault
 Type of sampler: Split-barrel (2.0")
 Ground Surface Elevation: 6.47 ft above msl

Well Construction and Boring Log - Well MW-1 (BH-A)

Shell Service Station
 2160 Otis Drive
 Alameda, California

WELL MW-2 (BH-B)



EXPLANATION

- Water level during drilling (date)
- Water level (date)
- Contact (dotted where approx.)
- Uncertain contact
- Location of recovered drive sample
- Location of drive sample sealed for chemical analysis
- Cutting sample
- K** = Estimated hydraulic conductivity

Logged by: Robert Kitay
 Supervisor: Richard Weiss; EG 1112
 Drilling Company: Soil Exploration Services
 Driller: Russ Ellis
 Drilling Method: Hollow stem auger
 Date Drilled: April 2, 1990
 Well Head Completion: Locking 4" plug, traffic-rated vault
 Type of sampler: Split-barrel (2.0")
 Ground Surface Elevation: 4.01 ft above msl