

11/03/00

# HISTORICAL TIME-LINE

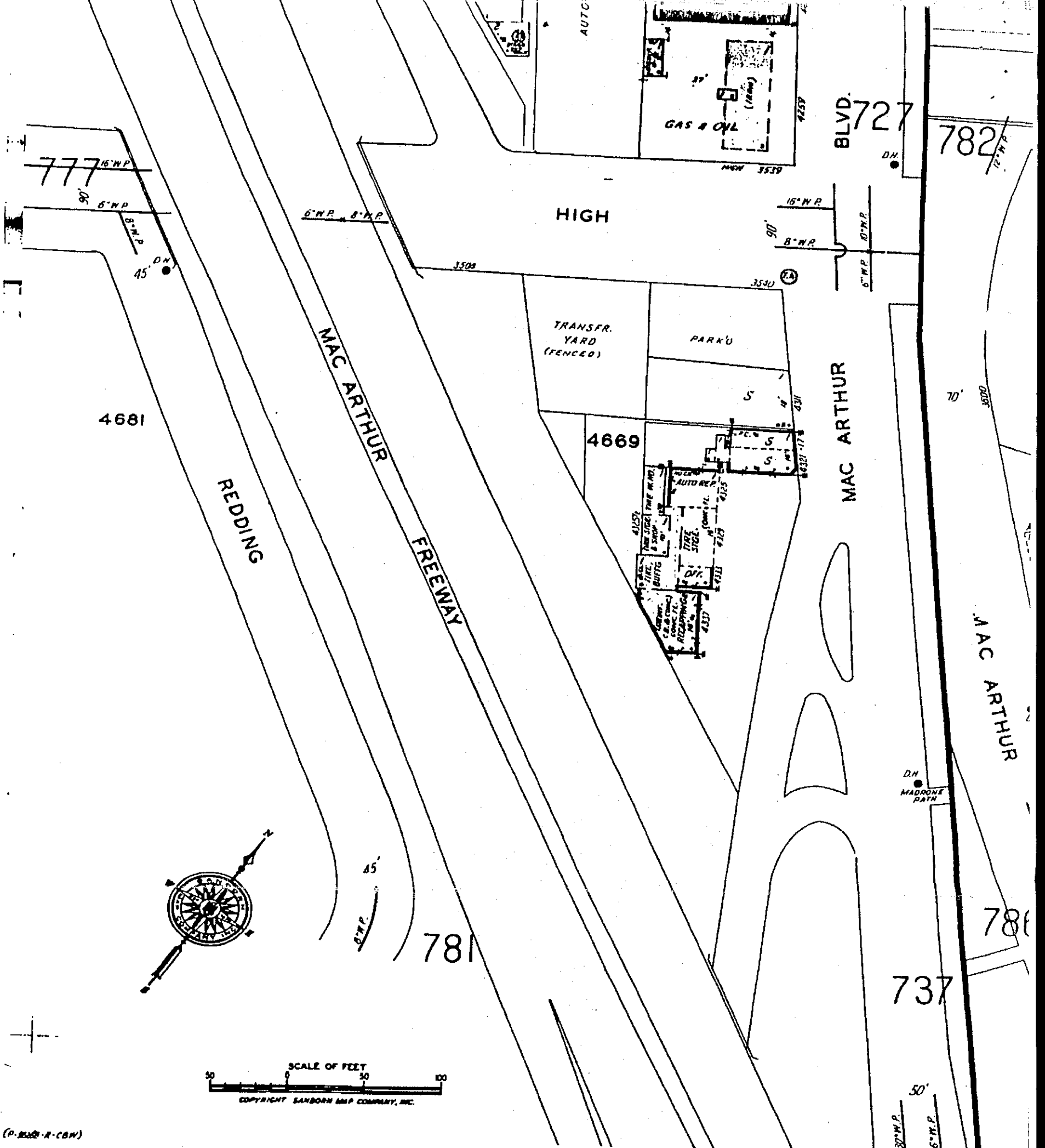
Alameda County

Date	Event	Exhibit	Comments
MAY 0 Mid 1920s	Charles E. Roberts, Sr. purchases the Property which is shown bordered in yellow on Caltrans Right of Way map.	A	Map
Early 1940s	CER, Sr. opens Roberts Service (gas station).	B	Advertisement
	CER, Sr. installs original USTs.	C	Photo
5/19/49	Charles E. Roberts, Sr. puts Property into a trust with the Central Bank located at 14th and Broadway in Oakland.	D	
12/17/49	Charles, Sr. sells the Tire and Battery Shop portion of "Roberts Coal Co. - Roberts Services Station" business to his son Clifford E. Roberts	E	Notice of Intended Sale
1955	Central Bank becomes part of First Western Bank & Trust. Property now held in trust with First Western.	F	
2/24/61	First Western Bank & Trust merges with United California Bank. Property now held in trust with United Californian.	G	
9/19/61	United California Bank grants that portion of the Property to State of CA (Caltrans) to make way for development of Highway 580.	H	Grant Deed
	Portion of Property taken by State is shown highlighted in blue on Exhibit A.	A	Map
2/28/66	United California Bank deeds Remaining Property to Clifford E. Roberts and his wife Ruth C. Roberts	J	Grant Deed
	Remaining Property which the Roberts still own is shown highlighted in orange on Exhibit A.	A	Map
10/29/68	State of CA (Caltrans) deeds to the City of Oakland that portion of the Caltrans Property which is shown highlighted in blue AND cross-hatched on Exhibit A.	J A	Grant Deed Map
1/30/76	Upon 12/23/74 death of Clifford E. Roberts, Remaining Property becomes sole ownership of Ruth C. Roberts, widow.	K	Decree
3/18/76	Ruth C. Roberts puts Remaining Property into a trust with United California Bank.	L	Grant Deed
1/7/97	United California Bank deeds Remaining Property back to Ruth C. Roberts	M	
7/11/2000	Death of Ruth C. Roberts activates Roberts Family Trust, and Glenn E. Roberts is named as Executor.		
11/3/2000	Entered into purchase agreement with Super Q LLC (Everett & Jones) Barbeque	N O	

## HISTORICAL TIME-LINE

Date	Event	Exhibit	Comments
Mid 1920s	Charles E. Roberts, Sr. purchases the Property which is shown bordered in yellow on Caltrans Right of Way map.	A	Map
Early 1940s	CER, Sr. opens Roberts Service (gas station).	B	Advertisement
	CER, Sr. installs original USTs.	C	Photo
5/19/49	Charles E. Roberts, Sr. puts Property into a trust with the Central Bank located at 14th and Broadway in Oakland.	D	
12/17/49	Charles, Sr. sells the Tire and Battery Shop portion of "Roberts Coal Co. - Roberts Services Station" business to his son Clifford E. Roberts	E	Notice of Intended Sale
1955	Central Bank becomes part of First Western Bank & Trust. Property now held in trust with First Western.	F	
2/24/61	First Western Bank & Trust merges with United California Bank. Property now held in trust with United Californian.	G	
9/19/61	United California Bank grants that portion of the Property to State of CA (Caltrans) to make way for development of Highway 580.	H	Grant Deed
	Portion of Property taken by State is shown highlighted in blue on Exhibit A.	A	Map
2/28/66	United California Bank deeds Remaining Property to Clifford E. Roberts and his wife Ruth C. Roberts	I	Grant Deed
	Remaining Property which the Roberts still own is shown highlighted in orange on Exhibit A.	A	Map
10/29/68	State of CA (Caltrans) deeds to the City of Oakland that portion of the Caltrans Property which is shown highlighted in blue AND cross-hatched on Exhibit A.	J	Grant Deed
		A	Map
1/30/76	Upon 12/23/74 death of Clifford E. Roberts, Remaining Property becomes sole ownership of Ruth C. Roberts, widow.	K	Decree
3/18/76	Ruth C. Roberts puts Remaining Property into a trust with United California Bank.	L	Grant Deed
1/7/97	United California Bank deeds Remaining Property back to Ruth C. Roberts	M	
7/11/2000	Death of Ruth C. Roberts activates Roberts Family Trust, and Glenn E. Roberts is named as Executor.		
11/3/2000	Entered into purchase agreement with Super Q LLC (Everett & Jones) Barbeque	N O	





(P. 1520-R-CBM)

72

**The Sanborn Library, LLC**  
 This Sanborn Map™ is a certified copy produced by Environmental Data Resources, Inc. under arrangement with The Sanborn Library, LLC. Information on this Sanborn™ Map is derived from Sanborn field surveys conducted in

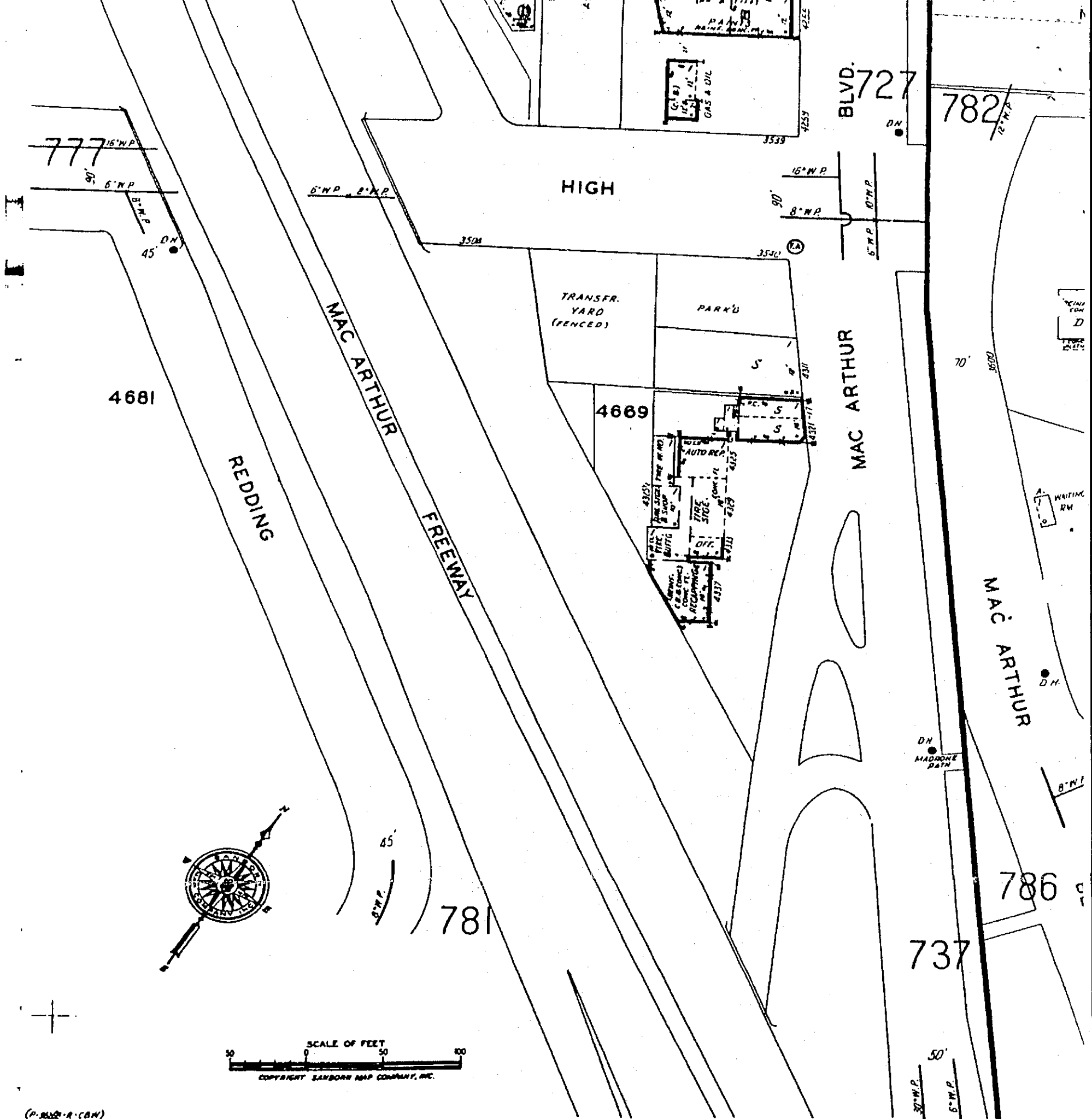
Copyright © The Sanborn Library, LLC  
 Year 1968  
 EDR 044001 P. 1520-R-CBM

1968

Copyright © The Sanborn Library, LLC. All rights reserved. No part of this map may be reproduced or transmitted in any form or by any means, electronic or mechanical, including photocopying, recording, or by any information storage and retrieval system, without permission in writing from The Sanborn Library, LLC.

KAG





(P-852-R-CBM)



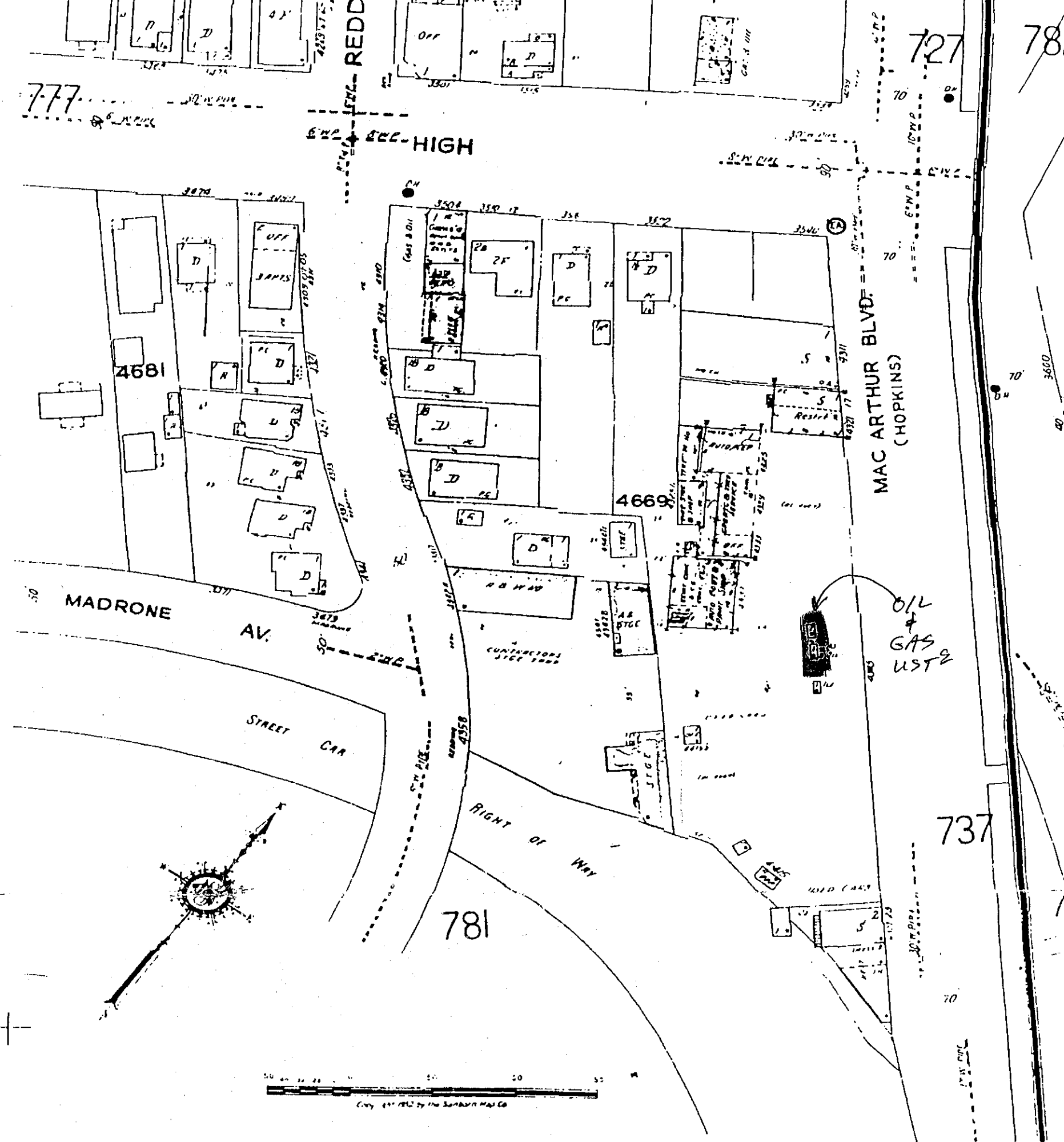
**The Sanborn Library, LLC**

This Sanborn Map™ is a certified copy produced by Environmental Data Resources, Inc. under arrangement with The Sanborn Library, LLC. Information on this Sanborn™ Map is derived from Sanborn field surveys conducted in

Copyright © The Sanborn Library, LLC 1966

KAG

Information in whole or in part of any map of The Sanborn Library, LLC may be prohibited without prior written permission from The Sanborn Library, LLC.



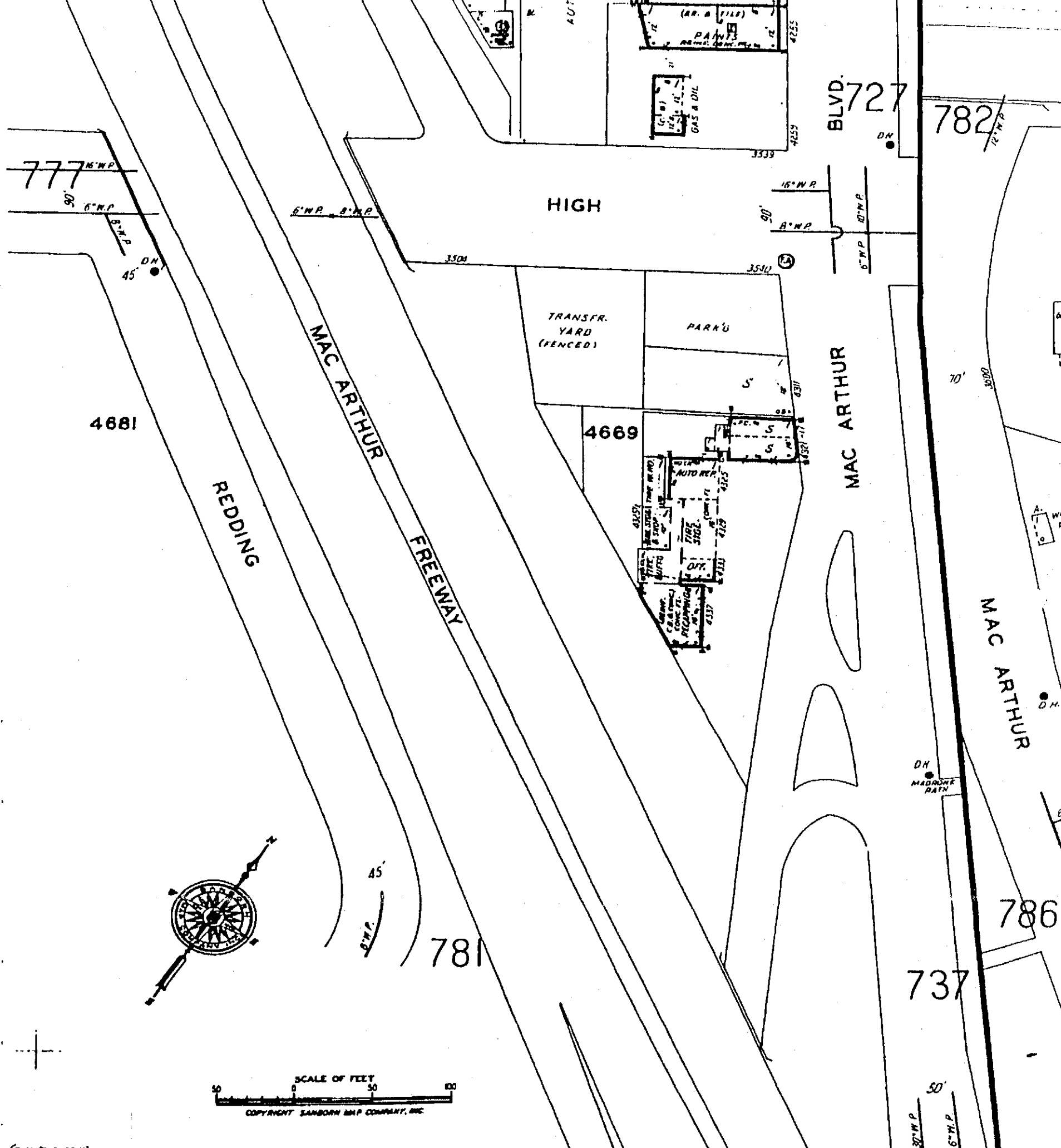
**The Sanborn Library, LLC**

This Sanborn Map™ is a certified copy produced by Environmental Data Resources, Inc. under arrangement with The Sanborn Library, LLC. Information on this Sanborn™ Map is derived from Sanborn field surveys conducted in

1957

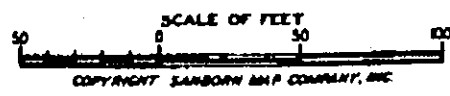
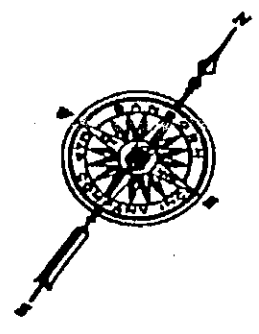
KAG

© 1957 Environmental Data Resources, Inc. All rights reserved. This map is a reproduction of the original Sanborn fire insurance map. It is not to be used for any other purpose without the express written permission of Environmental Data Resources, Inc.



(P. 1221-A-CAN)

56



**The Sanborn Library, LLC**

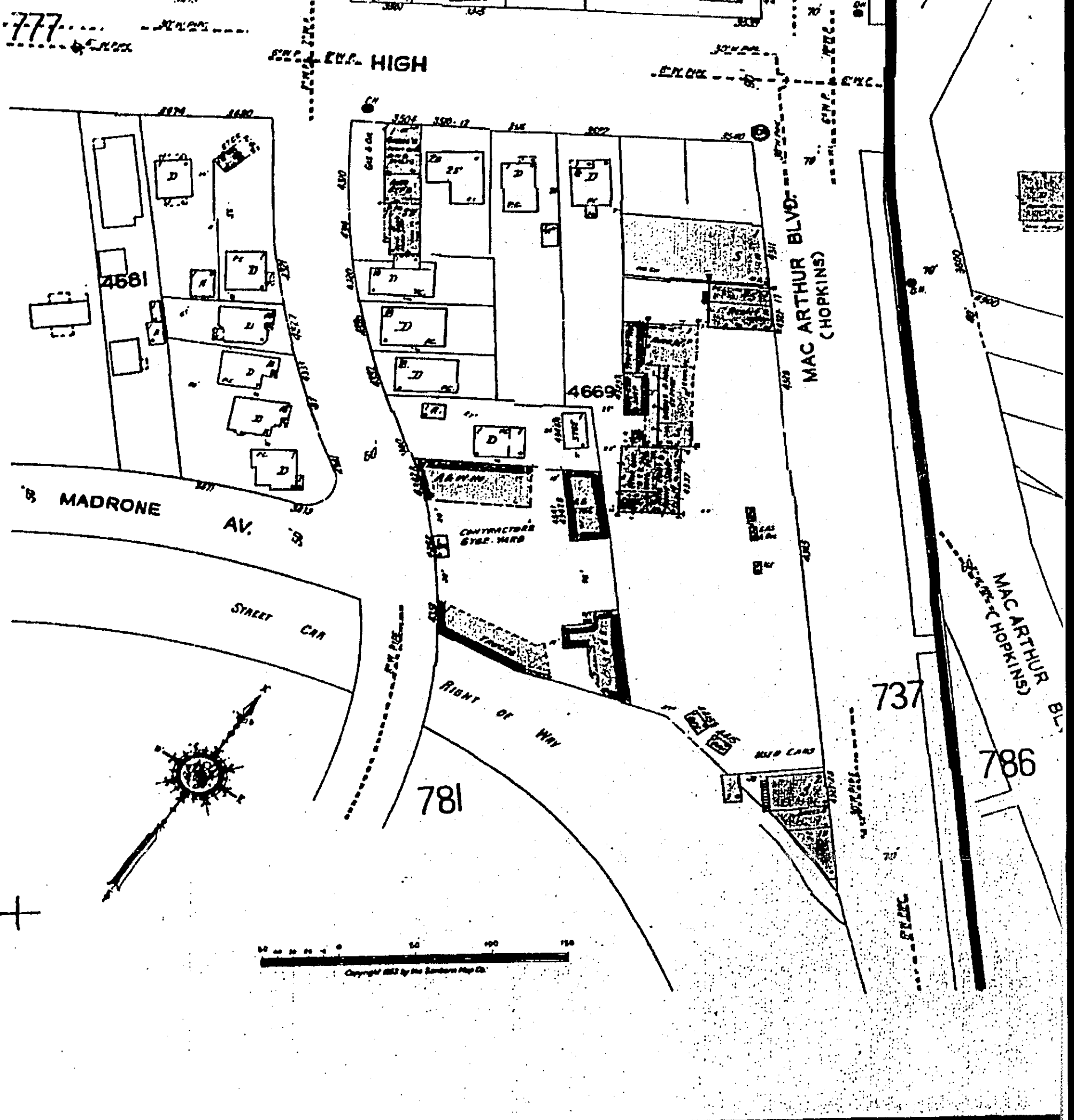
This Sanborn Map is a certified copy produced by Environmental Data Resources, Inc. under arrangement with The Sanborn Library, LLC. Information on this Sanborn Map is derived from Sanborn field surveys conducted in

Copyright © 1965 The Sanborn Library, LLC  
1965

KAG

No production in whole or in part of any map of the Sanborn Library, LLC may be produced without prior written permission from The Sanborn Library, LLC.





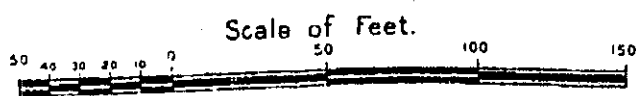
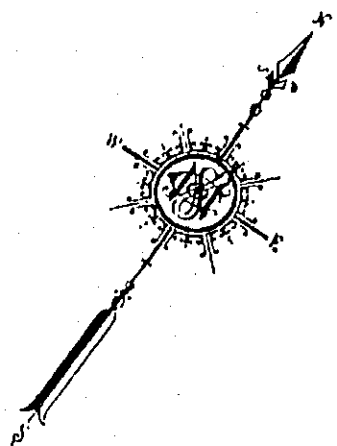
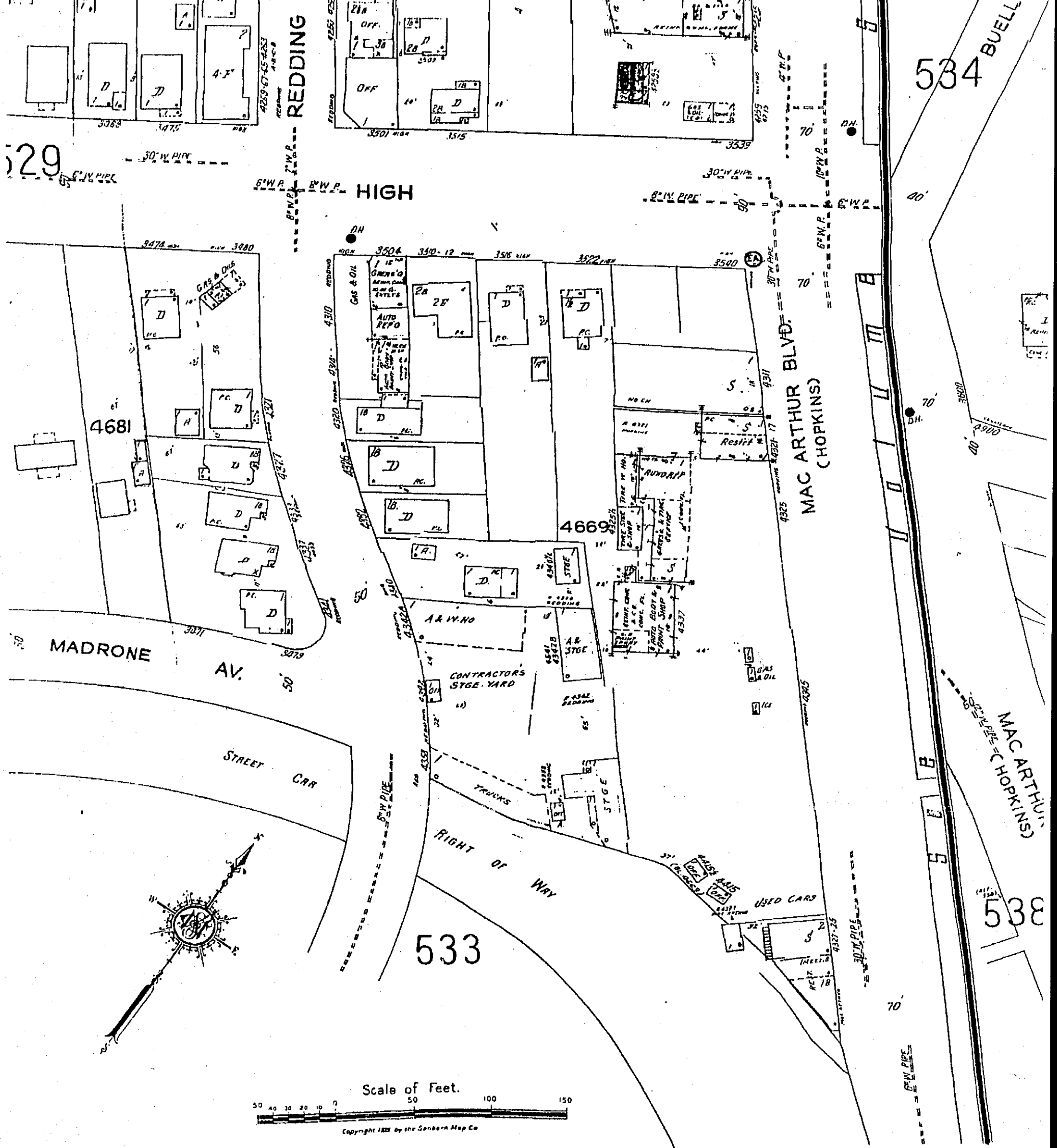
**The Sanborn Library, LLC**

This Sanborn Map™ is a certified copy produced by Environmental Data Resources, Inc. under arrangement with The Sanborn Library, LLC. Information on this Sanborn™ Map is derived from Sanborn field surveys conducted in

Copyright © The Sanborn Library, LLC  
 Year 1952  
 FOR BAKER & ASSOCIATES

KAG

Reproduction in whole or in part of any map of The Sanborn Library, LLC may be prohibited without prior permission from The Sanborn Library, LLC.

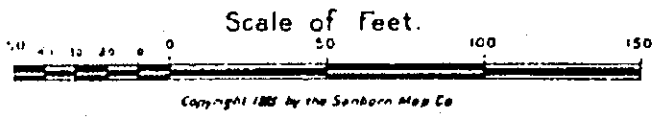
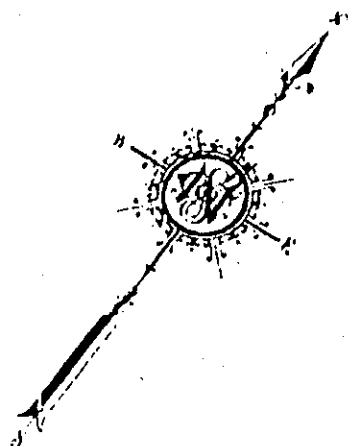
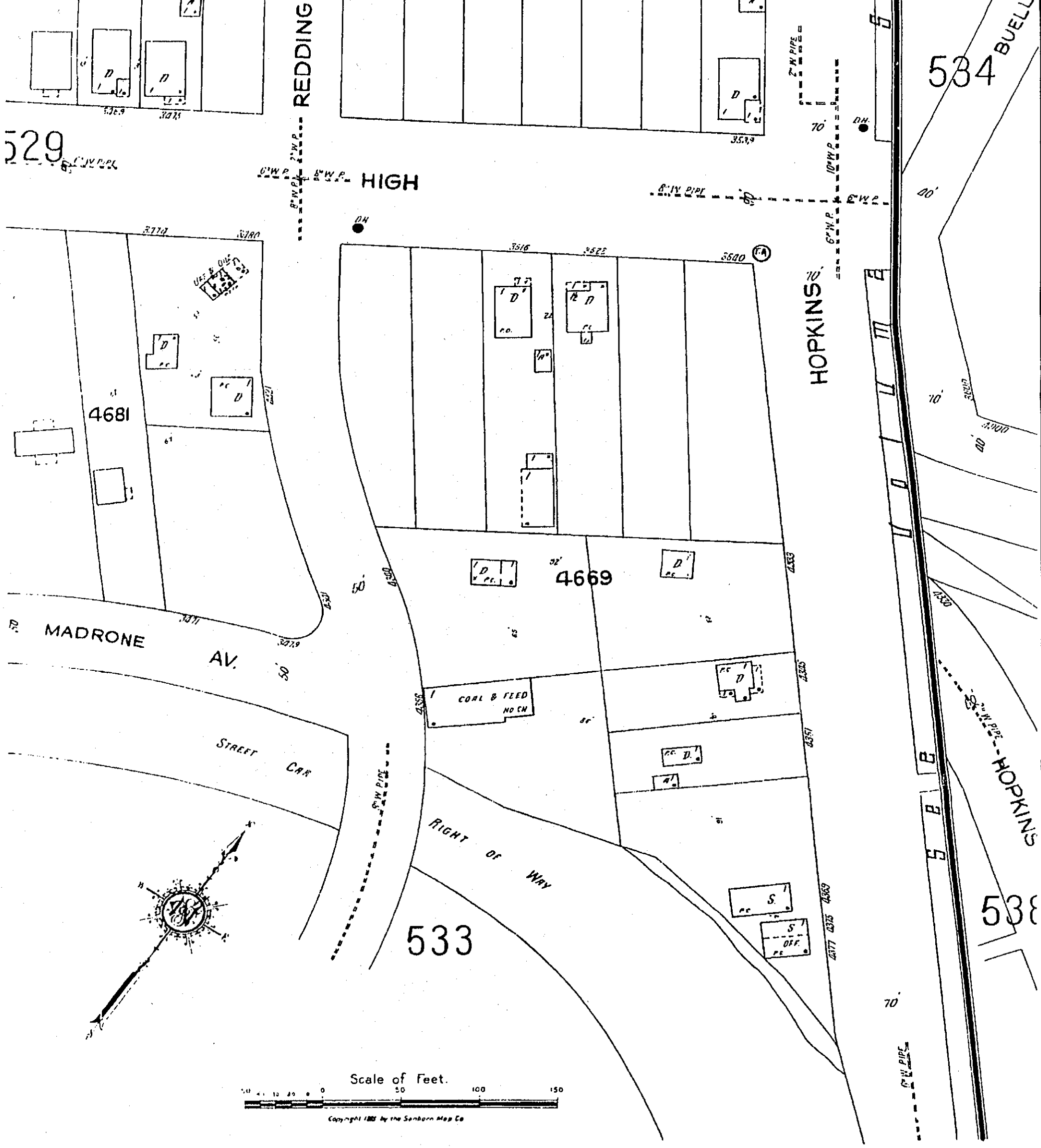


Copyright 1950 by the Sanborn Map Co

**The Sanborn Library, LLC**  
 This Sanborn Map™ is a certified copy produced by Environmental Data Resources, Inc. under arrangement with The Sanborn Library, LLC. Information on this Sanborn™ Map is derived from Sanborn field surveys conducted in  
 Year: 1950  
 Copyright © The Sanborn Library, LLC  
 FOR RESEARCH ASSOCIATION

KAG

Reproduction in whole or in part of any map of The Sanborn Library, LLC may be prohibited without prior written permission from The Sanborn Library, LLC.



Copyright 1982 by the Sanborn Map Co



**The Sanborn Library, LLC**

This Sanborn Map™ is a certified copy produced by Environmental Data Resources, Inc. under arrangement with The Sanborn Library, LLC. Information on this Sanborn™ Map is derived from Sanborn field surveys conducted in

Copyright © The Sanborn Library, LLC  
 Year 1925  
 FOR REPRODUCTION

KAG

Reproduction in whole or in part of any map of The Sanborn Library, LLC may be prohibited without prior written permission from The Sanborn Library, LLC.

4667

AV.

4668

MAYBELLE

533

REDDING

4674

4675

QUIGLEY

4679

4680

NO CO.  
R. C. CHU  
NO MEASUREMENTS  
NO SERVICES  
17-23

Scale of Feet.

PORTER

532

VALENTINE



**The Sanborn Library, LLC**

This Sanborn Map is a certified copy produced by Environmental Data Resources, Inc. under arrangement with The Sanborn Library, LLC. Information on this Sanborn Map is derived from Sanborn field surveys conducted in

Copyright ©

The Sanborn Library, LLC

Year  
1912

FOR REPRODUCTION

KAG

Reproduction in whole or in part of any map of The Sanborn Library, LLC may be prohibited without prior written permission from The Sanborn Library, LLC.