



ROESSLER INVESTMENT GROUP

COMMERCIAL BROKERAGE

December 5, 2008

Steven Plunkett
Hazardous Materials Specialist
Alameda County Environmental Health
1131 Harbor Bay Parkway, Suite 250
Alameda, CA 94502-6577
email: steven.plunkett@acgov.org

RECEIVED

9:57 am, Dec 11, 2008

Alameda County
Environmental Health

Re: Smaller Montessori School
Case file #RO0002863 (Global ID# T06019764784)

Dear Steven,

I wanted to make sure you knew that the Montessori School contracted to a smaller space several months ago. They did so for economic reasons. Thus, most of the contamination areas that we previously located are no longer located in the Montessori school. I've attached a site plan showing where the contracted Montessori school is now located.

We are still awaiting your response to our work plan submittal.

This letter has been submitted electronically.

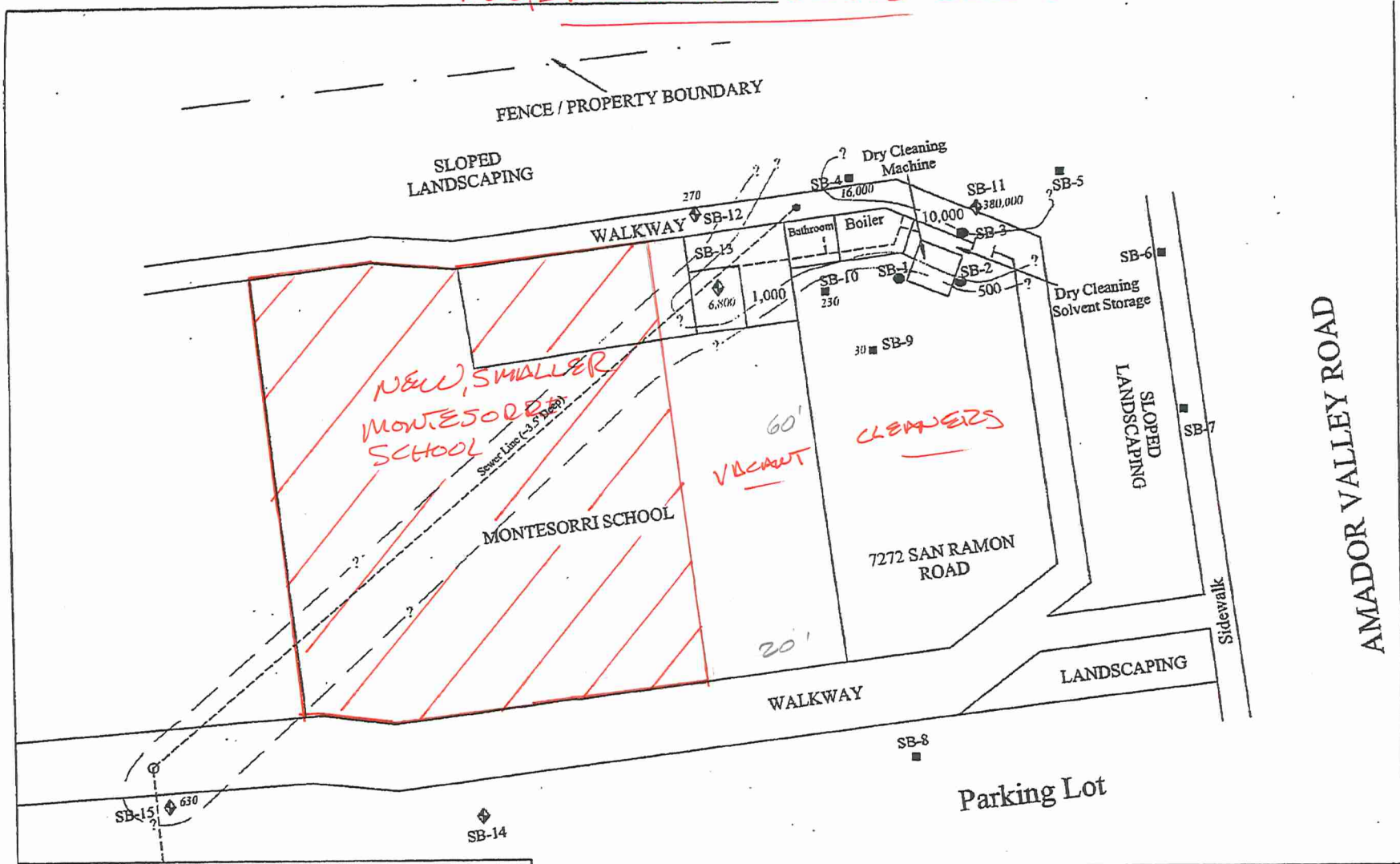
Very truly yours,



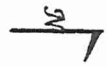
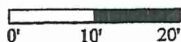
James A. Roessler
Roessler Investment Group
Phone: (415) 837-3722
Fax: (415) 837-3717
Email: Jim@roesslerinvestmentgroup.com

cc: Bruce Burrows
Karl Morthole
Bud Duke

NEW, SMALLER MONTESSORI SCHOOL



LEGEND:

- Soil Boring Locations (2/2-6/06)
 - Soil Boring Locations (01/27/05)
 - ◆ Soil Boring Locations (12/27/06 & 01/15/07)
 - Sewer Line
 - - - - - Property Boundary
- 

 1 INCH = 20 FEET

PCE - Tetrachloroethene
 *PCE value and isopleth concentrations in micrograms per cubic meter (ug/m³)

AEI CONSULTANTS 2500 CAMINO DIABLO BLVD, SUITE 200, WALNUT CREEK, CA	
PCE SOIL VAPOR ISOPLETH	
7272 SAN RAMON ROAD DUBLIN, CA 94568	FIGURE 9 PROJECT NO. 263294