

RO 2857

Meeting Attendance

11 AM Monday 7/22/2013

-1212

phone

Mark Jetterman	ACEH	510/567-6876
Tony Kershaw	Solano Group	510-524-8122
BOB CLARK-PIDDELL	PANGEN	510-475-8664
Duan Roe	ACEH	510-567-6767

EXPLANATION

- SS-6 ▲ Subslab Soil Gas Probe Location
- CSV-1 * Former Crawl Space Gas Probe Location
- Air Flow Direction in 2" Diameter PVC Pipe
- Subslab Air Flow Illustration
- 4" Diameter Slotted PVC for Air Inlet or Extraction
- 1,500 PCE Concentration in Subslab Gas ($\mu\text{g}/\text{m}^3$), July 2-3, 2013 (unless otherwise noted)
- 10,000 PCE Isoconcentration Contour ($\mu\text{g}/\text{m}^3$)
- 210 (ESL) Environmental Screening Level for Residential Land Use Established by SFRWQCB is $210 \mu\text{g}/\text{m}^3$

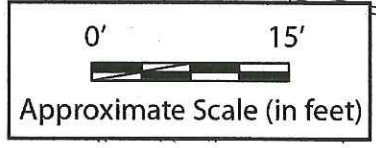
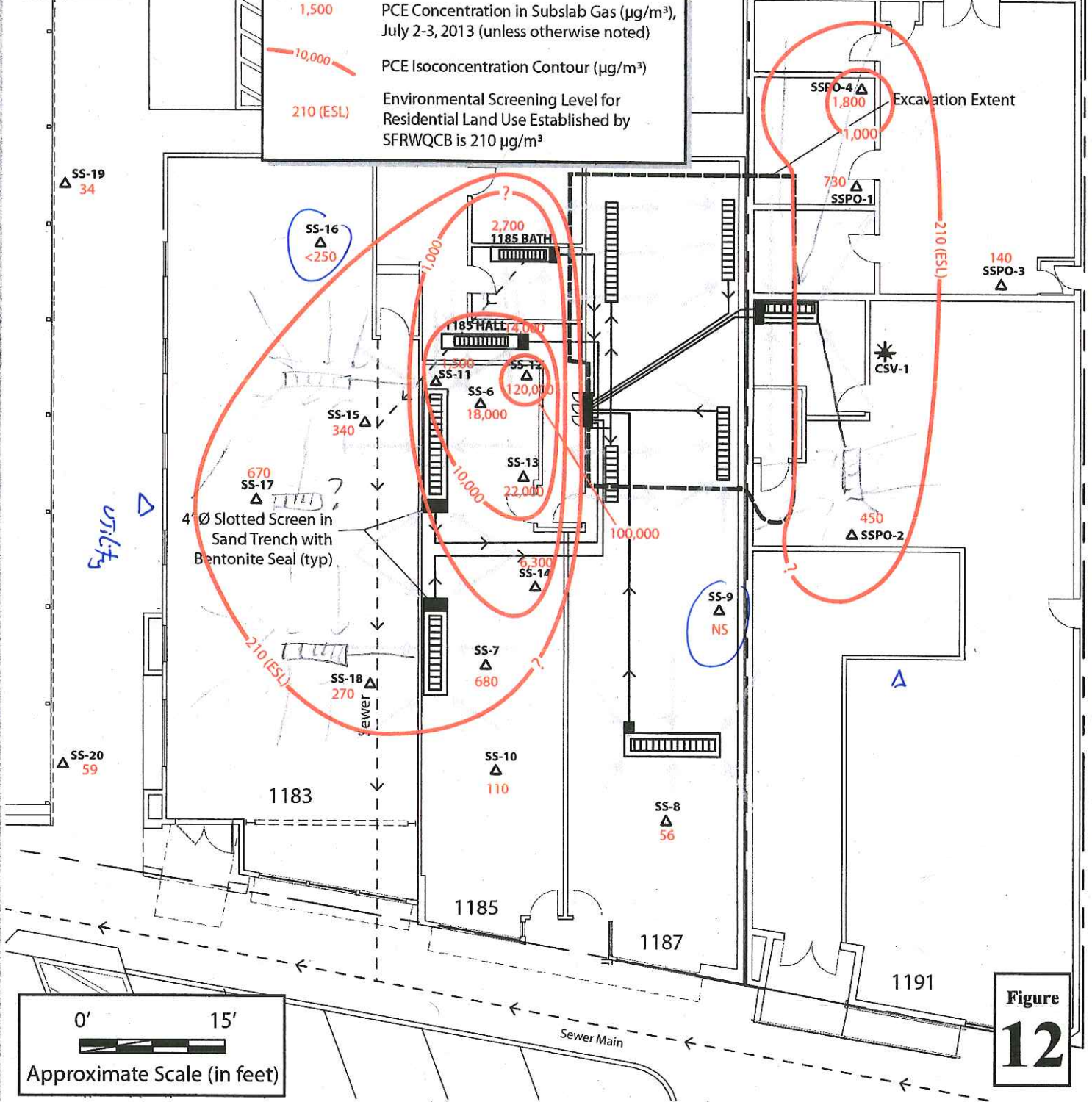
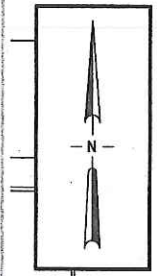


Figure
12

EXPLANATION

- | | | | |
|-------|---|------|--|
| MW-1 | Groundwater Monitoring Well | SS-3 | Destroyed Probe Location |
| CSV-1 | Crawl Space Gas Probe Location | ▲ | Proposed Soil Gas Probe Location |
| SS-6 | Subslab Soil Gas Probe Location | B-31 | Proposed Soil Boring Location |
| SG-1 | Soil Gas Probe Location | A-11 | Proposed Angled Soil Boring Location (sample location = ●) |
| B-1 | Soil Boring Location (Shallow) | | |
| GPA-1 | Soil Boring Location (Deep) | | |
| A-2 | Angled Soil Boring Location (sample location = ●) | | |

↑ ~10' North
GPA-3

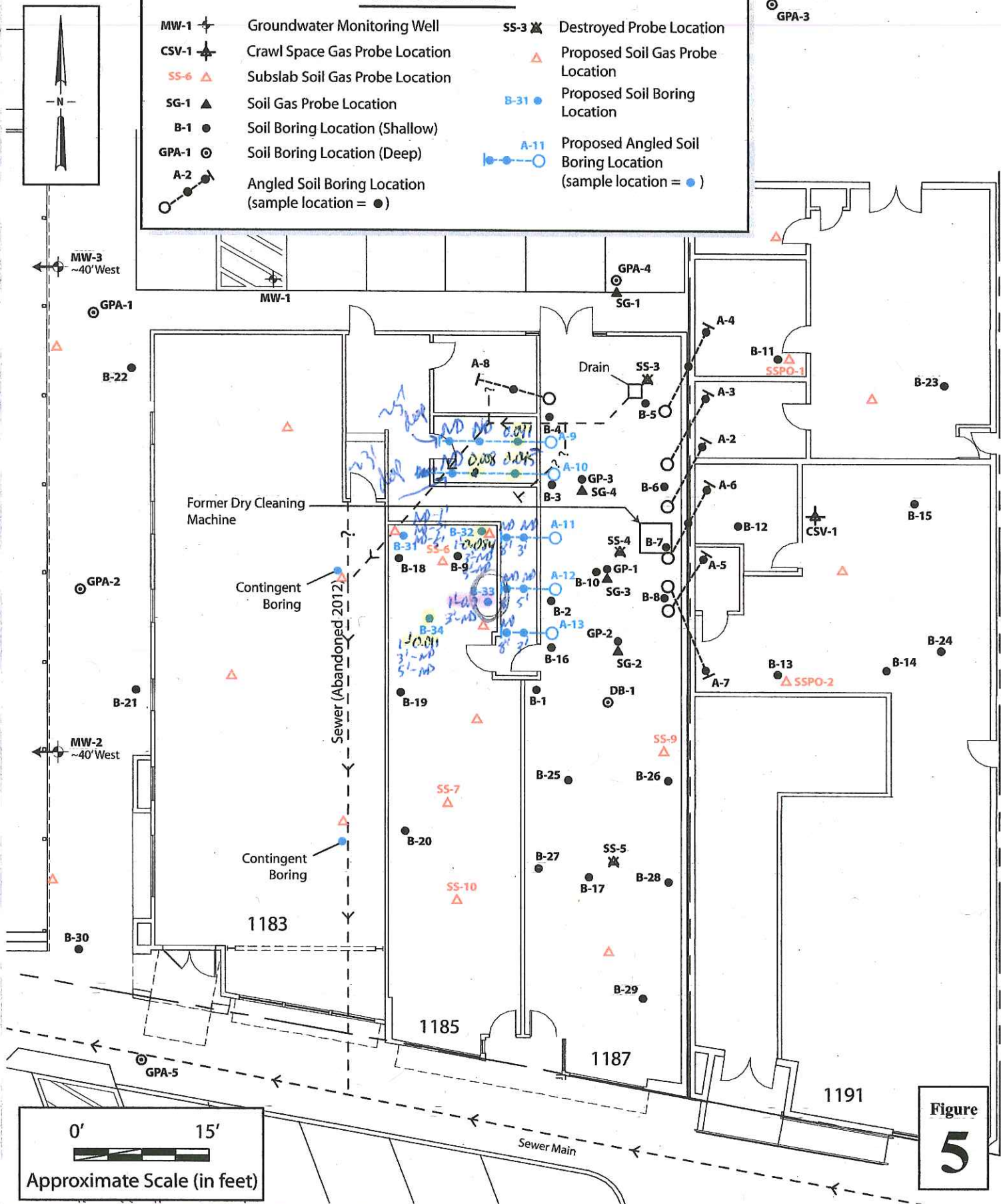


Figure
5