



**CONESTOGA-ROVERS
& ASSOCIATES**

5900 Hollis Street, Suite A
Emeryville, California 94608
Telephone: (510) 420-0700 Fax: (510) 420-9170
www.CRAworld.com

TRANSMITTAL

DATE: July 19, 2010 REFERENCE NO.: 240898
PROJECT NAME: 510 East 14th Street
(506-510 International Boulevard),
Oakland

TO: Jerry Wickham
Alameda County Environmental Health
1131 Harbor Bay Parkway, Suite 250
Alameda, California 94502-6577

RECEIVED
11:13 am, Jul 21, 2010
Alameda County
Environmental Health

Please find enclosed: Draft Final
 Originals Other
 Prints

Sent via: Mail Same Day Courier
 Overnight Courier Other GeoTracker and Alameda County FTP

QUANTITY	DESCRIPTION
1	Well Destruction Work Plan

As Requested For Review and Comment
 For Your Use _____

COMMENTS:
If you have any questions regarding the contents of this document, please call Peter Schaefer at (510) 420-3319.

Copy to: Denis Brown, Shell Oil Products US, (electronic copy)
SF Data Room (electronic copy)
Completed by: Peter Schaefer Signed: *Peter Schaefer*
Filing: Correspondence File



Jerry Wickham
Alameda County Environmental Health
1131 Harbor Bay Parkway, Suite 250
Alameda, California 94502-6577

Denis L. Brown
Shell Oil Products US
HSE – Environmental Services
20945 S. Wilmington Ave.
Carson, CA 90810-1039
Tel (707) 865 0251
Fax (707) 865 2542

Email denis.l.brown@shell.com

Re: Shell-branded Service Station
510 East 14th Street (506-510 International Boulevard)
Oakland, California
SAP Code 135695
Incident No. 97601734
ACEH Case No. RO0002853

Dear Mr. Wickham:

The attached document is provided for your review and comment. Upon information and belief, I declare, under penalty of perjury, that the information contained in the attached document is true and correct.

If you have any questions or concerns, please call me at (707) 865-0251.

Sincerely,

A handwritten signature in black ink, appearing to read "Denis Brown", is written over a horizontal line.

Denis L. Brown
Project Manager



WELL DESTRUCTION WORK PLAN

**SHELL-BRANDED SERVICE STATION
510 EAST 14TH STREET (506-510 INTERNATIONAL BOULEVARD)
OAKLAND, CALIFORNIA**

**SAP CODE 135695
INCIDENT NO. 97601734
AGENCY NO. RO0002853**

JULY 19, 2010
REF. NO. 240898 (7)
This report is printed on recycled paper.

**Prepared by:
Conestoga-Rovers
& Associates**

5900 Hollis Street, Suite A
Emeryville, California
U.S.A. 94608

Office: (510) 420-0700
Fax: (510) 420-9170

web: <http://www.CRAworld.com>

TABLE OF CONTENTS

	<u>Page</u>
1.0 INTRODUCTION	1
2.0 WORK TASKS	1
2.1 PERMIT	1
2.2 HEALTH AND SITE SAFETY PLAN (HASP)	1
2.3 UTILITY CLEARANCE	1
2.4 MONITORING WELL DESTRUCTION	1
2.5 REPORT PREPARATION	2
3.0 SCHEDULE.....	2

LIST OF FIGURES
(Following Text)

FIGURE 1 VICINITY MAP

FIGURE 2 SITE PLAN

LIST OF APPENDICES

APPENDIX A WELL LOGS

1.0 INTRODUCTION

Conestoga-Rovers & Associates (CRA) prepared this work plan on behalf of Equilon Enterprises LLC dba Shell Oil Products US (Shell). The proposed well destructions are required for final case closure per Alameda County Environmental Health's (ACEH's) June 11, 2010 letter.

The subject site is an active Shell-branded service station located on the east corner of the International Boulevard (formerly East 14th Street) and 5th Avenue intersection in a mixed commercial and residential area of Oakland, California (Figure 1). The site layout (Figure 2) includes one station building, three dispenser islands, and three underground storage tanks (USTs).

2.0 WORK TASKS

2.1 PERMIT

CRA will obtain an appropriate permit from Alameda County Public Works Agency.

2.2 HEALTH AND SITE SAFETY PLAN (HASP)

CRA will prepare a HASP to protect site workers. The plan will be kept on site during field activities and will be reviewed and signed by each site worker.

2.3 UTILITY CLEARANCE

CRA will mark the well locations, and the locations will be cleared through Underground Service Alert and a private line locator prior to removing the well boxes.

2.4 MONITORING WELL DESTRUCTION

CRA proposes to properly destroy five monitoring wells (MW-1 through MW-5). The wells will be destroyed by backfilling with neat cement under pressure (pressure grouting). The well vaults will be removed, and the surface pavement patched with concrete to match the surrounding grade. CRA includes the well logs in Appendix A.

The proposed scope of work will be performed under the supervision of a professional geologist or engineer.

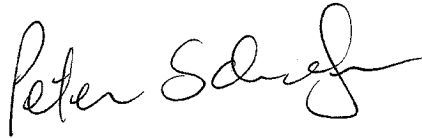
2.5 REPORT PREPARATION

Following completion of the well destructions, CRA will submit a brief report documenting the activities.

3.0 SCHEDULE

CRA will implement the well destructions upon receipt of the appropriate permit and will provide ACEH a report detailing the well destructions by September 28, 2010.

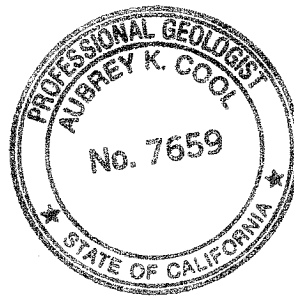
All of Which is Respectfully Submitted,
CONESTOGA-ROVERS & ASSOCIATES



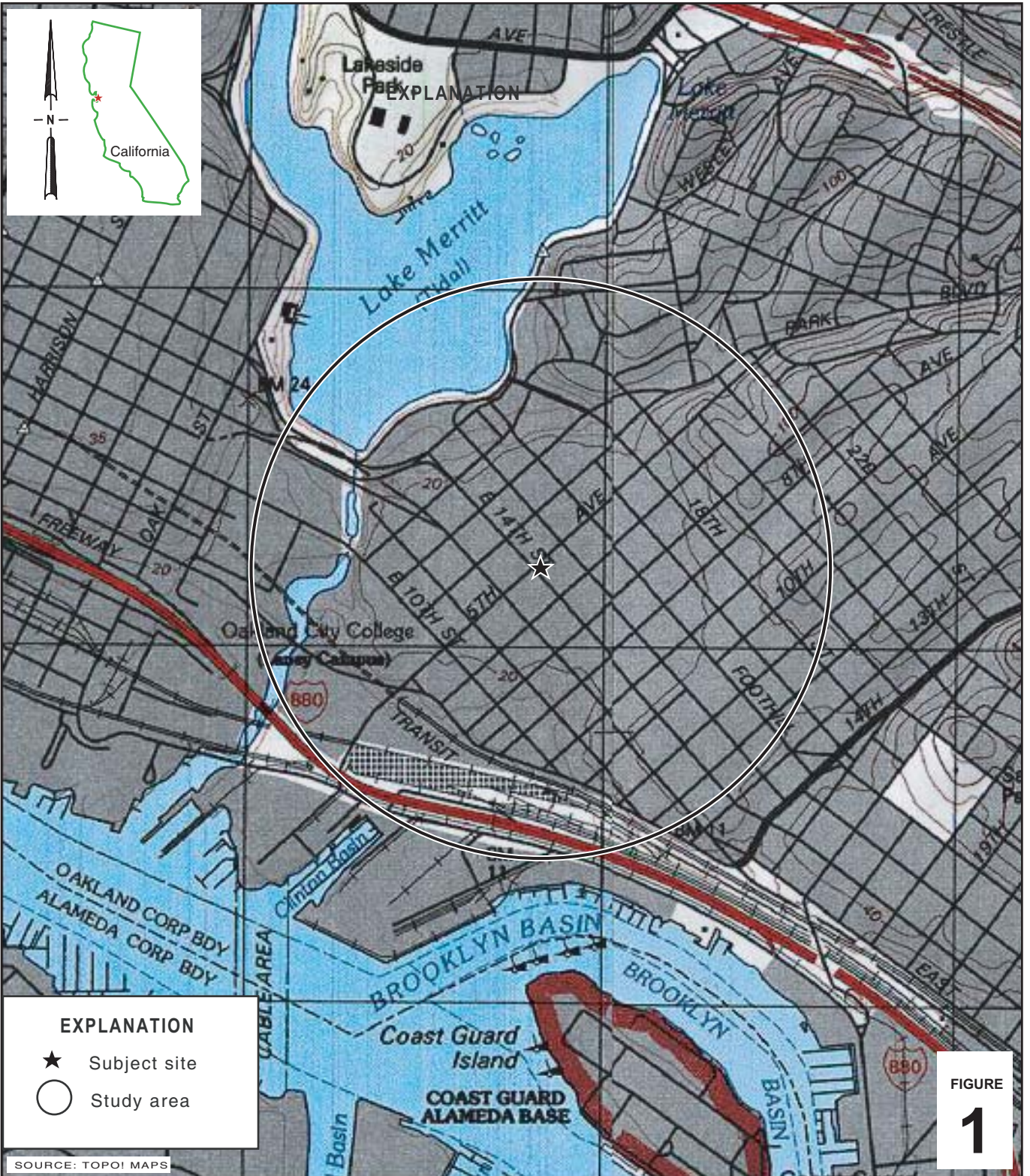
Peter Schaefer, CEG, CHG



Aubrey K. Cool, PG



FIGURES



I:\Shell\6-chars\2408--\240898-Oakland 510 E. 14th (506-510 International Blvd)\240898-FIGURES\240898 VICINITY.AI

FIGURE
1

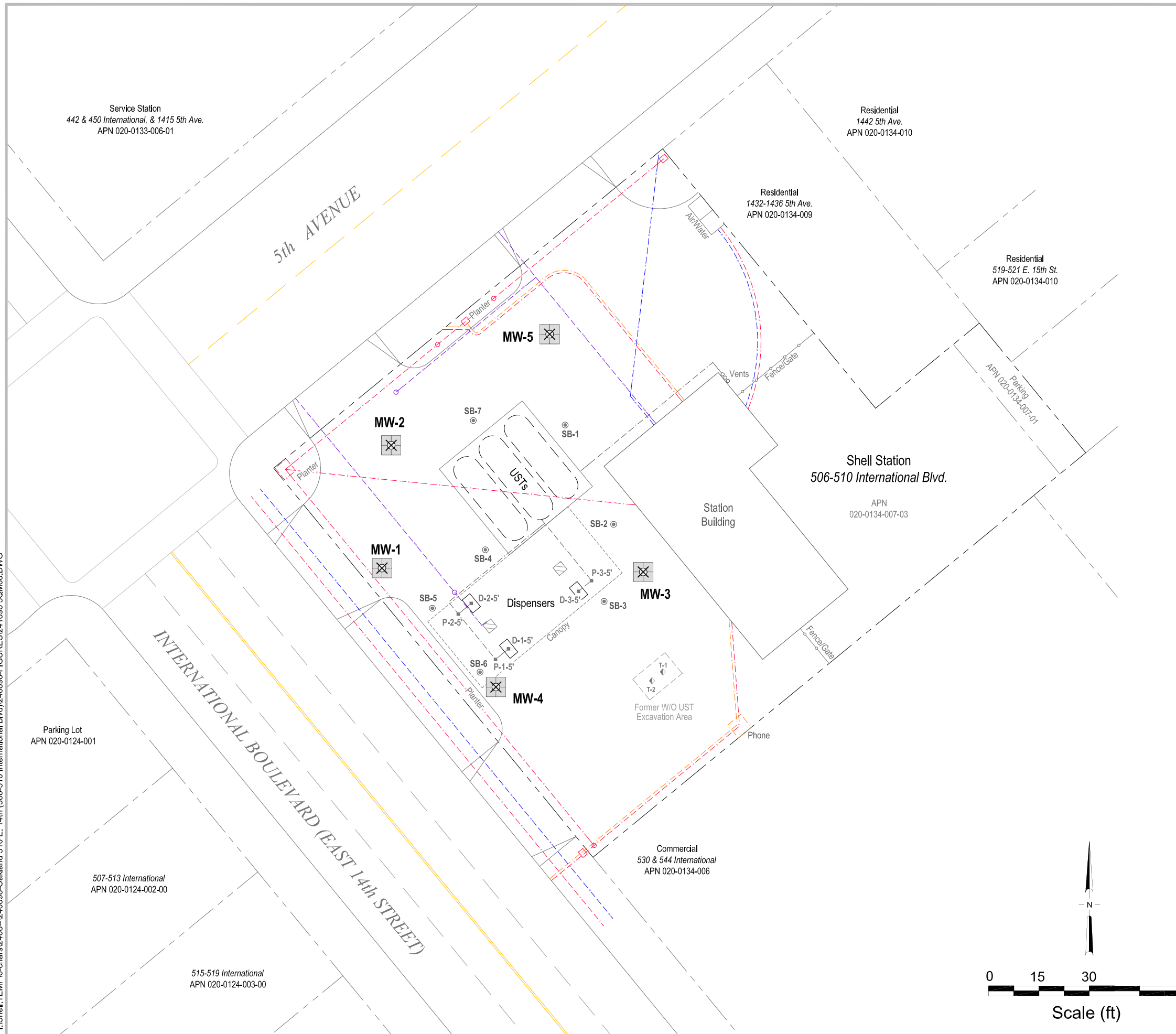
Shell-branded Service Station
510 E. 14th Street (506-510 International Blvd.)
Oakland, California



**CONESTOGA-ROVERS
& ASSOCIATES**

Vicinity Map

I:\Shell\TEMP\6-chars\2408-1240898-Oakland 510 E. 14th (506-510 International Blvd)\240898-FIGURES\241898 3Q\08.DWG



EXPLANATION	
MW-1	Monitoring well location, proposed for destruction
SB-1	Soil boring location (10/18-19/05)
D-1-5'	Soil and groundwater sample location (7/22/04)
T-1	Soil sample location (1993)
(Red dashed line)	Electrical line (E)
(Orange dashed line)	Telecommunication line (T)
(Purple dashed line)	Sanitary sewer line (SAN)
(Blue dashed line)	Water line (W)
(Grey dashed line)	Product piping line (P)
(Black dashed line)	Vent line (V)

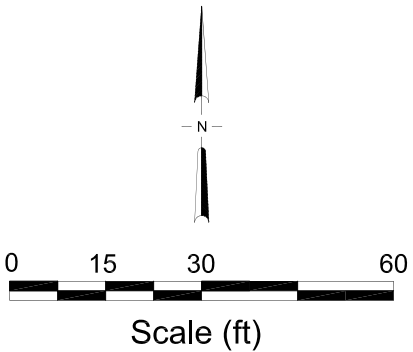


FIGURE 2

Site Plan



Shell-branded Service Station
 510 East 14th Street (506-510 International Boulevard)
 Oakland, California

APPENDIX A

WELL LOGS

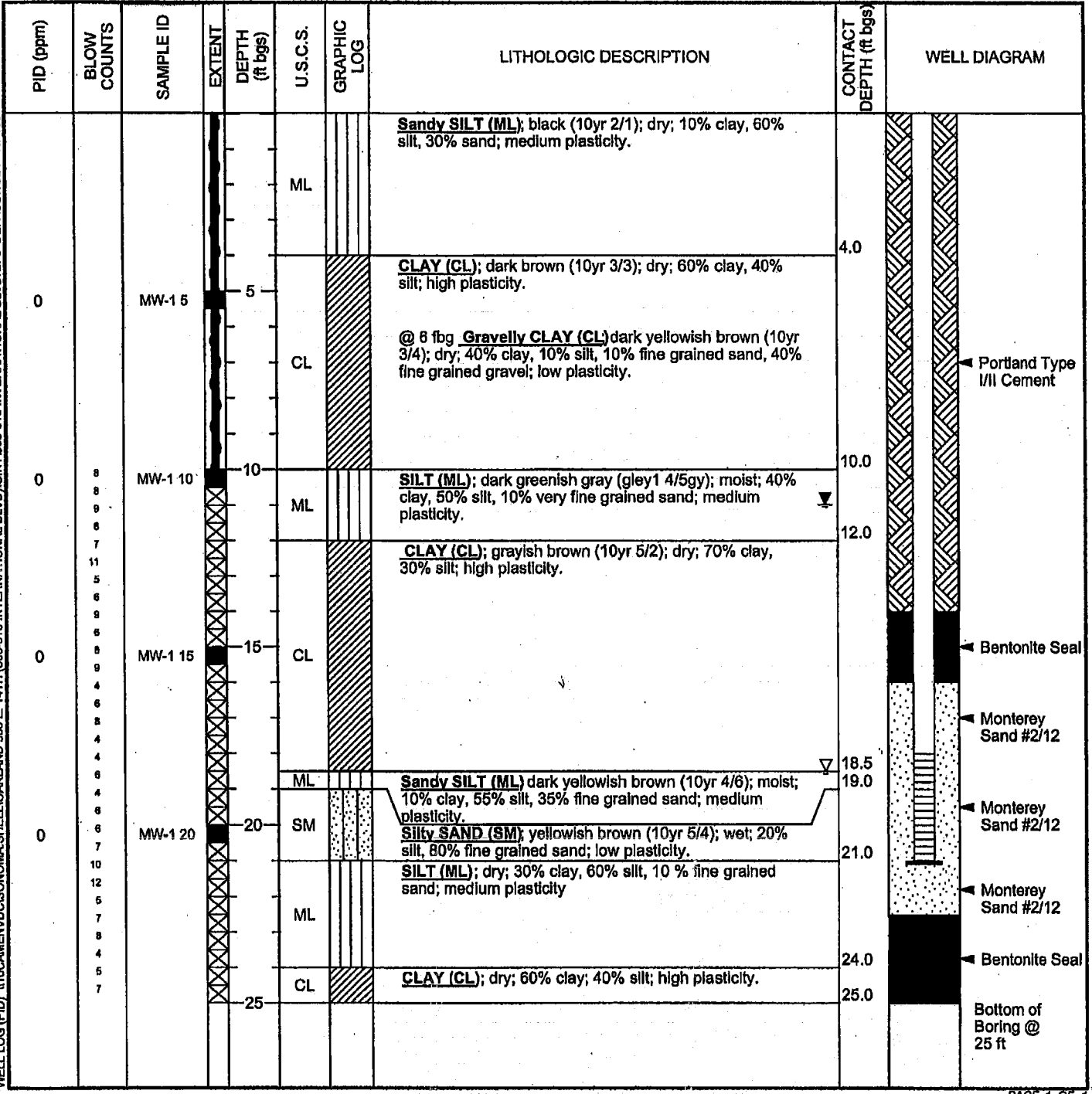


Cambria Environmental Technology, Inc.
 5900 Hollis Street, Suite A
 Emeryville, CA 94608
 Telephone: 510-420-0700
 Fax: 510-420-9170

BORING/WELL LOG

CLIENT NAME	Shell Oil Products US	BORING/WELL NAME	MW-1
JOB/SITE NAME	506-510 International Blvd	DRILLING STARTED	26-Jul-06
LOCATION	Oakland, CA	DRILLING COMPLETED	28-Jul-06
PROJECT NUMBER	248-0898-008	WELL DEVELOPMENT DATE (YIELD)	25-Aug-06 (64 gallons)
DRILLER	Gregg Drilling	GROUND SURFACE ELEVATION	31.13 ft above msl
DRILLING METHOD	Hollow-stem auger	TOP OF CASING ELEVATION	30.85 ft above msl
BORING DIAMETER	10"	SCREENED INTERVAL	18 to 21 ft bgs
LOGGED BY	B. DeBoer	DEPTH TO WATER (First Encountered)	18.5 ft (28-Jul-06)
REVIEWED BY	A. Friel	DEPTH TO WATER (Static)	10.98 ft (29-Aug-06)
REMARKS	Hand Augered to 10 fbg		

WELL LOG (PID) \\10CAMENVDCSONOMA-SHELL\OAKLAND 506 E. 14TH (506-510 INTERNATIONAL BLVD)\GINT\506-510 INTERNATIONAL BLVD.GPJ DEFAULT.GDT 10/4/06



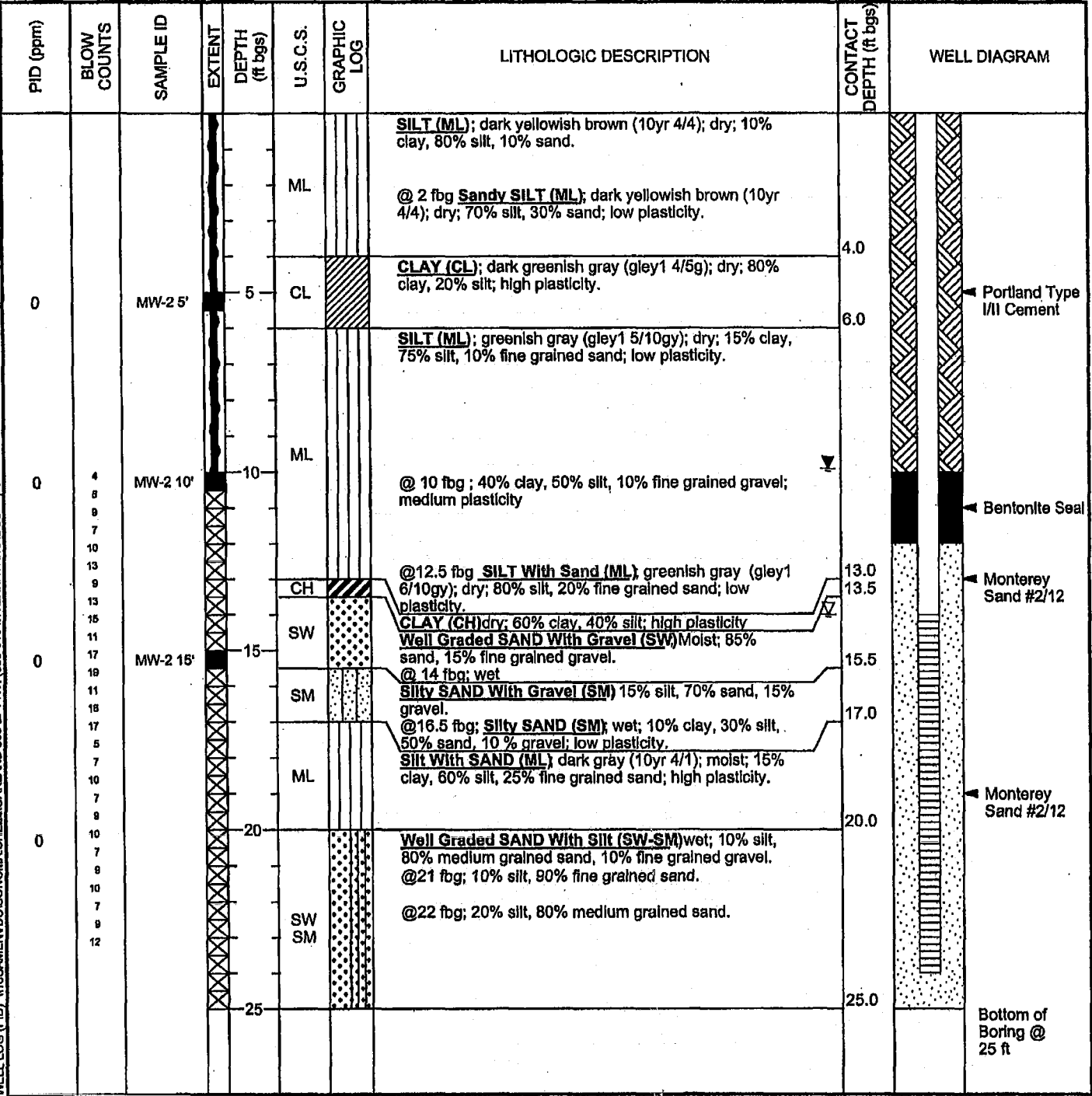


Cambria Environmental Technology, Inc.
 5900 Hollis Street, Suite A
 Emeryville, CA 94608
 Telephone: 510-420-0700
 Fax: 510-420-9170

BORING/WELL LOG

CLIENT NAME	Shell Oil Products US	BORING/WELL NAME	MW-2
JOB/SITE NAME	506-510 International Blvd	DRILLING STARTED	26-Jul-06
LOCATION	Oakland, CA	DRILLING COMPLETED	27-Jul-06
PROJECT NUMBER	248-0898-008	WELL DEVELOPMENT DATE (YIELD)	25-Aug-06 (93 gallons)
DRILLER	Gregg Drilling	GROUND SURFACE ELEVATION	31.46 ft above msl
DRILLING METHOD	Hollow-stem auger	TOP OF CASING ELEVATION	30.96 ft above msl
BORING DIAMETER	10"	SCREENED INTERVAL	14 to 24 ft bgs
LOGGED BY	B. DeBoer	DEPTH TO WATER (First Encountered)	14.0 ft (27-Jul-06) ∇
REVIEWED BY	A. Friel	DEPTH TO WATER (Static)	9.91 ft (28-Aug-06) ∇
REMARKS	Hand Augered to 10 fbg		

WELL LOG (PID) \\110CAMEN\DC\SONOMA_SHELL\OAKLAND 506 E. 14TH (506-510 INTERNATIONAL BLVD)\GINT\506-510 INTERNATIONAL BLVD.GPJ_DEFAULT1.GDT 10/4/06



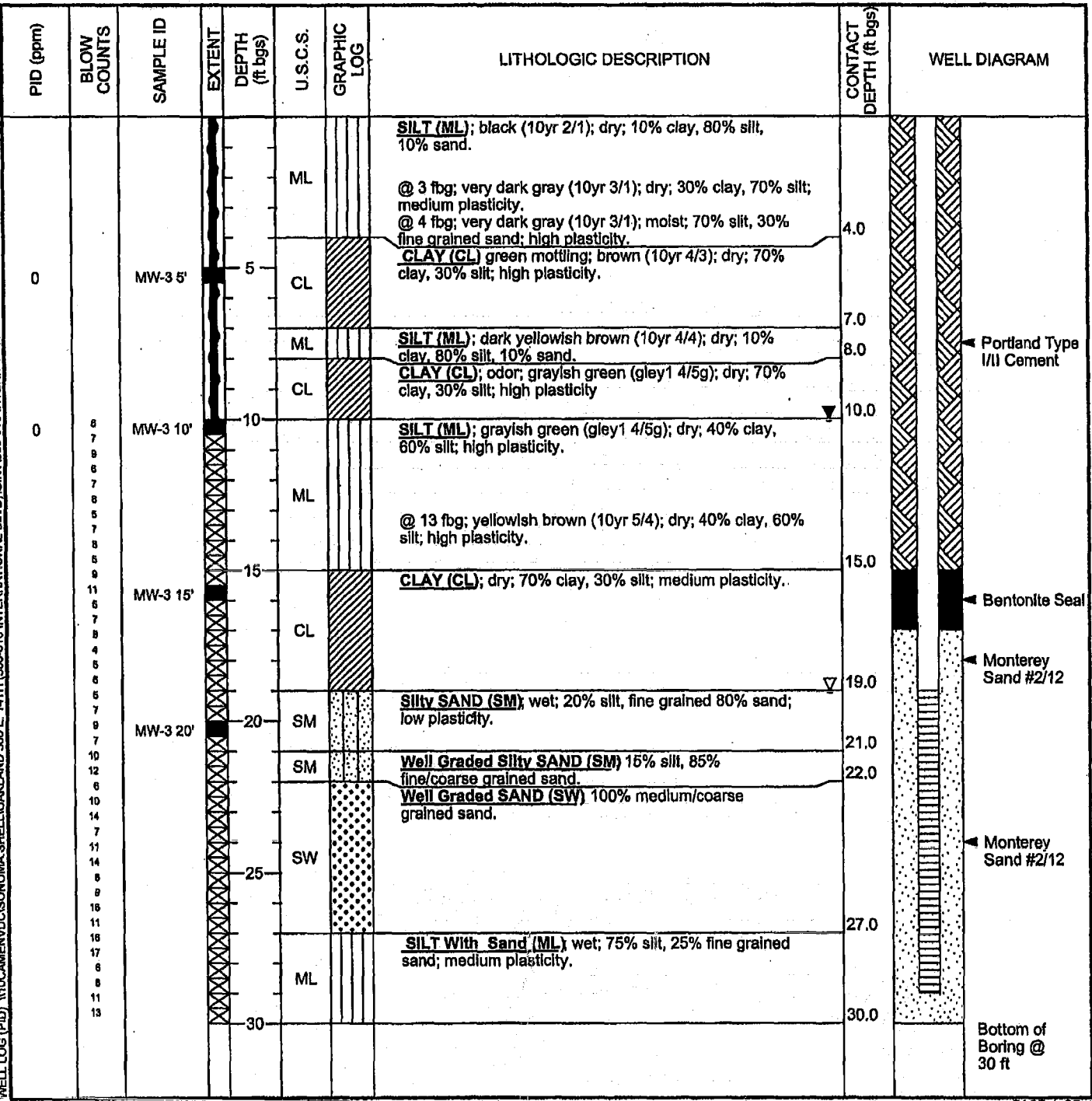


Cambria Environmental Technology, Inc.
 5900 Hollis Street, Suite A
 Emeryville, CA 94608
 Telephone: 510-420-0700
 Fax: 510-420-9170

BORING/WELL LOG

CLIENT NAME	Shell Oil Products US	BORING/WELL NAME	MW-3
JOB/SITE NAME	506-510 International Blvd	DRILLING STARTED	26-Jul-06
LOCATION	Oakland, CA	DRILLING COMPLETED	28-Jul-06
PROJECT NUMBER	248-0898-006	WELL DEVELOPMENT DATE (YIELD)	25-Aug-06 (114 gallons)
DRILLER	Gregg Drilling	GROUND SURFACE ELEVATION	32.41 ft above msl
DRILLING METHOD	Hollow-stem auger	TOP OF CASING ELEVATION	32.02 ft above msl
BORING DIAMETER	10"	SCREENED INTERVAL	19 to 29 ft bgs
LOGGED BY	B. DeBoer	DEPTH TO WATER (First Encountered)	19.0 ft (28-Jul-06)
REVIEWED BY	A. Friel	DEPTH TO WATER (Static)	10.00 ft (29-Aug-06)
REMARKS	Hand Augered to 10 fbg		

WELL LOG (PID) 110CAMENVDCISONOMA SHELL OAKLAND 506 E. 14TH (506-510 INTERNATIONAL BLVD) (GINT) 506-510 INTERNATIONAL BLVD GPJ DEFAULT.GDT 10/04/06



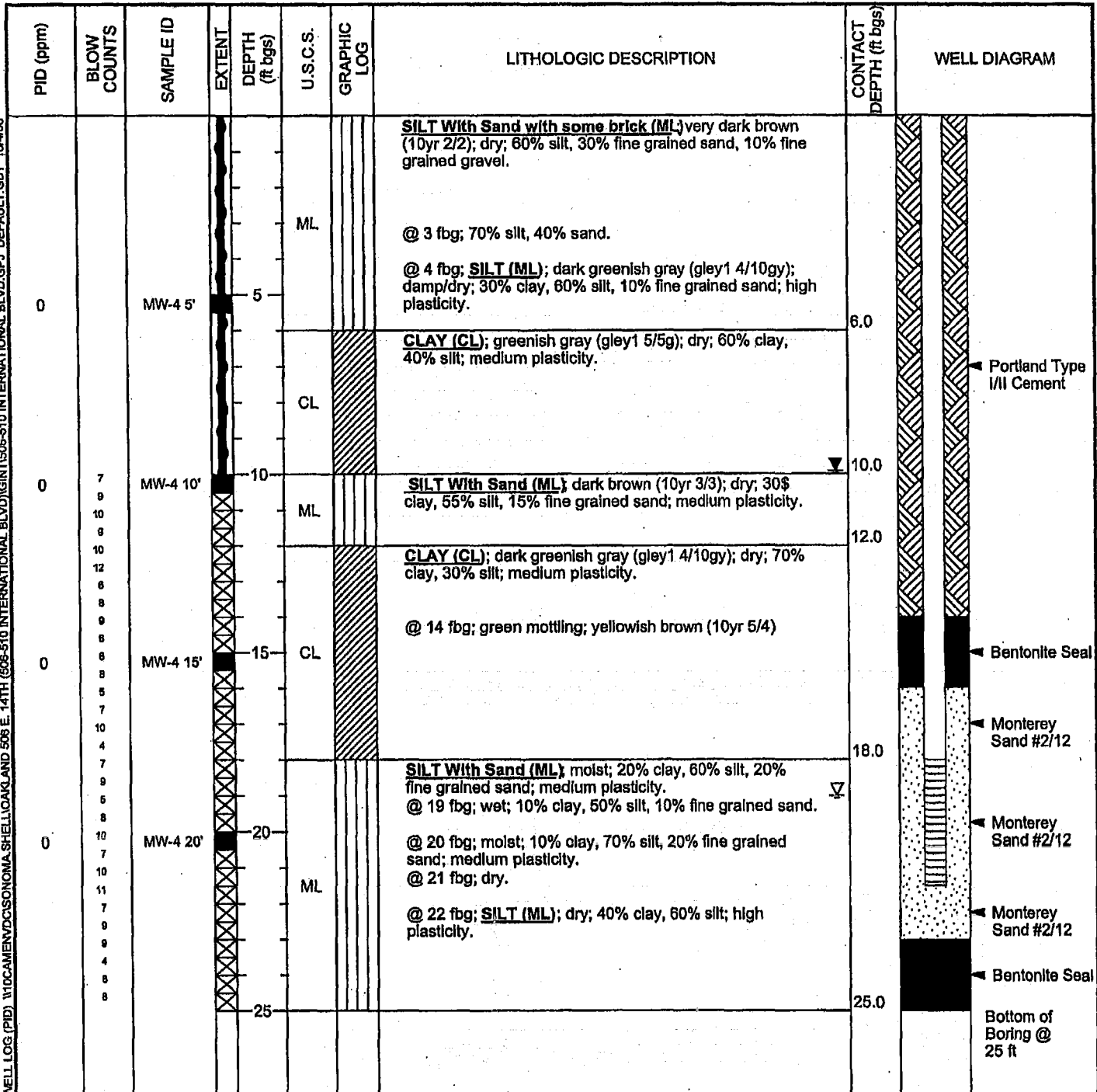


Cambria Environmental Technology, Inc.
 5900 Hollis Street, Suite A
 Emeryville, CA 94608
 Telephone: 510-420-0700
 Fax: 510-420-9170

BORING/WELL LOG

CLIENT NAME	Shell Oil Products US	BORING/WELL NAME	MW-4
JOB/SITE NAME	506-510 International Blvd	DRILLING STARTED	28-Jul-06
LOCATION	Oakland, CA	DRILLING COMPLETED	28-Jul-06
PROJECT NUMBER	248-0898-006	WELL DEVELOPMENT DATE (YIELD)	25-Aug-06 (39 gallons)
DRILLER	Gregg Drilling	GROUND SURFACE ELEVATION	31.31 ft above msl
DRILLING METHOD	Hollow-stem auger	TOP OF CASING ELEVATION	31.10 ft above msl
BORING DIAMETER	10"	SCREENED INTERVAL	18 to 21.5 ft bgs
LOGGED BY	B. DeBoer	DEPTH TO WATER (First Encountered)	19.0 ft (28-Jul-06) ▼
REVIEWED BY	A. Friel	DEPTH TO WATER (Static)	9.91 ft (28-Aug-06) ▼
REMARKS	Hand Augered to 10 fbg		

WELL LOG (PID) \110CAMENV\DCSONOMA.SHELL\OAKLAND 506 E. 14TH (506-510 INTERNATIONAL BLVD)\GINT\506-510 INTERNATIONAL BLVD.GPJ DEFAULT.GDT 10/4/06





Cambria Environmental Technology, Inc.
 5900 Hollis Street, Suite A
 Emeryville, CA 94608
 Telephone: 510-420-0700
 Fax: 510-420-9170

BORING/WELL LOG

CLIENT NAME	Shell Oil Products US	BORING/WELL NAME	MW-5
JOB/SITE NAME	506-510 International Blvd	DRILLING STARTED	26-Jul-06
LOCATION	Oakland, CA	DRILLING COMPLETED	27-Jul-06
PROJECT NUMBER	248-0898-006	WELL DEVELOPMENT DATE (YIELD)	25-Aug-09 (39 gallons)
DRILLER	Gregg Drilling	GROUND SURFACE ELEVATION	31.96 ft above msl
DRILLING METHOD	Hollow-stem auger	TOP OF CASING ELEVATION	31.61 ft above msl
BORING DIAMETER	10"	SCREENED INTERVAL	19 to 22 ft bgs
LOGGED BY	B. DeBoer	DEPTH TO WATER (First Encountered)	20.0 ft (27-Jul-06)
REVIEWED BY	A. Friel	DEPTH TO WATER (Static)	9.98 ft (29-Aug-06)
REMARKS	Hand Augered to 10 fbg		

WELL LOG (PID) 1100-AMENVDISONOMA SHELL OAK AND 506 E. 14TH (506-510 INTERNATIONAL BLVD) (GINT) 506-510 INTERNATIONAL BLVD.GPJ DEFAULT.GDT 10/4/06

