

Alameda County Environmental Health

1131 Harbor Bay Pkwy., #250
Alameda CA 94502-6577
Telephone (510) 567-6700 FAX (510) 337-9335

FACSIMILE COVER SHEET

TO: Mark Annola

FROM: Susan Hugo

DATE: 3/29/01

Total number of pages including cover sheet 11

-NOTES- Obvies Rubber info &
Notes during on site meeting.

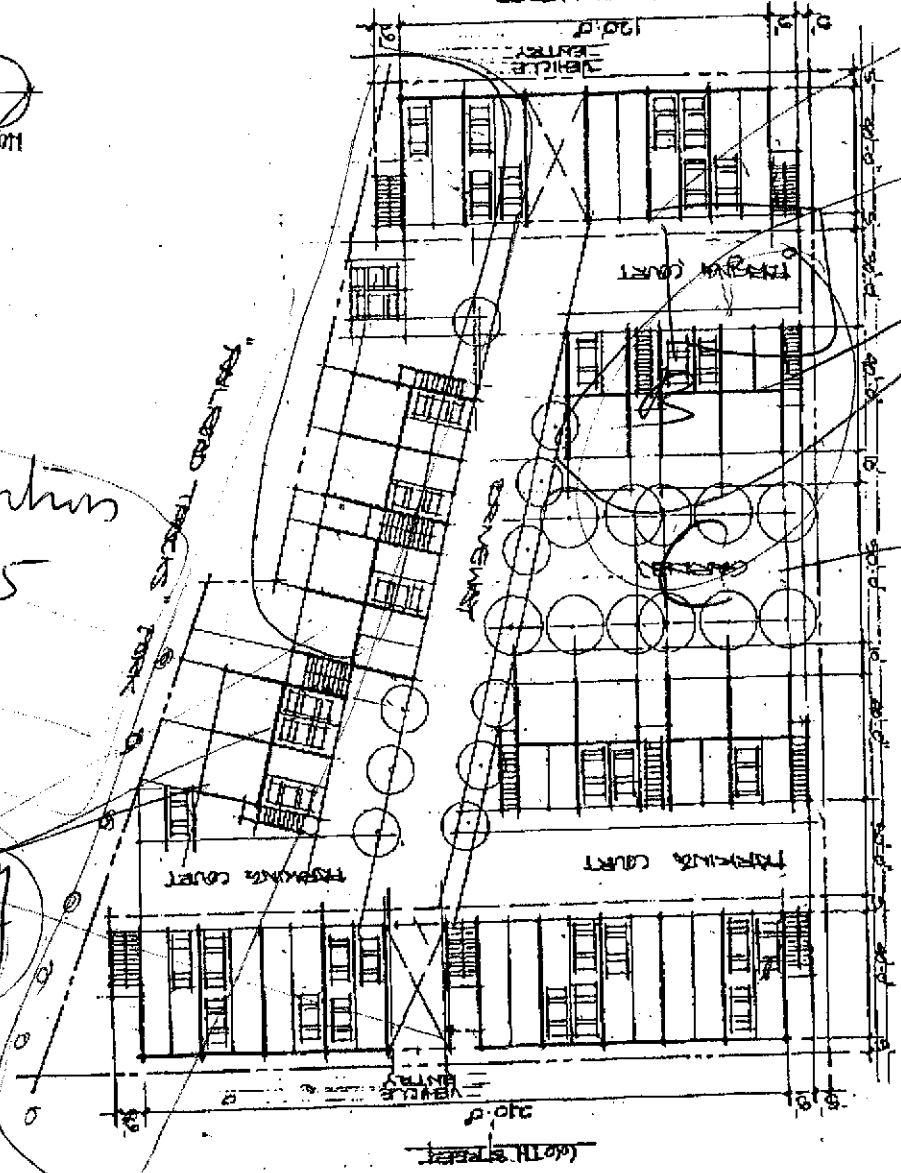
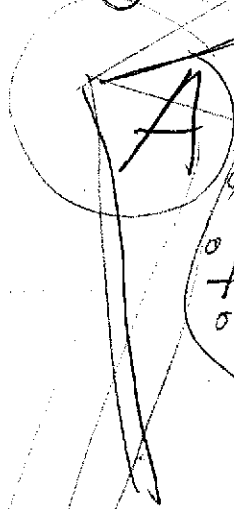
CONCEPT PLAN FOR 43 TOWNHOMES, LOTS 10 & 11
 1040 SOUTH STREET, BERKELEY, CA
 43 UNITS: 19 TOWNHOMES ON GRADE
 24 UNITS: 12 TOWNHOMES
 43 UNITS TOTAL IN 2 PARKING SPACES UNIT

KAVA
 INC. BERKELEY, CA
 2000 MARINA STREET
 BERKELEY, CA 94710

- 500' ~~up~~ upgrade
- A - G.W.
- B - G.W.
- Soil depth locations 4-5
- C 0'-3' everything



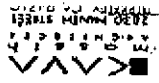
RMA



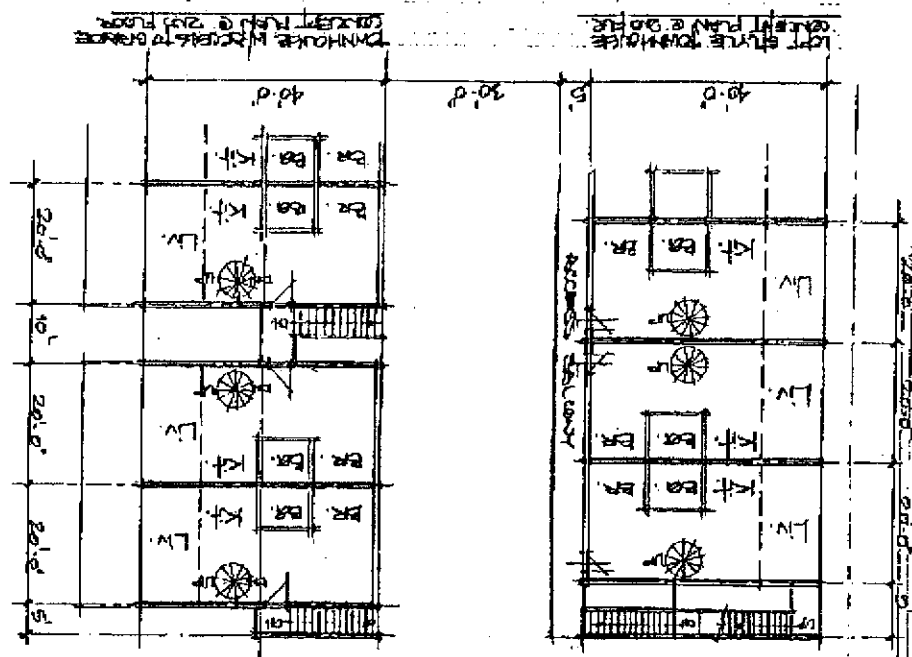
0-3
 0-12
 12-36

SHEET NO. 415 0391

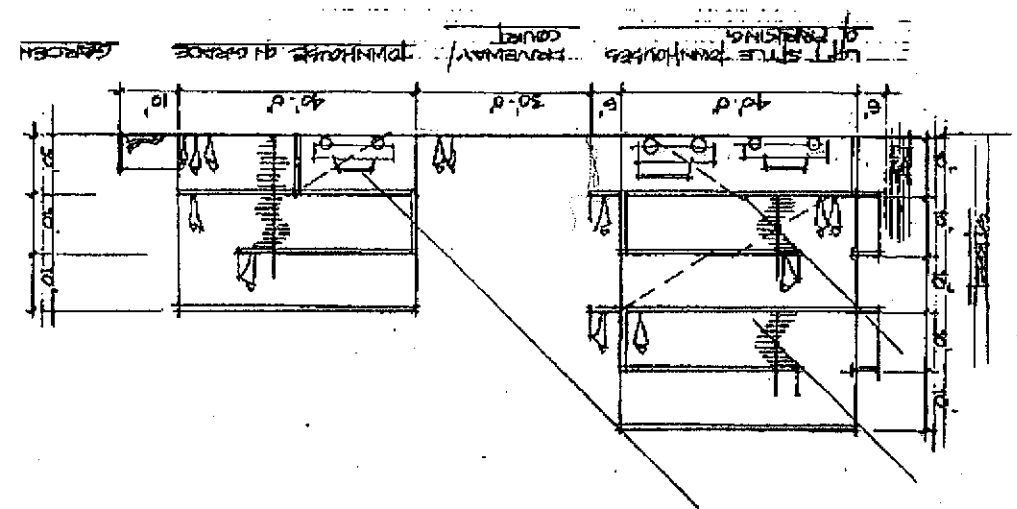
CONCEPT FLOOR PLANS & SECTIONS OF
1209 WEST STREET BUREAU

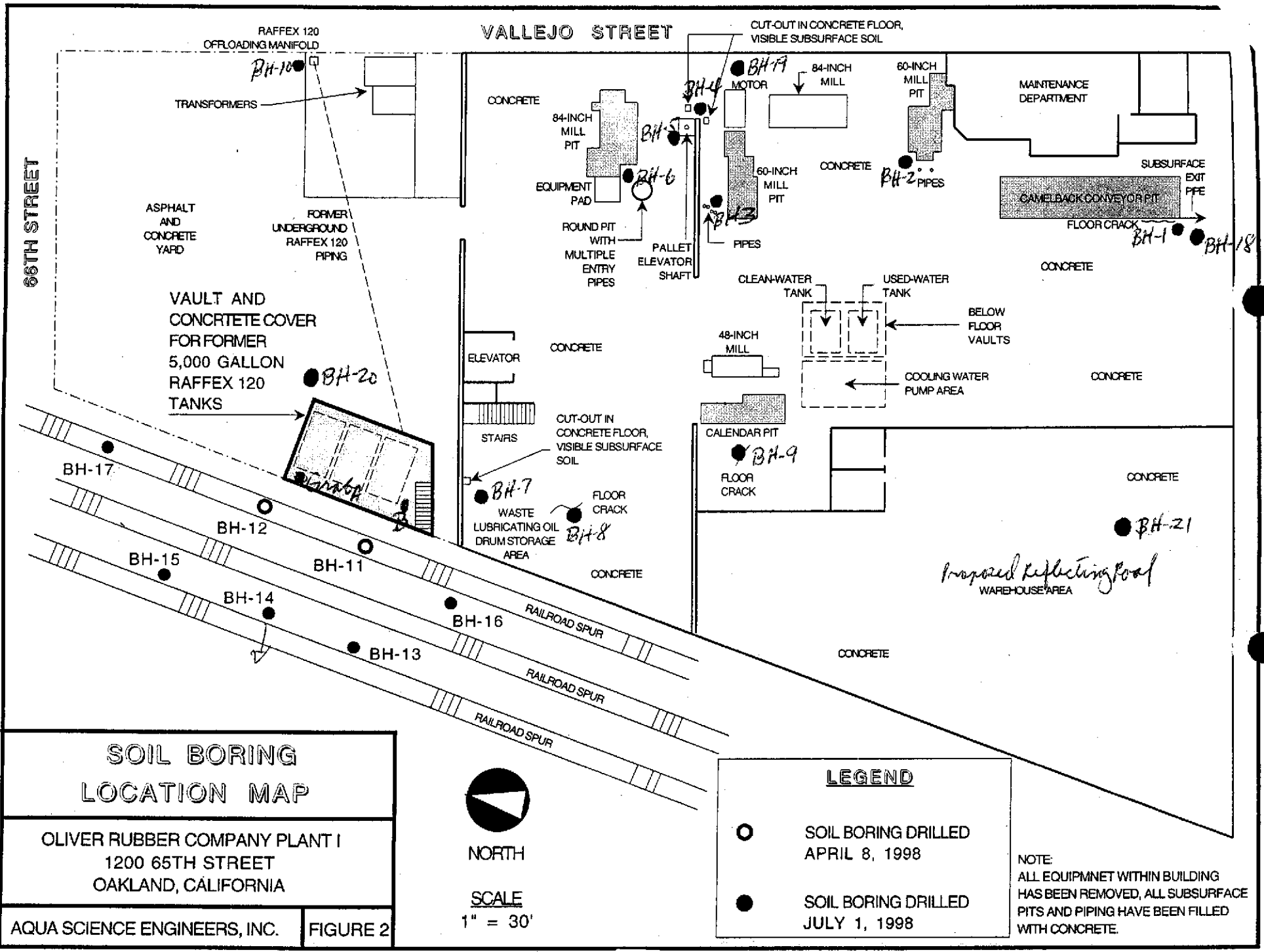


CONCEPT FLOOR PLANS OF 2ND RR. LEVEL
1/16" = 1'-0"



CONCEPT SECTION THRU "LEFT" & TOWNHOUSES
1/8" = 1'-0"





66TH STREET

VALLEJO STREET

RAFFEX 120 OFFLOADING MANIFOLD

CUT-OUT IN CONCRETE FLOOR, VISIBLE SUBSURFACE SOIL

ASPHALT AND CONCRETE YARD

VAULT AND CONCRETE COVER FOR FORMER 5,000 GALLON RAFFEX 120 TANKS

CONCRETE

84-INCH MILL PIT

EQUIPMENT PAD

ROUND PIT WITH MULTIPLE ENTRY PIPES

PALLET ELEVATOR SHAFT

84-INCH MILL

60-INCH MILL PIT

MAINTENANCE DEPARTMENT

SUBSURFACE EXIT PFE

CAMELBACK CONVEYOR PIT

FLOOR CRACK

CONCRETE

CLEAN-WATER TANK

USED-WATER TANK

BELOW FLOOR VAULTS

COOLING WATER PUMP AREA

CONCRETE

48-INCH MILL

CALENDAR PIT

FLOOR CRACK

CONCRETE

ELEVATOR

CONCRETE

CUT-OUT IN CONCRETE FLOOR, VISIBLE SUBSURFACE SOIL

STAIRS

FLOOR CRACK

WASTE LUBRICATING OIL DRUM STORAGE AREA

CONCRETE

CONCRETE

Proposed Reflecting Pool WAREHOUSE AREA

CONCRETE

SOIL BORING LOCATION MAP

OLIVER RUBBER COMPANY PLANT I
1200 65TH STREET
OAKLAND, CALIFORNIA

AQUA SCIENCE ENGINEERS, INC.

FIGURE 2



NORTH

SCALE
1" = 30'

LEGEND

- SOIL BORING DRILLED APRIL 8, 1998
- SOIL BORING DRILLED JULY 1, 1998

NOTE:
ALL EQUIPMENT WITHIN BUILDING HAS BEEN REMOVED, ALL SUBSURFACE PITS AND PIPING HAVE BEEN FILLED WITH CONCRETE.

TABLE ONE
Soil Analytical Results
TPH-RAFFEX
Soil Samples Collected March 11 and April 8, 1998
All results are in parts per million

SAMPLE ID.	MATRIX	TPH RAFFEX
GRAB-A @ 3.5'	SOIL	380
TRENCH-A	SOIL	3.8
TRENCH-B	SOIL	3.5
TRENCH-C	SOIL	9.6
EPA METHOD	---	8015M

Notes: Detectable concentrations are in **bold**

TABLE TWO
Soil Analytical Results
TPH-RAFFEX, Oil & Grease, Zinc, and VOCs
Soil Borings Drilled April 8, 1998
All results are in parts per million

SAMPLE ID.	TPH RAFFEX	OIL & GREASE	ZINC	All VOCs
BH-1 @ 3'	10	<50	18	<5.0 - <50
BH-2 @ 2.5'	6.4	<50	---	<5.0 - <50
BH-3 @ 3'	3.1	<50	---	<5.0 - <50
BH-4 @ 2'	40	<50	---	<5.0 - <50
BH-5 @ 5'	36	<50	---	<5.0 - <50
BH-6 @ 6'	10	<50	---	<5.0 - <50
BH-7 @ 5.5'	4.7	<50	---	<5.0 - <50
BH-8 @ 4'	14	260	---	<5.0 - <50
BH-9 @ 4'	5.1	<50	---	<5.0 - <50
BH-10 @ 3'	7.5	---	---	<5.0 - <50
BH-11 @ 6'	74	---	---	<5.0 - <50
BH-12 @ 5.5'	20	---	---	<5.0 - <50
EPA METHOD	8015M	5520 EF	6010	8010

Notes: Detectable concentrations are in **bold**.
 Non-detectable concentrations are noted by the less than sign (<) followed by the laboratory detection limit.

TABLE TWO
Soil Analytical Results
All results are in **parts per million**

SAMPLE ID.	TPH RAFFEX	OIL & GREASE	ZINC	All VOCs
BH-1 @ 3'	10	<50	18	<5.0 - <50
BH-2 @ 2.5'	6.4	<50	---	<5.0 - <50
BH-3 @ 3'	3.1	<50	---	<5.0 - <50
BH-4 @ 2'	40	<50	---	<5.0 - <50
BH-5 @ 5'	36	<50	---	<5.0 - <50
BH-6 @ 6'	10	<50	---	<5.0 - <50
BH-7 @ 5.5'	4.7	<50	---	<5.0 - <50
BH-8 @ 4'	14	260	---	<5.0 - <50
BH-9 @ 4'	5.1	<50	---	<5.0 - <50
BH-10 @ 3'	7.5	---	---	<5.0 - <50
BH-11 @ 6'	74	---	---	<5.0 - <50
BH-12 @ 5.5'	20	---	---	<5.0 - <50
EPA METHOD	8015M	5520 EF	6010	8010

Notes: Detectable concentrations are in **bold**.
Non-detectable concentrations are noted by the less than sign (<) followed by the laboratory detection limit.

7.0 GROUNDWATER ANALYTICAL RESULTS

The groundwater samples were analyzed by Chromalab for total extractable hydrocarbons as RAFFEX by modified EPA Method 8015. The analytical results are presented below in Table Three, and the certified analytical report and chain of custody forms are included in Appendix E.

TABLE THREE
Groundwater Analytical Results
All results are in **parts per million**

SAMPLE ID.	LOCATION	TPH RAFFEX
GRAB-A	INSIDE VAULT	8
GRAB-B	INSIDE VAULT	28
BH-11	DOWNGRAIENT OF VAULT	1.2
BH-12	DOWNGRAIENT OF VAULT	4.6
EPA METHOD	---	8015M

Note: Detectable concentrations are in **bold**

TABLE THREE
 Groundwater Analytical Results
 TPH-RAFFEX
 Soil Borings Drilled April 8, 1998
 All results are in parts per million

SAMPLE ID.	LOCATION	TPH RAFFEX
GRAB-A	INSIDE VAULT	8
GRAB-B	INSIDE VAULT	28
BH-11	DOWNGRADIANT OF VAULT	1.2
BH-12	DOWNGRADIANT OF VAULT	4.6
EPA METHOD	---	8015M

Note: Detectable concentrations are in **bold**

TABLE FOUR
 Soil Analytical Results
 TPH-Raffex, VOCs & SVOCs
 Soil Borings Drilled July 1, 1998
 All results are in parts per million

SAMPLE ID.	TPH RAFFEX	1,1-DICHLOROETHENE	REMAINING VOLATILE ORGANIC COMPOUNDS	ALL SEMI-VOLATILE ORGANIC COMPOUNDS
BH-13 @ 3.5'	5.6	< 0.005	< 0.005 - < 0.050	< 0.10 - < 0.50
BH-14 @ 15.5'	< 1.0	0.0076	< 0.005 - < 0.050	< 0.10 - < 0.50
BH-15 @ 15.0'	1.8	< 0.005	< 0.005 - < 0.050	< 0.10 - < 0.50
EPA METHOD	8015M	8240	8240	8270

Notes: Detectable concentrations are in **bold**.
 Non-detectable concentrations are noted by the less than sign (<) followed by the laboratory detection limit.

TABLE FIVE
 Groundwater Analytical Results
 TPH-RAFFEX
 Soil Borings Drilled July 1, 1998
 All results are in parts per billion

SAMPLE ID.	TPH RAFFEX
-----	-----
BH-13 WATER	140
BH-14 WATER	270
BH-15 WATER	96
BH-16 WATER	63
BH-17 WATER	<50
EPA METHOD	8015M

Note: Detectable concentrations are in **bold**.
 Non-detectable concentrations are noted by the less than sign (<) followed by the laboratory detection limit.

TABLE SIX
 Groundwater Analytical Results
 Semi-Volatile Organic Compounds
 Soil Borings Drilled July 1, 1998
 All results are in parts per billion

SAMPLE ID.	PHENOL	REMAINING SEMI-VOLATILE ORGANIC COMPOUNDS
-----	-----	-----
BH-13 WATER	11	<2.0 - <10.0
BH-14 WATER	<3.3	<3.3 - <17.0
BH-15 WATER	3.7	<2.0 - <10.0
BH-16 WATER	<2.5	<2.5 - <12.0
BH-17 WATER	<2.0	<2.0 - <10.0
EPA METHOD	8270	8270

Notes: Detectable concentrations are in **bold**.
 Non-detectable concentrations are noted by the less than sign (<) followed by the laboratory detection limit.

TABLE SEVEN
Groundwater Analytical Results
Volatile Organic Compounds
Soil Borings Drilled July 1, 1998
All results are in parts per billion

SAMPLE ID.	BENZENE	TOLUENE	1,1-DCA	1,1-DCE	1,1,1-TCA	REMAINING VOLATILE ORGANIC COMPOUNDS
BH-13 WATER	<0.5	0.66	<0.5	<0.5	<0.5	<0.5 - < 50.0
BH-14 WATER	<0.5	0.68	0.63	3.2	0.90	<0.5 - < 50.0
BH-15 WATER	<0.5	<0.5	<0.5	<0.5	<0.5	<0.5 - < 50.0
BH-16 WATER	<0.5	1.3	<0.5	<0.5	<0.5	<0.5 - < 50.0
BH-17 WATER	0.56	1.0	<0.5	<0.5	<0.5	<0.5 - < 50.0
EPA METHOD	8240	8240	8240	8240	8240	8240

Notes: Detectable concentrations are in **bold**.
 Non-detectable concentrations are noted by the less than sign (<) followed by the laboratory detection limit.
 1,1-DCA is 1,1-Dichloroethane.
 1,1-DCE is 1,1-Dichloroethene.
 1,1,1-TCA is 1,1,1-Trichloroethane.

TABLE EIGHT
Soil Analytical Results
VOCs & SVOCs
Soil Borings Drilled September 2 & 3, 1998
All results are in parts per million

SAMPLE ID.	ETHYLBENZENE	PHENOL	REMAINING VOLATILE ORGANIC COMPOUNDS	ALL SEMI-VOLATILE ORGANIC COMPOUNDS
BH-18 @ 3.5'	0.0065	<0.1	< 0.005 - < 0.050	< 0.050 - < 2.0
BH-19 @ 3.5'	< 0.005	<0.1	< 0.005 - < 0.050	< 0.050 - < 2.0
BH-20 @ 7.5'	< 0.005	<0.1	< 0.005 - < 0.050	< 0.050 - < 2.0
BH-21 @ 9.5'	< 0.005	0.29	< 0.005 - < 0.050	< 0.050 - < 2.0
EPA METHOD	8240	8270	8240	8270

Notes: Detectable concentrations are in **bold**.
 Non-detectable concentrations are noted by the less than sign (<) followed by the laboratory detection limit.

TABLE NINE
Groundwater Analytical Results
Volatile Organic Compounds
Soil Borings Drilled September 2 & 3, 1998
All results are in parts per billion

SAMPLE ID.	1,1-DCA	1,1-DCE	1,1,1-TCA	REMAINING VOLATILE ORGANIC COMPOUNDS
BH-18 WATER	<2.0	<2.0	<2.0	< 2.0 - < 50
BH-19 WATER	<2.0	<2.0	<2.0	< 2.0 - < 50
BH-20 WATER	11	260	99	< 2.0 - < 50
BH-21 WATER	<2.0	<2.0	<2.0	< 2.0 - < 50
EPA METHOD	8240	8240	8240	8240

Notes: Detectable concentrations are in **bold**.
 Non-detectable concentrations are noted by the less than sign (<) followed by the laboratory detection limit.
 1,1-DCA is 1,1-Dichloroethane.
 1,1-DCE is 1,1-Dichloroethene.
 1,1,1-TCA is 1,1,1-Trichloroethane.

TABLE TEN
 Groundwater Analytical Results
 Semi-Volatile Organic Compounds
 Soil Borings Drilled September 2 & 3, 1998
 All results are in **parts per billion**

SAMPLE ID.	BUTYL BENZYL PHTHALATE	REMAINING SEMI-VOLATILE ORGANIC COMPOUNDS
-----	-----	-----
BH-18 WATER	< 14	< 2.3 - < 27.0
BH-19 WATER	< 12	< 2.3 - < 27.0
BH-20 WATER	9.4	< 2.3 - < 27.0
BH-21 WATER	< 5.8	< 2.3 - < 27.0
EPA METHOD	8270	8270

Notes: Detectable concentrations are in **bold**.

Non-detectable concentrations are noted by the less than sign (<) followed by the laboratory detection limit.