

Environmental Risk Sciences, Inc.

381 Bush Street, Suite 600
San Francisco, California 94104

Phone: (415) 392-7422
Fax : (415) 296-9788

December 4, 1990

Mr. Hugh Murphy
Hayward Fire Department
22300 Hayward Boulevard
Hayward, CA 94541

Re: Toxicological Review of Ground Water Samples
Sunnyside Commons II and Sunnyside Nursery, Hayward, CA

Dear Mr. Murphy:

Laura Rice of The Plymouth Group has asked me to review the results of the most recent ground water samples obtained from the Sunnyside Commons II and Sunnyside Nursery property in order to evaluate the potential human health risks associated with the hypothetical use of ground water at the property. Based on the work plan submitted by Terratech in the November 7, 1990 letter to you, four exploratory borings were drilled at the property, designated as WS-1, WS-2, WS-3 and WS-4. One ground water sample from each exploratory boring was obtained on November 16, 1990 and analyzed for the organochlorine pesticides (EPA Method 8080).

The results from these ground water samples indicate that no pesticides were detected at these four sampling locations (see attached site map and table). The analytical detection limit of 0.1 ppb (ug/L) in these ground water samples is considerably less than the ground water clean-up level of 1.75 ug/L for the endosulfans (endosulfan I, endosulfan II, and endosulfan sulfate) estimated by ERS, based on U.S. EPA and DHS methodologies, in Appendix C of the Sunnyside Commons health risk assessment.

Based upon the recent analytical results for these samples showing no detectable levels of organochlorine pesticides in ground water at the Sunnyside Commons property, it is my professional judgment that according to the best available health risk assessment methodology supplied by the U.S. EPA and the DHS, the potential use of ground water obtained from these four locations do not pose a potential risk to human health.

Very truly yours,

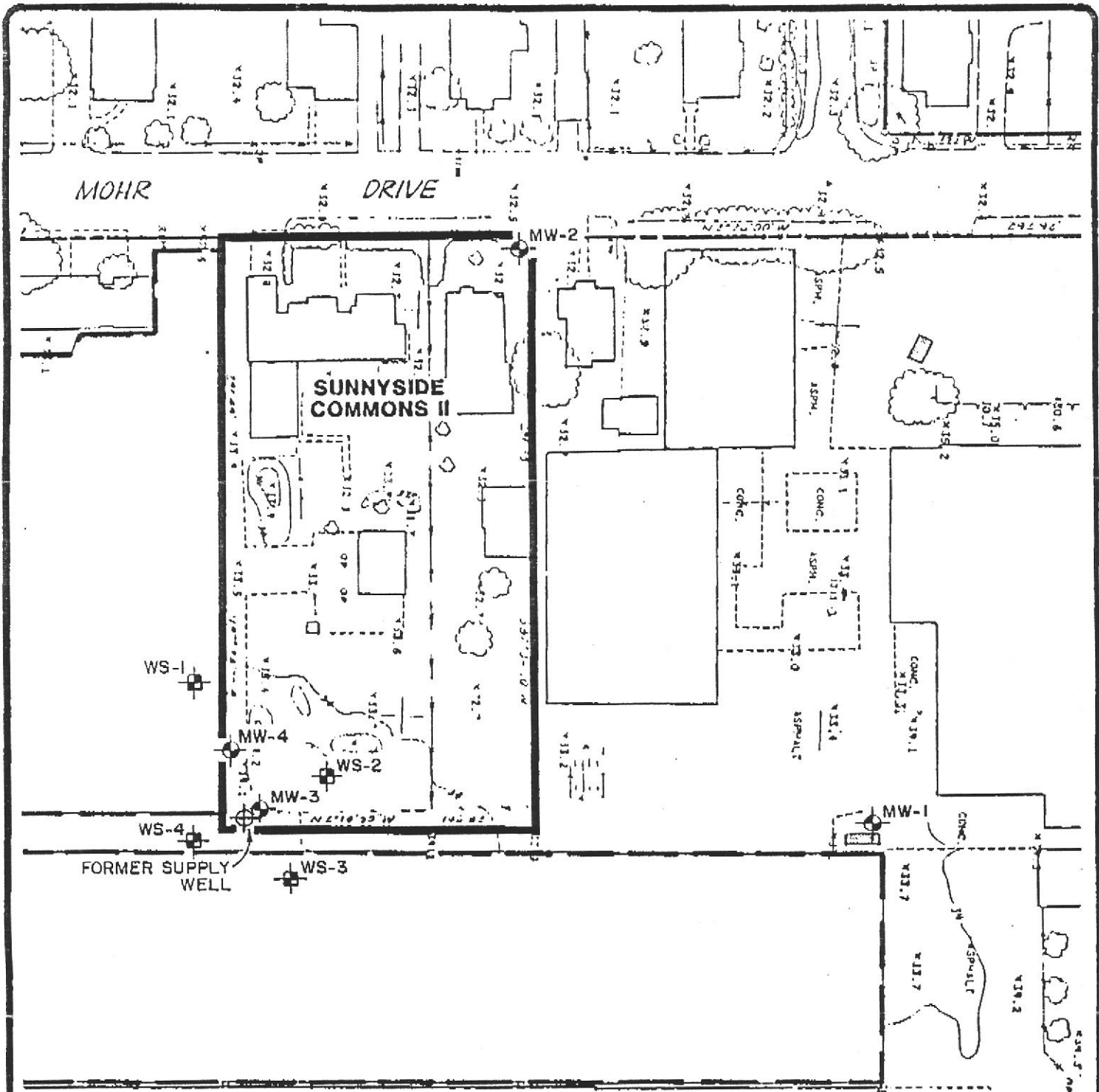
ENVIRONMENTAL RISK SCIENCES, INC.





Scott K. Wolff
Principal

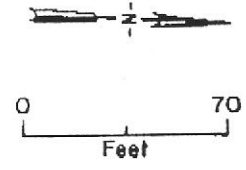
cc: Laura Rice, The Plymouth Group
✓ Pam Evans, Alameda County Health Agency
Richard Hiatt, Regional Water Quality Control Board

ERS



LEGEND

-  MW-4 Monitoring well location
-  WS-4 Ground water grab sample location




Dec. 1990
TERRATECH

SUNNYSIDE COMMONS II
 HAYWARD, CALIFORNIA

**SITE PLAN AND
 GROUND WATER SAMPLING LOCATIONS**

**FIGURE
 I**

**PROJECT
 4454/3**

TABLE 1

CUMULATIVE SUMMARY OF GROUND WATER SAMPLE ANALYSIS RESULTS

SUNNYSIDE COMMONS II
Hayward, California

SAMPLE LOCATION	DATE COLLECTED (1990)	DDD (ppb)	ENDOSULFAN I (ppb)	ENDOSULFAN II (ppb)	ENDOSULFAN SULFATE (ppb)	OTHERS * (ppb)
SW-1	1/25	< 0.5	5.0	4.5	5.1	N.D.
MW-2	7/17	< 0.1	< 0.05	< 0.1	< 0.1	N.D.
MW-3	5/18	< 0.1	0.37	0.17	0.16	N.D.
	7/17	< 0.1	0.15	0.50	< 0.1	N.D.
	10/17	< 0.1	0.11	< 0.1	< 0.1	N.D.
MW-4	6/11	0.14	< 0.1	< 0.1	< 0.1	N.D.
	7/17	< 0.1	< 0.1	< 0.1	< 0.1	N.D.
	10/17	< 0.1	< 0.1	< 0.1	< 0.1	N.D.
WS-1	11/16	< 0.1	< 0.1	< 0.1	< 0.1	N.D.
WS-2	11/16	< 0.1	< 0.1	< 0.1	< 0.1	N.D.
WS-3	11/16	< 0.1	< 0.1	< 0.1	< 0.1	N.D.
WS-4	11/16	< 0.1	< 0.1	< 0.1	< 0.1	N.D.

NOTES: * - EPA Method 8080 compounds.

N.D. - Not detected; see laboratory reports for detection limits.

