

**RECEIVED**

*By dehloptoxic at 8:46 am, Nov 09, 2006*

C A M B R I A



## Transmittal

**To:** Jerry Wickham

---

**Agency:** Alameda County Health Agency

---

**Address:** 1131 Harbor Bay Parkway  
Alameda, CA 94502-6577

---

**Phone:** (510)567-6791

---

**From:** Ana Friel

---

**Phone:** (707) 268-3812

---

**Date:** November 8, 2006

---

**Re:** Geologic Cross Sections; Shell-branded  
Service Station, 1601 Webster Street,  
Alameda, RO# 2745

---

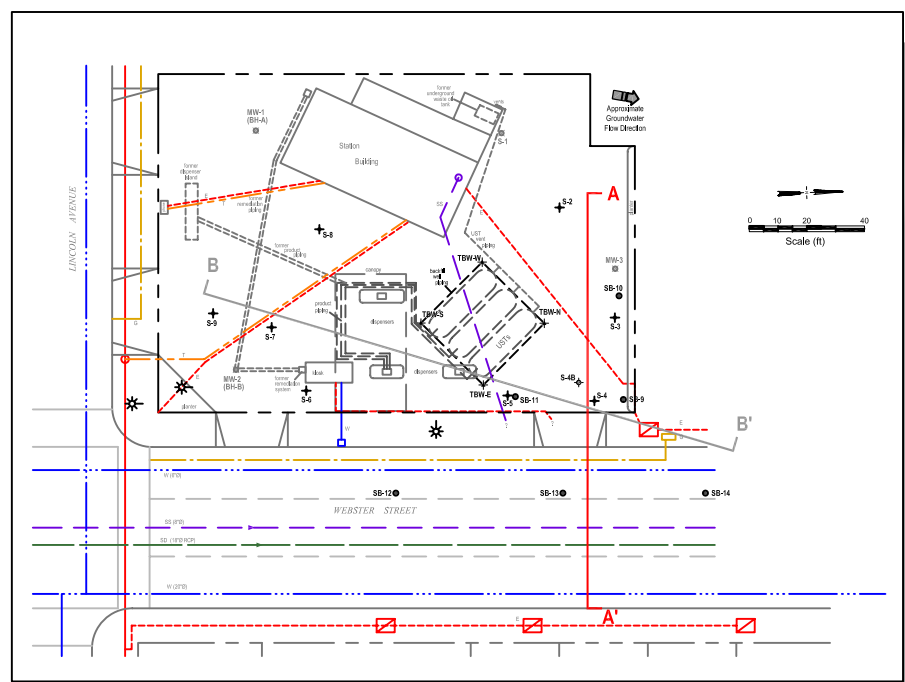
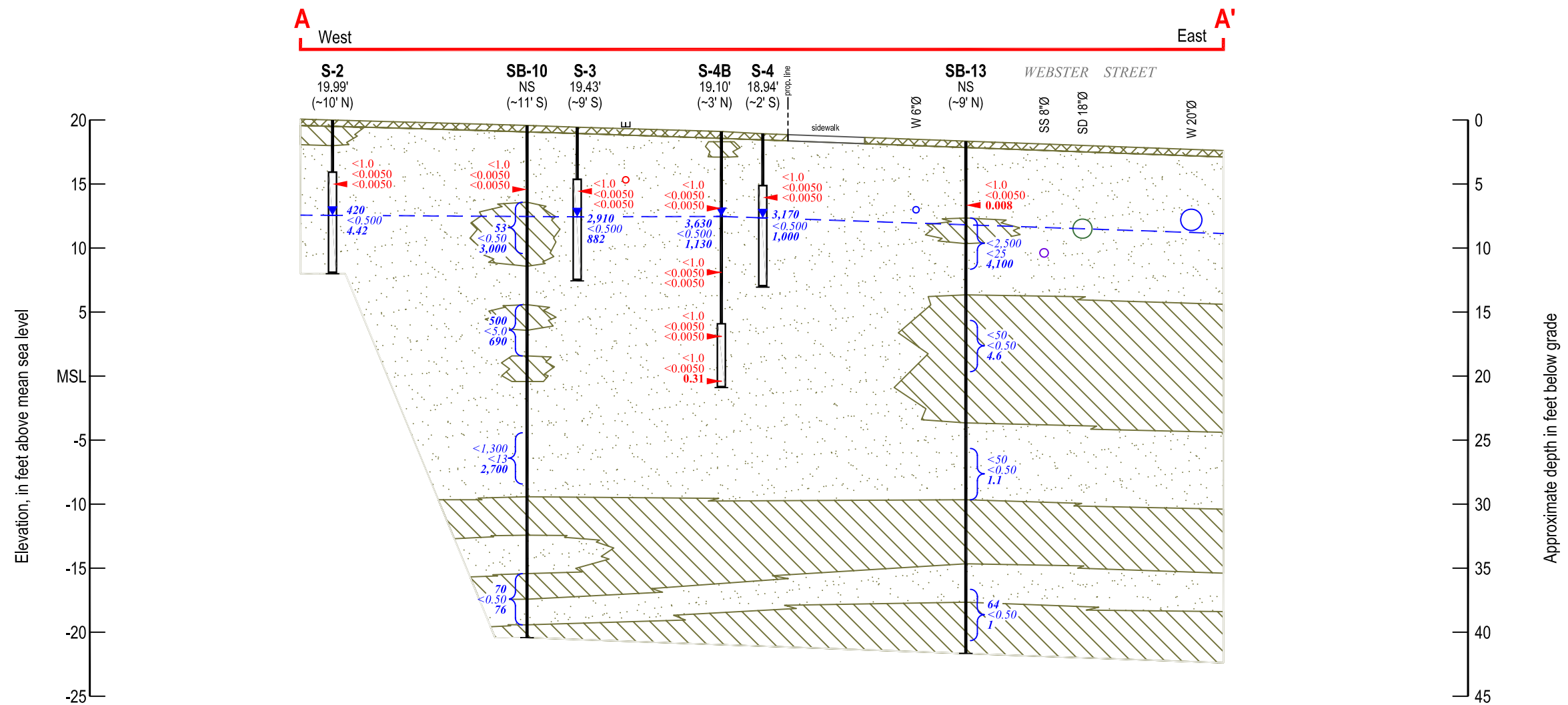
Jerry,

Enclosed are the geologic cross sections for the Shell-branded Service Station located at 1601 Webster Street in Alameda.

Please call me with any questions.

Ana Friel, PG  
Associate Geologist

afriel@cambria-env.com  
(707) 268-3812



**EXPLANATION**

- = Low Permeability Soils
- = Moderate Permeability Soils
- = High Permeability Soils
- Approximate soil sample location
- TPHg  
Benzene  
MTBE Hydrocarbon concentrations in soil, in parts per million
- TPHg  
Benzene  
MTBE Hydrocarbon concentrations in groundwater, in parts per billion
- E Electrical line, approximate depth
- W 6"Ø Water line, 6" diameter
- W 20"Ø Water line, 20" diameter
- SS 8"Ø Sanitary sewer line, 8" diameter
- SD 18"Ø Storm drain line, 18" diameter

**Well ID** — Well Designation  
 Elev. — Rim Elevation, in feet above msl (NS = Not surveyed)  
 (offset) — Offset distance from cross-section line  
 Groundwater Monitoring Well  
 Well Screen Interval  
 Bottom of boring  
 Depth of groundwater - 8/30/06  
 Inferred groundwater depth  
 Grab groundwater sample depth interval (sampled 11/05)

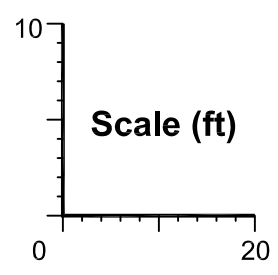
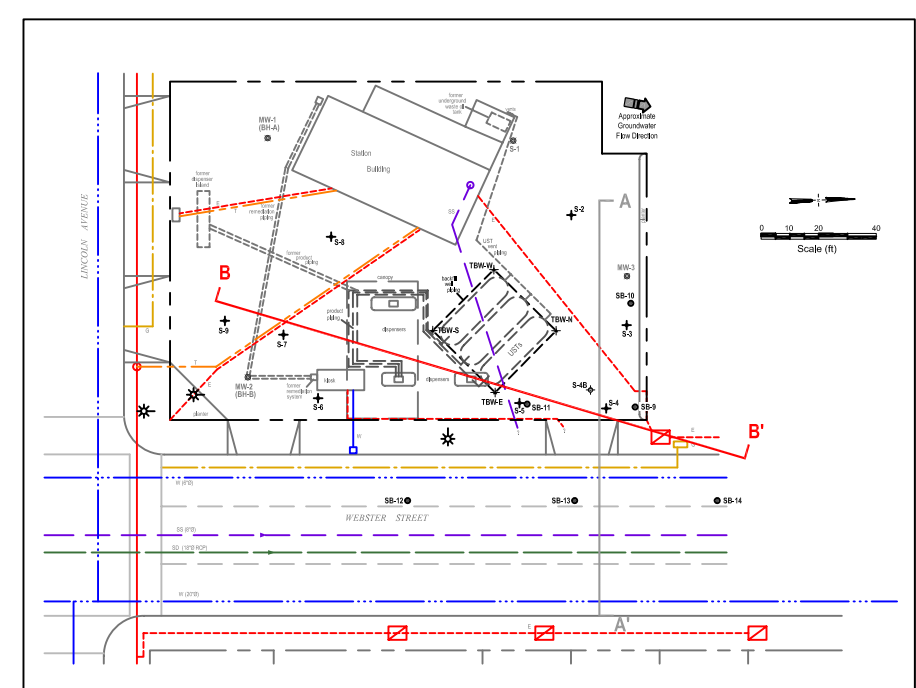
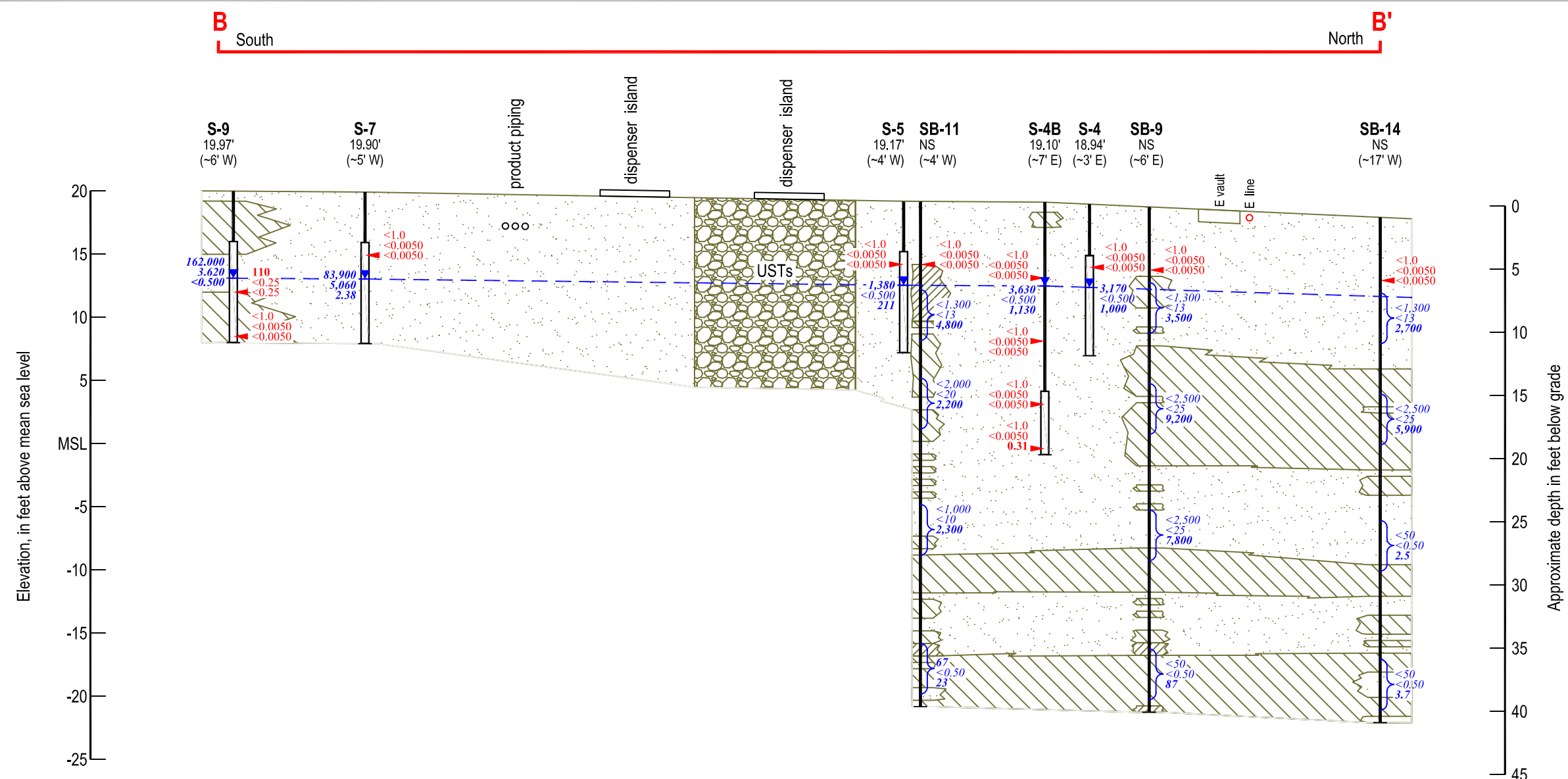


FIGURE  
**1**



**EXPLANATION**

- = Low Permeability Soils
- = Moderate Permeability Soils
- = High Permeability Soils
- Approximate soil sample location
- TPH<sub>g</sub>, Benzene, MTBE Hydrocarbon concentrations in soil, in parts per million
- E Electrical line, approximate depth
- W 6"Ø Water line, 6" diameter
- W 20"Ø Water line, 20" diameter
- Well ID — Well Designation
- Elev. — Rim Elevation, in feet above msl (NS = Not surveyed)
- (offset) — Offset distance from cross-section line
- Groundwater Monitoring Well
- Well Screen Interval
- Bottom of boring
- Depth of groundwater - 8/30/06
- Inferred groundwater depth
- Grab groundwater sample depth interval (sampled 11/05)
- TPH<sub>g</sub>, Benzene, MTBE Hydrocarbon concentrations in groundwater, in parts per billion
- SS 8"Ø Sanitary sewer line, 8" diameter
- SD 18"Ø Storm drain line, 18" diameter

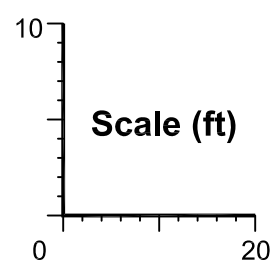


FIGURE  
**2**

**Geologic Cross Section B-B' and  
Utility Location and Depth Map**



C A M B R I A

**Shell-branded Service Station**  
1601 Webster Avenue  
Alameda, California