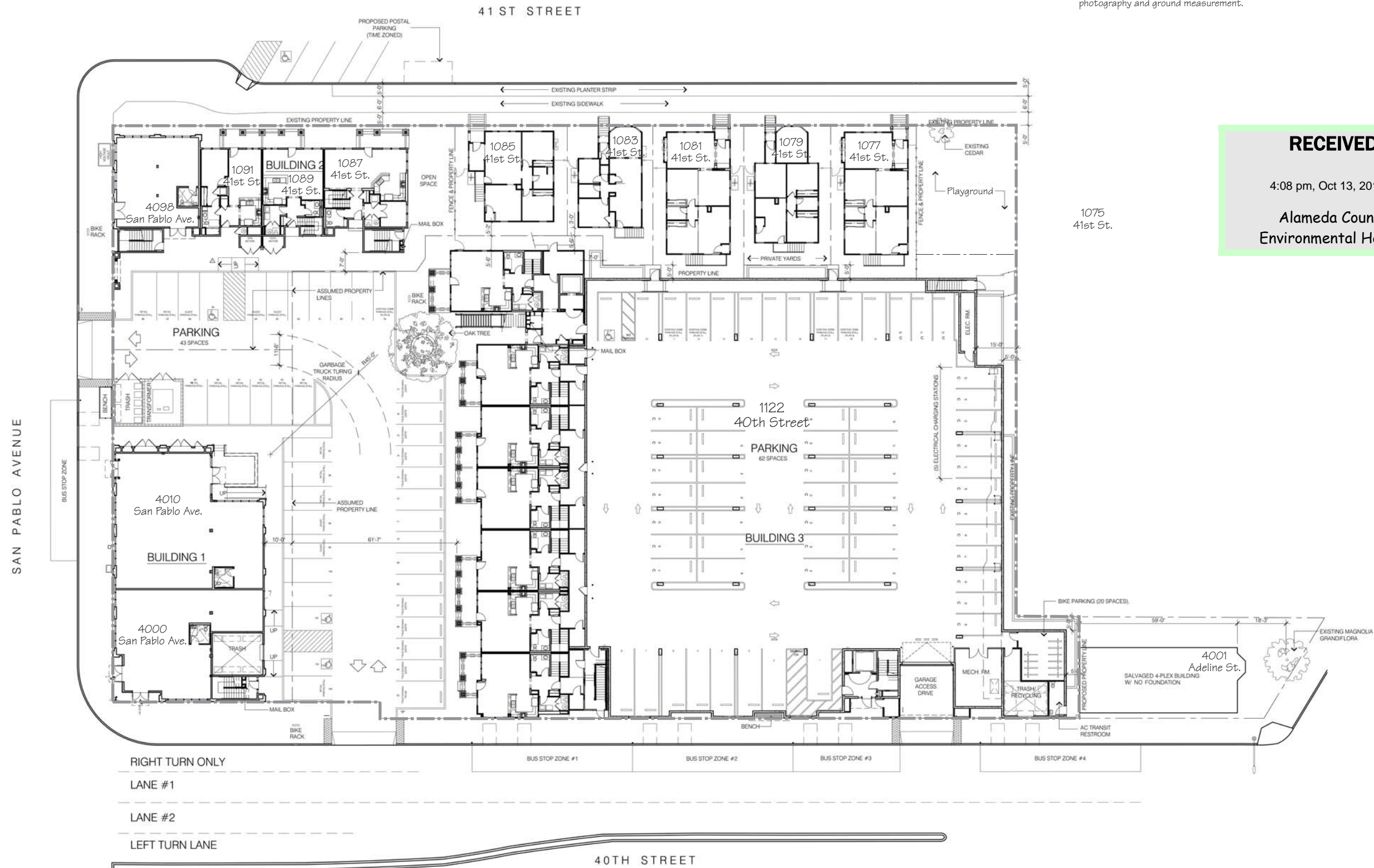




Base Map:
 This base map was prepared from various resources, including information provided by Hunt Hale Jones Architects (Project # 429001.00, Revision Date 12.03.08,) aerial photography and ground measurement.



RECEIVED

4:08 pm, Oct 13, 2010

**Alameda County
 Environmental Health**

PLAN OF REDEVELOPED SITE
 Oak Walk Redevelopment Project
 Emeryville, California

FIG 3

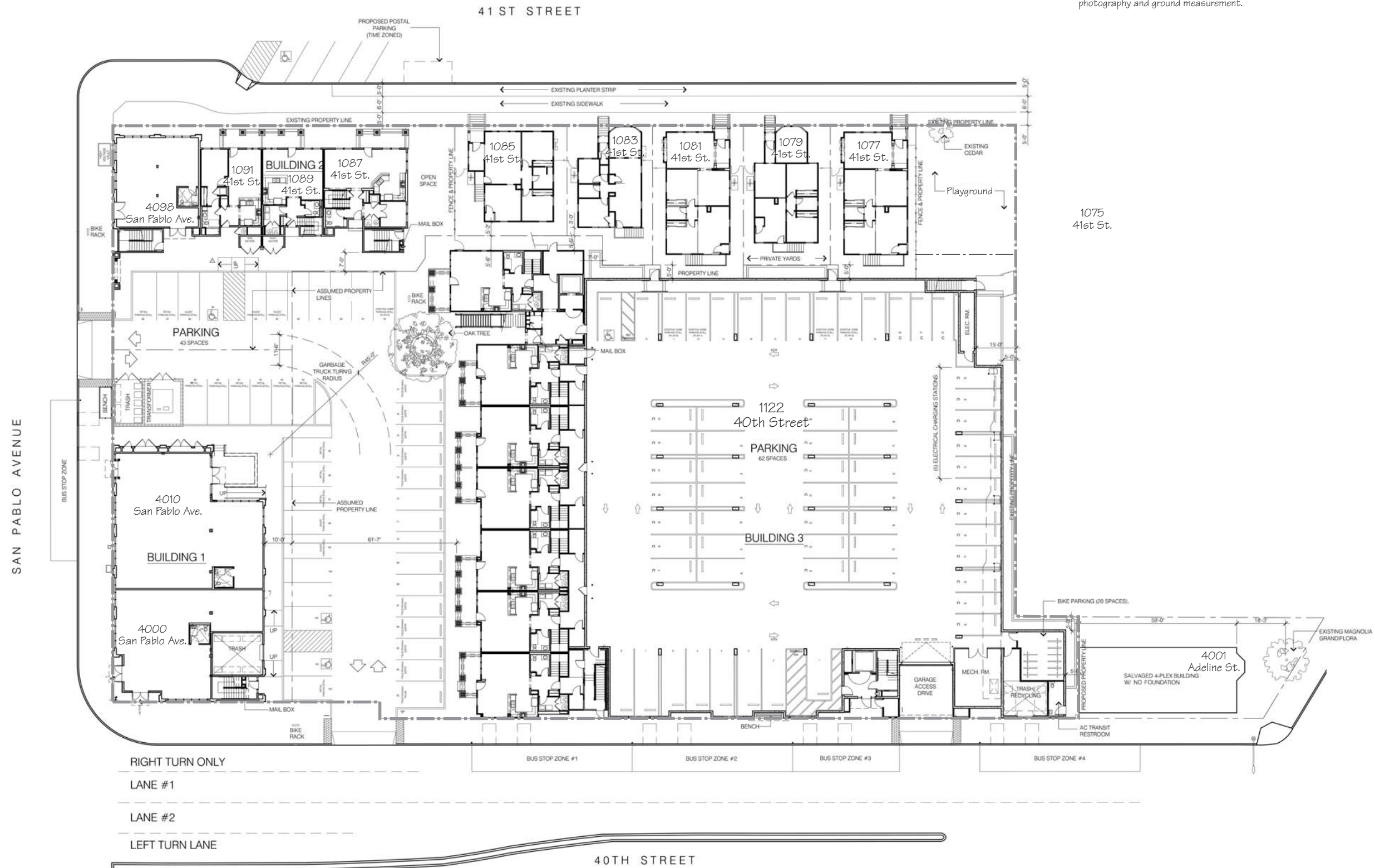
The San Joaquin Company Inc.

Project Number: 0004.086

Drawn by: GNM Date: 07/20/09



Base Map:
 This base map was prepared from various resources, including information provided by Hunt Hale Jones Architects (Project # 429001.00, Revision Date 12.03.08,) aerial photography and ground measurement.



PLAN OF REDEVELOPED SITE
 Oak Walk Redevelopment Project
 Emeryville, California

FIG 3

The San Joaquin Company Inc.

Project Number: 0004.086

Drawn by: GNM Date: 07/20/09