



DATE: 8/25/97

FROM: JOE IOVINO

- Corporate Headquarters: Two Annabel Lane, Suite 220, San Ramon, CA 94583 Fax (510) 327-7347 Voice (510) 327-0200
- Clinical R&D : 3158 Des Plaines Avenue, Suite 10-14, Des Plaines, IL 60018 Fax: (847) 803-8341 Voice: (847) 803-8330
- Sales & Marketing: 1719 Route 10, Suite 310 Parsippany, NJ 07054 Fax: (201) 358-0313 Voice: (201) 358-0800

FAX TO: MS. LOGAN

COMPANY: ALAMEDA COUNTY HEALTH DEPARTMENT

FAX #: (510) 337-9335

# PAGES (INCLUDING THIS SHEET): 3

HARD COPY TO FOLLOW:  YES  NO

COMMENTS : Need to fax Supergen

NOTICE OF CONFIDENTIALITY

Information contained in this facsimile transmittal is privileged and confidential information of the addressed and intended for the use of the intended recipient listed above. If you are neither the intended recipient nor the employee or agent responsible for delivering this message to the intended recipient, you are hereby notified that any disclosure, copying, distribution or the taking of any action in reliance on the contents of this transmittal is strictly prohibited. If you have received this telecopy in error, please immediately notify us by telephone (510) 327-0200 to arrange for return of the original documents to us.



FAX TRANSMISSION

DECON Environmental Services, Inc.  
23490 Connecticut Street  
Hayward, CA 94545  
Phone: (510) 732-6444  
Fax: (510) 782-8584

TO: Joe Iovino FAX: (510) 327-7347  
COMPANY: Supergen PHONE: (510) 327-0200  
FROM: Bill Bassett DATE: 8-22-97 TIME: 4PM

REFERENCE: \_\_\_\_\_

TOTAL NUMBER OF PAGES SENT (Including Cover Sheet): 2

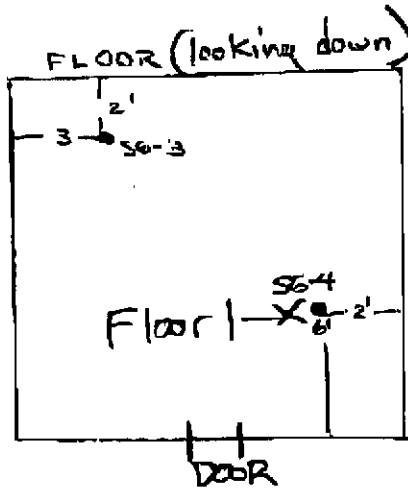
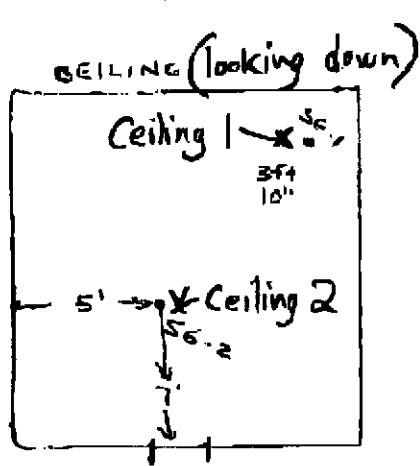
Original to follow by:

U.S. Mail  Express Overnight Mail  
 Courier  No Hard Copy to Follow

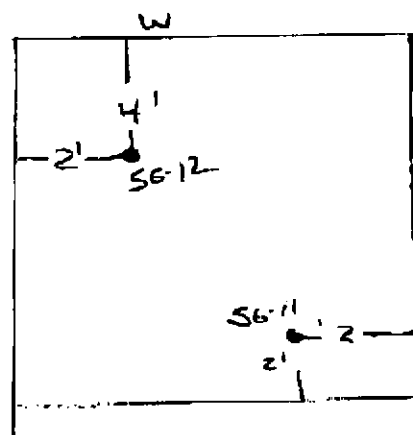
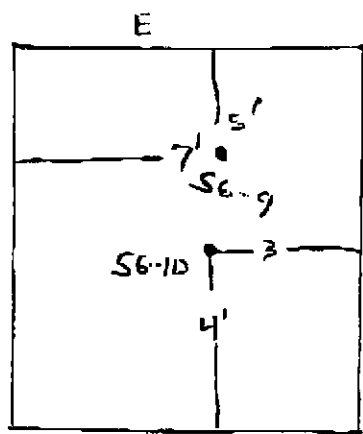
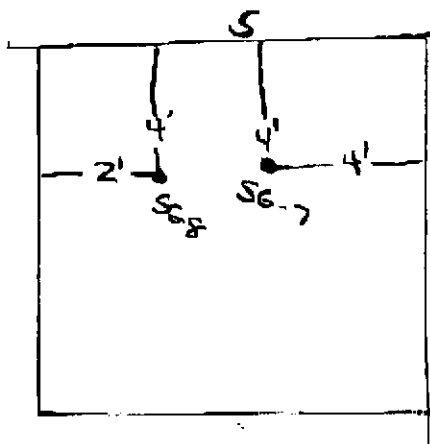
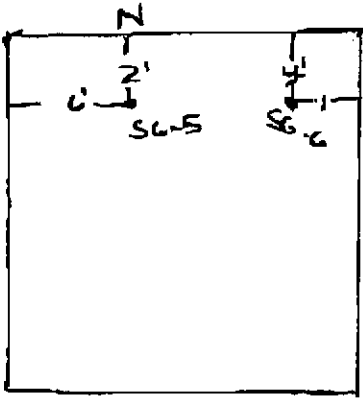
COMMENTS:

Joe -  
Field sketch of sampling locations.  
- Bill -

~~8519186~~



walls



COUNTER TOPS  
 SG-13 = L SIDE  
 SG-14 = R SIDE  
 SG-15 = INSIDE L CABINET

SG-16-<sup>19</sup>22 - BLANKS W/H<sub>2</sub>O  
 SG-20-23 - BLANK W/O H<sub>2</sub>O  
 SG-24 EMPTY JAR