



Date: October 16, 1997

To: ALAMEDA COUNTY HEALTH AGENCY
Madhulla Logan
Phone: 510-567-6764
Fax: 510-337-9335

From: CB COMMERCIAL
Mike Furay
Phone: 510-930-2022
Fax: 510-930-2056

Pages: 4

Subject: Sorry we didn't see you on Tuesday. Ed took 6 samples see attached floor plans. Verbally Ed just told me that samples 1-5 were ND. Sample 6 showed some level. He should be faxing or sending you the results. Please let me know where we go from here.

cc: Sam G.
Nels Johnson

829-5493

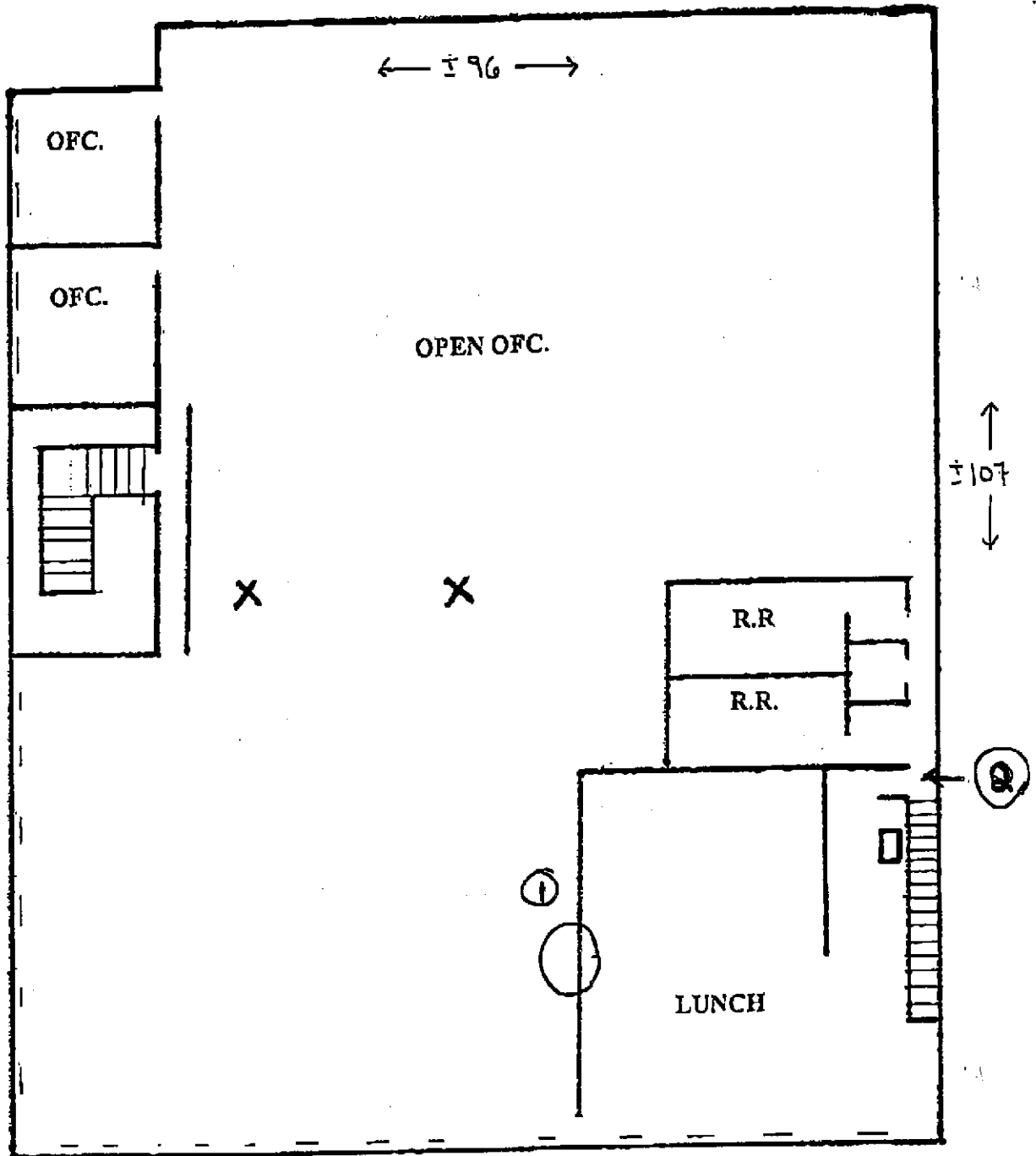
848-3618

10/14/77 - @ about 5' level

6780 Sierra Court, #1, Dublin

2nd Floor Office Space

±10,272 Sq. Ft.

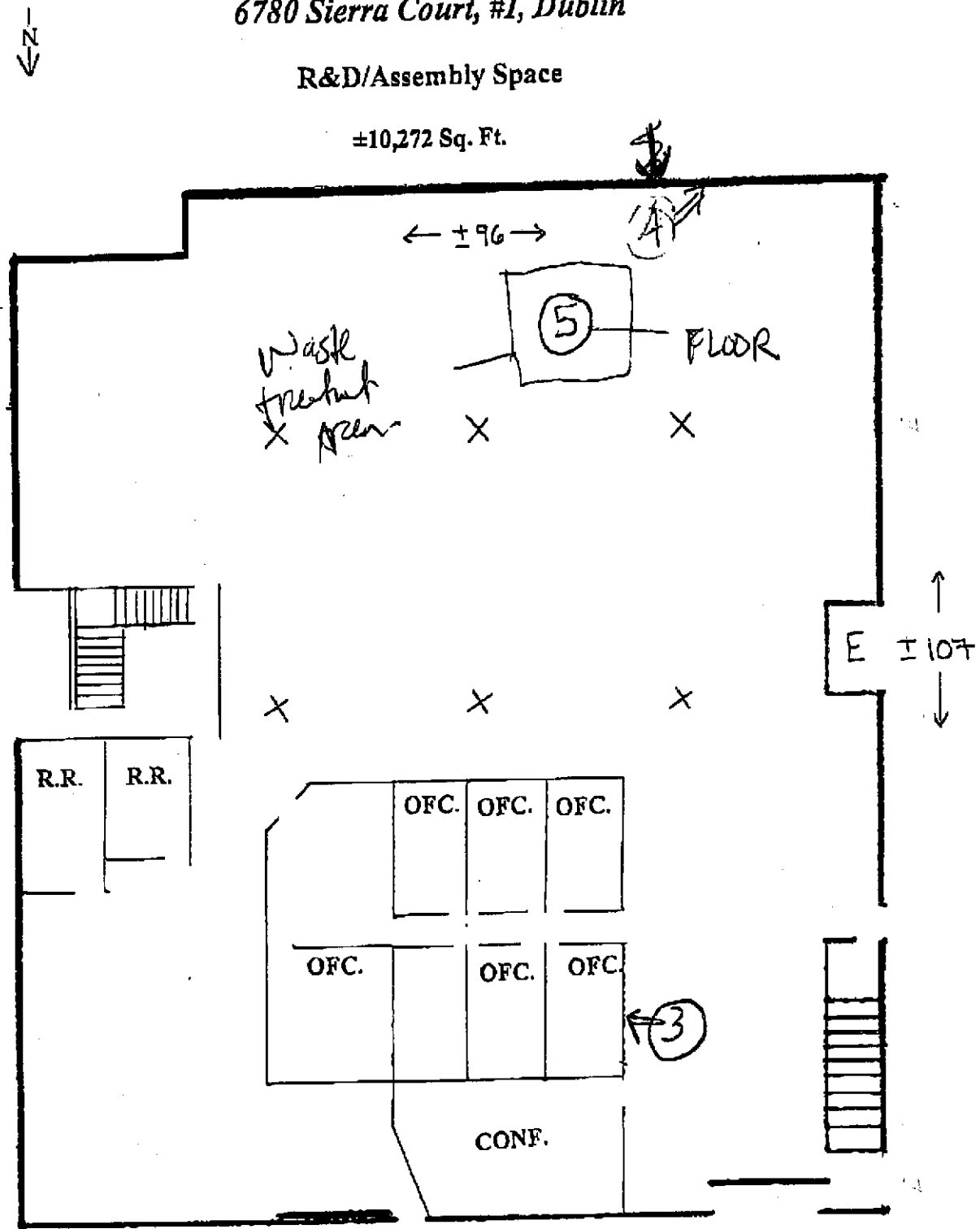


Not to scale

6780 Sierra Court, #1, Dublin

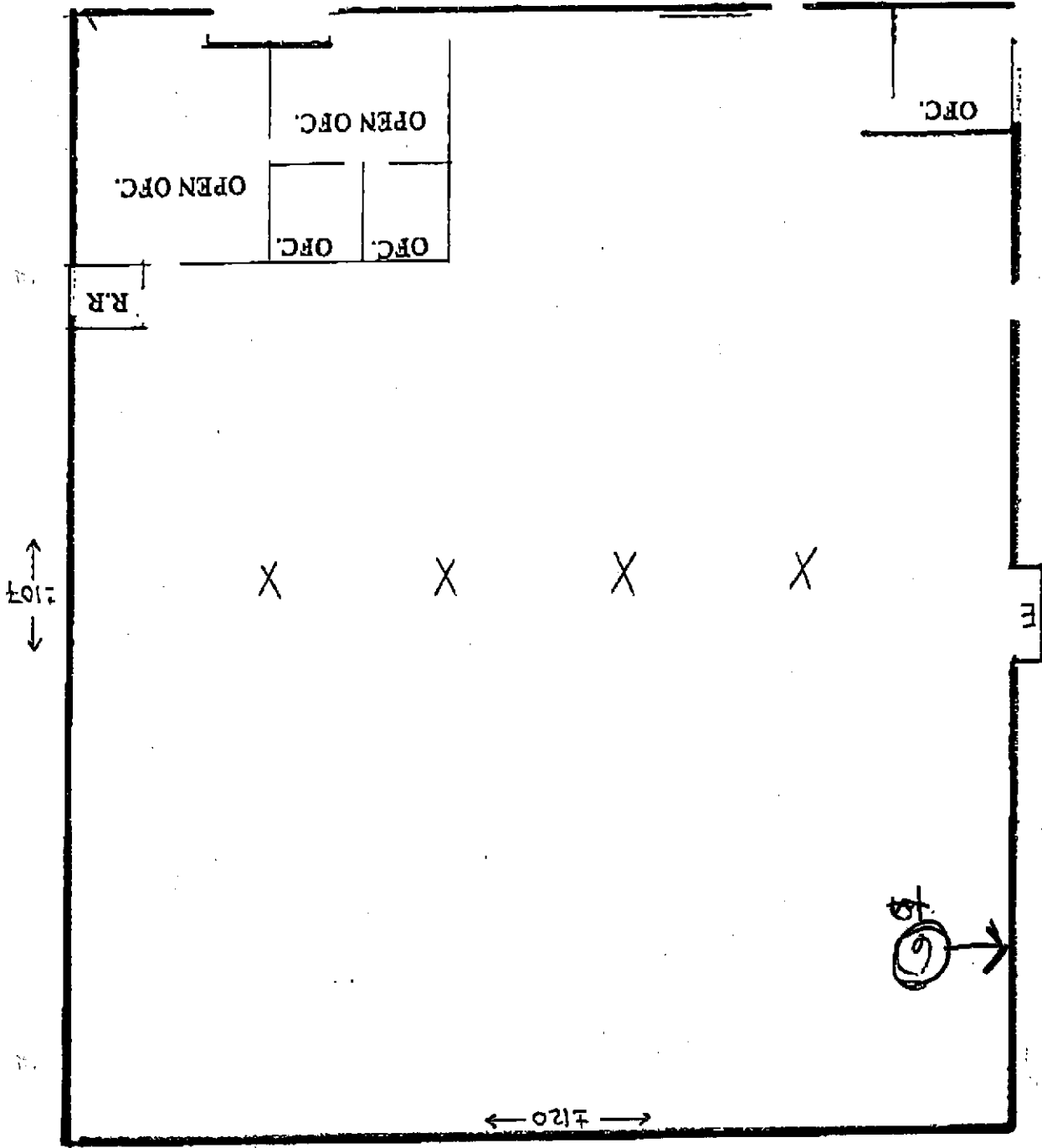
R&D/Assembly Space

±10,272 Sq. Ft.



Not to scale

Not to scale



±12,840 Sq. Ft.

Warehouse Space

6780 Sierra Court, #J, Dublin

←N→