

CITY OF OAKLAND PWA/ENVIRONMENTAL SERVICES DIVISION

250 FRANK H. OGAWA PLAZA, SUITE 5301
OAKLAND, CA 94612-2034

FAX

DATE: June 7, 2000

TO: Barney Chan

FAX #: 337-9335

FROM: Mark Jones

PHONE #: 238-7314

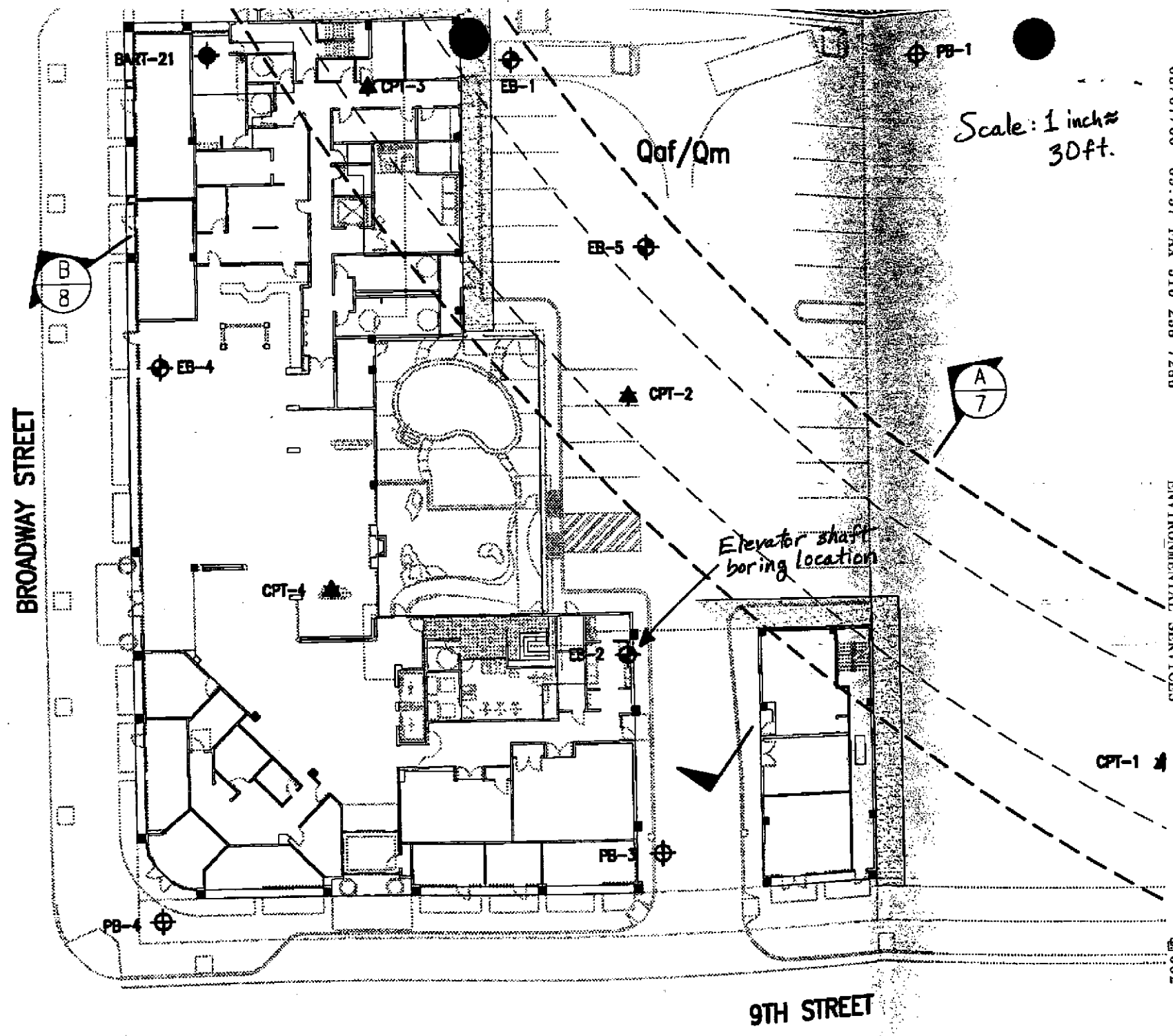
FAX #: (510) 238-7286

Number of pages including this page: 2

Comments: Map of boring location from Hays's
geotech report (Dec. 9, 1999).

MJ

Scale: 1 inch = 30ft.



BASE: PROVIDED BY PATRI. MERKER, ARCHITECTS, SAN FRANCISCO, CA., DATED AUGUST 19, 1998. 9