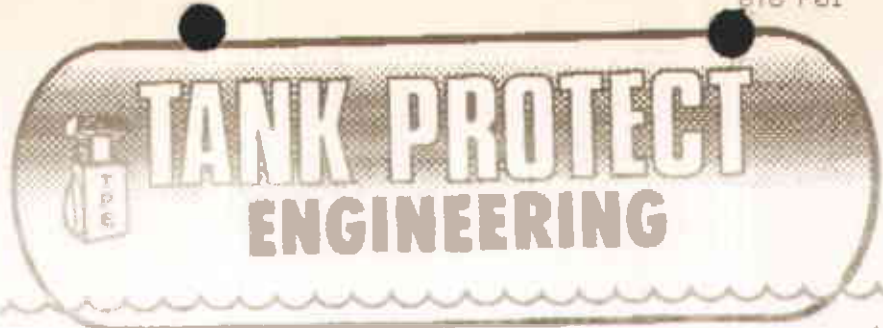


(415) 429-8088

(800) 523-8088

FAX (415) 429-8089



Of Northern California

FROM: TANK PROTECT ENGINEERING

568-3706

TO: Pamela County Health Care Services Agency

RE: 21153 Foothill Boulevard, Hayward, CA

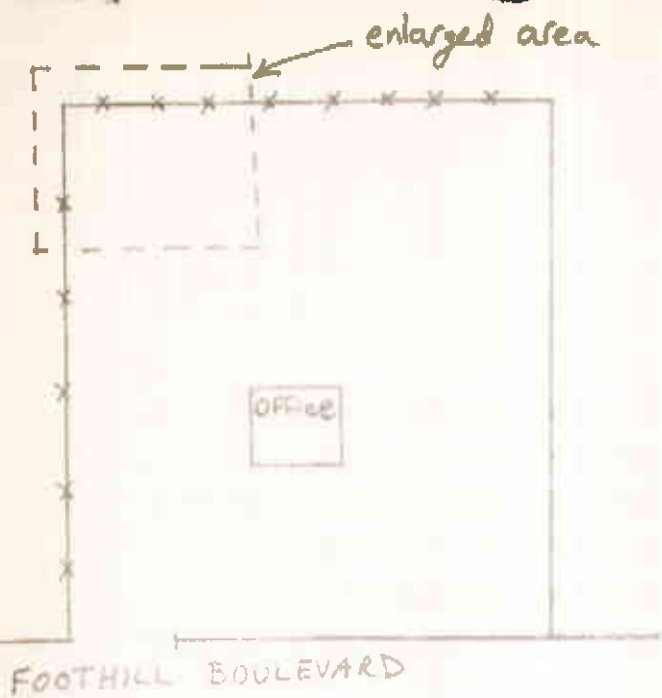
DATE: 8/14/91

ATTN: Pamela Evans

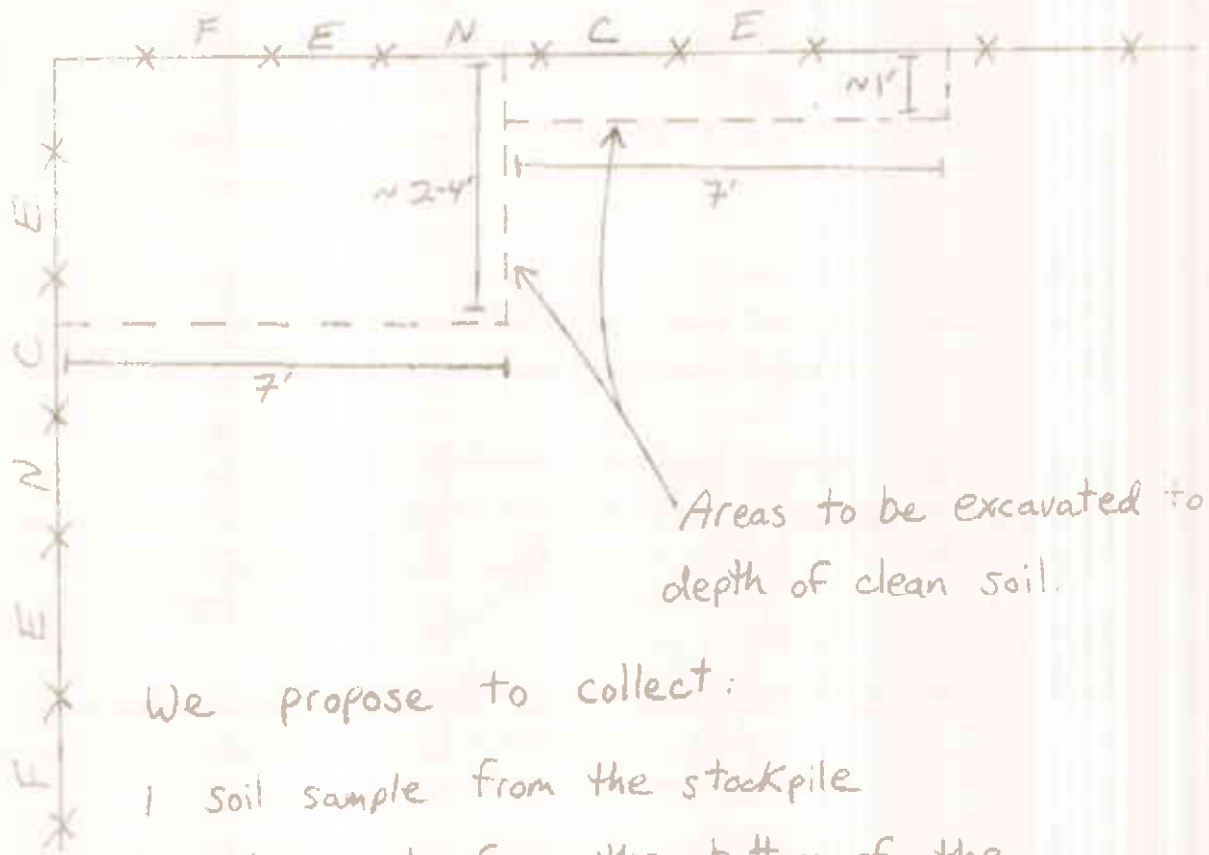
NO. OF PAGES: 6
(Include cover sheet)

If all pages are not received please notify sender.

MESSAGE:



Discount Auto Sales
 21153 Foothill Blvd
 Hayward, CA 94541



We propose to collect:

- 1 soil sample from the stockpile
- 1 soil sample from the bottom of the excavation when we have reached clean soil.

APPENDIX

SAMPLE HANDLING TECHNIQUES

Soil and groundwater samples will be packaged carefully to avoid breakage or contamination, and will be delivered to the laboratory at proper storage temperatures. The following sample packaging requirements will be followed.

- . Sample bottle/sleeve lids will not be mixed. All sample lids will stay with the original containers and have custody seals affixed to them.
- . Samples will be secured in coolers to maintain custody, control temperature, and prevent breakage during transportation to the laboratory.
- . A chain-of-custody form will be completed for all samples and accompany the sample cooler to the laboratory.
- . Ice, blue ice, or dry ice (dry ice will be used for preserving soil samples collected for the Alameda County Water District) will be used to keep samples at a constant temperature during transport to the laboratory.
- . Each sample will be identified by affixing a pressure sensitive, gummed label, or standardized tag on the container(s). This label will contain the site identification, sample identification number, date and time of sample collection, and the collector's initials.

All groundwater sample containers will be precleaned and will be obtained from a State Department of Health Services certified analytical laboratory.

Sample Control/Chain-of-Custody: All field personnel will refer to this work plan to verify the methods to be employed during sample collection. All sample gathering activities will be recorded in the site logbook; all sample transfers will be documented in the site logbook; samples are to be identified with TPE labels and all sample bottles are to be custody-sealed.

All information is to be recorded in waterproof ink. All TPE field personnel are personally responsible for sample collection and the care and custody of collected samples until the samples are transferred or properly dispatched.

The custody record will be completed by the field technician who has been designated by the TPE project manager as being responsible for sample shipment to the appropriate laboratory. The custody record will include, among other things, the following information: site identification, name of person collecting the samples, date and time samples were collected, type of sampling conducted (composite/grab), location of sampling station, number and type of containers used, and signature of the TPE person relinquishing samples to a non-TPE person with the date and time of transfer noted. The relinquishing individual will also put all the specific shipping data on the custody record.

Site log books will be maintained by a designated TPE field employee to record, for each sample, site identification, sampling locations, station numbers, dates, times, sampler's name, designation of the samples as a grab or composite, notation of the type of sample (e.g. groundwater, soil boring, etc.), preservatives used, on-site measurement data, and other observations or remarks.

APPENDIX

WASTE HANDLING AND DECONTAMINATION PROCEDURES

Decontamination: Any drilling, sampling or field measurement equipment that comes into contact with soils or groundwater will be properly decontaminated prior to its use at the site and after each incident of contact with the soils or groundwater being investigated. Proper decontamination is essential to obtain samples that are representative of environmental conditions and to accurately characterize the extent of soil and groundwater contamination. Hollow-stem auger flights and the drill bit will be steam-cleaned between the drilling of each well.

All sample equipment, including the split-tube sampler and brass tubes, will be cleaned by washing with tri-sodium phosphate detergent, followed by sequential rinsing with tap water, and deionized water.

Waste Handling: Waste materials generated during site characterization activities will be handled and stored as hazardous waste and will be stored on site in appropriately labeled containers. Waste materials anticipated include drill cuttings, development and purge water, water generated during aquifer testing, water generated during decontamination, and used personnel protection equipment such as gloves and Tyvek. The site owner will be responsible for providing the storage containers and will be responsible for the disposal of the waste materials. Drill cuttings from individual borings will be stored separately in drums or covered by plastic sheeting and the appropriate disposal procedure will be determined by the site owner or TPE following receipt of the soil sample analytical results. Drums or plastic sheeting will be labeled to show material stored, known or suggested contaminant, date stored, expected removal date, company name, contact, and telephone number.