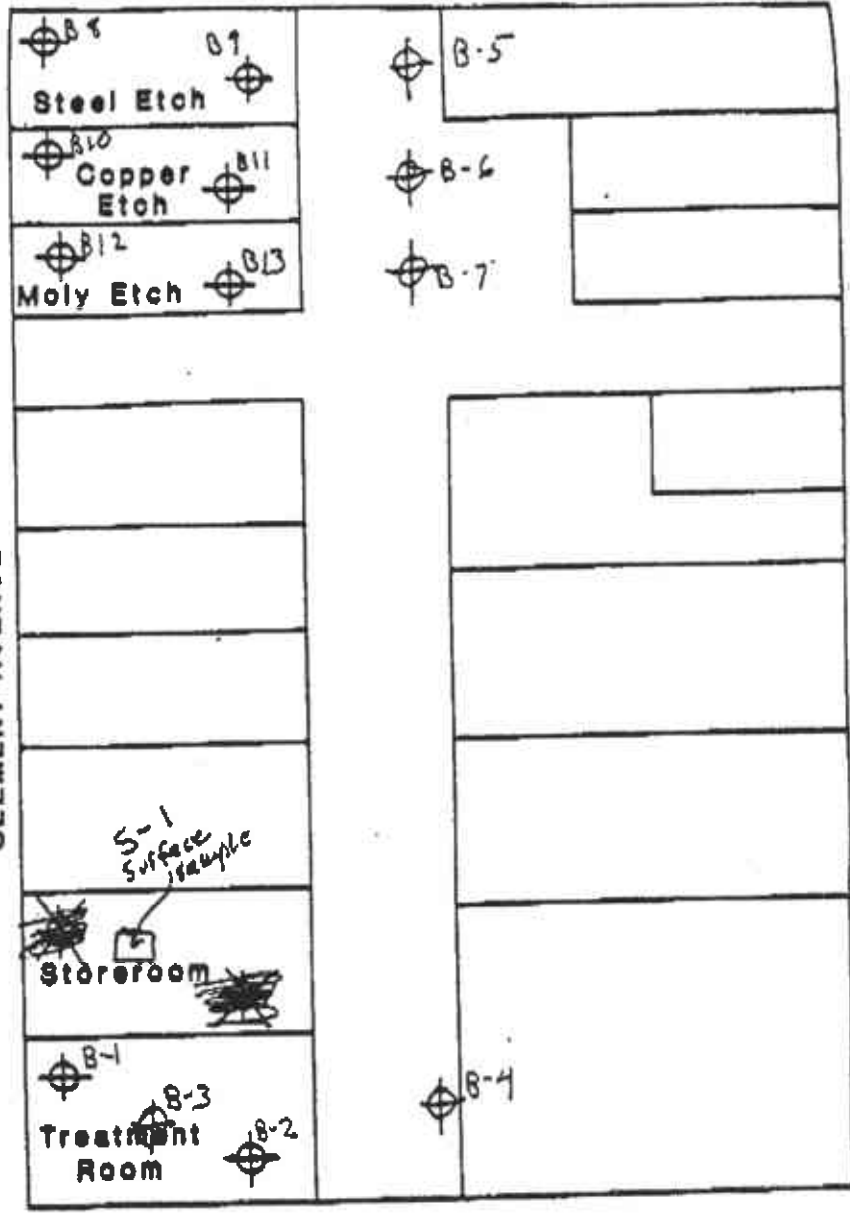


*Changes in blue
by Arw Levi
Co. Health.*

CLEMENT AVENUE



LEGEND

wgf

⊕ Proposed Soil Sample Locations

Base: CHIPS Environmental Consultants



**Kaldveer Associates
Geoscience Consultants**
A California Corporation

PROPOSED SOIL SAMPLE LOCATIONS

1829 CLEMENT AVENUE
Alameda, California

PROJECT NO.	DATE	Figure 1
KE1176-1	December 1989	

DATE: FEB 15 1980

Units

F. N. Job # 2074

Water

mg / L

Date

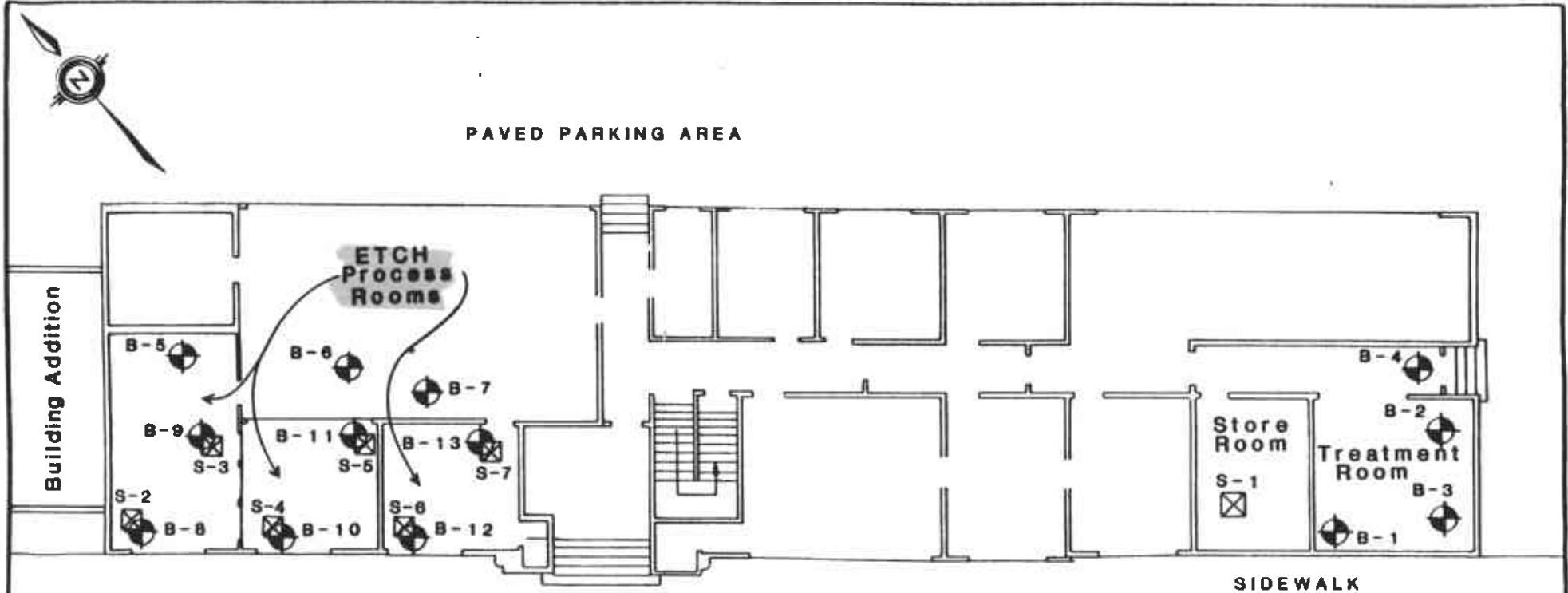
X (8.1) Bulk

X mg / kg

CLIENT ID	P. N. ID	CN	As	Be	Cr	Cu	Mo	Pb	PHENOLS	pH
S-1	01A	200	14	53	800	2900	630	120	0.94	9.0
B1-0.5 B2-0.5	02A	60	6.6	ND	28	4	23	4	ND	7.2
B1-3 B2-3	03A	12	1.0	↓	42	13	4	2	ND	6.9
B1-6 B2-6	04A	9.7	ND	↓	35	8	4	2	↓	7.7
B3-0.5	05A	7.7	↓	↓	31	4	ND	3	↓	6.6
B3-3	06A	8.3	0.6	↓	47	18	5	2	↓	8.7
B3-6	07A	1.1	ND	↓	28	9	3	2	↓	7.8
B4-0.5	08A	1.1	↓	↓	30	8	3	4	↓	5.4
B4-3	09A	0.5	1.6	↓	33	7	3	1	↓	7.6
B4-7	10A	ND	ND	↓	37	13	3	2	0.52	7.8
TTLIC			500	75	500	2500	3500	1000		

FEB 15 1980 16:36

PAVED PARKING AREA



SIDEWALK

Clement Avenue

APPROXIMATE SCALE IN FEET



LEGEND

-  B-1 Approximate Location of Exploratory Boring
-  S-1 Surface Sample

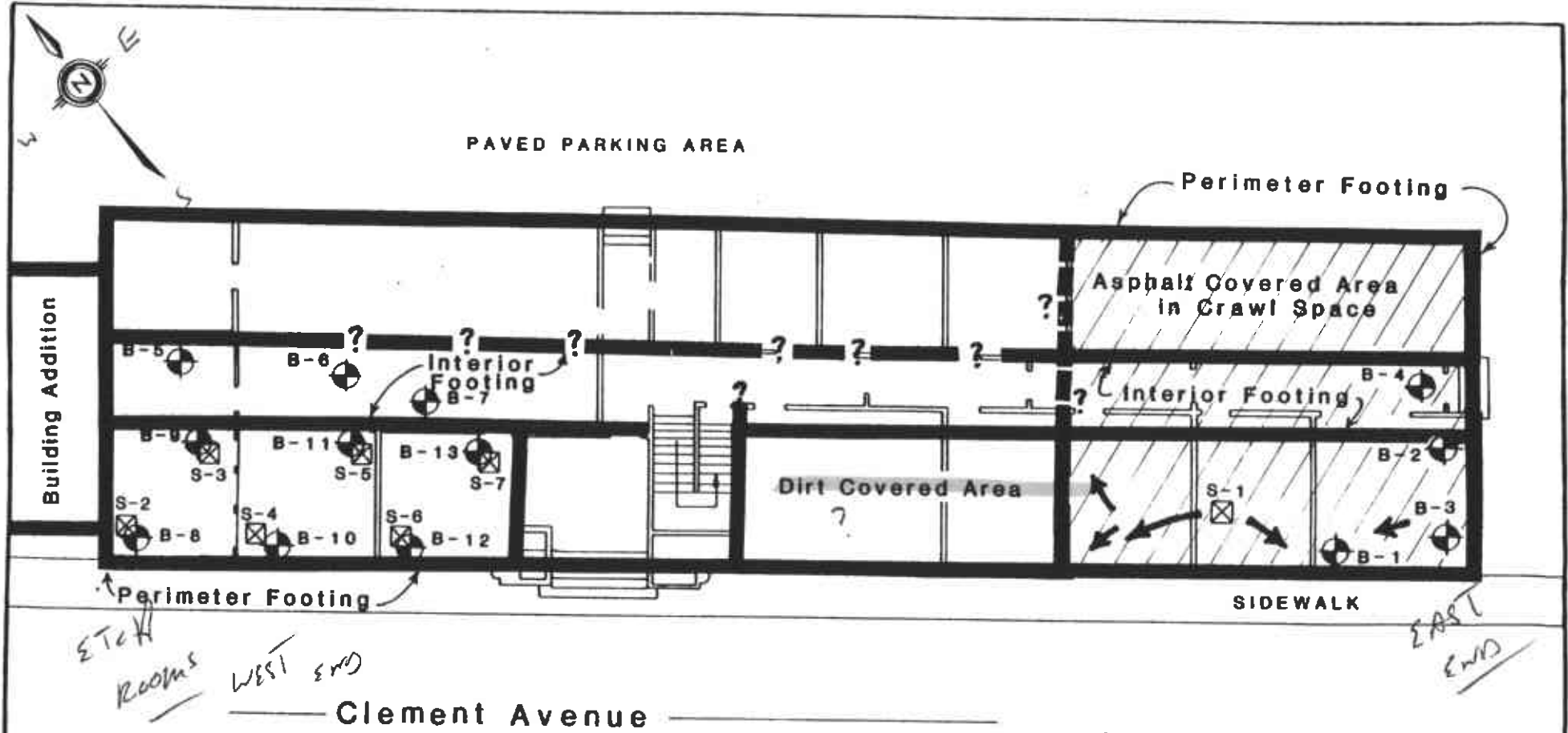


Kaldveer Associates
Geoscience Consultants
A California Corporation

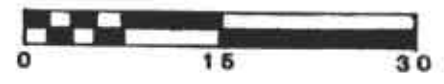
SITE PLAN

1829 CLEMENT AVENUE
Alameda, California

PROJECT NO	DATE	Figure 2
KE1179-1	April 1990	



APPROXIMATE SCALE IN FEET



LEGEND

- B-1 Approximate Location of Exploratory Boring
- S-1 Surface Sample
- Apparent Drainage Flow Pattern on Asphalt Covered Area



Kaldveer Associates
 Geoscience Consultants
 A California Corporation

CRAWL SPACE FEATURES

1829 CLEMENT AVENUE
 Alameda, California

PROJECT NO	DATE	Figure 3
KE1179-1	April 1990	