

**Erler &
Kalinowski, Inc.**

Consulting Engineers and Scientists

1730 So. Amphlett Blvd., Suite 320
San Mateo, California 94402
(650) 578-1172
Fax (650) 578-9131

LETTER OF TRANSMITTAL

TO: Susan L. Hugo
Alameda County Health Agency
1131 Harbor Bay Parkway
2nd Floor
Alameda, CA 94502

DATE: 4 June 1999
PROJ. NO. 990016.00
SUBJECT: 64th Street
Properties

WE ARE SENDING YOU THE FOLLOWING:

- 1 copy of Sanborn Map dated 1903
- 1 copy of Sanborn Map dated 1911

REMARKS:

Requested Sanborn Maps of the 64th Street Properties, located in Emeryville, California, are enclosed. I have highlighted the slough on both maps. The slough appears to extend in a northeasterly direction from the intersection of 63rd Street and Overland Avenue. The slough does not appear on the next Sanborn Map (1950).

COPY TO:

ENVIRONMENTAL
PROTECTION
99 JUN -7 PM 3:37

Very truly yours,

ERLER & KALINOWSKI, INC.

Derby Davidson, P.E.

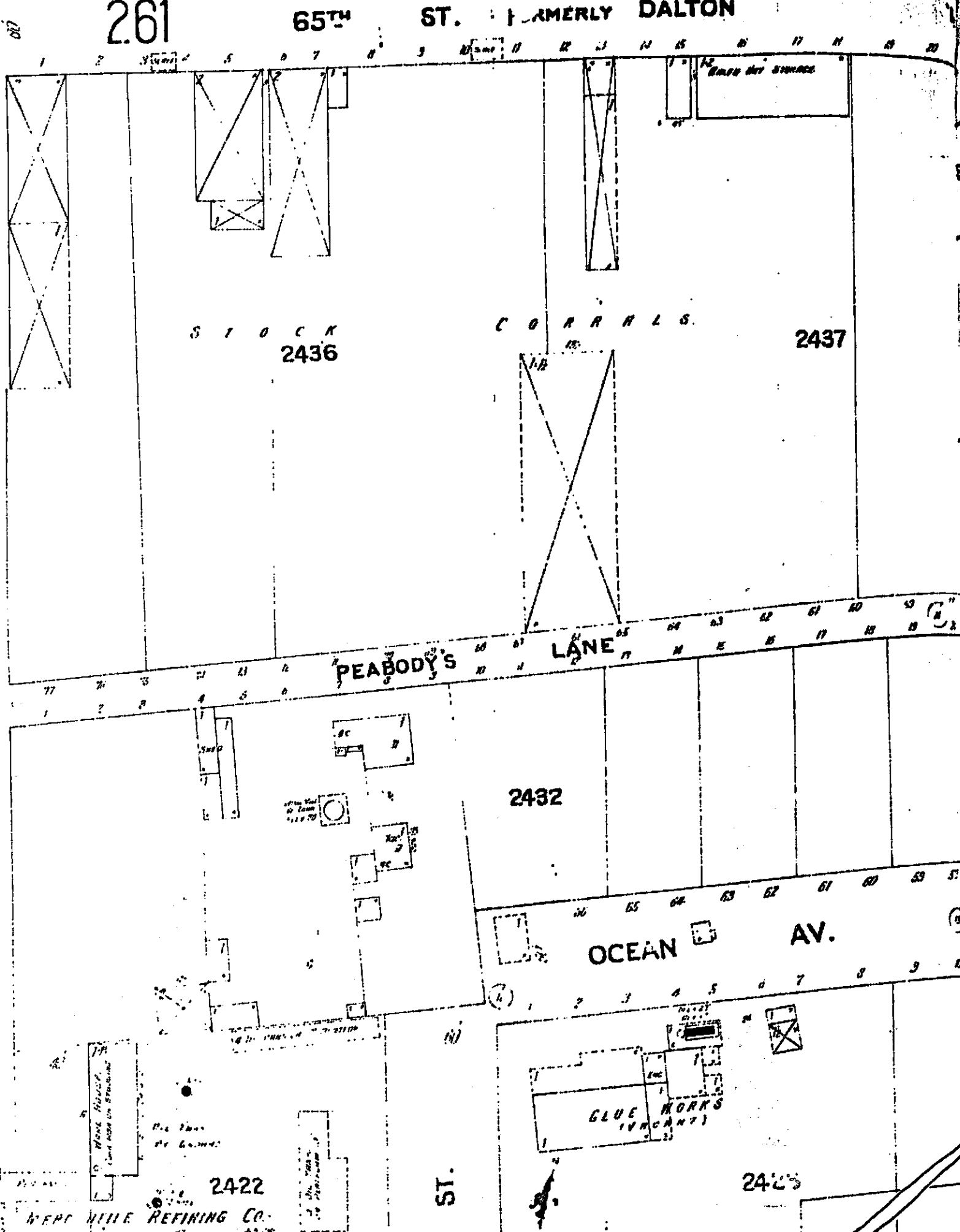
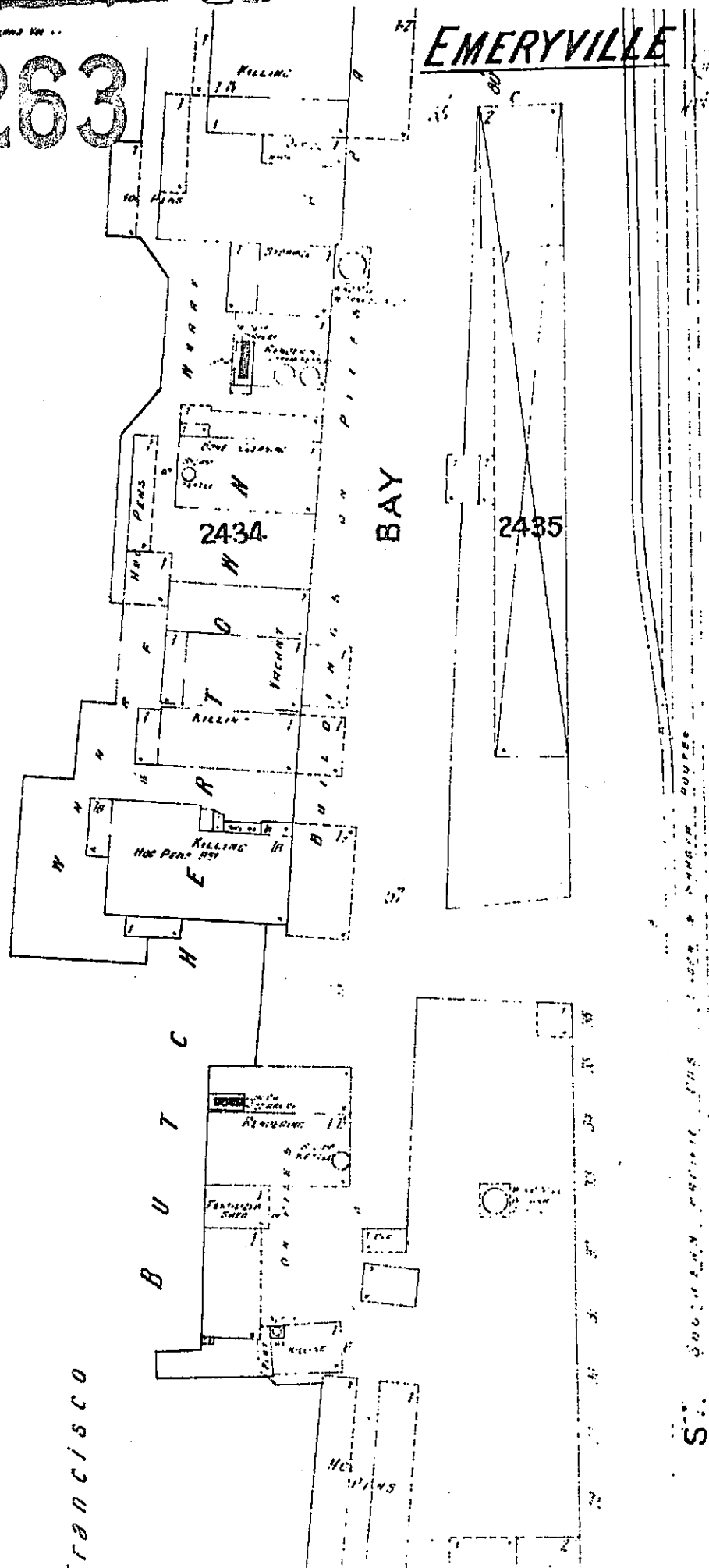
*If enclosures are not as noted,
please advise us at once.*

263

EMERYVILLE

261

65TH ST. FORMERLY DALTON



2416

2432

2411

2423

2422
WERT HILL REFINING CO.

EMERYVILLE

Bay of San

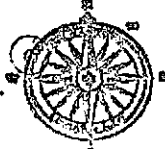
2421

3RD

BAYLE LAGOSTE & CO
FERTILIZER & FINE WORKS

2420

FERTILIZER W/HO



The Sanborn Library, LLC

This Sanborn Map™ is a certified copy produced by Environmental Data Resources, Inc. under arrangement with The Sanborn Library, LLC. Information on this Sanborn™ Map is derived from Sanborn field surveys conducted in:

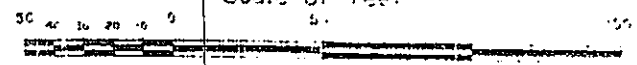
1903

KLS

Best Available Copy

Reproduction in whole or in part of any map of The Sanborn Library, LLC may be made without the written permission from The Sanborn Library, LLC.

Scale of Feet



2406

263

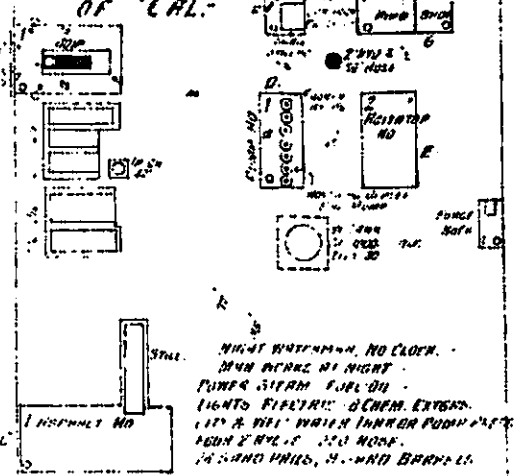
OVERLAND AV.

63RD ST.

2408

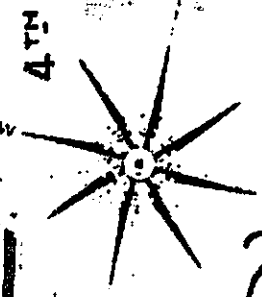
San Francisco

Bay of



2419

COOPER SHED



263

OIL REFINERY

2406
PARAFFINE PRINT CO.

MFRS OF ROOFING & BUILDING PAPER AND OIL REFINERY

WARE HOUSE. WATER WHEELS INSIDE.

2388

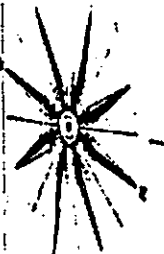
ROOFING ROOM.

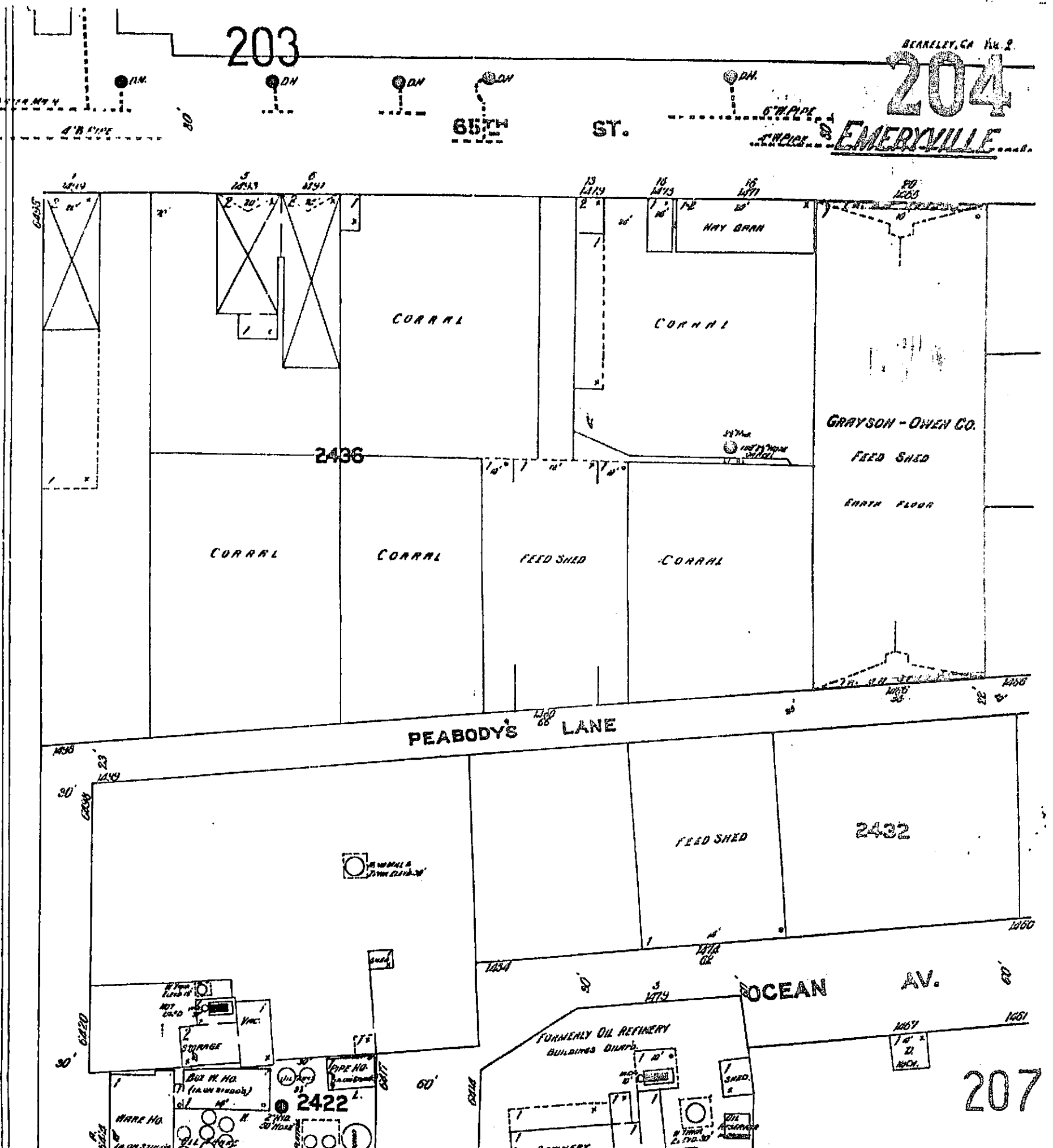
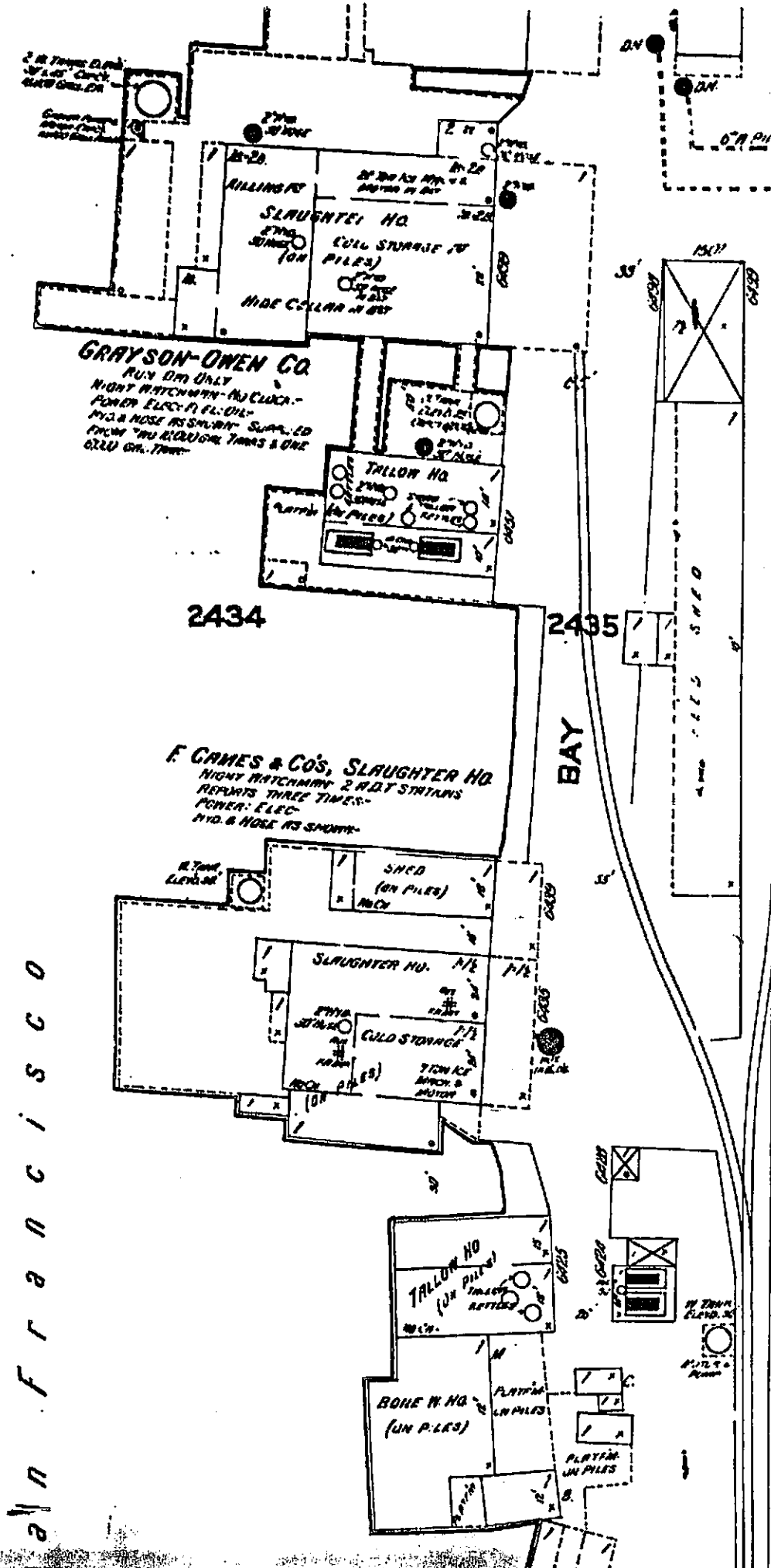
WARE HOUSE.

3RD ST.

2402

2395





San Francisco

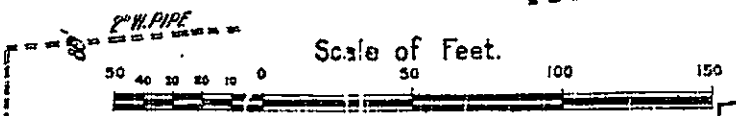
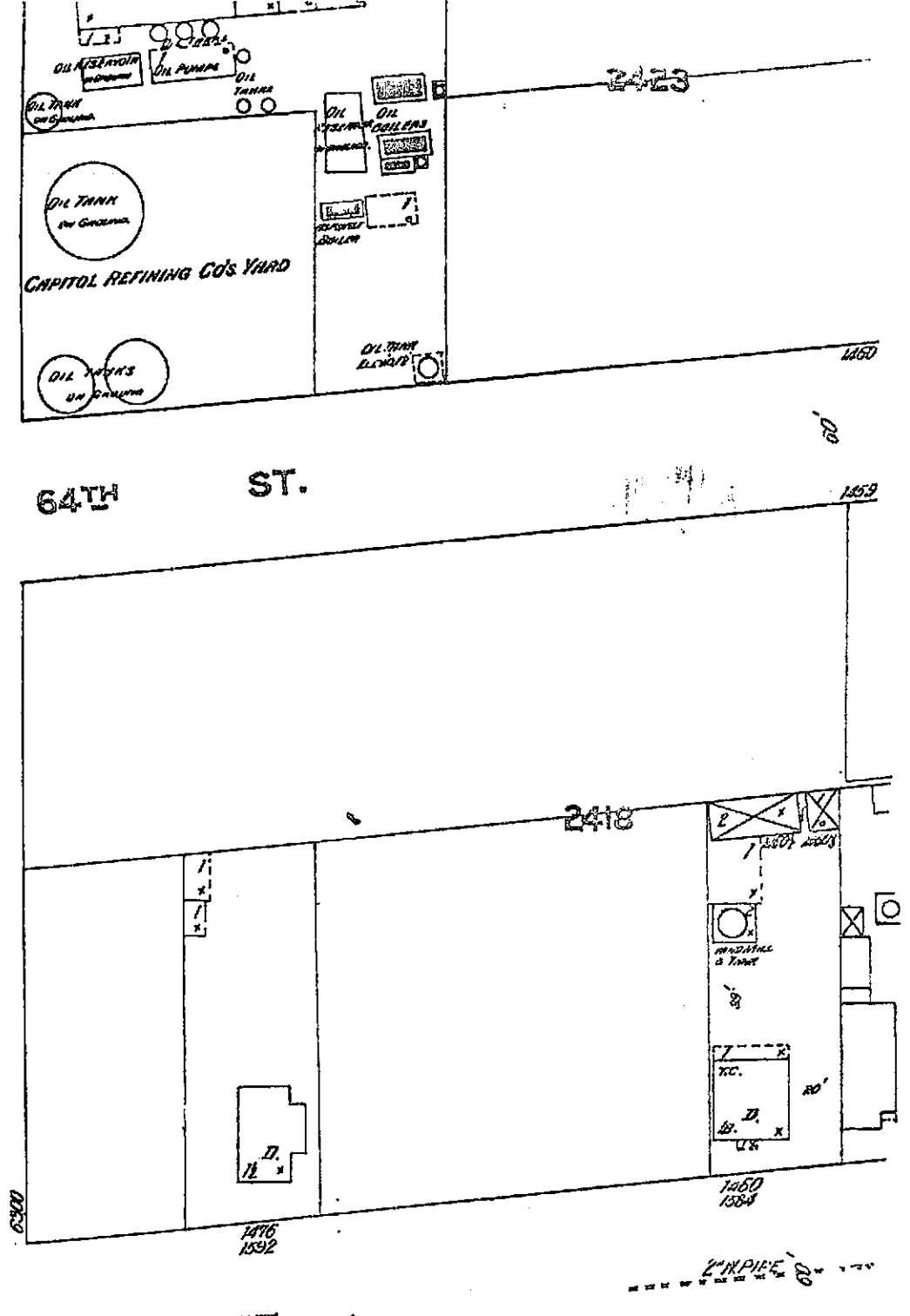
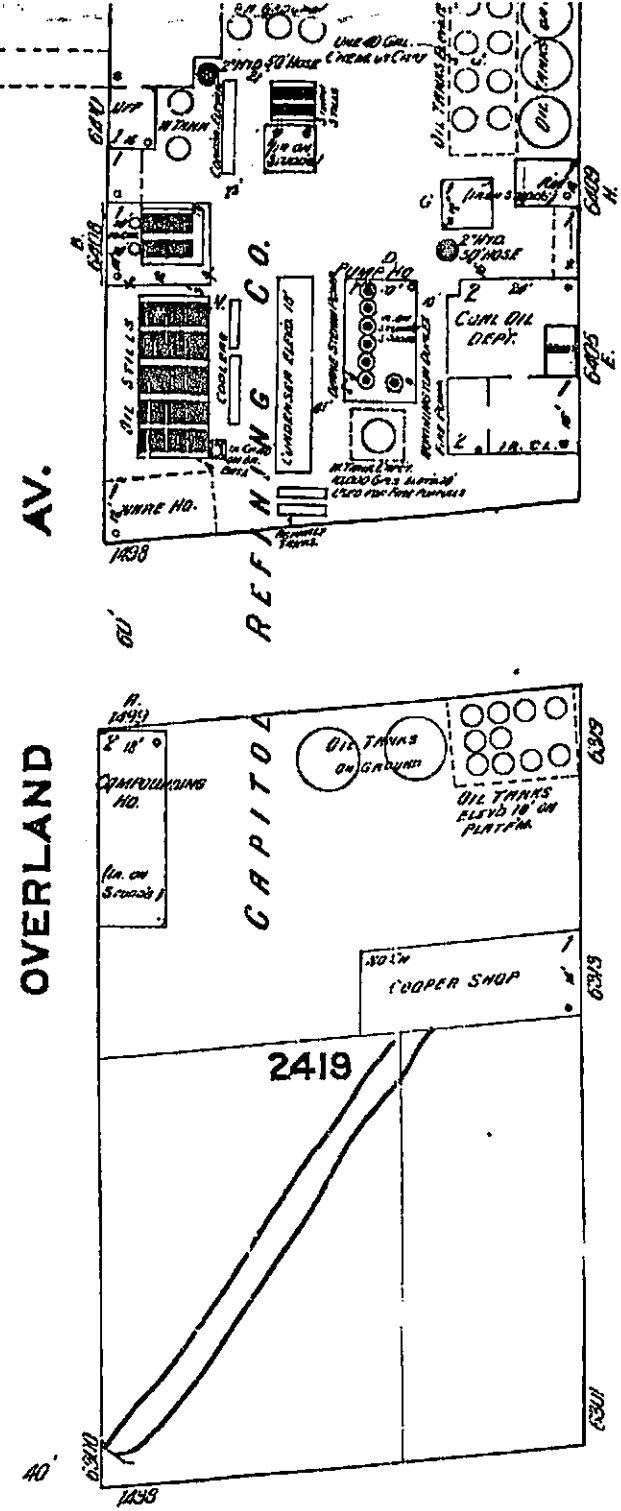
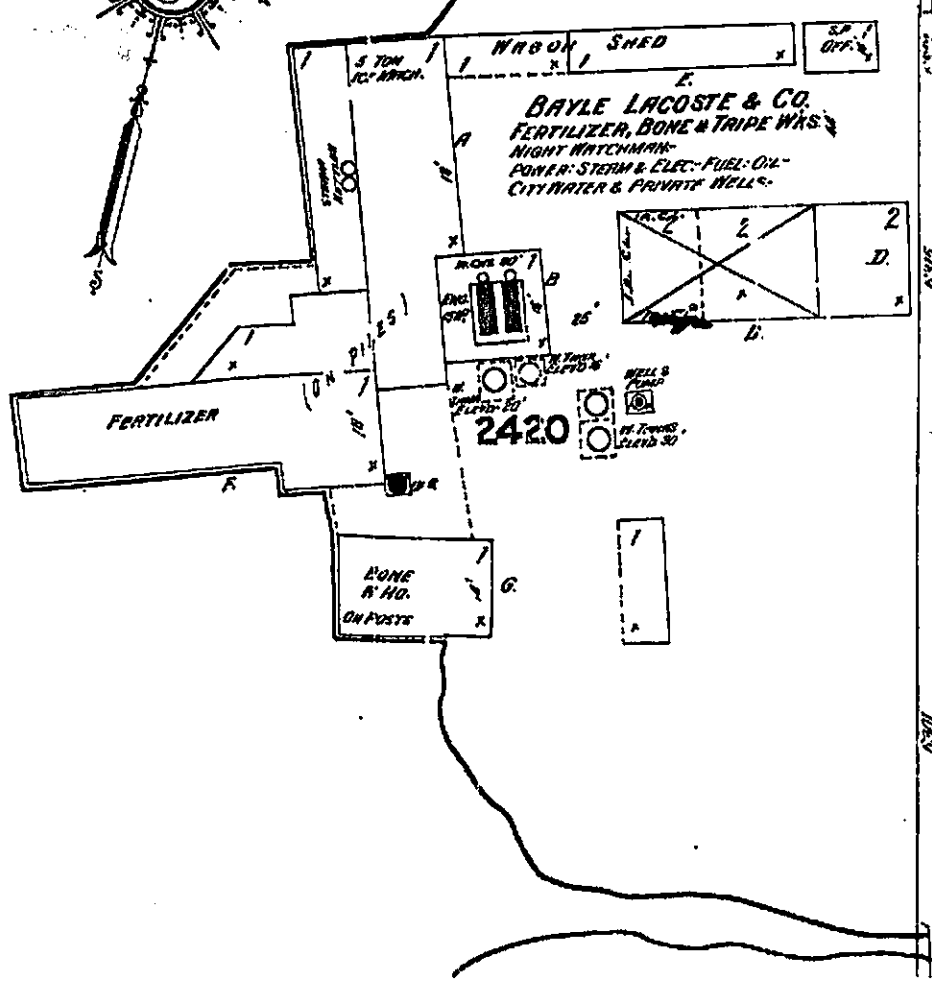
B a y o f

CAPITOL REFINING CO. BLK 2422

3 MEN ON DUTY AT NIGHT INCLUDING NIGHT
WATCHMAN - CLOCK, 8 STATIONS
12 HOURLY ROUNDS -
POWER: STEAM & ELEC. FUEL: OIL -
WIDS & HOSE AS SHOWN -
WATER FROM CITY & 2 BORED WELLS -
NORTHINGTON FIRE PUMP & DEANE PUMP
(CAPAC. OF PUMPS UNKNOWN) DRAW FROM
WELL & FILL 10000 GAL. TANK



2421



See Map of Oakland

Volume 7111

The Sanborn Library, LLC

This Sanborn Map is a certified copy produced by Environmental Data Resources, Inc. under arrangement with The Sanborn Library, LLC. Information on this Sanborn Map is derived from Sanborn field surveys conducted in:

Copyright © 1911 The Sanborn Library, LLC

Best Available Copy

Environmental Data Resources, Inc. is a registered provider of the Environmental Data Resources, Inc. logo.