



6620 Owens Drive, Suite A
Pleasanton, California 94588
TEL (925) 734-4400 FAX (925) 734-6401

FAX

Date: Jan. 3, 2006

FAX: 510-337-9335

TO: Jerry Wickhau

COMPANY: _____

FROM: SOMA Environmental

SUBJECT: 5565 Tesla Road, Livermore

NUMBER OF PAGES INCLUDING COVER: _____

Urgent

Please Review

Please Comment

Please Reply

2 maps.

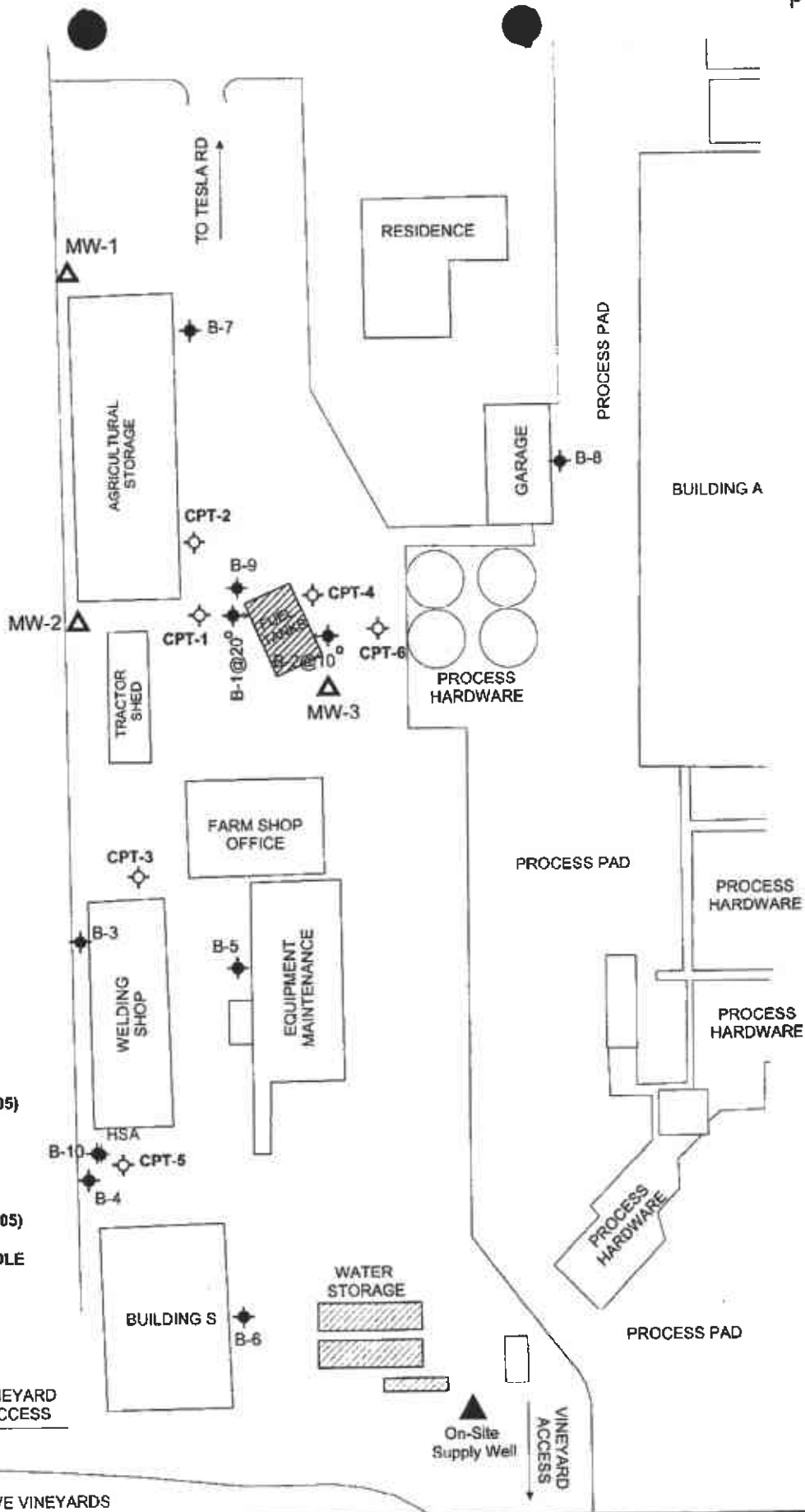


Off-Site Supply Well (Steven Kent Winery)

ACTIVE VINEYARDS

ACTIVE VINEYARDS

ACTIVE VINEYARDS



- ▲ MONITORING WELL (May 2005)
- ▲ PRIVATE WATER WELL
- ◆ TEMPORARY WELL BOREHOLE (June 24, 2005)
- ◇ CPT BOREHOLE (October 2005)
- ◆ HSA CALIBRATION BOREHOLE
- ◆ SOIL BORING (April 2003 By Clayton)
- ◆ ANGLD SOIL BORING (April 2003 By Clayton)

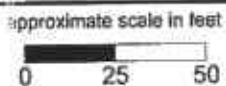


Figure 2: Map showing locations of newly installed wells, temporary well boreholes, and previous soil borings installed by Clayton group.

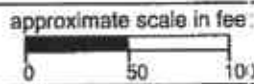
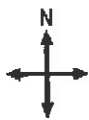
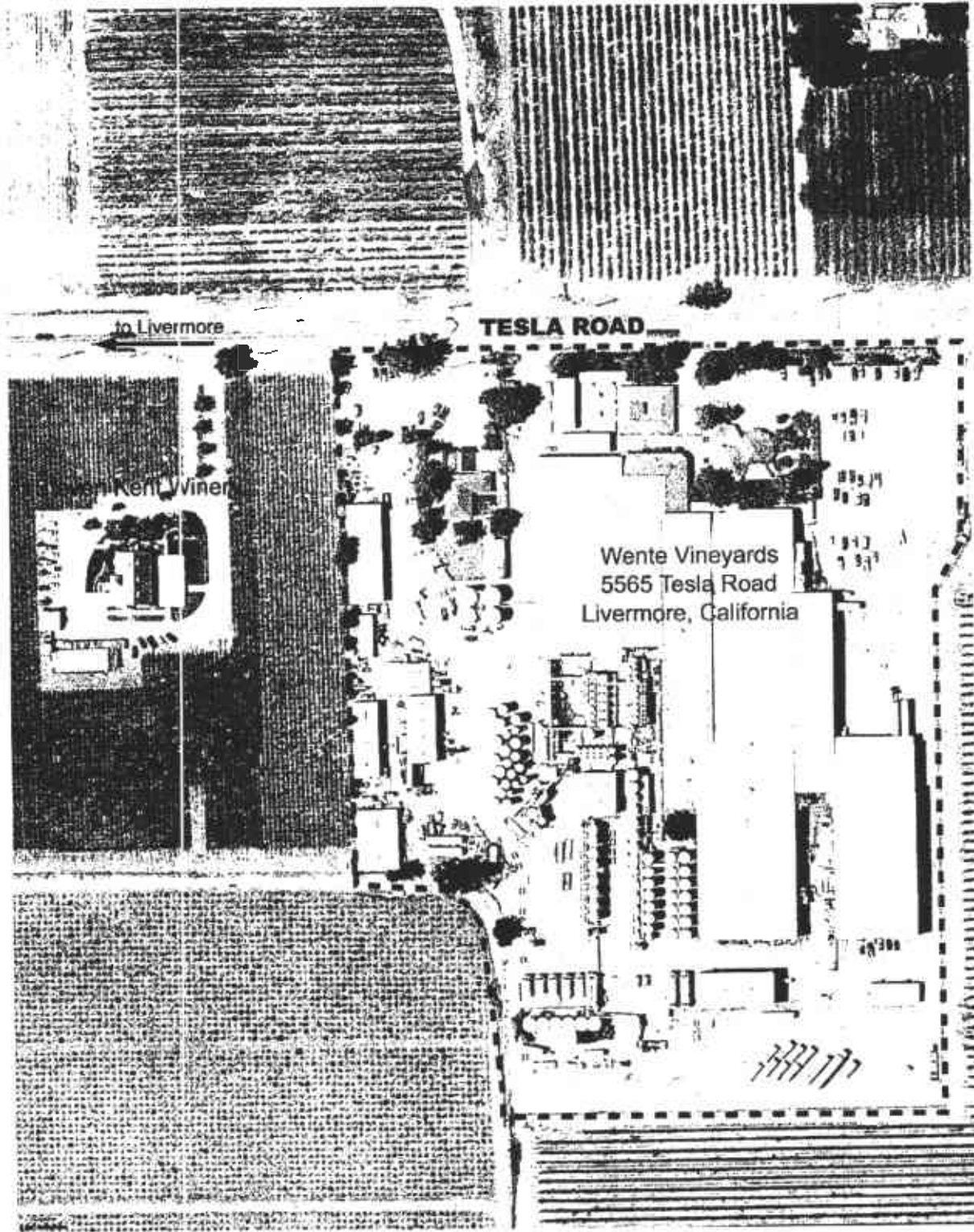


Figure 1: Site vicinity map.