



January 14, 2016
624-0908-0043

Ms. Karel Detterman
Local Oversight Program
Alameda County Environmental Health Services
1131 Harbor Bay Parkway, Suite 250
Alameda, California 94502-6577
(510) 567-6577

Subject: Notice of Intent for Well Destruction

Reference: Bimbo Bakeries USA, Inc.
(formerly Earthgrains Baking Companies, LLC.)
955 Kennedy Street
Oakland, California 94606

ACEH Case Number: RO-0002569
GeoTracker Global ID: T0600177342
Fund Claim Number: 4424

Dear Ms. Detterman:

INTRODUCTION

On behalf of Bimbo Bakeries USA, Inc. (BBU), formerly Earthgrains Baking Companies LLC, PSC Industrial Outsourcing, LP (PSC) is submitting (via upload to GeoTracker) this *Notice of Intent for Well Destruction* (Notice) for the above referenced facility. The property and improvements are owned by BBU. A Site Location Map is presented on Figure 1. This Notice was prepared as a courtesy to inform you of the well destruction activities to take place. The well destruction activities are in accordance with the November 16, 2015 State Water Resources Control Board (SWRCB) Order WQ 2015-0161-UST (Appendix A). The Order was posted to GeoTracker on December 2, 2015.

The well destruction activities will be in general accordance with the permitting agency requirements, Alameda County Public Works Agency (ACPWA), and the California Department of Water Resources (DWR) Well Standards. This Notice discusses the pre-field, in-field, and post-field activities to properly destroy four groundwater monitoring wells located on site. A Monitoring Well Location Map is presented on Figure 2. A Well Construction Data summary table and Groundwater Elevation Data summary table is presented in Table 1 and Table 2, respectively. The original well installation Well Completion Reports are presented in Appendix B.

The pre-field activities include coordination and scheduling the field activities with BBU, obtaining well destruction permits from the ACPWA. The ACPWA permit applications will be completed and submitted for approval at a minimum of 10 days prior to field activities. The pre-

field activities also include the coordination with Underground Service Alert (USA), coordination with third party utility locators, and coordination with drilling and surface restoration subcontractors. The in-field activities have been scheduled for January 27 and 28, 2016. The in-field activities include the destruction of four wells in accordance with the DWR Well Standards and with the permitting requirements of the ACPWA. The in-field activities also includes the disposal of investigative derived waste (IDW) generated during the well destruction activities, and the property surface restoration activities. The post-field activities include completing the DWR Well Completion Reports and a Well Destruction Notice will be uploaded to GeoTracker.

SCHEDULE OF PLANNED SITE ACTIVITIES

The well destruction field activities are scheduled to occur on January 27-28, 2016. PSC has begun preparing the permits required to perform the field activities and schedule subcontractors. Once the permits have been approved, PSC will begin coordinating with the property owner and the various subcontractors to finalize the field activities.

Please call or email any questions concerning this Notice.

Respectfully,
PSC Industrial Outsourcing, LP

Paul Anderson

1/14/2016

Paul Anderson
Project Manager

Date

S:\Shared\UST\Bimbo Bakeries USA\Projects\California\Oakland (955 Kennaly Street)\2015_12 - Well Destruction Work Plan\2016 - Notice of Intent for Well Destruction.docx

c.c. Kacey Fung – Bimbo Bakeries USA, Inc., 8550 W. Bryn Mawr Ave., Suite 1000, Chicago, IL 60631
Christopher Wolfe – Bimbo Bakeries USA, Inc. 350 Kiwanis Blvd., West Hazleton, PA 18202
Pat Cullen – State Water Resources Control Board, UST Clean Up Fund (via GeoTracker)
GeoTracker

ATTACHMENTS:

FIGURE 1: SITE LOCATION MAP
FIGURE 2: MONITORING WELL LOCATION MAP
TABLE 1: MONITORING WELL CONSTRUCTION DATA
TABLE 2: GROUNDWATER ELEVATION DATA
APPENDIX A: SWRCB ORDER (WQ 2015-0161 – UST)

FIGURES

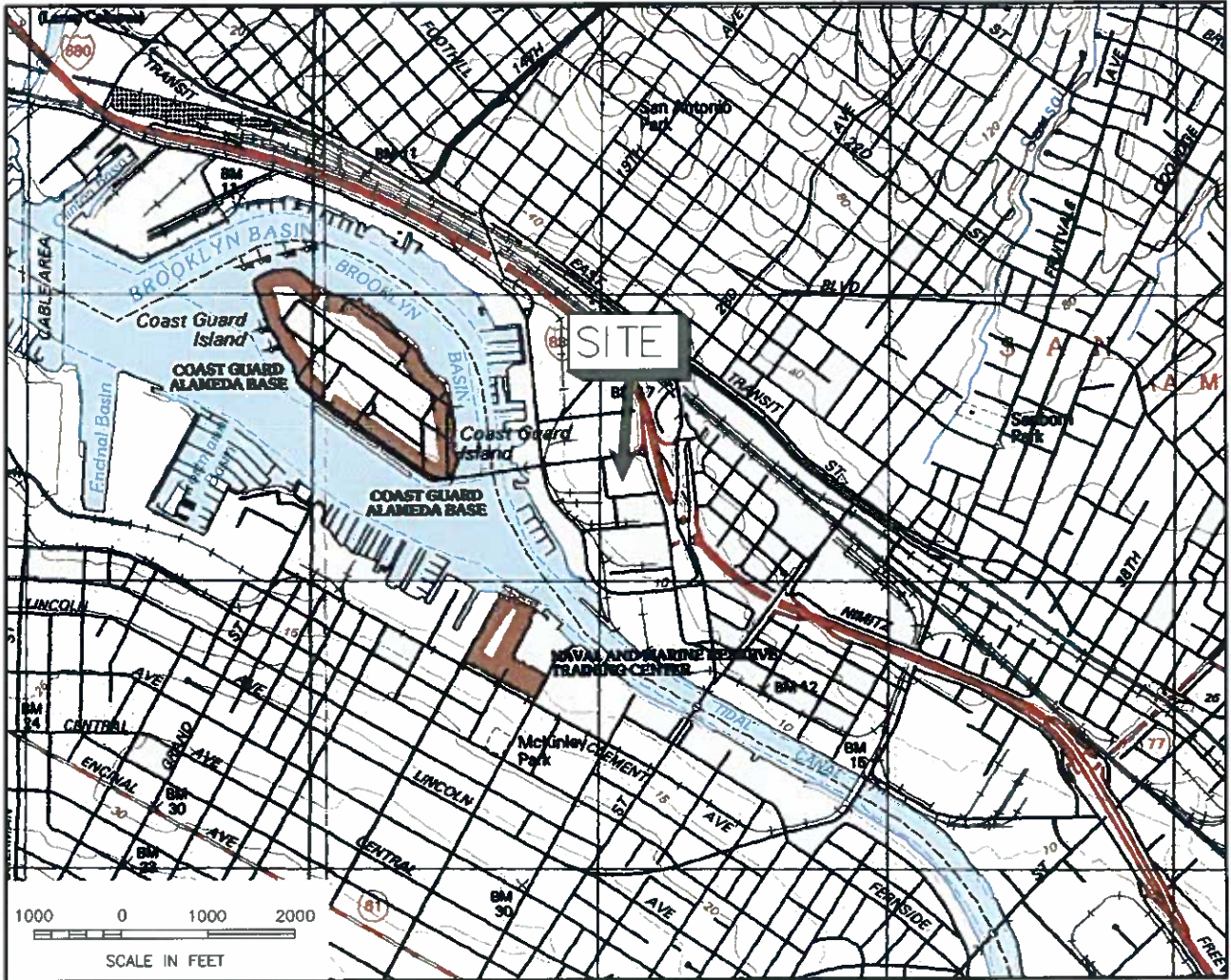
CALIFORNIA



ALAMEDA COUNTY



AREA IN DETAIL



Modified from U.S. Geological Survey, Oakland East & West, California, quadrangle, Photorevised 1997 & 1993.

SCALE IS VARIABLE



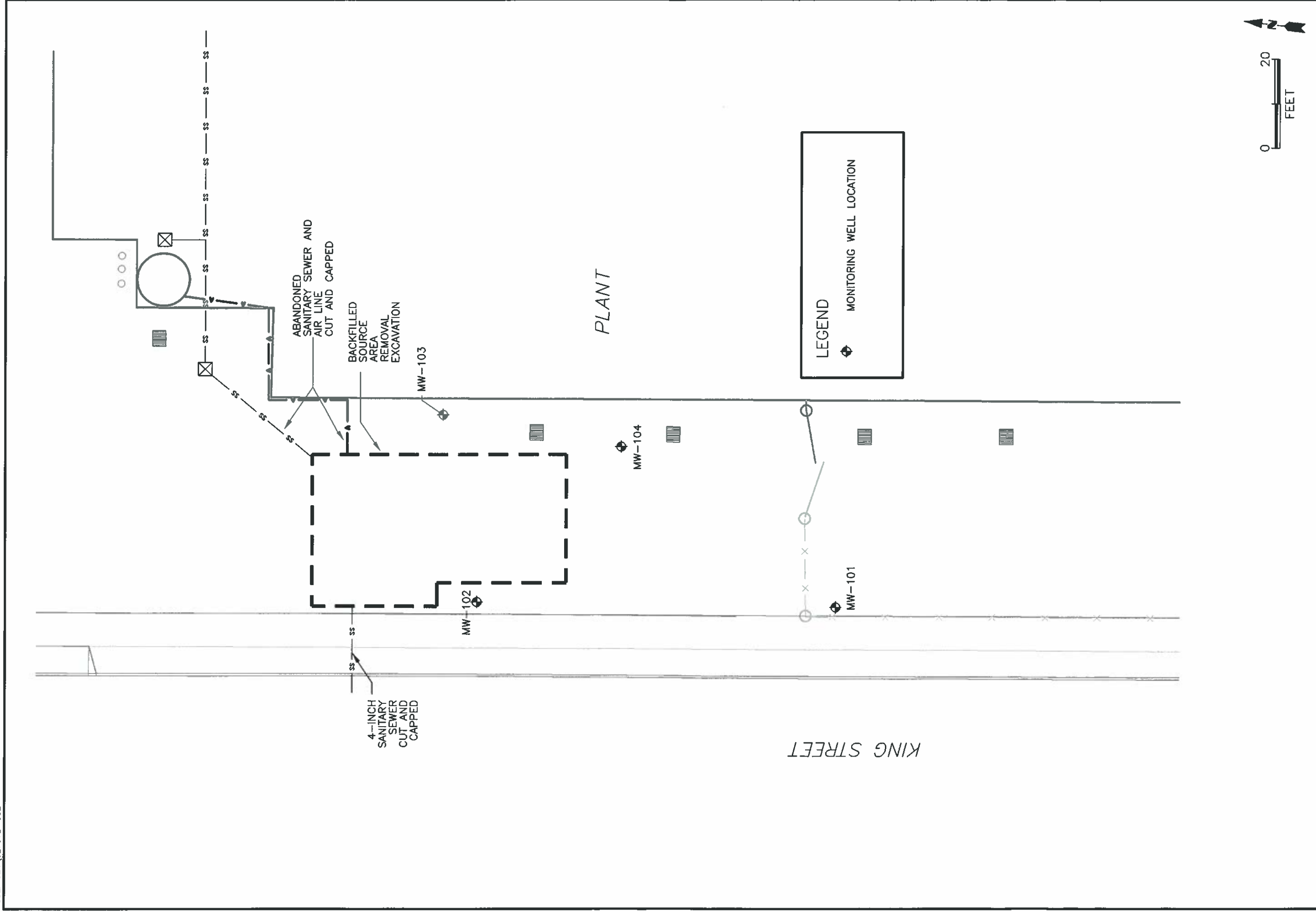
COL 624\02797C-002



TITLE:
 SITE LOCATION MAP
 955 KENNEDY STREET
 OAKLAND, CALIFORNIA 94606

DWN: TMM
 DES.: JRC
 CHKD: APPD:
 DATE: 11/18/08
 REV.: 0

PROJECT NO.: 62402797
 EARTHGRAINS
 OAKLAND, CALIFORNIA
 FIGURE 1



TITLE:
 MONITORING WELL LOCATION MAP
 POST SOURCE REMOVAL

DESIGNER:	JRC	PROJECT NO.:	624-02797
CHIEF:		EARTHGRAINS	
DATE:	8/25/11	OAKLAND, CALIFORNIA	
REV.:	0	FIGURE 2	

TABLES

**Table 1
Well Construction Data**

**Earthgrains Baking Companies, Inc.
955 Kennedy Street
Oakland, California 94606**

Well ID	Well Installation Date	TOC Elevation ¹ (feet MSL)	Casing Material	Boring Depth (feet bgs)	Total Well Depth (feet bgs)	Total Well Depth (feet MSL)	Boring Diameter (inches)	Casing Diameter (inches)	Slot Size (inches)	Screened Interval (feet bgs)	Filter Pack Interval (feet bgs)	Filter Pack Sand
MW-101	1/19/2009	13.90	PVC	28.10	28.05	-14.15	8	2	0.010	18-28	16-28	#2/12
MW-102	1/20/2009	14.19	PVC	28.40	28.35	-14.16	8	2	0.010	18-28	16-28	#2/12
MW-103	1/19/2009	13.75	PVC	25.00	24.92	-11.17	8	2	0.010	10-25	8-25	#2/12
MW-104	1/20/2009	13.65	PVC	25.15	25.10	-11.45	8	2	0.010	10-25	8-25	#2/12

Notes:

TOC = top of well casing

¹ = well casing elevations surveyed according to NAVD88 datum by PLS Surveys, Inc. on January 28, 2009.

MSL = mean sea level

bgs = below-ground-surface

PVC = polyvinyl chloride (Schedule 40)

**Table 2
Groundwater Elevation Data**

**Earthgrains Baking Companies, Inc.
955 Kennedy Street
Oakland, California 94606**

Well ID	Measurement Date	Well TOC Elevation (feet MSL)[†]	Depth to Water From TOC (feet bgs)	Groundwater Elevation (feet MSL)	Total Well Depth (feet bgs)	Total Well Depth (feet MSL)
MW-101	1/26/2009	13.90	8.92	4.98	28.05	-14.15
	4/15/2009	13.90	9.43	4.47	27.85	-13.95
	7/22/2009	13.90	9.62	4.28	27.81	-13.91
	1/28/2010	13.90	7.68	6.22	27.80	-13.90
	8/24/2010	13.90	9.50	4.40	27.70	-13.80
	12/10/2010	13.90	7.68	6.22	27.91	-14.01
	2/02/2011	13.90	8.56	5.34	27.90	-14.00
	7/26/2011	13.90	9.12	4.78	27.85	-13.95
	1/06/2012	13.90	9.10	4.80	27.87	-13.97
	7/17/2012	13.90	9.50	4.40	27.83	-13.93
	3/26/2013	13.90	9.45	4.45	27.85	-13.95
MW-102	1/26/2009	14.19	9.15	5.04	28.35	-14.16
	4/15/2009	14.19	9.55	4.64	28.21	-14.02
	7/22/2009	14.19	10.02	4.17	28.19	-14.00
	1/28/2010	14.19	9.70	4.49	28.15	-13.96
	8/24/2010	14.19	9.75	4.44	28.15	-13.96
	12/10/2010	14.19	8.16	6.03	28.27	-14.08
	2/02/2011	14.19	9.37	4.82	28.28	-14.09
	7/26/2011	14.19	9.55	4.64	28.14	-13.95
	1/06/2012	14.19	11.31	2.88	28.22	-14.03
	7/17/2012	14.19	10.47	3.72	28.15	-13.96
	3/26/2013	14.19	11.68	2.51	28.13	-13.94
MW-103	1/26/2009	13.75	8.69	5.06	24.92	-11.17
	4/15/2009	13.75	8.91	4.84	24.74	-10.99
	7/22/2009	13.75	9.18	4.57	24.68	-10.93
	1/28/2010	13.75	7.75	6.00	24.65	-10.90
	8/24/2010	13.75	9.03	4.72	24.20	-10.45
	12/10/2010	13.75	7.67	6.08	24.80	-11.05
	2/02/2011	13.75	8.51	5.24	24.77	-11.02
	7/26/2011	13.75	8.84	4.91	24.70	-10.95
	1/06/2012	13.75	8.80	4.95	24.69	-10.94
	7/17/2012	13.75	9.10	4.65	24.70	-10.95
	3/26/2013	13.75	9.00	4.75	24.70	-10.95

**Table 2
Groundwater Elevation Data**

**Earthgrains Baking Companies, Inc.
955 Kennedy Street
Oakland, California 94606**

Well ID	Measurement Date	Well TOC Elevation (feet MSL)¹	Depth to Water From TOC (feet bgs)	Groundwater Elevation (feet MSL)	Total Well Depth (feet bgs)	Total Well Depth (feet MSL)
MW-104	1/26/2009	13.65	8.65	5.00	25.00	-11.35
	4/15/2009	13.65	8.87	4.78	24.90	-11.25
	7/22/2009	13.65	9.27	4.38	24.91	-11.26
	1/28/2010	13.65	8.02	5.63	24.90	-11.25
	8/24/2010	13.65	9.00	4.65	24.69	-11.04
	12/10/2010	13.65	7.60	6.05	24.40	-10.75
	2/02/2011	13.65	8.38	5.27	24.94	-11.29
	7/26/2011	13.65	8.84	4.81	24.86	-11.21
	1/06/2012	13.65	8.72	4.93	24.69	-11.04
	7/17/2012	13.65	9.10	4.55	24.85	-11.20
	3/26/2013	13.65	9.05	4.60	24.85	-11.20
DW-1	1/26/2009	14.05	9.10	4.95	14.60	-0.55
	4/15/2009	14.05	9.23	4.82	14.41	-0.36
	7/22/2009	14.05	9.50	4.55	14.41	-0.36
	1/28/2010	14.05	7.84	6.21	NM	NM
	8/24/2010	14.05	9.00	5.05	14.25	-0.20
	Well permanently destroyed / removed during source area removal activities					

Notes:

TOC = top of well casing

1 = well casing elevations surveyed according to NAVD88 datum by PLS Surveys, Inc. on January 28, 2009.

MSL = mean sea level

bgs = below-ground-surface

NM = not measured

DW-1 = de-watering well

APPENDIX A
SWRCB ORDER
(WQ 2015-0161 – UST)

STATE OF CALIFORNIA
STATE WATER RESOURCES CONTROL BOARD

ORDER WQ 2015-0161 – UST

In the Matter of Underground Storage Tank Case Closure

**Pursuant to Health and Safety Code Section 25296.10 and the Low Threat
Underground Storage Tank Case Closure Policy**

BY THE CHIEF DEPUTY DIRECTOR:¹

By this order, the Chief Deputy Director directs closure of the underground storage tank (UST) case at the site listed below, pursuant to section 25296.10 of the Health and Safety Code². The name of the UST Cleanup Fund (Fund) claimant, the Fund claim number, the site name, the applicable site address, and the lead agency are as follows:

**Bimbo Bakeries, USA, Inc., Assignee
Fund Claim No. 4424
Earthgrains Baking Company
955 Kennedy Street, Oakland**

**Alameda County Environmental Health Department
Agency Case Number RO0002569**

I. STATUTORY AND PROCEDURAL BACKGROUND

Upon review of a UST case, the State Water Resources Control Board (State Water Board), or in certain cases the State Water Board Executive Director, or Chief Deputy Director, may close or require closure of a UST case if the State Water Board determines that corrective action at the site is in compliance with the requirements of subdivisions (a) and (b) of section 25296.10. Closure of a UST case is appropriate where the corrective action ensures the protection of human health, safety, and the environment, and where the corrective action is consistent with: 1) Chapter 6.7 of Division 20 of the Health and Safety Code and implementing regulations; 2) Any applicable waste discharge requirements or other orders issued pursuant to

¹ State Water Board Resolution No. 2012-0061 delegates to the Executive Director the authority to close or require the closure of any UST case if the case meets the criteria found in the State Water Board's Low Threat Underground Storage Tank Case Closure Policy adopted by State Water Board Resolution No. 2012-0016. Pursuant to Resolution No. 2012-0061, the Executive Director has delegated this authority to the Chief Deputy Director.

² Unless otherwise noted, all references are to the Health and Safety Code.

Division 7 of the Water Code; 3) All applicable state policies for water quality control; and 4) All applicable water quality control plans.

State Water Board staff has completed a review of the UST case identified above, and recommends that this case be closed. The recommendation is based upon the facts and circumstances of this particular UST case. A UST Case Closure Review Summary Report has been prepared for the case identified above and the bases for determining compliance with the Water Quality Control Policy for Low-Threat Underground Storage Tank Case Closures (Policy) are explained in the Case Closure Review Summary Report.

In State Water Board Resolution No. 2012-0016, the State Water Board adopted the Policy. The Policy became effective on August 17, 2012. The Policy establishes consistent statewide case closure criteria for certain low-threat petroleum UST sites. In the absence of unique attributes or site-specific conditions that demonstrably increase the risk associated with residual petroleum constituents, cases that meet the general and media-specific criteria in the Policy pose a low threat to human health, safety and the environment and are appropriate for closure under Health and Safety Code section 25296.10. The Policy provides that if a regulatory agency determines that a case meets the general and media-specific criteria of the Policy, then the regulatory agency shall notify responsible parties and other specified interested persons that the case is eligible for case closure. Unless the regulatory agency revises its determination based on comments received on the proposed case closure, the Policy provides that the agency shall issue a closure letter as specified in Health and Safety Code section 25296.10. The uniform closure letter may be issued only after the expiration of the 60-day comment period, proper destruction or maintenance of monitoring wells or borings, and removal of waste associated with investigation and remediation of the site.

Health and Safety Code section 25299.57, subdivision (1)(1) provides that claims for reimbursement of corrective action costs that are received by the Fund more than 365 days after the date of a uniform closure letter or a Letter of Commitment, whichever occurs later, shall not be reimbursed unless specified conditions are satisfied.

II. FINDINGS

Based upon the UST Case Closure Review Summary Report prepared for the case and attached hereto, the State Water Board finds that corrective action taken to address the unauthorized release of petroleum at the UST release site identified as:

Claim No. 4424

Earthgrains Baking Company

ensures protection of human health, safety and the environment and is consistent with Chapter 6.7 of Division 20 of the Health and Safety Code and implementing regulations, the Policy, and other applicable water quality control policies and plans.

The unauthorized release from the UST consisted only of petroleum. This order directs closure for the petroleum UST case at the site.³

Pursuant to the Policy, notification has been provided to all entities that are required to receive notice of the proposed case closure, a 60-day comment period has been provided to notified parties, and any comments received have been considered by the Board in determining that the case should be closed.

Pursuant to section 21080.5 of the Public Resources Code, environmental impacts associated with the adoption of this Order were analyzed in the substitute environmental document (SED) the State Water Board approved on May 1, 2012. The SED concludes that all environmental effects of adopting and implementing the Policy are less than significant, and environmental impacts as a result of complying with the Policy are no different from the impacts that are reasonably foreseen as a result of the Policy itself. A Notice of Decision was filed August 17, 2012. No new environmental impacts or any additional reasonably foreseeable impacts beyond those that were not addressed in the SED will result from adopting this Order.

The UST case identified above may be the subject of orders issued by the Regional Water Quality Control Board (Regional Water Board) pursuant to Division 7 of the Water Code. Any orders that have been issued by the Regional Water Board pursuant to Division 7 of the Water Code, or directives issued by a Local Oversight Program agency for this case should be rescinded to the extent they are inconsistent with this Order.

³ This order addresses only the petroleum UST case for the site. This order does not affect any order or directive requiring corrective action for non-petroleum contamination, if non-petroleum contamination is present.

III. ORDER

IT IS THEREFORE ORDERED that:

- A. The UST case identified in Section II of this Order, meeting the general and media-specific criteria established in the Policy, be closed in accordance with the following conditions and after the following actions are complete. Prior to the issuance of a uniform closure letter, the Fund claimant is ordered to:
1. Properly destroy monitoring wells and borings unless the owner of real property on which the well or boring is located certifies that the wells or borings will be maintained in accordance with local or state requirements;
 2. Properly remove from the site and manage all waste piles, drums, debris, and other investigation and remediation derived materials in accordance with local or state requirements; and
 3. Within six months of the date of this Order, submit documentation to the regulatory agency overseeing the UST case identified on page 1 of this Order that the tasks in subparagraphs (1) and (2) have been completed.
- B. The tasks in subparagraphs (1) and (2) of paragraph (A) are ordered pursuant to Health and Safety Code section 25296.10 and failure to comply with these requirements may result in the imposition of civil penalties pursuant to Health and Safety Code section 25299, subdivision (d)(1). Penalties may be imposed administratively by the State Water Board or Regional Water Board.
- C. Within 30 days of receipt of proper documentation from the Fund claimant that requirements in subparagraphs (1) and (2) of paragraph (A) are complete, the regulatory agency that is responsible for oversight of the UST case identified in Section II of this Order shall notify the State Water Board that the tasks have been satisfactorily completed.

- D. Within 30 days of notification from the regulatory agency that the tasks are complete pursuant to paragraph (C), the Deputy Director of the Division of Financial Assistance shall issue a closure letter consistent with Health and Safety Code section 25296.10, subdivision (g) and upload the closure letter and UST Case Closure Review Summary Report to GeoTracker.
- E. Pursuant to section 25299.57, subdivision (l) (1), and except in specified circumstances, all claims for reimbursement of corrective action costs must be received by the Fund within 365 days of issuance of the uniform closure letter in order for the costs to be considered.
- F. Any Regional Water Board or Local Oversight Program Agency directive or order that directs corrective action or other action inconsistent with case closure for the UST case identified in Section II is rescinded, but only to the extent the Regional Water Board order or Local Oversight Program Agency directive is inconsistent with this Order.



Chief Deputy Director



Date



EDMUND G. BROWN JR.
GOVERNOR



MATTHEW RODRIGUEZ
SECRETARY FOR
ENVIRONMENTAL PROTECTION

State Water Resources Control Board

REVISED UST CASE CLOSURE REVIEW SUMMARY REPORT

Agency Information

Agency Name: Alameda County Environmental Health Department (County)	Address: 1131 Harbor Bay Parkway Alameda, CA 94502
Agency Caseworker: Karel Detterman	Case No.: RO0002569

Case Information

USTCF Claim No.: 4424	GeoTracker Global ID: T0600177342
Site Name: Earthgrains Baking Company	Site Address: 955 Kennedy Street Oakland, CA 94606
Responsible Party: Earthgrains Baking Co. Attn: Ms. Angela Westbrook	Address: 955 Kennedy Street Oakland, CA 94606
USTCF Expenditures to Date: \$996,250	Number of Years Case Open: 12

To view all public documents for this case available in GeoTracker use the following URL:
http://geotracker.waterboards.ca.gov/profile_report.asp?global_id=T0600177342

Summary

The Low-Threat Underground Storage Tank (UST) Case Closure Policy (Policy) contains general and media-specific criteria, and cases that meet those criteria are appropriate for closure pursuant to the Policy. This case meets all of the required criteria of the Policy. Highlights of the case follow:

This case is an active petroleum fueling facility for a commercial bakery. An unauthorized release was reported in April 2003 following a soil and groundwater investigation. In 1991, eight USTs (six diesel, one gasoline and one waste oil) were removed. Two excavations have been completed where an unknown amount of soil was removed in 1991 and a second event where 775 cubic yards impacted soil and 13,000 gallons of impacted groundwater were removed and disposed offsite in 2010. Since 1992, nine groundwater monitoring wells have been installed and regularly monitored; five wells have been abandoned. According to groundwater data, water quality objectives have been achieved for all constituents.

The petroleum release is limited to the soil and shallow groundwater. According to data available in GeoTracker, there are no supply wells within 250 feet of the defined plume boundary. No other water supply wells have been identified within 250 feet of the defined plume boundary in files reviewed. The site is located within the service area of a public water supply, as defined in the Policy. The affected shallow groundwater is not currently being used as a source of drinking water, and it is highly unlikely that the affected shallow groundwater will be used as a source of drinking water in the foreseeable future. Other designated beneficial uses of impacted shallow groundwater are not threatened, and it is highly unlikely that they will be, considering these factors in the context of the site setting. Remaining petroleum hydrocarbon constituents are limited and stable, and concentrations are decreasing. Corrective actions have been implemented and additional corrective actions are not necessary. Any remaining petroleum hydrocarbon constituents do not pose a significant risk to human health, safety or the environment.

FELICIA MARCIUS, CHAIR | THOMAS HOWARD, EXECUTIVE DIRECTOR

1001 I Street, Sacramento, CA 95814 | Mailing Address: P.O. Box 100, Sacramento, Ca 95812-0100 | www.waterboards.ca.gov



Earthgrains Baking Company
955 Kennedy Street, Oakland
Claim No: 4424

Rationale for Closure under the Policy

- General Criteria: The case meets all eight Policy general criteria.
- Groundwater Risk from Residual Petroleum Hydrocarbons: The case meets Policy Criterion 1 by Class 1. The plume that exceeds water quality objectives is less than 100 feet in length. There is no free product. The nearest water supply well or surface water body is greater than 250 feet from the defined plume boundary.
- Indoor Vapor Risk from Residual Petroleum Hydrocarbons: The case meets Policy Criterion 2a by Scenario 3a. The maximum benzene concentration in groundwater is less than 100 micrograms per liter ($\mu\text{g/L}$). The minimum depth to groundwater is greater than 5 feet, overlain by soil containing less than 100 milligrams per kilogram (mg/kg) of TPH.
- Direct Contact Risk from Residual Petroleum Hydrocarbons: The case meets Policy Criterion 3a. Maximum concentrations in soil are less than those in Policy Table 1 for Commercial/Industrial use, and the concentration limits for a Utility Worker are not exceeded.

Determination

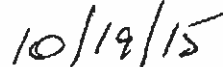
The Fund Manager has determined that corrective action performed at the Site is consistent with the requirements of Health and Safety code section 25296.10, subdivision (a), and that closure of the case is appropriate.

Recommendation for Closure

Based on available information, residual petroleum hydrocarbons at the Site do not pose a significant risk to human health, safety, or the environment, and the case meets the requirements of the Policy. Accordingly, the Fund Manager recommends that the case be closed. The State Water Board staff is conducting public notification as required by the Policy. Alameda County has the regulatory responsibility to supervise the abandonment of monitoring wells.



Lisa Babcock, P.G. 3939, C.E.G. 1235
Fund Manager



Date

Prepared by: Pat G. Cullen, P.G.

APPENDIX B
ORIGINAL WELL COMPLETION REPORTS
(JANUARY 2009)

CONFIDENTIAL

STATE OF CALIFORNIA DWR
WELL COMPLETION REPORT
(WELL LOGS)

REMOVED



BORINGWELL CONSTRUCTION LOG

Project:	Earthgrains UST Clean-up	Boring No.:	MW-101	Page(s):	1 of 2
Client:	Earthgrains Baking Companies, Inc.	Project #:	62402797 / 024530	Date:	1/19/2009
Location:	Oakland, CA	Coordinates:	LAT 37.7786814 LON -122.2400025	Datum:	NAD 83

Drilling Company:	Gregg Drilling & Testing, Inc.	Driller:	Jason Weff	Logger:	Brendon J. Wilder
-------------------	--------------------------------	----------	------------	---------	-------------------

Depth (ft)	SAMPLE TYPE	SAMPLE NUMBER	Blow Counts				USCS	PID (ppm)	WELL CONSTRUCTION SUMMARY					Surface Completion
			1ST 6"	2ND 6"	3RD 6"	4TH 6"			Depth (ft)	Casing	Depth (ft)	Annulus	Surface	
									0 to 18	2" PVC Sch. 40	14 to 16	3/8" Bentonite Chips		
								18 to 28	2" PVC 0.01" Sch. 40	16 to 28	#2/12 Sand			
Description													Surface Vault	
Modifier and Main Soil; color; impact; consistency/density; odor; moisture; USCS														
1														
2														
3														
4														
5														
6	S.S.		3	4	5	CL	0							
7														
8														
9	S.S.		4	6	6	CL	0							
10														
11														
12														
13														
14	S.S.		5	5	6	CL	0							
15														
16														
17														
18	S.S.		4	4	5	CL	0							
19														
20														

Notes: Brass sample tubes = 6" in length
 Sand #2/12 Monterrey 50# bags:5.5 Type II-IV cement 94# bags:
 Bentonite chips 3/8" 50lbs bag



Project: Earthgrains UST Clean-up **Boring No.:** MW-101 **Page(s):** 2 of 2
Client: Earthgrains Baking Companies, Inc. **Project #:** 62402797 / 024530 **Date:** 1/19/2009
Location: Oakland, CA **Coordinates:** LAT 37.7786814 LON -122.2400025 **Datum:** NAD 83

BORING/WELL CONSTRUCTION LOG

Drilling Company: Gregg Drilling & Testing, Inc. **Driller:** Jason Weff **Logger:** Brendon J. Wilder

WELL CONSTRUCTION SUMMARY

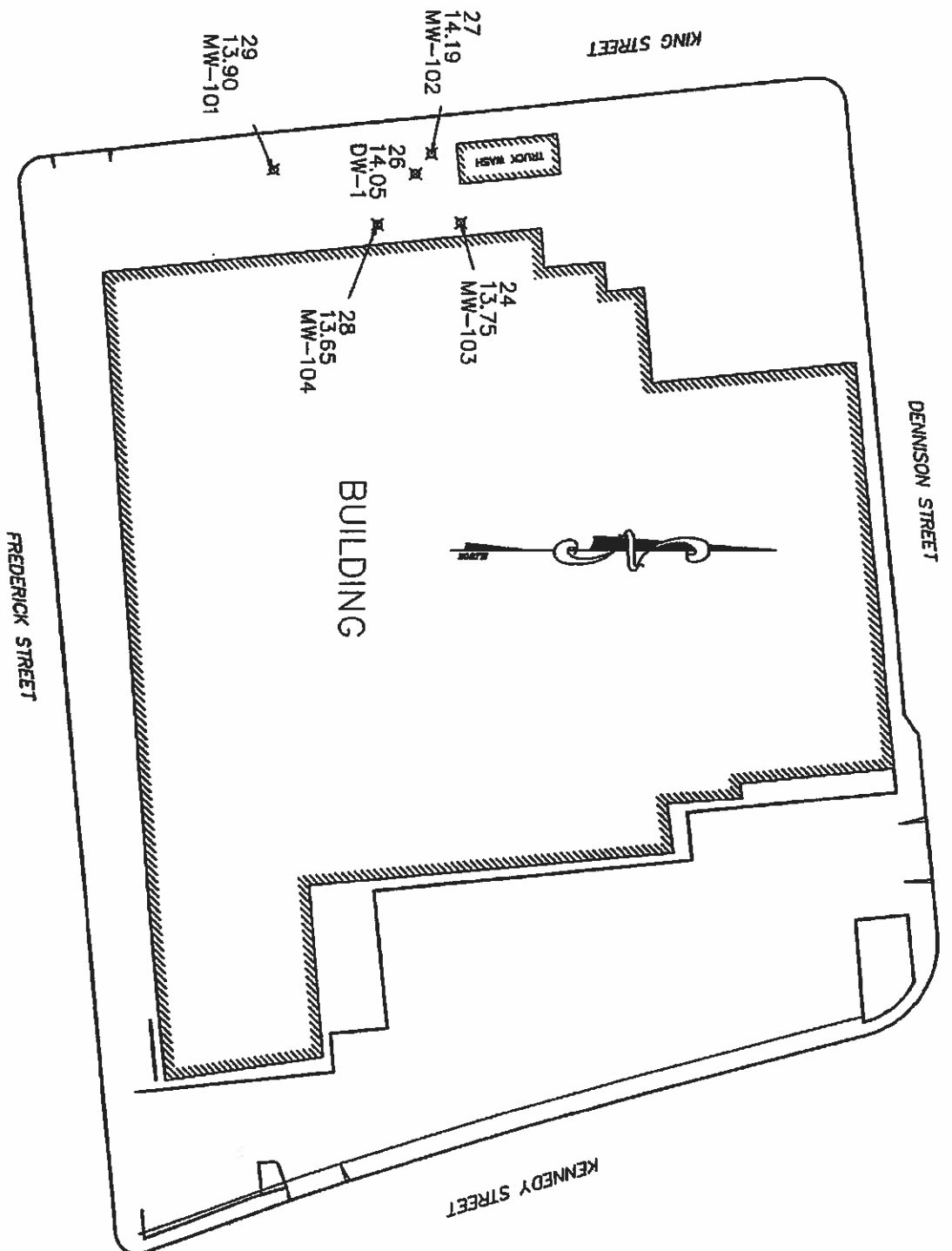
Depth (ft)	Casing	Depth (ft)	Annulus	Surface Completion
0 to 18	2" PVC Sch. 40	0 to 14	Type II-IV Cement	
18 to 28	2" PVC 0.01" Sch. 40	14 to 16	3/8" Bentonite Chips	
		16 to 28	#2/12 Sand	

Description

Modifier and Main Soil; color; impact; consistency/density; odor; moisture; USCS

Depth (ft)	SAMPLE TYPE	SAMPLE NUMBER				Blow Counts	PID (ppm)	Description
		1ST 6"	2ND 6"	3RD 6"	4TH 6"			
21-								
22-								
23-								
24-	S.S.	5	5	5	CL	0	SILTY-CLAY w/ some sand trace gravel damp and firm to stiff sampled @ 10:55	
25-								
26-								
27-	S.S.	4	7	10	CL	0	mottled dark grey sampled @ 11:00	
28-								
29-							NOTES: terminate borehole at 28' bgs @ 11:00 10' PVC screen w/ .010 slot 18' PVC riser	
30-								
31-								
32-								
33-								
34-								
35-								
36-								
37-								
38-								
39-								
40-								

Notes: Brass sample tubes = 6" in length
 Sand #2/12 Monterrey 50# bags:5.5 Type II-IV cement 94# bags:
 Bentonite chips 3/8" 50lbs bag



PLS SURVEYS, INC.
 LAND & HYDROGRAPHIC SURVEYORS
 2220 Livingston Street, Suite 202
 Oakland, California 94606-5203
 510.261.0900 FAX 510.261.3303
 e-mail: pls surv@pacbell.net

Earthgrains Site

955 Kennedy St.

OAKLAND

CALIFORNIA

SCALE 1"=80'

DATE 01/28/09

BY JMB/JTH

JOB NO. 09-001

CONFIDENTIAL

STATE OF CALIFORNIA DWR
WELL COMPLETION REPORT
(WELL LOGS)

REMOVED



Project:	Earthgrains UST Clean-up	Boring No.:	MW-102	Page(s):	1 of 2
Client:	Earthgrains Baking Companies, Inc.	Project #:	62402797 / 024530	Date:	1/20/2009
Location:	Oakland, CA	Coordinates:	LAT 37.7789004 LON -122.2400355	Datum:	NAD 83

BORING/WELL CONSTRUCTION LOG

Drilling Company:	Gregg Drilling & Testing, Inc.	Driller:	Jason Weff	Logger:	Brendon J. Wilder
-------------------	--------------------------------	----------	------------	---------	-------------------

Depth (ft)	SAMPLE TYPE	SAMPLE NUMBER	Blow Counts				USCS	PID (ppm)	WELL CONSTRUCTION SUMMARY				Surface Completion
			1ST 6"	2ND 6"	3RD 6"	4TH 6"			Depth (ft)	Casing	Depth (ft)	Annulus	
									0 to 18	2" PVC Sch. 40	0 to 14	Type II-IV Cement	
								18 to 28	2" PVC 0.01" Sch. 40	14 to 16	3/8" Bentonite Chips		
										16 to 28	#2/12 Sand		
Description											Surface Vault		
Modifier and Main Soil; color; impact; consistency/density; odor; moisture; USCS													
1-													
2-													
3-													
4-													
5-													
6-	S.S.		4	5	7		CL	0	Top 14" concrete				
7-									Air Knifed/ Hand augered to 5' below ground surface				
8-									Drilled borehole using 8" hollow stem augers w/ California Modified Split- Spoon Sampling				
9-	S.S.		3	4	5		CL	0	SILTY-CLAY very dark greyish-brown (2.5 YR 3/2) mottled dark yellowish brown (10 YR 3/4) Soft to medium stiff damp sampled @ 9:30				
10-									5 YR 3/1 with trace coarse-grained angular sand moist and stiff sampled @ 9:35				
11-													
12-													
13-													
14-	S.S.		5	7	7		CL	0	medium stiff w/ less silt% moist to very moist sampled @ 9:40				
15-													
16-													
17-													
18-	S.S.		3	6	6		CL	0	mottled dark grey sampled @ 9:45				
19-													
20-													

Notes: Brass sample tubes = 6" in length
 Sand #2/12 Monterrey 50# bags:5.5 Type II-IV cement 94# bags:
 Bentonite chips 3/8" 50lbs bag



Project: Earthgrains UST Clean-up **Boring No.:** MW-102 **Page(s):** 2 of 2
Client: Earthgrains Baking Companies, Inc. **Project #:** 62402797 / 024530 **Date:** 1/20/2009
Location: Oakland, CA **Coordinates:** LAT 37.7789004 LON -122.2400355 **Datum:** NAD 83

BORING/WELL CONSTRUCTION LOG

Drilling Company:
 Gregg Drilling & Testing, Inc.

Driller: Jason Weff

Logger: Brendon J. Wilder

WELL CONSTRUCTION SUMMARY

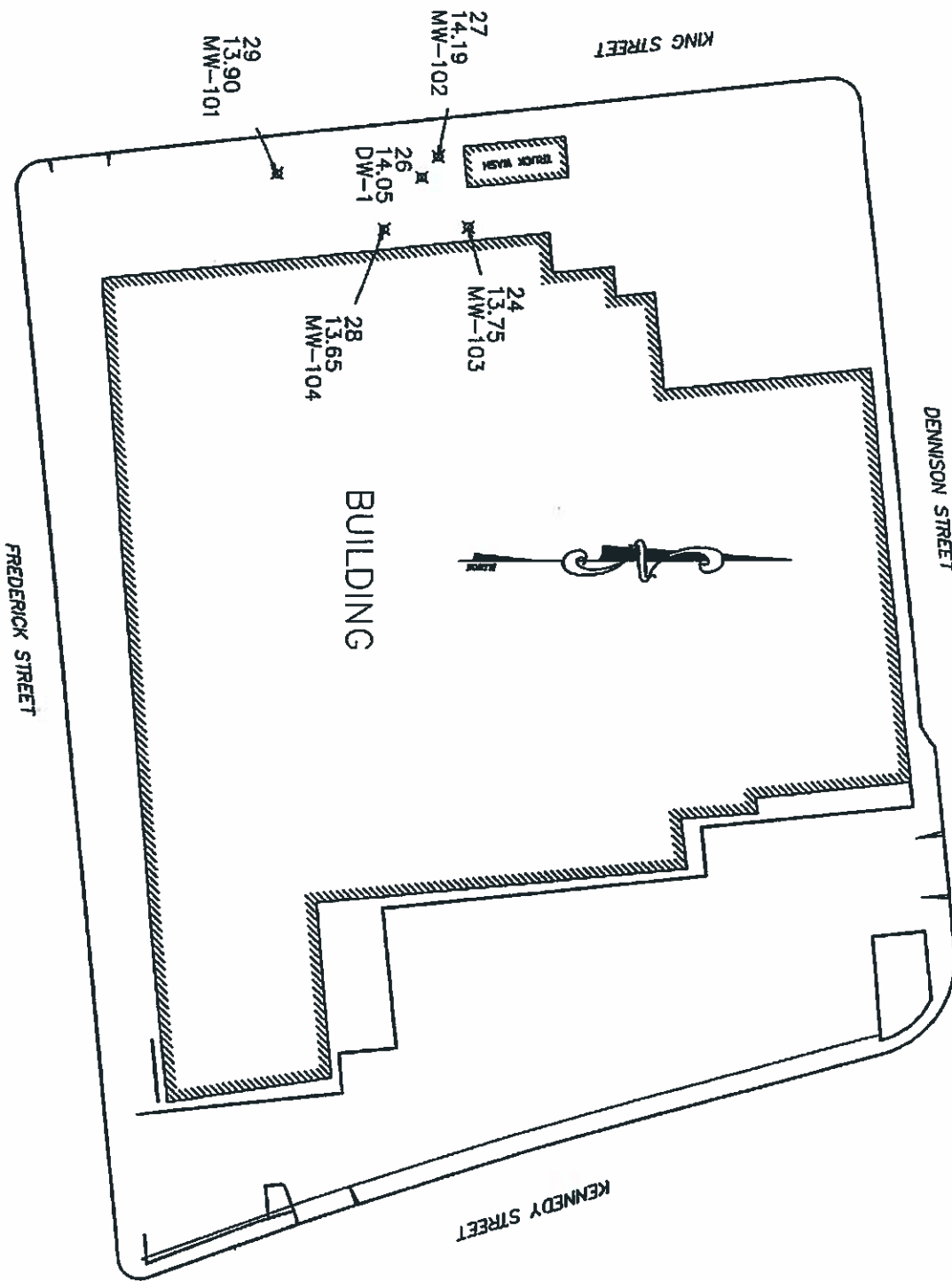
Depth (ft)	Casing	Depth (ft)	Annulus	Surface Completion
0 to 18	2" PVC Sch. 40	0 to 14	Type II-IV Cement	
18 to 28	2" PVC 0.01" Sch. 40	14 to 16	3/8" Bentonite Chips	
		16 to 28	#2/12 Sand	

Description

Modifier and Main Soil; color; impact; consistency/density; odor; moisture; USCS

Depth (ft)	SAMPLE TYPE	SAMPLE NUMBER				Blow Counts	PID (ppm)	Description
		1ST 6"	2ND 6"	3RD 6"	4TH 6"			
21-								
22-								
23-								
24-	S.S.	3	5	6	CL	0	SANDY-CLAY yellowish-brown (7.5 yr 5/6) mottled olive-grey sampled @ 9:50	
25-								
26-								
27-	S.S.	9	7	6	CL	0	Gravelly-Sand w/some clay stiff very moist to wet sampled @ 10:00	
28-								
29-							NOTES: terminate borehole at 28' bgs @ 10:00 10' PVC screen w/ .010 slot 18' PVC riser	
30-								
31-								
32-								
33-								
34-								
35-								
36-								
37-								
38-								
39-								
40-								

Notes: Brass sample tubes = 6" in length
 Sand #2/12 Monterrey 50# bags:5.5 Type II-IV cement 94# bags:
 Bentonite chips 3/8" 50lbs bag



PLS SURVEYS, INC.
 LAND & HYDROGRAPHIC SURVEYORS
 2220 Livingston Street, Suite 202
 Oakland, California 94606-5203
 510.261.0900 FAX 510.261.3303
 e-mail: plssurv@pacbell.net

Earthgrains Site

955 Kennedy St.

OAKLAND CALIFORNIA

SCALE	1"=80'
DATE	01/28/09
BY	JMB/JTH
JOB NO.	09-001

CONFIDENTIAL

STATE OF CALIFORNIA DWR
WELL COMPLETION REPORT
(WELL LOGS)

REMOVED



Project: Earthgrains UST Clean-up **Boring No.:** MW-103 **Page(s):** 1 of 2
Client: Earthgrains Baking Companies, Inc. **Project #:** 62402797 / 024530 **Date:** 1/19/2009
Location: Oakland, CA **Coordinates:** LAT 37.7789437 LON -122.2399131 **Datum:** NAD 83

BORING/WELL CONSTRUCTION LOG

Drilling Company: Gregg Drilling & Testing, Inc. **Driller:** Jason Weff **Logger:** Brendon J. Wilder

WELL CONSTRUCTION SUMMARY

Depth (ft)	Casing	Depth (ft)	Annulus	Surface Completion
0 to 10	2" PVC Sch. 40	0 to 6	Type II-IV Cement	
10 to 25	2" PVC 0.01" Sch. 40	6 to 8	3/8" Bentonite Chips	
		8 to 25	#2/12 Sand	

Description

Modifier and Main Soil; color; impact; consistency/density; odor; moisture; USCS

Surface Vault

Depth (ft)	SAMPLE TYPE	Blow Counts				USCS	PID (ppm)	Description	Surface Vault
		1ST 6"	2ND 6"	3RD 6"	4TH 6"				
0-1							Top 1' concrete		
1-5							Air Knifed/ Hand augered to 5' below ground surface Drilled borehole using 8" hollow stem augers w/ California Modified Split-Spoon Sampling		
5-6	S.S.	4	5	5	CL	0	SILTY-CLAY w/ trace sand dark brown (5YR 2.5/1) mottled grey Soft to firm damp sampled @ 13:15		
6-9	S.S.	2	2	3		0	SANDY-CLAY very soft and wet sampled @ 13:20		
9-14							approximately 12' = SILTY-SAND		
14-15	S.S.	2	1	0		0	NO RECOVERY		
15-18									
18-19	S.S.	5	8	14	CL	0	SANDY-CLAY w/ some sub-angular gravels stiff to hard and wet sampled @ 13:30		
19-20									

Notes: Brass sample tubes = 6" in length
 Sand #2/12 Monterrey 50# bags:8 Type II-IV cement 94# bags:
 Bentonite chips 3/8" 50lbs bag



Project: Earthgrains UST Clean-up **Boring No.:** MW-103 **Page(s):** 2 of 2
Client: Earthgrains Baking Companies, Inc. **Project #:** 62402797 / 024530 **Date:** 1/19/2009
Location: Oakland, CA **Coordinates:** LAT 37.7789437 LON -122.2399131 **Datum:** NAD 83

BORING/WELL CONSTRUCTION LOG

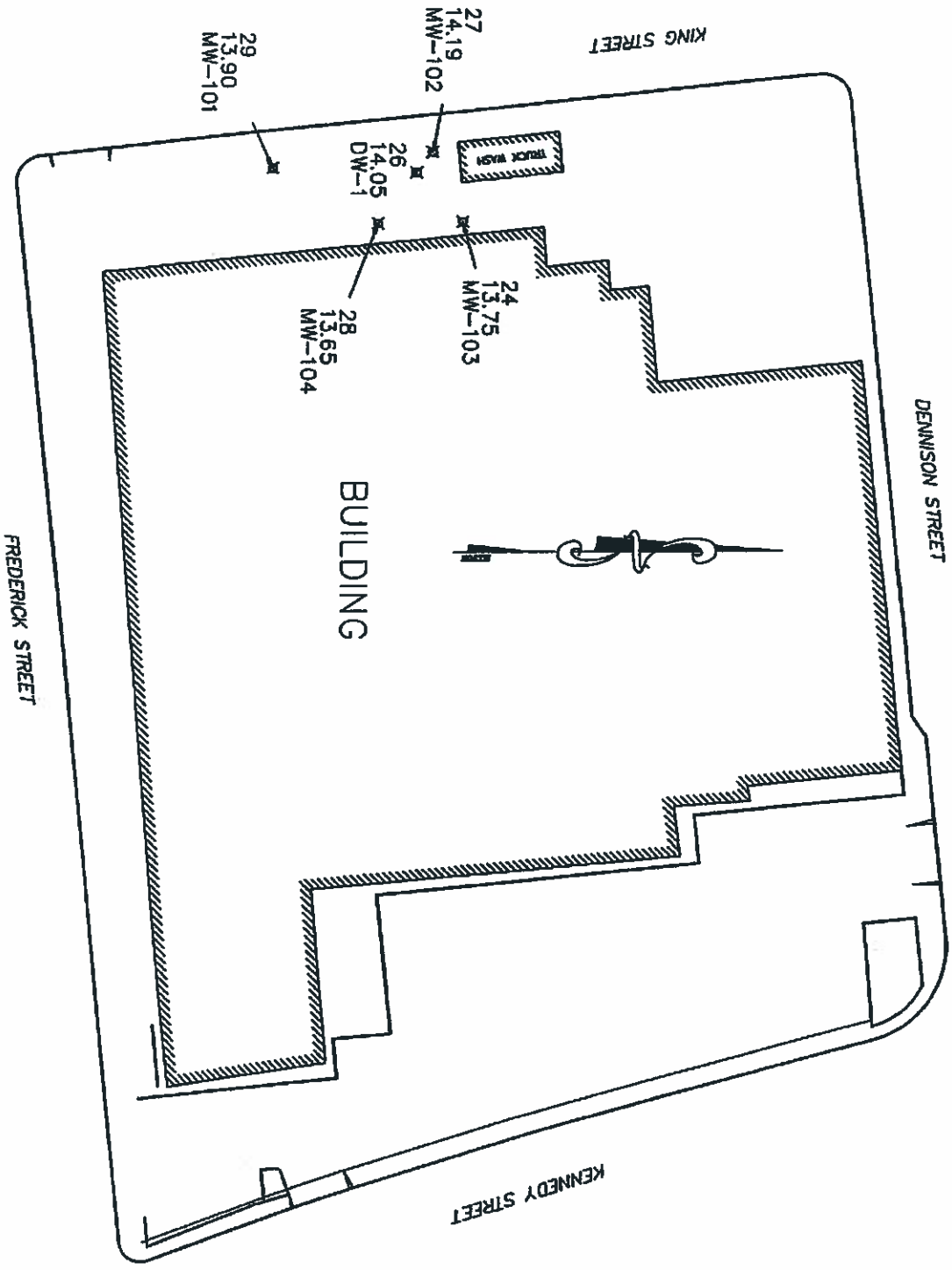
Drilling Company: Gregg Drilling & Testing, Inc. **Driller:** Jason Weff **Logger:** Brendon J. Wilder

Depth (ft)	SAMPLE TYPE	SAMPLE NUMBER	Blow Counts				PID (ppm)	WELL CONSTRUCTION SUMMARY				
			1ST 6"	2ND 6"	3RD 6"	4TH 6"		Depth (ft)	Casing	Depth (ft)	Annulus	Surface Completion
								0 to 10	2" PVC Sch. 40	0 to 6	Type II-IV Cement	
			10 to 25	2" PVC 0.01" Sch. 40	6 to 8	3/8" Bentonite Chips						
8 to 25	#2/12 Sand											

Description						
Modifier and Main Soil; color; impact; consistency/density; odor; moisture; USCS						
21-						
22-						
23-						
24-	s.s.	10	15	25	0	changed @ approximately 19.5' bgs to CLAYEY-GRAVEL w/ sand sub-angular gravels up to 1" moist and very stiff sampled @ 13:40
25-						

26-						NOTES: terminate borehole at 25' bgs @ 13:40 15' PVC screen w/ .010 slot 10' PVC riser
27-						
28-						
29-						
30-						
31-						
32-						
33-						
34-						
35-						
36-						
37-						
38-						
39-						
40-						

Notes: Brass sample tubes = 6" in length
 Sand #2/12 Monterrey 50# bags:8 Type II-IV cement 94# bags:
 Bentonite chips 3/8" 50lbs bag



PLS SURVEYS, INC.
 LAND & HYDROGRAPHIC SURVEYORS
 2220 Livingston Street, Suite 202
 Oakland, California 94606-5203
 510.261.0900 FAX 510.261.3303
 e-mail: pls surv@pacbell.net

Earthgrains Site

955 Kennedy St.

OAKLAND CALIFORNIA

SCALE	1"=80'
DATE	01/28/09
BY	JMB/JTH
JOB NO.	09-001

CONFIDENTIAL

STATE OF CALIFORNIA DWR
WELL COMPLETION REPORT
(WELL LOGS)

REMOVED



Project: Earthgrains UST Clean-up Boring No.: MW-104 Page(s): 1 of 2
 Client: Earthgrains Baking Companies, Inc. Project #: 62402797 / 024530 Date: 1/20/2009
 Location: Oakland, CA Coordinates: LAT 37.7788276 LON -122.2399077 Datum: NAD 83

BORING/WELL CONSTRUCTION LOG

Drilling Company: Gregg Drilling & Testing, Inc. Driller: Jason Weff Logger: Brendon J. Wilder

Depth (ft)	SAMPLE TYPE	SAMPLE NUMBER	Blow Counts				USCS	PID (ppm)	WELL CONSTRUCTION SUMMARY				Surface Completion
			1ST 6"	2ND 6"	3RD 6"	4TH 6"			Depth (ft)	Casing	Depth (ft)	Annulus	
									0 to 10	2" PVC Sch. 40	0 to 6	Type II-IV Cement	
								10 to 25	2" PVC 0.01" Sch. 40	6 to 8	3/8" Bentonite Chips		
										8 to 25	#2/12 Sand		
Description													
Modifier and Main Soil, color; Impact; consistency/density; odor; moisture; USCS													
									Top 1' concrete				
1									Air Knifed/ Hand augered to 5' below ground surface in remarked native fill				
2									Drilled borehole using 8" hollow stem augers w/ California Modified Split- Spoon Sampling				
3													
4													
5													
6	S.S.	1	2	5			0		SILTY-CLAY (7.5 YR 3/3) w/ some sand and trace gravel mottled grey (10 YR 4/2) medium stiff moist sampled @ 7:50				
7													
8													
9	S.S.	2	2	3			0		no sand no gravel change to very dary greenish-grey (GLEY 1 2.5/1) moist and stiff sampled @ 7:55				
10													
11													
12													
13													
14	S.S.	3	4	6			0		change to mottled dark grey (10 YR 4/2) and dark yellowish brown (10 YR 3/4) stiff to hard and moist sampled @ 8:00				
15													
16													
17													
18													
19	S.S.	6	11	12			0		SILTY-CLAY w/ some sand and some sub-angular gravels stiff and moist sampled @ 8:10				
20													

Notes: Brass sample tubes = 6" in length
 Sand #2/12 Monterrey 50# bags:8 Type II-IV cement 94# bags:
 Bentonite chips 3/8" 50lbs bag



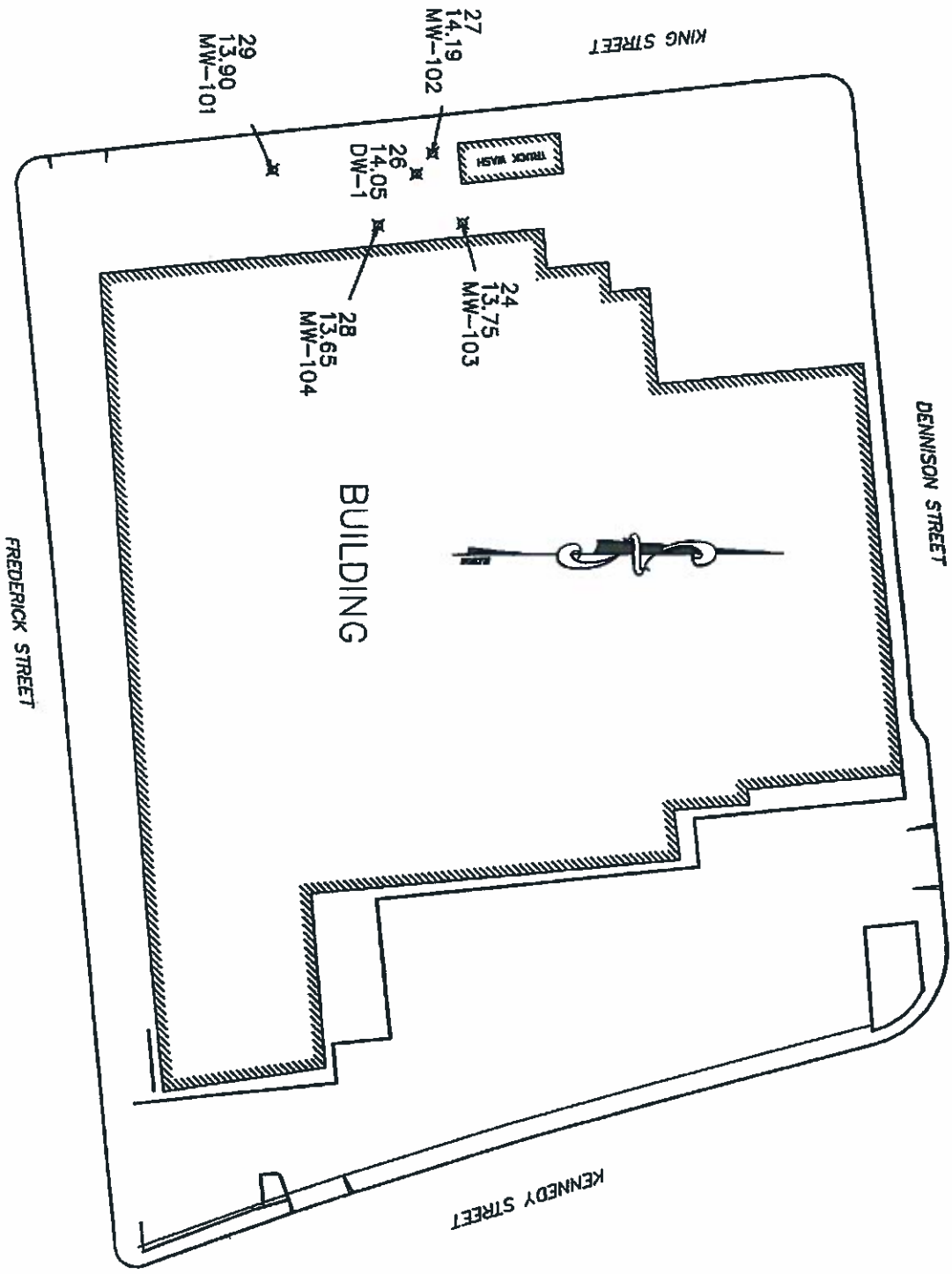
Project: **Earthgrains UST Clean-up** Boring No.: **MW-104** Page(s): **2 of 2**
 Client: **Earthgrains Baking Companies, Inc.** Project #: **62402797 / 024530** Date: **1/20/2009**
 Location: **Oakland, CA** Coordinates: **LAT 37.7788276 LON -122.2399077** Datum: **NAD 83**

BORING/WELL CONSTRUCTION LOG
 Drilling Company: **Gregg Drilling & Testing, Inc.**

Driller: **Jason Weff** Logger: **Brendon J. Wilder**

Depth (ft)	SAMPLE TYPE	SAMPLE NUMBER	Blow Counts				PID (ppm)	WELL CONSTRUCTION SUMMARY						
			1ST 6"	2ND 6"	3RD 6"	4TH 6"		Depth (ft)	Casing	Depth (ft)	Annulus	Surface Completion		
								0 to 10	2" PVC Sch. 40	0 to 6	Type II-IV Cement			
							10 to 25	2" PVC 0.01" Sch. 40	6 to 8	3/8" Bentonite Chips				
									8 to 25	#2/12 Sand				
							Description Modifier and Main Soil; color; impact; consistency/density; odor; moisture; USCS							
21-														
22-														
23-														
24-	S.S.		3	4	5	0	changed @ approximately 19' bgs to GRAVELLY-CLAY dark greyish-brown (2.5 YR 4/2) w/ some sand some sub-angular gravels up to 1" soft and very moist							
25-							NOTES: terminate borehole at 25' bgs @ 8:20 15' PVC screen w/ .010 slot 10' PVC riser							
26-														
27-														
28-														
29-														
30-														
31-														
32-														
33-														
34-														
35-														
36-														
37-														
38-														
39-														
40-														

Notes: Brass sample tubes = 6" in length
 Sand #2/12 Monterrey 50# bags:8 Type II-IV cement 94# bags:
 Bentonite chips 3/8" 50lbs bag



PLS SURVEYS, INC. 
 LAND & HYDROGRAPHIC SURVEYORS
 2220 Livingston Street, Suite 202
 Oakland, California 94606-5203
 510.261.0900 FAX 510.261.3303
 e-mail: pls surv@pacbell.net

Earthgrains Site

955 Kennedy St.

OAKLAND

CALIFORNIA

SCALE	1"=80'
DATE	01/28/09
BY	JMB/JTH
JOB NO.	09-001