



Chevron

SNIC 4315

June 23, 1999

Chevron Products Company
6001 Bollinger Canyon Road
Building L, Room 1080
PO Box 6004
San Ramon, CA 94583-0904

Mr. Ravi Arulananthum
RWQCB San Francisco Bay Region
2101 Webster Street, Suite 500
Oakland, CA 94612

Philip R. Briggs
Project Manager
Site Assessment & Remediation
Phone 925 842-9136
Fax 925 842-8370

Re: Chevron Former Asphalt Plant #206265(1001067)
Powell Street and Lauregan Street
Emeryville, California

Dear Mr. Arulananthum:

Enclosed is the Second Quarter Groundwater Monitoring Report for 1999 that was prepared by our consultant Blaine Tech Services Inc. for the above noted site. Ground water samples were collected and analyzed for TPH-g, BTEX, MtBE and HVOC constituents. Monitoring wells MW-2A, MW-7, MW-8, MW-10, MW-11, MW-13, MW-15, MW-17, MW-18 and MW-19A are sampled semi-annually (2nd and 4th quarters).

The concentrations were below method detection limits for all constituents in monitoring wells MW-7, MW-8, MW-11, MW-13 and MW-18, while in monitoring well MW-10 the BTEX and TPH-g constituents were below method detection limits. In monitoring well MW-2A the TEX and MtBE constituents were below method detection limits. Monitoring wells MW-13, MW-17, and MW-19A were inaccessible due to cars parked over the wells. No sample was taken from well MW-15 due to the well being filled with dirt and a slow recharge.

HVOC's were below method detection limits in monitoring wells MW-2A, MW-7, MW-8 and MW-13 for all of the ten analytes sampled. The method detection limit for well MW-2A was <1.25ppb for all constituents except VC, which was <2.50. In well MW-10 the HVOC's were below method detection limits in six of the ten analytes sampled, while in well MW-11 the HVOC's were below method detection limits in seven of the ten analytes sampled. In well MW-18 the HVOC's were below method detection limits in four of the ten analytes sampled.

99 JUN 28 PM 3:26
ENVIRONMENTAL PROTECTION

June 23, 1999
Mr. Arulananthum
Former Chevron Asphalt Plant #206265 (1001067)
Page 2

Depth to ground water varied from 2.62 feet to 5.75 feet below grade with a direction of flow southwesterly.

Chevron will continue to monitor the site as noted above. If you have any question, call me at (925) 842-9136.

Sincerely,
CHEVRON PRODUCTS COMPANY



Philip R. Briggs
Site Assessment and Remediation Project Manager

Enclosure

CC. Ms. Susan Hugo
Alameda County Health Care Services
Division of Environmental Protection
1131 Harbor Bay Parkway, Suite 250
Alameda, CA 94502-6577

Ms. Bette Owen, Chevron



1680 ROGERS AVENUE
SAN JOSE, CALIFORNIA 95112-1105
(408) 573-7771 FAX
(408) 573-0555 PHONE

June 9, 1999

Phil Briggs
Chevron U.S.A. Products Company
P.O. Box 6004
San Ramon, CA 94583-0904

2nd Quarter 1999 Monitoring at 206265

Second Quarter 1999 Groundwater Monitoring at
Former Chevron Service Station Number 206265
Powell and Landregan
Emeryville, CA

Monitoring Performed on April 15, 1999

Groundwater Sampling Report 990415-J-1

This report covers the routine monitoring of groundwater wells at this Chevron facility. Blaine Tech Services, Inc.'s work at the site includes inspection, gauging, evacuation, purgewater containment, sample collection and sample handling in accordance with standard procedures that conform to Regional Water Quality Control Board requirements.

Routine field data collection includes depth to water, total well depth, thickness of any separate immiscible layer, water column volume, calculated volume of a three-case volume purge, elapsed evacuation time, total volume of water removed, and standard water parameter instrument readings. Sample material is collected, contained, stored, and transported to the laboratory in conformance with EPA standards. Purgewater is, likewise, collected and transported to McKittrick Waste Treatment Site for disposal.

Basic field information is presented alongside analytical values excerpted from the laboratory report in the cumulative table of **WELL DATA AND ANALYTICAL RESULTS**. The full analytical report for the most recent samples is located in the **Analytical Appendix**. The table also contains new groundwater elevation calculations taken from the computer plotted gradient map which is located in the **Professional Engineering Appendix**.

At a minimum, Blaine Tech Services, Inc. field personnel are certified upon completion of a forty-hour Hazardous Materials and Emergency Response training course per 29 CFR 1910.120. Field personnel are also enrolled in annual eight hour refresher courses.

Blaine Tech Services, Inc. conducts sampling and documentation assignments of this type as an independent third party. In order to avoid compromising the objectivity necessary for the proper and disinterested performance of this work, Blaine Tech Services, Inc. concentrates on objective data collection and does not participate in the interpretation of analytical results, the definition of geological or hydrological conditions, the formulation of recommendations, or the marketing of remedial systems.

Please call if you have any questions.

Yours truly,

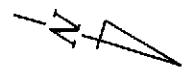
A handwritten signature in black ink that reads "Christine Lillie". The signature is written in a cursive style with a small horizontal line above the "i" in "Lillie".

Christine Lillie
Project Coordinator

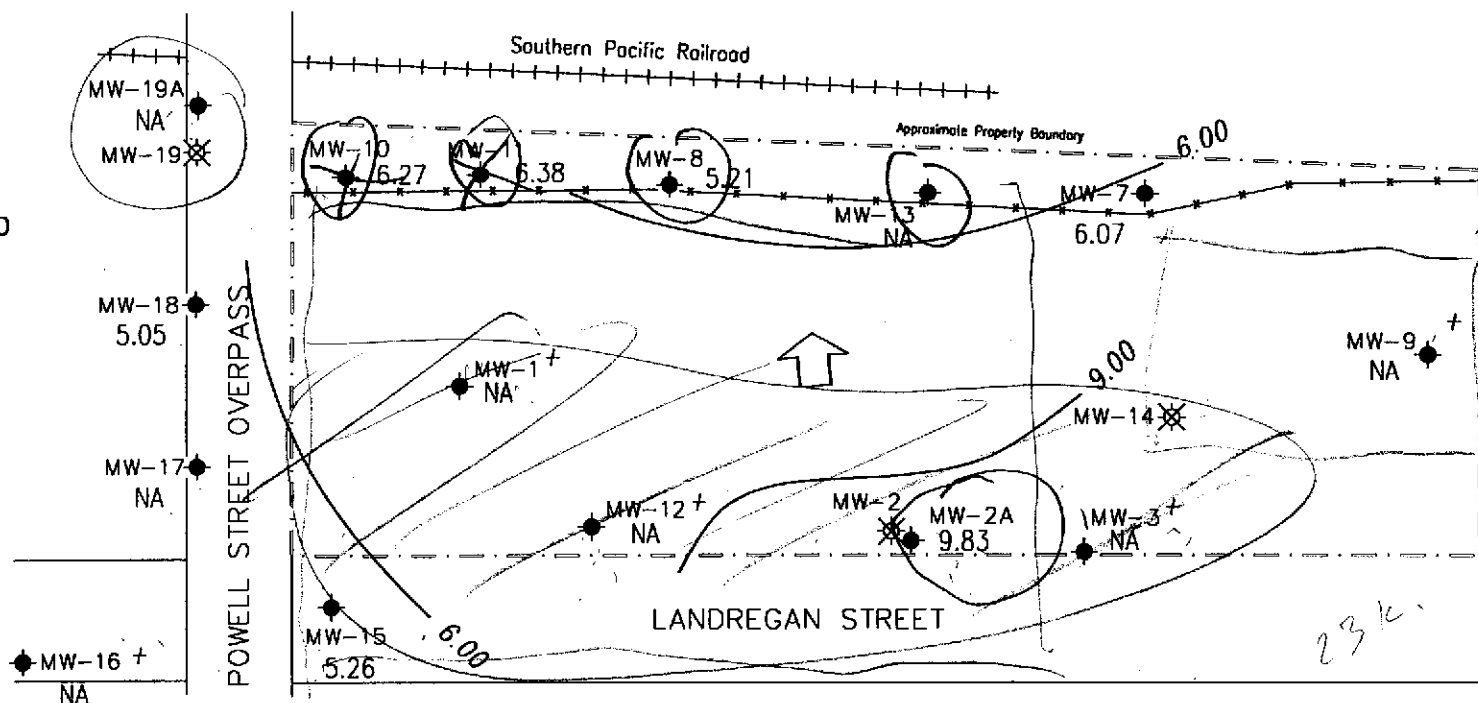
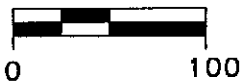
CAL/sb

attachments: Professional Engineering Appendix
Cumulative Table of Well Data and Analytical Results
Analytical Appendix
Field Data Sheets

Professional Engineering Appendix



SCALE (ft)



EXPLANATION:

- ◆ Groundwater monitoring well
- ⊗ Abandoned groundwater monitoring well
- + Well not located, buried or destroyed
- 5.26 Groundwater elevation (ft, msl)
- 6.00 — Groundwater elevation contour (ft, msl)
- NA Data not available
- ↗ Approximate groundwater flow direction; Approximate gradient = 0.01



Ref. 206265-qm.dwg
Basemap from Geller-Ryan, Inc.

PREPARED BY



Former Chevron Asphalt Plant 206265
and Terminal No. 206265
Emeryville, California

GROUNDWATER ELEVATION CONTOUR MAP,
APRIL 15, 1999

FIGURE:
1
PROJECT:
DAC04

Table of Well Data and Analytical Results

Cumulative Table of Well Data and Analytical Results

Vertical Measurements are in feet.				Volumetric Measurements are in gallons.				Analytical results are in parts per billion (ppb)						
DATE	Well Head Elev.	Ground Water Elev.	Depth To Water	SPH Thickness	SPH Removed	Total SPH Removed	Notes	TPH-Gasoline	Benzene	Toluene	Ethyl-Benzene	Xylene	MTBE	Oil & Grease
MW-1														
04/26/85	10.67	--	--	--	--	--	--	--	99	--	--	6.0	--	--
09/11/87	10.67	--	--	--	--	--	--	--	63	--	--	--	--	--
07/07/88	10.67	--	--	--	--	--	--	<100	55	--	--	--	--	--
04/13/89	10.67	6.95	3.72	--	--	--	+	--	--	--	--	--	--	--
04/14/89	10.67	--	--	--	--	--	+	<5000	34	<5.0	<5.0	<10	--	--
07/31/89	10.67	4.95	5.72	--	--	--	+	7000	57	1.2	<0.2	1.6	--	--
12/08/89	10.67	5.87	4.80	--	--	--	+	--	26	0.4	0.9	2.0	--	--
03/21/90	10.67	5.93	4.74	--	--	--	+	3500	120	9.0	3.0	3.0	--	--
06/19/90	10.67	5.92	4.75	--	--	--	+	2700	100	<0.3	<0.3	7.0	--	--
09/20/90	10.67	5.60	5.07	--	--	--	+	--	--	--	--	--	--	--
09/21/90	10.67	--	--	--	--	--	+	2200	120	2.0	2.0	0.79	--	--
12/28/90	10.67	5.76	4.91	--	--	--	+	720	44	2.0	<0.5	9.0	--	--
05/10/91	10.67	5.37	5.30	--	--	--	+	530	47	2.0	0.5	8.0	--	--
08/08/91	10.67	4.82	5.85	--	--	--	+	1400	37	8.3	3.7	12	--	--
11/27/91	10.67	5.54	5.13	--	--	--	+	840	16	7.1	4.5	11	--	--
01/29/92	10.67	5.85	4.82	--	--	--	+	350	18	9.3	3.7	7.7	--	--
03/26/92	10.67	6.35	4.32	--	--	--	+	420*	19	2.2	1.2	4.0	--	--
07/23/92	10.67	5.25	5.42	--	--	--	+	4000*	50	82	40	160	--	--
10/28/92	10.67	5.11	5.56	--	--	--	+	980	36	6.7	3.0	10	--	--
05/04/93	10.67	4.37	6.30	--	--	--	+	650	9.4	2.4	1.2	4.5	--	--
01/05/94	10.67	--	--	--	--	--	Inaccessible	--	--	--	--	--	--	--

NO LONGER MONITORED OR SAMPLED

+ See Table of Additional Analyses

* Chromatogram pattern indicates an unidentified hydrocarbon.

Cumulative Table of Well Data and Analytical Results

Vertical Measurements are in feet.				Volumetric Measurements are in gallons.				Analytical results are in parts per billion (ppb)						
DATE	Well Head Elev.	Ground Water Elev.	Depth To Water	SPH Thickness	SPH Removed	Total SPH Removed	Notes	TPH-Gasoline	Benzene	Toluene	Ethyl-Benzene	Xylene	MTBE	Oil & Grease
MW-2														
04/26/85	13.78	--	--	--	--	--	--	--	<10	--	--	--	--	--
09/11/87	13.78	--	--	--	--	--	--	--	--	--	--	--	--	--
07/07/88	13.78	--	--	--	--	--	--	<100	<5.0	--	--	--	--	--
04/13/89	13.78	11.16	2.62	--	--	--	--	--	--	--	--	--	--	--
4/14/89*	13.78	--	--	--	--	--	--	<100	<0.2	<0.2	<0.2	<0.4	--	--
07/31/89	13.78	9.15	4.63	--	--	--	+	<100	<0.2	<1.0	<0.2	<0.4	--	--
12/08/89	13.78	7.80	5.98	--	--	--	+	--	<0.3	<0.3	<0.3	<0.6	--	--
03/21/90	13.78	7.93	5.85	--	--	--	+	<50	<0.3	<0.3	<0.3	<0.6	--	--
06/19/90	13.78	7.83	5.95	--	--	--	+	<50	<0.3	<0.3	<0.3	<0.6	--	--
09/20/90	13.78	6.92	6.86	--	--	--	+	--	--	--	--	--	--	--
09/21/90	13.78	--	--	--	--	--	+	<50	<1.5	<1.5	<1.5	<4.5	--	--
12/28/90	13.78	7.44	6.34	--	--	--	+	<50	<0.5	<0.5	<0.5	<0.5	--	--
05/10/91	13.78	7.82	5.96	--	--	--	+	<50	<0.5	<0.5	<0.5	<0.5	--	--
08/08/91	13.78	6.12	7.66	--	--	--	+	<50	<0.5	<0.5	<0.5	<0.5	--	--
11/27/91	13.78	5.74	8.04	--	--	--	+	<50	<0.5	<0.5	<0.5	<0.5	--	--
01/29/92	13.78	7.77	6.01	--	--	--	+	<50	<0.5	<0.5	<0.5	<0.5	--	--
03/26/92	13.78	7.68	6.10	--	--	--	+	<50	<0.5	<0.5	<0.5	<0.5	--	--
07/23/92	13.78	6.39	7.39	--	--	--	+	<50	<0.5	<0.5	<0.5	0.8	--	--
10/28/92	13.78	6.27	7.51	--	--	--	+	55	1.3	6.9	1.1	5.1	--	--
05/04/93	13.78	--	--	--	--	--	Inaccessible	--	--	--	--	--	--	--
01/05/94	13.78	--	--	--	--	--	Inaccessible	--	--	--	--	--	--	--
10/24/94	13.78	--	--	--	--	--	Dry	--	--	--	--	--	--	--
04/19/95	13.78	11.28	2.51	0.01	--	--	--	--	--	--	--	--	--	--
11/06/95	13.78	--	--	--	--	--	Abandoned	--	--	--	--	--	--	--

+ See Table of Additional Analyses.

Cumulative Table of Well Data and Analytical Results

Vertical Measurements are in feet.

Volumetric Measurements are in gallons.

Analytical results are in parts per billion (ppb)

DATE	Well Head Elev.	Ground Water Elev.	Depth To Water	SPH Thickness	SPH Removed	Total SPH Removed	Notes	TPH-Gasoline	Benzene	Toluene	Ethyl-Benzene	Xylene	MTBE	Oil & Grease	
MW-2A															
11/06/95	12.45	7.94	4.51	--	--	--	+	<50	<0.5	<0.5	<0.5	<0.5	<5.0	--	
04/26/96	12.45	8.35	4.10	--	--	--	+	<50	<0.5	<0.5	<0.5	<0.5	<5.0	--	
10/10/96	12.45	7.13	5.32	--	--	--	+	60*	<0.5	<0.5	<0.5	<0.5	<5.0	--	
04/22/97	12.45	8.50	3.95	--	--	--	+	<50	0.8	<0.5	<0.5	<0.5	<5.0	--	
10/16/97	12.45	7.77	4.68	--	--	--	+	80	<0.5	<0.5	<0.5	<0.5	<5.0	--	
05/04/98	12.45	8.91	3.54	--	--	--	+	96*	<0.5	<0.5	<0.5	<0.5	<2.5	--	
10/27/98	12.45	7.31	5.14	--	--	--	+	170*	<0.5	<0.5	<0.5	9.6	44	--	
10/27/98	12.45	7.31	5.14	--	--	--	Confirmation run	--	--	--	--	--	<2.0	--	
04/15/99	12.45	9.83	2.62	--	--	--	+	116	0.609	<0.5	<0.5	<0.5	<5.0	--	

+ See Table of Additional Analyses

* Chromatogram pattern indicates an unidentified hydrocarbon.

Cumulative Table of Well Data and Analytical Results

Vertical Measurements are in feet.

Volumetric Measurements are in gallons.

Analytical results are in parts per billion (ppb)

DATE	Well Head Elev.	Ground Water Elev.	Depth To Water	SPH Thickness	SPH Removed	Total SPH Removed	Notes	TPH-Gasoline	Benzene	Toluene	Ethyl-Benzene	Xylene	MTBE	Oil & Grease	
MW-3															
04/26/85	11.73	--	--	--	--	--	--	--	<10	--	--	--	--	--	
09/11/87	11.73	--	--	--	--	--	--	--	<0.5	--	--	--	--	--	
07/07/88	11.73	--	--	--	--	--	--	<100	<5.0	--	--	--	--	--	
04/13/89	11.73	9.39	2.34	--	--	--	--	--	--	--	--	--	--	--	
04/14/89	11.73	--	--	--	--	--	+	<100	<0.2	<0.2	<0.2	<0.4	--	<3,000,000	
07/31/89	11.73	6.94	4.79	--	--	--	+	<100	<0.2	<1.0	<0.2	<0.4	--	--	
12/08/89	11.73	8.70	3.03	--	--	--	+	--	<0.3	<0.3	<0.3	<0.6	--	--	
03/21/90	11.73	9.18	2.55	--	--	--	+	<50	<0.3	<0.3	<0.3	<0.6	--	--	
06/19/90	11.73	8.97	2.76	--	--	--	+	<50	<0.3	<0.3	<0.3	<0.6	--	--	
09/20/90	11.73	7.30	4.43	--	--	--	+	--	--	--	--	--	--	--	
09/21/90	11.73	--	--	--	--	--	+	<50	<0.3	<0.3	<0.3	<0.6	--	--	
12/28/90	11.73	8.06	3.67	--	--	--	+	<50	<0.5	<0.5	<0.5	<0.5	--	--	
05/10/91	11.73	8.90	2.83	--	--	--	+	<50	<0.5	<0.5	<0.5	<0.5	--	--	
08/08/91	11.73	6.64	5.09	--	--	--	+	<50	<0.5	<0.5	<0.5	<0.5	--	--	
11/27/91	11.73	6.36	5.37	--	--	--	+	<50	<0.5	<0.5	<0.5	<0.5	--	--	
01/29/92	11.73	8.27	3.46	--	--	--	+	<50	<0.5	<0.5	<0.5	<0.5	--	--	
03/26/92	11.73	9.63	2.10	--	--	--	+	<50	<0.5	<0.5	<0.5	<0.5	--	--	
07/23/92	11.73	7.13	4.60	--	--	--	+	<50	<0.5	<0.5	<0.5	<0.5	--	--	
10/28/92	11.73	6.66	5.07	--	--	--	+	92	1.8	12	2.0	10	--	--	
05/04/93	11.73	--	--	--	--	--	Inaccessible	--	--	--	--	--	--	--	
01/05/94	11.73	--	--	--	--	--	Inaccessible	--	--	--	--	--	--	--	

NO LONGER MONITORED OR SAMPLED

MW-4

04/26/85	--	--	--	--	--	--	--	3100	<10	--	--	--	--	--
09/11/87	--	--	--	--	--	--	--	--	<0.5	--	--	--	--	--
07/07/88	--	--	--	--	--	--	--	<100	<5.0	--	--	--	--	--
04/13/89	--	--	2.12	--	--	--	--	--	--	--	--	--	--	--
04/14/89	--	--	--	--	--	--	+	380*	<0.5	<1.0	<1.0	<1.0	--	<3,000,000

NO LONGER MONITORED OR SAMPLED

+ See Table of Additional Analyses.

* TPH was reported as Diesel #2.

Cumulative Table of Well Data and Analytical Results

Vertical Measurements are in feet.				Volumetric Measurements are in gallons.			Analytical results are in parts per billion (ppb)							
DATE	Well Head Elev.	Ground Water Elev.	Depth To Water	SPH Thickness	SPH Removed	Total SPH Removed	Notes	TPH-Gasoline	Benzene	Toluene	Ethyl-Benzene	Xylene	MTBE	Oil & Grease
MW-5														
04/26/85	--	--	--	--	--	--	--	1600	<100	--	--	--	--	--
09/11/87	--	--	--	--	--	--	--	--	<10	--	--	--	--	--
07/07/88	--	--	--	--	--	--	--	<100	<5.0	--	--	--	--	--
04/13/89	--	--	2.79	--	--	--	--	--	--	--	--	--	--	--
04/14/89	--	--	--	--	--	--	+	4300*	<0.5	<1.0	<1.0	<1.0	--	<3,000,000

NO LONGER MONITORED OR SAMPLED

MW-6														
04/26/85	--	--	--	--	--	--	--	580	<100	--	--	--	--	--
09/11/87	--	--	--	--	--	--	--	--	<10	--	--	--	--	--
07/07/88	--	--	--	--	--	--	--	8000	<5.0	--	--	--	--	--
04/13/89	--	--	1.90	--	--	--	--	--	--	--	--	--	--	--
04/14/89	--	--	--	--	--	--	+	3300*	<0.5	<1.0	<1.0	<1.0	--	<3,000,000

NO LONGER MONITORED OR SAMPLED

+ See Table of Additional Analyses.
 * TPH was reported as Diesel #2.

Cumulative Table of Well Data and Analytical Results

Vertical Measurements are in feet.

Volumetric Measurements are in gallons.

Analytical results are in parts per billion (ppb)

DATE	Well Head Elev.	Ground Water Elev.	Depth To Water	SPH Thickness	SPH Removed	Total SPH Removed	Notes	TPH-Gasoline	Benzene	Toluene	Ethyl-Benzene	Xylene	MTBE	Oil & Grease
MW-7														
04/26/85	10.47	--	--	--	--	--	--	700	ND	--	--	--	--	--
09/11/87	10.47	--	--	--	--	--	--	--	<10	--	--	--	--	--
07/07/88	10.47	--	--	--	--	--	--	17,000	<5.0	--	--	--	--	--
04/13/89	10.47	8.57	1.90	--	--	--	--	--	--	--	--	--	--	--
04/14/89	10.47	--	--	--	--	--	+	<50	<0.5	<1.0	<1.0	<1.0	--	<3,000,000
07/31/89	10.47	6.23	4.24	--	--	--	+	160*	<0.1	<0.5	<0.1	<0.2	--	--
07/31/89	10.47	--	--	--	--	--	+	100*	<0.1	<0.5	<0.1	<0.2	--	--
12/08/89	10.47	7.82	2.65	--	--	--	+	--	<0.3	<0.3	<0.3	<0.6	--	--
03/21/90	10.47	7.71	2.76	--	--	--	+	<50	<0.3	<0.3	<0.3	0.6	--	--
06/19/90	10.47	7.23	3.24	--	--	--	+	<50	<0.3	<0.3	<0.3	0.6	--	--
09/20/90	10.47	5.90	4.57	--	--	--	+	--	--	--	--	--	--	--
09/21/90	10.47	--	--	--	--	--	+	<50	1.5	<0.3	<0.3	<0.6	--	--
12/28/90	10.47	7.35	3.12	--	--	--	+	<50	0.7	<0.5	<0.5	0.7	--	--
05/10/91	10.47	6.94	3.53	--	--	--	+	<50	<0.5	<0.5	<0.5	<0.5	--	--
08/08/91	10.47	5.83	4.64	--	--	--	+	<50	<0.5	<0.5	<0.5	<0.5	--	--
11/27/91	10.47	6.81	3.66	--	--	--	+	<50	<0.5	<0.5	<0.5	<0.5	--	--
01/29/92	10.47	7.23	3.24	--	--	--	+	<50	<0.5	<0.5	<0.5	0.9	--	--
03/26/92	10.47	7.86	2.61	--	--	--	+	<50	<0.5	<0.5	<0.5	0.9	--	--
07/23/92	10.47	6.28	4.19	--	--	--	+	<50	<0.5	<0.5	<0.5	<0.5	--	--
10/28/92	10.47	6.08	4.39	--	--	--	+	<50	<0.5	<0.5	<0.5	<0.5	--	--
05/04/93	10.47	--	--	--	--	--	Inaccessible	--	--	--	--	--	--	--
01/05/94	10.47	--	--	--	--	--	Inaccessible	--	--	--	--	--	--	--
05/13/94	10.47	6.06	4.41	--	--	--	+	<50	<0.5	<0.5	<0.5	<0.5	--	--
10/24/94	10.47	5.44	5.03	--	--	--	+	<50	<0.5	<0.5	<0.5	<0.5	--	--
04/19/95	10.47	5.94	4.53	--	--	--	+	<50	<0.5	<0.5	<0.5	<0.5	--	--
11/06/95	10.47	5.36	5.11	--	--	--	+	<50	<0.5	<0.5	<0.5	<0.5	<5.0	--

CONTINUED ON NEXT PAGE

+ See Table of Additional Analyses.

* TPH was reported as Diesel #2.

Cumulative Table of Well Data and Analytical Results

Vertical Measurements are in feet.		Volumetric Measurements are in gallons.				Analytical results are in parts per billion (ppb)								
DATE	Well Head Elev.	Ground Water Elev.	Depth To Water	SPH Thickness	SPH Removed	Total SPH Removed	Notes	TPH-Gasoline	Benzene	Toluene	Ethyl-Benzene	Xylene	MTBE	Oil & Grease
MW-7 (CONT'D)														
04/26/96	10.47	6.07	4.40	--	--	--	+	<50	<0.5	<0.5	<0.5	<0.5	<5.0	--
10/10/96	10.47	5.45	5.02	--	--	--	+	<50	<0.5	<0.5	<0.5	<0.5	<5.0	--
04/22/97	10.47	5.93	4.54	--	--	--	+	<50	<0.5	<0.5	<0.5	<0.5	<5.0	--
10/16/97	10.47	6.05	4.42	--	--	--	+	<50	<0.5	<0.5	<0.5	<0.5	<2.5	--
05/04/98	10.47	6.05	4.42	--	--	--	+	<50	<0.5	<0.5	<0.5	<0.5	<2.5	--
10/27/98	10.47	5.66	4.81	--	--	--	+	<50	<0.5	<0.5	<0.5	<0.5	<2.5	--
04/15/99	10.47	6.07	4.40	--	--	--	+	<50	<0.5	<0.5	<0.5	<0.5	<5.0	--

+ See Table of Additional Analyses.

Cumulative Table of Well Data and Analytical Results

Vertical Measurements are in feet.

Volumetric Measurements are in gallons.

Analytical results are in parts per billion (ppb)

DATE	Well Head Elev.	Ground Water Elev.	Depth To Water	SPH Thickness	SPH Removed	Total SPH Removed	Notes	TPH-Gasoline	Benzene	Toluene	Ethyl-Benzene	Xylene	MTBE	Oil & Grease
MW-8														
04/26/85	10.46	--	--	--	--	--	--	--	ND	--	--	--	--	--
09/11/87	10.46	--	--	--	--	--	--	--	<10	--	--	--	--	--
07/07/88	10.46	--	--	--	--	--	--	20,000	<5.0	--	--	--	--	--
04/13/89	10.46	7.66	2.80	--	--	--	--	--	--	--	--	--	--	--
04/14/89	10.46	--	--	--	--	--	+	<50	<0.5	<1.0	<1.0	<1.0	<3000	<3,000,000
07/31/89	10.46	4.76	5.70	--	--	--	+	<50	<0.1	<0.5	<0.1	<0.2	--	--
12/08/89	10.46	6.33	4.13	--	--	--	+	--	<0.3	<0.3	<0.3	<0.6	--	--
03/21/90	10.46	6.39	4.07	--	--	--	+	<50	<0.3	<0.3	<0.3	<0.6	--	--
06/19/90	10.46	6.21	4.25	--	--	--	+	<50	<0.3	<0.3	<0.3	<0.6	--	--
09/20/90	10.46	5.47	4.99	--	--	--	+	--	--	--	--	--	--	--
09/21/90	10.46	--	--	--	--	--	+	<50	6.0	<0.3	<0.3	<0.6	--	--
12/28/90	10.46	6.07	4.39	--	--	--	+	<50	<0.5	<0.5	<0.5	<0.5	--	--
05/10/91	10.46	6.33	4.13	--	--	--	+	<50	<0.5	<0.5	<0.5	<0.5	--	--
08/08/91	10.46	4.93	5.53	--	--	--	+	<50	<0.5	<0.5	<0.5	<0.5	--	--
11/27/91	10.46	5.87	4.59	--	--	--	+	<50	<0.5	<0.5	<0.5	<0.5	--	--
01/29/92	10.46	5.16	5.30	--	--	--	+	<50	<0.5	<0.5	<0.5	<0.5	--	--
03/26/92	10.46	6.87	3.59	--	--	--	+	<50	<0.5	<0.5	<0.5	0.7	--	--
07/23/92	10.46	5.40	5.06	--	--	--	+	<50	<0.5	<0.5	<0.5	<0.5	--	--
10/28/92	10.46	--	--	--	--	--	Inaccessible	--	--	--	--	--	--	--
05/04/93	10.46	--	--	--	--	--	Inaccessible	--	--	--	--	--	--	--
01/05/94	10.46	--	--	--	--	--	Inaccessible	--	--	--	--	--	--	--
05/13/94	10.46	4.87	5.59	--	--	--	+	<50	<0.5	<0.5	<0.5	<0.5	--	--
10/24/94	10.46	--	--	--	--	--	Inaccessible	--	--	--	--	--	--	--
04/19/95	10.46	--	--	--	--	--	*	--	--	--	--	--	--	--
11/06/95	10.46	--	--	--	--	--	Inaccessible	--	--	--	--	--	--	--
04/26/96	10.46	--	--	--	--	--	Inaccessible	--	--	--	--	--	--	--
10/10/96	10.46	--	--	--	--	--	Inaccessible	--	--	--	--	--	--	--
04/22/97	10.46	4.67	5.79	--	--	--	+	<50	<0.5	<0.5	<0.5	<0.5	<5.0	--
10/16/97	10.46	5.14	5.32	--	--	--	+	<50	<0.5	<0.5	<0.5	<0.5	<5.0	--
05/04/98	10.46	4.91	5.55	--	--	--	+	<50	<0.5	<0.5	<0.5	<0.5	<2.5	--
10/27/98	10.46	4.49	5.97	--	--	--	+	<50	<0.5	<0.5	<0.5	<0.5	<2.5	--
04/15/99	10.46	5.21	5.25	--	--	--	+	<50	<0.5	<0.5	<0.5	<0.5	<5.0	--

+ See Table of Additional Analyses.

* Monitoring well was destroyed during soil excavation in 1989.

Cumulative Table of Well Data and Analytical Results

Vertical Measurements are in feet.

Volumetric Measurements are in gallons.

Analytical results are in parts per billion (ppb)

DATE	Well Head Elev.	Ground Water Elev.	Depth To Water	SPH Thickness	SPH Removed	Total SPH Removed	Notes	TPH-Gasoline	Benzene	Toluene	Ethyl-Benzene	Xylene	MTBE	Oil & Grease	
MW-9															
04/26/85	--	--	--	--	--	--	--	--	--	--	--	--	--	--	--
09/11/87	--	--	--	--	--	--	--	--	--	--	--	--	--	--	--
07/07/88	--	--	--	--	--	--	--	400	--	--	--	--	--	--	--
05/10/91	--	--	--	--	--	--	Unable to locate	--	--	--	--	--	--	--	--

NO LONGER MONITORED OR SAMPLED

Cumulative Table of Well Data and Analytical Results

Vertical Measurements are in feet.

Volumetric Measurements are in gallons.

Analytical results are in parts per billion (ppb)

DATE	Well Head Elev.	Ground Water Elev.	Depth To Water	SPH Thickness	SPH Removed	Total SPH Removed	Notes	TPH-Gasoline	Benzene	Toluene	Ethyl-Benzene	Xylene	MTBE	Oil & Grease
MW-10														
07/07/88	10.82	--	--	--	--	--	--	--	<5.0	--	--	--	--	--
04/14/89	10.82	--	--	--	--	--	+	<50	<0.5	<1.0	<1.0	<1.0	--	<3,000,000
07/31/89	10.82	--	--	--	--	--	+	<50	<0.1	<0.5	<0.1	<0.2	--	--
12/08/89	10.82	--	--	--	--	--	+	--	<0.3	<0.3	<0.3	<0.6	--	--
03/21/90	10.82	6.22	4.60	--	--	--	+	<50	<0.3	<0.3	<0.3	<0.6	--	--
06/19/90	10.82	5.93	4.89	--	--	--	+	<50	<0.3	<0.3	<0.3	<0.6	--	--
09/20/90	10.82	5.05	5.77	--	--	--	+	--	--	--	--	--	--	--
09/21/90	10.82	--	--	--	--	--	+	<50	<0.3	<0.3	<0.3	<0.6	--	--
12/28/90	10.82	5.83	4.99	--	--	--	+	<50	<0.5	<0.5	<0.5	<0.5	--	--
05/10/91	10.82	5.02	5.80	--	--	--	+	<50	<0.5	<0.5	<0.5	<0.5	--	--
08/08/91	10.82	4.96	5.86	--	--	--	+	<50	<0.5	<0.5	<0.5	<0.5	--	--
11/27/91	10.82	5.43	5.39	--	--	--	+	<50	<0.5	<0.5	<0.5	<0.5	--	--
01/29/92	10.82	5.38	5.44	--	--	--	+	<50	<0.5	<0.5	<0.5	<0.5	--	--
03/26/92	10.82	5.86	4.96	--	--	--	+	<50	<0.5	<0.5	<0.5	<0.5	--	--
07/23/92	10.82	5.02	5.80	--	--	--	+	<50	<0.5	1.8	0.5	1.9	--	--
10/28/92	10.82	4.76	6.06	--	--	--	+	<50	0.6	0.7	<0.5	1.2	--	--
05/04/93	10.82	--	--	--	--	--	Inaccessible	--	--	--	--	--	--	--
01/05/94	10.82	4.90	5.92	--	--	--	+	<50	<0.5	<0.5	<0.5	0.6	--	--
05/13/94	10.82	5.73	5.09	--	--	--	+	140	<0.5	<0.5	<0.5	1.3	--	--
10/24/94	10.82	4.58	6.24	--	--	--	+	<50	<0.5	<0.5	<0.5	<0.5	--	--
04/19/95	10.82	5.56	5.26	--	--	--	+	<50	<0.5	<0.5	<0.5	<0.5	--	--
11/06/95	10.82	4.57	6.25	--	--	--	+	<50	<0.5	<0.5	<0.5	<0.5	<5.0	--
04/26/96	10.82	--	--	--	--	--	Inaccessible	--	--	--	--	--	--	--
10/10/96	10.82	4.72	6.10	--	--	--	+	<50	<0.5	<0.5	<0.5	0.6	34	--
10/10/96	10.82	4.72	6.10	--	--	--	EPA 8240	--	--	--	--	--	<5.0	--
04/22/97	10.82	5.32	5.50	--	--	--	+	<50	<0.5	<0.5	<0.5	<0.5	<5.0	--
10/16/97	10.82	5.74	5.08	--	--	--	+	<50	<0.5	<0.5	<0.5	<0.5	34	--
05/04/98	10.82	5.81	5.01	--	--	--	+	<50	<0.5	<0.5	<0.5	<0.5	*	--
10/27/98	10.82	5.30	5.52	--	--	--	+	<50	<0.5	<0.5	<0.5	<0.5	<2.5	--
04/15/99	10.82	6.27	4.55	--	--	--	+	<50	<0.5	<0.5	<0.5	<0.5	9.45	--

+ See Table of Additional Analyses.

* Sample has ave chlorinated hydrocarbon pattern, needs GCMS confirmation of MTBE.

Cumulative Table of Well Data and Analytical Results

Vertical Measurements are in feet.

Volumetric Measurements are in gallons.

Analytical results are in parts per billion (ppb)

DATE	Well Head Elev.	Ground Water Elev.	Depth To Water	SPH Thickness	SPH Removed	Total SPH Removed	Notes	TPH-Gasoline	Benzene	Toluene	Ethyl-Benzene	Xylene	MTBE	Oil & Grease
MW-11														
07/07/88	11.38	--	--	--	--	--	--	--	<5.0	--	--	--	--	--
04/14/89	11.38	--	--	--	--	--	+	<50	<0.5	<1.0	<1.0	<1.0	<3000	--
07/31/89	11.38	--	--	--	--	--	+	<100	<0.2	<0.2	<0.2	<0.2	--	--
12/08/89	11.38	--	--	--	--	--	+	--	<0.3	<0.3	<0.3	<0.6	--	--
03/21/90	11.38	6.56	4.82	--	--	--	+	<50	<0.3	<0.3	<0.3	<0.6	--	--
06/19/90	11.38	6.24	5.14	--	--	--	+	<50	<0.3	<0.3	<0.3	<0.6	--	--
09/20/90	11.38	5.27	6.11	--	--	--	+	--	--	--	--	--	--	--
09/21/90	11.38	--	--	--	--	--	+	<50	<0.3	<0.3	<0.3	<0.6	--	--
12/28/90	11.38	6.22	5.16	--	--	--	+	<50	<0.5	<0.5	<0.5	<0.5	--	--
05/10/91	11.38	3.55	7.83	--	--	--	+	<50	<0.5	<0.5	<0.5	<0.5	--	--
08/08/91	11.38	5.06	6.32	--	--	--	+	<50	<0.5	<0.5	<0.5	<0.5	--	--
11/27/91	11.38	5.71	5.67	--	--	--	+	<50	<0.5	<0.5	<0.5	<0.5	--	--
01/29/92	11.38	5.55	5.83	--	--	--	+	<50	<0.5	<0.5	<0.5	<0.5	--	--
03/26/92	11.38	7.29	4.09	--	--	--	+	<50	<0.5	<0.5	<0.5	<0.5	--	--
07/23/92	11.38	5.19	6.19	--	--	--	+	<50	<0.5	<0.5	<0.5	<0.5	--	--
10/28/92	11.38	4.87	6.51	--	--	--	+	<50	<0.5	<0.5	<0.5	<0.5	--	--
05/04/93	11.38	--	--	--	--	--	Inaccessible	--	--	--	--	--	--	--
01/05/94	11.38	--	--	--	--	--	Inaccessible	--	--	--	--	--	--	--
05/13/94	11.38	5.71	5.67	--	--	--	+	<50	<0.5	<0.5	<0.5	<0.5	--	--
10/24/94	11.38	4.59	6.79	--	--	--	+	<50	<0.5	<0.5	<0.5	<0.5	--	--
04/19/95	11.38	5.69	5.69	--	--	--	+	58*	0.6	<0.5	<0.5	0.5	--	--
11/06/95	11.38	--	--	--	--	--	Inaccessible	--	--	--	--	--	--	--
04/26/96	11.38	--	--	--	--	--	Inaccessible	--	--	--	--	--	--	--
10/10/96	11.38	--	--	--	--	--	Inaccessible	--	--	--	--	--	--	--
04/22/97	11.38	5.44	5.94	--	--	--	+	<50	<0.5	<0.5	<0.5	<0.5	<5.0	--
10/16/97	11.38	5.90	5.48	--	--	--	+	<50	<0.5	<0.5	<0.5	<0.5	18	--
05/04/98	11.38	5.86	5.52	--	--	--	+	<50	<0.5	<0.5	<0.5	<0.5	**	--
10/27/98	11.38	5.23	6.15	--	--	--	+	<50	<0.5	<0.5	<0.5	<0.5	12	--
10/27/98	11.38	5.23	6.15	--	--	--	Confirmation run	--	--	--	--	--	<2.0	--
04/15/99	11.38	6.38	5.00	--	--	--	+	<50	<0.5	<0.5	<0.5	<0.5	<5.0	--

+ See Table of Additional Analyses.

* Chromatogram report indicates an unidentified hydrocarbon.

** Sample has ave chlorinated hydrocarbon pattern, needs GCMS confirmation of MTBE.

Cumulative Table of Well Data and Analytical Results

Vertical Measurements are in feet.

Volumetric Measurements are in gallons.

Analytical results are in parts per billion (ppb)

DATE	Well Head Elev.	Ground Water Elev.	Depth To Water	SPH Thickness	SPH Removed	Total SPH Removed	Notes	TPH-Gasoline	Benzene	Toluene	Ethyl-Benzene	Xylene	MTBE	Oil & Grease
MW-12														
07/07/88	13.03	--	--	--	--	--	--	<100	<5.0	--	--	--	--	--
04/14/89	13.03	--	--	--	--	--	+	<50	<0.5	<1.0	<1.0	<1.0	--	<3,000,000
07/31/89	13.03	--	--	--	--	--	+	<100	<0.1	<0.5	<0.1	<0.2	--	--
12/08/89	13.03	--	--	--	--	--	+	--	<0.3	<0.3	<0.3	<0.6	--	--
03/21/90	13.03	6.27	6.76	--	--	--	+	<50	<0.3	<0.3	<0.3	<0.3	--	--
06/19/90	13.03	6.41	6.62	--	--	--	+	<50	<0.3	<0.3	<0.3	<0.3	--	--
09/20/90	13.03	8.03	5.00	--	--	--	+	--	--	--	--	--	--	--
09/21/90	13.03	--	--	--	--	--	+	<50	<0.3	<0.3	<0.3	<0.3	--	--
12/28/90	13.03	6.41	6.62	--	--	--	+	<50	<0.5	<0.5	<0.5	<0.5	--	--
05/10/91	13.03	6.55	6.48	--	--	--	+	<50	<0.5	<0.5	<0.5	<0.5	--	--
08/08/91	13.03	5.02	8.01	--	--	--	+	<50	<0.5	<0.5	<0.5	<0.5	--	--
11/27/91	13.03	5.08	7.95	--	--	--	+	<50	<0.5	<0.5	<0.5	<0.5	--	--
01/29/92	13.03	5.35	7.68	--	--	--	+	<50	<0.5	<0.5	<0.5	1.0	--	--
03/26/92	13.03	6.43	6.60	--	--	--	+	<50	<0.5	<0.5	<0.5	<0.5	--	--
07/23/92	13.03	--	--	--	--	--	Unable to locate	--	--	--	--	--	--	--

NO LONGER MONITORED OR SAMPLED

+ See Table of Additional Analyses.

Cumulative Table of Well Data and Analytical Results

Vertical Measurements are in feet.				Volumetric Measurements are in gallons.				Analytical results are in parts per billion (ppb)						
DATE	Well Head Elev.	Ground Water Elev.	Depth To Water	SPH Thickness	SPH Removed	Total SPH Removed	Notes	TPH-Gasoline	Benzene	Toluene	Ethyl-Benzene	Xylene	MTBE	Oil & Grease
MW-13														
03/21/90	11.15	7.07	4.08	--	--	--	+	480	<0.3	<0.3	1.0	5.0	--	--
06/19/90	11.15	6.81	4.34	--	--	--	+	180	<0.3	<0.3	0.8	3.0	--	--
09/20/90	11.15	5.84	5.31	--	--	--	+	150	<0.3	<0.3	<0.3	0.54	--	--
12/28/90	11.15	6.36	4.79	--	--	--	+	160	<0.5	<0.5	<0.5	1.0	--	--
05/10/91	11.15	6.95	4.20	--	--	--	+	110	<0.5	<0.5	<0.5	2.0	--	--
08/08/91	11.15	6.02	5.13	--	--	--	+	220*	<0.5	<0.5	<0.5	1.8	--	--
11/27/91	11.15	6.43	4.72	--	--	--	+	70	<0.5	<0.5	<0.5	1.2	--	--
01/29/92	11.15	6.46	4.69	--	--	--	+	150	<0.5	<0.5	3.1	7.1	--	--
03/26/92	11.15	7.11	4.04	--	--	--	+	<50	<0.5	<0.5	<0.5	<0.5	--	--
07/23/92	11.15	6.03	5.12	--	--	--	+	190	<0.5	<0.5	<0.5	2.1	--	--
10/28/92	11.15	5.85	5.30	--	--	--	+	190	<0.5	<0.5	<0.5	2.0	--	--
05/04/93	11.15	--	--	--	--	--	Inaccessible	--	--	--	--	--	--	--
01/05/94	11.15	--	--	--	--	--	Inaccessible	--	--	--	--	--	--	--
05/13/94	11.15	5.87	5.28	--	--	--	+	220	<0.5	1.2	<0.5	1.7	--	--
10/24/94	11.15	5.11	6.04	--	--	--	+	<50	<0.5	<0.5	<0.5	<0.5	--	--
04/19/95	11.15	5.78	5.37	--	--	--	+	140**	<0.5	<0.5	<0.5	1.2	--	--
11/06/95	11.15	5.02	6.13	--	--	--	+	<50	<0.5	<0.5	<0.5	<0.5	<5.0	--
04/26/96	11.15	5.93	5.22	--	--	--	+	<50	<0.5	<0.5	<0.5	<0.5	<5.0	--
10/10/96	11.15	--	--	--	--	--	Inaccessible	--	--	--	--	--	--	--
04/22/97	11.15	5.69	5.46	--	--	--	+	<50	<0.5	<0.5	<0.5	<0.5	<5.0	--
10/16/97	11.15	5.98	5.17	--	--	--	+	<50	<0.5	<0.5	<0.5	<0.5	<5.0	--
05/04/98	11.15	5.94	5.21	--	--	--	+	<50	<0.5	<0.5	<0.5	<0.5	<2.5	--
10/27/98	11.15	5.44	5.71	--	--	--	+	<50	<0.5	<0.5	<0.5	<0.5	<2.5	--
04/15/99	11.15	--	--	--	--	--	Inaccessible	--	--	--	--	--	--	--

+ See Table of Additional Analyses.

* Monitoring well was destroyed during soil excavation in 1989.

** Chromatogram report indicates an unidentified hydrocarbon.

Cumulative Table of Well Data and Analytical Results

Vertical Measurements are in feet.			Volumetric Measurements are in gallons.				Analytical results are in parts per billion (ppb)							
DATE	Well Head Elev.	Ground Water Elev.	Depth To Water	SPH Thickness	SPH Removed	Total SPH Removed	Notes	TPH- Gasoline	Benzene	Toluene	Ethyl- Benzene	Xylene	MTBE	Oil & Grease
MW-14														
03/21/90	9.78	8.87	0.91	--	--	--	+	170	<0.3	<0.3	<0.4	2.0	--	--
06/19/90	9.78	8.75	1.03	--	--	--	+	77	<0.3	<0.3	<0.3	<0.6	--	--
09/20/90	9.78	7.25	2.53	--	--	--	+	<50	<0.3	<0.3	<0.3	<0.6	--	--
12/28/90	9.78	8.17	1.61	--	--	--	+	<50	<0.5	<0.5	<0.5	<0.5	--	--
05/10/91	9.78	8.56	1.22	--	--	--	+	<50	<0.5	<0.5	<0.5	<0.5	--	--
08/08/91	9.78	7.33	2.45	--	--	--	+	<50	<0.5	<0.5	<0.5	<0.5	--	--
11/27/91	9.78	7.19	2.59	--	--	--	+	<50	<0.5	<0.5	<0.5	<0.5	--	--
01/29/92	9.78	8.68	1.10	--	--	--	+	<50	<0.5	<0.5	<0.5	<0.5	--	--
03/26/92	9.78	9.04	0.74	--	--	--	+	<50	<0.5	<0.5	<0.5	<0.5	--	--
07/23/92	9.78	7.48	2.30	--	--	--	+	<50	0.6	<0.5	<0.5	0.8	--	--
10/28/92	9.78	7.02	2.76	--	--	--	+	56	0.7	4.0	0.8	3.8	--	--
05/04/93	9.78	--	--	--	--	--	Well abandoned	--	--	--	--	--	--	--

+ See Table of Additional Analyses.

Cumulative Table of Well Data and Analytical Results

Vertical Measurements are in feet.

Volumetric Measurements are in gallons.

Analytical results are in parts per billion (ppb)

DATE	Well Head Elev.	Ground Water Elev.	Depth To Water	SPH Thickness	SPH Removed	Total SPH Removed	Notes	TPH-Gasoline	Benzene	Toluene	Ethyl-Benzene	Xylene	MTBE	Oil & Grease	
MW-15															
03/21/90	11.01	6.29	4.72	--	--	--	+	<50	<0.3	<0.3	<0.3	<0.6	--	--	
06/19/90	11.01	6.23	4.78	--	--	--	+	<50	<0.3	<0.3	<0.3	<0.6	--	--	
09/20/90	11.01	6.03	4.98	--	--	--	+	<50	<0.3	<0.3	<0.3	<0.6	--	--	
12/28/90	11.01	6.17	4.84	--	--	--	+	<50	<0.5	<0.5	<0.5	<0.5	--	--	
05/10/91	11.01	6.43	4.58	--	--	--	+	<50	<0.5	<0.5	<0.5	<0.5	--	--	
08/08/91	11.01	5.98	5.03	--	--	--	+	<50	<0.5	<0.5	<0.5	<0.5	--	--	
11/27/91	11.01	5.13	5.88	--	--	--	+	<50	<0.5	<0.5	<0.5	<0.5	--	--	
01/29/92	11.01	6.19	4.82	--	--	--	+	<50	1.9	2.6	0.8	2.6	--	--	
03/26/92	11.01	6.66	4.35	--	--	--	+	<50	<0.5	<0.5	<0.5	<0.5	--	--	
07/23/92	11.01	5.97	5.04	--	--	--	+	<50	<0.5	<0.5	<0.5	0.5	--	--	
10/28/92	11.01	5.84	5.17	--	--	--	+	<50	<0.5	<0.5	<0.5	<0.5	--	--	
05/04/93	11.01	--	--	--	--	--	Inaccessible	--	--	--	--	--	--	--	
01/05/94	11.01	--	--	--	--	--	Inaccessible	--	--	--	--	--	--	--	
05/13/94	11.01	6.51	4.50	--	--	--	+	110	<0.5	0.7	<0.5	2.0	--	--	
10/24/94	11.01	5.84	5.17	--	--	--	+	<50	2.3	1.1	<0.5	<0.5	--	--	
04/19/95	11.01	6.24	4.77	--	--	--	+	<50	<0.5	<0.5	<0.5	<0.5	--	--	
11/06/95	11.01	5.73	5.28	--	--	--	+	<50	<0.5	<0.5	<0.5	<0.5	<5.0	--	
04/26/96	11.01	6.41	4.60	--	--	--	+	<50	<0.5	<0.5	<0.5	<0.5	<5.0	--	
10/10/96	11.01	5.79	5.22	--	--	--	+	<50	<0.5	<0.5	<0.5	<0.5	<5.0	--	
04/22/97	11.01	6.16	4.85	--	--	--	+	<50	<0.5	<0.5	<0.5	<0.5	<5.0	--	
10/16/97	11.01	6.19	4.82	--	--	--	+	<50	<0.5	<0.5	<0.5	<0.5	<5.0	--	
05/04/98	11.01	7.02	3.99	--	--	--	+	<50	<0.5	<0.5	<0.5	<0.5	<2.5	--	
10/27/98	11.01	--	--	--	--	--	Inaccessible	--	--	--	--	--	--	--	
04/15/99	11.01	5.26	5.75	--	--	--	--	--	--	--	--	--	--	--	

+ See Table of Additional Analyses.

Cumulative Table of Well Data and Analytical Results

Vertical Measurements are in feet.

Volumetric Measurements are in gallons.

Analytical results are in parts per billion (ppb)

DATE	Well Head Elev.	Ground Water Elev.	Depth To Water	SPH Thickness	SPH Removed	Total SPH Removed	Notes	TPH-Gasoline	Benzene	Toluene	Ethyl-Benzene	Xylene	MTBE	Oil & Grease	
MW-16															
03/21/90	11.11	5.27	5.84	--	--	--	+	<50	<0.3	<0.3	<0.3	<0.6	--	--	
06/19/90	11.11	5.21	5.90	--	--	--	+	<50	<0.3	<0.3	<0.3	<0.6	--	--	
09/20/90	11.11	4.75	6.36	--	--	--	+	<50	<0.3	<0.3	<0.3	<0.6	--	--	
12/28/90	11.11	5.13	5.98	--	--	--	+	<50	<0.5	<0.5	<0.5	<0.5	--	--	
05/10/91	11.11	5.22	5.89	--	--	--	+	<50	<0.5	<0.5	<0.5	<0.5	--	--	
08/08/91	11.11	4.83	6.28	--	--	--	+	<50	<0.5	<0.5	<0.5	<0.5	--	--	
11/27/91	11.11	5.49	5.62	--	--	--	+	<50	<0.5	<0.5	<0.5	<0.5	--	--	
01/29/92	11.11	5.23	5.88	--	--	--	+	65	3.6	6.2	1.9	6.6	--	--	
03/26/92	11.11	5.55	5.56	--	--	--	+	270	21	27	9.5	41	--	--	
07/23/92	11.11	4.82	6.29	--	--	--	+	<50	<0.5	<0.5	<0.5	0.7	--	--	
10/28/92	11.11	4.82	6.29	--	--	--	+	<50	0.9	1.4	<0.5	1.1	--	--	
05/04/93	11.11	5.36	5.75	--	--	--	+	51	<0.5	1.0	0.6	1.7	--	--	
01/05/94	11.11	--	--	--	--	--	Inaccessible	--	--	--	--	--	--	--	

NO LONGER MONITORED OR SAMPLED

+ See Table of Additional Analyses.

Cumulative Table of Well Data and Analytical Results

Vertical Measurements are in feet.

Volumetric Measurements are in gallons.

Analytical results are in parts per billion (ppb)

DATE	Well Head Elev.	Ground Water Elev.	Depth To Water	SPH Thickness	SPH Removed	Total SPH Removed	Notes	TPH-Gasoline	Benzene	Toluene	Ethyl-Benzene	Xylene	MTBE	Oil & Grease	
MW-17															
03/21/90	10.41	4.80	5.61	--	--	--	+	<50	<0.3	<0.3	<0.3	<0.6	--	--	
06/19/90	10.41	--	--	--	--	--	+	<50	<0.3	<0.3	<0.3	<0.6	--	--	
09/20/90	10.41	4.39	6.02	--	--	--	+	<50	<0.3	<0.3	<0.3	<0.6	--	--	
12/28/90	10.41	4.68	5.73	--	--	--	+	<50	<0.5	<0.5	<0.5	<0.5	--	--	
05/10/91	10.41	4.76	5.65	--	--	--	+	<50	<0.5	<0.5	<0.5	0.8	--	--	
08/08/91	10.41	4.47	5.94	--	--	--	+	82	1.9	2.5	0.9	5.4	--	--	
11/27/91	10.41	4.41	6.00	--	--	--	+	<50	<0.5	<0.5	<0.5	<0.5	--	--	
01/29/92	10.41	4.80	5.61	--	--	--	+	<50	<0.5	0.9	<0.5	0.5	--	--	
03/26/92	10.41	5.10	5.31	--	--	--	+	<50	<0.5	<0.5	<0.5	<0.5	--	--	
07/23/92	10.41	4.44	5.97	--	--	--	+	<50	<0.5	<0.5	<0.5	<0.5	--	--	
10/28/92	10.41	4.45	5.96	--	--	--	+	78	1.0	7.1	1.4	6.5	--	--	
05/04/93	10.41	2.88	7.53	--	--	--	+	60	0.8	1.7	1.1	3.0	--	--	
01/05/94	10.41	4.91	5.50	--	--	--	+	<50	<0.5	0.7	<0.5	<0.5	--	--	
05/13/94	10.41	5.24	5.17	--	--	--	+	<50	<0.5	<0.5	<0.5	<0.5	--	--	
10/24/94	10.41	4.33	6.08	--	--	--	+	<50	<0.5	<0.5	<0.5	<0.5	--	--	
04/19/95	10.41	4.93	5.48	--	--	--	+	<50	<0.5	<0.5	<0.5	<0.5	--	--	
11/06/95	10.41	4.41	6.00	--	--	--	+	<50	<0.5	<0.5	<0.5	<5.0	--	--	
04/26/96	10.41	4.96	5.45	--	--	--	+	<50	<0.5	<0.5	<0.5	<5.0	--	--	
10/10/96	10.41	4.69	5.72	--	--	--	+	<50	<0.5	<0.5	<0.5	<0.5	<5.0	--	
04/22/97	10.41	5.03	5.38	--	--	--	+	<50	<0.5	<0.5	<0.5	<0.5	<5.0	--	
10/16/97	10.41	5.05	5.36	--	--	--	+	<50	<0.5	<0.5	<0.5	<0.5	<5.0	--	
05/04/98	10.41	5.13	5.28	--	--	--	+	<50	<0.5	<0.5	<0.5	<0.5	<2.5	--	
10/27/98	10.41	--	--	--	--	--	Inaccessible	--	--	--	--	--	--	--	
04/15/99	10.41	--	--	--	--	--	Inaccessible	--	--	--	--	--	--	--	

+ See Table of Additional Analyses.

Cumulative Table of Well Data and Analytical Results

Vertical Measurements are in feet.

Volumetric Measurements are in gallons.

Analytical results are in parts per billion (ppb)

DATE	Well Head Elev.	Ground Water Elev.	Depth To Water	SPH Thickness	SPH Removed	Total SPH Removed	Notes	TPH-Gasoline	Benzene	Toluene	Ethyl-Benzene	Xylene	MTBE	Oil & Grease	
MW-18															
03/21/90	9.80	4.65	5.15	--	--	--	+	<50	<0.3	<0.3	<0.3	<0.6	--	--	
06/19/90	9.80	4.61	5.19	--	--	--	+	<50	<0.3	<0.3	<0.3	<0.6	--	--	
09/20/90	9.80	4.26	5.54	--	--	--	+	<50	<0.3	<0.3	<0.3	<0.6	--	--	
12/28/90	9.80	4.54	5.26	--	--	--	+	<50	<0.5	<0.5	<0.5	<0.5	--	--	
05/10/91	9.80	4.62	5.18	--	--	--	+	<50	<0.5	<0.5	<0.5	<0.5	--	--	
08/08/91	9.80	4.35	5.45	--	--	--	+	52	<0.5	<0.5	<0.5	<0.5	--	--	
11/27/91	9.80	4.56	5.24	--	--	--	+	<50	0.6	1.5	0.6	2.1	--	--	
01/29/92	9.80	4.68	5.12	--	--	--	+	67	3.7	5.2	1.5	5.0	--	--	
03/26/92	9.80	4.96	4.84	--	--	--	+	80	<0.5	<0.5	<0.5	0.8	--	--	
07/23/92	9.80	4.31	5.49	--	--	--	+	50	1.3	2.1	0.5	3.0	--	--	
10/28/92	9.80	4.33	5.47	--	--	--	+	54	<0.5	1.3	<0.5	1.1	--	--	
05/04/93	9.80	4.73	5.07	--	--	--	+	<50	<0.5	<0.5	<0.5	<1.5	--	--	
01/05/94	9.80	4.75	5.05	--	--	--	+	<50	<0.5	0.5	<0.5	0.6	--	--	
05/13/94	9.80	5.04	4.76	--	--	--	+	<50	<0.5	<0.5	<0.5	<0.5	--	--	
10/24/94	9.80	4.15	5.65	--	--	--	+	<50	<0.5	<0.5	<0.5	<0.5	--	--	
04/19/95	9.80	4.70	5.10	--	--	--	+	<50	<0.5	<0.5	<0.5	<0.5	--	--	
11/06/95	9.80	4.23	5.57	--	--	--	+	<50	<0.5	<0.5	<0.5	<0.5	<5.0	--	
04/26/96	9.80	4.73	5.07	--	--	--	+	<50	<0.5	<0.5	<0.5	<0.5	<5.0	--	
10/10/96	9.80	--	--	--	--	--	Inaccessible	--	--	--	--	--	--	--	
04/22/97	9.80	4.77	5.03	--	--	--	+	<50	<0.5	<0.5	<0.5	<0.5	<5.0	--	
10/16/97	9.80	3.82	5.98	--	--	--	+	<50	<0.5	<0.5	<0.5	<0.5	<5.0	--	
05/04/98	9.80	4.89	4.91	--	--	--	+	<50	<0.5	<0.5	<0.5	<0.5	<0.5	*	
10/27/98	9.80	4.70	5.10	--	--	--	+	<50	<0.5	<0.5	<0.5	<0.5	<2.5	--	
04/15/99	9.80	5.05	4.75	--	--	--	+	<50	<0.5	<0.5	<0.5	<0.5	<5.0	--	

+ See Table of Additional Analyses.

* Sample has ave chlorinated hydrocarbon pattern, needs GCMS confirmation of MTBE.

Cumulative Table of Well Data and Analytical Results

Vertical Measurements are in feet.

Volumetric Measurements are in gallons.

Analytical results are in parts per billion (ppb)

DATE	Well Head Elev.	Ground Water Elev.	Depth To Water	SPH Thickness	SPH Removed	Total SPH Removed	Notes	TPH-Gasoline	Benzene	Toluene	Ethyl-Benzene	Xylene	MTBE	Oil & Grease	
MW-19															
03/21/90	8.45	3.45	5.00	--	--	--	+	<50	<0.3	<0.3	<0.3	<0.6	--	--	
06/19/90	8.45	3.39	5.06	--	--	--	+	<50	<0.3	<0.3	<0.3	<0.6	--	--	
09/20/90	8.45	3.20	5.25	--	--	--	+	<50	<0.3	<0.3	<0.3	<0.6	--	--	
12/28/90	8.45	3.38	5.07	--	--	--	+	66	<0.5	<0.5	<0.5	<0.5	--	--	
05/10/91	8.45	3.43	5.02	--	--	--	+	60*	<0.5	<0.5	<0.5	<0.5	--	--	
08/08/91	8.45	3.28	5.17	--	--	--	+	58	<0.5	<0.5	<0.5	<0.5	--	--	
11/27/91	8.45	3.39	5.06	--	--	--	+	<50	<0.5	<0.5	<0.5	<0.5	--	--	
01/29/92	8.45	3.52	4.93	--	--	--	+	<50	1.7	2.6	0.7	2.1	--	--	
03/26/92	8.45	3.66	4.79	--	--	--	+	80	<0.5	<0.5	<0.5	<0.5	--	--	
07/23/92	8.45	3.23	5.22	--	--	--	+	70	0.6	0.5	<0.5	1.5	--	--	
10/28/92	8.45	3.29	5.16	--	--	--	+	170	4.3	28	5.1	24	--	--	
05/04/93	8.45	3.52	4.93	--	--	--	+	120	2.0	4.7	2.8	8.1	--	--	
01/05/94	8.45	3.54	4.91	--	--	--	+	<50	2.0	1.4	1.7	2.5	--	--	
05/13/94	8.45	4.27	4.18	--	--	--	+	<50	<0.5	0.9	<0.5	<0.5	--	--	
10/24/94	8.45	3.60	4.85	--	--	--	+	<50	<0.5	<0.5	<0.5	<0.5	--	--	
04/19/95	8.45	4.25	4.20	--	--	--	+	270**	<0.5	<0.5	<0.5	<0.5	--	--	
11/06/95	8.45	--	--	--	--	--	Abandoned	--	--	--	--	--	--	--	
MW-19A															
11/06/95	9.96	5.11	4.85	--	--	--	+	420	<0.5	<0.5	<0.5	<0.5	<5.0	--	
04/26/96	9.96	5.78	4.18	--	--	--	+	<50	<0.5	<0.5	<0.5	<0.5	<5.0	--	
10/10/96	9.96	5.40	4.56	--	--	--	+	610**	<0.5	<0.5	<0.5	<0.5	21	--	
04/22/97	9.96	5.79	4.17	--	--	--	+	430**	<0.5	<0.5	<0.5	<0.5	<5.0	--	
10/16/97	9.96	5.83	4.13	--	--	--	+	380	<0.5	<0.5	<0.5	<0.5	22	--	
05/04/98	9.96	5.93	4.03	--	--	--	+	200**	<0.5	<0.5	<0.5	<0.5	--	--	
05/04/98	9.96	5.93	4.03	--	--	--	+	--	--	--	--	--	<2.0	--	
10/27/98	9.96	5.75	4.21	--	--	--	+	170**	<0.5	<0.5	<0.5	<0.5	12	--	
10/27/98	9.96	5.75	4.21	--	--	--	Confirmation run	--	--	--	--	--	<2.0	--	
04/15/99	9.96	--	--	--	--	--	Inaccessible	--	--	--	--	--	--	--	

+ See Table of Additional Analyses.

* Monitoring well was destroyed during soil excavation in 1989.

** Chromatogram pattern indicates an unidentified hydrocarbon.

Cumulative Table of Well Data and Analytical Results

Vertical Measurements are in feet.

Volumetric Measurements are in gallons.

Analytical results are in parts per billion (ppb)

DATE	Well Head Elev.	Ground Water Elev.	Depth To Water	SPH Thickness	SPH Removed	Total SPH Removed	Notes	TPH-Gasoline	Benzene	Toluene	Ethyl-Benzene	Xylene	MTBE	Oil & Grease	
TRIP BLANK															
04/14/89	--	--	--	--	--	--	+	<50	<0.5	<1.0	<1.0	<1.0	--	--	
07/31/89	AA	--	--	--	--	--	+	<50	<0.1	<0.5	<0.5	<0.2	--	--	
12/08/89	--	--	--	--	--	--	+	--	<0.3	<0.3	<0.3	<0.6	--	--	
03/21/90	--	--	--	--	--	--	+	<50	<0.3	<0.3	<0.3	<0.6	--	--	
03/26/90	--	--	--	--	--	--	+	<50	<0.3	<0.3	<0.3	<0.6	--	--	
06/19/90	--	--	--	--	--	--	+	<50	<0.3	<0.3	<0.3	<0.6	--	--	
09/21/90	--	--	--	--	--	--	+	<50	<0.3	<0.3	<0.3	<0.6	--	--	
12/28/90	--	--	--	--	--	--	+	<50	<0.5	<0.5	<0.5	<0.6	--	--	
05/10/91	--	--	--	--	--	--	+	<50	<0.5	<0.5	<0.5	<0.5	--	--	
08/08/91	--	--	--	--	--	--	+	<50	<0.5	<0.5	<0.5	<0.5	--	--	
11/27/91	--	--	--	--	--	--	+	<50	<0.5	<0.5	<0.5	<0.5	--	--	
01/29/92	--	--	--	--	--	--	+	<50	<0.5	<0.5	<0.5	<0.5	--	--	
03/26/92	--	--	--	--	--	--	+	<50	<0.5	<0.5	<0.5	<0.5	--	--	
07/23/92	--	--	--	--	--	--	+	<50	<0.5	<0.5	<0.5	<0.5	--	--	
10/28/92	--	--	--	--	--	--	+	<50	<0.5	<0.5	<0.5	<0.5	--	--	
05/04/93	--	--	--	--	--	--	+	<50	<0.5	<0.5	<0.5	<1.5	--	--	
01/05/94	--	--	--	--	--	--	+	<50	<0.5	<0.5	<0.5	<0.5	--	--	
05/13/94	--	--	--	--	--	--	+	<50	<0.5	<0.5	<0.5	<0.5	--	--	
10/24/94	--	--	--	--	--	--	+	<50	<0.5	<0.5	<0.5	<0.5	--	--	
04/19/95	--	--	--	--	--	--	+	<50	<0.5	<0.5	<0.5	<0.5	--	--	
11/06/95	--	--	--	--	--	--	+	<50	<0.5	<0.5	<0.5	<0.5	<5.0	--	
04/26/96	--	--	--	--	--	--	+	<50	<0.5	<0.5	<0.5	<0.5	<5.0	--	
10/10/96	--	--	--	--	--	--	+	<50	<0.5	<0.5	<0.5	<0.5	<5.0	--	
04/22/97	--	--	--	--	--	--	+	<50	<0.5	<0.5	<0.5	<0.5	<5.0	--	
10/16/97	--	--	--	--	--	--	+	<50	<0.5	<0.5	<0.5	<0.5	<5.0	--	
05/04/98	--	--	--	--	--	--	+	<50	<0.5	<0.5	<0.5	<0.5	<2.5	--	
10/27/98	--	--	--	--	--	--	+	<50	<0.5	<0.5	<0.5	<0.5	<2.5	--	
04/15/99	--	--	--	--	--	--	--	<50	<0.5	<0.5	<0.5	<0.5	<5.0	--	

+ See Table of Additional Analyses.

Cumulative Table of Well Data and Analytical Results

Vertical Measurements are in feet.

Volumetric Measurements are in gallons.

Analytical results are in parts per billion (ppb)

DATE	Well Head Elev.	Ground Water Elev.	Depth To Water	SPH Thickness	SPH Removed	Total SPH Removed	Notes	TPH-Gasoline	Benzene	Toluene	Ethyl-Benzene	Xylene	MTBE	Oil & Grease	
BAILER BLANK															
05/10/91	--	--	--	--	--	--	+	<50	<0.5	<0.5	<0.5	<0.5	--	--	
08/08/91	--	--	--	--	--	--	+	<50	<0.5	<0.5	<0.5	<0.5	--	--	
11/27/91	--	--	--	--	--	--	+	<50	<0.5	<0.5	<0.5	<0.5	--	--	
01/29/92	--	--	--	--	--	--	+	<50	<0.5	<0.5	<0.5	<0.5	--	--	
03/26/92	--	--	--	--	--	--	+	<50	<0.5	<0.5	<0.5	<0.5	--	--	
07/23/92	--	--	--	--	--	--	+	<50	<0.5	<0.5	<0.5	<0.5	--	--	
10/28/92	--	--	--	--	--	--	+	<50	<0.5	<0.5	<0.5	<0.5	--	--	
05/04/93	--	--	--	--	--	--	+	<50	<0.5	<0.5	<0.5	<1.5	--	--	
01/05/94	--	--	--	--	--	--	+	<50	<0.5	<0.5	<0.5	<0.5	--	--	
05/13/94	--	--	--	--	--	--	+	<50	<0.5	<0.5	<0.5	<0.5	--	--	

+ See Table of Additional Analyses.

Cumulative Table of Well Data and Analytical Results

ADDITIONAL ANALYSES

Analytical values are in parts per billion (ppb)

Date	Notes	1,1-DCE	1,2-DCE	t-1,2-DCE	c-1,2-DCE	1,1-DCA	1,1,1-TCA	TCE	PCE	CF	VC	Other HVOCs
MW-1												
04/14/89	--	<5.0	--	19	720	<5.0	<5.0	11	<5.0	<20	340	ND*
07/31/89	--	6.8	--	54	2600	2.7	7.2	57	<0.2	<1.0	760	ND**
12/08/89	--	4.3	2700	--	--	1.7	1.4	59	<0.5	<0.5	520	--
03/21/90	--	7.1	7000	--	--	2.1	1.1	130	<0.5	<0.5	1100	--
06/19/90	--	12	6100	--	--	3.1	<0.5	81	<0.5	<0.5	1200	--
09/21/90	--	1.8	2400	--	--	2.2	1.7	60	<0.5	<0.5	1100	ND***
12/28/90	--	2.0	--	28	1500	1.0	0.6	15	<0.5	<0.5	510	ND+
05/10/91	--	10	--	69	5500	2.0	<0.5	280	<0.5	<0.5	1800	ND++
08/08/91	--	2.9	--	45	2300	1.5	<0.5	110	<0.5	<0.5	<1.0	ND+++
11/27/91	--	<25	--	<25	5900	<25	<25	<25	<25	<25	540	<25
01/29/92	--	<25	--	26	1900	<25	<25	<25	<25	<25	320	<25
03/26/92	--	<50	--	<50	1500	<50	<50	<50	<50	<50	260	<50
07/23/92	--	<50	--	<50	2300	<50	<50	<50	<50	<50	170	<50
10/28/92	--	4.2	--	30	1600	3.6	<0.5	16	<0.5	<0.5	810	ND
05/04/93	--	1.0	--	16	670	0.5	<0.5	9.2	<0.5	<0.5	110	<0.5
01/05/94	Inaccessible	--	--	--	--	--	--	--	--	--	--	--
05/13/94	Paved over	--	--	--	--	--	--	--	--	--	--	--

* = 6 ppb 1,2-dichloropropane detected; other HVOCs not detected.

** = 0.6 ppb 1,2-dichloroethane detected; other HVOCs not detected.

*** = 63 ppb chloromethane and 0.6 ppb methylene chloride detected; other HVOCs not detected; sample contained 1,250 ppb total dissolved solids.

+ = 0.9 ppb trans-1,3-dichloropropane detected; other HVOCs not detected; sample contained 810 ppb total dissolved solids.

++ = 0.9 ppb trichlorofluoromethane and 1 ppb trans-1,3-dichloropropane detected; other HVOCs not detected.

+++ = 11 ppb trans-1,3-dichloropropane detected; other HVOCs not detected.

Cumulative Table of Well Data and Analytical Results

ADDITIONAL ANALYSES

Analytical values are in parts per billion (ppb)

Date	Notes	1,1- DCE	1,2- DCE	t-1,2- DCE	c-1,2- DCE	1,1- DCA	1,1,1- TCA	TCE	PCE	CF	VC	Other HVOCs
MW-2												
04/14/89	--	<0.2	<0.2	--	--	<0.2	<0.2	<0.2	<0.2	<1.0	<0.2	--
07/31/89	--	<0.2	<0.2	--	--	<0.4	0.5	<0.2	<0.2	<1.0	<0.2	--
12/08/89	--	<0.2	<0.5	--	--	<0.5	<0.5	<0.5	<0.5	<0.5	<1.0	--
03/21/90	--	<0.2	<0.5	--	--	<0.5	<0.5	<0.5	<0.5	<0.5	<1.0	--
06/19/90	--	<0.2	<0.5	--	--	<0.5	<0.5	<0.5	<0.5	<0.5	<1.0	--
09/21/90	--	<0.2	<0.5	--	--	<0.5	<0.5	<0.5	<0.5	<0.5	<1.0	--
12/28/90	--	<0.5	--	<0.5	<0.5	<0.5	<0.5	<0.5	<0.5	<0.5	<1.0	--
05/10/91	--	<0.5	--	<0.5	<0.5	<0.5	<0.5	<0.5	<0.5	<0.5	<1.0	ND
08/08/91	--	<0.5	--	<0.5	<0.5	<0.5	<0.5	<0.5	<0.5	<0.5	<1.0	ND
11/27/91	--	<0.5	--	<0.5	<0.5	<0.5	<0.5	<0.5	<0.5	<0.5	<1.0	ND
01/29/92	--	<0.5	--	<0.5	<0.5	<0.5	<0.5	<0.5	<0.5	<0.5	<1.0	ND
03/26/92	--	<0.5	--	<0.5	<0.5	<0.5	<0.5	<0.5	<0.5	<0.5	<1.0	ND
07/23/92	--	<0.5	--	<0.5	<0.5	<0.5	<0.5	<0.5	<0.5	<0.5	<0.5	<0.5
10/28/92	--	<0.5	--	<0.5	<0.5	<0.5	<0.5	<0.5	<0.5	<0.5	<1.0	ND
05/04/93	Inaccessible	--	--	--	--	--	--	--	--	--	--	--
01/05/94	Inaccessible	--	--	--	--	--	--	--	--	--	--	--
05/13/94	Inaccessible	--	--	--	--	--	--	--	--	--	--	--
10/24/94	Dry	--	--	--	--	--	--	--	--	--	--	--
11/06/95	Abandoned	--	--	--	--	--	--	--	--	--	--	--
MW-2A												
11/06/95	--	<1.0	--	<1.0	<1.0	<1.0	<1.0	<1.0	<1.0	<1.0	<1.0	ND
04/26/96	--	<0.5	--	<0.5	<0.5	<0.5	<0.5	<0.5	<0.5	<0.5	<0.8	<0.5-<5.0
10/10/96	--	<0.5	--	<0.5	<0.5	<0.5	<0.5	<0.5	<0.5	<0.5	<0.8	ND
04/22/97	--	<2.5	--	<2.5	<2.5	<2.5	<2.5	<2.5	<2.5	<2.5	<4.0	ND
10/16/97	--	<1.0	--	<1.0	<1.0	<1.0	<1.0	<1.0	<1.0	<1.0	<0.5	ND
05/04/98	--	--	<0.5	<0.5	<0.5	<0.5	<0.5	<0.5	<0.5	<0.5	<1.0	ND
10/27/98	--	<0.5	--	<0.5	<0.5	<0.5	<0.5	<0.5	<0.5	<0.5	<1.0	ND
04/15/99	--	<1.25	--	<1.25	<1.25	<1.25	<1.25	<1.25	<1.25	<1.25	<2.50	ND

Cumulative Table of Well Data and Analytical Results

ADDITIONAL ANALYSES

Analytical values are in parts per billion (ppb)

Date	Notes	1,1- DCE	1,2- DCE	t-1,2- DCE	c-1,2- DCE	1,1- DCA	1,1,1- TCA	TCE	PCE	CF	VC	Other HVOCs
MW-3												
04/14/89	--	<0.2	<0.2	--	--	<0.2	<0.2	<0.2	<0.2	<1.0	<0.2	--
07/31/89	--	<0.2	<0.2	--	--	<0.4	0.5	<0.2	<0.2	<1.0	<0.2	--
12/08/89	--	<0.2	<0.5	--	--	<0.5	<0.5	<0.5	<0.5	<0.5	<1.0	--
03/21/90	--	<0.2	<0.5	--	--	<0.5	<0.5	<0.5	<0.5	<0.5	<1.0	--
06/19/90	--	<0.2	<0.5	--	--	<0.5	<0.5	<0.5	<0.5	<0.5	<1.0	--
09/21/90	--	<0.2	<0.5	--	--	<0.5	<0.5	<0.5	<0.5	<0.5	<1.0	--
12/28/90	--	<0.5	--	<0.5	<0.5	<0.5	<0.5	<0.5	<0.5	<0.5	<1.0	--
05/10/91	--	<0.5	--	<0.5	<0.5	<0.5	<0.5	<0.5	<0.5	<0.5	<1.0	ND
08/08/91	--	<0.5	--	<0.5	<0.5	<0.5	<0.5	<0.5	<0.5	<0.5	<1.0	ND
11/27/91	--	<0.5	--	<0.5	<0.5	<0.5	<0.5	<0.5	<0.5	<0.5	<1.0	ND
01/29/92	--	<0.5	--	<0.5	<0.5	<0.5	<0.5	<0.5	<0.5	<0.5	<1.0	ND
03/26/92	--	<0.5	--	<0.5	<0.5	<0.5	<0.5	<0.5	<0.5	<0.5	<1.0	ND
07/23/92	--	<0.5	--	<0.5	<0.5	<0.5	<0.5	<0.5	<0.5	<0.5	<0.5	<0.5
10/28/92	--	<0.5	--	<0.5	<0.5	<0.5	<0.5	<0.5	<0.5	<0.5	<1.0	ND
05/04/93	Inaccessible	--	--	--	--	--	--	--	--	--	--	--
01/05/94	Inaccessible	--	--	--	--	--	--	--	--	--	--	--
05/13/94	Paved over	--	--	--	--	--	--	--	--	--	--	--
MW-4												
04/14/89	Well destroyed	<1.0	<1.0	--	--	2.0	<1.0	<1.0	<1.0	<2.0	<1.0	--
MW-5												
04/14/89	Well destroyed	<1.0	<1.0	--	--	2.0	<1.0	<1.0	<1.0	<2.0	<1.0	--
MW-6												
04/14/89	Well destroyed	<1.0	<1.0	--	--	2.0	<1.0	<1.0	<1.0	<2.0	<1.0	--

Cumulative Table of Well Data and Analytical Results

ADDITIONAL ANALYSES

Analytical values are in parts per billion (ppb)

Date	Notes	1,1-DCE	1,2-DCE	t-1,2-DCE	c-1,2-DCE	1,1-DCA	1,1,1-TCA	TCE	PCE	CF	VC	Other HVOCs
MW-7												
04/14/89	--	<1.0	<1.0	--	--	1.0	1.0	<1.0	<1.0	<2.0	<1.0	--
07/31/89	--	<0.1	0.3	--	--	0.3	4.5	<0.1	<0.1	<0.5	<0.1	ND*
07/31/89	--	<0.1	0.4	--	--	0.2	2.6	<0.1	<0.1	<0.5	<0.1	ND*
12/08/89	--	<0.2	<0.5	--	--	<0.5	0.67	<0.5	<0.5	<0.5	<1.0	--
03/21/90	--	<0.2	<0.5	--	--	<0.5	1.4	<0.5	<0.5	<0.5	<1.0	--
06/19/90	--	<0.2	<0.5	--	--	<0.5	0.67	<0.5	<0.5	<0.5	<1.0	--
09/21/90	--	<0.2	<0.5	--	--	<0.5	<0.5	<0.5	<0.5	<0.5	<1.0	--
12/28/90	--	<0.5	--	<0.5	<0.5	<0.5	0.9	<0.5	<0.5	<0.5	<1.0	ND
05/10/91	--	<0.5	--	<0.5	<0.5	<0.5	<0.5	<0.5	<0.5	<0.5	<1.0	ND
08/08/91	--	<0.5	--	<0.5	<0.5	<0.5	<0.5	<0.5	<0.5	<0.5	<1.0	ND
11/27/91	--	<0.5	--	<0.5	<0.5	<0.5	<0.5	<0.5	<0.5	<0.5	<1.0	ND
01/29/92	--	<0.5	--	<0.5	<0.5	<0.5	<0.5	<0.5	<0.5	<0.5	<1.0	ND
03/26/92	--	<0.5	--	<0.5	<0.5	<0.5	<0.5	<0.5	<0.5	<0.5	<0.5	<0.5
07/23/92	--	<0.5	--	<0.5	<0.5	<0.5	<0.5	<0.5	<0.5	<0.5	<1.0	ND
10/28/92	--	<0.5	--	<0.5	<0.5	<0.5	<0.5	<0.5	<0.5	<0.5	<1.0	ND
05/04/93	Inaccessible	--	--	--	--	--	--	--	--	--	--	--
01/05/94	Inaccessible	--	--	--	--	--	--	--	--	--	--	--
05/13/94	--	<0.5	--	<0.5	<0.5	<0.5	<0.5	<0.5	<0.5	<0.5	<0.5	<0.5-<1.0
10/24/94	--	<0.5	--	<0.5	<0.5	<0.5	<0.5	<0.5	<0.5	<0.5	<0.5	<0.5
04/19/95	--	<0.5	--	<0.5	<0.5	<0.5	<0.5	<0.5	<0.5	<0.5	<0.5	<0.5
11/06/95	--	<1.0	--	<1.0	<1.0	<1.0	<1.0	<1.0	<1.0	<1.0	<1.0	ND
04/26/96	--	<0.5	--	<0.5	<0.5	<0.5	<0.5	<0.5	<0.5	<0.5	<0.8	<0.5-<5.0
10/10/96	--	<0.5	--	<0.5	<0.5	<0.5	<0.5	<0.5	<0.5	<0.5	<0.8	ND
04/22/97	--	<0.5	--	<0.5	<0.5	<0.5	<0.5	<0.5	<0.5	<0.5	<0.8	ND
10/16/97	--	<1.0	--	<1.0	<1.0	<1.0	<1.0	<1.0	<1.0	<1.0	<0.5	ND
05/04/98	--	<0.5	--	<0.5	<0.5	<0.5	<0.5	<0.5	<0.5	<0.5	<1.0	ND
10/27/98	--	<0.5	--	<0.5	<0.5	<0.5	<0.5	<0.5	<0.5	<0.5	<1.0	ND
04/15/99	--	<0.5	--	<0.5	<0.5	<0.5	<0.5	<0.5	<0.5	<0.5	<1.0	ND

* = 0.1 ppb 1,2-dichlorobenzene detected; other HVOCs not detected.

Cumulative Table of Well Data and Analytical Results

ADDITIONAL ANALYSES

Analytical values are in parts per billion (ppb)

Date	Notes	1,1- DCE	1,2- DCE	t-1,2- DCE	c-1,2- DCE	1,1- DCA	1,1,1- TCA	TCE	PCE	CF	VC	Other HVOCs
MW-8												
04/14/89	--	<1.0	<1.0	--	--	<1.0	<1.0	<1.0	<1.0	<2.0	<1.0	--
07/31/89	--	<0.1	--	0.6	1.9	1.7	1.7	0.4	<0.1	<0.5	1.2	ND
12/08/89	--	<0.2	0.53	--	--	<0.5	0.84	<0.5	<0.5	<0.5	<1.0	--
03/21/90	--	<0.2	0.96	--	--	<0.5	0.72	<0.5	<0.5	<0.5	<1.0	--
06/19/90	--	<0.2	0.59	--	--	<0.5	0.67	<0.5	<0.5	<0.5	<1.0	--
09/21/90	--	<0.2	<0.5	--	--	<0.5	<0.5	<0.5	<0.5	<0.5	<1.0	--
12/28/90	--	<0.5	--	<0.5	<0.5	<0.5	2.0	<0.5	<0.5	<0.5	<1.0	--
05/10/91	--	<0.5	--	<0.5	<0.5	<0.5	<0.5	<0.5	<0.5	<0.5	<1.0	ND
08/08/91	--	<0.5	--	<0.5	<0.5	<0.5	<0.5	<0.5	<0.5	<0.5	<1.0	ND
11/27/91	--	<0.5	--	<0.5	<0.5	<0.5	<0.5	<0.5	<0.5	<0.5	<1.0	ND
01/29/92	--	<0.5	--	<0.5	<0.5	<0.5	<0.5	<0.5	<0.5	<0.5	<1.0	ND
03/26/92	--	<0.5	--	<0.5	<0.5	<0.5	<0.5	<0.5	<0.5	<0.5	<0.5	<0.5
07/23/92	--	<0.5	--	<0.5	<0.5	<0.5	<0.5	<0.5	<0.5	<0.5	<0.5	<0.5
10/28/92	Inaccessible	--	--	--	--	--	--	--	--	--	--	--
05/04/93	Inaccessible	--	--	--	--	--	--	--	--	--	--	--
01/05/94	Inaccessible	--	--	--	--	--	--	--	--	--	--	--
05/13/94	--	<0.5	--	<0.5	<0.5	<0.5	<0.5	<0.5	<0.5	<0.5	<0.5	<0.5-<1.0
10/24/94	Inaccessible	--	--	--	--	--	--	--	--	--	--	--
04/19/95	Inaccessible	--	--	--	--	--	--	--	--	--	--	--
11/06/95	Inaccessible	--	--	--	--	--	--	--	--	--	--	--
04/26/96	Inaccessible	--	--	--	--	--	--	--	--	--	--	--
10/10/96	Inaccessible	--	--	--	--	--	--	--	--	--	--	--
04/22/97	--	--	<0.5	<0.5	<0.5	<0.5	<0.5	<0.5	<0.5	<0.5	<0.8	ND
10/16/97	--	<1.0	--	<1.0	<1.0	<1.0	<1.0	<10	<1.0	<1.0	<0.5	ND
05/04/98	--	<0.5	--	<0.5	<0.5	<0.5	<0.5	<0.5	<0.5	<0.5	<1.0	ND
10/27/98	--	<0.5	--	<0.5	<0.5	<0.5	<0.5	<0.5	<0.5	<0.5	<1.0	ND
04/15/99	--	<0.5	--	<0.5	<0.5	<0.5	<0.5	<0.5	<0.5	<0.5	<1.0	ND
MW-9												
05/10/91	Unable to locate	--	--	--	--	--	--	--	--	--	--	--

Cumulative Table of Well Data and Analytical Results

ADDITIONAL ANALYSES

Analytical values are in parts per billion (ppb)

Date	Notes	1,1-DCE	1,2-DCE	t-1,2-DCE	c-1,2-DCE	1,1-DCA	1,1,1-TCA	TCE	PCE	CF	VC	Other HVOCs
MW-10												
04/14/89	--	<1.0	15	--	--	2.0	<1.0	5.0	<1.0	<2.0	<1.0	--
07/31/89	--	0.7	--	6.3	27	2.9	<0.1	5.3	<0.1	<0.5	<0.1	ND
12/08/89	--	<0.2	24	--	--	3.1	<0.5	4.9	<0.5	0.6	<1.0	--
03/21/90	--	0.7	30	--	--	2.5	<0.5	3.5	<0.5	<0.5	<1.0	--
06/19/90	--	0.3	33	--	--	2.6	<0.5	6.3	<0.5	<0.5	<1.0	--
09/21/90	--	<0.2	32	--	--	5.0	<0.5	5.9	<0.5	<0.5	<1.0	--
12/28/90	--	<0.5	--	6.0	19	2.0	<0.5	5.0	<0.5	<0.5	<1.0	--
05/10/91	--	0.6	--	7.0	24	2.0	<0.5	6.0	<0.5	<0.5	<1.0	ND
08/08/91	--	<0.5	--	7.0	33	3.1	<0.5	6.2	<0.5	<0.5	<1.0	ND
11/27/91	--	<0.5	--	6.8	100	<0.5	<0.5	8.5	<0.5	<0.5	<1.0	ND
01/29/92	--	<0.5	--	9.1	30	2.8	<0.5	7.4	<0.5	<0.5	<1.0	ND
03/26/92	--	0.7	--	9.2	29	2.5	<0.5	6.8	<0.5	<0.5	<1.0	ND
07/23/92	--	<0.5	--	6.1	21	1.5	<0.5	4.7	<0.5	<0.5	<0.5	<0.5
10/28/92	--	<0.5	--	4.3	16	2.1	<0.5	4.1	<0.5	<0.5	<1.0	ND
05/04/93	Inaccessible	--	--	--	--	--	--	--	--	--	--	--
01/05/94	--	<0.5	--	1.3	5.2	0.5	1.0	0.8	<0.5	<0.5	<1.0	<0.5
05/13/94	--	<0.5	--	12	31	2.7	<0.5	4.8	<0.5	<0.5	<0.5	<0.5-<1.0
10/24/94	--	<10	--	13	44	<10	<10	<10	<10	<10	<10	<10-<20
04/19/95	--	0.7	--	14	36	<0.5	<0.5	9.2	<0.5	<0.5	<0.5	<0.5
11/06/95	--	1.0	--	19	41	1.4	<1.0	14	<1.0	<1.0	<1.0	ND
04/26/96	Inaccessible	--	--	--	--	--	--	--	--	--	--	--
10/10/96	--	0.7	--	17	38	0.8	<0.5	14	<0.5	<0.5	<0.8	ND
04/22/97	--	<0.5	--	12	27	0.5	<0.5	13	<0.5	<0.5	<0.8	ND
10/16/97	--	<1.0	--	11	23	<1.0	<1.0	<10	<1.0	<1.0	0.7	ND
05/04/98	--	<0.5	--	6.5	16	<0.5	<0.5	7.6	<0.5	<0.5	<1.0	ND
10/27/98	--	<0.5	--	7.7	18	0.54	<0.5	9.6	<0.5	<0.5	<1.0	ND
04/15/99	--	<0.5	--	8.32	19.1	0.603	<0.5	11.3	<0.5	<0.5	<1.0	ND

Cumulative Table of Well Data and Analytical Results

ADDITIONAL ANALYSES

Analytical values are in parts per billion (ppb)

Date	Notes	1,1-DCE	1,2-DCE	t-1,2-DCE	c-1,2-DCE	1,1-DCA	1,1,1-TCA	TCE	PCE	CF	VC	Other HVOCs
MW-11												
04/14/89	--	<1.0	120	--	--	<1.0	<1.0	4.0	<1.0	<2.0	10	--
07/31/89	--	0.9	--	40	110	2.2	1.4	2.9	<0.2	<0.2	<0.2	ND
12/08/89	--	0.5	120	--	--	2.1	1.2	4.1	<0.5	<0.5	2.4	--
03/21/90	--	1.3	150	--	--	1.2	1.7	3.5	<0.5	<0.5	4.3	ND*
06/19/90	--	0.068	140	--	--	1.3	<0.5	5.0	<0.5	<0.5	1.0	--
09/21/90	--	<0.2	100	--	--	1.1	<0.5	3.8	<0.5	<0.5	<1.0	--
12/28/90	--	<0.5	--	23	43	0.9	0.7	3.0	<0.5	<0.5	<1.0	--
05/10/91	--	0.9	--	44	110	0.5	<0.5	5.0	<0.5	<0.5	<1.0	ND
08/08/91	--	<0.5	--	29	77	0.9	<0.5	2.4	<0.5	<0.5	<1.0	ND
11/27/91	--	<0.5	--	34	240	<0.5	<0.5	<0.5	<0.5	<0.5	<1.0	ND
01/29/92	--	<5.0	--	33	91	<5.0	<5.0	<5.0	<5.0	<5.0	<10	ND
03/26/92	--	<2.5	--	21	51	<2.5	<2.5	<2.5	<2.5	<2.5	<5.0	ND
07/23/92	--	<0.5	--	18	46	0.6	<0.5	1.4	<0.5	<0.5	<0.5	<0.5
10/28/92	--	0.5	--	36	80	<0.5	<0.5	4.6	<0.5	<0.5	<1.0	ND
05/04/93	Inaccessible	--	--	--	--	--	--	--	--	--	--	--
01/05/94	Inaccessible	--	--	--	--	--	--	--	--	--	--	--
05/13/94	--	<0.5	--	62	82	<0.5	<0.5	7.9	<0.5	<0.5	1.7	<0.5-<1.0
10/24/94	--	<10	--	28	75	<10	<10	<10	<10	<10	<10	<10-<20
04/19/95	--	<0.5	--	18	39	<0.5	<0.5	6.5	<0.5	1.0	<0.5	ND**
11/06/95	Inaccessible	--	--	--	--	--	--	--	--	--	--	--
04/26/96	Inaccessible	--	--	--	--	--	--	--	--	--	--	--
10/10/96	Inaccessible	--	--	--	--	--	--	--	--	--	--	--
04/22/97	--	<0.5	--	4.7	12	<0.5	<0.5	3.0	<0.5	<0.5	<0.8	ND
10/16/97	--	<1.0	--	5.1	24	<1.0	<1.0	<10	<1.0	<1.0	3.7	ND
05/04/98	--	<0.5	--	4.2	12	<0.5	<0.5	2.8	<0.5	<0.5	<1.0	ND
10/27/98	--	<0.5	--	2.7	8.3	<0.5	<0.5	1.8	<0.5	<0.5	<1.0	ND
04/15/99	--	<0.5	--	3.29	10.1	<0.5	<0.5	2.87	<0.5	<0.5	<1.0	ND

* = 1.8 ppb 1,2-dichloroethane detected; other HVOCs not detected

** = Chloromethane was detected at 2.4 ppb. Other HVOCs not detected at detection limits of 0.5 ppb.

Cumulative Table of Well Data and Analytical Results

ADDITIONAL ANALYSES

Analytical values are in parts per billion (ppb)

Date	Notes	1,1- DCE	1,2- DCE	t-1,2- DCE	c-1,2- DCE	1,1- DCA	1,1,1- TCA	TCE	PCE	CF	VC	Other HVOCs
MW-12												
04/14/89	--	<1.0	1.0	--	--	<1.0	<1.0	<1.0	<1.0	<2.0	<1.0	--
07/31/89	--	<0.1	1.7	--	--	<0.1	<0.1	0.8	<0.1	<0.5	<0.1	ND
12/08/89	--	<0.2	<0.5	--	--	<0.5	<0.5	<0.5	<0.5	<0.5	<1.0	--
03/21/90	--	<0.2	<0.5	<0.5	--	<0.5	<0.5	<0.5	<0.5	<0.5	<1.0	--
06/19/90	--	<0.2	<0.5	<0.5	--	<0.5	<0.5	<0.5	<0.5	<0.5	<1.0	--
09/21/90	--	<0.2	<0.5	<0.5	--	<0.5	<0.5	<0.5	<0.5	<0.5	<1.0	--
12/28/90	--	<0.5	--	<0.5	<0.5	<0.5	<0.5	<0.5	<0.5	<0.5	<1.0	--
05/10/91	--	<0.5	--	<0.5	<0.5	<0.5	<0.5	<0.5	<0.5	<0.5	<1.0	ND
08/08/91	--	<0.5	--	<0.5	<0.5	<0.5	<0.5	<0.5	<0.5	0.9	<1.0	ND
11/27/91	--	<0.5	--	<0.5	<0.5	<0.5	<0.5	<0.5	<0.5	<0.5	<1.0	ND
01/29/92	--	<0.5	--	<0.5	<0.5	<0.5	<0.5	<0.5	<0.5	<0.5	<1.0	ND
03/26/92	--	<0.5	--	<0.5	<0.5	<0.5	<0.5	<0.5	<0.5	<0.5	<1.0	ND
07/23/92	Unable to locate	--	--	--	--	--	--	--	--	--	--	--

Cumulative Table of Well Data and Analytical Results

ADDITIONAL ANALYSES

Analytical values are in parts per billion (ppb)

Date	Notes	1,1-DCE	1,2-DCE	t-1,2-DCE	c-1,2-DCE	1,1-DCA	1,1,1-TCA	TCE	PCE	CF	VC	Other HVOCs
MW-13												
03/21/90	--	<0.2	<0.5	--	--	<0.5	<0.5	<0.5	<0.5	<0.5	<1.0	--
06/19/90	--	<0.2	<0.5	--	--	<0.5	<0.5	<0.5	<0.5	<0.5	<1.0	--
09/20/90	--	<0.2	<0.5	--	--	<0.5	<0.5	<0.5	<0.5	<0.5	<1.0	--
12/28/90	--	<0.5	--	<0.5	<0.5	<0.5	<0.5	<0.5	<0.5	<0.5	<1.0	--
05/10/91	--	<0.5	--	<0.5	<0.5	<0.5	<0.5	<0.5	<0.5	<0.5	<1.0	ND*
08/08/91	--	<0.5	--	<0.5	<0.5	<0.5	<0.5	<0.5	<0.5	<0.5	<1.0	ND
11/27/91	--	<0.5	--	<0.5	<0.5	<0.5	<0.5	<0.5	<0.5	<0.5	<1.0	ND
01/29/92	--	<0.5	--	<0.5	<0.5	<0.5	<0.5	<0.5	<0.5	<0.5	<1.0	ND
03/26/92	--	<0.5	--	<0.5	<0.5	<0.5	<0.5	<0.5	<0.5	<0.5	<1.0	ND
07/23/92	--	<0.5	--	<0.5	<0.5	<0.5	<0.5	<0.5	<0.5	<0.5	<0.5	<0.5
10/28/92	--	<0.5	--	<0.5	<0.5	<0.5	<0.5	<0.5	<0.5	<0.5	<1.0	ND
05/04/93	Inaccessible	--	--	--	--	--	--	--	--	--	--	--
01/05/94	Inaccessible	--	--	--	--	--	--	--	--	--	--	--
05/13/94	--	<0.5	--	<0.5	<0.5	<0.5	<0.5	<0.5	<0.5	<0.5	<0.5	<0.5-<1.0
10/24/94	--	<0.5	--	<0.5	<0.5	<0.5	<0.5	<0.5	<0.5	<0.5	<0.5	<0.5-<1.0
04/19/95	--	<0.5	--	<0.5	<0.5	<0.5	<0.5	<0.5	<0.5	<0.5	<0.5	<0.5
11/06/95	--	<1.0	--	<1.0	<1.0	<1.0	<1.0	<1.0	<1.0	<1.0	<1.0	ND
04/26/96	--	<0.5	--	<0.5	<0.5	<0.5	<0.5	<0.5	<0.5	<0.5	<0.8	<0.5-<5.0
10/10/96	Inaccessible	--	--	--	--	--	--	--	--	--	--	--
04/22/97	--	<0.5	--	<0.5	<0.5	<0.5	<0.5	<0.5	<0.5	<0.5	<0.8	ND
10/16/97	--	<1.0	--	<1.0	<1.0	<1.0	<1.0	<1.0	<1.0	<1.0	<0.5	ND
05/04/98	--	<0.5	--	<0.5	<0.5	<0.5	<0.5	<0.5	<0.5	<0.5	<1.0	ND
10/27/98	--	<0.5	--	<0.5	<0.5	<0.5	<0.5	<0.5	<0.5	<0.5	<1.0	ND

* = 3 ppb 1,1,2,2-tetrachloroethane detected; other HVOCs not detected.

Cumulative Table of Well Data and Analytical Results

ADDITIONAL ANALYSES

Analytical values are in parts per billion (ppb)

Date	Notes	1,1- DCE	1,2- DCE	t-1,2- DCE	c-1,2- DCE	1,1- DCA	1,1,1- TCA	TCE	PCE	CF	VC	Other HVOCs
MW-14												
03/21/90	--	<2.0	<0.5	--	--	<0.5	<0.5	<0.5	<0.5	<0.5	<1.0	--
06/19/90	--	<2.0	<0.5	--	--	<0.5	<0.5	<0.5	<0.5	<0.5	<1.0	--
09/20/90	--	<2.0	<0.5	--	--	<0.5	<0.5	<0.5	<0.5	<0.5	<1.0	--
12/28/90	--	<0.5	--	<0.5	<0.5	<0.5	<0.5	<0.5	<0.5	<0.5	<1.0	--
05/10/91	--	<0.5	--	<0.5	<0.5	<0.5	<0.5	<0.5	<0.5	<0.5	<1.0	ND
08/08/91	--	<0.5	--	<0.5	<0.5	<0.5	<0.5	<0.5	<0.5	<0.5	<1.0	ND
11/27/91	--	<0.5	--	<0.5	<0.5	<0.5	<0.5	<0.5	<0.5	<0.5	<1.0	ND
01/29/92	--	<0.5	--	<0.5	<0.5	<0.5	<0.5	<0.5	<0.5	<0.5	<1.0	ND
03/26/92	--	<0.5	--	<0.5	<0.5	<0.5	<0.5	<0.5	<0.5	<0.5	<1.0	ND
07/23/92	--	<0.5	--	<0.5	<0.5	<0.5	<0.5	<0.5	<0.5	<0.5	<0.5	<0.5
10/28/92	--	<0.5	--	<0.5	<0.5	<0.5	<0.5	<0.5	<0.5	<0.5	<1.0	ND
05/04/93	Abandoned	--	--	--	--	--	--	--	--	--	--	--

Cumulative Table of Well Data and Analytical Results

ADDITIONAL ANALYSES

Analytical values are in parts per billion (ppb)

Date	Notes	1,1-DCE	1,2-DCE	t-1,2-DCE	c-1,2-DCE	1,1-DCA	1,1,1-TCA	TCE	PCE	CF	VC	Other HVOCs
MW-15												
03/21/90	--	<0.2	<0.5	--	--	<0.5	<0.5	<0.5	<0.5	<0.5	<1.0	--
06/19/90	--	<0.2	<0.5	--	--	<0.5	<0.5	<0.5	<0.5	<0.5	<1.0	--
09/20/90	--	<0.2	<0.5	--	--	<0.5	<0.5	<0.5	<0.5	<0.5	<1.0	--
12/28/90	--	<0.5	--	<0.5	<0.5	<0.5	<0.5	<0.5	<0.5	<0.5	<1.0	--
05/10/91	--	<0.5	--	<0.5	<0.5	<0.5	<0.5	<0.5	<0.5	<0.5	<1.0	ND*
08/08/91	--	<0.5	--	<0.5	<0.5	<0.5	<0.5	<0.5	<0.5	<0.5	<1.0	ND
11/27/91	--	<0.5	--	<0.5	<0.5	<0.5	<0.5	<0.5	<0.5	<0.5	<1.0	ND
01/29/92	--	<0.5	--	<0.5	<0.5	<0.5	<0.5	<0.5	<0.5	<0.5	<1.0	ND
03/26/92	--	<0.5	--	<0.5	<0.5	<0.5	<0.5	<0.5	<0.5	<0.5	<1.0	ND
07/23/92	--	<0.5	--	<0.5	<0.5	<0.5	<0.5	<0.5	<0.5	<0.5	<0.5	<0.5
10/28/92	--	<0.5	--	<0.5	<0.5	<0.5	<0.5	<0.5	<0.5	<0.5	<1.0	ND
05/04/93	Inaccessible	--	--	--	--	--	--	--	--	--	--	--
01/05/94	Inaccessible	--	--	--	--	--	--	--	--	--	--	--
05/13/94	--	<0.5	--	<0.5	<0.5	<0.5	<0.5	<0.5	<0.5	<0.5	<0.5	<0.5-<1.0
10/24/94	--	<0.5	--	<0.5	<0.5	<0.5	<0.5	3.1	<0.5	3.8	<0.5	<0.5-<1.0
04/19/95	--	<0.5	--	<0.5	<0.5	<0.5	<0.5	<0.5	<0.5	<0.5	<0.5	<0.5
11/06/95	--	<1.0	--	<1.0	<1.0	<1.0	<1.0	<1.0	<1.0	<1.0	<1.0	ND
04/26/96	--	<0.5	--	<0.5	<0.5	<0.5	<0.5	<0.5	<0.5	<0.5	<0.8	<0.5-<5.0
10/10/96	--	<0.5	--	<0.5	<0.5	<0.5	<0.5	<0.5	<0.5	<0.5	<0.8	ND
04/22/97	--	<0.5	--	<0.5	<0.5	<0.5	<0.5	<0.5	<0.5	<0.5	<0.8	ND
10/16/97	--	<1.0	--	<1.0	<1.0	<1.0	<1.0	<1.0	<1.0	<1.0	<0.5	ND
05/04/98	--	<0.5	--	<0.5	<0.5	<0.5	<0.5	<0.5	<0.5	<0.5	<1.0	ND

* = 0.9 ppb 1,2-dichlorobenzene detected; other HVOCs not detected.

Cumulative Table of Well Data and Analytical Results

ADDITIONAL ANALYSES

Analytical values are in parts per billion (ppb)

Date	Notes	1,1- DCE	1,2- DCE	t-1,2- DCE	c-1,2- DCE	1,1- DCA	1,1,1- TCA	TCE	PCE	CF	VC	Other HVOCs
MW-16												
03/21/90	--	<0.2	0.8	--	--	<0.5	<0.5	27	8.0	2.0	<1.0	--
06/19/90	--	<0.2	<0.5	--	--	<0.5	<0.5	35	7.0	2.0	<1.0	--
09/20/90	--	<0.2	0.9	--	--	<0.5	<0.5	49	15	4.1	<1.0	--
12/28/90	--	<0.5	--	<0.5	<0.5	<0.5	<0.5	29	18	4.0	<1.0	ND*
05/10/91	--	<0.5	--	<0.5	0.5	<0.5	<0.5	32	10	4.0	<1.0	ND
08/08/91	--	<0.5	--	<0.5	<0.5	<0.5	<0.5	35	13	1.9	<1.0	ND
11/27/91	--	<0.5	--	<0.5	1.3	<0.5	<0.5	47	12	1.8	<1.0	ND**
01/29/92	--	<0.5	--	<0.5	0.9	<0.5	<0.5	31	11	1.8	<1.0	ND
03/26/92	--	<0.8	--	<0.8	<0.8	<0.8	<0.8	24	8.5	1.7	<1.7	<0.8-<1.7
07/23/92	--	<0.5	--	<0.5	0.9	<0.5	<0.5	37	12	1.0	<0.5	<0.5
10/28/92	--	<0.5	--	<0.5	1.7	<0.5	<0.5	39	14	1.1	<1.0	ND
05/04/93	--	<0.5	--	<0.5	<0.5	<0.5	<0.5	32	10	1.1	<1.0	<0.5
01/05/94	Inaccessible	--	--	--	--	--	--	--	--	--	--	--
05/13/94	Paved over	--	--	--	--	--	--	--	--	--	--	--

* = 0.5 ppb 1,2-dichloroethane detected; other HVOCs not detected.

** = 0.9 ppb 1,2-dichloroethane detected; other HVOCs not detected.

Cumulative Table of Well Data and Analytical Results

ADDITIONAL ANALYSES

Analytical values are in parts per billion (ppb)

Date	Notes	1,1- DCE	1,2- DCE	t-1,2- DCE	c-1,2- DCE	1,1- DCA	1,1,1- TCA	TCE	PCE	CF	VC	Other HVOCs
MW-17												
03/21/90	--	<0.2	5.2	--	--	0.7	1.3	32	11	1.1	<1.0	--
06/19/90	--	<0.2	3.1	--	--	<0.5	1.0	38	13	1.2	<1.0	--
09/20/90	--	<0.2	2.4	--	--	<0.5	1.4	44	16	2.8	<1.0	--
12/28/90	--	<0.5	--	<0.5	2.0	<0.5	0.6	34	15	2.0	<1.0	--
05/10/91	--	<0.5	--	<0.5	3.0	<0.5	0.6	37	14	1.0	<1.0	ND
08/08/91	--	<0.5	--	<0.5	2.5	<0.5	<0.5	69	15	0.9	<1.0	ND
11/27/91	--	<0.5	--	<0.5	13	<0.5	<0.5	59	14	2.4	<1.0	ND
01/29/92	--	<0.5	--	<0.5	2.9	<0.5	0.8	35	15	1.1	<1.0	ND
03/26/92	--	<0.5	--	<0.5	1.5	<0.5	0.7	41	12	0.6	<1.0	ND
07/23/92	--	<0.5	--	<0.5	1.1	<0.5	<0.5	31	14	0.8	<0.5	<0.5
10/28/92	--	<0.5	--	<0.5	1.6	<0.5	<0.5	42	11	0.8	<1.0	ND
05/04/93	--	<0.5	--	<0.5	1.1	<0.5	<0.5	26	12	0.6	<1.0	<0.5
01/05/94	--	<0.5	--	<0.5	1.1	<0.5	<0.5	25	13	0.8	<1.0	<0.5
05/13/94	--	<0.5	--	<0.5	1.0	<0.5	0.6	23	13	<0.5	<0.5	<0.5-<1.0
10/24/94	--	<0.5	--	<0.5	1.4	<0.5	<0.5	26	13	<0.5	<0.5	<0.5-<1.0
04/19/95	--	<0.5	--	<0.5	0.9	<0.5	1.1	21	12	1.2	<0.5	<0.5
11/06/95	--	<1.0	--	<1.0	1.1	<1.0	<1.0	29	13	<1.0	<1.0	ND
04/26/96	--	<0.5	--	<0.5	0.8	<0.5	1.2	24	11	0.6	<0.8	<0.5-<5.0
10/10/96	--	<0.5	--	<0.5	1.5	<0.5	0.9	31	15	0.6	<0.8	ND
04/22/97	--	<0.5	--	<0.5	1.2	<0.5	1.7	21	11	<0.5	<0.8	ND
10/16/97	--	<1.0	--	<1.0	1.1	<1.0	1.2	21	7.9	<1.0	<0.5	ND
05/04/98	--	<0.5	--	<0.5	1.4	<0.5	2.1	20	11	0.58	<1.0	ND

Cumulative Table of Well Data and Analytical Results

ADDITIONAL ANALYSES

Analytical values are in parts per billion (ppb)

Date	Notes	1,1- DCE	1,2- DCE	t-1,2- DCE	c-1,2- DCE	1,1- DCA	1,1,1- TCA	TCE	PCE	CF	VC	Other HVOCs
MW-18												
03/21/90	--	<0.2	1.7	--	--	<0.5	2.4	33	20	0.9	<1.0	--
06/19/90	--	<0.2	2.7	--	--	<0.5	0.9	63	20	0.73	<1.0	--
09/20/90	--	<0.2	3.3	--	--	<0.5	1.6	76	25	1.7	<1.0	--
12/28/90	--	<0.5	--	<0.5	2.0	<0.5	0.8	44	21	1.0	<1.0	--
05/10/91	--	<0.5	--	<0.5	2.0	<0.5	0.7	47	20	2.0	<1.0	ND
08/08/91	--	<0.5	--	<0.5	2.0	<0.5	0.7	32	25	1.0	<1.0	ND
11/27/91	--	<0.5	--	<0.5	3.6	<0.5	0.5	60	18	1.5	<1.0	ND
01/29/92	--	<5.0	--	<5.0	<5.0	<5.0	<5.0	67	17	<5.0	<10	ND
03/26/92	--	<1.2	--	<1.2	6.4	<1.2	<1.2	130	19	1.7	<2.5	ND
07/23/92	--	<0.5	--	<0.5	3.0	<0.5	0.5	67	19	0.8	<0.5	<0.5
10/28/92	--	<0.5	--	<0.5	1.1	<0.5	<0.5	52	14	0.8	<1.0	ND
05/04/93	--	<0.5	--	<0.5	1.9	<0.5	0.7	48	18	2.5	<1.0	ND*
01/05/94	--	<0.5	--	<0.5	4.0	<0.5	0.8	94	17	1.0	<1.0	<0.5
05/13/94	--	<0.5	--	<0.5	0.8	<0.5	0.8	16	15	0.8	<0.5	<0.5-<1.0
10/27/94	--	<0.5	--	<0.5	<0.5	<0.5	<0.5	22	15	1.2	<0.5	<0.5-<1.0
04/19/95	--	<0.5	--	<0.5	2.2	<0.5	1.3	46	14	1.1	<0.5	ND**
11/06/95	--	<1.0	--	<1.0	1.8	<1.0	1.2	45	18	<1.0	<1.0	ND
04/26/96	--	<0.5	--	0.9	2.8	<0.5	3.0	31	17	0.6	<0.8	<0.5-<5.0
10/10/96	Paved over	--	--	--	--	--	--	--	--	--	--	--
04/22/97	--	<0.5	--	<0.5	1.7	<0.5	3.2	26	15	<0.5	<0.8	ND
10/16/97	--	<1.0	--	<1.0	1.0	<1.0	2.2	25	11	<1.0	<0.5	ND
05/04/98	--	1.1	--	1.7	4.5	2.5	3.1	40	<1.0	<1.0	<2.0	ND
10/27/98	--	<0.5	--	<0.5	0.77	<0.5	1.7	19	14	<0.5	<1.0	ND
04/15/99	--	<0.625	--	1.78	3.45	<0.625	2.29	27.4	14.5	0.908	<1.25	ND

* = Dichloromethane detected at 6.2 ppb; other HVOCs not detected at detection limits of 0.5 ppb.

** = Chloromethane was detected at 0.6 ppb. Other HVOCs not detected at detection limits of 0.5 ppb.

Cumulative Table of Well Data and Analytical Results

ADDITIONAL ANALYSES

Analytical values are in parts per billion (ppb)

Date	Notes	1,1- DCE	1,2- DCE	t-1,2- DCE	c-1,2- DCE	1,1- DCA	1,1,1- TCA	TCE	PCE	CF	VC	Other HVOCs
MW-19												
03/21/90	--	<0.2	10	--	--	<0.5	2.5	41	53	3.2	<1.0	--
06/19/90	--	<0.2	13	--	--	<0.5	1.5	46	47	2.8	<1.0	--
09/20/90	--	<0.2	5.8	--	--	<0.5	2.5	39	32	3.1	<1.0	--
12/28/90	--	<0.5	--	0.8	22	<0.5	1.0	40	44	3.0	<1.0	--
05/10/91	--	<0.5	--	2.0	12	<0.5	1.0	47	47	3.0	<1.0	ND
08/08/91	--	<0.5	--	1.1	4.8	<0.5	1.1	41	35	2.8	<1.0	ND
11/27/91	--	<0.5	--	1.9	29	<0.5	0.9	59	31	2.7	<1.0	ND
01/29/92	--	<5.0	--	<5.0	8.9	<5.0	<5.0	51	44	3	<10	ND
03/26/92	--	<1.2	--	1.7	23	<1.2	1.5	68	130	1.4	<2.5	ND*
07/23/92	--	1.1	--	1.4	5.6	<0.5	1.0	61	38	3.3	<0.5	<0.5
10/28/92	--	<0.5	--	0.9	5.3	<0.5	1.1	46	24	2.2	<1.0	ND
05/04/93	--	<0.5	--	2.5	8.7	0.5	1.1	69	32	3.9	<1.0	<0.5
01/05/94	--	<0.5	--	1.7	1.7	<0.5	16	49	46	<0.5	<1.0	<0.5
05/13/94	--	<0.5	--	1.8	22	<0.5	0.7	40	58	<0.5	<0.5	<0.5-<1.0
10/24/94	--	<50	--	110	54	<50	<50	98	300	<50	<50	<50-<100
04/19/95	--	<0.5	--	<0.5	65	<0.5	<0.5	130	670	<0.5	<0.5	<0.5
11/06/95	Abandoned	--	--	--	--	--	--	--	--	--	--	--
MW-19A												
11/06/95	--	1.0	--	<1.0	110	<1.0	<1.0	160	1500	<1.0	<1.0	ND
04/26/96	--	<5.0	--	<5.0	140	<5.0	<5.0	200	990	<5.0	<8.0	<5.0-<50
10/10/96	--	<10	--	<10	110	<10	<10	150	1500	<10	<16	ND
04/22/97	--	<5.0	--	7.1	85	9.1	<5.0	150	830	<5.0	<8.0	ND
10/16/97	--	1.6	--	6.9	100	5.5	<1.0	130	660	<1.0	4.2	ND**
05/04/98	--	<10	--	13	80	<10	<10	230	500	<10	<20	ND
10/27/98	--	<25	--	<25	70	<25	<25	80	910	<25	<50	ND

* = 1,1,2,2-Tetrachloroethane detected at 1.8 ppb; other HVOCs not detected at detection limits of 1.2 to 2.5 ppb.

** = Laboratory report indicates 1,1,2,2-Tetrachloroethane was detected at 3.8 ppb.

Reported values for cis-1,2-dichloroethene; trichloroethene and tetrachloroethene are from 50X dilution sample re-analysis.

Cumulative Table of Well Data and Analytical Results

ADDITIONAL ANALYSES

Analytical values are in parts per billion (ppb)

Date	Notes	1,1- DCE	1,2- DCE	t-1,2- DCE	c-1,2- DCE	1,1- DCA	1,1,1- TCA	TCE	PCE	CF	VC	Other HVOCs
TRIP BLANK												
04/14/89	--	<1.0	<0.5	--	--	<1.0	<1.0	<1.0	<1.0	<2.0	<1.0	--
07/31/89	--	<0.1	<0.5	--	--	<0.1	<0.1	<0.1	<0.1	<0.5	<0.1	--
12/08/89	--	<0.2	<0.5	--	--	<0.5	<0.5	<0.5	<0.5	<0.5	<1.0	--
03/21/90	--	<0.2	<0.5	--	--	<0.5	<0.5	<0.5	<0.5	<0.5	<1.0	--
03/26/90	--	<0.2	<0.5	--	--	<0.5	<0.5	<0.5	<0.5	<0.5	<1.0	--
06/19/90	--	<0.2	<0.5	--	--	<0.5	<0.5	<0.5	<0.5	<0.5	<1.0	--
09/21/90	--	<0.2	<0.5	--	--	<0.5	<0.5	<0.5	<0.5	<0.5	<1.0	--
12/28/90	--	<0.5	--	<0.5	<0.5	<0.5	<0.5	<0.5	<0.5	<0.5	<1.0	--
05/10/91	--	<0.5	--	<0.5	<0.5	<0.5	<0.5	<0.5	<0.5	<0.5	<1.0	ND
08/08/91	--	<0.5	--	<0.5	<0.5	<0.5	<0.5	<0.5	<0.5	<0.5	<1.0	ND*
11/27/91	--	<0.5	--	<0.5	<0.5	<0.5	<0.5	<0.5	<0.5	<0.5	<1.0	ND**
01/29/92	--	<0.5	--	<0.5	<0.5	<0.5	<0.5	<0.5	<0.5	<0.5	<1.0	ND
03/26/92	--	<0.5	--	<0.5	<0.5	<0.5	<0.5	<0.5	<0.5	<0.5	<1.0	ND
07/23/92	--	<0.5	--	<0.5	<0.5	<0.5	<0.5	<0.5	<0.5	<0.5	<0.5	<0.5
10/28/92	--	<0.5	--	<0.5	<0.5	<0.5	<0.5	<0.5	<0.5	<0.5	<1.0	ND
05/04/93	--	<0.5	--	<0.5	<0.5	<0.5	<0.5	<0.5	<0.5	<0.5	<1.0	<0.5
11/06/95	--	<1.0	--	<1.0	<1.0	<1.0	<1.0	<1.0	<1.0	<1.0	<1.0	ND

* = 3.1 ppb 1,2-dichlorobenzene detected; other HVOCs not detected.

** = Trace concentrations of trihalomethane compounds detected in bailer blank.

Cumulative Table of Well Data and Analytical Results

ADDITIONAL ANALYSES

Analytical values are in parts per billion (ppb)

Date	Notes	1,1- DCE	1,2- DCE	t-1,2- DCE	c-1,2- DCE	1,1- DCA	1,1,1- TCA	TCE	PCE	CF	VC	Other HVOCs
BAILER BLANK												
05/10/91	--	<0.5	--	<0.5	<0.5	<0.5	<0.5	<0.5	<0.5	<0.5	<1.0	ND
08/08/91	--	<0.5	--	<0.5	<0.5	<0.5	<0.5	<0.5	<0.5	<0.5	<1.0	ND
11/27/91	--	<0.5	--	<0.5	<0.5	<0.5	<0.5	<0.5	<0.5	<0.5	<1.0	ND*
01/29/92	--	<0.5	--	<0.5	<0.5	<0.5	<0.5	<0.5	<0.5	<0.5	<1.0	ND
03/26/92	--	<0.5	--	<0.5	<0.5	<0.5	<0.5	<0.5	<0.5	<0.5	<1.0	ND
07/23/92	--	<0.5	--	<0.5	<0.5	<0.5	<0.5	<0.5	<0.5	<0.5	<0.5	<0.5
10/28/92	--	<0.5	--	<0.5	<0.5	<0.5	<0.5	<0.5	<0.5	<0.5	<1.0	ND
05/04/93	--	<0.5	--	<0.5	<0.5	<0.5	<0.5	<0.5	<0.5	<0.5	<1.0	<0.5

* = Trace concentrations of trihalomethane compounds detected in bailer blank.

Note: Blaine Tech Services, Inc. began routine monitoring of the groundwater wells at this site on October 27, 1998. Earlier field data and analytical results are drawn from the May 4, 1998, Gettler-Ryan, Inc. report.

ABBREVIATIONS:

TPH = Total Petroleum Hydrocarbons
 ND = Not detected at or above the minimum quantitation limit. See laboratory reports for minimum quantitation limits.
 SPH = Separate Phase Hydrocarbons
 MTBE = Methyl-tertiary-butyl ether
 1,1-DCE = 1,1-Dichloroethene
 1,2-DCE = 1,2-Dichloroethene
 t-1,2-DCE = trans-1,2-Dichloroethene
 c-1,2-DCE = cis-1,2-Dichloroethene
 1,1-DCA = 1,1-Dichloroethane
 1,1,1-TCA = 1,1,1-Trichloroethane
 TCE = Trichloroethene
 PCE = Tetrachloroethene
 CF = Chloroform
 VC = Vinyl Chloride
 Other HVOCs = Other Halogenated Volatile Organic Compounds

Analytical Appendix



Sequoia Analytical

1551 Industrial Road
San Carlos, CA 94070-4111
(650) 232-9600
FAX (650) 232-9612

May 12, 1999

Christine Lillie
Blaine Tech Services
1680 Rogers Avenue
San Jose, CA 95112

RE: Chevron(5)/L904200

Dear Christine Lillie:

Enclosed are the results of analyses for sample(s) received by the laboratory on April 16, 1999. If you have any questions concerning this report, please feel free to contact me.

Sincerely,

Mike Gregory
Project Manager D.M.





Blaine Tech Services 1680 Rogers Avenue San Jose, CA 95112	Project: Chevron(5) Project Number: Chevron 206265, 990415-J1 Project Manager: Christine Lillie	Sampled: 4/15/99 Received: 4/16/99 Reported: 5/12/99
--	---	--

ANALYTICAL REPORT FOR L904200

Sample Description	Laboratory Sample Number	Sample Matrix	Date Sampled
MW2A	L904200-01	Water	4/15/99
MW7	L904200-02	Water	4/15/99
MW8	L904200-03	Water	4/15/99
MW10	L904200-04	Water	4/15/99
MW11	L904200-05	Water	4/15/99
MW18	L904200-07	Water	4/15/99
TB	L904200-08	Water	4/15/99





Blaine Tech Services 1680 Rogers Avenue San Jose, CA 95112	Project: Chevron(5) Project Number: Chevron 206265, 990415-J1 Project Manager: Christine Lillie	Sampled: 4/15/99 Received: 4/16/99 Reported: 5/12/99
--	---	--

Sample Description: MW2A
Laboratory Sample Number: L904200-01

Analyte	Batch Number	Date Prepared	Date Analyzed	Specific Method/ Surrogate Limits	Reporting Limit	Result	Units	Notes*
---------	--------------	---------------	---------------	--------------------------------------	-----------------	--------	-------	--------

Sequoia Analytical - San Carlos

Total Purgeable Hydrocarbons (C6-C12), BTEX and MTBE by DHS LUFT

Purgeable Hydrocarbons as Gasoline	9040105	4/21/99	4/21/99		50.0	116	ug/l	1
Benzene	"	"	"		0.500	0.609	"	
Toluene	"	"	"		0.500	ND	"	
Ethylbenzene	"	"	"		0.500	ND	"	
Xylenes (total)	"	"	"		0.500	ND	"	
Methyl tert-butyl ether	"	"	"		5.00	ND	"	
Surrogate: <i>a,a,a-Trifluorotoluene</i>	"	"	"	70.0-130		93.4	%	

Volatile Organic Compounds by EPA Method 8010B

Bromodichloromethane	9040129	4/28/99	4/28/99		1.25	ND	ug/l	2
Bromoform	"	"	"		1.25	ND	"	
Bromomethane	"	"	"		2.50	ND	"	
Carbon tetrachloride	"	"	"		1.25	ND	"	
Chlorobenzene	"	"	"		1.25	ND	"	
Chloroethane	"	"	"		2.50	ND	"	
2-Chloroethylvinyl ether	"	"	"		2.50	ND	"	
Chloroform	"	"	"		1.25	ND	"	
Chloromethane	"	"	"		2.50	ND	"	
Dibromochloromethane	"	"	"		1.25	ND	"	
1,3-Dichlorobenzene	"	"	"		1.25	ND	"	
1,4-Dichlorobenzene	"	"	"		1.25	ND	"	
1,2-Dichlorobenzene	"	"	"		1.25	ND	"	
1,1-Dichloroethane	"	"	"		1.25	ND	"	
1,2-Dichloroethane	"	"	"		1.25	ND	"	
1,1-Dichloroethene	"	"	"		1.25	ND	"	
cis-1,2-Dichloroethene	"	"	"		1.25	ND	"	
trans-1,2-Dichloroethene	"	"	"		1.25	ND	"	
1,2-Dichloropropane	"	"	"		1.25	ND	"	
cis-1,3-Dichloropropene	"	"	"		1.25	ND	"	
trans-1,3-Dichloropropene	"	"	"		1.25	ND	"	
Methylene chloride	"	"	"		12.5	ND	"	
1,1,1,2-Tetrachloroethane	"	"	"		1.25	ND	"	
Tetrachloroethene	"	"	"		1.25	ND	"	
1,1,1-Trichloroethane	"	"	"		1.25	ND	"	
1,1,2-Trichloroethane	"	"	"		1.25	ND	"	
Trichloroethene	"	"	"		1.25	ND	"	
Trichlorofluoromethane	"	"	"		1.25	ND	"	
Vinyl chloride	"	"	"		2.50	ND	"	
Surrogate: <i>4-BFB</i>	"	"	"	70.0-130		104	%	





Blaine Tech Services 1680 Rogers Avenue San Jose, CA 95112	Project: Chevron(5) Project Number: Chevron 206265, 990415-J1 Project Manager: Christine Lillie	Sampled: 4/15/99 Received: 4/16/99 Reported: 5/12/99
--	---	--

Sample Description: MW7
Laboratory Sample Number: L904200-02

Analyte	Batch Number	Date Prepared	Date Analyzed	Specific Method/ Surrogate Limits	Reporting Limit	Result	Units	Notes*
---------	--------------	---------------	---------------	--------------------------------------	-----------------	--------	-------	--------

Sequoia Analytical - San Carlos

Total Purgeable Hydrocarbons (C6-C12), BTEX and MTBE by DHS LUFT

Purgeable Hydrocarbons as Gasoline	9040105	4/21/99	4/21/99		50.0	ND	ug/l	
Benzene	"	"	"		0.500	ND	"	
Toluene	"	"	"		0.500	ND	"	
Ethylbenzene	"	"	"		0.500	ND	"	
Xylenes (total)	"	"	"		0.500	ND	"	
Methyl tert-butyl ether	"	"	"		5.00	ND	"	
<i>Surrogate: a,a,a-Trifluorotoluene</i>	"	"	"	70.0-130		91.0	%	

Volatile Organic Compounds by EPA Method 8010B

Bromodichloromethane	9040129	4/28/99	4/29/99		0.500	ND	ug/l	
Bromoform	"	"	"		0.500	ND	"	
Bromomethane	"	"	"		1.00	ND	"	
Carbon tetrachloride	"	"	"		0.500	ND	"	
Chlorobenzene	"	"	"		0.500	ND	"	
Chloroethane	"	"	"		1.00	ND	"	
2-Chloroethylvinyl ether	"	"	"		1.00	ND	"	
Chloroform	"	"	"		0.500	ND	"	
Chloromethane	"	"	"		1.00	ND	"	
Dibromochloromethane	"	"	"		0.500	ND	"	
1,3-Dichlorobenzene	"	"	"		0.500	ND	"	
1,4-Dichlorobenzene	"	"	"		0.500	ND	"	
1,2-Dichlorobenzene	"	"	"		0.500	ND	"	
1,1-Dichloroethane	"	"	"		0.500	ND	"	
1,2-Dichloroethane	"	"	"		0.500	ND	"	
1,1-Dichloroethene	"	"	"		0.500	ND	"	
cis-1,2-Dichloroethene	"	"	"		0.500	ND	"	
trans-1,2-Dichloroethene	"	"	"		0.500	ND	"	
1,2-Dichloropropane	"	"	"		0.500	ND	"	
cis-1,3-Dichloropropene	"	"	"		0.500	ND	"	
trans-1,3-Dichloropropene	"	"	"		0.500	ND	"	
Methylene chloride	"	"	"		5.00	ND	"	
1,1,1,2-Tetrachloroethane	"	"	"		0.500	ND	"	
Tetrachloroethene	"	"	"		0.500	ND	"	
1,1,1-Trichloroethane	"	"	"		0.500	ND	"	
1,1,2-Trichloroethane	"	"	"		0.500	ND	"	
Trichloroethene	"	"	"		0.500	ND	"	
Trichlorofluoromethane	"	"	"		0.500	ND	"	
Vinyl chloride	"	"	"		1.00	ND	"	
<i>Surrogate: 4-BFB</i>	"	"	"	70.0-130		113	%	





Blaine Tech Services 1680 Rogers Avenue San Jose, CA 95112	Project: Chevron(5) Project Number: Chevron 206265, 990415-J1 Project Manager: Christine Lillie	Sampled: 4/15/99 Received: 4/16/99 Reported: 5/12/99
--	---	--

Sample Description: MW8
Laboratory Sample Number: L904200-03

Analyte	Batch Number	Date Prepared	Date Analyzed	Specific Method/ Surrogate Limits	Reporting Limit	Result	Units	Notes*
---------	--------------	---------------	---------------	--------------------------------------	-----------------	--------	-------	--------

Sequoia Analytical - San Carlos

Total Purgeable Hydrocarbons (C6-C12), BTEX and MTBE by DHS LUFT

Purgeable Hydrocarbons as Gasoline	9040105	4/21/99	4/21/99		50.0	ND	ug/l	
Benzene	"	"	"		0.500	ND	"	
Toluene	"	"	"		0.500	ND	"	
Ethylbenzene	"	"	"		0.500	ND	"	
Xylenes (total)	"	"	"		0.500	ND	"	
Methyl tert-butyl ether	"	"	"		5.00	ND	"	
<i>Surrogate: a,a,a-Trifluorotoluene</i>	"	"	"	70.0-130		87.1	%	

Volatile Organic Compounds by EPA Method 8010B

Bromodichloromethane	9040141	4/28/99	4/29/99		0.500	ND	ug/l	
Bromoform	"	"	"		0.500	ND	"	
Bromomethane	"	"	"		1.00	ND	"	
Carbon tetrachloride	"	"	"		0.500	ND	"	
Chlorobenzene	"	"	"		0.500	ND	"	
Chloroethane	"	"	"		1.00	ND	"	
2-Chloroethylvinyl ether	"	"	"		1.00	ND	"	
Chloroform	"	"	"		0.500	ND	"	
Chloromethane	"	"	"		1.00	ND	"	
Dibromochloromethane	"	"	"		0.500	ND	"	
1,3-Dichlorobenzene	"	"	"		0.500	ND	"	
1,4-Dichlorobenzene	"	"	"		0.500	ND	"	
1,2-Dichlorobenzene	"	"	"		0.500	ND	"	
1,1-Dichloroethane	"	"	"		0.500	ND	"	
1,2-Dichloroethane	"	"	"		0.500	ND	"	
1,1-Dichloroethene	"	"	"		0.500	ND	"	
cis-1,2-Dichloroethene	"	"	"		0.500	ND	"	
trans-1,2-Dichloroethene	"	"	"		0.500	ND	"	
1,2-Dichloropropane	"	"	"		0.500	ND	"	
cis-1,3-Dichloropropene	"	"	"		0.500	ND	"	
trans-1,3-Dichloropropene	"	"	"		0.500	ND	"	
Methylene chloride	"	"	"		5.00	ND	"	
1,1,1,2-Tetrachloroethane	"	"	"		0.500	ND	"	
Tetrachloroethene	"	"	"		0.500	ND	"	
1,1,1-Trichloroethane	"	"	"		0.500	ND	"	
1,1,2-Trichloroethane	"	"	"		0.500	ND	"	
Trichloroethene	"	"	"		0.500	ND	"	
Trichlorofluoromethane	"	"	"		0.500	ND	"	
Vinyl chloride	"	"	"		1.00	ND	"	
<i>Surrogate: 4-BFB</i>	"	"	"	70.0-130		115	%	





Blaine Tech Services 1680 Rogers Avenue San Jose, CA 95112	Project: Chevron(5) Project Number: Chevron 206265, 990415-J1 Project Manager: Christine Lillie	Sampled: 4/15/99 Received: 4/16/99 Reported: 5/12/99
--	---	--

Sample Description: MW10
Laboratory Sample Number: L904200-04

Analyte	Batch Number	Date Prepared	Date Analyzed	Specific Method/ Surrogate Limits	Reporting Limit	Result	Units	Notes*
---------	--------------	---------------	---------------	--------------------------------------	-----------------	--------	-------	--------

Sequoia Analytical - San Carlos

Total Purgeable Hydrocarbons (C6-C12), BTEX and MTBE by DHS LUFT

Purgeable Hydrocarbons as Gasoline	9040105	4/21/99	4/21/99		50.0	ND	ug/l	
Benzene	"	"	"		0.500	ND	"	
Toluene	"	"	"		0.500	ND	"	
Ethylbenzene	"	"	"		0.500	ND	"	
Xylenes (total)	"	"	"		0.500	ND	"	
Methyl tert-butyl ether	"	"	"		5.00	9.45	"	
Surrogate: a,a,a-Trifluorotoluene	"	"	"	70.0-130		86.0	%	

Volatile Organic Compounds by EPA Method 8010B

Bromodichloromethane	9040141	4/29/99	4/29/99		0.500	ND	ug/l	
Bromoform	"	"	"		0.500	ND	"	
Bromomethane	"	"	"		1.00	ND	"	
Carbon tetrachloride	"	"	"		0.500	ND	"	
Chlorobenzene	"	"	"		0.500	ND	"	
Chloroethane	"	"	"		1.00	ND	"	
2-Chloroethylvinyl ether	"	"	"		1.00	ND	"	
Chloroform	"	"	"		0.500	ND	"	
Chloromethane	"	"	"		1.00	ND	"	
Dibromochloromethane	"	"	"		0.500	ND	"	
1,3-Dichlorobenzene	"	"	"		0.500	ND	"	
1,4-Dichlorobenzene	"	"	"		0.500	ND	"	
1,2-Dichlorobenzene	"	"	"		0.500	ND	"	
1,1-Dichloroethane	"	"	"		0.500	0.603	"	
1,2-Dichloroethane	"	"	"		0.500	ND	"	
1,1-Dichloroethene	"	"	"		0.500	ND	"	
cis-1,2-Dichloroethene	"	"	"		0.500	19.1	"	3
trans-1,2-Dichloroethene	"	"	"		0.500	8.32	"	4
1,2-Dichloropropane	"	"	"		0.500	ND	"	
cis-1,3-Dichloropropene	"	"	"		0.500	ND	"	
trans-1,3-Dichloropropene	"	"	"		0.500	ND	"	
Methylene chloride	"	"	"		5.00	ND	"	
1,1,1,2-Tetrachloroethane	"	"	"		0.500	ND	"	
Tetrachloroethene	"	"	"		0.500	ND	"	
1,1,1-Trichloroethane	"	"	"		0.500	ND	"	
1,1,2-Trichloroethane	"	"	"		0.500	ND	"	
Trichloroethene	"	"	"		0.500	11.3	"	5
Trichlorofluoromethane	"	"	"		0.500	ND	"	
Vinyl chloride	"	"	"		1.00	ND	"	
Surrogate: 4-BFB	"	"	"	70.0-130		115	%	





Blaine Tech Services 1680 Rogers Avenue San Jose, CA 95112	Project: Chevron(S) Project Number: Chevron 206265, 990415-J1 Project Manager: Christine Lillie	Sampled: 4/15/99 Received: 4/16/99 Reported: 5/12/99
--	---	--

Sample Description: MW11
Laboratory Sample Number: L904200-05

Analyte	Batch Number	Date Prepared	Date Analyzed	Specific Method/ Surrogate Limits	Reporting Limit	Result	Units	Notes*
---------	--------------	---------------	---------------	--------------------------------------	-----------------	--------	-------	--------

Sequoia Analytical - San Carlos

Total Purgeable Hydrocarbons (C6-C12), BTEX and MTBE by DHS LUFT

Purgeable Hydrocarbons as Gasoline	9040133	4/27/99	4/27/99		50.0	ND	ug/l	
Benzene	"	"	"		0.500	ND	"	
Toluene	"	"	"		0.500	ND	"	
Ethylbenzene	"	"	"		0.500	ND	"	
Xylenes (total)	"	"	"		0.500	ND	"	
Methyl tert-butyl ether	"	"	"		5.00	ND	"	
Surrogate: a,a,a-Trifluorotoluene	"	"	"	70.0-130		89.3	%	

Volatile Organic Compounds by EPA Method 8010B

Bromodichloromethane	9040141	4/29/99	4/29/99		0.500	ND	ug/l	
Bromoform	"	"	"		0.500	ND	"	
Bromomethane	"	"	"		1.00	ND	"	
Carbon tetrachloride	"	"	"		0.500	ND	"	
Chlorobenzene	"	"	"		0.500	ND	"	
Chloroethane	"	"	"		1.00	ND	"	
2-Chloroethylvinyl ether	"	"	"		1.00	ND	"	
Chloroform	"	"	"		0.500	ND	"	
Chloromethane	"	"	"		1.00	ND	"	
Dibromochloromethane	"	"	"		0.500	ND	"	
1,3-Dichlorobenzene	"	"	"		0.500	ND	"	
1,4-Dichlorobenzene	"	"	"		0.500	ND	"	
1,2-Dichlorobenzene	"	"	"		0.500	ND	"	
1,1-Dichloroethane	"	"	"		0.500	ND	"	
1,2-Dichloroethane	"	"	"		0.500	ND	"	
1,1-Dichloroethene	"	"	"		0.500	ND	"	
cis-1,2-Dichloroethene	"	"	"		0.500	10.1	"	3
trans-1,2-Dichloroethene	"	"	"		0.500	3.29	"	4
1,2-Dichloropropane	"	"	"		0.500	ND	"	
cis-1,3-Dichloropropene	"	"	"		0.500	ND	"	
trans-1,3-Dichloropropene	"	"	"		0.500	ND	"	
Methylene chloride	"	"	"		5.00	ND	"	
1,1,1,2-Tetrachloroethane	"	"	"		0.500	ND	"	
Tetrachloroethene	"	"	"		0.500	ND	"	
1,1,1-Trichloroethane	"	"	"		0.500	ND	"	
1,1,2-Trichloroethane	"	"	"		0.500	ND	"	
Trichloroethene	"	"	"		0.500	2.87	"	5
Trichlorofluoromethane	"	"	"		0.500	ND	"	
Vinyl chloride	"	"	"		1.00	ND	"	
Surrogate: 4-BFB	"	"	"	70.0-130		112	%	





Blaine Tech Services 1680 Rogers Avenue San Jose, CA 95112	Project: Chevron(5) Project Number: Chevron 206265, 990415-J1 Project Manager: Christine Lillie	Sampled: 4/15/99 Received: 4/16/99 Reported: 5/12/99
--	---	--

Sample Description: MW18
Laboratory Sample Number: L904200-07

Analyte	Batch Number	Date Prepared	Date Analyzed	Specific Method/ Surrogate Limits	Reporting Limit	Result	Units	Notes*
---------	--------------	---------------	---------------	--------------------------------------	-----------------	--------	-------	--------

Sequoia Analytical - San Carlos

Total Purgeable Hydrocarbons (C6-C12), BTEX and MTBE by DHS LUFT

Purgeable Hydrocarbons as Gasoline	9040105	4/21/99	4/21/99		50.0	ND	ug/l	
Benzene	"	"	"		0.500	ND	"	
Toluene	"	"	"		0.500	ND	"	
Ethylbenzene	"	"	"		0.500	ND	"	
Xylenes (total)	"	"	"		0.500	ND	"	
Methyl tert-butyl ether	"	"	"		5.00	ND	"	
<i>Surrogate: a,a,a-Trifluorotoluene</i>	"	"	"	70.0-130		98.0	%	

Volatile Organic Compounds by EPA Method 8010B

Bromodichloromethane	9040141	4/29/99	4/29/99		0.625	ND	ug/l	
Bromoform	"	"	"		0.625	ND	"	
Bromomethane	"	"	"		1.25	ND	"	
Carbon tetrachloride	"	"	"		0.625	ND	"	
Chlorobenzene	"	"	"		0.625	ND	"	
Chloroethane	"	"	"		1.25	ND	"	
2-Chloroethylvinyl ether	"	"	"		1.25	ND	"	
Chloroform	"	"	"		0.625	0.908	"	
Chloromethane	"	"	"		1.25	ND	"	
Dibromochloromethane	"	"	"		0.625	ND	"	
1,3-Dichlorobenzene	"	"	"		0.625	ND	"	
1,4-Dichlorobenzene	"	"	"		0.625	ND	"	
1,2-Dichlorobenzene	"	"	"		0.625	ND	"	
1,1-Dichloroethane	"	"	"		0.625	ND	"	
1,2-Dichloroethane	"	"	"		0.625	ND	"	
1,1-Dichloroethene	"	"	"		0.625	ND	"	
cis-1,2-Dichloroethene	"	"	"		0.625	3.45	"	
trans-1,2-Dichloroethene	"	"	"		0.625	1.78	"	6
1,2-Dichloropropane	"	"	"		0.625	ND	"	
cis-1,3-Dichloropropene	"	"	"		0.625	ND	"	
trans-1,3-Dichloropropene	"	"	"		0.625	ND	"	
Methylene chloride	"	"	"		6.25	ND	"	
1,1,1,2-Tetrachloroethane	"	"	"		0.625	ND	"	
Tetrachloroethene	"	"	"		0.625	14.5	"	
1,1,1-Trichloroethane	"	"	"		0.625	2.29	"	
1,1,2-Trichloroethane	"	"	"		0.625	ND	"	
Trichloroethene	"	"	"		0.625	27.4	"	6
Trichlorofluoromethane	"	"	"		0.625	ND	"	
Vinyl chloride	"	"	"		1.25	ND	"	
<i>Surrogate: 4-BFB</i>	"	"	"	70.0-130		115	%	





Blaine Tech Services 1680 Rogers Avenue San Jose, CA 95112	Project: Chevron(5) Project Number: Chevron 206265, 990415-J1 Project Manager: Christine Lillie	Sampled: 4/15/99 Received: 4/16/99 Reported: 5/12/99
--	---	--

Sample Description: TB
Laboratory Sample Number: L904200-08

Analyte	Batch Number	Date Prepared	Date Analyzed	Specific Method/ Surrogate Limits	Reporting Limit	Result	Units	Notes*
---------	--------------	---------------	---------------	--------------------------------------	-----------------	--------	-------	--------

Sequoia Analytical - San Carlos

Total Purgeable Hydrocarbons (C6-C12), BTEX and MTBE by DHS LUFT

Purgeable Hydrocarbons as Gasoline	9040105	4/21/99	4/21/99		50.0	ND	ug/l	
Benzene	"	"	"		0.500	ND	"	
Toluene	"	"	"		0.500	ND	"	
Ethylbenzene	"	"	"		0.500	ND	"	
Xylenes (total)	"	"	"		0.500	ND	"	
Methyl tert-butyl ether	"	"	"		5.00	ND	"	
<i>Surrogate: a,a,a-Trifluorotoluene</i>	"	"	"	70.0-130		79.9	%	





Blaine Tech Services 1680 Rogers Avenue San Jose, CA 95112	Project: Chevron(5) Project Number: Chevron 206265, 990415-J1 Project Manager: Christine Lillie	Sampled: 4/15/99 Received: 4/16/99 Reported: 5/12/99
--	---	--

Total Purgeable Hydrocarbons (C6-C12), BTEX and MTBE by DHS LUFT/Quality Control
Sequoia Analytical - San Carlos

Analyte	Date Analyzed	Spike Level	Sample Result	QC Result	Units	Reporting Limit Recov. Limits	Recov. %	RPD Limit	RPD %	Notes*
Batch: 9040105			Date Prepared: 4/21/99			Extraction Method: EPA 5030B [P/T]				
Blank			9040105-BLK1							
Purgeable Hydrocarbons as Gasoline	4/21/99			ND	ug/l	50.0				
Benzene	"			ND	"	0.500				
Toluene	"			ND	"	0.500				
Ethylbenzene	"			ND	"	0.500				
Xylenes (total)	"			ND	"	0.500				
Methyl tert-butyl ether	"			ND	"	5.00				
Surrogate: a,a,a-Trifluorotoluene	"	10.0		9.18	"	70.0-130	91.8			
LCS			9040105-BS1							
Purgeable Hydrocarbons as Gasoline	4/21/99	250		234	ug/l	70.0-130	93.6			
Surrogate: a,a,a-Trifluorotoluene	"	10.0		8.90	"	70.0-130	89.0			
Matrix Spike			9040105-MS1 L904240-01							
Purgeable Hydrocarbons as Gasoline	4/21/99	250	ND	252	ug/l	60.0-140	101			
Surrogate: a,a,a-Trifluorotoluene	"	10.0		9.23	"	70.0-130	92.3			
Matrix Spike Dup			9040105-MSD1 L904240-01							
Purgeable Hydrocarbons as Gasoline	4/21/99	250	ND	245	ug/l	60.0-140	98.0	25.0	3.02	
Surrogate: a,a,a-Trifluorotoluene	"	10.0		8.62	"	70.0-130	86.2			
Batch: 9040133			Date Prepared: 4/27/99			Extraction Method: EPA 5030B [P/T]				
Blank			9040133-BLK1							
Purgeable Hydrocarbons as Gasoline	4/27/99			ND	ug/l	50.0				
Benzene	"			ND	"	0.500				
Toluene	"			ND	"	0.500				
Ethylbenzene	"			ND	"	0.500				
Xylenes (total)	"			ND	"	0.500				
Methyl tert-butyl ether	"			ND	"	5.00				
Surrogate: a,a,a-Trifluorotoluene	"	10.0		9.13	"	70.0-130	91.3			
LCS			9040133-BS1							
Purgeable Hydrocarbons as Gasoline	4/27/99	250		221	ug/l	70.0-130	88.4			
Surrogate: a,a,a-Trifluorotoluene	"	10.0		8.28	"	70.0-130	82.8			
Matrix Spike			9040133-MS1 L904200-05							
Purgeable Hydrocarbons as Gasoline	4/27/99	250	ND	221	ug/l	60.0-140	88.4			
Surrogate: a,a,a-Trifluorotoluene	"	10.0		9.83	"	70.0-130	98.3			
Matrix Spike Dup			9040133-MSD1 L904200-05							
Purgeable Hydrocarbons as Gasoline	4/27/99	250	ND	215	ug/l	60.0-140	86.0	25.0	2.75	





Blaine Tech Services 1680 Rogers Avenue San Jose, CA 95112	Project: Chevron(5) Project Number: Chevron 206265, 990415-J1 Project Manager: Christine Lillie	Sampled: 4/15/99 Received: 4/16/99 Reported: 5/12/99
--	---	--

Total Purgeable Hydrocarbons (C6-C12), BTEX and MTBE by DHS LUFT/Quality Control
Sequoia Analytical - San Carlos

Analyte	Date Analyzed	Spike Level	Sample Result	QC Result	Units	Reporting Limit Recov. Limits	Recov. %	RPD Limit	RPD %	Notes*
---------	---------------	-------------	---------------	-----------	-------	----------------------------------	----------	-----------	-------	--------

Matrix Spike Dup (continued)	9040133-MSD1	L904200-05								
<i>Surrogate: a,a,a-Trifluorotoluene</i>	4/27/99	10.0		9.45	ug/l	70.0-130	94.5			





Blaine Tech Services 1680 Rogers Avenue San Jose, CA 95112	Project: Chevron(5) Project Number: Chevron 206265, 990415-J1 Project Manager: Christine Lillie	Sampled: 4/15/99 Received: 4/16/99 Reported: 5/12/99
--	---	--

Volatile Organic Compounds by EPA Method 8010B/Quality Control
Sequoia Analytical - San Carlos

Analyte	Date Analyzed	Spike Level	Sample Result	QC Result	Reporting Limit Units	Recov. Limits	Recov. %	RPD Limit	RPD %	Notes*
---------	---------------	-------------	---------------	-----------	-----------------------	---------------	----------	-----------	-------	--------

Batch: 9040129

Date Prepared: 4/27/99

Extraction Method: EPA 5030B (P/T)

Blank

9040129-BLK1

Bromodichloromethane	4/27/99			ND	ug/l	0.500				
Bromoform	"			ND	"	0.500				
Bromomethane	"			ND	"	1.00				
Carbon tetrachloride	"			ND	"	0.500				
Chlorobenzene	"			ND	"	0.500				
Chloroethane	"			ND	"	1.00				
2-Chloroethylvinyl ether	"			ND	"	1.00				
Chloroform	"			ND	"	0.500				
Chloromethane	"			ND	"	1.00				
Dibromochloromethane	"			ND	"	0.500				
1,3-Dichlorobenzene	"			ND	"	0.500				
1,4-Dichlorobenzene	"			ND	"	0.500				
1,2-Dichlorobenzene	"			ND	"	0.500				
1,1-Dichloroethane	"			ND	"	0.500				
1,2-Dichloroethane	"			ND	"	0.500				
1,1-Dichloroethene	"			ND	"	0.500				
cis-1,2-Dichloroethene	"			ND	"	0.500				
trans-1,2-Dichloroethene	"			ND	"	0.500				
1,2-Dichloropropane	"			ND	"	0.500				
cis-1,3-Dichloropropene	"			ND	"	0.500				
trans-1,3-Dichloropropene	"			ND	"	0.500				
Methylene chloride	"			ND	"	5.00				
1,1,1,2-Tetrachloroethane	"			ND	"	0.500				
Tetrachloroethene	"			ND	"	0.500				
1,1,1-Trichloroethane	"			ND	"	0.500				
1,1,2-Trichloroethane	"			ND	"	0.500				
Trichloroethene	"			ND	"	0.500				
Trichlorofluoromethane	"			ND	"	0.500				
Vinyl chloride	"			ND	"	1.00				
Surrogate: 4-BFB	"	10.0		7.38	"	70.0-130	73.8			

Blank

9040129-BLK2

Freon 113	4/28/99			ND	ug/l	0.500				
Bromodichloromethane	"			ND	"	0.500				
Bromoform	"			ND	"	0.500				
Bromomethane	"			ND	"	1.00				
Carbon tetrachloride	"			ND	"	0.500				
Chlorobenzene	"			ND	"	0.500				
Chloroethane	"			ND	"	1.00				
2-Chloroethylvinyl ether	"			ND	"	1.00				





Blaine Tech Services
1680 Rogers Avenue
San Jose, CA 95112

Project: Chevron(5)
Project Number: Chevron 206265, 990415-J1
Project Manager: Christine Lillie

Sampled: 4/15/99
Received: 4/16/99
Reported: 5/12/99

Volatile Organic Compounds by EPA Method 8010B/Quality Control
Sequoia Analytical - San Carlos

Analyte	Date Analyzed	Spike Level	Sample Result	QC Result	Units	Reporting Limit Recov. Limits	Recov. %	RPD Limit	RPD %	Notes*
Blank (continued)										
9040129-BLK2										
Chloroform	4/28/99			ND	ug/l	0.500				
Chloromethane	"			ND	"	1.00				
Dibromochloromethane	"			ND	"	0.500				
1,3-Dichlorobenzene	"			ND	"	0.500				
1,4-Dichlorobenzene	"			ND	"	0.500				
1,2-Dichlorobenzene	"			ND	"	0.500				
1,1-Dichloroethane	"			ND	"	0.500				
1,2-Dichloroethane	"			ND	"	0.500				
1,1-Dichloroethene	"			ND	"	0.500				
cis-1,2-Dichloroethene	"			ND	"	0.500				
trans-1,2-Dichloroethene	"			ND	"	0.500				
1,2-Dichloropropane	"			ND	"	0.500				
cis-1,3-Dichloropropene	"			ND	"	0.500				
trans-1,3-Dichloropropene	"			ND	"	0.500				
Methylene chloride	"			ND	"	5.00				
1,1,1,2-Tetrachloroethane	"			ND	"	0.500				
Tetrachloroethene	"			ND	"	0.500				
1,1,1-Trichloroethane	"			ND	"	0.500				
1,1,2-Trichloroethane	"			ND	"	0.500				
Trichloroethene	"			ND	"	0.500				
Trichlorofluoromethane	"			ND	"	0.500				
Vinyl chloride	"			ND	"	1.00				
<i>Surrogate: 4-BFB</i>	"	10.0		9.08	"	70.0-130	90.8			
LCS										
9040129-BS1										
Chlorobenzene	4/27/99	10.0		9.49	ug/l	70.0-130	94.9			
1,1-Dichloroethene	"	10.0		11.1	"	65.0-135	111			
Trichloroethene	"	10.0		11.1	"	70.0-130	111			
<i>Surrogate: 4-BFB</i>	"	10.0		7.42	"	70.0-130	74.2			
LCS										
9040129-BS2										
Chlorobenzene	4/28/99	10.0		10.2	ug/l	70.0-130	102			
1,1-Dichloroethene	"	10.0		11.0	"	65.0-135	110			
Trichloroethene	"	10.0		10.3	"	70.0-130	103			
<i>Surrogate: 4-BFB</i>	"	10.0		10.2	"	70.0-130	102			
Matrix Spike										
9040129-MS1 L904319-03										
Chlorobenzene	4/27/99	10.0	ND	7.89	ug/l	60.0-140	78.9			
1,1-Dichloroethene	"	10.0	ND	9.71	"	60.0-140	97.1			
Trichloroethene	"	10.0	ND	10.2	"	60.0-140	102			
<i>Surrogate: 4-BFB</i>	"	10.0		7.08	"	70.0-130	70.8			





Blaine Tech Services 1680 Rogers Avenue San Jose, CA 95112	Project: Chevron(5) Project Number: Chevron 206265, 990415-J1 Project Manager: Christine Lillie	Sampled: 4/15/99 Received: 4/16/99 Reported: 5/12/99
--	---	--

**Volatile Organic Compounds by EPA Method 8010B/Quality Control
Sequoia Analytical - San Carlos**

Analyte	Date Analyzed	Spike Level	Sample Result	QC Result	Units	Reporting Limit Recov. Limits	Recov. %	RPD Limit	RPD %	Notes*
Matrix Spike Dup	9040129-MSD1	L904319-03								
Chlorobenzene	4/27/99	10.0	ND	7.24	ug/l	60.0-140	72.4	25.0	8.59	
1,1-Dichloroethene	"	10.0	ND	9.49	"	60.0-140	94.9	25.0	2.29	
Trichloroethene	"	10.0	ND	9.63	"	60.0-140	96.3	25.0	5.75	
Surrogate: 4-BFB	"	10.0		7.07	"	70.0-130	70.7			

Batch: 9040141

Date Prepared: 4/28/99

Extraction Method: EPA 5030B [P/T]

Blank

9040141-BLK1

Bromodichloromethane	4/28/99		ND	ug/l	0.500
Bromoform	"		ND	"	0.500
Bromomethane	"		ND	"	1.00
Carbon tetrachloride	"		ND	"	0.500
Chlorobenzene	"		ND	"	0.500
Chloroethane	"		ND	"	1.00
2-Chloroethylvinyl ether	"		ND	"	1.00
Chloroform	"		ND	"	0.500
Chloromethane	"		ND	"	1.00
Dibromochloromethane	"		ND	"	0.500
1,3-Dichlorobenzene	"		ND	"	0.500
1,4-Dichlorobenzene	"		ND	"	0.500
1,2-Dichlorobenzene	"		ND	"	0.500
1,1-Dichloroethane	"		ND	"	0.500
1,2-Dichloroethane	"		ND	"	0.500
1,1-Dichloroethene	"		ND	"	0.500
cis-1,2-Dichloroethene	"		ND	"	0.500
trans-1,2-Dichloroethene	"		ND	"	0.500
1,2-Dichloropropane	"		ND	"	0.500
cis-1,3-Dichloropropene	"		ND	"	0.500
trans-1,3-Dichloropropene	"		ND	"	0.500
Methylene chloride	"		ND	"	5.00
1,1,1,2-Tetrachloroethane	"		ND	"	0.500
Tetrachloroethene	"		ND	"	0.500
1,1,1-Trichloroethane	"		ND	"	0.500
1,1,2-Trichloroethane	"		ND	"	0.500
Trichloroethene	"		ND	"	0.500
Trichlorofluoromethane	"		ND	"	0.500
Vinyl chloride	"		ND	"	1.00
Surrogate: 4-BFB	"	10.0	9.08	"	70.0-130 90.8

Blank

9040141-BLK2

Bromodichloromethane	4/29/99		ND	ug/l	0.500
Bromoform	"		ND	"	0.500





Blaine Tech Services 1680 Rogers Avenue San Jose, CA 95112	Project: Chevron(5) Project Number: Chevron 206265, 990415-J1 Project Manager: Christine Lillie	Sampled: 4/15/99 Received: 4/16/99 Reported: 5/12/99
--	---	--

Volatile Organic Compounds by EPA Method 8010B/Quality Control
Sequoia Analytical - San Carlos

Analyte	Date Analyzed	Spike Level	Sample Result	QC Result	Units	Reporting Limit Recov. Limits	Recov. %	RPD Limit	RPD %	Notes*
Blank (continued)	9040141-BLK2									
Bromomethane	4/29/99			ND	ug/l	1.00				
Carbon tetrachloride	"			ND	"	0.500				
Chlorobenzene	"			ND	"	0.500				
Chloroethane	"			ND	"	1.00				
2-Chloroethylvinyl ether	"			ND	"	1.00				
Chloroform	"			ND	"	0.500				
Chloromethane	"			ND	"	1.00				
Dibromochloromethane	"			ND	"	0.500				
1,3-Dichlorobenzene	"			ND	"	0.500				
1,4-Dichlorobenzene	"			ND	"	0.500				
1,2-Dichlorobenzene	"			ND	"	0.500				
1,1-Dichloroethane	"			ND	"	0.500				
1,2-Dichloroethane	"			ND	"	0.500				
1,1-Dichloroethene	"			ND	"	0.500				
cis-1,2-Dichloroethene	"			ND	"	0.500				
trans-1,2-Dichloroethene	"			ND	"	0.500				
1,2-Dichloropropane	"			ND	"	0.500				
cis-1,3-Dichloropropene	"			ND	"	0.500				
trans-1,3-Dichloropropene	"			ND	"	0.500				
Methylene chloride	"			ND	"	5.00				
1,1,1,2-Tetrachloroethane	"			ND	"	0.500				
Tetrachloroethene	"			ND	"	0.500				
1,1,1-Trichloroethane	"			ND	"	0.500				
1,1,2-Trichloroethane	"			ND	"	0.500				
Trichloroethene	"			ND	"	0.500				
Trichlorofluoromethane	"			ND	"	0.500				
Vinyl chloride	"			ND	"	1.00				
<i>Surrogate: 4-BFB</i>	"	10.0		7.14	"	70.0-130	71.4			
LCS	9040141-BS1									
Chlorobenzene	4/28/99	10.0		10.2	ug/l	70.0-130	102			
1,1-Dichloroethene	"	10.0		11.0	"	65.0-135	110			
Trichloroethene	"	10.0		10.3	"	70.0-130	103			
<i>Surrogate: 4-BFB</i>	"	10.0		10.2	"	70.0-130	102			
LCS	9040141-BS2									
Chlorobenzene	4/29/99	10.0		10.5	ug/l	70.0-130	105			
1,1-Dichloroethene	"	10.0		12.1	"	65.0-135	121			
Trichloroethene	"	10.0		11.6	"	70.0-130	116			
<i>Surrogate: 4-BFB</i>	"	10.0		11.2	"	70.0-130	112			





Blaine Tech Services 1680 Rogers Avenue San Jose, CA 95112	Project: Chevron(5) Project Number: Chevron 206265, 990415-J1 Project Manager: Christine Lillie	Sampled: 4/15/99 Received: 4/16/99 Reported: 5/12/99
--	---	--

Volatile Organic Compounds by EPA Method 8010B/Quality Control
Sequoia Analytical - San Carlos

Analyte	Date Analyzed	Spike Level	Sample Result	QC Result	Units	Reporting Limit Recov. Limits	Recov. %	RPD Limit	RPD %	Notes*
Matrix Spike		9040141-MS1	L904200-03							
Chlorobenzene	4/29/99	10.0	ND	11.8	ug/l	60.0-140	118			
1,1-Dichloroethene	"	10.0	ND	12.7	"	60.0-140	127			
Trichloroethene	"	10.0	ND	11.6	"	60.0-140	116			
Surrogate: 4-BFB	"	10.0		11.2	"	70.0-130	112			
Matrix Spike Dup		9040141-MSD1	L904200-03							
Chlorobenzene	4/29/99	10.0	ND	11.6	ug/l	60.0-140	116	25.0	1.71	
1,1-Dichloroethene	"	10.0	ND	12.1	"	60.0-140	121	25.0	4.84	
Trichloroethene	"	10.0	ND	12.3	"	60.0-140	123	25.0	5.86	
Surrogate: 4-BFB	"	10.0		11.5	"	70.0-130	115			





Blaine Tech Services
1680 Rogers Avenue
San Jose, CA 95112

Project: Chevron(5)
Project Number: Chevron 206265, 990415-J1
Project Manager: Christine Lillie

Sampled: 4/15/99
Received: 4/16/99
Reported: 5/12/99

Notes and Definitions

#	Note
1	Chromatogram Pattern: Gasoline C6-C12
2	Sample was diluted 2.5 times due to late-eluting compounds.
3	Cis -1,2-dichloroethene recovery in the opening standard exceeded the QC limit by 3%.
4	Trans-1,2-dichloroethene recovery in the opening standard exceeded the QC limit by 2%.
5	Trichloroethene recovery in the closing standard exceeded the QC limit by 1%.
6	Trichloroethene and trans-1,2-dichloroethene recoveries exceeded the QC limit by 1% and 2%, respectively.
DET	Analyte DETECTED
ND	Analyte NOT DETECTED at or above the reporting limit
NR	Not Reported
dry	Sample results reported on a dry weight basis
Recov.	Recovery
RPD	Relative Percent Difference



Field Data Sheets

CHEVRON WELL MONITORING DATA SHEET

Project #: 990415-J1	Station #: 206265
Sampler: Jon P	Date: 4-15-99
Well I.D.: MW2A	Well Diameter: (2) 3 4 6 8
Total Well Depth: 14.64	Depth to Water: 2.62
Depth to Free Product:	Thickness of Free Product (feet):
Referenced to: (PVC) Grade	D.O. Meter (if req'd): YSI HACH

Well Diameter	Multiplier	Well Diameter	Multiplier
2"	0.16	5"	1.02
3"	0.37	6"	1.47
4"	0.65	Other	radius ² * 0.163

Purge Method: Bailer
 Disposable Bailer
 Middleburg
 Electric Submersible
 Extraction Pump

Other: _____

Sampling Method: Bailer
 Disposable Bailer
 Extraction Port
 Other: _____

<u>1.9</u>	\times	<u>3</u>	$=$	<u>5.7</u> Gals.
1 Case Volume (Gals.)		Specified Volumes		Calculated Volume

Time	Temp (°F)	pH	Cond.	Gals. Removed	Observations
1600	64.2		210	2	odor / suspended particles
1603	63.6		210	4	↓
1606	63.4		280	6	sheen

Did well dewater? Yes No Gallons actually evacuated: 6

Sampling Time: 1610 Sampling Date: _____

Sample I.D.: MW2A Laboratory: (Sequoia) CORE N. Creek Assoc. Labs

Analyzed for: (TPH-G BTEX MTBE) TPH-D Other: 8010

Duplicate I.D.: _____ Analyzed for: TPH-G BTEX MTBE TPH-D Other: _____

D.O. (if req'd):	Pre-purge:	mg/L	Post-purge:	mg/L
O.R.P. (if req'd):	Pre-purge:	mV	Post-purge:	mV

CHEVRON WELL MONITORING DATA SHEET

Project #: 990415-J1	Station #: 206265
Sampler: Jon P	Date: 4-15-99
Well I.D.: MW7	Well Diameter: 2 (3) 4 6 8
Total Well Depth: 10.03	Depth to Water: 4.40
Depth to Free Product:	Thickness of Free Product (feet):
Referenced to: (PVC) Grade	D.O. Meter (if req'd): YSI HACH

Well Diameter	Multiplier	Well Diameter	Multiplier
2"	0.16	5"	1.02
3"	0.37	6"	1.47
4"	0.65	Other	radius ² * 0.163

Purge Method: Bailer Sampling Method: Bailer

Disposable Bailer Disposable Bailer

Middleburg Extraction Port

Electric Submersible Other: _____

Extraction Pump

Other: _____

2.0	x	3	=	6	Gals.
1 Case Volume (Gals.)		Specified Volumes		Calculated Volume	

Time	Temp (°F)	pH	Cond.	Gals. Removed	Observations
1232	63.8		600	2	
1238	63.6		600	4	
1238	63.2		600	6	

Did well dewater? Yes No Gallons actually evacuated: 6

Sampling Time: 1245 Sampling Date: 4-15-99

Sample I.D.: MW7 Laboratory: (Sequoia) CORE N. Creek Assoc. Labs

Analyzed for: (TPH-G BTEX MTBE) TPH-D Other: 8010

Duplicate I.D.: Analyzed for: TPH-G BTEX MTBE TPH-D Other:

D.O. (if req'd):	Pre-purge:	mg/L	Post-purge:	mg/L
O.R.P. (if req'd):	Pre-purge:	mV	Post-purge:	mV

CHEVRON WELL MONITORING DATA SHEET

Project #: 990415-51	Station #: 206265
Sampler: Jon P	Date: 4-15-99
Well I.D.: MW8	Well Diameter: 2 (3) 4 6 8
Total Well Depth: 16.00	Depth to Water: 5.25
Depth to Free Product:	Thickness of Free Product (feet):
Referenced to: (PVC) Grade	D.O. Meter (if req'd): YSI HACH

Well Diameter	Multiplier	Well Diameter	Multiplier
2"	0.16	5"	1.02
3"	0.37	6"	1.47
4"	0.65	Other	radius ² * 0.163

Purge Method: Bailer Sampling Method: Bailer
 Disposable Bailer Disposable Bailer
 Middleburg Extraction Port
 Electric Submersible Other: _____
 Extraction Pump

3.9	x	3	=	11.9	Gals.
1 Case Volume (Gals.)		Specified Volumes		Calculated Volume	

Time	Temp (°F)	pH	Cond.	Gals. Removed	Observations
1308	61.4		460	4	
1313	61.6		520	8	
1318	62.0		530	12	

Did well dewater? Yes No Gallons actually evacuated: 12

Sampling Time: 1323 Sampling Date: 4-15-99

Sample I.D.: MW8 Laboratory: (Sequoia) CORE N. Creek Assoc. Labs

Analyzed for: (TPH-G BTEX MTBE) TPH-D Other: 8010

Duplicate I.D.: Analyzed for: TPH-G BTEX MTBE TPH-D Other:

D.O. (if req'd):	Pre-purge:	mg/L	Post-purge:	mg/L
O.R.P. (if req'd):	Pre-purge:	mV	Post-purge:	mV

CHEVRON WELL MONITORING DATA SHEET

Project #: 990415-21	Station #: 206265
Sampler: Jon P	Date: 4-15-99
Well I.D.: MW10	Well Diameter: 2 3 <u>4</u> 6 8
Total Well Depth: 20.35	Depth to Water: 4.55
Depth to Free Product:	Thickness of Free Product (feet):
Referenced to: <u>PVC</u> Grade	D.O. Meter (if req'd): YSI HACH

Well Diameter	Multiplier	Well Diameter	Multiplier
2"	0.16	5"	1.02
3"	0.37	6"	1.47
4"	0.65	Other	radius ² * 0.163

Purge Method: Bailer
 Disposable Bailer
 Middleburg
 Electric Submersible
 Extraction Pump

Sampling Method: Bailer
Disposable Bailer
 Extraction Port
 Other: _____

Other: _____

10.2	x	3	=	30.8	Gals.
1 Case Volume (Gals.)		Specified Volumes		Calculated Volume	

Time	Temp (°F)	pH	Cond.	Gals. Removed	Observations
1342	62.6		500	11	
1344	63.6		530	21	
1346	63.6		550	31	

Did well dewater? Yes No Gallons actually evacuated: 31

Sampling Time: 1352 Sampling Date: 4-15-99

Sample I.D.: MW10 Laboratory: Sequoia CORE N. Creek Assoc. Labs

Analyzed for: TPH-G BTEX MTBE TPH-D Other: 8010

Duplicate I.D.: Analyzed for: TPH-G BTEX MTBE TPH-D Other:

D.O. (if req'd):	Pre-purge:	mg/L	Post-purge:	mg/L
O.R.P. (if req'd):	Pre-purge:	mV	Post-purge:	mV

CHEVRON WELL MONITORING DATA SHEET

Project #: 990415-J1	Station #: 206265
Sampler: Jon P	Date: 4-15-99
Well I.D.: MW11	Well Diameter: 2 3 <u>4</u> 6 8
Total Well Depth: 17.90	Depth to Water: 5.00
Depth to Free Product:	Thickness of Free Product (feet):
Referenced to: <u>PVC</u> Grade	D.O. Meter (if req'd): YSI HACH

Well Diameter	Multiplier	Well Diameter	Multiplier
2"	0.16	5"	1.02
3"	0.37	6"	1.47
4"	0.65	Other	radius ² * 0.163

Purge Method: Bailer
 Disposable Bailer
 Middleburg
Electric Submersible
 Extraction Pump

Sampling Method: Bailer
Disposable Bailer
 Extraction Port
 Other: _____

Other: _____

8.3	X	3	=	25.1	Gals.
1 Case Volume (Gals.)		Specified Volumes		Calculated Volume	

Time	Temp (°F)	pH	Cond.	Gals. Removed	Observations
1536	66.4		560	9	
1537	65.2		600	17	
1538	65.6		620	26	

Did well dewater? Yes No Gallons actually evacuated: 26

Sampling Time: 1545 Sampling Date: _____

Sample I.D.: MW11 Laboratory: Sequoia CORE N. Creek Assoc. Labs

Analyzed for: TPH-G BTEX MTBE TPH-D Other: 8010

Duplicate I.D.: _____ Analyzed for: TPH-G BTEX MTBE TPH-D Other: _____

D.O. (if req'd):	Pre-purge:	mg/L	Post-purge:	mg/L
O.R.P. (if req'd):	Pre-purge:	mV	Post-purge:	mV

CHEVRON WELL MONITORING DATA SHEET

Project #: 990415-51	Station #: 206265
Sampler: Jon P	Date: 4-15-99
Well I.D.: MW13	Well Diameter: 2 3 4 6 8 <u> </u>
Total Well Depth:	Depth to Water:
Depth to Free Product:	Thickness of Free Product (feet):
Referenced to: <u>PVC</u> Grade	D.O. Meter (if req'd): YSI HACH

Well Diameter	Multiplier	Well Diameter	Multiplier
2"	0.16	5"	1.02
3"	0.37	6"	1.47
4"	0.65	Other	radius ² * 0.163

Purge Method: Bailer
 Disposable Bailer
 Middleburg
 Electric Submersible
 Extraction Pump
 Other: _____

Sampling Method: ~~Bailer~~
Disposable Bailer
~~Extraction Port~~
 Other: _____

_____	X	3	=	_____ Gals.
1 Case Volume (Gals.)		Specified Volumes		Calculated Volume

Time	Temp (°F)	pH	Cond.	Gals. Removed	Observations
					Well inaccessible - car parked over it

Did well dewater? Yes No Gallons actually evacuated: _____

Sampling Time: _____ Sampling Date: _____

Sample I.D.: ~~MW13~~ Laboratory: Sequoia CORE N. Creek Assoc. Labs

Analyzed for: TPH-G BTEX MTBE TPH-D Other: 8010

Duplicate I.D.: _____ Analyzed for: TPH-G BTEX MTBE TPH-D Other: _____

D.O. (if req'd):	Pre-purge:	mg/L	Post-purge:	mg/L
O.R.P. (if req'd):	Pre-purge:	mV	Post-purge:	mV

CHEVRON WELL MONITORING DATA SHEET

Project #: 990415-51	Station #: 206265
Sampler: Jon P	Date: 4-15-99
Well I.D.: MW15	Well Diameter: 2 3 <u>(4)</u> 6 8
Total Well Depth: 7.20	Depth to Water: 5.75
Depth to Free Product:	Thickness of Free Product (feet):
Referenced to: <u>(PVC)</u> Grade	D.O. Meter (if req'd): YSI HACH

Well Diameter	Multiplier	Well Diameter	Multiplier
2"	0.16	5"	1.02
3"	0.37	6"	1.47
4"	0.65	Other	radius ² * 0.163

Purge Method: Bailer Sampling Method: Bailer

Disposable Bailer (Disposable Bailer)

Middleburg Extraction Port

Electric Submersible Other: _____

Extraction Pump

Other: _____

.9	x	3	=	2.8	Gals.
1 Case Volume (Gals.)		Specified Volumes		Calculated Volume	

Time	Temp (°F)	pH	Cond.	Gals. Removed	Observations
* Grab sampled * well is full of dirt					
filled 3 voas					
well does recharge somewhat					

Did well dewater? (Yes) No Gallons actually evacuated: _____

Sampling Time: 1500 Sampling Date: 4-15-99

Sample I.D.: MW15 Laboratory: (Sequoia) CORE N. Creek Assoc. Labs

Analyzed for: (TPH-G BTEX MTBE) TPH-D Other: 8010

Duplicate I.D.: _____ Analyzed for: TPH-G BTEX MTBE TPH-D Other: _____

D.O. (if req'd):	Pre-purge:	mg/L	Post-purge:	mg/L
O.R.P. (if req'd):	Pre-purge:	mV	Post-purge:	mV

CHEVRON WELL MONITORING DATA SHEET

Project #: 990415-51	Station #: 206265
Sampler: Jon P	Date: 4-15-99
Well I.D.: MW17	Well Diameter: 2 3 4 6 8 <u> </u>
Total Well Depth:	Depth to Water:
Depth to Free Product:	Thickness of Free Product (feet):
Referenced to: PVC Grade	D.O. Meter (if req'd): YSI HACH

Well Diameter	Multiplier	Well Diameter	Multiplier
2"	0.16	5"	1.02
3"	0.37	6"	1.47
4"	0.65	Other	radius ² * 0.163

Purge Method:

Bailer
 Disposable Bailer
 Middleburg
 Electric Submersible
 Extraction Pump
 Other: _____

Sampling Method:

Bailer
 Disposable Bailer
 Extraction Port
 Other: _____

_____	X	3	=	_____ Gals.
1 Case Volume (Gals.)		Specified Volumes		Calculated Volume

Time	Temp (°F)	pH	Cond.	Gals. Removed	Observations
					Well Inaccessible Car parked over it

Did well dewater? Yes No Gallons actually evacuated: _____

Sampling Time: _____ Sampling Date: _____

Sample I.D.: ~~MW17~~ Laboratory: Sequoia CORE N. Creek Assoc. Labs

Analyzed for: TPH-G BTEX MTBE TPH-D . Other: 8010

Duplicate I.D.: _____ Analyzed for: TPH-G BTEX MTBE TPH-D Other: _____

D.O. (if req'd):	Pre-purge:	mg/L	Post-purge:	mg/L
O.R.P. (if req'd):	Pre-purge:	mV	Post-purge:	mV

CHEVRON WELL MONITORING DATA SHEET

Project #: 990415-51	Station #: 206265
Sampler: Jon P	Date: 4-15-99
Well I.D.: MW18	Well Diameter: (2) 3 4 6 8
Total Well Depth: 10.65	Depth to Water: 4.75
Depth to Free Product:	Thickness of Free Product (feet):
Referenced to: (PVC) Grade	D.O. Meter (if req'd): YSI HACH

Well Diameter	Multiplier	Well Diameter	Multiplier
2"	0.16	5"	1.02
3"	0.37	6"	1.47
4"	0.65	Other	radius ² * 0.163

Purge Method: Bailer Disposable Bailer Middleburg Electric Submersible Extraction Pump

Other: _____

Sampling Method: Bailer Disposable Bailer Extraction Port

Other: _____

.9	x	3	=	2.8	Gals.
1 Case Volume (Gals.)		Specified Volumes		Calculated Volume	

Time	Temp (°F)	pH	Cond.	Gals. Removed	Observations
1156	62.2		440	1	
1158	59.4		470	2	
1200	59.2		470	3	

Did well dewater? Yes No Gallons actually evacuated: 3

Sampling Time: 1206 Sampling Date: 4-15-99

Sample I.D.: MW18 Laboratory: (Sequoia) CORE N. Creek Assoc. Labs

Analyzed for: (TPH-G BTEX MTBE) TPH-D . Other: 8010

Duplicate I.D.: Analyzed for: TPH-G BTEX MTBE TPH-D Other:

D.O. (if req'd):	Pre-purge:	mg/L	Post-purge:	mg/L
O.R.P. (if req'd):	Pre-purge:	mV	Post-purge:	mV

CHEVRON WELL MONITORING DATA SHEET

Project #: 990415-51	Station #: 206265
Sampler: Jon P	Date: 4-15-99
Well I.D.: MW19A	Well Diameter: 2 3 4 6 8 <u> </u>
Total Well Depth:	Depth to Water:
Depth to Free Product:	Thickness of Free Product (feet):
Referenced to: PVC Grade	D.O. Meter (if req'd): YSI HACH

Well Diameter	Multiplier	Well Diameter	Multiplier
2"	0.16	5"	1.02
3"	0.37	6"	1.47
4"	0.65	Other	radius ² * 0.163

Purge Method: Bailer Disposable Bailer Middleburg Electric Submersible Extraction Pump

Other: _____

Sampling Method: Bailer Disposable Bailer Extraction Port

Other: _____

_____	X	3	=	_____ Gals.
1 Case Volume (Gals.)		Specified Volumes		Calculated Volume

Time	Temp (°F)	pH	Cond.	Gals. Removed	Observations
					Well inaccessible - car parked over it

Did well dewater? Yes No Gallons actually evacuated: _____

Sampling Time: _____ Sampling Date: _____

Sample I.D.: ~~MW19A~~ Laboratory: Sequoia CORE N. Creek Assoc. Labs

Analyzed for: TPH-G BTEX MTBE TPH-D Other: 8010

Duplicate I.D.: _____ Analyzed for: TPH-G BTEX MTBE TPH-D Other: _____

D.O. (if req'd):	Pre-purge:	mg/L	Post-purge:	mg/L
O.R.P. (if req'd):	Pre-purge:	mV	Post-purge:	mV