

significant concentrations of hydrocarbons. Considering that the gravel and rainwater were completely removed from the site, the analytical results of these two samples do not represent the present conditions at the site. Laboratory results of the native soil sampled from the base of the excavation (samples 2 through 5) are listed below in Table 1.

TABLE 1

Analytical Results of Gravel and Native Soil Samples and Water Sample  
670 Olympic Avenue  
Hayward, California

*Gravel (not listed)*

*VOCs (not H.VOCs)*

Sample ID	TPHg (mg/Kg)	TPHd (mg/Kg)	BTEX (mg/Kg)	MTBE (µg/Kg)	TRPH (mg/Kg)	SVOs (µg/Kg)	HVOCs (µg/Kg)
<i>Shed</i>	<1.0	200	0.008	16	550	<330 to <1700	9.3 to 76
<i>bottom</i>	<1.0	<1.0	<0.005	<0.005	<25	<330 to <1700	<5 to <30
<i>North</i>	<1.0	<1.0	<0.005	23	<25	<330 to <1700	<5 to <20
<i>4</i>	<1.0	1.3	<0.005	12	<25	<330 to <1700	<5 to <20
<i>Well 5</i>	<1.0	<1.0	<0.005	<0.005	23	<330 to <1700	<5 to <20
W-1	NA	NA	NA	NA	26	NA	NA

- TPHg = Total petroleum hydrocarbons reported as gasoline using EPA Methods 3550/8015(m).
  - TPHd = Total petroleum hydrocarbons reported as diesel using EPA Methods 3550/8015(m).
  - BTEX = Benzene, toluene, ethyl benzene, total xylenes using EPA Method 8260B.
  - TRPH = Total recoverable petroleum hydrocarbons using SM 5520D&F.
  - SVOs = Semi-volatile organics using EPA Method 8270.
  - HVOCs = Halogenated volatile organics using EPA Method 8010.
  - mg/Kg = Milligrams per kilogram, equivalent to parts per million (ppm).
  - µg/Kg = Micrograms per kilogram, equivalent to parts per billion (ppb).
  - < = Less than the laboratory method detection limit.
  - NA = Not analyzed.
- Metals were detected at background concentrations (not detected to 52 mg/Kg), lead was not detected in any soil sample.

Based on the analytical results obtained from beneath the former UST, *TERRARESEARCH, inc.* recommends that further environmental work is not warranted for this site.



**Sequoia Analytical**

680 Chesapeake Drive  
404 N. Wiget Lane  
819 Striker Avenue, Suite 8  
1455 McDowell Blvd. North. Ste. D

Redwood City, CA 94063  
Walnut Creek, CA 94598  
Sacramento, CA 95834  
Petaluma, CA 94954

(650) 364-9600  
(925) 988-9600  
(916) 921-9600  
(707) 792-1865

FAX (650) 364-9233  
FAX (925) 988-9673  
FAX (916) 921-0100  
FAX (707) 792-0342

Terrasearch  
11840 Dublin Blvd.  
Dublin, CA 94568  
Attention: Rob Campbell

Client Project ID: Summerhill- Olympic Ave.  
Sample Matrix: Soil  
Analysis Method: EPA 3550/8015 Modified  
First Sample #: 903-0379

Sampled: Mar 3, 1999  
Received: Mar 3, 1999  
Reported: Mar 11, 1999

QC Batch Number.

SP030599

8015EXA

**FUEL FINGERPRINT**

Analyte	Reporting Limit mg/kg	Sample I.D. 903-0379
Diesel (C8-C24)	1.0	420
JP-4 (C8-C14)	1.0	N.I.
JP-5 (C10-C16)	1.0	N.I.
Kerosene (C10-C18)	1.0	N.I.
Motor Oil (>C16)	10	3,600
Paint Thinner (C10-C12)	1.0	N.I.
Unidentified Extractable Hydrocarbons	1.0	N.I.

**Quality Control Data**

Report Limit Multiplication Factor:	200
Date Extracted:	3/5/99
Date Analyzed:	3/9/99
Instrument Identification:	HP-3A

Unidentified Extractable Hydrocarbons are quantitated against a fresh diesel standard. Analytes reported as N.I. (None Identified) were not detected above the stated reporting limit.

SEQUOIA ANALYTICAL, #1271

*Sharma*  
Dimple Sharma  
Project Manager



# Acculabs Inc.

Davis

1046 Olive Drive, Davis CA 95616 ■ 530-757-0920 ■ Fax 753-6091

Sample Log 19887

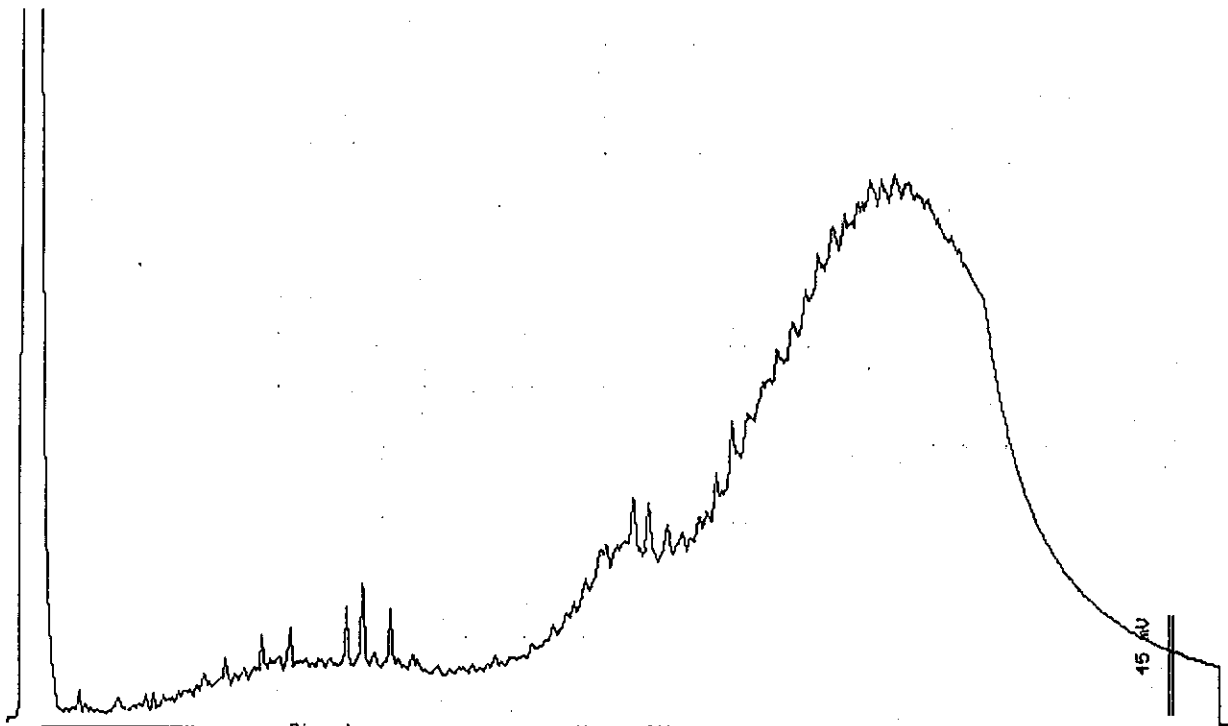
19887-01

Sample: G9245 (1)

From : Terrasearch  
Sampled : 04/14/99  
Extracted: 04/14/99  
Dilution : 1:5  
Matrix : Soil

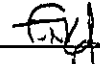
QC Batch : DS990402  
Run Log : 7435C

Parameter	(MRL) mg/kg	Measured Value mg/kg
TPH as Diesel	(5.0)	200



EPA Mod 8015

Date: 04-15-99 Time: 12:13:08  
Column : 0.53mm ID X 15m DB1 (J&W Scientific)

  
Stewart Rodolsky  
Senior Chemist



# Acculabs Inc.

Davis

1046 Olive Drive, Davis CA 95616 ■ 530-757-0920 ■ Fax 753-6091

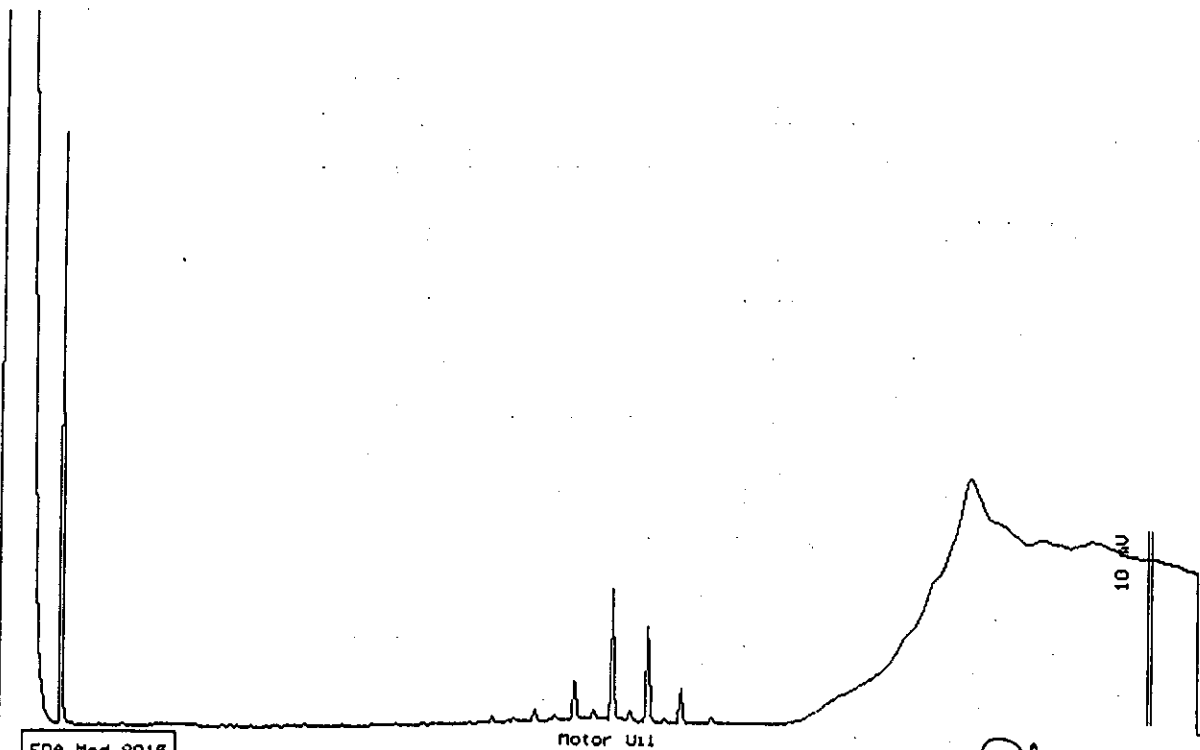
Sample Log 19887  
19887-02

Sample: G9246 (2)

From : Terrasearch  
Sampled : 04/14/99  
Extracted: 04/14/99  
Dilution : 1:1  
Matrix : Soil


QC Batch : DS990402  
Run Log : 7435C

Parameter	(MRL) mg/kg	Measured Value mg/kg
TPH as Diesel	(1.0)	<1.0



EPA Mod 8015

Date: 04-15-99 Time: 12:47:48  
Column : 0.53mm ID X 15m DB1 (J&W Scientific)

  
 Stewart Ppolsky  
 Senior Chemist

# Acculabs Inc.

Davis

1046 Olive Drive, Davis CA 95616 • 530-757-0920 • Fax 753-6091

Sample Log 19887

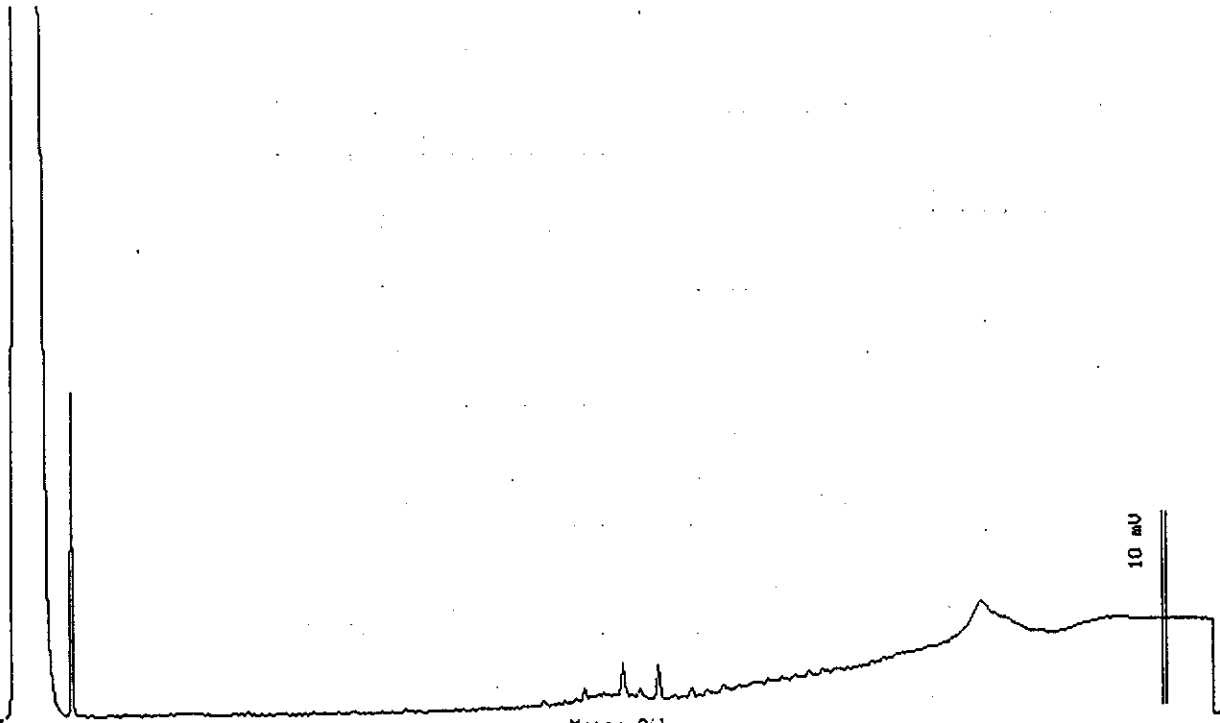
19887-03

Sample: G9247 (3)

From : Terrasearch  
Sampled : 04/14/99  
Extracted: 04/14/99  
Dilution : 1:1  
Matrix : Soil

QC Batch : DS990402  
Run Log : 7435C

Parameter	(MRL) mg/kg	Measured Value mg/kg
TPH as Diesel	(1.0)	<1.0



EPA Mod 8015

Date: 04-15-99 Time: 13:22:21  
Column : 0.53mm ID X 15m DB1 (J&W Scientific)

*[Signature]*  
Stewart Rodolsky  
Senior Chemist



# Acculabs Inc.

Davis

1046 Olive Drive, Davis CA 95616 ■ 530-757-0920 ■ Fax 753-6091

Sample Log 19887

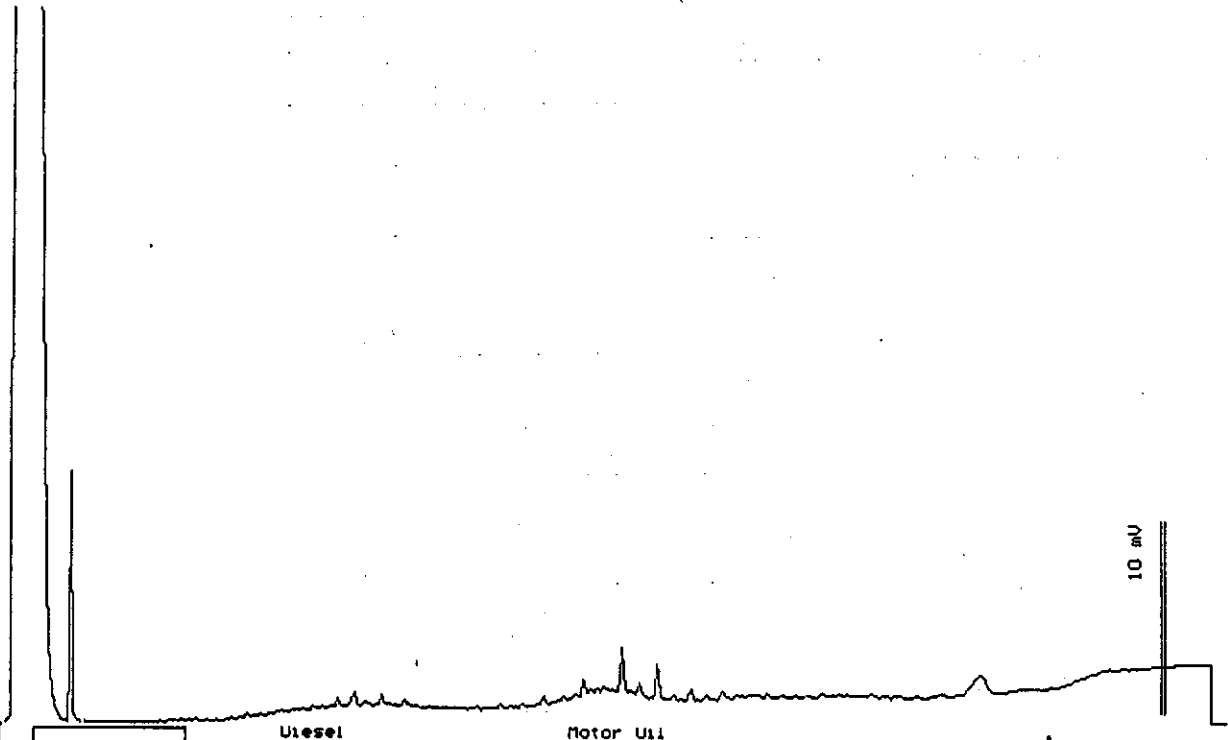
19887-04

Sample: G9248 (4)

From : Terrasearch  
Sampled : 04/14/99  
Extracted: 04/14/99  
Dilution : 1:1  
Matrix : Soil

QC Batch : DS990402  
Run Log : 7435C

Parameter	(MRL) mg/kg	Measured Value mg/kg
TPH as Diesel	(1.0)	1.3




EPA Mod 8015

Diesel

Motor Oil

10 mV

Date: 04-15-99 Time: 13:57:05  
Column : 0.53mm ID X 18m DB1 (J&W Scientific)

  
Stewart Rodolsky  
Senior Chemist



# Acculabs Inc.

Davis

1046 Olive Drive, Davis CA 95616 ■ 530-757-0920 ■ Fax 753-6091

Sample Log 19887

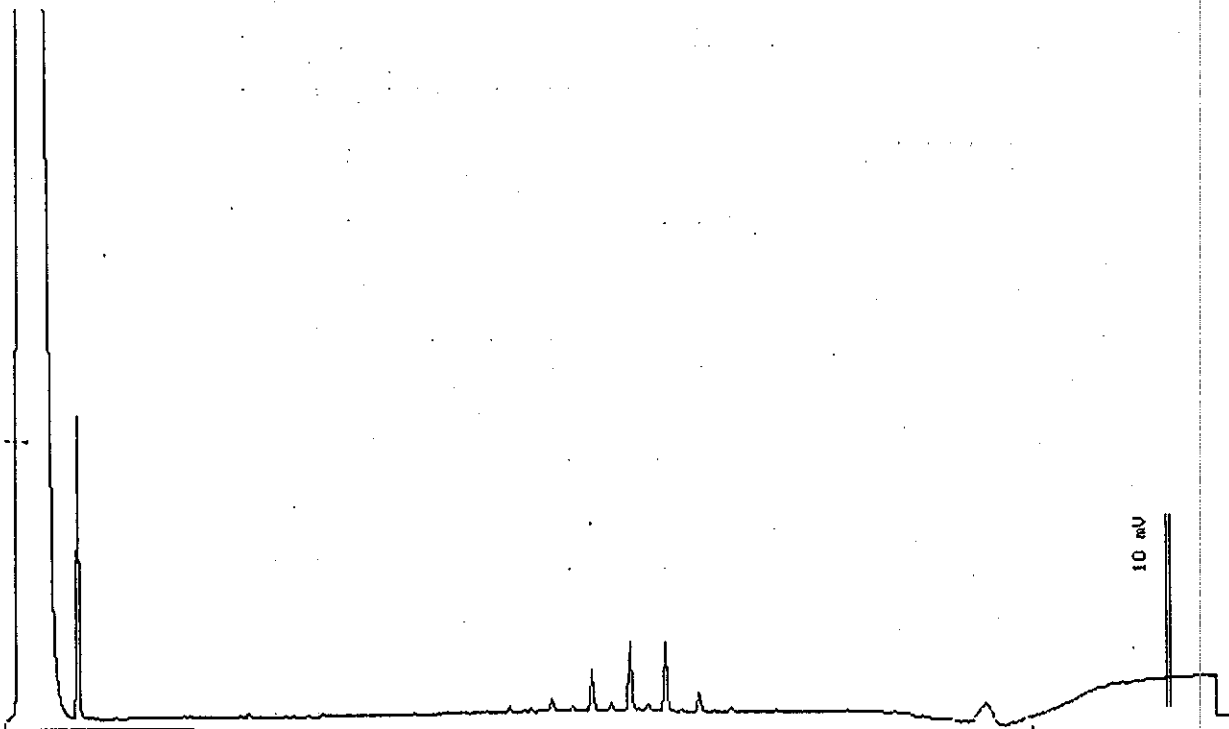
19887-05

Sample: G9249 (5)

From : Terrasearch  
Sampled : 04/14/99  
Extracted: 04/14/99  
Dilution : 1:1  
Matrix : Soil

QC Batch : DS990402  
Run Log : 7435C

Parameter	(MRL) mg/kg	Measured Value mg/kg
TPH as Diesel	(1.0)	<1.0



EPA Mod 8015

Date: 04-15-99 Time: 14:32:02  
Column : 0.53mm ID X 15m DB1 (J&W Scientific)

*[Signature]*  
Stewart Podolsky  
Senior Chemist