



CITY OF EMERYVILLE

INCORPORATED 1888

OFFICE OF THE CITY ATTORNEY

1333 PARK AVENUE

EMERYVILLE, CALIFORNIA 94608-3517

TEL: (510) 596-4370 FAX: (510) 596-3724

Via Facsimile Only

January 24, 2003

Eva Chu
Alameda County Department of Environmental Health
(510-337-9335)

re: Environmental Testing Data
Union Pacific Railroad Right-of-Way
Assessor Parcel Number 049-1328-5
Powell Street/Hollis Street

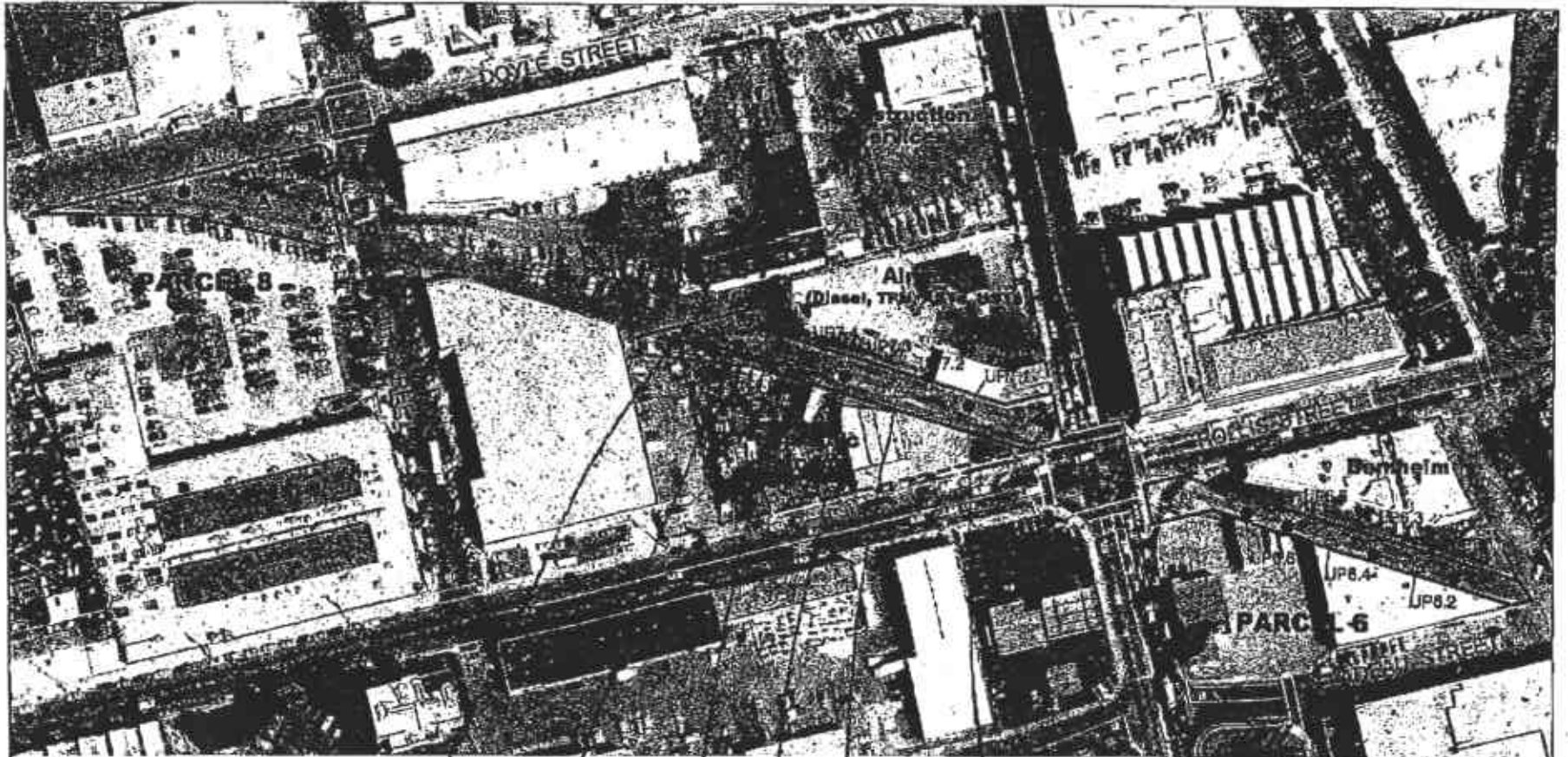
Dear Ms. Chu:

As you are aware the City of Emeryville has conducted soil and groundwater tests on the above referenced parcel, which sits adjacent to the property at 1350 Powell Street, Emeryville, California (APN 049-1328-002-01). I understand further that you are interested in reviewing the data the City of Emeryville has collected in connection with your oversight of hazardous material cleanup activities at 1350 Powell Street. Accordingly, enclosed please find data provided to me by our environmental consultants for your use. Please note that the shaded areas at the bottom of Tables 1, 2 and 3 relate to composite samples for which data have not come in yet. Please don't hesitate to contact me if you should need anything further.

Very truly yours,

Michael G. Biddle
City Attorney

cc: Ignacio Dayrit, Project Coordinator
Steve Kalmbach, Pulte Homes (925-485-0391)
Bob Clarke Rydell, Cambria Environmental (510-420-9170)
Dave Diamond (hand delivery)

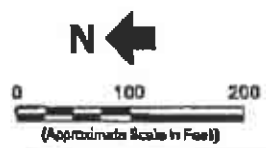


Notes:

- 1. All locations are approximate.
- 2. Map Source: City of Emeryville Aerial Photography

Legend:

- Soil Sample Location
- △ Grab Groundwater Sample Location



UP 7.6
 UP 7.5
 UP 7.4
 UP 7.3
 UP 7.2
 UP 7.1

**Eler &
 Kallnowski, Inc.**

Union Pacific Railroad Parcels
 South Area

DRAFT

City of Emeryville
 Emeryville, CA
 January 2003
 EX A20026.00
 Figure 4

Table 1
Soil Sample Data For VOCs, Oil and Grease, and TPH Collected from UP7 (a,b)
Emeryville UPRR, Emeryville, California (EKI A20026.00)

Sample ID	Location ID	Sampling Depth Range (ft bgs)		Date	VOCs (8260/5035) (mg/kg)	Oil and Grease (9071) (mg/kg)	TPH (8015M) (mg/kg)	
		From	To				TEPH	TVPH
UP7.1-3.5-4	UP7	3.5	4	11/20/02	ND	-	-	<1.00
UP7.1-4-4.5	UP7	4	4.5	11/20/02	-	<50.0	<10.0	-
UP7.2-3.5-4	UP7	3.5	4	11/20/02	ND	-	-	63.0
UP7.2-4.5-5.5	UP7	4.5	5.5	11/20/02	-	2,110	11,300 (c)	-
UP7.3-3.5-4	UP7	3.5	4	11/20/02	ND	-	-	30.6
UP7.3-4-4.5	UP7	4	4.5	11/20/02	-	185	1,709 (c)	-
UP7.4-4-5	UP7	4	5	11/20/02	-	1,123	1,368 (d,e)	-
UP7.4-5-5.5	UP7	5	5.5	11/20/02	ND	-	-	6.44
UP7.5-3.5-4	UP7	3.5	4	11/20/02	ND	-	-	<1.00
UP7.5-4-4.5	UP7	4	4.5	11/20/02	-	<50.0	<10.0	-
UP7.6-3.5-4	UP7	3.5	4	11/20/02	ND	-	-	<1.00
UP7.6-4-4.5	UP7	4	4.5	11/20/02	-	<50.0	<10.0	-

DRAFT

Table 1
Soil Sample Data For VOCs, Oil and Grease, and TPH Collected from UP7 (a,b)
Emeryville UPRR, Emeryville, California (EKI A20026.00)

Abbreviations:

-	Not analyzed
ft bgs	Feet below ground surface
mg/kg	milligrams per kilogram
PCE	Tetrachloroethane
TEPH	Total Extractable Petroleum Hydrocarbon
TPH	Total Petroleum Hydrocarbon
TVPH	Total Volatile Petroleum Hydrocarbon
TCE	Trichloroethene
VOCs	Volatile Organic Compounds

Notes:

- (a) Shaded cells represent those analyses which were requested by EKI on the Chain-of-Custody forms.
- (b) Only those compounds that were detected in at least one sample are listed in this table and are indicated in bold.
- (c) Broad partially resolved diesel
- (d) Broad poorly resolved diesel
- (e) Broad poorly resolved and somewhat heavier than diesel

DRAFT

Table 2
Soil Sample Data For SVOCs, PCHs, and Herbicides Collected from UP7 (a,b)
 Emeryville UPRR, Emeryville, California (EKI A20026.00)

Sample ID	Location ID	Sampling Depth Range (ft bgs)		Date	SVOCs (8270) (mg/kg)			PCBs and Pesticides (8081) (mg/kg)	Herbicides (8151) (mg/kg)
		From	To		Fluorene	2-Methylaphthalene	Phenanthrene		
UP7.1-3.5-4	UP7	3.5	4	11/20/02	-	-	-	-	-
UP7.1-4-4.5	UP7	4	4.5	11/20/02	<0.330	<0.330	<0.330	ND	ND
UP7.2-3.5-4	UP7	3.5	4	11/20/02	-	-	-	-	-
UP7.2-4.5-5.5	UP7	4.5	5.5	11/20/02	1.360	5.100	1.704	ND	ND
UP7.3-3.5-4	UP7	3.5	4	11/20/02	-	-	-	-	-
UP7.3-4-4.5	UP7	4	4.5	11/20/02	<0.330	<0.330	<0.330	ND	ND
UP7.4-4-5	UP7	4	5	11/20/02	<0.330	<0.330	<0.330	ND	ND
UP7.4-5-5.5	UP7	5	5.5	11/20/02	-	-	-	-	-
UP7.5-3.5-4	UP7	3.5	4	11/20/02	-	-	-	-	-
UP7.5-4-4.5	UP7	4	4.5	11/20/02	<0.330	<0.330	<0.330	ND	ND
UP7.6-3.5-4	UP7	3.5	4	11/20/02	-	-	-	-	-
UP7.6-4-4.5	UP7	4	4.5	11/20/02	<0.330	<0.330	<0.330	ND	ND

Abbreviations:

- Not analyzed
- ft bgs Feet below ground surface
- mg/kg Milligrams per kilogram
- ND Not detected above laboratory reporting limits
- PCBs Polychlorinated Biphenyls
- SVOCs Semivolatile Organic Compounds

DRAFT

Notes:

- (a) Shaded cells represent those analyses which were requested by EKI on the Chain-of-Custody forms.
- (b) Only those compounds that were detected in at least one sample are listed in this table and are indicated in bold.

Table 3
Soil Sample Data For Metals Collected from UP7 (a, b)
Emeryville UPRR, Emeryville, California (EKI A20026.00)

Sample ID	Location ID	Sampling Depth Range (ft bgs)		Date	Metals (3050/6020) (mg/kg)												
		From	To		Arsenic	Barium	Chromium	Cobalt	Copper	Lead	Mercury	Nickel	Silver	Vanadium	Zinc		
UP7.1-3.5-4	UP7	3.5	4	11/20/02	-	-	-	-	-	-	-	-	-	-	-	-	-
UP7.1-4-4.5	UP7	4	4.5	11/20/02	4.14	152	25.8	6.43	12.3	6.79	0.108	29.4	<2.5	25.6	26.5	-	-
UP7.2-3.5-4	UP7	3.5	4	11/20/02	-	-	-	-	-	-	-	-	-	-	-	-	-
UP7.2-4.5-5.5	UP7	4.5	5.5	11/20/02	2.82	155	26.6	5.44	11.2	3.98	<0.10	35.7	<2.5	22.4	35.6	-	-
UP7.3-3.5-4	UP7	3.5	4	11/20/02	-	-	-	-	-	-	-	-	-	-	-	-	-
UP7.3-4-4.5	UP7	4	4.5	11/20/02	2.72	138	17.9	2.85	13.2	3.89	<0.10	30.9	<2.5	16.9	26.0	-	-
UP7.4-4-5	UP7	4	5	11/20/02	<2.5	210	30.7	4.08	14.8	5.94	<0.10	52.3	<2.5	24.7	52.9	-	-
UP7.4-5-5.5	UP7	5	5.5	11/20/02	-	-	-	-	-	-	-	-	-	-	-	-	-
UP7.5-3.5-4	UP7	3.5	4	11/20/02	-	-	-	-	-	-	-	-	-	-	-	-	-
UP7.5-4-4.5	UP7	4	4.5	11/20/02	5.71	219	24.4	8.31	10.8	8.89	0.219	37.5	<2.5	31.5	22.9	-	-
UP7.6-3.5-4	UP7	3.5	4	11/20/02	-	-	-	-	-	-	-	-	-	-	-	-	-
UP7.6-4-4.5	UP7	4	4.5	11/20/02	3.80	168	28.0	6.22	11.0	5.97	<0.10	31.8	<2.5	26.3	23.6	-	-

Abbreviations:

- Not analyzed
- ft bgs Feet below ground surface
- mg/kg Milligrams per kilogram

DRAFT

Notes:

- (a) Shaded cells represent those analyses which were requested by EKI on the Chain-of-Custody forms.
- (b) Only those compounds that were detected in at least one sample are listed in this table.

Table 4
Summary of Water Sample Data Collected from UP7 (a, b)
Emeryville UPRR, Emeryville, California (EKI A20026.00)

Sample ID	Location ID	Sampling Depth Range (ft bgs)		Date	VOCs (8260/5035) (ug/L)	TEPH (8015M) (ug/L)	TVPH (8015M) (ug/L)	Metals (3050/6020) (ug/L)												
		From	To		1,2,4-Trichlorobenzene			Antimony	Arsenic	Barium	Chromium	Cobalt	Copper	Lead	Mercury	Molybdenum	Nickel	Selenium	Vanadium	Zinc
UP7.2-0-25	UP7	0	25	11/20/02	1.91	233 (c,d)	<50	<1.0	<1.0	706	5.63	7.36	3.14	<1.0	1.70	5.79	14.6	5.07	2.12	14.5
UP7.4-0-25	UP7	0	25	11/20/02	<1.00	197 (d)	<50	<1.0	1.65	176	4.51	5.23	1.93	<1.0	0.490	5.71	13.0	1.72	1.70	12.1

Abbreviations:

- Not analyzed
- ft bgs Feet below ground surface
- VOCs Volatile Organic Compounds
- TEPH Total Extractable Petroleum Hydrocarbon
- TVPH Total Volatile Petroleum Hydrocarbon
- TCE Trichloroethene
- UPRR Union Pacific Railroad
- ug/L Micrograms per liter

DRAFT

Notes:

- (a) Shaded cells represent those analyses which were requested by EKI on the Chain-of-Custody forms.
- (b) Only those compounds that were detected in at least one sample are listed in this table.
- (c) Broad poorly resolved diesel
- (d) Broad poorly resolved and somewhat heavier than diesel