



Bakersfield
 4700 Stockdale Highway, Suite 120
 Post Office Box 9217
 Bakersfield, California 93389
 805/326-1112 805/326-0191 FAX

WZI INC.

FAX LEAD SHEET

To: STEVE MUIR
 Company: SIERRA BRAVO/WZI
 From: Michelle
 Subject: _____
 Message: _____



pls let me know if this is it - thanks
no other status rpt found

Total Number of Pages, Include Cover Page: 2/

Date Transmitted: 4-4-96

Fax Number: 209-369-9358

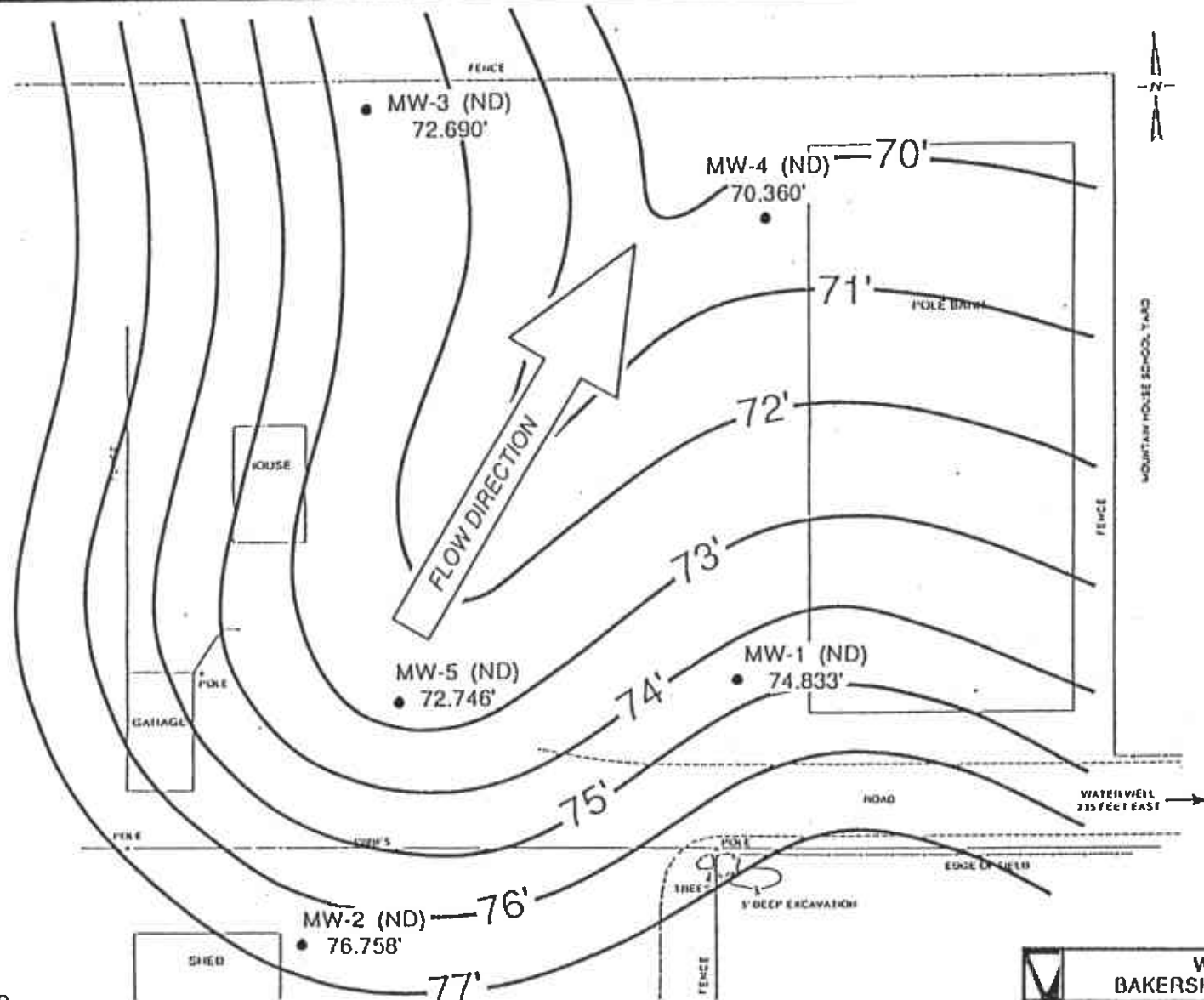
Telephone Number: 209-369-9421

File Number: _____

CONFIRMING TELEPHONE NUMBER IS (805) 326-1112

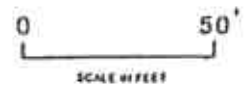
WZI INC. FAX NUMBER IS (805) 326-0191

Oper.: Date Sent: 4-4 Time Sent: 835 Initials: MAG Copies & Distribution: _____

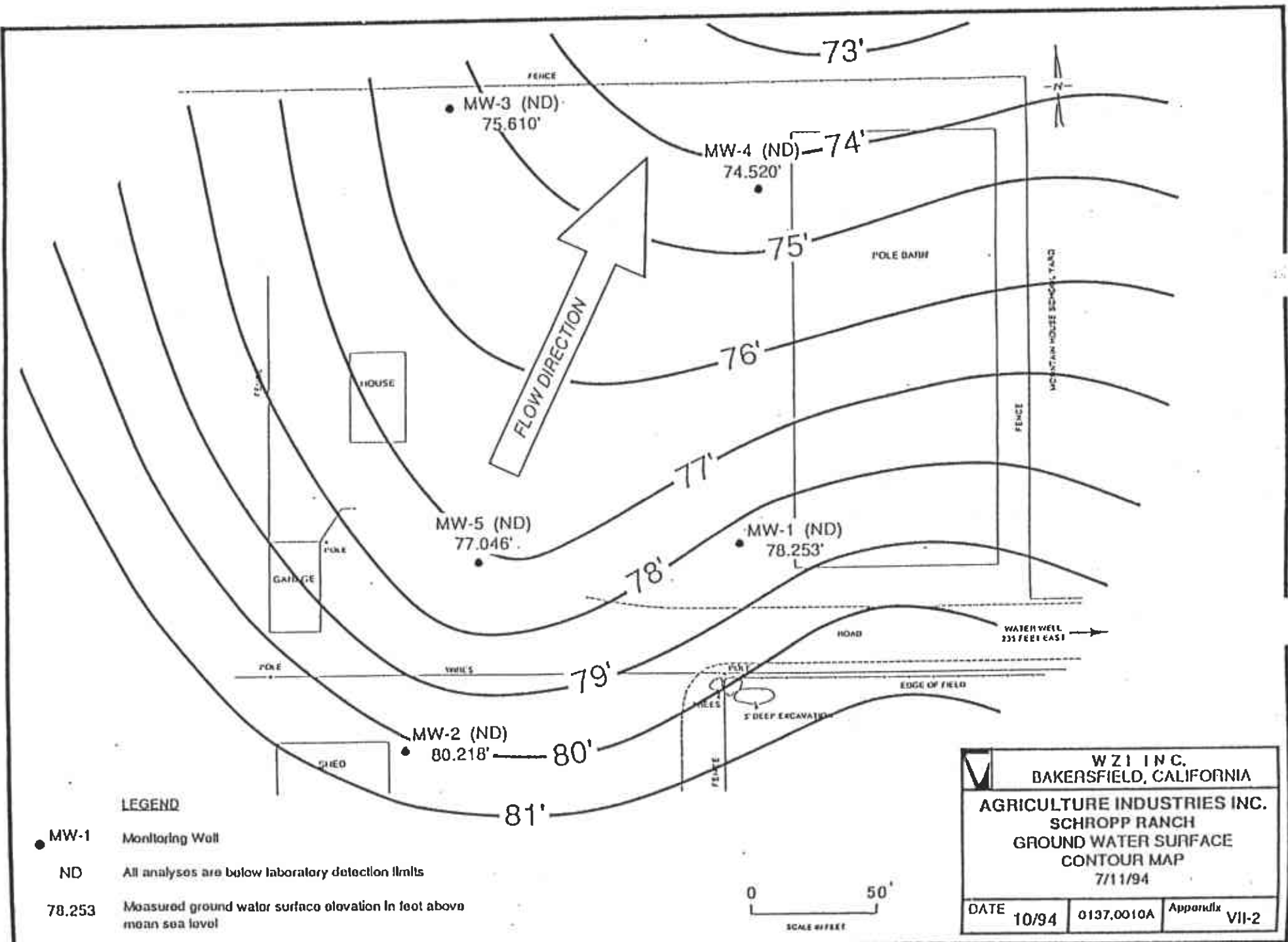


LEGEND

- MW-1 Monitoring Well
- ND All analyses are below laboratory detection limits
- 78.253 Measured ground water surface elevation in feet above mean sea level



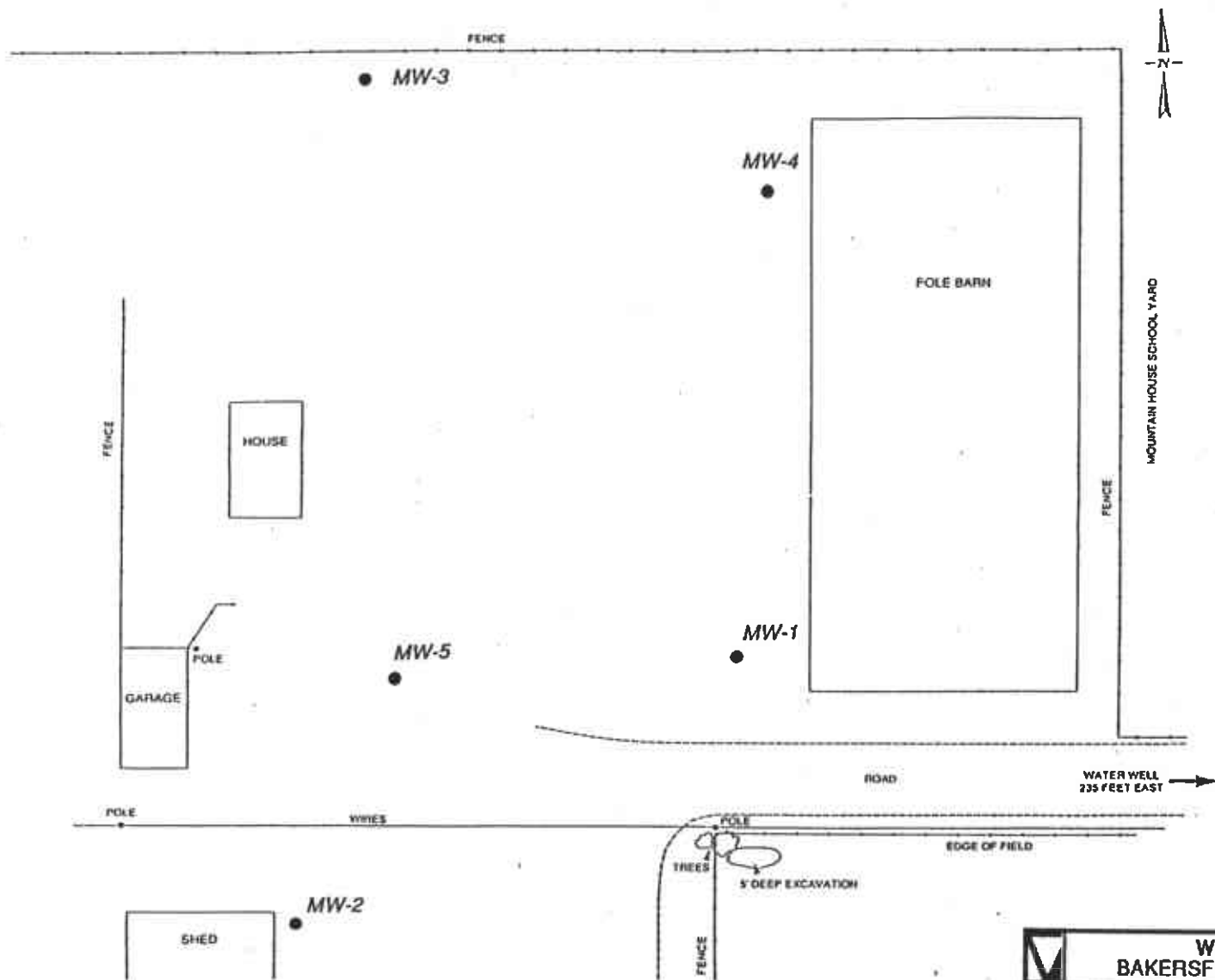
W Z I INC. BAKERSFIELD, CALIFORNIA		
AGRICULTURE INDUSTRIES INC. SCHROPP RANCH GROUND WATER SURFACE CONTOUR MAP 3/29/94		
DATE	0137.0010A	Appendix VII-1
10/94		



- LEGEND**
- MW-1 Monitoring Well
 - ND All analyses are below laboratory detection limits
 - 78.253 Measured ground water surface elevation in feet above mean sea level



W Z I INC. BAKERSFIELD, CALIFORNIA		
AGRICULTURE INDUSTRIES INC. SCHROPP RANCH GROUND WATER SURFACE CONTOUR MAP 7/11/94		
DATE	10/94	0137.0010A
		Appendix VII-2



WZI INC. BAKERSFIELD, CALIFORNIA		
AGRICULTURE INDUSTRIES INC. SCHROPP RANCH		
MAP SHOWING MONITORING WELL LOCATIONS		
DATE	0137.0010A	EXHIBIT