

Jakub, Barbara, Env. Health

From: RidgeRat10@aol.com
Sent: Wednesday, May 05, 2010 3:37 PM
To: Jakub, Barbara, Env. Health
Cc: LGrouptrav@aol.com
Subject: Re: Industrial Well
Attachments: 055101-fig-2R. 5-23-07.pdf; WellsearchatŠrLoop,Oak.xls

Barbara: Attached is the well information, and a map you requested.
I will fax you a copy of the well test summary that I found.
I do not have the well permit, boring, or construction log, but information sheet might suffice?
If you need anything more, drop me a email & I will try to dig it up for you.

Gary Lyons
W.E.L. Partnership
P.O.Box 20146
Castro Valley, CA., 94546

In a message dated 5/5/2010 2:03:58 P.M. Pacific Daylight Time, barbara.jakub@acgov.org writes:

Gary,

Can you please send the information you have on the irrigation well. A map showing the location of the irrigation well in relation to the buildings and former tank pits would be very helpful. In lieu of that, any map will be helpful. In addition please send, the well permit, boring and well construction log, other completion information and current use information.

Thanks for your help in this matter.

Barbara Jakub, P.G.

Alameda County Environmental Health

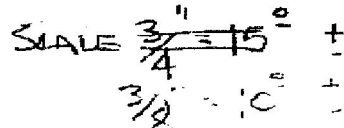
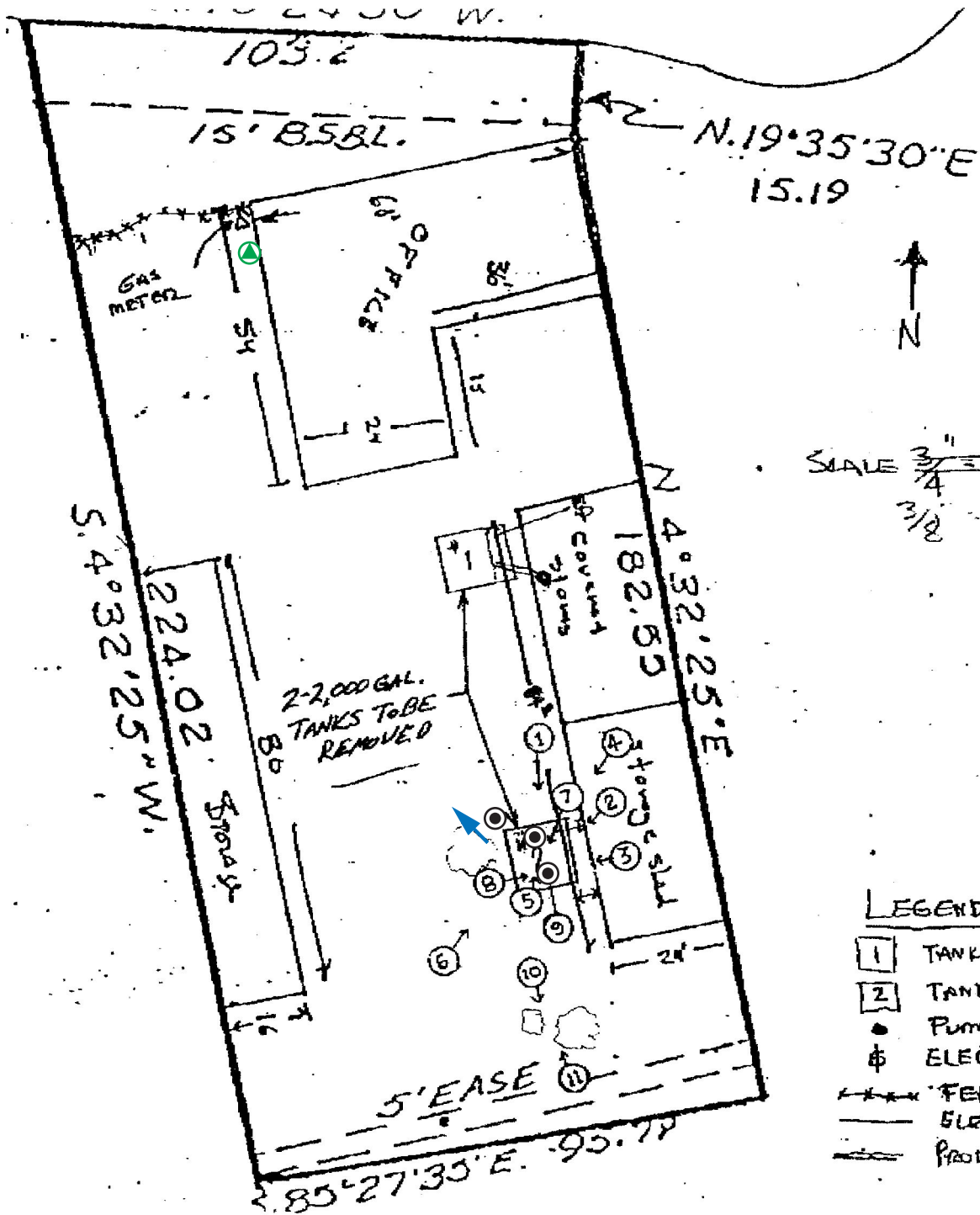
(510) 639-1287 (direct)

(510) 337-9335 (fax)

barbara.jakub@acgov.org

Online case files are available at the website below

<http://www.acgov.org/aceh/lop/resources.htm>



LEGEND

- 1 TANK #1
- 2 TANK #2
- PUMPS
- ⊕ ELECT SWITCHES
- FENCE
- ELECT SUPPLY
- PRODUCT LINES

- ▲ - Well Location
- ➡ - Estimated GW Flow Direction
- ⊙ - Drive-Sample Holes (approximate)

(source: W. E. Lyons, 2005)



THE CONSULTING GROUP
 394 Cecilia Way, Tiburon, CA 94920
 Tel: 415.381.2560 / Fax: 415.381.1741

Site Layout w/ D-S and Well Locations Project
 Soil Sampling & Analysis
 50 Hegenberger Loop
 for W. E. Lyons Construction
 50 Hegenberger Loop, Oakland CA



Figure
2R

Job No. 075101

Date 22 May 07

Drawn by RC

Rev. WL

Apprvd. WL

	A	B	C	D	E	F	G	H	I	J	K	L	M	N	O	P	Q	R	S	T	U
199			2S/3W	28C 3	285 HEGENBERGER RD.	Oakland	SHELL OIL CO.	11/6/1989	1.22E+08	37732664	0	2S/3W 28C	3524	0	OAK	Feb-89	0	17	6	0	MON
200			2S/3W	28C 4	285 HEGENBERGER RD.	Oakland	SHELL OIL CO.	11/6/1989	1.22E+08	37732664	0	2S/3W 28C	3525	0	OAK	Jul-89	0	11	6	0	MON
201			2S/3W	28C 5	285 Hegenberger Road	Oakland	Shell Oil Company	7/13/1990	1.22E+08	37732664	0	2S/3W 28C	576	0	OAK	Nov-89	0	10	7	2	MON
202			2S/3W	28C					0	0	9	2S/3W 28C	7103	0		Jul-89	0	7	6	0	BOR
203			2S/3W	28C					0	0	9	2S/3W 28C	7104	0		Jul-89	0	7	6	0	BOR
204			2S/3W	28C					0	0	9	2S/3W 28C	7105	0		Jul-89	0	7	6	0	BOR
205			2S/3W	28C					0	0	9	2S/3W 28C	7106	0		Jul-89	0	7	5	0	BOR
206			2S/3W	28C					0	0	9	2S/3W 28C	7107	0		Jul-89	0	7	6	0	BOR
207			2S/3W	28C					0	0	9	2S/3W 28C	7108	0		Feb-89	0	7	0	0	BOR
208			2S/3W	28C					0	0	9	2S/3W 28C	7109	0		Feb-89	0	6	6	0	BOR
209			2S/3W	28E 4	9455 Pardee Drive	Oakland	Federal Express	8/31/1990	1.22E+08	37729456	9	2S/3W 28E	849	0	OAK	Jul-90	0	13	6	4	MON
210			2S/3W	28E 5	8455 Pardee Drive	Oakland	Federal Express	8/31/1990	1.22E+08	37729456	9	2S/3W 28E	850	0	OAK	Jul-90	0	13	5	4	MON
211			2S/3W	28E 6	8455 Pardee Drive	Oakland	Federal Express	8/31/1990	1.22E+08	37729456	9	2S/3W 28E	851	0	OAK	Jul-90	10	13	0	4	MON
212			2S/3W	28E 1	8455 Pardee Drive	Oakland	Federal Express Corp.	6/21/1990	1.22E+08	37729456	9	2S/3W 28E	319	0	OAK	1/90	11	12	6	4	MON
213			2S/3W	28E 2	8455 Pardee Drive	Oakland	Federal Express Corp.	6/21/1990	1.22E+08	37729456	9	2S/3W 28E	320	0	OAK	1/90	10	13	5	4	MON
214			2S/3W	28E 3	8455 Pardee Drive	Oakland	Federal Express Corp.	6/21/1990	1.22E+08	37729456	9	2S/3W 28E	321	0	OAK	1/90	10	13	4	4	MON
215			2S/3W	2.80E+13	8455 Pardee Drive	Oakland	Federal Express Corp. MW7	12/13/1994	1.22E+08	37729722	1	2S/3W 28E	0	0	OAK	8/93	10	15	10	4	MON
216			2S/3W	2.80E+14	8455 Pardee Drive	Oakland	Federal Express Corp. MW8	12/13/1994	1.22E+08	37729722	1	2S/3W 28E	0	0	OAK	8/93	11	15	10	4	MON
217			2S/3W	28E	8649 PARDEE DRIVE	Oakland	STECONE BUILDING	10/26/1988	1.22E+08	37729456	9	2S/3W 28E	3526	0	OAK	Jun-88	0	25	8	0	BOR
218			2S/3W	2.80E+15	8400 Pardee Dr	Oakland	United Parcel Service	8/13/1997	1.22E+08	37730957	1	2S/3W 28E	0	0	OAK	7/93	0	18	0	2	MON
219			2S/3W	28E 7	8400 Pardee Drive	Oakland	United Parcel Service	3/26/1991	1.22E+08	37729456	9	2S/3W 28E	1448	0	OAK	Oct-90	0	17	0	0	DES
220			2S/3W	28E 8	8400 Pardee Drive	Oakland	United Parcel Service	3/26/1991	1.22E+08	37729456	9	2S/3W 28E	1449	0	OAK	8/90	9	15	4	4	MON
221			2S/3W	28E 9	8400 Pardee Drive	Oakland	United Parcel Service	3/26/1991	1.22E+08	37729456	9	2S/3W 28E	1450	0	OAK	8/90	9	15	5	4	MON
222			2S/3W	2.80E+11	8400 Pardee Drive	Oakland	United Parcel Service	3/26/1991	1.22E+08	37729456	9	2S/3W 28E	1451	0	OAK	8/90	9	15	4	4	MON
223			2S/3W	2.80E+12	8400 Pardee Drive	Oakland	United Parcel Service	3/26/1991	1.22E+08	37729456	9	2S/3W 28E	1452	0	OAK	8/90	7	15	3	4	MON
224			2S/3W	28E					0	0	9	2S/3W 28E	7110	0		Jun-88	0	31	9	0	BOR
225			2S/3W	28E					0	0	9	2S/3W 28E	7111	0		Jun-88	0	14	0	0	BOR
226			2S/3W	28F 7	106-110 Hegenberger Rd	Oakland	David Property	9/19/1997	1.22E+08	37730236	1	2S/3W 28E	0	0	OAK	2/94	0	23	18	2	MON
227			2S/3W	28F 8	106-110 Hegenberger Rd	Oakland	David Property	9/19/1997	1.22E+08	37730236	1	2S/3W 28E	0	0	OAK	2/94	0	24	0	2	MON
228			2S/3W	28F 9	106-110 Hegenberger Rd	Oakland	David Property	9/19/1997	1.22E+08	37730236	1	2S/3W 28E	0	0	OAK	2/94	0	31	0	2	MON
229			2S/3W	28F 1	265 HEGENBERGER RD	Oakland	MARRIOT CORP.	1/22/1990	1.22E+08	37731824	0	2S/3W 28E	3527	0	OAK	Apr-89	0	16	7	4	MON
230			2S/3W	28F 2	265 HEGENBERGER RD	Oakland	MARRIOT CORP.	1/22/1990	1.22E+08	37731824	0	2S/3W 28E	3528	0	OAK	Apr-89	0	16	7	4	MON
231			2S/3W	28F 3	265 HEGENBERGER RD	Oakland	MARRIOT CORP.	1/22/1990	1.22E+08	37731824	0	2S/3W 28E	3529	0	OAK	Apr-89	0	12	5	4	MON
232			2S/3W	28F 4	20 Hegenberger Pl	Oakland	Paramount Pest Control	8/21/1997	1.22E+08	37730815	1	2S/3W 28E	0	0	OAK	7/93	0	25	16	2	MON
233			2S/3W	28F 5	20 Hegenberger Pl	Oakland	Paramount Pest Control	8/21/1997	1.22E+08	37730815	1	2S/3W 28E	0	0	OAK	7/93	0	25	16	2	MON
234			2S/3W	28F 6	20 Hegenberger Pl	Oakland	Paramount Pest Control	8/21/1997	1.22E+08	37730815	1	2S/3W 28E	0	0	OAK	7/93	0	25	16	2	MON
235			2S/3W	28G 9	121 98th Av	Oakland	Budget Rent a Car Corpora	9/17/1997	1.22E+08	37727990	1	2S/3W 28E	0	0	OAK	9/94	0	11	4	2	MON
236			2S/3W	28G 6	121 98th Ave	Oakland	Budget Rent a Car Corpora	9/11/1997	1.22E+08	37727990	1	2S/3W 28E	0	0	OAK	5/93	0	11	4	2	MON
237			2S/3W	28G 7	121 98th Ave	Oakland	Budget Rent a Car Corpora	9/11/1997	1.22E+08	37727990	1	2S/3W 28E	0	0	OAK	5/93	0	11	4	2	MON
238			2S/3W	28G 8	121 98th Ave	Oakland	Budget Rent a Car Corpora	9/11/1997	1.22E+08	37727990	1	2S/3W 28E	0	0	OAK	5/93	0	11	4	2	MON
239			2S/3W	28G 3	155 98th Avenue	Oakland	California Glass	6/8/1990	1.22E+08	37728370	0	2S/3W 28E	256	0	OAK	3/90	0	20	8	4	MON
240			2S/3W	28G 4	155 98th Avenue	Oakland	California Glass	6/8/1990	1.22E+08	37728370	0	2S/3W 28E	257	0	OAK	3/90	0	20	8	4	MON
241			2S/3W	28G 5	155 98th Avenue	Oakland	California Glass	6/8/1990	1.22E+08	37728370	0	2S/3W 28E	258	0	OAK	3/90	0	20	8	4	MON
242	2S/3W-28G2	88142	2S/3W	28G 2	191 98TH AVE	Oakland	RATTO BROS INC.	12/16/1988	1.22E+08	37728807	0	2S/3W 28E	3531	0	OAK	Jun-88	0	305	30	10	IRR
243			2S/3W	28G 1	190 TUNIS RD & 98TH AV	Oakland	RATTO BROTHER	7/30/1984	1.22E+08	37729456	9	2S/3W 28E	3530	0	OAK	Jul-56	10	250	0	12	IRR+
244			2S/3W	28J 6	10700 Bigge Ave.	San Leandro	Bigge Crane & Rigging MW1	4/8/1993	1.22E+08	37727183	1	2S/3W 28E	8375	0	SLE	2/93	0	24	14	2	MON
245			2S/3W	28J 7	10700 Bigge Ave.	San Leandro	Bigge Crane & Rigging MW2	4/8/1993	1.22E+08	37727183	1	2S/3W 28E	8376	0	SLE	2/93	0	24	10	2	MON
246			2S/3W	28J 1	1750 ADAMS AVE	San Leandro	MILNE TRUCK	4/1/1987	1.22E+08	37725986	9	2S/3W 28E	3532	0	SLE	Dec-86	0	25	9	2	MON
247			2S/3W	28J 2	1750 ADAMS AVE	San Leandro	MILNE TRUCK	4/1/1987	1.22E+08	37725986	9	2S/3W 28E	3533	0	SLE	Dec-86	0	25	9	2	MON
248			2S/3W	28J 3	1750 ADAMS AVE	San Leandro	MILNE TRUCK	4/1/1987	1.22E+08	37725986	9	2S/3W 28E	3534	0	SLE	Dec-86	0	25	9	2	MON
249			2S/3W	28J 4	1750 ADAMS AVE	San Leandro	MILNE TRUCK	4/1/1987	1.22E+08	37725986	9	2S/3W 28E	3535	0	SLE	Dec-86	0	27	11	2	MON
250		93685	2S/3W	28J 8	2000 Adams Ave	San Leandro	Safeway Inc.	12/4/1997	1.22E+08	37725156	1	2S/3W 28E	0	0	SLE	Dec-93	0	20	12	2	MON
251		93685	2S/3W	28J 9	2000 Adams Ave	San Leandro	Safeway Inc.	12/4/1997	1.22E+08	37725156	1	2S/3W 28E	0	0	SLE	Dec-93	0	20	12	2	MON
252		93685	2S/3W	28J 10	2000 Adams Ave	San Leandro	Safeway Inc.	12/4/1997	1.22E+08	37725156	1	2S/3W 28E	0	0	SLE	Dec-93	0	20	12	2	MON
253			2S/3W	28J 5	2000 ADAMS AVE	San Leandro	SAFEMAY STORES	2/3/1988	1.22E+08	37725152	0	2S/3W 28E	3536	0	SLE	Jun-87	0	21	5	2	MON
254		95784	2S/3W	28L 9	Former Lew Galbraith Golf	Oakland	Port of Oakland	2/17/1998	1.22E+08	37725099	1	2S/3W 28E	0	0	OAK	Nov-95	0	24	18	2	MON
255		95784	2S/3W	28L 10	Former Lew Galbraith Golf	Oakland	Port of Oakland	2/17/1998	1.22E+08	37725099	1	2S/3W 28E	0	0	OAK	Nov-95	0	12	12	2	MON
256		95784	2S/3W	28L 11	Former Lew Galbraith Golf	Oakland	Port of Oakland	2/17/1998	1.22E+08	37725099	1	2S/3W 28E	0	0	OAK	Nov-95	0	24	19	2	MON
257		95784	2S/3W	28L 12	Former Lew Galbraith Golf	Oakland	Port of Oakland	2/17/1998	1.22E+08	37725099	1										

	A	B	C	D	E	F	G	H	I	J	K	L	M	N	O	P	Q	R	S	T	U
265		95784	2S/3W	28L20	Former Lew Galbraith Golf	Oakland	Port of Oakland	2/17/1998	1.22E+08	37725099		1 2S/3W 28L	0	0	OAK	Nov-95	0	11	7	2	MON
266		95784	2S/3W	28L21	Former Lew Galbraith Golf	Oakland	Port of Oakland	2/17/1998	1.22E+08	37725099		1 2S/3W 28L	0	0	OAK	Nov-95	0	17	14	2	MON
267		95784	2S/3W	28L22	Former Lew Galbraith Golf	Oakland	Port of Oakland	2/17/1998	1.22E+08	37725099		1 2S/3W 28L	0	0	OAK	Nov-95	0	12	10	2	MON
268		95784	2S/3W	28L23	Former Lew Galbraith Golf	Oakland	Port of Oakland	2/17/1998	1.22E+08	37725099		1 2S/3W 28L	0	0	OAK	Nov-95	0	17	0	2	MON
269		95784	2S/3W	28L24	Former Lew Galbraith Golf	Oakland	Port of Oakland	2/17/1998	1.22E+08	37725099		1 2S/3W 28L	0	0	OAK	Nov-95	0	7	0	2	MON
270		95784	2S/3W	28L25	Former Lew Galbraith Golf	Oakland	Port of Oakland	2/17/1998	1.22E+08	37725099		1 2S/3W 28L	0	0	OAK	Nov-95	0	20	14	2	MON
271		95784	2S/3W	28L26	Former Lew Galbraith Golf	Oakland	Port of Oakland	2/17/1998	1.22E+08	37725099		1 2S/3W 28L	0	0	OAK	Nov-95	0	10	5	2	MON
272		95784	2S/3W	28L27	Former Lew Galbraith Golf	Oakland	Port of Oakland	2/17/1998	1.22E+08	37725099		1 2S/3W 28L	0	0	OAK	Nov-95	0	20	15	2	MON
273		95784	2S/3W	28L28	Former Lew Galbraith Golf	Oakland	Port of Oakland	2/17/1998	1.22E+08	37725099		1 2S/3W 28L	0	0	OAK	Nov-95	0	7	4	2	MON
274		95784	2S/3W	28L29	Former Lew Galbraith Golf	Oakland	Port of Oakland	2/17/1998	1.22E+08	37725099		1 2S/3W 28L	0	0	OAK	Nov-95	0	23	19	2	MON
275		95784	2S/3W	28L30	Former Lew Galbraith Golf	Oakland	Port of Oakland	2/17/1998	1.22E+08	37725099		1 2S/3W 28L	0	0	OAK	Nov-95	0	11	8	2	MON
276			2S/3W	28L	Doolittle & Airport Acces	Oakland	Domenic Cannizzaro B-1	9/30/1992	1.22E+08	37726386		1 2S/3W 28L	8212	0	OAK	9/91	0	14	8	0	BOR
277			2S/3W	28Q 1	390 DOOLITTLE DRIVE	San Leandro	EDGEWATER INTN'L TRUC	7/22/1986	1.22E+08	37722521		9 2S/3W 28Q	3537	0	SLE	5/86	0	26	7	2	TES
278			2S/3W	28Q 2	390 DOOLITTLE DRIVE	San Leandro	EDGEWATER INTN'L TRUC	7/22/1986	1.22E+08	37722521		9 2S/3W 28Q	3538	0	SLE	5/86	0	25	7	2	TES
279			2S/3W	28Q11	10505 Doolittle Drive	Oakland	Port of Oakland	9/3/1991	1.22E+08	37722521		9 2S/3W 28Q	1982	0	OAK	4/91	8	20	5	2	MON
280			2S/3W	28Q	2000 Adams Avenue	San Leandro	Safeway	7/16/1990	1.22E+08	37725152		0 2S/3W 28Q	601	0	SLE	Dec-89	0	0	8	0	BOR*
281			2S/3W	28Q	2000 Adams Avenue	San Leandro	Safeway	7/16/1990	1.22E+08	37725152		0 2S/3W 28Q	602	0	SLE	Oct-89	0	8	0	0	BOR*
282			2S/3W	28Q 5	2000 Adams Avenue	San Leandro	Safeway	7/16/1990	1.22E+08	37725152		0 2S/3W 28Q	603	0	SLE	Oct-89	9	21	6	4	MON
283			2S/3W	28Q 6	2000 Adams Avenue	San Leandro	Safeway	7/16/1990	1.22E+08	37725152		0 2S/3W 28Q	604	0	SLE	Oct-89	9	21	6	4	MON
284			2S/3W	28Q 7	2000 Adams Avenue	San Leandro	Safeway	7/16/1990	1.22E+08	37725152		0 2S/3W 28Q	605	0	SLE	Oct-89	8	21	5	4	MON
285			2S/3W	28Q 9	2000 Adams Street	San Leandro	Safeway	6/12/1991	1.22E+08	37722521		9 2S/3W 28Q	1666	0	SLE	1/91	0	63	9	4	MON
286			2S/3W	28Q10	2000 Adams Street	San Leandro	Safeway	6/12/1991	1.22E+08	37722521		9 2S/3W 28Q	1667	0	SLE	1/91	0	67	10	4	MON
287			2S/3W	28Q 8	2000 Adams Ave	San Leandro	Safeway Milk Plant	3/27/1991	1.22E+08	37725152		0 2S/3W 28Q	1509	0	SLE	9/90	0	25	15	2	MON
288			2S/3W	28Q 3	2000 ADAMS AVE	San Leandro	SAFEWAY MILK PLANT	10/6/1986	1.22E+08	37725152		0 2S/3W 28Q	3539	0	SLE	Jun-86	0	27	9	2	TES
289			2S/3W	28Q 4	2000 ADAMS AVE	San Leandro	SAFEWAY MILK PLANT	10/6/1986	1.22E+08	37725152		0 2S/3W 28Q	3540	0	SLE	Jul-86	0	20	9	2	TES
290		97099	2S/3W	28R23	480 Hester St	San Leandro	Kaiser Aerotech	7/30/1998	1.22E+08	37721217		1 2S/3W 28R	0	0	SLE	3/97	0	10	8	2	MON
291			2S/3W	28R16	717 Whitney St.	San Leandro	Bedford Prop. MW-5	7/29/1993	1.22E+08	37722805		1 2S/3W 28R	0	0	SLE	9/92	0	14	12	2	MON
292			2S/3W	28R17	717 Whitney St.	San Leandro	Bedford Prop. MW-6	7/29/1993	1.22E+08	37722805		1 2S/3W 28R	0	0	SLE	9/92	0	13	10	2	MON
293			2S/3W	28R 9	Whitney & Edison	San Leandro	Bedford Props MW-1	9/26/1992	1.22E+08	37722476		1 2S/3W 28R	8117	0	SLE	Oct-91	11	17	7	2	MON
294			2S/3W	28R10	Whitney & Edison	San Leandro	Bedford Props MW-2	9/26/1992	1.22E+08	37722476		1 2S/3W 28R	8118	0	SLE	Oct-91	12	16	8	2	MON
295			2S/3W	28R11	Whitney & Edison	San Leandro	Bedford Props MW-3	9/26/1992	1.22E+08	37722476		1 2S/3W 28R	8119	0	SLE	Oct-91	13	17	7	2	MON
296			2S/3W	28R12	Whitney & Edison	San Leandro	Bedford Props MW-4	9/26/1992	1.22E+08	37722476		1 2S/3W 28R	8120	0	SLE	Oct-91	0	17	7	2	MON
297			2S/3W	28R 5	519 Whitney St	San Leandro	Benkiser Electric	7/31/1991	1.22E+08	37723350		0 2S/3W 28R	1798	0	SLE	5/91	11	17	8	2	MON
298			2S/3W	28R 6	519 Whitney St	San Leandro	Benkiser Electric	7/31/1991	1.22E+08	37723350		0 2S/3W 28R	1799	0	SLE	4/91	11	0	9	0	BOR*
299			2S/3W	28R 7	519 Whitney St	San Leandro	Benkiser Electric	7/31/1991	1.22E+08	37723350		0 2S/3W 28R	1800	0	SLE	3/91	0	15	5	2	MON
300			2S/3W	28R 8	519 Whitney St	San Leandro	Benkiser Electric	7/31/1991	1.22E+08	37723350		0 2S/3W 28R	1801	0	SLE	3/91	0	15	6	2	MON
301			2S/3W	28R15	485 Hester St.	San Leandro	C, K, M, B & L MW-1	7/12/1993	1.22E+08	37720992		1 2S/3W 28R	0	0	SLE	1/93	0	15	5	4	MON
302			2S/3W	28R13	485 Hester St.	San Leandro	C, K, M, B & L MW-2	7/12/1993	1.22E+08	37721000		1 2S/3W 28R	0	0	SLE	5/93	0	16	6	4	MON
303			2S/3W	28R14	485 Hester St.	San Leandro	C, K, M, B & L MW-3	7/12/1993	1.22E+08	37721000		1 2S/3W 28R	0	0	SLE	5/93	0	16	5	4	MON
304			2S/3W	28R18	717 Whitney St	San Leandro	Eaton Corp	8/21/1997	1.22E+08	37722790		1 2S/3W 28R	0	0	SLE	6/93	0	10	7	2	MON
305			2S/3W	28R19	717 Whitney St	San Leandro	Eaton Corp	8/21/1997	1.22E+08	37722790		1 2S/3W 28R	0	0	SLE	6/93	0	10	7	2	MON
306			2S/3W	28R20	717 Whitney St	San Leandro	Eaton Corp	8/21/1997	1.22E+08	37722790		1 2S/3W 28R	0	0	SLE	6/93	0	10	9	2	MON
307			2S/3W	28R 1	528 WHITNEY ST	San Leandro	MOORE BUSINESS FORMS	8/16/1985	1.22E+08	37723498		0 2S/3W 28R	3541	0	SLE	Jul-85	0	14	0	2	MON
308			2S/3W	28R 2	528 WHITNEY ST	San Leandro	MOORE BUSINESS FORMS	8/16/1985	1.22E+08	37723498		0 2S/3W 28R	3542	0	SLE	Jul-85	0	14	0	2	MON
309			2S/3W	28R 3	528 WHITNEY ST	San Leandro	MOORE BUSINESS FORMS	8/16/1985	1.22E+08	37723498		0 2S/3W 28R	3543	0	SLE	Jul-85	0	14	0	2	MON
310			2S/3W	28R 4	Hester St. & Adams Ave.	San Leandro	Precision Founders, Inc.	3/27/1991	1.22E+08	37722500		0 2S/3W 28R	1513	0	SLE	Oct-90	0	61	28	4	MON
311			2S/3W	28R21	528 Whitney St	San Leandro	The Principal Financial G	9/11/1997	1.22E+08	37723498		1 2S/3W 28R	0	0	SLE	2/94	0	23	5	2	MON
312			2S/3W	28R22	528 Whitney St	San Leandro	The Principal Financial G	9/11/1997	1.22E+08	37723498		1 2S/3W 28R	0	0	SLE	2/94	0	20	6	2	MON
313			2S/3W		Edis Avenue	Oakland	Stonehurst Nursery								OAK			91		??	
314			2S/3W		Edis Avenue	Oakland	Stonehurst Nursery								OAK			70		??	
315			2S/3W	21		Oakland	General Metals Corp								OAK			600		??	
316																					
317																					
318																					
318																					
319																					
320																					
321																					

Notes:

319 Yellow fill = County

320 Green fill = State

321 Some were found on both and have both color fills